

DOCUMENT 009113 – ADDENDUM 02

1.1 PROJECT INFORMATION

- A. Project Name: Echo Electric Supply– New Lincoln Facility.
- B. Owner: QRS Investments LLC.
- C. Architect: Clark Architects Collaborative 3.
- D. Architect Project Number: 17003.
- E. Date of Addendum: 09/21/17.

1.2 NOTICE TO BIDDERS

- A. This Addendum is issued to all registered plan holders pursuant to the Instructions to Bidders and Conditions of the Contract. This Addendum serves to clarify, revise, and supersede information in the Project Manual, Drawings, and previously issued Addenda. Portions of the Addendum affecting the Contract Documents will be incorporated into the Contract by enumeration of the Addendum in the Owner/Contractor Agreement.
- B. The Bidder shall acknowledge receipt of this Addendum in the appropriate space on the Bid Form.
- C. The date for receipt of bids is unchanged by this Addendum, at same time and location.
 - 1. Bid Date: 9/28/17.
 - 2. Time: 2:00 p.m. Local time.
 - 3. Location: 3330 Woods Ave, Lincoln NE 68510
- D. Schedule: The successful bidder will receive a Notice to Proceed as soon as a contract with the Owner has been fully executed and the necessary bonds and insurance are in place. It is anticipated that the construction will be completed within 12 months.

1.3 ATTACHMENTS

- A. This Addendum includes the following attached Documents and Specification Sections:
 - 1. Addendum 2 and associated attachments issued by ETI, Inc, dated 09/21/2017 (new).
 - 2. Section 033543 – POLISHED CONCRETE FINISHES, dated 09/21/17, (reissued).
 - 3. Section 096723 – RESINOUS FLOORING, dated 09/21/17, (new).
 - 4. Section 123623.13 – PLASTIC LAMINATE CLAD COUNTERTOPS, dated 09/21/17, (new).
 - 5. Section 123700 – STAINLESS STEEL COUNTERTOPS, dated 09/21/17, (new).
 - 6. Section 312300 – EXCAVATION AND EMBANKMENTS (reissued).

- B. This Addendum includes the attached Addendum Drawings:
1. C103.5 Gate Blow-up Plan by Benesch, dated 09/12/17 (new).
 2. C130 Details by Benesch, dated 09/12/2017, replacing Sheet C130.
 3. Architectural Addendum Drawing AAD-01, dated 09/21/17, revising Sheet A110.
 4. Architectural Addendum Drawing AAD-02, dated 09/21/17, revising Sheet A202.
 5. Architectural Addendum Drawing AAD-03, dated 09/21/17, revising Sheet A401.
 6. Architectural Addendum Drawing AAD-04, dated 09/21/17, revising Sheet A500.
 7. Architectural Addendum Drawing AAD-05, dated 09/21/17, revising Sheet A110.
 8. Architectural Addendum Drawing AAD-06, dated 09/21/17, revising Sheet A300.
 9. Architectural Addendum Drawing AAD-07, dated 09/21/17, revising Sheet A400.
 10. Drawing AD-1, Steel Joist Edge Connection, dated 09/21/17, issued by Vector Structural Design to clarify seismic forces and gauge of metal deck, revising detail C of Sheet S302.

1.4 REVISIONS TO DIVISIONS 02 - 49 SPECIFICATION SECTIONS

- A. Specification Table of Contents
1. Delete 083323 OVERHEAD COILING DOORS from DIVISION 08-OPENINGS, this section is not included in project.
- B. Specification Section 033543 – Polished Concrete Finishes. (reissued)
1. Replace Section 033543 with the section included with this addendum.
- C. Specification Section 084113 – Aluminum Framed Entrances and Storefronts. (not reissued)
1. Paragraph 2.1.H Windborne-Debris Impact Resistance: Delete this paragraph.
- D. Specification Section 102239 – Operable Acoustical Panels. (not reissued)
1. Paragraph 2.2.A.1.d: Add; Moderco Signature 8600 as an acceptable product.
- E. Specification Section 133419 – Metal Building Systems. (not reissued)
1. Paragraph 2.1.A, Manufacturers: Add; American Buildings Company.
 2. Paragraph 2.1.A, Manufacturers: Add; Kirby Building Systems.
- F. Specification Section 312300 – Excavation and Embankment. (reissued)
1. Replace Section 312300 with the section included with this addendum.

1.5 REVISIONS TO DRAWING SHEETS

- A. Sheet C103.5 – Gate Blow-up Plan (issued).
1. See attached sheet C103.5 included in this addendum clarifying the fences and gates on site.

- B. Sheet C130 – Details (reissued)
 - 1. See attached sheet C130 included in this addendum with details on gates & operators.
- C. Sheet A100 – First Floor Plan (not reissued).
 - 1. Drawing A1: Delete keynote 111316.A FOAM PAD DOCK SEALS from the SOUTH side of the Covered Dock. There are only to be (2) 111319.A EDGE OF DOCK LEVELERS at this location. Dock Seals and Edge of Dock Levelers to remain on the NORTH side of Shipping/Receiving 128.
- D. Sheets A103/A104 – Exterior Storage Building (not reissued).
 - 1. For clarification, there is no insulation in the roof or walls of the exterior storage building.
- E. Sheet A110 – Room Finish Schedule, Wall Types, Door Schedule, Door and Frame Types (not reissued).
 - 1. Drawing A9: The drawing AAD-01 included with this addendum clarifies where safety glass is required. See AAD-01.
 - 2. Room Finish Schedule: The drawing AAD-05 included with this addendum clarifies ceramic wall tile location in Men 116, Women 118, and RR 113. See AAD-05.
- F. Sheet A202 – Building Sections (not reissued).
 - 1. Drawing A5: The drawing AAD-02 included with this addendum clarifies the required clearance between the floor and the bottom of the structural haunch. See AAD-02.
- G. Sheet A300 – Wall Sections (not reissued).
 - 1. Drawing A9: The drawing AAD-06 included with this addendum revises the architectural precast concrete cladding to run to top of structural footing, 99'-0". This occurs at all precast concrete cladding conditions.
- H. Sheet A303 – Stair Sections and Details (not reissued).
 - 1. Drawing J11: The shaft wall on the west side of Stair A shall be braced at second floor and at the top of the lid.
- I. Sheet A400 – Enlarged Details (not reissued).
 - 1. Drawing A12: The drawing AAD-07 included with this addendum revises the insulation between the insulated architectural precast concrete wall panels to be 072100.F SPRAY POLYURETHANE INSULATION.
- J. Sheet A401 – Enlarged Details (not reissued).
 - 1. Drawing A12: The drawing AAD-03 included with this addendum indicates what is required for window sills. See AAD-03.

- K. Sheet A500 – Enlarged Floor Plans and Interior Elevations (not reissued).
 - 1. Drawing N7: The drawing AAD-04 included with this addendum clarifies the tile to floor condition and adds grab bars. See AAD-04.
- L. Sheet A501 – Enlarged Floor Plans & Interior Elevations (not reissued).
 - 1. Drawing G7: The stainless steel countertop is to have a sub-top of two layers of $\frac{3}{4}$ " plywood with a $\frac{1}{2}$ " layer of plywood between the sub-top and the concrete block support wall to result in a 3'-6" countertop height.

END OF DOCUMENT 009113



DATE ISSUED September 21, 2017

ADDENDUM # 2

ENGINEER Engineering Technologies, Inc.
825 M Street, Suite 200
Lincoln, NE 68508

PROJECT ECHO ELECTRICAL

ETI PROJECT # 2017-047

The Architect issues this Addendum to all known bidders before receipt of proposals. Bidder shall acknowledge the receipt of this addendum on their proposal sheet and all information contained herein shall become a part of the contract documents.

ADDENDUM:

Questions – MECHANICAL

- 1. Is fire sprinkler coverage required for the exterior storage building?
A. No, per discussions with Bob Feidler during design the distance is acceptable from the street hydrants.
2. Can the backflow preventer have butterfly valves that can be wired for supervisory monitoring, or do they have to have the handles locked as noted on the fire service detail?
A. Butterfly valves are acceptable, but any additional electrical/wiring connections shall be coordinated with the fire alarm contractor and included with the bid.
3. How tall are the storage racks in the warehouse and mezzanine areas?
A. The mezzanine will have 10' racks with the product sitting a bit above that. The warehouse will have 24' verticals with the top shelf planned at 20'.

PRIOR APPROVAL – MECHANICAL

- 1. The following manufacturers have received prior approval for bidding purposes subject to shop drawing review:
A. List Equipment Here List Manufacturer Here
Emergency Eye Wash Guardian Safety Equipment
Exhaust Fans PennBarry
Mixing valves Powers
Plumbing Fixtures – Drainage products Watts
Roof Hoods PennBarry

GENERAL ITEMS – ELECTRICAL

- 1. For clarification, electrical contractor shall provide rough-in and make final connections to exterior motorized gates. All exterior motorized gate equipment will be supplied by others.

PRIOR APPROVAL – ELECTRICAL

- 1. The following manufacturers have received prior approval for bidding purposes subject to shop drawing review:
A. List Equipment Here List Manufacturer Here
Access Controls Avigilon

DRAWINGS – ELECTRICAL

- 1. Sheet ME100 SITE PLAN – MECHANICAL AND ELECTRICAL
A. Disconnects added to Exterior Motorized Gates and Exterior Motorized Gates were changed to 3-phase. See ME100 Attachments #1 and #2 for more information.
2. Sheet E400 SCHEDULES
A. Equipment Connection Schedule – For Exterior Motorized Gates (EG), provide 3 - #10 AWG, #10 ground in 3/4" conduit, and a 30A, Fused, NEMA 3R Disconnect.

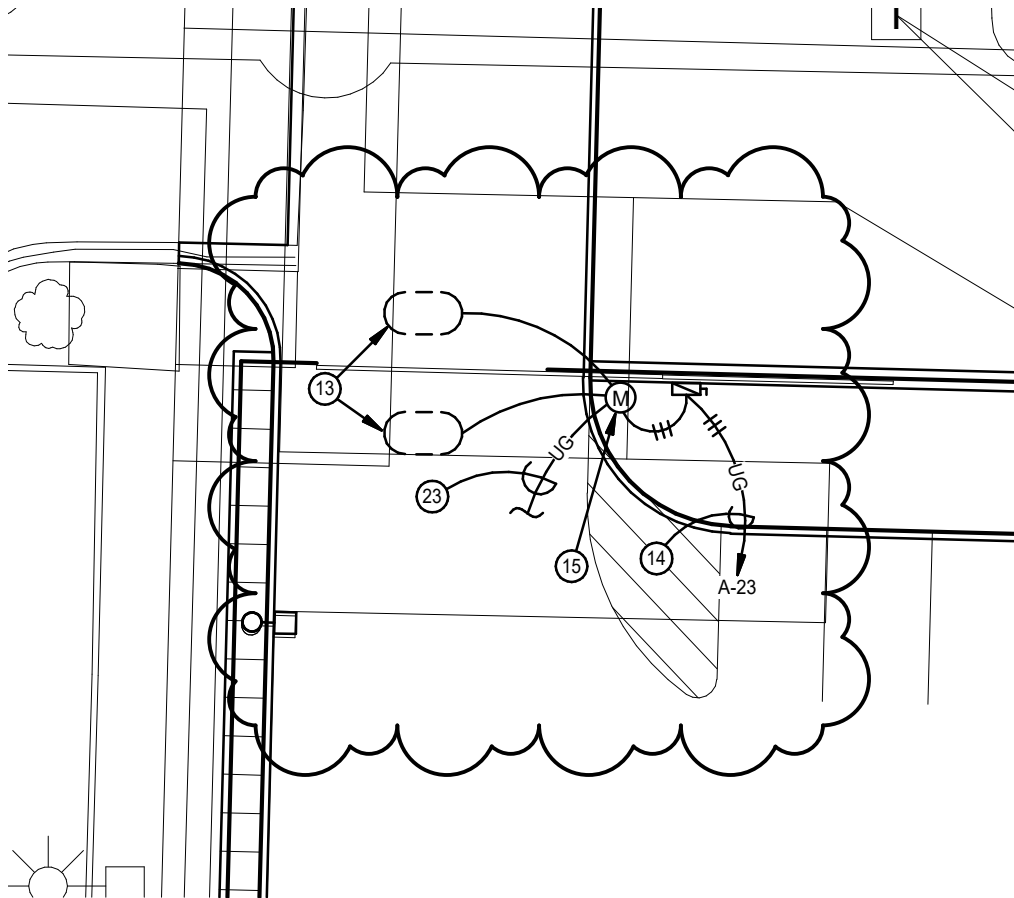
3. Sheet E500 PANEL SCHEDULES

A. Provided updated panel schedules for Panel "A" and Panel "D". See Sheet E500 Attachment 1.

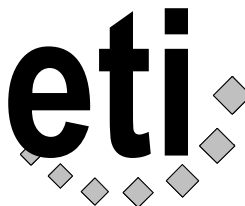
END OF ADDENDUM

SHEET NOTES

- 13 FREE EXIT AND SAFETY LOOPS, REFERENCE DETAIL 7, SHEET E300. COORDINATE EXACT LOCATION WITH GATE INSTALLER.
- 14 CONNECT TO NEW 20A/3P CIRCUIT BREAKER. PROVIDE CIRCUIT BREAKER.
- 15 REFERENCE DETAIL 7, SHEET E300 FOR CONNECTION TO MOTORIZED GATE. COORDINATE EXACT LOCATION WITH GATE INSTALLER.
- 23 PROVIDE 3/4" CONDUIT WITH PULL-STRING TO GATE CONTROLLER IN SHIPPING AND RECEIVING 128 FOR FUTURE USE. COORDINATE EXACT LOCATION WITH OWNER.



ECHO Electrical Supply
SITE PLAN - MECHANICAL
AND ELECTRICAL



Engineering Technologies Inc.
Mechanical & Electrical Building Solutions

825 M Street, Suite 200 | Lincoln, NE 68508
 P 402.476.1273 | F 402.476.1274
 1111 N. 13th St, Suite 216 | Omaha, NE 68102
 P 402.330.2772 | F 402.330.2630
 ETI Project No: 2017-047

ETI ADDENDUM #2

SHEET
ME100
 ATTACHMENT NO.

1

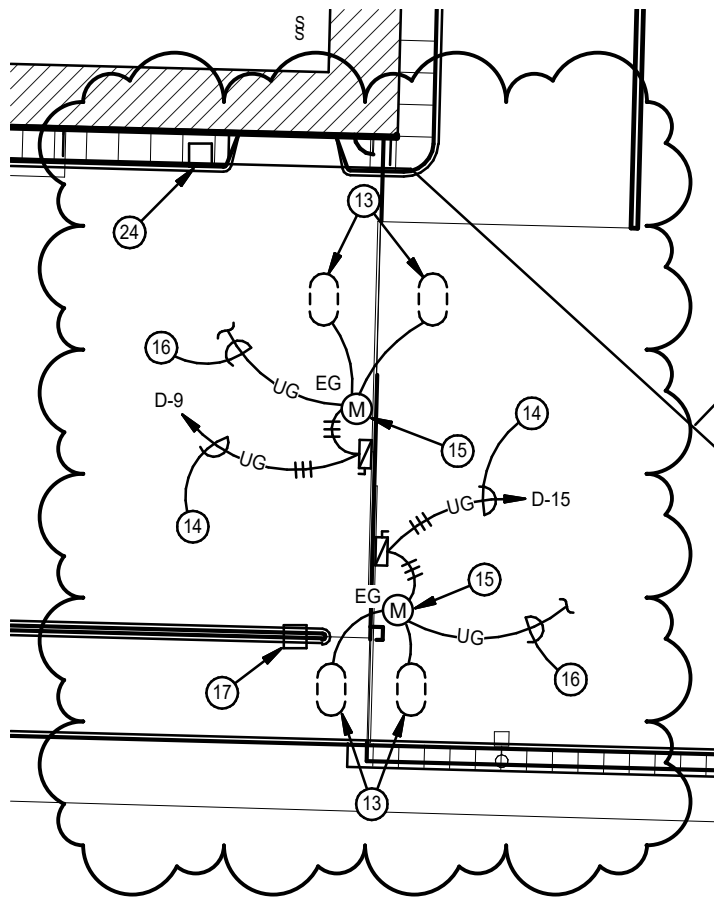
09-21-17

SCALE: 1" = 20'-0"

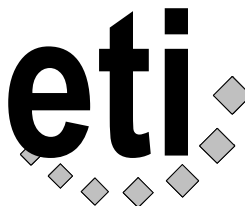
TMR

SHEET NOTES

- 13 FREE EXIT AND SAFETY LOOPS, REFERENCE DETAIL 7, SHEET E300. COORDINATE EXACT LOCATION WITH GATE INSTALLER.
- 14 CONNECT TO NEW 20A/3P CIRCUIT BREAKER. PROVIDE CIRCUIT BREAKER.
- 15 REFERENCE DETAIL 7, SHEET E300 FOR CONNECTION TO MOTORIZED GATE. COORDINATE EXACT LOCATION WITH GATE INSTALLER.
- 16 TO GATE CONTROLLER IN SHIPPING AND RECEIVING 128. REFERENCE SHEET E200.
- 17 VIDEO INTERCOM SYSTEM, AIPHONE JF-DVF WITH SBX-DVF WEATHERPROOF AUDIO ONLY BOX. MOUNT TO STEEL SUPPORT FRAME. CONNECT BACK TO MASTER STATION IN SHIPPING AND RECEIVING 128. COORDINATE EXACT LOCATION WITH OWNER AND GATE INSTALLER.
- 24 PROVIDE CARD READER FOR EXTERIOR GATE. MOUNT TO STEEL SUPPORT FRAME. CONNECT TO GATE CONTROLS PER MANUFACTURERS INSTRUCTIONS. COORDINATE EXACT LOCATION WITH OWNER.



ECHO Electrical Supply
SITE PLAN - MECHANICAL
AND ELECTRICAL



Engineering Technologies Inc.
Mechanical & Electrical Building Solutions

825 M Street, Suite 200 | Lincoln, NE 68508
 P 402.476.1273 | F 402.476.1274
 1111 N. 13th St, Suite 216 | Omaha, NE 68102
 P 402.330.2772 | F 402.330.2630
 ETI Project No: 2017-047

ETI ADDENDUM #2

SHEET
ME100
 ATTACHMENT NO.

2

09-21-17

SCALE: 1" = 30'-0"


TMR

PANEL SCHEDULE												
PANEL A		VOLTAGE		PHASE		22 KAIC RMS			225 A		MAIN LUGS	
		120 / 208V		3Ø 4 WIRE, SOLID NEUTRAL							SURFACE MOUNTED	
LOAD DESCRIPTION	LOAD		BREAKER		NO.	PHASE	NO.	BREAKER		LOAD		LOAD DESCRIPTION
	VA	TYPE	POLES	AMPS				AMPS	POLES	TYPE	VA	
NORTH EXIT DOORS	1,000	X	1	20	1	A	2	20	1	R	800	120 EAST PROJ.
OFFICE DOOR	500	X	1	20	3	B	4	20	1	R	800	120 WEST PROJ.
GEN RECEPTACLE	180	R	1	20	5	C	6	20	1	R	540	120 RECEPTACLES
GEN CHARGER	500	R	1	20	7	A	8	20	1	R	360	120 RECEPTACLES
EBH	1,500	X	1	20	9	B	10	20	1	R	360	120 RECEPTACLES
SPARE	1,000	S	1	20	11	C	12	20	1	R	360	120 RECEPTACLES
101,104 RECEPTS	900	R	1	20	13	A	14	20	1	R	1,080	120 RECEPTACLES
104 RECEPTACLES	900	R	1	20	15	B	16	20	1	R	1,080	120 FLOOR BOXES
EWB-1	1,500	X	1	20	17	C	18	20	1	R	1,080	120 FLOOR BOXES
EWB-2	2,000	X	2	30	19	A	20	20	1	R	1,080	120 FLOOR BOXES
EG	600	X	3	20	23	C	24	20	1	S	1,000	SPARE
-	600	X	-	-	25	-	26	20	1	S	1,000	SPARE
-	600	X	-	-	27	-	28	20	1	S	1,000	SPARE
SPARE	1,000	S	1	20	29	C	30	20	1	-	-	SPACE ONLY
SPARE	1,000	S	1	20	31	A	32	20	1	-	-	SPACE ONLY
SPARE	1,000	S	1	20	33	B	34	20	1	-	-	SPACE ONLY
SPACE ONLY	-	-	1	20	35	C	36	20	1	-	-	SPACE ONLY
SPACE ONLY	-	-	1	20	37	A	38	20	1	-	-	SPACE ONLY
SPACE ONLY	-	-	1	20	39	B	40	20	1	-	-	SPACE ONLY
SPACE ONLY	-	-	1	20	41	C	42	20	1	-	-	SPACE ONLY

LOAD INFORMATION			NOTES: 1.
	KVA	AMPS	
TOTAL CONNECTED LOAD	28	78	
EST. MAX DEMAND	23	65	

PANEL SCHEDULE												
PANEL D		VOLTAGE		PHASE		10 KAIC RMS			225 A		MAIN LUGS	
		120 / 208V		3Ø 4 WIRE, SOLID NEUTRAL							SURFACE MOUNTED	
LOAD DESCRIPTION	LOAD		BREAKER		NO.	PHASE	NO.	BREAKER		LOAD		LOAD DESCRIPTION
	VA	TYPE	POLES	AMPS				AMPS	POLES	TYPE	VA	
WILL CALL DOOR	500	X	1	20	1	A	2	20	1	M	600	RADIANT HEAT
EXT RECEPTS	540	R	1	20	3	B	4	20	1	M	1,200	RADIANT HEAT
GDO	1,200	X	1	20	5	C	6	20	1	R	1,260	127 RECEPTACLES
GDO	1,200	X	1	20	7	A	8	20	1	R	1,000	ICE MAKER (NOTE 1)
EG	600	X	3	20	9	B	10	20	1	R	800	127 EWC-1 (NOTE 1)
-	600	X	-	-	11	C	12	20	1	S	1,000	SPARE
-	600	X	-	-	13	A	14	20	1	S	1,000	SPARE
EG	600	X	3	20	15	B	16	20	1	S	1,000	SPARE
-	600	X	-	-	17	A	18	20	1	S	1,000	SPARE
-	600	X	-	-	19	C	20	20	1	-	-	SPACE ONLY
SPARE	1,000	S	1	20	21	B	22	20	1	-	-	SPACE ONLY
SPARE	1,000	S	1	20	23	C	24	20	1	-	-	SPACE ONLY
SPARE	1,000	S	1	20	25	A	26	20	1	-	-	SPACE ONLY
SPACE ONLY	-	-	1	20	27	B	28	20	1	-	-	SPACE ONLY
SPACE ONLY	-	-	1	20	29	C	30	20	1	-	-	SPACE ONLY
SPACE ONLY	-	-	1	20	31	A	32	20	1	-	-	SPACE ONLY
SPACE ONLY	-	-	1	20	33	B	34	20	1	-	-	SPACE ONLY
SPACE ONLY	-	-	1	20	35	C	36	20	1	-	-	SPACE ONLY
SPACE ONLY	-	-	1	20	37	A	38	20	1	-	-	SPACE ONLY
SPACE ONLY	-	-	1	20	39	B	40	20	1	-	-	SPACE ONLY
SPACE ONLY	-	-	1	20	41	C	42	20	1	-	-	SPACE ONLY

LOAD INFORMATION			NOTES: 1. PROVIDE GFCI TYPE BREAKER.
	KVA	AMPS	
TOTAL CONNECTED LOAD	19	52	
EST. MAX DEMAND	15	42	

ECHO Electrical Supply PANEL SCHEDULES		Engineering Technologies Inc. Mechanical & Electrical Building Solutions 825 M Street, Suite 200 Lincoln, NE 68508 P 402.476.1273 F 402.476.1274 1111 N. 13th Street, Suite 216 Omaha, NE 68102 P 402.330.2772 F 402.330.2630 ETI Project No: 2017-047	ETI ADDENDUM #2
			SHEET E500
NO SCALE	TMR		ATTACHMENT NO. 1
			09-21-17

SECTION 033543 - POLISHED CONCRETE FINISHING

PART 1 - GENERAL

1.1 RELATED DOCUMENTS

- A. Drawings and general provisions of the Contract, including General and Supplementary Conditions and Division 01 Specification Sections, apply to this Section.

1.2 SUMMARY

- A. Section includes polished concrete finishing.
 - 1. Concrete for polished concrete, including formwork, reinforcement, concrete materials, mixture design, placement procedures, initial finishing, and curing is specified in Section 033000 "Cast-in-Place Concrete."
- B. Related Requirements:
 - 1. Section 033000 "Cast-in-Place Concrete" for concrete not designated as polished concrete.

1.3 PREINSTALLATION MEETINGS

- A. Preinstallation Conference: Conduct conference at Project site.
 - 1. Before submitting design mixtures, review concrete design mixture and examine procedures for ensuring quality of concrete materials. Require representatives of each entity directly concerned with polished concrete to attend, including the following:
 - a. Contractor's superintendent.
 - b. Independent testing agency responsible for concrete design mixtures.
 - c. Ready-mix concrete manufacturer.
 - d. Cast-in-place concrete subcontractor.
 - e. Polished concrete finishing Subcontractor.
 - 2. Review cold- and hot-weather concreting procedures, curing procedures, construction joints, concrete repair procedures, concrete finishing, and protection of polished concrete.

1.4 ACTION SUBMITTALS

- A. Product Data: For each type of product.
- B. Polishing Schedule: Submit plan showing polished concrete surfaces and schedule of polishing operations for each area of polished concrete before start of polishing operations. Include locations of all joints, including construction joints.

1.5 INFORMATIONAL SUBMITTALS

- A. Qualification Data: For Installer.
- B. Material Certificates: For each of the following, signed by manufacturers:
 - 1. Repair materials.
 - 2. Stain materials.
 - 3. Liquid floor treatments.

1.6 QUALITY ASSURANCE

- A. Mockups: Before casting concrete, build mockups to verify selections made under Sample submittals and to demonstrate typical joints, surface finish, tolerances, and standard of workmanship. Build mockups to comply with the following requirements, using materials indicated for the completed Work:
 - 1. Build mockups in the location and of the size indicated or, if not indicated, as directed by Architect.
 - 2. Demonstrate curing, finishing, and protecting of polished concrete.
 - 3. Subject to compliance with requirements, approved mockups may become part of the completed Work if undisturbed at time of Substantial Completion.

1.7 FIELD CONDITIONS

- A. Traffic Control: Maintain access for vehicular and pedestrian traffic as required for other construction activities.

PART 2 - PRODUCTS

2.1 LIQUID FLOOR TREATMENTS

- A. Penetrating Densifier for Polished Concrete Finish: Clear, waterborne solution of inorganic silicate or silicate materials and proprietary components; odorless; that penetrates, hardens, and is suitable for polished concrete surfaces.
 - 1. Basis-of-Design Product: Subject to compliance with requirements, provide PROSOCO inc., Consolideck LS or comparable product by one of the following:
 - a. Euclid Chemicals.
 - b. L&M Construction Chemicals

2.2 PROTECTIVE TREATMENTS

- A. Penetrating Protective Treatments: Modified silane blend, penetrating clear, reactive sealer with a VOC content of 400 g/L or less shall repel and prevent stains from water and oil substances and is suitable for natural polished concrete surfaces.

1. Basis-of-Design Product: Subject to compliance with requirements, provide PROSOCO, Inc.; Consolideck SLX 100 Water & Oil Repellent or comparable product by one of the following:
 - a. Euclid Chemical.
 - b. L&M Construction Chemicals

PART 3 - EXECUTION

3.1 POLISHING

- A. General: Perform polishing before partition studs are erected.
- B. Examination:
 1. Verify that concrete substrate conditions, which have been previously installed under other sections are acceptable for product installation in accordance with manufacturer's instructions prior to installation of concrete finishing materials.
 2. Do not begin installation until substrates have been properly prepared.
 3. Verify floor flatness meets F(F) 35; and of levelness, F(L) 25; with minimum local values of flatness, F(F) 24; and of levelness, F(L) 17; for slabs-on-grade.
 - a. A general test of the value specified above is that no gap at any point between concrete surface and an unlevelled, freestanding, 10-ft.- (3.05-m-) long straightedge resting on two high spots and placed anywhere on the surface does not exceed 3/16 inch (4.8 mm).
- C. Preparation:
 1. Ensure surfaces are clean and free of dirt and other foreign matter harmful to performance of concrete finishing materials.
 2. Examine surface to determine soundness of concrete for polishing.
- D. Initial Grinding:
 1. Diamond polish concrete floor surfaces with power disc machine recommended by floor finish manufacturer. Sequence from coarse to fine grit. Installer to determine the optimum starting grit in order to achieve the specified aggregate exposure.
- E. Final Polished Concrete Floor finish: Fine aggregate (Salt and Pepper) finish.
 1. Remove not more than 1/16 inch of concrete surface by grinding and polishing resulting in majority of exposure displaying fine aggregate with no, or small amount of medium aggregate at random locations.
- F. Gloss: Level 3 – High Gloss Appearance:
 1. Not less than 6 steps with full refinement of each diamond pad up to 1500 grit resin bonded pad with one application of densifier.

- G. Apply polished concrete finish system to cured and prepared slabs to match accepted mockup.
 - 1. Machine grind floor surfaces to receive polished finishes level and smooth.
 - 2. Apply penetrating liquid floor treatment for polished concrete in polishing sequence and according to manufacturer's written instructions, allowing recommended drying time between successive coats.
 - 3. Continue polishing with progressively finer-grit diamond polishing pads to gloss level, to match approved mockup.
 - 4. Control and dispose of waste products produced by grinding and polishing operations.
 - 5. Neutralize and clean polished floor surfaces.

- H. Protection: After completing protect installed product from damage during construction in accordance with manufacturer's recommendations.

END OF SECTION 033543

SECTION 096723 – RESINOUS FLOORING

PART 1 - GENERAL

1.1 RELATED DOCUMENTS

- A. Drawings and general provisions of the Contract, including General and Supplementary Conditions and Division 01 Specification Sections, apply to this Section.

1.2 SUMMARY

- A. Section includes the following:
 - 1. Resinous flooring.

1.3 ACTION SUBMITTALS

- A. Product Data: For each type of product. Include preparation requirements and application instructions.
- B. Samples for Initial Selection: For each type of topcoat product indicated.

1.4 QUALITY ASSURANCE

- A. The Manufacturer shall have a minimum of 10 years of experience in the production, sales, and technical support of epoxy and urethane industrial flooring and related materials.
- B. The Applicator shall have experience in installation of the flooring system as confirmed by the manufacturer in all phases of surface preparation and application of the product specified.
- C. No requests for substitutions shall be considered that would change the generic type of the specified System.
- D. System shall be in compliance with requirements of United States Department of Agriculture (USDA), Food, Drug Administration (FDA), and local Health Department.
- E. System shall be in compliance with the Indoor Air Quality requirements of California section 01350 as verified by a qualified independent testing laboratory.
- F. A pre-installation conference shall be held between Applicator, General Contractor and the Owner to review and clarification of this specification, application procedure, quality control, inspection and acceptance criteria and production schedule.

1.5 DELIVERY, STORAGE, AND HANDLING

A. Packing and Shipping

1. All components of the system shall be delivered to the site in the Manufacturer's packaging, clearly identified with the product type and batch number.

B. Storage and Protection

1. The Applicator shall be provided with a dry storage area for all components. The area shall be between 60 F and 85 F, dry, out of direct sunlight and in accordance with the Manufacturer's recommendations and relevant health and safety regulations.

C. Waste Disposal

1. The Applicator shall be provided with adequate disposal facilities for non-hazardous waste generated during installation of the system.

D. Store materials not in use in tightly covered containers in well-ventilated areas with ambient temperatures continuously maintained at not less than 45 deg F (7 deg C).

1. Maintain containers in clean condition, free of foreign materials and residue.
2. Remove rags and waste from storage areas daily.

1.6 FIELD CONDITIONS

A. Application may proceed while air, material and substrate temperatures are between 60 F and 85 F providing the substrate temperature is above the dew point. Outside of this range, the Manufacturer shall be consulted.

B. The relative humidity in the specific location of the application shall be less than 85 % and the surface temperature shall be at least 5 F above the dew point.

C. The Applicator shall be supplied with adequate lighting equal to the final lighting level during the preparation and installation of the system. Apply coatings only when temperature of surfaces to be coated and ambient air temperatures are between 50 and 95 deg F (10 and 35 deg C).

D. Concrete shall be moisture cured for a minimum of 7 days and have fully cured for 14 days in accordance with ACI-308 prior to the application of the coating system pending moisture tests. Outside of these parameters manufacturer shall be consulted.

E. Concrete shall have a flat rubbed finish, float or light steel trowel finish (a hard steel trowel finish is neither necessary nor desirable).

F. Sealers and curing agents should not to be used.

G. Concrete surfaces on grade shall have been constructed with a vapor barrier to protect against the effects of vapor transmission and possible delamination of the system.

1.7 WARRANTY

- A. Manufacturer warrants that material shipped to buyers at the time of shipment substantially free from material defects and will perform substantially to Manufacturer's published literature if used in accordance with the latest prescribed procedures and prior to the expiration date.
- B. Manufacturer's liability with respect to this warranty is strictly limited to the value of the material purchase.

PART 2 - PRODUCTS

2.1 MANUFACTURERS

- A. Manufacturers: Subject to compliance with requirements, provide products by one of the following:
1. Dur-A-Flex Inc., (860) 528-9838 (Basis of Design)
 2. Strata-Shield, TNEMEC

2.2 PRODUCT REQUIREMENTS

- | | | |
|----|--|---------------------------|
| A. | Topping | Poly-Crete MD |
| | 1. Percent Reactive | 100 % |
| | 2. VOC | 0 g/L |
| | 3. Bond Strength to Concrete ASTM D 4541 | 400 psi, substrates fails |
| | 4. Compressive Strength, ASTM C 579 | 7,400 psi |
| | 5. Tensile Strength, ASTM D 638 | 1,800 psi |
| | 6. Impact Resistance @ 125 mils, MIL D-3134,
No visible damage or deterioration | >160 inch lbs |
| B. | Topcoat | Poly-Crete Color-Fast |
| | 1. Percent Solids | 100% |
| | 2. VOC | 0 g/L |
| | 3. Compressive Strength, ASTM C 579 | 7,800 psi |
| | 4. Tensile Strength, ASTM D 638 | 4,200 psi |
| | 5. Flexural Strength, ASTM D 790 | 1,000 psi |
| | 6. Abrasion Resistance, ASTM D 4060
CS-17 wheel, 1,000gm load, 1,000 cycles | 30 mg loss |
| | 7. Impact Resistance, ASTM D 1709 | 160 in.lbs |
| | 8. Shore D Hardness, ASTM D 2240 | 65 |
| | 9. Gloss, ASTM D 523, 60° | Semi-gloss appearance |

PART 3 - EXECUTION

3.1 EXAMINATION

- A. Examine substrates, areas and conditions, with Applicator present, for compliance with requirements for maximum moisture content, installation tolerances and other conditions affecting flooring performance.
 - 1. Verify that substrates and conditions are satisfactory for flooring installation and comply with requirements specified.

3.2 PREPARATION

- A. General: Concrete surfaces shall be free of oil, grease, curing compounds, loose particles, laitance, friable matter, dirt, and bituminous products.
 - 1. Moisture Testing: Perform tests recommended by manufacturer and as follows.
 - a. Perform relative humidity test using in situ probes, ASTM F 2170. Proceed with installation only after substrates have a maximum 99% relative humidity level measurement.
 - b. If the relative humidity exceeds 99% the Architect shall be notified to determine / evaluate possible vapor mitigation systems that have been approved by the manufacturer.
 - c. If the vapor drive exceeds 99% relative humidity or 20 lbs/1,000 sf/24 hrs Architect shall be notified to determine / evaluate possible vapor mitigation systems that have been approved by the manufacturer.
 - 2. Mechanical surface preparation:
 - a. Shot blast all surfaces to receive flooring system with a mobile steel shot, dust recycling machine (Blastrac or equal). All surface and embedded accumulations of paint, toppings hardened concrete layers, laitance, power trowel finishes and other similar surface characteristics shall be completely removed leaving a bare concrete surface having a minimum profile of CSP 4-5 as described by the International Concrete Repair Institute.
 - b. Floor areas inaccessible to the mobile blast machines shall be mechanically abraded to the same degree of cleanliness, soundness and profile using diamond grinders, needle guns, bush hammers, or other suitable equipment.
 - c. Wherever a free edge will occur, including doorways, wall perimeters, expansion joints, columns, doorways, drains and equipment pads, a ¼ inch deep by 3/16 inch wide keyways shall be cut in.
 - d. Cracks and joints (non-moving) greater than 1/4 inch wide are to be chiseled or chipped-out and repaired per manufacturer's recommendations.

3.3 APPLICATION

A. General

1. The system shall be applied in three distinct steps as listed below:
 - a. Substrate preparation
 - b. Topping/overlay application with quartz aggregate broadcast.
 - c. Topcoat application, with a anti-slip aggregate broadcast if required
2. Immediately prior to the application of any component of the system, the surface shall be dry and any remaining dust or loose particles shall be removed using a vacuum or clean, dry, oil-free compressed air.
3. The handling, mixing and addition of components shall be performed in a safe manner to achieve the desired results in accordance with the Manufacturer's recommendations.
4. The system shall follow the contour of the substrate unless pitching or other leveling work has been specified by the Architect.
5. A neat finish with well-defined boundaries and straight edges shall be provided by the Applicator.

B. Topping:

1. The topping shall be applied as a self-leveling system as specified. The topping shall be applied in one lift with a nominal thickness of 3/16 inch.
2. The topping shall be comprised of three components, a resin, hardener and filler as supplied by the Manufacturer.
3. The hardener shall be added to the resin and thoroughly dispersed by suitably approved mechanical means. Aggregate shall then be added to the catalyzed mixture and mixed in a manner to achieve a homogenous blend.
4. The topping shall be applied over horizontal surfaces using a pin rake, trowels or other systems approved by the Manufacturer.
5. Immediately upon placing, the topping shall be degassed with a 15/16 inch spiked roller.
6. Quartz aggregate shall be broadcast to excess into the wet material at the rate of 1 lbs/sf.
7. Allow material to fully cure. Vacuum, sweep and/or blow to remove all loose aggregate.

C. Top Coat:

1. The topcoat shall be mixed and applied per manufacturer recommended procedure.
2. The topcoat shall be comprised of three components, a resin, hardener and filler as supplied by the manufacturer.
3. The topcoat will be applied at the rate of 100 sf per kit (1.1 gal).
4. Non-Skid if required is broadcast at the rate of 1 lb per 100 sf and back rolled into the coating.
5. The finish floor will have a nominal thickness of 1/4 inch.

3.4 FIELD QUALITY CONTROL

- A. The following tests shall be conducted by the Applicator:

1. The following tests shall be conducted by the Applicator:
 - a. Air, substrate temperatures, relative humidity, and, if applicable, dew point.
2. Coverage Rates
 - a. Rates for all layers shall be monitored by checking quantity of material used against the area covered.

3.5 CLEANING AND PROTECTION

- A. At end of each workday, remove rubbish, empty cans, rags, and other discarded materials from Project site.
- B. Cure flooring material in compliance with manufacturer's directions, taking care to prevent their contamination during stages of application and prior to completion of the curing process.
- C. Remove masking. Perform detail cleaning at floor termination, to leave cleanable surface for subsequent work of other sections
- D. Protect work of other trades against damage from coating operation. Correct damage to work of other trades by cleaning, repairing, replacing, and recoating, as approved by Architect, and leave in an undamaged condition.
- E. At completion of construction activities of other trades, touch up and restore damaged or defaced coated surfaces.

END OF SECTION 096723

SECTION 123623.13 - PLASTIC-LAMINATE-CLAD COUNTERTOPS

PART 1 - GENERAL

1.1 RELATED DOCUMENTS

- A. Drawings and general provisions of the Contract, including General and Supplementary Conditions and Division 01 Specification Sections, apply to this Section.

1.2 SUMMARY

- A. Section includes plastic-laminate countertops.

1.3 ACTION SUBMITTALS

- A. Product Data: For each type of product, including panel products high-pressure decorative laminate.
- B. Shop Drawings: Show location of each item, dimensioned plans and elevations, large-scale details, attachment devices, and other components.
 - 1. Show locations and sizes of cutouts and holes for plumbing fixtures installed in plastic-laminate countertops.
- C. Samples for Initial Selection:
 - 1. Plastic laminates.
- D. Samples for Verification:
 - 1. Plastic laminates, **8 by 10 inches (200 by 250 mm)**, for each type, color, pattern, and surface finish, with one sample applied to core material and specified edge material applied to one edge.

1.4 INFORMATIONAL SUBMITTALS

- A. Qualification Data: For Installer and fabricator.
- B. Woodwork Quality Standard Compliance Certificates: AWI Quality Certification Program certificates.
- C. Evaluation Reports: For fire-retardant-treated materials, from ICC-ES.

1.5 QUALITY ASSURANCE

- A. Fabricator Qualifications: Shop that employs skilled workers who custom fabricate products similar to those required for this Project and whose products have a record of successful in-service performance. Shop is a certified participant in AWI's Quality Certification Program.
- B. Installer Qualifications: Demonstrate ability to install products in accordance with specified standards..

1.6 DELIVERY, STORAGE, AND HANDLING

- A. Do not deliver countertops until painting and similar operations that could damage countertops have been completed in installation areas. If countertops must be stored in other than installation areas, store only in areas where environmental conditions comply with requirements specified in "Field Conditions" Article.

1.7 FIELD CONDITIONS

- A. Environmental Limitations: Do not deliver or install countertops until building is enclosed, wet work is complete, and HVAC system is operating and maintaining temperature and relative humidity at occupancy levels during the remainder of the construction period.
- B. Field Measurements: Where countertops are indicated to fit to other construction, verify dimensions of other construction by field measurements before fabrication, and indicate measurements on Shop Drawings. Coordinate fabrication schedule with construction progress to avoid delaying the Work.
- C. Established Dimensions: Where countertops are indicated to fit to other construction, establish dimensions for areas where countertops are to fit. Provide allowance for trimming at site, and coordinate construction to ensure that actual dimensions correspond to established dimensions.

PART 2 - PRODUCTS

2.1 PLASTIC-LAMINATE COUNTERTOPS

- A. Quality Standard: Unless otherwise indicated, comply with the "Architectural Woodwork Standards" for grades indicated for construction, installation, and other requirements.
- B. Grade: Custom.
- C. High-Pressure Decorative Laminate: NEMA LD 3, Grade HGP.
 - 1. Manufacturers: Subject to compliance with requirements, provide products by one of the following:
 - a. Formica Corporation.
 - b. Wilsonart International; Div. of Premark International, Inc.

- D. Colors, Patterns, and Finishes: Provide materials and products that result in colors and textures of exposed laminate surfaces complying with the following requirements:
 - 1. As selected by Architect from manufacturer's full range in the following categories:
 - a. Patterns, matte finish.
- E. Edge Treatment: Lumber edge for transparent finish matching wood species and cut on cabinet surfaces.
- F. Core Material: Medium-density fiberboard made with exterior glue.
- G. Core Thickness: **3/4 inch (19 mm)**.
 - 1. Build up countertop thickness to **1-1/2 inches (38 mm)** at front, back, and ends with additional layers of core material laminated to top.

2.2 WOOD MATERIALS

- A. Wood Products: Provide materials that comply with requirements of referenced quality standard unless otherwise indicated.
 - 1. Wood edges: Solid Red Oak.
 - 2. Wood Moisture Content: 5 to 10 percent.
- B. Composite Wood Products: Provide materials that comply with requirements of referenced quality standard for each type of woodwork and quality grade specified unless otherwise indicated.
 - 1. Medium-Density Fiberboard: ANSI A208.2, Grade 130.
 - 2. Softwood Plywood: DOC PS 1.

2.3 ACCESSORIES

- A. Grommets for Cable Passage through Countertops: **2-inch (51-mm)** OD, black, molded-plastic grommets and matching plastic caps with slot for wire passage.

2.4 MISCELLANEOUS MATERIALS

- A. Adhesives: Do not use adhesives that contain urea formaldehyde.
- B. Adhesive for Bonding Plastic Laminate: Contact cement.
 - 1. Adhesive for Bonding Edges: Hot-melt adhesive.

2.5 FABRICATION

- A. Sand fire-retardant-treated wood lightly to remove raised grain on exposed surfaces before fabrication.
- B. Fabricate countertops to dimensions, profiles, and details indicated. Provide front and end overhang of **1 inch (25 mm)** over base cabinets.
- C. Complete fabrication, including assembly, to maximum extent possible before shipment to Project site. Disassemble components only as necessary for shipment and installation. Where necessary for fitting at site, provide ample allowance for scribing, trimming, and fitting.
- D. Shop cut openings to maximum extent possible to receive appliances, plumbing fixtures, electrical work, and similar items. Locate openings accurately and use templates or roughing-in diagrams to produce accurately sized and shaped openings. Sand edges of cutouts to remove splinters and burrs.
 - 1. Seal edges of openings in countertops with a coat of varnish.

PART 3 - EXECUTION

3.1 PREPARATION

- A. Before installation, condition countertops to average prevailing humidity conditions in installation areas.
- B. Before installing countertops, examine shop-fabricated work for completion and complete work as required, including removal of packing and backpriming.

3.2 INSTALLATION

- A. Grade: Install countertops to comply with same grade as item to be installed.
- B. Assemble countertops and complete fabrication at Project site to the extent that it was not completed in the shop.
 - 1. Provide cutouts for appliances, plumbing fixtures, electrical work, and similar items.
 - 2. Seal edges of cutouts by saturating with varnish.
- C. Field Jointing: Where possible, make in the same manner as shop jointing, using dowels, splines, adhesives, and fasteners recommended by manufacturer. Prepare edges to be joined in shop so Project-site processing of top and edge surfaces is not required. Locate field joints where shown on Shop Drawings.
 - 1. Secure field joints in plastic-laminate countertops with concealed clamping devices located within **6 inches (150 mm)** of front and back edges and at intervals not exceeding **24 inches (600 mm)**. Tighten according to manufacturer's written instructions to exert a constant, heavy-clamping pressure at joints.

- D. Install countertops level, plumb, true, and straight. Shim as required with concealed shims. Install level and plumb to a tolerance of **1/8 inch in 96 inches (3 mm in 2400 mm)**.
- E. Scribe and cut countertops to fit adjoining work, refinish cut surfaces, and repair damaged finish at cuts.
- F. Countertops: Anchor securely by screwing through corner blocks of base cabinets or other supports into underside of countertop.
 - 1. Install countertops with no more than **1/8 inch in 96-inch (3 mm in 2400-mm)** sag, bow, or other variation from a straight line.
 - 2. Backsplashes are to be postformed / integral with top.
 - 3. Side splashes, are to be secured to tops with concealed metal brackets.
 - 4. Seal junctures of tops, splashes, and walls with mildew-resistant silicone sealant or another permanently elastic sealing compound recommended by countertop material manufacturer.

3.3 ADJUSTING AND CLEANING

- A. Repair damaged and defective countertops, where possible, to eliminate functional and visual defects; where not possible to repair, replace woodwork. Adjust joinery for uniform appearance.
- B. Clean countertops on exposed and semiexposed surfaces. Touch up shop-applied finishes to restore damaged or soiled areas.

END OF SECTION 123623.13

SECTION 123700 – STAINLESS STEEL COUNTERTOPS

PART 1 - GENERAL

1.1 RELATED DOCUMENTS

- A. Drawings and general provisions of the Contract, including General and Supplementary Conditions and Division 01 Specification Sections, apply to this Section.

1.2 SUMMARY

- A. Section Includes:
 - 1. Stainless steel countertops.

1.3 ACTION SUBMITTALS

- A. Product Data: For countertop materials.
- B. Shop Drawings: For countertops. Show materials, finishes, edge and backsplash profiles.

1.4 FIELD CONDITIONS

- A. Field Measurements: Verify actual dimensions of construction contiguous with foodservice equipment by field measurements before fabrication. Indicate measurements on Coordination Drawings.

PART 2 - PRODUCTS

2.1 STAINLESS STEEL COUNTERTOPS

- A. Stainless Steel Countertop:
 - 1. Description: Flat-countertop table.
 - a. Tops: Stainless steel, Type 304, 0.078 inch (1.98 mm) thick, reinforced and sound deadened.
 - 1) Back Splash: 4 inches (100 mm).
 - 2) Edge: Bullnose on all exposed sides.
 - 2. Materials:

- a. Stainless Steel Sheet: ASTM A 240/A 240M, austenitic stainless steel, type as indicated.
3. Stainless Steel Finish: Directional satin finish, ASTM A 480/A 480M, No. 4.
- B. Plywood (sub-tops): Exterior softwood plywood complying with DOC PS 1, Grade C-C Plugged, touch sanded.

2.2 MISCELLANEOUS MATERIALS

- A. Installation Accessories, General: NSF certified for end-use application indicated.
- B. Elastomeric Joint Sealant: ASTM C 920; silicone. Type S (single component), Grade NS (nonsag), Class 25, Use NT (nontraffic) related to exposure, and Use M, G, A, or O as applicable to joint substrates indicated.
 1. Cylindrical Sealant Backing: ASTM C 1330, Type C, closed-cell polyethylene, in diameter greater than joint width.

2.3 FINISHES

- A. Stainless Steel Finishes:
 1. Surface Preparation: Remove tool and die marks and stretch lines, or blend into finish.
 2. Polished Finishes: Grind and polish surfaces to produce uniform finish, free of cross scratches.
 - a. Run grain of directional finishes with long dimension of each piece.
 - b. When polishing is completed, passivate and rinse surfaces. Remove embedded foreign matter and leave surfaces chemically clean.

PART 3 - EXECUTION

3.1 INSTALLATION

- A. Install countertops level and plumb, according to manufacturer's written instructions.
- B. Complete equipment assembly where field assembly is required.
 1. Provide closed butt and contact joints that do not require a filler.
 2. Grind field welds on stainless steel equipment until smooth and polish to match adjacent finish.
- C. Install countertops on bases in a bed of sealant.
- D. Install closure-trim strips and similar items requiring fasteners in a bed of sealant.

- E. Install joint sealant in joints between equipment and abutting surfaces with continuous joint backing unless otherwise indicated. Produce airtight, watertight, vermin-proof, sanitary joints.

3.2 CLEANING AND PROTECTING

- A. After completing installation of countertops, repair damaged finishes.
- B. Clean as required to produce ready-for-use condition.
- C. Protect countertops from damage during remainder of the construction period.

END OF SECTION 123700

SECTION 312300 - EXCAVATION AND EMBANKMENT

PART 1 - DESCRIPTION

1.1 This item covers excavation, disposal, placement, and compaction of all materials within the limits of the work required to construct ball site improvements as well as other areas for drainage, building construction, parking, or other purposes in accordance with these specifications and in conformity to the dimensions and typical section(s) shown on the plans.

1.2 CLASSIFICATION. All material excavated shall be classified as defined below:

a. Unclassified Excavation. Unclassified excavation shall consist of the excavation and disposal of all material, regardless of its nature and construction of embankments. This includes stripping, which shall consist of the excavation of topsoil from the area that is to have earthwork performed to depths as identified in Benesch's Geotechnical Engineering Report dated **August 03, 2017** and on the plans. Areas to be stripped shall be excavated as identified on the plans or as directed by the Engineer. Topsoil materials shall be placed in a separate stockpile. After completion of the earthwork, the topsoil materials shall be placed evenly over fill areas to be re-vegetated. Embankment shall consist of all fill materials to construct the embankments as shown on the plans.

b. Not Used.

c. Not Used

d. Not Used.

1.3 Unsuitable Excavation. Any material containing vegetable or organic matter, such as muck, peat, organic silt, or sod shall be considered unsuitable for use in embankment construction. Material, when approved by the Engineer as suitable to support vegetation, may be used on the embankment slope.

PART 2 - CONSTRUCTION METHODS

2.1 General. Before beginning excavation, grading, and embankment operations in any area, the area shall be completely cleared and grubbed.

The suitability of material to be placed in embankments shall be subject to approval by the Engineer. All unsuitable material shall be disposed of off site. All waste areas shall be graded to allow positive drainage of the area and of adjacent areas. The surface elevation of waste areas shall not extend above the surface elevation of adjacent usable areas of the project site, unless specified on the plans or approved by the Engineer.

If the Contractor's excavating operations encounter artifacts of historical or archaeological significance, the operations shall be temporarily discontinued. At the direction of the Engineer, the Contractor shall excavate the site in such a manner as to preserve the artifacts encountered and allow for their removal. Such excavation will be paid for as extra work.

Those areas outside of the pavement areas in which the top layer of soil material has become compacted, by hauling or other activities of the Contractor shall be scarified and disked to a depth of 4 inches (100 mm), in order to loosen and pulverize the soil.

If it is necessary to interrupt existing surface drainage, sewers or under-drainage, conduits, utilities, or similar underground structures, the Contractor shall be responsible for and shall take all necessary precautions to preserve them or provide temporary services. When such facilities are encountered, the Contractor shall notify the Engineer, who shall arrange for their removal if necessary. The Contractor shall, at his/her own expense, satisfactorily repair or pay the cost of all damage to such facilities or structures that may result from any of the Contractor's operations during the period of the contract.

2.2 EXCAVATION. No excavation shall be started until the work has been staked out by the Contractor. All suitable excavated material shall be used in the formation of embankment, subgrade, or for other purposes shown on the plans. All unsuitable material shall be disposed of on the project site at locations designated by the Owner or as shown on the plans.

All areas to be excavated shall be stripped of vegetation and topsoil to the depth shown in the Geotech Report and on the plans. Stripping shall be stockpiled for future use as topdressing/top soiling of areas to be re-vegetated.

No payment will be made for rehandling and/or replacing of the stripping. No payment will be made for stripping, stockpiling, placing but shall be included as subsidiary to "Unclassified Excavation". All stripping/excess material not to be used as topsoil shall be stockpiled as specified on the plans.

The grade shall be maintained so that the surface is well drained at all times. When necessary, temporary drains and drainage ditches shall be installed to intercept or divert surface water that may affect the work.

a. Selective Grading. Where selective grading is indicated on the plans, the more suitable material as designated by the Engineer shall be used in constructing the embankment or in capping the pavement subgrade. If, at the time of excavation, it is not possible to place this material in its final location, it shall be stockpiled in approved areas.

The upper 1.0 foot of the subgrade soils within the limits for areas to be paved shall be constructed of inorganic lean clay (CL), silt (ML), silty sand (SM) or clayey sand (SC) materials with a liquid limit less than 50 and a plasticity index less than 30.

b. Undercutting. Muck, peat, matted roots, or other yielding material, unsatisfactory for subgrade shall be removed to the depth as directed by the Engineer. Unsuitable materials shall be disposed of off Site.

c. Compaction Requirements. The subgrade shall be compacted as specified in paragraph 2.6.

The in-place field density shall be determined in accordance with ASTM D 1556, ASTM D 2167 or ASTM D 6983. Stones or rock fragments larger than 1 inch in their greatest dimension will not be permitted in the top 6 inches (150 mm) of the subgrade. The finished grading operations, conforming to the typical cross section, shall be completed and maintained ahead of the paving operations or as directed by the Engineer.

2.3 Not Used.

2.4 Not Used

2.5 PREPARATION OF EMBANKMENT AREA. Where an embankment is to be constructed to a height of 4 feet (120 cm) or less, all sod and vegetable matter shall be removed from the surface upon

which the embankment is to be placed, and the cleared surface shall be completely broken up by plowing or scarifying to a minimum depth of 6 inches (150 mm). This area shall then be compacted as indicated in paragraph 2.6.

Proof Rolling: Compacted subgrade shall be proof rolled with a tandem axle Dump Truck that is loaded to the legal limit with tires inflated to at least 80 psi in the presence of the Geotech Engineer. Soft areas of subgrade that deflect > 1" or show permanent deformation > 1" shall be either removed and replaced with controlled earth fill or reworked to conform to the moisture content and compaction requirements addressed in paragraph 2.6. Controlled earth fill is defined as earth fill that is designed, compacted and tested in accordance with generally accepted good practice and placed with observation by the Geotech Engineer. Any unstable material should either be removed or replaced with controlled earth fill or reworked to conform to the moisture content and compaction requirements addressed in paragraph 2.6.

No direct payment shall be made for the preparation work performed under this section.

2.6 FORMATION OF EMBANKMENTS. Embankments shall be formed in successive horizontal layers of **not more than 8 inches (200 mm) in loose depth** for the full width of the cross section, unless otherwise approved by the Engineer.

The grading operations shall be conducted, and the various soil strata shall be placed, to produce a soil structure as shown on the typical cross section or as directed. Materials such as brush, hedge, roots, stumps, grass and other organic matter, shall not be incorporated or buried in the embankment.

Operations on earthwork shall be suspended at any time when satisfactory results cannot be obtained because of rain, freezing, or other unsatisfactory conditions of the site. The Contractor shall drag, blade, or slope the embankment to provide proper surface drainage.

The material in the layer shall meet the moisture requirements presented in Table 1 before rolling to obtain the prescribed compaction. In order to achieve a uniform moisture content throughout the layer, wetting or drying of the material and manipulation shall be required when necessary. Should the material be too wet to permit proper compaction or rolling, all work on all of the affected portions of the embankment shall be delayed until the material has dried to the required moisture content. Sprinkling of dry material to obtain the proper moisture content shall be done with approved equipment that will sufficiently distribute the water. Sufficient equipment to furnish the required water shall be available at all times. Density and moisture acceptance tests shall be conducted by the Engineer for each 1,000 square yards of loose 8" material placed or imported and every 1,000 square yards of scarified/recompacted material. Based on these tests, the Contractor shall make the necessary corrections and adjustments in methods, materials or moisture content in order to achieve the correct embankment density.

Rolling operations shall be continued until the embankment is compacted according to the following Compaction Requirements stated in Table 1.

TABLE 1 - Compaction Requirements

Location	Soil Type	Minimum Moisture Content or Range	Minimum Compaction or Range*
From 0.0 to 1.0 foot below pavement subgrade elevation.	Silts and Lean Clays	2% Below Optimum	100%
	Silty and Clayey Sands	**	100%
Greater than 1.0 foot below pavement subgrade elevation.			
	Silts and Lean Clays	2% Below Optimum	95%
	Silty and Clayey Sands	**	95%
Grass Areas	Silts And Clays	2% Below Optimum	92%
Pipe Foundation and Bedding Materials	Crushed Rock or Crushed Concrete	**	96%

* Percent of Maximum Dry Density As determined by ASTM D 698, Procedure A

** Moisture As Necessary To Obtain Density (Near Optimum)

Clean free-draining sand used as backfill shall be consolidated by means of a vibratory compactor to at least 55% “relative density” respectively, as determined in accordance with ASTM D 4253 (Standard Test Methods for Maximum Index Density and Unit Weight of Soils Using a Vibratory Table) and D 4254 (Standard Test Methods for Minimum Index Density and Unit Weight of Soils and Calculations of Relative Density).

On all areas outside of the pavement areas no compaction will be required on the top 4 inches (100 mm) of topsoil.

The in-place field density shall be determined in accordance with ASTM D 1556, ASTM D 6938, or ASTM D 2167.

Compaction areas shall be kept separate, and no layer shall be covered by another until the proper density and moisture content are obtained and approved by the Engineer.

During construction of the embankment, the Contractor shall route his/her equipment at all times, both when loaded and when empty, over the layers as they are placed and shall distribute the travel evenly over the entire width of the embankment. The equipment shall be operated in such a manner that hardpan, cemented gravel, clay, or other chunky soil material will be broken up into small particles and become incorporated with the other material in the layer.

In the construction of embankments, layer placement shall begin in the deepest portion of the fill; as placement progresses, layers shall be constructed approximately parallel to the finished grade line.

Frozen material shall not be placed in the embankment nor shall embankment be placed upon frozen material.

There will be no separate measurement of payment for compacted embankment, and all costs incidental to placing in layers, compacting, disking, watering, mixing, sloping, and other necessary operations for construction of embankments will be included as subsidiary to “Unclassified Excavation”.

2.7 FINISHING AND PROTECTION OF SUBGRADE. After the subgrade has been substantially completed the full width shall be conditioned by removing any soft or other unstable material that will not compact properly. The resulting areas and all other low areas, holes or depressions shall be brought to grade with suitable select material. Scarifying, blading, rolling and other methods shall be performed to provide a thoroughly compacted subgrade shaped to the lines and grades shown on the plans.

Grading of the subgrade shall be performed so that it will drain readily. The Contractor shall take all precautions necessary to protect the subgrade from damage. He/she shall limit hauling over the finished subgrade to that which is essential for construction purposes.

All ruts or rough places that develop in a completed subgrade shall be smoothed and recompacted.

No subbase, base, or surface material shall be placed on the subgrade until the subgrade has been approved by the Geotechnical Engineer

2.8 HAUL. All hauling will be considered a necessary and incidental part of the work. Its cost shall be considered by the Contractor and included in the contract unit price for the pay of items of work involved. No payment will be made separately or directly for hauling on any part of the work.

2.9 TOLERANCES. In those areas upon which a subbase or base course is to be placed, the top of the subgrade shall be of such smoothness that, when tested with a contractor furnished 16-foot (4.8 m) straightedge applied parallel and at right angles to the centerline, it shall not show any deviation in excess of 1/2-inch (12 mm), or shall not be more than 0.05-foot (.015 m) from true grade as established by grade hubs or pins. Any deviation in excess of these amounts shall be corrected by loosening, adding, or removing materials; reshaping; and recompacting by sprinkling and rolling.

In pavement areas, and other designated areas, the surface shall be of such smoothness that it will not vary more than 0.10 foot (0.03 m) from true grade as established by grade hubs. Any deviation in excess of this amount shall be corrected by loosening, adding or removing materials, and reshaping.

2.10 TOPSOIL. When topsoil is specified or required as shown on the plans ~~or under Sections 329200 and 329210~~, it shall be salvaged from stripping or other onsite grading operations. The topsoil shall meet the requirements of Sections 329200 and 329210. If, at the time of excavation or stripping, the topsoil cannot be placed in its proper and final section of finished construction, the material shall be stockpiled at approved locations. Stockpiles shall be placed in locations shown on the plans or as designated in the field by the Engineer. If, in the judgment of the Engineer, it is practical to place the salvaged topsoil at the time of excavation or stripping, the material shall be placed in its final position without stockpiling or further rehandling.

Upon completion of grading operations, stockpiled topsoil shall be handled and placed as directed, or as required in Sections 329200 and 329210.

No direct payment will be made for topsoil. The quantity removed and placed directly or stockpiled shall be subsidiary to "Unclassified Excavation".

TESTING REQUIREMENTS

ECHO ELECTRIC SUPPLY
LINCOLN, NEBRASKA

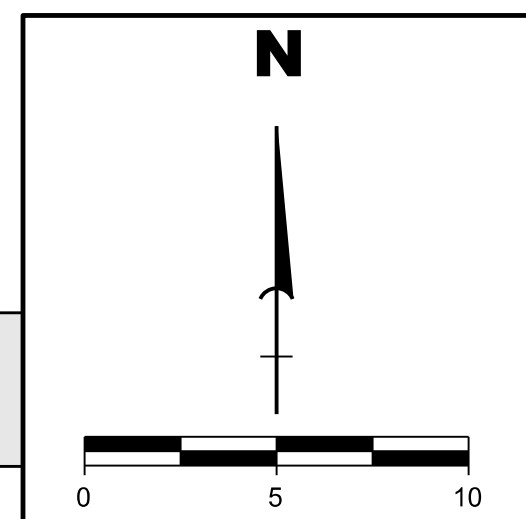
ASTM D 698 Test for Moisture-Density Relations of Soils and Soil-Aggregate Mixtures, Using
5.5-pound (2.49 kg) Rammer and 12-inch (305 mm) Drop

ASTM D 1556 Test for Density of Soil In Place by the Sand-Cone Method

ASTM D 2167 Test for Density and Unit Weight of Soil In Place by the Rubber Balloon Method

ASTM D 6938 In-Place Density and Water Content of Soil and Soil-Aggregate by Nuclear
Methods

END OF SECTION 312300



COLLABORATION

STRUCTURAL ENGINEER
 Vector Structural Design
 601 Old Cheney Road
 Lincoln, NE 68512
 402-525-1450

MECHANICAL/ELECTRICAL ENGINEER
 Engineering Technologies Inc.
 825 M Street, Suite 200
 Lincoln, NE 68508
 402-476-1273

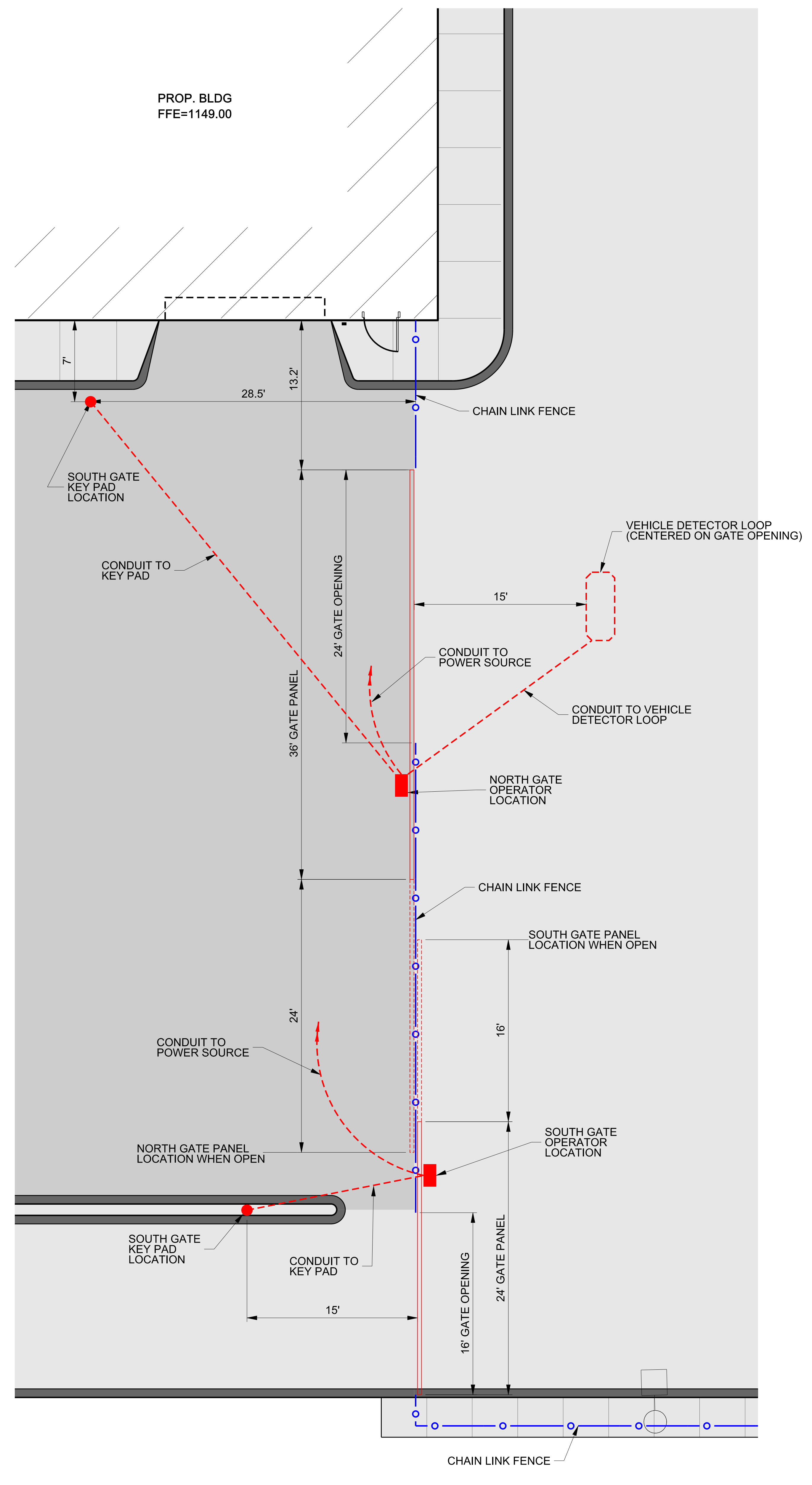
CIVIL ENGINEER
 Benesch
 825 M Street, Suite 100
 Lincoln, NE 68508
 402-479-2200

ECHO Electrical Supply
 3600 N 25TH ST.

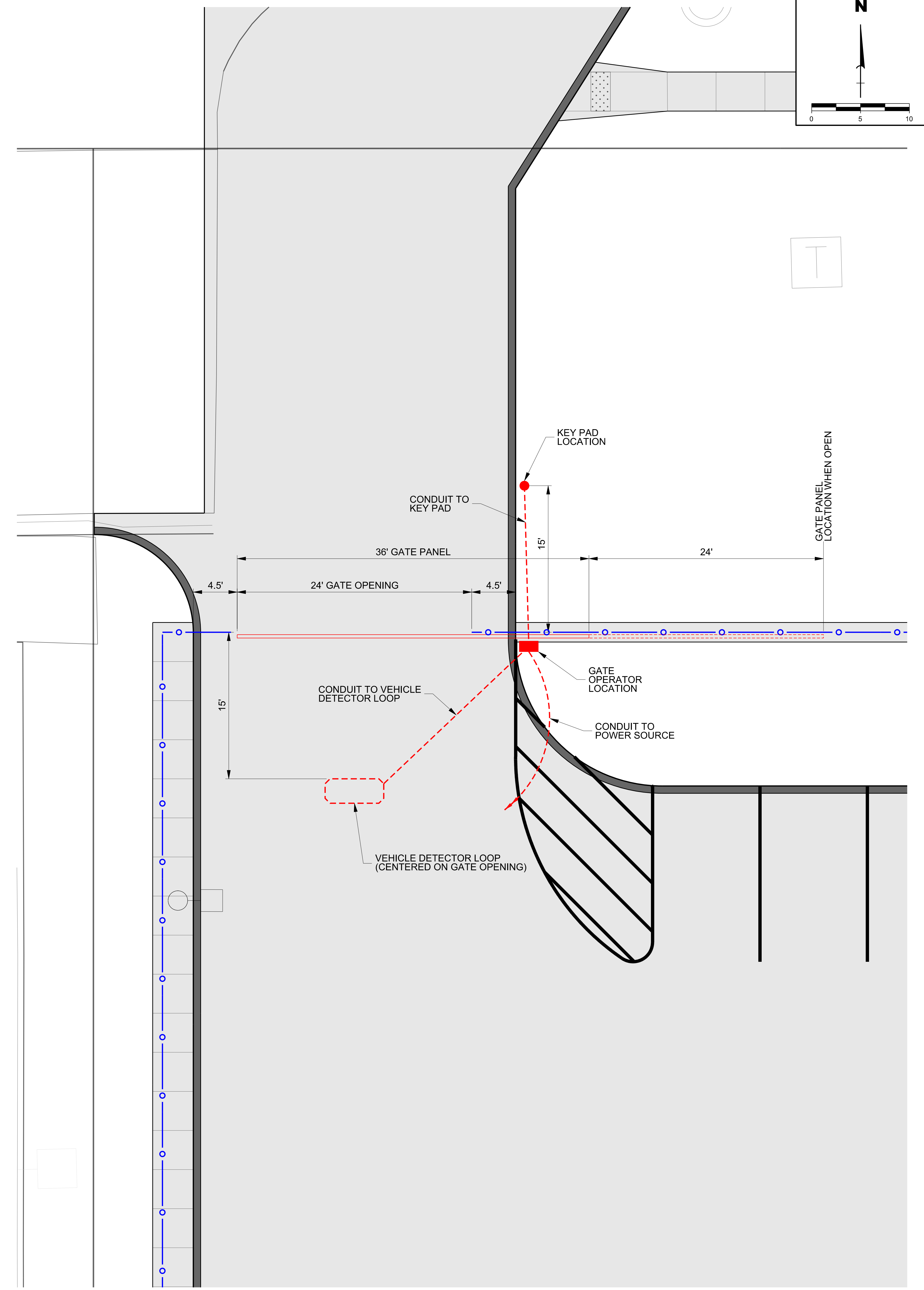
DRAWING TITLE:	
GATE BLOWUP PLAN	
ARCHITECT:	KAC
DRAWN BY:	NLH
ISSUE DATE:	09/12/2017
PROJECT NO.:	17003

C103.5

benesch
 Alfred Benesch & Company
 825 M Street, Suite 100
 Lincoln, Nebraska 68508
 402-479-2200 Job No. 111605.00



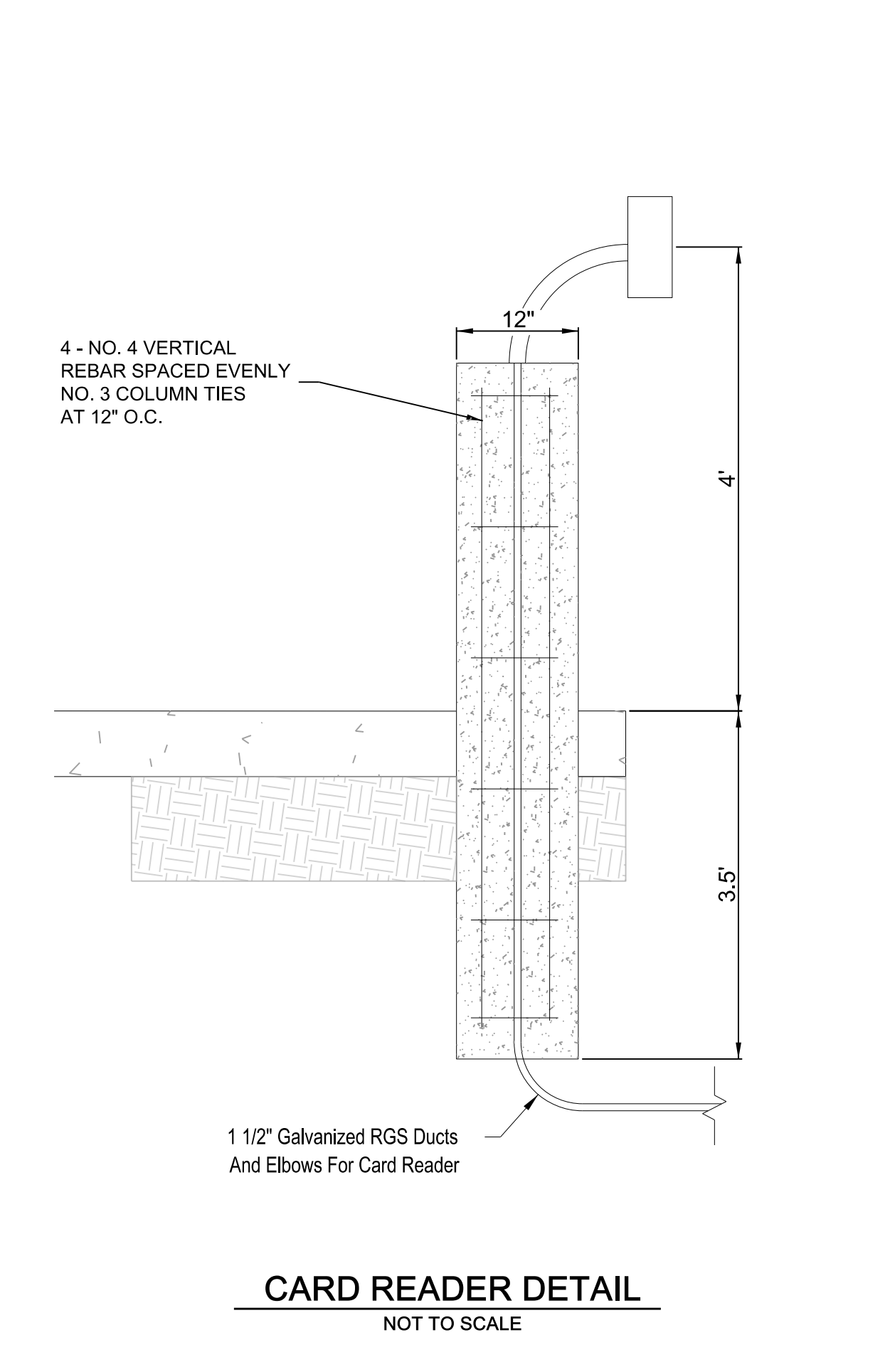
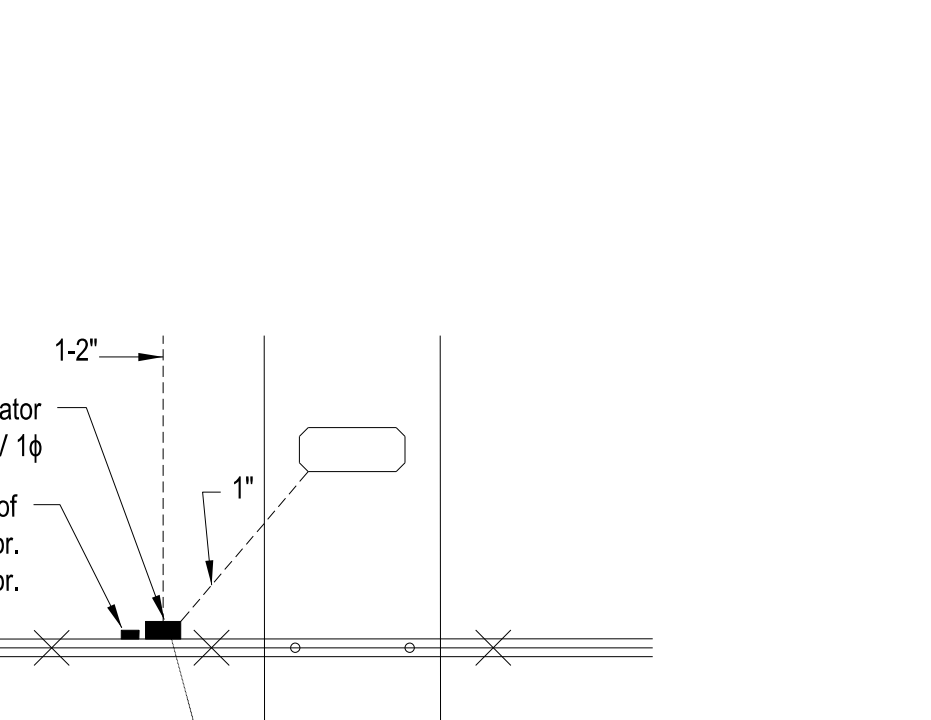
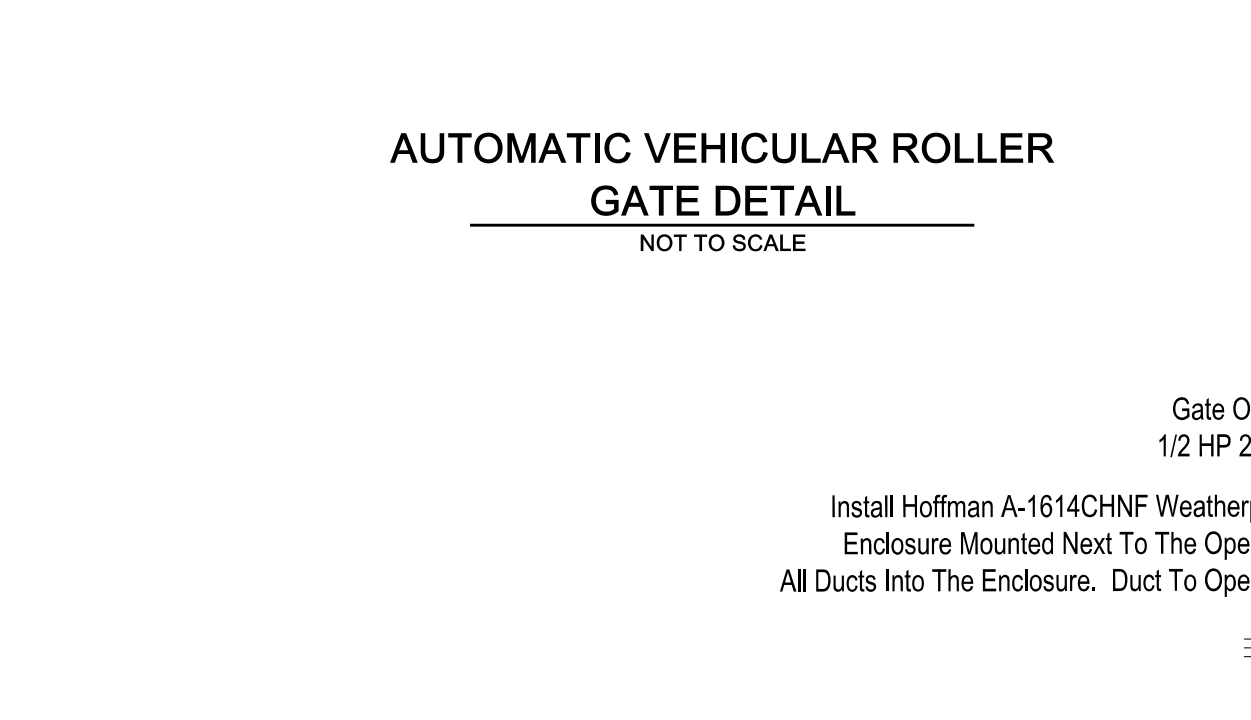
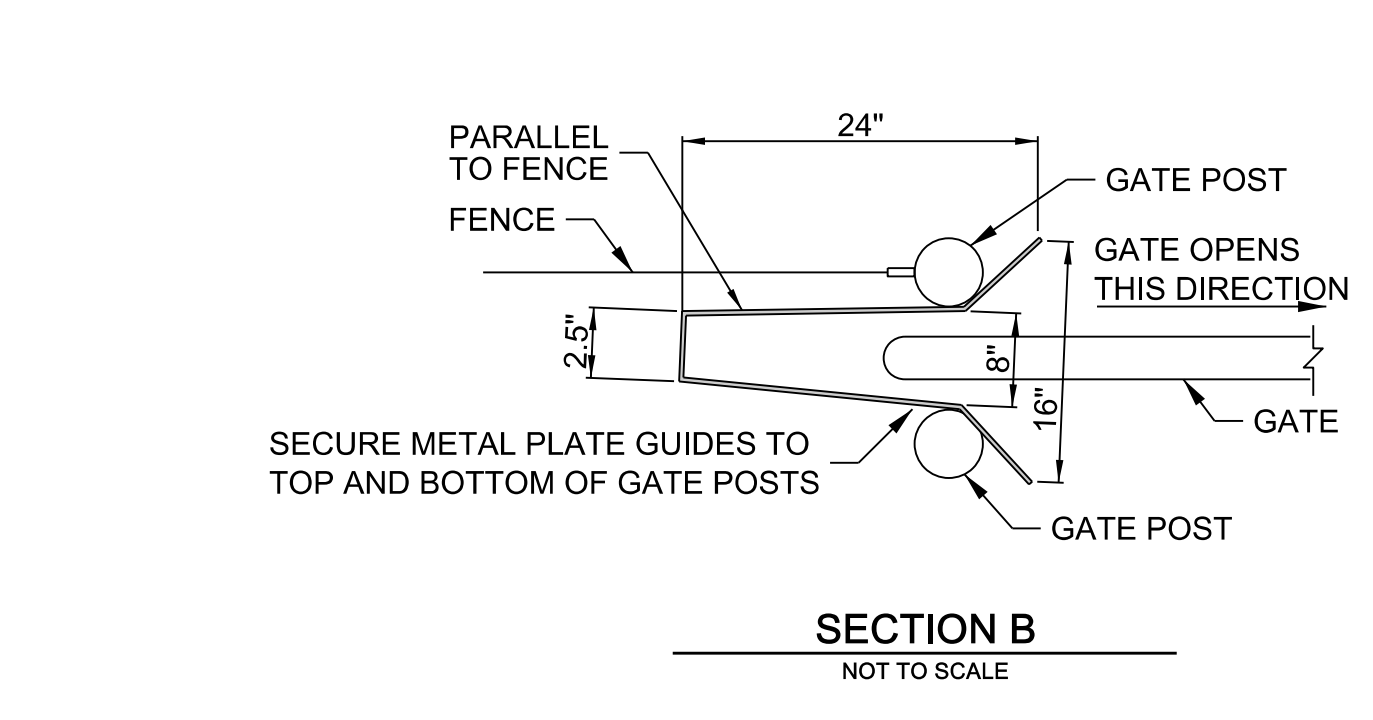
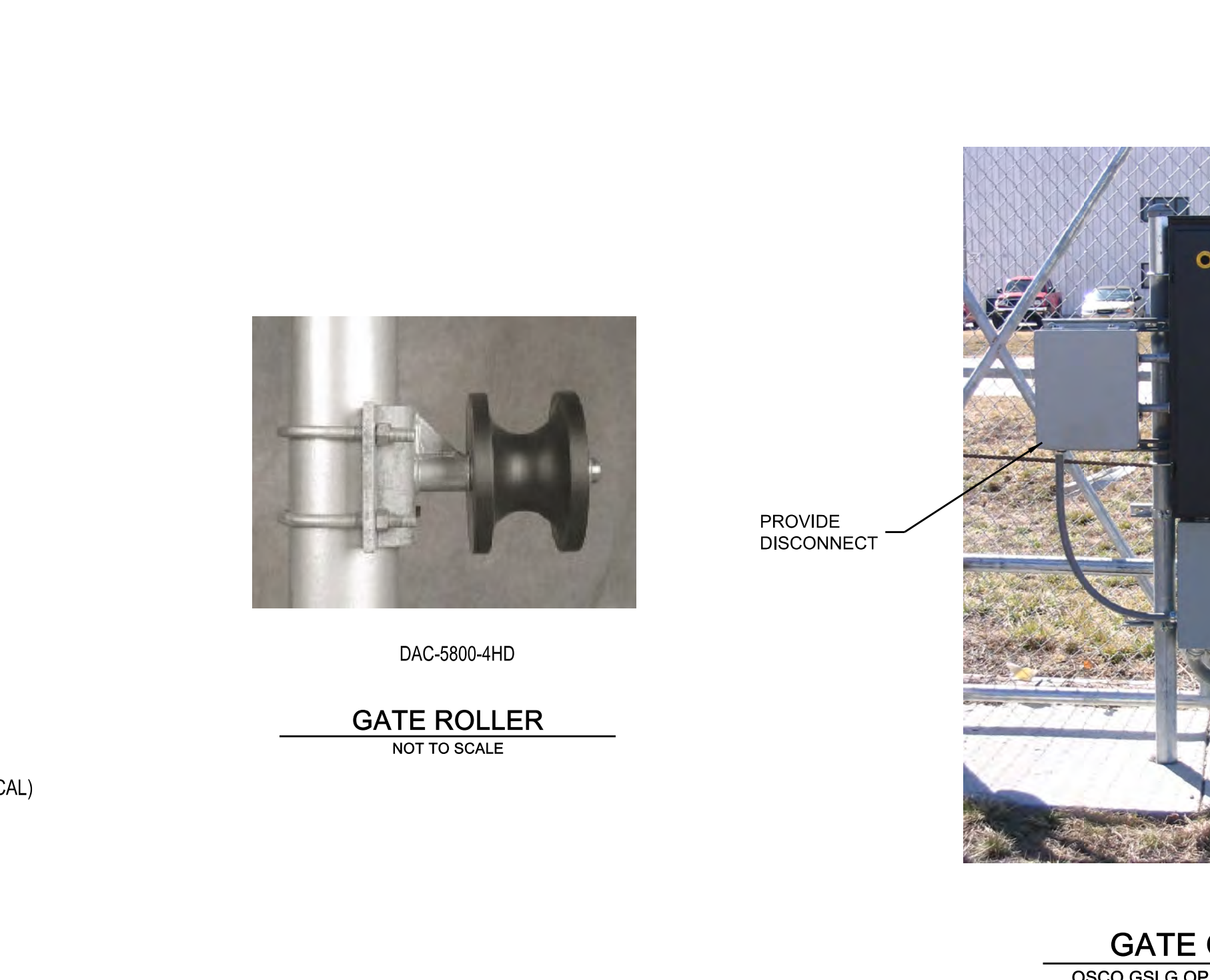
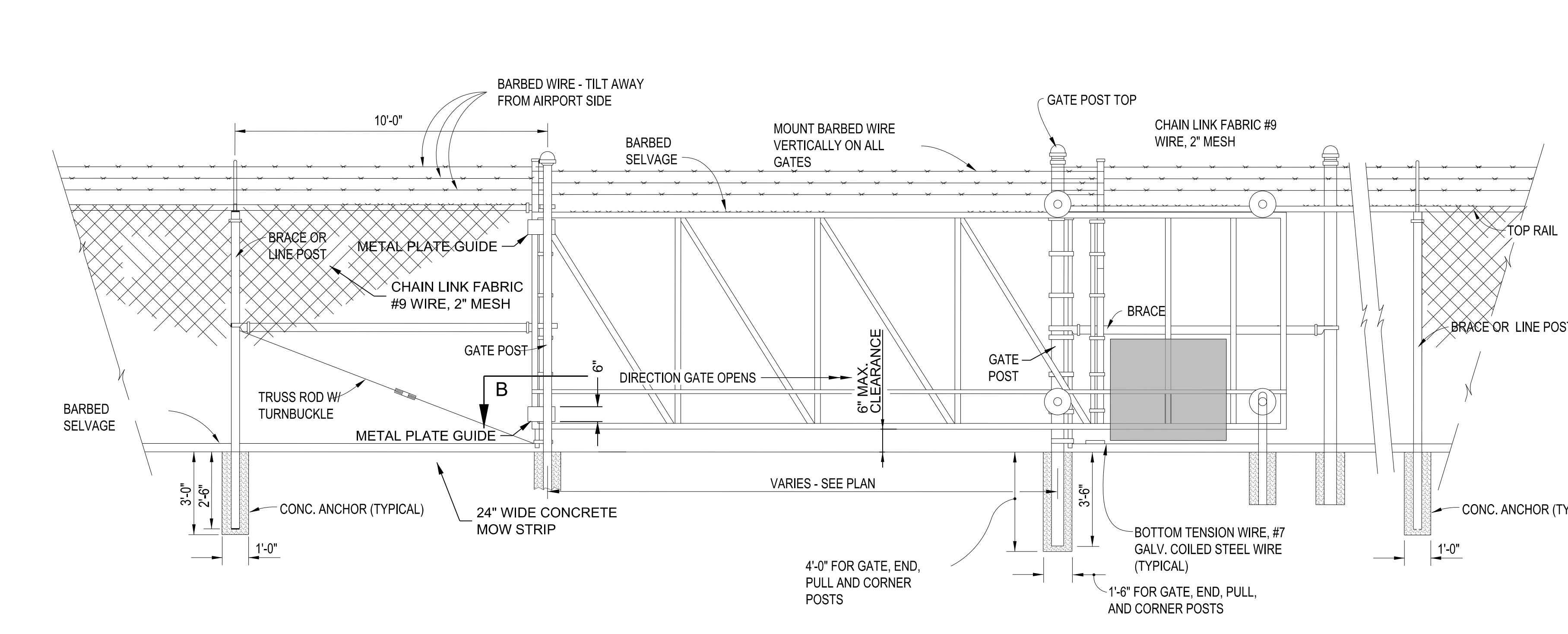
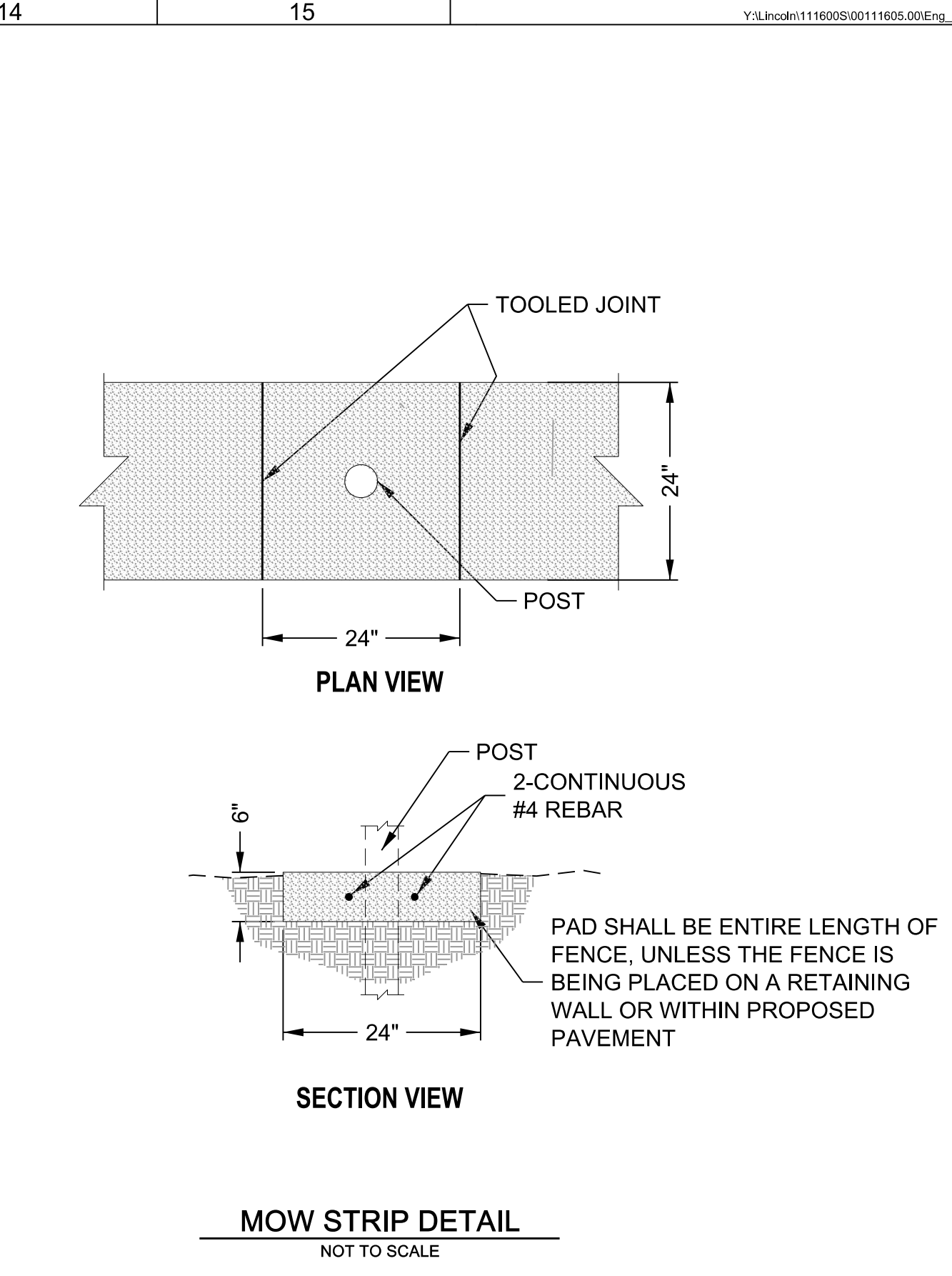
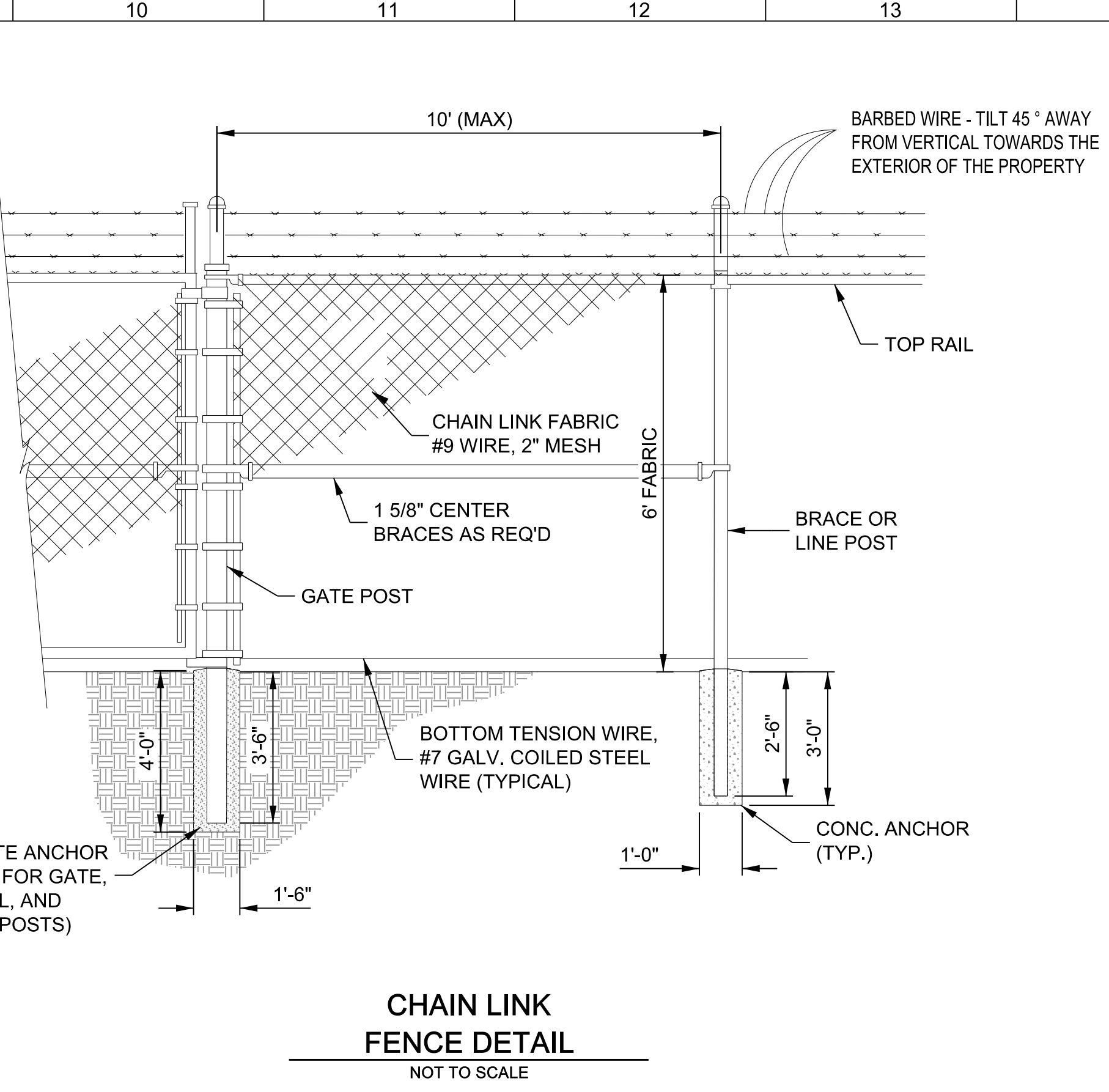
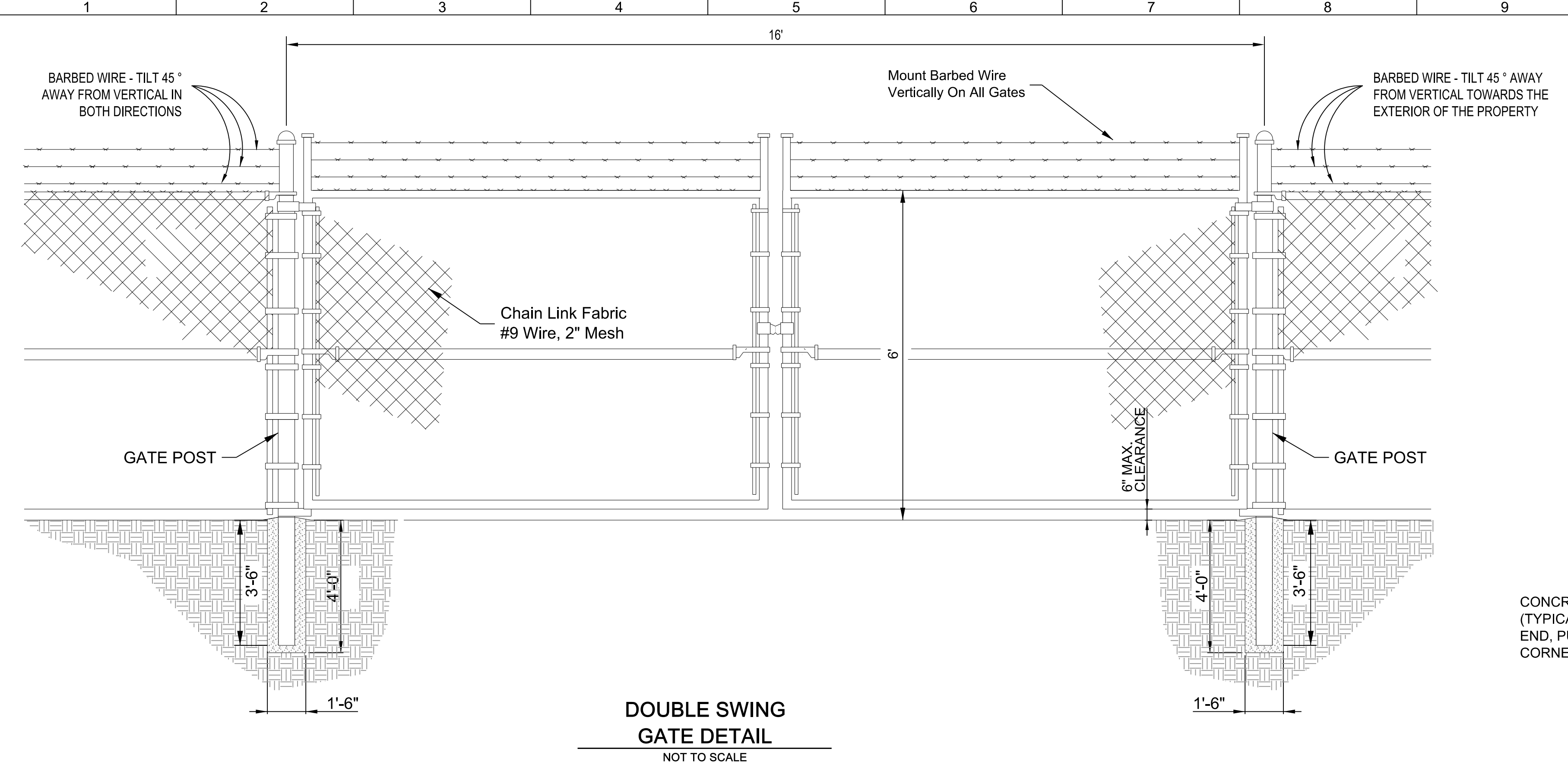
**GATE BLOWUP DETAIL
 SOUTH OF BUILDING**
 NOT TO SCALE



**GATE BLOWUP DETAIL
 FOR NORTH ENTRANCE**
 NOT TO SCALE

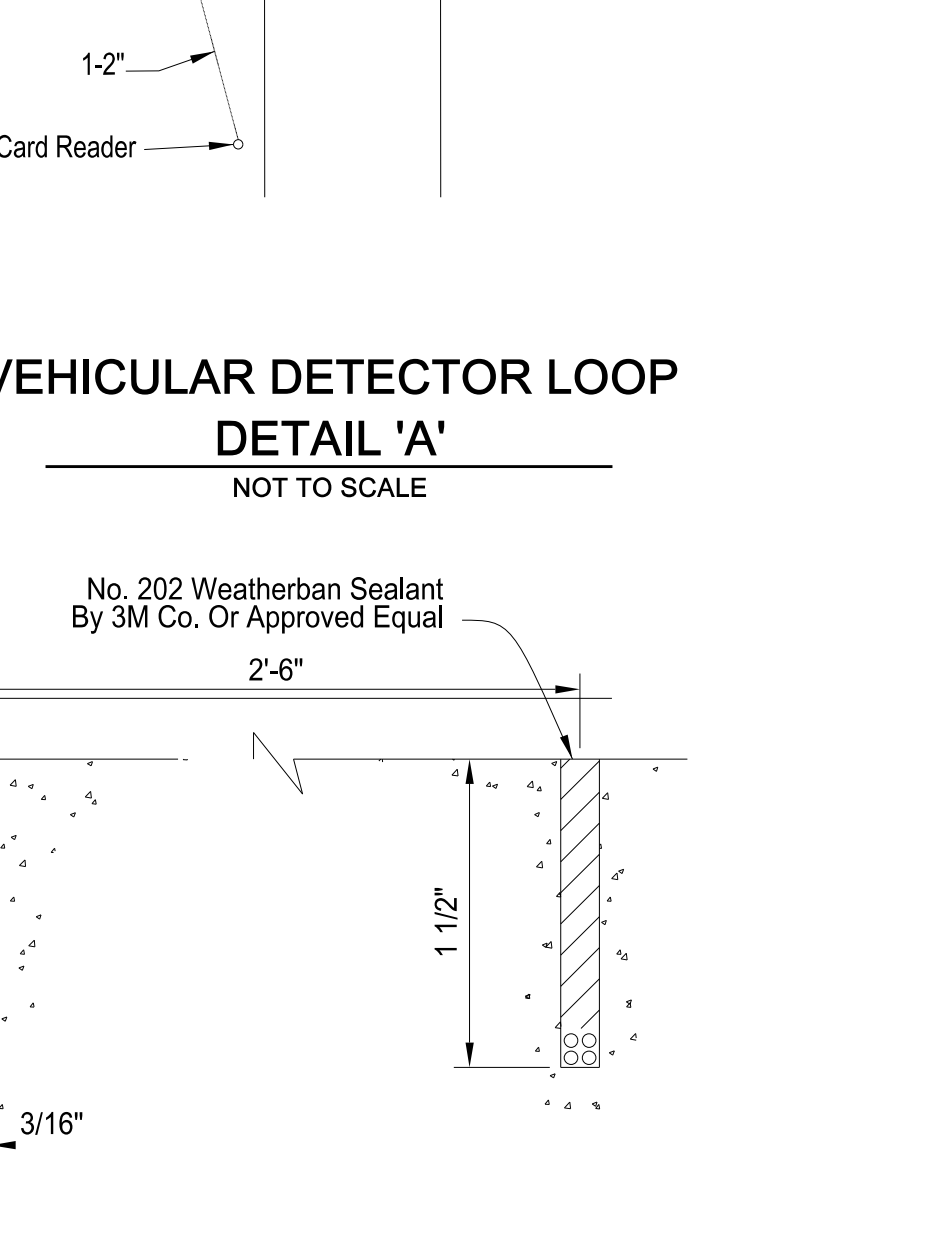
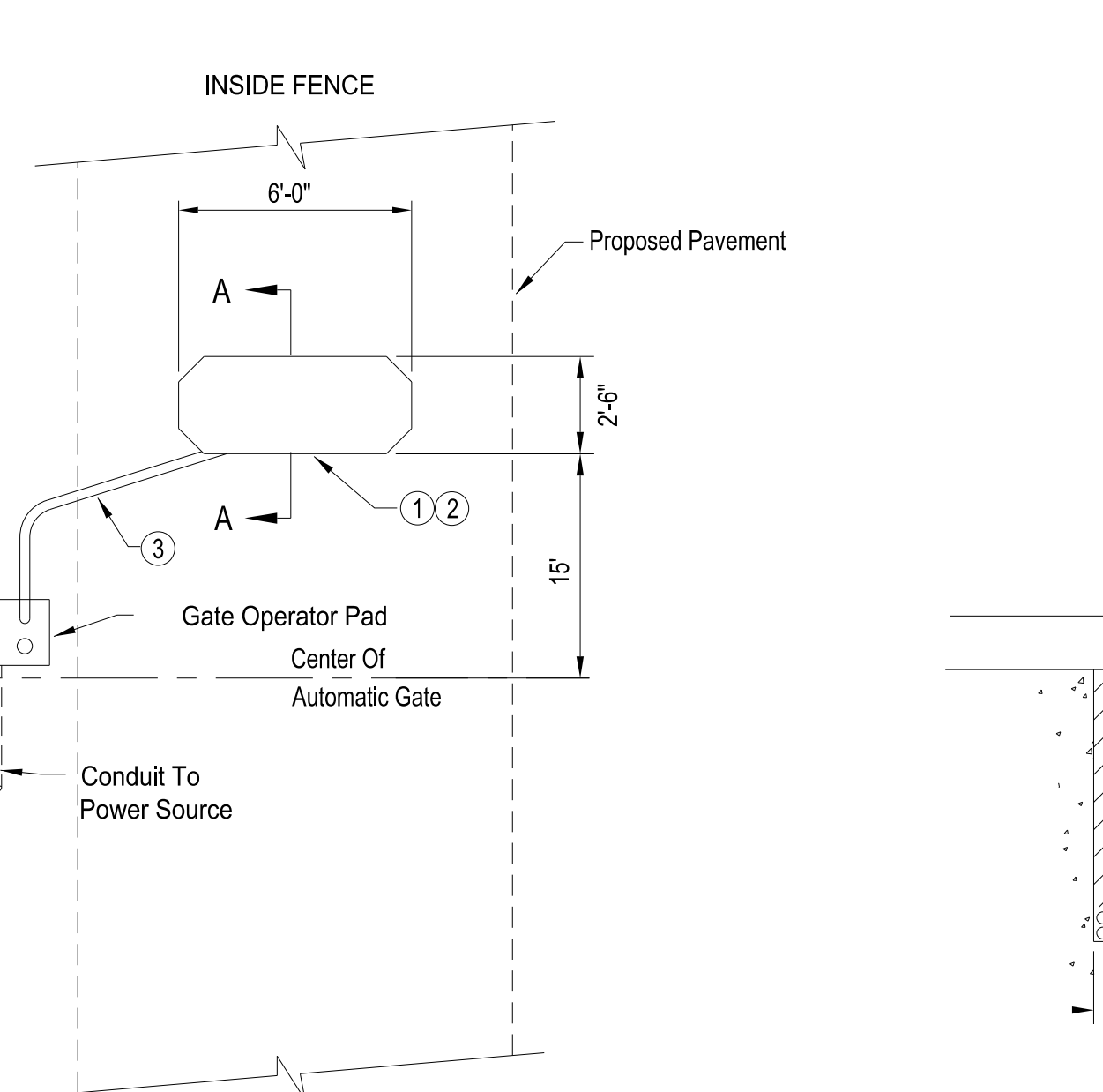
Q
P
N
M
L
K
J
H
G
F
E
D
C
B
A

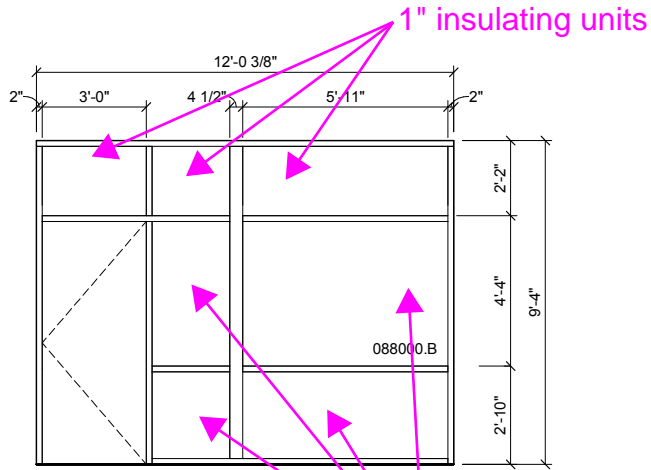
1 2 3 4 5 6 7 8 9 10 11 12 13 14 15



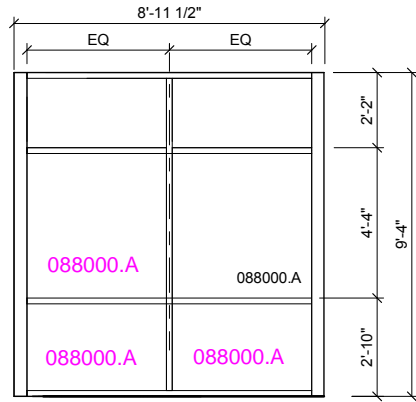
- VEHICULAR ROLLING GATE CONSTRUCTION NOTES**
1. AUTOMATIC VEHICULAR ROLLER GATE SHALL INCLUDE ALL CONSTRUCTION NOTES 1-9 ON THIS SHEET, AND ALSO INCLUDES ANY MISCELLANEOUS ITEMS / EQUIPMENT NECESSARY TO COMPLETE THE INSTALLATION AND OPERATION OF THE NEW GATE.
 2. NEW DETECTOR LOOP. PREFORMED VEHICLE DETECTOR LOOPS UNDER THE PAVEMENT. ONE EACH SAW SLOT 3/16" WIDE AND 1 1/2" DEEP (REFER TO DETAIL ON SHEET 23). MAKE RECTANGULAR SHAPE TO SPECIFIED LOOP DIMENSIONS PLUS SLOT FOR LEAD CONDUIT. GROUT WITH NO. 202 WEATHERBAN SEALANT BY 3M CO. OR APPROVED EQUAL.
 3. LOOPS SHALL BE #16 THIN SINGLE CONDUCTOR STRANDED WIRES WITH 4 TURNS. LEADS FROM LOOPS TO AUTOMATIC GATE OPERATOR PAD SHALL BE TWISTED WITH A MINIMUM OF 10 TWISTS PER FOOT. LOOP LEADS SHALL BE IN CONDUIT FROM LOOPS TO AUTOMATIC GATE OPERATOR PAD. #16 SINGLE CONDUCTOR STRANDED WIRE SHALL MAKE A CONTINUOUS CIRCUIT WITHOUT SPLICES AND SHALL BE CONNECTED TO THE APPROPRIATE SUPPLY SOURCES OR PERFORMED DETECTOR LOOPS.
 4. NEW 1" CONDUIT FROM LOOPS TO GATE OPERATOR. SAW AND PLACE IN PAVEMENT AS NECESSARY.
 5. CONSTRUCT NEW KEY PAD & MOUNTING POLE.
 6. AUTOMATIC GATE OPERATOR SHALL BE OSCO GSLG-A-243 (1/2 H.P., 460 V., 3 PHASE) HEAVY DUTY-COMMERCIAL SLIDE GATE OPERATOR OR PER GATE MANUFACTURER'S RECOMMENDATION. MOUNT ON BRACKETS.
 7. INSTALL HOFFMAN A-1614 CHNF WEATHERPROOF ENCLOSURE MOUNTED NEXT TO THE OPERATOR. ALL DUCTS INTO THE ENCLOSURE, DUCT TO OPERATOR. REFER TO SAMPLE PHOTO ON THIS SHEET.
 8. 2" CONDUIT BETWEEN KEY PAD AND GATE OPERATOR. PLACE UNDER NEW PAVEMENT.
 9. 2" CONDUIT BETWEEN GATE OPERATOR AND PANELBOARD INSIDE BUILDING.

- DETECTOR LOOP NOTES**
1. NEW DETECTOR LOOP. THREE EACH PREFORMED DETECTOR LOOPS UNDER THE PAVEMENT, ONE EACH SAW SLOT 3/16" WIDE AND 1 1/2" DEEP. MAKE RECTANGULAR SHAPE TO SPECIFIED LOOP DIMENSIONS PLUS SLOT FOR LEAD CONDUIT. GROUT WITH NO. 202 WEATHERBAN SEALANT BY 3M CO. OR APPROVED EQUAL.
 2. LOOPS SHALL BE #16 THIN SINGLE CONDUCTOR STRANDED WIRES WITH 4 TURNS. LEADS FROM LOOPS TO AUTOMATIC GATE OPERATOR PAD SHALL BE TWISTED WITH A MINIMUM OF 10 TWISTS PER FOOT. LOOP LEADS SHALL BE IN CONDUIT FROM LOOPS TO AUTOMATIC GATE OPERATOR PAD. #16 SINGLE CONDUCTOR STRANDED WIRE SHALL MAKE A CONTINUOUS CIRCUIT WITHOUT SPLICES AND SHALL BE CONNECTED TO THE APPROPRIATE SUPPLY SOURCES OR PREFORMED DETECTOR LOOPS.
 3. NEW 1" CONDUIT FROM LOOPS TO GATE OPERATOR PAD. PLACED UNDER NEW PAVEMENT.

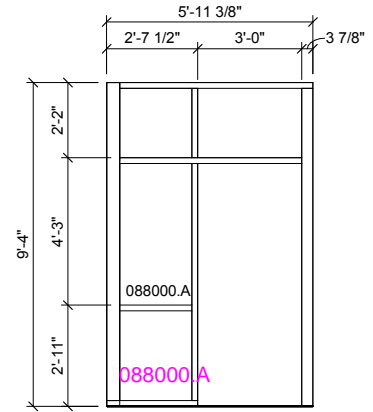




AL-1
084113.A

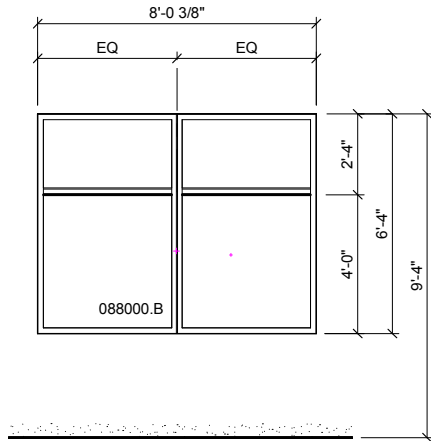


AL-2
084113.A

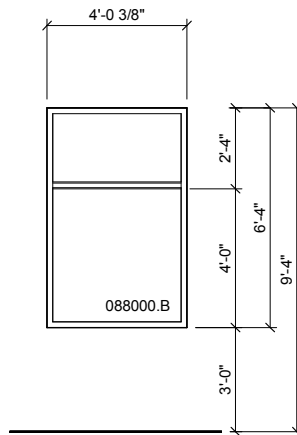


AL-3
084113.A

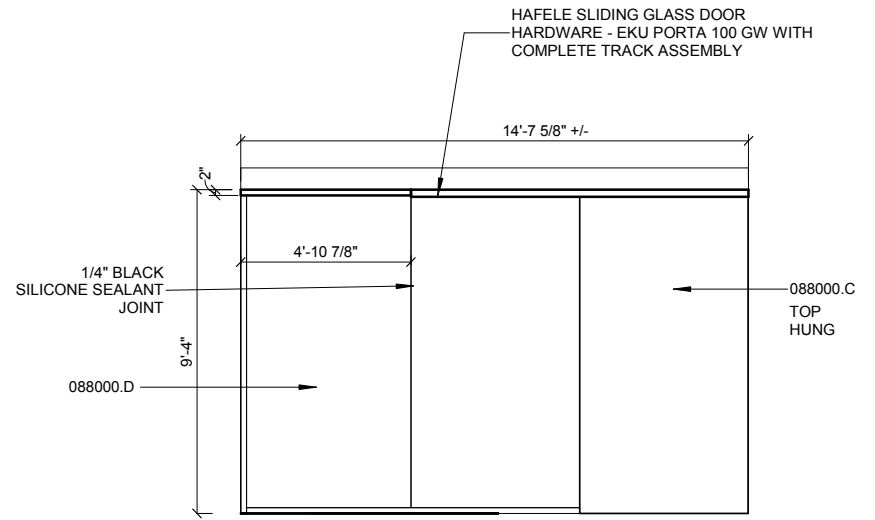
1" insulating units
made with tempered
glass



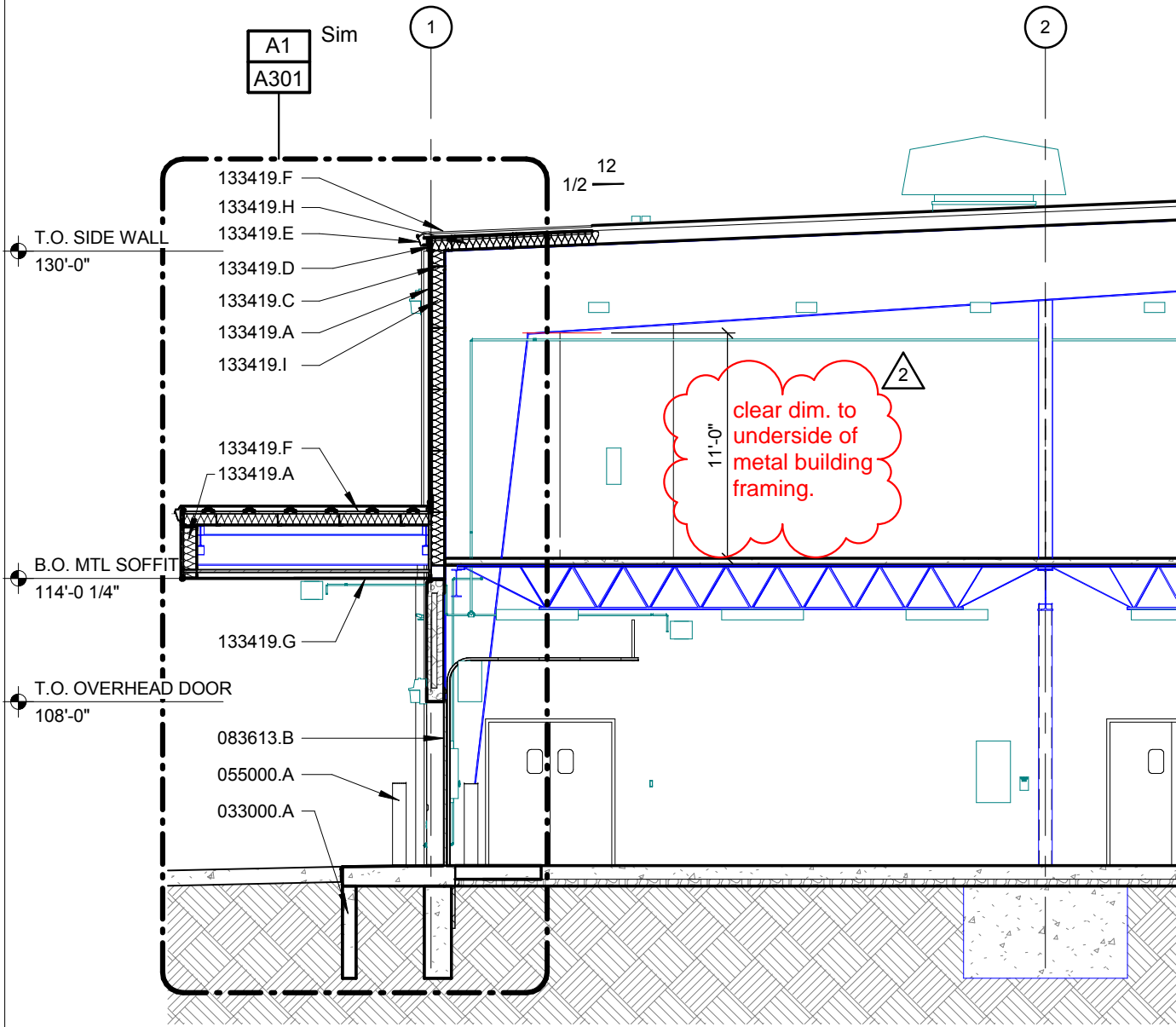
AL-4
084113.B



AL-5
084113.B



AL-6
084113.A

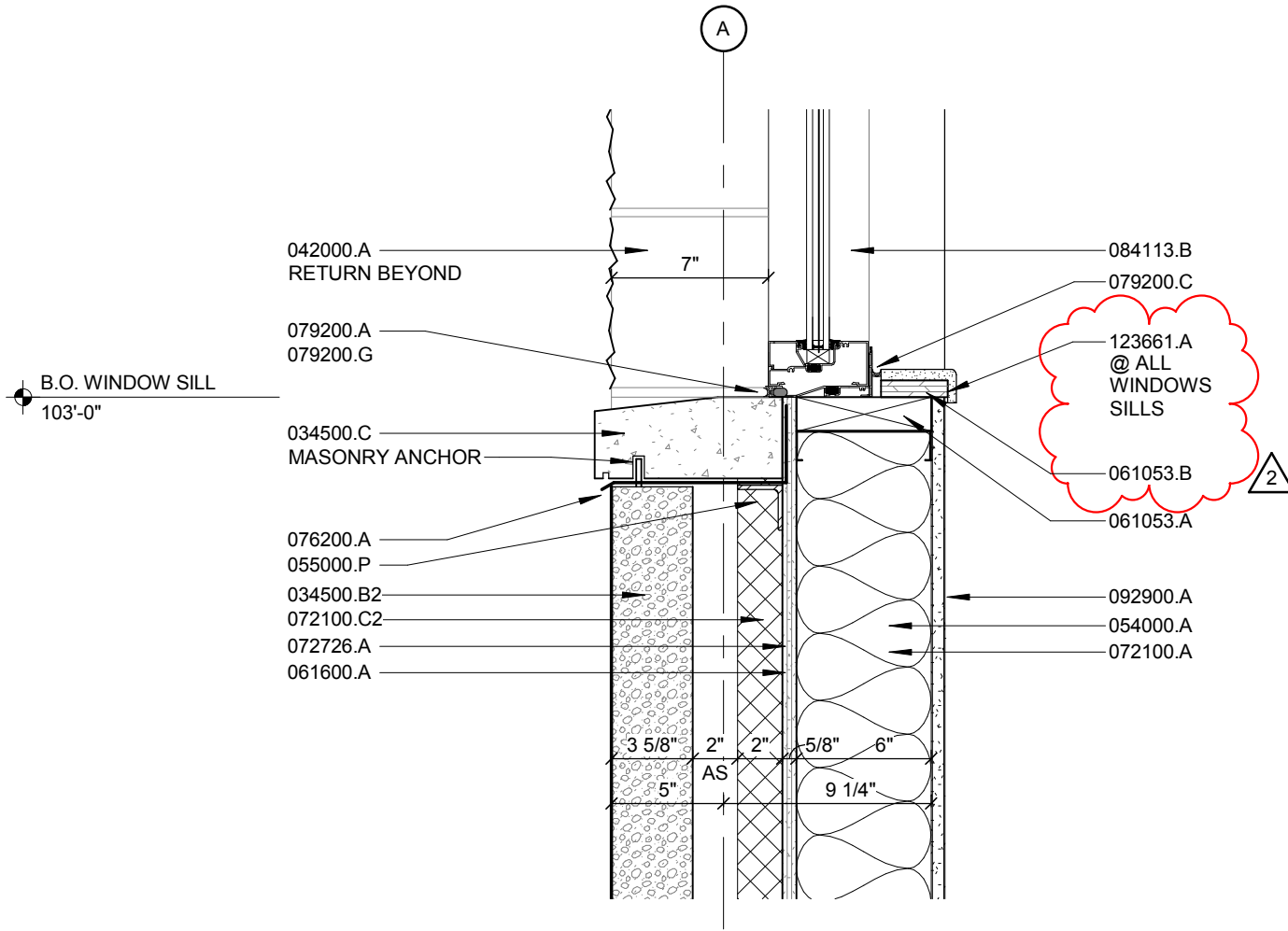


AAD-02 ADDENDUM 02 - 09/21/17

A5

BUILDING SECTION 2

33419.B



AAD-03 ADDENDUM 02 - 09/21/17

A12

SECTION DETAIL

SCALE: 1 1/2" = 1'-0"

ALUMINUM WINDOW SILL

12

13

14

15

D

C

B

A

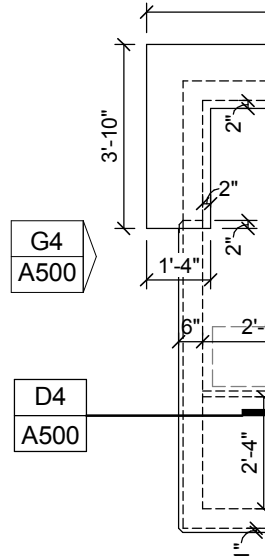
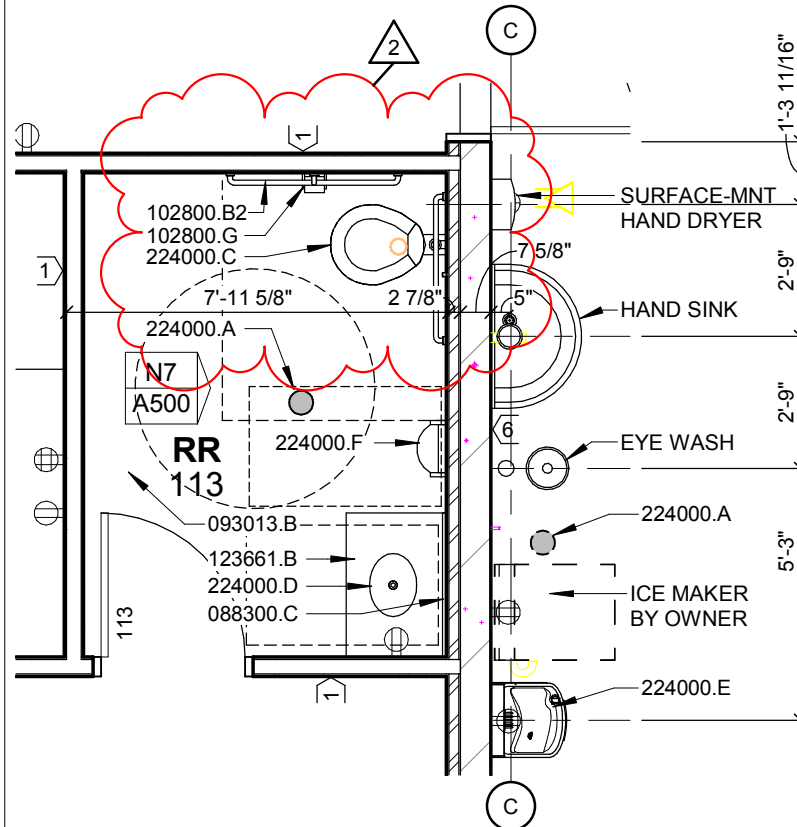
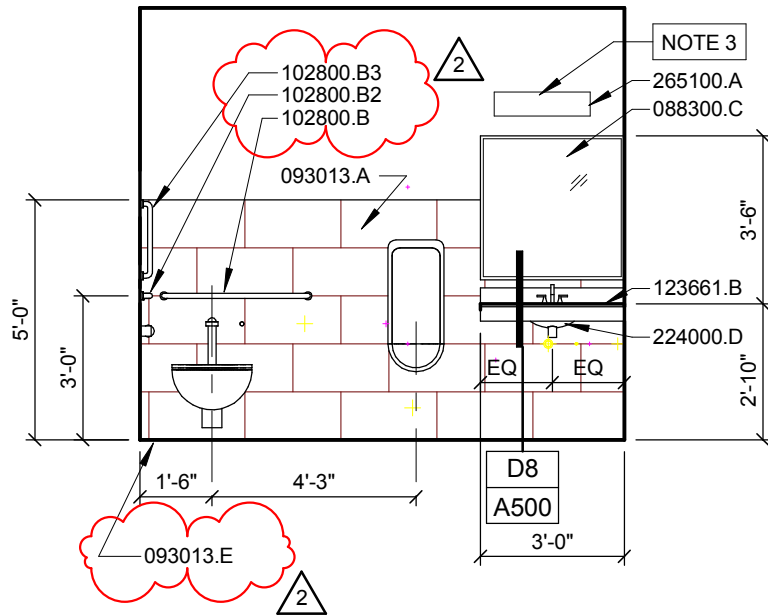
7

8

9

10

11



N7

INTERIOR ELEV.

N9

ENLARGED PLAN

SCALE: 1/4" = 1'-0"

RESTROOM 113 LOOKING EAST

SCALE: 1/4" = 1'-0"

RESTROOM 113

1 2 3 4 5 6 7 8

ROOM FINISH SCHEDULE

No.	Name	Floor Finish	Base	North Wall		East Wall		South Wall		West Wall		CEILING		NOTES	No.
				Material	Finish	Material	Finish	Material	Finish	Material	Finish	Material	Finish		
First Floor															
-	EXTERIOR STORAGE														
100	VEST	CPT-2	VB	GWB	PNT	-	-	-	-	-	-	GWB	PNT		100
101	WAITING	POLISHED CONC	VB	-	-	-	-	GWB	PNT	-	-	EXP. STRUCT.	PNT	3, 4, 6	101
102	RECEPTION	POLISHED CONC	VB	-	-	GWB	PNT	GWB	PNT	-	-	EXP. STRUCT.	PNT	3, 4, 6	102
103	WK RM	POLISHED CONC	VB	GWB	PNT	GWB	PNT	GWB	PNT	GWB	PNT	EXP. STRUCT.	PNT	3, 4, 6	103
104	CONF.	CPT-1	VB	GWB	PNT	-	-	GWB	*WB PNT	GWB	PNT	EXP. STRUCT.	PNT	1, 3, 4, 6	104
105	OFFICE	CPT-1	VB	GWB	PNT	GWB	PNT	GWB	PNT	GWB	PNT	APC	--		105
106	OFFICE	CPT-1	VB	GWB	PNT	GWB	PNT	GWB	PNT	GWB	PNT	APC	--		106
107	OFFICE	CPT-1	VB	GWB	PNT	GWB	PNT	GWB	PNT	GWB	PNT	APC	--		107
108	SM CONF.	CPT-1	VB	GWB	PNT	GWB	PNT	GWB	*WB PNT	GWB	PNT	APC	--	1	108
109	OFFICE	CPT-1	VB	GWB	PNT	GWB	PNT	GWB	PNT	GWB	PNT	APC	--		109
110	OFFICE	CPT-1	VB	GWB	PNT	GWB	PNT	GWB	PNT	GWB	PNT	APC	--		110
111	OFFICE	CPT-1	VB	GWB	PNT	GWB	PNT	GWB	PNT	GWB	PNT	APC	--		111
112	OFFICE	CPT-1	VB	GWB	PNT	GWB	PNT	GWB	PNT	GWB	PNT	APC	--		112
113	RR	EPOXY CONC	-	CT-2/GWB	-- / PNT	CT-2/GWB	-- / PNT	CT-2/GWB	-- / PNT	CT-2/GWB	-- / PNT	GWB	PNT	7, 8	113
114	OPEN OFFICE	POLISHED CONC	VB	GWB	PNT	GWB	PNT	GWB	PNT	GWB	PNT	EXP. STRUCT.	PNT	3, 4, 6	114
115	OFFICE/STOR.	CPT-1	VB	GWB	PNT	GWB	PNT	GWB	PNT	GWB	PNT	APC	--		115
116	MEN	CT-1	-	CT-2/GWB	-- / PNT	CT-2/GWB	-- / PNT	CT-2/GWB	-- / PNT	CT-2/GWB	-- / PNT	GWB	PNT	7, 8	116
117	MECH.	SEALED CONC	VB	GWB	PNT	GWB	PNT	GWB	PNT	GWB	PNT	EXP. STRUCT.	--		117
118	WOMEN	CT-1	-	CT-2/GWB	-- / PNT	CT-2/GWB	-- / PNT	CT-2/GWB	-- / PNT	CT-2/GWB	-- / PNT	GWB	PNT	7, 8	118
120	CONFERENCE	LVT-1	VB	GWB	PNT	GWB	PNT	GWB	PNT	GWB	PNT	APC	--		120
120C	STOR.	SEALED CONC	VB	GWB	PNT	GWB	PNT	GWB	PNT	GWB	PNT	GWB	PNT		120C
121	MECH.	SEALED CONC	VB	GWB	PNT	GWB	PNT	GWB	PNT	GWB	PNT	EXP. STRUCT.	--		121
122	KITCHEN	POLISHED CONC	VB	GWB	PNT	GWB	PNT	GWB	PNT	GWB	PNT	APC	--		122
123	CORRIDOR	POLISHED CONC	VB	GWB	PNT	GWB	PNT	GWB	PNT	-	-	EXP. STRUCT.	PNT		123
126	CITY SALES	POLISHED CONC	VB	GWB	PNT	GWB	PNT	GWB	PNT	GWB	PNT	EXP. STRUCT.	PNT	3, 4, 6	126
127	WAREHOUSE	SEALED CONC	VB	PC	-	PC	-	PC	-	PC	-	EXP. STRUCT.	PNT		127
127A	WILL-CALL	SEALED CONC	VB	PC	-	PC	-	PC	-	PC	-	EXP. STRUCT.	PNT	3, 4, 6	127A
128	SHIPPING & RECEIVING	SEALED CONC	VB	PC	-	PC	-	PC	-	PC	-	EXP. STRUCT.	PNT		128
129	OFFICE	SEALED CONC	VB	GWB	PNT	GWB	PNT	GWB	PNT	GWB	PNT	GWB	PNT		129
130	STAIR A	SEALED CONC	VB	EXP / GWB	-- / PNT	GWB	PNT	GWB	PNT	EXP / GWB	-- / PNT	GWB	PNT		130
131	STAIR B	RB	-	-	-	-	-	-	-	-	-	EXP. STRUCT.	PNT		131
132	STAIR C	RB	-	-	-	-	-	-	-	-	-	EXP. STRUCT.	PNT		132
SECOND FLOOR															
200	INVENTORY	SEALED CONC	VB	PC	-	PC	-	PC	-	PC	-	EXP. STRUCT.	PNT		200
201	WORK RM	SEALED CONC	VB	GWB	PNT	GWB	PNT	GWB	PNT	GWB	PNT	GWB	PNT		201
202	IT	SEALED CONC	VB	PLYWD	-	PLYWD	-	PLYWD	-	PLYWD	-	GWB	PNT		202
203	WORK RM	SEALED CONC	VB	GWB	PNT	GWB	PNT	GWB	PNT	GWB	PNT	GWB	PNT		203
204	MECH RM	SEALED CONC	VB	GWB	PNT	GWB	PNT	GWB	PNT	GWB	PNT	GWB	PNT		204
205	STAIR A	SEALED CONC	VB	GWB	PNT	GWB	PNT	GWB	PNT	GWB	PNT	GWB	PNT	5	205
206	STAIR B	RB	-	-	-	-	-	-	-	-	-	EXP. STRUCT.	PNT	5	206
207	STAIR C	RB	-	-	-	-	-	-	-	-	-	EXP. STRUCT.	PNT	5	207

ROOM FINISH SCHEDULE NOTES

- WHITE BOARD PAINT FINISHED FLOOR TO FINISHED CEILING.
- ROOMS 119, 124, 125 ARE NOT USED.
- EXPOSED STRUCTURE - ALL EXPOSED STRUCTURAL STEEL IS TO HAVE A PAINT FINISH.
- EXPOSED METAL FLOOR DECK - ALL EXPOSED METAL FLOOR DECK IS TO REMAIN AS AN UNPAINTED GALVANIZED FINISH.

ROOM FINISH SCHEDULE NOTES

- STAIR STRINGERS ARE TO HAVE PAINT FINISH. STAIRS TO HAVE RUBBER TREADS AND RISERS.
- EXPOSED DUCTWORK - ALL EXPOSED DUCTWORK IS TO HAVE A PAINT FINISH.
- USE 093013 E SCHLUTER ALUMINUM COVE-SHAPED PROFILE FOR TILE BASE.
- PAINT GWB ABOVE CERAMIC WALL TILE.



B.O. STRUCT.

WALL TYPE 1
092216.B - 3 5/8" METAL STUDS @ 16" O.C.
092900.A - 5/8" TYPE 'X' GYPSUM WALLBOARD, BOTH SIDES
072100.D - SOUND BATT INSULATION

WALL TYPE 2
092216.C - 6" METAL STUDS @ 16" O.C.
092900.A - 5/8" TYPE 'X' GYPSUM WALLBOARD, BOTH SIDES
072100.D - SOUND BATT INSULATION

WALL TYPE 3
092216.D - 8" METAL STUDS @ 16" O.C.
092900.A - 5/8" TYPE 'X' GYPSUM WALLBOARD, BOTH SIDES
072100.D - SOUND BATT INSULATION

WALL TYPE 4
092216.B - 3 5/8" METAL STUDS @ 16" O.C.
092900.A - 5/8" TYPE 'X' GYPSUM WALLBOARD, ONE SIDE
072100.D - SOUND BATT INSULATION

FIN. FLR

WALL TYPE 1.1
092216.B - 3 5/8" METAL STUDS @ 16" O.C.
092900.A - 5/8" TYPE 'X' GYPSUM WALLBOARD, BOTH SIDES

WALL TYPE 2
092216.C - 8" METAL STUDS @ 16" O.C.
092900.A - 5/8" TYPE 'X' GYPSUM WALLBOARD, BOTH SIDES

WALL TYPE 4.1
092216.B - 3 5/8" METAL STUDS @ 16" O.C.
092900.A - 5/8" TYPE 'X' GYPSUM WALLBOARD, ONE SIDE

1 SEE NOTE BELOW
1a SEE NOTE BELOW
1.1a SEE NOTE BELOW
1.1a 10' A.F.F.

2
2.1

3

4 SEE NOTE BELOW
4a SEE NOTE BELOW
4.1 SEE NOTE BELOW

AAD-05 ADDENDUM 02 - 09/21/17

Door No.
First F.
100
100a
104
105
106
107
108
109
110
111
112
113
115
116
117
118
120a
120b
120c
121
122
122a
122b
123
124
125
126
126a
126b
127a
127b
127c
127d
127e
128
128a
128b
128c
128d
128e
128f
128g
129
130
SECC
201
202
203
204
205

72100.A
92900.A
92216.C
54000.B

3.A

CITY SALES
126

ESSED THRESHOLD

00.B
00.D
00.C

00.C
00.A

B.O. CANOPY
109'-4"

T.O. SILL
103'-0"

095113.B
072100.D
092900.A
072100.A

5"
9 1/4"

034500.B
061600.A
072100.C2
072726.A

034500.D

SM CONF.
108



034500.B2
PRECAST CLADDING
EXTENDS TO TOP OF
FOOTING - TYP.

079200.B
321313.A

096513.A
033000.B
033000.D
033000.C

033000.A

072100.C
033000.J

AAD-06 ADDENDUM 02 - 09/21/17

A9

WALL SECTION

SCALE: 1/2" = 1'-0"

WEST WALL AT PRECAST PANEL VENEER

8

9

10

11

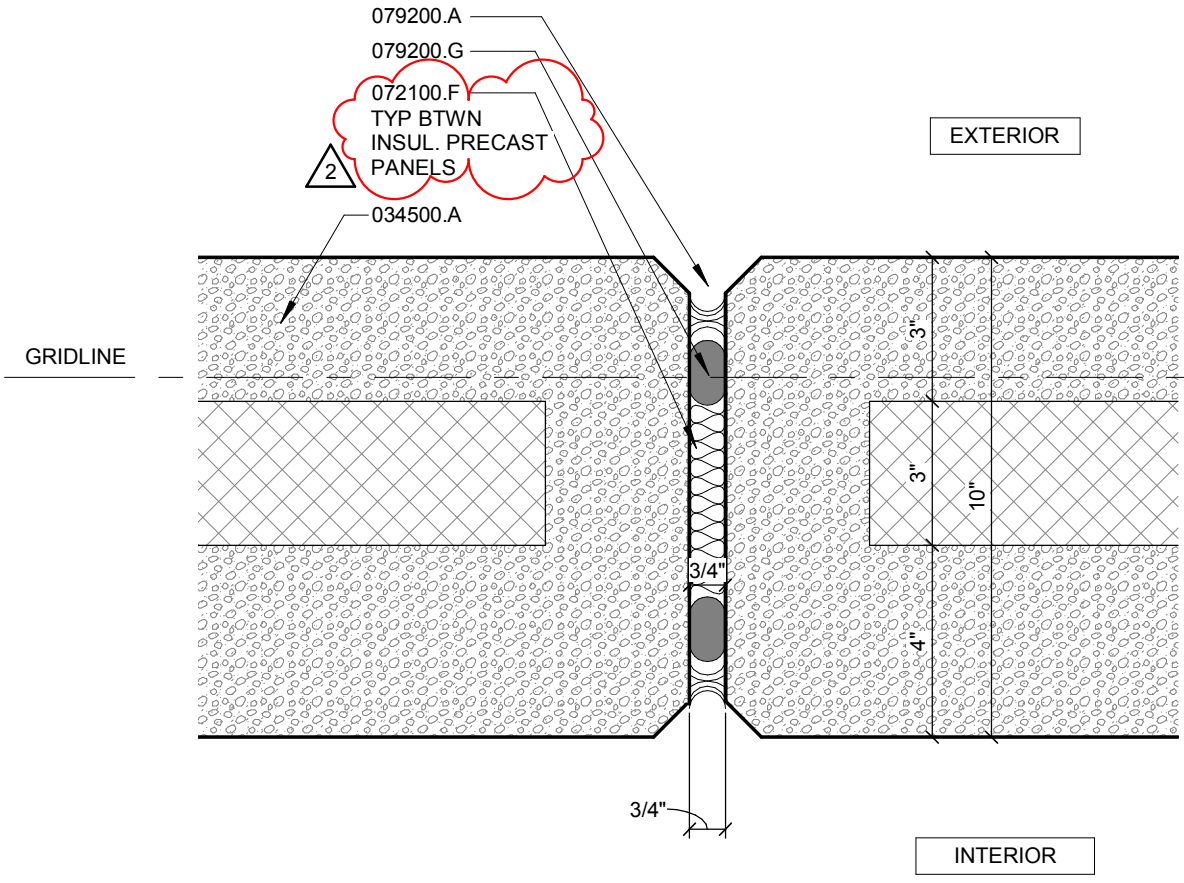
D12

PRECAST PROFILES

CAST PANEL

SCALE: 3" = 1'-0"

WINDOW SILLS, TRANSFORMER ENCLOSURE COPING



AAD-07 ADDENDUM 02 - 09/21/17

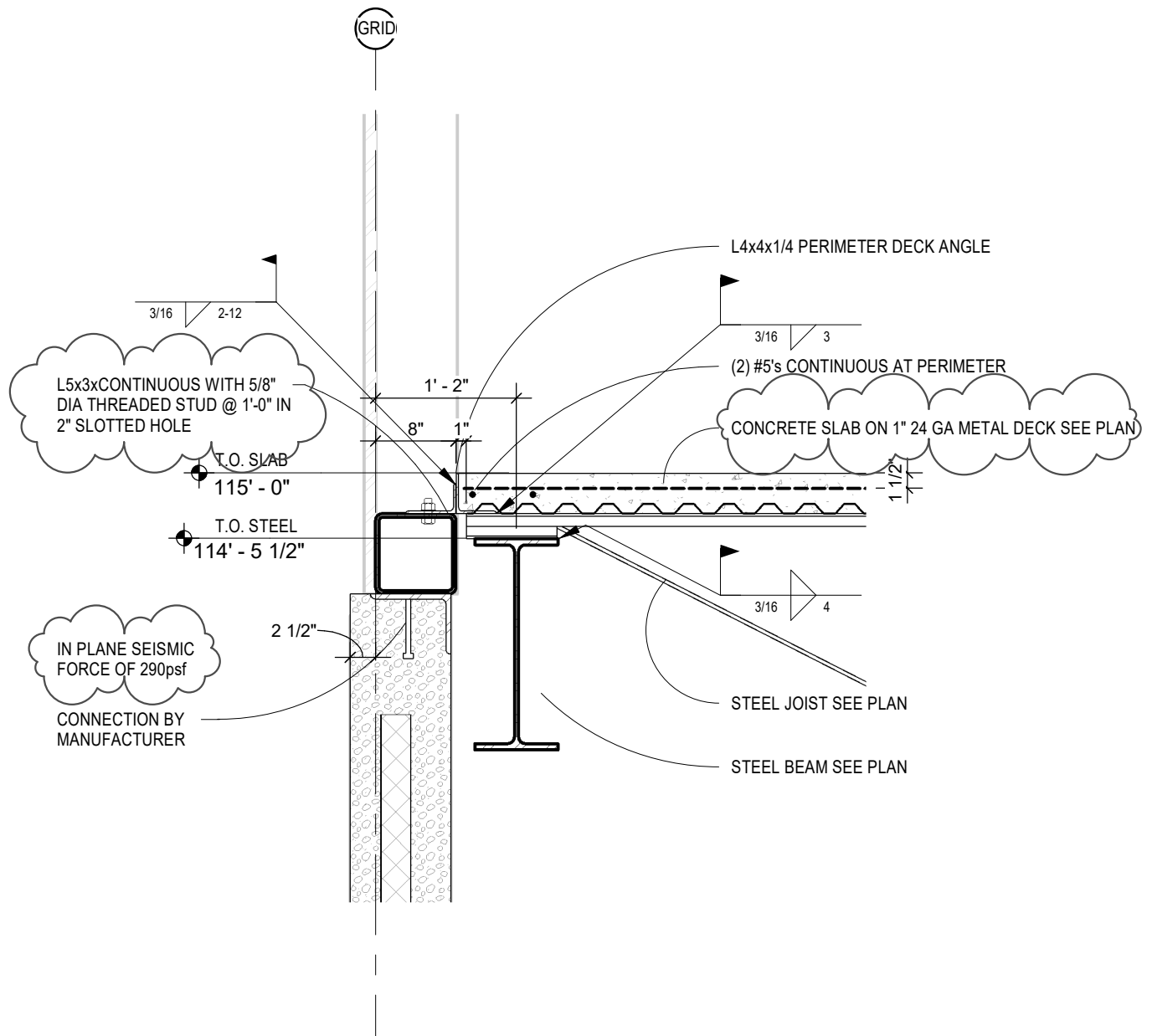
A12

PLAN DETAILS

CAST PANELS

SCALE: 3" = 1'-0"

TYPICAL INSULATED PRECAST PANEL JOINTS



VECTOR
STRUCTURAL DESIGN

**ECHO
ELECTRICAL
SUPPLY**

STEEL JOIST EDGE CONNECTION

Project number 17-076

Date 09/21/2017

Drawn by JLS

Checked by JLS

AD-1

Scale 3/4" = 1'-0"