



10 August 2017

MILITARY DEPARTMENT
STATE of NEBRASKA
LINCOLN, NEBRASKA

**NEBRASKA ARMY NATIONAL GUARD
CHADRON RC LATRINE & KITCHEN REMODEL**

at

**Chadron Readiness Center
485 East 12th Street
Chadron, NE 68337**

PROJECT NO. 31030154

ADDENDUM NO. 2

The original specifications and drawings on the STATE OF NEBRASKA REQUEST for PROPOSAL FORM for the project noted above are amended as noted in this Addendum No. 2.

Receipt of this Addendum shall be acknowledged by inserting its number and date in the space provided on the Bid Form.

ADDENDUM NO. 2

NOTE TO ALL PLANHOLDERS: Please insert this Addendum into your copy of the Contract Documents for the above named project.

The following changes to the Contract Documents are issued by the CFMO-CMB and shall have the same force and affect as though a part of the original issue.

THE RECEIPT DATE, TIME and LOCATION of the BID PROPOSAL submission HAVE NOT CHANGED.

ITEM NO.

- ADD 1-1 Specification Section 09 30 00 - Tiling
Refer to section 2.02, B – Epoxy Adhesive shall be removed and replaced with Ultraflex 2 tile mortar.
- ADD 1-2 Specification Section 09 51 00 – Acoustical Ceilings
Remove this complete section.
- ADD 1-3 Sheet C100 – Utility Plan
1. Although note 20 was shown on this sheet it is incorrect. It shall be the Contractors option to either Trench the Sanitary sewer or Directionally Drill the sanitary sewer. If the Contractor chooses to trench the sewer they shall figure replacement of all concrete and landscaping replacement.
 2. Although the new sanitary sewer is shown on the plans, the tie in location is incorrect. The sanitary sewer shall connect to the existing manhole located approximately 30' East of the shown tie in location.

ADD 1-4 It has been determined in coordination with NPPD that the service transformer location indicated on the plans is incorrect. Refer to the attached sheets being reissued in their entirety for the revised service transformer location. Due to the revised transformer location, the New Service Panel has been relocated. The building distribution and One-Line Schematics are still accurate as originally identified unless specifically noted otherwise. The following sheets are being reissued in their entirety.

1. SHEET E003 – LEVEL 1 – ELECTRICAL DEMOLITION – KITCHEN
2. SHEET E102 – LEVEL 1 – LIGHTING PLAN – KITCHEN
3. SHEET E202 – LEVEL 1 – POWER PLAN – KITCHEN
4. SHEET E302 – ELECTRICAL ONE-LINE DIAGRAM

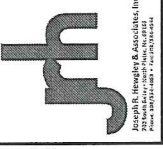
THIS ADDENDUM SHALL BE ATTACHED TO AND MADE A PART OF THE DRAWINGS AND SPECIFICATIONS AND SHALL BE ACKNOWLEDGED WITH THE BIDDER'S PROPOSAL.


DARYL L. BOHAC
MAJOR GENERAL The Adjutant General

End of Addendum No. 1



Attachments:



100% DOCUMENTS



NEBRASKA ARMY NATIONAL GUARD
for
CHADRON READINESS
CENTER

PROJECT #: R-1016
DATE: 05-16-2017
DRAWN: ACR
REVISIONS
BY: JH
REV: 2-Addendum #2

DESIGNED BY: J.H. CAPLIGHTE JOYCE L. WENDEY & ASSOCIATES, P.C. 1400 S. 10TH ST., SUITE 100 LINCOLN, NE 68502 PH: 402.476.1100	APPROVED BY: J.H. CAPLIGHTE JOYCE L. WENDEY & ASSOCIATES, P.C. 1400 S. 10TH ST., SUITE 100 LINCOLN, NE 68502 PH: 402.476.1100	DATE: 05-16-2017	PROJECT #: R-1016
---	---	---------------------	----------------------

- SHEET NOTES:**
1. ALL ELECTRICAL DEMOLITION WORK SHALL BE LEFT TO REMAIN UNLESS OTHERWISE NOTED.
 2. ALL ELECTRICAL DEMOLITION WORK SHALL BE LEFT TO REMAIN UNLESS OTHERWISE NOTED.
 3. ALL ELECTRICAL DEMOLITION WORK SHALL BE LEFT TO REMAIN UNLESS OTHERWISE NOTED.
 4. ALL ELECTRICAL DEMOLITION WORK SHALL BE LEFT TO REMAIN UNLESS OTHERWISE NOTED.

GENERAL NOTES - ELECTRICAL DEMOLITION

ALL ELECTRICAL DEMOLITION WORK SHALL BE LEFT TO REMAIN UNLESS OTHERWISE NOTED.

1. ALL ELECTRICAL DEMOLITION WORK SHALL BE LEFT TO REMAIN UNLESS OTHERWISE NOTED.

2. ALL ELECTRICAL DEMOLITION WORK SHALL BE LEFT TO REMAIN UNLESS OTHERWISE NOTED.

3. ALL ELECTRICAL DEMOLITION WORK SHALL BE LEFT TO REMAIN UNLESS OTHERWISE NOTED.

4. ALL ELECTRICAL DEMOLITION WORK SHALL BE LEFT TO REMAIN UNLESS OTHERWISE NOTED.

5. ALL ELECTRICAL DEMOLITION WORK SHALL BE LEFT TO REMAIN UNLESS OTHERWISE NOTED.

6. ALL ELECTRICAL DEMOLITION WORK SHALL BE LEFT TO REMAIN UNLESS OTHERWISE NOTED.

7. ALL ELECTRICAL DEMOLITION WORK SHALL BE LEFT TO REMAIN UNLESS OTHERWISE NOTED.

8. ALL ELECTRICAL DEMOLITION WORK SHALL BE LEFT TO REMAIN UNLESS OTHERWISE NOTED.

9. ALL ELECTRICAL DEMOLITION WORK SHALL BE LEFT TO REMAIN UNLESS OTHERWISE NOTED.

10. ALL ELECTRICAL DEMOLITION WORK SHALL BE LEFT TO REMAIN UNLESS OTHERWISE NOTED.

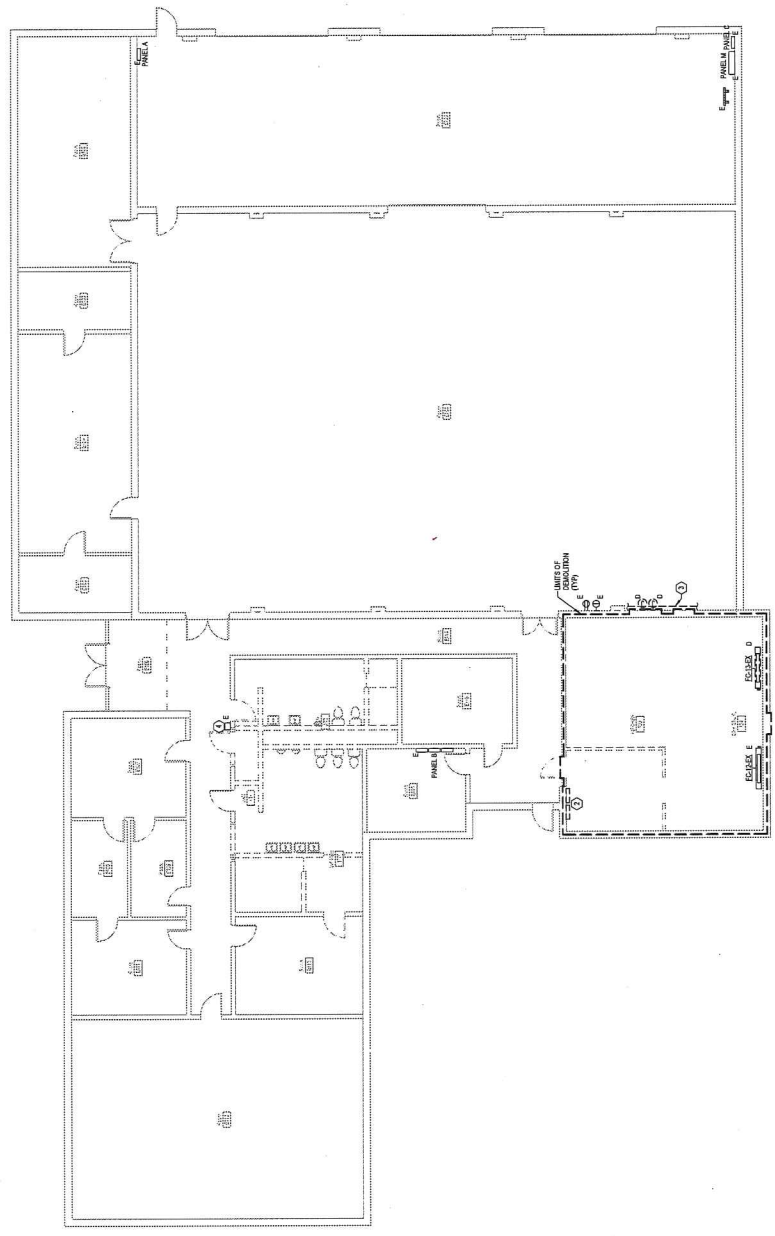


THIS SHEET SHALL APPLY TO THE KITCHEN PACKAGE.

THIS SHEET SHALL APPLY TO THE KITCHEN PACKAGE.

THIS SHEET SHALL APPLY TO THE KITCHEN PACKAGE.

THIS SHEET SHALL APPLY TO THE KITCHEN PACKAGE.



1 LEVEL 1 - ELECTRICAL DEMOLITION - KITCHEN
1/8" = 1'-0"

PROJECT #:
R-1016

DATE:
05-16-2017

DRAWN:
ACR

REVISIONS

BY:
JH

REV:
2-Addendum #2

DESIGNED BY:
J.H. CAPLIGHTE
JOYCE L. WENDEY &
ASSOCIATES, P.C.
1400 S. 10TH ST., SUITE 100
LINCOLN, NE 68502
PH: 402.476.1100

APPROVED BY:
J.H. CAPLIGHTE
JOYCE L. WENDEY &
ASSOCIATES, P.C.
1400 S. 10TH ST., SUITE 100
LINCOLN, NE 68502
PH: 402.476.1100

DATE:
05-16-2017

PROJECT #:
R-1016

DATE:
05-16-2017

DRAWN:
ACR

REVISIONS

BY:
JH

REV:
2-Addendum #2

DESIGNED BY:
J.H. CAPLIGHTE
JOYCE L. WENDEY &
ASSOCIATES, P.C.
1400 S. 10TH ST., SUITE 100
LINCOLN, NE 68502
PH: 402.476.1100

APPROVED BY:
J.H. CAPLIGHTE
JOYCE L. WENDEY &
ASSOCIATES, P.C.
1400 S. 10TH ST., SUITE 100
LINCOLN, NE 68502
PH: 402.476.1100

DATE:
05-16-2017

PROJECT #:
R-1016

DATE:
05-16-2017

DRAWN:
ACR

REVISIONS

BY:
JH

REV:
2-Addendum #2

DESIGNED BY:
J.H. CAPLIGHTE
JOYCE L. WENDEY &
ASSOCIATES, P.C.
1400 S. 10TH ST., SUITE 100
LINCOLN, NE 68502
PH: 402.476.1100

APPROVED BY:
J.H. CAPLIGHTE
JOYCE L. WENDEY &
ASSOCIATES, P.C.
1400 S. 10TH ST., SUITE 100
LINCOLN, NE 68502
PH: 402.476.1100

DATE:
05-16-2017

PROJECT #:
R-1016

DATE:
05-16-2017

DRAWN:
ACR

REVISIONS

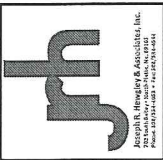
BY:
JH

REV:
2-Addendum #2

DESIGNED BY:
J.H. CAPLIGHTE
JOYCE L. WENDEY &
ASSOCIATES, P.C.
1400 S. 10TH ST., SUITE 100
LINCOLN, NE 68502
PH: 402.476.1100

APPROVED BY:
J.H. CAPLIGHTE
JOYCE L. WENDEY &
ASSOCIATES, P.C.
1400 S. 10TH ST., SUITE 100
LINCOLN, NE 68502
PH: 402.476.1100

DATE:
05-16-2017



100%
DOCUMENTS



CHADRON READINESS
CENTER
for
NEBRASKA ARMY NATIONAL GUARD

PROJECT #: R-1016
DATE: 05-16-2017
DRAWN: ACR
REVISIONS

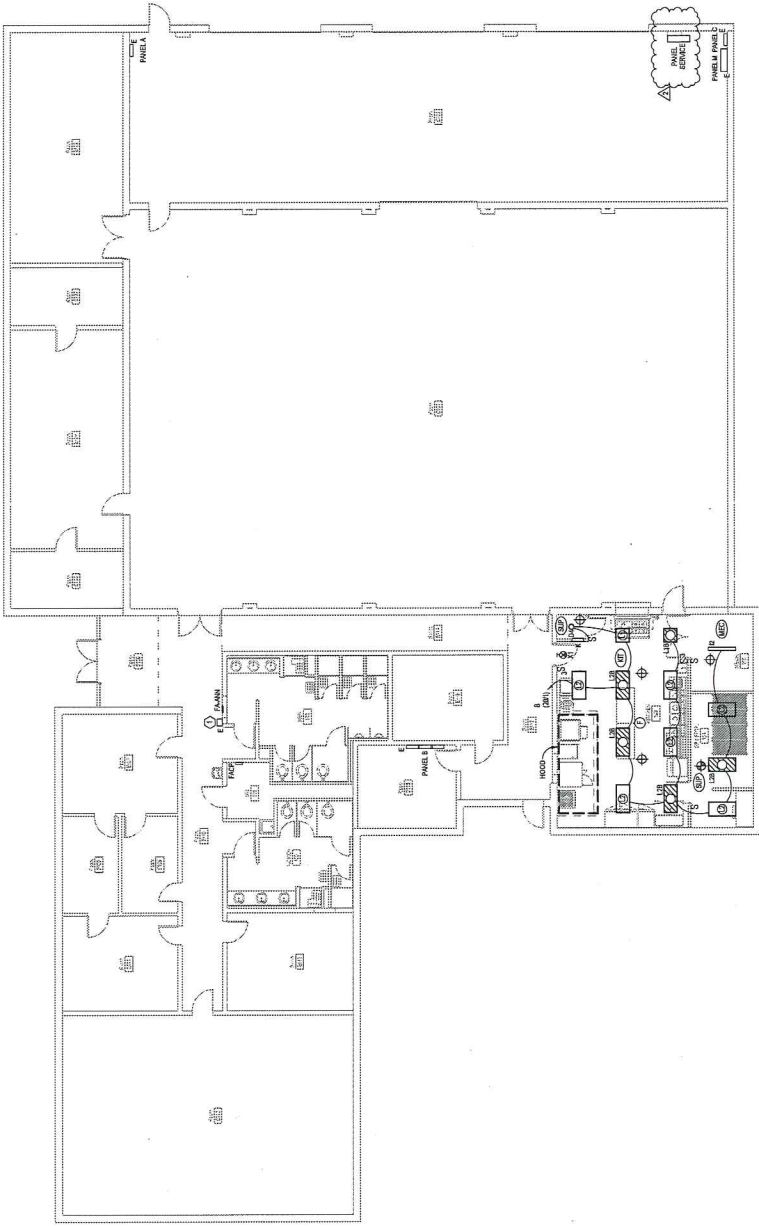
1. J.T.
1. 1'-0" = 1'-0"
1. Rev 2 - Addendum #2

3011 CHADRON
JOYCE BLVD
OMAHA, NEBRASKA
68131
JAW
JAW
JAW

SHEET E102

SHEET NOTES:
① VISITING OFFICER BUILDING MAIN FLOOR ALARM CONTROL PANEL.

- GENERAL NOTES - LIGHTING**
- ALL LIGHTING CONTROL DEVICES ARE TO BE INSTALLED WITHOUT CONNECTION TO OTHER SYSTEMS UNLESS OTHERWISE NOTED. LIGHTING CONTROL DEVICES ARE TO BE INSTALLED IN THE SAME AREA WHERE LIGHT FIXTURES ARE TO BE INSTALLED. LIGHTING CONTROL DEVICES SHALL BE INSTALLED IN THE SAME AREA WHERE LIGHT FIXTURES ARE TO BE INSTALLED. LIGHTING CONTROL DEVICES SHALL BE INSTALLED IN THE SAME AREA WHERE LIGHT FIXTURES ARE TO BE INSTALLED.
 - BRANCH CIRCUITS SHALL BE INSTALLED WITH A MINIMUM OF 18 AWG COPPER WIRE. BRANCH CIRCUITS SHALL BE INSTALLED WITH A MINIMUM OF 18 AWG COPPER WIRE. BRANCH CIRCUITS SHALL BE INSTALLED WITH A MINIMUM OF 18 AWG COPPER WIRE.
 - ALL LIGHTING CONTROL DEVICES SHALL BE INSTALLED IN THE SAME AREA WHERE LIGHT FIXTURES ARE TO BE INSTALLED. LIGHTING CONTROL DEVICES SHALL BE INSTALLED IN THE SAME AREA WHERE LIGHT FIXTURES ARE TO BE INSTALLED. LIGHTING CONTROL DEVICES SHALL BE INSTALLED IN THE SAME AREA WHERE LIGHT FIXTURES ARE TO BE INSTALLED.
 - ALL LIGHTING CONTROL DEVICES SHALL BE INSTALLED IN THE SAME AREA WHERE LIGHT FIXTURES ARE TO BE INSTALLED. LIGHTING CONTROL DEVICES SHALL BE INSTALLED IN THE SAME AREA WHERE LIGHT FIXTURES ARE TO BE INSTALLED. LIGHTING CONTROL DEVICES SHALL BE INSTALLED IN THE SAME AREA WHERE LIGHT FIXTURES ARE TO BE INSTALLED.
 - ALL LIGHTING CONTROL DEVICES SHALL BE INSTALLED IN THE SAME AREA WHERE LIGHT FIXTURES ARE TO BE INSTALLED. LIGHTING CONTROL DEVICES SHALL BE INSTALLED IN THE SAME AREA WHERE LIGHT FIXTURES ARE TO BE INSTALLED. LIGHTING CONTROL DEVICES SHALL BE INSTALLED IN THE SAME AREA WHERE LIGHT FIXTURES ARE TO BE INSTALLED.
 - ALL LIGHTING CONTROL DEVICES SHALL BE INSTALLED IN THE SAME AREA WHERE LIGHT FIXTURES ARE TO BE INSTALLED. LIGHTING CONTROL DEVICES SHALL BE INSTALLED IN THE SAME AREA WHERE LIGHT FIXTURES ARE TO BE INSTALLED. LIGHTING CONTROL DEVICES SHALL BE INSTALLED IN THE SAME AREA WHERE LIGHT FIXTURES ARE TO BE INSTALLED.
 - ALL LIGHTING CONTROL DEVICES SHALL BE INSTALLED IN THE SAME AREA WHERE LIGHT FIXTURES ARE TO BE INSTALLED. LIGHTING CONTROL DEVICES SHALL BE INSTALLED IN THE SAME AREA WHERE LIGHT FIXTURES ARE TO BE INSTALLED. LIGHTING CONTROL DEVICES SHALL BE INSTALLED IN THE SAME AREA WHERE LIGHT FIXTURES ARE TO BE INSTALLED.
 - ALL LIGHTING CONTROL DEVICES SHALL BE INSTALLED IN THE SAME AREA WHERE LIGHT FIXTURES ARE TO BE INSTALLED. LIGHTING CONTROL DEVICES SHALL BE INSTALLED IN THE SAME AREA WHERE LIGHT FIXTURES ARE TO BE INSTALLED. LIGHTING CONTROL DEVICES SHALL BE INSTALLED IN THE SAME AREA WHERE LIGHT FIXTURES ARE TO BE INSTALLED.
 - ALL LIGHTING CONTROL DEVICES SHALL BE INSTALLED IN THE SAME AREA WHERE LIGHT FIXTURES ARE TO BE INSTALLED. LIGHTING CONTROL DEVICES SHALL BE INSTALLED IN THE SAME AREA WHERE LIGHT FIXTURES ARE TO BE INSTALLED. LIGHTING CONTROL DEVICES SHALL BE INSTALLED IN THE SAME AREA WHERE LIGHT FIXTURES ARE TO BE INSTALLED.
 - ALL LIGHTING CONTROL DEVICES SHALL BE INSTALLED IN THE SAME AREA WHERE LIGHT FIXTURES ARE TO BE INSTALLED. LIGHTING CONTROL DEVICES SHALL BE INSTALLED IN THE SAME AREA WHERE LIGHT FIXTURES ARE TO BE INSTALLED. LIGHTING CONTROL DEVICES SHALL BE INSTALLED IN THE SAME AREA WHERE LIGHT FIXTURES ARE TO BE INSTALLED.



THIS SHEET SHALL APPLY TO THE
KITCHEN PACKAGE.

INSTALL OWNER PROVIDED LIGHTING RECEPTACLE AND EQUIPMENT IN THE FOLLOWING AREAS:
NEUTRAL CONDUCTOR FOR ALL SINGLE PHASE LOADS
SINGLE POLE CIRCUIT BREAKER

PERMISSION TO REPRODUCE ANY PART OF THIS DOCUMENT IN ANY FORM OR BY ANY MEANS IS GRANTED BY THE AUTHOR, PROVIDED THAT THE ORIGINAL SOURCE IS PROPERLY CITED. ENGINEERING SOLUTIONS INC. IS NOT RESPONSIBLE FOR ANY ERRORS OR OMISSIONS. ALL DIMENSIONS SHALL BE TO FACE UNLESS OTHERWISE NOTED. CONSULT THE ARCHITECT FOR ANY CHANGES TO THIS PLAN. COORDINATE WITH ALL OTHER TRADES PRIOR TO INSTALLATION. SEE SPECIFICATIONS.

DESIGNED BY: JAW
CHECKED BY: JAW
DATE: 05-16-2017

① LEVEL 1 - LIGHTING PLAN - KITCHEN
1/8" = 1'-0"

ENGINEERING SOLUTIONS
3011 CHADRON BLVD
OMAHA, NEBRASKA 68131
PHONE: 402.476.4444
WWW.ESOLUTIONS.COM



100% DOCUMENTS



NEBRASKA ARMY NATIONAL GUARD
For
CADRON READINESS CENTER

PROJECT #: R-1016
DATE: 08-16-2017
DRAWN: ACR
REVISIONS

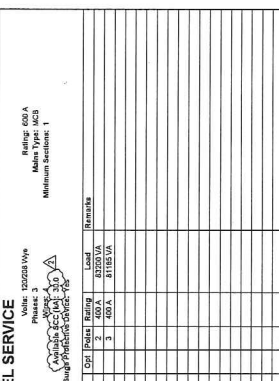
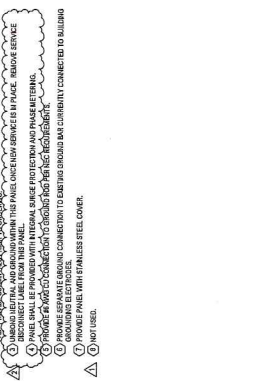
1. IT
2. IT
3. IT
4. IT
5. IT
6. IT
7. IT
8. IT
9. IT
10. IT
11. IT
12. IT
13. IT
14. IT
15. IT
16. IT
17. IT
18. IT
19. IT
20. IT
21. IT
22. IT
23. IT
24. IT
25. IT
26. IT
27. IT
28. IT
29. IT
30. IT
31. IT
32. IT
33. IT
34. IT
35. IT
36. IT
37. IT
38. IT
39. IT
40. IT
41. IT
42. IT
43. IT
44. IT
45. IT
46. IT
47. IT
48. IT
49. IT
50. IT
51. IT
52. IT
53. IT
54. IT
55. IT
56. IT
57. IT
58. IT
59. IT
60. IT
61. IT
62. IT
63. IT
64. IT
65. IT
66. IT
67. IT
68. IT
69. IT
70. IT
71. IT
72. IT
73. IT
74. IT
75. IT
76. IT
77. IT
78. IT
79. IT
80. IT
81. IT
82. IT
83. IT
84. IT
85. IT
86. IT
87. IT
88. IT
89. IT
90. IT
91. IT
92. IT
93. IT
94. IT
95. IT
96. IT
97. IT
98. IT
99. IT
100. IT

GENERAL NOTES:

1. ALL WORK TO BE DONE IN ACCORDANCE WITH THE LATEST EDITIONS OF THE NATIONAL ELECTRICAL CODE (NEC) AND THE NATIONAL FIRE ALARM AND SIGNAL CODE (NFPA 72).
2. ALL WORK SHALL BE DONE IN ACCORDANCE WITH THE LATEST EDITIONS OF THE NATIONAL ELECTRICAL CODE (NEC) AND THE NATIONAL FIRE ALARM AND SIGNAL CODE (NFPA 72).
3. ALL WORK SHALL BE DONE IN ACCORDANCE WITH THE LATEST EDITIONS OF THE NATIONAL ELECTRICAL CODE (NEC) AND THE NATIONAL FIRE ALARM AND SIGNAL CODE (NFPA 72).
4. ALL WORK SHALL BE DONE IN ACCORDANCE WITH THE LATEST EDITIONS OF THE NATIONAL ELECTRICAL CODE (NEC) AND THE NATIONAL FIRE ALARM AND SIGNAL CODE (NFPA 72).
5. ALL WORK SHALL BE DONE IN ACCORDANCE WITH THE LATEST EDITIONS OF THE NATIONAL ELECTRICAL CODE (NEC) AND THE NATIONAL FIRE ALARM AND SIGNAL CODE (NFPA 72).
6. ALL WORK SHALL BE DONE IN ACCORDANCE WITH THE LATEST EDITIONS OF THE NATIONAL ELECTRICAL CODE (NEC) AND THE NATIONAL FIRE ALARM AND SIGNAL CODE (NFPA 72).
7. ALL WORK SHALL BE DONE IN ACCORDANCE WITH THE LATEST EDITIONS OF THE NATIONAL ELECTRICAL CODE (NEC) AND THE NATIONAL FIRE ALARM AND SIGNAL CODE (NFPA 72).
8. ALL WORK SHALL BE DONE IN ACCORDANCE WITH THE LATEST EDITIONS OF THE NATIONAL ELECTRICAL CODE (NEC) AND THE NATIONAL FIRE ALARM AND SIGNAL CODE (NFPA 72).
9. ALL WORK SHALL BE DONE IN ACCORDANCE WITH THE LATEST EDITIONS OF THE NATIONAL ELECTRICAL CODE (NEC) AND THE NATIONAL FIRE ALARM AND SIGNAL CODE (NFPA 72).
10. ALL WORK SHALL BE DONE IN ACCORDANCE WITH THE LATEST EDITIONS OF THE NATIONAL ELECTRICAL CODE (NEC) AND THE NATIONAL FIRE ALARM AND SIGNAL CODE (NFPA 72).

SHEET NOTES:

1. PROVIDE SEPARATE GROUND CONNECTION TO EXISTING THROUGH BAR CURRENTLY CONNECTED TO BUILDING GROUNDING ELECTRODE.
2. PROVIDE SEPARATE GROUND CONNECTION TO EXISTING THROUGH BAR CURRENTLY CONNECTED TO BUILDING GROUNDING ELECTRODE.
3. PROVIDE SEPARATE GROUND CONNECTION TO EXISTING THROUGH BAR CURRENTLY CONNECTED TO BUILDING GROUNDING ELECTRODE.
4. PROVIDE SEPARATE GROUND CONNECTION TO EXISTING THROUGH BAR CURRENTLY CONNECTED TO BUILDING GROUNDING ELECTRODE.
5. PROVIDE SEPARATE GROUND CONNECTION TO EXISTING THROUGH BAR CURRENTLY CONNECTED TO BUILDING GROUNDING ELECTRODE.
6. PROVIDE SEPARATE GROUND CONNECTION TO EXISTING THROUGH BAR CURRENTLY CONNECTED TO BUILDING GROUNDING ELECTRODE.
7. PROVIDE SEPARATE GROUND CONNECTION TO EXISTING THROUGH BAR CURRENTLY CONNECTED TO BUILDING GROUNDING ELECTRODE.
8. PROVIDE SEPARATE GROUND CONNECTION TO EXISTING THROUGH BAR CURRENTLY CONNECTED TO BUILDING GROUNDING ELECTRODE.
9. PROVIDE SEPARATE GROUND CONNECTION TO EXISTING THROUGH BAR CURRENTLY CONNECTED TO BUILDING GROUNDING ELECTRODE.
10. PROVIDE SEPARATE GROUND CONNECTION TO EXISTING THROUGH BAR CURRENTLY CONNECTED TO BUILDING GROUNDING ELECTRODE.



Distribution Panel: PANEL SERVICE

Location: EXTENDING
Supply: EXTENDING
Branch: NORMAL
Service Rated: Yes

CH	Circuit Description	Qty	Panel Rating	Load	Remarks
1	PANEL X	3	400 A	81155 VA	
2	PANEL Y	3	400 A	81155 VA	
3	PANEL Z	3	400 A	81155 VA	
4					
5					
6					
7					
8					
9					
10					
11					
12					
13					
14					
15					
16					
17					
18					
19					
20					

THIS SHEET SHALL APPLY TO THE KITCHEN PACKAGE

PERMISSION TO REPRODUCE ANY PART OF THIS DOCUMENT IS HEREBY GRANTED BY THE ENGINEERING PROFESSIONAL SOCIETY OF NEBRASKA, INC. FOR THE PROJECT OF THE ARCHITECTS OF THE PROJECT. UNAUTHORIZED USE OF THIS DOCUMENT FOR ANY OTHER PROJECT IS PROHIBITED BY CONTRACT AND LAW.

DO NOT SCALE DRAWINGS. ALL DIMENSIONS AND CLEARANCES SHALL BE COORDINATED PRIOR TO INSTALLATION. SEE SPECIFICATIONS.

DESIGNED BY: J. R. HENSLY
CHECKED BY: J. R. HENSLY
DATE: 08-16-2017

PROJECT # R-1016
DATE: 08-16-2017
DRAWN: ACR

FEEDER SCHEME

MARK	NOMINAL SIZE	USE AND CONDUIT
1A	240	240 RALUM, 6 ESD-24C2
1B	180	180 RALUM, 6 ESD-18C2
1C	120	120 RALUM, 6 ESD-12C2
1D	90	90 RALUM, 6 ESD-9C2
1E	72	72 RALUM, 6 ESD-72C2
1F	60	60 RALUM, 6 ESD-60C2
1G	48	48 RALUM, 6 ESD-48C2
1H	36	36 RALUM, 6 ESD-36C2
1I	30	30 RALUM, 6 ESD-30C2
1J	24	24 RALUM, 6 ESD-24C2
1K	18	18 RALUM, 6 ESD-18C2
1L	12	12 RALUM, 6 ESD-12C2
1M	9	9 RALUM, 6 ESD-9C2
1N	6	6 RALUM, 6 ESD-60C2
1O	4	4 RALUM, 6 ESD-48C2
1P	3	3 RALUM, 6 ESD-36C2
1Q	2	2 RALUM, 6 ESD-30C2
1R	1	1 RALUM, 6 ESD-24C2
1S	1	1 RALUM, 6 ESD-18C2
1T	1	1 RALUM, 6 ESD-12C2
1U	1	1 RALUM, 6 ESD-9C2
1V	1	1 RALUM, 6 ESD-60C2
1W	1	1 RALUM, 6 ESD-48C2
1X	1	1 RALUM, 6 ESD-36C2
1Y	1	1 RALUM, 6 ESD-30C2
1Z	1	1 RALUM, 6 ESD-24C2
1AA	1	1 RALUM, 6 ESD-18C2
1AB	1	1 RALUM, 6 ESD-12C2
1AC	1	1 RALUM, 6 ESD-9C2
1AD	1	1 RALUM, 6 ESD-60C2
1AE	1	1 RALUM, 6 ESD-48C2
1AF	1	1 RALUM, 6 ESD-36C2
1AG	1	1 RALUM, 6 ESD-30C2
1AH	1	1 RALUM, 6 ESD-24C2
1AI	1	1 RALUM, 6 ESD-18C2
1AJ	1	1 RALUM, 6 ESD-12C2
1AK	1	1 RALUM, 6 ESD-9C2
1AL	1	1 RALUM, 6 ESD-60C2
1AM	1	1 RALUM, 6 ESD-48C2
1AN	1	1 RALUM, 6 ESD-36C2
1AO	1	1 RALUM, 6 ESD-30C2
1AP	1	1 RALUM, 6 ESD-24C2
1AQ	1	1 RALUM, 6 ESD-18C2
1AR	1	1 RALUM, 6 ESD-12C2
1AS	1	1 RALUM, 6 ESD-9C2
1AT	1	1 RALUM, 6 ESD-60C2
1AU	1	1 RALUM, 6 ESD-48C2
1AV	1	1 RALUM, 6 ESD-36C2
1AW	1	1 RALUM, 6 ESD-30C2
1AX	1	1 RALUM, 6 ESD-24C2
1AY	1	1 RALUM, 6 ESD-18C2
1AZ	1	1 RALUM, 6 ESD-12C2
1BA	1	1 RALUM, 6 ESD-9C2
1BB	1	1 RALUM, 6 ESD-60C2
1BC	1	1 RALUM, 6 ESD-48C2
1BD	1	1 RALUM, 6 ESD-36C2
1BE	1	1 RALUM, 6 ESD-30C2
1BF	1	1 RALUM, 6 ESD-24C2
1BG	1	1 RALUM, 6 ESD-18C2
1BH	1	1 RALUM, 6 ESD-12C2
1BI	1	1 RALUM, 6 ESD-9C2
1BJ	1	1 RALUM, 6 ESD-60C2
1BK	1	1 RALUM, 6 ESD-48C2
1BL	1	1 RALUM, 6 ESD-36C2
1BM	1	1 RALUM, 6 ESD-30C2
1BN	1	1 RALUM, 6 ESD-24C2
1BO	1	1 RALUM, 6 ESD-18C2
1BP	1	1 RALUM, 6 ESD-12C2
1BQ	1	1 RALUM, 6 ESD-9C2
1BR	1	1 RALUM, 6 ESD-60C2
1BS	1	1 RALUM, 6 ESD-48C2
1BT	1	1 RALUM, 6 ESD-36C2
1BU	1	1 RALUM, 6 ESD-30C2
1BV	1	1 RALUM, 6 ESD-24C2
1BW	1	1 RALUM, 6 ESD-18C2
1BX	1	1 RALUM, 6 ESD-12C2
1BY	1	1 RALUM, 6 ESD-9C2
1BZ	1	1 RALUM, 6 ESD-60C2
1CA	1	1 RALUM, 6 ESD-48C2
1CB	1	1 RALUM, 6 ESD-36C2
1CC	1	1 RALUM, 6 ESD-30C2
1CD	1	1 RALUM, 6 ESD-24C2
1CE	1	1 RALUM, 6 ESD-18C2
1CF	1	1 RALUM, 6 ESD-12C2
1CG	1	1 RALUM, 6 ESD-9C2
1CH	1	1 RALUM, 6 ESD-60C2
1CI	1	1 RALUM, 6 ESD-48C2
1CJ	1	1 RALUM, 6 ESD-36C2
1CK	1	1 RALUM, 6 ESD-30C2
1CL	1	1 RALUM, 6 ESD-24C2
1CM	1	1 RALUM, 6 ESD-18C2
1CN	1	1 RALUM, 6 ESD-12C2
1CO	1	1 RALUM, 6 ESD-9C2
1CP	1	1 RALUM, 6 ESD-60C2
1CQ	1	1 RALUM, 6 ESD-48C2
1CR	1	1 RALUM, 6 ESD-36C2
1CS	1	1 RALUM, 6 ESD-30C2
1CT	1	1 RALUM, 6 ESD-24C2
1CU	1	1 RALUM, 6 ESD-18C2
1CV	1	1 RALUM, 6 ESD-12C2
1CW	1	1 RALUM, 6 ESD-9C2
1CX	1	1 RALUM, 6 ESD-60C2
1CY	1	1 RALUM, 6 ESD-48C2
1CZ	1	1 RALUM, 6 ESD-36C2
1DA	1	1 RALUM, 6 ESD-30C2
1DB	1	1 RALUM, 6 ESD-24C2
1DC	1	1 RALUM, 6 ESD-18C2
1DD	1	1 RALUM, 6 ESD-12C2
1DE	1	1 RALUM, 6 ESD-9C2
1DF	1	1 RALUM, 6 ESD-60C2
1DG	1	1 RALUM, 6 ESD-48C2
1DH	1	1 RALUM, 6 ESD-36C2
1DI	1	1 RALUM, 6 ESD-30C2
1DJ	1	1 RALUM, 6 ESD-24C2
1DK	1	1 RALUM, 6 ESD-18C2
1DL	1	1 RALUM, 6 ESD-12C2
1DM	1	1 RALUM, 6 ESD-9C2
1DN	1	1 RALUM, 6 ESD-60C2
1DO	1	1 RALUM, 6 ESD-48C2
1DP	1	1 RALUM, 6 ESD-36C2
1DQ	1	1 RALUM, 6 ESD-30C2
1DR	1	1 RALUM, 6 ESD-24C2
1DS	1	1 RALUM, 6 ESD-18C2
1DT	1	1 RALUM, 6 ESD-12C2
1DU	1	1 RALUM, 6 ESD-9C2
1DV	1	1 RALUM, 6 ESD-60C2
1DV	1	1 RALUM, 6 ESD-48C2
1DV	1	1 RALUM, 6 ESD-36C2
1DV	1	1 RALUM, 6 ESD-30C2
1DV	1	1 RALUM, 6 ESD-24C2
1DV	1	1 RALUM, 6 ESD-18C2
1DV	1	1 RALUM, 6 ESD-12C2
1DV	1	1 RALUM, 6 ESD-9C2
1DV	1	1 RALUM, 6 ESD-60C2
1DV	1	1 RALUM, 6 ESD-48C2
1DV	1	1 RALUM, 6 ESD-36C2
1DV	1	1 RALUM, 6 ESD-30C2
1DV	1	1 RALUM, 6 ESD-24C2
1DV	1	1 RALUM, 6 ESD-18C2
1DV	1	1 RALUM, 6 ESD-12C2
1DV	1	1 RALUM, 6 ESD-9C2
1DV	1	1 RALUM, 6 ESD-60C2
1DV	1	1 RALUM, 6 ESD-48C2
1DV	1	1 RALUM, 6 ESD-36C2
1DV	1	1 RALUM, 6 ESD-30C2
1DV	1	1 RALUM, 6 ESD-24C2
1DV	1	1 RALUM, 6 ESD-18C2
1DV	1	1 RALUM, 6 ESD-12C2
1DV	1	1 RALUM, 6 ESD-9C2
1DV	1	1 RALUM, 6 ESD-60C2
1DV	1	1 RALUM, 6 ESD-48C2
1DV	1	1 RALUM, 6 ESD-36C2
1DV	1	1 RALUM, 6 ESD-30C2
1DV	1	1 RALUM, 6 ESD-24C2
1DV	1	1 RALUM, 6 ESD-18C2
1DV	1	1 RALUM, 6 ESD-12C2
1DV	1	1 RALUM, 6 ESD-9C2
1DV	1	1 RALUM, 6 ESD-60C2
1DV	1	1 RALUM, 6 ESD-48C2
1DV	1	1 RALUM, 6 ESD-36C2
1DV	1	1 RALUM, 6 ESD-30C2
1DV	1	1 RALUM, 6 ESD-24C2
1DV	1	1 RALUM, 6 ESD-18C2
1DV	1	1 RALUM, 6 ESD-12C2
1DV	1	1 RALUM, 6 ESD-9C2
1DV	1	1 RALUM, 6 ESD-60C2
1DV	1	1 RALUM, 6 ESD-48C2
1DV	1	1 RALUM, 6 ESD-36C2
1DV	1	1 RALUM, 6 ESD-30C2
1DV	1	1 RALUM, 6 ESD-24C2
1DV	1	1 RALUM, 6 ESD-18C2
1DV	1	1 RALUM, 6 ESD-12C2
1DV	1	1 RALUM, 6 ESD-9C2
1DV	1	1 RALUM, 6 ESD-60C2
1DV	1	1 RALUM, 6 ESD-48C2
1DV	1	1 RALUM, 6 ESD-36C2
1DV	1	1 RALUM, 6 ESD-30C2
1DV	1	1 RALUM, 6 ESD-24C2
1DV	1	1 RALUM, 6 ESD-18C2
1DV	1	1 RALUM, 6 ESD-12C2
1DV	1	1 RALUM, 6 ESD-9C2
1DV	1	1 RALUM, 6 ESD-60C2
1DV	1	1 RALUM, 6 ESD-48C2
1DV	1	1 RALUM, 6 ESD-36C2
1DV	1	1 RALUM, 6 ESD-30C2
1DV	1	1 RALUM, 6 ESD-24C2
1DV	1	1 RALUM, 6 ESD-18C2
1DV	1	1 RALUM, 6 ESD-12C2
1DV	1	1 RALUM, 6 ESD-9C2
1DV	1	1 RALUM, 6 ESD-60C2
1DV	1	1 RALUM, 6 ESD-48C2
1DV	1	1 RALUM, 6 ESD-36C2
1DV	1	1 RALUM, 6 ESD-30C2
1DV	1	1 RALUM, 6 ESD-24C2
1DV	1	1 RALUM, 6 ESD-18C2
1DV	1	1 RALUM, 6 ESD-12C2
1DV	1	1 RALUM, 6 ESD-9C2
1DV	1	1 RALUM, 6 ESD-60C2
1DV	1	1 RALUM, 6 ESD-48C2
1DV	1	1 RALUM, 6 ESD-36C2
1DV	1	1 RALUM, 6 ESD-30C2
1DV	1	1 RALUM, 6 ESD-24C2
1DV	1	1 RALUM, 6 ESD-18C2
1DV	1	1 RALUM, 6 ESD-12C2
1DV	1	1 RALUM, 6 ESD-9C2
1DV	1	1 RALUM, 6 ESD-60C2
1DV	1	1 RALUM, 6 ESD-48C2
1DV	1	1 RALUM, 6 ESD-36C2
1DV	1	1 RALUM, 6 ESD-30C2
1DV	1	1 RALUM, 6 ESD-24C2
1DV	1	1 RALUM, 6 ESD-18C2
1DV	1	1 RALUM, 6 ESD-12C2
1DV	1	1 RALUM, 6 ESD-9C2
1DV	1	1 RALUM, 6 ESD-60C2
1DV	1	1 RALUM, 6 ESD-