

**Bid Date:** January 17, 2017

*This addendum is hereby made a part of the contract documents to the same extent as though it were originally included therein. Specifications and drawings shall be considered modified or revised as hereinafter described. Revisions to the drawings are referenced by the drawing number.*

## Clarification Items

1CL1. Question: You mentioned that only certain card readers need to be replaced and they are noted on the plans. I have been over the plans and cannot locate any distinguisher of which doors need new card readers?

1. Clarification: On Drawing 000.C04, any door with remark "6" indicates there is an existing RP40 card reader and, therefore, would not need a new one. For these Group B schools, there are no doors that have the existing RP40 card readers, so all doors for Group B require new card readers.

1CL2. Question: Are all the key switches existing?

1. Clarification: All key switches on the drawings are existing. No key switches are being added for this project.

1CL3. Question: In Section 28 13 00, Paragraph 2.3G you reference all electrified mortise lock, exit device and wire transfer hinge are provided with door hardware. Are these components existing, or will they be added to this project? Are the maglocks and door strikes provided as well?

1. Clarification: All exit devices, wire transfer hinges, maglocks, door strikes, locks, and door position switches are existing and will be reused.

1CL4. Question: Are all lock power supplies are existing and will be reused?

1. Clarification: Yes. All power supplies are existing and will be reused.

## Changes to the Project Manual

### General Specification Items:

1GS1. See attached Pre-Bid Attendance Roster.

1GS2. See attached Pre-Bid Meeting Minutes.

1GS3. Section 00 11 13 - Advertisement for Bids

1. Page 00 11 13 – 1, last sentence of last paragraph: Delete “Available schools and times will be provided at the pre-bid meeting” and substitute with “LPS and IP Design Group will conduct site visits on Friday, January 6, 2017. Site visits will begin at 3:15 PM at the main entrance to Kooser Elementary and then will proceed to Schoo Middle School.”

**Changes to the Project Drawings**

Telecom Drawings Items:

1TD1. Sheet 000.C02 – Security Details

1. Detail 2/000.C02 - Typical Existing Access Control Door: Remove the new 3/4” conduit shown between existing control panel box and the new control panel box. Add a new 3/4” conduit between existing door lock power supply cabinet and the new control panel box. See attached Sketch Sheet TS-001.

END

JLB-CAB/mdg

**Meeting Location:** LPS Operations Building

**Agenda Items:**

1. A mandatory Pre-Bid Meeting was held on Wednesday January 4, 2017, at 2:30 PM. Meeting was held at LPS Operations Building, 800 South 24th Street. The following agenda items were reviewed and discussions held as additionally noted.
2. Introductions:
  - A. Introductions were made.
  - B. Attached is a roster of attendees for the project record.
3. Project Organization:
  - A. Scott Wieskamp – LPS Director of Facilities and Maintenance.
  - B. Gordon Hardle – LPS Project Manager.
  - C. Matt Bellamy – LPS Director of Purchasing.
  - D. Jacob Butler – IP Design Group Security Designer (Bid Questions [jbutler@ipdesigngroup.com](mailto:jbutler@ipdesigngroup.com)).
  - E. Craig Bryan – IP Design Group Project Manager ([cbryan@ipdesigngroup.com](mailto:cbryan@ipdesigngroup.com)).
4. Project Description:
  - A. Scope of work includes, but is not limited to, the following: Construction of security and technology improvements, including cabling and accessories, card access equipment installation, electrical work, and general construction work as indicated in the bidding documents.
  - B. This bid is for work in seven (7) schools, which are Adams Elementary School, Kooser Elementary School, Kloefkorn Elementary School, Culler Middle School, Schoo Middle School, Sherrill Education Center, and Southeast High School.
  - C. Complete bid. Partial bids will not be accepted.
5. Instructions to Bidders:
  - A. Review Section 00 21 13 Instructions to Bidders and its requirements in its entirety:
    - 1) Each Bidder has read and understands the documents.

- 2) **Each Bidder has visited the site (LPS and IP Design Group will conduct site visits on Friday, January 6, 2017. Site visits will begin at 3:15 PM at the main entrance to Kooser Elementary and then will proceed to Schoo Middle School.)**
  - 3) Bids are based on materials, systems and equipment as identified in the bidding documents or addenda.
  - 4) Permits, fees and licenses included.
  - 5) **Bidders seeking Interpretations (RFIs) must submit IP Design Group in writing no later than seven (7) calendar days prior to the date for receipt of bids.**
  - 6) **Bidders seeking proposed substitutions for materials, products and equipment described in the bidding documents shall also submit such in writing request to IP Design Group in writing no later than seven (7) calendar days prior to the date for receipt of Bids.**
  - 7) All written requests should be submitted 5:00 PM Monday, January 9, 2017, to allow time for review and confirmation by addendum.
  - 8) **An abbreviated addendum following the site visits will be issued as/if needed to address questions that may arise.**
- B. Verbal communication is not valid; written clarification will be given only as issued by addendum.
- C. We will issue an addendum reflecting changes and clarifications generated by this meeting and as needed to answer questions no later than end of day Friday, January 6, 2017.
- D. Bid Date, Time, Place:
- 1) 2:00 PM, local standard time on Tuesday, January 17, 2017.
  - 2) As described in the instructions to Bidders: Bids, consisting of completed bid forms, bid security and any other documents required to be submitted with bids, shall be submitted in an opaque, sealed envelope, with a label on the outside of the envelope with the following information:  
  
Lincoln Public Schools  
Operation Building  
800 South 24th Street  
Lincoln, NE 68510  
Attention: Matt Bellamy  
  
Bid Package No. 8805
  - 3) Bids must be received at the LPS Operations Building on or before the date and time for receipt of bids, as specified in the Advertisement for Bids for the project. Bids received after the date and time for receipt of bids will not be opened and will be rejected. Bids sent by mail must be received no later than bid time.

6. Obtaining Bid Documents:
  - A. Bid documents may be obtained from A&D Technical Supply Co. Inc., 1822 N Street, Lincoln, Nebraska 68508 (402) 474-5454.
  - B. A \$50.00 refundable deposit, made payable to The Lincoln Public Schools is required. Deposits will be refunded to unsuccessful Bidders if undamaged documents are returned within 30 days of award of contract.
  - C. Bidders may have plans shipped by paying the printer an additional amount for shipping and handling, as determined by the printer.
7. Bid Submission Review of Bid Form 00 41 00:
  - A. Bid form:
    - 1) Must be on exact copy of bid form in the bid documents.
  - B. Include:
    - 1) Bid security (5%).
    - 2) LPS will issue the successful contractor the needed tax exemption forms after bidding.
    - 3) Allowances (\$15,000.00) as described in Section 01 21 00 Allowances.
    - 4) Complete bid.
  - C. Unit Prices (as described in Section 01 22 00 Unit Prices).
  - D. Deduct Alternates.
  - E. Recognition of addenda required on bid form.
  - F. Voluntary substitutions only as specified.
  - G. Subcontractor List:
    - 1) All data cabling requires contractor or subcontractor verification of CommScope or Systemax SCS Certification per 27 05 01 Common Work Results for Communications.
  - H. A revised bid form will issued by addendum to incorporate items discussed today.
8. Addenda/Interpretations:
  - A. Written requests must be received seven calendar days prior to bid date (verbal communication is not valid; written clarification is only by addendum).
  - B. We will issue an addendum reflecting changes and clarifications generated by this meeting.

## 9. LPS Terms and Conditions:

## A. Exhibits A-I:

- 1) Payment bond.
- 2) Performance bond.
- 3) Certificate of Insurance.
- 4) Job site security requirements.
- 5) Criminal records directive/disclosure.
- 6) Contractor/subcontractor/supplier criminal records certification.
- 7) Certified worker list.
- 8) LPS school term calendar.

## B. Form of Agreement:

- 1) AIA A107-2007 (in project manual).
- 2) General Conditions: Incorporated in AIA A107-2007.

## 10. 01 10 00 – Summary:

## A. Review anticipated project schedule:

- 1) Expect notice to proceed: On or before January 31, 2017.
- 2) Pre-construction conference: On or before February 10, 2017.
- 3) Substantial completion: June 9, 2017.

## B. Review work hours:

- 1) School Hours: Selected work which does not disrupt normal school activity may be completed during regular school hours. As long as all activities are coordinated with **LPS Facilities and Maintenance**, other work can occur only during non-school hours from 5:00 PM to 5:00 AM. Contractor shall coordinate work with after-hours activities. Work which must be completed after normal hours will include all work in classrooms, noisy operations, and other work which compromises student safety or normal activities.
- 2) All work areas shall be cleaned on a daily basis and shall be clean prior to the start of every school day.
- 3) The Contractor shall provide a two-week, look-ahead schedule of major tasks to use as the coordination tool with **LPS Facilities and Maintenance and IPDG**. The two-week look ahead shall be reviewed at each construction meeting.
- 4) Summer Hours - 6:00 AM to 6:00 PM unless otherwise coordinated with LPS Facilities and Maintenance.
- 5) Last day of 2016-17 school year - May 24, 2017.

11. Review Price and Payment Procedures (Section 01 20 00):
  - A. Standard AIA Forms G702 and G703.
  - B. Review the details of this section and submit in accordance with protocols and schedule as defined by LPS.
12. Administrative Requirements (Section 01 30 00):
  - A. This section provides details of expected meetings, submittals and procedures.
  - B. Progress payments (LPS).
  - C. Submittal Exchange will be utilized on this project.
13. Temporary Facilities and Controls (Section 01 50 00):
  - A. Use of existing facilities is permitted (LPS). **There are staff restrooms at most sites that may be used. Use of student restrooms is prohibited.**
  - B. Failure to maintain protocol and cleanliness will result in the contractor having to provide their own facilities (LPS).
  - C. Waste Removal – Daily cleaning required (LPS).
  - D. Security – Provide your own secure facilities.
  - E. Use of utilities and spaces (LPS).
  - F. Materials and equipment storage (LPS). **There could be some limited storage available during the school year but that will have to be determined for each site. Coordinate with LPS Facilities and Maintenance.**
  - G. Access and parking (LPS). **During the school year, parking will be limited and will require mostly street parking.**
14. Closeout Submittal Requirements (Section 01 78 00 and technical sections):
  - A. Project record documents.
  - B. Operation and maintenance manuals.
  - C. Warranties.
  - D. Appendix A – Electronic Access Control Test.
  - E. Appendix B – Closeout Checklist.

15. **Contractor Questions:**

- A. **For deduct Alternate 2, can you clarify that all doors with Note 7 will not require dedicated emergency power?**

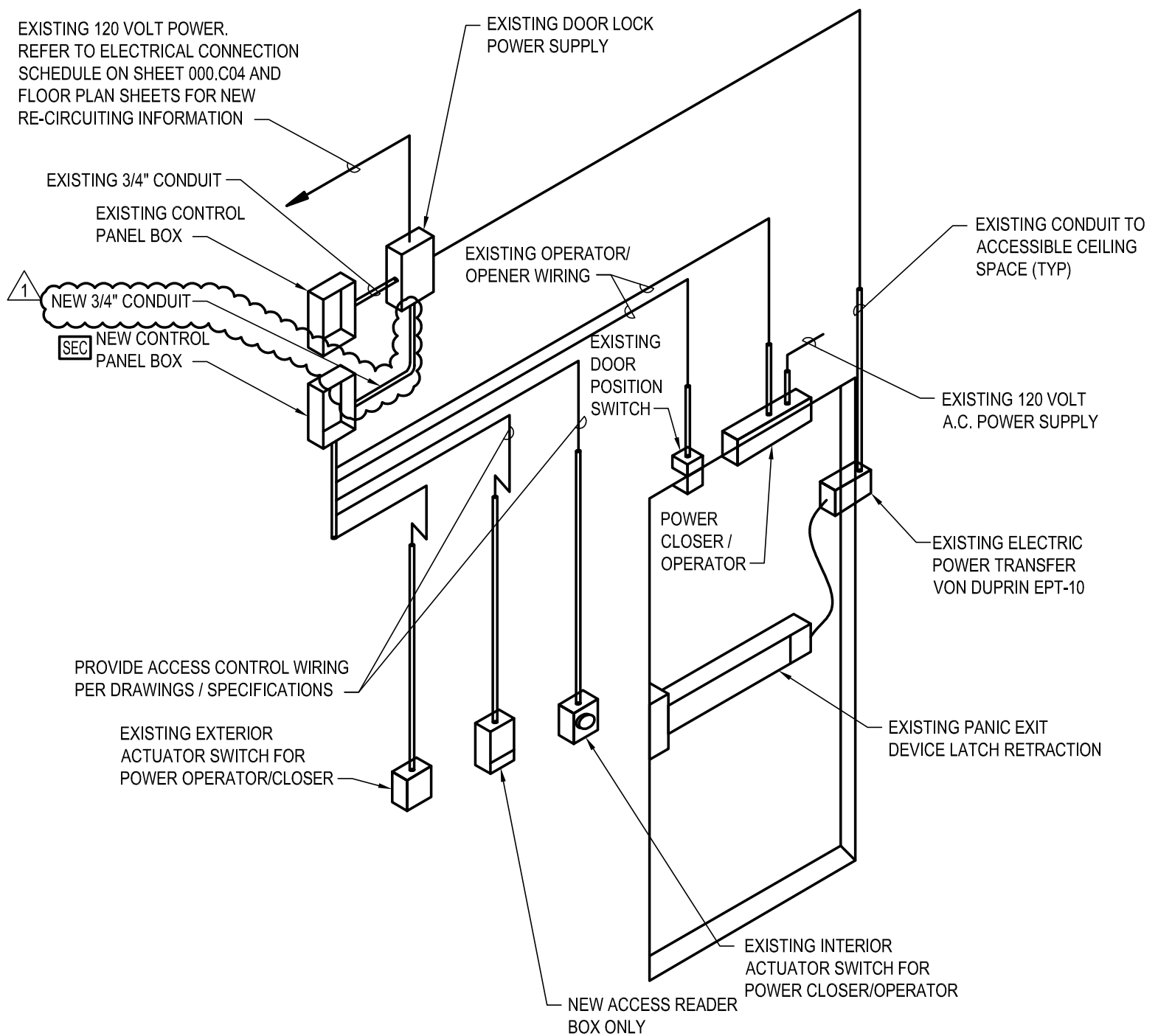
**Response: Correct. For deduct alternate 2, all door power supplies within the Electrical Door Connection Schedule on Drawing 000.C04 that have Note 7 associated with them, will not require new dedicated emergency power circuits for the deduct alternate. For the base bid, all door power supplies required dedicated emergency power.**

JLB/mdg

# Attendance Roster

LPS ELECTRONIC ACCESS CONTROL UPGRADE GROUP B PRE-BID MEETING  
January 4, 2017

✓	Name	Organization/ Company	Email	Phone No.	Fax No.	Cell Phone No.
	D. Dawns	Dawns Electronic	dd@daawns-electronic.net	(902) 733-3028	(902) 733-3800	
	B SHAW	ECCO	B SHAW @ ECCO.COM	402-350-5512		
	Austin Pohlmann	CCF	apohlmann@cce-ne.com	402-420-7435	(402) 420-7436	
	ERIC WEBER	ENGINEERED CONTROLS	erweb@engineeredcontrols.com	402-540-4588		
	Ryan Gibbs	Kidwell	rgibbs@kidwell-us.com	402-475-5151		
	Kelly Schroer	Kidwell	Kschroer@kidwell.us.com	402-817-3475		
	Ryan Meinke	Americum	ryan@americum.biz	402-499-9700	402-499-9771	
	Nate Thorn	Americum	nate@americum.biz	(402) 489-9700	(402) 489-9771	
	Matt Bellomy	LPS	mhbello@lps.org	436-1753		
	JERRY VAUGHAN	CECM	JVAUGHAN@CECM.COM	429-2704	474-0114	
	Jordan Thack	LPS	jthack@lps.org	436-1072		
	JOHN BURBACHER	LPS	JBURBACH@LPS.ORG	" "		
	Jacob Butler	IPDG	JBUTLER@IPDESIGNGROUP.COM	402-346-7007		



**ACCESS CONTROL INSTALLATION DETAIL NOTES**

1. REFER TO ACCESS CONTROL OPENING SCHEDULE FOR DETAILED INFORMATION PER DOOR.
2. CONDUIT AND J-BOXES ARE EXISTING UNLESS NOTED OTHERWISE.
3. THE FOLLOWING EQUIPMENT IS EXISTING UNLESS NOTED OTHERWISE. ELECTRIC LOCKS, ELECTRIC STRIKES, MAG-LOCKS, EXIT DEVICES, WIRE TRANSFER DEVICES AND DOOR LOCK POWER SUPPLIES.
4. INSTALL NEW SEC CABINET SO THAT YOU CAN PULL BACK AND REUSE THE EXISTING CABLING TO THE DOOR HARDWARE, WIRE TRANSFER DEVICES, CARD READERS, AND DOOR LOCK POWER SUPPLIES.

**TYPICAL EXISTING ACCESS CONTROL DOOR**

NO SCALE

2  
000.C02



**LPS GROUP B  
ACCESS CONTROL UPGRADE**

PROJECT NO.  
20155337

DATE  
01/05/17

DRAWING REFERENCED: 000.C02  
ADDENDUM NO.: 001

SKETCH  
T S-001