

ADDENDUM NO. CC-2

EXCHANGE BANK
SALINA, KANSAS
DLR GROUP PROJECT NO. 12-16105-00

6457 Frances Street, Suite 200
Omaha, NE 68106
tel 402/393-4100
fax 402/393-8747
omaha@dlrgroup.com
www.dlrgroup.com

COMBINED CONTRACT

September 20, 2016

NOTICE TO BIDDERS: Amend the Project Manual and Drawings to the above referenced project as follows:

PROJECT MANUAL

ITEM NO. 1 GENERAL

- A. See Attachment No. 1 - Pre-Bid Conference sign-in sheet.

ITEM NO. 2 INVITATION TO BID

- A. General Contractor: Final bid proposals shall be sent via e-mail to the following e-mail address. Bids shall be received at the designated e-mail no later than 2:00 P.M. on September 26, 2016. Hard copies shall be sent via mail to the address listed in the Project Manual and in care of Mike Gengler.

- 1. E-mail bids to: mgengler@dlrgroup.com

ITEM NO. 3 GENERAL AND SUPPLEMENTARY CONDITIONS OF THE CONTRACT FOR CONSTRUCTION

- A. It shall be the responsibility of the General Contractor to carry Builder's Risk Insurance (All Risk) or equivalent policy form in the amount of the initial Contract Sum, plus the value of subsequent Contract Modifications and cost of materials supplied or installed by others, comprising total value for the entire project.

ITEM NO. 4 SECTION 064113 WOOD-VENEERED-FACED ARCHITECTURAL CABINETS

- A. Paragraph 2.3.E.1: Revise wood species to Cherry.
- B. Paragraph 2.3.F.1: Modify "Compatible species to that indicated for exposed surfaces, stained to match" to read "Thermoset decorative panels: Particle board or medium density fiberboard finished with thermally fused, white melamine-impregnated decorative paper."

ITEM NO. 5 SECTION 084113 ALUMINUM-FRAMED ENTRANCES AND STOREFRONTS

- A. Manko is approved as an equal substitute system.

ITEM NO. 6 SECTION 085113 ALUMINUM WINDOWS

- A. Manko is approved as an equal substitute system.

ITEM NO. 7 SECTION 271500 COMMUNICATION HORIZONTAL CABLING

- A. Revise Category 6 cabling to Category 5 cabling.

DRAWINGS

ITEM NO. 1 ALL CIVIL DRAWINGS

- A. Delete all references to flag pole and associated lighting shown on civil drawings.

ITEM NO. 2 DRAWING C9.1 UTILITY PLAN

- A. Revise drawing as shown on attachment C9.1-1

ITEM NO. 3 DRAWING A1.1 FLOOR PLAN

- A. All framed walls in Basement Level shall be Wall Type A.1.
- B. Paint all concrete walls in Basement P-1.
- C. Add coat shelf and rod in Coats 108A
- D. Wall type at doors 108 and 108A shall be Wall Type A.1
- E. Add counter top in View Room 114. See elevation 45/A11.1 on revised sheet A11.1-1 attached to this Addendum.
- F. See attached drawing A1.1-1 for trash enclosure details.
- G. In General Notes: Delete note G in its entirety.
- H. In General Notes: Delete note K in its entirety.
- I. In General Notes: Delete note Q in its entirety.
- J. In General Notes: Delete note T in its entirety.

ITEM NO. 4 DRAWING A3.1 REFLECTED CEILING PLAN

- A. Mapes prefabricated canopy and dimensions added.

ITEM NO. 5 DRAWING A7.2 WALL SECTIONS

- A. Wall sheathing shall be 1/2" Oriented Strand Board (OSB)
- B. See revised detail 31/A7.2
- C. See revised detail 33/A7.2
- D. See revised detail 34/A7.2

ITEM NO. 6 DRAWING A9.1 DOOR AND FRAME SCHEDULE

- A. Revise drawing as shown on attachment A9.1-1

ITEM NO. 7 DRAWING A10.1

- A. Revise Detail 25/A10.1 as shown on Attachment A10.1-1

ITEM NO. 8 DRAWING A11.1

- A. Revise drawing as shown on attachment A11.1-1

ITEM NO. 9 DRAWING S1.0 FOUNDATION PLAN AND GENERAL NOTES

- A. Delete reference to 4" concrete slab-on-grade in the Future Tenant space. Install 4" granular fill base only.

ITEM NO. 10 DRAWING S2.0 DETAILS

- A. See attachment S1a for miscellaneous revised structural details

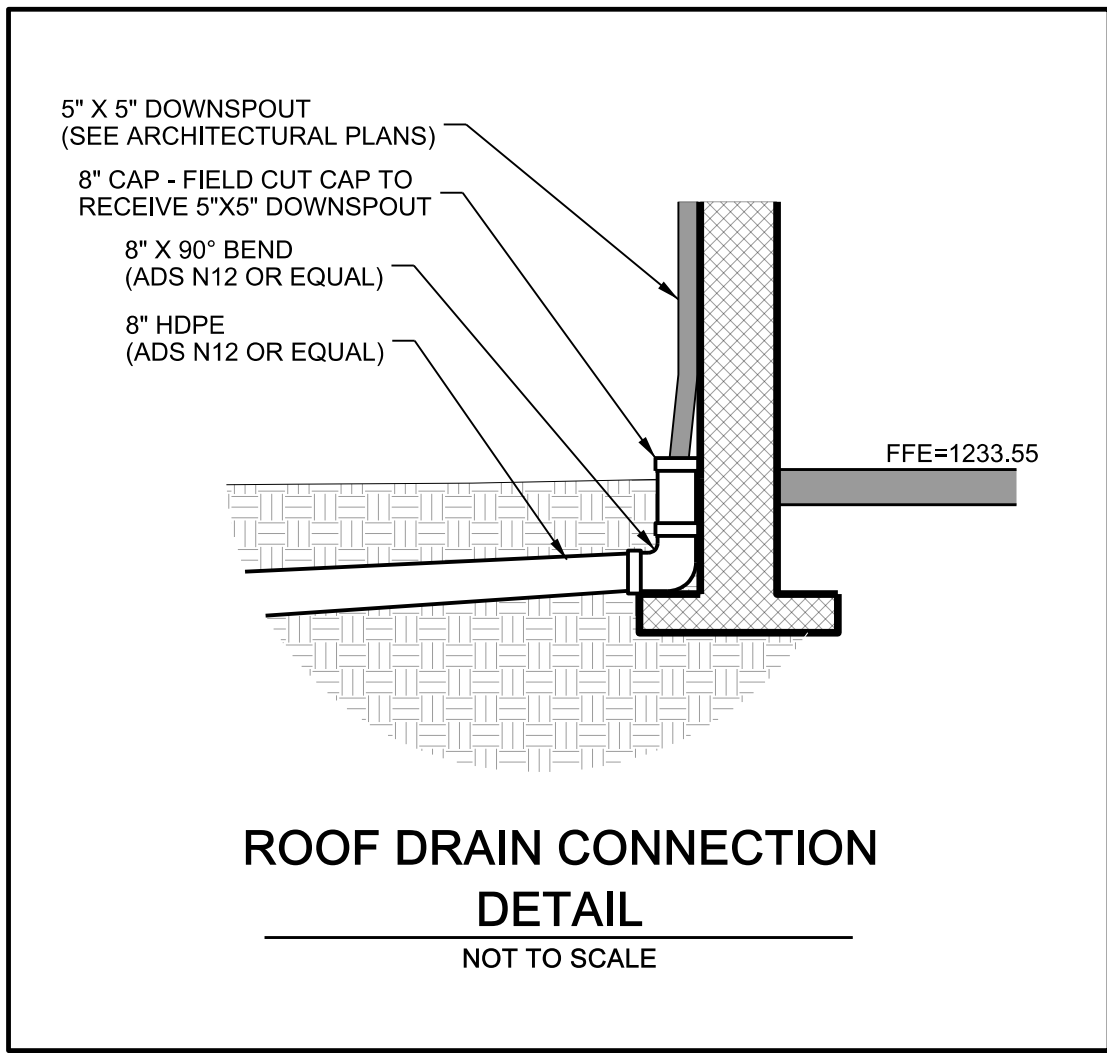
ITEM NO. 11 DRAWING E1.1 ELECTRICAL FLOOR PLANS

- A. In General Notes: Add Note F: Provide cabling for lighting control and HVAC systems.

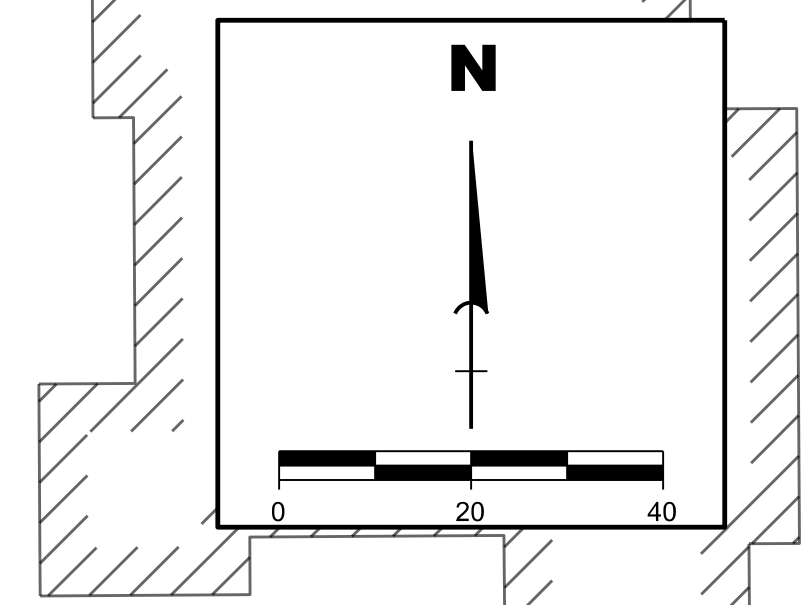
ITEM NO. 12 DRAWING E3.1 ELECTRICAL DETAILS AND RISER DIAGRAMS

- A. Detail 5/E3.1 Electrical Riser Diagram: Revise the MTS and the TEMPORARY GENERATOR CONNECTION FUSED DISCONNECT ratings to 400 amps. Provide 225 amp fuses in the disconnect.

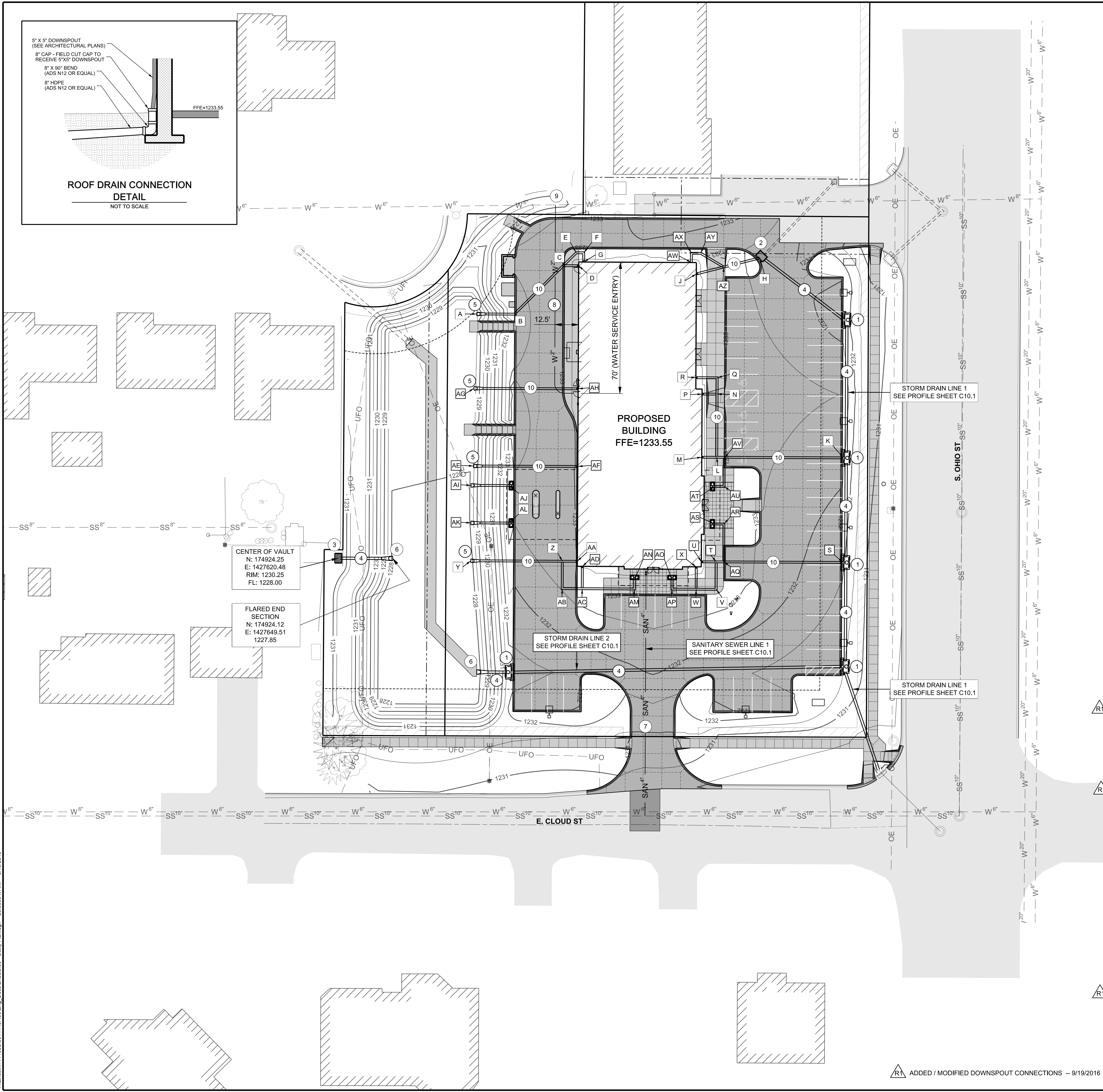
END OF ADDENDUM



**ROOF DRAIN CONNECTION
DETAIL**
NOT TO SCALE



- CONSTRUCTION NOTES**
- 1 CONSTRUCT CURB INLET (SEE PROFILE ON SHEET C10.1 & DETAILS ON SHEET C12.1)
5 EA
 - 2 CONSTRUCT 4' X 4' GRATE INLET (SEE DETAILS ON SHEET C15.1)
1 EA
 - 3 CONSTRUCT 5'-6" X 4'-6" GRATE INLET (SEE DETAILS ON SHEET C15.1)
1 EA
 - 4 CONSTRUCT 15" RCP (CLASS III)
521 LF
 - 5 CONSTRUCT 12" CONCRETE FLARED END SECTION
4 EA
 - 6 CONSTRUCT 15" CONCRETE FLARED END SECTION
2 EA
 - 7 CONSTRUCT 4" PVC SANITARY SEWER SERVICE LINE (SEE PROFILE ON SHEET C10.1)
 - 8 CONSTRUCT 2" TYPE 'K' COPPER WATER SERVICE LINE (5' MINIMUM COVER)
115 LF
 - 9 CONSTRUCT WATER SERVICE CONNECTION (SEE DETAIL ON SHEET C16.1)
1 EA
 - 10 CONSTRUCT ROOF DRAIN COLLECTION SYSTEM WITH 8" HDPE PIPE AND FITTINGS. ALL PIPE AND FITTINGS SHALL BE ADVANCED DRAINAGE SYSTEMS (ADS) N12 OR APPROVED EQUAL AND CONSTRUCTED PER THE MANUFACTURER'S SPECIFICATIONS.



ROOF DRAIN DATA

PT. NO.	NORTHING	EASTING	FLOWLINE	NOTES
A	175054.46	1427694.32	1229.00	FES OUTLET
B	175054.37	1427714.32	1229.20	8" X 45 DEG. BEND
C	175080.19	1427740.38	1229.57	8" X 8" LINE WYE
D	175080.16	1427748.62	1229.75	DOWNSPOUT CONNECTION
E	175087.07	1427747.32	1229.66	8" X 45 DEG. BEND
F	175087.05	1427751.32	1229.70	8" X 90 DEG. BEND
G	175082.15	1427751.30	1229.75	DOWNSPOUT CONNECTION
H	175084.35	1427845.21	1229.00	OUTLET TO GRATE INLET
J	175075.79	1427811.44	1229.75	DOWNSPOUT CONNECTION
K	174977.75	1427889.77	1228.50	OUTLET TO CURB INLET
L	174978.09	1427822.24	1229.18	8" X 8" TEE
M	174978.09	1427814.34	1229.50	DOWNSPOUT CONNECTION
N	175011.72	1427822.39	1229.51	8" X 8" TEE
P	175011.75	1427814.49	1229.75	DOWNSPOUT CONNECTION
Q	175020.41	1427822.43	1229.60	8" X 90 DEG. BEND
R	175020.46	1427811.20	1229.75	DOWNSPOUT CONNECTION
S	174921.97	1427889.52	1228.50	OUTLET TO CURB INLET
T	174922.28	1427821.98	1229.50	8" X 8" TEE
U	174922.31	1427814.09	1229.75	DOWNSPOUT CONNECTION
V	174907.66	1427821.93	1229.59	8" X 90 DEG. BEND
W	174907.71	1427811.26	1229.69	8" X 8" TEE
X	174919.56	1427811.31	1229.75	DOWNSPOUT CONNECTION
Y	174922.86	1427691.09	1229.00	FES OUTLET
Z	174922.64	1427739.92	1229.49	8" X 8" TEE
AA	174922.61	1427747.92	1229.75	DOWNSPOUT CONNECTION
AB	174908.03	1427739.85	1229.57	8" X 90 DEG. BEND
AC	174907.98	1427750.52	1229.68	8" X 8" TEE
AD	174919.83	1427750.57	1229.75	DOWNSPOUT CONNECTION
AE	174973.41	1427692.60	1229.00	FES OUTLET
AF	174973.16	1427748.14	1229.75	DOWNSPOUT CONNECTION
AG	175014.80	1427682.79	1229.00	FES OUTLET
AH	175014.55	1427748.33	1229.75	DOWNSPOUT CONNECTION
AI	174963.08	1427691.27	1229.00	FES OUTLET
AJ	174962.99	1427711.57	1229.50	DOWNSPOUT CONNECTION
AK	174943.08	1427691.18	1229.00	FES OUTLET
AL	174942.99	1427711.48	1229.50	DOWNSPOUT CONNECTION
AM	174907.86	1427778.37	1229.98	8" X 90 DEG. BEND
AN	174912.86	1427778.40	1230.10	DOWNSPOUT CONNECTION
AO	174912.77	1427798.40	1230.00	DOWNSPOUT CONNECTION
AP	174907.77	1427798.37	1229.85	8" X 90 DEG. BEND
AQ	174922.26	1427825.94	1229.44	8" X 8" TEE
AR	174942.48	1427826.03	1229.70	8" X 90 DEG. BEND
AS	174942.50	1427821.03	1229.80	DOWNSPOUT CONNECTION
AT	174962.50	1427821.12	1229.50	DOWNSPOUT CONNECTION
AU	174962.48	1427826.19	1229.40	8" X 90 DEG. BEND
AV	174978.03	1427826.19	1229.13	8" X 8" TEE
AW	175081.89	1427808.70	1229.90	DOWNSPOUT CONNECTION
AX	175086.80	1427808.73	1229.80	8" X 90 DEG. BEND
AY	175086.77	1427813.73	1229.70	8" X 30 DEG. BEND
AZ	175079.48	1427825.95	1229.43	8" X 8" LINE WYE

1015 E. CLOUD ST.
SALINA, KS 67401

UTILITY PLAN
EXCHANGE BANK
SALINA, KS BRANCH

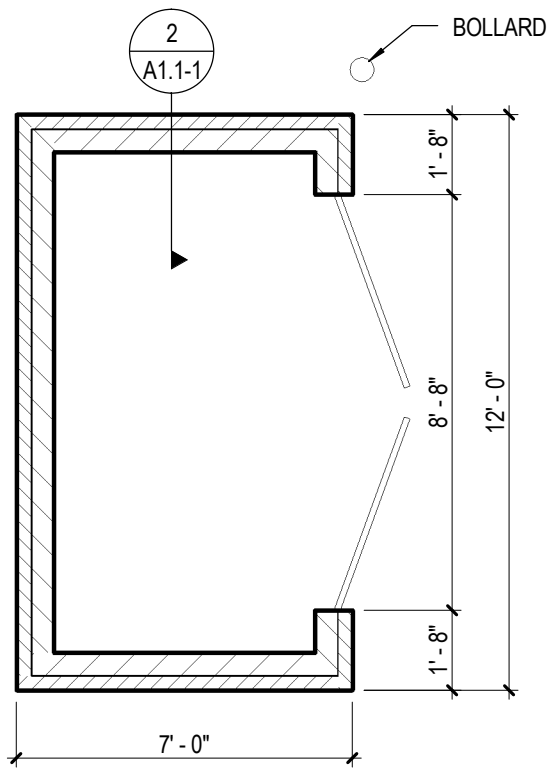
C9.1
12-16-05-00
8/18/2016
Revisions

DLR Group
Architecture Engineering Planning Interiors
© 2016, DLR Group Inc., a Kansas corporation. ALL RIGHTS RESERVED.

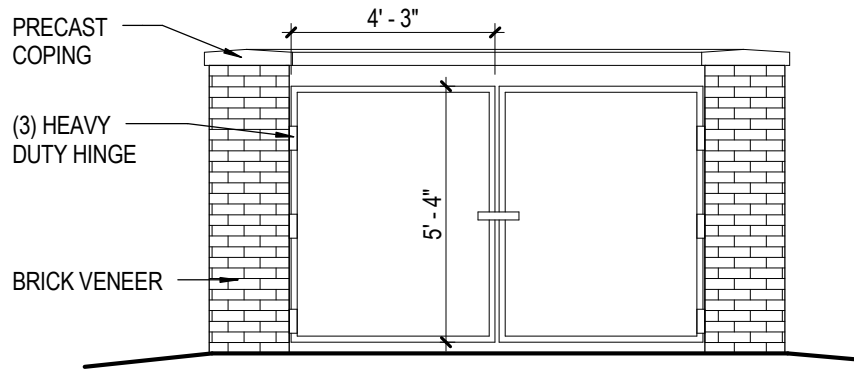
benesch
Alfred Benesch & Company
825 M Street - Suite 100
Lincoln, Nebraska 68508
402-479-2200

ADDED / MODIFIED DOWNSPOUT CONNECTIONS -- 9/19/2016

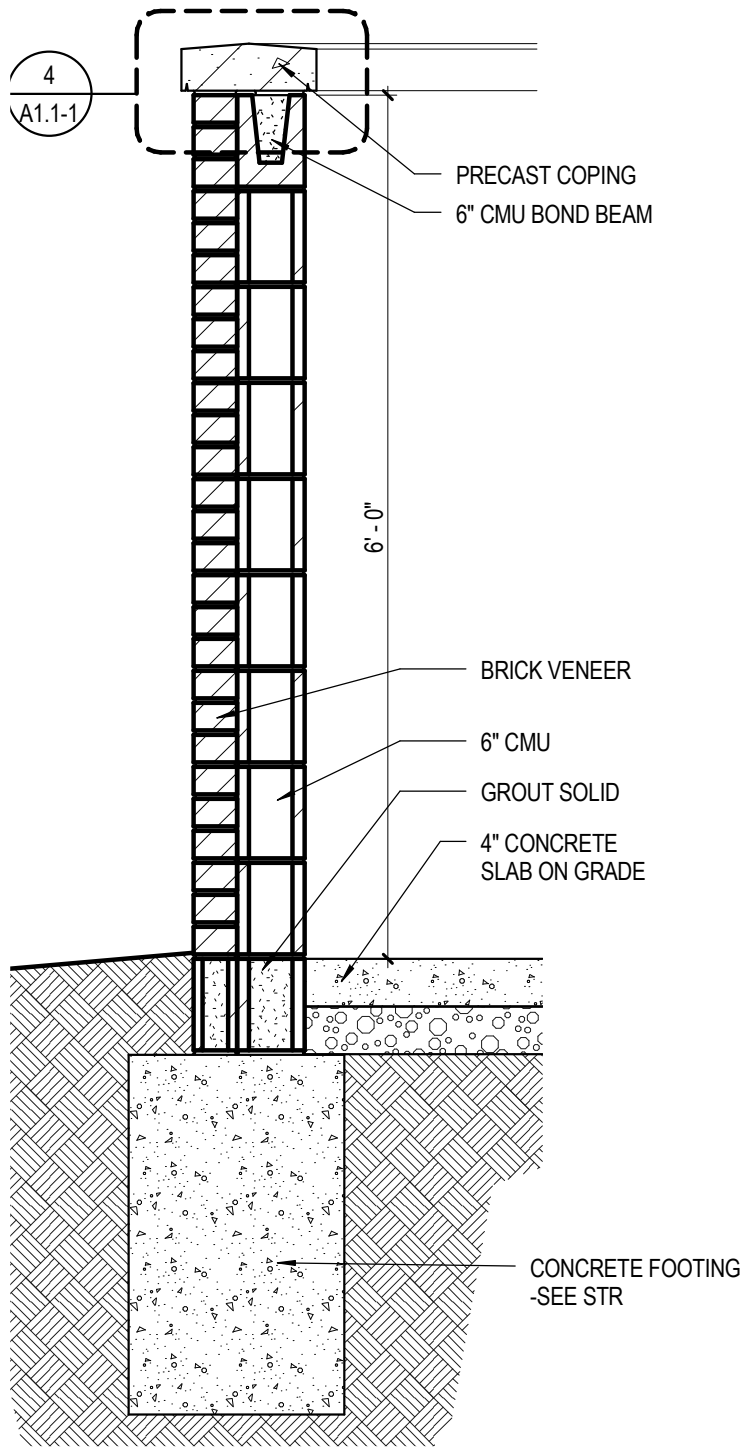
Y:\Lincoln\114005\0011437\00Eng_Docs\Sheets\09 - Utility Plan.dgn - 20,0000 ft. in. - 9/19/2016



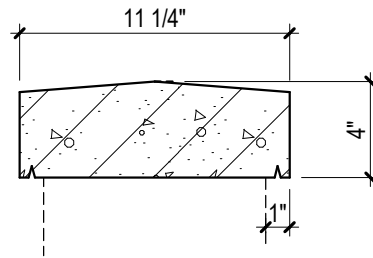
1 TRASH ENCLOSURE PLAN
 A1.1-1 SCALE: 1/4" = 1'-0"



3 TRASH ENCLOSURE ELEVATION
 A1.1-1 SCALE: 1/4" = 1'-0"



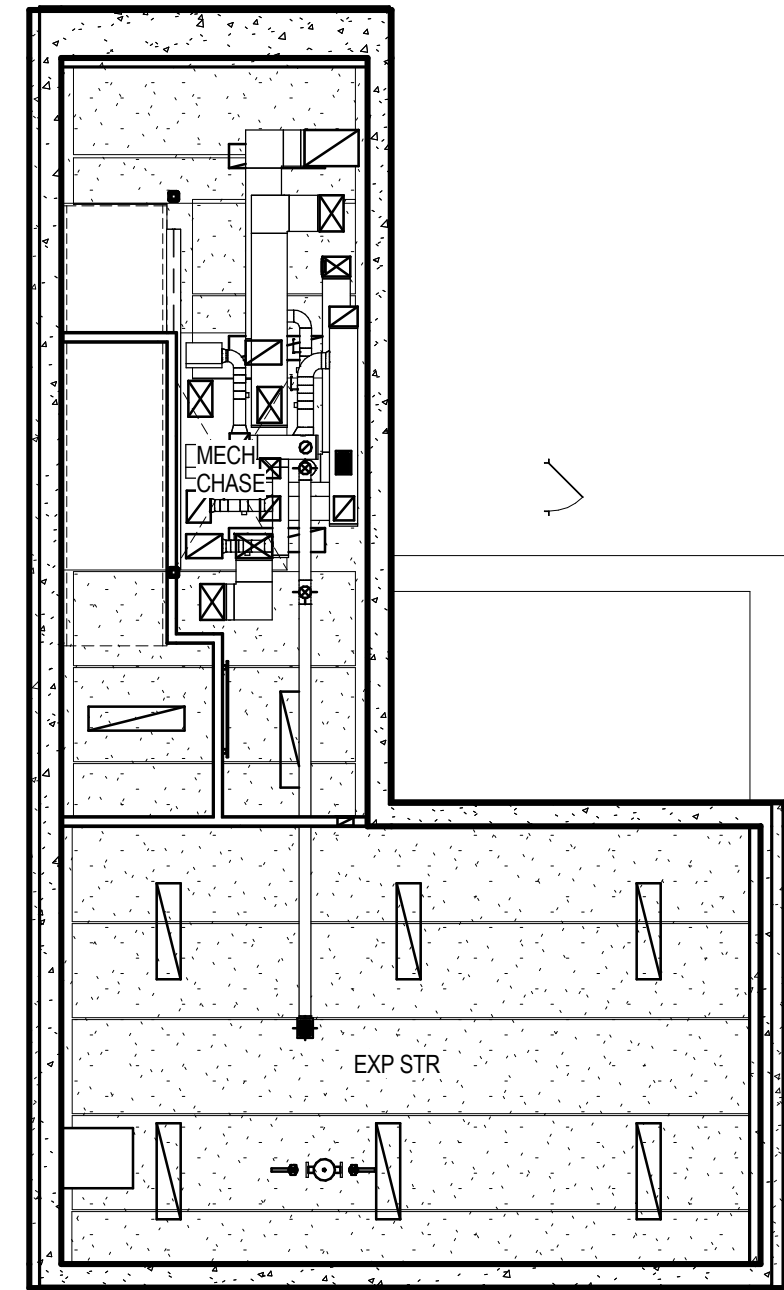
2 TRASH ENCLOSURE SECTION
 A1.1-1 SCALE: 3/4" = 1'-0"



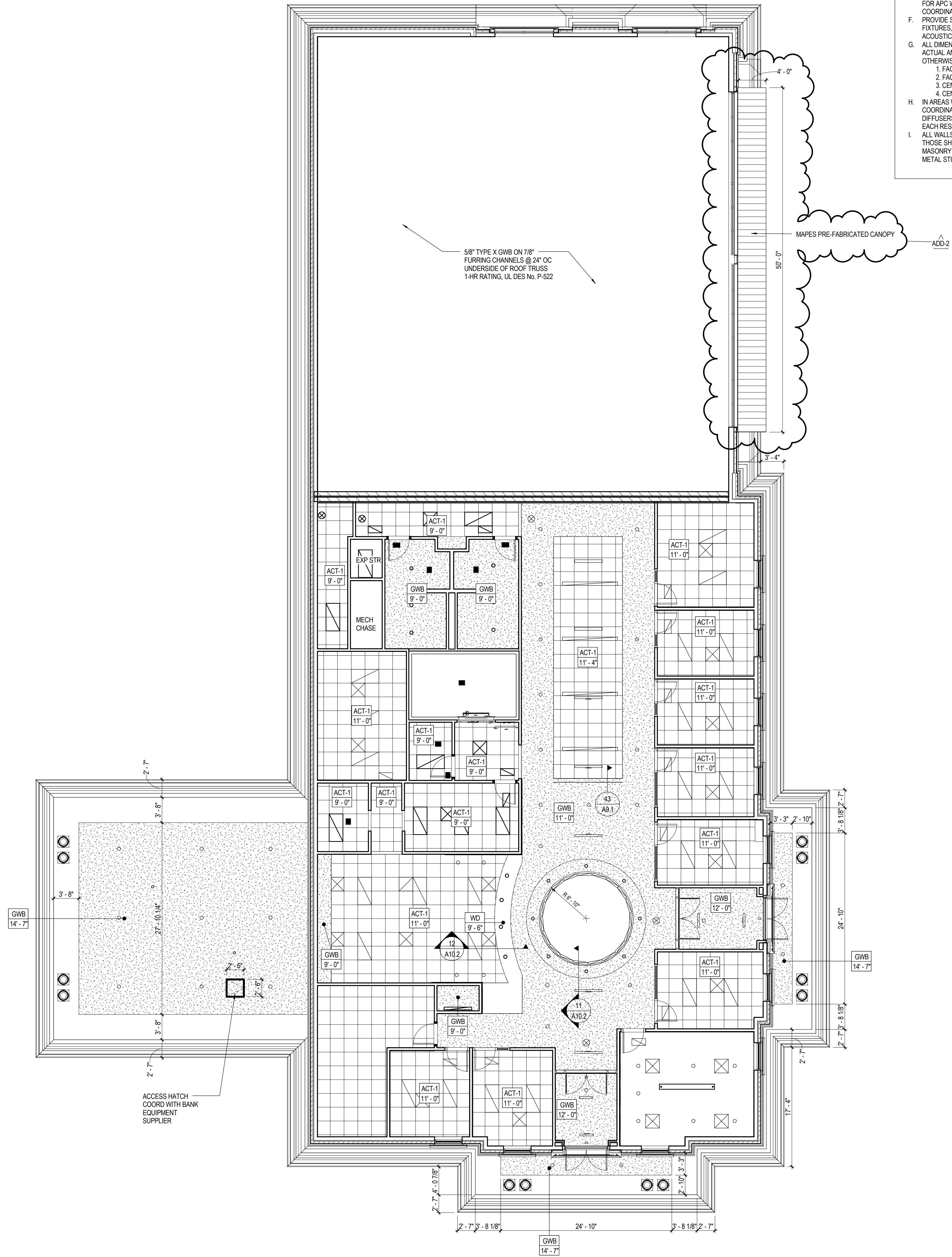
4 PRECAST COPING
 A1.1-1 SCALE: 1 1/2" = 1'-0"

C:\Revit\2.16105-00_AR_2016_Centering.mxd
9/20/2016 1:25:16 PM

REFLECTED CEILING PLAN, BASEMENT LEVEL
SCALE: 1/8" = 1'-0"
NORTH



REFLECTED CEILING PLAN, FIRST LEVEL
SCALE: 1/8" = 1'-0"
NORTH



- REFLECTED CEILING PLAN NOTES:**
- REFLECTED CEILING PLAN GENERAL NOTES APPLY TO ALL REFLECTED CEILING PLAN SHEETS.
 - ALL CEILING GRIDS/PANELS SHALL BE CENTERED IN EACH ROOM UNLESS NOTED OTHERWISE.
 - CEILING HEIGHTS ARE AS NOTED ON THE REFLECTED CEILING PLAN UNLESS NOTED OTHERWISE.
 - ALL ELECTRICAL FIXTURES, SPEAKERS, SMOKE AND THERMAL DETECTORS, MECHANICAL GRILLES, SPRINKLER HEADS, ETC., SHALL BE CENTERED BETWEEN CEILING GRIDS UNLESS NOTED OTHERWISE. SPRINKLER HEADS SHALL BE WITHIN A 3' RADIUS CENTERED BETWEEN CEILING GRIDS.
 - IN ACoustICAL CEILING PANELS WITH SCORE IN THE CENTER, CENTER DEVICES REFERENCED IN NOTED, IN ONE HALF OF THE TILE. DO NOT LOCATE ON THE SCORE. FOR APC WITH MULTIPLE SCORED PATTERNS, COORDINATE LOCATION WITH ARCHITECT.
 - PROVIDE SUSPENSION SYSTEM AROUND ELECTRICAL FIXTURES, MECHANICAL GRILLES, DIFFUSERS, ETC. AT ACoustICAL PANEL CEILING.
 - ALL DIMENSIONS ON REFLECTED CEILING PLANS ARE ACTUAL, AND ARE TO THE FOLLOWING UNLESS NOTED OTHERWISE:
 - FACE OF FINISHED WALL
 - FACE OF FINISHED BULKHEADS
 - CENTERLINE OF COLUMNS
 - CENTERLINE OF TEES
 - IN AREAS WITH EXPOSED STRUCTURE CEILING, COORDINATE EXACT LOCATIONS OF MECHANICAL GRILLES, DIFFUSERS, DUCTWORK, AND ELECTRICAL FIXTURES WITH EACH RESPECTIVE SUBCONTRACTOR.
 - ALL WALLS EXTEND TO UNDERSIDE OF DECK EXCEPT THOSE SHOWN SHADED IN WHICH GYPSUM BOARD OR MASONRY EXTENDS MIN. 4" ABOVE FINISHED CEILING. ALL METAL STUDS EXTEND TO UNDERSIDE OF STRUCTURE.

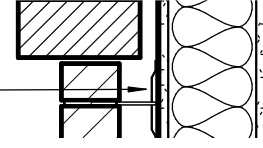


1014 E. CLOUD ST.
SALINA, KS 67401

REFLECTED CEILING PLAN, FIRST LEVEL
EXCHANGE BANK
SALINA, KS BRANCH

A3.1
12-16105-00
8/18/16
Revised
ACT 1 9/21/16 DECS/DS

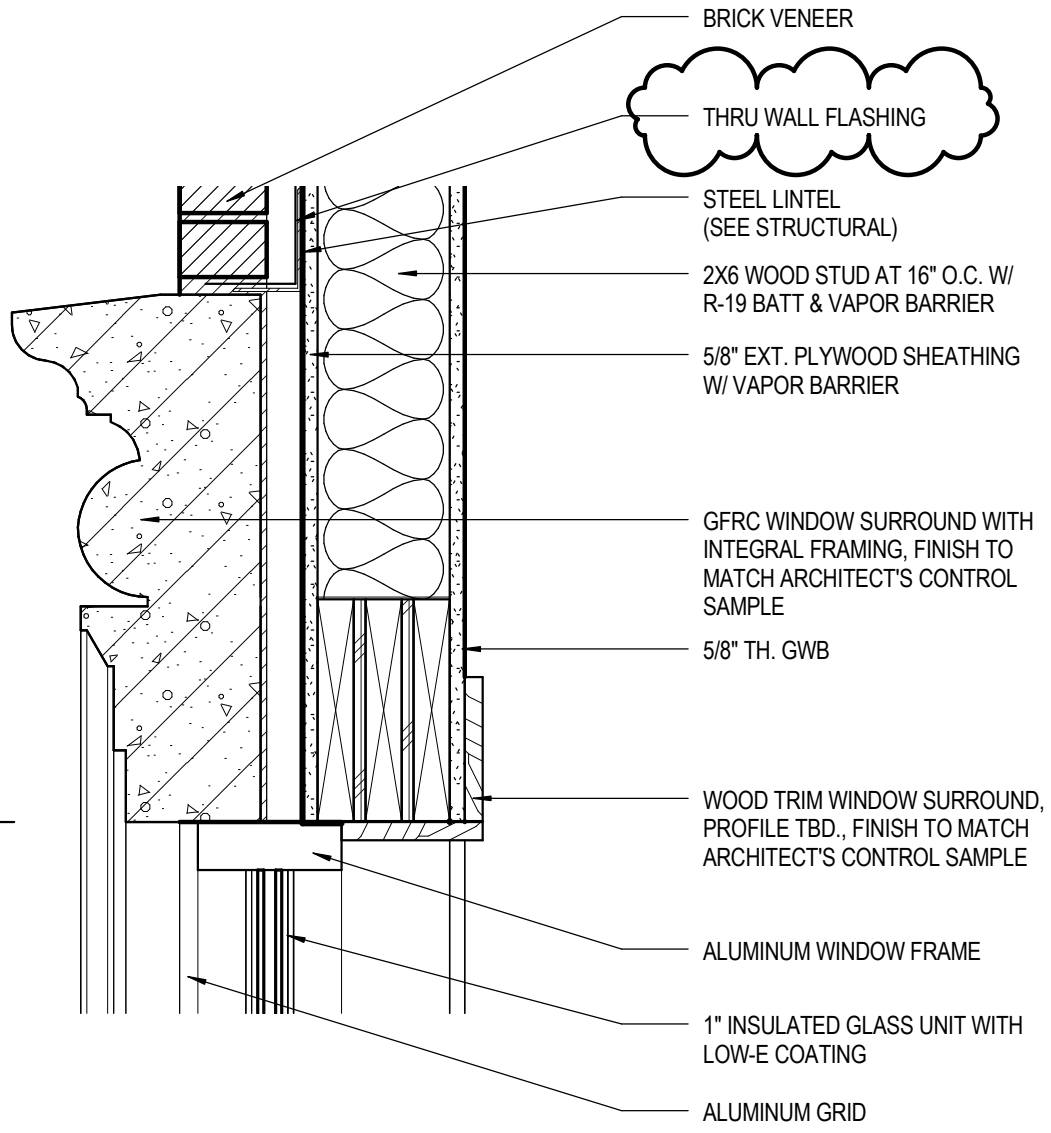
BRICK TIE



21 TYP WALL SECTION AT WINDOW - DETAIL AT CORNICE

A7.2 SCALE: 1" = 1'-0"

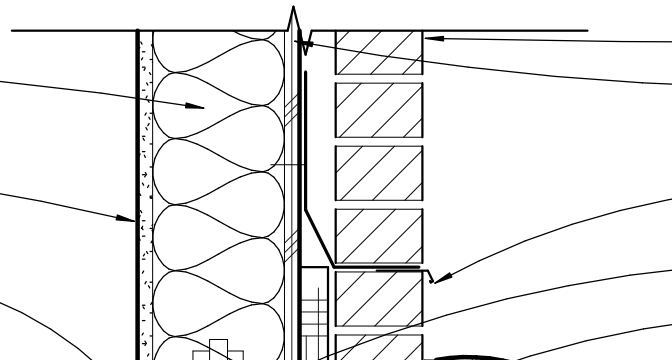
WINDOW HEAD
EL = 108-8 11/16"



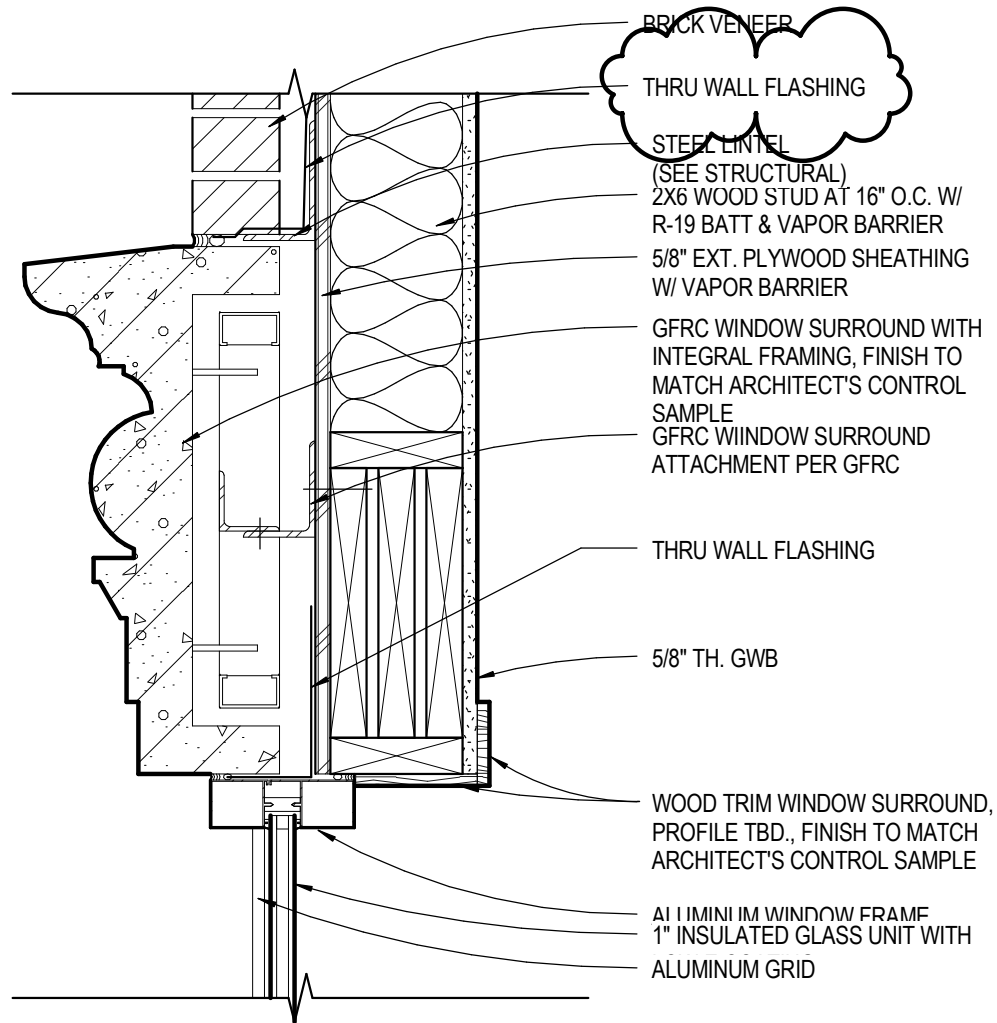
31 TYP WALL SECTION AT WINDOW - DETAIL AT WINDOW HEAD

A7.2 SCALE: 1 1/2" = 1'-0"

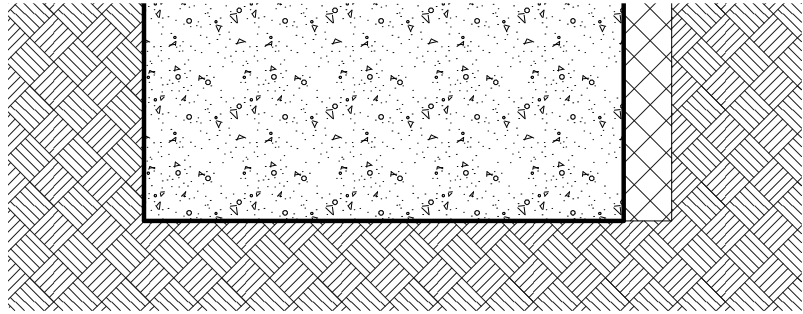
- 2X6 WOOD STUD @ 16" O.C. W/ R-19 BATT & VAPOR BARRIER
- 5/8" TH. GWB
- 15# FELT BOND BREAKER
- CONC. SLAB



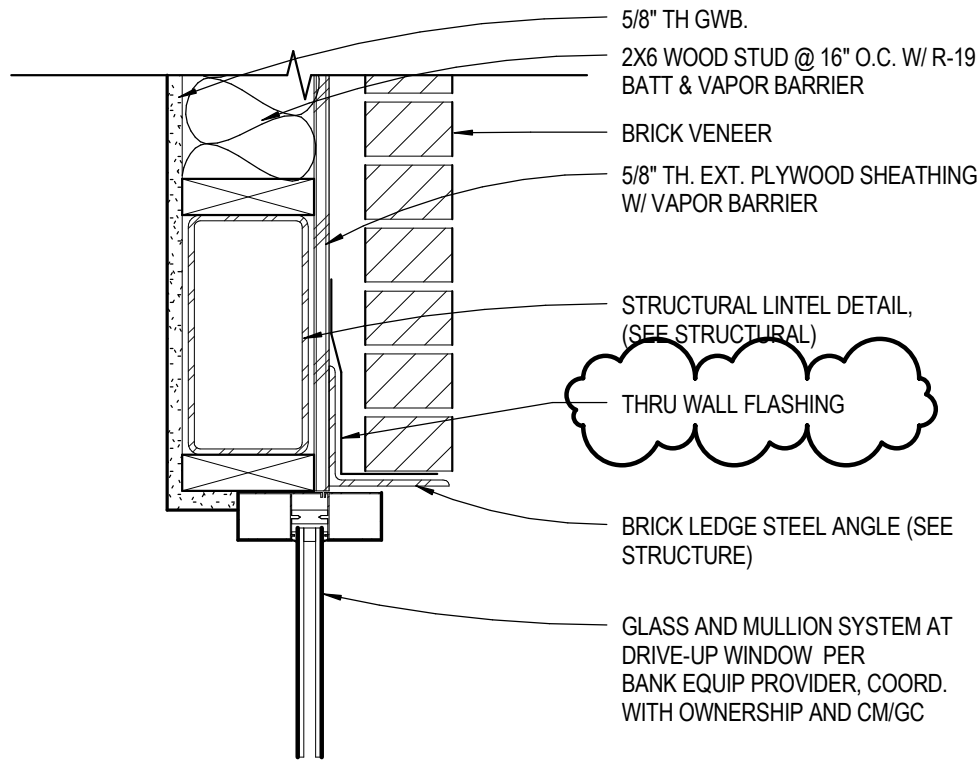
FAIL



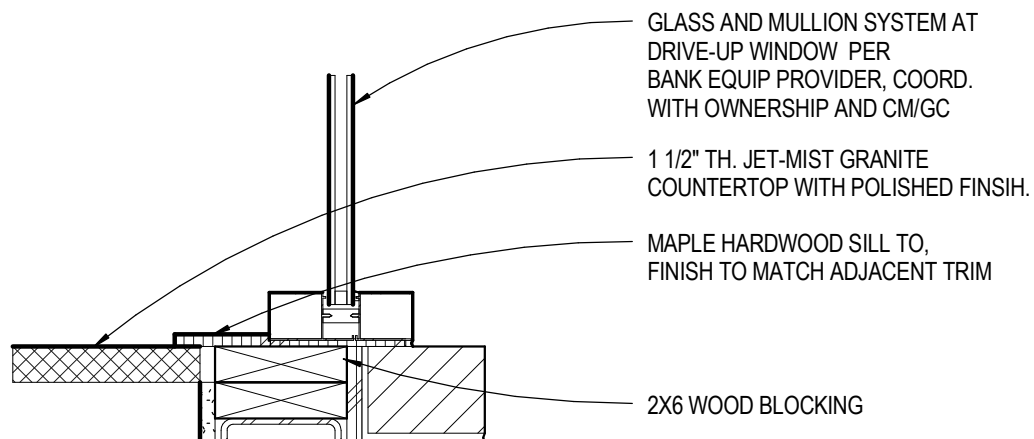
33 TYP. DETAIL AT WINDOW HEAD
 A7.2 SCALE: 1 1/2" = 1'-0"



24 TYP WALL SECTION - DETAIL AT WALL BASE
 A7.2 SCALE: 1 1/2" = 1'-0"



34 DETAIL AT HEAD OF DRIVE UP WINDOW
 A7.2 SCALE: 1 1/2" = 1'-0"





1015 E. CLOUD ST.
SALINA, KS 67401

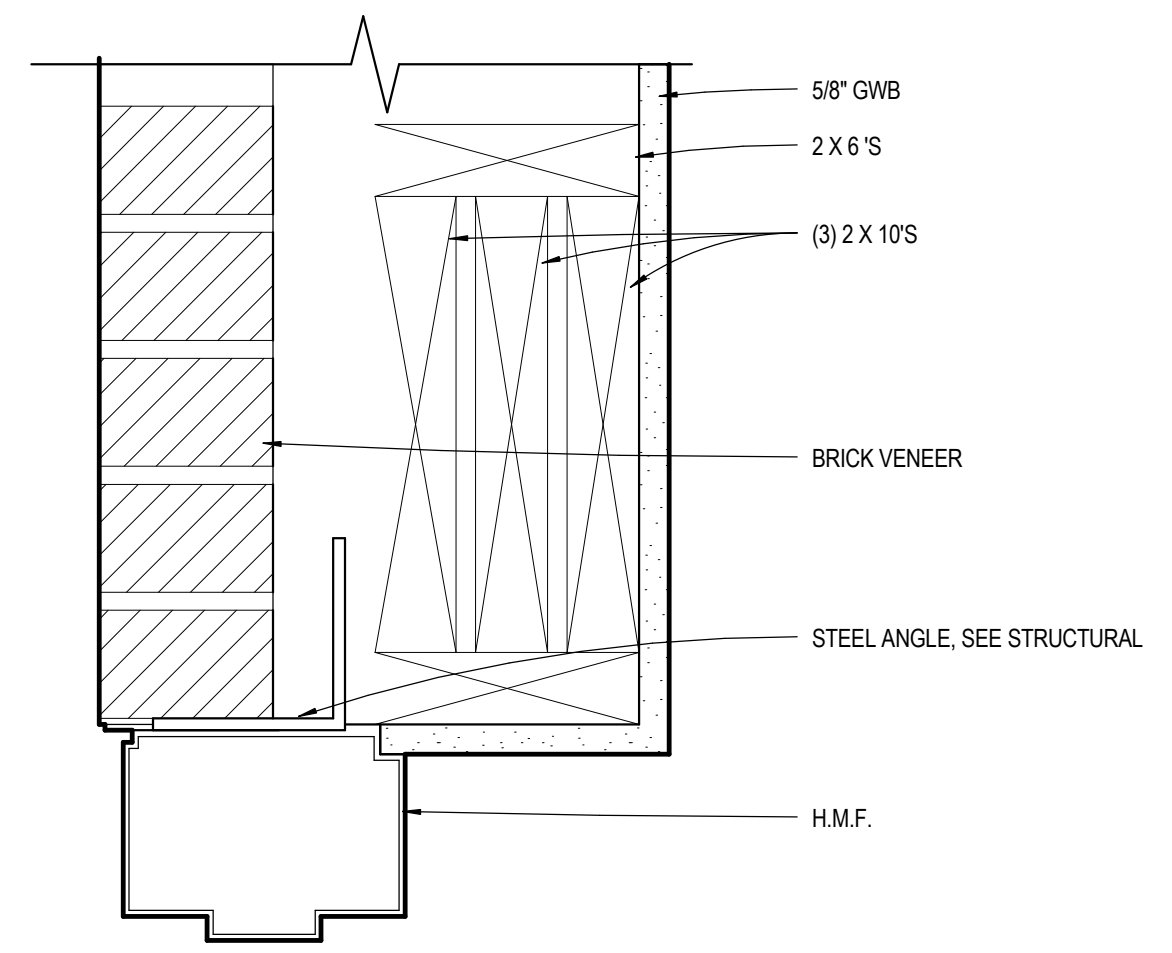
DOOR AND FRAME SCHEDULE
EXCHANGE BANK
SALINA, KS BRANCH

A9.1
12-16105-00
8/18/16
Revision
ADD 1 9/16 10/26

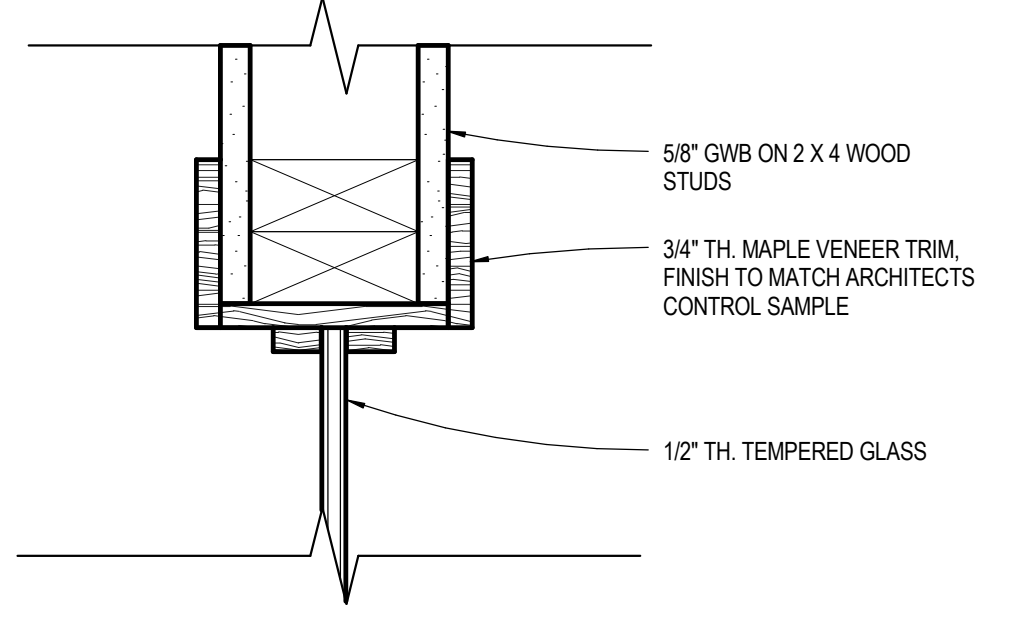
DOOR AND WINDOW FRAME SCHEDULE GENERAL NOTES

- ALL HOLLOW METAL FRAMES SHALL BE GROUTED SOLID.
- INSTALL EXTERIOR FRAMES WITH 1/4" SHIM AND JOINT SEALANT AROUND PERIMETER OF FRAME.
- MASONRY LINTELS AND STEEL LINTELS ARE INDICATED ON STRUCTURAL DRAWINGS.
- GLASS TYPES FOR DOORS ARE INDICATED IN NOTES COLLUMNS OF DOOR AND FRAME SCHEDULE OR IN SPECIFICATIONS. GLASS TYPES FOR FRAMES ARE INDICATED ON FRAME ELEVATIONS OR IN SPECIFICATIONS.
- EXTERIOR WINDOW FRAME TYPES ARE INDICATED ON FLOOR PLAN WITH HEXAGON SYMBOL.
- FRAME MANUFACTURER SHALL COORDINATE LOCATIONS OF CONCEALED CONDUIT AND LINES REQUIRED FOR SECURITY SYSTEM HARDWARE PRIOR TO MANUFACTURING OF HOLLOW METAL FRAMES AND COORDINATE WITH SECURITY HARDWARE AND DEVICES.
- PROVIDE HEAD RECEIVERS AT ALUMINUM STOREFRONTS AND CURTAIN WALLS AS REQUIRED FOR FRAME AND STRUCTURAL DEFLECTION.
- SEE SPECIFICATIONS 08100 HARDWARE FOR HARDWARE SET NOTED IN DOOR SCHEDULE.

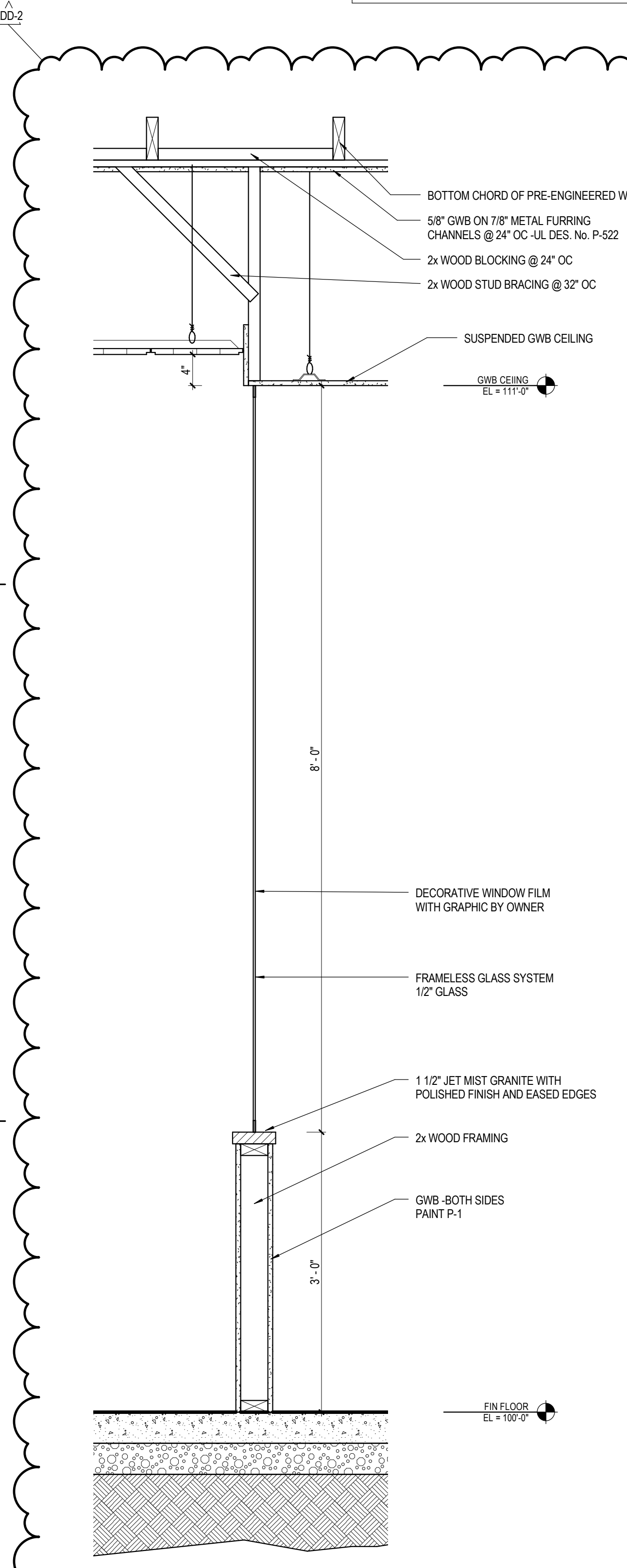
NUMBER	NO. OF PANELS	DOOR PANEL				FRAME				DETAILS				COMMENTS		
		WIDTH	HEIGHT	THICKNESS	MATERIAL	GLAZING	TYPE	DEPTH	MATERIAL	TYPE	FIRE RATING	HEAD	JAMB LEFT		JAMB RIGHT	SILL
001	1	3'-0"	7'-0"	1 3/4"	WD		A	5 3/4"	HM	1		S2A9.1	S1A9.1	S1A9.1	-	
002	1	3'-0"	7'-0"	1 3/4"	WD		A	5 3/4"	HM	1		S2A9.1	S1A9.1	S1A9.1	-	
101	2	3'-0"	7'-4"	1 3/4"	Glass		D	0"	ALUM		ADD-2	36A9.2	26A9.2	26A9.2	15A9.2	
101A							D	0"	ALUM			36A9.2	26A9.2	26A9.2	15A9.2	
105	1	3'-0"	8'-0"	2 1/4"	WD		B	5 3/4"	WD	3		S2A9.1	S1A9.1	41A9.1	32A9.1	
106	1	3'-0"	8'-0"	1 3/4"	WD		C	5 3/4"	WD	5		S2A9.1	S1A9.1	S1A9.1	-	
108	1	3'-0"	8'-0"	1 3/4"	WD		A	6 1/4"	WD	5		S2A9.1	S1A9.1	S1A9.1	-	
108A	1	2'-0"	7'-0"	1 3/4"	WD		A	6 1/4"	WD	1		S2A9.1	S1A9.1	S1A9.1	-	
108B	1	3'-0"	7'-0"	1 3/4"	WD		A	6 1/4"	WD	1		S2A9.1	S1A9.1	S1A9.1	-	
111	1	3'-0"	8'-0"	1 3/4"	WD		A	6 1/4"	WD	5		S2A9.1	S1A9.1	S1A9.1	-	
112	1	3'-0"	7'-0"	1 3/4"	WD		A	6 1/4"	WD	1		S2A9.1	S1A9.1	S1A9.1	-	
114	1	3'-0"	8'-0"	1 3/4"	WD		A	6 1/4"	WD	5		S2A9.1	S1A9.1	S1A9.1	-	
116	1	3'-0"	8'-0"	1 3/4"	WD		A	6 1/4"	WD	5		S2A9.1	S1A9.1	S1A9.1	-	
119	1	3'-0"	8'-0"	1 3/4"	WD		A	6 1/4"	WD	5		S2A9.1	S1A9.1	S1A9.1	-	
120	1	3'-0"	7'-0"	1 3/4"	WD		A	5 3/4"	HM	6		S2A9.1	S1A9.1	S1A9.1	-	
121	1	3'-0"	7'-0"	1 3/4"	HM		E	5 7/8"	HM	6	45 MIN	21A9.1	31A9.1	31A9.1	-	
121A	1	3'-0"	7'-0"	1 3/4"	WD		A	5 3/4"	HM	6		S2A9.1	S1A9.1	S1A9.1	-	INSULATED, GALVANIZED
122	1	3'-0"	8'-0"	2 1/4"	WD		B	5 3/4"	WD	3		S2A9.1	S1A9.1	41A9.1	32A9.1	
123	1	3'-0"	8'-0"	2 1/4"	WD		B	5 3/4"	WD	3		S2A9.1	S1A9.1	41A9.1	32A9.1	
124	1	3'-0"	8'-0"	2 1/4"	WD		B	5 3/4"	WD	3		S2A9.1	S1A9.1	41A9.1	32A9.1	
125	1	3'-0"	8'-0"	2 1/4"	WD		B	5 3/4"	WD	2		S2A9.1	S1A9.1	41A9.1	32A9.1	
126	1	3'-0"	8'-0"	2 1/4"	WD		B	5 3/4"	WD	2		S2A9.1	S1A9.1	41A9.1	32A9.1	
127	2	3'-0"	7'-4"	1 3/4"	Glass		D	0"	ALUM		ADD-2	36A9.2	26A9.2	26A9.2	15A9.2	
127A							D	0"	ALUM			36A9.2	26A9.2	26A9.2	15A9.2	
128	1	3'-0"	8'-0"	2 1/4"	WD		B	5 3/4"	WD	2		S2A9.1	S1A9.1	41A9.1	32A9.1	
129	1	3'-0"	8'-0"	1 3/4"	WD		C	6 1/4"	WD	5		S2A9.1	S1A9.1	S1A9.1	-	
130	1	3'-0"	7'-0"	1 3/4"	HM		E	5 7/8"	HM	6		21A9.1	S1A9.1	31A9.1	-	INSULATED, GALVANIZED
130A	1	3'-0"	7'-0"	1 3/4"	HM		E	5 7/8"	HM	6		21A9.1	S1A9.1	31A9.1	-	INSULATED, GALVANIZED
130B	2	3'-0"	7'-0"	1 3/4"	Glass		D	4 1/2"	ALUM	8		36A9.2	26A9.2	26A9.2	15A9.2	
130C	2	3'-0"	7'-0"	1 3/4"	Glass		D	4 1/2"	ALUM	8		36A9.2	26A9.2	26A9.2	15A9.2	



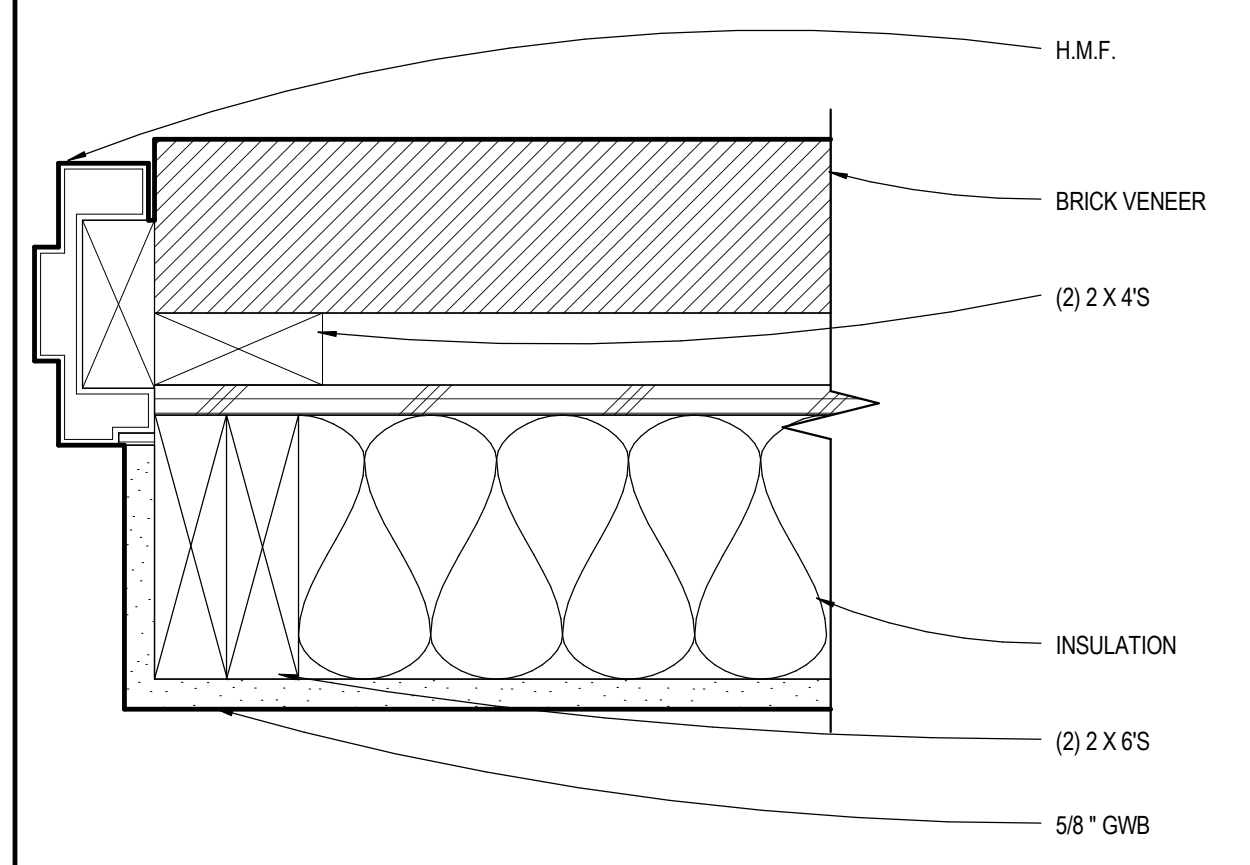
21 DETAIL AT HM DOOR HEAD
SCALE: 3" = 1'-0"



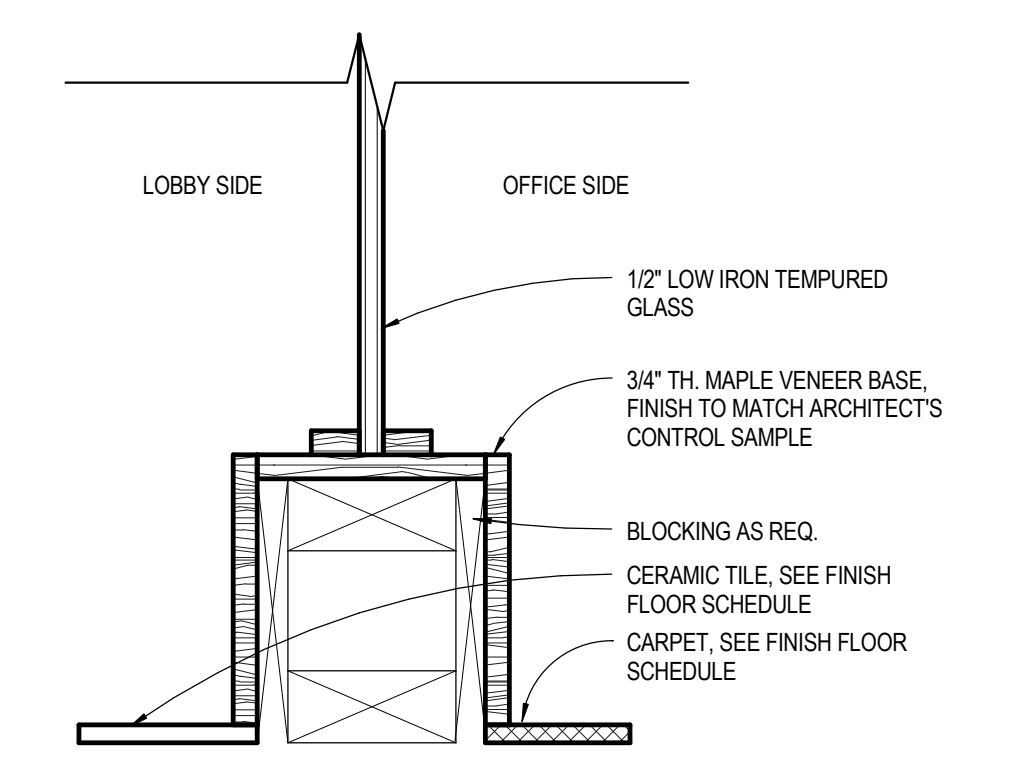
22 DETAIL AT SIDELIGHT HEAD
SCALE: 3" = 1'-0"



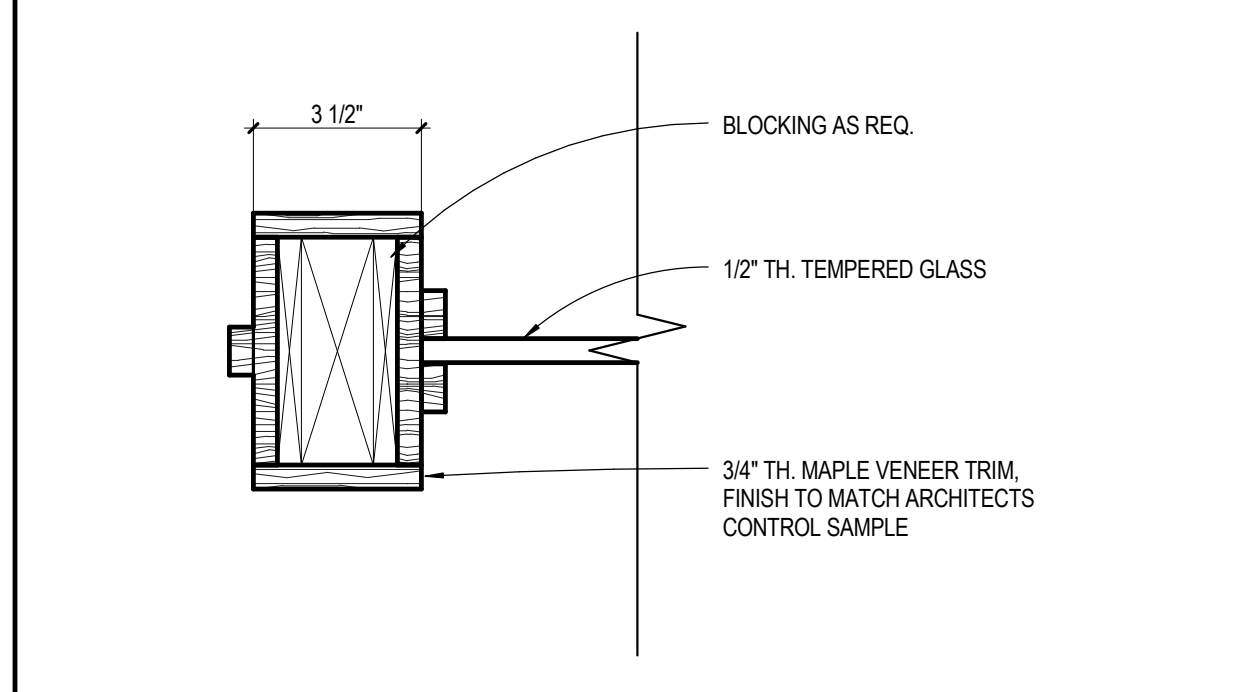
43 INTERIOR SECTION DETAIL
SCALE: 1" = 1'-0"



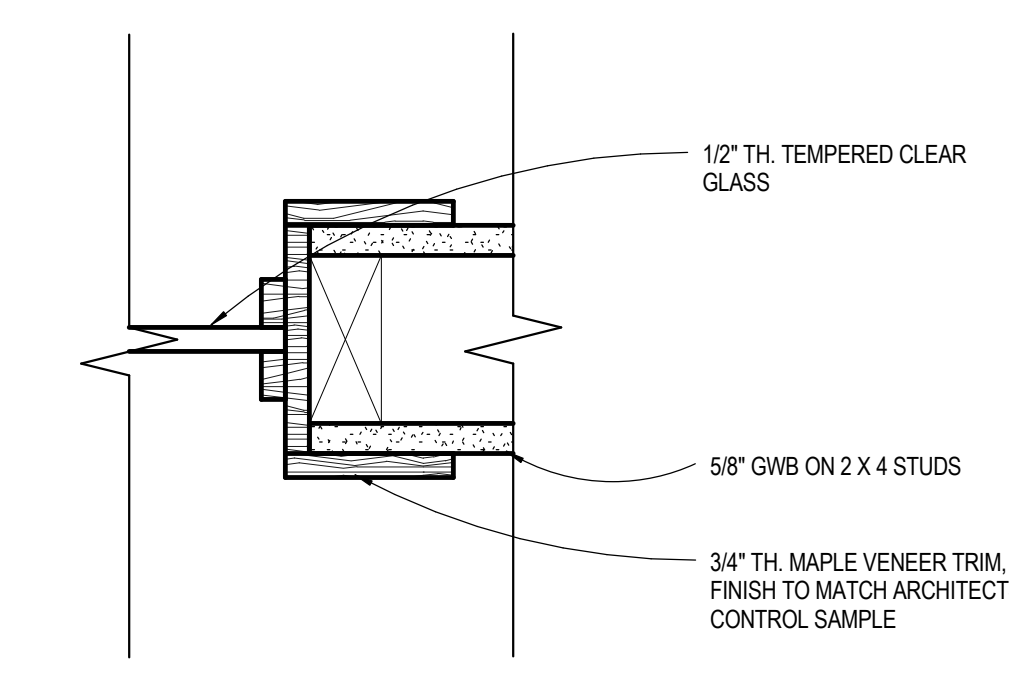
31 DETAIL AT HM DOOR JAMB
SCALE: 3" = 1'-0"



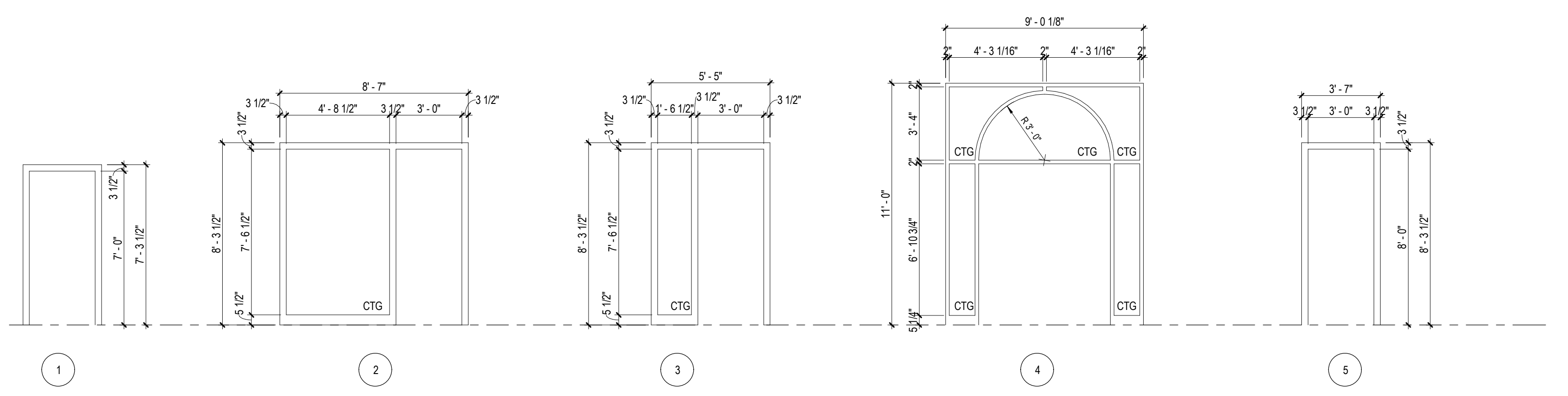
32 DETAIL AT SIDELIGHT BASE
SCALE: 3" = 1'-0"



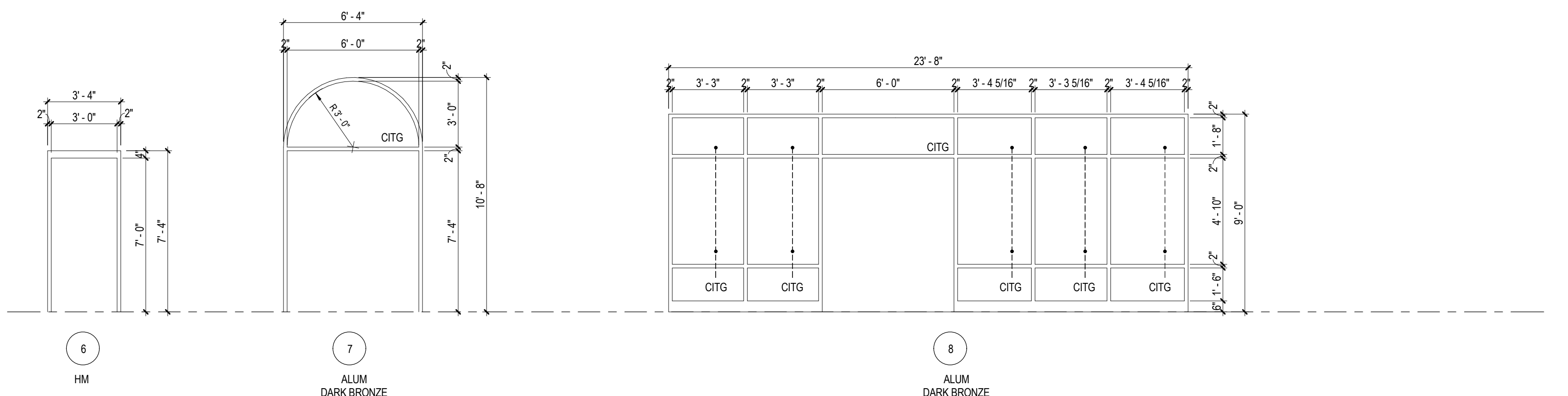
41 DETAIL AT SIDELIGHT JAMB
SCALE: 3" = 1'-0"



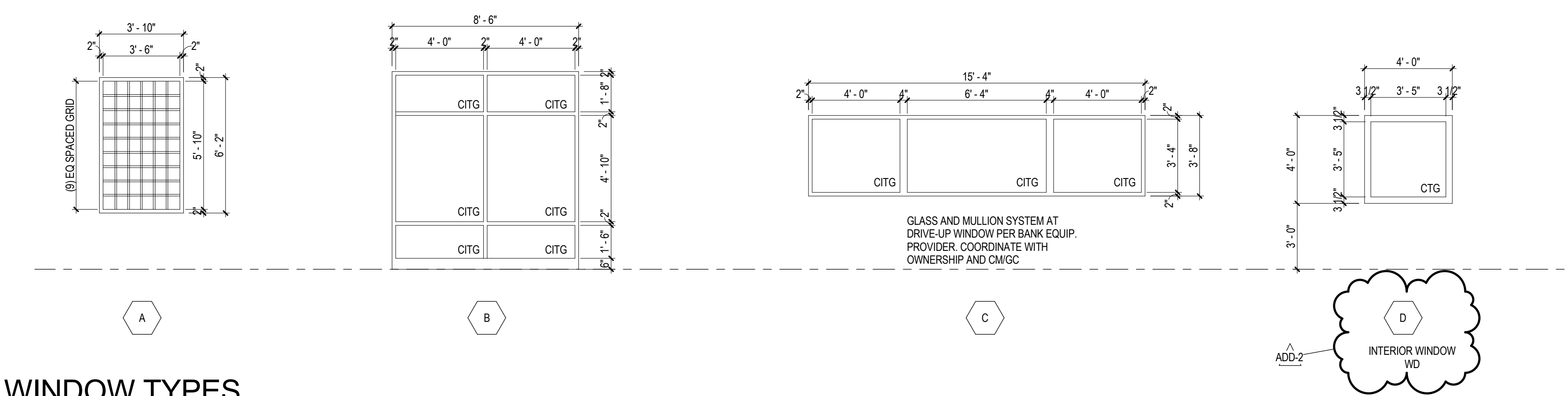
42 DETAIL AT SIDELIGHT JAMB
SCALE: 3" = 1'-0"



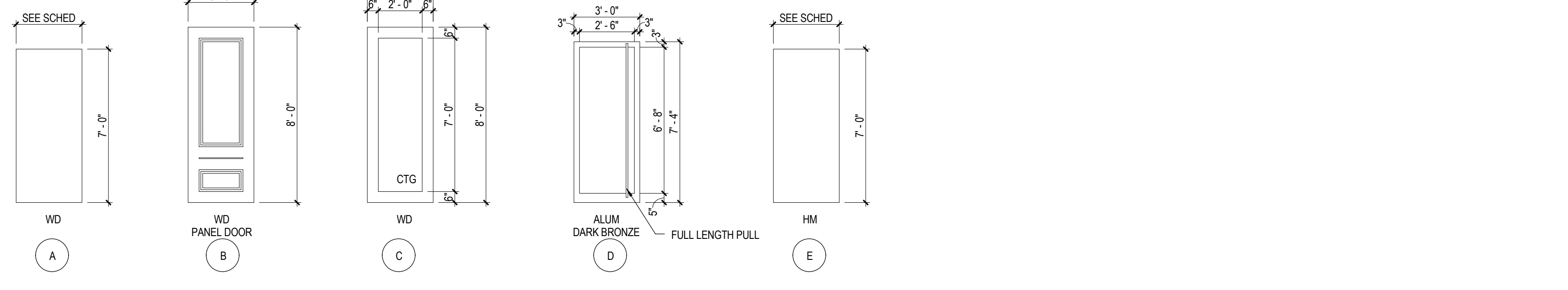
INTERIOR FRAME ELEVATIONS
SCALE: 1/4" = 1'-0"



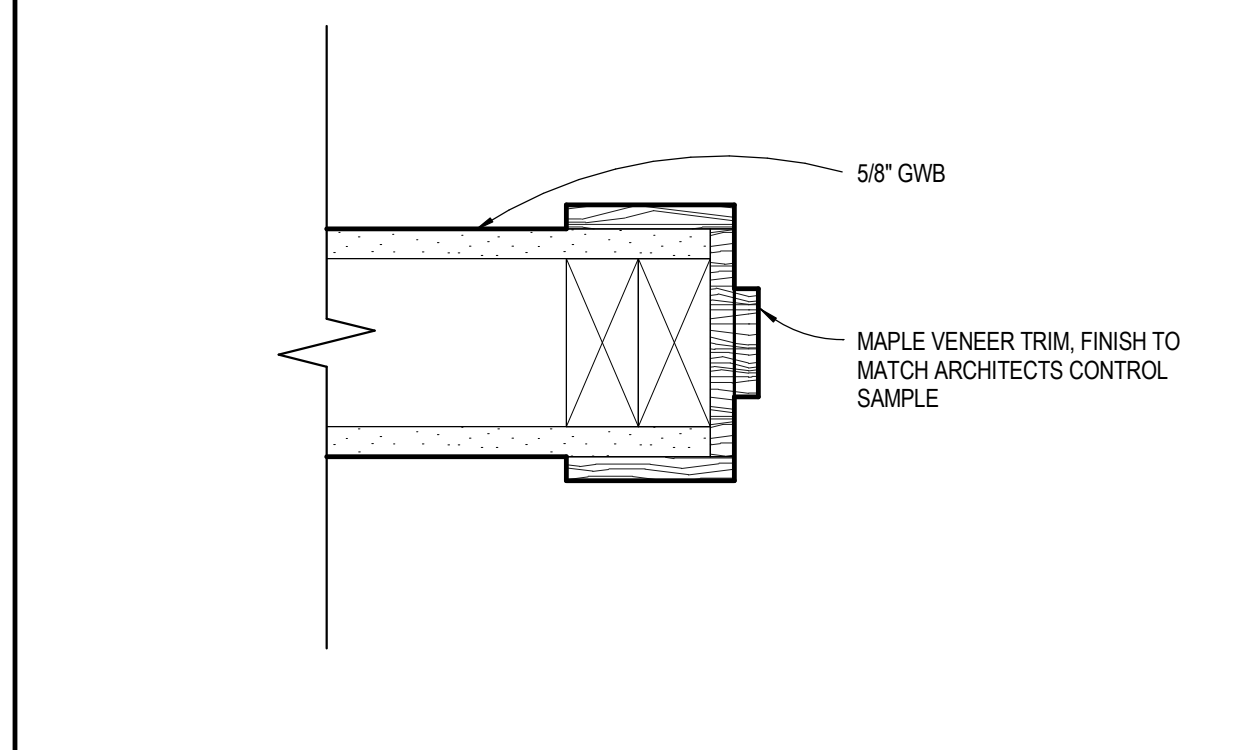
EXTERIOR FRAME ELEVATIONS
SCALE: 1/4" = 1'-0"



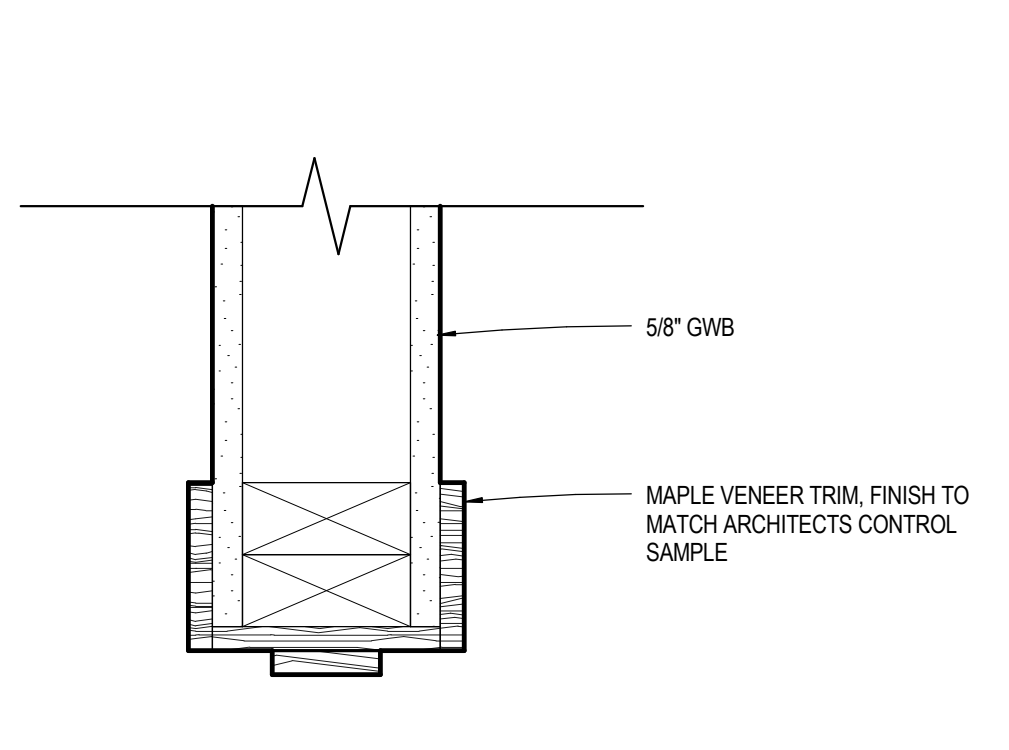
WINDOW TYPES
SCALE: 1/4" = 1'-0"



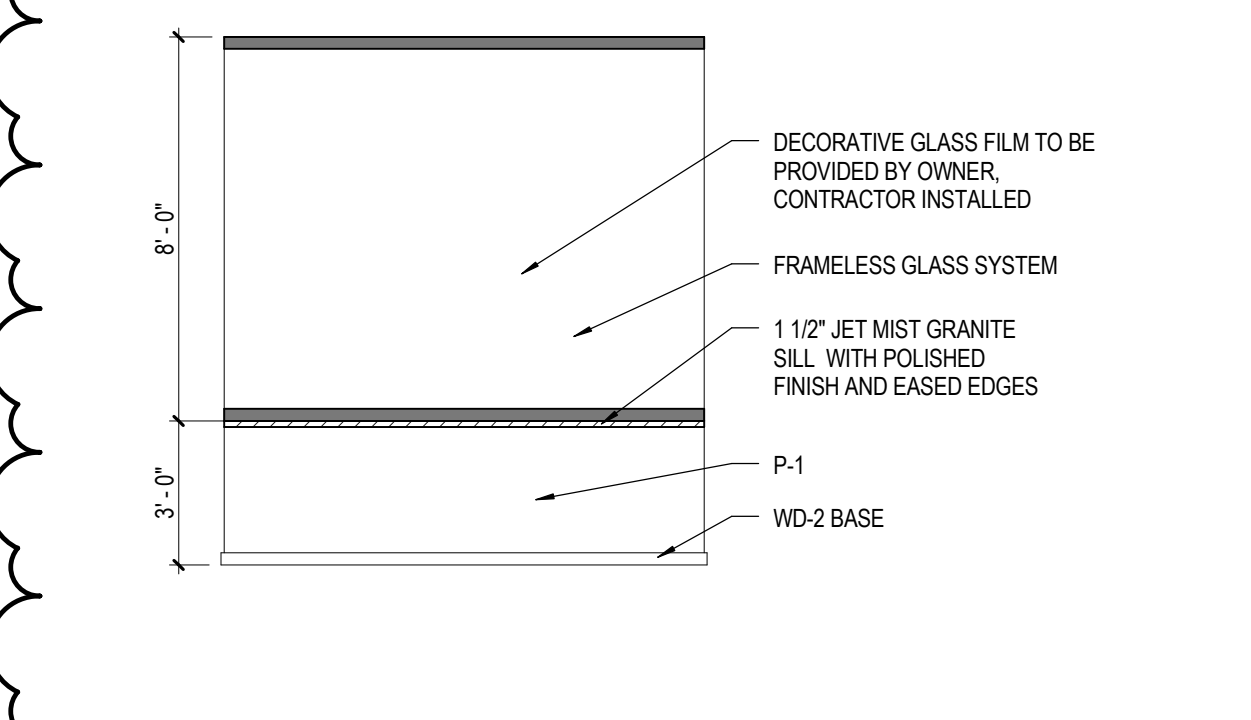
DOOR TYPES
SCALE: 1/4" = 1'-0"



51 DETAIL AT WD DOOR JAMB
SCALE: 3" = 1'-0"

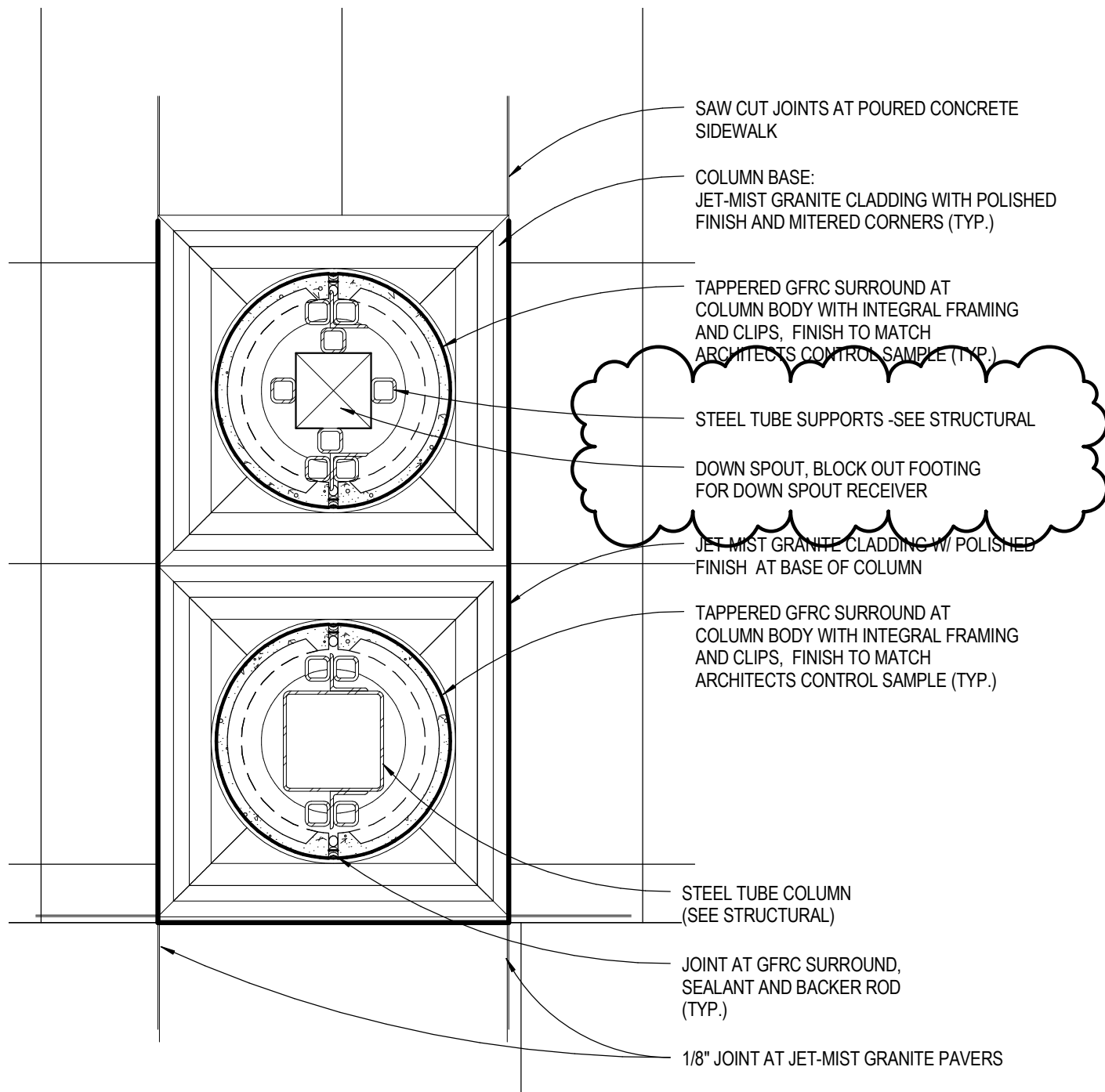


52 DETAIL AT WD DOOR HEAD
SCALE: 3" = 1'-0"



53 FRAMELESS GLASS WALL ELEVATION
SCALE: 1/4" = 1'-0"

C:\Revit\2.16105-00_AR_2016_Central_mngl\g1.rvt
9/21/2016 2:23:55 AM



25 PLAN DETAIL AT TYPICAL COLUMN
 A10.1 SCALE: 1" = 1'-0"

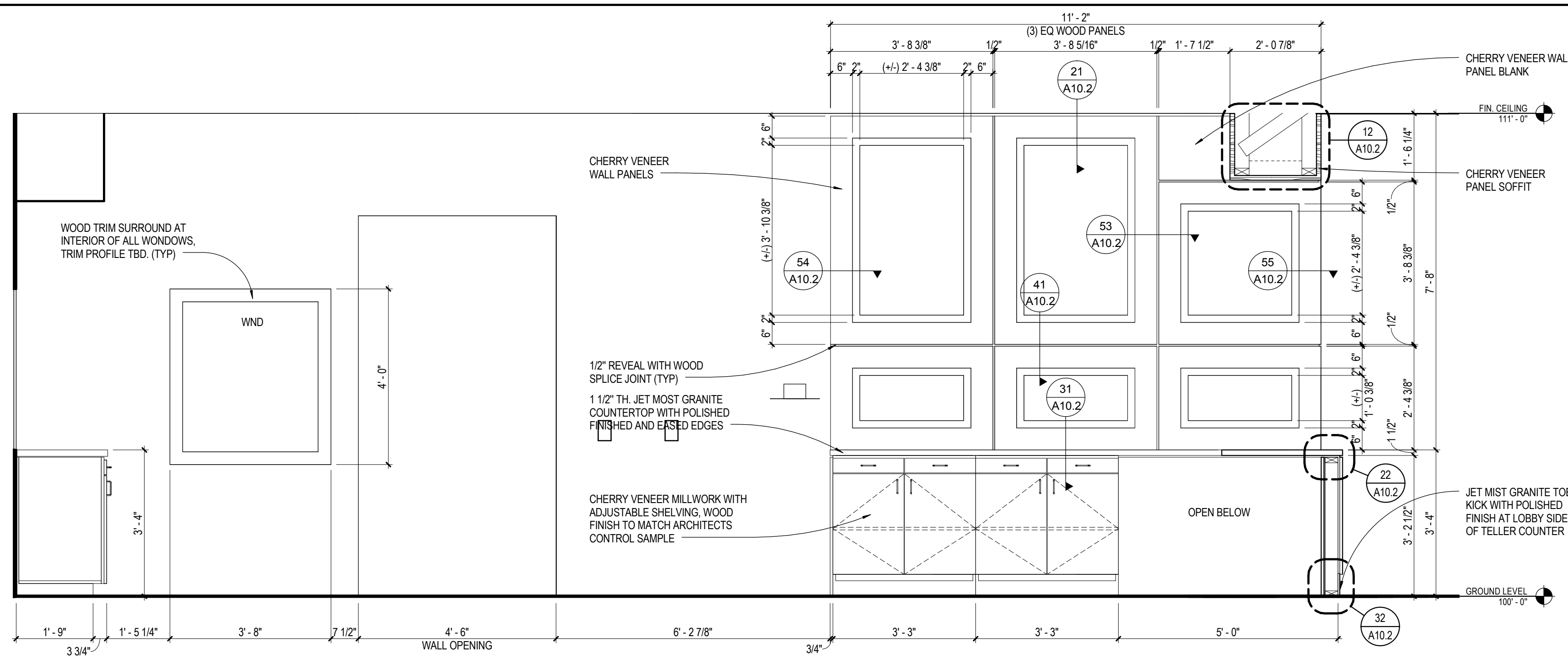


1015 E. CLOUD ST.
SALINA, KS 67401

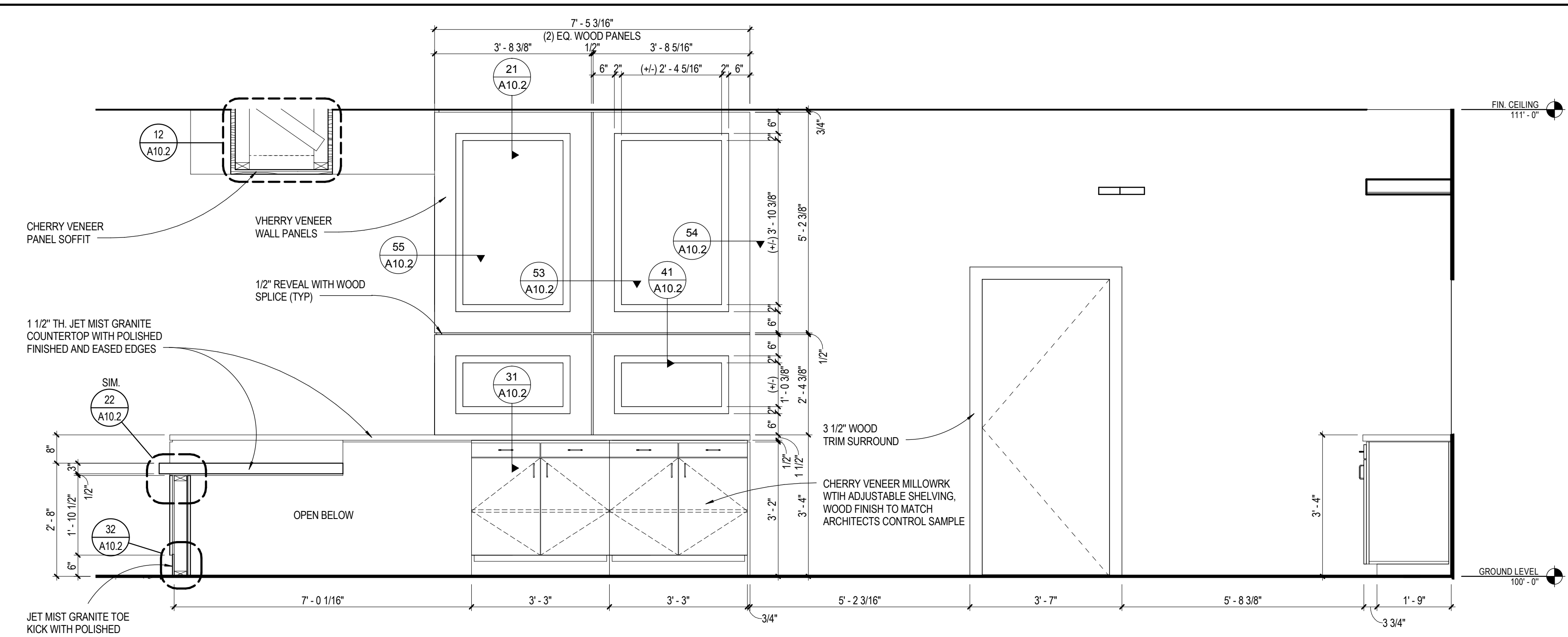
CASEWORK ELEVATIONS EXCHANGE BANK SALINA, KS BRANCH

A11.1
12-16-05-00
8/18/16
Revised
ADD 10/16 10/20/16

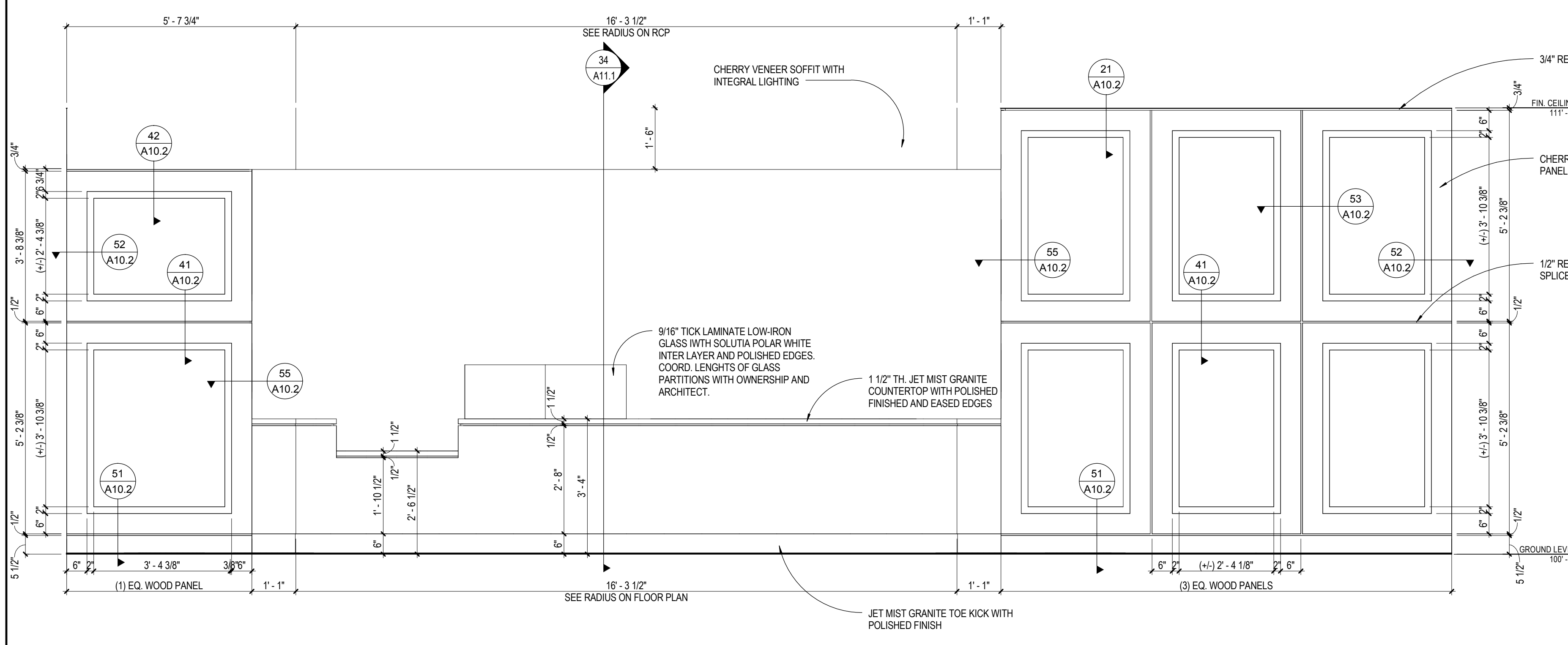
DLR Group
Architecture Engineering Planning Interiors
© 2016, DLR Group, Inc. All rights reserved.



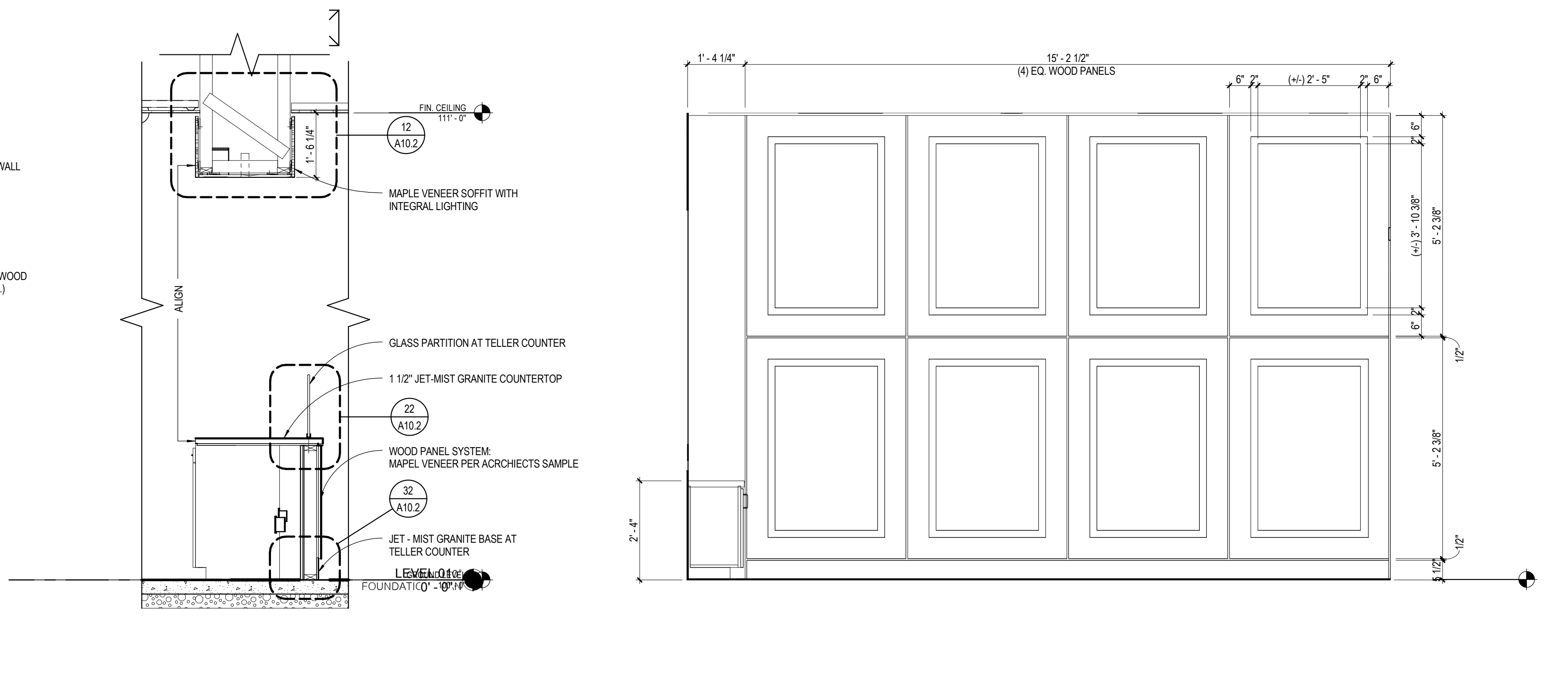
21 ELEVATION AT NORTH TELLER WALL
A11.1 SCALE: 1/2" = 1'-0"



24 ELEVATION AT SOUTH TELLER WALL
A11.1 SCALE: 1/2" = 1'-0"



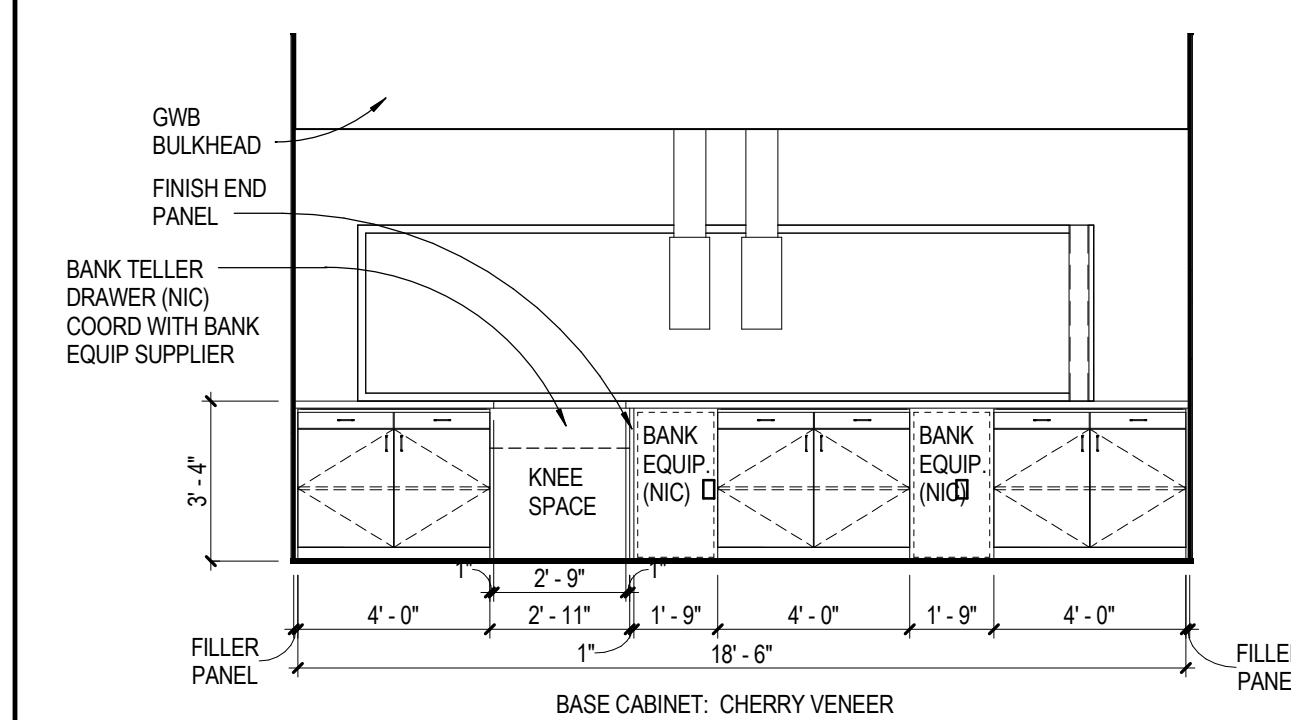
31 ELEVATION AT TELLER COUNTER
A11.1 SCALE: 1/2" = 1'-0"



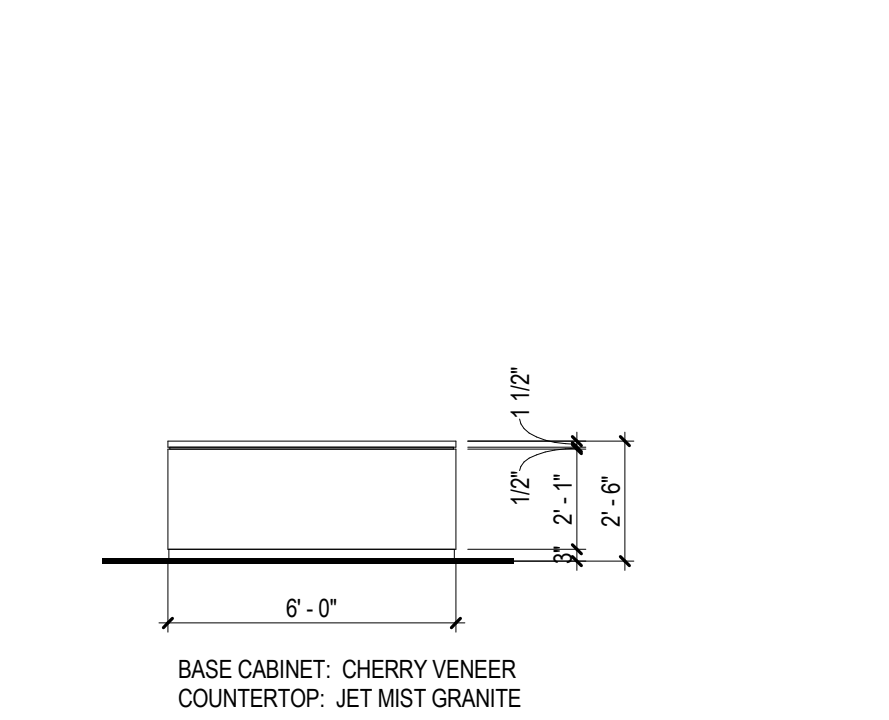
34 SECTION AT TELLER COUNTER
A11.1 SCALE: 1/2" = 1'-0"

35 ELEVATION AT CONFERENCE ROOM WOOD WORK
A11.1 SCALE: 1/2" = 1'-0"

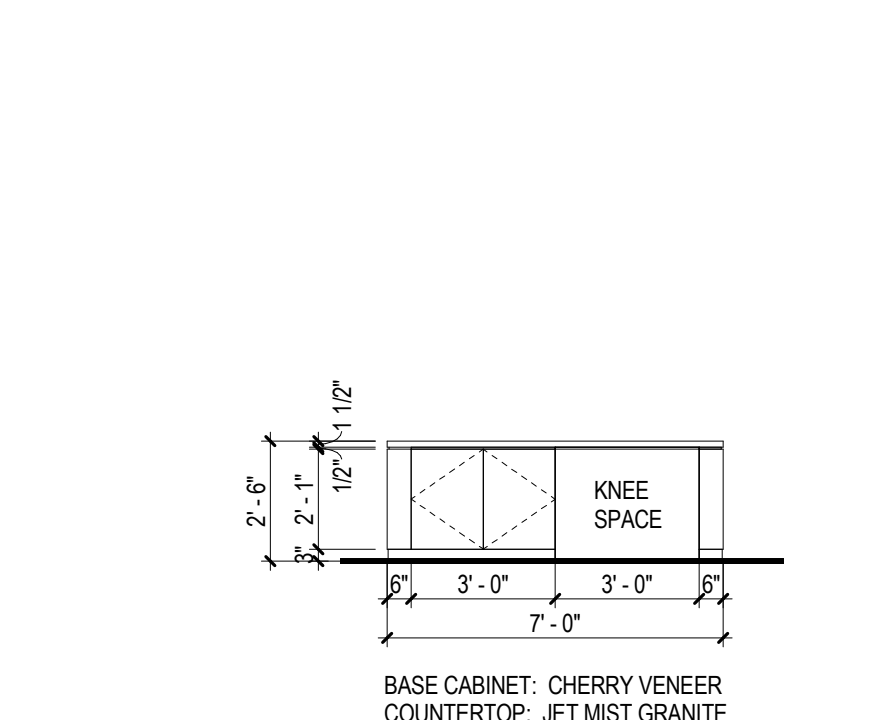
- CASEWORK AND MILLWORK GENERAL NOTES**
- CASEWORK AND MILLWORK GENERAL NOTES APPLY TO ALL CASEWORK AND MILLWORK SHEETS.
 - ELEVATIONS DENOTED AS MILLWORK ARE SPECIFIED UNDER DIVISION 06.
 - BASE AND TALL STORAGE CABINETS: 24 INCHES DEEP, UNLESS NOTED OTHERWISE.
 - WALL CABINETS: 14 INCHES DEEP, UNLESS NOTED OTHERWISE.
 - TALL STORAGE UNITS TO BE 24 INCHES DEEP, UNLESS NOTED OTHERWISE.
 - PROVIDE ADJUSTABLE SHELVING IN CASEWORK, UNLESS NOTED OTHERWISE.
 - WHERE ELECTRICAL DEVICES ARE LOCATED IN CASEWORK, CASEWORK CONTRACTOR SHALL PROVIDE FINISHED OPENINGS. COORDINATE LOCATION AND QUANTITY WITH ELECTRICAL CONTRACTOR.
 - PROVIDE JOINT SEALANT AT PERIMETER JOINTS WHERE COUNTERTOPS, BACK AND SIDE SPLASHES, CASEWORK AND MILLWORK ADJUT WALLS.
 - FIELD VERIFY DIMENSIONS OF CABINET LOCATIONS IN BUILDING PRIOR TO FABRICATION.
 - PROVIDE LOCKS AT DOORS AND DRAWERS.
 - PROVIDE FINISHED ENDS AT ALL EXPOSED ENDS OF CASEWORK AND MILLWORK.
 - ALL EXPOSED SURFACES IN OPEN SHELVING SHALL BE PLASTIC LAMINATE COVERED.
 - TYPICAL PLASTIC LAMINATE DETAIL, SEE XXA0XX



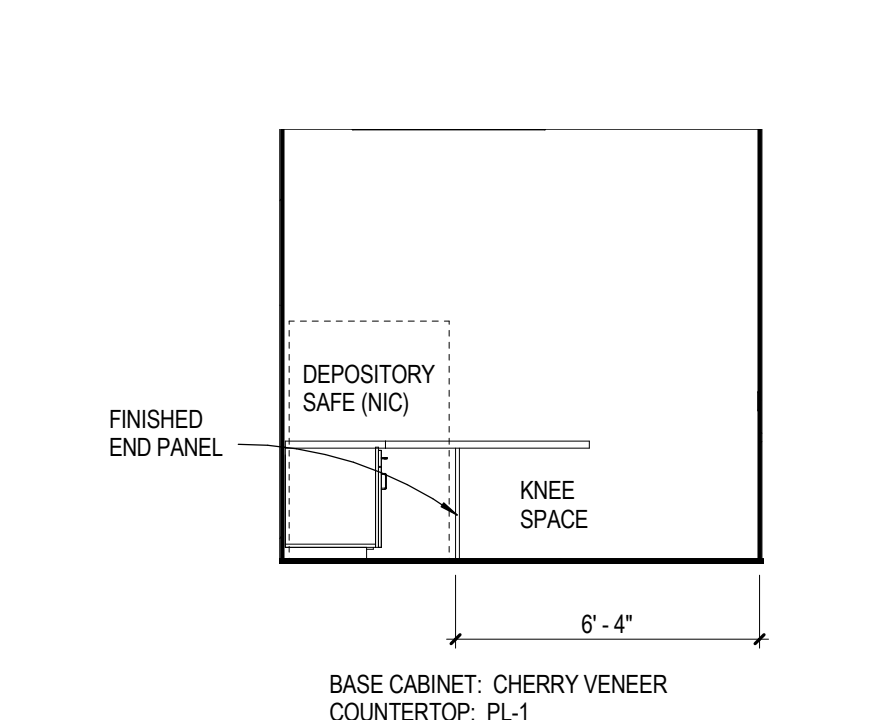
41 ELEVATION IN TELLER SPACE 107
A11.1 SCALE: 1/4" = 1'-0"



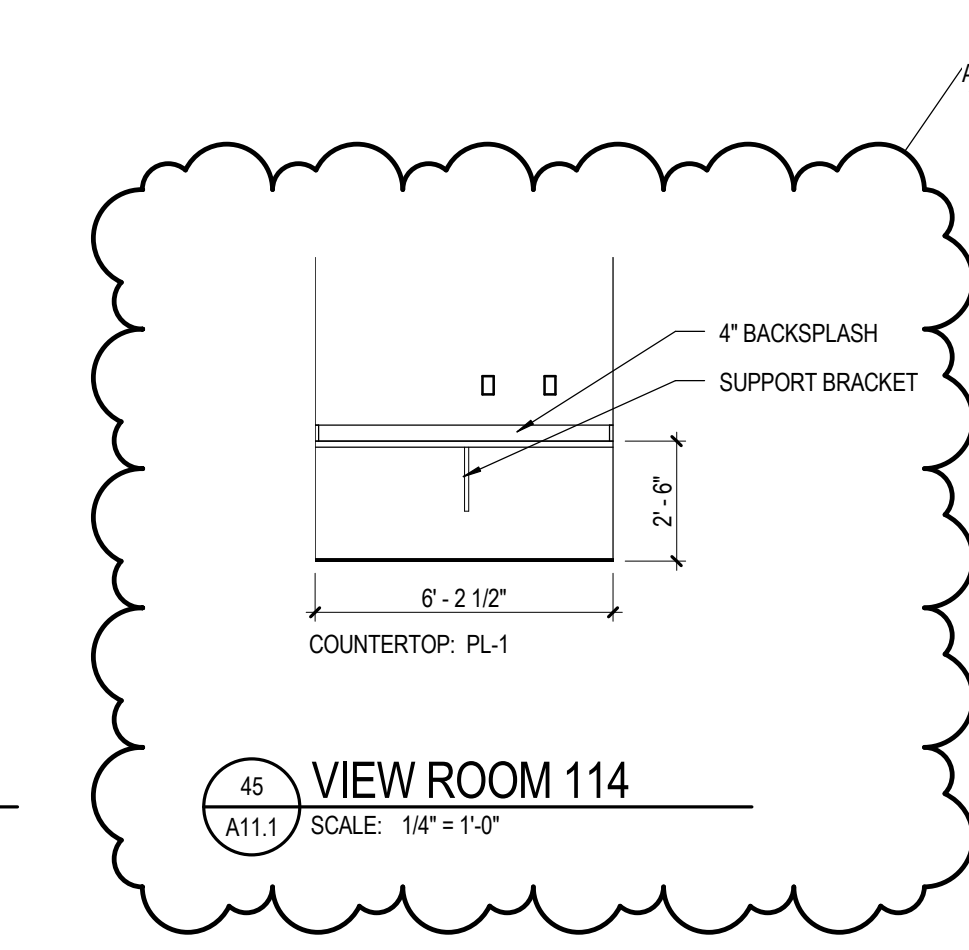
42 ELEVATION AT TELLER WORK ISLAND
A11.1 SCALE: 1/4" = 1'-0"



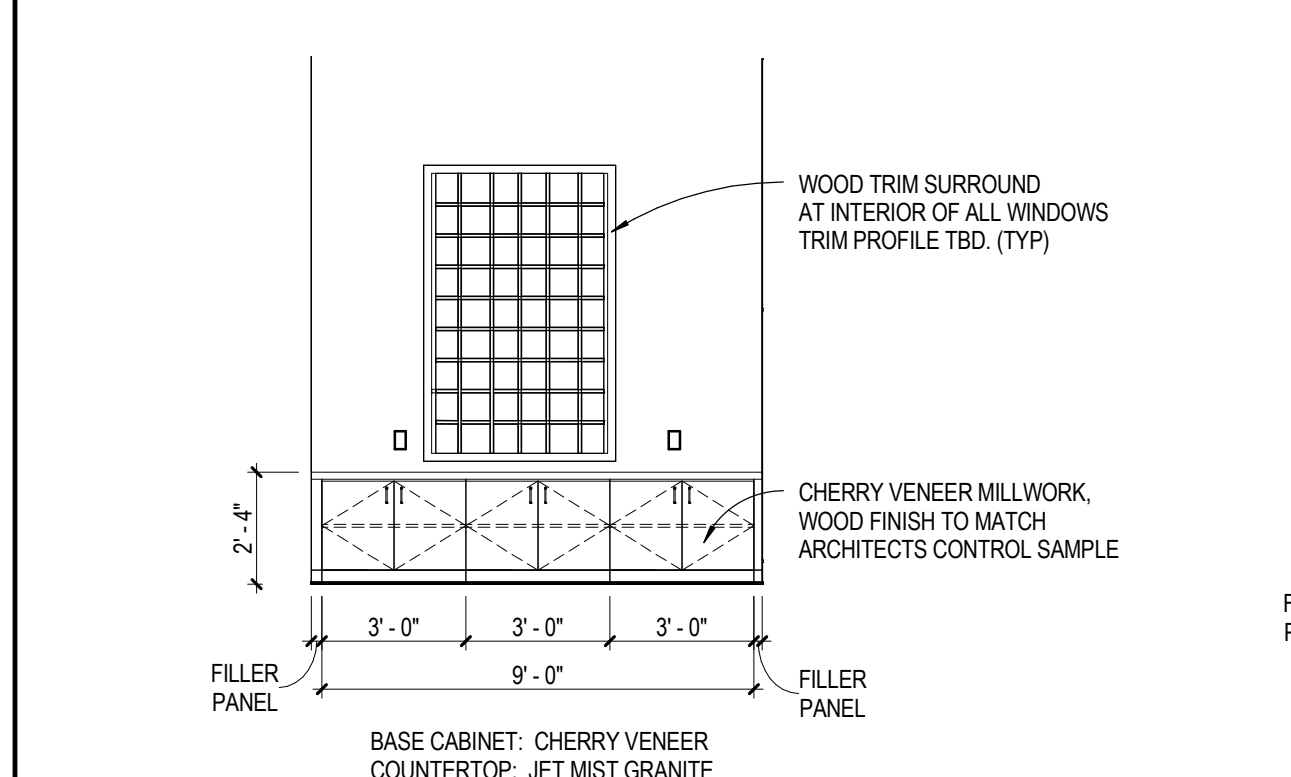
43 ELEVATION AT TELLER WORK ISLAND
A11.1 SCALE: 1/4" = 1'-0"



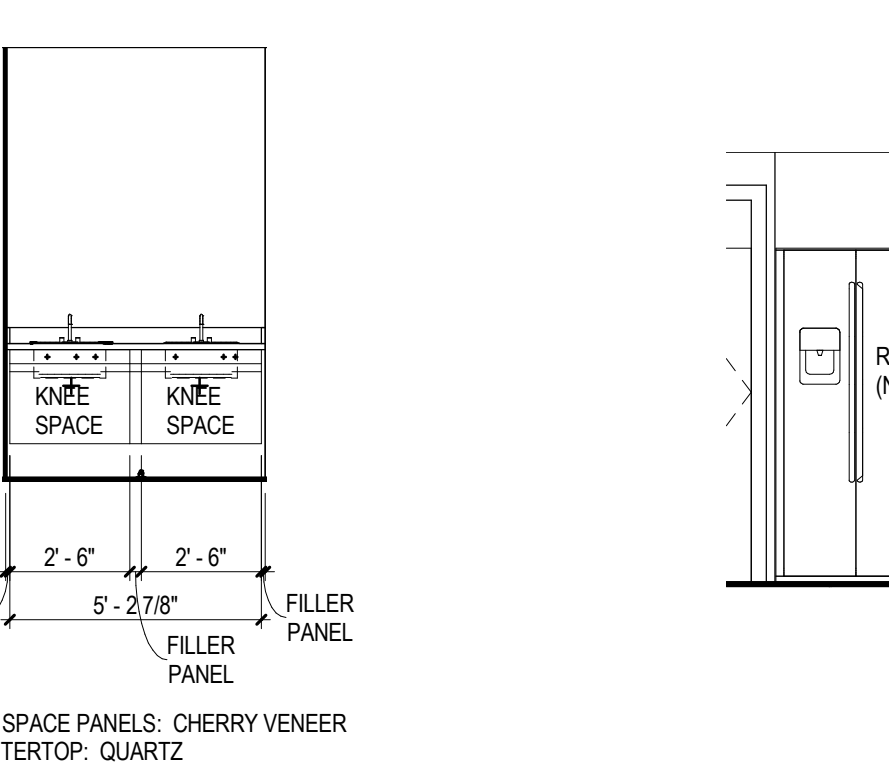
44 ELEVATION AT TELLER STORAGE 110
A11.1 SCALE: 1/4" = 1'-0"



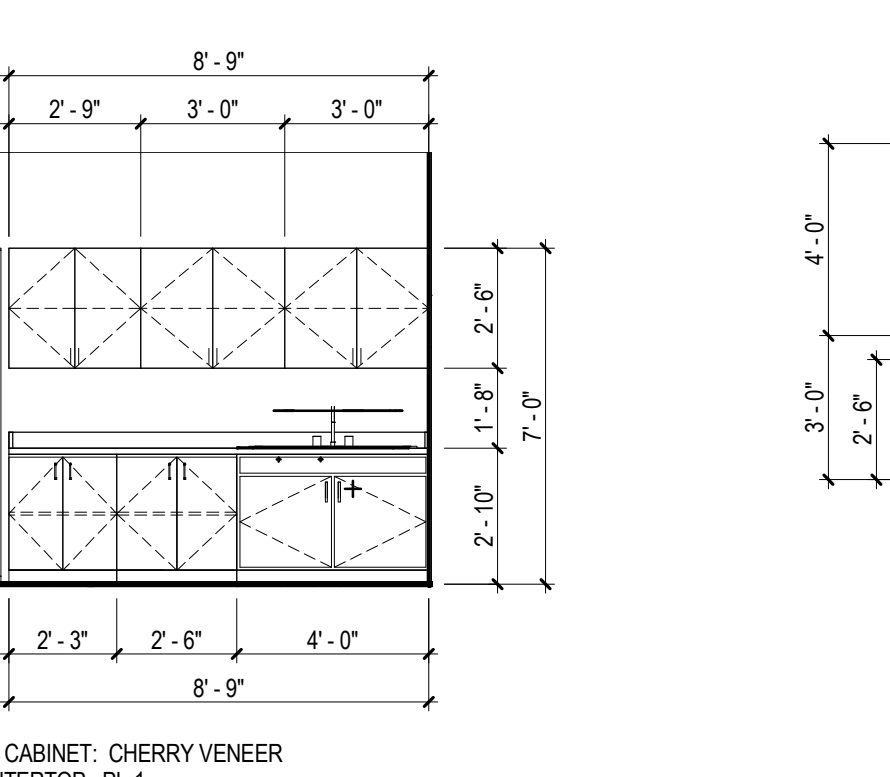
45 VIEW ROOM 114
A11.1 SCALE: 1/4" = 1'-0"



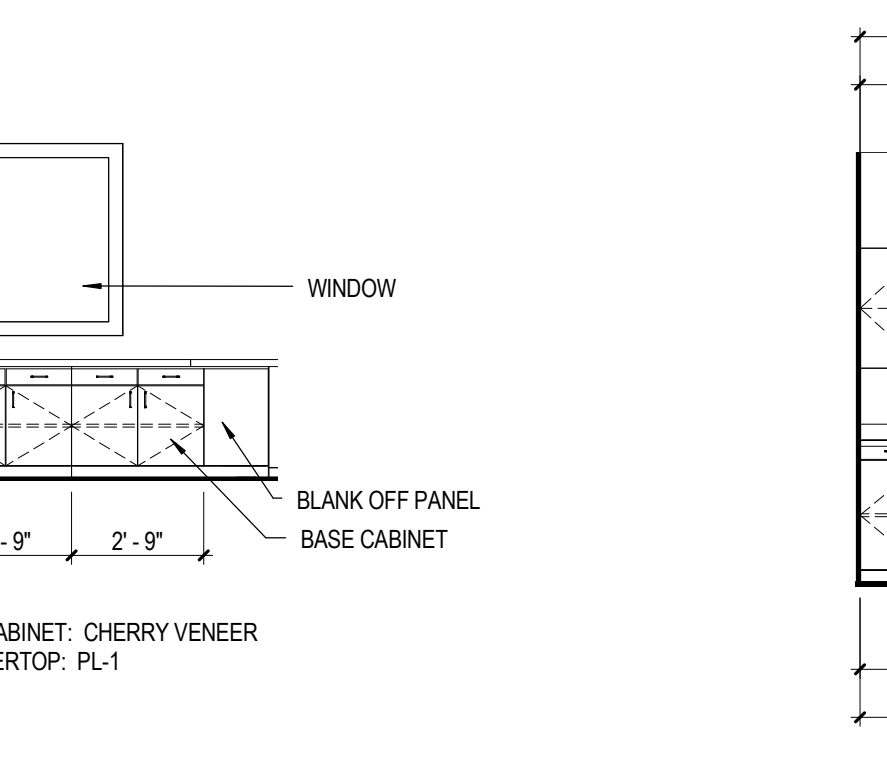
51 ELEVATION AT CONFERENCE ROOM 129
A11.1 SCALE: 1/4" = 1'-0"



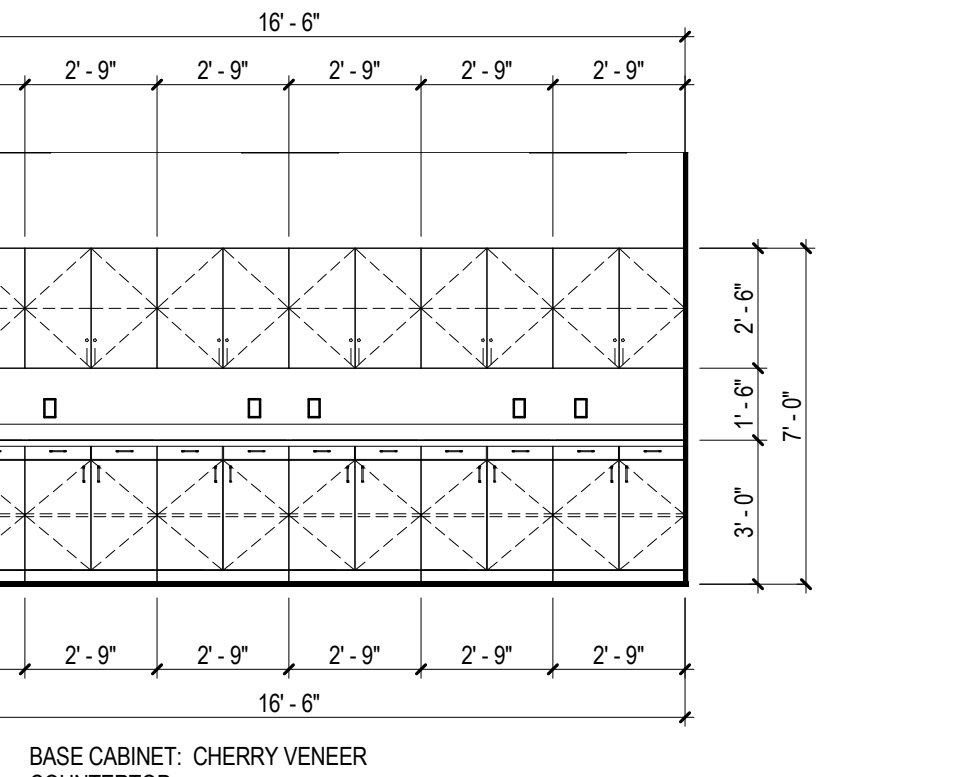
52 ELEVATION AT RESTROOMS
A11.1 SCALE: 1/4" = 1'-0"



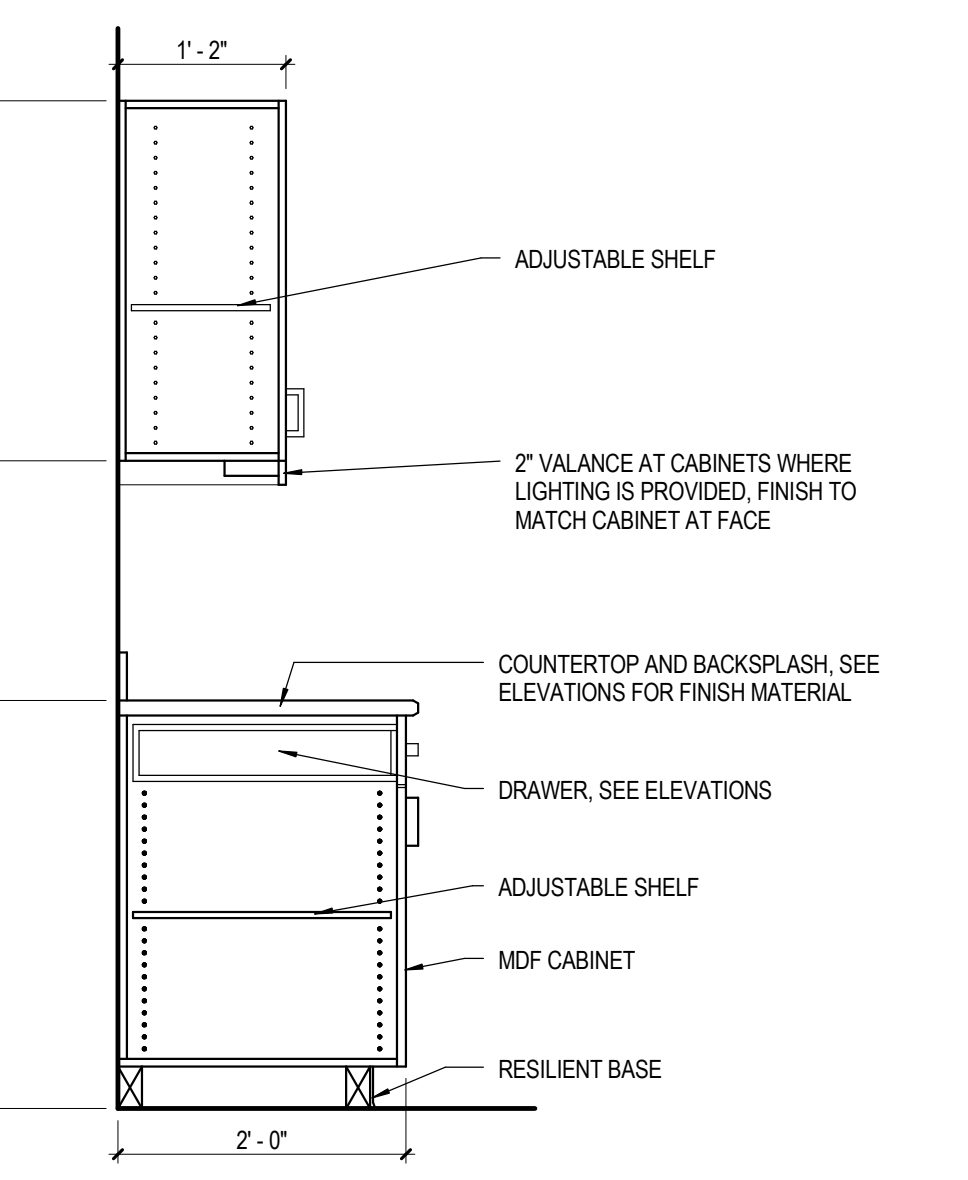
53 ELEVATION AT STAFF ROOM 108
A11.1 SCALE: 1/4" = 1'-0"



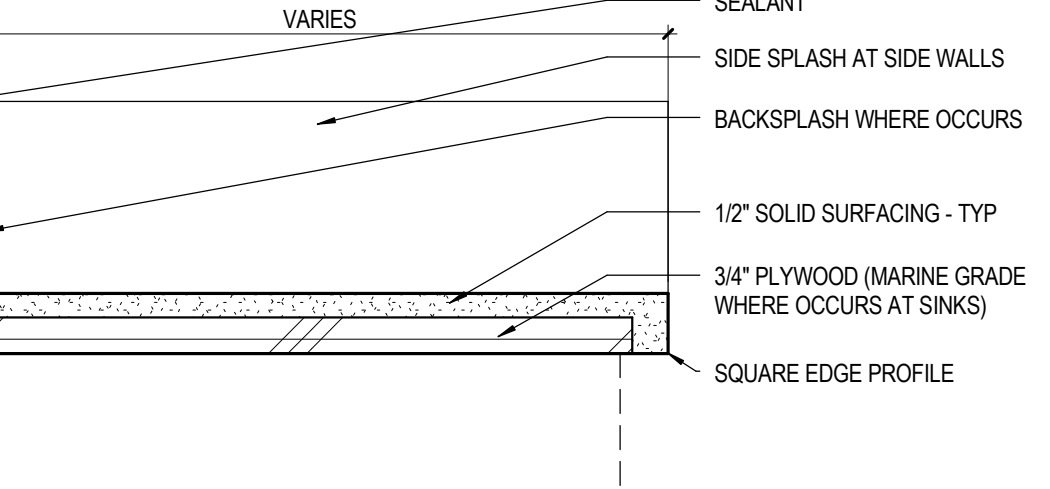
54 ELEVATION AT TELLER STORAGE 110
A11.1 SCALE: 1/4" = 1'-0"



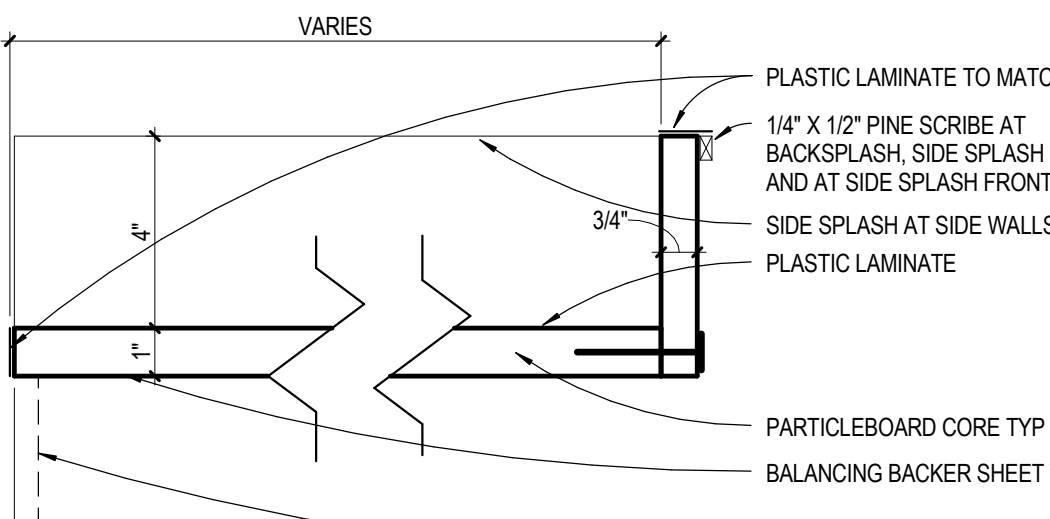
55 ELEVATION AT WORKROOM 111
A11.1 SCALE: 1/4" = 1'-0"



56 TYP. BASE CABINET W/ UPPER
A11.1 SCALE: 3/4" = 1'-0"

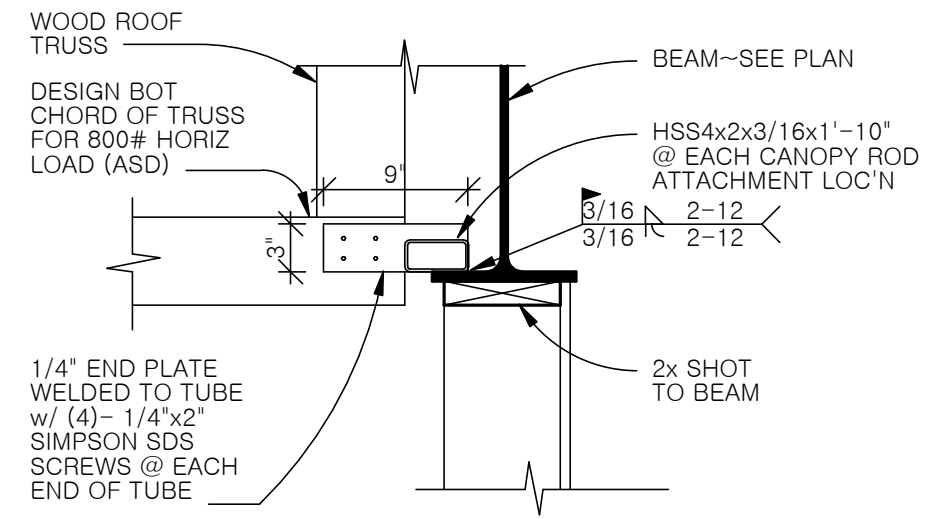


57 SOLID SURFACE COUNTERTOP DETAILS 1
A11.1 SCALE: 3/4" = 1'-0"



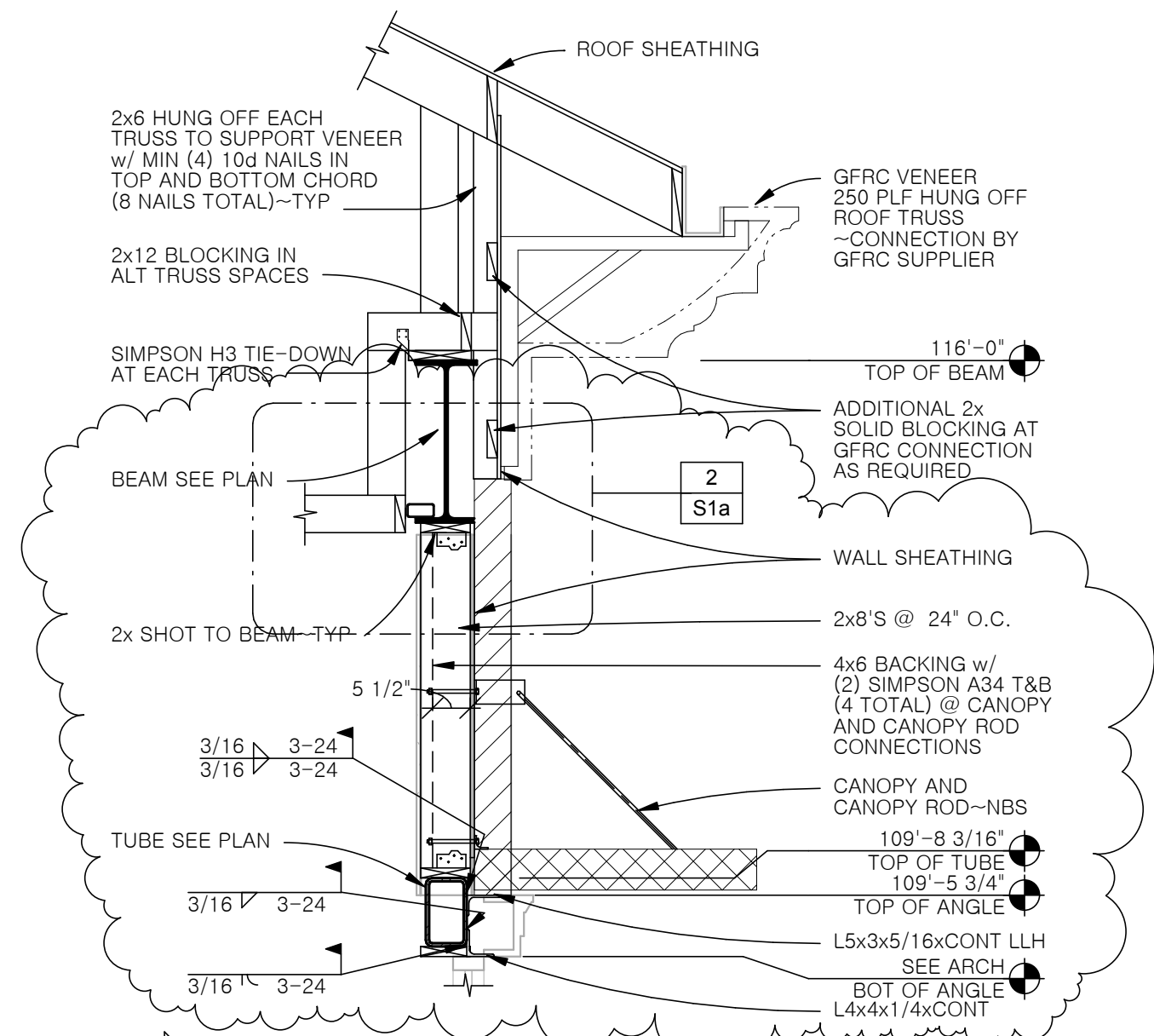
58 PLASTIC LAMINATE COUNTERTOP BACKSPLASH
A11.1 SCALE: 3/4" = 1'-0"

C:\Revit\2.16\105-00_A11_2016_Centinel_rmg\dwg\ext
9/2/2016 11:42:29 AM



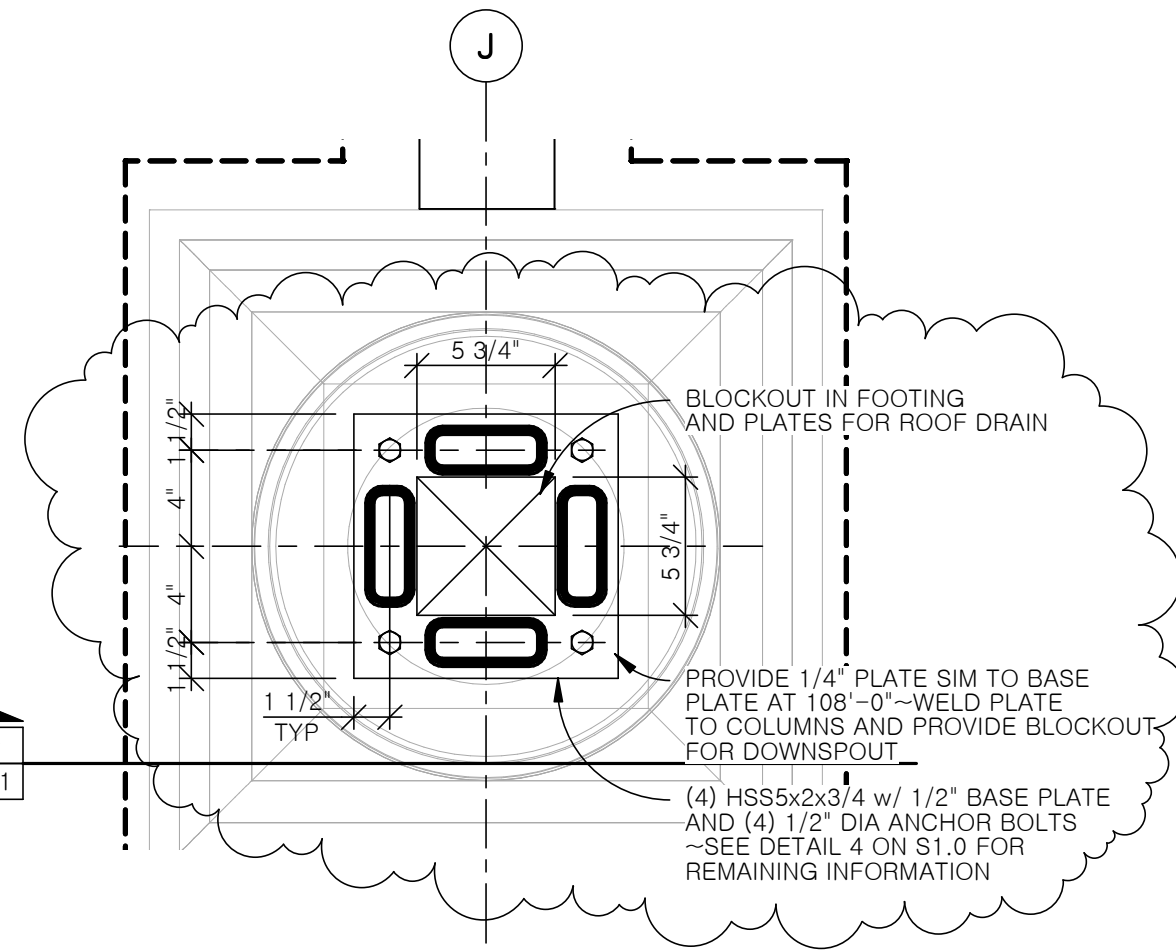
2 BEAM BRACE DETAIL (12/S2.1)

1" = 1'-0"



1 REVISED FRAMING DETAIL (22/S2.0)

1/2" = 1'-0"



3 REVISED PLAN VIEW OF COLUMNS AT DOWNSPOUT (11/S2.1)

1 1/2" = 1'-0"