

ADDENDUM NO. CC-2

to the  
Bidding Documents

for

BCDM Architects  
1015 North 98th Street, Suite 300  
Omaha, Nebraska 68114

17 August 2016

NORTHEAST COMMUNITY COLLEGE LIFELONG LEARNING CENTER  
701 East Benjamin Avenue  
Norfolk, NE 68702-0469  
BCDM Project No. 3501-01

**NOTE: ADDENDA MAY BE VIEWED AT [WWW.ADTECHPLANS.COM](http://WWW.ADTECHPLANS.COM)**

**REMINDER: BID DATE AND TIME: AUGUST 24, 2016 AT 2:00 P.M.**

**Attached is the Sign-In sheet from the Pre-Bid Meeting held on August 16, 2016.**

**NOTICE TO BIDDERS:**

The Project Manual and Drawings for the above referenced project are hereby amended as follows:

PROJECT MANUAL

SECTION 01 10 00, SUMMARY

- a. Page 01 10 00-1, after 1.06-C.-1., add the following:  
    "1.07 SCHEDULE  
        A. Receipt of Bids: August 24, 2016  
        B. Award of Contract: within 60 days of Bid  
        C. Final Completion of all Punch List Items: on or before May 1, 2017"

SECTION 01 50 00, CONSTRUCTION FACILITIES AND TEMPORARY CONTROLS

- a. Page 01 50 00-3, after 3.3-A.-1., add "2. Storage and staging area will be provided by the Owner within the building for flooring materials and accessories".

SECTION 08 43 13, ALUMINUM FRAMES AND DOORS

- a. Page 08 43 13-2, 2.01-A.-2., delete "FM Enterprises, Inc".  
b. Page 08 43 13-2, 2.01-A.-4., delete "Wausau Window and Wall Systems".  
c. Page 08 43 13-2, 2.01-A.-5., delete "United States Aluminum".  
d. Page 08 43 13-3, 2.02-A.-1., delete paragraph in its entirety and replace with "1. Finish: Anodized conforming to AA-M10C22A44, Architectural Class 1 Dark Bronze coating".  
e. Page 08 43 13-3, 2.03-A.-1., delete paragraph in its entirety and replace with "1. Finish: Anodized conforming to AA-M10C22A44, Architectural Class 1 Dark Bronze coating".

SECTION 10 65 00, PANEL OPERABLE PARTITIONS

- a. Add attached section.

DRAWINGS

SHEET G0-0, COVER SHEET

- a. At the Alternates Section, after 6, add "7. ALTERNATE NO. 7: under this alternate remove wall between E125 and E126 and install operable partition". See attached ASD-01 through ASD-06 for drawings detailing Alternate No. 7.

#### SHEET AD1-2, ENLARGED DEMOLITION PLANS

- a. Add Demolition Flag Notes 31 through 37, as shown on ASD-01.
- b. Add detail 10 "Demolition Plan at Comp. Lab E125 & Classroom E126 – Alternate #7" to sheet AD1-2, as shown on ASD-01, for work under Alternate No. 7.

#### SHEET A1-2, ENLARGED PLAN DETAILS

- a. Add Architectural Flag Notes 24 through 28, as shown on ASD-02 and ASD-03.
- b. Add detail 15 "Partial Floor Plan at Comp. Lab E125 & Classroom E126 – Alternate #7" to sheet A1-2, as shown on ASD-02, for work under Alternate No. 7.
- c. Add detail 16 "Partial RCP at Comp. Lab E125 & Classroom E126 – Alternate #7" to sheet A1-2, as shown on ASD-03, for work under Alternate No. 7.
- d. Add detail 17 "Plan Detail at Operable Partition (South) – Alternate #7" to sheet A1-2, as shown on ASD-04, for work under Alternate No. 7.
- e. Add detail 18 "Plan Detail at Operable Partition (North) – Alternate #7" to sheet A1-2, as shown on ASD-05, for work under Alternate No. 7.
- f. Add detail 19 "Section Detail Through Bulkhead at Operable Partition – Alternate #7" to sheet A1-2, as shown on ASD-06, for work under Alternate No. 7.

END OF ADDENDUM



**SECTION 10 65 00  
PANEL OPERABLE PARTITIONS**

**PART 1 GENERAL**

**1.01 RELATED WORK SPECIFIED ELSEWHERE**

- A. Panel Finishes Section 09 99 90

**1.02 QUALITY ASSURANCE**

- A. INSTALLER shall be a firm with not less than 3 years of successful experience in the installation of units similar to those required for this project and which is acceptable to or licensed by the manufacturer of the panel folding partition.
- B. FLAME SPREAD RATING. Use only facing materials which have a Flame Spread Rating of 25 or less when tested in accordance with ASTM E 84.
- C. SOUND TRANSMISSION CLASSIFICATION (STC). Provide folding partition units capable of achieving STC ratings as specified, when tested in accordance with ASTM E 90.

**1.03 SUBMITTALS**

- A. SAMPLES. Submit one 6-inch by 6-inch sample for color and texture verification of each panel covering material.
- B. SHOP DRAWINGS. Submit shop drawings to the Architect/Engineer in accord with the General Conditions and Section 01 33 00. Shop drawings shall show fabrication and erection, including plans, elevations, large scale details, anchorages, and accessory items.
- C. MAINTENANCE DATA. Submit manufacturer's maintenance instructions to the Prime Contractor for inclusion in the Owner's overall project maintenance manual.
- D. CERTIFICATION of an independent testing laboratory, certifying that the folding partitions meet the requirements of the Sound Transmission Class as specified below, shall be submitted to the Architect/Engineer.

**PART 2 PRODUCTS**

**2.01 PANEL OPERABLE PARTITIONS**

- A. PANEL OPERABLE PARTITIONS shall be manually operated top supported Series 631 (individual, omni-directional panels) as manufactured by Hufcor Inc., and installed by an authorized representative. Equivalent partitions manufactured by the following manufacturers will also be acceptable subject to compliance with requirements listed in this specification:
1. Modernfold
  2. Advanced Equipment Corporation
  3. Panelfold, Inc.

## 2.02 GENERAL PANEL REQUIREMENTS AND FEATURES

- A. Panel Widths and Quantity: Number of panels as required of approximately equal width to fit the openings shown on the Drawings. Panels shall be nominally 3-inches thick, to 48-inches in width.
- B. Panel faces shall be laminated to appropriate substrate to meet the STC requirement in 2.04 Acoustical Performance.
- C. Frames shall be of 16 gauge painted steel with integral factory applied aluminum vertical edge and face protection.
- D. Vertical sound seals shall be of tongue and groove configuration, ensure panel-to-panel alignment and prevent sound leaks between panels.
- E. Horizontal top seals shall be fixed continuous contact dual 4-finger vinyl.
- F. Horizontal bottom seals shall be retractable, provide up to 2" nominal operating clearance, and exert downward force when extended.
- G. Horizontal trim shall be of aluminum.
- H. Suspension system:
  - 1. The panels shall be supported by the Unispan pre-engineered truss and post system Series U900 Unispan as manufactured by Hufcor Inc., or approved equal.
    - a. The supporting truss shall be factory fabricated of steel and aluminum. Unispan is attached to the building structure for lateral support only. The load of the truss and partition is supported by the Unispan column posts. Bolt together truss has anodized aluminum top and bottom cords with integral anodized aluminum track and steel web-members.
    - b. Posts. End columns shall be 2 ½" x 5" clear anodized aluminum posts. Posts shall be attached to the truss with steel brackets and bolts. Posts shall be anchored to the floor with concealed fasteners. Posts shall be located approximately 1 ½" from adjacent wall surfaces. The space between the post and the adjacent wall shall be fitted with a vinyl gasket to inhibit sound.
    - c. Ceiling anchors provide lateral support and shall be set at intervals across the span of the beam.
  - 2. Finishes. Exposed trim, track and posts shall be of clear anodized architectural grade extruded aluminum alloy 6063-T6.
  - 3. Accessories: Medium Density Fiberboard Header Side Panels to cover sides of truss. Vinyl covered. Color to be selected from partition manufacturer's standard line.
- I. Face finish shall be factory applied reinforced vinyl fabric with woven backing, weighing not less than 15 oz. per lineal yard. Color shall be selected from manufacturer's standard color selectors.
- J. Exposed metal trim and seal color shall be selected from manufacturer's standard trim color selectors.
- K. Aluminum track shall be clear anodized.

### **2.03 OPERATION**

- A. Panels are manually moved from the storage area, positioned in the opening and seals set.
- B. Retractable horizontal seals shall be activated by a removable quick-set operating handle located approximately 42" from the floor in the panel edge.
- C. Final partition closure to be by lever closure panel with expanding jamb which compensates for minor wall irregularities and provides a minimum of 250 lbs. seal force against the adjacent wall for optimum sound control. The jamb activator shall be located approximately 45" from the floor in the panel face and accessed from either side of the panel.

### **2.04 ACOUSTICAL PERFORMANCE**

- A. Acoustical performance shall be tested in accordance with ASTM E90 Test Standards. Standard panel construction shall have obtained an STC rating of 49.

## **PART 3 EXECUTION**

### **3.01 INSPECTION**

- A. INSTALLER MUST EXAMINE substrates and conditions under which operable partition units are to be installed and must notify Contractor in writing of conditions detrimental to proper and timely completion of work. Do not proceed with work until satisfactory conditions have been corrected in manner acceptable to installer.

### **3.02 COORDINATION**

- A. THE CONTRACTOR shall provide and install overhead support, blocking, hanger rods, header enclosure and/or baffling as detailed on the Drawings and defined earlier in this Section. The Contractor shall provide a smooth and level floor from wall to wall and for minimum 27-inches either side of center line of the partition. All tracks shall be hung, leveled and adjusted before adjacent ceilings or bulkheads are installed.

### **3.03 INSTALLATION**

- A. COMPLY with manufacturer's recommended installation procedures, unless more stringent requirements are indicated elsewhere. Drill and tap as necessary and securely anchor track and accessories in accurate location. Install track in lengths as long as practicable, with flush, hairline joints.

### **3.04 CLEARANCES**

- A. INSTALL units with STC rating so that seals are in contact with entire perimeter when unit is in closed position, forming completely light-tight barrier.

**3.05 ADJUSTMENTS**

- A. ADJUST units as necessary to assure smooth, quiet operation without warping or binding. Check and readjust operating hardware so that latches gauge accurately and positively without forcing and binding.

**3.06 CLEANING**

- A. ALL SURFACES shall be wiped clean and free of handprints, grease, and soil.

**3.07 TRAINING**

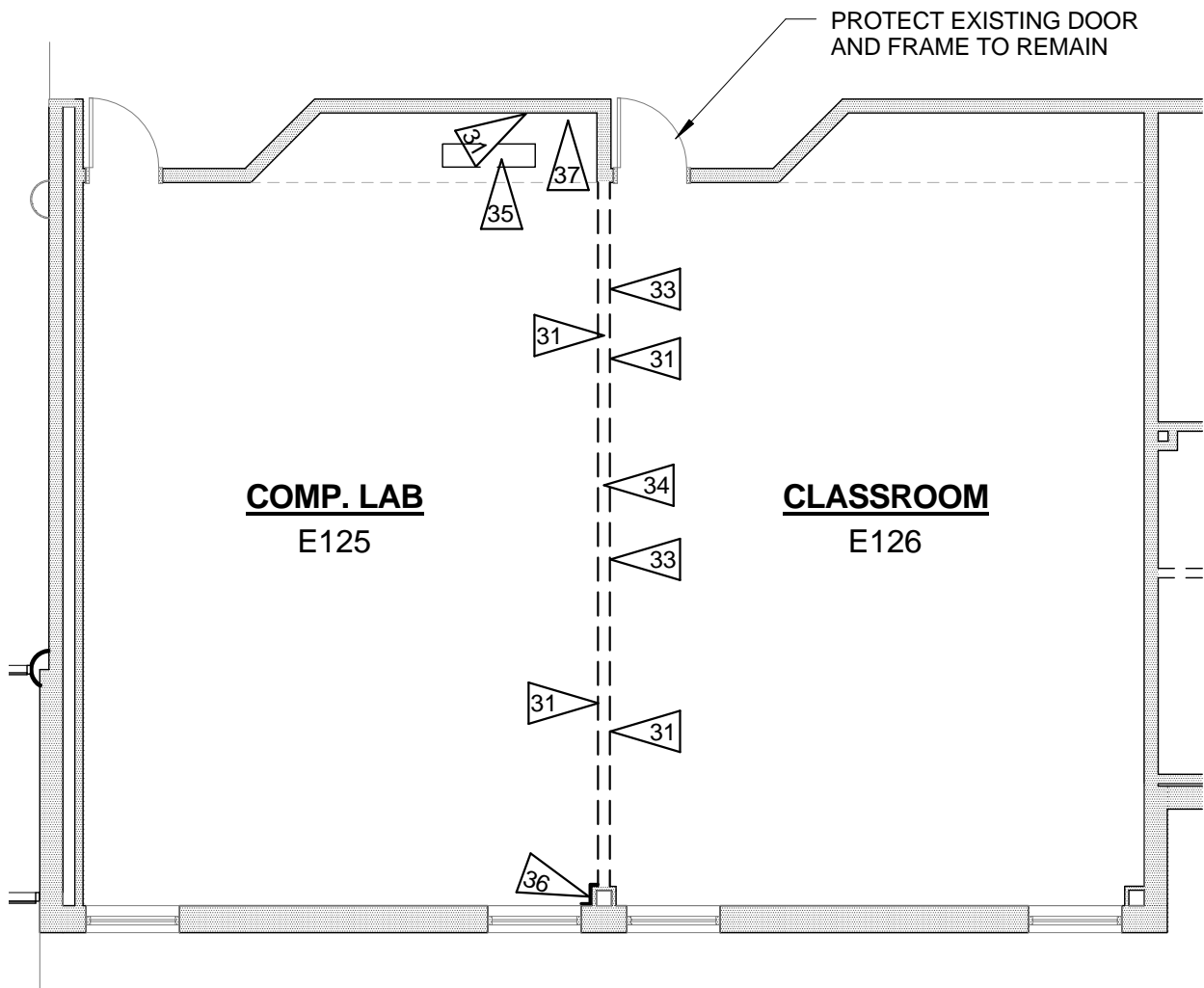
- A. INSTALLER shall demonstrate proper operation and maintenance procedure to owner's representatives.
- B. OPERATING HANDLE and owners manuals shall be provided to the owner's representative.

**END OF SECTION**

## DEMOLITION FLAG NOTES

### DEMOLITION FLAG NOTES APPLICABLE TO SHEETS AD1-1 & AD1-2 ONLY

- ▶ 31 REMOVE EXISTING ELECTRICAL DEVICE. DISCONNECT AND REMOVE DEVICE, WIRING, AND ASSOCIATED PIPING AS REQUIRED TO ACCOMMODATE NEW WORK.
- ▶ 32 REMOVE AND RELOCATE EXISTING THERMOSTAT. (SEE FLOOR PLAN).
- ▶ 33 REMOVE AND SALVAGE EXISTING TACK BOARD. TURN OVER TO OWNER.
- ▶ 34 REMOVE WALL IN ITS ENTIRETY ALONG WITH ANY BASE MATERIAL. PROTECT EXISTING SPRINKLER PIPING AND ELECTRICAL PIPING THAT PASSES THROUGH WALL.
- ▶ 35 REMOVE AND RELOCATE RETURN AIR GRILLE IN BULKHEAD ABOVE. (SEE REFLECTED CEILING PLAN).
- ▶ 36 REMOVE EXISTING GYP BOARD ALONG COLUMN.
- ▶ 37 DISCONNECT AND REMOVE EXISTING LIGHT FIXTURE IN COVE.



10 DEMOLITION PLAN AT COMP. LAB E125 & CLASSROOM E126 - ALTERNATE #7  
1/8" = 1'-0"

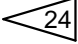
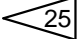


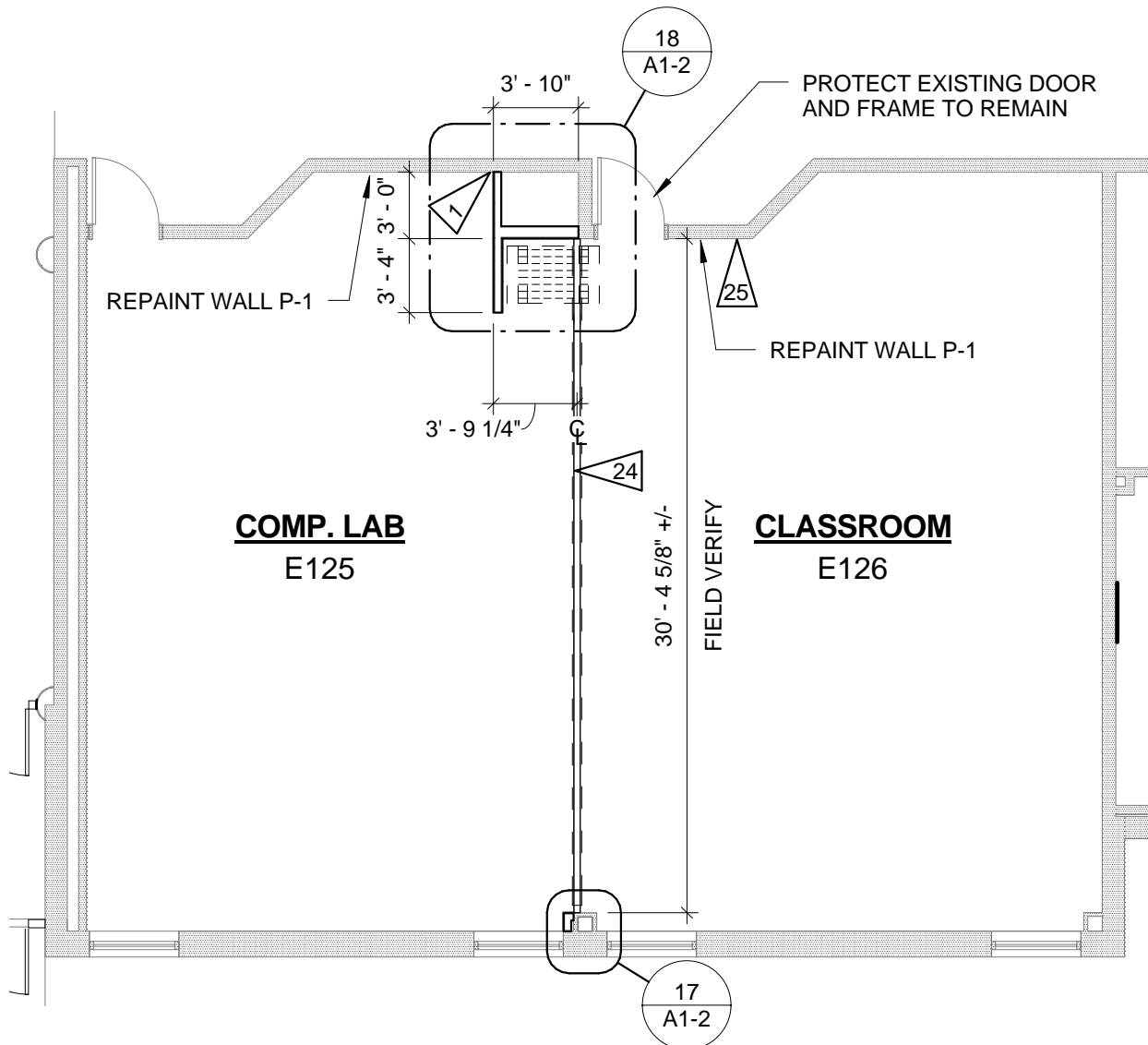
NECC LIFELONG LEARNING CENTER  
Norfolk, NE 68702-0469

3501-01	DRAWING REFERENCED: AD1-2	ATTACHMENT
08/17/2016		ASD-01

## ARCHITECTURAL FLAG NOTES

**FLAG NOTES APPLICABLE TO SHEETS A1-1 & A1-2 ONLY**

- 
**24** NEW OPERABLE PANEL PARTITION WITH PRE-ENGINEERED STRUCTURAL SUPPORT BY OPERABLE PARTITION MANUF. UNDER ALTERNATE NO. 7.
- 
**25** REINSTALL THERMOSTAT AT SAME HEIGHT AS EXISTING, RECONNECT TO EXISTING UNIT.



**(15)** PARTIAL FLOOR PLAN AT COMP. LAB E125 & CLASSROOM E126 - ALTERNATE #7  
 1/8" = 1'-0"



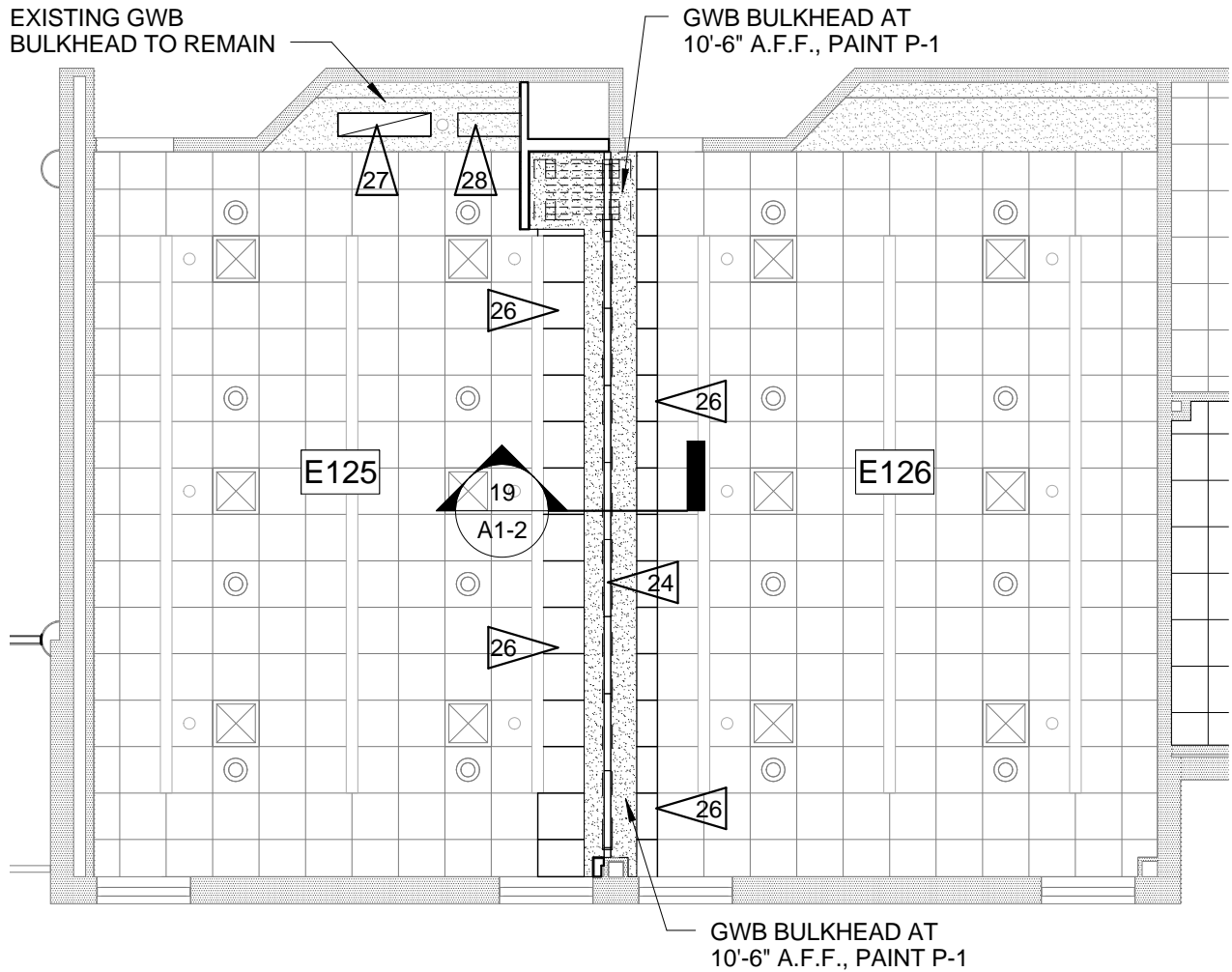
**NECC LIFELONG LEARNING CENTER**  
 Norfolk, NE 68702-0469

3501-01	DRAWING REFERENCED: A1-2	ATTACHMENT
08/17/2016		ASD-02

## ARCHITECTURAL FLAG NOTES

### FLAG NOTES APPLICABLE TO SHEETS A1-1 & A1-2 ONLY

- ▶ 26 REWORK ATC GRID AND PADS AS REQUIRED AT INSTALLATION OF NEW GWB BULKHEAD.
- ▶ 27 REINSTALL RETURN AIR GRILLE, RECONNECT TO EXISTING DUCTWORK.
- ▶ 28 PATCH BULKHEAD WITH GWB AND PAINT P-1, AFTER RELOCATION OF RETURN AIR GRILLE.



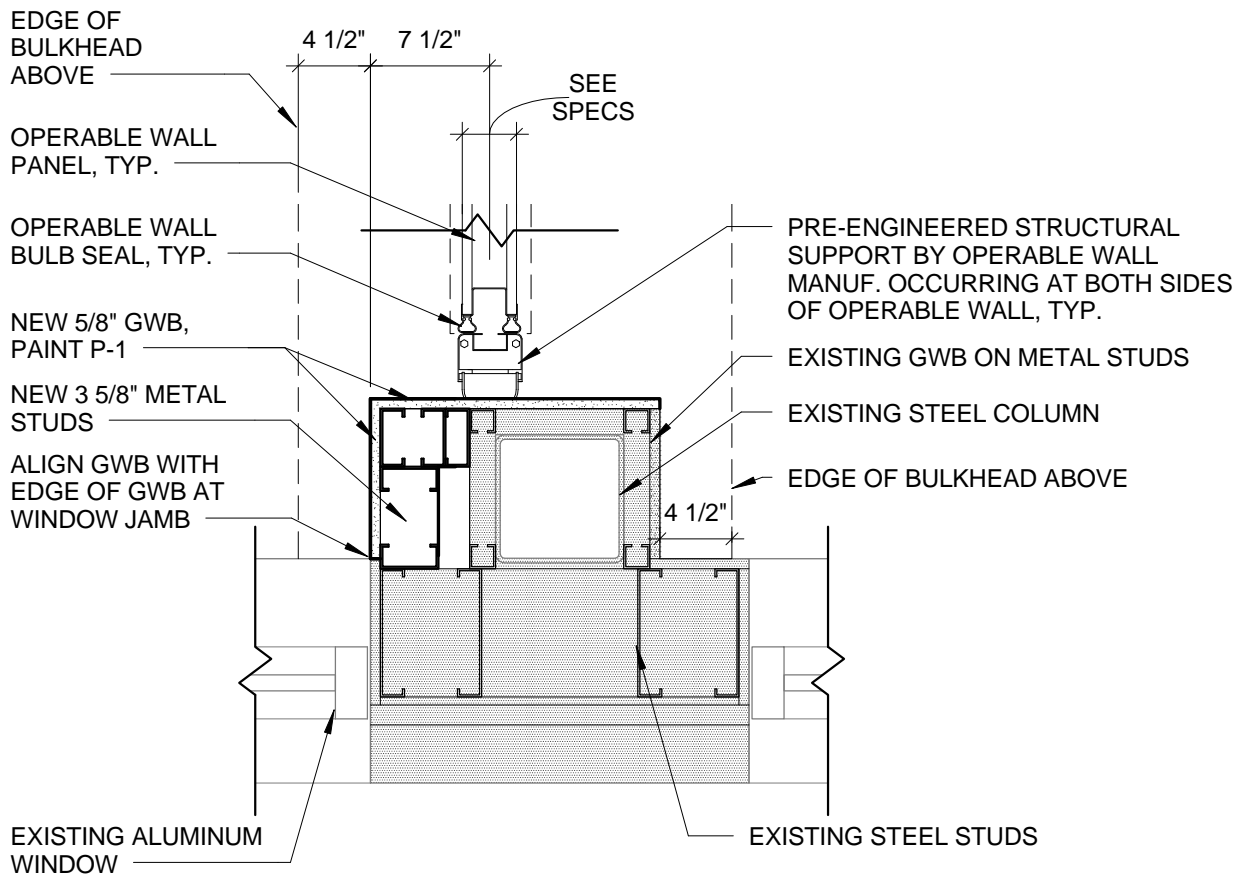
16

PARTIAL RCP AT COMP. LAB E125 & CLASSROOM E126 - ALTERNATE #7  
 1/8" = 1'-0"



NECC LIFELONG LEARNING CENTER  
 Norfolk, NE 68702-0469

3501-01	DRAWING REFERENCED: A1-2	ATTACHMENT
08/17/2016		ASD-03

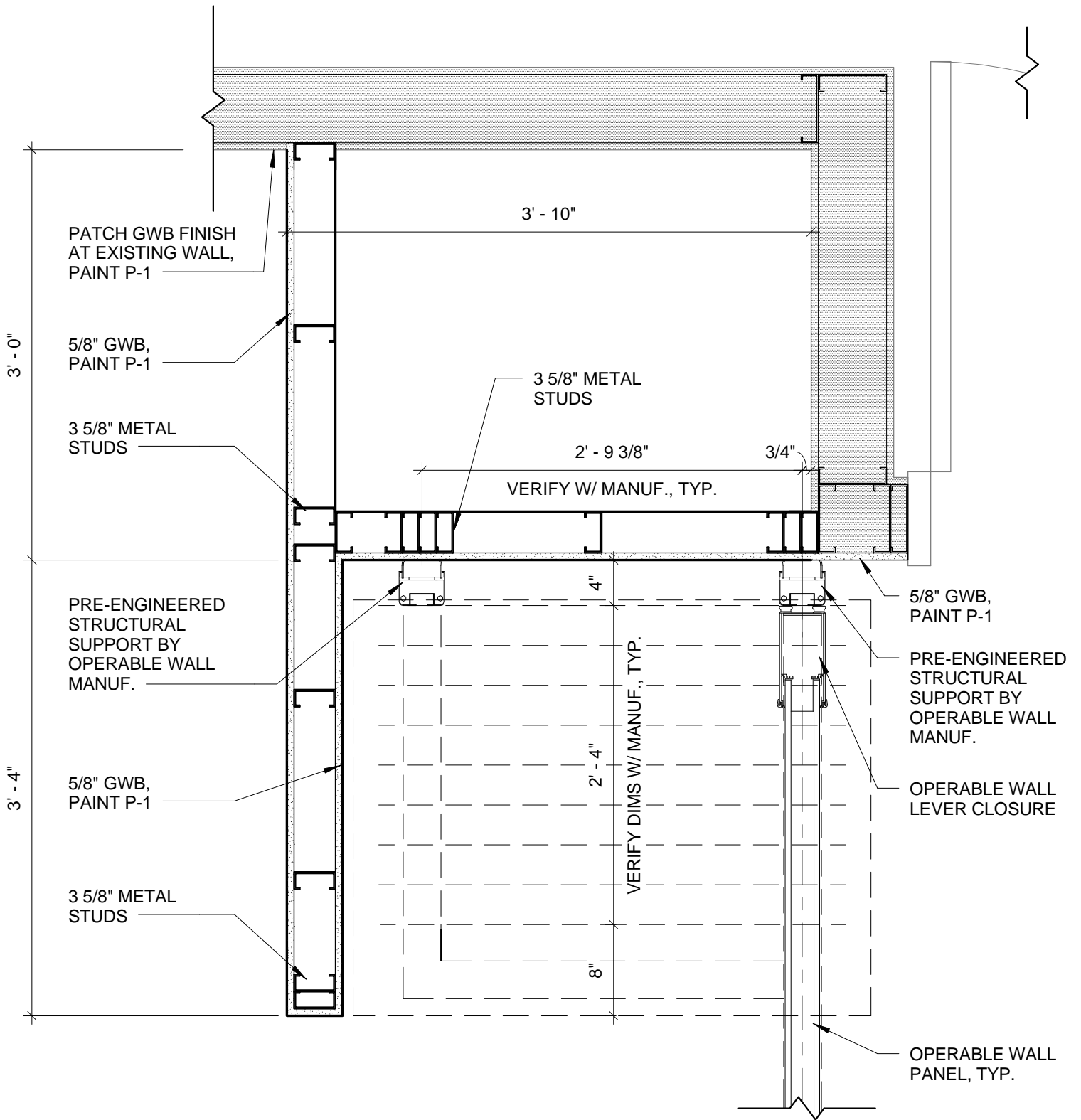


17 PLAN DETAIL AT OPERABLE PARTITION (SOUTH) - ALTERNATE #7  
 1" = 1'-0"



NECC LIFELONG LEARNING CENTER  
 Norfolk, NE 68702-0469

3501-01	DRAWING REFERENCED: A1-2	ATTACHMENT
08/17/2016		ASD-04

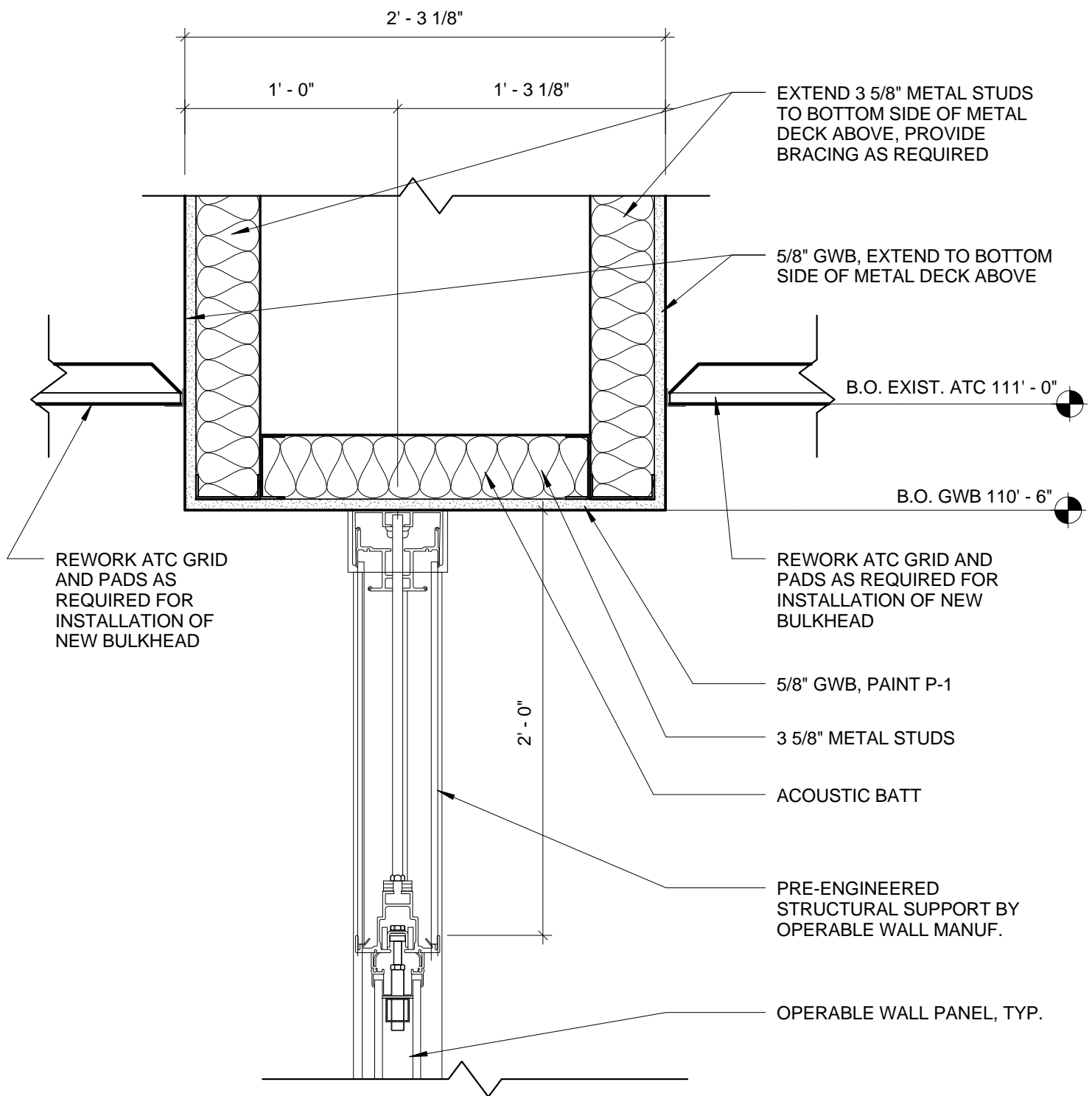


18 PLAN DETAIL AT OPERABLE PARTITION (NORTH) - ALTERNATE #7  
 1" = 1'-0"



NECC LIFELONG LEARNING CENTER  
 Norfolk, NE 68702-0469

3501-01	DRAWING REFERENCED: A1-2	ATTACHMENT
08/17/2016		ASD-05



19 SECTION DETAIL THROUGH BULKHEAD AT OPERABLE PARTITION - ALTERNATE #7  
 1 1/2" = 1'-0"



NECC LIFELONG LEARNING CENTER  
 Norfolk, NE 68702-0469

3501-01	DRAWING REFERENCED: A1-2	ATTACHMENT
08/17/2016		ASD-06