



ARCHITECTURE • ENGINEERING • INTERIOR DESIGN

ADDENDUM

PROJECT: Nebraska Department of Correctional Services
Cornhusker State Industries
Nebraska State Penitentiary – Laundry Facility
Steam Condensate Project
Lincoln, Nebraska

ADDENDUM NUMBER

AD-2

ISSUED BY:

Greg Smith, Architect
Brandon Sire, Mechanical Engineer

PROJECT #: 15-0041

DATE ISSUED: Monday, July 11, 2016

This addendum is issued by the Architect to all known bidders before receipt of proposals, for the purpose of explaining, interpreting, or modifying the original plans and specifications. When enumerated by the bidder upon the proposal sheet, the information or instructions given hereon will be equally binding upon all parties as if included in the original plans and specifications.

BIDDER MUST ENTER THE NUMBER OF THIS ADDENDUM ON HIS PROPOSAL SHEET

THE FOLLOWING ITEMS ARE APPLICABLE TO THE SPECIFICATIONS:

AD-2, ITEM 1:

In reference to the specification 131110, see attached revised section.

AD-2, ITEM 2:

In reference to specification 131110, Addendum No. 1, Item AD-1, Item 3, Unilinc System to be deleted entirely.

AD-2, ITEM 3:

In reference to specification 232223, add the following as Sub-paragraph 4 below Paragraph 2.1.A:

- 4. Russell Pump

THE FOLLOWING ITEMS ARE APPLICABLE TO THE DRAWINGS:

AD-2, ITEM 4:

In reference to sheet A-101, Addendum No. 1, Item AD-1, Item 7, Floor Repair Section to be deleted entirely.

AD-2, ITEM 5:

In reference to Sheet A-101 – Architectural Plans and Details, see attached Supplemental Drawing A-101.2 changing the floor plan to show the location of the new washing machines and the existing quarry tile floor to remain. Existing floor drain is still required to be infilled.

AD-2, ITEM 6:

In reference to Sheet A-101 – Architectural Plans and Details, see attached Supplemental Drawing A-101.3 changing the floor drain infill section to not include the demolition of the existing quarry tile floor.

AD-2, ITEM 7:

In reference to sheet P-102, see attached sketch P-102.1 for revisions.

AD-2, ITEM 8:

In reference to sheet P-501, see attached sketch P-501.1 for revisions.

AD-2, ITEM 9:

In reference to sheet E-102, see attached sketch E-102.1 for revisions.

END AD-1

NEBRASKA DEPARTMENT OF CORRECTIONAL SERVICES
CORNHUSKER STATE INDUSTRIES
NEBRASKA STATE PENITENTIARY - LAUNDRY FACILITY STEAM CONDENSATE PROJECT
LINCOLN, NEBRASKA

SECTION 131110 - COMMERCIAL LAUNDRY EQUIPMENT

PART 1 - GENERAL

1.1 SECTION INCLUDES

- A. Laundry Washer-extractor, **90 lb.** Capacity: Automatic laundry washer-extractor for processing water-washed linen items.

1.2 SYSTEM DESCRIPTION

A. Design Requirements:

1. Construction: 304 or equal stainless steel cylinder, tub, and cover panels.
2. Input Voltage: Q: **200-240/50-60/3**; 3-wire (L1, L2, L3).
3. Dry Weight Capacity: **90 lb.**
4. Wash Cylinder Volume: **14.13 cubic feet** minimum.
5. Overall Width: **47.04 inches** nominal.
6. Overall Height: **75 inches** nominal.
7. Overall Depth: **52.4 inches** nominal.
8. Number and Size of Water *Supply Inlet Valves*: **Three** with **1 inch BSP** male connections.
9. ***Number and Size of Drain Outlets: 2 at 3 inches. Supplier shall provide 48 inch long by 15 inches wide by 12 inches high drain trough behind each washer for discharge to floor drain. See Drawings for drain configuration required.***
10. Overflow: Internally plumbed.
11. Control System: Programmable microprocessor.
12. Cylinder Drive: Single-motor, **10** hp, capable of **830** RPM, ***maximum using a rotation sensor to monitor performance.***
13. ***Bearing Lubrication: Shall require lubrication once a month or every 200 working hours, whichever comes first.***
14. ***Provide manufacturer's soft-mount option.***

B. Performance Requirements:

1. Number of Selectable ***Cylinder Speeds: Manufacturer's standard.***
2. G-force at Highest Extract Speed: **350 G's.**
3. Chemical Supply System:
 - a. ***Manually filled 5 compartment dry chemical dispensing system.***
 - b. ***Automatic flushing and connections for 6 external supply lines and control signals for 8 external supplies.***
4. ***Forty-three programmable water levels.***
5. Control System:
 - a. Programmable microprocessor.
 - b. ***Ninety-nine*** cycle capacity.

NEBRASKA DEPARTMENT OF CORRECTIONAL SERVICES
CORNHUSKER STATE INDUSTRIES
NEBRASKA STATE PENITENTIARY - LAUNDRY FACILITY STEAM CONDENSATE PROJECT
LINCOLN, NEBRASKA

- c. *RS-485 PC link for programming.*
- d. *USB drive.*
- e. *Capable of precise temperature controlled fills.*

1.3 DELIVERY, STORAGE, AND HANDLING

- A. Acceptance at Site: Inspect machine for damage prior to acceptance. if damage is found, follow freight handler's procedure for claims.
- B. Storage and Protection:
 - 1. Machine should be stored in a site protected from weather, direct sunlight, and temperature extremes. Do not remove packaging prior to storage.
 - 2. If machine is to be stored for an extended period of time, consult manufacturer for special requirements.

1.4 SYSTEM START-UP AND COMMISSIONING

- A. Machine installation should be inspected by local manufacturer's representative prior to start-up and operation. The party installing the machine is responsible for setting the schedule for this inspection.

PART 2 - PRODUCTS

2.1 MANUFACTURERS

- A. Alliance Laundry Systems, UniMac, obtain commercial laundry equipment from a single manufacturer.

2.2 QUALIFIED MODELS

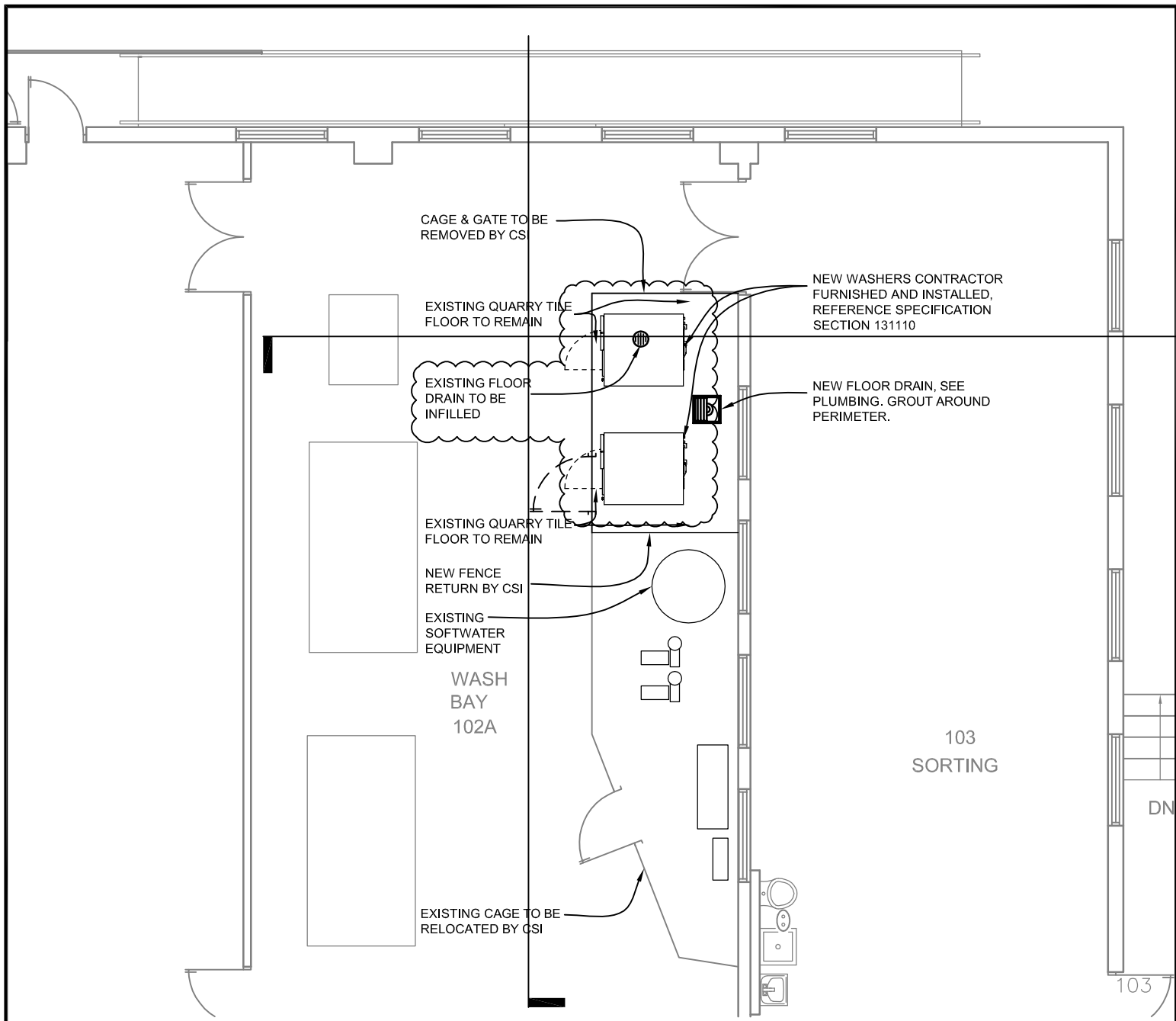
- A. UniMac model *UYN090*. (no substitutions)

PART 3 - EXECUTION

3.1 INSTALLATION

- A. Refer to and comply with manufacturer's installation instructions. Do not deviate without permission from site Owner, Architect, General Contractor, and manufacturer's local representative.

END OF SECTION 131110



1

Partial First Floor Plan

Scale: 1/8" = 1'-0"

Lincoln
 1221 N Street, Suite 600
 Lincoln NE 68508
 Phone 402-476-9700
 Fax 402-476-9722

Vermillion
 15 East Main, Suite 201
 Vermillion SD 57069
 Phone 605-624-1081



Client Information
**Nebraska Dept.
 of Correctional
 Services**

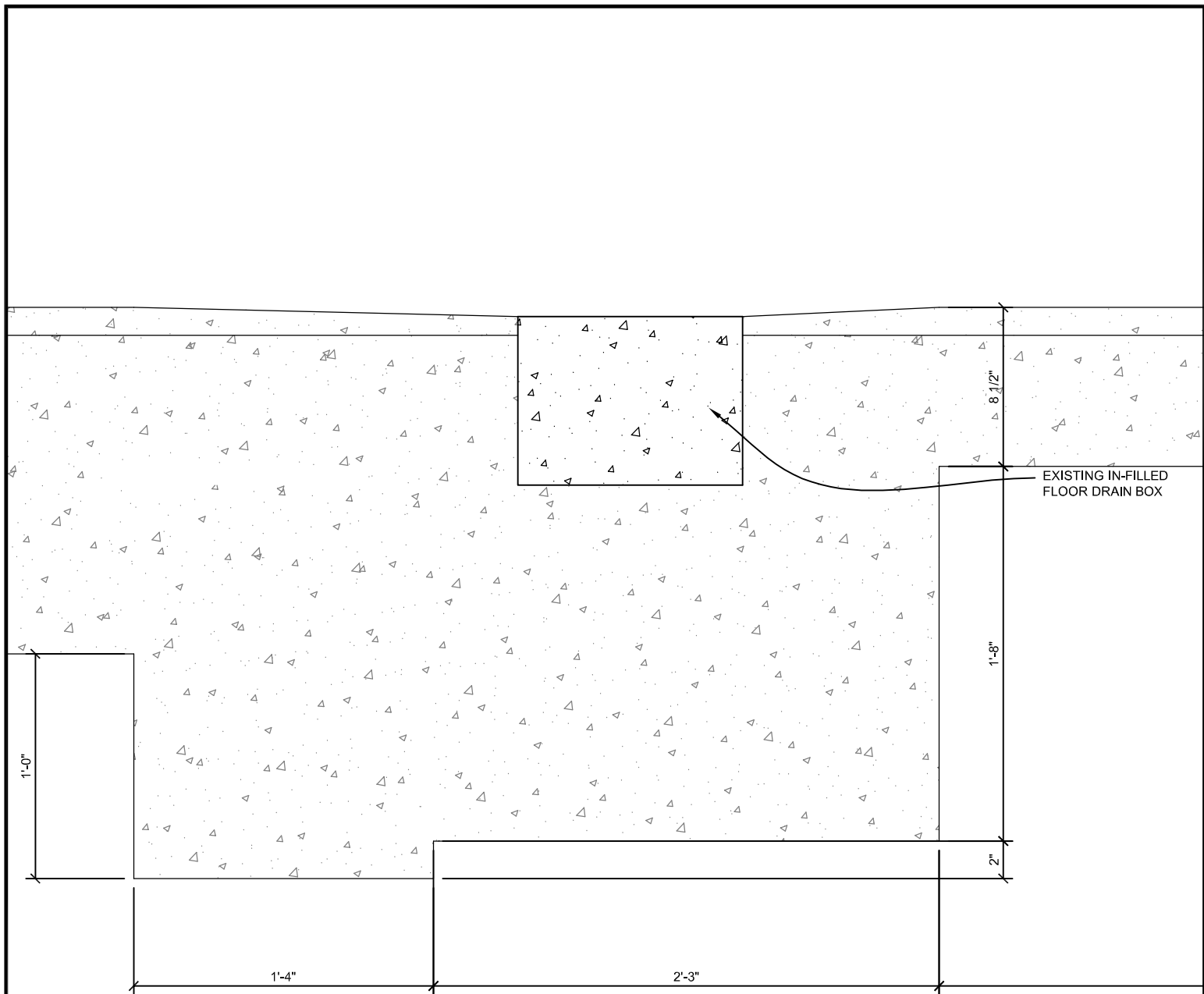
Project Information
**CSI/NSP Laundry Facility
 Steam Condensate Project**

Issue Date	7/08/16
Job #	15-0041
Drawn by:	KTR
CADD file:	A-101

COPYRIGHT © DAVIS DESIGN ALL RIGHTS RESERVED

Drawing Title
Revised First Floor Plan

From Sheet: A-101	for CA use:
Drawing # A-101.2	



4

Floor Drain Infill Section

Scale: 1 1/2" = 1'-0"

Lincoln
 1221 N Street, Suite 600
 Lincoln NE 68508
 Phone 402-476-9700
 Fax 402-476-9722

Vermillion
 15 East Main, Suite 201
 Vermillion SD 57069
 Phone 605-624-1081



Client Information
**Nebraska Dept.
 of Correctional
 Services**

Project Information
**CSI/NSP Laundry Facility
 Steam Condensate Project**

Issue Date	7/08/16
Job #	15-0041
Drawn by:	KTR
CADD file:	A-101

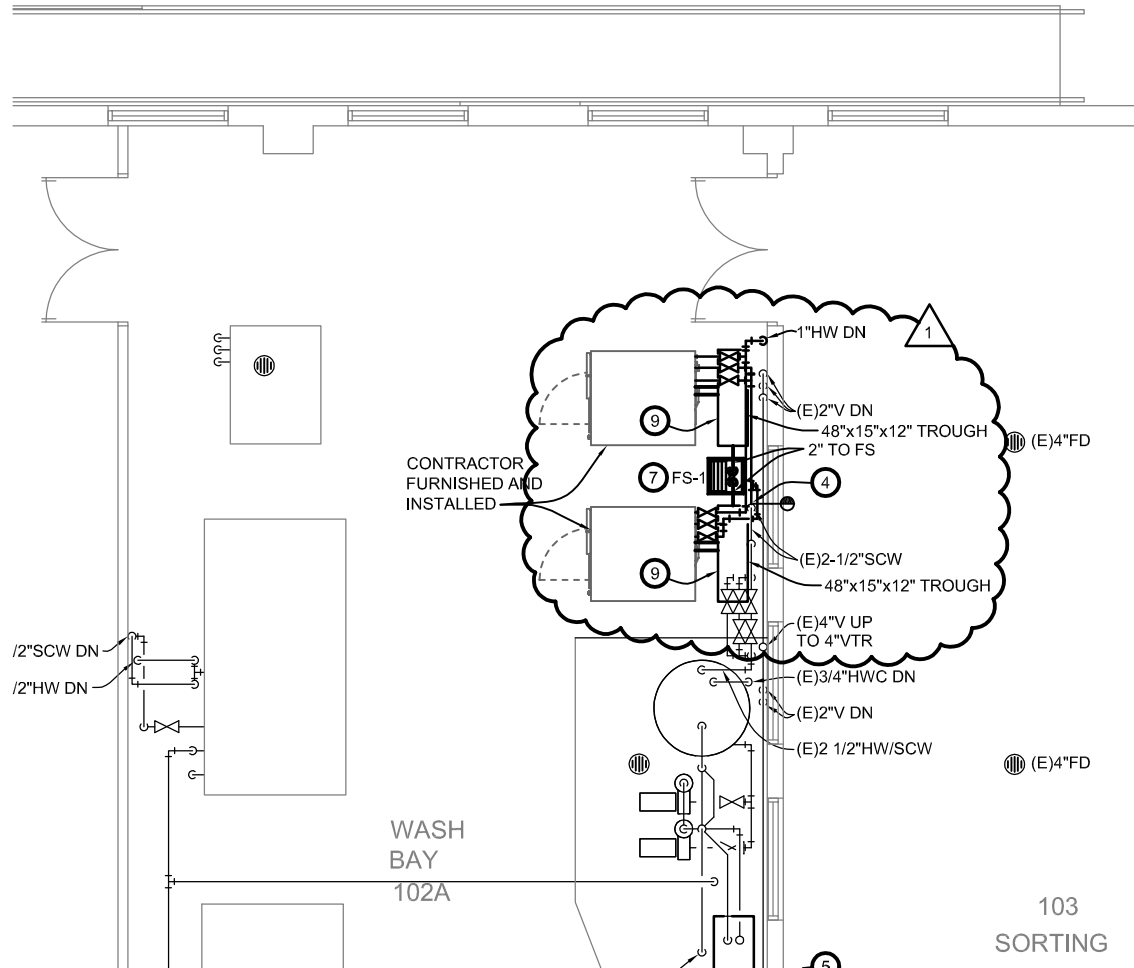
COPYRIGHT © DAVIS DESIGN ALL RIGHTS RESERVED

Drawing Title
 Revised First Floor Plan

From Sheet: A-101	for CA use:
Drawing # A-101.3	

PLUMBING PLAN KEYED NOTES:

- ⑨ INSTALL ABOVE FLOOR DRAIN THROUGH PROVIDED WITH WASHERS AND PIPE TO FLOOR SINK.



Lincoln
1221 N Street, Suite 600
Lincoln NE 68508
Phone 402-476-9700
Fax 402-476-9722

Vermillion
15 East Main, Suite 201
Vermillion SD 57069
Phone 605-624-1081



Client Information
**Nebraska Dept.
of Correctional
Services**

Project Information
**CSI/NSP Laundry Facility
Steam Condensate Project**

Issue Date	07-08-2016
Job #	15-0041
Drawn by:	MA
CADD file:	

COPYRIGHT © DAVIS DESIGN ALL RIGHTS RESERVED

Drawing Title
Plumbing New Work Plans

From Sheet: P-102	for CA use:
----------------------	-------------

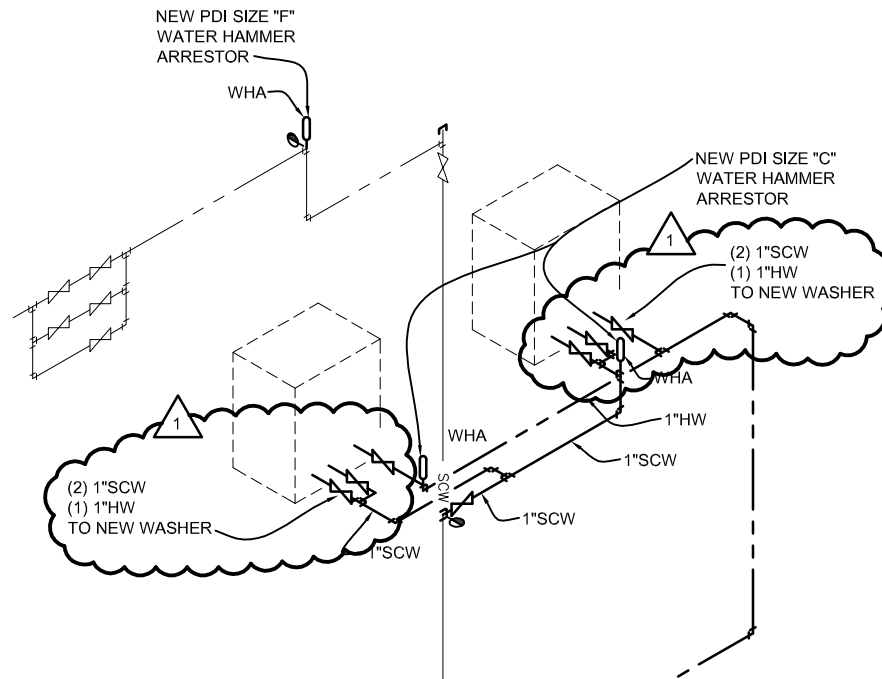
Drawing # P-102.1



2

Plumbing New Work First Floor Plan

Scale: 1/8" = 1'-0"



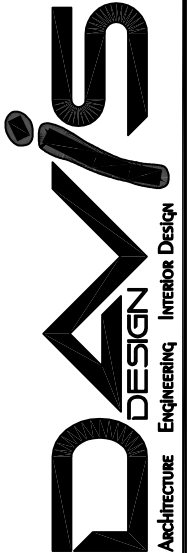
2

Domestic Water Isometric - New Work

Scale: NOT TO SCALE

Lincoln
 1221 N Street, Suite 600
 Lincoln NE 68508
 Phone 402-476-9700
 Fax 402-476-9722

Vermillion
 15 East Main, Suite 201
 Vermillion SD 57069
 Phone 605-624-1081



Client Information

Nebraska Dept.
 of Correctional
 Services

Project Information

CSI/NSP Laundry Facility
 Steam Condensate Project

Issue Date 07-08-2016

Job # 15-0041

Drawn by: MA

CADD file:

COPYRIGHT © DAVIS DESIGN ALL RIGHTS RESERVED

Drawing Title

Plumbing Details and
 Schedules

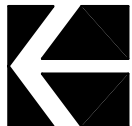
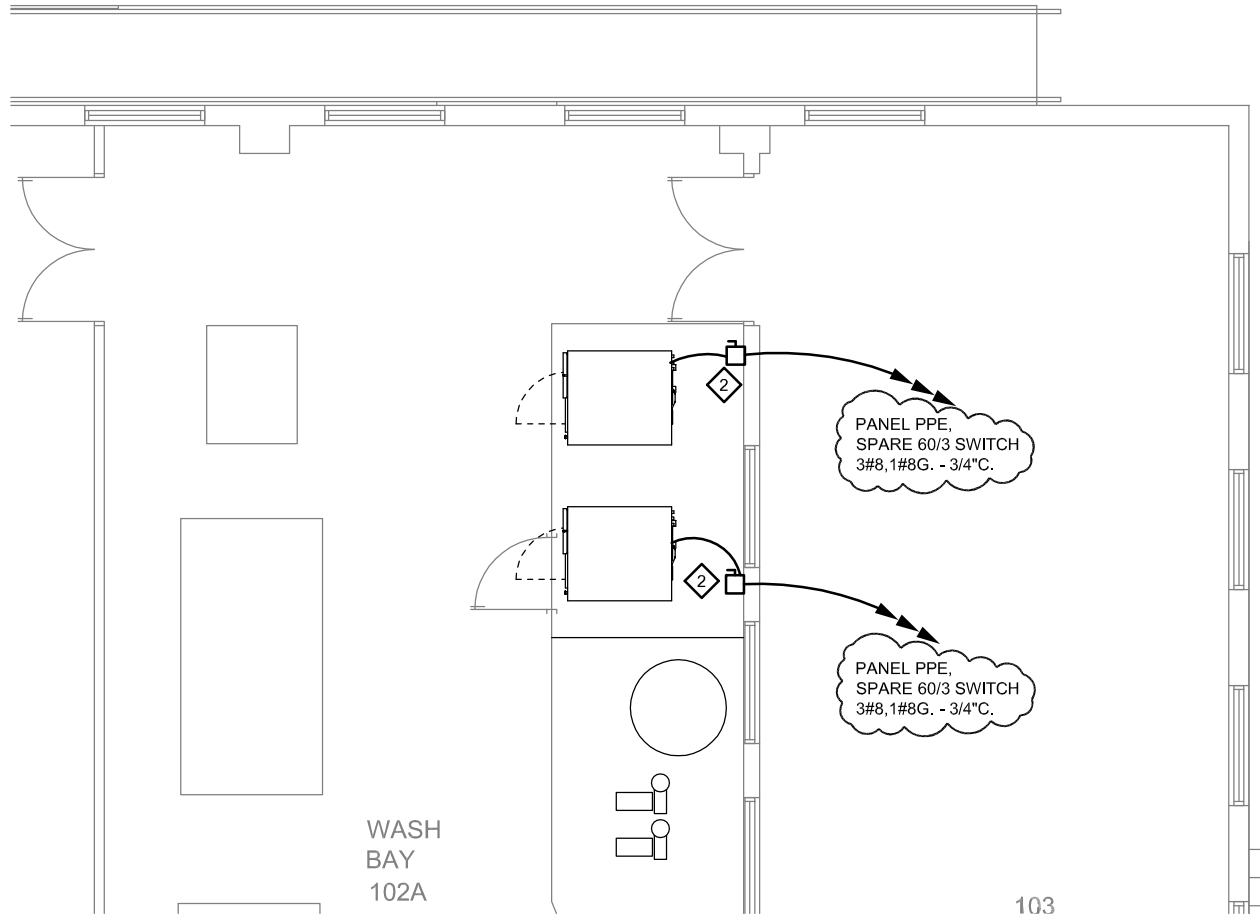
From Sheet:
 P-501

for CA use:

Drawing #
 P-501.1

KEYED ELECTRICAL NOTES

- 2 PROVIDE NEW HD, 600V, 60A, NEMA 1 DISCONNECT 60" AFF ON WALL. CONNECT NEW WASHER TO DISCONNECT WITH LIQUID TIGHT FLEXIBLE METAL CONDUIT. RUN CIRCUIT TO PANEL INDICATED. COORDINATE EXACT LOCATION OF DISCONNECT WITH WASHER INSTALLERS PRIOR TO ROUGH-IN.
- 6 PROVIDE NEW 20AMP FUSES TO SPARE 60AMP FUSIBLE SWITCH IN EXISTING DISTRIBUTION PANEL 'PPE' FOR EACH WASHER. MATCH AIC RATING OF EXISTING PANEL. MATCH FUSE TYPE IN EXISTING DISTRIBUTION PANEL. VERIFY PANEL MANUFACTURER IS SQ D PRIOR TO ORDERING NEW FUSES. RELABEL PANE



2

Electrical New First Floor Plan

Scale: 1/8" = 1'-0"

Lincoln
1221 N Street, Suite 600
Lincoln NE 68508
Phone 402-476-9700
Fax 402-476-9722

Vermillion
15 East Main, Suite 201
Vermillion SD 57069
Phone 605-624-1081



Client Information

Nebraska Dept.
of Correctional
Services

Project Information

CSI/NSP Laundry Facility
Steam Condensate Project

Issue Date 07-08-2016

Job # 15-0041

Drawn by: ...

CADD file:

COPYRIGHT © DAVIS DESIGN ALL RIGHTS RESERVED

Drawing Title

Electrical New Plans

From Sheet:
E-102

for CA use:

Drawing #
E-102.1