

DOCUMENT 009113 – ADDENDA NUMBER 05

1.1 PROJECT INFORMATION

- A. Project Name: St Gregory the Great Dorm Addition.
- B. Owner: St Gregory the Great Seminary.
- C. Architect: Clark Architects Collaborative 3.
- D. Architect Project Number: 14021.
- E. Date of Addendum: 05/19/2016.

1.2 NOTICE TO BIDDERS

- A. This Addendum is issued to all registered plan holders pursuant to the Instructions to Bidders and Conditions of the Contract. This Addendum serves to clarify, revise, and supersede information in the Project Manual, Drawings, and previously issued Addenda. Portions of the Addendum affecting the Contract Documents will be incorporated into the Contract by enumeration of the Addendum in the Owner/Contractor Agreement.
 - 1. List of General Contractors:
 - a. Cheever Construction
 - b. Dickey Hinds Muir Inc.
 - c. Kingery Construction
 - 2. List of other Plan Holders can be found on A&D Technical Supply's website. A copy of what was on their website as of 05/19/16 is included with this addendum.
- B. The Bidder shall acknowledge receipt of this Addendum in the appropriate space on the Bid Form.
- C. The date for receipt of bids is unchanged by this Addendum, at same time and location.
 - 1. Bid Date: May 24th, 2016.

1.3 ATTACHMENTS

- A. This Addendum includes the following attached Documents and Specification Sections:
 - 1. Section 096813 Tile Carpeting, dated 5/23/16 (Re-issued).
 - 2. Section 096816 Sheet Carpeting, dated 5/23/16 (new)
- B. This Addendum includes the attached Addendum Drawings:
 - 1. Architectural Addendum Drawing AAD-01, dated 05/20/16, revising Sheet A103.

2. Architectural Addendum Drawing AAD-02, dated 05/20/16, revising Sheets A104.
3. Architectural Addendum Drawing AAD-03, dated 05/20/16, revising Sheet A104.
4. Architectural Addendum Drawing AAD-04, dated 05/23/16, revising Sheet A104.

1.4 REVISIONS TO DIVISIONS 02 - 49 SPECIFICATION SECTIONS

- A. Specification Section 096813 Tile Carpeting, (reissued).
 1. Paragraph 2.2.A.1.: Change the carpets in the Dorm Bedrooms, Dorm Hallway, Dorm lounge, Classrooms and Classroom Corridors.
- B. Specification Section 096816 Sheet Carpeting, (new).
 1. Paragraph 2.1.A.1.: Change the carpets in the Priest Suites.
 2. Paragraph 2.2.: Add carpet cushion in Priest Bedrooms.

1.5 REVISIONS TO DRAWING SHEETS

- A. Sheet A103 – Dorm Addition – fp1 Rooms 170-188 (not reissued).
 1. Lab Class/Storage has added notes clarifying extent of Lab Storage Units.
- B. Sheet A104 – Dorm Addition – Priest Suites (not reissued).
 1. Refer to drawings A13 and A14: Clarified material that is to be used for the Closet Shelving System. See Enclosed AAD-02 and AAD-04.
 2. Refer to drawings A1, A6, and H11: Clarified scope and material that is to be used for the Closet Shelf and Rod. See Enclosed AAD-03 and AAD-04.

END OF DOCUMENT 009113

SECTION 096813 - TILE CARPETING

PART 1 - GENERAL

1.1 RELATED DOCUMENTS

- A. Drawings and general provisions of the Contract, including General and Supplementary Conditions and Division 01 Specification Sections, apply to this Section.

1.2 SUMMARY

- A. Section includes modular, carpet tile.
- B. Related Requirements:
 - 1. Section 096513 "Resilient Base and Accessories" and Section 096519 "Resilient Tile Flooring" for resilient wall base and accessories installed with carpet tile.

1.3 PREINSTALLATION MEETINGS

- A. Preinstallation Conference: Conduct conference at Project site.
 - 1. Review methods and procedures related to carpet tile installation including, but not limited to, the following:
 - a. Review delivery, storage, and handling procedures.
 - b. Review ambient conditions and ventilation procedures.
 - c. Review subfloor preparation procedures.

1.4 ACTION SUBMITTALS

- A. Product Data: For each type of product.
 - 1. Include manufacturer's written data on physical characteristics, durability, and fade resistance.
 - 2. Include installation recommendations for each type of substrate.
- B. Samples: For each of the following products and for each color and texture required. Label each Sample with manufacturer's name, material description, color, pattern, and designation indicated on Drawings and in schedules.
 - 1. Carpet Tile: Full-size Sample.
- C. Product Schedule: For carpet tile. Use same designations indicated on Drawings.

1.5 INFORMATIONAL SUBMITTALS

- A. Qualification Data: For Installer.
- B. Product Test Reports: For carpet tile, for tests performed by a qualified testing agency.
- C. Sample Warranty: For special warranty.

1.6 CLOSEOUT SUBMITTALS

- A. Maintenance Data: For carpet tiles to include in maintenance manuals. Include the following:
 - 1. Methods for maintaining carpet tile, including cleaning and stain-removal products and procedures and manufacturer's recommended maintenance schedule.
 - 2. Precautions for cleaning materials and methods that could be detrimental to carpet tile.

1.7 MAINTENANCE MATERIAL SUBMITTALS

- A. Furnish extra materials, from the same product run, that match products installed and that are packaged with protective covering for storage and identified with labels describing contents.
 - 1. Carpet Tile: Full-size units equal to 5 percent of amount installed for each type indicated, but not less than **10 sq. yd. (8.3 sq. m)**.

1.8 QUALITY ASSURANCE

- A. Installer Qualifications: An experienced installer who has completed a minimum of 5 projects of comparable size and quality.
- B. Fire-Test-Response Ratings: Where indicated, provide carpet tile identical to those of assemblies tested for fire response according to NFPA 253 by a qualified testing agency.

1.9 DELIVERY, STORAGE, AND HANDLING

- A. Comply with CRI 104.

1.10 FIELD CONDITIONS

- A. Comply with CRI 104 for temperature, humidity, and ventilation limitations.
- B. Environmental Limitations: Do not deliver or install carpet tiles until spaces are enclosed and weathertight, wet work in spaces is complete and dry, and ambient temperature and humidity conditions are maintained at occupancy levels during the remainder of the construction period.
- C. Do not install carpet tiles over concrete slabs until slabs have cured and are sufficiently dry to bond with adhesive and concrete slabs have pH range recommended by carpet tile manufacturer.

- D. Where demountable partitions or other items are indicated for installation on top of carpet tiles, install carpet tiles before installing these items.

1.11 WARRANTY

- A. Special Warranty for Carpet Tiles: Manufacturer agrees to repair or replace components of carpet tile installation that fail in materials or workmanship within specified warranty period.
 - 1. Warranty does not include deterioration or failure of carpet tile due to unusual traffic, failure of substrate, vandalism, or abuse.
 - 2. Failures include, but are not limited to, more than 10 percent edge raveling, snags, runs, dimensional stability, excess static discharge, loss of tuft bind strength, loss of face fiber, and delamination.
 - 3. Warranty Period: 10 years from date of Substantial Completion.

PART 2 - PRODUCTS

2.1 CARPET TILE -CPT-2 (Walk-off)

- A. **Manufacturers:** Subject to compliance with requirements, provide products by one of the following:
 - 1. Mohawk Group, Brand; Lees
- B. Style Name: First Step II
- C. Style Number QL315
- D. Collection: Tuff Stuff II
- E. Color: 983 Iron Ore.
- F. Fiber Type: Duracolor Premium Nylon.
- G. Surface Texture: Texture Performance Cut & Loop.
- H. Density: 6739 oz./cu. yd. .
- I. Weight Density: 256,082
- J. Stitches: 8.5 per inch (mm).
- K. Gage: 5/32".
- L. Face Weight: 38.0 oz./sq. yd. (g/sq. m).
- M. Backing Material: EcoFlex ICT.
- N. Size: 24 by 24 inches (610 by 610 mm).

- O. Applied Soil-Resistance Treatment: Manufacturer's standard material.
- P. Installation Method: Brick Ashlar

2.2 CARPET TILE -CPT-1 (Color and Style for areas listed below)

- A. **Manufacturers:** Subject to compliance with requirements, provide products by one of the following:
 - 1. Mohawk Group, Brand; Bigelow
 - a. Collection: Iconic Earth
 - 2. Dorm bedroom:
 - a. Style: Statement Stone
 - b. Color: 152 Rugged Range
 - c. Pattern: 24 x 24, brick ashlar
 - 3. Dorm hallway:
 - a. Style: Drifted Ground
 - b. Color: 859 Downing Stone
 - c. Pattern: 12x36, random, side to side of hallway
 - 4. Dorm lounge and classrooms:
 - a. Style: Drifted Ground
 - b. Color: 358 Classic Ridge
 - c. Pattern: 12x36, Herringbone
 - 5. Classroom corridors:
 - a. Style: Drifted Ground
 - b. Color: 358 Classic Ridge
 - c. Pattern: 12x36, random, side to side of hallway
- B. Construction: Tufted
- C. Surface Texture: Textured patterned loop.
- D. Gauge: 1/12
- E. Fiber Type: Colorstrand SD Nylon.
- F. Pile Characteristic: Patterned-loop.
- G. Pile Weight: 16 oz./sq. yd. (542 g/sq. m).
- H. Backing System: EcoFlex ICT.
- I. Applied Soil-Resistance Treatment: Manufacturer's standard material.

2.3 INSTALLATION ACCESSORIES

- A. Trowelable Leveling and Patching Compounds: Latex-modified, hydraulic-cement-based formulation provided or recommended by carpet tile manufacturer.

- B. Adhesives: Water-resistant, mildew-resistant, nonstaining, pressure-sensitive type to suit products and subfloor conditions indicated, that complies with flammability requirements for installed carpet tile and is recommended by carpet tile manufacturer for releasable installation.

PART 3 - EXECUTION

3.1 EXAMINATION

- A. Examine substrates, areas, and conditions, with Installer present, for compliance with requirements for maximum moisture content, alkalinity range, installation tolerances, and other conditions affecting carpet tile performance. Examine carpet tile for type, color, pattern, and potential defects.
- B. Concrete Subfloors: Verify that concrete slabs comply with ASTM F 710 and the following:
 - 1. Slab substrates are dry and free of curing compounds, sealers, hardeners, and other materials that may interfere with adhesive bond. Determine adhesion and dryness characteristics by performing bond and moisture tests recommended by carpet tile manufacturer.
 - 2. Subfloor finishes comply with requirements specified in Section 033000 "Cast-in-Place Concrete" for slabs receiving carpet tile.
 - 3. Subfloors are free of cracks, ridges, depressions, scale, and foreign deposits.
- C. Proceed with installation only after unsatisfactory conditions have been corrected.

3.2 PREPARATION

- A. General: Comply with CRI 104, Section 6.2, "Site Conditions; Floor Preparation," and with carpet tile manufacturer's written installation instructions for preparing substrates indicated to receive carpet tile installation.
- B. Use trowelable leveling and patching compounds, according to manufacturer's written instructions, to fill cracks, holes, depressions, and protrusions in substrates. Fill or level cracks, holes and depressions **1/8 inch (3 mm)** wide or wider and protrusions more than **1/32 inch (0.8 mm)** unless more stringent requirements are required by manufacturer's written instructions.
- C. Remove coatings, including curing compounds, and other substances that are incompatible with adhesives and that contain soap, wax, oil, or silicone, without using solvents. Use mechanical methods recommended in writing by carpet tile manufacturer.
- D. Broom and vacuum clean substrates to be covered immediately before installing carpet tile.

3.3 INSTALLATION

- A. General: Comply with CRI 104, Section 14, "Carpet Modules," and with carpet tile manufacturer's written installation instructions.
- B. Installation Method: As recommended in writing by carpet tile manufacturer.

- C. Maintain dye lot integrity. Do not mix dye lots in same area.
- D. Cut and fit carpet tile to butt tightly to vertical surfaces, permanent fixtures, and built-in furniture including cabinets, pipes, outlets, edgings, thresholds, and nosings. Bind or seal cut edges as recommended by carpet tile manufacturer.
- E. Extend carpet tile into toe spaces, door reveals, closets, open-bottomed obstructions, removable flanges, alcoves, and similar openings.
- F. Maintain reference markers, holes, and openings that are in place or marked for future cutting by repeating on finish flooring as marked on subfloor. Use nonpermanent, nonstaining marking device.
- G. Install pattern parallel to walls and borders.

3.4 CLEANING AND PROTECTION

- A. Perform the following operations immediately after installing carpet tile:
 - 1. Remove excess adhesive, seam sealer, and other surface blemishes using cleaner recommended by carpet tile manufacturer.
 - 2. Remove yarns that protrude from carpet tile surface.
 - 3. Vacuum carpet tile using commercial machine with face-beater element.
- B. Protect installed carpet tile to comply with CRI 104, Section 16, "Protecting Indoor Installations."
- C. Protect carpet tile against damage from construction operations and placement of equipment and fixtures during the remainder of construction period. Use protection methods indicated or recommended in writing by carpet tile manufacturer.

END OF SECTION 096813

SECTION 096816 - SHEET CARPETING

PART 1 - GENERAL

1.1 RELATED DOCUMENTS

- A. Drawings and general provisions of the Contract, including General and Supplementary Conditions and Division 01 Specification Sections, apply to this Section.

1.2 SUMMARY

- A. Section Includes:

- 1. Tufted carpet.
- 2. Carpet cushion.

- B. Related Requirements:

- 1. Section 024119 "Selective Demolition" for removing existing floor coverings.
- 2. Section 096513 "Resilient Base and Accessories" for resilient wall base and accessories installed with carpet.
- 3. Section 096813 "Tile Carpeting" for modular carpet tiles.

1.3 PREINSTALLATION MEETINGS

- A. Preinstallation Conference: Conduct conference at Project site.

- 1. Review methods and procedures related to carpet installation including, but not limited to, the following:
 - a. Review delivery, storage, and handling procedures.
 - b. Review ambient conditions and ventilation procedures.
 - c. Review subfloor preparation procedures.

1.4 ACTION SUBMITTALS

- A. Product Data: For each type of product.

- 1. Include manufacturer's written data on physical characteristics and durability.
- 2. Include manufacturer's written installation recommendations for each type of substrate.

- B. Samples for Verification: For each of the following products and for each color and texture required. Label each Sample with manufacturer's name, material description, color, pattern, and designation indicated on Drawings and in schedules.

- 1. Carpet: 12-inch- (300-mm-) square Sample.

2. Exposed Edge, Transition, and Other Accessory Stripping: 12-inch- (300-mm-) long Samples.
3. Carpet Cushion: 6-inch- (150-mm-) square Sample.
4. Carpet Seam: 6-inch (150-mm) Sample.

1.5 INFORMATIONAL SUBMITTALS

- A. Qualification Data: For Installer.
- B. Sample Warranties: For special warranties.

1.6 CLOSEOUT SUBMITTALS

- A. Maintenance Data: For carpet to include in maintenance manuals. Include the following:
 1. Methods for maintaining carpet, including cleaning and stain-removal products and procedures and manufacturer's recommended maintenance schedule.
 2. Precautions for cleaning materials and methods that could be detrimental to carpet and carpet cushion.

1.7 MAINTENANCE MATERIAL SUBMITTALS

- A. Furnish extra materials, from the same product run, that match products installed and that are packaged with protective covering for storage and identified with labels describing contents.
 1. Carpet: Full-width rolls equal to 5 percent of amount installed for each type indicated, but not less than 10 sq. yd. (8.3 sq. m).

1.8 QUALITY ASSURANCE

- A. Installer Qualifications: An experienced installer who has completed a minimum of 5 projects of comparable size and quality.

1.9 DELIVERY, STORAGE, AND HANDLING

- A. Comply with CRI's "CRI Carpet Installation Standard."
- B. Deliver carpet in original mill protective covering with mill register numbers and tags attached.

1.10 FIELD CONDITIONS

- A. Comply with CRI's "CRI Carpet Installation Standard" for temperature, humidity, and ventilation limitations.
- B. Environmental Limitations: Do not deliver or install carpet and carpet cushion until spaces are enclosed and weathertight, wet-work in spaces is complete and dry, and ambient temperature

and humidity conditions are maintained at levels planned for building occupants during the remainder of the construction period.

- C. Do not install carpet and carpet cushion over concrete slabs until slabs have cured, are sufficiently dry to bond with adhesive, and have pH range recommended by carpet manufacturer.
- D. Where demountable partitions or other items are indicated for installation on top of carpet, install carpet before installing these items.

1.11 WARRANTY

- A. Special Warranty for Carpet: Manufacturer agrees to repair or replace components of carpet installation that fail in materials or workmanship within specified warranty period.
 - 1. Warranty does not include deterioration or failure of carpet due to unusual traffic, failure of substrate, vandalism, or abuse.
 - 2. Failures include, but are not limited to, the following:
 - a. More than 10 percent loss of face fiber, edge raveling, snags, and runs.
 - b. Loss of tuft bind strength.
 - c. Excess static discharge.
 - d. Delamination.
 - 3. Warranty Period: 10 years from date of Substantial Completion.
- B. Special Warranty for Carpet Cushion: Manufacturer agrees to repair or replace components of carpet cushion installation that fail in materials or workmanship within specified warranty period.
 - 1. Warranty includes removal and replacement of carpet and accessories required by replacement of carpet cushion.
 - 2. Warranty does not include deterioration or failure of carpet cushion due to unusual traffic, failure of substrate, vandalism, or abuse.
 - 3. Failure includes, but is not limited to, permanent indentation or compression.
 - 4. Warranty Period: 10 years from date of Substantial Completion.

PART 2 - PRODUCTS

2.1 TUFTED CARPET (Priest Suite)

- A. **Manufacturers:** Subject to compliance with requirements, provide products by the following:
 - 1. **Mohawk Group (The); Mohawk Carpet, LLC.**
- B. Color: 747 Camel.
- C. Style: Lean-to.

- D. Fiber Content: 100 percent SmartStrand.
- E. Pile Weight: 32 oz./sq. yd. (g/sq. m).
- F. Roll Width: 12 feet (3.7 m).
- G. Applied Treatments:
 - 1. Applied Soil-Resistance Treatment: Manufacturer's standard material.
 - 2. Antimicrobial Treatment: Manufacturer's standard material.

2.2 CARPET CUSHION (Priest Suite Bedrooms)

- A. **Manufacturers:** Subject to compliance with requirements, provide products acceptable to carpet manufacturer.
- B. Traffic Classification: CCC Class I, moderate traffic.
- C. Polyurethane-Foam Cushion: Bonded.
 - 1. Thickness: .25 inches 6 (mm).
- D. Performance Characteristics:
 - 1. Critical Radiant Flux Classification: Not less than 0.45 W/sq. cm according to NFPA 253.

2.3 INSTALLATION ACCESSORIES

- A. Trowelable Leveling and Patching Compounds: Latex-modified, hydraulic-cement-based formulation provided or recommended by carpet manufacturer.
- B. Adhesives: Water-resistant, mildew-resistant, nonstaining type to suit products and subfloor conditions indicated, that complies with flammability requirements for installed carpet and is recommended or provided by carpet manufacturer.
- C. Tackless Carpet Stripping: Water-resistant plywood, in strips as required to match cushion thickness and that comply with CRI's "CRI Carpet Installation Standard."
- D. Seam Adhesive: Hot-melt adhesive tape or similar product recommended by carpet manufacturer for sealing and taping seams and butting cut edges at backing to form secure seams and to prevent pile loss at seams.

PART 3 - EXECUTION

3.1 EXAMINATION

- A. Examine substrates, areas, and conditions, with Installer present, for compliance with requirements for maximum moisture content, alkalinity range, installation tolerances, and other conditions affecting carpet performance.
- B. Examine carpet for type, color, pattern, and potential defects.
- C. Concrete Slabs: Verify that finishes comply with requirements specified in Section 033000 "Cast-in-Place Concrete" and that surfaces are free of cracks, ridges, depressions, scale, and foreign deposits.
 - 1. Moisture Testing: Perform tests so that each test area does not exceed **200 sq. ft. (18.6 sq. m)**, and perform no fewer than three tests in each installation area and with test areas evenly spaced in installation areas.
 - a. Anhydrous Calcium Chloride Test: ASTM F 1869. Proceed with installation only after substrates have maximum moisture-vapor-emission rate of **3 lb of water/1000 sq. ft. (1.36 kg of water/92.9 sq. m)** in 24 hours.
 - b. Relative Humidity Test: Using in situ probes, ASTM F 2170. Proceed with installation only after substrates have a maximum 75 percent relative humidity level measurement.
 - c. Perform additional moisture tests recommended in writing by adhesive and carpet manufacturers. Proceed with installation only after substrates pass testing.
- D. Proceed with installation only after unsatisfactory conditions have been corrected.

3.2 PREPARATION

- A. General: Comply with CRI's "CRI Carpet Installation Standard" and with carpet manufacturer's written installation instructions for preparing substrates.
- B. Use trowelable leveling and patching compounds, according to manufacturer's written instructions, to fill cracks, holes, depressions, and protrusions in substrates. Fill or level cracks, holes and depressions **1/8 inch (3 mm)** wide or wider, and protrusions more than **1/32 inch (0.8 mm)**, unless more stringent requirements are required by manufacturer's written instructions.
- C. Concrete Substrates: Remove coatings, including curing compounds, and other substances that are incompatible with adhesives and that contain soap, wax, oil, or silicone, without using solvents. Use mechanical methods recommended in writing by adhesive, carpet, and carpet cushion manufacturers.
- D. Broom and vacuum clean substrates to be covered immediately before installing carpet.

3.3 CARPET INSTALLATION

- A. Comply with CRI's "CRI Carpet Installation Standard" and carpet and carpet cushion manufacturers' written installation instructions for the following:
 - 1. Direct-glue-down installation.
 - 2. Stretch-in installation.
- B. Comply with carpet manufacturer's written instructions and Shop Drawings for seam locations and direction of carpet; maintain uniformity of carpet direction and lay of pile. At doorways, center seams under the door in closed position.
 - 1. Stretch-in Carpet Installation: Install carpet cushion seams at 90-degree angle with carpet seams.
- C. Do not bridge building expansion joints with carpet.
- D. Cut and fit carpet to butt tightly to vertical surfaces, permanent fixtures, and built-in furniture including cabinets, pipes, outlets, edgings and thresholds. Bind or seal cut edges as recommended by carpet manufacturer.
- E. Extend carpet into toe spaces, door reveals, closets, open-bottomed obstructions, removable flanges, alcoves, and similar openings.
- F. Maintain reference markers, holes, and openings that are in place or marked for future cutting by repeating on carpet as marked on subfloor. Use nonpermanent, nonstaining marking device.

3.4 CLEANING AND PROTECTION

- A. Perform the following operations immediately after installing carpet:
 - 1. Remove excess adhesive, seam sealer, and other surface blemishes using cleaner recommended by carpet manufacturer.
 - 2. Remove yarns that protrude from carpet surface.
 - 3. Vacuum carpet using commercial machine with face-beater element.
- B. Protect installed carpet to comply with CRI's "CRI Carpet Installation Standard."
- C. Protect carpet against damage from construction operations and placement of equipment and fixtures during the remainder of construction period. Use protection methods recommended in writing by carpet manufacturer and carpet cushion manufacturer and carpet adhesive manufacturer.

END OF SECTION 096816

**STUDY
172**

**IT
176**

**CUST.
186**

**LAB CLASS /
STORAGE
188**

25' - 10 1/4"

24' - 7 5/8"

14' - 10 1/4"

17' - 4"

15' - 11 5/8"

122113.A

122113.A

10' - 1 1/4"

172

2' - 8"

5.0

2' - 6"

064116.D

123661.C

H13
A111

188

H11
A111

064116.D

TABLES BY
OWNER

11' - 8 3/4"

8' - 1 1/2"

122113.A
123661.E

L1
A111

101100.A

188A

3' - 8"

7' - 7 1/4"

13' - 11 1/4"

3' - 4 3/8"

1' - 11 5/8"

A6
A400

B

064116.D

30" DEEP PLASTIC LAMINATE CLAD LAB STORAGE
CABINET W/ ADJUSTABLE SHELVES

AAD-01

Addendum 05 05/20/16

TYP @ TEMP.
WALL CORNER

3' - 7"

3' - 4"

20' - 8 3/8"

2' - 10 3/8"

3' - 0 1/4"

7

187

3' - 8"

177a

C13

INT. ELEV.

C14

INT. ELEV.

SCALE: 1/4" = 1'-0"

SCALE: 1/4" = 1'-0"

C

B

A



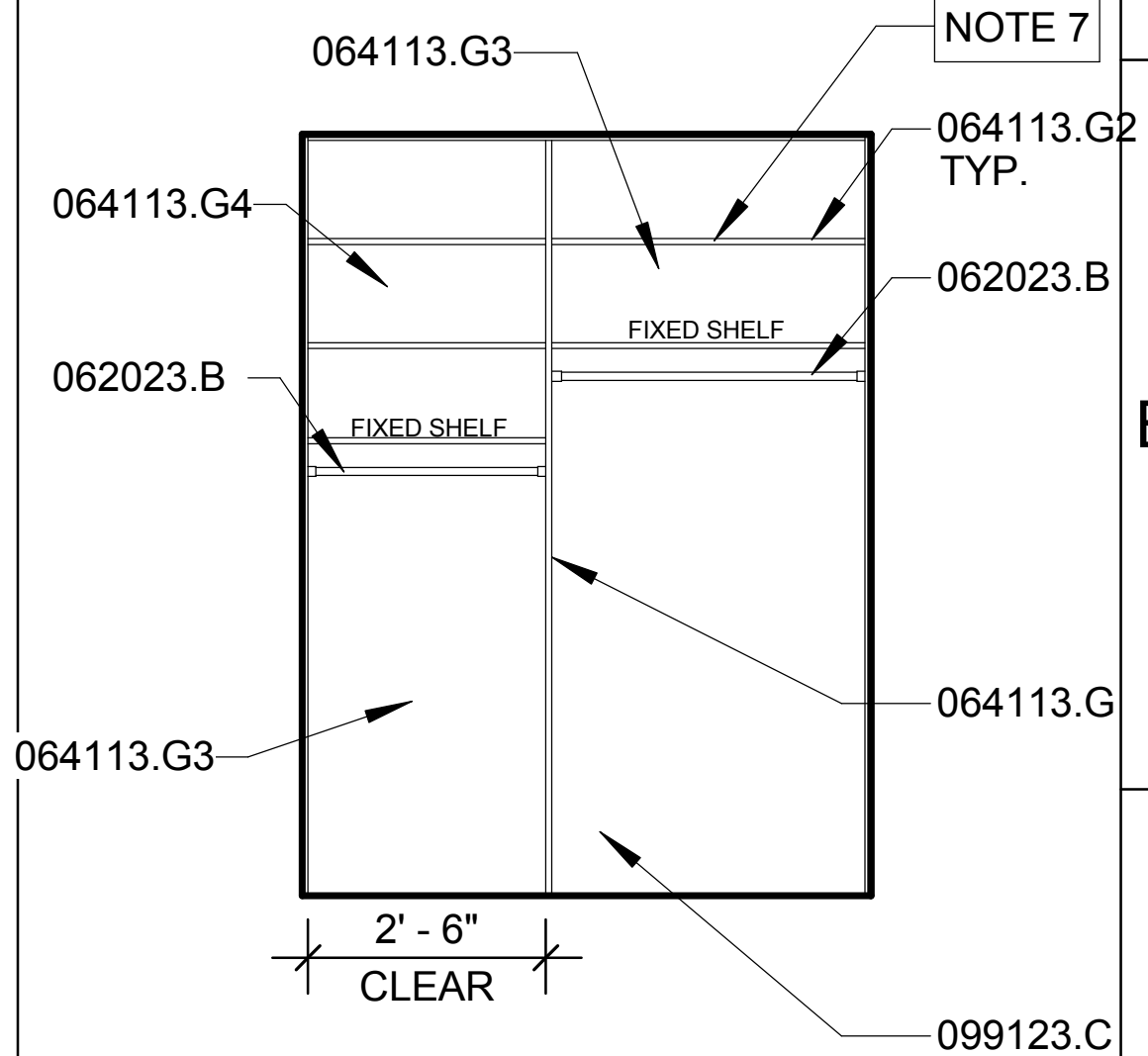
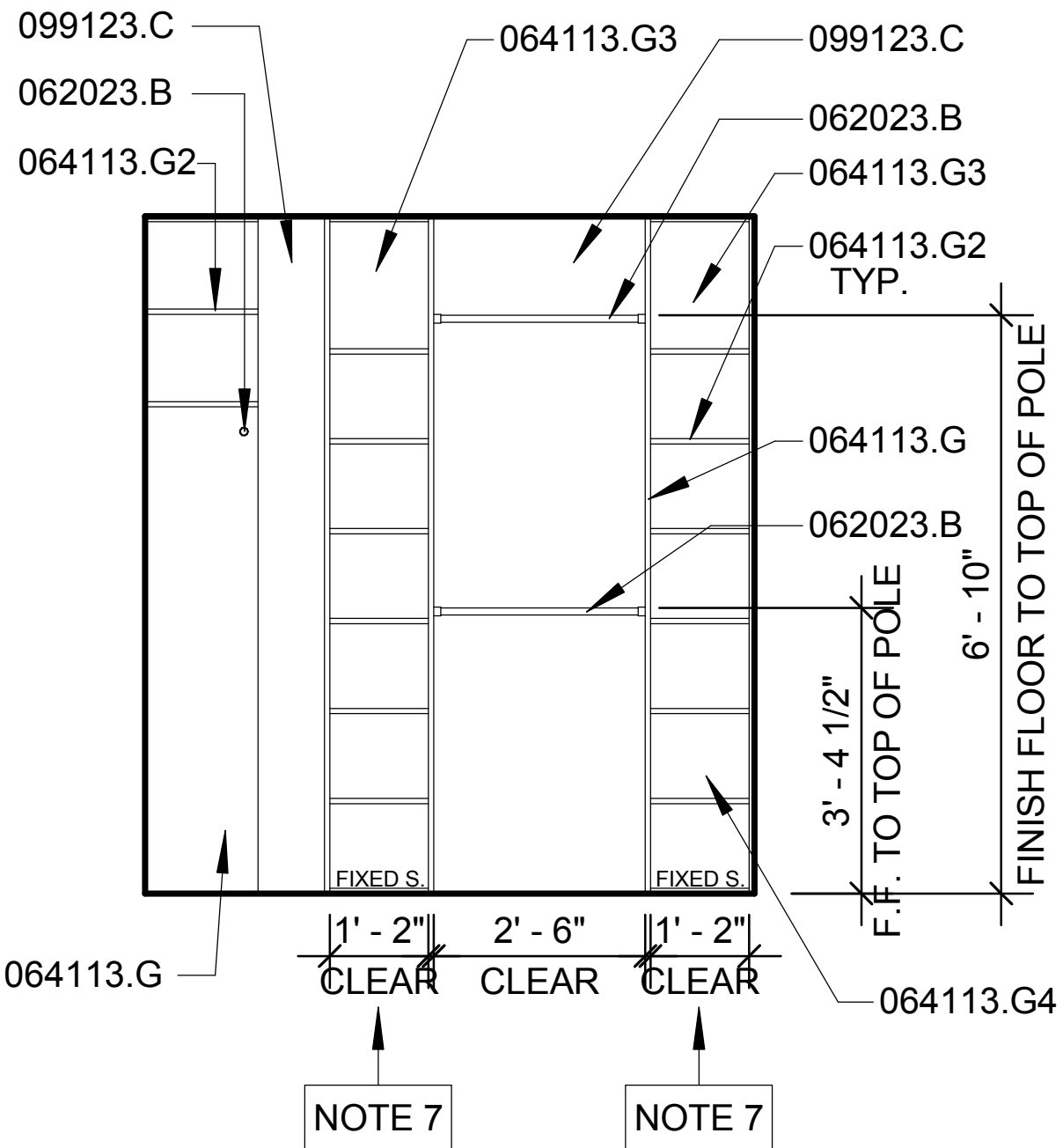
Key Plan

GRAPHIC SCALE

1/4" = 1'-0"



AAD-02
Addendum 05
05/20/16



V.

A13

INT. ELEV.

A14

INT. ELEV.

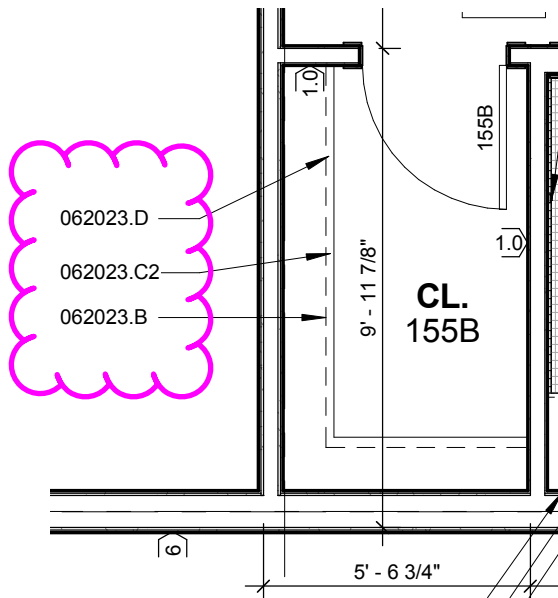
SCALE: 1/4" = 1'-0"

SCALE: 1/4" = 1'-0"

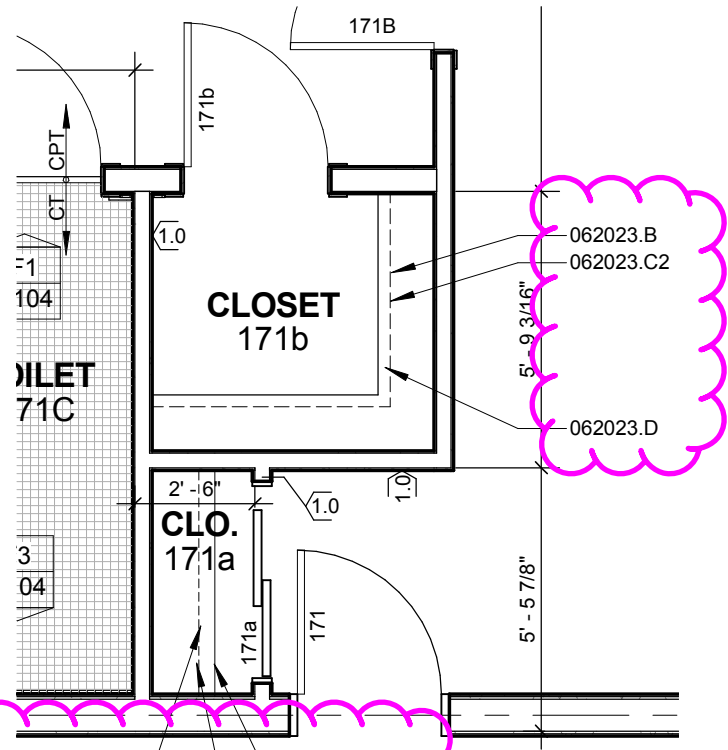
13

14

15



062023.D
 062023.C2
 062023.B



062023.B
 062023.C2
 062023.D

193013.A
 062023.B
 062023.D
 062023.C2

AAD-03
 Addendum 05
 05/20/16

KEYNOTE LEGEND

| | |
|-----------|---|
| 055113.B | STEEL GUARDRAIL ASSEMBLY - PAINT FINISH |
| 055113.F | 1 1/2" DIA. STEEL TUBE HANDRAIL - PAINT FINISH |
| 061053.A | WOOD BLOCKING |
| 062023.B | 1" O.D. CHROME RODS |
| 062023.C2 | CLOSET SHELF AND ROD SUPPORT BRACKETS @ 36" O.C. MAX. |
| 062023.D | CLOSET SHELF MOUNTED 5'-0" ABOVE FINISH FLOOR |
| 064113.C | WOOD VENEER FACED LAVATORY CABINET |
| 064113.D | CABINET PULL |
| 064113.G | 3/4" OAK VENEER PLYWOOD W/ HDWD EDGES |
| 064113.G2 | 3/4" OAK VENEER PLYWOOD FIXED CLOSET SHELVES W/ HDWD EDGES |
| 064113.G3 | 1/4" OAK VENEER PLYWOOD BACK PANEL |
| 064113.G4 | 24" DEEP CLOSET SHELVING UNITS OF 3/4" OAK VENEER PLYWOOD W/ HDWD EDGES |
| 087100.B | WALL STOP |
| 088300.A | SILVERED FLAT GLASS MIRROR - 3'-0" X 3'-6" |
| 092900.A | 5/8" GYPSUM BOARD, TYPE X |
| 093013.A | 4"X4" CERAMIC WALL TILE - STACKED PATTERN. BULLNOSE EDGE AT TRANSITION FROM TILE TO GWB |
| 093013.B | 2"X2" MOSAIC FLOOR TILE - STACKED PATTERN |
| 093013.B2 | 2"X2" BUILT-UP COVE BASE WITH BULLNOSE EDGE |
| 093013.C | EDGE OF TILE TO CARPET ALUMINUM TRANSITION STRIP |
| 099123.C | PAINT FINISH |
| 102800.C | TOILET PAPER DISPENSER |
| 102800.D | SHOWER CURTAIN ROD - HEAVY DUTY |
| 102800.E | ROBE HOOK |
| 102800.G | 24" TOWEL BAR |
| 102800.H | RECESSED MEDICINE CABINET WITH MIRROR DOOR |
| 122113.A | HORIZONTAL LOUVER BLINDS |
| 123661.C | SOLID SURFACE COUNTERTOP W/ 4" INTEGRAL BACKSPLASH |
| 224000.A | FLOOR DRAIN |
| 224000.C | SHOWER HEAD AND HANDLE IN BRUSHED NICKEL |
| 224000.E | FLOOR MOUNTED FLUSH VALVE TOILET |
| 224000.G | SINK - SEE MECHANICAL |
| 224000.H | 1 PIECE FIBERGLASS SHOWER ENCLOSURE WITH SHOWER ROD AND CURTAIN |
| 224000.I | CENTERSET 1-HANDLE BRUSHED NICKEL BATHROOM FAUCET |
| 265100.A | LIGHT FIXTURE - SEE ELECTRICAL |



3330 woods avenue
lincoln, ne 68510
402-326-1577
kclark@clark-architects.com



COLLABORATION

STRUCTURAL ENGINEER
Vector Structural Design, P.C.
601 Old Cheney Road
Lincoln, Nebraska 68512
402-975-8780

MECHANICAL/ELECTRICAL ENGINEER
Engineering Technologies, Inc.
825 M Street, Suite 200
Lincoln, Nebraska 68508
402-476-1273

CIVIL ENGINEER
Olsson Associates
601 P Street, Suite 200
Lincoln, Nebraska 68508
402-474-6311

AAD-04
Addendum 05
05/23/16

1.1