

## ADDENDUM #1 Lutz Office Tenant Improvement

1. Bid Date Change
    - The bid date will be moved to Tuesday, May 31<sup>st</sup>, 2016 due to the prior bid date falling on Memorial Day.
  2. A13.1 was not previously included in the construction documents – see attached.
  3. See attached meeting minutes from the Pre Bid Meeting held today.
- End of Addendum -

## Pre-Bid Meeting Agenda

### Lutz Office Tenant Improvement

1. Bid Date Change
  - The bid date will be moved to Tuesday, May 31<sup>st</sup>, 2016 due to the prior bid date falling on Memorial Day.
2. A13.1 was not previously included in the construction documents. **Issued with addendum.**
3. DLR Group will be issuing a second Addendum no later than this Friday, 20 May 2016.
4. Subcontractor invites:
  - All subs on subcontractor list that was include with the invited need to be invited for this project.
  - G.C.'s will be responsible for documenting that all the subs were invited to bid even if they decline. **This should be included with submitted Bid.**
5. The budget needs to be as cost effective as possible; voluntary alternates will be considered as part of the bid submission. DLR Group will need to approve any & all voluntary alternates. **Voluntary alternates should not be included in Base Bid – these will need to be noted separately.**
6. Questions from contractors:

**Have the plans been submitted for the permit?**

Not yet, but will be submitted this week; should be ready by early June.

**When will the decision be made on who would be selected?**

The week of the 30<sup>th</sup>.

What is the earliest the start date will be?

Planning on reviewing bids and making selections the week bids are due back. First part of June is the goal.

Are there lead times for fixtures for lighting an issue?

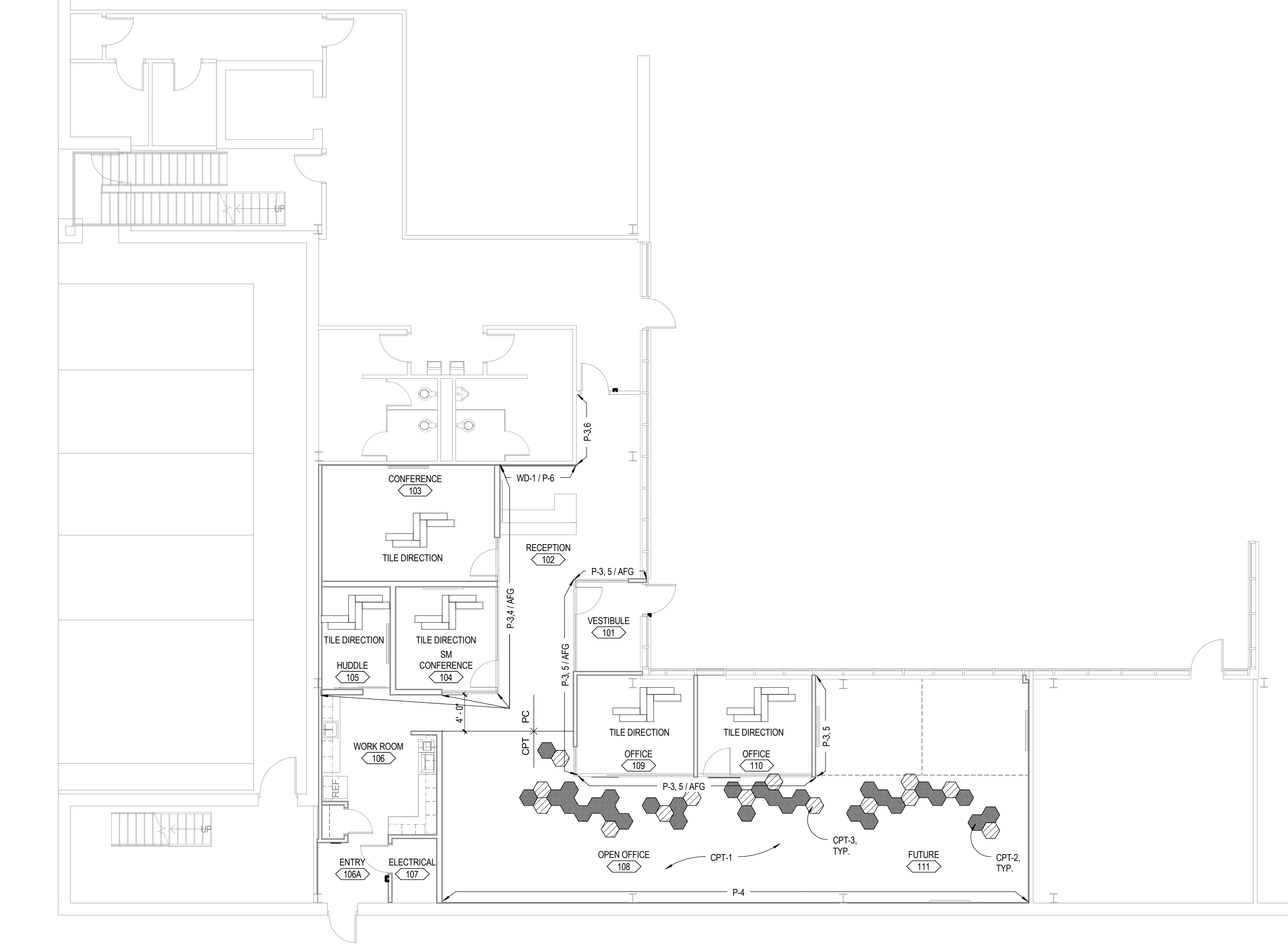
DLR Group checked on the lead times and while some will be tight, we will be open to temp fixtures for a temp certificate of occupancy.

Is there access to the space prior to the bid day?

Yes, requests can be made to see the space through Andy Widman with Tetrad.

Tetrad noted that we will be providing the precast for the infill base under the existing door to be removed.

-- End of Meeting --



 **FINISH FLOOR PLAN**  
SCALE: 1/8" = 1'-0"



**FINISH FLOOR PLAN**  
**LUTZ OFFICE TENANT IMPROVEMENT**

**A13.1**  
10-16212.00  
5/13/2016  
Revisions