

DOCUMENT 009113 – ADDENDA NUMBER 01

1.1 PROJECT INFORMATION

- A. Project Name: St Gregory the Great Dorm Addition.
- B. Owner: St Gregory the Great Seminary.
- C. Architect: Clark Architects Collaborative 3.
- D. Architect Project Number: 14021.
- E. Date of Addendum: 05/05/2016.

1.2 NOTICE TO BIDDERS

- A. This Addendum is issued to all registered plan holders pursuant to the Instructions to Bidders and Conditions of the Contract. This Addendum serves to clarify, revise, and supersede information in the Project Manual, Drawings, and previously issued Addenda. Portions of the Addendum affecting the Contract Documents will be incorporated into the Contract by enumeration of the Addendum in the Owner/Contractor Agreement.
- B. The Bidder shall acknowledge receipt of this Addendum in the appropriate space on the Bid Form.
- C. The date for receipt of bids is unchanged by this Addendum, at same time and location.
 - 1. Bid Date: May 24th, 2016.

1.3 ATTACHMENTS

- A. This Addendum includes the following attached Sheets:
 - 1. Architectural Sheet A111, Enlarged Plans and Interior Elevations, dated 05/02/2016, (new).
 - 2. A112, Schedules, Door Frames and Wall Types, dated 05/02/2016, (new).
- B. This Addendum includes the attached Addendum Drawings:
 - 1. Architectural Addendum Drawing AAD-01, dated 050516, revising Cover Sheet.
 - 2. Architectural Addendum Drawing AAD-02, dated 050516, revising Sheet A103.
 - 3. Architectural Addendum Drawing AAD-03, dated 050516, revising Sheet A107.

1.4 REVISIONS TO DIVISIONS 02 - 49 SPECIFICATION SECTIONS

- A. Specification Section 033000 – Cast-in Place Concrete, (not reissued).

1. Paragraph 2.13.A.4: Change the maximum nominal aggregate size to 1-inch (25 mm).
2. Paragraph 2.13.B.4: Change the maximum nominal aggregate size to 1-inch (25 mm)

B. Specification Section 083113 – Access Doors & Frames, (not reissued).

1. Paragraph 2.2.C: The flush access doors are to have 1-inch (25 mm) insulation with a minimum R=5 and are to have a neoprene seal around the perimeter of the door.

1.5 REVISIONS TO DRAWING SHEETS

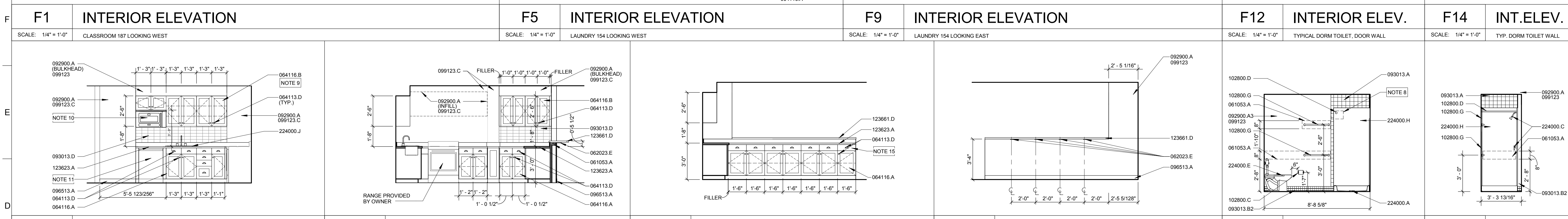
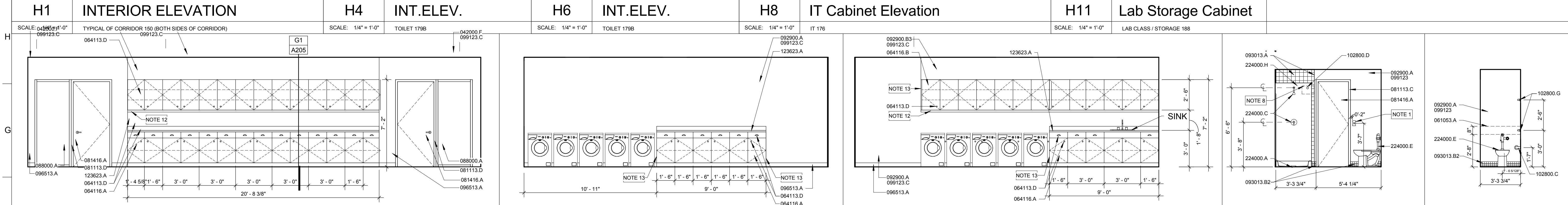
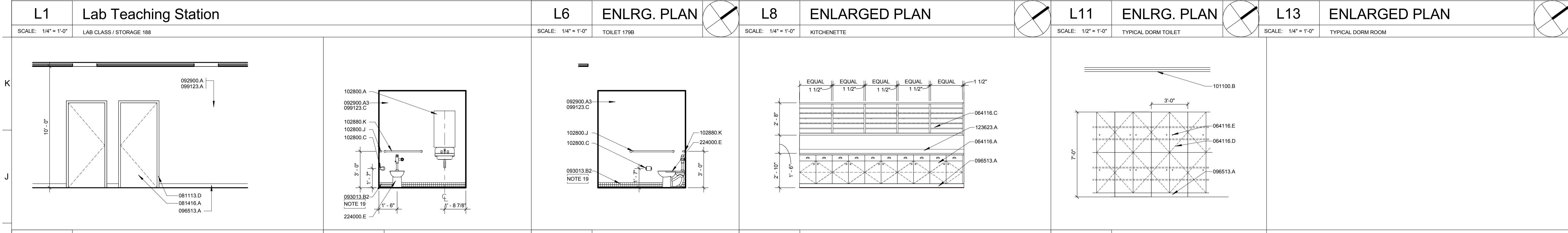
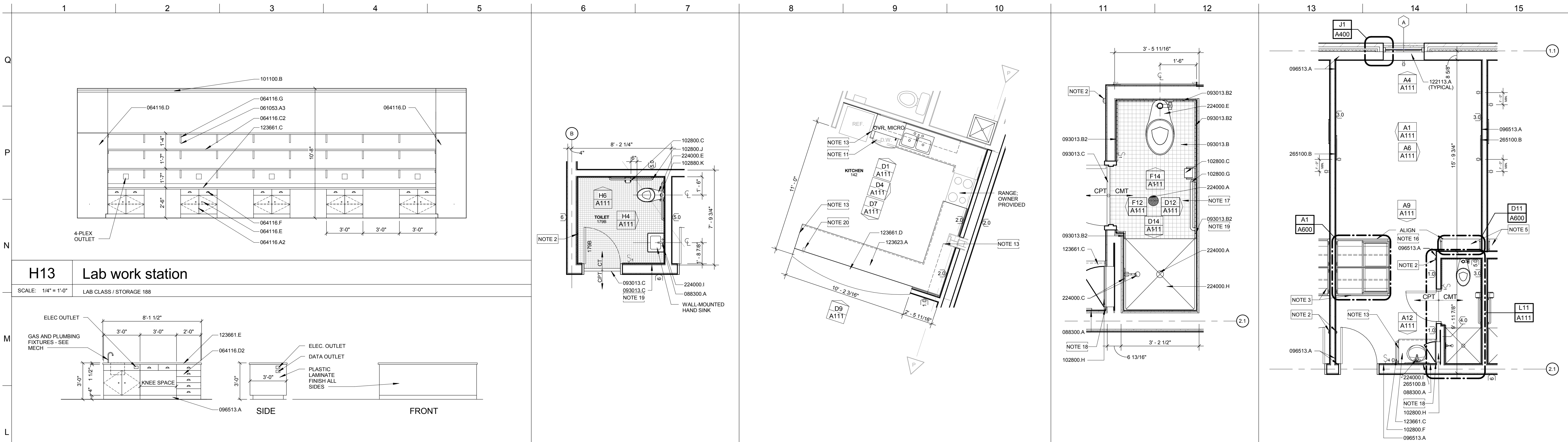
A. Sheet A103 - Dorm Addition – FP-1 Rooms 170-188 (not reissued).

1. Drawing A1: Added Access Panels in three locations accessing the attic space.

B. Sheet A107 - Dorm Addition – Mechanical Mezzanine over Dorms (not reissued).

1. Drawing A1: Added Access Panels in seven locations accessing the attic space

END OF DOCUMENT 009113



KEYNOTE LEGEND

- 042000 F 7 5/8" CONCRETE MASONRY UNIT
- 061053 A WOOD BLOCKING
- 061053 A3 PROVIDE WOOD BLOCKING BEHIND SHELF BRACKETS
- 062023 E COUNTER TOP SUPPORT BRACKET
- 064113 A WOOD VENEER FACED WARDROBE UNIT
- 064113 B WOOD VENEER FACED BOOK SHELF WITH ADJUSTABLE SHELVES
- 064113 C WOOD VENEER FACED LAVATORY CABINET
- 064113 D CABINET FULL
- 064116 A 24" DEEP PLASTIC LAMINATE CLAD BASE CABINET W/ ADJUSTABLE SHELF
- 064116 B 30" DEEP PLASTIC LAMINATE CLAD BASE CABINET W/ ADJ SHELF AND FULL DEPTH DRAWERS
- 064116 C 12" DEEP PLASTIC LAMINATE CLAD WALL CABINET W/ ADJUSTABLE SHELF
- 064116 D 14" DEEP PLASTIC LAMINATE CLAD OPEN WALL CABINET WITH ADJ PLASTIC LAMINATE CLAD SHELVES
- 064116 E 30" DEEP PLASTIC LAMINATE CLAD LAB STORAGE CABINET W/ ADJUSTABLE SHELVES
- 064116 D2 30" DEEP PLASTIC LAMINATE CLAD ISLAND CABINET W/ DRAWERS AND ADJ SHELVES
- 064116 E DRAWER PULL
- 064116 F SHELF SUPPORT BRACKET
- 064116 G HOLLOW METAL DOOR - PAINT FINISH
- 064116 H HOLLOW METAL DOOR FRAME - PAINT FINISH
- 064116 I PREFINISHED SOLID CORE WOOD DOOR
- 068000 A 14" FULLY TEMPERED FLOAT GLASS
- 068000 A SILVERED FLAT GLASS MIRROR - 3'-0" X 3'-0"
- 069200 A 5/8" GYPSUM BOARD, TYPE X
- 069200 A3 5/8" MOISTURE RESISTANT GYPSUM WALLBOARD
- 069200 B3 BOARD ON 3 5/8" METAL STUD FRAMING @ 16" O.C.
- 0693013 A 4"x4" CERAMIC WALL TILE - STACKED PATTERN
- 0693013 B 2"x2" MOSAIC FLOOR TILE - STACKED PATTERN
- 0693013 B 2"x2" BUILT-UP COVE BASE WITH BULLNOSE EDGE
- 0693013 C EDGE OF TILE TO CARPET ALUMINUM TRANSITION STRIP
- 0693013 D 3"x6" CERAMIC WALL TILE - STACKED PATTERN
- 0693013 D BULLNOSE EDGE AT TRANSITION FROM TILE TO GWB
- 069513 A 4" COVE VINYL BASE (WVB)
- 069513 B VINYL TRANSITION STRIP
- 069513 C INTERIOR PAINTING
- 069513 A PAINT FINISH - COLOR A
- 069513 C 2" DISPLAY RAIL AROUND THE PERIMETER OF THE ROOM
- 102800 A CHANNEL FRAMED MIRROR UNIT 20" X 30"
- 102800 C TOILET PAPER DISPENSER
- 102800 D SHOWER CURTAIN ROD - HEAVY DUTY
- 102800 F 18" TOWEL BAR
- 102800 G 24" TOWEL BAR
- 102800 H RECESSED MEDICINE CABINET WITH MIRROR DOOR
- 102800 J 42" GRAB BAR
- 102800 K 36" GRAB BAR
- 122113 A HORIZONTAL LOUVER BLINDS
- 123623 A PLASTIC LAMINATE CLAD, POSTFORMED COUNTERTOP
- 123661 D SOLID SURFACE MATERIAL WINDOW SILL
- 123661 C SOLID SURFACE COUNTERTOP W/ 4" INTEGRAL BACKSPLASH
- 123661 D SOLID SURFACE RAISED COUNTERTOP W/ 1 1/2" FRONT FACE WITH EASED TOP EDGE
- 123661 E SOLID SURFACE COUNTERTOP W/ 1 1/2" FRONT FACE W/ EASED TOP EDGE ON EACH SIDE - SEE MECH FOR UNDERMOUNT SINK
- 224000 A FLOOR DRAIN
- 224000 C SHOWER HEAD AND HANDLE IN BRUSHED NICKEL
- 224000 E FLOOR MOUNTED FLUSH VALVE TOILET
- 224000 D 1 PIECE FIBERGLASS SHOWER ENCLOSURE WITH SHOWER ROD AND CURTAIN
- 224000 I CENTERSET HANDLE BRUSHED NICKEL BATHROOM FAUCET
- 224000 J DOUBLE BASIN STAINLESS STEEL KITCHEN SINK AND FAUCET
- 265100 B NEW 2" HORIZONTAL LIGHT FIXTURE - SEE ELECTRICAL

CLARK architects collaborative 3

3330 woods avenue
lincoln, ne 68510
402-326-1577
kclark@clark-architects.com

BID SET

NOT TO BE USED FOR CONSTRUCTION

COLLABORATION

STRUCTURAL ENGINEER
Vector Structural Design, P.C.
601 Old Cheney Road
Lincoln, Nebraska 68508
402-975-8780

MECHANICAL/ELECTRICAL ENGINEER
Engineering Technologies, Inc.
825 M Street, Suite 200
Lincoln, Nebraska 68508
402-476-1273

CIVIL ENGINEER
Olsson Associates
601 P Street, Suite 200
Lincoln, Nebraska 68508
402-474-6311

St. Gregory the Great Seminary
Dormitory and Classroom Addition
800 Fletcher Road
Seward, Nebraska 68434

SHEET SPECIFIC NOTES, A111

- 1-GANG TOGGLE ELECTRICAL SWITCH AND STAINLESS STEEL WALL PLATE
- WALL MOUNTED DOOR STOP - COORDINATE WITH DOOR HARDWARE INSTALLATION AND PLACEMENT
- DORM ROOM WARDROBE - SEE DETAILS ON A600.
- 1-GANG DUPLEX ELECTRICAL OUTLET AND STAINLESS STEEL WALL PLATE
- DORM ROOM BOOKSHELF WITH STAIN FINISH - SEE DETAILS ON A600.
- CENTER LIGHT FIXTURE OVER MIRROR AND BASE CABINET BELOW
- ELECTRICAL SWITCHES AND 4-GANG STAINLESS STEEL WALL PLATE
- WOOD BLOCKING FOR SHOWER ROD
- 12" CLEAR INSIDE DEPTH, TYPICAL FOR UPPER CABINETS IN KITCHENETTE 131
- 30" OVER-THE-RANGE MICROWAVE, PROVIDED BY OWNER
- 24" WIDE BUILT-IN DISHWASHER, PROVIDED BY OWNER
- 2" VANCE MATCH WALL CABINET
- FINISH SIDE OF CABINET
- SIDE SPLASH - TO MATCH SOLID SURFACE COUNTERTOP WITH INTEGRAL BACKSPLASH
- INSTALL OUTLET TO THE DRAWER AREA FOR ITEMS PLUGGED IN ON THE COUNTER.
- ALUM FACE OF WARDROBE WITH FACE OF BOOKSHELF - TYPICAL IN ALL DORM ROOMS.
- FLOOR MUST SLOPE TO DRAIN 1/4" MINIMUM.
- SIDE SPLASH - TO MATCH SOLID SURFACE COUNTERTOP WITH INTEGRAL BACKSPLASH
- BUILT-UP COVE BASE TO INCLUDE COVE BASE OUTCORNERS AT ALL OUTSIDE CORNERS AND COVE BASE INCORPORATE AT ALL INSIDE CORNERS.
- INSTALL OUTLET TO THE DRAWER AREA FOR ITEMS PLUGGED IN ON THE COUNTER.

GRAPHIC SCALE CHART

1/4" = 1'-0"
0 2 4 6 8

1/2" = 1'-0"
0 2 4 6 8

1 1/2" = 1'-0"
0 2 4 6 8

DRAWING TITLE
Dorm Addition - Enlarged Plans and Interior Elevations

ARCHITECT: KAC

DRAWN BY: AAT

ISSUE DATE: 03/19/2016

PROJECT NO.: 14021

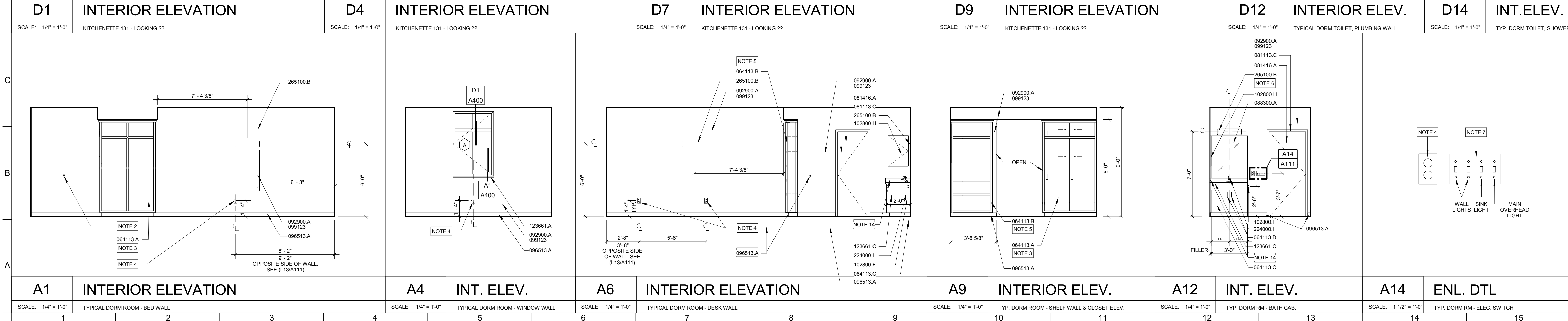
A111

KEYNOTE LEGEND

- 062023 E COUNTER TOP SUPPORT BRACKET
- 064113 A WOOD VENEER FACED WARDROBE UNIT
- 064113 B WOOD VENEER FACED BOOK SHELF WITH ADJUSTABLE SHELVES
- 064113 C WOOD VENEER FACED LAVATORY CABINET
- 064113 D CABINET FULL
- 064116 A 24" DEEP PLASTIC LAMINATE CLAD BASE CABINET W/ ADJUSTABLE SHELF
- 064116 B 30" DEEP PLASTIC LAMINATE CLAD BASE CABINET W/ ADJ SHELF AND FULL DEPTH DRAWERS
- 064116 C 12" DEEP PLASTIC LAMINATE CLAD WALL CABINET W/ ADJUSTABLE SHELF
- 064116 D 14" DEEP PLASTIC LAMINATE CLAD OPEN WALL CABINET WITH ADJ PLASTIC LAMINATE CLAD SHELVES
- 064116 E 30" DEEP PLASTIC LAMINATE CLAD LAB STORAGE CABINET W/ ADJUSTABLE SHELVES
- 064116 D2 30" DEEP PLASTIC LAMINATE CLAD ISLAND CABINET W/ DRAWERS AND ADJ SHELVES
- 064116 E DRAWER PULL
- 064116 F SHELF SUPPORT BRACKET
- 064116 G HOLLOW METAL DOOR - PAINT FINISH
- 064116 H HOLLOW METAL DOOR FRAME - PAINT FINISH
- 064116 I PREFINISHED SOLID CORE WOOD DOOR
- 068000 A 14" FULLY TEMPERED FLOAT GLASS
- 068000 A SILVERED FLAT GLASS MIRROR - 3'-0" X 3'-0"
- 069200 A 5/8" GYPSUM BOARD, TYPE X
- 069200 A3 5/8" MOISTURE RESISTANT GYPSUM WALLBOARD
- 069200 B3 BOARD ON 3 5/8" METAL STUD FRAMING @ 16" O.C.
- 0693013 A 4"x4" CERAMIC WALL TILE - STACKED PATTERN
- 0693013 B 2"x2" MOSAIC FLOOR TILE - STACKED PATTERN
- 0693013 B 2"x2" BUILT-UP COVE BASE WITH BULLNOSE EDGE
- 0693013 C EDGE OF TILE TO CARPET ALUMINUM TRANSITION STRIP
- 0693013 D 3"x6" CERAMIC WALL TILE - STACKED PATTERN
- 0693013 D BULLNOSE EDGE AT TRANSITION FROM TILE TO GWB
- 069513 A 4" COVE VINYL BASE (WVB)
- 069513 B VINYL TRANSITION STRIP
- 069513 C INTERIOR PAINTING
- 069513 A PAINT FINISH - COLOR A
- 069513 C 2" DISPLAY RAIL AROUND THE PERIMETER OF THE ROOM
- 102800 A CHANNEL FRAMED MIRROR UNIT 20" X 30"
- 102800 C TOILET PAPER DISPENSER
- 102800 D SHOWER CURTAIN ROD - HEAVY DUTY
- 102800 F 18" TOWEL BAR
- 102800 G 24" TOWEL BAR
- 102800 H RECESSED MEDICINE CABINET WITH MIRROR DOOR
- 102800 J 42" GRAB BAR
- 102800 K 36" GRAB BAR
- 122113 A HORIZONTAL LOUVER BLINDS
- 123623 A PLASTIC LAMINATE CLAD, POSTFORMED COUNTERTOP
- 123661 D SOLID SURFACE MATERIAL WINDOW SILL
- 123661 C SOLID SURFACE COUNTERTOP W/ 4" INTEGRAL BACKSPLASH
- 123661 D SOLID SURFACE RAISED COUNTERTOP W/ 1 1/2" FRONT FACE WITH EASED TOP EDGE
- 123661 E SOLID SURFACE COUNTERTOP W/ 1 1/2" FRONT FACE W/ EASED TOP EDGE ON EACH SIDE - SEE MECH FOR UNDERMOUNT SINK
- 224000 A FLOOR DRAIN
- 224000 C SHOWER HEAD AND HANDLE IN BRUSHED NICKEL
- 224000 E FLOOR MOUNTED FLUSH VALVE TOILET
- 224000 D 1 PIECE FIBERGLASS SHOWER ENCLOSURE WITH SHOWER ROD AND CURTAIN
- 224000 I CENTERSET HANDLE BRUSHED NICKEL BATHROOM FAUCET
- 224000 J DOUBLE BASIN STAINLESS STEEL KITCHEN SINK AND FAUCET
- 265100 B NEW 2" HORIZONTAL LIGHT FIXTURE - SEE ELECTRICAL

KEYNOTE LEGEND

- 062023 E COUNTER TOP SUPPORT BRACKET
- 064113 A WOOD VENEER FACED WARDROBE UNIT
- 064113 B WOOD VENEER FACED BOOK SHELF WITH ADJUSTABLE SHELVES
- 064113 C WOOD VENEER FACED LAVATORY CABINET
- 064113 D CABINET FULL
- 064116 A 24" DEEP PLASTIC LAMINATE CLAD BASE CABINET W/ ADJUSTABLE SHELF
- 064116 B 30" DEEP PLASTIC LAMINATE CLAD BASE CABINET W/ ADJ SHELF AND FULL DEPTH DRAWERS
- 064116 C 12" DEEP PLASTIC LAMINATE CLAD WALL CABINET W/ ADJUSTABLE SHELF
- 064116 D 14" DEEP PLASTIC LAMINATE CLAD OPEN WALL CABINET WITH ADJ PLASTIC LAMINATE CLAD SHELVES
- 064116 E 30" DEEP PLASTIC LAMINATE CLAD LAB STORAGE CABINET W/ ADJUSTABLE SHELVES
- 064116 D2 30" DEEP PLASTIC LAMINATE CLAD ISLAND CABINET W/ DRAWERS AND ADJ SHELVES
- 064116 E DRAWER PULL
- 064116 F SHELF SUPPORT BRACKET
- 064116 G HOLLOW METAL DOOR - PAINT FINISH
- 064116 H HOLLOW METAL DOOR FRAME - PAINT FINISH
- 064116 I PREFINISHED SOLID CORE WOOD DOOR
- 068000 A 14" FULLY TEMPERED FLOAT GLASS
- 068000 A SILVERED FLAT GLASS MIRROR - 3'-0" X 3'-0"
- 069200 A 5/8" GYPSUM BOARD, TYPE X
- 069200 A3 5/8" MOISTURE RESISTANT GYPSUM WALLBOARD
- 069200 B3 BOARD ON 3 5/8" METAL STUD FRAMING @ 16" O.C.
- 0693013 A 4"x4" CERAMIC WALL TILE - STACKED PATTERN
- 0693013 B 2"x2" MOSAIC FLOOR TILE - STACKED PATTERN
- 0693013 B 2"x2" BUILT-UP COVE BASE WITH BULLNOSE EDGE
- 0693013 C EDGE OF TILE TO CARPET ALUMINUM TRANSITION STRIP
- 0693013 D 3"x6" CERAMIC WALL TILE - STACKED PATTERN
- 0693013 D BULLNOSE EDGE AT TRANSITION FROM TILE TO GWB
- 069513 A 4" COVE VINYL BASE (WVB)
- 069513 B VINYL TRANSITION STRIP
- 069513 C INTERIOR PAINTING
- 069513 A PAINT FINISH - COLOR A
- 069513 C 2" DISPLAY RAIL AROUND THE PERIMETER OF THE ROOM
- 102800 A CHANNEL FRAMED MIRROR UNIT 20" X 30"
- 102800 C TOILET PAPER DISPENSER
- 102800 D SHOWER CURTAIN ROD - HEAVY DUTY
- 102800 F 18" TOWEL BAR
- 102800 G 24" TOWEL BAR
- 102800 H RECESSED MEDICINE CABINET WITH MIRROR DOOR
- 102800 J 42" GRAB BAR
- 102800 K 36" GRAB BAR
- 122113 A HORIZONTAL LOUVER BLINDS
- 123623 A PLASTIC LAMINATE CLAD, POSTFORMED COUNTERTOP
- 123661 D SOLID SURFACE MATERIAL WINDOW SILL
- 123661 C SOLID SURFACE COUNTERTOP W/ 4" INTEGRAL BACKSPLASH
- 123661 D SOLID SURFACE RAISED COUNTERTOP W/ 1 1/2" FRONT FACE WITH EASED TOP EDGE
- 123661 E SOLID SURFACE COUNTERTOP W/ 1 1/2" FRONT FACE W/ EASED TOP EDGE ON EACH SIDE - SEE MECH FOR UNDERMOUNT SINK
- 224000 A FLOOR DRAIN
- 224000 C SHOWER HEAD AND HANDLE IN BRUSHED NICKEL
- 224000 E FLOOR MOUNTED FLUSH VALVE TOILET
- 224000 D 1 PIECE FIBERGLASS SHOWER ENCLOSURE WITH SHOWER ROD AND CURTAIN
- 224000 I CENTERSET HANDLE BRUSHED NICKEL BATHROOM FAUCET
- 224000 J DOUBLE BASIN STAINLESS STEEL KITCHEN SINK AND FAUCET
- 265100 B NEW 2" HORIZONTAL LIGHT FIXTURE - SEE ELECTRICAL



KEYNOTE LEGEND

- 042000 F 7.5" CONCRETE MASONRY UNIT
- 044000 A 3.5" STRUCTURAL STEEL STUDS @ 24" O.C.
- 044000 B 6" STRUCTURAL STEEL STUDS @ 24" O.C.
- 044000 C 9" STRUCTURAL STEEL STUDS @ 24" O.C.
- 072100 G FILL WOOD WITH FIBERGLASS SOUND ATTENUATION SLANKETS
- 081113 D HOLLOW METAL DOOR FRAME - PAINT FINISH
- 081416 A PREFINISHED SOLID CORE WOOD DOOR
- 081416 B PREFINISHED SOLID CORE WOOD DOOR WITH FULL GLASS
- 081416 C PREFINISHED SOLID CORE WOOD DOOR WITH VISION LITE
- 084113 A ALUMINUM ENTRANCE - WIDE STYLE DOOR
- 084113 B ALUMINUM STOREFRONT - THERMALLY BROKEN CENTER GLAZED
- 088000 A ALUMINUM CASEMENT WINDOW
- 088000 B 1/4" FULLY TEMPERED FLOAT GLASS
- 088000 C FULLY TEMPERED INSULATING GLASS UNIT
- 092000 A 5/8" GYPSUM BOARD, TYPE X

CLARK
architects
collaborative 3

3330 woods avenue
lincoln, ne 68510
402-326-1577
kclark@clark-architects.com

BID SET

NOT TO BE USED FOR CONSTRUCTION

COLLABORATION

STRUCTURAL ENGINEER
Vector Structural Design, P.C.
601 Q Cheney Road
Lincoln, Nebraska 68512
402-975-8780

MECHANICAL/ELECTRICAL ENGINEER
Engineering Technologies, Inc.
825 M Street, Suite 200
Lincoln, Nebraska 68508
402-476-1273

CIVIL ENGINEER
Olson Associates
601 S Street, Suite 200
Lincoln, Nebraska 68508
402-474-6311

St. Gregory the Great Seminary
Dormitory and Classroom Addition
Seward, Nebraska 68434
800 Fletcher Road

DRAWING TITLE

Dorm Addition - Schedules and Door, Frame, & Wall Types

ARCHITECT: KAC
DRAWN BY: AAT
ISSUE DATE: 03/19/2016
PROJECT NO.: 14021

A112

DOOR SCHEDULE

Door No.	Door Size	F.R.	Elev.	DOOR	Mat	Fin.	Type	FRAME	Mat	Fin.	Hdw	Set	NOTES	Door No.
147A	3'-0" x 7'-0"			WD-A	WD	STN	HM	HM	HM	PNT	24.0			147A
148B	3'-0" x 7'-0"			WD-A	WD	STN	HM-1	HM	HM	PNT	11.0			148B
151A	3'-0" x 7'-0"			AL-A	AL	PNT	AL-3	AL	AL	PNT	26.0	2		151A
151B	3'-0" x 7'-0"			AL-A	AL	PNT	AL-1	AL	AL	PNT	5.0	2,3		151B
151G	3'-0" x 7'-0"			WD-A	WD	STN	HM-1	HM	HM	PNT	9.0			151G
152A	PR 3'-0" x 7'-0"			WD-B	WD	STN	HM-2	HM	HM	PNT	16.0			152A
152C	3'-0" x 7'-0"			WD-B	WD	STN	HM-1	HM	HM	PNT	16.0			152C
153	3'-0" x 7'-0"			WD-A	WD	STN	HM-1	HM	HM	PNT	13.0	1		153
154	3'-0" x 7'-0"			WD-A	WD	STN	HM-1	HM	HM	PNT	15.0	1		154
155	3'-0" x 7'-0"			WD-A	WD	STN	WD-1	WD	STN	24.0	1			155
155A	3'-0" x 7'-0"			WD-A	WD	STN	WD-1	WD	STN	24.0				155A
156	3'-0" x 7'-0"	20		WD-C	WD	STN	HM-1	HM	PNT	15.0	1,4			156
156A	2'-6" x 7'-0"			WD-A	WD	STN	HM-1	HM	PNT	24.0				156A
157	3'-0" x 7'-0"	20		WD-A	WD	STN	HM-1	HM	PNT	15.0	1,4			157
157A	2'-6" x 7'-0"			WD-A	WD	STN	HM-1	HM	PNT	24.0				157A
157B	3'-0" x 7'-0"	20		WD-A	WD	STN	HM-1	HM	PNT	15.0	1,4			157B
158	3'-0" x 7'-0"	20		WD-A	WD	STN	HM-1	HM	PNT	15.0	1,4			158
158A	2'-6" x 7'-0"			WD-A	WD	STN	HM-1	HM	PNT	24.0				158A
159	3'-0" x 7'-0"	20		WD-A	WD	STN	HM-1	HM	PNT	15.0	1,4			159
159A	2'-6" x 7'-0"			WD-A	WD	STN	HM-1	HM	PNT	24.0				159A
160	3'-0" x 7'-0"	20		WD-A	WD	STN	HM-1	HM	PNT	15.0	1,4			160
160A	2'-6" x 7'-0"			WD-A	WD	STN	HM-1	HM	PNT	24.0				160A
161	3'-0" x 7'-0"	20		WD-A	WD	STN	HM-1	HM	PNT	15.0	1,4			161
161A	2'-6" x 7'-0"			WD-A	WD	STN	HM-1	HM	PNT	24.0				161A
162	3'-0" x 7'-0"	20		WD-A	WD	STN	HM-1	HM	PNT	15.0	1,4			162
162A	2'-6" x 7'-0"			WD-A	WD	STN	HM-1	HM	PNT	24.0				162A
163	3'-0" x 7'-0"	20		WD-A	WD	STN	HM-1	HM	PNT	15.0	1,4			163
163A	2'-6" x 7'-0"			WD-A	WD	STN	HM-1	HM	PNT	24.0				163A
164	3'-0" x 7'-0"	20		WD-A	WD	STN	HM-1	HM	PNT	15.0	1,4			164
164A	2'-6" x 7'-0"			WD-A	WD	STN	HM-1	HM	PNT	24.0				164A
165	3'-0" x 7'-0"	20		WD-A	WD	STN	HM-1	HM	PNT	15.0	1,4			165
165A	2'-6" x 7'-0"			WD-A	WD	STN	HM-1	HM	PNT	24.0				165A
166	3'-0" x 7'-0"	20		WD-A	WD	STN	HM-1	HM	PNT	15.0	1,4			166
166A	2'-6" x 7'-0"			WD-A	WD	STN	HM-1	HM	PNT	24.0				166A
167	3'-0" x 7'-0"	20		WD-A	WD	STN	HM-1	HM	PNT	15.0	1,4			167
167A	2'-6" x 7'-0"			WD-A	WD	STN	HM-1	HM	PNT	24.0				167A
168	3'-0" x 7'-0"	20		WD-A	WD	STN	HM-1	HM	PNT	15.0	1,4			168
168A	2'-6" x 7'-0"			WD-A	WD	STN	HM-1	HM	PNT	24.0				168A
169	3'-0" x 7'-0"	20		WD-A	WD	STN	HM-1	HM	PNT	15.0	1,4			169
169A	2'-6" x 7'-0"			WD-A	WD	STN	HM-1	HM	PNT	24.0				169A
170	3'-0" x 7'-0"	20		WD-A	WD	STN	HM-1	HM	PNT	15.0	1,4			170
170A	2'-6" x 7'-0"			WD-A	WD	STN	HM-1	HM	PNT	24.0				170A
171	3'-0" x 7'-0"	20		WD-A	WD	STN	HM-1	HM	PNT	14.0	1,4			171
171A	3'-0" x 7'-0"			AL-A	AL	PNT	AL-1	AL	PNT	1.0	2			171A
171b	PR 2'-2" x 7'-0" BP			WD-A	WD	STN	HM-4	HM	PNT	27.0				171b
171B	3'-0" x 7'-0"			WD-A	WD	STN	WD-1	WD	STN	24.0				171B
171b	3'-0" x 7'-0"			WD-A	WD	STN	WD-1	WD	STN	23.0				171b
171C	3'-0" x 7'-0"			WD-A	WD	STN	WD-1	WD	STN	24.0				171C
172	3'-0" x 7'-0"			AL-A	AL	PNT	AL-1	AL	PNT	2.0	2			172
173	3'-0" x 7'-0"			AL-A	AL	PNT	AL-6	AL	PNT	26.0	2			173
173A	3'-0" x 7'-0"			AL-A	AL	PNT	AL-7	AL	PNT	4.0	2,3,5			173A
174	PR 3'-0" x 7'-0"	45		WD-C	WD	STN	HM-2	HM	PNT	18.0	4			174
175	PR 3'-0" x 7'-0"			WD-A	WD	STN	HM-2	HM	PNT	17.0				175
175A	PR 3'-0" x 7'-0"			WD-A	WD	STN	HM-2	HM	PNT	20.0				175A
176	3'-0" x 7'-0"			WD-A	WD	STN	HM-1	HM	PNT	12.0				176
177a	PR 3'-0" x 7'-0"			AL-A	AL	PNT	AL-2	AL	PNT	7.0	2,3			177a
177b	PR 3'-0" x 7'-0"			WD-A	WD	STN	HM-1	HM	PNT	10.0				177b
177c	PR 3'-0" x 7'-0"			AL-A	AL	PNT	AL-5	AL	PNT	8.0	2,6			177c
178	PR 3'-0" x 7'-0"			AL-A	AL	PNT	AL-5	AL	PNT	8.0	2,3,5,6			178
178A	PR 3'-0" x 7'-0"			WD-A	WD	STN	HM-1	HM	PNT	10.0				178A
179	3'-0" x 7'-0"			WD-A	WD	STN	HM-1	HM	PNT	25.0				179
179B	3'-0" x 7'-0"			WD-A	WD	STN	HM-1	HM	PNT	11.0				179B
179C	3'-0" x 7'-0"			WD-A	WD	STN	HM-1	HM	PNT	12.0				179C
186	3'-0" x 7'-0"			WD-A	WD	STN	HM-3	HM	PNT	10.0				186
187	3'-0" x 7'-0"			WD-A	WD	STN	HM-3	HM	PNT	10.0				187
187A	3'-0" x 7'-0"			WD-A	WD	STN	HM-3	HM	PNT	21.0				187A
188A	3'-0" x 7'-0"			WD-C	WD	STN	HM-1	HM	PNT	21.0				188A

- DOOR SCHEDULE NOTES**
- ADHESIVE SOUND SEAL ON DOOR.
 - ALUMINUM DOORS AND FRAMES TO HAVE FACTORY PAINT FINISHES
 - REQUIRES POSITION SWITCH
 - REQUIRES MAG HOLD OPEN
 - REQUIRES CARD READER
 - REQUIRES DOOR OPERATOR

ROOM FINISH SCHEDULE

No.	Name	Floor Finish	Base	North Wall	East Wall	South Wall	West Wall	CEILING	NOTES	No.				
138	COMPUTER / STUDY	CPT	VWB	GWB	PNT	GWB	PNT	GWB	PNT	APC	138			
142	KITCHEN	VCT	VWB	GWB	PNT	GWB	PNT	-	-	APC	142			
143	DORM	EXTG	EXTG	-	-	-	-	-	-	GWB	PNT	1	143	
145	DORM	EXTG	EXTG	-	-	-	-	-	-	GWB	PNT	1	145	
147	PREST SUITE	CPT	VWB	GWB	PNT	GWB	PNT	GWB	PNT	GWB	PNT	1	147	
147A	BEDROOM	CPT	VWB	GWB	PNT	GWB	PNT	GWB	PNT	GWB	PNT	1	147A	
147B	CLOSET	CPT	VWB	GWB	PNT	GWB	PNT	GWB	PNT	GWB	PNT	1	147B	
147C	TOILET	CT	CT	GWB	PNT	GWB	PNT	GWB	PNT	GWB	PNT	1	147C	
147D	CLOSET	CPT	VWB	EXTG	EXTG	EXTG	EXTG	EXTG	EXTG	EXTG	EXTG	1	147D	
149	CORRIDOR	CPT	VWB	GWB	PNT	GWB	PNT	GWB	PNT	GWB	PNT	1	149	
149B	JANITOR	VCT	VWB	GWB	PNT	EXTG	PNT	EXTG	PNT	GWB	PNT	2	149B	
150	CORRIDOR	CPT	VWB	GWB	PNT	GWB	PNT	GWB	PNT	GWB	PNT	1	150	
151	CORRIDOR	CPT	VWB	GWB	PNT	GWB	PNT	GWB	PNT	APC	-	1	151	
151B	VEST.	CPT-2	VWB	GWB	PNT	GWB	PNT	GWB	PNT	GWB	PNT	1	151B	
151G	STAIR	CONC	GWB	PNT	GWB	PNT	GWB	PNT	GWB	PNT	GWB	PNT	4	151G
152	LOUNGE	CPT	VWB	GWB	PNT	GWB	PNT	GWB	PNT	APC	-	1	152	
153	PREST SUITE	CPT	VWB	GWB	PNT	GWB	PNT	GWB	PNT	GWB	PNT	1	153	
154	LAUNDRY	VCT	VWB	GWB	PNT	GWB	PNT	GWB	PNT	GWB	PNT	1	154	
155	BEDROOM	CPT	VWB	GWB	PNT	GWB	PNT	GWB	PNT	GWB	PNT	1	155	
155A	TOIL	CT	CT	GWB	PNT	GWB/CT	PNT	GWB	PNT	GWB	PNT	3	155A	
155B	CL	CPT	VWB	GWB	PNT	GWB	PNT	GWB	PNT	GWB	PNT	3	155B	
156	BARBERSHOP	VCT	VWB	GWB	PNT	GWB	PNT	GWB	PNT	GWB	PNT	1	156	
156A	TOIL	CT	CT	GWB/CT	PNT	GWB/CT	PNT	GWB	PNT	GWB	PNT	3	156A	
157	DORM	CPT	VWB	GWB	PNT	GWB	PNT	GWB	PNT	GWB	PNT	3	157	
157A	TOIL	CT	CT	GWB	PNT	GWB/CT	PNT	GWB	PNT	GWB	PNT	3	157A	
158	DORM	CPT	VWB	GWB	PNT	GWB	PNT	GWB	PNT	GWB	PNT	3	158	
158A	TOIL	CT	CT	GWB/CT	PNT	GWB/CT	PNT	GWB	PNT	GWB	PNT	3	158A	
159	DORM	CPT	VWB	GWB	PNT	GWB	PNT	GWB	PNT	GWB	PNT	3	159	
159A	TOIL	CT	CT	GWB	PNT	GWB/CT	PNT	GWB	PNT	GWB	PNT	3	159A	
160	DORM	CPT	VWB	GWB	PNT	GWB	PNT	GWB	PNT	GWB	PNT	3	160	
160A	TOIL	CT	CT	GWB/CT	PNT	GWB/CT	PNT	GWB	PNT	GWB	PNT	3	160A	
161	DORM	CPT	VWB	GWB	PNT	GWB	PNT	GWB	PNT	GWB	PNT	3	161	
161A	TOIL	CT	CT	GWB	PNT	GWB/CT	PNT	GWB	PNT	GWB	PNT	3	161A	
162	DORM	CPT	VWB	GWB	PNT	GWB	PNT	GWB	PNT	GWB	PNT	3	162	
162A	TOIL	CT	CT	GWB/CT	PNT	GWB/CT	PNT	GWB	PNT	GWB	PNT	3	162A	
163	DORM	CPT	VWB	GWB	PNT	GWB	PNT	GWB	PNT	GWB	PNT	3	163	
163A	TOIL	CT	CT	GWB	PNT	GWB/CT	PNT	GWB	PNT	GWB	PNT	3		

C402 Paving Plan
C403 Paving Plan
C501 Final Site Construction Plan
SL101 Parking Lot Lighting Plan

ARCHITECTURAL

A100 Dorm Addition - Demo Plans
A101 Dorm Addition Plan
A102 Dorm Addition - fp1 Rooms 142-169
A103 Dorm Addition - fp1 Rooms 170 - 188
A104 Dorm Addition - Priest Suites
A107 Dorm Addition - Mech. Mezz. over Dorms
A109 Dorm Addition - Roof Plan West Section
A110 Dorm Addition - Roof Plan East Section
A111 Dorm Addition - Enlarged Plans and Interior Elevations
A112 Dorm Addition - Schedules and Door, Frame, & Wall Types
A200 Dorm Addition - Exterior Elevations
A201 Dorm Addition - Exterior Elevations
A205 Dorm Addition - Building Sections
A300 Dorm Addition - Wall Sections
A301 Dorm Addition - Wall Sections
A400 Dorm Addition - Enlarged Details
A600 Dorm Addition - Millwork Details
A700 Dorm Addition - First Floor Reflected Ceiling Plan
A701 Dorm Addition - First Floor Reflected Ceiling Plan

STRUCTURAL

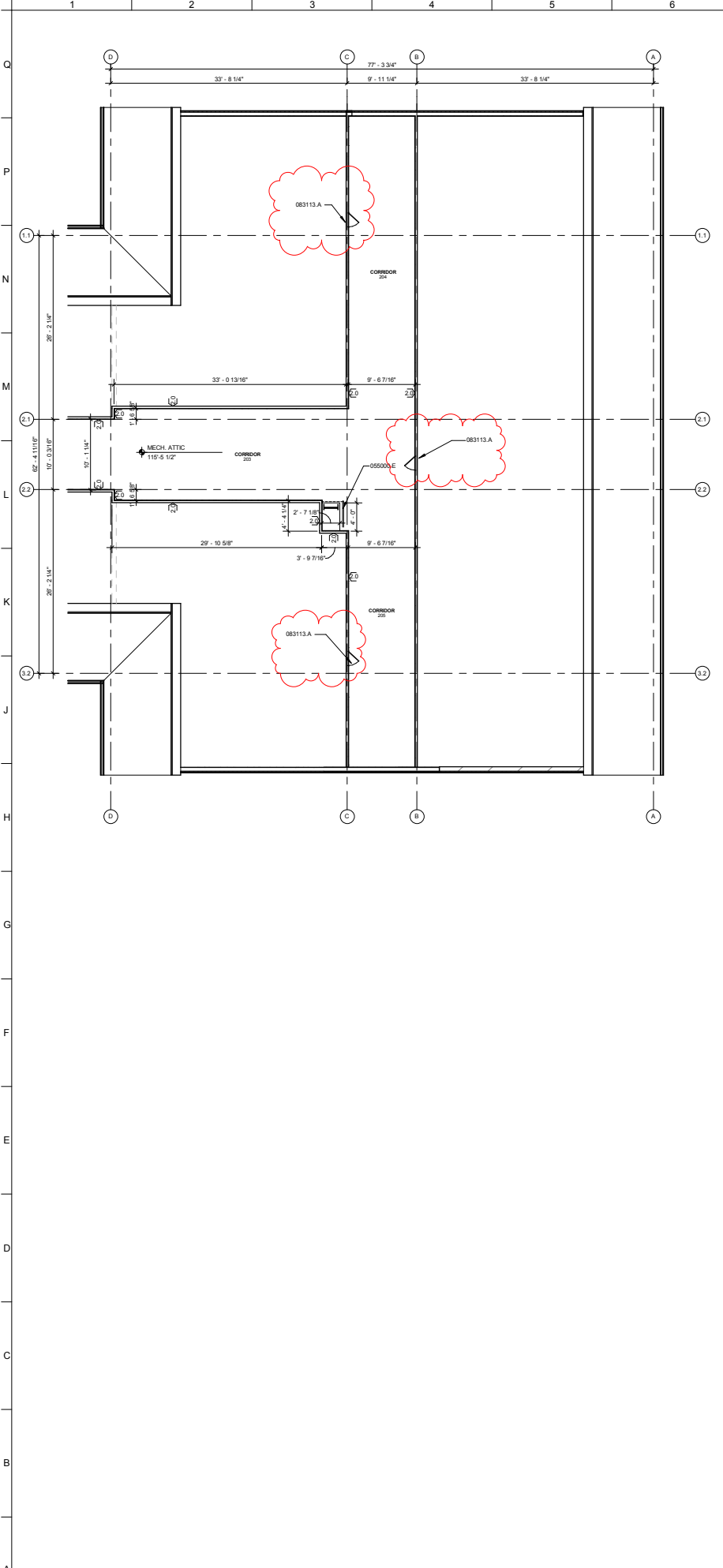
S101 Structural Notes
S102 Structural Schedules
S103 Typical Details
S201 Foundation Plan Area 'A'
S202 Foundation Plan Area 'B'
S203 Mezzanine Framing Plan Area 'A'
S204 Mezzanine Framing Plan Area 'B'
S205 Roof Framing Plan Area 'A'
S206 Roof Framing Plan Area 'B'
S301 Structural Details
S302 Structural Details
S303 Structural Details
S304 Structural Details
S305 Structural Details

ADDED SHEETS A701
AND S305 TO THE INDEX
OF DRAWINGS.
REMOVED AS100

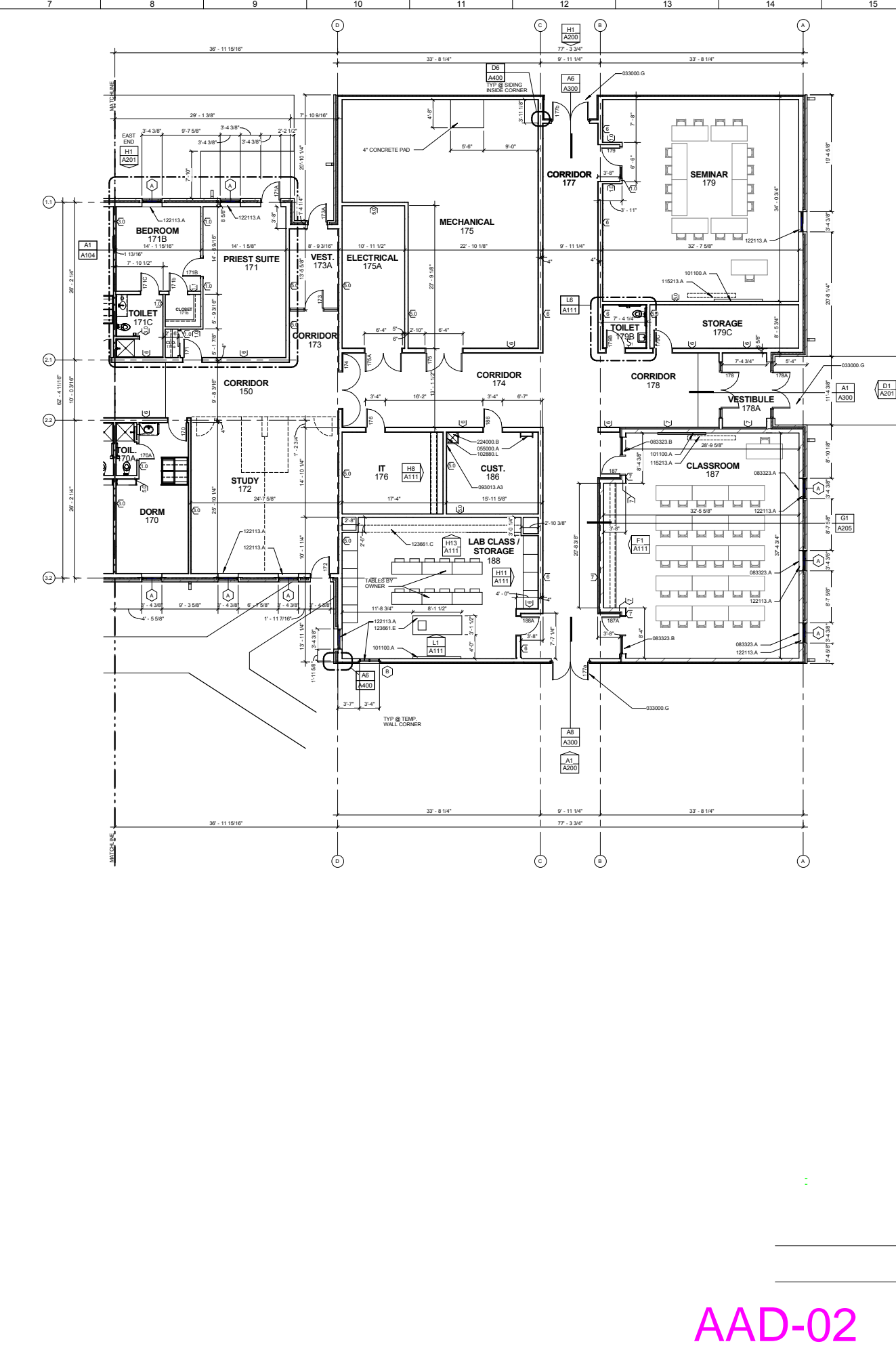
MECHANICAL

LF100 Loop Field Plan
LF101 Loop Field Details
M100 Overall First Floor Plan - Mechanical
M101B First Floor Plan - Area B - Mechanical Demolition

AAD-01



A1 MECHANICAL PENTHOUSE
 SCALE: 1/8" = 1'-0"
 DORM ADDITION ROOMS 170 - 190



A7 FIRST FLOOR PLAN
 SCALE: 1/8" = 1'-0"
 DORM ADDITION ROOMS 170 - 190

KEYNOTE LEGEND

- 033000.G CONCRETE STRUCTURAL SToop - SEE STRUCTURAL
- 055000.A STRUCTURAL STEEL LADDER
- 055000.E 3 RAIL GUARDRAIL OF 1 1/2" STEEL TUBING - 2" HIGH W/ CHAIN CLOSURE
- 083113.A 2'-0" WIDE X 3'-0" HIGH WALL ACCESS PANEL
- 083323.A 4W X 8H MANUALLY OPERATED STORM PROTECTION COLLING DOORS
- 083323.B 7W X 8H MANUALLY OPERATED STORM PROTECTION COLLING DOORS
- 085013.A3 4"x4" CERAMIC WALL TILE FROM TOP OF SERVICE SINK TO 5' ABOVE THE FLOOR - 12" PAST EACH EDGE OF MOP SINK
- 101100.A 8" WIDE X 4" HIGH WHITE BOARD W/ DISPLAY RAIL
- 102880.L MOP & BROOM HOLDER
- 115213.A SURFACE MOUNTED MANUALLY OPERATED FRONT PROJECTION SCREEN
- 122113.A HORIZONTAL LOWER BLINDS
- 123661.C SOLID SURFACE COUNTERTOP W/ 4" INTEGRAL BACKSPLASH
- 123661.E SOLID SURFACE COUNTERTOP W/ 1 1/2" FRONT FACE W/ EASED TOP EDGE ON EACH SIDE - SEE MECH FOR UNDERCOUNTER SINK
- 224000.B FLOOR MOUNTED MOP SINK - SEE MECHANICAL

BID SET

NOT TO BE USED FOR CONSTRUCTION

COLLABORATION

STRUCTURAL ENGINEER
 Vector Structural Design, P.C.
 601 Old Cheney Road
 Lincoln, Nebraska 68512
 402-975-8780

MECHANICAL/ELECTRICAL ENGINEER
 Engineering Technologies, Inc.
 125 M Street, Suite 200
 Lincoln, Nebraska 68508
 402-476-1273

CIVIL ENGINEER
 Olson Associates
 601 P Street, Suite 200
 Lincoln, Nebraska 68508
 402-474-6311

CLARK architects collaborative 3
 3330 woods avenue
 lincoln, ne 68510
 402-326-1577
 kclark@clark-architects.com

**St. Gregory the Great Seminary
 Dormitory and Classroom Addition**
 800 Fletcher Road Seward, Nebraska 68434

DRAWING TITLE:
 Dorm Addition - 1st Rooms
 170 - 188

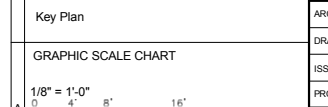
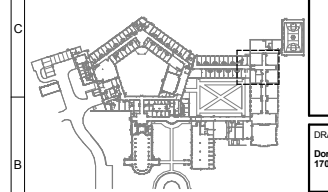
ARCHITECT: KAC
DRAWN BY: AAT
ISSUE DATE: 03/19/2016
PROJECT NO.: 14021

A103

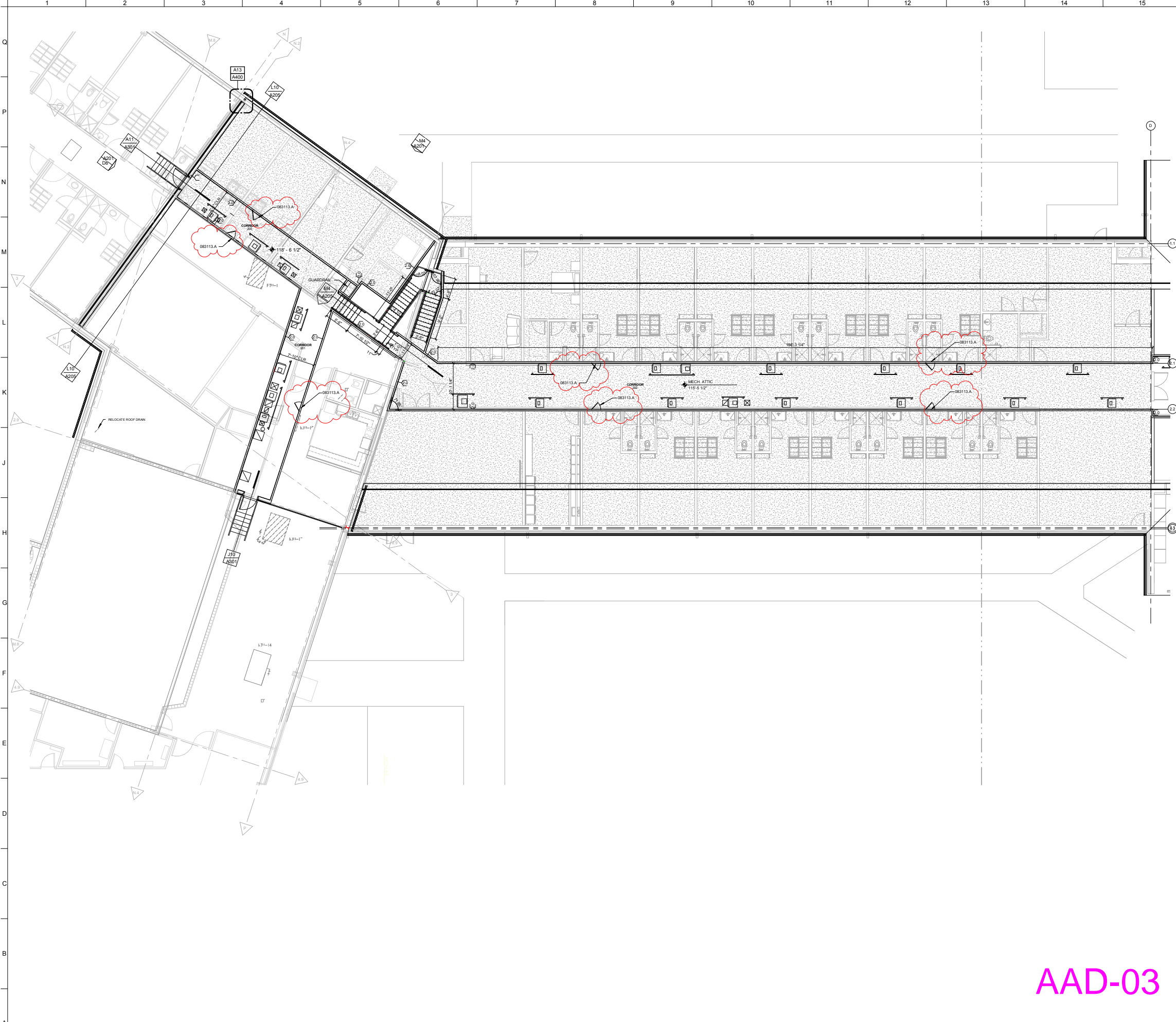
GRAPHIC SCALE CHART
 1/8" = 1'-0"
 0 4' 8' 16'

Key Plan

AAD-02



A103



KEYNOTE LEGEND
 083113.A 2'-0" WIDE X 2'-0" HIGH WALL ACCESS PANEL

CLARK
 architects
 collaborative 3

3330 woods avenue
 lincoln, ne 68510
 402-326-1577
 kclark@clark-architects.com

BID SET

NOT TO BE USED FOR CONSTRUCTION

COLLABORATION

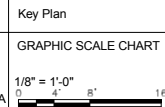
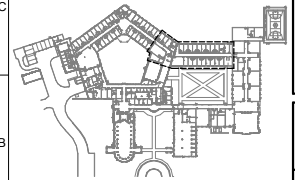
STRUCTURAL ENGINEER
 Vector Structural Design, P.C.
 601 Old Cheney Road
 Lincoln, Nebraska 68512
 402-975-8780

MECHANICAL/ELECTRICAL ENGINEER
 Engineering Technologies, Inc.
 825 M Street, Suite 200
 Lincoln, Nebraska 68508
 402-476-1273

CIVIL ENGINEER
 Olsson Associates
 601 P Street, Suite 200
 Lincoln, Nebraska 68508
 402-474-6311

**St. Gregory the Great Seminary
 Dormitory and Classroom Addition**
 800 Fletcher Road Seward, Nebraska 68434

AAD-03



A1 MECHANICAL PENTHOUSE

SCALE: 1/8" = 1'-0" DORM ADDITION ROOMS 170 - 190

DRAWING TITLE:
Dorm Addition - Mech. Mezz. over Dorms

ARCHITECT:	KAC
DRAWN BY:	AAT
ISSUE DATE:	03/19/2016
PROJECT NO.:	14021

A107