

EA Project No.: 15-2100

DATE OF ADDENDUM ISSUANCE: Friday, February 2, 2016

The Project Manual and Drawings dated January 15, 2016 for the above referenced project are hereby amended as follows:

Notice: This addendum is issued to all prospective bidders as an amendment to the Drawings and Project Manual for the Park Middle School Addition Project. Bidders shall acknowledge this addendum on the Bid Form. All information contained herein shall be fully incorporated into the Contract Documents as though originally included therein.

GENERAL INFORMATION

- Item AD-1 This Addendum consists of the following summary of addendum modifications (3 pages total) and referenced attachments indicated below:
- A. 'Attachment A: ME Group (Mechanical, Electrical, Plumbing Engineers)' – (2) drawing Sheets.
 - B. 'Attachment B: Pre-Construction Conference Agenda and Attendance Sign-in Sheet' (2 pages total) for documentation of an additional pre-bid conference conducted on site on Thursday February 4th, 2016 at 4:00 PM. See Addendum No. 1 for documentation of the first conference held Tuesday January 26th, 2016 at 3:30 PM.

MODIFICATIONS TO THE PROJECT MANUAL

None

MODIFICATIONS TO THE DRAWINGS

- Item AD-1 Sheet M401
- A. 'Energy Recovery Unit Schedule', Note 1: Add the following to acceptable VFD manufacturers as pre-approved equal: Yaskawa.
- Item AD-2 Sheet M402
- A. 'Pump Schedule', Note 4: Add the following to acceptable VFD manufacturers as pre-approved equal: Yaskawa.
- Item AD-3 Sheet E101
- A. Replace sheet in its entirety with attached Sheet 'E101 – First Floor & Mezzanine Lighting Plan' (see 'Attachment A').
 - B. Clarification: Lighting control design is based on the existing Andover lighting control system, location to be determined.
 - C. Detail 1: Added missing circuitry to type 'G2' fixtures.

- D. 'Key Notes': Delete notes 5, 6, and 7 regarding types 'B1' and 'B2' cove lighting (fixture types 'B1' and 'B2' do not exist in project).

Item AD-4 Sheet E201

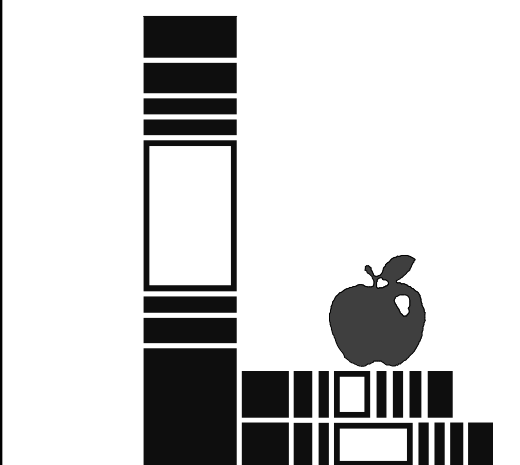
- A. Replace sheet in its entirety with attached Sheet 'E201 – First Floor & Mezzanine Power and Auxiliary Systems Plan' (see 'Attachment A').
- B. Details 1 and 2: Added smoke detector locations.
- C. Detail 1: Added typical note regarding wiring and device mounting requirements in masonry walls.

End of Addendum No. 1

ATTACHMENT A:

ME Group (Mechanical, Electrical, and Plumbing Engineers)

Modification	Sheet Affected
1. E101 – First Floor & Mezzanine Lighting Plan	E101
2. E201 – First Floor & Mezzanine Power and Auxiliary Systems Plan	E201



GENERAL NOTES (THIS SHEET)

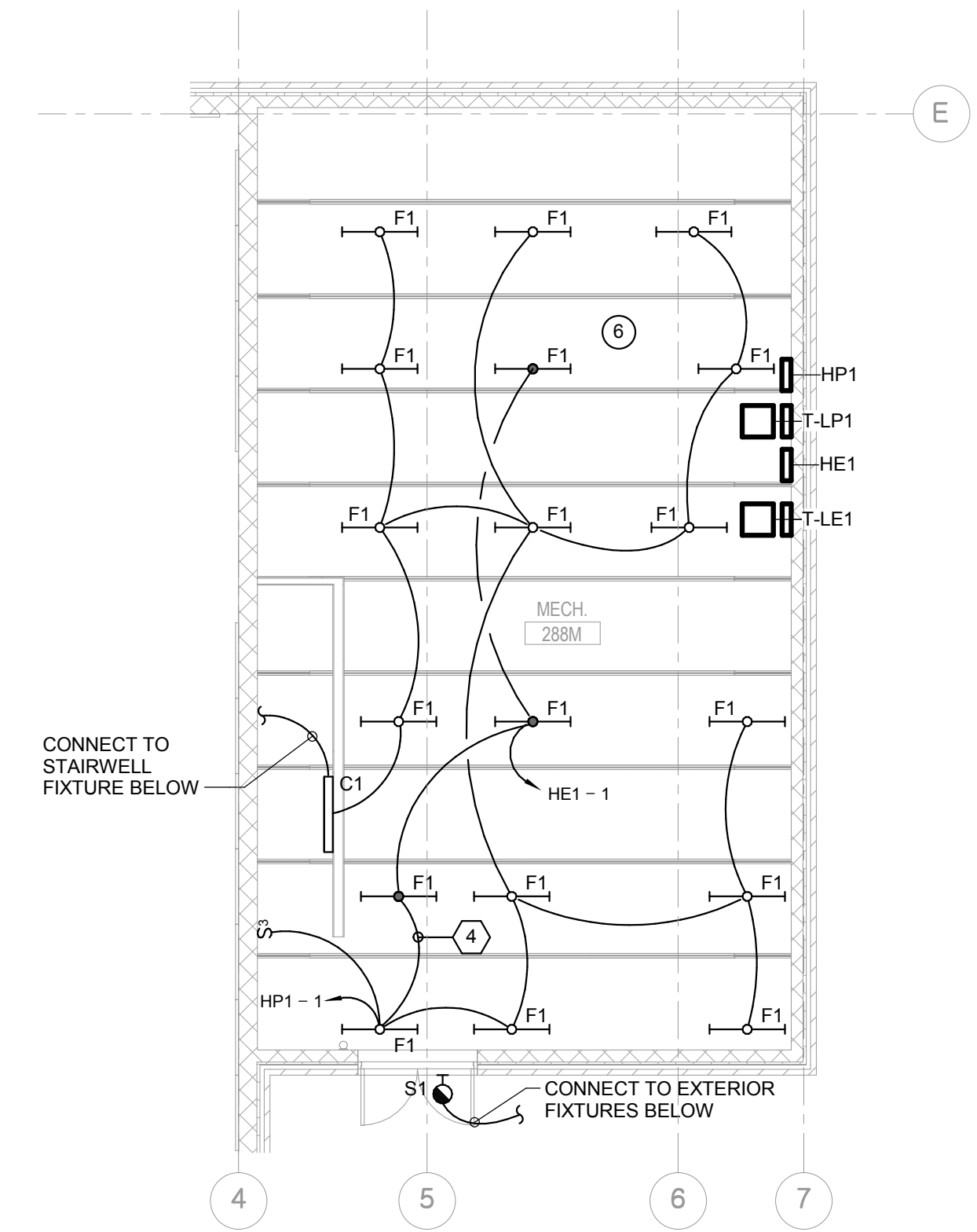
- EMERGENCY CIRCUIT IN MAIN CORRIDORS SHALL BE BREAKER SWITCHED AND SHALL BE ENERGIZED 24 HOURS A DAY.

KEY NOTES (THIS SHEET)

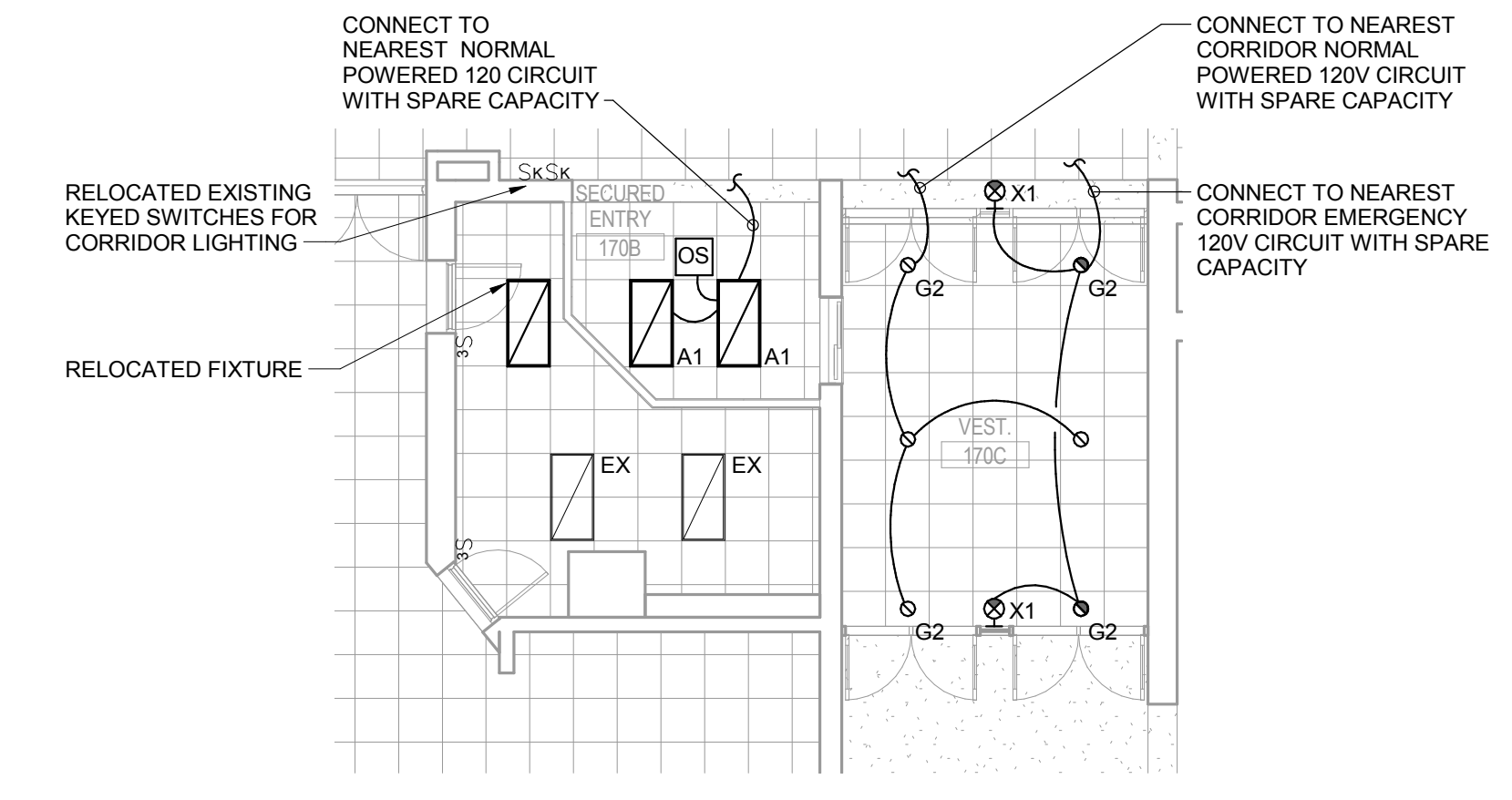
- CONTROL EXTERIOR LIGHTING THRU EXISTING AND/OVER LIGHTING CONTROL SYSTEM. PROVIDE 277V CONTACTOR AND ASSOCIATED RELAYS.
- EMERGENCY CORRIDOR CIRCUIT TO BE UTILIZED AS A NIGHT LIGHT CIRCUIT AND SHALL REMAIN ENERGIZED 24 HOURS A DAY.
- PROVIDE A TWO-POLE SWITCH WITH ON-OFF-RAISE-LOWER MOUNTED IN NEW 4" SQUARE BOX WITH MUD RING & BOX.
- ROUTE FIXTURES THRU A BODINE POWER TRANSFER DEVICE. IF THE LIGHTING CIRCUIT LOSES POWER, THE TRANSFER DEVICE SHALL SWITCH FIXTURES OVER TO EMERGENCY GENERATOR POWER.

LIGHTING SEQUENCES (THIS SHEET)

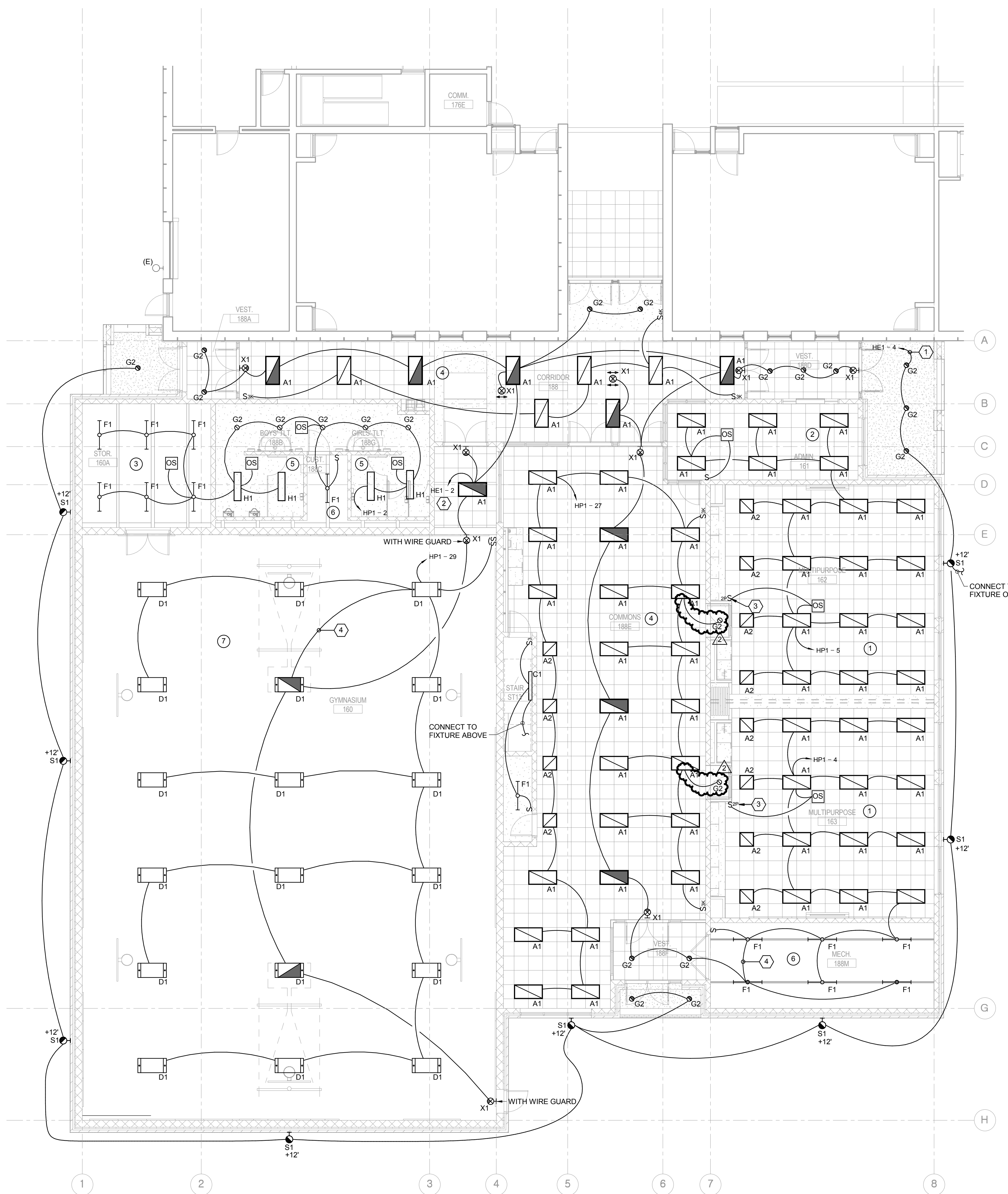
- CLASSROOMS: PROVIDE 2-POLE SWITCH WITH INTEGRAL ON-OFF-RAISE-LOWER CONTROLS. THIS SWITCH SHALL BE CONNECTED TO THE AREA OCCUPANCY SENSOR WITH CAT5 CABLING AND THEN CONNECTED TO EACH FIXTURE IN THE ROOM WITH CAT5 CABLING. THEN EACH FIXTURE SHALL BE PROGRAMMED AND CONTROLLED BY THE AREA'S 2-POLE SWITCH. THE FIXTURES NEAREST TO THE HEAD TEACHING WALL SHALL BE CONTROLLED SEPARATELY FROM THE REST OF THE AREA LIGHT FIXTURES. THIS AREA'S LIGHTING FIXTURES WILL BE FULLY DIMMABLE DOWN TO 1%.
- OFFICE: PROVIDE A SINGLE-POLE SWITCH WITH INTEGRAL ON-OFF-RAISE-LOWER CONTROLS. THIS SWITCH SHALL BE CONNECTED TO THE AREA OCCUPANCY SENSOR WITH CAT5 CABLING AND THEN CONNECTED TO EACH FIXTURE IN THE ROOM WITH CAT5 CABLING. THEN EACH FIXTURE SHALL BE PROGRAMMED AND CONTROLLED BY THE AREA'S SINGLE-POLE SWITCH. THIS AREA'S LIGHTING FIXTURES SHALL BE FULLY DIMMABLE DOWN TO 1%.
- WORK ROOM/STORAGE: PROVIDE CEILING OR SWITCH MOUNTED OCCUPANCY SENSOR. THESE AREAS SHALL BE ON/OFF OPERATION ONLY.
- CORRIDOR: PROVIDE KEYED SWITCHES AT ALL ENTRANCES FOR NON EMERGENCY CORRIDOR FIXTURES. EMERGENCY FIXTURES SHALL BE CONNECTED TO THE EMERGENCY GENERATOR AND SHALL BE ON 24 HOURS A DAY AS A NIGHT LIGHT/SECURITY MEASURE.
- RESTROOMS: PROVIDE CEILING MOUNT OCCUPANCY SENSORS TO PROVIDE AN ON/OFF OPERATION.
- MECHANICAL ROOMS: PROVIDE LOCAL TOGGLE SWITCH FOR ON/OFF OPERATION.
- GYM: PROVIDE 2-POLE SWITCH WITH INTEGRAL ON-OFF-RAISE-LOWER CONTROLS. ROUTE CAT5 CABLING FROM 2-POLE SWITCH TO FIRST LIGHT FIXTURE TYPE D1. THEN DAISY CHAIN ALL LIGHT FIXTURES INCLUDING THE TWO FIXTURES FED FROM THE EMERGENCY CIRCUIT WITH CAT5 CABLING TO PROVIDE A FULLY CONTROLLED ROOM. CONNECT THE LIGHTING FIXTURES WITH CAT5 CABLING IN A DAISY CHAIN LAYOUT SO HALF THE FIXTURES COULD BE TURNED OFF FOR CLEANING PURPOSES.



2 MEZZANINE LIGHTING PLAN
E101 SCALE: 1/8" = 1'-0"



3 SECURED ENTRANCE LIGHTING PLAN
E101 SCALE: 1/8" = 1'-0"



1 FIRST FLOOR LIGHTING PLAN
E101 SCALE: 1/8" = 1'-0"

ATTACHMENT B:

Pre-Construction Conference Agenda and Attendance Sign-in Sheet

Pre-Bid Conference Agenda #2

Project: Park Middle School Addition Project
EA Project No: 15-2100
LPS Bid Package No: 8369
Date/Time: February 4th, 2016, 4:00 pm
Location: Park Middle School, 855 S. 8th St., Lincoln, NE

1. INTRODUCTIONS

- a. Introduction of Owner and Design Team present
- b. Sign-in sheet

2. PROJECT ORIENTATION

- a. Location
 - i. Existing building
 - ii. Addition area
 - iii. Secured entry renovation area
 - iv. Geothermal well field area
- b. General scope of work
- c. Work parameters
 - i. LPS tobacco free site policy
 - ii. Neighborhood considerations – noise, street traffic, etc.
- d. Students on site and in school for 2016/2017 school year
- e. Site utilization/material storage
- f. Schedule – Substantial Completion required by December 30, 2016.
- g. Phasing

3. BIDDING REQUIREMENTS

- a. Bid Opening February 11, 2016, 2:00 pm
 - i. Location: LPS Facilities and Maintenance, Training Room. 800 S. 24th St., Lincoln, NE 68510
- b. Specific bidding requirements
 - i. Bid form
 - ii. Bid security – 5% Bond required
- c. LPS sample A101 and B201 Contract documents
 - i. Available on-line for review at: <http://www.lps.org/busaff/purchasing/index.html>
 - ii. Documents are under the “Resources for Vendors” tab, “AIA Additions and Deletions”

4. SUPPLEMENTARY CONDITIONS

- a. Questions and interpretation of documents
 - i. Contact and method for answering questions:
 - ii. Brian Nelsen, 402-477-2404, brian@encompassarch.com
- b. Addenda
 - i. This is the only method for revising documents – no verbal interpretations will be given
 - ii. Prior Approvals & Substitution Requests due 10 days prior to Bid Date (Monday February 1st, 2016) to be considered and included in Addendum
 - iii. Basis of Design Substitutions: See Section 12500 and Section 016000.
- c. Anticipated schedule issue Addendum – Monday, February 1st, 2016.

5. QUESTIONS

6. TOUR and REVIEW OF SITE

7. ADJOURN

