

Addendum #3 – Final Core & Shell Package

Project Name: Hudl HQ – New Office / Mixed Use Building
Lincoln, NE
Project No.: 15024
Issued: January 28, 2016
Bid Date: 2:00 PM CST, Tuesday, February 2, 2016
Bid Opening: Sampson Construction
Location: 3730 South 14th Street
Lincoln, NE 68502

This Addendum is issued to Chief / Sampson Construction for distribution to all sub-Contractors and suppliers before receipt of proposals. This Addendum is to authorize the use of the following information in preparing proposals for the above named project. The bidder **must** enter the number of this Addendum on the **Proposal Sheet**.

GENERAL QUESTIONS AND CLARIFICATIONS

ADD 3-1. Exterior Studs.

Question: *The specs 2.4 Exterior Non-Load Bearing Wall Framing call for a min base-metal thickness of 0.0677" (14 gage) with a 1-5/8" flange, the drawings show 18 gage and the specs are written around a delegated design. If the design dictates a lesser gage is the 14 gage min still required?*

Response: With the delegated design, it's up to the supplier. However, we wouldn't want to go any lighter than 16 at brick locations as screwing the brick ties into the studs can become an issue with lighter gage material.

ADD 3-2. Transfer Switch Specifications

Question: *Specification section 263600 includes specifications for automatic transfer switches, manual transfer switches, and bypass/isolation switches. What type of transfer switches are required?*

Response: The transfer switches should be open transition automatic transfer switches and bypass isolation is not required. Paragraphs 2.03 and 2.04 have been removed from specification section 263600.

ADD 3-3. NETA Testing Requirements

Question: *Specifications for NETA testing is included in 263600 and 262818, is NETA testing required?*

Response: NETA testing is not required. References to NETA testing have been removed from specification sections 263600 and 262818.

MODIFICATIONS TO THE DRAWINGS

- ADD 3-4.** Revision to P111. Revised plan to include a single fire sprinkler zone control assembly. Refer to **Attachment P3-1.**
- ADD 3-5.** Revision to P112. Revised plan to include a single fire sprinkler zone control assembly. Refer to **Attachment P3-2.**
- ADD 3-6.** Revision to P113. Revised plan to include a single fire sprinkler zone control assembly. Refer to **Attachment P3-3.**
- ADD 3-7.** Revision to P114. Revised plan to include a single fire sprinkler zone control assembly. Refer to **Attachment P3-4.**
- ADD 3-8.** Revision to P115. Revised plan to include a single fire sprinkler zone control assembly. Refer to **Attachment P3-5.**
- ADD 3-9.** Revision to P116. Revised plan to include a single fire sprinkler zone control assembly. Refer to **Attachment P3-6.**
- ADD 3-10.** Revision to P117. Revised plan to include a single fire sprinkler zone control assembly. Refer to **Attachment P3-7.**

MODIFICATIONS TO THE SPECIFICATIONS

- ADD 3-11.** Revision to section 263600. Omit paragraphs 1.01(B)-1.01(D), 1.03(B), 2.03, 2.04, and 3.03(B). Refer to **Attachment E3-1.**
- ADD 3-12.** Revision to section 262818. Omit paragraphs 1.01(B), 1.03(D), and 3.03. Refer to **Attachment E3-2.**
- ADD 3-13.** Revision to section 238101. Added 2.03 Fan-Coil Units. This applies to AHU-7, 8, and 10-15. Refer to **Attachment M3-1.**

ATTACHMENTS

ADD 3-14. The following attachments are included as part of this addendum.

- Attachment E3-1: Revisions to 263600
- Attachment E3-2: Revisions to 262818
- Attachment M3-1: Revisions to 238101
- Attachment P3-1: Revisions to P111
- Attachment P3-2: Revisions to P112
- Attachment P3-3: Revisions to P113
- Attachment P3-4: Revisions to P114
- Attachment P3-5: Revisions to P115
- Attachment P3-6: Revisions to P116
- Attachment P3-7: Revisions to P117

End of Core & Shell Addendum #3

SECTION 263600 - TRANSFER SWITCHES

PART 1 GENERAL

1.01 SECTION INCLUDES

- A. Automatic Transfer Switch.
- ~~B. Manual Transfer Switch.~~
- ~~C. Automatic Transfer Switch and Bypass/Isolation Switch.~~
- ~~D. NETA Testing.~~

1.02 RELATED REQUIREMENTS

- A. Section 260553 - Identification for Electrical Systems: Identification products and requirements.
- B. Section 263213 - PACKAGED ENGINE GENERATORS: Testing requirements.

1.03 REFERENCE STANDARDS

- A. NEMA ICS 10 - Industrial Control and Systems: AC Transfer Switch Equipment; National Electrical Manufacturers Association; 2005.
- ~~B. NETA STD ATS - Acceptance Testing Specifications for Electrical Power Distribution Equipment and Systems; International Electrical Testing Association; 2009.~~
- C. NFPA 70 - National Electrical Code; National Fire Protection Association; Most Recent Edition Adopted by Authority Having Jurisdiction, Including All Applicable Amendments and Supplements.

1.04 SUBMITTALS

- A. Product Data: Provide catalog sheets showing voltage, switch size, ratings and size of switching and overcurrent protective devices, operating logic, short circuit ratings, dimensions, and enclosure details.
- B. Operation Data: Instructions for operating equipment under emergency conditions when engine generator is running.
- C. Maintenance Data: Routine preventative maintenance and lubrication schedule. List special tools, maintenance materials, and replacement parts.
- D. Submittals are reviewed only for general compliance with the Contract Documents. Dimensions, quantities and details are not checked during submittal review. Review of the submittals does not relieve the Contractor of the responsibility for providing all materials, equipment and accessories necessary for a complete and operational system meeting the requirements of the project and the intent of the Contract Documents. The

2.02 AUTOMATIC TRANSFER SWITCH

- A. Description: NEMA ICS 10, automatic transfer switch .
- B. Configuration: Electrically operated, mechanically held transfer switch, 4 pole, open transition unless noted otherwise.
- C. In-Phase Monitor: Inhibit transfer until source and load are synchronized

~~2.03 AUTOMATIC TRANSFER AND BYPASS/ISOLATION SWITCH~~

- ~~A. Description: NEMA ICS 10, automatic transfer switch with manual bypass switch.~~
- ~~B. Configuration: Draw-out type electrically operated, mechanically held transfer switch with manually operated CONNECTED, TEST, AND DISCONNECTED draw-out positions, and with mechanically operated, mechanically held transfer switch connected to bypass automatic switch in both NORMAL and EMERGENCY positions. Transfer shall be open transition, 4 pole unless noted otherwise.~~
- ~~C. Bypass Switch Ratings: Match automatic transfer switch for electrical ratings.~~
- ~~D. In Phase Monitor: Inhibit transfer until source and load are synchronized.~~

~~2.04 MANUAL TRANSFER SWITCH~~

- ~~A. Description: NEMA ICS 10, manual transfer switch.~~
- ~~B. Configuration: Electrically operated, mechanically held transfer switch, 4 pole, open transition configuration unless noted otherwise.~~
- ~~C. Sequence of Operation: Switch position is selected by control switch mounted in switch cover.~~

2.05 SERVICE CONDITIONS

- A. Service Conditions: NEMA ICS 10.

2.06 COMPONENTS

- A. Indicating Lights: Mount in cover of enclosure to indicate NORMAL SOURCE AVAILABLE, ALTERNATE SOURCE AVAILABLE, and SWITCH POSITION.
- B. Test Switch: Mount in cover of enclosure to simulate failure of normal source.
- C. Return to Normal Switch: Mount in cover of enclosure to initiate manual transfer from alternate source to normal source.
- D. Transfer Switch Auxiliary Contacts: 1 normally open; 1 normally closed.
- E. Normal Source Monitor: Monitor each line of normal source voltage and frequency; initiate transfer when voltage drops below 85 percent or frequency varies more than 3 percent from rated nominal value.

- F. Alternate Source Monitor: Monitor alternate source voltage and frequency; inhibit transfer when voltage is below 85 percent or frequency varies more than 3 percent from rated nominal value.
- G. Switched Neutral: Overlapping contacts.
- H. Enclosure: ICS 10, Type 1, finished with manufacturer's standard enamel.

2.07 AUTOMATIC SEQUENCE OF OPERATION

- A. Initiate Time Delay to Start Alternate Source Engine Generator: Upon initiation by normal source monitor.
- B. Time Delay To Start Alternate Source Engine Generator: 0 to 10 seconds, adjustable.
- C. Initiate Transfer Load to Alternate Source: Upon initiation by normal source monitor and permission by alternate source monitor.
- D. Time Delay Before Transfer to Alternate Power Source: 0 to 300 seconds, adjustable.
- E. Initiate Retransfer Load to Normal Source: Upon permission by normal source monitor.
- F. Time Delay Before Transfer to Normal Power: 0 to 1800 seconds, adjustable; bypass time delay in event of alternate source failure.
- G. Time Delay Before Engine Shut Down: 0 to 30 minutes, adjustable, of unloaded operation.
- H. Engine Exerciser: Start engine every 7 days; run for 30 minutes before shutting down. Bypass exerciser control if normal source fails during exercising period.

PART 3 EXECUTION

3.01 EXAMINATION

- A. Verify that surface is suitable for transfer switch installation.

3.02 INSTALLATION

- A. Install in accordance with manufacturer's instructions.
- B. Provide engraved plastic nameplates under the provisions of Section 260553.

3.03 FIELD QUALITY CONTROL

- A. Provide the services of the manufacturer's technical representative to check out transfer switch connections and operation and place in service.
- ~~B. Inspect and test in accordance with NETA STD ATS, except Section 4.~~

SECTION 262818 - ENCLOSED SWITCHES

PART 1 GENERAL

1.01 SECTION INCLUDES

- A. Enclosed safety switches.
 - 1. Fusible switches.
 - 2. Nonfusible switches.
- ~~B. NETA testing.~~

1.02 RELATED REQUIREMENTS

- A. Section 260526 - GROUNDING AND BONDING.
- B. Section 260529 - Hangers and Supports for Electrical Systems.
- C. Section 262813 - Fuses.

1.03 REFERENCE STANDARDS

- A. NECA 1 - Standard for Good Workmanship in Electrical Construction; National Electrical Contractors Association; 2010.
- B. NEMA 250 - Enclosures for Electrical Equipment (1000 Volts Maximum); 2008.
- C. NEMA KS 1 - Enclosed and Miscellaneous Distribution Equipment Switches (600 Volts Maximum); National Electrical Manufacturers Association; 2001 (R2006).
- ~~D. NETA STD ATS - Acceptance Testing Specifications for Electrical Power Distribution Equipment and Systems; International Electrical Testing Association; 2009.~~
- E. NFPA 70 - National Electrical Code; National Fire Protection Association; Most Recent Edition Adopted by Authority Having Jurisdiction, Including All Applicable Amendments and Supplements.
- F. UL 50 - Enclosures for Electrical Equipment, Non-Environmental Considerations; Current Edition, Including All Revisions.
- G. UL 50E - Enclosures for Electrical Equipment, Environmental Considerations; Current Edition, Including All Revisions.
- H. UL 98 - Enclosed and Dead-Front Switches; Current Edition, Including All Revisions.
- I. UL 869A - Reference Standard for Service Equipment; Current Edition, Including All Revisions.

1.04 ADMINISTRATIVE REQUIREMENTS

- A. Coordination:

~~3.03 FIELD QUALITY CONTROL~~

- ~~A. Inspect and test in accordance with NETA STD ATS, except Section 4.~~
- ~~B. Correct deficiencies and replace damaged or defective enclosed safety switches or associated components.~~

3.04 ADJUSTING

- A. Adjust tightness of mechanical and electrical connections to manufacturer's recommended torque settings.

3.05 CLEANING

- A. Clean dirt and debris from switch enclosures and components according to manufacturer's instructions.

- B. Repair scratched or marred exterior surfaces to match original factory finish.
- END OF SECTION 262818

SECTION 238101 - TERMINAL HEAT TRANSFER UNITS

PART 1 GENERAL

1.01 SECTION INCLUDES

- A. Unit heaters.
 - 1. Hydronic.
- B. Electric unit heaters.
- C. Fan-Coil Units
 - 1. Hydronic.

1.02 RELATED REQUIREMENTS

- A. Section 262717 - Equipment Wiring: Electrical characteristics and wiring connections. Installation of room thermostats. Electrical supply to units.

1.03 SUBMITTALS

- A. Product Data: Provide typical catalog of information including arrangements.
- B. Shop Drawings:
 - 1. Indicate cross sections of cabinets, grilles, bracing and reinforcing, and typical elevations.
 - 2. Submit schedules of equipment and enclosures typically indicating length and number of pieces of element and enclosure, corner pieces, end caps, cap strips, access doors, pilaster covers, and comparison of specified capacity required to actual capacity output provided.
 - 3. Indicate mechanical and electrical service locations and requirements.
- C. Project Record Documents: Record actual locations of components and locations of access doors in radiation cabinets required for access or valving.
- D. Operation and Maintenance Data: Include manufacturers descriptive literature, operating instructions, installation instructions, maintenance and repair data, and parts listings.
- E. Warranty: Submit manufacturer's warranty and ensure forms have been completed in Owner's name and registered with manufacturer.
- F. Submittals are reviewed only for general compliance with the Contract Documents. Dimensions, quantities and details are not checked during submittal review. Review of the submittals does not relieve the Contractor of the responsibility for providing all materials, equipment and accessories necessary for a complete and operational system meeting the requirements of the project and the intent of the Contract Documents. The responsibility for coordination of substituted materials and equipment lies solely with the substituting Contractor.

1.04 QUALITY ASSURANCE

- A. Manufacturer Qualifications: Company specializing in manufacturing the Products specified in this section with minimum five years experience.
- B. Products Requiring Electrical Connection: Listed and classified by Underwriters Laboratories Inc. as suitable for the purpose specified and indicated.
- C. Code or utility company requirements shall supersede any conflicting requirements of this Section.

1.05 WARRANTY

- A. Provide five year manufacturers warranty for all equipment.

PART 2 PRODUCTS

2.01 UNIT HEATERS

- A. Manufacturers:
 - 1. Slant/Fin Corporation: www.slantfin.com.
 - 2. Marley Engineered Products/A United Dominion Company: www.marleymeh.com.
 - 3. Sterling Hydronics/Mestek Technology, Inc: www.sterlingheat.com.
 - 4. Trane Inc: www.trane.com.
 - 5. Substitutions: The products of other manufacturers may be submitted, at the Contractor's option, during shop drawing review. The products of other manufacturers shall meet or exceed all requirements of these specifications and all requirements of the project as listed or shown on the Drawings. The Contractor accepts all responsibility for costs and coordination issues arising out of the substitution of materials or equipment, and the coordination of such substitutions with all other contractors and subcontractors.
- B. Coils: Seamless copper tubing, silver brazed to steel headers, and with evenly spaced aluminum fins mechanically bonded to tubing.
- C. Casing: 0.0478 inch (1.2 mm) steel with threaded pipe connections for hanger rods.
- D. Finish: Factory applied baked enamel of manufacturer's standard color.
- E. Fan: Direct drive propeller type, statically and dynamically balanced, with fan guard; horizontal models with permanently lubricated sleeve bearings; vertical models with grease lubricated ball bearings.
- F. Air Outlet: Adjustable pattern diffuser on projection models and two way louvers on horizontal throw models.
- G. Motor: Permanently lubricated sleeve bearings on horizontal models, grease lubricated ball bearings on vertical models.
- H. Control: Local disconnect switch and as specified in temperature control sections.

2.02 ELECTRIC UNIT HEATERS

- A. Manufacturers:
1. INDEECO (Industrial Engineering and Equipment Company):
www.indeeco.com.
 2. Marley Engineered Products; Model _____: www.marleymep.com.
 3. Trane Inc: www.trane.com.
 4. Substitutions: The products of other manufacturers may be submitted, at the Contractor's option, during shop drawing review. The products of other manufacturers shall meet or exceed all requirements of these specifications and all requirements of the project as listed or shown on the Drawings. The Contractor accepts all responsibility for costs and coordination issues arising out of the substitution of materials or equipment, and the coordination of such substitutions with all other contractors and subcontractors.
- B. Assembly: UL listed and labelled assembly with terminal box and cover, and controls.
- C. Heating Elements: Enclosed copper tube, aluminum finned element of coiled nickel-chrome resistance wire centered in tubes and embedded in refractory material or exposed helical coil of nickel-chrome resistance wire with refractory ceramic support bushings.
- D. Cabinet: 0.0478 inch (1.2 mm) steel with easily removed front panel with integral air outlet and inlet grilles.
- E. Element Hangers: Quiet operating, ball bearing cradle type providing unrestricted longitudinal movement, on enclosure brackets.
- F. Fan: Direct drive propeller type, statically and dynamically balanced, with fan guard.
- G. Motor: Permanently lubricated, sleeve bearings for horizontal models, ball bearings for vertical models.
- H. Control: Separate fan speed switch and thermostat heat selector switch, factory wired, with switches built-in behind cover. Provide thermal overload. Provide wall thermostat control when indicated on the Drawings.
- I. Equipment performance and accessories shall be as scheduled on the Drawings and specified herein. Inclusion in both locations is not a prerequisite to inclusion in the Contract. Equipment and accessories specified in either location shall be included in the Contract.

2.03 FAN-COIL UNITS

- A. Manufacturers:
1. Carrier Corporation: www.carrier.com.
 2. McQuay International: www.mcquay.com.
 3. Trane Inc: www.trane.com.
 4. Substitutions: The products of other manufacturers may be submitted, at the Contractor's option, during shop drawing review. The products of other manufacturers shall meet or exceed all requirements of these specifications and all requirements of the project as listed or shown on the Drawings. The Contractor accepts all responsibility for costs and coordination issues arising out of the

substitution of materials or equipment, and the coordination of such substitutions with all other contractors and subcontractors.

- B. Coils: Evenly spaced aluminum fins mechanically bonded to copper tubes, designed for 200 psi (1380 kPa) and 220 degrees F (104 degrees C). Provide drain pan under cooling coil, easily removable for cleaning, with drain connection.
- C. Cabinet: 0.0598 inch (1.5 mm) steel with exposed corners and edges rounded, easily removed panels, glass fiber insulation and integral air outlet.
- D. Finish: Factory apply baked enamel of color as selected by the architect on any visible surfaces of enclosure or cabinet.
- E. Fans: Centrifugal forward-curved double-width wheels, statically and dynamically balanced, direct driven.
- F. Motor: Tap wound multiple speed permanent split capacitor with sleeve bearings, resiliently mounted.
- G. Control: Multiple speed switch, factory wired, located in cabinet.
- H. Filter: Easily removed 1 inch (25 mm) thick glass fiber throw-away type, located to filter air before coil.
- I. Mixing Dampers: Where indicated, mixing sections with dampers.
- J. Equipment performance and accessories shall be as scheduled on the Drawings and specified herein. Inclusion in both locations is not a prerequisite to inclusion in the Contract. Equipment and accessories specified in either location shall be included in the Contract.

PART 3 EXECUTION

3.01 INSTALLATION

- A. Install in accordance with manufacturer's instructions.
- B. Install equipment exposed to finished areas after walls and ceiling are finished and painted. Do not damage equipment or finishes.
- C. Protection: Provide finished cabinet units with protective covers during balance of construction.
- D. Unit Heaters: Hang from building structure with pipe hangers anchored to building, not form piping. Mount as high as possible to maintain greatest headroom unless otherwise indicated.
 - 1. Hydronic units:
 - a. On inlet provide:
 - 1) Automatic Air Vent with Ball Stop Valve
 - 2) Ball Valve
 - 3) Strainer

- 4) Automatic Control Valve
- 5) Union
- 6) Drain Cock
- b. On outlet provide:
 - 1) Union
 - 2) Balancing Valve
 - 3) Ball Valve
- E. Install electric equipment including devices furnished by manufacturer but not factory-mounted. Furnish copy of manufacturer's wiring diagram submittal. Install electrical wiring in accordance with manufacturer's submittals and Section 16155.
- F. Verify that proper power supply is available prior to ordering equipment. Verify proper voltage, phase and current rating of power supply and inform Engineer of any deviations prior to order, connection of equipment or start-up. Responsibility for verification of proper power supply voltage and any product returns or damage resulting from incorrect connections shall rest with this Contractor.

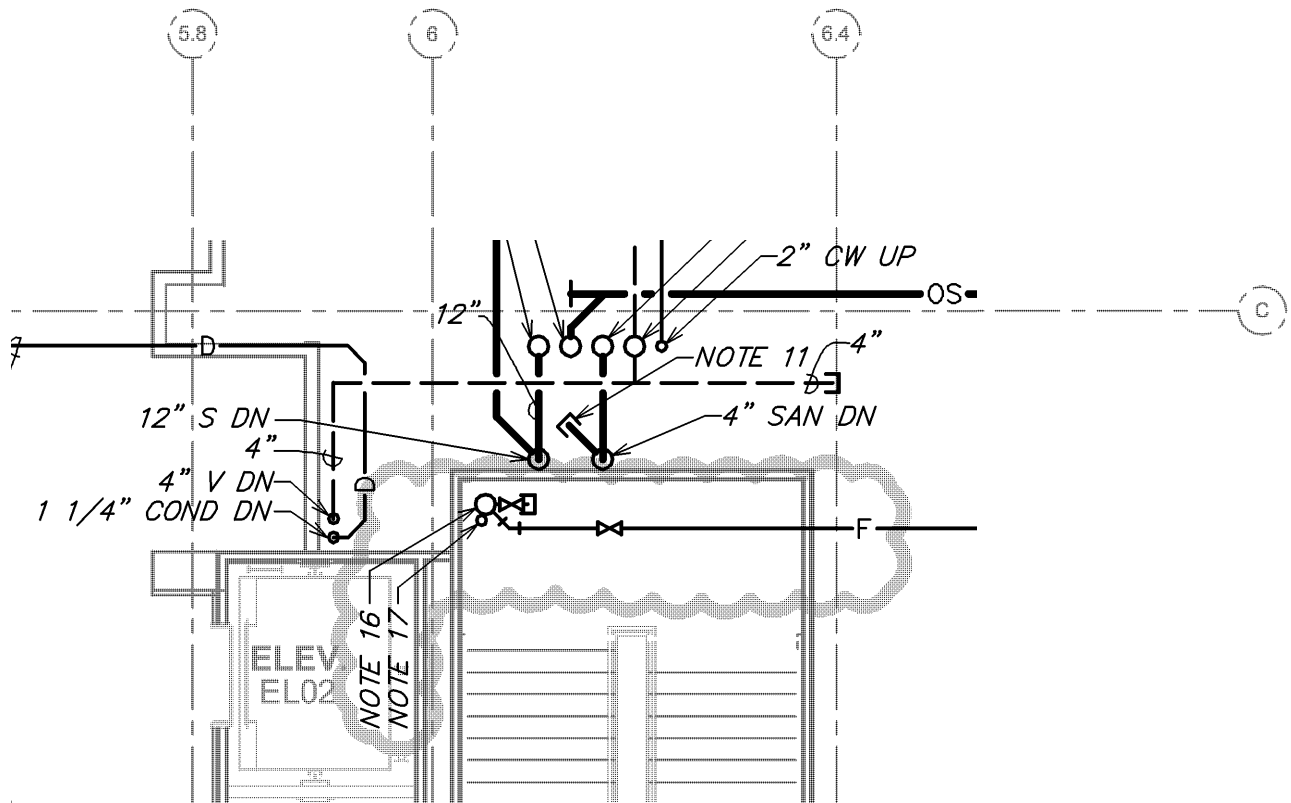
3.02 CLEANING

- A. Touch-up marred or scratched surfaces of factory-finished cabinets, using finish materials furnished by manufacturer.
- B. After construction is completed, including painting, clean exposed surfaces of units. Vacuum clean coils and inside of cabinets.
- C. Install new filters immediately prior to turn over to the Owner.

3.03 SCHEDULES

- A. Equipment performance and accessories shall be as scheduled on the Drawings and specified herein. Inclusion in both locations is not a prerequisite to inclusion in the Contract. Equipment and accessories specified in either location shall be included in the Contract.

END OF SECTION 238101



16. 6" CLASS-I STANDPIPE SYSTEM UP/DOWN WITH 2 1/2" HOSE VALVE, 1 1/2" REDUCER, CAP, AND CHAIN IN ACCORDANCE WITH NFPA 14 REQUIREMENTS. PROVIDE PRESSURE REDUCING HOSE VALVES WHERE REQUIRED.
17. 3" STANDPIPE DRAIN RISER UP/DOWN. DISCHARGE TO EXTERIOR.

Plumbing Plan - Level 1

SINCLAIR **hille** architects

Revision to Sheet: **P111**

Hudl HQ - New Office / Mixed Use Building

Attachment: P3-1

Scale: 1/16" = 1'-0"

Project Number:

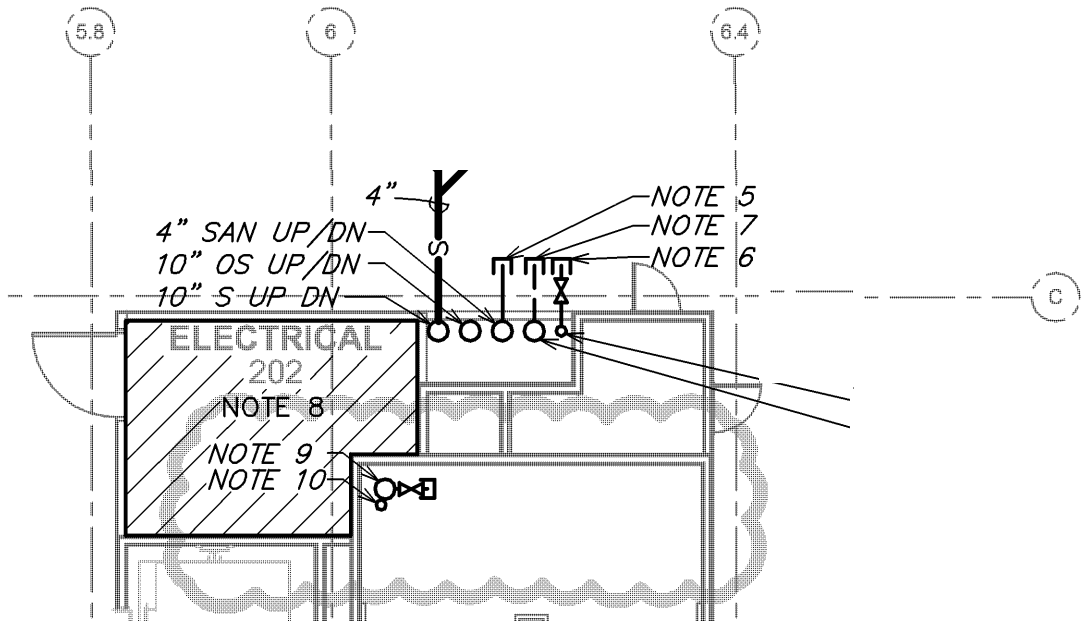
15024-05

Date:

January 27, 2016

Attachment to:

Addendum 03



ABOVE ELECTRICAL EQUIPMENT ACCESS SPACE.
 9. 6" CLASS-I STANDPIPE SYSTEM UP/DOWN WITH 2 1/2" HOSE VALVE, 1 1/2" REDUCER, CAP, AND CHAIN IN ACCORDANCE WITH NFPA 14 REQUIREMENTS. PROVIDE PRESSURE REDUCING HOSE VALVES WHERE REQUIRED.
 10. 3" STANDPIPE DRAIN RISER UP/DOWN. DISCHARGE TO EXTERIOR.

Plumbing Plan - Level 2

SINCLAIR **hille** architects

Revision to Sheet: **P112**

Hudl HQ - New Office / Mixed Use Building

Attachment: P3-2

Scale: 1/16" = 1'-0"

Project Number:

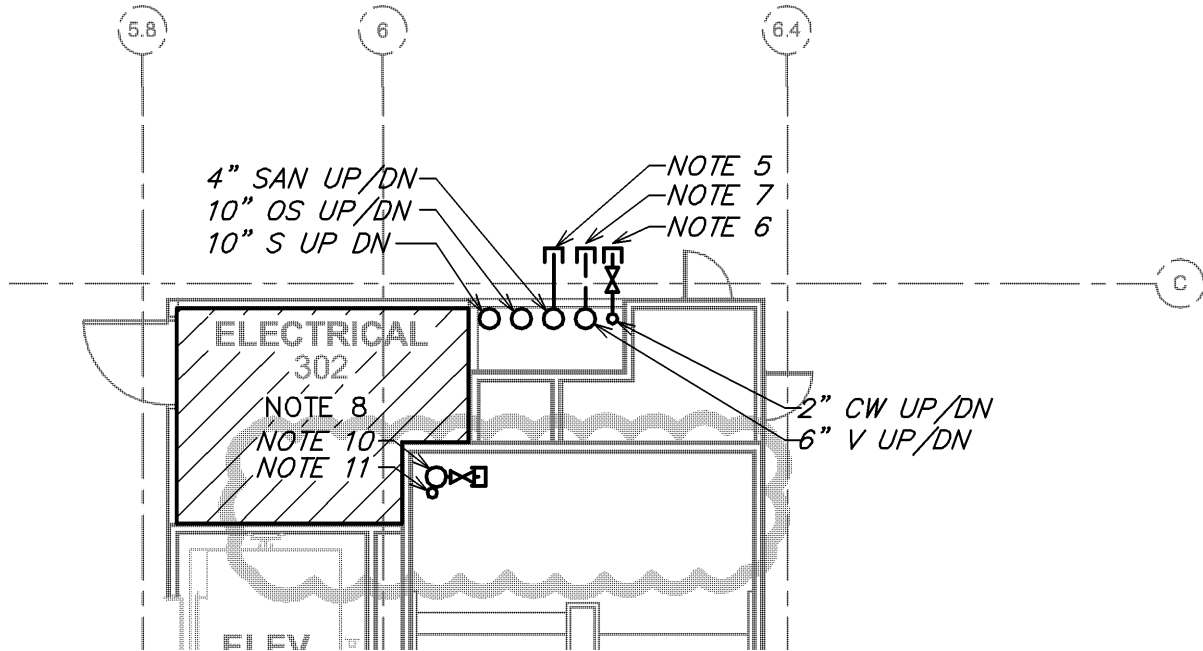
15024-05

Date:

January 27, 2016

Attachment to:

Addendum 03



- SUFF 11.
10. 6" CLASS-I STANDPIPE SYSTEM UP/DOWN WITH 2 1/2" HOSE VALVE, 1 1/2" REDUCER, CAP, AND CHAIN IN ACCORDANCE WITH NFPA 14 REQUIREMENTS. PROVIDE PRESSURE REDUCING HOSE VALVES WHERE REQUIRED.
 11. 3" STANDPIPE DRAIN RISER UP/DOWN. DISCHARGE TO EXTERIOR.

Plumbing Plan - Level 3

SINCLAIR **hille** architects

Revision to Sheet: **P113**

Hudl HQ - New Office / Mixed Use Building

Attachment: P3-3

Scale: 1/16" = 1'-0"

Project Number:

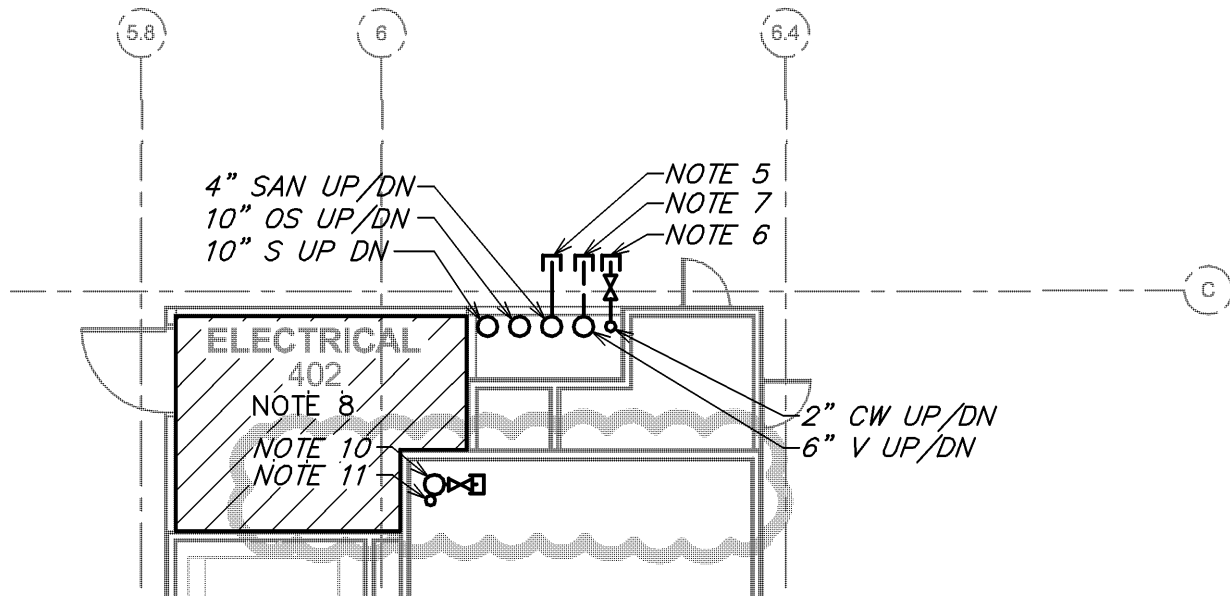
15024-05

Date:

January 27, 2016

Attachment to:

Addendum 03



- B**
- EQUIPMENT.*
10. 6" CLASS-I STANDPIPE SYSTEM UP/DOWN WITH 2 1/2" HOSE VALVE, 1 1/2" REDUCER, CAP, AND CHAIN IN ACCORDANCE WITH NFPA 14 REQUIREMENTS. PROVIDE PRESSURE REDUCING HOSE VALVES WHERE REQUIRED.
 11. 3" STANDPIPE DRAIN RISER UP/DOWN. DISCHARGE TO EXTERIOR.

Plumbing Plan - Level 4

SINCLAIR **hille** architects

Revision to Sheet: **P114**

Hudl HQ - New Office / Mixed Use Building

Attachment: P3-4

Scale: 1/16" = 1'-0"

Project Number:

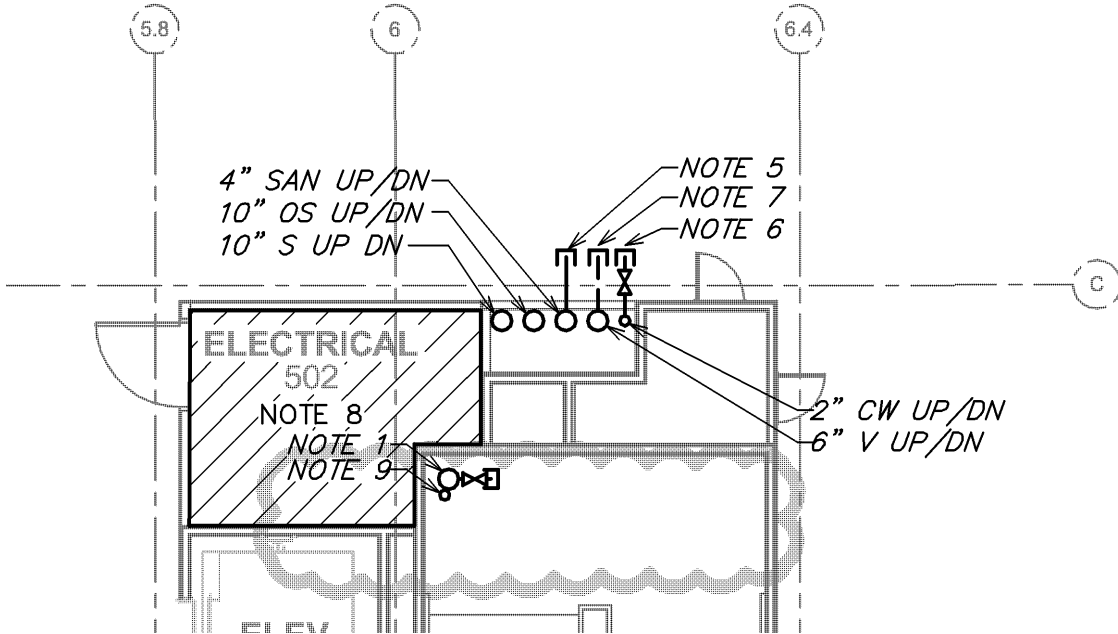
15024-05

Date:

January 27, 2016

Attachment to:

Addendum 03



ABOVE ELECTRICAL EQUIPMENT ACCESS SPACE.
9. 3" STANDPIPE DRAIN RISER UP/DOWN.
DISCHARGE TO EXTERIOR.

Plumbing Plan - Level 5

SINCLAIR **hille**
architects

Revision to Sheet: **P115**

Hudl HQ - New Office / Mixed Use Building

Attachment: P3-5

Scale: 1/16" = 1'-0"

Project Number:

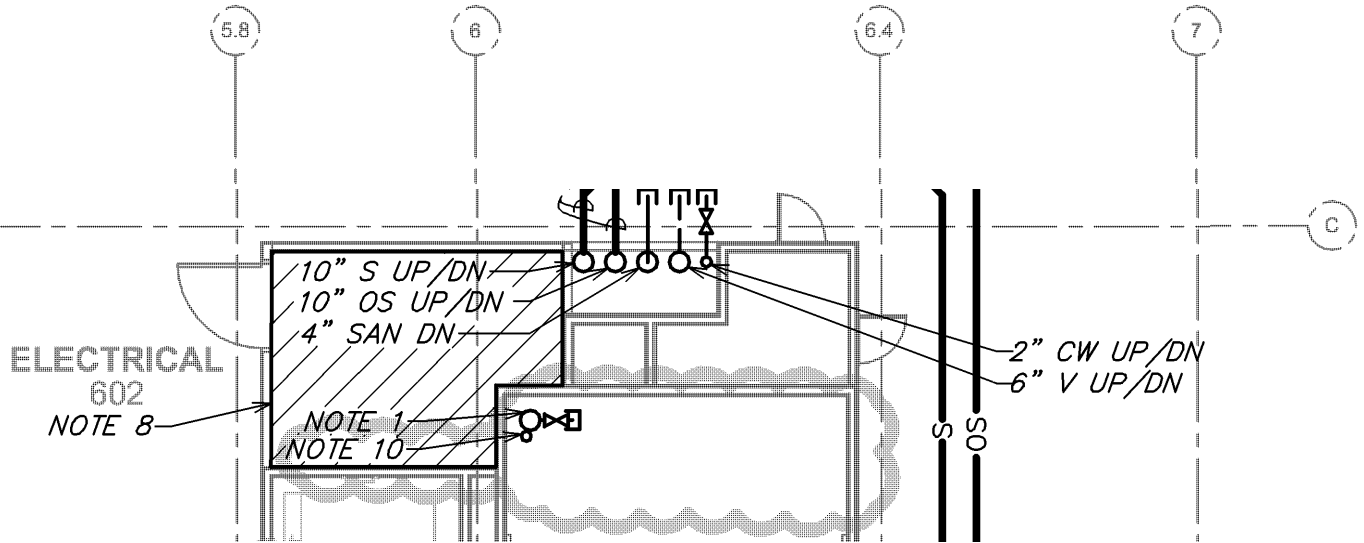
15024-05

Date:

January 27, 2016

Attachment to:

Addendum 03



C | *FUTURE TENANT GAS GRILL LOCATED ON GREEN ROOF.*
 10. *3" STANDPIE DRAIN RISER UP/DOWN. DISCHARGE TO EXTERIOR.*

Plumbing Plan - Level 6

SINCLAIR **hille** architects

Revision to Sheet: **P116**

Hudl HQ - New Office / Mixed Use Building

Attachment: P3-6

Scale: 1/16" = 1'-0"

Project Number:

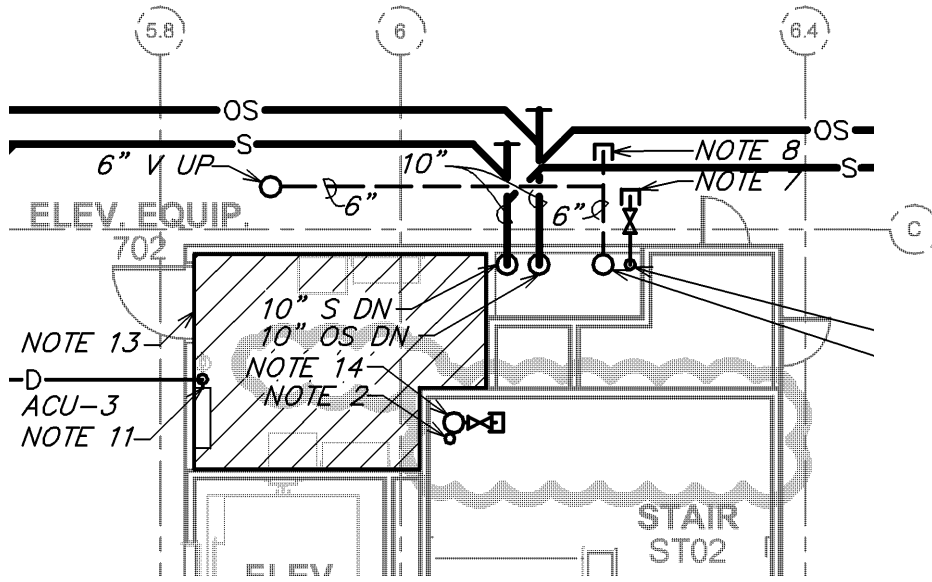
15024-05

Date:

January 27, 2016

Attachment to:

Addendum 03



ABOVE ELECTRICAL EQUIPMENT ACCESS SPACE.
 14. 6" CLASS-I STANDPIPE SYSTEM UP/DOWN
 WITH 2 1/2" HOSE VALVE, 1 1/2" REDUCER,
 CAP, AND CHAIN IN ACCORDANCE WITH
 NFPA 14 REQUIREMENTS. PROVIDE PRESSURE
 REDUCING HOSE VALVES WHERE REQUIRED.

Plumbing Plan - Level 7

SINCLAIR **hille** architects

Revision to Sheet: **P117**

Hudl HQ - New Office / Mixed Use Building

Attachment: P3-7

Scale: 1/16" = 1'-0"

Project Number:

15024-05

Date:

January 27, 2016

Attachment to:

Addendum 03