



23 JAN 2015

MILITARY DEPARTMENT
STATE of NEBRASKA
LINCOLN, NEBRASKA

**NEBRASKA ARMY NATIONAL GUARD
LINCOLN COMPLEX, FMS#1 SUSTAINMENT PROJECT**

at the

**FMS #1
1111 Military Rd
Lincoln, NE 68508**

for the

MILITARY DEPARTMENT
STATE of NEBRASKA
Lincoln, Nebraska

PROJECT NO. 31100108

ADDENDUM NO. 1

The original specifications and drawings on the STATE OF NEBRASKA REQUEST for PROPOSAL FORM for the project noted above are amended as noted in this Addendum No. 1.

Receipt of this Addendum shall be acknowledged by inserting its number and date in the space provided on the Bid Form.

ADDENDUM NO. 1

NOTE TO ALL PLANHOLDERS: Please insert this Addendum into your copy of the Contract Documents for the above named project.

The following changes to the Contract Documents are issued by the CFMO-CMB and shall have the same force and affect as though a part of the original issue.

THE RECIEPT DATE, TIME and LOCATION of the BID PROPOSAL submission HAS NOT CHANGED.

ITEM NO.:

ADD 1-0: The pre-bid sign in sheet is attached.

ADD 1-1: Replace Bid Form with attached revised Bid Form.

ADD 1-2: Section 083613 - Sectional Overhead Doors, replace with the attached revised specification

ADD 1-3: Section 099113 - Exterior Painting, entire section is attached.

ADD 1-4: Section 323113 - Chain Link Fences and Gates. As a matter of clarification, fence fabric height shall be 6'-0".



- ADD 1-5: In reference to Sheet C-101. Change Keynote #1 to read as follows: "1. Remove existing H-line posts, footings, chain link fence, barb arms and large diameter posts along entire south property line after new fence is installed. Existing crash cable, crash cable anchoring and barbed wire to be removed and salvaged for reuse. As a matter of clarification, crash cable anchoring at each end is embedded in concrete. Remove fencing to just beyond the crash cable anchoring system and coordinated with new work."
- ADD 1-6: In reference to Sheet C-101. As a matter of clarification, there is no gate in the fence at the south property line.
- ADD 1-7: In reference to Sheet C-101. As a matter of clarification, there are two large trees on the east side of the property at the south end. Drawings only show 1 tree. Keynote #3 shall apply to both trees.
- ADD 1-8: In reference to Sheet C-102. Change Keynote #1 to read as follows: "1. Construct new fence approximately 2'-0" inside existing fence to be demolished as required to maintain security of facility. Reinstall salvaged barbed wire, crash cable and crash cable anchoring system at each end. Provide new barbed wire to match existing where existing barbed wire length is insufficient for new work."
- ADD 1-9: In reference to Sheet C-102 and the attached supplemental drawing C-102.1. Add keynote #1 and point to the entire south fence line. This supplemental drawing indicates the location and length of fence removal.
- ADD 1-10: In reference to Sheet C-102. Refer to the fence details. Title the details "2. Fence Details"
- ADD 1-11: In reference to Sheet C-102. Refer to the fence details. Fence shall include a top brace rail in lieu of tension wire indicated. As a matter of clarification, a bottom brace rail is not required.
- ADD 1-12: In reference to Sheet C-102. Refer to the fence details. As a matter of clarification, the crash cable is not shown in the details. Match existing height and installation details of crash cable. Provide new crash cable to match existing where existing crash cable length is insufficient for new work.
- ADD 1-13: Replace Sheet A-101 with the attached Sheet A-101.
- ADD 1-14: In reference to Sheet A-102. Add keynote #6 to the keynote beginning with "The existing....."
- ADD 1-15: In reference to Sheet A-102. The 2 ladders just outside the "open to work bay" area indicated by keynote #2 that are being removed are to be replaced. Install in existing location. Refer to attached supplemental drawing A-501.1 for new ladder details.
- ADD 1-16: In reference to Sheet A-103. Add the following note to keynotes #3, 4, 5 and 6. "Paint door jambs."
- ADD 1-17: In reference to Sheet A-501. The plaster that is to be removed per section 1 is not believed to have asbestos containing materials.
- ADD 1-18: In reference to Sheet A-601. Refer to the Door and Frame Schedule. Change door heights indicated from 13'-4" to 13'-0"

THIS ADDENDUM SHALL BE ATTACHED TO AND MADE A PART OF THE DRAWINGS AND SPECIFICATIONS AND SHALL BE ACKNOWLEDGED WITH THE BIDDER'S PROPOSAL.


DARYL L. BOHAC
Major General, The Adjutant General

End of Addendum No. 1



PROPOSAL

TO:

**Daryl L. Bohac
Major General, The Adjutant General
Military Department, State of Nebraska
2433 NW 24th Street
Lincoln, NE 68524-1801**

The undersigned, being familiar with local conditions affecting the cost of the work, and the Proposed Contract documents, including the Advertisement for Bids, Notice to Bidders, Instructions to Bidders, Proposal, Proposed Contract, Contract, Performance And Payment Bond, Form of Appointment of Purchasing Agent, Form of Exempt Sales/Use Tax Certificate, General Conditions, Supplemental Conditions, and Specifications and Plans all on file in the **Construction & Facilities Management Office, Nebraska Army National Guard, 2433 NW 24th Street, Lincoln, Nebraska 68524-18524**, hereby proposes to furnish all plant, equipment, transportation, materials, tools, labor and skills necessary and required to perform all work as described in the Proposed Contract Documents entitled:

LINCOLN COMPLEX FMS #1 SUSTAINMENT PROJECT

at

1111 MILITARY ROAD, LINCOLN, NE 68508-1048

SCOPE OF WORK:

The work covered by this Statement of Work consists of furnishing all labor, equipment, tools, materials, travel, lifts, licenses and permits to make miscellaneous modifications at the Nebraska Army National Guard's FMS #1 facility located at 1111 Military Road, Lincoln, Nebraska. The work will include demolition and installation of security fencing, replacing existing steel door and overhead doors, replacement of handrails, providing new access ladder and roof hatch as well as miscellaneous architectural, plumbing and electrical repair work, per plans and specifications set forth herein.

PROPOSAL

In accordance with the Proposed Contract documents including the following **Addenda** issued and attached:

Addendum # 1, dated: _____, Bidder's acknowledgement: _____

Addendum # 2, dated: _____, Bidder's acknowledgement: _____

For the contract sum of:

Base Bid: _____, \$ _____.
(Bidder will enter base bid amount in both words and numerals)

For the following **Alternate Bid Items**:

Alternate Bid Item #1: Remove/Replace Overhead Door in Work Bay 117

_____ \$ _____.
(Bidder will enter bid amount in both words and numerals)

Additional days

Alternate Bid Item #2: Remove/Replace North Overhead Door in Room 115

_____ \$ _____.
(Bidder will enter bid amount in both words and numerals)

Additional days

Alternate Bid Item #3: Remove/Replace South Overhead Door in Room 115

_____ \$ _____.
(Bidder will enter bid amount in both words and numerals)

Additional days

Additional ABIs for this project are listed on the enclosed following page (page P2A)

For the following **Unit Price Items** to add or delete the following work:

Unit Price Item #1: Not Applicable

_____ \$ _____ / _____
(Bidder will enter bid amount in both words and numerals) (enter price per unit of measure in numerals)

Unit Price Item #2: Not Applicable

_____ \$ _____ / _____
(Bidder will enter bid amount in both words and numerals) (enter price per unit of measure in numerals)

Unit Price Item #3: Not Applicable

_____ \$ _____ / _____
(Bidder will enter bid amount in both words and numerals) (enter price per unit of measure in numerals)

For the base bid and all items above, the amount shown in words will govern.

The undersigned agrees to complete all work within _____ **calendar days** following the award of the Contract.

ADDITIONAL ALTERNATE BID ITEMS:

Alternate Bid Item #4: Remove/Replace Overhead Door in Room 121

Additional days (Bidder will enter bid amount in both words and numerals) \$ _____.

Alternate Bid Item #5: Remove/Replace Handrails

Additional days (Bidder will enter bid amount in both words and numerals) \$ _____.

Alternate Bid Item #6: Supply/Install Compressed Air Piping

Additional days (Bidder will enter bid amount in both words and numerals) \$ _____.

PROPOSAL

The undersigned states that they are complying with, and will continue to comply with, fair labor standards in the pursuit of their business and in the execution of the Contract.

The undersigned acknowledges having reviewed provisions outlined for exemption of payment of sales taxes to the State of Nebraska and also understands the requirements for registration of any and all non-resident contractors and subcontractors with the Nebraska Department of Revenue.

Bid security in the amount of \$_____ as described in the Instructions to Bidders is required and is attached to this Proposal. In submitting this bid, the Bidder understands the Nebraska Military Department, State of Nebraska reserves the right to reject any or all bids, waive informalities and that this bid may not be withdrawn during the period of sixty (60) days following the scheduled closing time for receipt of the bids.

Name of Firm

An Individual ()
A Co-Partnership ()
A Corporation ()

Corporate Seal and State of Incorporation

Date

Principal Signature

NOTE: If Bidder is a partnership,
list the names of all partners below:

Printed Name of Principal

Printed Name of Partner

Title

Printed Name of Partner

Street Address

Printed Name of Partner

City, State, ZIP Code

Federal I.D. or Social Security Number

Phone

email

This page left blank intentionally.

**NEBRASKA ARMY NATIONAL GUARD
FMS #1 SUSTAINMENT
LINCOLN, NEBRASKA**

SECTION 083613 - SECTIONAL OVERHEAD DOORS

PART 1 - GENERAL

1.1 SECTION INCLUDES

- A. Insulated steel doors.
- B. Track and framing.
- C. Trolley operators.

1.2 RELATED SECTIONS

- A. Section 05500 "Metal Fabrications" for steel framed door openings.
- B. Section 07900 "Joint Sealers" for perimeter sealant and backup materials.

1.3 REFERENCES

- A. ASTM A 653/A 653M – Specification for Steel Sheet, Zinc-Coated (Galvanized) or Zinc-Iron Alloy-Coated (Galvannealed) by the Hot-Dip Process.
- B. ASTM B 209/209M – Specification for Aluminum and Aluminum-Alloy Sheet and Plate.
- C. ASTM B 221/221M – Specification for Aluminum and Aluminum-Alloy Extruded Bars, Rods, Wire, Profiles and Tubes.
- D. ANSI/DASMA 102-1996.

1.4 SUBMITTALS

- A. Product Data: Manufacturer's data sheets on each product to be used, including:
 - 1. Preparation instructions and recommendations.
 - 2. Storage and handling requirements and recommendations.
 - 3. Installation methods.
 - 4. Operation and maintenance data.
 - 5. Electrical diagrams.
 - 6. Cleaning methods
- B. Shop Drawings: Include opening dimensions and required tolerances, connection details, anchorage spacing, hardware locations, and installation details.
- C. Selection Samples: For each finish product specified, two complete sets of color chips representing manufacturer's full range of available colors and textures to match existing white o.h. door at west end of Work Bay 117.

**NEBRASKA ARMY NATIONAL GUARD
FMS #1 SUSTAINMENT
LINCOLN, NEBRASKA**

1.5 WIND PERFORMANCE REQUIREMENTS

- A. Design doors to withstand positive and negative wind loads as calculated in accordance with applicable governing building codes.

1.6 QUALITY ASSURANCE

- A. Manufacturer Qualifications: Company specializing in manufacturing the types of doors specified in this section with minimum five years documented experience.
- B. Installer Qualifications: Installation to be by qualified dealer in accordance with the manufacturer's installation instructions.

1.7 DELIVERY, STORAGE, AND HANDLING

- A. Store products in manufacturer's unopened packaging until ready for installation.

1.8 PROJECT CONDITIONS

- A. Maintain environmental conditions (temperature, humidity, and ventilation) within limits recommended by manufacturer for optimum results. Do not install products under environmental conditions outside manufacturer's absolute limits.

1.9 WARRANTY

- A. Paint finish: 10-year warranty against rust through from cracking, checking or peeling of the paint finish.
- B. Delamination: 10-year warranty against de-lamination.
- C. Operator: Manufacturer's standard limited 2-year warranty against material and manufacturing defects.

PART 2 - PRODUCTS

2.1 MANUFACTURERS

- A. Overhead Doors

- 1. Acceptable Manufacturer: Amarr Garage Doors; 165 Carriage Court, Winston-Salem, NC 27105. ASD. Tel: (800) 503-3667. Fax: (336) 251-1851. Email: marketing@amarr.com Website: www.amarr.com

**NEBRASKA ARMY NATIONAL GUARD
FMS #1 SUSTAINMENT
LINCOLN, NEBRASKA**

2. Subject to compliance with specifications, products by the follow are approved.

- a. Raynor
- b. Cookson
- c. Overhead Door Corporation
- d. Cornell

B. Operators:

1. Acceptable Manufacturer: LiftMaster; 845 Larch Avenue; Elmhurst, IL 60126-1196. Toll-Free: 800.282.6225. Email: specs@LiftMaster.com. Web: LiftMaster.com.

2.2 OVERHEAD DOORS - GENERAL

A. Provide each door with door sections, brackets, tracks, counterbalance mechanisms and hardware to suit the opening and headroom available.

B. Hardware:

1. Minimum of 14 gauge galvanized steel hinges and 13 gauge galvanized steel track brackets.
2. Rollers have 10 ball bearings with casehardened inner and outer races.
3. Sliding end stile locking device provided with spring-loaded bolt for inside operation only.
4. Doors 16 feet 4 inches (5102 mm) and wider provided with double end hinges and stiles and long stem rollers.

C. Tracks: 2 inches (51 mm) or 3 inches (76 mm) as required.

1. Vertical track 17 or 19-gauge minimum galvanized steel, inclined using adjustable brackets to assure weather tight closure at the jambs.
2. Horizontal tracks 16-gauge minimum galvanized steel, reinforced with 13 gauge galvanized steel angles as required by door size and weight.
3. Provide vertical lift tracks as indicated.
4. Provide high lift tracks as indicated.
5. Provide follow roof slope tracks as indicated.
6. Provide low headroom tracks as indicated.

D. Spring Counterbalance: Torsion springs for door counter-balance mounted on a continuous cross header shaft. Springs to be oil tempered, helical wound and custom computed for each door. Cable drums to be die cast aluminum. Galvanized lift cable to provide minimum safety factor of five to one. Springs to comply with ANSI/DASMA 102-1996 as follows:

1. High Cycle Spring: 50,000 cycles.

E. Handle: Galvanized steel step plate/lift handle provided on inside and outside of bottom section.

**NEBRASKA ARMY NATIONAL GUARD
FMS #1 SUSTAINMENT
LINCOLN, NEBRASKA**

- F. Weather stripping: Full length dual contact EPDM rubber bottom seal attached to bottom section.
- G. Weather stripping: Perimeter seal for header and jambs.
- H. Mounting: Continuous reverse angle mounting for steel jambs.

2.3 INSULATED STEEL DOORS

- A. Model 2700 Commercial 2 inches (51 mm) polyurethane insulated door.
 - 1. Door Size: As indicated on the Drawings.
 - 2. Door Sections: 2 inches (51 mm) thick, sandwich construction consisting of rolled formed, commercial quality, 27 gauge exterior and interior steel skins, stucco embossed, and ribbed for added strength. Door to have tongue and groove joint system with EPDM thermal break and weather strip between section joints. Sections to be insulated with CFC free polyurethane, foamed in place by means of a continuous process. Tested door section R-value of 19.40 is tested in accordance with ASTM C 518-04. Interior skin of each section to have one continuous reinforcing strip, 20 gauge by 3-1/4 inches (83 mm) wide at top and bottom of section to provide mounting of full hinges. End stiles to be 19 gauge standard.
 - 3. Finish: Door exterior and interior pre-painted steel consisting of a hot dipped galvanized coating applied to the base metal, a 0.2 mil baked on prime coat and an 0.8 mil baked on polyester top coat.
 - a. Exterior Color: White.
 - 4. Thermal Windows/Insulated Glass: 24 by 5 inches Molded plastic frame with insulated glass. Insulated glass unit to consist of two pieces of 1/8 inch (3.2 mm) thick clear glass with a 7/8 inch (22 mm) aluminum spacer.

2.4 FABRICATION

- A. Insulated Steel Doors.
 - 1. Standard maximum size: Model 2700 32 feet 2 inches wide by 24 feet 1 inch high (9.8m by 7.3m).
 - a. Galvanized struts (truss bars): Provide on all doors 12 feet 4 inches (3.8 m) and wider to prevent deflection of no more than 1/120 of the spanned width when in the open position.

2.5 TROLLEY-TYPE DOOR OPERATORS

- A. Industrial-Duty Operator: LiftMaster T Low-Profile Industrial-Duty Trolley Operator, continuous-duty, high-starting torque motor with overload protection and emergency disconnect for manual door operation.
1. Electric Operator: Industrial-duty assembly, cULus listed and cULus labeled, complete with electric motor and factory-rewired motor controls, internal auxiliary reversal circuit, 3-button open/close/stop control station, conduit-encased wiring from control circuit to motor, and accessories required for proper operation; operator shall be capable of driving door at a speed of approximately 8 to 12 inches (203 to 279 mm) per second. Vertical operator profile shall not exceed 12 inches (279 mm).
 - a. Drive Reduction: Heavy-duty 5L V-belt and chain/sprocket secondary; all reduction sprockets and pulleys shall be drilled and pinned to steel shafts plated for resistance to corrosion; operator shall be equipped with permanently lubricated ball bearings on output shaft, adjustable friction clutch and quick-disconnect door arm to facilitate manual operation.
 - b. Brake: Electric solenoid-actuated brake capable of stopping and holding a door at any position. Optional on 1/3 HP and 1/2 HP. Standard on 3/4 HP and 1 HP.
 - c. Limit Switches: Fully adjustable, linear-driven limit mechanism synchronizing operator with door; low-friction nylon limit nuts fitted on threaded steel shaft that rotates on oil-tight self-lubricating bronze bushings; motor shall be removable without affecting limit switch settings.
 - d. Electric Motor: High-starting torque, continuous-duty, industrial-type protected against overload by current sensing and thermal overload devices. For single-phase applications, incoming voltage field-selectable between 115V and 230V, 60 Hz by properly positioning connector. For 3-phase applications, incoming voltage field-selectable between 208V, 230V and 460V, 60 Hz by properly positioning connector.
 - 1) Motor Specification:
 - a) 115/230V60Hz, single phase, 1 HP.
 - e. Motor Control and Enclosure: LiftMaster Logic 5.0 motor control shall be UL-approved microprocessor solid-state type and shall include the capability to select one of 7 wiring types; additional features shall include a maintenance alert diagnostic system, programmable Timer-to-Close with timer defeat input, mid-stop programming capabilities and a maximum run timer to provide motor overrun protection; motor control shall be housed in a NEMA 1 enclosure integral to the operator and shall conform to ANSI/NEMA ICS 6.
 - 1) 3-Button Control Station: 3-button station providing open/close/stop functionality shall be NEMA Type 1 with maintenance alert indicator to signal intervals for routine door and operator maintenance.
 - 2) Door Drive: Full #41 roller chain with emergency disconnect for manual door operation.
 - 3) Track: Heavy-duty, double-angle, 11-gauge galvanized steel.

**NEBRASKA ARMY NATIONAL GUARD
FMS #1 SUSTAINMENT
LINCOLN, NEBRASKA**

- 4) Trolley Assembly: 2 inches H x 2 inches W (51 mm H x 51 mm W) galvanized steel angle rails with cast aluminum trolley including plated steel rail spacers with a nylon chain-guide assembly.
- f. Provide NEMA 4 protection for wash bay door operator.

PART 3 - EXECUTION

3.1 EXAMINATION

- A. Do not begin installation until substrates have been properly prepared.
- B. Verify wall openings are ready to receive work and opening dimensions and tolerances are within specified limits.

3.2 PREPARATION

- A. Clean surfaces thoroughly prior to installation.
- B. Prepare opening to permit correct installation of door unit to perimeter air and vapor barrier seal.

3.3 INSTALLATION

- A. Install in accordance with manufacturer's instructions.
- B. Anchor assembly to wall construction and building framing without distortion.
- C. Securely brace door tracks suspended from structure. Secure tracks to structural members or solid backing only.
- D. Fit and align door assembly, tracks and operating hardware.
- E. Install perimeter weatherstripping.
- F. Adjust door assembly to smooth operation and in full contact with weatherstripping.
- G. Test for proper operation and adjust until satisfactory results are obtained. Demonstrate operation to owner's personnel.
- H. Field verify conditions which may effect installation.

3.4 CLEANING

- A. Clean doors, frames and glass.
- B. Remove labels and visible markings.

**NEBRASKA ARMY NATIONAL GUARD
FMS #1 SUSTAINMENT
LINCOLN, NEBRASKA**

3.5 PROTECTION

- A. Protect installed products until completion of project.
- B. Touch-up, repair or replace damaged products before Substantial Completion.

3.6 TRAINING

- A. Demonstrate operation of each door to owner's personnel.

3.7 SCHEDULE

- A. In addition to the item's indicated above the following doors shall be provided with the following:
 - 1. Door 114: Treadle Hose
 - 2. Door 118: Provide door, hardware and operator suitable for interior wet conditions.

END OF SECTION 083613

**NEBRASKA ARMY NATIONAL GUARD
FMS #1 SUSTAINMENT
LINCOLN, NEBRASKA**

SECTION 099113 - EXTERIOR PAINTING

PART 1 - GENERAL

1.1 SUMMARY

- A. Section includes surface preparation and the application of paint systems on the following exterior substrates:
 - 1. Steel.
- B. Paint all exposed surfaces whether or not colors are designated in "Schedules", except where the natural finish of the material is specifically noted as a surface not to be painted. Where items or surfaces are not specifically mentioned, paint these the same as adjacent similar materials or areas. If color or finish is not designated, the Architect will select these from standard colors available for the materials systems specified.

1.2 ACTION SUBMITTALS

- A. Product Data: For each type of product. Include preparation requirements and application instructions.
- B. Samples: For each type of paint system and each color and gloss of topcoat.
 - 1. Step all samples to show coats.
 - 2. Include manufactures product information and complete color formula with each sample.

1.3 MAINTENANCE MATERIAL SUBMITTALS

- A. Furnish extra materials that match products installed and that are packaged with protective covering for storage and identified with labels describing contents.
 - 1. Paint: 5 percent, but not less than **1 gal.** of each material and color applied.

PART 2 - PRODUCTS

2.1 MANUFACTURERS

- A. Products: Subject to compliance with requirements, provide products from Tnemec. **NO SUBSTITUTIONS!**

**NEBRASKA ARMY NATIONAL GUARD
FMS #1 SUSTAINMENT
LINCOLN, NEBRASKA**

2.2 PAINT, GENERAL

A. Material Compatibility:

1. Provide materials for use within each paint system that are compatible with one another and substrates indicated, under conditions of service and application as demonstrated by manufacturer, based on testing and field experience.
2. For each coat in a paint system, provide products recommended in writing by manufacturers of topcoat for use in paint system and on substrate indicated.

B. Colors: White at O.H. Door Jambs and Safety yellow at bollards.

PART 3 - EXECUTION

3.1 EXAMINATION

- A. Examine substrates and conditions, with Applicator present, for compliance with requirements for maximum moisture content and other conditions affecting performance of the Work.
- B. Verify suitability of substrates, including surface conditions and compatibility with existing finishes and primers.
- C. Proceed with coating application only after unsatisfactory conditions have been corrected.
 1. Application of coating indicates acceptance of surfaces and conditions.

3.2 PREPARATION

- A. Comply with manufacturer's written instructions and recommendations applicable to substrates and paint systems indicated.
- B. Clean substrates of substances that could impair bond of paints, including dust, dirt, oil, grease, and incompatible paints and encapsulants.
 1. Remove incompatible primers and reprime substrate with compatible primers or apply tie coat as required to produce paint systems indicated.

3.3 APPLICATION

- A. Apply paints according to manufacturer's written instructions and recommendations.
- B. Apply paints to produce surface films without cloudiness, spotting, holidays, laps, brush marks, roller tracking, runs, sags, ropiness, or other surface imperfections. Cut in sharp lines and color breaks.
- C. Perform no painting when surface temperature is below fifty degrees (50 degrees, F), while surface is damp, or during rainy weather. Avoid painting surfaces exposed to hot sun.

**NEBRASKA ARMY NATIONAL GUARD
FMS #1 SUSTAINMENT
LINCOLN, NEBRASKA**

3.4 CLEANING AND PROTECTION

- A. Protect work of other trades against damage from paint application. Correct damage to work of other trades by cleaning, repairing, replacing, and refinishing, as approved by Architect, and leave in an undamaged condition.
- B. At completion of construction activities of other trades, touch up and restore damaged or defaced painted surfaces.

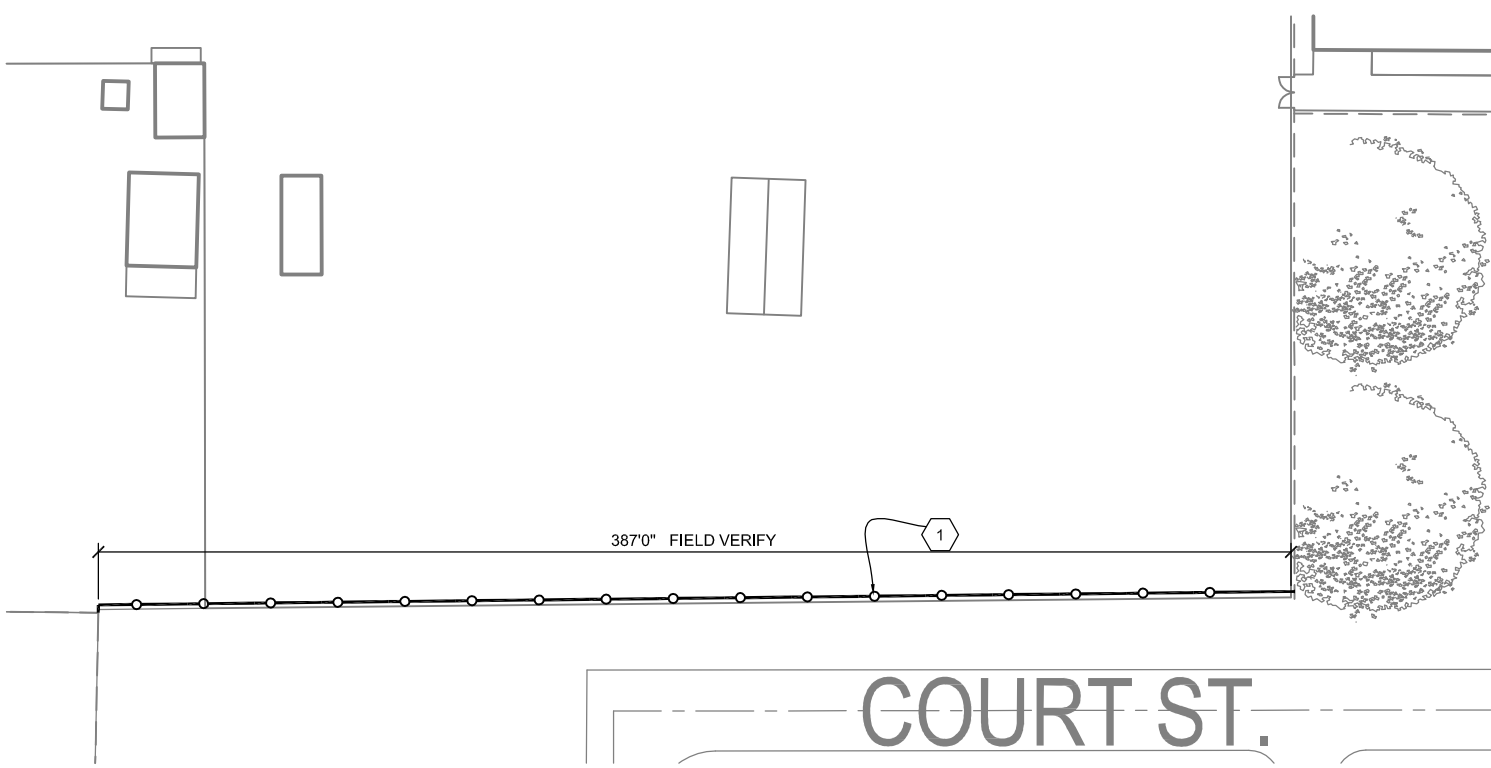
3.5 EXTERIOR PAINTING SCHEDULE

A. Metal Surfaces:

1. Ferrous Metal:

- a. Remove existing paint by mechanical or other means to achieve a surface similar to Abrasive blast existing steel to SSPC-SP6, commercial blast cleaning.
- b. Prime with One (1) coat Series 90-97 at DFT of 2.5 to 3.5 mils.
- c. Intermediate coat: One coat of N69 at DFT of 2-3 mils
- d. Finish with Series 740 at DFT of 2.5-3.5 mils.

END OF SECTION 099113



1

Partial Site Construction Plan

Scale: No Scale

Lincoln
1221 N Street, Suite 600
Lincoln NE 68508
Phone 402-476-9700
Fax 402-476-9722

Vermillion
15 East Main, Suite 201
Vermillion SD 57069
Phone 605-624-1081



Nebraska Army National Guard

Lincoln, NE 68508

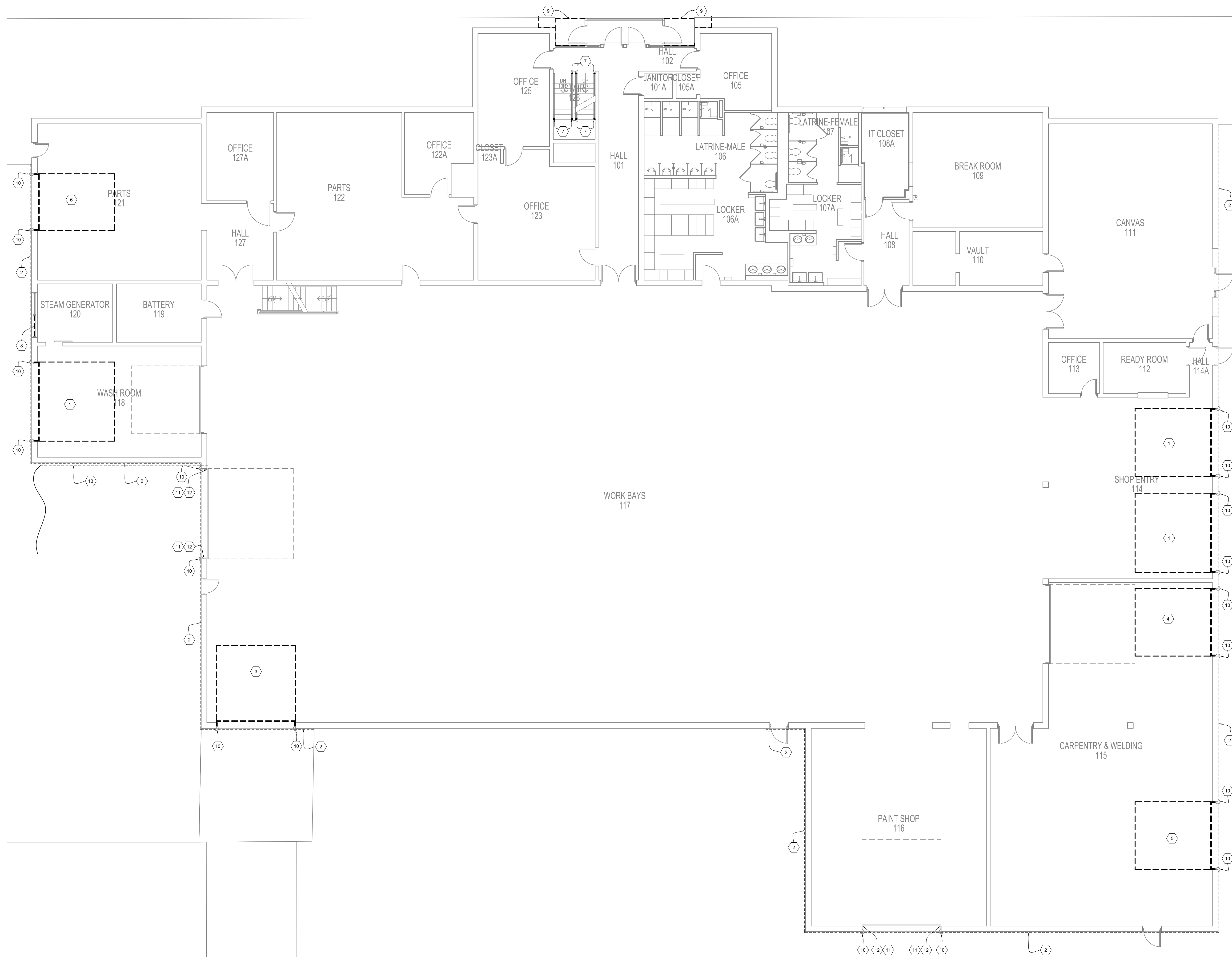
FMS#1 Sustainment

Issue Date	01-23-2014
Job #	14-0223
Drawn by:	Dan W.
CADD file:	C-102

COPYRIGHT © DAVIS DESIGN ALL RIGHTS RESERVED

Drawing Title
Partial Site Plan

From Sheet: C-102	for CA use:
Drawing # C-102.1	



ARCHITECTURAL GENERAL NOTES

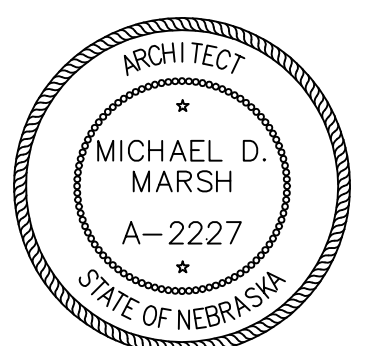
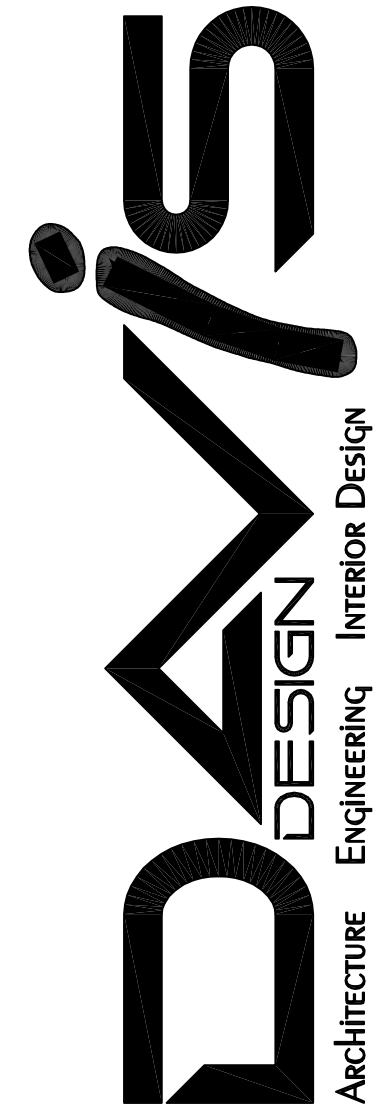
- A. Remove item's shown with heavy dashed linetype unless noted otherwise.
- B. Coordinate extent of demolition with new work shown in contract documents. Typical.
- C. Where demolition occurs next to existing construction to remain, match patch and repair disturbed area to a level consistent with the existing construction to remain.
- D. Protect all items, materials and/or surfaces not scheduled to be demolished.
- E. Refer to mechanical and electrical drawings for demolition of mechanical and electrical items.
- F. Areas of demolition shall be kept clean and safe. Dispose of debris daily and clean areas of work upon completion.
- G. Owner will salvage and remove loose equipment prior to the contractor beginning demolition. Verify that the Owner has completed salvage work prior to beginning of demolition work.

ARCHITECTURAL KEY NOTES

- 1 Remove existing overhead door including tracks, rails and motor.
- 2 Sawcut and remove asphaltic sealant joint. Indicated by heavy dashed line between concrete paving and building and in front of doors and overhead doors for new hot applied joint sealant. Refer to Sheet A-103 for products.
- 3 As part of AB#1, remove existing overhead door including tracks, rails and motor. Prepare exterior steel at jambs to be repainted.
- 4 As part of AB#2, remove existing overhead door including tracks, rails and motor. Prepare exterior steel at jambs to be repainted.
- 5 As part of AB#3, remove existing overhead door including tracks, rails and motor. Prepare exterior steel at jambs to be repainted.
- 6 As part of AB#4, remove existing overhead door including tracks, rails and motor. Prepare exterior steel at jambs to be repainted.
- 7 As part of AB#5, remove existing handrail returns. Sand smooth and prepare existing handrail to be painted.
- 8 Remove existing insulated metal panel in aluminum window frame.
- 9 Remove existing backer rod and sealant, vegetation, etc. from joints and between concrete paving and building. Prepare for new backer rod and sealant.
- 10 Sand and prepare for painting existing steel corner bollards/guards at each overhead door, typical. Paint.
- 11 Prepare exterior steel at jambs at existing o.h. door to be repainted. Paint.
- 12 Remove and replace brush seals at existing o.h. door jambs.
- 13 Remove and replace existing pneumatic copper line to treadle hose with new 1/4" copper pneumatic line. Test door operation after installation.

Lincoln
1221 N Street, Suite 600
Lincoln NE 68508
Phone 402-476-9700
Fax 402-476-9722

Vermillion
15 East Main, Suite 201
Vermillion SD 57069
Phone 605-624-1081



CLIENT INFORMATION
Nebraska Army National Guard
1111 Military Road
Lincoln, NE 68508

PROJECT INFORMATION
FMS #1 Sustainment

NEARNG Proj. No.: 31100108
Job # 14-0223

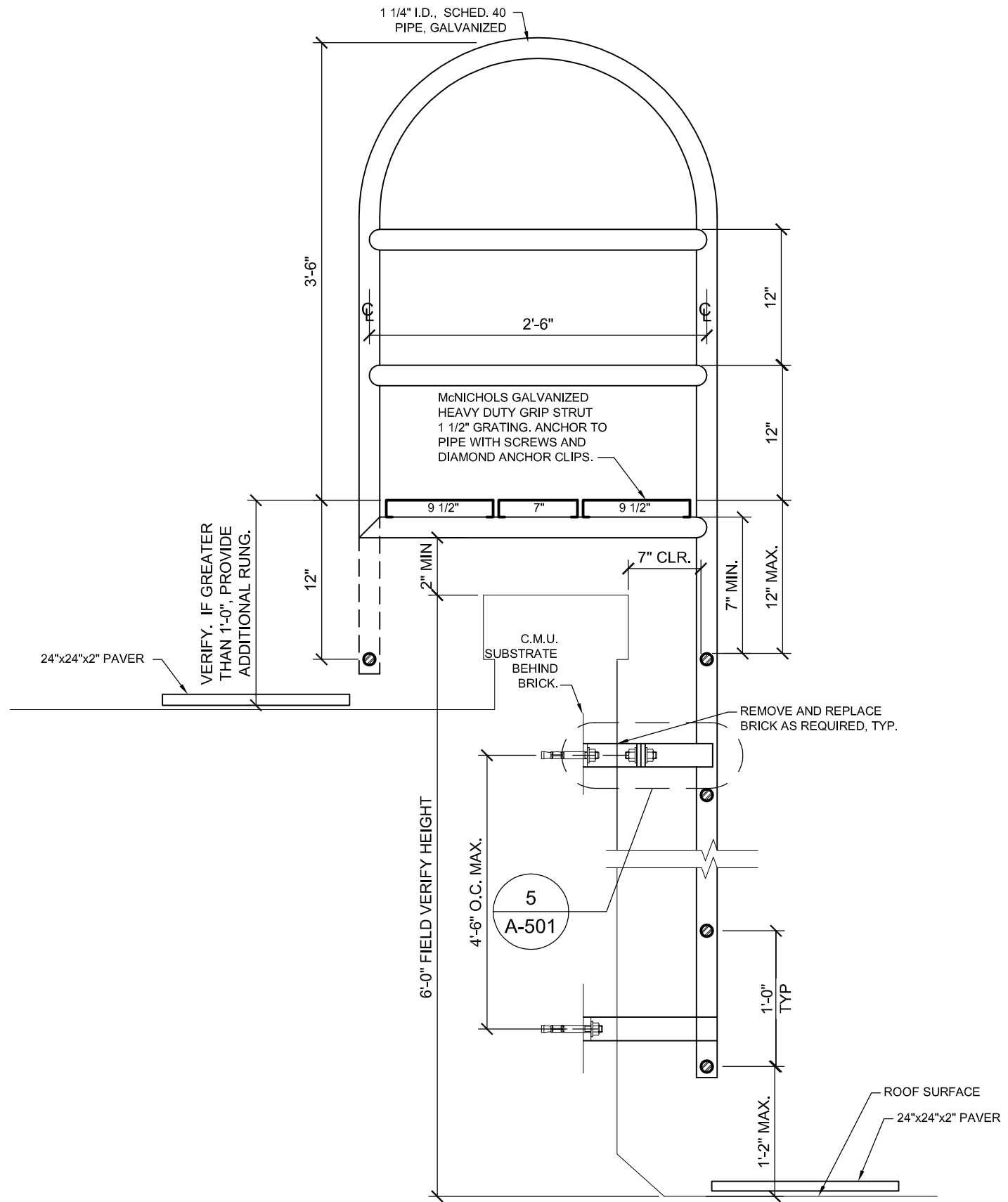
ISSUE DATE:	01-05-2015	
Revisions:		
ID	Date	Description
1	10/12/15	Sheet Released Addendum #1

CHECKED: Dan W.
AUTHOR: Dan W.
DAVIS DESIGN ALL RIGHTS RESERVED

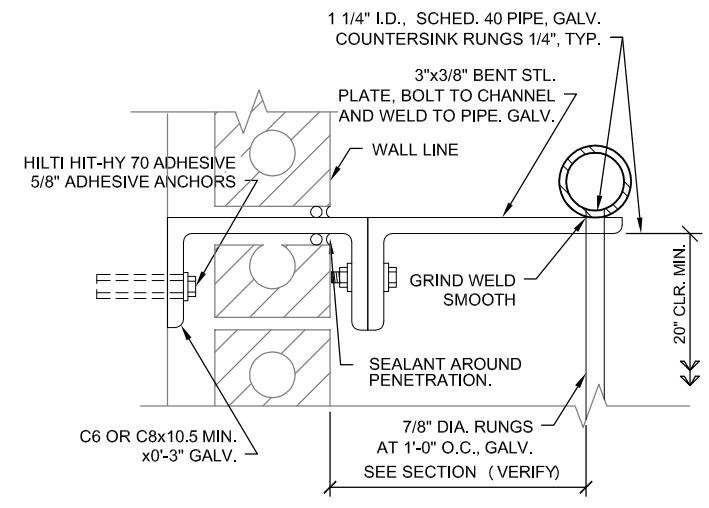
SHEET TITLE
First Floor Demolition Plan

SHEET NUMBER
A-101

1 1st Floor Demolition Plan
Scale: 1/8" = 1'-0"



4 Ladder Section
Scale: 1" = 1'-0"



5 Detail
Scale: No Scale

Lincoln
1221 N Street, Suite 600
Lincoln, NE 68508
Phone 402-476-9700
Fax 402-476-9722

Vermillion
15 East Main, Suite 201
Vermillion, SD 57069
Phone 605-624-1081



Nebraska Army
National Guard

Lincoln, NE 68508

FMS#1
Sustainment

Issue Date	01-23-2015
Job #	14-0223
Drawn by:	Dan W.
CADD file:	A-501
COPYRIGHT © DAVIS DESIGN ALL RIGHTS RESERVED	

Drawing Title
Ladder Details

From Sheet:	A-501	for CA use:
Drawing #	A-501.1	