

828-003-14

ADDENDUM NO. 2

The Architect/ Engineer issues this addendum, applicable to the above named project, to all known Contractors before receipt of proposal.

This addendum includes Item Number 2-1 thru 2-19. This addendum item shall be fully incorporated into the Bidding/Contract Documents and have the same force and effect as though originally included.

The Bidder shall acknowledge receipt of this Addendum No. 2 on the Bid Proposal Form in the place provided.

GENERAL

Item 2-1: Pre-Bid Sign-In Sheet

Attached is a list of the December 5, 2014 Pre-Bid meeting attendees.

Item 2-2: Staging Space

The General Contractor and their subcontractors may use the following areas for project staging: turfed area at the northeast corner of the church property (north of alley, east of parking lot), the portion of the parking lot to the east of the basketball hoops/primary parking lot, as well as the turfed area to the east of the church building near the raised planter boxes. The accessible parking spaces and drive aisle directly to the east of the building are to remain clear and should not be used as staging space.

Item 2-3: Document 00 42 00 – BID FORM

The City of Beatrice will charge a tapping / service fee to bring the fire service to the property line at which point the contractor will be responsible for the remaining service connection. This fee will be **\$8,536.96**, the fee will not be susceptible to contractor mark-up. Contact Steve Kelley *Water Superintendent* skelley@beatrice.ne.gov or (402) 228-5229 for payment and planning. **THIS AMOUNT NEEDS TO BE INCLUDED WITHIN THE BASE BID ALONG WITH ALL OTHER APPLICABLE PERMIT & APPLICATION FEES.**

Item 2-4: Document 00 42 00 – BID FORM

Refer to 1.3 BID SUPPLEMENTS, ALTERNATE A-1
Remove Item 1 Cab Flooring from scope of project and alternate.

Item 2-5: Section 01 23 00 – ALTERNATES

Refer to 3.1 SCHEDULE OF ALTERNATES
Remove Item 1 Cab Flooring from scope of project and alternate.

ARCHITECTURAL

Item 2-6: Section 14 21 00 – HYDRAULIC ELEVATOR MODERNIZATION

Refer to 2.2 MATERIALS AND COMPONENTS, ITEM F. Passenger Cab Interior (ALTERNATE A-1)
Remove Item 1 Cab Flooring from scope of project and alternate.

828-003-14

MECHANICAL

Specification

Item 2-7: Section 21 13 13 – Fire Suppression System

1.3.O The entire facility, including interstitial areas with combustibles, are to be protected per NFPA 13, at no additional cost to the owner. This is to include but not limited to areas between multiple-level ceilings, storage areas, attic spaces, etc.. Include allowances in the bid to accompany these areas, assume worst case (large area) if unsure which areas apply.

Item 2-8: Section 21 13 13 – Fire Suppression System

1.3.P The fire suppression plans provide shaded areas and square foot estimates, it shall be the fire suppression contractors responsibility to verify shaded areas and square footage prior bidding or ordering any equipment.

Item 2-9: Section 21 13 13 – Fire Suppression System

Clarification: The piping upstream of the back flow preventer and above ground (not buried) must comply with NFPA 13 not NFPA 24. Thus see specification section 21 13 13.2.2A for piping requirements.

Item 2-10: Section 22 11 13 – Facility Water Service Piping

1.1.C The City of Beatrice will charge a tapping / service fee to bring the fire service to the property line at which point the contractor will be responsible for the remaining service connection. This fee will be **\$8,536.96**, the fee will not be susceptible to contractor mark-up. Contact Steve Kelley *Water Superintendent* skelley@beatrice.ne.gov or (402) 228-5229 for payment and planning.

Drawings

Item 2-11: Sheet M0.01 – Mechanical Site Plan

M0.01 has been re-issued in its entirety to show the fire service tying into the 8" water service main on the south side of Elk Street with a 6" tap.

Item 2-12: Sheet M1.01 through M1.04 – Fire Sprinkler Schedule

Remark 6. The fire sprinkler type listed in the schedule is the preferred type, if the preferred type will not meet NFPA 13 requirements it shall be the responsibility of the fire suppression contractor to make the necessary change to meet the code regulation at no additional cost to the owner, typical.

Item 2-13: Sheet M1.04 – Bell Tower / Attic Fire Suppression Plan

M1.4 has been re-issued in its entirety to include additional areas to protect with the dry piping system.

Item 2-14: Sheet M3.01 – Elevator Optimization Plans

M1.4 has been re-issued in its entirety to include changes to the fan coils, see revised schedule for changes.

828-003-14

ELECTRICAL

Specification

- Item 2-15: Section 28 31 11 – Fire Alarm and Emergency Voice Evacuation System**
- a. EST brand shall be allowed as an acceptable manufacturer.
 - b. If it saves the owner money, it is acceptable to provide a fire alarm control panel with a separate voice evacuation panel, with the two interfaced together.

Drawings

- Item 2-16: Sheet E0.00 – Electrical Symbols Legend, Abbreviations & General Notes**
Add the 'Lamp Replacement Schedule' to this sheet. See the attached Supplemental Drawing SDE-001 for additional information.

- Item 2-17: Sheet E1.01 – Lower Level Electrical Plan**
- a. In Fellowship Hall 011, remove hex note number seventeen.
 - b. The locations of the two fan coil units have changed. FC-1 is now in Elevator Lobby 113 and FC-2 is in Elevator Equipment 112.
 - c. One 8 1/2" x 11" portion of this sheet is revised and reissued as a part of this Addendum. See the attached Supplemental Drawing SDE-002 for additional information.
 - d. Revise 'Lower Level Electrical Plan Note' number four to read as follows: "4. If the existing emergency light is not battery back-up, or is not working correctly, then remove it and replace it with a new emergency fixture."
 - e. Revise 'Lower Level Electrical Plan Note' number fourteen to read as follows: "14. Circuit to a spare 20A/1P circuit breaker in the existing panelboard 'D'."
 - f. Change 'Lower Level Electrical Plan Note' number seventeen to read as follows: "17. Existing panelboard 'D', 225A, 208Y/120V, 3-phase, 4-wire."
 - g. Revise 'Lower Level Electrical Plan Note' number eighteen to read as follows: "18. Provide....Circuit to a spare 20A/1P circuit breaker in the existing panelboard 'D'."

- Item 2-18: Sheet E1.02 – Main Level Electrical Plan**
- a. One 11" x 17" portion of this sheet is revised and reissued as a part of this Addendum. See the attached Supplemental Drawing SDE-003 for additional information.
 - b. Revise 'Main Level Electrical Plan Note' number twenty to read as follows: "20. Heat pump...Provide a new 40A/2P circuit breaker in the existing panelboard 'D' in the boiler room 004. Locate the new breaker in an existing 2-pole spare. New breaker shall be fully compatible with the existing panelboard and shall maintain the fault current rating and UL listing of the panelboard. Route 2-#8 and 1-#10 GRND in 1/2" conduit back to the existing panelboard."
 - c. Revise 'Main Level Electrical Plan Note' number twenty-eight to read as follows: "28. The light...See the lamp replacement schedule (sheet E0.00) for additional information."
 - d. Add note number twenty-nine to the 'Main Level Electrical Plan Notes', to read as follows: "29. Existing circuit shall be shifted from the existing panelboard (note #25) to the inverter (note #2). Coordinate with the inverter requirements."
 - e. Add note number thirty to the 'Main Level Electrical Plan Notes', to read as follows: "30. The existing sound system shall be tied into the fire alarm system so that if the fire alarm system goes off it will override the sound system."

828-003-14

- f. Add note number thirty-one to the 'Main Level Electrical Plan Notes', to read as follows: "31. There are two spotlight boxes in this room and each one has four 150w lamps. Replace each existing lamp with a led lamp and a 40w module, Manning cat. no. GCR-064, or equivalent. Coordinate with the existing spotlight boxes."

Item 2-19: Sheet E1.03 – Upper Level Electrical Plan

- a. One 8 1/2" x 11" portion of this sheet is revised and reissued as a part of this Addendum. See the attached Supplemental Drawing SDE-004 for additional information.
- b. Revise 'Upper Level Electrical Plan Note' number one to read as follows: "1. These light fixtures currently have incandescent lamping in them. All of these lamps will be replaced with LED lamping. See the lamp replacement schedule (sheet E0.00) for...."
- c. Revise 'Upper Level Electrical Plan Note' number three to read as follows: "3. If the existing emergency light is not battery back-up type, or is not working correctly, then remove it and replace it with a new emergency fixture."
- d. Add note number twelve to the 'Upper Level Electrical Plan Notes', to read as follows: "12. Existing circuit shall be shifted from the existing panelboard for sanctuary lighting (sheet E1.92) to the inverter (sheet E1.02). Coordinate with the inverter requirements."

END OF ADDENDUM NO. 2

**Centenary United Methodist Church
Fire Sprinkler / Fire Alarm Life Safety Improvements**

Pre-Bid Meeting Sign-In

Project Number: 828-003-14

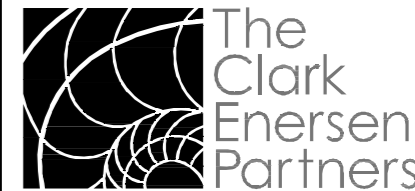
Date: December 2, 2014



The
Clark
Enersen
Partners

Architecture
Landscape Architecture
Engineering
Interiors

Name	Company	Phone Number	E-mail
BRIAN Scheele	Plymouth Electric	402-656-4505	bscheele@plymouthelectric.com
Matt Mostek	NGC Group	402-261-5489	mmostek@ngcgroupinc.com
JOE WENDT	Kingery Construction	402-465-4400	josephw@kccobuilders.com
Josh Vogel	KONE Inc	402-592-7781	joshvogel@kone.com
NICK McSHANNON	AHERN	402-657-3099	NMCSHANNON@AHERNFIRE.COM
Jon Eicher	ABC Electric	402-435-3514	jon@abcelectric.net
Mack Wau	CHEEVER CONST.	402-477-2745	mwau@cheeverconstruction.com
Jack Ballou	Haco Electric	402-304-5191	jack@hacoelectric.com



Architecture
Landscape Architecture
Engineering
Interiors

www.clarkenersen.com

Lincoln, Nebraska
1010 Lincoln Mall, Suite 200
Lincoln, NE 68508-2883
402 477.9291 Fax 402 477.6542

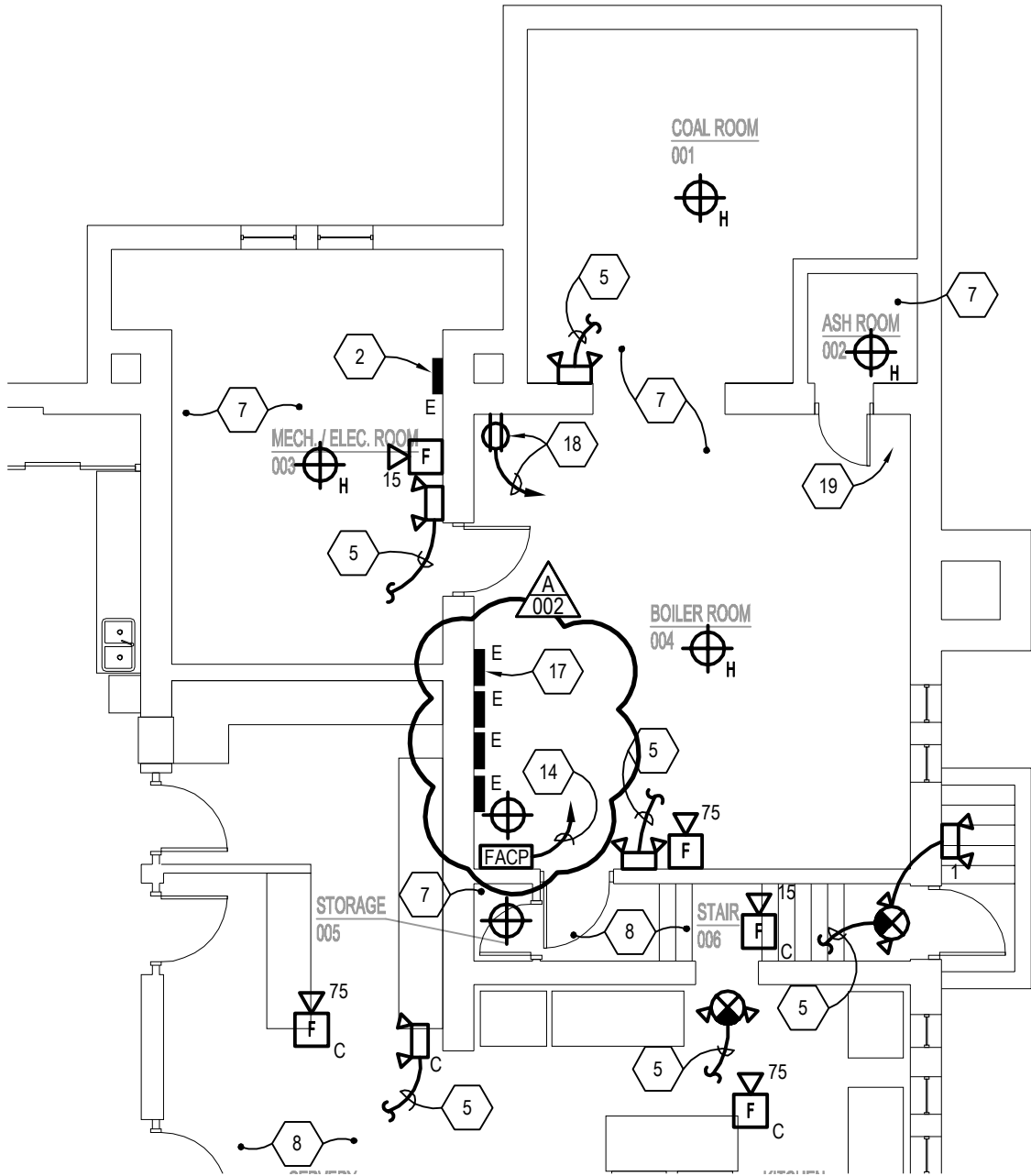
Kansas City, Missouri
Fairway, Kansas

LAMP REPLACEMENT SCHEDULE

FIXTURE TYPE	FIXTURE DESCRIPTION	EXISTING INCANDESCENT LAMPS	REPLACEMENT LED LAMPS
E1	WALL SCONCE	2 - 60 WATT	2 - 9.5 WATT, CREE A19-60W-27K (OR EQUIVALENT)
E2	CEILING MOUNTED - BELOW THE BALCONY	3 - 60 WATT	3 - 9.5 WATT, CREE A19-60W-27K (OR EQUIVALENT)
E3	PENDANT - SIDE AISLES	1 - 60 WATT	1 - 9.5 WATT, CREE A19-60W-27K (OR EQUIVALENT)
E4	CEILING MOUNTED - FRONT SIDES	2 - 60 WATT	2 - 9.5 WATT, CREE A19-60W-27K (OR EQUIVALENT)
E5	LARGE PENDANT - OVER SEATING	6 - 60 WATT & 1 - 150 WATT	6 - 9.5 WATT, CREE A19-60W-27K (OR EQUIVALENT) & 1 - 45 W, LED UNIVERSAL LIGHT 31083, 3000K (OR EQUIVALENT)

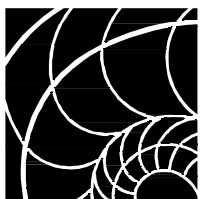
Centenary United Methodist Church
Fire & Life Safety Improvements
Beatrice, Nebraska
TCEP No.: 828-003-14

Addendum #002
Supplemental Drawing: SDE-001
Revision of Sheet: E0.00
Date: December 08, 2014



LOWER LEVEL ELECTRICAL PLAN

SCALE: 1/8"=1'-0"

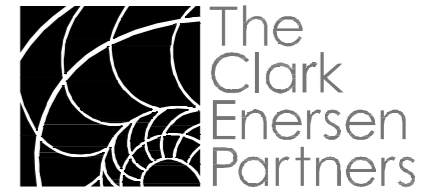


The
Clark
Enersen
Partners

Architecture + Landscape Architecture + Engineering + Interiors
1010 Lincoln Mall, Suite 200 Lincoln, NE 68508-2883
402 477.9291 Fax 402 477.6542
Kansas City, MO Fairway, KS www.clarkenersen.com

Centenary United Methodist Church Fire & Life Safety Improvements
Beatrice, Nebraska
TCEP Project No.: 828-003-14

Addendum #002
Supplemental Drawing: SDE-002
Revision of Sheet: E1.01
Date: December 8, 2014

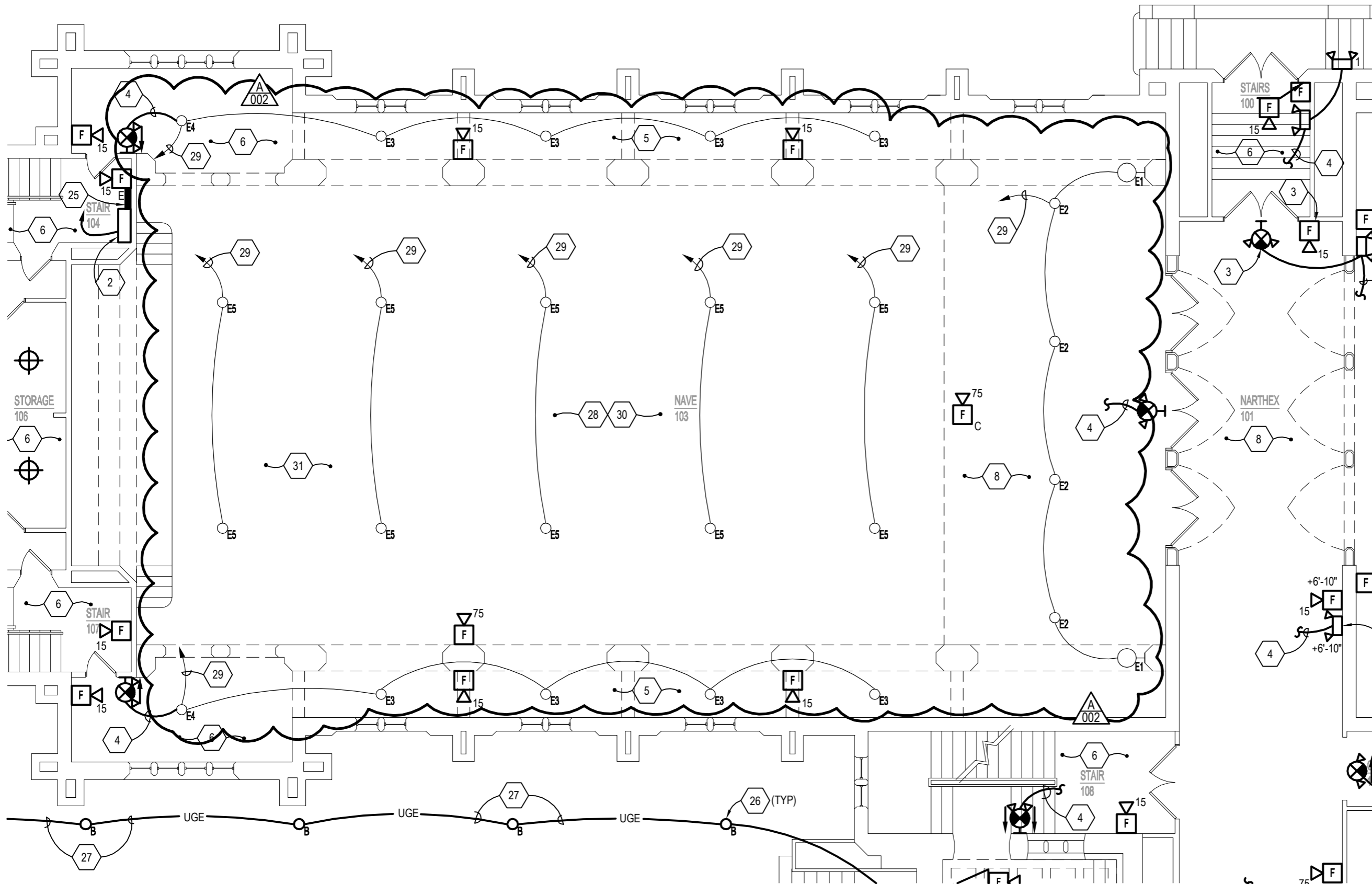


Architecture
Landscape Architecture
Engineering
Interiors

www.clarkenersen.com

Lincoln, Nebraska
1010 Lincoln Mall, Suite 200
Lincoln, NE 68508-2883
402.477.9291 Fax 402.477.6542

Kansas City, Missouri
Fairway, Kansas

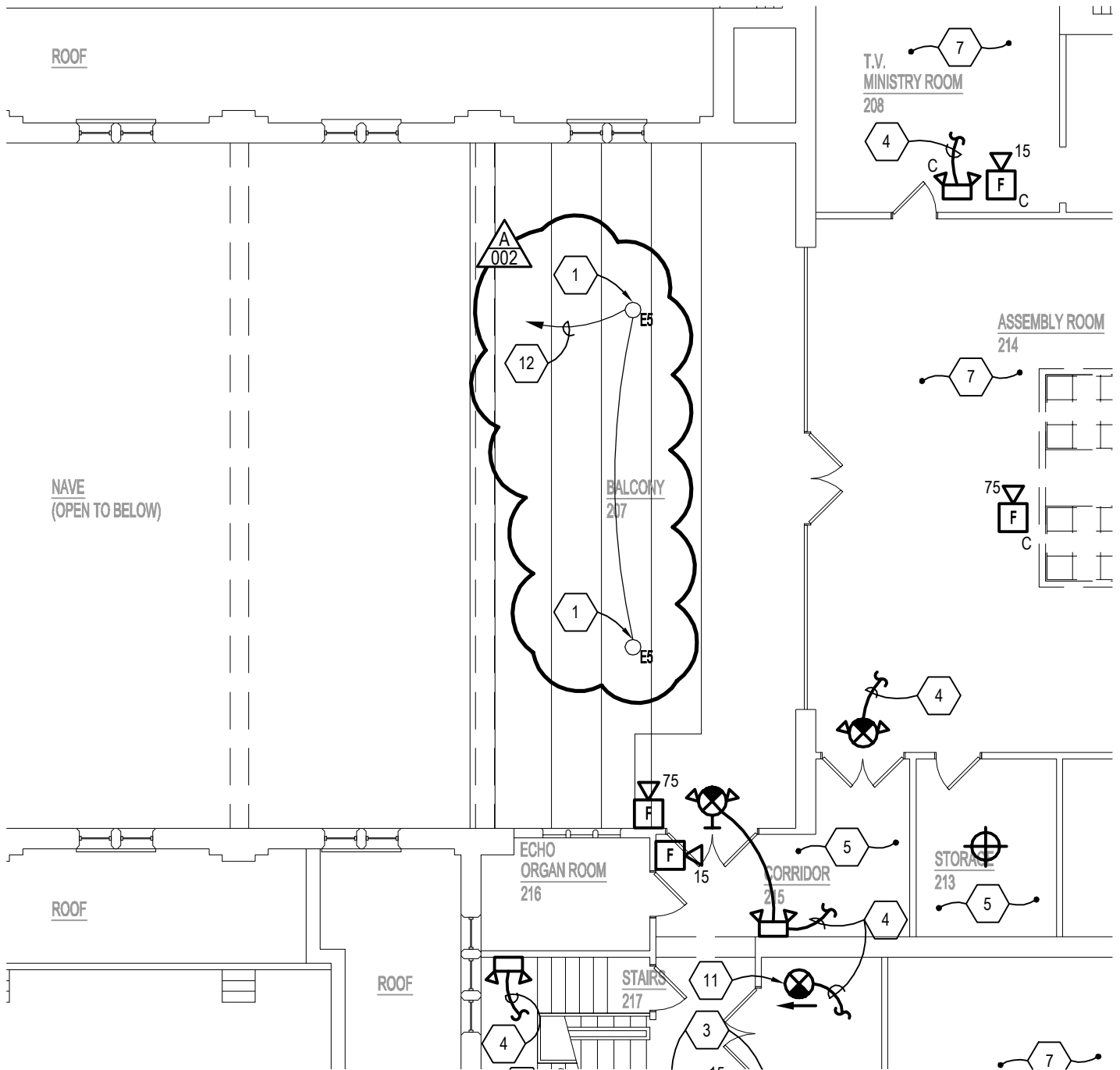


MAIN LEVEL ELECTRICAL PLAN

SCALE: 1/8"=1'-0"

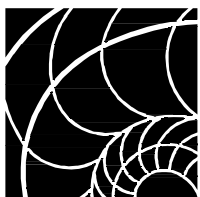
Centenary United Methodist Church
Fire & Life Safety Improvements
Beatrice, Nebraska
TCEP No.: 828-003-14

Addendum #002
Supplemental Drawing: SDE-003
Revision of Sheet: E1.02
Date: December 08, 2014



UPPER LEVEL ELECTRICAL PLAN

SCALE: 1/8"=1'-0"

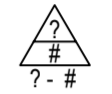


The
Clark
Enersen
Partners

Architecture + Landscape Architecture + Engineering + Interiors
 1010 Lincoln Mall, Suite 200 Lincoln, NE 68508-2883
 402.477.9291 Fax 402.477.6542
 Kansas City, MO Fairway, KS www.clarkenersen.com

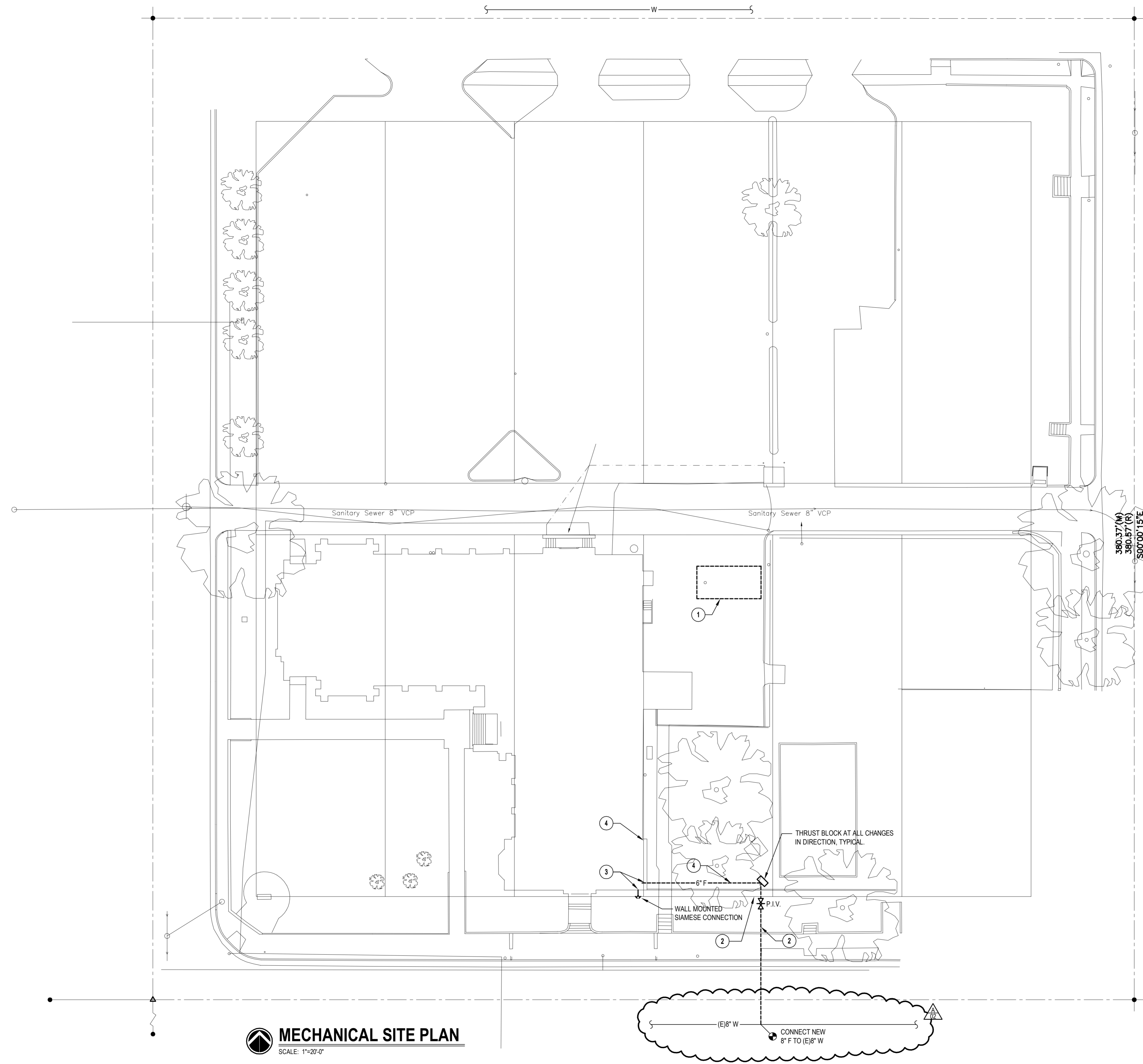
Centenary United Methodist Church Fire & Life Safety Improvements
 Beatrice, Nebraska
 TCEP Project No.: 828-003-14

Addendum #002
 Supplemental Drawing: SDE-004
 Revision of Sheet: E1.03
 Date: December 8, 2014



SHEET HISTORY:

ISSUED	11/19/2014	AS PER CONSTR. DOCUMENTS
A - 02	12/09/2014	AS PER ADDENDUM #02



MECHANICAL SITE PLAN

SCALE: 1"=20'-0"

SITE PLAN NOTES:

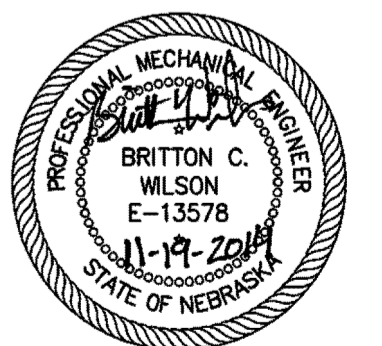
- 1 ABANDONED UNDERGROUND TANK. AT THE TIME OF DESIGN THERE WAS NOT INFORMATION AVAILABLE AS TO THE CONTENTS, SIZE, DEPTH, ETC. CONTRACTOR TO AVOID EXISTING TANK IN ITS ENTIRETY WHEN ROUTING NEW FIRE MAIN INTO BUILDING.
- 2 THE CITY OF BEATRICE WILL TIE INTO THE CITY MAIN AND ROUTE THE PIPE TO THE PROPERTY LINE. A FEE WILL BE CHARGED FOR THIS SERVICE. THE SITE UTILITY CONTRACTOR TO TIE INTO THE MAIN WHERE THE CITY LEFT OFF AND ROUTE INTO BUILDING. COORDINATE WITH CITY WHEN INSTALL AND CONNECTING TO THE MAIN. GENERAL CONTRACTOR TO OBTAIN PRICE FROM CITY UTILITY AND INCLUDE IN BID PRICING.
- 3 SEAL ALL PENETRATIONS WITH LINK SEAL MODEL LS OR EQUIVALENT, TYPICAL.
- 4 FIRE MAIN WILL NEED TO BE FIRE PROTECTED IN CRAWL SPACE. CONTRACTOR TO VERIFY ROUTE PRIOR TO BIDDING. AN ALTERNATE FIRE MAIN LOCATION CAN BE PROPOSED AT THE TIME OF BIDDING BY THE CONTRACTOR IF THE REVISED FIRE MAIN WILL BE MORE COST EFFECTIVE TO INSTALL.

**Centenary United Methodist Church
Fire Sprinkler / Fire Alarm
Life Safety Improvements**

608 Elk Street
Beatrice, Nebraska

TCEP No.: 828-003-14

November 19, 2014



Mechanical Site Plan

M0.01



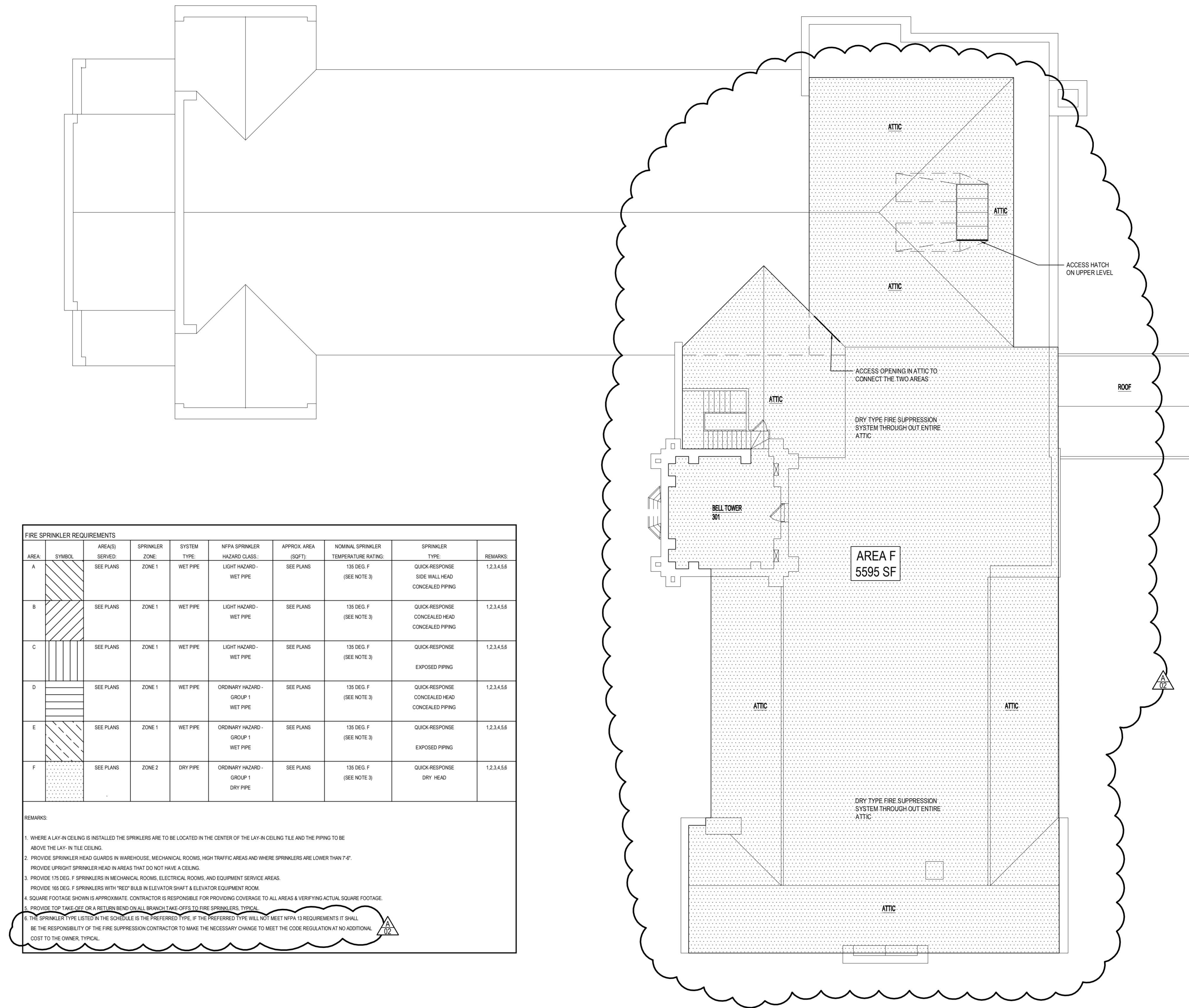
SHEET HISTORY:

ISSUED 11/19/2014 AS PER CONSTR. DOCUMENTS
A - 02 12/09/2014 AS PER ADDENDUM #02

FIRE SPRINKLER REQUIREMENTS									
AREA	SYMBOL	AREA(S) SERVED	SPRINKLER ZONE	SYSTEM TYPE	NFPA SPRINKLER HAZARD CLASS	APPROX. AREA (SQFT)	NOMINAL SPRINKLER TEMPERATURE RATING	SPRINKLER TYPE	REMARKS
A	[Symbol]	SEE PLANS	ZONE 1	WET PIPE	LIGHT HAZARD - WET PIPE	SEE PLANS	135 DEG. F (SEE NOTE 3)	QUICK-RESPONSE SIDE WALL HEAD CONCEALED PIPING	1,2,3,4,5,6
B	[Symbol]	SEE PLANS	ZONE 1	WET PIPE	LIGHT HAZARD - WET PIPE	SEE PLANS	135 DEG. F (SEE NOTE 3)	QUICK-RESPONSE CONCEALED HEAD CONCEALED PIPING	1,2,3,4,5,6
C	[Symbol]	SEE PLANS	ZONE 1	WET PIPE	LIGHT HAZARD - WET PIPE	SEE PLANS	135 DEG. F (SEE NOTE 3)	QUICK-RESPONSE EXPOSED PIPING	1,2,3,4,5,6
D	[Symbol]	SEE PLANS	ZONE 1	WET PIPE	ORDINARY HAZARD - GROUP 1 WET PIPE	SEE PLANS	135 DEG. F (SEE NOTE 3)	QUICK-RESPONSE CONCEALED HEAD CONCEALED PIPING	1,2,3,4,5,6
E	[Symbol]	SEE PLANS	ZONE 1	WET PIPE	ORDINARY HAZARD - GROUP 1 WET PIPE	SEE PLANS	135 DEG. F (SEE NOTE 3)	QUICK-RESPONSE EXPOSED PIPING	1,2,3,4,5,6
F	[Symbol]	SEE PLANS	ZONE 2	DRY PIPE	ORDINARY HAZARD - GROUP 1 DRY PIPE	SEE PLANS	135 DEG. F (SEE NOTE 3)	QUICK-RESPONSE DRY HEAD	1,2,3,4,5,6

REMARKS:

- WHERE A LAY-IN CEILING IS INSTALLED THE SPRINKLERS ARE TO BE LOCATED IN THE CENTER OF THE LAY-IN CEILING TILE AND THE PIPING TO BE ABOVE THE LAY-IN TILE CEILING.
- PROVIDE SPRINKLER HEAD GUARDS IN WAREHOUSE, MECHANICAL ROOMS, HIGH TRAFFIC AREAS AND WHERE SPRINKLERS ARE LOWER THAN 7'-0". PROVIDE UPRIGHT SPRINKLER HEAD IN AREAS THAT DO NOT HAVE A CEILING.
- PROVIDE 175 DEG. F SPRINKLERS IN MECHANICAL ROOMS, ELECTRICAL ROOMS, AND EQUIPMENT SERVICE AREAS.
- PROVIDE 165 DEG. F SPRINKLERS WITH "RED" BULB IN ELEVATOR SHAFT & ELEVATOR EQUIPMENT ROOM.
- SQUARE FOOTAGE SHOWN IS APPROXIMATE. CONTRACTOR IS RESPONSIBLE FOR PROVIDING COVERAGE TO ALL AREAS & VERIFYING ACTUAL SQUARE FOOTAGE.
- PROVIDE TOP TAKE-OFF OR A RETURN BEND ON ALL BRANCH TAKE-OFFS TO FIRE SPRINKLERS, TYPICAL.
- THE SPRINKLER TYPE LISTED IN THE SCHEDULE IS THE PREFERRED TYPE. IF THE PREFERRED TYPE WILL NOT MEET NFPA 13 REQUIREMENTS IT SHALL BE THE RESPONSIBILITY OF THE FIRE SUPPRESSION CONTRACTOR TO MAKE THE NECESSARY CHANGE TO MEET THE CODE REGULATION AT NO ADDITIONAL COST TO THE OWNER, TYPICAL.



BELL TOWER/ATTIC FIRE SUPPRESSION PLAN

SCALE: 1/8"=1'-0"

NOTES:

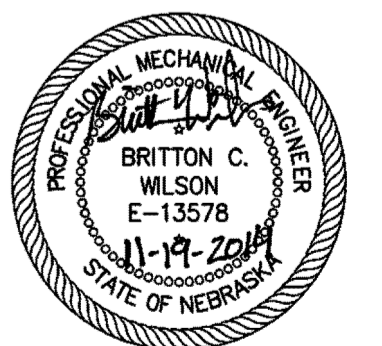
- ALL EXPOSED PIPING TO BE PAINTED TO MATCH ADJACENT STRUCTURE, WALL, OR CEILING UNLESS OTHERWISE NOTED. COORDINATE COLOR WITH ARCHITECT.
- COORDINATE WITH GENERAL CONTRACTOR TO REPAIR, PATCH, REMOVE, AND RE-INSTALL ANY SITE CONDITIONS BACK TO MATCH EXISTING CONDITIONS. THIS IS TO INCLUDE BUT IS NOT LIMITED TO REPAIR OR REPLACEMENT OF APC CEILINGS, PLASTER CEILINGS, WALLS, AND FLOORS.
- FIRE SUPPRESSION CONTRACTOR TO CONCEAL FIRE SUPPRESSION PIPING AND SPRINKLERS WHERE POSSIBLE. EXAMPLE: IF AN AREA IS LABELED (AREA C) WHICH THE ENGINEER HAS DETERMINED IT WILL BE AN EXPOSED PIPING AREA, BUT THE FIRE SUPPRESSION CONTRACTOR CAN CONCEAL THE PIPING, THE FIRE SUPPRESSION CONTRACTOR SHALL CONCEAL THE PIPING. IN ALL AREAS WITH APC CEILINGS THE FIRE SUPPRESSION PIPING SHALL BE INSTALLED ABOVE THE APC.

**Centenary United Methodist Church
Fire Sprinkler / Fire Alarm
Life Safety Improvements**

608 Elk Street
Beatrice, Nebraska

TCEP No.: 828-003-14

November 19, 2014



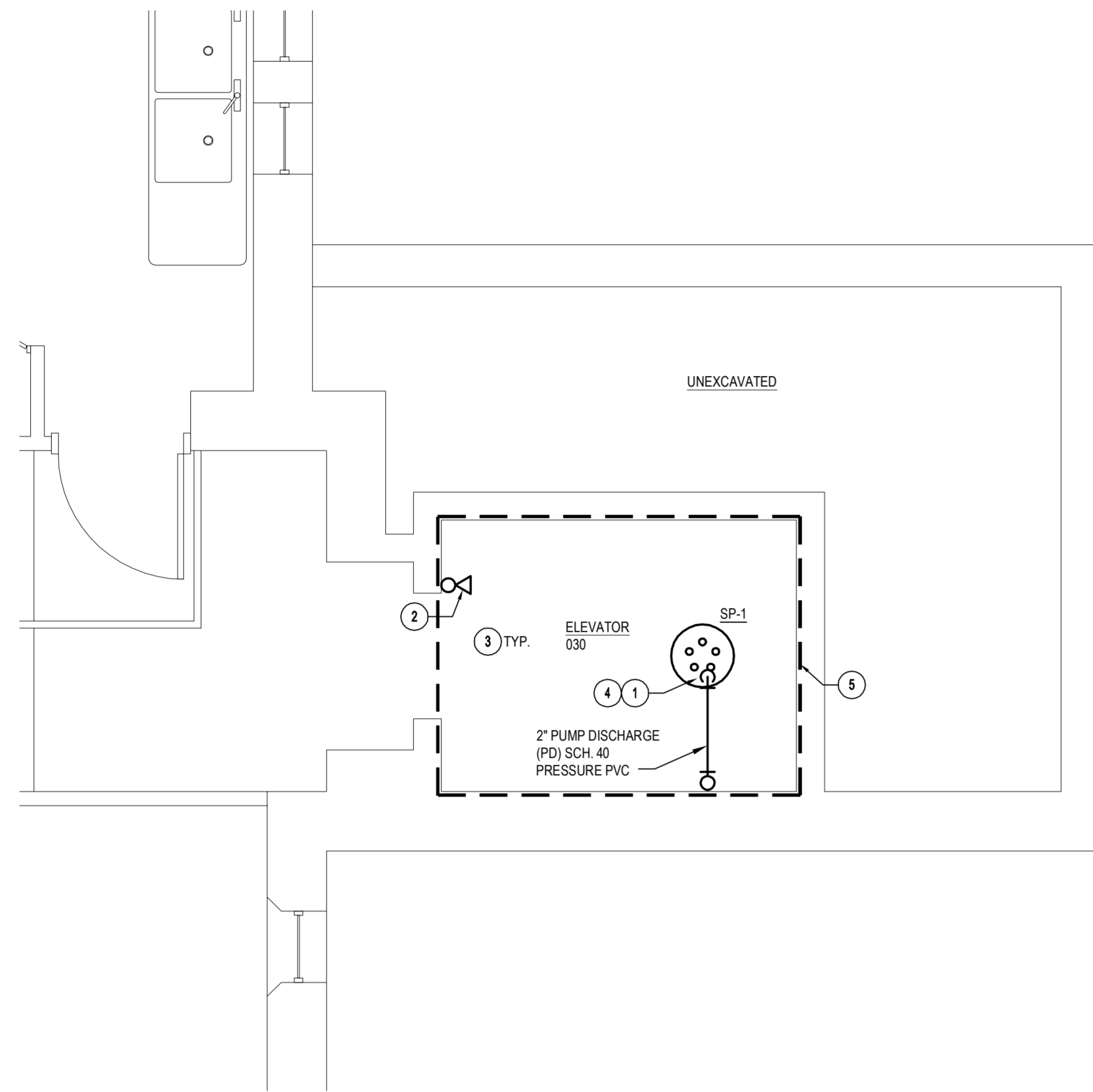
Bell Tower/Attic
Fire Suppression Plan

M1.04



SHEET HISTORY:

ISSUED 11/19/2014 AS PER CONSTR. DOCUMENTS
A - 02 12/09/2014 AS PER ADDENDUM #02



LOWER LEVEL ELEVATOR OPTIMIZATION PLAN

SCALE: 3/8"=1'-0"

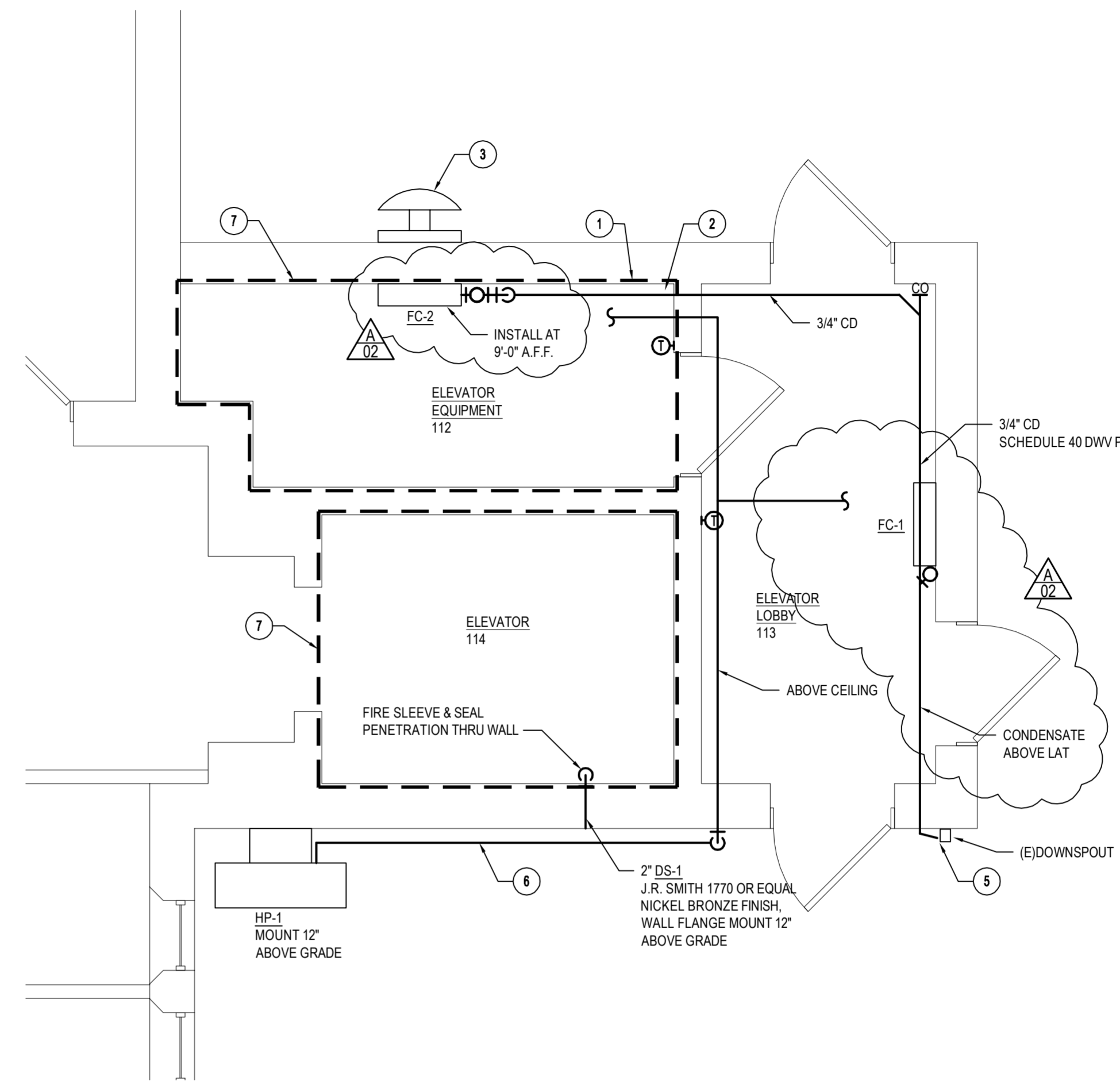
NOTES:

1. PROVIDE AND INSTALL A SUMP BASIN FLUSH WITH ELEVATOR FLOOR. PROVIDE A 24" DIAMETER X 30" DEEP BASIN WITH STEEL LID AND NO PERIMETER OPENINGS. PROVIDE A FIELD FABRICATED 24" DIAMETER STEEL LID PAINTED BLACK WITH (5) 2" HOLES PROPORTIONALLY AROUND THE TOP IN ADDITION TO THE REQUIRED PUMP DISCHARGE OPENING AND POWER CORD. THE LID SHALL BE RATED TO 150 LB/SF.
2. INSTALL FIRE SUPPRESSION HEAD NO MORE THAN 2'-0" ABOVE THE PIT FLOOR. PROVIDE A RED THERMAL ELEMENT THAT DISCHARGES AT APPROXIMATELY 165°F.
3. INSTALL NECESSARY HEAT DETECTION DEVICES PER NFPA AND ASTM A17.1-2013 STANDARDS. COORDINATE WITH ELECTRICAL CONTRACTOR AND ELEVATOR CONTRACTOR ANY ADDITIONAL ELEVATOR OPTIMIZATION UPGRADES THAT MAY AFFECT MECHANICAL SYSTEMS.
4. SP-1 TO BE PLUGGED INTO A "SINGLE NON GFCI OUTLET". THE OUTLET SHALL BE INSTALLED AT APPROXIMATELY 4'-0" ABOVE THE PIT FLOOR SO NOT MORE THAN 6'-0" OF POWER CORD IS EXPOSED.
5. PROVIDE ALL NECESSARY UPGRADES AT NO ADDITIONAL COST TO THE OWNER AFTER BIDDING TO MAKE THE ELEVATOR AND ASSOCIATED EQUIPMENT COMPLIANT WITH THE ADOPTED NEBRASKA ELEVATOR CODES TO INCLUDE BUT NOT LIMITED TO ASME A17.1-2013.

PUMP SCHEDULE														
MARK	DESCRIPTION	OPERATING WATER	FLUID	WATER FLOW	TOTAL HEAD	MOTOR DATA	MANUFACTURER & MODEL NO.				SIZE	REMARKS		
						RPM	HP	V	PHASE	HZ				
SP-1	ELEVATOR SUMP PUMP	70 DEG F	WATER	50	26	NA	3460	3/4	115	1	60	LIBERTY 283	1 1/2" OUTLET	1.2,3.4

REMARKS:

1. PROVIDE EPOXY COATED CAST IRON CASING WITH NON-METALLIC IMPELLER, CERAMIC SHAFT, CARBON BEARINGS, STAINLESS STEEL HARDWARE, THERMAL OVERLOAD PROTECTION
2. PROVIDE WITH MANUFACTURER RECOMMENDED 1 1/2" CHECK VALVE, 1/2" POWER CORD, PIGGY BACK FLOAT SWITCH
3. PLUG THE POWER CORD INTO THE SINGLE NON-GFCI PROVIDED OUTLET NEAREST THE PUMP, THAT LIMITS THE EXPOSED CORD TO 6' OR LESS.
4. PROVIDE A SUMP PUMP BASIN 24" X 30" DEEP WITH FIELD FABRICATED STEEL LID WITH (5) 2" HOLES IN LID TO FACILITATE DRAINING 3000 GAL/HR. THE LID SHALL BE RATED FOR 150 LB/SF. THE SUMP BASIN TO BE COMPLETELY SEALED AROUND THE SIDE AND BOTTOM AND INSTALLED FLUSH WITH THE PIT FLOOR



MAIN LEVEL ELEVATOR OPTIMIZATION PLAN

SCALE: 3/8"=1'-0"

NOTES:

1. PROVIDE A 1HR ENCLOSURE IN ELEVATOR EQUIPMENT ROOM. SLEEVE AND SEAL ALL PENETRATIONS THROUGH WALL WITH FIRE RATED CAULK AND RATED FIRE SLEEVE. REMOVE ALL EQUIPMENT, PIPING, CONDUIT, ETC. THAT DO NOT SERVE ELEVATOR OR ELEVATOR EQUIPMENT.
2. PROVIDE AN ABC TYPE FIRE EXTINGUISHER, SIZE PER THE ROOM DIMENSIONS. AT A MINIMUM PROVIDE A 10 LB FIRE EXTINGUISHER.
3. REMOVE AND CAP EXISTING EXHAUST FAN AND ALL ASSOCIATED ACCESSORIES. PATCH AND SEAL WALL TO MAINTAIN 1 HR FIRE RATING AT MINIMUM. PAINT CAPPED OPENING TO MATCH EXTERIOR STONE.
4. INSTALL FIRE PROTECTION ABOVE NEW CEILING LID. AREA WILL NOT BE CONDITIONED. PROTECT WITH DRY SYSTEM, SLOPE PIPING BACK TO MAIN SO THERE ARE NOT LOW POINTS TO COLLECT WATER IN THE NON CONDITIONED AREA.
5. TIE CONDENSATE INTO EXISTING GUTTER DOWNSPOUT.
6. ROUTE REFRIGERANT LINE SETS ALONG EXTERIOR APPROXIMATELY 18" ABOVE GRADE. PROVIDE 1/2" ARMAFLEX CLOSED CELL INSULATION WITH ALUMINUM JACKET. PAINT ALUMINUM JACKET TO MATCH EXTERIOR STONE.
7. PROVIDE ALL NECESSARY UPGRADES AT NO ADDITIONAL COST TO THE OWNER AFTER BIDDING TO MAKE THE ELEVATOR AND ASSOCIATED EQUIPMENT COMPLIANT WITH THE ADOPTED NEBRASKA ELEVATOR CODES TO INCLUDE BUT NOT LIMITED TO ASME A17.1-2013.

SPLIT SYSTEM EXTERIOR CONDENSING UNIT AND INTERIOR FAN COILS																		
MARK (LOCATION)	SERIES	COOLING CAPACITY RANGE (BTU/H)	HP HEATING CAPACITY RANGE (BTU/H)	SEER	HSFP	ESP (n.w.g.)	CFM AT DRYCOOL AT FAN SPEED (L/M-H)	ENTERING AIR (DB/EWB)	AMBIENT AIR (DEG F)	ELECTRICAL CHARACTERISTICS (TO EACH COMPONENT)	REFRIGERANT TYPE	MANUFACTURER OR EQUIVALENT	HEATING CAPACITY @ 5F, HEATING CAPACITY @ -13 MBH	INTERIOR BLOWER COIL MODEL	OUTDOOR MODEL	OUTDOOR ELEC. MCA	OUTDOOR ELEC. MCOIP	REMARKS
FC-1 (INDOOR)	ELEVATOR LOBBY	17,200	21,600	-	-	0.5	275.339.420	80/67	95	298-65-1	R410A	MITSUBISHI	NA	MSZ-GE19NA-8	-	-	-	1.2,3.4,5.6,7.8,9,10
FC-2 (INDOOR)	ELEVATOR EQUIPMENT ROOM	14,000	18,000	-	-	0.5	272.335.420	80/67	95	298-65-1	R410A	MITSUBISHI	NA	MSZ-GE19NA-8	-	-	-	1.2,3.4,5.6,7.8,9,10
HP-1 (OUTDOOR)	(FC-1 & FC-2)	28,400	28,600	17	10.4	-	-	-	-	298-65-1	R410A	MITSUBISHI	28.6(100%), 82%	-	MKZ-3C30NAH2	30	40	1.2,3.4,5.6,7.8,9,10

REMARKS:

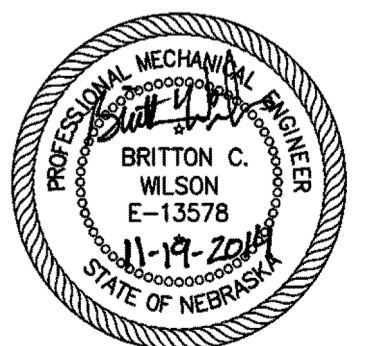
1. PROVIDE SINGLE POINT ELECTRICAL CONNECTION TO OUTDOOR UNIT THAT POWERS INDOOR UNITS
2. ELECTRICAL DISCONNECT TO BE PROVIDED BY DIVISION 26 CONTRACTOR AS WELL AS POWERING THE INDOOR UNITS FROM THE OUTDOOR UNIT.
3. PROVIDE R-410A REFRIGERANT CHARGE, THERMAL EXPANSION VALVE, FILTER DRYER, CRANKCASE HEATER, AND INTEGRAL HARD START KIT
4. PROVIDE ALL REQUIRED INSULATED REFRIGERANT LINES AND PIPING ACCESSORIES PER MANUFACTURER RECOMMENDATIONS
5. INSTALL AN ALUMINUM JACKET SHIELD ON EXTERIOR OF INSULATION AND PAINT TO MATCH EXTERIOR
6. PROVIDE STANDARD FIVE (5) YEAR WARRANTY ON ALL PARTS AND LABOR. PROVIDE A 1 YEAR WARRANTY ON COMPRESSOR
7. CONNECT THE TWO INDOOR FAN COIL UNITS TO A SINGLE EXTERIOR HEAT PUMP. PROVIDE NECESSARY ACCESSORIES WITH OUTDOOR AND INDOOR UNITS TO MAKE THIS INTEGRATION POSSIBLE
8. PROVIDE 100% HEATING CAPACITY DOWN TO 5F WITH REDUCED CAPACITY DOWN TO -13F AMBIENT
9. PROVIDE CONDENSER COIL GUARD IF AVAILABLE
10. PROVIDE INTEGRAL CONDENSATE PUMP ON INTERIOR FAN COILS AND ROUTE TO CONDENSATE PIPING
11. PROVIDE A WIRED WALL MOUNTED THERMOSTAT WITH LOCKABLE CLEAR PLASTIC COVER. MECHANICAL CONTRACTOR TO ROUTE POWER/CONTROL WIRING FROM INTERIOR UNITS TO EXTERIOR UNITS
12. MOUNT HP-1 ON FIELD FABRICATED ANGLE IRON WALL MOUNT APPARATUS, PAINTED TO MATCH EXTERIOR

Centenary United Methodist Church Fire Sprinkler / Fire Alarm Life Safety Improvements

608 Elk Street
Beatrice, Nebraska

TCEP No.: 828-003-14

November 19, 2014



Elevator Optimization Plans

M3.01