

Addendum No. 2

Project: St. Patrick Catholic Church
Interior Bid Package
6111 Morrill Avenue
Lincoln NE, 68507

Date Issued: November 17, 2014

Issued By: Brian Semerad, Project Manager
Kingery Construction Co.

Bid Date: November 20, 2014, 2:00 PM

Item 1: The bid date has been changed from November 18, 2014 at 2:00 PM to November 20, 2014 at 2:00 PM.

Item 2: Section 055000 – Metal Fabrications
Added section is attached.

Item 3: Section 055113 – Metal Pan Stairs
Added section is attached. This section has specifications for steel tube railings and guard rails associated with metal pan stairs.

Item 4: Section 055213 – Pipe and Tube Railings
Added section is attached.

Item 5: Refer to sheet A102 – Second Floor Plan. The steel platform, rails, and ships ladder going from Stair A02 to Tower A02A is **not** to be included in Bid Package #33.

Item 6: Refer to sheet A105 – North Entrance Floor Plans and Enlarged Floor Plans. Corridor 108 is to have handrails included at the interior walls. See attached ADD-1.0.

Item 7: Refer to sheet A311 – Tower Floor Plans and Section. Bid Package #33 is to include the two (2) steel ladders for the bell tower going from the second to third level and third to fourth level.

Item 8: Bid Package #29 Painting contractor shall assume that Owner installed millwork will be completed after painting is complete. Any touch up as a result of Owner installed millwork will be completed by the Owner.

- Item 9:** Bid Package #29 Painting contractor shall assume that the drywall ceiling in the Nave may be prime painted off scaffolding that is currently erected in the building. It shall be assumed that all finish painting will need to be completed off your own lifts.
- Item 10:** Bid package #28 Carpet & Resilient Flooring contractor shall include a \$2,500 allowance in their bid for floor preparation work. This work will be as directed by Kingery Construction Co.'s project superintendent.
- Item 11:** Bid Package #21 Building Joint Sealants contractor shall assume that caulking around the bell tower can be completed from scaffolding provided by others.

End of Addendum

SECTION 055000 - METAL FABRICATIONS

PART 1 - GENERAL

1.1 RELATED DOCUMENTS

- A. Drawings and general provisions of the Contract, including General and Supplementary Conditions and Division 01 Specification Sections, apply to this Section.

1.2 SUMMARY

A. Section Includes:

1. Metal ladders.
2. Metal bollards.
3. Loose bearing and leveling plates for applications where they are not specified in other Sections.

B. Products furnished, but not installed, under this Section include the following:

1. Loose steel lintels.
2. Anchor bolts, steel pipe sleeves, slotted-channel inserts, and wedge-type inserts indicated to be cast into concrete or built into unit masonry.
3. Steel weld plates and angles for casting into concrete for applications where they are not specified in other Sections.

C. Related Requirements:

1. Section 033000 "Cast-in-Place Concrete" for installing anchor bolts, steel pipe sleeves, slotted-channel inserts, wedge-type inserts, and other items cast into concrete.
2. Section 042000 "Unit Masonry" for installing loose lintels, anchor bolts, and other items built into unit masonry.
3. Section 051200 "Structural Steel Framing."

1.3 COORDINATION

- A. Coordinate selection of shop primers with topcoats to be applied over them. Comply with paint and coating manufacturers' written recommendations to ensure that shop primers and topcoats are compatible with one another.
- B. Coordinate installation of metal fabrications that are anchored to or that receive other work. Furnish setting drawings, templates, and directions for installing anchorages, including sleeves, concrete inserts, anchor bolts, and items with integral anchors, that are to be embedded in concrete or masonry. Deliver such items to Project site in time for installation.

1.4 ACTION SUBMITTALS

- A. Shop Drawings: Show fabrication and installation details. Include plans, elevations, sections, and details of metal fabrications and their connections. Show anchorage and accessory items. Provide Shop Drawings for the following:
 - 1. Steel framing and supports for applications where framing and supports are not specified in other Sections.
 - 2. Metal ladders.
 - 3. Metal bollards.
 - 4. Loose steel lintels.

1.5 INFORMATIONAL SUBMITTALS

- A. Welding certificates.

1.6 QUALITY ASSURANCE

- A. Welding Qualifications: Qualify procedures and personnel according to AWS D1.1/D1.1M, "Structural Welding Code - Steel."
- B. Welding Qualifications: Qualify procedures and personnel according to the following:
 - 1. AWS D1.1/D1.1M, "Structural Welding Code - Steel."

1.7 FIELD CONDITIONS

- A. Field Measurements: Verify actual locations of walls and other construction contiguous with metal fabrications by field measurements before fabrication.

PART 2 - PRODUCTS

2.1 PERFORMANCE REQUIREMENTS

- A. Thermal Movements: Allow for thermal movements from ambient and surface temperature changes acting on exterior metal fabrications by preventing buckling, opening of joints, overstressing of components, failure of connections, and other detrimental effects.
 - 1. Temperature Change: 120 deg F (67 deg C), ambient; 180 deg F (100 deg C), material surfaces.

2.2 METALS

- A. Metal Surfaces, General: Provide materials with smooth, flat surfaces unless otherwise indicated. For metal fabrications exposed to view in the completed Work, provide materials without seam marks, roller marks, rolled trade names, or blemishes.

- B. Recycled Content of Steel Products: Postconsumer recycled content plus one-half of preconsumer recycled content not less than 25 percent.
- C. Steel Plates, Shapes, and Bars: ASTM A 36/A 36M.
- D. Steel Tubing: ASTM A 500/A 500M, cold-formed steel tubing.
- E. Steel Pipe: ASTM A 53/A 53M, Standard Weight (Schedule 40) unless otherwise indicated.
- F. Slotted Channel Framing: Cold-formed metal box channels (struts) complying with MFMA-4.
 - 1. Size of Channels: 1-5/8 by 1-5/8 inches (41 by 41 mm).
 - 2. Material: Galvanized steel, ASTM A 653/A 653M, structural steel, Grade 33 (Grade 230), with G90 (Z275) coating; 0.079-inch (2-mm) nominal thickness.

2.3 FASTENERS

- A. General: Unless otherwise indicated, provide Type 304 stainless-steel fasteners for exterior use and zinc-plated fasteners with coating complying with ASTM B 633 or ASTM F 1941 (ASTM F 1941M), Class Fe/Zn 5, at exterior walls. Select fasteners for type, grade, and class required.
 - 1. Provide stainless-steel fasteners for fastening aluminum.
 - 2. Provide stainless-steel fasteners for fastening stainless steel.
- B. Steel Bolts and Nuts: Regular hexagon-head bolts, ASTM A 307, Grade A (ASTM F 568M, Property Class 4.6); with hex nuts, ASTM A 563 (ASTM A 563M); and, where indicated, flat washers.
- C. Stainless-Steel Bolts and Nuts: Regular hexagon-head annealed stainless-steel bolts, ASTM F 593 (ASTM F 738M); with hex nuts, ASTM F 594 (ASTM F 836M); and, where indicated, flat washers; Alloy Group 1 (A1).
- D. Anchor Bolts: ASTM F 1554, Grade 36, 55, and 105 of dimensions indicated; with nuts, ASTM A 563 (ASTM A 563M); and, where indicated, flat washers.
 - 1. Hot-dip galvanize or provide mechanically deposited, zinc coating where item being fastened is indicated to be galvanized.
- E. Cast-in-Place Anchors in Concrete: Either threaded type or wedge type unless otherwise indicated; galvanized ferrous castings, either ASTM A 47/A 47M malleable iron or ASTM A 27/A 27M cast steel. Provide bolts, washers, and shims as needed, all hot-dip galvanized per ASTM F 2329.
- F. Post-Installed Anchors: See Structural Notes and Details

2.4 MISCELLANEOUS MATERIALS

- A. Universal Shop Primer: Fast-curing, lead- and chromate-free, universal modified-alkyd primer complying with MPI#79 and compatible with topcoat.

1. Use primer containing pigments that make it easily distinguishable from zinc-rich primer.
- B. Shop Primer for Galvanized Steel: Primer formulated for exterior use over zinc-coated metal and compatible with finish paint systems indicated.
- C. Galvanizing Repair Paint: High-zinc-dust-content paint complying with SSPC-Paint 20 and compatible with paints specified to be used over it.
- D. Bituminous Paint: Cold-applied asphalt emulsion complying with ASTM D 1187/D 1187M.
- E. Nonshrink, Nonmetallic Grout: Factory-packaged, nonstaining, noncorrosive, nongaseous grout complying with ASTM C 1107/C 1107M. Provide grout specifically recommended by manufacturer for interior and exterior applications.
- F. Concrete: Comply with requirements in Section 033000 "Cast-in-Place Concrete" for normal-weight, air-entrained, concrete with a minimum 28-day compressive strength of 3000 psi (20 MPa).

2.5 FABRICATION, GENERAL

- A. Shop Assembly: Preassemble items in the shop to greatest extent possible. Disassemble units only as necessary for shipping and handling limitations. Use connections that maintain structural value of joined pieces. Clearly mark units for reassembly and coordinated installation.
- B. Cut, drill, and punch metals cleanly and accurately. Remove burrs and ease edges to a radius of approximately 1/32 inch (1 mm) unless otherwise indicated. Remove sharp or rough areas on exposed surfaces.
- C. Form bent-metal corners to smallest radius possible without causing grain separation or otherwise impairing work.
- D. Form exposed work with accurate angles and surfaces and straight edges.
- E. Weld corners and seams continuously to comply with the following:
 1. Use materials and methods that minimize distortion and develop strength and corrosion resistance of base metals.
 2. Obtain fusion without undercut or overlap.
 3. Remove welding flux immediately.
 4. At exposed connections, finish exposed welds and surfaces smooth and blended so no roughness shows after finishing and contour of welded surface matches that of adjacent surface.
- F. Form exposed connections with hairline joints, flush and smooth, using concealed fasteners or welds where possible. Where exposed fasteners are required, use Phillips flat-head (countersunk) fasteners unless otherwise indicated. Locate joints where least conspicuous.
- G. Fabricate seams and other connections that are exposed to weather in a manner to exclude water. Provide weep holes where water may accumulate.

- H. Cut, reinforce, drill, and tap metal fabrications as indicated to receive finish hardware, screws, and similar items.
- I. Provide for anchorage of type indicated; coordinate with supporting structure. Space anchoring devices to secure metal fabrications rigidly in place and to support indicated loads.
- J. Where units are indicated to be cast into concrete or built into masonry, equip with integrally welded steel strap anchors, **1/8 by 1-1/2 inches (3.2 by 38 mm)**, with a minimum **6-inch (150-mm)** embedment and **2-inch (50-mm)** hook, not less than **8 inches (200 mm)** from ends and corners of units and **24 inches (600 mm)** o.c., unless otherwise indicated.

2.6 MISCELLANEOUS FRAMING AND SUPPORTS

- A. General: Provide steel framing and supports not specified in other Sections as needed to complete the Work.
- B. Fabricate units from steel shapes, plates, and bars of welded construction unless otherwise indicated. Fabricate to sizes, shapes, and profiles indicated and as necessary to receive adjacent construction.
 - 1. Fabricate units from slotted channel framing where indicated.
 - 2. Furnish inserts for units installed after concrete is placed.
- C. Galvanize miscellaneous framing and supports where indicated.
- D. Prime miscellaneous framing and supports with zinc-rich primer where indicated.

2.7 METAL LADDERS

- A. General:
 - 1. Comply with ANSI A14.3.
 - 2. For elevator pit ladders, comply with ASME A17.1/CSA B44.
- B. Steel Ladders:
 - 1. Space siderails **18 inches (457 mm)** apart unless otherwise indicated.
 - 2. Siderails: Continuous, **1/2-by-2-1/2-inch (12.7-by-64-mm)** steel flat bars, with eased edges.
 - 3. Rungs: **3/4-inch- (19-mm-)** diameter steel bars.
 - 4. Fit rungs in centerline of siderails; plug-weld and grind smooth on outer rail faces.
 - 5. Provide nonslip surfaces on top of each rung, either by coating rung with aluminum-oxide granules set in epoxy-resin adhesive or by using a type of manufactured rung filled with aluminum-oxide grout.
 - 6. Support each ladder at top and bottom and not more than **60 inches (1500 mm)** o.c. with welded or bolted steel brackets.
 - 7. Prime ladders, including brackets and fasteners, with zinc-rich primer.

2.8 METAL BOLLARDS

- A. Fabricate metal bollards from Schedule 40 steel pipe.
- B. Fabricate sleeves for bollard anchorage from steel pipe or tubing with **1/4-inch- (6.4-mm-)** thick steel plate welded to bottom of sleeve. Make sleeves not less than **8 inches (200 mm)** deep and **3/4 inch (19 mm)** larger than OD of bollard.
- C. Fabricate internal sleeves for removable bollards from Schedule 40 steel pipe or **1/4-inch (6.4-mm)** wall-thickness steel tubing with an OD approximately **1/16 inch (1.5 mm)** less than ID of bollards. Match drill sleeve and bollard for **3/4-inch (19-mm)** steel machine bolt.
- D. Prime bollards with zinc-rich primer.

2.9 LOOSE BEARING AND LEVELING PLATES

- A. Provide loose bearing and leveling plates for steel items bearing on masonry or concrete construction. Drill plates to receive anchor bolts and for grouting.
- B. Galvanize plates.
- C. Prime plates with zinc-rich primer.

2.10 LOOSE STEEL LINTELS

- A. Fabricate loose steel lintels from steel angles and shapes of size indicated for openings and recesses in masonry walls and partitions at locations indicated. Fabricate in single lengths for each opening unless otherwise indicated. Weld adjoining members together to form a single unit where indicated.
- B. Size loose lintels to provide bearing length at each side of openings equal to 1/12 of clear span, but not less than **8 inches (200 mm)** unless otherwise indicated.
- C. Galvanize and prime loose steel lintels located in exterior walls.

2.11 STEEL WELD PLATES AND ANGLES

- A. Provide steel weld plates and angles not specified in other Sections, for items supported from concrete construction as needed to complete the Work. Provide each unit with no fewer than two integrally welded steel strap anchors for embedding in concrete.

2.12 FINISHES, GENERAL

- A. Finish metal fabrications after assembly.
- B. Finish exposed surfaces to remove tool and die marks and stretch lines, and to blend into surrounding surface.

2.13 STEEL AND IRON FINISHES

- A. Galvanizing: Hot-dip galvanize items as indicated to comply with ASTM A 153/A 153M for steel and iron hardware and with ASTM A 123/A 123M for other steel and iron products.
 - 1. Do not quench or apply post galvanizing treatments that might interfere with paint adhesion.
- B. Preparation for Shop Priming Galvanized Items: After galvanizing, thoroughly clean railings of grease, dirt, oil, flux, and other foreign matter, and treat with metallic phosphate process.
- C. Shop prime iron and steel items unless they are to be embedded in concrete, or masonry, or unless otherwise indicated.
- D. Preparation for Shop Priming: Prepare surfaces to comply with requirements indicated below:
 - 1. Exterior Items: SSPC-SP 6/NACE No. 3, "Commercial Blast Cleaning."
 - 2. Items Indicated to Receive Zinc-Rich Primer: SSPC-SP 6/NACE No. 3, "Commercial Blast Cleaning."
 - 3. Other Items: SSPC-SP 3, "Power Tool Cleaning."
- E. Shop Priming: Apply shop primer to comply with SSPC-PA 1, "Paint Application Specification No. 1: Shop, Field, and Maintenance Painting of Steel," for shop painting.
 - 1. Stripe paint corners, crevices, bolts, welds, and sharp edges.

PART 3 - EXECUTION

3.1 INSTALLATION, GENERAL

- A. Cutting, Fitting, and Placement: Perform cutting, drilling, and fitting required for installing metal fabrications. Set metal fabrications accurately in location, alignment, and elevation; with edges and surfaces level, plumb, true, and free of rack; and measured from established lines and levels.
- B. Fit exposed connections accurately together to form hairline joints. Weld connections that are not to be left as exposed joints but cannot be shop welded because of shipping size limitations. Do not weld, cut, or abrade surfaces of exterior units that have been hot-dip galvanized after fabrication and are for bolted or screwed field connections.
- C. Field Welding: Comply with the following requirements:
 - 1. Use materials and methods that minimize distortion and develop strength and corrosion resistance of base metals.
 - 2. Obtain fusion without undercut or overlap.
 - 3. Remove welding flux immediately.
 - 4. At exposed connections, finish exposed welds and surfaces smooth and blended so no roughness shows after finishing and contour of welded surface matches that of adjacent surface.

- D. Fastening to In-Place Construction: Provide anchorage devices and fasteners where metal fabrications are required to be fastened to in-place construction. Provide threaded fasteners for use with concrete and masonry inserts, toggle bolts, through bolts, lag screws, wood screws, and other connectors.
- E. Provide temporary bracing or anchors in formwork for items that are to be built into concrete, masonry, or similar construction.

3.2 INSTALLING METAL BOLLARDS

- A. Anchor bollards in concrete with pipe sleeves preset and anchored into concrete. Fill annular space around bollard solidly with nonshrink grout; mixed and placed to comply with grout manufacturer's written instructions. Slope grout up approximately **1/8 inch (3 mm)** toward bollard.
- B. Fill bollards solidly with concrete, mounding top surface to shed water.

3.3 INSTALLING BEARING AND LEVELING PLATES

- A. Clean concrete and masonry bearing surfaces of bond-reducing materials, and roughen to improve bond to surfaces. Clean bottom surface of plates.
- B. Set bearing and leveling plates on wedges, shims, or leveling nuts. After bearing members have been positioned and plumbed, tighten anchor bolts. Do not remove wedges or shims but, if protruding, cut off flush with edge of bearing plate before packing with nonshrink grout. Pack grout solidly between bearing surfaces and plates to ensure that no voids remain.

3.4 ADJUSTING AND CLEANING

- A. Touchup Painting: Immediately after erection, clean field welds, bolted connections, and abraded areas. Paint uncoated and abraded areas with the same material as used for shop painting to comply with SSPC-PA 1 for touching up shop-painted surfaces.
 - 1. Apply by brush or spray to provide a minimum **2.0-mil (0.05-mm)** dry film thickness.
- B. Galvanized Surfaces: Clean field welds, bolted connections, and abraded areas and repair galvanizing to comply with ASTM A 780/A 780M.

END OF SECTION 055000

SECTION 055113 - METAL PAN STAIRS

PART 1 - GENERAL

1.1 RELATED DOCUMENTS

- A. Drawings and general provisions of the Contract, including General and Supplementary Conditions and Division 01 Specification Sections, apply to this Section.

1.2 SUMMARY

- A. Section Includes:

- 1. Preassembled steel stairs with concrete-filled treads.

- B. Related Requirements:

- 1. Section 033000 "Cast-in-Place Concrete" for concrete fill for stair treads and platforms.
 - 2. Section 055213 "Pipe and Tube Railings" for pipe and tube railings.

1.3 COORDINATION

- A. Coordinate selection of shop primers with topcoats to be applied over them. Comply with paint and coating manufacturers' written recommendations to ensure that shop primers and topcoats are compatible with one another.
- B. Coordinate installation of anchorages for metal stairs. Furnish setting drawings, templates, and directions for installing anchorages, including sleeves, concrete inserts, anchor bolts, and items with integral anchors, that are to be embedded in concrete or masonry. Deliver such items to Project site in time for installation.

1.4 ACTION SUBMITTALS

- A. Shop Drawings: Include plans, elevations, sections, details, and attachments to other work.

1.5 INFORMATIONAL SUBMITTALS

- A. Welding certificates.
- B. Paint Compatibility Certificates: From manufacturers of topcoats applied over shop primers certifying that shop primers are compatible with topcoats.

1.6 QUALITY ASSURANCE

- A. Installer Qualifications: Fabricator of products.
- B. Welding Qualifications: Qualify procedures and personnel according to the following:
 - 1. AWS D1.1/D1.1M, "Structural Welding Code - Steel."
 - 2. AWS D1.3/D1.3M, "Structural Welding Code - Sheet Steel."

PART 2 - PRODUCTS

2.1 PERFORMANCE REQUIREMENTS

- A. Structural Performance of Stairs: Metal stairs shall withstand the effects of gravity loads and the following loads and stresses within limits and under conditions indicated:
 - 1. Uniform Load: 100 lbf/sq. ft. (4.79 kN/sq. m).
 - 2. Concentrated Load: 300 lbf (1.33 kN) applied on an area of 4 sq. in. (2580 sq. mm).
 - 3. Uniform and concentrated loads need not be assumed to act concurrently.
 - 4. Stair Framing: Capable of withstanding stresses resulting from railing loads in addition to loads specified above.
 - 5. Limit deflection of treads, platforms, and framing members to L/360 or 1/4 inch (6.4 mm), whichever is less.
- B. Structural Performance of Railings: Railings shall withstand the effects of gravity loads and the following loads and stresses within limits and under conditions indicated:
 - 1. Handrails and Top Rails of Guards:
 - a. Uniform load of 50 lbf/ft. (0.73 kN/m) applied in any direction.
 - b. Concentrated load of 200 lbf (0.89 kN) applied in any direction.
 - c. Uniform and concentrated loads need not be assumed to act concurrently.
 - 2. Infill of Guards:
 - a. Concentrated load of 50 lbf (0.22 kN) applied horizontally on an area of 1 sq. ft. (0.093 sq. m).
 - b. Infill load and other loads need not be assumed to act concurrently.

2.2 METALS

- A. Metal Surfaces, General: Provide materials with smooth, flat surfaces unless otherwise indicated. For components exposed to view in the completed Work, provide materials without seam marks, roller marks, rolled trade names, or blemishes.
- B. Steel Plates, Shapes, and Bars: ASTM A 36/A 36M.
- C. Steel Tubing: ASTM A 500 (cold formed) or ASTM A 513.

- D. Uncoated, Cold-Rolled Steel Sheet: ASTM A 1008/A 1008M, either commercial steel, Type B, or structural steel, **Grade 25 (Grade 170)**, unless another grade is required by design loads; exposed.
- E. Uncoated, Hot-Rolled Steel Sheet: ASTM A 1011/A 1011M, either commercial steel, Type B, or structural steel, **Grade 30 (Grade 205)**, unless another grade is required by design loads.

2.3 FASTENERS

- A. General: Provide zinc-plated fasteners with coating complying with ASTM B 633 or **ASTM F 1941 (ASTM F 1941M)**, Class Fe/Zn 12 for exterior use, and Class Fe/Zn 5 where built into exterior walls. Select fasteners for type, grade, and class required.
- B. Bolts and Nuts: Regular hexagon-head bolts, **ASTM A 307, Grade A (ASTM F 568M, Property Class 4.6)**; with hex nuts, **ASTM A 563 (ASTM A 563M)**; and, where indicated, flat washers.
- C. Anchor Bolts: ASTM F 1554, Grade 36, of dimensions indicated; with nuts, **ASTM A 563 (ASTM A 563M)**; and, where indicated, flat washers.
 - 1. Provide mechanically deposited or hot-dip, zinc-coated anchor bolts for exterior stairs.
- D. Post-Installed Anchors: Torque-controlled expansion anchors or chemical anchors capable of sustaining, without failure, a load equal to six times the load imposed when installed in unit masonry and four times the load imposed when installed in concrete, as determined by testing according to ASTM E 488/E 488M, conducted by a qualified independent testing agency.
 - 1. Material for Interior Locations: Carbon-steel components zinc plated to comply with ASTM B 633 or **ASTM F 1941 (ASTM F 1941M)**, Class Fe/Zn 5, unless otherwise indicated.
 - 2. Material for Exterior Locations and Where Stainless Steel Is Indicated: Alloy Group **1 (A1)** stainless-steel bolts, **ASTM F 593 (ASTM F 738M)**, and nuts, **ASTM F 594 (ASTM F 836M)**.

2.4 MISCELLANEOUS MATERIALS

- A. Universal Shop Primer: Fast-curing, lead- and chromate-free, universal modified-alkyd primer complying with MPI#79 and compatible with topcoat.
 - 1. Use primer containing pigments that make it easily distinguishable from zinc-rich primer.
- B. Shop Primer for Galvanized Steel: Primer formulated for exterior use over zinc-coated metal and compatible with finish paint systems indicated.
- C. Galvanizing Repair Paint: High-zinc-dust-content paint complying with SSPC-Paint 20 and compatible with paints specified to be used over it.
- D. Bituminous Paint: Cold-applied asphalt emulsion complying with ASTM D 1187/D 1187M.

- E. Concrete Materials and Properties: Comply with requirements in Section 033000 "Cast-in-Place Concrete" for normal-weight, air-entrained, ready-mix concrete with a minimum 28-day compressive strength of 3000 psi (20 MPa) unless otherwise indicated.
- F. Welded Wire Reinforcement: ASTM A 185/A 185M, 6 by 6 inches (152 by 152 mm), W1.4 by W1.4, unless otherwise indicated.

2.5 FABRICATION, GENERAL

- A. Provide complete stair assemblies, including metal framing, hangers, struts, railings, clips, brackets, bearing plates, and other components necessary to support and anchor stairs and platforms on supporting structure.
 - 1. Join components by welding unless otherwise indicated.
 - 2. Use connections that maintain structural value of joined pieces.
- B. Preassembled Stairs: Assemble stairs in shop to greatest extent possible. Disassemble units only as necessary for shipping and handling limitations. Clearly mark units for reassembly and coordinated installation.
- C. Cut, drill, and punch metals cleanly and accurately. Remove burrs and ease edges to a radius of approximately 1/32 inch (1 mm) unless otherwise indicated. Remove sharp or rough areas on exposed surfaces.
- D. Form bent-metal corners to smallest radius possible without causing grain separation or otherwise impairing work.
- E. Form exposed work with accurate angles and surfaces and straight edges.
- F. Weld connections to comply with the following:
 - 1. Use materials and methods that minimize distortion and develop strength and corrosion resistance of base metals.
 - 2. Obtain fusion without undercut or overlap.
 - 3. Remove welding flux immediately.
 - 4. Weld exposed corners and seams continuously unless otherwise indicated.
 - 5. At exposed connections, finish exposed welds to comply with NOMMA's "Voluntary Joint Finish Standards" for Type 3 welds: partially dressed weld with spatter removed.
- G. Form exposed connections with hairline joints, flush and smooth, using concealed fasteners where possible. Where exposed fasteners are required, use Phillips flat-head (countersunk) screws or bolts unless otherwise indicated. Locate joints where least conspicuous.

2.6 STEEL-FRAMED STAIRS

- A. NAAMM Stair Standard: Comply with "Recommended Voluntary Minimum Standards for Fixed Metal Stairs" in NAAMM AMP 510, "Metal Stairs Manual," Commercial Class, unless more stringent requirements are indicated.
- B. Stair Framing:

1. Fabricate stringers of steel tubes.
 - a. Provide closures for exposed ends of tube stringers.
 2. Construct platforms of steel channel headers and miscellaneous framing members as indicated.
 3. Weld stringers to headers; weld framing members to stringers and headers.
- C. Metal Pan Stairs: Form risers, subtread pans, and subplatforms to configurations shown from steel sheet of thickness needed to comply with performance requirements, but not less than **0.067 inch (1.7 mm)**.
1. Steel Sheet: Uncoated hot-rolled steel sheet.
 2. Directly weld metal pans to stringers; locate welds on top of subtreads where they are concealed by concrete fill. Do not weld risers to stringers.
 3. Shape metal pans to include nosing integral with riser.
 4. Provide subplatforms of configuration indicated or, if not indicated, the same as subtreads. Weld subplatforms to platform framing.

2.7 STAIR RAILINGS

- A. Aluminum Tube Railings: Comply with applicable requirements in Section 055213 "Pipe and Tube Railings."
- B. Steel Tube Guard Railings: Fabricate guard railings to comply with requirements indicated for design, dimensions, details, finish, and member sizes, including wall thickness of tube, post spacings, and anchorage, but not less than that needed to withstand indicated loads.
1. Rails and Posts: **1-1/2-inch- (38-mm-)** square top and bottom rails and **1-1/2-inch- (38-mm-)** square posts.
 2. Picket Infill: **1/2-inch- (13-mm-)** square pickets spaced less than **4 inches (100 mm)** clear.
- C. Welded Connections: Fabricate railings with welded connections. Cope components at connections to provide close fit, or use fittings designed for this purpose. Weld all around at connections, including at fittings.
1. Finish welds to comply with NOMMA's "Voluntary Joint Finish Standards" for Type 1 welds: no evidence of a welded joint as shown in NAAMM AMP 521.
- D. Form changes in direction of railings as follows:
1. By bending.
- E. For changes in direction made by bending, use jigs to produce uniform curvature for each repetitive configuration required. Maintain cross section of member throughout entire bend without buckling, twisting, cracking, or otherwise deforming exposed surfaces of components.
- F. Close exposed ends of railing members with prefabricated end fittings.
- G. Provide wall returns at ends of wall-mounted handrails unless otherwise indicated. Close ends of returns unless clearance between end of rail and wall is **1/4 inch (6 mm)** or less.

- H. Connect posts to stair framing by direct welding unless otherwise indicated.
- I. Brackets, Flanges, Fittings, and Anchors: Provide wall brackets, end closures, flanges, miscellaneous fittings, and anchors for interconnecting components and for attaching to other work. Furnish inserts and other anchorage devices for connecting to concrete or masonry work.
 - 1. For galvanized railings, provide galvanized fittings, brackets, fasteners, sleeves, and other ferrous-metal components.
 - 2. For nongalvanized railings, provide nongalvanized ferrous-metal fittings, brackets, fasteners, and sleeves, except galvanize anchors embedded in exterior masonry and concrete construction.
 - 3. Provide type of bracket with predrilled hole for exposed bolt anchorage and that provides **1-1/2-inch (38-mm)** clearance from inside face of handrail to finished wall surface.
- J. Fillers: Provide fillers made from steel plate, or other suitably crush-resistant material, where needed to transfer wall bracket loads through wall finishes to structural supports. Size fillers to suit wall finish thicknesses and to produce adequate bearing area to prevent bracket rotation and overstressing of substrate.

2.8 FINISHES

- A. Finish metal stairs after assembly.
- B. Galvanizing: Hot-dip galvanize items as indicated to comply with ASTM A 153/A 153M for steel and iron hardware and with ASTM A 123/A 123M for other steel and iron products.
 - 1. Do not quench or apply post galvanizing treatments that might interfere with paint adhesion.
 - 2. Fill vent and drain holes that are exposed in the finished Work, unless indicated to remain as weep holes, by plugging with zinc solder and filing off smooth.
- C. Preparation for Shop Priming: Prepare uncoated ferrous-metal surfaces to comply with SSPC-SP 3, "Power Tool Cleaning."
- D. Apply shop primer to uncoated surfaces of metal stair components, except those with galvanized finishes and those to be embedded in concrete or masonry unless otherwise indicated. Comply with SSPC-PA 1, "Paint Application Specification No. 1: Shop, Field, and Maintenance Painting of Steel," for shop painting.

PART 3 - EXECUTION

3.1 INSTALLING METAL PAN STAIRS

- A. Fastening to In-Place Construction: Provide anchorage devices and fasteners where necessary for securing metal stairs to in-place construction. Include threaded fasteners for concrete and masonry inserts, through-bolts, lag bolts, and other connectors.

- B. Cutting, Fitting, and Placement: Perform cutting, drilling, and fitting required for installing metal stairs. Set units accurately in location, alignment, and elevation, measured from established lines and levels and free of rack.
- C. Install metal stairs by welding stair framing to steel structure or to weld plates cast into concrete unless otherwise indicated.
- D. Provide temporary bracing or anchors in formwork for items that are to be built into concrete, masonry, or similar construction.
- E. Fit exposed connections accurately together to form hairline joints. Weld connections that are not to be left as exposed joints but cannot be shop welded because of shipping size limitations. Do not weld, cut, or abrade surfaces of exterior units that have been hot-dip galvanized after fabrication and are for bolted or screwed field connections.
- F. Field Welding: Comply with requirements for welding in "Fabrication, General" Article.
- G. Place and finish concrete fill for treads and platforms to comply with Section 033000 "Cast-in-Place Concrete."
 - 1. Install abrasive nosings with anchors fully embedded in concrete. Center nosings on tread width.
- H. Install precast concrete treads with adhesive supplied by manufacturer.

3.2 INSTALLING RAILINGS

- A. Adjust railing systems before anchoring to ensure matching alignment at abutting joints. Space posts at spacing indicated or, if not indicated, as required by design loads. Plumb posts in each direction. Secure posts and rail ends to building construction as follows:
 - 1. Anchor posts to steel by welding to steel supporting members.
 - 2. Anchor handrail ends to concrete and masonry with steel round flanges welded to rail ends and anchored with postinstalled anchors and bolts.
- B. Attach handrails to wall with wall brackets. Locate brackets as indicated or, if not indicated, at spacing required to support structural loads. Secure wall brackets to building construction as follows:
 - 1. For concrete and solid masonry anchorage, use drilled-in expansion shields and hanger or lag bolts.
 - 2. For hollow masonry anchorage, use toggle bolts.
 - 3. For steel-framed partitions, use hanger or lag bolts set into fire-retardant-treated wood backing between studs. Coordinate with stud installation to locate backing members.

3.3 ADJUSTING AND CLEANING

- A. Touchup Painting: Immediately after erection, clean field welds, bolted connections, and abraded areas of shop paint, and paint exposed areas with same material as used for shop painting to comply with SSPC-PA 1 for touching up shop-painted surfaces.

1. Apply by brush or spray to provide a minimum **2.0-mil (0.05-mm)** dry film thickness.
- B. Galvanized Surfaces: Clean field welds, bolted connections, and abraded areas and repair galvanizing to comply with ASTM A 780/A 780M.

END OF SECTION 055113

SECTION 055213 - PIPE AND TUBE RAILINGS

PART 1 - GENERAL

1.1 RELATED DOCUMENTS

- A. Drawings and general provisions of the Contract, including General and Supplementary Conditions and Division 01 Specification Sections, apply to this Section.

1.2 SUMMARY

A. Section Includes:

- 1. Aluminum tube railings.
- 2. Railing gates at the level of exit discharge.

B. Related Requirements:

- 1. Section 055112 "Metal Pan Stairs" for steel tube railings, guardrails and guardrails associated with metal pan stairs.

1.3 COORDINATION

- A. Coordinate selection of shop primers with topcoats to be applied over them. Comply with paint and coating manufacturers' written recommendations to ensure that shop primers and topcoats are compatible with one another.
- B. Coordinate installation of anchorages for railings. Furnish setting drawings, templates, and directions for installing anchorages, including sleeves, concrete inserts, anchor bolts, and items with integral anchors, that are to be embedded in concrete or masonry. Deliver such items to Project site in time for installation.
- C. Schedule installation so wall attachments are made only to completed walls. Do not support railings temporarily by any means that do not satisfy structural performance requirements.

1.4 ACTION SUBMITTALS

A. Product Data: For the following:

- 1. Manufacturer's product lines of mechanically connected railings.
- 2. Railing brackets.
- 3. Grout, anchoring cement, and paint products.

B. Shop Drawings: Include plans, elevations, sections, details, and attachments to other work.

C. Samples: For each type of exposed finish required.

1. Sections of each distinctly different linear railing member.
2. Fittings and brackets.
 - a. Show method of connecting and finishing members at intersections.

1.5 INFORMATIONAL SUBMITTALS

- A. Welding certificates.
- B. Product Test Reports: For pipe and tube railings, for tests performed by a qualified testing agency, according to ASTM E 894 and ASTM E 935.
- C. Evaluation Reports: For post-installed anchors , from ICC-ES.

1.6 QUALITY ASSURANCE

- A. Welding Qualifications: Qualify procedures and personnel according to the following:
 1. AWS D1.1/D1.1M, "Structural Welding Code - Steel."
 2. AWS D1.2/D1.2M, "Structural Welding Code - Aluminum."

1.7 DELIVERY, STORAGE, AND HANDLING

- A. Protect mechanical finishes on exposed surfaces from damage by applying a strippable, temporary protective covering before shipping.

1.8 FIELD CONDITIONS

- A. Field Measurements: Verify actual locations of walls and other construction contiguous with metal fabrications by field measurements before fabrication.

PART 2 - PRODUCTS

2.1 MANUFACTURERS

- A. Aluminum Pipe and Tube Railings:
 1. Manufacturers: Subject to compliance with requirements, provide products by one of the following:
 - a. **ATR Technologies, Inc.**
 - b. **Blum, Julius & Co., Inc.**
 - c. **Braun, J. G., Company.**
 - d. **CraneVeyor Corp.**
 - e. **Hollaender Manufacturing Company.**
 - f. **Kee Industrial Products, Inc.**

- g. Moultrie Manufacturing Company.
- h. Sterling Dula Architectural Products, Inc; Div. of Kane Manufacturing..
- i. Superior Aluminum Products, Inc.
- j. Thompson Fabricating, LLC.
- k. Tri Tech, Inc.
- l. Tubular Specialties Manufacturing, Inc.
- m. Tuttle Railing Systems.
- n. Wagner, R & B, Inc.

B. Stainless-Steel Pipe and Tube Swing Gates:

1. **Basis-of-Design Product:** Subject to compliance with requirements, provide SG-100 Series Swing Gate by Hayward Turnstiles Inc. www.haywardturnstiles.com or comparable product by one of the following:
 - a. Blum, Julius & Co., Inc.
 - b. Paragon Aquatics.
 - c. Stainless Fabricators, Inc.
 - d. Sterling Dula Architectural Products, Inc; Div. of Kane Manufacturing..
 - e. Tri Tech, Inc.
 - f. Tubular Specialties Manufacturing, Inc.
 - g. Tuttle Railing Systems.
 - h. Wagner, R & B, Inc.
2. Gates: Form gates from stainless steel tube of 2 inch (50 mm) diameter. Provide with cam-type, self-closing hinges connected to post mount with overlapping stop with rubber bumper to prevent gate from opening in direction opposite egress. Provide gate with 40 inch (1000 mm) clear passage.
 - a. Gates are to be held open with a magnetic hold open connected to fire alarm system. Upon alarm the magnet will release to allow the gate to close.

C. Source Limitations: Obtain each type of railing from single source from single manufacturer.

2.2 PERFORMANCE REQUIREMENTS

- A. Structural Performance: Railings, including attachment to building construction, shall withstand the effects of gravity loads and the following loads and stresses within limits and under conditions indicated:
1. Handrails:
 - a. Uniform load of **50 lbf/ ft. (0.73 kN/m)** applied in any direction.
 - b. Concentrated load of **200 lbf (0.89 kN)** applied in any direction.
 - c. Uniform and concentrated loads need not be assumed to act concurrently.
 - B. Thermal Movements: Allow for thermal movements from ambient and surface temperature changes.

1. Temperature Change: 120 deg F (67 deg C), ambient; 180 deg F (100 deg C, material surfaces).

2.3 METALS, GENERAL

- A. Metal Surfaces, General: Provide materials with smooth surfaces, without seam marks, roller marks, rolled trade names, stains, discolorations, or blemishes.
- B. Brackets, Flanges, and Anchors: Cast or formed metal of same type of material and finish as supported rails unless otherwise indicated.
 1. Provide type of bracket with predrilled hole for exposed bolt anchorage and that provides 1-1/2-inch (38-mm) clearance from inside face of handrail to finished wall surface.

2.4 ALUMINUM

- A. Aluminum, General: Provide alloy and temper recommended by aluminum producer and finisher for type of use and finish indicated, and with not less than the strength and durability properties of alloy and temper designated below for each aluminum form required.
- B. Extruded Structural Pipe and Round Tubing: ASTM B 429/B 429M, Alloy 6063-T6.
 1. Tubing outside diameter to be 1.66 inches (41.5 mm) with wall thickness of .140 inches (3.5 mm) minimum.
- C. Plate and Sheet: ASTM B 209 (ASTM B 209M), Alloy 6061-T6.
- D. Die and Hand Forgings: ASTM B 247 (ASTM B 247M), Alloy 6061-T6.
- E. Castings: ASTM B 26/B 26M, Alloy A356.0-T6.

2.5 STAINLESS STEEL

- A. Tubing: ASTM A 554, Grade MT 304.
- B. Pipe: ASTM A 312/A 312M, Grade TP 304.
- C. Castings: ASTM A 743/A 743M, Grade CF 8 or CF 20.
- D. Plate and Sheet: ASTM A 240/A 240M or ASTM A 666, Type 304.

2.6 FASTENERS

- A. General: Provide the following:
 1. Ungalvanized-Steel Railings: Plated steel fasteners complying with ASTM B 633 or ASTM F 1941 (ASTM F 1941M), Class Fe/Zn 5 for zinc coating.
 2. Aluminum Railings: Type 304 stainless-steel fasteners.

3. Provide exposed fasteners with finish matching appearance, including color and texture, of railings.
- B. Fasteners for Anchoring Railings to Other Construction: Select fasteners of type, grade, and class required to produce connections suitable for anchoring railings to other types of construction indicated and capable of withstanding design loads.
- C. Fasteners for Interconnecting Railing Components:
1. Provide concealed fasteners for interconnecting railing components and for attaching them to other work, unless otherwise indicated.
 2. Provide Phillips flat-head machine screws for exposed fasteners unless otherwise indicated.
- D. Post-Installed Anchors: Torque-controlled expansion anchors or chemical anchors capable of sustaining, without failure, a load equal to 6 times the load imposed when installed in unit masonry and 4 times the load imposed when installed in concrete, as determined by testing according to ASTM E 488/E 488M, conducted by a qualified independent testing agency.
1. Material for Interior Locations: Carbon-steel components zinc-plated to comply with ASTM B 633 or **ASTM F 1941 (ASTM F 1941M)**, Class Fe/Zn 5, unless otherwise indicated.
 2. Material for Exterior Locations and Where Stainless Steel Is Indicated: Alloy Group **1 (A1)** stainless-steel bolts, **ASTM F 593 (ASTM F 738M)**, and nuts, **ASTM F 594 (ASTM F 836M)**.

2.7 MISCELLANEOUS MATERIALS

- A. Welding Rods and Bare Electrodes: Select according to AWS specifications for metal alloy welded.
1. For aluminum railings, provide type and alloy as recommended by producer of metal to be welded and as required for color match, strength, and compatibility in fabricated items.
- B. Bituminous Paint: Cold-applied asphalt emulsion complying with ASTM D 1187/D 1187M.

2.8 FABRICATION

- A. General: Fabricate railings to comply with requirements indicated for design, dimensions, member sizes and spacing, details, finish, and anchorage, but not less than that required to support structural loads.
- B. Shop assemble railings to greatest extent possible to minimize field splicing and assembly. Disassemble units only as necessary for shipping and handling limitations. Clearly mark units for reassembly and coordinated installation. Use connections that maintain structural value of joined pieces.

- C. Cut, drill, and punch metals cleanly and accurately. Remove burrs and ease edges to a radius of approximately **1/32 inch (1 mm)** unless otherwise indicated. Remove sharp or rough areas on exposed surfaces.
- D. Form work true to line and level with accurate angles and surfaces.
- E. Fabricate connections that are exposed to weather in a manner that excludes water. Provide weep holes where water may accumulate.
- F. Cut, reinforce, drill, and tap as indicated to receive finish hardware, screws, and similar items.
- G. Connections: Fabricate railings with nonwelded connections unless otherwise indicated.
- H. Nonwelded Connections: Connect members with concealed mechanical fasteners and fittings. Fabricate members and fittings to produce flush, smooth, rigid, hairline joints.
 - 1. Fabricate splice joints for field connection using an epoxy structural adhesive if this is manufacturer's standard splicing method.
- I. Form Changes in Direction as Follows:
 - 1. As detailed.
 - 2. By bending or by inserting prefabricated elbow fittings.
- J. For changes in direction made by bending, use jigs to produce uniform curvature for each repetitive configuration required. Maintain cross section of member throughout entire bend without buckling, twisting, cracking, or otherwise deforming exposed surfaces of components.
- K. Close exposed ends of railing members with prefabricated end fittings.
- L. Provide wall returns at ends of wall-mounted handrails unless otherwise indicated. Close ends of returns unless clearance between end of rail and wall is **1/4 inch (6 mm)** or less.
- M. Brackets, Flanges, Fittings, and Anchors: Provide wall brackets, flanges, miscellaneous fittings, and anchors to interconnect railing members to other work unless otherwise indicated.
 - 1. At brackets and fittings fastened to plaster or gypsum board partitions, provide crush-resistant fillers or other means to transfer loads through wall finishes to structural supports and prevent bracket or fitting rotation and crushing of substrate.
- N. Provide inserts and other anchorage devices for connecting railings to concrete or masonry work. Fabricate anchorage devices capable of withstanding loads imposed by railings. Coordinate anchorage devices with supporting structure.

2.9 ALUMINUM FINISHES

- A. Appearance of Finished Work: Variations in appearance of abutting or adjacent pieces are acceptable if they are within one-half of the range of approved Samples. Noticeable variations in the same piece are unacceptable. Variations in appearance of other components are acceptable if they are within the range of approved Samples and are assembled or installed to minimize contrast.

- B. Clear Anodic Finish: AAMA 611, AA-M12C22A31.

2.10 STAINLESS-STEEL FINISHES

- A. Remove tool and die marks and stretch lines, or blend into finish.
- B. Grind and polish surfaces to produce uniform, directionally textured, polished finish indicated, free of cross scratches. Run grain with long dimension of each piece.
- C. Directional Satin Finish: No. 4.
- D. When polishing is completed, passivate and rinse surfaces. Remove embedded foreign matter and leave surfaces chemically clean.

PART 3 - EXECUTION

3.1 EXAMINATION

- A. Examine plaster and gypsum board assemblies, where reinforced to receive anchors, to verify that locations of concealed reinforcements are clearly marked for Installer. Locate reinforcements and mark locations if not already done.

3.2 INSTALLATION, GENERAL

- A. Fit exposed connections together to form tight, hairline joints.
- B. Perform cutting, drilling, and fitting required for installing railings. Set railings accurately in location, alignment, and elevation; measured from established lines and levels and free of rack.
 - 1. Do not weld, cut, or abrade surfaces of railing components that are coated or finished after fabrication and that are intended for field connection by mechanical or other means without further cutting or fitting.
 - 2. Set posts plumb within a tolerance of **1/16 inch in 3 feet (2 mm in 1 m)**.
 - 3. Align rails so variations from level for horizontal members and variations from parallel with rake of steps and ramps for sloping members do not exceed **1/4 inch in 12 feet (6 mm in 3.5 m)**.
- C. Control of Corrosion: Prevent galvanic action and other forms of corrosion by insulating metals and other materials from direct contact with incompatible materials.
 - 1. Coat, with a heavy coat of bituminous paint, concealed surfaces of aluminum that are in contact with grout, concrete, masonry, wood, or dissimilar metals.
- D. Adjust railings before anchoring to ensure matching alignment at abutting joints.
- E. Fastening to In-Place Construction: Use anchorage devices and fasteners where necessary for securing railings and for properly transferring loads to in-place construction.

3.3 RAILING CONNECTIONS

- A. Nonwelded Connections: Use mechanical or adhesive joints for permanently connecting railing components. Seal recessed holes of exposed locking screws using plastic cement filler colored to match finish of railings.
- B. Expansion Joints: Install expansion joints at locations indicated but not farther apart than required to accommodate thermal movement. Provide slip-joint internal sleeve extending **2 inches (50 mm)** beyond joint on either side, fasten internal sleeve securely to one side, and locate joint within **6 inches (150 mm)** of post.

3.4 ATTACHING RAILINGS

- A. Anchor railing ends at walls with round flanges anchored to wall construction and connected to railing ends using nonwelded connections.
- B. Anchor railing ends to metal surfaces with flanges bolted to metal surfaces and connected to railing ends using nonwelded connections.
- C. Attach railings to wall with wall brackets, except where end flanges are used. Locate brackets as indicated or, if not indicated, at spacing required to support structural loads.
- D. Secure wall brackets and railing end flanges to building construction as follows:
 - 1. For concrete and solid masonry anchorage, use drilled-in expansion shields and hanger or lag bolts.
 - 2. For hollow masonry anchorage, use toggle bolts.
 - 3. For wood stud partitions, use hanger or lag bolts set into studs or wood backing between studs. Coordinate with carpentry work to locate backing members.
 - 4. For steel-framed partitions, use hanger or lag bolts set into fire-retardant-treated wood backing between studs. Coordinate with stud installation to locate backing members.

3.5 ADJUSTING AND CLEANING

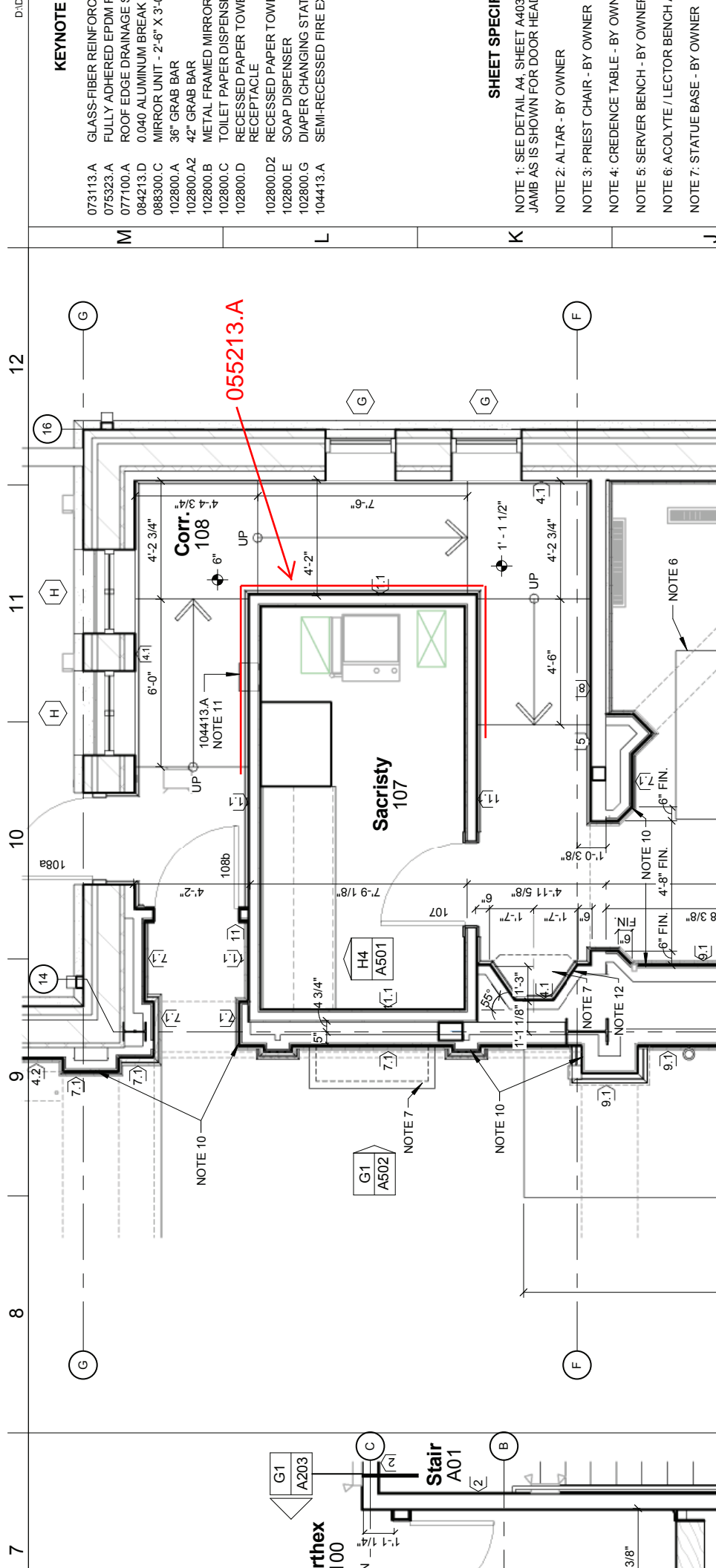
- A. Clean aluminum and stainless steel by washing thoroughly with clean water and soap and rinsing with clean water.

3.6 PROTECTION

- A. Protect finishes of railings from damage during construction period with temporary protective coverings approved by railing manufacturer. Remove protective coverings at time of Substantial Completion.

END OF SECTION 055213

Addendum 02 - Int. Package
 11-17-14
 ADD-1.0



KEYNOTE

073113.A	GLASS-FIBER REINFORC
075323.A	FULLY ADHERED EPDM F
077100.A	ROOF EDGE DRAINAGE
084213.D	0.040 ALUMINUM BREAK
088300.C	MIRROR UNIT - 2'-6" X 3'-4"
102800.A	36" GRAB BAR
102800.A2	42" GRAB BAR
102800.B	METAL FRAMED MIRROR
102800.C	TOILET PAPER DISPENSER
102800.D	RECESSED PAPER TOWEL RECEPTACLE
102800.D2	RECESSED PAPER TOWEL RECEPTACLE
102800.E	SOAP DISPENSER
102800.G	DIAPER CHANGING STATION
104413.A	SEMI-RECESSED FIRE EXTINGUISHER

SHEET SPECIFIC

NOTE 1: SEE DETAIL A4, SHEET A403 FOR DOOR HEAD JAMB AS IS SHOWN FOR DOOR HEAD

NOTE 2: ALTAR - BY OWNER

NOTE 3: PRIEST CHAIR - BY OWNER

NOTE 4: CRENDENCE TABLE - BY OWNER

NOTE 5: SERVER BENCH - BY OWNER

NOTE 6: ACOLYTE / LECTOR BENCH - BY OWNER

NOTE 7: STATUE BASE - BY OWNER