

Sampson Construction Co., Inc.
3730 South 14th Street
Lincoln, NE 68502
Phone: (402) 434-5450
FAX: (402) 434-5466

Bid Bulletin #02

PROJECT: Skinner Early Childhood Center
Bid Package #2
Omaha, NE

DATE: September 11, 2014

This Bid Bulletin includes item 1-1. Each item shall be fully incorporated into the Bidding/Contract Documents and have the same force and effect as though originally included. Bidders shall acknowledge receipt of this Bid Bulletin on their bid.

Item 1-1 Attached is sheet A12.01, Finish Floor Pattern Plan, to assist bidders in pricing for alternate #2.

END OF BID BULLETIN #02

ROOM FINISH LEGEND:

ACOUSTICAL PANEL CEILING

- APC-1: (CLASSROOMS)
ARMSTRONG OPTIMA VECTOR PLANK #3250, WITH PRELUDE 15/16" GRID FACE, SQUARE TEGULAR EDGE PROFILE, NRC: .95, COLOR: WHITE (WH), SIZE: 2'-0" x 4'-0" x 1"
- APC-2: (GATHERING)
ARMSTRONG OPTIMA VECTOR PLANK #3907 WITH PRELUDE 15/16" GRID FACE, WITH PRELUDE 15/16" EXPOSED TEE GRID, AXIOM CLASSIC TRIM, NRC: .90, COLOR: WHITE (WH), SIZE: 2'-0" x 4'-0" x 1"
- APC-3: (OFFICES, TEACHER RESOURCE, HOTELING, LOUNGE)
ARMSTRONG OPTIMA OPEN PLAN TEGULAR #3250, WITH PRELUDE 15/16" GRID FACE, SQUARE TEGULAR EDGE PROFILE, NRC: .95, COLOR: WHITE (WH), SIZE: 2'-0" x 4'-0" x 1"
- APC-4: (KITCHEN AND PANTRY)
ARMSTRONG CLEAN ROOM MYLAR #1716 WITH PRELUDE 15/16" GRID FACE, SQUARE EDGE PROFILE, NRC: .55, COLOR: WHITE (WH), SIZE: 2'-0" x 4'-0" x 3/4"
- APC-5: (GIPSUM BOARD)

BULLNOSE CORNER BEAD

- BCB: (CLASSROOMS AND CORRIDORS)
NO COAT, IMPACT RESISTANT ULTRA-TRIM BEAD (NO SUBSTITUTIONS)

CARPET

- CPT-1: (MAIN TILE)
MANUFACTURER: BASLAND CONTRACT, COLLECTION: SPEAK, STYLE: CUSTOM SOUND OFF TILE 3 ONLY, COLOR: CUSTOM KABUKI, SIZE: 24"X24", INSTALLATION: MONOLITHIC, CONTACT: NATALIE BROCATO, (913) 800-1971
- CPT-2: (WALK-OFF TILE)
MANUFACTURER: MANNINGTON COMMERCIAL, STYLE: LIAISON COLLECTION, PATTERN: TRAVERSE, COLOR: TBD, SIZE: 24"X24", INSTALLATION: MONOLITHIC

CERAMIC TILE

- CT-1: (FLOOR TILE - GATHERING AREA, ADULT RR)
MANUFACTURER: RBC TILE & STONE BACK BAY, STYLE: CS689/1224, SIZE: 12" x 24", INSTALLATION:
- CT-2: (WALL TILE - ADULT RR, CLASSROOM RR)
MANUFACTURER: RBC TILE & STONE BACK BAY, STYLE: ALG01/224, SIZE: 12" x 24", INSTALLATION:

CERAMIC WALL AND FLOOR TILE GROUT

- GROUT-1: (WALL) SIMILAR TO MANUFACTURER: BOSTIK / TRU COLOR, COLOR: TBD

CONCRETE

- CONC: SEALED CONCRETE

CORNER GUARD

- CG-1: MANUFACTURER: CIS ACRYVYN, SERIES: VA-250N, COLOR: TBD, TEXTURE: SUEDE, SIZE: 3-1/2" x 2-1/2", HEIGHT: 10'-0"
- CG-2: MANUFACTURER: CIS ACRYVYN, SERIES: CO-8, COLOR: 304 STAINLESS ALLOY 16 GAUGE #4 SATIN FINISH, SIZE: 3-1/2"X3-1/2", HEIGHT: FULL HEIGHT

DISPLAY RAIL

- DR-1: MANUFACTURER: GHENT, SERIES: HOLD UP LENGTH CUT TO FIT

FIBERGLASS REINFORCED PANELS

- FRP: SEE SPECIFICATIONS

FRY REGLET

- FR-1: SIMILAR TO MANUFACTURER: FRY REGLET, RADIUS CORNER TRIM RCT-50, FULL HEIGHT

MEDIUM DENSITY FIBERBOARD

- MDF: SEE SPECIFICATIONS

MAGNETIC BOARD

- MB-1: (OUTSIDE CLASSROOMS)
MANUFACTURER: CHEMETAL, WHITE GLOSS MAGNETIC DRY ERASE (152), SIZE: SEE ELEVATION, MOUNTING: ADHESIVE, EDGE: SQUARE EDGES, CONTACT: SARA ERWIN 515-865-0546

PAINT

- NOTE: PAINT SPECIFIED IS FOR COLOR ONLY. SHEEN SHALL BE FLAT FOR CEILINGS, EGGSHELL FOR WALLS, SATIN FOR DOORS, EXPOSED METAL DECK, AND STRUCTURAL CEILING AT THE HIGH ROOF AREAS AND ANY PAINTED EXPOSED DUCTWORK; SEMI-GLOSS FOR HM FRAMES, KITCHENS, PANTRY AND RESTROOMS; AND GLOSS ON MDF-2 (ALL UNLS). ALL PAINT SHALL BE AS SPECIFIED. DO NOT PAINT FACTORY FINISHED/PAINTED ITEMS WITHOUT PRIOR APPROVAL FROM THE ARCHITECT.

- P-1: (MAIN WALL PAINT) SHERWIN WILLIAMS, COLOR: NATURAL CHOICE #5W 7011
- P-2: (YELLOW ACCENT PAINT) SHERWIN WILLIAMS, COLOR: TORCH LIGHT #5W 6374
- P-3: (GREEN ACCENT PAINT) SHERWIN WILLIAMS, COLOR: SASSY GREEN #5W 6416
- P-4: (BLUE ACCENT PAINT) SHERWIN WILLIAMS, COLOR: DRIZZLE #5W 6479
- P-5: (PURPLE ACCENT PAINT) SHERWIN WILLIAMS, COLOR: VICARIOUS VIOLET #5W 6838
- P-6: (HM FRAMES) SHERWIN WILLIAMS, COLOR: 1b.d. #5W 1b.d.
- P-7: (GB CEILINGS) SHERWIN WILLIAMS, COLOR: 1b.d. #5W 1b.d.

PLASTIC LAMINATE

- PLAM-1: (VERTICAL SURFACES, CABINET DOORS)
MANUFACTURER: WILSONART, PATTERN: HIGH LINE (7970K-18), FINISH: LINEARITY (18), PROVIDE PVC EDGE BANDING: DOELKEN, PATTERN: 2240 KHAKI BROWN, CONTACT: LORI VAN CLEAVE 402-342-4489
- PLAM-2: (PLAY ELEMENTS)
MANUFACTURER: FORMICA, PATTERN: MDF SOLIDZ (7812-SP), FINISH: SCULPTED
CONTACT: SARA ERWIN 515-865-0546

QUARRY TILE

- QT-1: (KITCHEN 105; PANTRY 106A)
MANUFACTURER: DALLE TILE, STYLE: QUARRY FLOOR TILE, COLOR: GOLDEN BROWN 0078, FINISH: SMOOTH SURFACE, SIZE: 6"x6"; PROVIDE COVE BASE- STYLE: P-3655, COLOR: GOLDEN BROWN 0078, SIZE: 6"x6"

RUBBER BASE

- RB-1: (MAIN)
MANUFACTURER: MANNINGTON COMMERCIAL, COLOR: TBD, EDGE: MANNINGTON EDGE (TYPE TV) COVE BASE, HEIGHT: 4"

SHEET VINYL FLOORING

- SVF-1: (MAIN) MANUFACTURER: MANNINGTON COMMERCIAL, STYLE: STREAMLINE, COLOR: MODEL (PAR208), ROLL WIDTH: 1b.d.
- SVF-2: (RESTROOMS) MANUFACTURER: MANNINGTON COMMERCIAL, STYLE: FLOW, COLOR: MODEL (PAR306), ROLL WIDTH: 1b.d.

SOLID SURFACE MATERIAL

- SSM-1: (COUNTERTOP SURFACE)
MANUFACTURER: CORIAN, COLOR: WILLOW, FINISH: POLISHED

WALL COVERING

- WC-1: (MAIN HALLWAYS)
MANUFACTURER: D.L. COUCH, COLLECTION: LANARK, PATTERN: WIRED (L2-WH-11), COLOR: PYRITE, WIDTH: 54"

WINDOWSHADE

- WS-1: MANUFACTURER: MECHOSHAD SYSTEMS INC, ECOVEIL SCREENS 1350 SERIES (5% OPEN), COLOR: EGGSHELL (1366); SEE SPECIFICATIONS FOR MORE INFORMATION AND ELECTRICAL DWGS.

WOOD

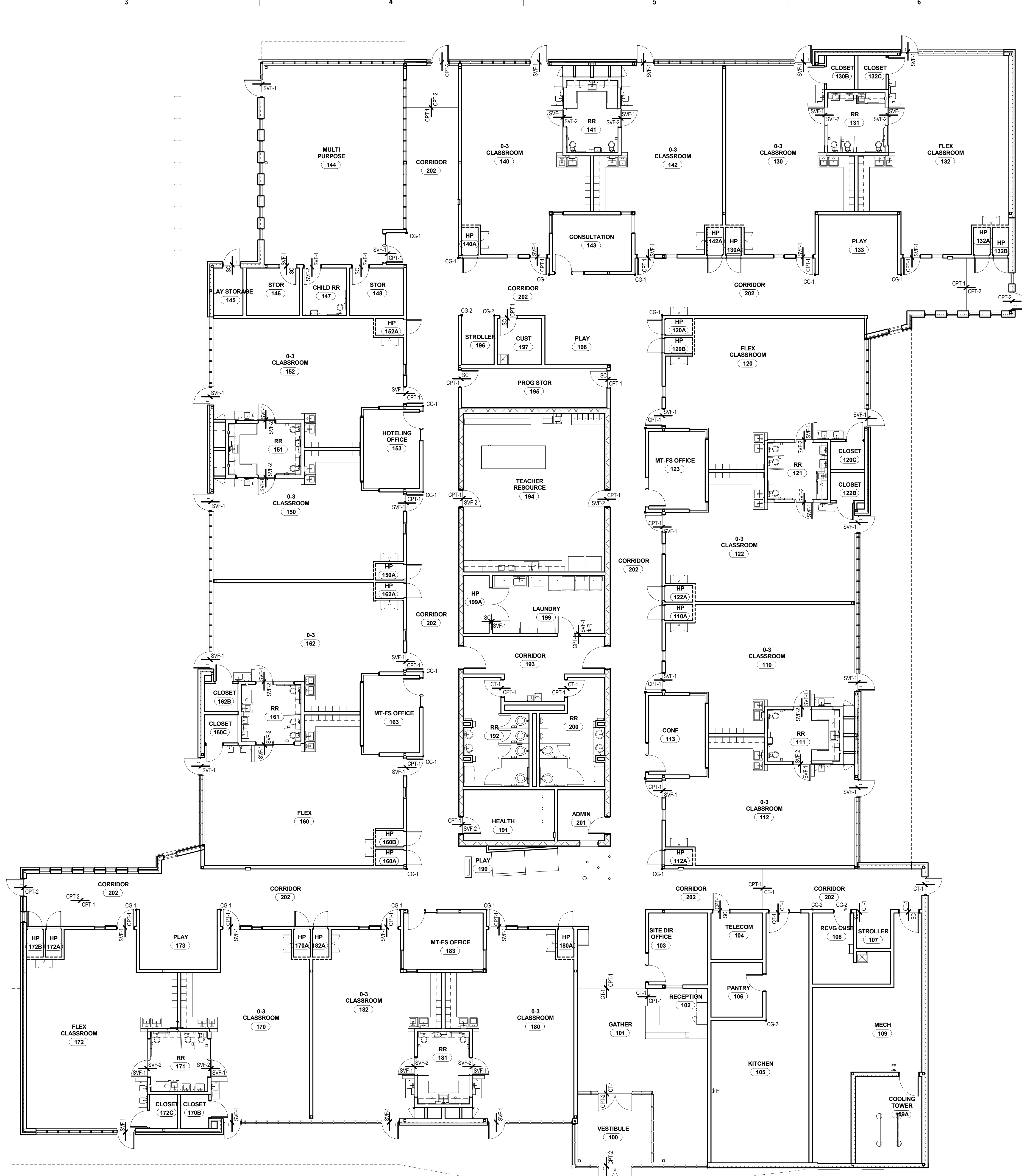
- WD-1: (DOORS)
MANUFACTURER: MARSHFIELD DOOR SYSTEMS, SPECIES: WHITE OAK, CUT: RIFT, FINISH: NUTMEG 48-97

WD-2: (ACCENT)

- SPECIES: WHITE OAK, CUT: RIFT, FINISH: NUTMEG 48-97

WOOD STAIN

- ST-1: MATCH ARCHITECTS SAMPLE (SEE SPECIFICATIONS FOR WOOD SPECIES)



A3 FINISH FLOOR PATTERN PLAN
1/8" = 1'-0"

Structural Package

FOR INFORMATION ONLY

SKINNER EARLY CHILDHOOD CENTER

RDG.
PLANNING & DESIGN

ARCHITECT
RDG Planning & Design
1002 Planning & Design
Omaha, NE 68111
(402) 342-8252 Fax
(402) 342-8252

STRUCTURAL
Advanced Engineering
1002 Planning & Design
Omaha, NE 68111
(402) 342-8252 Fax
(402) 342-8252

MECHANICAL/ELECTRICAL
Advanced Engineering
1002 Planning & Design
Omaha, NE 68111
(402) 342-8252 Fax
(402) 342-8252

LANDSCAPE ARCHITECT
RDG Planning & Design
1002 Planning & Design
Omaha, NE 68111
(402) 342-8252 Fax
(402) 342-8252

FOOD SERVICE EQUIPMENT
Sherrill Consulting, Inc.
1002 Planning & Design
Omaha, NE 68111
(402) 342-8252 Fax
(402) 342-8252

CIVIL
Edward Griffin & Associates
1002 Planning & Design
Omaha, NE 68111
(402) 342-8252 Fax
(402) 342-8252

4304 North 33rd Street
Omaha, NE 68111

KEY PLAN

REV	DATE	DESCRIPTION
ISSUED	AUG 28, 2014	
PROJECT NO.	2014.128.00	

RDG Planning & Design
1002 Planning & Design
Omaha, NE 68111
(402) 342-8252 Fax
(402) 342-8252

FINISH FLOOR PATTERN PLAN

A12.01