



DATE ISSUED 9.10.2014

ADDENDUM # 1

ENGINEER Engineering Technologies, Inc.
825 M Street, Suite 200
Lincoln, NE 68508

PROJECT LPS Security/Technology Ready Facilities - Project F

ETI PROJECT # 2014-028

The Architect issues this Addendum to all known bidders before receipt of proposals. Bidder shall acknowledge the receipt of this addendum on their proposal sheet and all information contained herein shall become a part of the contract documents.

ADDENDUM:

SPECIFICATIONS - TELECOMMUNICATIONS

- 1. Section 27 11 01 - Communications Equipment Room Fittings
A. Revise Paragraph 3.02 A and B to read as follows.

3.02 PATCH CORDS

- A. All Telecommunications Room / Rack patch cords and Work Area (end device) patch cords are furnished and installed by Lincoln Public Schools.
B. All patch cords for Wireless Access Points and all patch cords from AV Gear Box to the room communications outlets shall be furnished and installed by contractor as specified and as indicated on the drawings.

- 2. Section 27 15 13 - Communications Copper Horizontal Cabling
A. Revise Paragraph 3.05 A to read as follows.

3.05 PATCH CORDS

- A. Furnish and install all patch cords for Wireless Access Points and all patch cords from AV Gear Box to the room communications outlets as specified and as indicated on the drawings.

DRAWINGS - TELECOMMUNICATIONS

Kahoa Elementary School

- 1. Sheet 140.T01A Kahoa Elementary School First Floor Telecommunications Plan - Area A
A. Attachment 1 - Room 117 - Move Gear Box near the other door to be closer to the presentation wall.
B. Attachment 2 - Room 100 - Add WAP 2,0
2. Sheet 140.T01B Kahoa Elementary School First Floor Telecommunications Plan - Area B
A. Attachment 1 - Room 128B - Change Gear Box fiber count to "2,3".

Rousseau Elementary School

- 1. Sheet 165.T01A Rousseau Elementary School First Floor Telecommunications Plan - Area A
A. Attachment 1 - Room 116 - Move WAP near 116C to better center the WAP for coverage of the area.
2. Sheet 165.T01B Rousseau Elementary School First Floor Telecommunications Plan - Area B
A. Attachment 1 - Room 141 - Add WAP 2,0.

Zeman Elementary School

1. Sheet 169.T01B Zeman Elementary School First Floor Telecommunications Plan – Area B
 - A. Attachment 1 - Room 102 – Move WAP to center of wall along Corridor 181.
 - B. Attachment 2 - Room 182B – Add WAP 2,0.
 - C. Room 117A – Remove WAP.

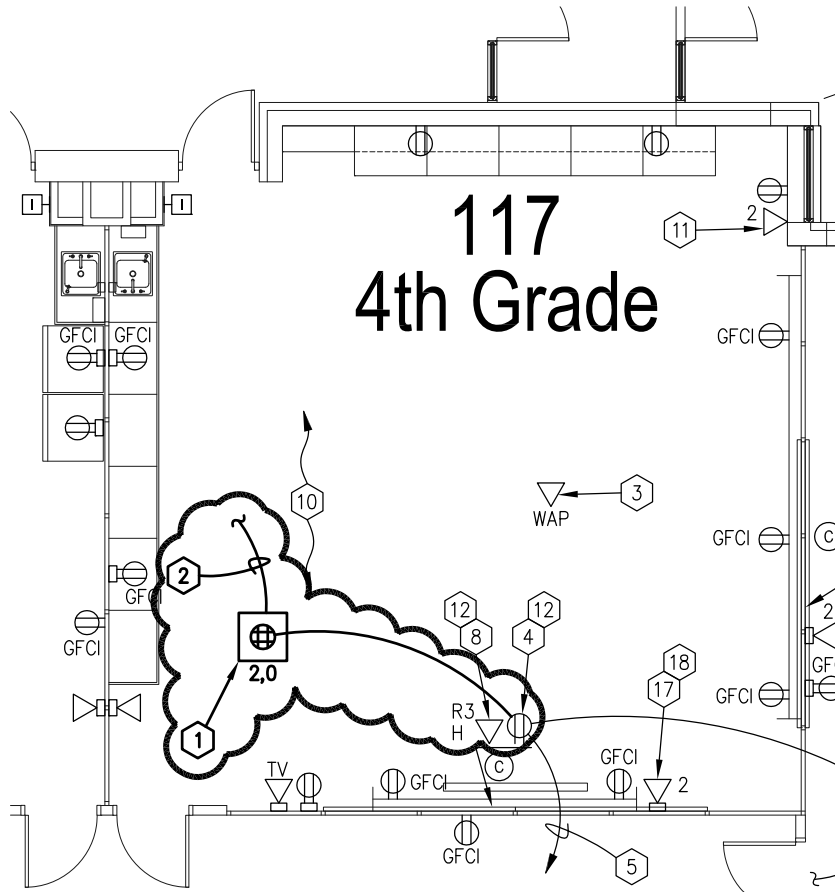
North Star High School

1. Sheet 305.T02A North Star High School Main Level Telecommunications Plan – Area A
 - A. Room E119 – Add WAP 2,0.
2. Sheet 305.T02F North Star High School Main Level Telecommunications Plan – Area F
 - A. Attachment 1 - Room 182 – Move WAP from column #2 (top to bottom) to column #1.
 - B. Attachment 1 - Room 182 – Move WAP from column #5 (top to bottom) to column #4.
 - C. Attachment 2 - Room C115 – Add WAP 2,0.
 - D. Room C116 – Remove WAP.
3. Sheet 305.T22 North Star High School Reference Telecommunications Riser
 - A. New Fiber Riser Diagram
 - i. Note 1 does not apply to data room C122C. Do not pull new fiber to this room.

Southwest High School

1. Sheet 306.T02A North Star High School Main Level Telecommunications Plan – Area A
 - A. Attachment 1 - Room E119 – Add WAP 2,0.
2. Sheet 306.T02F North Star High School Main Level Telecommunications Plan – Area F
 - A. Attachment 1 - Room 182 – Move WAP from column #2 (top to bottom) to column #1.
 - B. Attachment 1 - Room 182 – Move WAP from column #5 (top to bottom) to column #4.
 - C. Attachment 2 - Room C115 – Add WAP 2,0.
 - D. Room C116 – Remove WAP.
3. Sheet 306.T22 North Star High School Reference Telecommunications Riser
 - A. New Fiber Riser Diagram
 - i. Note 1 does not apply to data room C122C. Do not pull new fiber to this room.

END OF ADDENDUM

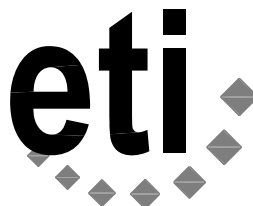


LPS SECURITY & TECHNOLOGIES
 UPGRADES PROJECT F - KAHAO
 FIRST FLOOR TELECOM PLAN
 AREA "A"



SCALE: 1/8" = 1'-0"

MAB



Engineering Technologies Inc.
 Mechanical & Electrical Building Solutions

825 M Street, Suite 200 | Lincoln, NE 68508
 P 402.476.1273 | F 402.476.1274

1111 N. 13th Street, Suite 216 | Omaha, NE
 68102 | P 402.330.2772 | F 402.330.2630

ETI Project No: (2014-028)

ADD #1

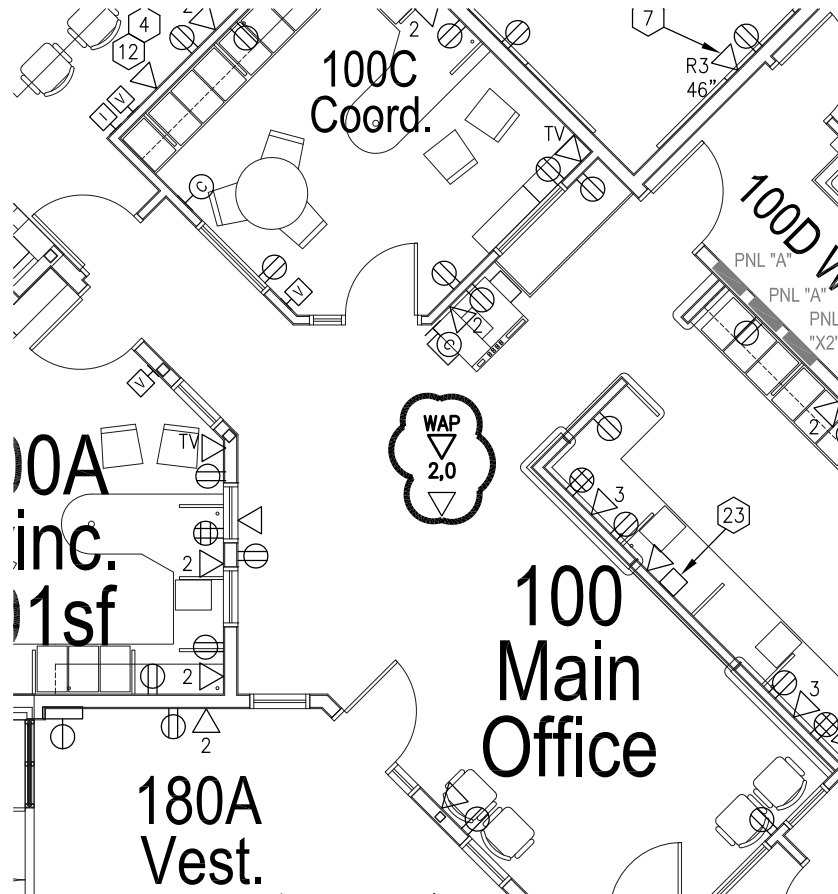
SHEET

140.T01A

ATTACHMENT NO.

1

09/10/2014

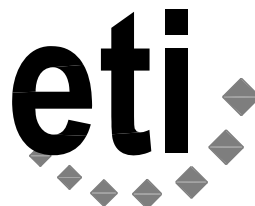


LPS SECURITY & TECHNOLOGIES
 UPGRADES PROJECT F - KAHAO
 FIRST FLOOR TELECOM PLAN
 AREA "A"



SCALE: 1/8" = 1'-0"

MAB



Engineering Technologies Inc.
 Mechanical & Electrical Building Solutions

825 M Street, Suite 200 | Lincoln, NE 68508
 P 402.476.1273 | F 402.476.1274

1111 N. 13th Street, Suite 216 | Omaha, NE
 68102 | P 402.330.2772 | F 402.330.2630

ETI Project No: (2014-028)

ADD #1

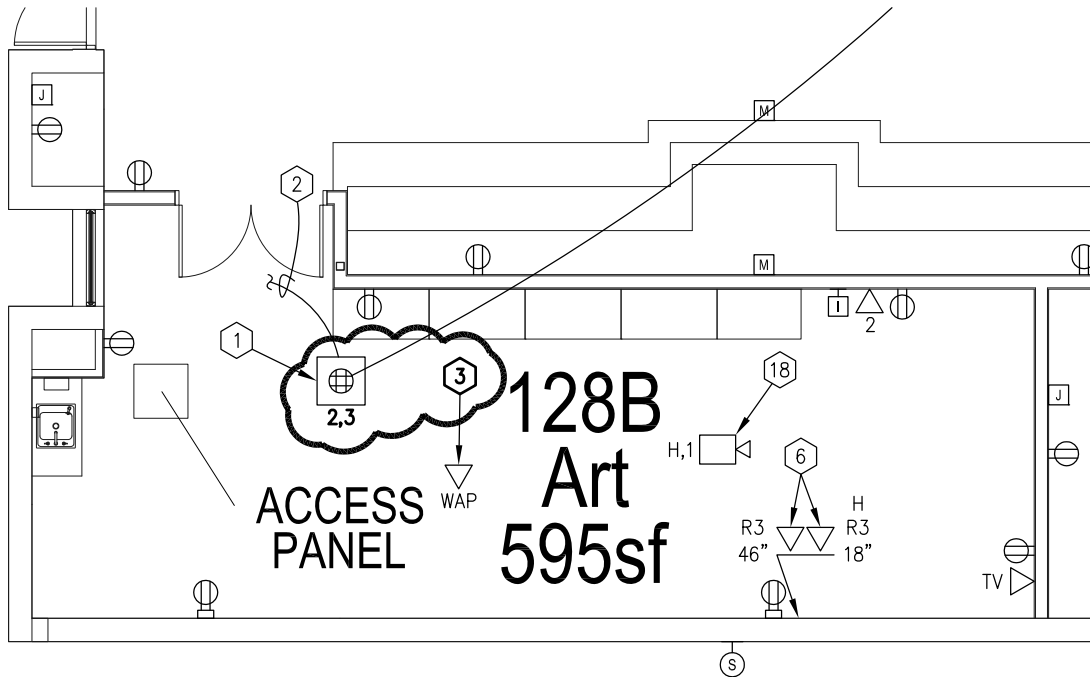
SHEET

140.T01A

ATTACHMENT NO.

2

09/10/2014

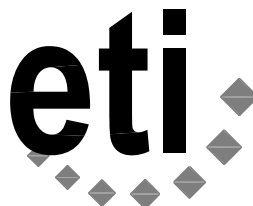


LPS SECURITY & TECHNOLOGIES
 UPGRADES PROJECT F - KAHAO
 FIRST FLOOR TELECOM PLAN
 AREA "B"



SCALE: 1/8" = 1'-0"

MAB



Engineering Technologies Inc.
 Mechanical & Electrical Building Solutions

825 M Street, Suite 200 | Lincoln, NE 68508
 P 402.476.1273 | F 402.476.1274

1111 N. 13th Street, Suite 216 | Omaha, NE
 68102 | P 402.330.2772 | F 402.330.2630

ETI Project No: (2014-028)

ADD #1

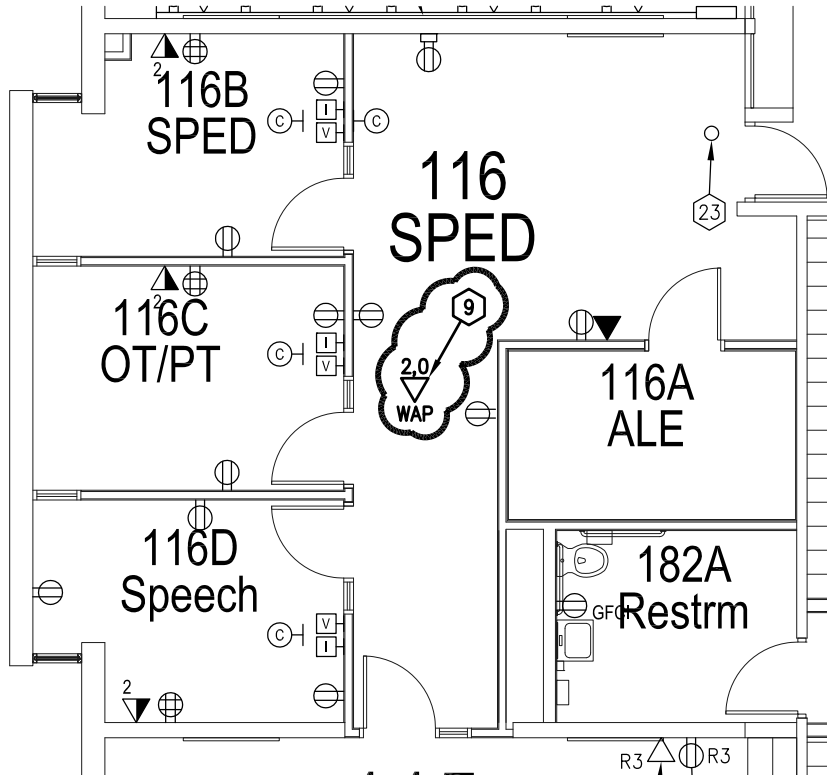
SHEET

140.T01B

ATTACHMENT NO.

1

09/10/2014

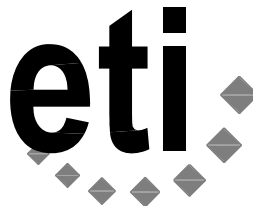


LPS SECURITY & TECHNOLOGIES
 UPGRADES PROJECT F -
 ROUSSEAU FIRST FLOOR TELECOM
 PLAN AREA "A"



SCALE: 1/8" = 1'-0"

MAB



Engineering Technologies Inc.
 Mechanical & Electrical Building Solutions

825 M Street, Suite 200 | Lincoln, NE 68508
 P 402.476.1273 | F 402.476.1274

1111 N. 13th Street, Suite 216 | Omaha, NE
 68102 | P 402.330.2772 | F 402.330.2630

ETI Project No: (2014-028)

ADD #1

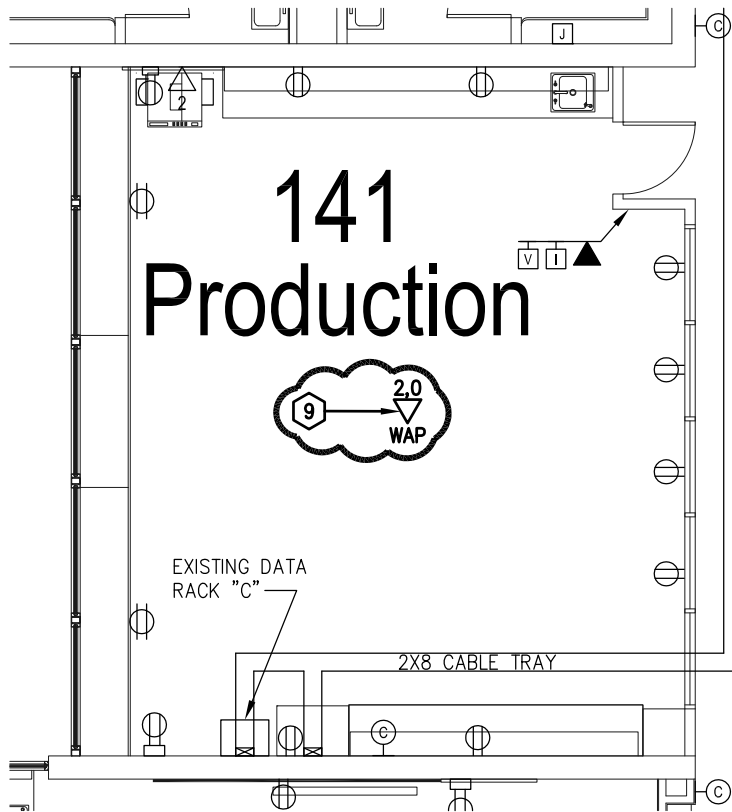
SHEET

165.T01A

ATTACHMENT NO.

1

09/10/2014

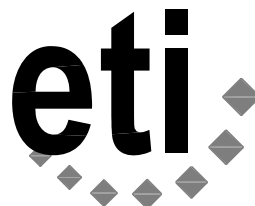


LPS SECURITY & TECHNOLOGIES
UPGRADES PROJECT F -
ROUSSEAU FIRST FLOOR TELECOM
PLAN AREA "B"



SCALE: 1/8" = 1'-0"

MAB



Engineering Technologies Inc.
Mechanical & Electrical Building Solutions

825 M Street, Suite 200 | Lincoln, NE 68508
P 402.476.1273 | F 402.476.1274

1111 N. 13th Street, Suite 216 | Omaha, NE
68102 | P 402.330.2772 | F 402.330.2630

ETI Project No: (2014-028)

ADD #1

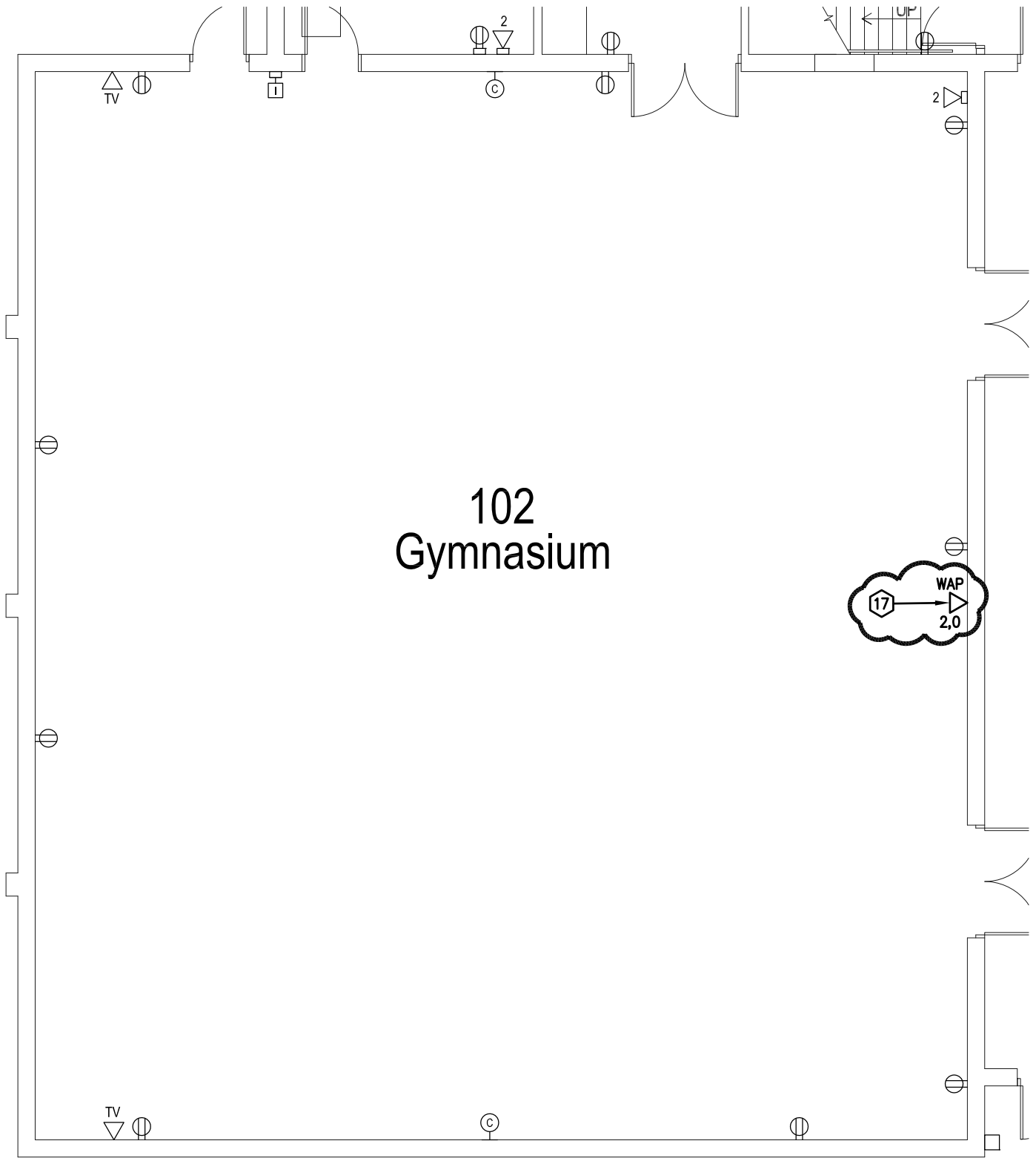
SHEET

165.T01B

ATTACHMENT NO.

1

09/10/2014



LPS SECURITY & TECHNOLOGIES
 UPGRADES PROJECT F - ZEMAN
 FIRST FLOOR TELECOM PLAN
 AREA "B"

SCALE: 1/8" = 1'-0"



MAB



Engineering Technologies Inc.
 Mechanical & Electrical Building Solutions

825 M Street, Suite 200 | Lincoln, NE 68508
 P 402.476.1273 | F 402.476.1274

1111 N. 13th Street, Suite 216 | Omaha, NE
 68102 | P 402.330.2772 | F 402.330.2630

ETI Project No: (2014-028)

ADD #1

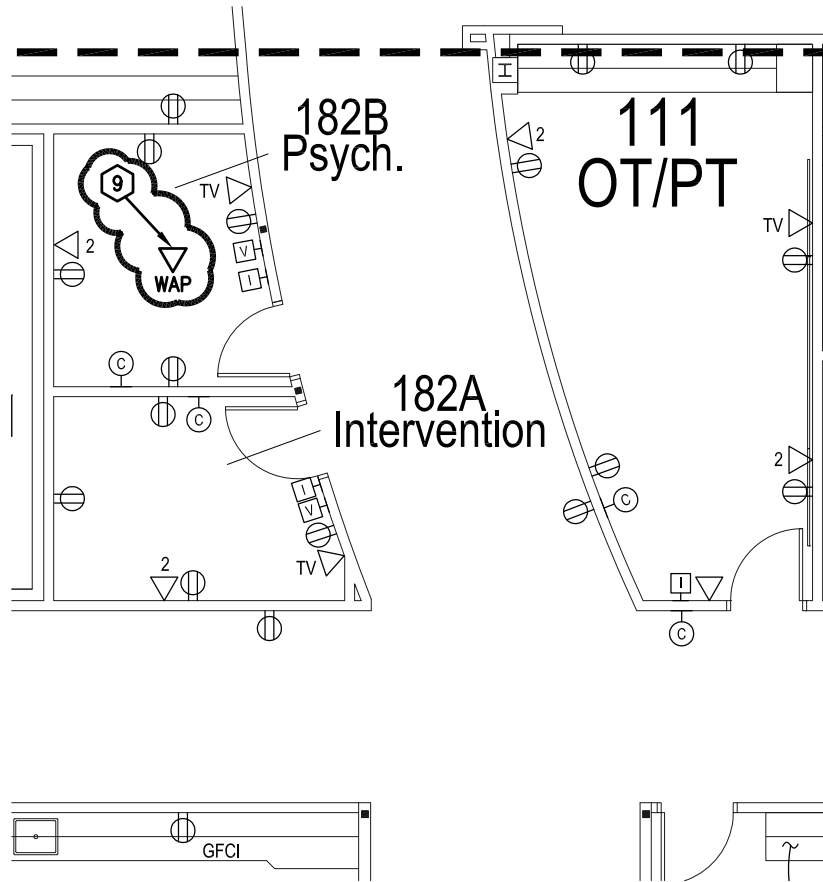
SHEET

169.T01B

ATTACHMENT NO.

1

09/10/2014



LPS SECURITY & TECHNOLOGIES
 UPGRADES PROJECT F - ZEMAN
 FIRST FLOOR TELECOM PLAN
 AREA "B"

SCALE: 1/8" = 1'-0"



MAB



Engineering Technologies Inc.
 Mechanical & Electrical Building Solutions

825 M Street, Suite 200 | Lincoln, NE 68508
 P 402.476.1273 | F 402.476.1274

1111 N. 13th Street, Suite 216 | Omaha, NE
 68102 | P 402.330.2772 | F 402.330.2630

ETI Project No: (2014-028)

ADD #1

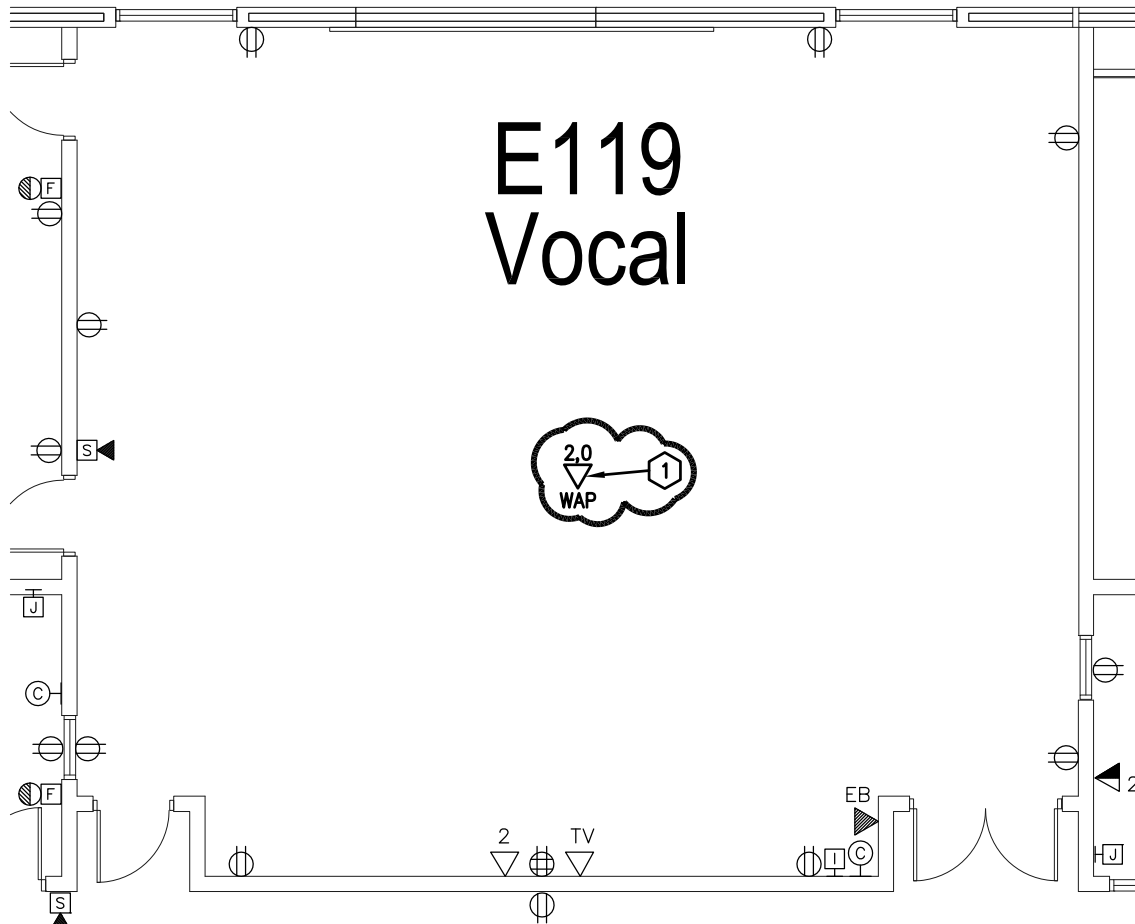
SHEET

169.T01B

ATTACHMENT NO.

2

09/10/2014

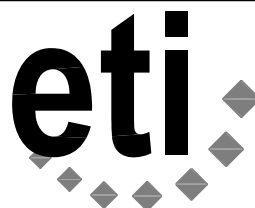


LPS SECURITY & TECHNOLOGIES
 UPGRADES PROJECT F -
 NORTHSTAR HIGH SCHOOL MAIN
 LEVEL TELECOM PLAN AREA "A"



SCALE: 1/8" = 1'-0"

MAB



Engineering Technologies Inc.
 Mechanical & Electrical Building Solutions

825 M Street, Suite 200 | Lincoln, NE 68508
 P 402.476.1273 | F 402.476.1274

1111 N. 13th Street, Suite 216 | Omaha, NE
 68102 | P 402.330.2772 | F 402.330.2630

ETI Project No: (2014-028)

ADD #1

SHEET

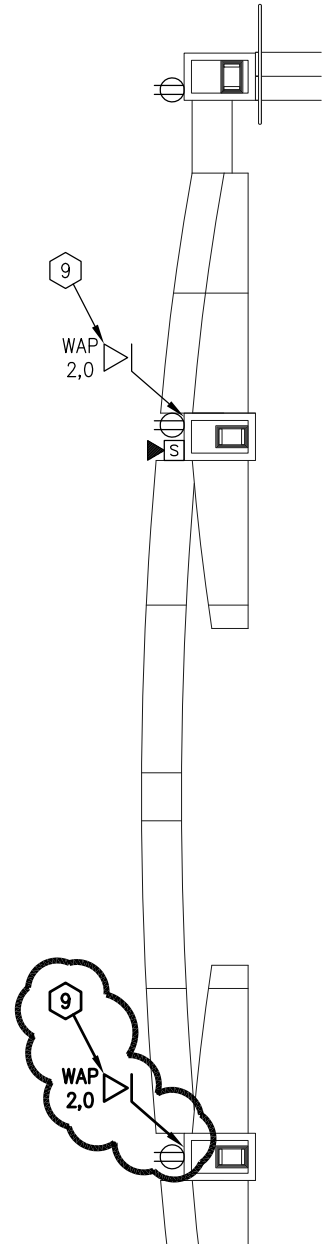
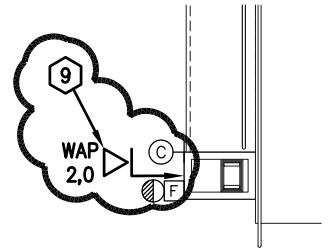
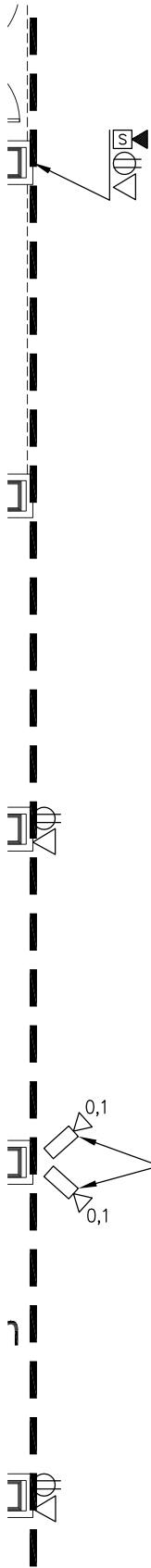
305.T02A

ATTACHMENT NO.

1

09/10/2014

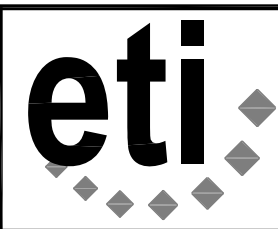
182 Cafeteria



LPS SECURITY & TECHNOLOGIES
 UPGRADES PROJECT F -
 NORTHSTAR HIGH SCHOOL MAIN
 LEVEL TELECOM PLAN AREA "F"

SCALE: 1/8" = 1'-0"

MAB



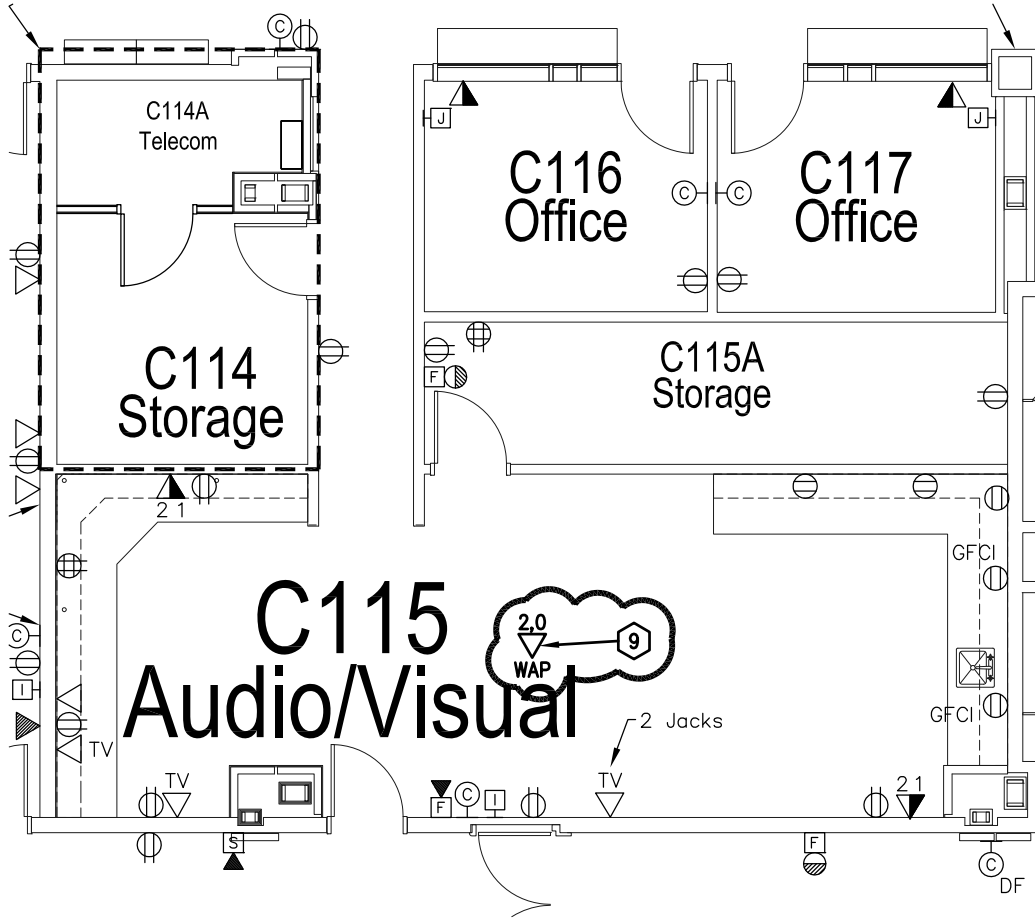
Engineering Technologies Inc.
 Mechanical & Electrical Building Solutions

825 M Street, Suite 200 | Lincoln, NE 68508
 P 402.476.1273 | F 402.476.1274

1111 N. 13th Street, Suite 216 | Omaha, NE
 68102 | P 402.330.2772 | F 402.330.2630

ETI Project No: (2014-028)

ADD #1
SHEET
305.T02F
ATTACHMENT NO.
1
09/10/2014



LPS SECURITY & TECHNOLOGIES
 UPGRADES PROJECT F -
 NORTHSTAR HIGH SCHOOL MAIN
 LEVEL TELECOM PLAN AREA "F"

SCALE: 1/8" = 1'-0"



MAB



Engineering Technologies Inc.
 Mechanical & Electrical Building Solutions

825 M Street, Suite 200 | Lincoln, NE 68508
 P 402.476.1273 | F 402.476.1274

1111 N. 13th Street, Suite 216 | Omaha, NE
 68102 | P 402.330.2772 | F 402.330.2630

ETI Project No: (2014-028)

ADD #1

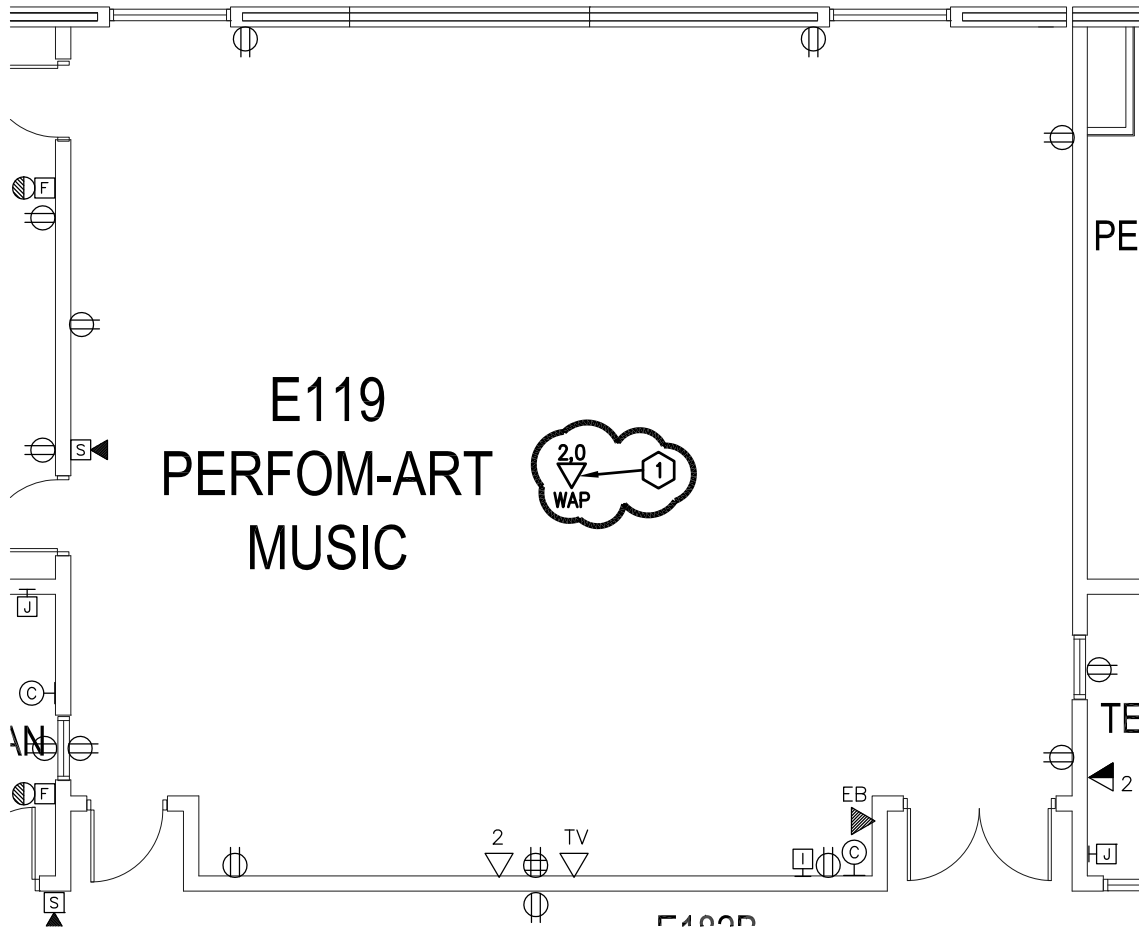
SHEET

305.T02F

ATTACHMENT NO.

2

09/10/2014

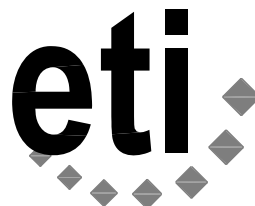


LPS SECURITY & TECHNOLOGIES
 UPGRADES PROJECT F -
 SOUTHWEST HIGH SCHOOL MAIN
 LEVEL TELECOM PLAN AREA "A"



SCALE: 1/8" = 1'-0"

MAB



Engineering Technologies Inc.
 Mechanical & Electrical Building Solutions

825 M Street, Suite 200 | Lincoln, NE 68508
 P 402.476.1273 | F 402.476.1274

1111 N. 13th Street, Suite 216 | Omaha, NE
 68102 | P 402.330.2772 | F 402.330.2630

ETI Project No: (2014-028)

ADD #1

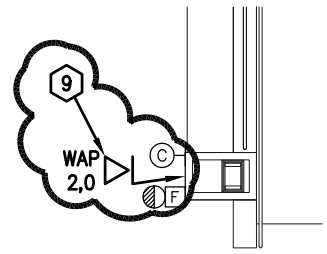
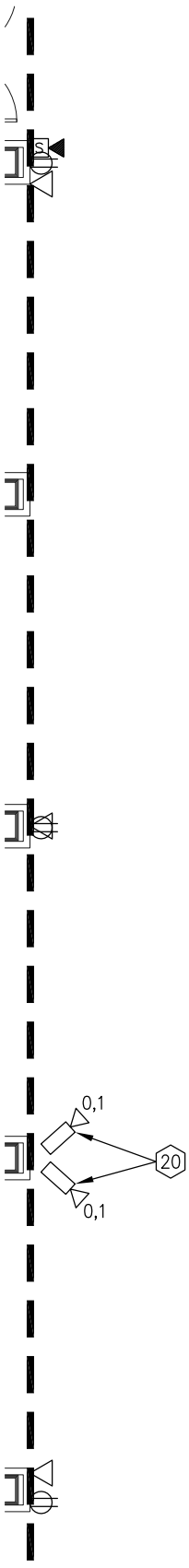
SHEET

306.T02A

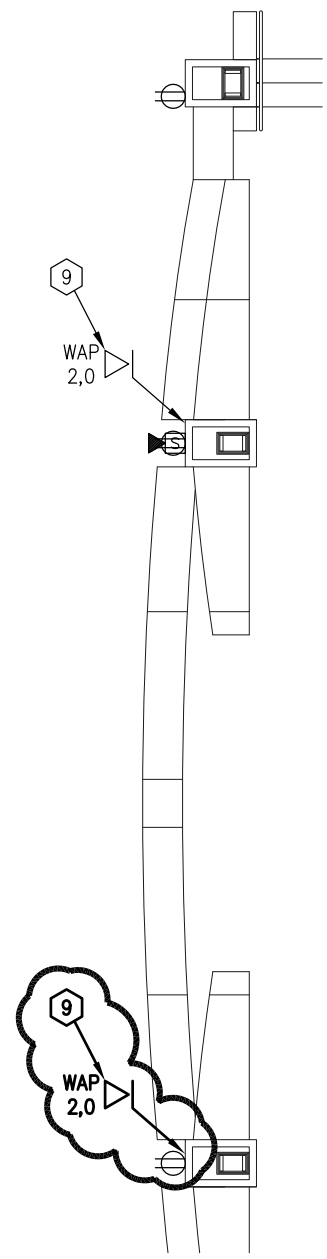
ATTACHMENT NO.

1

09/10/2014



182 FOOD-SVC CAFETERIA



LPS SECURITY & TECHNOLOGIES
UPGRADES PROJECT F -
SOUTHWEST HIGH SCHOOL MAIN
LEVEL TELECOM PLAN AREA "F"

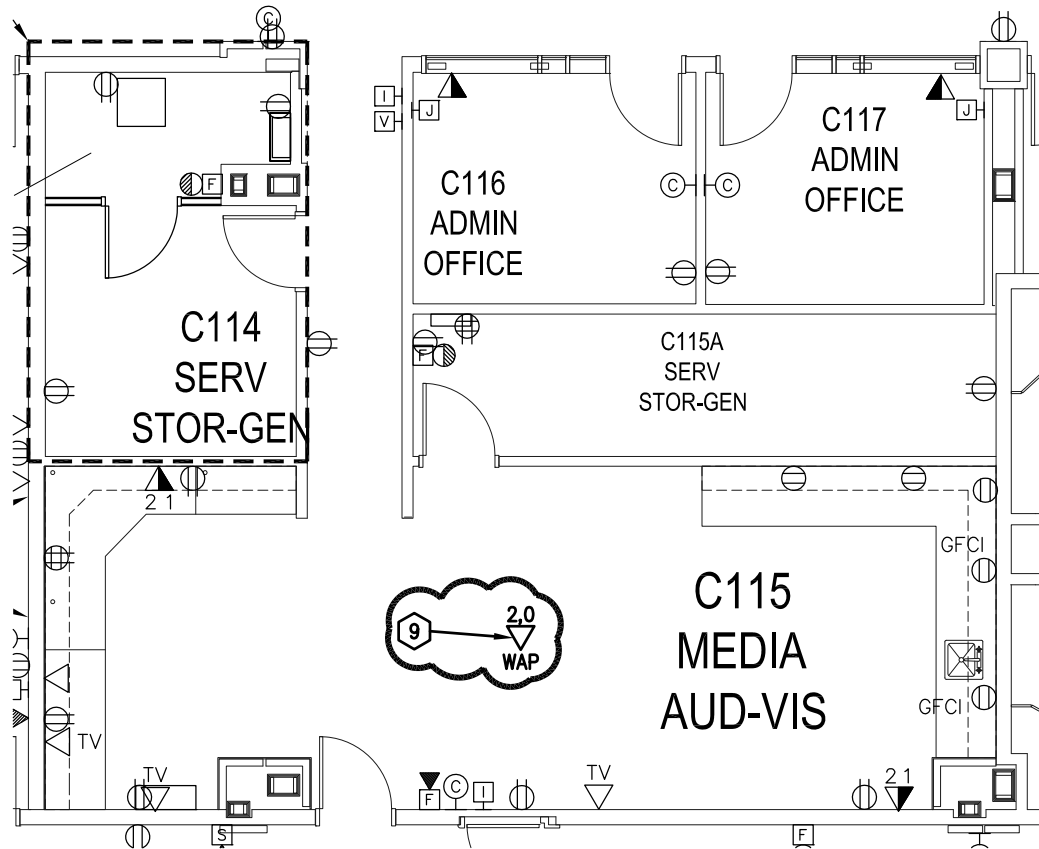
SCALE: 1/8" = 1'-0"

MAB



Engineering Technologies Inc.
Mechanical & Electrical Building Solutions
825 M Street, Suite 200 | Lincoln, NE 68508
P 402.476.1273 | F 402.476.1274
1111 N. 13th Street, Suite 216 | Omaha, NE
68102 | P 402.330.2772 | F 402.330.2630
ETI Project No: (2014-028)

ADD #1
SHEET
306.T02F
ATTACHMENT NO.
1
09/10/2014

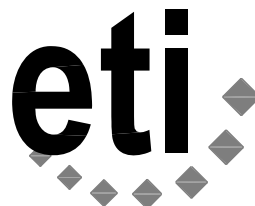


LPS SECURITY & TECHNOLOGIES
 UPGRADES PROJECT F -
 SOUTHWEST HIGH SCHOOL MAIN
 LEVEL TELECOM PLAN AREA "F"

SCALE: 1/8" = 1'-0"



MAB



Engineering Technologies Inc.
 Mechanical & Electrical Building Solutions

825 M Street, Suite 200 | Lincoln, NE 68508
 P 402.476.1273 | F 402.476.1274

1111 N. 13th Street, Suite 216 | Omaha, NE
 68102 | P 402.330.2772 | F 402.330.2630

ETI Project No: (2014-028)

ADD #1

SHEET

306.T02F

ATTACHMENT NO.

2

09/10/2014