



ARCHITECTURE • ENGINEERING • INTERIOR DESIGN

ADDENDUM

PROJECT: Waverly Lawson Park
Phase II Improvements
Waverly, Nebraska

ADDENDUM NUMBER

AD-1

ISSUED BY:

Leroy Svatora, Architect
Frank Doland, Civil Engineer
Darin Sperling, Structural Engineer
Brandon Sire, Mechanical Engineer
Jon Dalton, Electrical Engineer

PROJECT #: 14-0166

DATE ISSUED: Wednesday, September 10, 2014

This addendum is issued by the Architect to all known bidders before receipt of proposals, for the purpose of explaining, interpreting, or modifying the original plans and specifications. When enumerated by the bidder upon the proposal sheet, the information or instructions given hereon will be equally binding upon all parties as if included in the original plans and specifications.

BIDDER MUST ENTER THE NUMBER OF THIS ADDENDUM ON HIS PROPOSAL SHEET

THE FOLLOWING ITEMS ARE APPLICABLE TO THE SPECIFICATIONS:

AD-1, ITEM 1:

In reference to **Section 064113 - Wood-Veneer-Faced Architectural Cabinets**, Page 064113-4, under Article 2.6 Cabinet Hardware and Accessories, add the following:

- L. Countertop Support Brackets: Hafele Co., 'Hegbo Fixed Brackets', Model No. 287.44.470

AD-1, ITEM 2:

In reference to **Section 072100 - Thermal Insulation**, Page 072100-1, under Article 2.1 Glass-Fiber Blanket Insulation add Subparagraph 4 reading "Knauf Insulation" as an approved manufacturer:

AD-1, ITEM 3:

In reference to **Section 074213.53 - Metal Soffit Panels**, Page 074213.53-3, Article 3.2 - Metal Panel Installation, under Paragraph A, add Subparagraph 1 reading as follows:

1. Pattern: Apply soffit panels in proportion of 25% perforated ventilation panels and 75% solid (every 4th panel to be perforated).

AD-1, ITEM 4:

In reference to Section 081113 - Hollow Metal Doors and Frames, Page 081113-1, under Article 2.1, Paragraph A, add Subparagraph 4 reading "Mesker Door" as an approved manufacturer

AD-1, ITEM 5:

In reference to Section 083613 - Sectional Doors, provide and install manufacturer's recommended electric door operators with interior wall-mounted three-button ("open", "close", and "stop") remote push button control station and associated safety sensors.

AD-1, ITEM 6:

In reference to Section 085313 - Vinyl Windows, Page 085313-1, under Article 2.1, Paragraph A, add Subparagraph 2 reading "Jeld-Wen Windows" as an approved manufacturer.

AD-1, ITEM 7:

In reference to Section 085313 - Vinyl Windows, Page 085313-1, under Article 2.1, Paragraph A, add Subparagraph 3 reading "Vector Windows" as an approved manufacturer.

AD-1, ITEM 8:

In reference to Section 224000 - Plumbing Fixtures, entire section is attached.

AD-1, ITEM 9:

In reference to Section 238126 – Split-System Air-Conditioners, Article 2.1, under Paragraph A, add Subparagraph 4 reading:

4. Daikin

THE FOLLOWING ITEMS ARE APPLICABLE TO THE DRAWINGS:

AD-1, ITEM 10:

In reference to Sheet G101 - Building Information, change 'YES' to 'NO' at Smoke Detector and Fire Alarm categories.

AD-1, ITEM 11:

In reference to Sheet S-101C - Structural Framing Plans, interior frost slabs have been added to Foundation Plan 1. See clouded area on attached Supplemental Drawings S-101C.1.

AD-1, ITEM 12:

In reference to Sheet A-101C - First Level Ceiling Plan, delete all notes and references to a Direct-applied Exterior Finish System at all roof soffit areas, associated Fry Reglet ventilation trim pieces, and 5/8" gypsum sheathing substrate. Provide and install prefinished steel soffit / ceiling panels per Section 074213.53. Refer also to details on Sheet A-401C, A-402C, A-403C, and A-404C.

AD-1, ITEM 13:

In reference to Sheet A-102C - Second Level Ceiling Plan, delete all notes and references to a Direct-applied Exterior Finish System at all roof soffit areas, associated Fry Reglet ventilation trim pieces, and 5/8" gypsum sheathing substrate. Provide and install prefinished steel soffit / ceiling panels per Section 074213.53. Refer also to details on Sheet A-401C, A-402C, A-403C, and A-404C.

AD-1, ITEM 14:

In reference to Sheet A-102C - Second Level Ceiling Plan, interior elevation reference tags have been added to the plan. See clouded area on attached Supplemental Drawing A-102C.1.

AD-1, ITEM 15:

In reference to Sheet A-103M - First Level Ceiling Plan, delete all notes and references to a Direct-applied Exterior Finish System at all roof soffit areas, associated Fry Reglet ventilation trim pieces, and 1/2" sheathing board substrate. Provide and install prefinished steel soffit / ceiling panels per Section 074213.53. Refer also to details on Sheet A-302M and A-505M.

AD-1, ITEM 16:

In reference to Sheet A-104S - Reflected Ceiling Plan, delete all notes and references to a Direct-applied Exterior Finish System at all ceiling and roof soffit areas, associated Fry Reglet ventilation trim pieces, and 5/8" sheathing substrate. Provide and install prefinished steel soffit / ceiling panels per Section 074213.53. Refer also to details on Sheet A-303S.

AD-1, ITEM 17:

In reference to Sheet A-203C - Interior Elevations, casework section details were added to the sheet along with tag references to corresponding elevations. See clouded area on attached Supplemental Drawing A-203C.

AD-1, ITEM 18:

In reference to Sheet A-203C - Interior Elevations, elevations 9 & 10 were revised. See clouded area on attached Supplemental Drawing A-203C.

AD-1, ITEM 19:

In reference to Sheet A-302M - Building Sections, revisions have been made to wall section 6. See clouded area on attached Supplemental Drawing A-302M.1.

AD-1, ITEM 20:

In reference to Sheet A-405C - Stair/ Wall Sections, stair section 1 & 2 were revised. See clouded area on attached Supplemental Drawing A-405C.

AD-1, ITEM 21:

In reference to Sheet A-503C - Details, door head detail 5 has been added. See attached Supplemental Drawing A-503C.1.

AD-1, ITEM 22:

In reference to **Sheet A-503C - Details**, door jamb detail 7 has been added. See attached Supplemental Drawing A-503C.2.

AD-1, ITEM 23:

In reference to **Sheet A-402C - Wall Sections**, the frost slab shown on wall section 1 shall reference detail 6 shown on sheet A-503C. See attached Supplemental Drawing A-503C.3.

AD-1, ITEM 24:

In reference to **Sheet A-503C - Details**, frost slab detail 6 has been revised, this detail corresponds to the frost slab shown on wall section 8, sheet A-401C and wall section 1, sheet A-402C. See attached Supplemental Drawing A-503C.3.

AD-1, ITEM 25:

In reference to **Sheet A-504C - Details**, jamb detail 5 has been added to the sheet. See attached Supplemental Drawing A-504C.1.

AD-1, ITEM 26:

In reference to **Sheet A-505M - Details**, a jamb detail for the overhead door has been added to the sheet. See attached Supplemental Drawing A-505M.1.

AD-1, ITEM 27:

In reference to **Sheet A-506M - Details**, door jamb & head details 1 & 3 have been added to the sheet. See attached Supplemental Drawing A-506M.1.

AD-1, ITEM 28:

In reference to **Sheet A-601 - Schedules**, the door hardware schedule was added to the sheet. See clouded area on attached Supplemental Drawing A-601.

AD-1, ITEM 29:

In reference to **Sheet A-601 - Schedules**, revisions have been made to the Door & Frame Schedule. See clouded area on attached Supplemental Drawing A-601.

AD-1, ITEM 30:

In reference to **Sheet A-601 - Schedules**, revisions have been made to the Door Type Schedule. See clouded area on attached Supplemental Drawing A-601.

AD-1, ITEM 31:

In reference to **Sheet A-601 - Schedules**, elevation D was added to the listed door elevations. See clouded area on attached Supplemental Drawing A-601.

AD-1, ITEM 32:

In reference to **Sheet A-601 - Schedules**, door head & jamb details 6, 7, 8 & 9 were added to the sheet. See clouded area on attached Supplemental Drawing A-601.

AD-1, ITEM 33:

In reference to **Sheet E-601**, revise Keyed Note #6 to read "CONTACT MIKE SAXTON WITH LES TO COORDINATE NEW SECONDARY CONDUCTORS FROM THE SERVICE TRANSFORMER TO THE CT CABINET TO INCREASE CAPACITY TO 400 AMPS."

END AD-1

**WAVERLY LAWSON PARK
PHASE II IMPROVEMENTS
WAVERLY, NEBRASKA**

SECTION 224000 - PLUMBING FIXTURES

PART 1 - GENERAL

1.1 RELATED DOCUMENTS

- A. Drawings and general provisions of the Contract, including General and Supplementary Conditions and Division 01 Specification Sections, apply to this Section.

1.2 SUMMARY

- A. This Section includes conventional plumbing fixtures and related components.
- B. Related Sections include the following:
 - 1. Section 221119 "Domestic Water Piping Specialties" for backflow preventers, floor drains, and specialty fixtures not included in this Section.
 - 2. Section 224713 "Drinking Fountains."

1.3 DEFINITIONS

- A. Accessible Fixture: Plumbing fixture that can be approached, entered, and used by people with disabilities.
- B. Cast Polymer: Cast-filled-polymer-plastic material. This material includes cultured-marble and solid-surface materials.
- C. Cultured Marble: Cast-filled-polymer-plastic material with surface coating.
- D. Fitting: Device that controls the flow of water into or out of the plumbing fixture. Fittings specified in this Section include supplies and stops, faucets and spouts, shower heads and tub spouts, drains and tailpieces, and traps and waste pipes. Piping and general-duty valves are included where indicated.
- E. Solid Surface: Nonporous, homogeneous, cast-polymer-plastic material with heat-, impact-, scratch-, and stain-resistance qualities.

1.4 SUBMITTALS

- A. Product Data: For each type of plumbing fixture indicated. Include selected fixture and trim, fittings, accessories, appliances, appurtenances, equipment, and supports. Indicate materials and finishes, dimensions, construction details, and flow-control rates. Include wiring diagrams for power, signal, and control wiring.

**WAVERLY LAWSON PARK
PHASE II IMPROVEMENTS
WAVERLY, NEBRASKA**

1.5 CLOSEOUT SUBMITTALS

- A. Operation and Maintenance Data: For plumbing fixtures to include in emergency, operation, and maintenance manuals.

1.6 QUALITY ASSURANCE

- A. Source Limitations: Obtain plumbing fixtures, faucets, and other components of each category through one source from a single manufacturer.
 - 1. Exception: If fixtures, faucets, or other components are not available from a single manufacturer, obtain similar products from other manufacturers specified for that category.
- B. Electrical Components, Devices, and Accessories: Listed and labeled as defined in NFPA 70, Article 100, by a testing agency acceptable to authorities having jurisdiction, and marked for intended use.
- C. Regulatory Requirements: Comply with requirements in ICC A117.1, "Accessible and Usable Buildings and Facilities"; Public Law 90-480, "Architectural Barriers Act"; and Public Law 101-336, "Americans with Disabilities Act"; for plumbing fixtures for people with disabilities.
- D. Regulatory Requirements: Comply with requirements in Public Law 102-486, "Energy Policy Act," about water flow and consumption rates for plumbing fixtures.
- E. NSF Standard: Comply with NSF 61, "Drinking Water System Components--Health Effects," for fixture materials that will be in contact with potable water.
- F. Select combinations of fixtures and trim, faucets, fittings, and other components that are compatible.

PART 2 - PRODUCTS

2.1 See drawings for plumbing fixture schedule.

2.2 VITREOUS CHINA AND ENAMELED CAST IRON FIXTURES

- A. Basis of Design Product: Subject to compliance with requirements, provide the product indicated on Drawings or a comparable product by one of the following:
 - 1. American Standard.
 - 2. Kohler.

**WAVERLY LAWSON PARK
PHASE II IMPROVEMENTS
WAVERLY, NEBRASKA**

2.3 FLUSH VALVES

- A. Basis of Design Product: Subject to compliance with requirements, provide the product indicated on Drawings or a comparable product by one of the following:
1. Moen Commercial.
 2. Sloan.

2.4 STAINLESS STEEL SINKS

- A. Basis of Design Product: Subject to compliance with requirements, provide the product indicated on Drawings or a comparable product by one of the following:
1. Elkay.
 2. Just.

2.5 MOP BASINS

- A. Basis of Design Product: Subject to compliance with requirements, provide the product indicated on Drawings or a comparable product by one of the following:
1. Fiat.
 2. Mustee.

2.6 MANUAL FAUCETS

- A. Basis of Design Product: Subject to compliance with requirements, provide the product indicated on Drawings or a comparable product by one of the following:
1. American Standard.
 2. Chicago Faucets.
 3. Kohler.
 4. Moen Commercial.

PART 3 - EXECUTION

3.1 EXAMINATION

- A. Examine roughing-in of water supply and sanitary drainage and vent piping systems to verify actual locations of piping connections before plumbing fixture installation.
- B. Examine cabinets, counters, floors, and walls for suitable conditions where fixtures will be installed.
- C. Proceed with installation only after unsatisfactory conditions have been corrected.

**WAVERLY LAWSON PARK
PHASE II IMPROVEMENTS
WAVERLY, NEBRASKA**

3.2 INSTALLATION

- A. Assemble plumbing fixtures, trim, fittings, and other components according to manufacturers' written instructions.
- B. Install off-floor supports, affixed to building substrate, for wall-mounting fixtures.
 - 1. Use carrier supports with waste fitting and seal for back-outlet fixtures.
 - 2. Use carrier supports without waste fitting for fixtures with tubular waste piping.
 - 3. Use chair-type carrier supports with rectangular steel uprights for accessible fixtures.
- C. Install back-outlet, wall-mounting fixtures onto waste fitting seals and attach to supports.
- D. Install floor-mounting fixtures on closet flanges or other attachments to piping or building substrate.
- E. Install wall-mounting fixtures with tubular waste piping attached to supports.
- F. Install counter-mounting fixtures in and attached to casework.
- G. Install fixtures level and plumb according to roughing-in drawings.
- H. Install water-supply piping with stop on each supply to each fixture to be connected to water distribution piping. Attach supplies to supports or substrate within pipe spaces behind fixtures. Install stops in locations where they can be easily reached for operation.
 - 1. Exception: Use ball valves if supply stops are not specified with fixture. Valves are specified in Section 220523 "General-Duty Valves for Plumbing Piping."
- I. Install trap and tubular waste piping on drain outlet of each fixture to be directly connected to sanitary drainage system.
- J. Install tubular waste piping on drain outlet of each fixture to be indirectly connected to drainage system.
- K. Install flushometer valves for accessible water closets and urinals with handle mounted on wide side of compartment. Install other actuators in locations that are easy for people with disabilities to reach.
- L. Install toilet seats on water closets.
- M. Install faucet-spout fittings with specified flow rates and patterns in faucet spouts if faucets are not available with required rates and patterns. Include adapters if required.
- N. Install water-supply flow-control fittings with specified flow rates in fixture supplies at stop valves.

**WAVERLY LAWSON PARK
PHASE II IMPROVEMENTS
WAVERLY, NEBRASKA**

- O. Install faucet flow-control fittings with specified flow rates and patterns in faucet spouts if faucets are not available with required rates and patterns. Include adapters if required.
- P. Install traps on fixture outlets.
 - 1. Exception: Omit trap on fixtures with integral traps.
 - 2. Exception: Omit trap on indirect wastes, unless otherwise indicated.
- Q. Install escutcheons at piping wall and ceiling penetrations in exposed, finished locations and within cabinets and millwork. Use deep-pattern escutcheons if required to conceal protruding fittings. Escutcheons are specified in Section 220518 "Escutcheons for Plumbing Piping."
- R. Set service basins in leveling bed of cement grout. Grout is specified in Section 220500 "Common Work Results for Plumbing."
- S. Seal joints between fixtures and walls, floors, and countertops using sanitary-type, one-part, mildew-resistant silicone sealant. Match sealant color to fixture color. Sealants are specified in Section 079200 "Joint Sealants."

3.3 CONNECTIONS

- A. Piping installation requirements are specified in other Division 22 Sections. Drawings indicate general arrangement of piping, fittings, and specialties.
- B. Connect fixtures with water supplies, stops, and risers, and with traps, soil, waste, and vent piping. Use size fittings required to match fixtures.
- C. Ground equipment according to Section 260526 "Grounding and Bonding for Electrical Systems."
- D. Connect wiring according to Section 260519 "Low-Voltage Electrical Power Conductors and Cables."

3.4 FIELD QUALITY CONTROL

- A. Verify that installed plumbing fixtures are categories and types specified for locations where installed.
- B. Check that plumbing fixtures are complete with trim, faucets, fittings, and other specified components.
- C. Inspect installed plumbing fixtures for damage. Replace damaged fixtures and components.
- D. Test installed fixtures after water systems are pressurized for proper operation. Replace malfunctioning fixtures and components, then retest. Repeat procedure until units operate properly.

**WAVERLY LAWSON PARK
PHASE II IMPROVEMENTS
WAVERLY, NEBRASKA**

3.5 ADJUSTING

- A. Operate and adjust faucets and controls. Replace damaged and malfunctioning fixtures, fittings, and controls.
- B. Operate and adjust controls. Replace damaged and malfunctioning units and controls.
- C. Adjust water pressure at faucets and flushometer valves to produce proper flow and stream.
- D. Replace washers and seals of leaking and dripping faucets and stops.

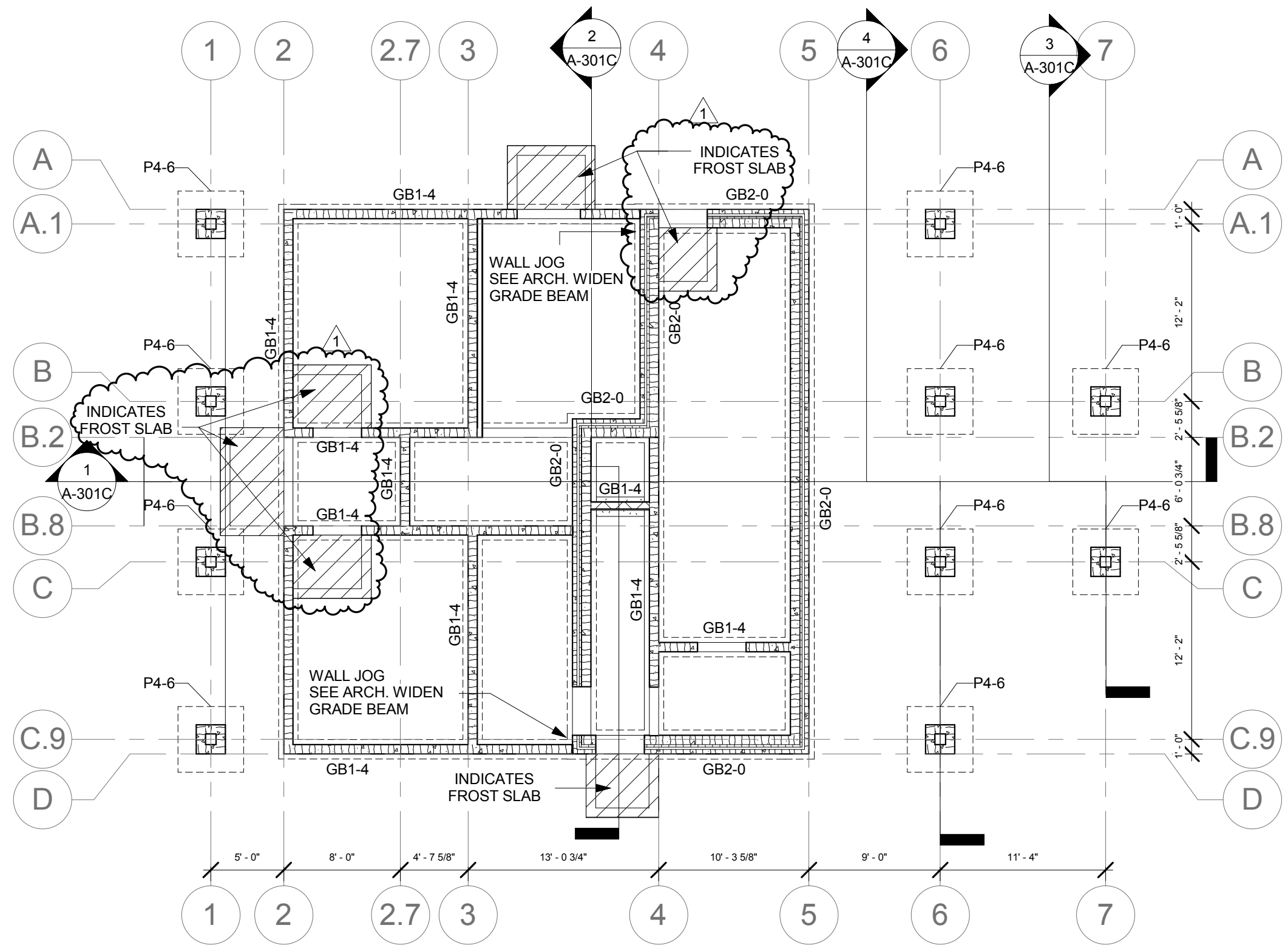
3.6 CLEANING

- A. Clean fixtures, faucets, and other fittings with manufacturers' recommended cleaning methods and materials. Do the following:
 - 1. Remove faucet spouts and strainers, remove sediment and debris, and reinstall strainers and spouts.
 - 2. Remove sediment and debris from drains.
- B. After completing installation of exposed, factory-finished fixtures, faucets, and fittings, inspect exposed finishes and repair damaged finishes.

3.7 PROTECTION

- A. Provide protective covering for installed fixtures and fittings.
- B. Do not allow use of plumbing fixtures for temporary facilities unless approved in writing by Owner.

END OF SECTION 224000



NOTES

FINISH FLOOR ELEVATION: 100'-0" = 1116.70'
TOP OF PADS: 98'-8"
TOP OF GRADE BEAM: 98'-8"
BOTTOM OF GRADE BEAM: 96'-0"

SLAB CONSTRUCTION:

4" CONCRETE SLAB ON GRADE REINF. W/
6X6, 10-10 WWM OVER 4" LAYER OF RE-
CYCLED, CRUSHED CONCRETE ON 10 MIL
VAPOR BARRIER.

SEE DETAIL 8/S-501 FOR SOILS &
FOUNDATION INFORMATION

CLIENT INFORMATION
Waverly Lawson Park
Phase II Improvements

PROJECT INFORMATION
Concessions Building

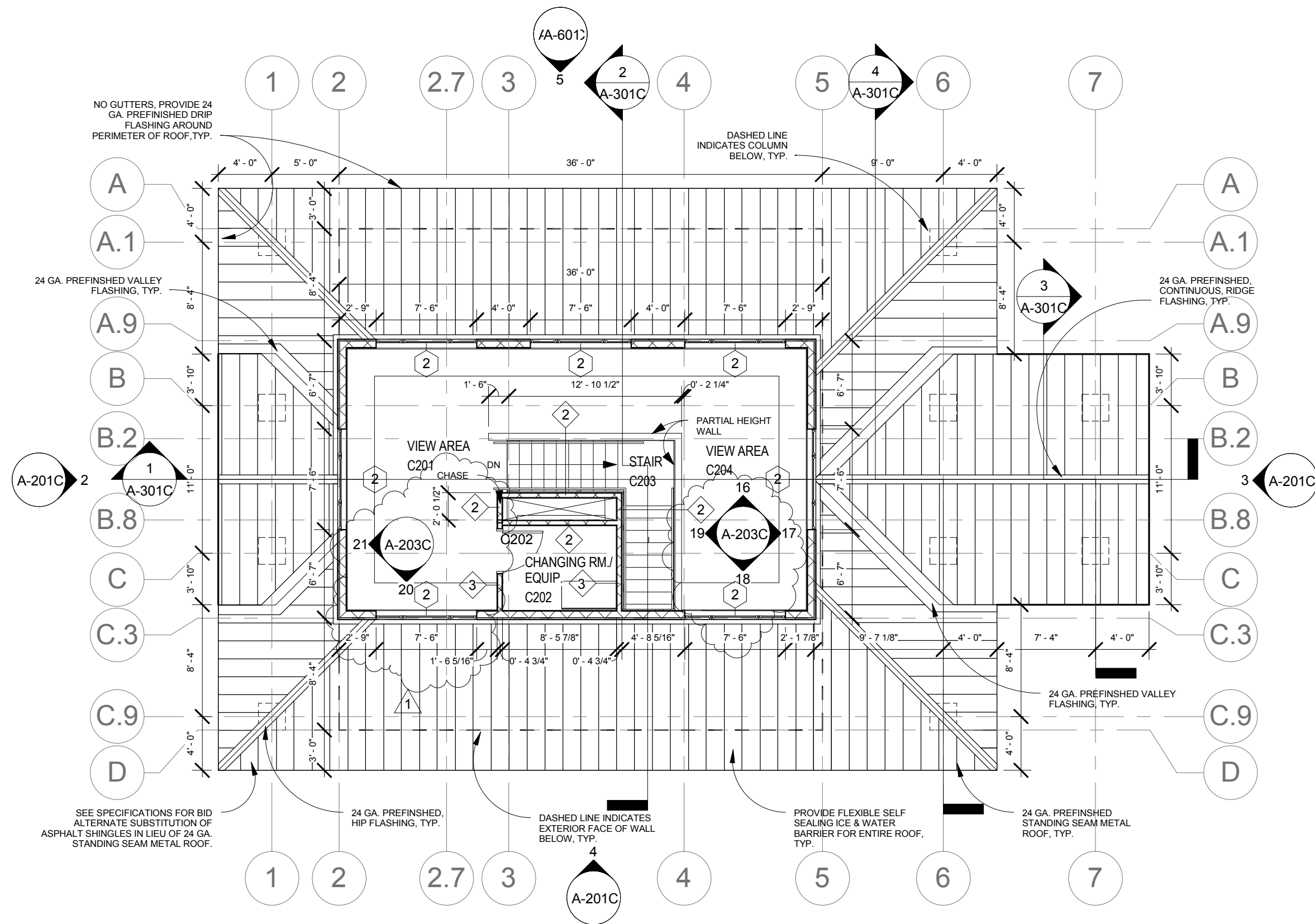
Waverly, Ne

Issue Date:	09/10/14
Job #	14-0166
Drawn by:	RCL

Copyright © Davis Design All Rights Reserved
Drawing Title
**Structural Framing
Plans**

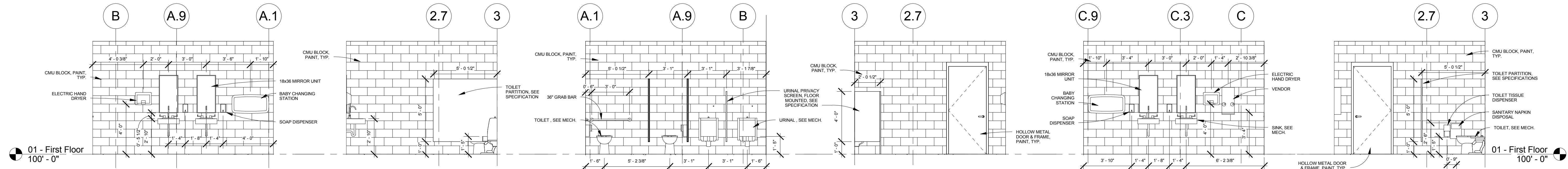
From Sheet	S-101C	for CA use:
Drawing #	S-101C.1	

① Foundation Plan
1/8" = 1'-0"

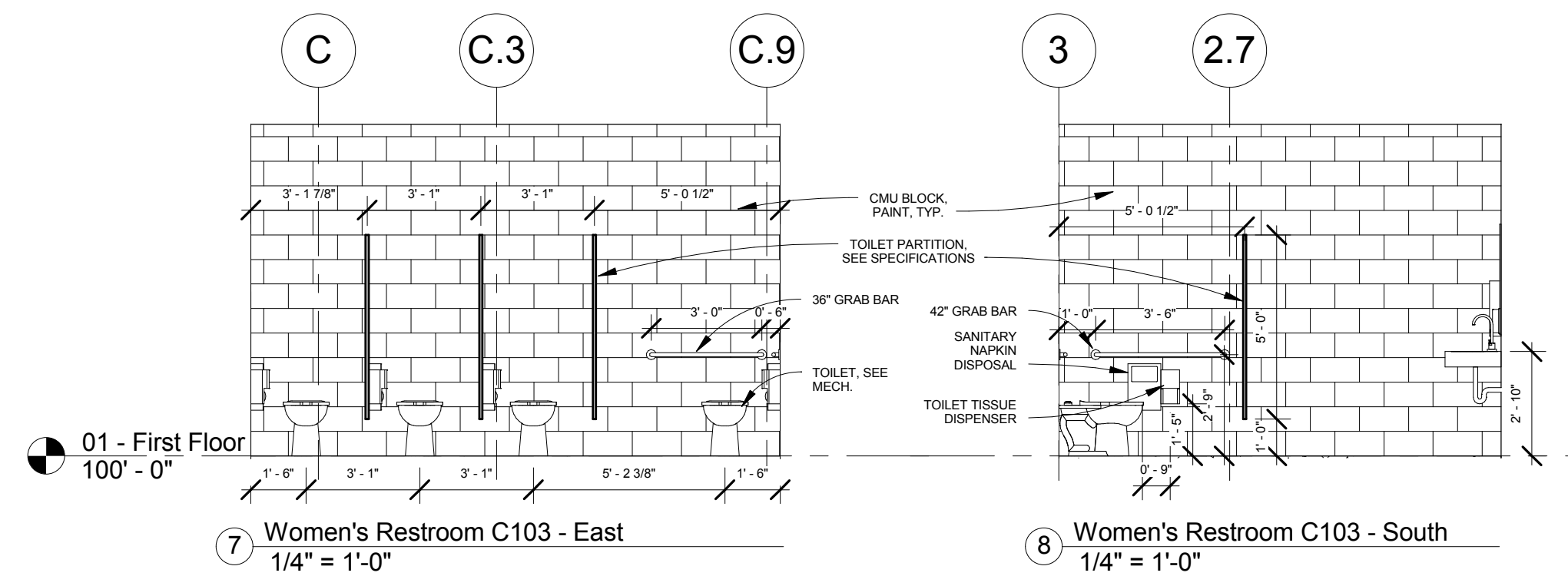


1 Second Floor Plan
1/8" = 1'-0"

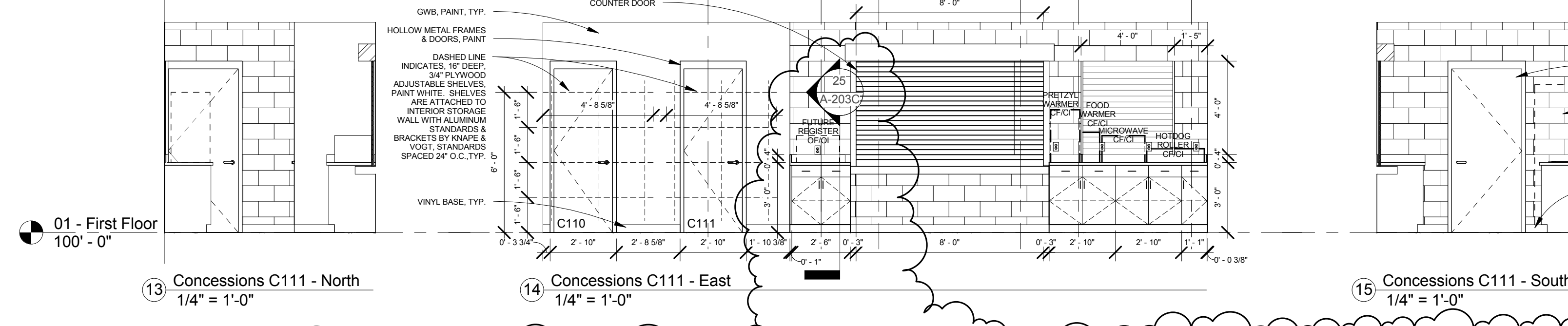
CLIENT INFORMATION	
Waverly Lawson Park Phase II Improvements	
PROJECT INFORMATION	
Concessions Building	
Waverly, Ne	
Issue Date:	09/10/14
Job #	14-0166
Drawn by:	RCL
Copyright © Davis Design All Rights Reserved	
Drawing Title	
Second Floor Plans & Details	
From Sheet	for CA use:
A-102C	
Drawing #	
A-102C.1	



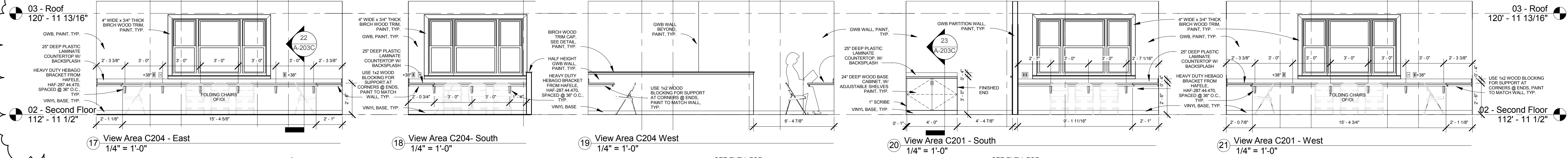
1 Men's Restroom C101-West 1/4" = 1'-0"
 2 Men's Restroom C101-North 1/4" = 1'-0"
 3 Men's Restroom C101-East 1/4" = 1'-0"
 4 Men's Restroom C101-South 1/4" = 1'-0"
 5 Women's Restroom C103 - West 1/4" = 1'-0"
 6 Women's Restroom C103 - West 1/4" = 1'-0"



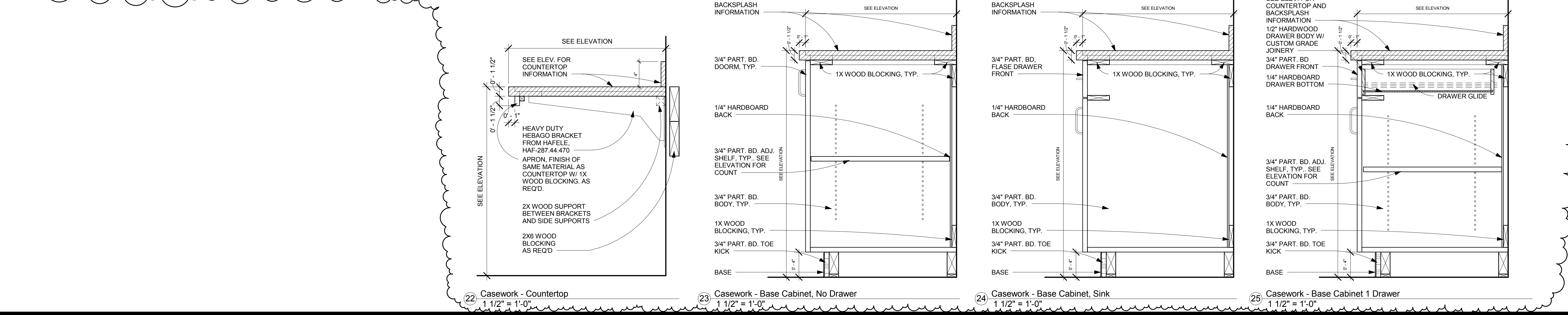
7 Women's Restroom C103 - East 1/4" = 1'-0"
 8 Women's Restroom C103 - South 1/4" = 1'-0"
 9 Alcove C105 - West 1/4" = 1'-0"
 10 Alcove C105 - South 1/4" = 1'-0"



13 Concessions C111 - North 1/4" = 1'-0"
 14 Concessions C111 - East 1/4" = 1'-0"
 15 Concessions C111 - South 1/4" = 1'-0"
 16 View Area C201 & C204 - North 1/4" = 1'-0"



17 View Area C204 - East 1/4" = 1'-0"
 18 View Area C204 - South 1/4" = 1'-0"
 19 View Area C204 West 1/4" = 1'-0"
 20 View Area C201 - South 1/4" = 1'-0"
 21 View Area C201 - West 1/4" = 1'-0"



22 Casework - Countertop 1 1/2" = 1'-0"
 23 Casework - Base Cabinet, No Drawer 1 1/2" = 1'-0"
 24 Casework - Base Cabinet, Sink 1 1/2" = 1'-0"
 25 Casework - Base Cabinet 1 Drawer 1 1/2" = 1'-0"

Lincoln
 1221 N Street, Suite 600
 Lincoln NE 68508
 Phone 402-476-9700
 Fax 402-476-9722

Vermilion
 15 East Main, Suite 201
 Vermilion SD 57069
 Phone 605-624-1061

DAVIS
 DESIGN

benesch
 engineers • scientists • planners

This document was originally signed and sealed by:
 ARCHITECT
 LEROY P. SVATORA
 A-1806
 ON: 08-26-2014
 STATE OF NEBRASKA
 This media should not be considered a certified document

CLIENT INFORMATION
Waverly Lawson Park Phase II Improvements

PROJECT INFORMATION
Concessions Building
 Waverly, Ne

JOB # 14-0166
 ISSUE DATE 08/26/2014

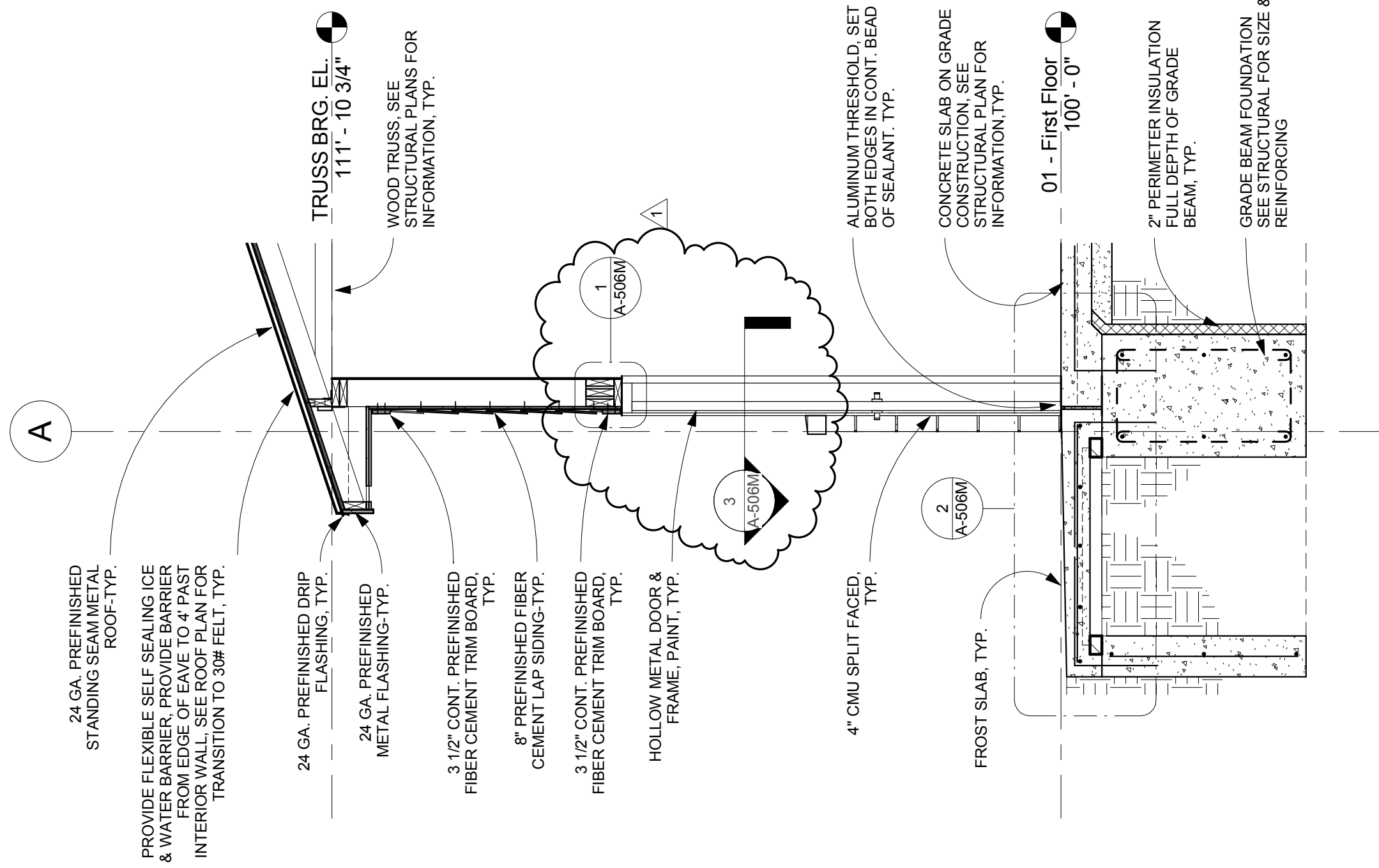
Revisions		
ID	Date	Description
1	9/10/2014	Addendum#1

Checked by LS
 Drawn by RCL
 Davis Design All Rights Reserved

SHEET TITLE
Interior Elevations

SHEET NUMBER

A-203C



6 Wall Section
1/2" = 1'-0"

CLIENT INFORMATION
Waverly Lawson Park
Phase II Improvements

PROJECT INFORMATION
Maintenance Building

Waverly, Ne

Issue Date:	09/10/14
Job #	14-0166
Drawn by:	RCL

Copyright © Davis Design All Rights Reserved

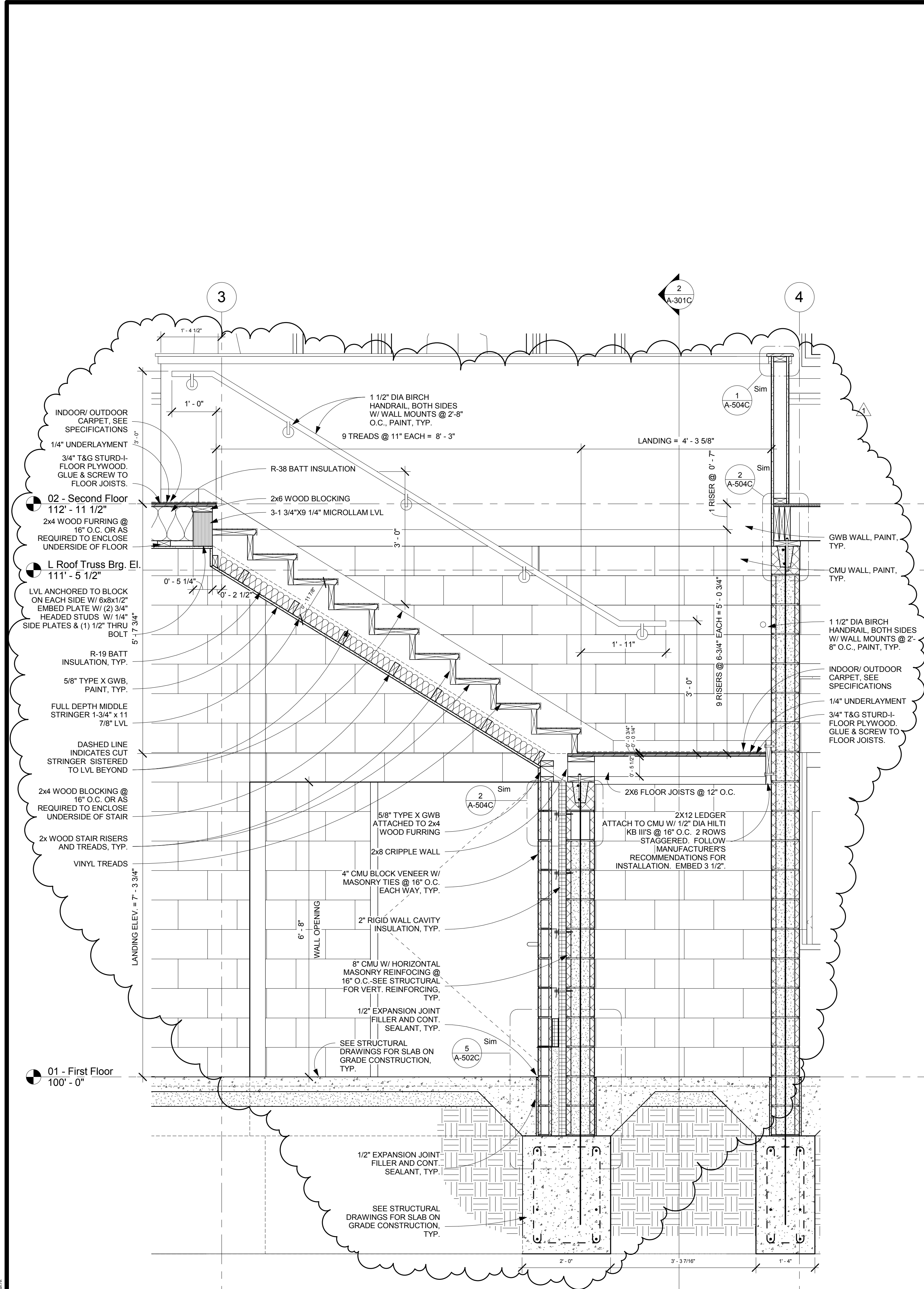
Drawing Title
Building Sections

From Sheet A-302M	for CA use:
Drawing # A-302M.1	

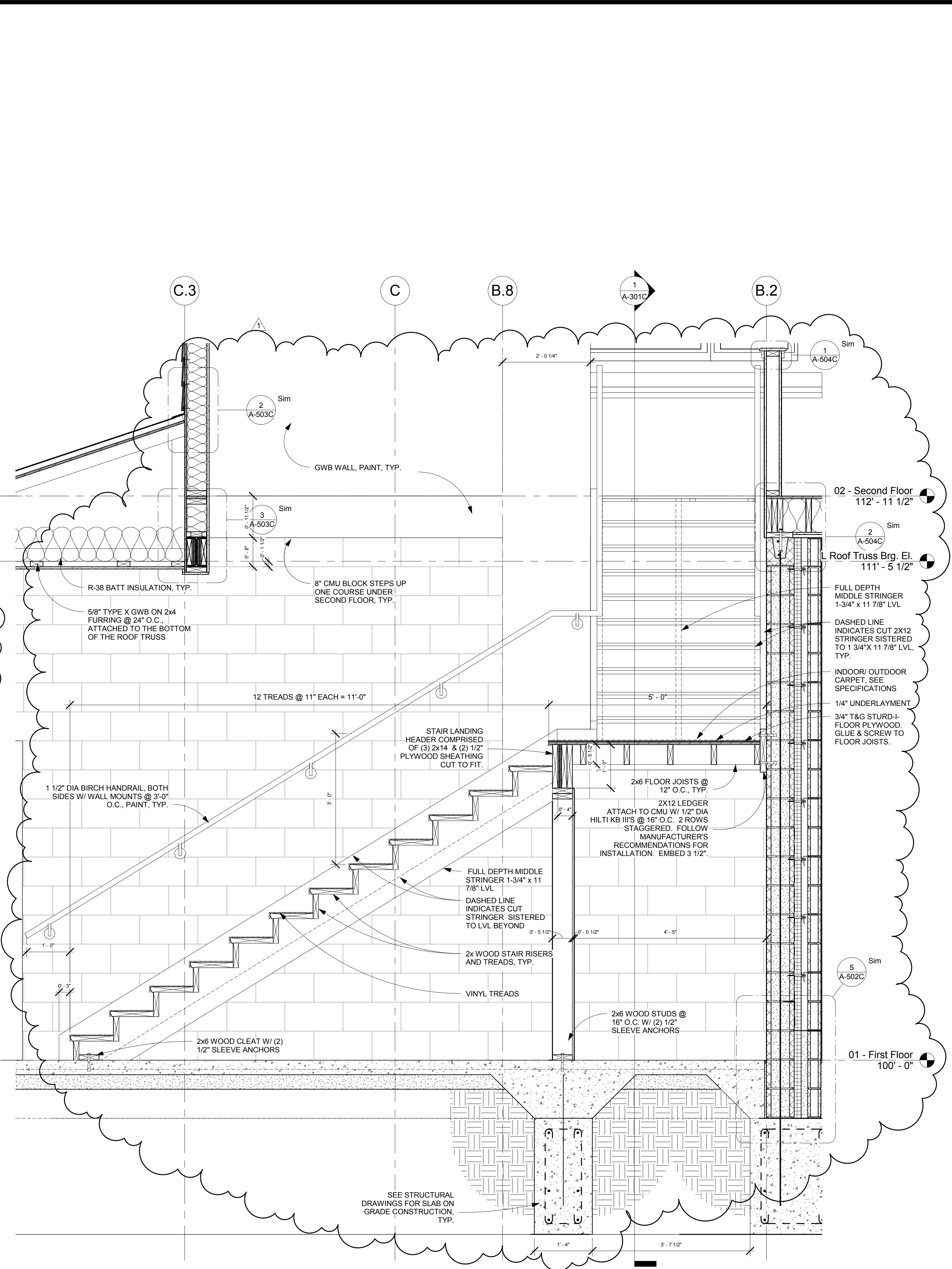
Lincoln
1221 N Street, Suite 600
Lincoln NE 68508
Phone 402-476-9700
Fax 402-476-9722

Vermillion
15 East Main, Suite 201
Vermillion SD 57069
Phone 605-624-1081





1 Stair Section
3/4" = 1'-0"



2 Stair Section
3/4" = 1'-0"

Lincoln
1221 N Street, Suite 600
Lincoln, NE 68508
Phone: 402-476-9700
Fax: 402-476-9722

Vermillion
15 East Main, Suite 201
Vermillion, SD 57069
Phone: 605-624-7061

DAVIS
DESIGN

benesch
engineers · scientists · planners

This document was originally signed and sealed by:

 LEROY P. SVATORA
 A-1806
 ON: 08-26-2014
 This media should not be considered a certified document.

CLIENT INFORMATION
Waverly Lawson Park Phase II Improvements

PROJECT INFORMATION
Concessions Building
 Waverly, Ne

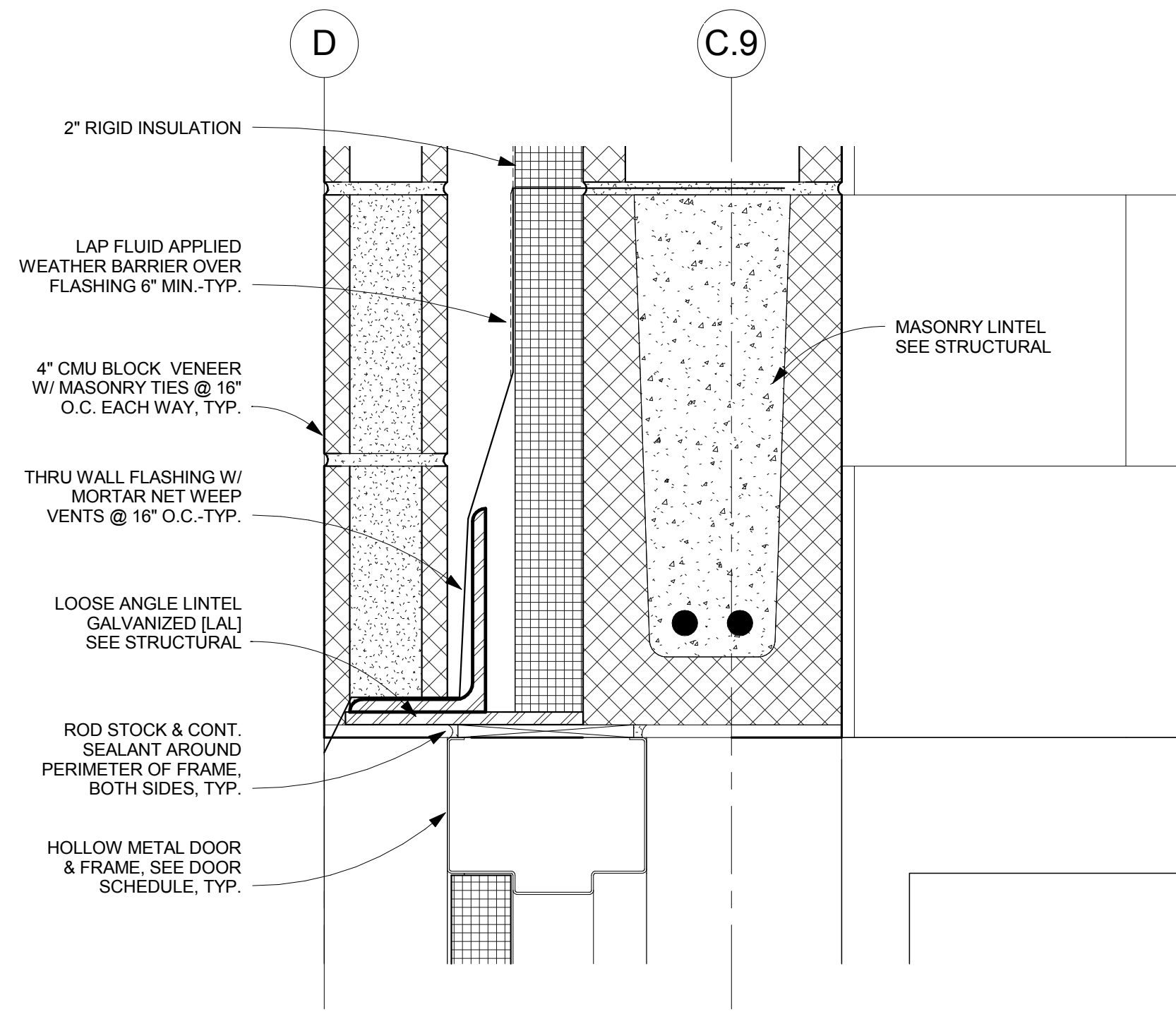
JOB # 14-0166
 ISSUE DATE 08/26/2014

ID	Date	Description
1	9/10/2014	Addendum#1

Checked by: LS
 Drawn by: RCL
 Davis Design All Rights Reserved

SHEET TITLE
Stair/ Wall Sections

SHEET NUMBER
A-405C



2" RIGID INSULATION

LAP FLUID APPLIED WEATHER BARRIER OVER FLASHING 6" MIN.-TYP.

4" CMU BLOCK VENEER W/ MASONRY TIES @ 16" O.C. EACH WAY, TYP.

THRU WALL FLASHING W/ MORTAR NET WEEP VENTS @ 16" O.C.-TYP.

LOOSE ANGLE LINTEL GALVANIZED [LAL] SEE STRUCTURAL

ROD STOCK & CONT. SEALANT AROUND PERIMETER OF FRAME, BOTH SIDES, TYP.

HOLLOW METAL DOOR & FRAME, SEE DOOR SCHEDULE, TYP.

MASONRY LINTEL SEE STRUCTURAL

5 Door Head Detail
3" = 1'-0"

Lincoln
1221 N Street, Suite 600
Lincoln, NE 68508
Phone 402-476-9700
Fax 402-476-9722

Vermillion
15 East Main, Suite 201
Vermillion, SD 57069
Phone 605-624-1081

DAVIS
DESIGN

CLIENT INFORMATION
Waverly Lawson Park
Phase II Improvements

PROJECT INFORMATION
Concessions Building

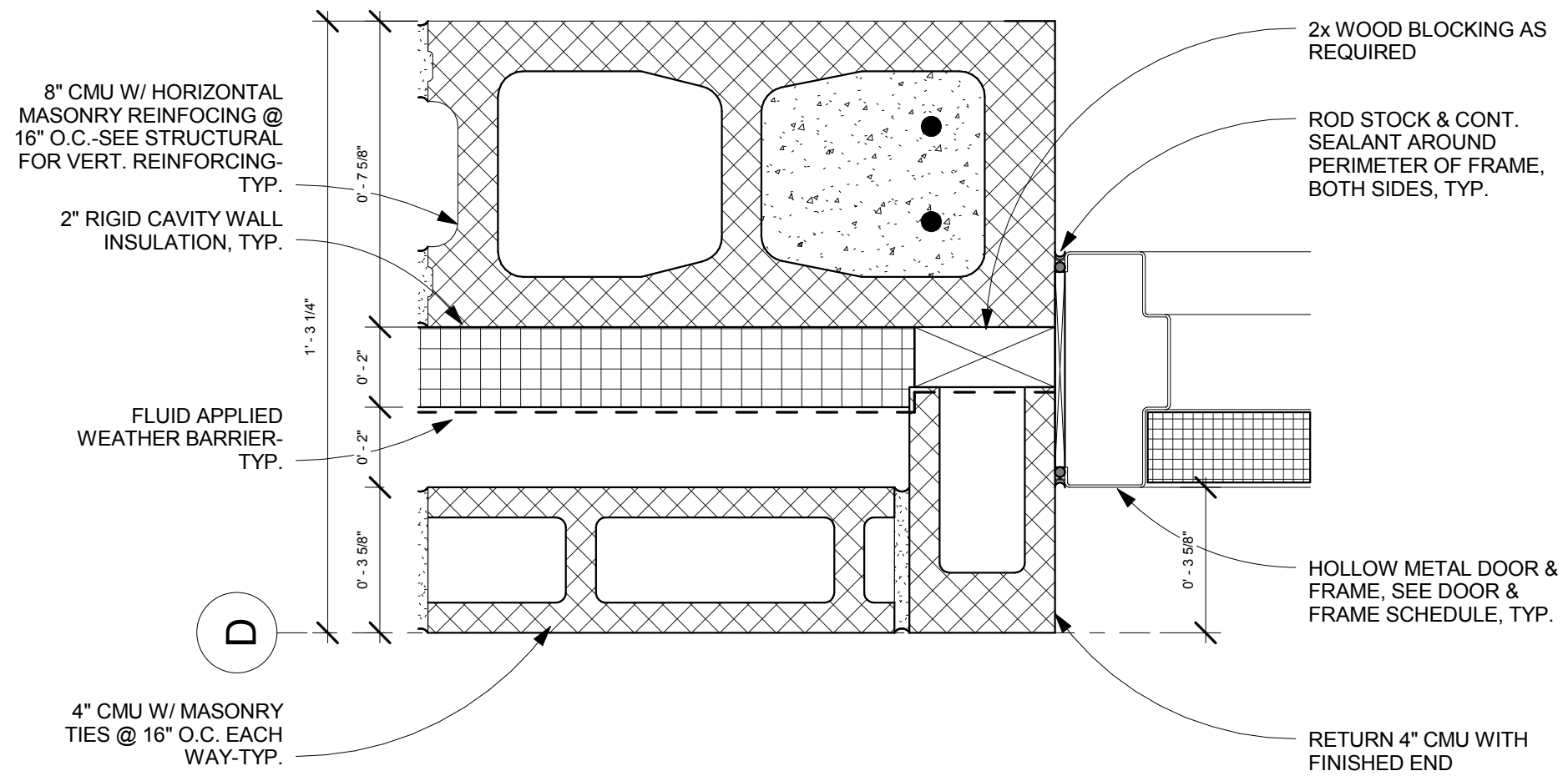
Waverly, Ne

Issue Date:	09/10/14
Job #	14-0166
Drawn by:	RCL

Copyright © Davis Design All Rights Reserved

Drawing Title
Details

From Sheet A-503C	for CA use:
Drawing # A-503C.1	



7 Jamb Detail - Cavity Wall
3" = 1'-0"

Lincoln
1221 N Street, Suite 600
Lincoln, NE 68508
Phone 402-476-9700
Fax 402-476-9722

Vermillion
15 East Main, Suite 201
Vermillion, SD 57069
Phone 605-624-1081

DAVIS
DESIGN

CLIENT INFORMATION
Waverly Lawson Park
Phase II Improvements

PROJECT INFORMATION
Concessions Building

Waverly, Ne

Issue Date:	09/10/14
Job #	14-0166
Drawn by:	RCL

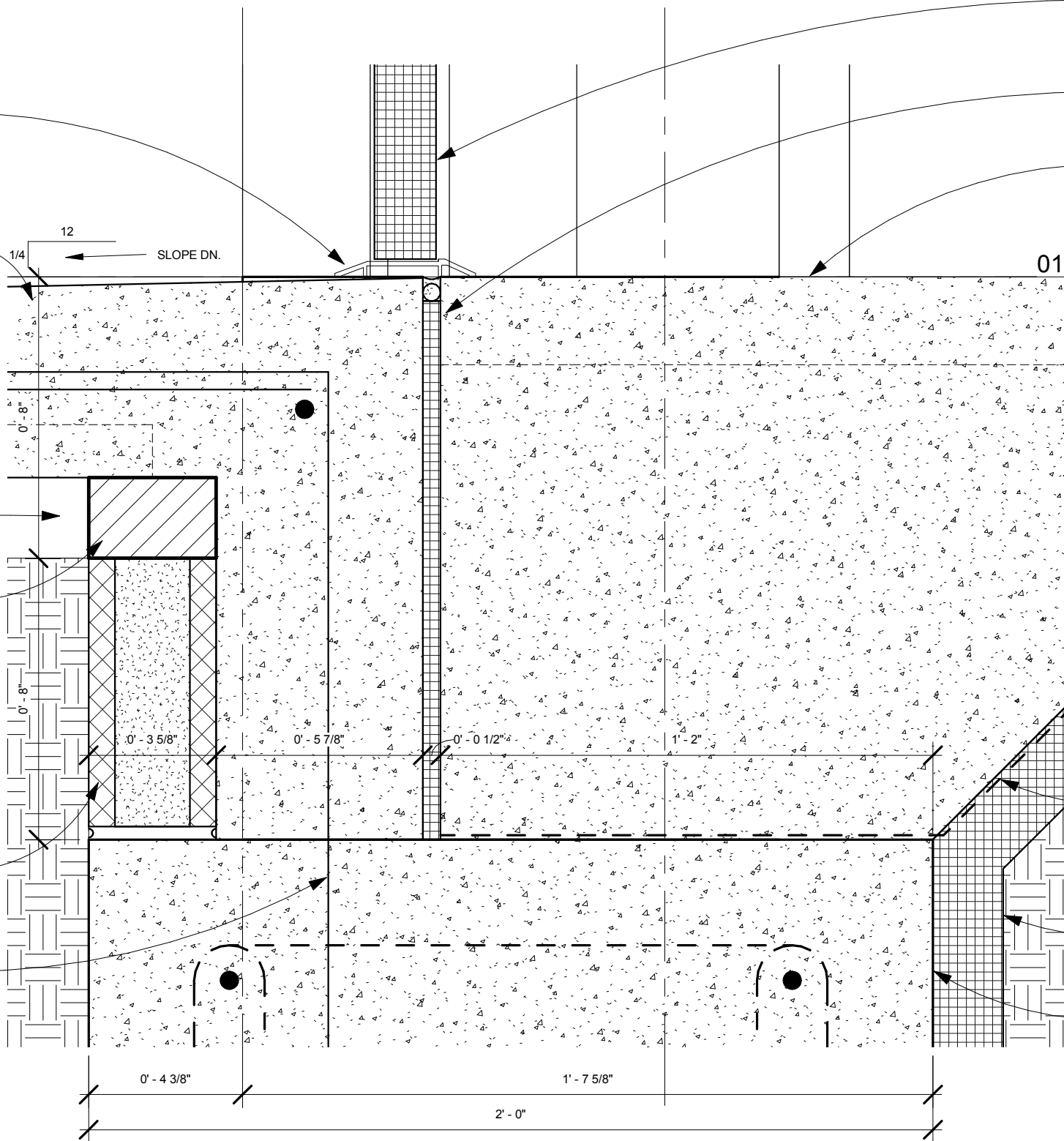
Copyright © Davis Design All Rights Reserved

Drawing Title
Details

From Sheet A-503C	for CA use:
Drawing # A-503C.2	

ALUMINUM THRESHOLD SET BOTH EDGES IN CONT. BED OF SEALANT, SEE HARDWARE SCHEDULE FOR TYPE, TYP.

5 1/2" CONCRETE SLAB W/ #4'S @ 12" O.C. EACH WAY ON 1 1/2", 24 GA., TYPE C METAL DECK (GALVANIZED)



HOLLOW METAL DOOR & FRAME, SEE DOOR & FRAME SCHEDULE, TYP.

1/2" EXPANSION JOINT FILLER AND CONT. SEALANT, TYP.

SEE STRUCTURAL DRAWINGS FOR SLAB ON GRADE CONSTRUCTION, TYP.

01 - First Floor
100' - 0"

2 1/2" AIR SPACE

CONCRETE BRICK

4" CMU BLOCK

2'-6"x2'-0" #4 BENT DOWELS @ 12" O.C.

VAPOR BARRIER AS BOND BREAK, TYP.

2" PERIMETER INSULATION FULL DEPTH OF GRADE BEAM, TYP.

GRADE BEAM
SEE PLAN & SCHEDULE
ALTERNATE LOCATION
OF STIRRUP HOOKS
BETWEEN TOP &
BOTTOM

6 Frost Slab Detail
3" = 1'-0"

Lincoln
1221 N Street, Suite 600
Lincoln, NE 68508
Phone 402-476-9700
Fax 402-476-9722

Vermillion
15 East Main, Suite 201
Vermillion, SD 57069
Phone 605-624-1081

DAVIS
DESIGN

CLIENT INFORMATION

Waverly Lawson Park
Phase II Improvements

PROJECT INFORMATION

Concessions Building

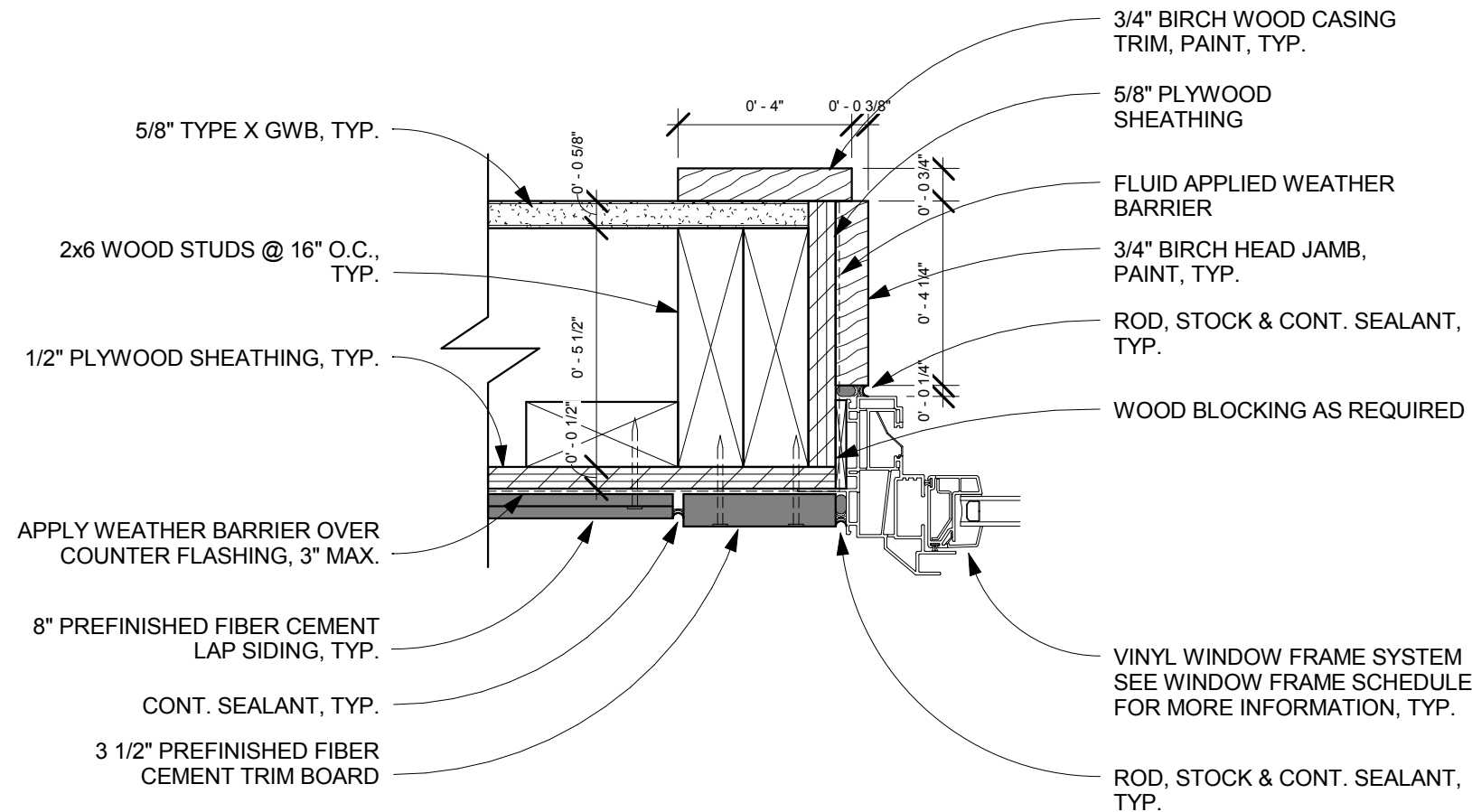
Waverly, Ne

Issue Date:	09/10/14
Job #	14-0166
Drawn by:	RCL

Copyright © Davis Design All Rights Reserved

Drawing Title
Details

From Sheet A-503C	for CA use:
Drawing # A-503C.3	



5 Jamb Detail
3" = 1'-0"

Lincoln
1221 N Street, Suite 600
Lincoln, NE 68508
Phone 402-476-9700
Fax 402-476-9722

Vermillion
15 East Main, Suite 201
Vermillion, SD 57069
Phone 605-624-1081

DAVIS
DESIGN

CLIENT INFORMATION
Waverly Lawson Park
Phase II Improvements

PROJECT INFORMATION
Concessions Building

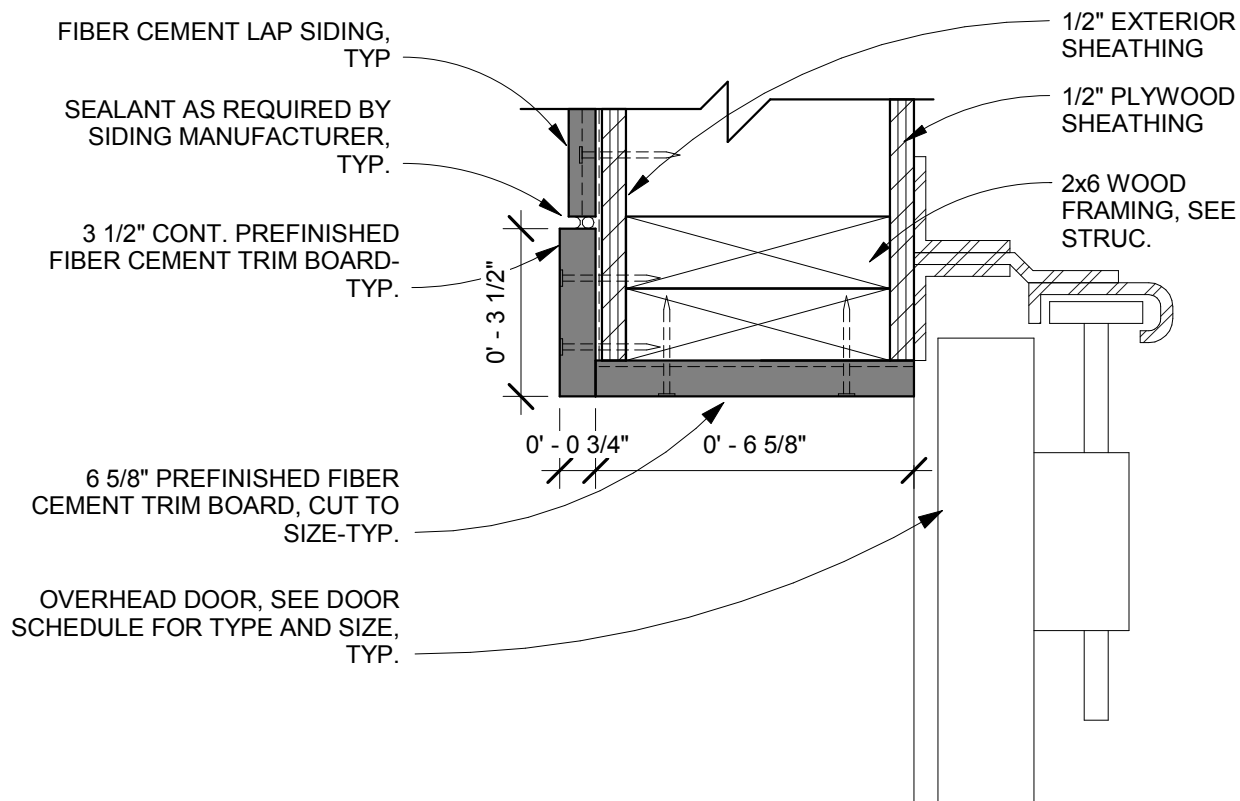
Waverly, Ne

Issue Date:	09/10/14
Job #	14-0166
Drawn by:	RCL

Copyright © Davis Design All Rights Reserved

Drawing Title
Jamb Detail

From Sheet A-504C	for CA use:
Drawing # A-504C.1	



⑥ Jamb Detail - Overhead Door
3" = 1'-0"

Lincoln
1221 N Street, Suite 600
Lincoln, NE 68508
Phone 402-476-9700
Fax 402-476-9722

Vermillion
15 East Main, Suite 201
Vermillion, SD 57069
Phone 605-624-1081



CLIENT INFORMATION
Waverly Lawson Park
Phase II Improvements

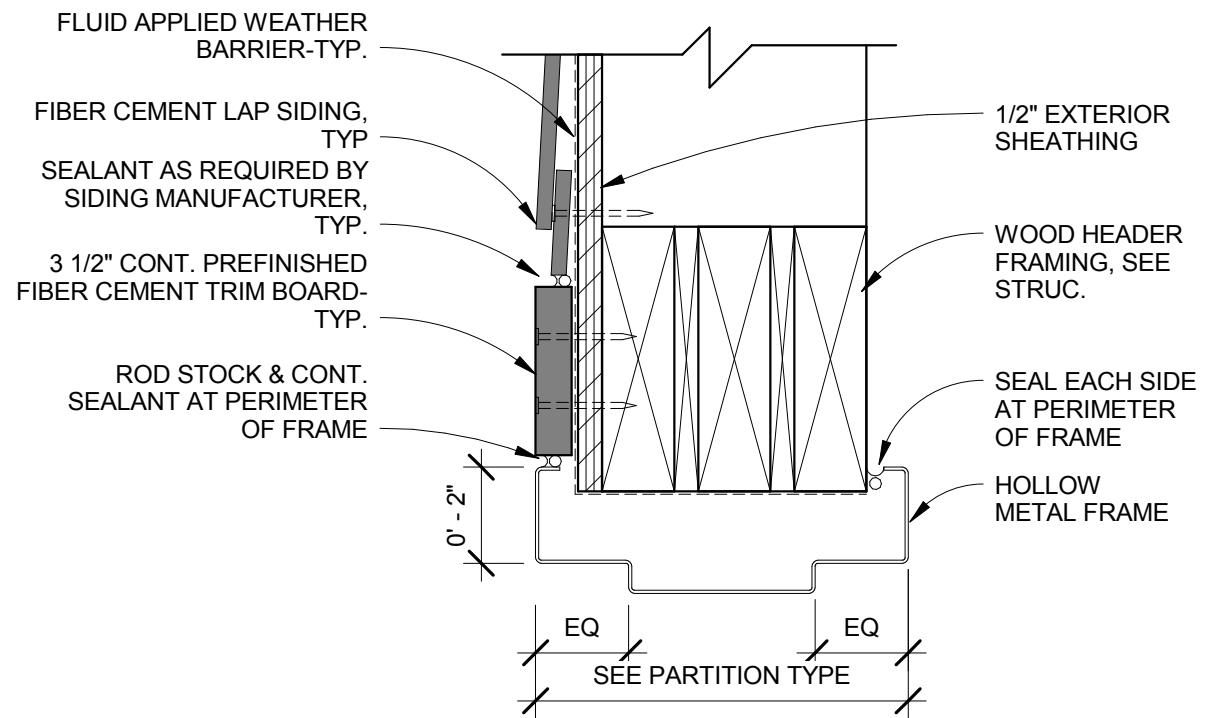
PROJECT INFORMATION
Maintenance Building

Waverly, Ne

Issue Date:	09/10/14
Job #	14-0166
Drawn by:	RCL

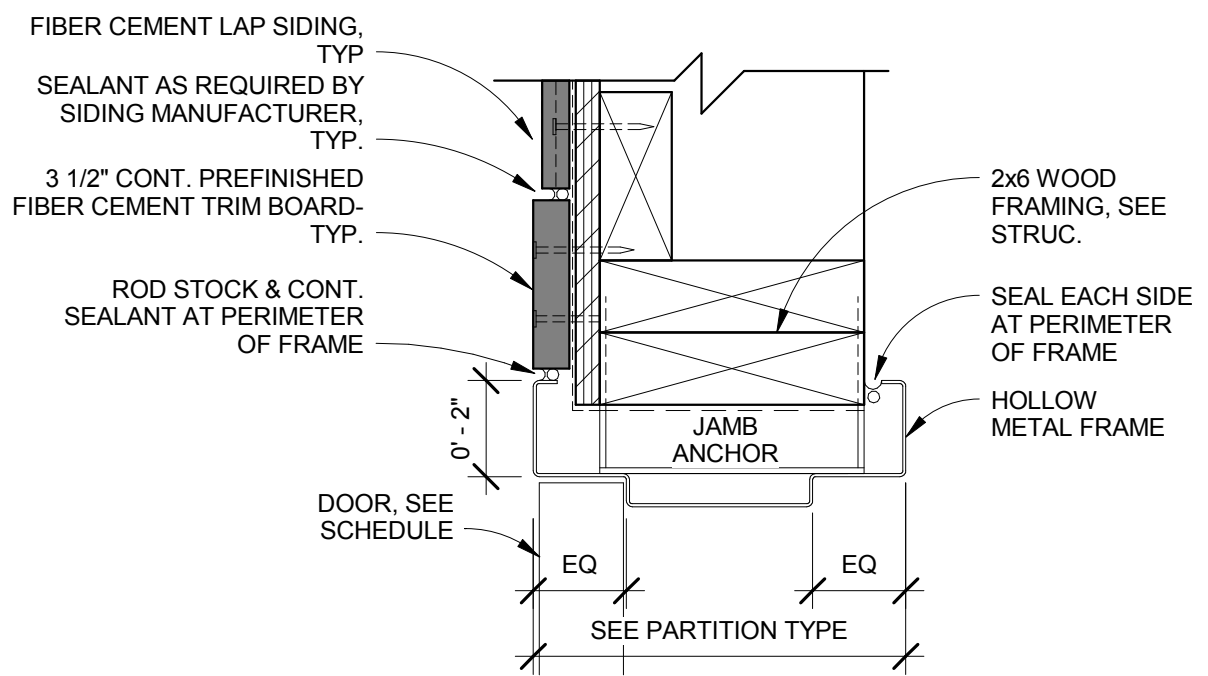
Copyright © Davis Design All Rights Reserved
Drawing Title
Details

From Sheet A-505M	for CA use:
Drawing # A-505M.1	



WHERE DOOR AND FRAME ARE A PART OF A FIRE RATED WALL SYSTEM, MODIFY DETAIL AS REQUIRED TO MEET MANUFACTURER TESTED SYSTEM REQUIREMENTS.

① Hollow Metal Head Detail
3" = 1'-0"



WHERE DOOR AND FRAME ARE A PART OF A FIRE RATED WALL SYSTEM, MODIFY DETAIL AS REQUIRED TO MEET MANUFACTURER TESTED SYSTEM REQUIREMENTS.

③ Hollow Metal Jamb Detail
3" = 1'-0"

CLIENT INFORMATION
Waverly Lawson Park
Phase II Improvements

PROJECT INFORMATION
Maintenance Building

Waverly, Ne

Issue Date:	09/10/14
Job #	14-0166
Drawn by:	RCL

Copyright © Davis Design All Rights Reserved

Drawing Title
Details

From Sheet A-506	for CA use:
Drawing # A-506M.1	

DOOR & FRAME SCHEDULE														
DOOR NUMBER	PAIR	DOOR					FRAME							COMMENTS
		WIDTH	HEIGHT	THICKNESS	TYPE	ELEV.	FINISH	FIRE RATING	ELEV.	MATERIAL	FINISH	JAMB	HEAD	
C101		3'-0"	7'-0"	0'-1 3/4"	HM-1	A	SGE		HMF-1	14 GA.	SGE	7/ A-601	6/ A-601	HW-8
C103		3'-0"	7'-0"	0'-1 3/4"	HM-1	A	SGE		HMF-1	14 GA.	SGE	7/ A-601	6/ A-601	HW-8
C104		4'-0"	7'-0"	0'-1 3/4"	HM-1	A	SGE		HMF-1	14 GA.	SGE	7/ A-601	6/ A-601	HW-1
C107		3'-0"	7'-0"	0'-1 3/4"	HM-1	A	SGE		HMF-1	16 GA.	SGE	7/ A-503C	5/ A-503C	HW-2
C109		3'-0"	7'-0"	0'-1 3/4"	HM-1	A	SGE		HMF-1	14 GA.	SGE	7/ A-503C	5/ A-503C	HW-3
C110		2'-6"	7'-0"	0'-1 3/4"	HM-1	A	SGE		HMF-1	16 GA.	SGE	9/ A-601	8/ A-601	HW-4
C111		2'-6"	7'-0"	0'-1 3/4"	HM-1	A	SGE		HMF-1	16 GA.	SGE	9/ A-601	8/ A-601	HW-4
C112A		3'-0"	7'-0"	0'-1 3/4"	HM-1	A	SGE		HMF-1	14 GA.	SGE	7/ A-503C	5/ A-503C	HW-5
C112B	COUNTER DOOR	8'-0"	4'-6"	0'-0 1/2"	SP-2	D	SS NO.4			SS	NO. 4	6/ A-502C	3/ A-502C	
C113A		3'-0"	7'-0"	0'-1 3/4"	HM-1	A	SGE		HMF-1	16 GA.	SGE	7/ A-601	6/ A-601	HW-6
C113B		3'-0"	7'-0"	0'-1 3/4"	HM-1	A	SGE		HMF-1	16 GA.	SGE	7/ A-601	6/ A-601	HW-7
C202		3'-0"	7'-0"	0'-1 3/4"	HM-1	A	SGE		HMF-1	16 GA.	SGE	9/ A-601	8/ A-601	HW-2
M101A	OVERHEAD DOOR	9'-0"	10'-0"	0'-2"	SP-1	B	SGE				6/ A-505M	4/ A-505M		
M101B		3'-0"	7'-0"	0'-1 3/4"	HM-1	A	SGE		HMF-1	14 GA.	SGE	3/ A-506M	1/ A-506M	HW-3
M102A		3'-0"	7'-0"	0'-1 3/4"	HM-1	A	SGE		HMF-1	14 GA.	SGE	3/ A-506M	1/ A-506M	HW-7
M102B		3'-0"	7'-0"	0'-1 3/4"	HM-1	A	SGE		HMF-1	14 GA.	SGE	3/ A-506M	1/ A-506M	HW-3
M102C	OVERHEAD DOOR	16'-0"	10'-0"	0'-2"	SP-1	C	SGE				6/ A-505M	4/ A-505M		

DOOR TYPE SCHEDULE							
SWINGING DOOR TYPES							
TYPE	CONSTRUCTION	THICKNESS	FACE MATERIAL	FIRE RATING	FINISH	SPECIAL REQ'TS	SPEC. SECT.
HM-1	HOLLOW MET. FLUSH DR.	1 3/4"	16 GA. STEEL	NONE	SGE	INTERIOR DOOR	081113
HM-3	HOLLOW MET. FLUSH DR.-INSULATED	1 3/4"	14 GA. STEEL	NONE	SGE	EXTERIOR DOOR	081113
SPECIAL DOOR TYPES							
TYPE	CONSTRUCTION	THICKNESS	FACE MATERIAL	FIRE RATING	FINISH	SPECIAL REQ'TS	SPEC. SECT.
SP-1	OVERHEAD SECTIONAL DOOR	2"	16 GA. STEEL	NONE	SGE		083613
SP-2	ROLLING COUNTER DOOR	1 1/4"	STAINLESS STEEL	NONE	NO. 4	POLISHED DIRECTIONAL SATIN	083323

APPROVED HARDWARE MANUFACTURERS:

Continuous Gear Hinges
Locks
Closers
Flatware & Waal Stops
Overhead Stops
Threshold & Weatherstrip

McKinney, Pemko
Sargent, Corbin Russwin
Sargent, Corbin Russwin, Norton
Rockwood, Hiawatha
Sargent, Rixson, Rockwood
Pemko, Reese, Zero

HARDWARE SCHEDULE:

- MK - McKinney
- SA - Sargent
- RO - Rockwood
- PE - Pemko

HW-1
Doors: C104
Description: Exterior Hollow Metal Door

1	Continuous Hinge	MCK-14HD 83"	CL	MK
1	Classroom Lock	DG1 8237 LNL	US26D	SA
1	Door Closer	351 CPSH	EN	SA
1	Kick Plate	K1050 10" x 2" LDW 4BE CSK	US32D	RO
1	Threshold	171A	PE	PE
1	Gasketing	294AV TKSP8	PE	PE
1	Sweep	345CNB	PE	PE
1	Latch Protector	321	US32D	RO

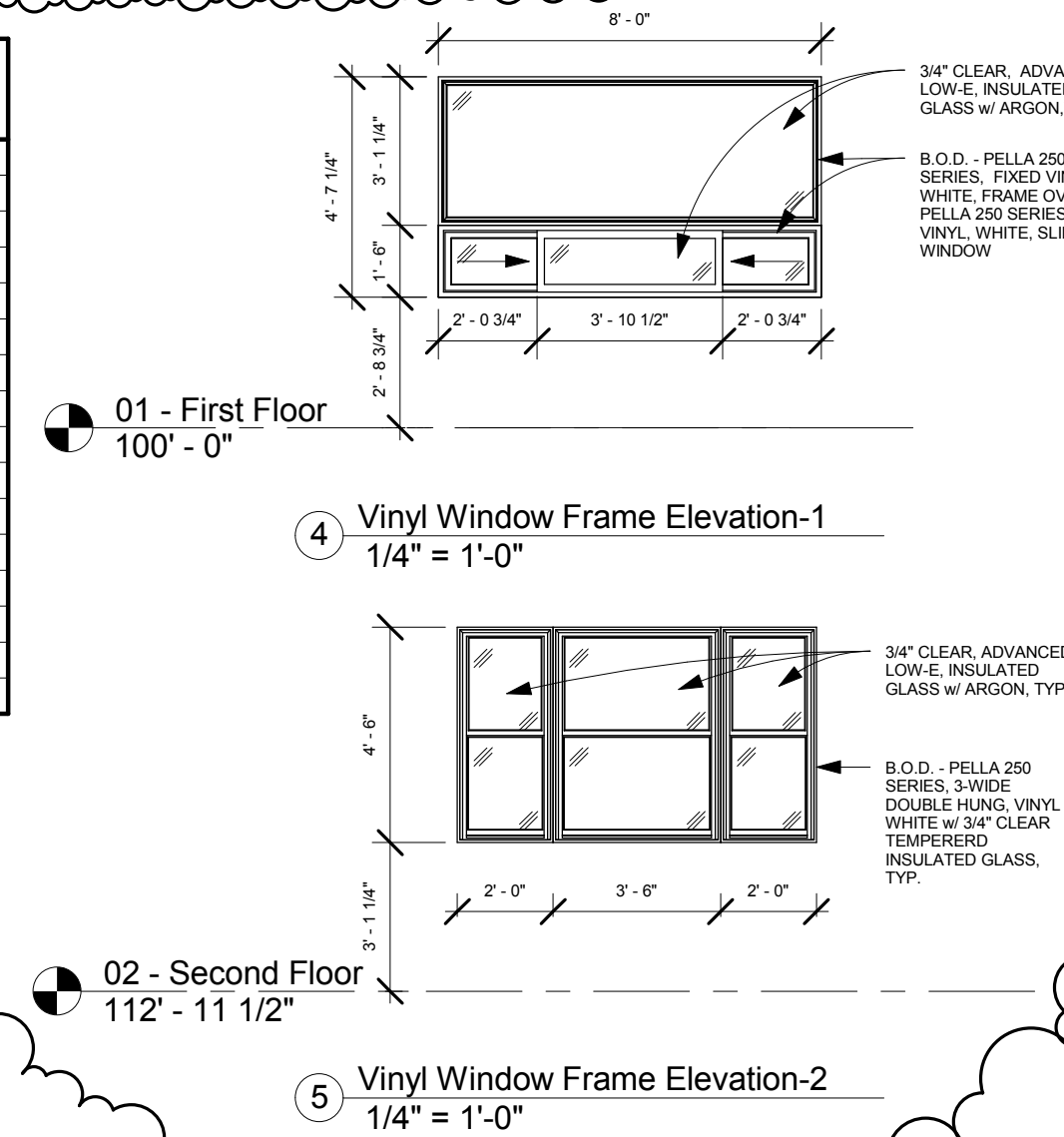
HW-2
Doors: 107, C202
Description:

3	Hinge	TA2714 4-1/2" x 4-1/2"	US26D	MK
1	Office Lock	DG1 8205 LNL	US26D	SA
1	Wall Stop	409	US32D	RO

HW-3
Doors: C109, M101B, M102B
Description: Exterior Hollow Metal Door

1	Continuous Hinge	MCK-14HD 83"	CL	MK
1	Classroom Lock	DG1 8237 LNL	US26D	SA
1	Door Closer	351 CPSH	EN	SA
1	Kick Plate	K1050 10" x 2" LDW 4BE CSK	US32D	RO
1	Threshold	171A	PE	PE
1	Gasketing	294AV TKSP8	PE	PE
1	Sweep	345CNB	PE	PE
1	Latch Protector	321	US32D	RO

KEY SCHEDULE FOR DOOR FRAME SCHEDULE:	
HMF	HOLLOW METAL FRAME
CW	ALUMINUM CURTAIN WALL FRAME
AL	ALUMINUM FRAME
SSF	STAINLESS STEEL FRAME
W	WOOD VENEER DOOR
HM	HOLLOW METAL DOOR
AL	ALUMINUM DOOR
SS	STAINLESS STEEL DOOR
SP	SPECIAL DOOR
TVF	TRANSPARENT VARNISH FINISH
SGE	SEMI-GLOSS ENAMEL
CLR/ANNO	CLEAR ANNOXIDIZED ALUMINUM
HW	HARDWARE
MANF	HARDWARE BY MANUFACTURER



HW-4
Doors: C110, C111
Description:

3	Hinge	TA2714 4-1/2" x 4-1/2"	US26D	MK
1	Storeroom Lock	DG1 8204 LNL	US26D	SA
1	Surface Overhead Holder/Stop	1548S	US26D	SA

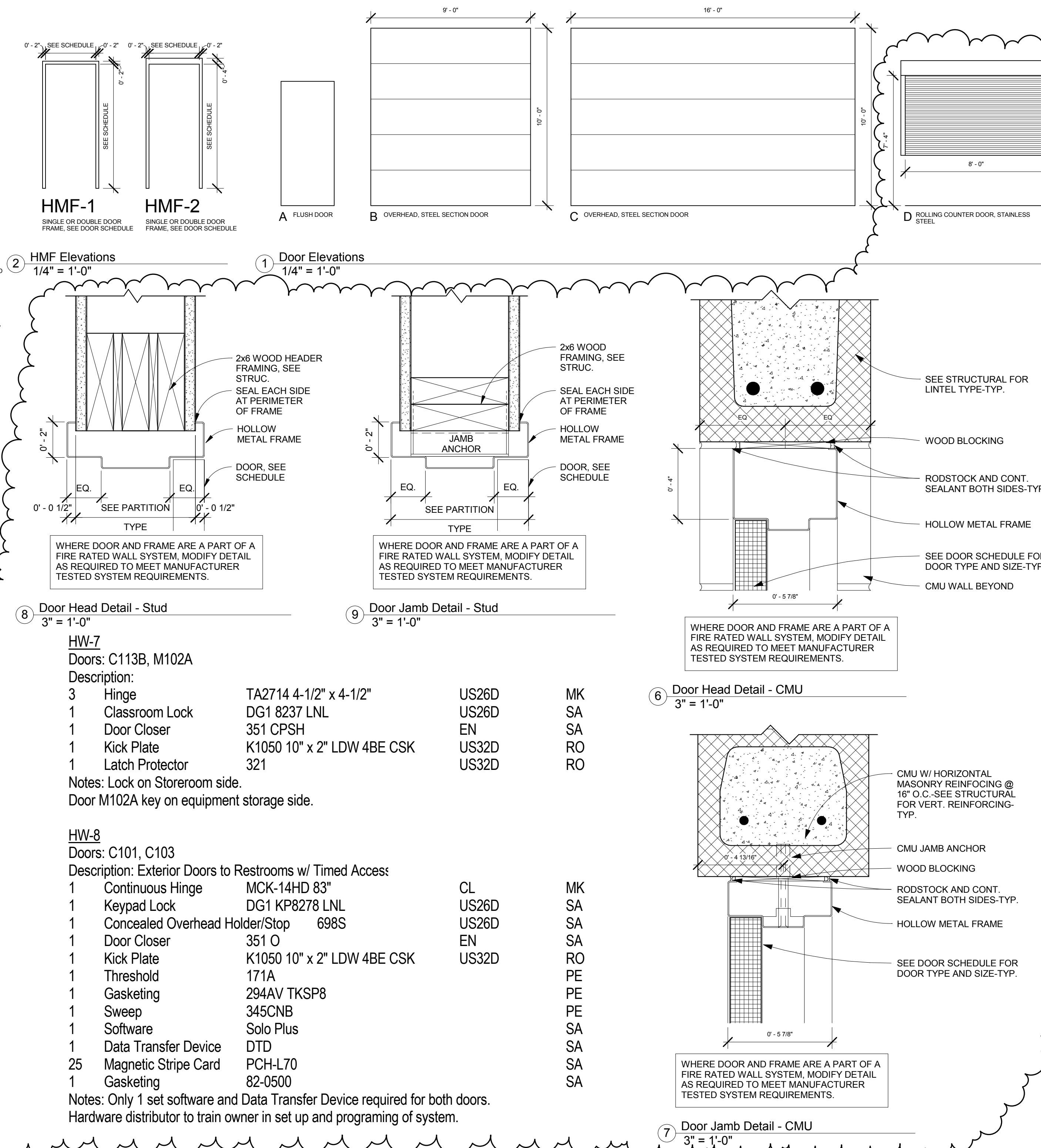
HW-5
Doors: C112A
Description: Exterior Inswing Hollow Metal Door

1	Continuous Hinge	MCK-14HD 83"	CL	MK
1	Classroom Lock	DG1 8237 LNL	US26D	SA
1	Door Closer	351 H	EN	SA
1	Kick Plate	K1050 10" x 2" LDW 4BE CSK	US32D	RO
1	Wall Stop	409	US32D	RO
1	Threshold	171A	PE	PE
1	Gasketing	294AV TKSP8	PE	PE
1	Sweep	345CNB	PE	PE

HW-6
Doors: C113A
Description:

3	Hinge	TA2714 4-1/2" x 4-1/2"	US26D	MK
1	Classroom Lock	DG1 8237 LNL	US26D	SA
1	Wall Stop	409	US32D	RO

ROOM SCHEDULE										
ROOM NUMBER	ROOM NAME	FLOOR FINISH	BASE FINISH	WALL FINISH				CEILING FINISH	CEILING HEIGHT	COMMENTS
				NORTH WALL	SOUTH WALL	EAST WALL	WEST WALL			
C101	MENS RESTROOM	CONC./ SEAL	VINYL BASE	CMU/ PAINT	CMU/ PAINT	CMU/ PAINT	CMU/ PAINT	GWB/ PAINT	9' - 0"	
C102	ALCOVE	CONC.							10' - 0"	
C103	WOMENS RESTROOM	CONC./ SEAL	VINYL BASE	CMU/ PAINT	CMU/ PAINT	CMU/ PAINT	CMU/ PAINT	GWB/ PAINT	9' - 0"	
C104	FIELD MAINT.	CONC./ SEAL		CMU/ PAINT	CMU/ PAINT	CMU/ PAINT	CMU/ PAINT	GWB/ PAINT		
C105	ALCOVE	CONC./ SEAL		CMU/ PAINT	CMU/ PAINT	CMU/ PAINT	CMU/ PAINT	GWB/ PAINT		
C106	TLT	CONC./ SEAL	VINYL BASE	CMU/ PAINT	CMU/ PAINT	CMU/ PAINT	CMU/ PAINT	GWB/ PAINT	9' - 0"	
C107	STORAGE	CONC./ SEAL	VINYL BASE	CMU/ PAINT	CMU/ PAINT	CMU/ PAINT	CMU/ PAINT	GWB/ PAINT	9' - 0"	
C108	UTILITY	CONC./ SEAL		CMU/ PAINT	CMU/ PAINT	CMU/ PAINT	CMU/ PAINT	GWB/ PAINT		
C109	STAIR	CONC./ SEAL	VINYL BASE	CMU/ PAINT	CMU/ PAINT	CMU/ PAINT	CMU/ PAINT	GWB/ PAINT	9' - 0"	
C110	STOR.	CONC./ SEAL	VINYL BASE	CMU/ PAINT	CMU/ PAINT	CMU/ PAINT	CMU/ PAINT	GWB/ PAINT	9' - 0"	
C111	STOR.	CONC./ SEAL	VINYL BASE	CMU/ PAINT	CMU/ PAINT	CMU/ PAINT	CMU/ PAINT	GWB/ PAINT	9' - 0"	
C112	CONCESSIONS	CONC./ SEAL	VINYL BASE	CMU/ PAINT	CMU/ PAINT	CMU/ PAINT	CMU/ PAINT	GWB/ PAINT	9' - 0"	
C113	STOR.	CONC./ SEAL	VINYL BASE	CMU/ PAINT	CMU/ PAINT	CMU/ PAINT	CMU/ PAINT	GWB/ PAINT	9' - 0"	
C201	VIEW AREA	CPT	VINYL BASE	GWB/ PAINT	GWB/ PAINT	GWB/ PAINT	GWB/ PAINT	GWB/ PAINT	9' - 0"	
C202	CHANGING RM./ EQUIP.	CPT	VINYL BASE	GWB/ PAINT	GWB/ PAINT	GWB/ PAINT	GWB/ PAINT	GWB/ PAINT	9' - 0"	
C203	STAIR	VINYL	VINYL BASE	GWB/ PAINT	GWB/ PAINT	GWB/ PAINT	GWB/ PAINT	GWB/ PAINT	9' - 0"	
C204	VIEW AREA	CPT	VINYL BASE	GWB/ PAINT	GWB/ PAINT	GWB/ PAINT	GWB/ PAINT	GWB/ PAINT	9' - 0"	
M101	REC STORAGE	CONC./ SEAL								
M102	EQUIPMENT STORAGE	CONC./ SEAL								



Lincoln
1221 N Street, Suite 600
Lincoln, NE 68508
Phone 402-476-9700
Fax 402-476-9722

Vermillion
15 East Main, Suite 201
Vermillion, SD 57069
Phone 605-624-1081

DAVIS
DESIGN

benesch
engineers - scientists - planners

This document was originally signed and sealed by:
ARCHITECT
LEROY P. SVATORA
A-1806
ON: 08-26-2014
STATE OF NEBRASKA
This media should not be considered a certified document.

CLIENT INFORMATION
Waverly Lawson Park Phase II Improvements

PROJECT INFORMATION
Concessions Building

Waverly, Ne

JOB # 14-0166

ISSUE DATE 08/26/2014

ID	Date	Description
1	8/10/2014	Addendum 1

Checked by: RCL
Drawn by: RCL
David Design All Rights Reserved

SHEET TITLE
Schedules

SHEET NUMBER
A-601