



19 August, 2014

MILITARY DEPARTMENT
STATE of NEBRASKA
LINCOLN, NEBRASKA

**NEBRASKA ARMY NATIONAL GUARD
SEWARD MUSEUM REMODEL – PHASE 2**

at

Seward Readiness Center
201 North 8th Street
Seward, NE 68434

PROJECT NO. 31030123

A D D E N D U M N O . 1

The original specifications and drawings on the STATE OF NEBRASKA REQUEST for PROPOSAL FORM for the project noted above are amended as noted in this Addendum No. 1.

Receipt of this Addendum shall be acknowledged by inserting its number and date in the space provided on the Bid Form.

ADDENDUM NO. 1

NOTE TO ALL PLANHOLDERS: Please insert this Addendum into your copy of the Contract Documents for the above named project.

The following changes to the Contract Documents are issued by the CFMO-CMB and shall have the same force and affect as though a part of the original issue.

THE RECEIPT DATE, TIME and LOCATION of the BID PROPOSAL submission HAVE NOT CHANGED.

Project Manual

ITEM NO.

ADD 1-1 BID PROPOSAL FORM Page BF - 4 of 5:

Replace pages "BF - 1 through BF - 5" with attached "BF – 1 through BF - 5 Revised".

Bid Form is being revised as follows:

1. Identify Owner's intent to achieve Substantial Completion no later than 15 June, 2015.
2. Change the description of ABI No. 6.
3. Eliminate one unit price for alternative adhesive in Section 096500.

ADD 1-2 See attached Sign-In sheet from Pre-Bid Conference held on 14 August, 2014 at the site.

ADD 1-3 Contract Documents have been submitted to the State Fire Marshal's (SFM) office and have been reviewed. SFM Permit shall be forwarded to Contractor once received. Contractor shall be responsible for executing and coordinating all requirements, including inspections, of SFM permit and

other all other required permits. It is noted that the City of Seward will not be issuing a Building Permit nor conducting and inspections.

- ADD 1-4 In case of any discrepancy, the Instructions to Bidders, Supplementary Instructions to Bidders, Supplementary Conditions of the Contract for Construction, Documents 00600, 00650, 00700, 00800 and the Sample Construction Contract shall take precedence over the AIA A201 and Section 007300.
- ADD 1-5 It is the Owner's intent to recycle any construction debris that is recyclable. See Section 017419 for further information.
- ADD 1-6 Make the following changes to the Architectural Specifications.
1. Section 007300 – Supplementary Conditions.
 - a. Delete subsection 1.02.G.1.c.
- ADD 1-7 Make the following changes to the Architectural Specifications.
1. Section 012300 – Additive Bid Items (ABI).
 - a. Change 1.04.C.1. to read:
 - i. Provide grading and construction of a new 6 foot wide walking path, construction of a new 4 foot wide sidewalk connecting the public sidewalk along South Jackson Street to the new 6 foot wide walking path, final grading and seeding. 6 foot wide path shall be colored concrete and 4 foot wide sidewalk shall be standard gray concrete. Include all necessary grading, seeding, sealants and other items shown on sidewalk details for a complete installation.
 - b. Change 1.04.F.1 to read:
 - i. Provide concrete parking surface in lieu of rock including all required grading, sub-base, seeding, sealants, striping and all other items for a complete installation. See Civil drawings for further information.
- ADD 1-8 Make the following changes to the Architectural Specifications.
1. Section 017800 – Closeout Submittals
 - a. Delete original Section 017800. New Section 017800 is added in its entirety.
- ADD 1-9 Make the following changes to the Mechanical Specifications.
1. The following manufacturers have received prior approval for bidding purposes subject to shop drawing review:
 - a.

<u>List Equipment Here</u>	<u>List Manufacturer Here</u>
Flow Control Valves	Nexus Valve
Humidifiers	Nortec
Spiral Ductwork	Spiral Pipe of Texas
- ADD 1-10 Make the following changes to the Mechanical Specifications.
1. Section 220501 – Closeout Submittals for Plumbing.
 - a. Add paragraph 220501-1.03-A-1 to read:
 - i. All required Closeout Documents shall be submitted, reviewed and approved by Owner/Engineer no later than 120 calendar days from the Date of Substantial Completion. Final application for payment shall not be submitted until all closeout requirements have been submitted and accepted.
 - b. Revise paragraph 220501-1.03-B-1 to read:
 - i. For equipment, or component parts of equipment put into service during construction and operated by the Owner, submit all operation and maintenance data prior to Owner's training. Contractor shall distribute copies of O & M Manuals at time of training and demonstration to all attendees for reference during training.
 - c. Revise paragraph 220501-1.03-B-2 to read:

- i. Contractor shall upload one set of Operations and Maintenance Manuals to electronic document submittal service for review by Architect/Engineer no later than 50% of construction completion. Architect and Engineer will review and return comments via EDSS. If further changes are required, the Contractor will re-submit revised O & M sections via EDSS for review.
- d. Delete paragraphs 220501-1.03-B-3 and 220501-1.03-B-4.

ADD 1-11 Make the following changes to the Mechanical Specifications.

- 1. Section 230501 – Closeout Submittals for HVAC.
 - a. Add paragraph 230501-1.03-A-1 to read:
 - i. All required Closeout Documents shall be submitted, reviewed and approved by Owner/Engineer no later than 120 calendar days from the Date of Substantial Completion. Final application for payment shall not be submitted until all closeout requirements have been submitted and accepted.
 - b. Revise paragraph 230501-1.03-B-1 to read:
 - i. For equipment, or component parts of equipment put into service during construction and operated by the Owner, submit all operation and maintenance data prior to Owner's training. Contractor shall distribute copies of O & M Manuals at time of training and demonstration to all attendees for reference during training.
 - c. Revise paragraph 230501-1.03-B-2 to read:
 - i. Contractor shall upload one set of Operations and Maintenance Manuals to electronic document submittal service for review by Architect/Engineer no later than 50% of construction completion. Architect and Engineer will review and return comments via EDSS. If further changes are required, the Contractor will re-submit revised O & M sections via EDSS for review.
 - d. Delete paragraphs 230501-1.03-B-3 and 230501-1.03-B-4.

ADD 1-12 Make the following changes to the Electrical Specifications.

- 1. Section 265100 – Interior Lighting.
 - a. Add paragraph 265100-3.07-C to read:
 - i. All required Closeout Documents shall be submitted, reviewed and approved by Owner/Engineer no later than 120 calendar days from the Date of Substantial Completion. Final application for payment shall not be submitted until all closeout requirements have been submitted and accepted.

ADD 1-13 Make the following changes to the Electrical Specifications.

- 1. Section 265600 – Exterior Lighting
 - a. Add paragraph 265600-3.07-C to read:
 - i. All required Closeout Documents shall be submitted, reviewed and approved by Owner/Engineer no later than 120 calendar days from the Date of Substantial Completion. Final application for payment shall not be submitted until all closeout requirements have been submitted and accepted.

ADD 1-14 Make the following changes to the Electrical Specifications.

- 1. Section 271005 – Structured Cabling for Voice and Data.
 - a. Revise paragraph 271005-3.04-D to read:
 - i. Submit Final Test results in a 3-ring binder sleeve included with O&M Manuals to Owner in a readable format on CD Rom.

ADD 1-15 Make the following changes to the Electrical Specifications.

- 1. Section 283100 – Fire Detection and Alarm.
 - a. Add paragraph 283100-1.04-J-4

- i. All required Closeout Documents shall be submitted, reviewed and approved by Owner/Engineer no later than 120 calendar days from the Date of Substantial Completion. Final application for payment shall not be submitted until all closeout requirements have been submitted and accepted.
- b. Add paragraph 283100-1.04-J-5.
 - i. For equipment, or component parts of equipment put into service during construction and operated by the Owner, submit all operation and maintenance data prior to Owner's training. Contractor shall distribute copies of O & M Manuals at time of training and demonstration to all attendees for reference during training.

- ADD 1-16 Make the following changes to the Civil Specifications.
- 1. Section 321313 - Concrete Paving.
 - a. Delete Part 1-General, Subsection 1.04 Quality Assurance, Paragraph C in its entirety. Add the following:
 - i. C. Concrete Testing Service: The Contractor will retain a testing laboratory as specified in Division 1 Section, "Testing Laboratory Services" to perform quality tests on concrete. Materials and work may require testing or re-testing at any time during the progress of the work. Contractor shall pay for all testing and incidentals related to re-testing.

- ADD 1-17 Make the following changes to the Civil Specifications.
- 1. Section 321313 - Concrete Paving.
 - a. Delete Part 3-Execution, Subsection 3.10 Field Quality Control, Paragraph A in its entirety. Add the following:
 - i. A. Contractor shall engage a qualified independent testing and inspecting agency to perform field tests and inspections and prepare test reports.

- ADD 1-18 Make the following changes to the Civil Specifications.
- 1. Section 321313.1 - Integrally Colored Concrete.
 - a. Delete Part 2-Products, Subsection 2.3 Colors, Paragraph A, Item Number 4 in its entirety. Add the following:
 - i. Color: Selected by Architect from Standard Color choices.

Drawings

ITEM NO.

- ADD 2-1 Sheet C1.1.
 - 1. Revise: Clarification of demolition items (attached).
- ADD 2-2 Sheet C1.2
 - 1. Add: Callout notes to handicap stalls, added precast wheel stops for gravel parking lot (attached).
- ADD 2-3 Sheet C1.3
 - 1. Add: Spot grades (attached).
- ADD 2-4 Sheet C2.1
 - 1. Add: Detail Number 9 (attached).
- ADD 2-5 Sheet AD1.1.
 - 1. Reference detail N3.
 - a. Remove CMU block pattern from two rectangles below the clerestory window. These rectangles represent the penetrations for the ductwork from the new HVAC rooftop unit through the exterior wall.
 - 2. Reference detail A12.

- a. Remove notes 3 and 4 from the General Demolition Notes. These notes shall apply to new work on the new floor plan rather than demolition work.
- b. See drawing 10 for addition of wall elevation tags to Demolition Plan.

ADD 2-6

Sheet A1.0A.

1. Reference Planting Schedule-Base Bid.
 - a. Plant type SBG-Sand Bluestem Grass shall be provided in 1 ½ gallon containers.
 - b. See drawing 5 for changes to Landscape Plan.

ADD 2-7

Sheet A1.0B.

1. Reference Planting Schedule-Base Bid.
 - a. Change "Base Bid" to "ABI".
 - b. Plant type SBG-Sand Bluestem Grass shall be provided in 1 ½ gallon containers.
2. Reference detail J21.
 - a. Architectural Finish note applies to all surfaces of wall.
3. Reference detail N1.
 - a. Add Field Verify notes to window rough openings. Contractor shall field verify prior to fabrication.

ADD 2-8

Sheet A1.1.

1. Reference Room Finish Schedule, Floor Finish Column.
 - a. The sealer for rooms Stair 107 and JC 116 shall be Type 2 as specified in Section 033000. All other rooms indicated to have sealer as the floor finish shall be Type 1 as specified in Section 033000.
2. Reference detail A12.
 - a. See drawing 6 for changes to masonry openings. Similar detail occurs at three other locations adjacent the reception desk.
3. See drawing 5-detail N17 for new center handrail elevation.
4. Reference detail A12.
 - a. See drawing 16-detail A12R/A1.1 for various changes to the plan.

ADD 2-9

Sheet A1.2.

1. Reference detail K4.
 - a. See drawing 11 for changes to shaftwall ceiling.
 - b. See drawing See drawing 15-detail A12R/A1.2 for revisions to Clerestory/Soffit Plan ABI window type clarification.
 - c. Reference detail A12. Delete box note at lower right corner that reads: "Note: Paint All Ductwork EP-1".

ADD 2-10

Sheet A1.3.

1. Reference details L19 and S19.
 - a. See drawings 12 and 13 respectively for revisions to angle supports for new roof openings.
2. Reference detail A13.
 - a. Remove detail box A10/A5.3 from lower left corner of Roof Plan.
 - b. Change note in Box just below new rooftop unit on west side to read:
 - i. SEE DETAIL P2/A5.1 FOR PENETRATION DETAILS.

ADD 2-11

Sheet A2.1.

1. Reference Door Schedule.
 - a. Change fire rating of Door 107 to 60 minutes.
 - b. Delete columns labeled "Glass Type, Head, Jamb Left, Jamb Right, Sill" from schedule.
2. Reference detail A13.
 - a. Remove detail symbol from Coats 120B.
 - b. See drawing 1-detail A13R/A6.1 to stain existing wood decking in Room 112.

- c. See drawing 2-detail A13/A2.1 for new soffit detail at end of shrouds. Typical at southwest shroud and west shroud.

- ADD 2-12 Sheet A3.1.
1. Reference detail G12.
 - a. Section cut obscured by Gridline B shall read P1/A6.1.
 - b. See drawing 16-detail G12R. Window located on First Floor between Gridlines A and B shall be replace with Type 2 glass.
- ADD 2-13 Sheet A5.2.
1. Reference detail A1.
 - a. See drawing 8-detail A1R for wall rail elevation.
 2. Reference detail F1.
 - a. See drawing 14 for changes to guardrail detail.
- ADD 2-14 Sheet A5.3.
1. Reference details H12 and H15.
 - a. See drawing 7 for changes to reception desk details.
 2. Reference detail H22.
 - a. See drawing 9 for revised detail.
 3. Reference detail A18.
 - a. See drawing 9 for revised detail.
 4. Reference details A10 and A15.
 - a. Change keynote number 062000 to 064100 in both details. Maple Veneer Plywood still applies.
 5. Reference details A18 and A22.
 - a. Change keynote number 062000 to 064100 in both details referring for all Wood Trim.
- ADD 2-15 Sheet A6.1.
1. Reference Border Sheet.
 - a. See drawing 17. This sheet is being added in its entirety for the inclusion of a Professional Seal by the Structural Engineer.
 2. Reference detail P1.
 - a. See drawing 1-detail P1R/A6.1 for changes shroud height.
 3. See drawing 2-detail T20 for new soffit detail.
 4. Reference detail A7 and A1.
 - a. See drawing 3 and drawing 4 for changes to shrouds.
- ADD 2-16 Sheets M1.0, M1.1 and M2.1.
1. Revise column line numbers as follows:
 - a. Change grid line 7 to grid line B.
 - b. Change grid line 6 to grid line C.
 - c. Change grid line B to grid line D.
 - d. Change grid line C to grid line E.
 - e. Change grid line D to grid line F.
 - f. Change grid line E to grid line G.
 - g. Change grid line F to grid line H.
 - h. Change grid line G to grid line I.
- ADD 2-17 Sheet E1.0.
1. Revise column line numbers as follows:
 - a. Change grid line 7 to grid line B.
 - b. Change grid line 6 to grid line C.
 - c. Change grid line B to grid line D.
 - d. Change grid line C to grid line E.
 - e. Change grid line D to grid line F.

- f. Change grid line E to grid line G.
 - g. Change grid line F to grid line H.
 - h. Change grid line G to grid line I.
2. Remove and relocate existing security equipment on southeast door of Supply 104.
 3. Sheet Notes:
 - a. Revise Note 9 to read: Remove and relocate existing security contacts and equipment for IDS System. Relocate to new door south of Corridor 105. See Sheet E3.0 for new location.
 4. Remove existing light switch for exterior lights in Stair 003, Storage/Work 007, and Kitchen 108.
 5. Remove existing motion detector in Supply 104 and return to Owner. See attached drawing Sheet E1.0 Attachment No. 1.

ADD 2-18 Sheet E2.0 – Lower Level & First Level Plan – Lighting.

1. General Note:
 - a. Add Note A to read: Where emergency lighting is connected to lighting circuit and is connected to Panel "LCP," then an un-switched conductor shall be provided in home run for emergency lighting.
2. Sheet Notes:
 - a. Add Note 19 to read: Circuit shall be connected ahead of lighting control relay.
3. Revise column line numbers as follows:
 - a. Change grid line 7 to grid line B
 - b. Change grid line 6 to grid line C
 - c. Change grid line B to grid line D
 - d. Change grid line C to grid line E
 - e. Change grid line D to grid line F
 - f. Change grid line E to grid line G
 - g. Change grid line F to grid line H
 - h. Change grid line G to grid line I
4. Revise lighting layout in Theater 102. See attached drawing Sheet E2.0 attachment No. 1.
5. Move light switch to south side of door in Men's RR 118.
6. Modify circuiting in Exhibition 109 to accommodate combination exit sign and emergency lighting. See attached drawing Sheet E2.0 attachment No. 2.
7. Remove light switch in Corridor 111 for exterior lights.

ADD 2-19 Sheet E3.0 – Lower Level & First Level Plan – Electrical.

1. Sheet Note:
 - a. Revise Note 12 to read: Relocated contacts and security equipment for IDS System. See Sheet E1.0 for previous location. Coordinate installation with Owner.
 - b. Add Note 39 to read: Do not mount receptacle for RTU-1 on any access panels. Field coordinate exact mounting location.
2. Revise height of north receptacle in Women's RR 114 to match height of south receptacle in existing box. Field coordinate exact mounting height.
3. Existing boxes for receptacles near sinks in Women's RR 114 and Men's RR 118 are mounted above sink height.
4. Relocated existing security contacts and security equipment for IDS system to door south of Corridor 101. See attached drawing Sheet E3.0 attachment No. 1.
5. Move fire alarm strobe to south side of door in Men's RR 118.
6. Move disconnect switches for condensing units CU-4, CU-7, CU-8, CU-9 and CU-10 to south exterior wall of building.
7. Move disconnect switches for condensing units CU-5, CU-6, and CU-11 to west exterior wall of building.
8. In Breakroom 112, show (2) two line conductors and (1) one neutral conductor tick marks in circuits LD-6, 24 and LD-26, 28.
9. Remove security door contact and motion detector on Mech 104 door. See attached drawing Sheet E3.0 Attachment No. 1.

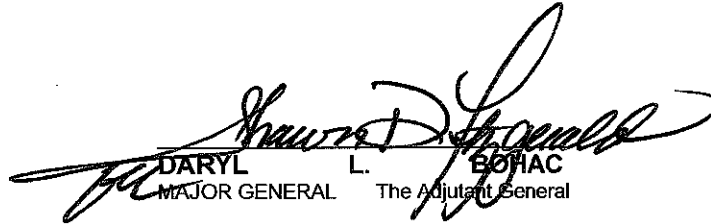
ADD 2-20 Sheet E4.0 – Electrical Schedules.

1. Light Fixture Schedule: Change fixture type 37 to linear LED adjustable wall bracket with 18" arms, dimmable integral driver, 15 degree beam spread, 4000K color temperature, natural aluminum finish, feed thru wiring. Insight Lighting model MVW-3.5-40K-15-U-EAS-18-48-DIM-1-TN-ACV. Provide (11) 4 foot fixtures for a total length of 44 feet.
2. Panel Schedule MDP: Provide 60A/3P spare circuit breaker.

ADD 2-21 Sheet E4.1 – Symbols, Details & Electrical Risers.

1. Lighting Control Riser Notes
 - a. Add Note 6 to read: For equipment, or component parts of equipment put into service during construction and operated by the Owner, submit all operation and maintenance data prior to Owner's training. Contractor shall distribute copies of O & M Manuals at time of training and demonstration to all attendees for reference during training.
 - b. Add Note 7 to read: Provide minimum 4 hours detailed operation and maintenance instructions and training. Use submitted operation and maintenance manual as reference during training. Supplement with training material as required.
 - c. Add Note 8 to read: Manufacturer shall supply a 3-year warranty on all hardware and software.
2. Light Fixture #1 Mounting Detail: Modify detail to match detail on attached drawing Sheet E4.1 Attachment No. 1.

THIS ADDENDUM SHALL BE ATTACHED TO AND MADE A PART OF THE DRAWINGS AND SPECIFICATIONS AND SHALL BE ACKNOWLEDGED WITH THE BIDDER'S PROPOSAL.


DARYL L. EBY
MAJOR GENERAL The Adjutant General

End of Addendum No. 1





NEBRASKA ARMY NATIONAL GUARD SEWARD MUSEUM REMODEL PHASE 2

at the

SEWARD READINESS CENTER
201 North 8th Street
Seward, NE 68434
for the

MILITARY DEPARTMENT
STATE of NEBRASKA
Lincoln, Nebraska

PROPOSAL

TO: DARYL L. BOHAC
Major General The Adjutant General
Military Department State of Nebraska
2433 NW 24th Street
Lincoln, Nebraska 68524-1801

In compliance with your Invitation for Bids dated 31 July 2104 the undersigned hereby proposes to furnish all labor, equipment, materials, transportation and supervision, and perform all work for the project titled "**SEWARD MUSEUM REMODEL PHASE 2, CFMO Project No. 31090123**" at the **Seward Readiness Center, 201 North 8th Street, Seward, Nebraska** in strict accordance with the Plans and Specifications and Contract Documents in consideration of the following amounts:

BASE BID if accepted, see INSTRUCTIONS to BIDDERS - Paragraph 6.4 C.):

For furnishing all labor, equipment, materials, transportation, supervision and any required testing a for a complete and operational project on the above named project facility to include but, not limited to:

SCOPE OF WORK: The Project will include all equipment, labor and materials to remodel the existing facility into the Nebraska National Guard Museum. The project is in the second phase of the remodel. The Project will consist of site work and parking, site demolition including metal building demolition, window and door modification, interior remodel including new finishes, new HVAC system, latrine remodel, electrical, IDS, plumbing, fire alarm system and fire sprinkler system. Scope of all work is indicated on the Contract Documents.

NOTE: ALL BLANKS SHALL BE FILLED IN WITH A "PRICE AMOUNT" ON EACH BASE BID ITEM. ALL OTHER BLANKS SHALL BE FILLED IN WITH THE APPROPRIATE INFORMATION REQUESTED. FAILURE TO DO SO WILL CONSTITUTE REJECTION OF THE BID PROPOSAL. BID PROPOSAL SHALL BE ENTERED IN BOTH WORDS AND FIGURES.

**NEBRASKA ARMY NATIONAL GUARD
SEWARD MUSEUM REMODEL PHASE 2**

at the

**SEWARD READINESS CENTER
201 North 8th Street
Seward, NE 68434**

Base Bid:

Bid Item Amount

TOTAL BASE BID AMOUNT

\$ _____

(Enter Bid in **both words and figures**. In case of discrepancy, the amount shown in words shall govern.)

**ALTERNATE (Additive Bid Items)
See Section 012300 for additional information.**

ALTERNATE: (Additive Bid Item)

The Base Bid may be ***increased*** in accordance with the Alternate Proposals (Additive Bid Items) as selected from the following. Alternates (Additive Bid Items) are described in Instruction to Bidders and Section 012300 – Additive Bid Items (ABI).

ALTERNATE No. 1 (Additive Bid Item No. 1): If accepted, **ADD** this amount to the Total Base Bid Amount:
Extend Electrical Power to West End of Site.

\$ _____

(Enter Bid in both words and figures. In case of discrepancy, the amount shown in words shall govern.)

ALTERNATE No. 2 (Additive Bid Item No. 2): If accepted, **ADD** this amount to the Total Base Bid Amount:
New site lighting at West end of site.

\$ _____

(Enter Bid in both words and figures. In case of discrepancy, the amount shown in words shall govern.)

ALTERNATE No. 3 (Additive Bid Item No. 3): If accepted, **ADD** this amount to the Total Base Bid Amount:
Provide the sidewalk extension and associated grading and seeding to extend sidewalk to the West end of the site as indicated.

\$ _____

(Enter Bid in both words and figures. In case of discrepancy, the amount shown in words shall govern.)

ALTERNATE No. 4 (Additive Bid Item No. 4): If accepted, **ADD** this amount to the Total Base Bid Amount:
New parking lot lighting.

\$ _____

(Enter Bid in both words and figures. In case of discrepancy, the amount shown in words shall govern.)

ALTERNATE No. 5 (Additive Bid Item No. 5): If accepted, **ADD** this amount to the Total Base Bid Amount:
Replace the clerestory windows at Main Exhibit 123.

\$ _____

(Enter Bid in both words and figures. In case of discrepancy, the amount shown in words shall govern.)

ALTERNATE No. 6 (Additive Bid Item No. 6): If accepted, **ADD** this amount to the Total Base Bid Amount:
Provide concrete parking surface in lieu of crushed rock.

\$ _____

(Enter Bid in both words and figures. In case of discrepancy, the amount shown in words shall govern.)

UNIT PRICES PROPOSAL
See Section 012200 for further information.

VENDOR shall complete the following Unit Prices for each category. These cost amounts may be used through out the project construction period for adjustments as an ADD or DELETE:

UNIT PRICES:

- 1. Water Vapor Emission Control System for Concrete Floors-Section 096006: \$ _____ SF
- 2. Alternative Adhesive-Section 096800: \$ _____ SF

Part II

In submitting the Proposal, the undersigned agrees:

1. To enter into and execute a standard Army National Guard Construction Contract within ten (10) days if awarded on the basis of this Proposal. The Contract requires liability and property damage insurance among other federal requirements to be met. A 'SAMPLE COPY' of the Contract is included in these Specifications.
2. This Bid will be held open for acceptance for a period of forty-five (45) days.
3. Attached hereto is a Bid Bond (AIA Document 310) in the amount of \$ _____ made payable to the State of Nebraska, which shall be forfeited should the undersigned fail to enter into a Contract with the Military Department, State of Nebraska or fail to furnish Labor and Material Payment Bonds (AIA Document A312) or Performance Bonds (AIA Document A312) as noted in the Instruction to Bidders. Power of Attorney is required with these AIA Documents.
4. The Military Department, State of Nebraska, reserves the right to waive informalities and irregularities and to make awards on bids which furnish the materials and construction that will in their opinion serve the best interest of the Military Department, State of Nebraska, or to reject any or all bids.
5. THE CONTRACTOR SHALL BE REQUIRED TO **(A.)** COMMENCE WORK WITHIN TEN (10) CALENDAR DAYS AFTER THE DATE THE CONTRACTOR RECEIVES THE "NOTICE TO PROCEED LETTER", and **(B.)** EXECUTE THE WORK DILIGENTLY, and **(C.)** *The contractor is also required to submit a Gantt Chart (or approved equal spreadsheet / construction schedule at the Pre-Construction Conference). This baseline, at a minimum, should contain the following work breakdown structure: project start up, site work, demolition, building addition, building remodel, mechanical, electrical, and project close out.*
6. I / We, in submitting this Bid estimate that the project will take _____ *calendar days* to complete the entire work and ready for use after the required commencement of work. **On this project, it is the Owner's intent to achieve Substantial Completion no later than 15 June, 2015.** The calendar days stated for completion includes final cleanup of the premises and requirements of "final inspection" to achieve Final Completion.

The undersigned acknowledges receipt of the following addenda:

NO. _____ THROUGH NO. _____

Name of Firm

- An Individual ()
- A Co-Partnership ()
- A Corporation ()

Corporate Seal and State of Incorporation

Date

Signature

Printed Name

Title

Address

City, State, Zip Code

Federal I.D. or Social Security No.

(_____) _____
Phone

(_____) _____
Fax

Email Address

NOTE: IF BIDDER IS A PARTNERSHIP, GIVE THE FULL NAMES OF ALL PARTNERS:

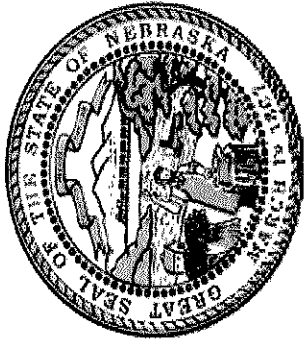
Partner

Partner

Partner

ATTENTION BIDDERS:

1. Bid Proposal Form must be filled out completely.
2. Bid Proposal shall be entered in both words and figures.
3. Bid Proposal must include required Bid Security (Bond).
4. Return the entire Bid Form, pages BF - 1 through BF - 5.
5. **Bid Proposal must be signed in BLUE ink.**



Nebraska Military Department
 Construction and Facilities Management Office
 JFHQ Building, 2433 NW 24th Street, Lincoln, Nebraska 68524-1801
 (402) 309-8450 (main) (402) 309-7480 (fax)



Pre-Bid Meeting - SEWARD MUSEUM REMODEL PHASE 2
 August 14, 2014 @ 10:00 a.m.

Name	Agency/Company	Phone Number	E-mail Address
Mr. Robert DeMoss	CFMO Contracts Officer	402-309-8464	robert.w.demoss2.nfg@mail.mil
Mr. Dale Wallman	CFMO Project Manager	402-309-8480	dale.a.wallman.nfg@mail.mil
Mr. Michael Daily	BVH Architects	402-475-4551	
Mr. Gerald Myer	Nebraska National Guard Historian	712-269-1981	
David Aubry	Meininger Fire Protection	402-466-2616	david@mfri.com
STEVE BEALL	CENTRAL CONTRACTING CORP	308-234-2421	sbeall@centralcontracting.net
Dave McNeal	Sampson Construction	402-434-5453	estimating@sampson-construction.com
Josh Krajewski	Engineered Controls Inc	402-434-2110	jkrajewski@engineeredcontrols.com
Steve Hremer	Kingsry Const Co	402-465-4400	shremer@kccobuilders.com
Jon Dybdal	Erich Broer Const.	402-438-2165	eb90138@windstream.net
Ervin Opp	Bones H/A	402-783-2050	erwinopp@boneshvac.com
Randy Reager	Rogge General Contract	402-441-3100	rreager@roggeinc.com
David Thibault	Stephens & Smith	402-479-6412	DThibault@stephensandsmith.com
AARON KENNING	NIFCO MECHANICAL	402-477-0666	akenning@nifcomechanical.com
HADI KOUTHA	ETI	402-476-1273	hkouta@eti-engineers.com
TONY DURSKEY	ETI	402-476-1273	tdursky@eti-engineers.com
RYAN HIER	BVH ARCHITECTS	402-475-4551	rhier@bvh.com
MEL MORATOR	LACEY CONSTRUCTION	402-443-1112	MEL@LACEYLOC.COM
CHUCK LACEY	LACEY CONSTRUCTION	402-480-1112	CHUCK@LACEYLOC.COM
MARK LOME	CITRENER CONSTRUCTION	402-477-6745	MARK@CITRENERCONSTRUCTION.COM

SECTION 017800
CLOSEOUT SUBMITTALS

PART 1 GENERAL

1.01 SECTION INCLUDES

- A. Project Record Documents.
- B. Operation and Maintenance Data.
- C. Warranties and bonds.

1.02 RELATED REQUIREMENTS

- A. Section 005000 - Contracting Forms and Supplements: List of Closeout Forms to be submitted.
- B. Section 007200 - General Conditions: Performance bond and labor and material payment bonds, warranty, and correction of work.
- C. Section 007300 - Supplementary Conditions: Requirements for warranties and bonds.
- D. Section 013000 - Administrative Requirements: Submittals procedures, shop drawings, product data, and samples.
- E. Section 017000 - Execution and Closeout Requirements: Contract closeout procedures.
- F. Individual Product Sections: Specific requirements for operation and maintenance data.
- G. Individual Product Sections: Warranties required for specific products or Work.

1.03 SUBMITTALS

- A. All required Closeout Documents shall be submitted, reviewed and approved by Owner/Architect no later than 120 calendar days from the Date of Substantial Completion. Final application for payment shall not be submitted until all closeout requirements have been submitted and accepted.
- B. Project Record Documents: Submit all documents to Architect maximum 30 days after Date of Substantial Completion. All documents shall be submitted via electronic document submittal service (EDSS) for review by Architect/Engineer.
- C. Operations and Maintenance Manuals: Contractor shall upload one set of Operations and Maintenance Manuals to electronic document submittal service for review by Architect/Engineer no later than 50% of construction completion. Architect and Engineer will review and return comments via EDSS. Contractor shall distribute copies of O & M Manuals at time of training and demonstration to all attendees for reference during training. If further changes are required, the Contractor will re-submit revised O & M sections via EDSS for review.
- D. Warranties and Bonds: At minimum two weeks prior to claim for Final Application for Payment, upload one set of Warranties and Bonds to electronic document submittal service for review by Architect/Engineer.
 - 1. Make submittals within 10 days after Date of Substantial Completion, prior to final Application for Payment. Upload all warranties and bonds to electronic document submittal service.
 - 2. For items of Work for which acceptance is delayed beyond Date of Substantial Completion, submit within 10 days after acceptance, listing the date of acceptance as the beginning of the warranty period.

PART 2 PRODUCTS - NOT USED

PART 3 EXECUTION

3.01 PROJECT RECORD DOCUMENTS

- A. Maintain on site one set of the following record documents; record actual revisions to the Work:
 - 1. Drawings.
 - 2. Specifications.

3. Addenda.
 4. Change Orders and other modifications to the Contract.
 5. Reviewed shop drawings, product data, and samples.
 6. Manufacturer's instruction for assembly, installation, and adjusting.
- B. Ensure entries are complete and accurate, enabling future reference by Owner.
 - C. Store record documents separate from documents used for construction.
 - D. Record information concurrent with construction progress.
 - E. Specifications: Legibly mark and record at each product section description of actual products installed, including the following:
 1. Manufacturer's name and product model and number.
 2. Product substitutions or alternates utilized.
 3. Changes made by Addenda and modifications.
 - F. Record Drawings and Shop Drawings: Legibly mark each item to record actual construction including:
 1. Measured depths of foundations in relation to finish first floor datum.
 2. Measured horizontal and vertical locations of underground utilities and appurtenances, referenced to permanent surface improvements.
 3. Measured locations of internal utilities and appurtenances concealed in construction, referenced to visible and accessible features of the Work.
 4. Field changes of dimension and detail.
 5. Details not on original Contract drawings.
 - G. Specifications: Legibly mark and record at each product section description of actual products installed, including the following:
 1. Manufacturer's name and product model and number.
 2. Product substitutions or alternates utilized.
 3. Changes made by Addenda and modifications.
 - H. Addenda, Architect's Supplemental Instructions (ASI) and Change Orders: Cut up and post copies of Addenda, ASI and Change Order items to proper locations on drawings to provide a complete record of all changes made during construction.
 - I. Record Drawings and Specifications shall be uploaded to electronic document submittal service. There will be a TAB identified as Contract Documents, with sub-titles 1) Record Drawings, and 2) Record Specifications. Upload documents to their respective tabs.
 - J. Architect/Engineer will review documents. Reviewed documents shall be uploaded by Architect back to EDSS for further processing by Contractor.

3.02 ASSEMBLY OF OPERATION AND MAINTENANCE MANUALS

- A. Assemble operation and maintenance data into durable manuals for Owner's personnel use, with data arranged in the same sequence as, and identified by, the specification sections. Coordinate with Sections 220501 and 230501 for further requirements.
- B. O & M Manual shall be provided at time of demonstration and training to all attendees for reference during training.
- C. Where systems involve more than one specification section, provide separate tabbed divider for each system.
- D. Prepare data in the form of an instructional manual.
- E. Binders: Commercial quality, 8-1/2 by 11 inch three D side ring binders with durable plastic covers; 2 inch maximum ring size. When multiple binders are used, correlate data into related consistent groupings.
- F. Cover: Identify each binder with typed or printed title OPERATION AND MAINTENANCE INSTRUCTIONS; identify title of Project; identify subject matter of contents.

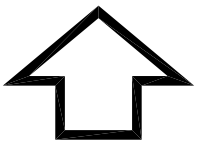
- G. Project Directory: Title and address of Project; names, addresses, and telephone numbers of Architect, Consultants, Contractor and subcontractors, with names of responsible parties.
- H. Tables of Contents: List every item separated by a divider, using the same identification as on the divider tab; where multiple volumes are required, include all volumes Tables of Contents in each volume, with the current volume clearly identified.
- I. Table of Contents. Identify tabbed sections and products contained within each tab.
- J. Dividers: Provide tabbed dividers for each separate product and system; identify the contents on the divider tab; immediately following the divider tab include a description of product and major component parts of equipment.
- K. Text: Manufacturer's printed data, or typewritten data on 24 pound paper.
- L. Drawings: Provide with reinforced punched binder tab. Bind in with text; fold larger drawings to size of text pages.
- M. Arrange content by systems under section numbers and sequence of Table of Contents of this Project Manual.
- N. Contents: Prepare a Table of Contents for each volume, with each product or system description identified, in three parts as follows:
 - 1. Part 1: Directory, listing names, addresses, and telephone numbers of Architect, Contractor, Subcontractors, and major equipment suppliers.
 - 2. Part 2: Operation and maintenance instructions, arranged by system and subdivided by specification section. For each category, identify names, addresses, and telephone numbers of Subcontractors and suppliers. Identify the following:
 - a. Significant design criteria.
 - b. List of equipment.
 - c. Parts list for each component.
 - d. Operating instructions.
 - e. Maintenance instructions for equipment and systems.
 - f. Maintenance instructions for special finishes, including recommended cleaning methods and materials, and special precautions identifying detrimental agents.
 - 3. Part 3: Project documents and certificates, including the following:
 - a. Product data.
 - b. Reports and Inspections required by individual specification sections.
 - c. Certificates.
 - d. Photocopies of warranties and bonds.
- O. Operation and Maintenance Manuals (O & M) shall be uploaded to electronic document submittal service. There will be a TAB identified as Closeout, with the O & M manual upload locations identified under each individual specification section.
- P. Architect/Engineer will review documents via electronic document submittal service. Contractor shall upload final documents with corrections to electronic document submittal service for archive.
- Q. After electronic documents have been reviewed by design team and corrected by Contractor, assemble and deliver 2 (two) sets of O & M manuals as instructed above directly to Owner.
- R. Contractor shall initiate, with the consent of the Architect, the archive process for the electronic documents on the electronic document submittal service.

3.03 WARRANTIES AND BONDS

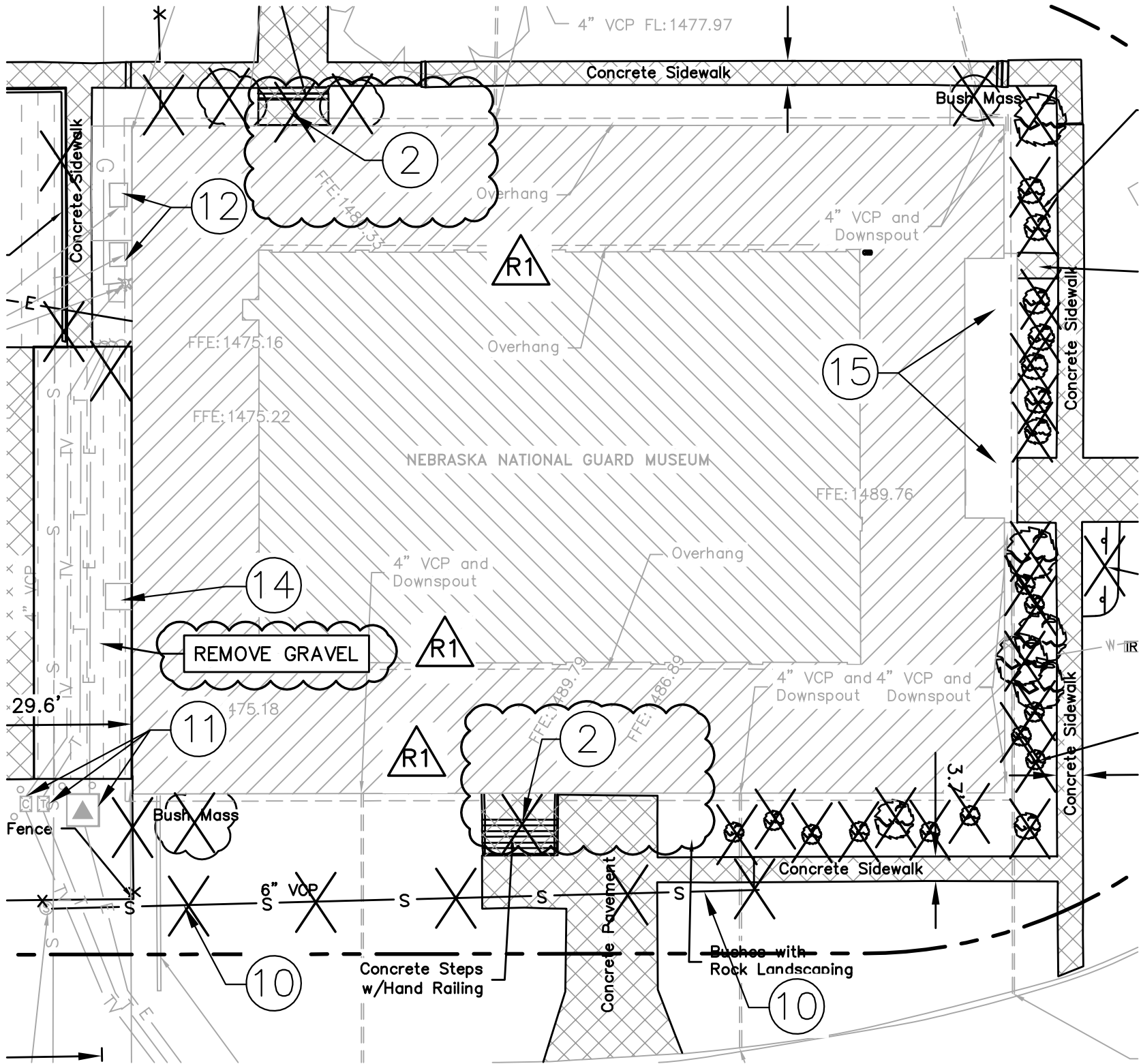
- A. Obtain warranties and bonds, executed in duplicate by responsible Subcontractors, suppliers, and manufacturers, within 10 days after substantial completion of the applicable item of work. Except for items put into use with Owner's permission, leave date of beginning of time of warranty until the Date of Substantial completion is determined.
- B. Verify that documents are in proper form, contain full information, and are notarized.

- C. Co-execute submittals when required.
- D. Retain warranties and bonds until time specified for submittal.
- E. Manual: Bind in commercial quality 8-1/2 by 11 inch three D side ring binders with durable plastic covers.
- F. Cover: Identify each binder with typed or printed title WARRANTIES AND BONDS, with title of Project; name, address and telephone number of Contractor and equipment supplier; and name of responsible company principal.
- G. Table of Contents: Neatly typed, in the sequence of the Table of Contents of the Project Manual, with each item identified with the number and title of the specification section in which specified, and the name of product or work item.
- H. Separate each warranty or bond with index tab sheets keyed to the Table of Contents listing. Provide full information, using separate typed sheets as necessary. List Subcontractor, supplier, and manufacturer, with name, address, and telephone number of responsible principal.
- I. Submittal and review process for warranties and bonds shall be similar to documents for Operations and Maintenance Manuals above.

END OF SECTION



NORTH



REMOVAL INFORMATION	
NO.	DESCRIPTION
1	WOOD STRUCTURE TO REMAIN IN PLACE. CONTRACTOR SHALL PROTECT WOOD STRUCTURE AND FOOTINGS.
2	CONTRACTOR SHALL REMOVE EXTERIOR STAIRS, COMPLETE.
3	CONTRACTOR SHALL REMOVE BUILDING COMPLETE, (FOUNDATION AND UTILITIES).

R1

DEMOLITION PLAN

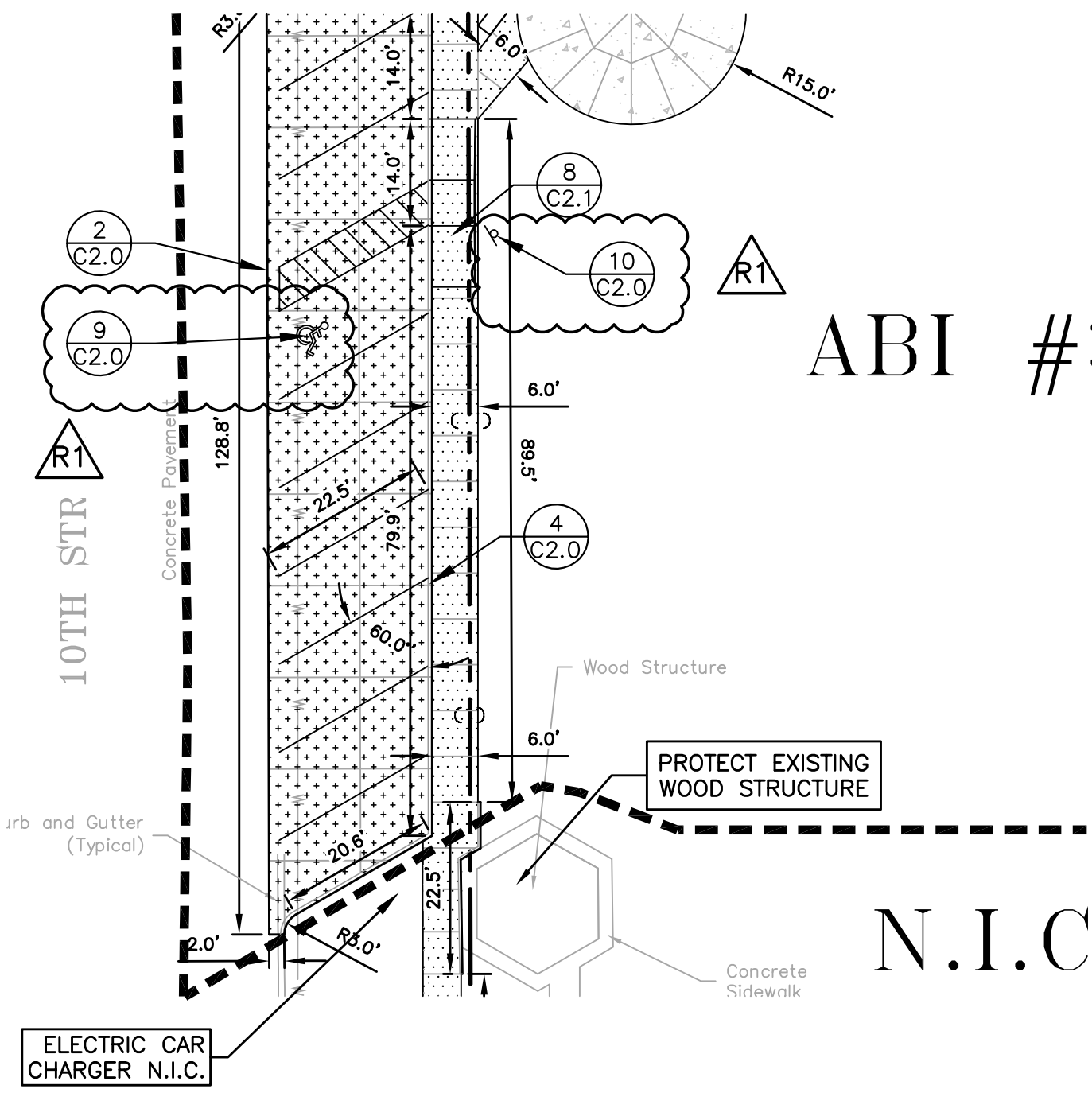
SCALE: 1"=20'

REGA NO. 141007

ISSUED FOR:	DATE:	BY:
REVISED REMOVAL INFORMATION NOTE #2. REVISED REMOVAL INFORMATION NOTE #3, ADDED REMOVAL INFORMATION NOTE #2 TO DEMO LAYOUT PLAN.	08/18/14	SDB

REF. SHT# C1.1

REGA
ENGINEERING
GROUP, INC.



ABI #3

N.I.C

LAYOUT PLAN

SCALE: 1"=20'

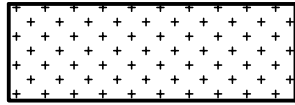
REGA NO. 141007

ISSUED FOR:	DATE:	BY:
ADDED HANDICAP PAINT AND SIGN DETAIL CALL OUT TO LAYOUT PLAN	08/18/14	SDB

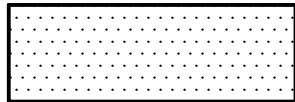
REF. SHT# C1.2



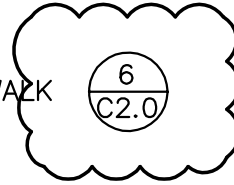
LEGEND



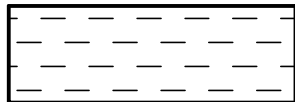
— 6" CONCRETE PAVEMENT



— 4" CONCRETE SIDEWALK



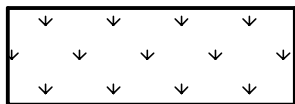
— 4" COLORED CONCRETE SIDEWALK
(COLOR BY ARCHITECT)



— 6" COLORED CONCRETE PAVEMENT
(COLOR BY ARCHITECT)



— GRAVEL PARKING LOT (SEE GRAVEL PARKING
NOTES ON THIS SHEET)

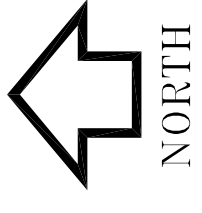


— LIMITS OF LAWN IRRIGATION

REGA NO. 141007

ISSUED FOR:	DATE:	BY:
REVISED CALL OUT NUMBER FOR CONCRETE SIDEWALK IN LEGEND	08/18/14	SDB

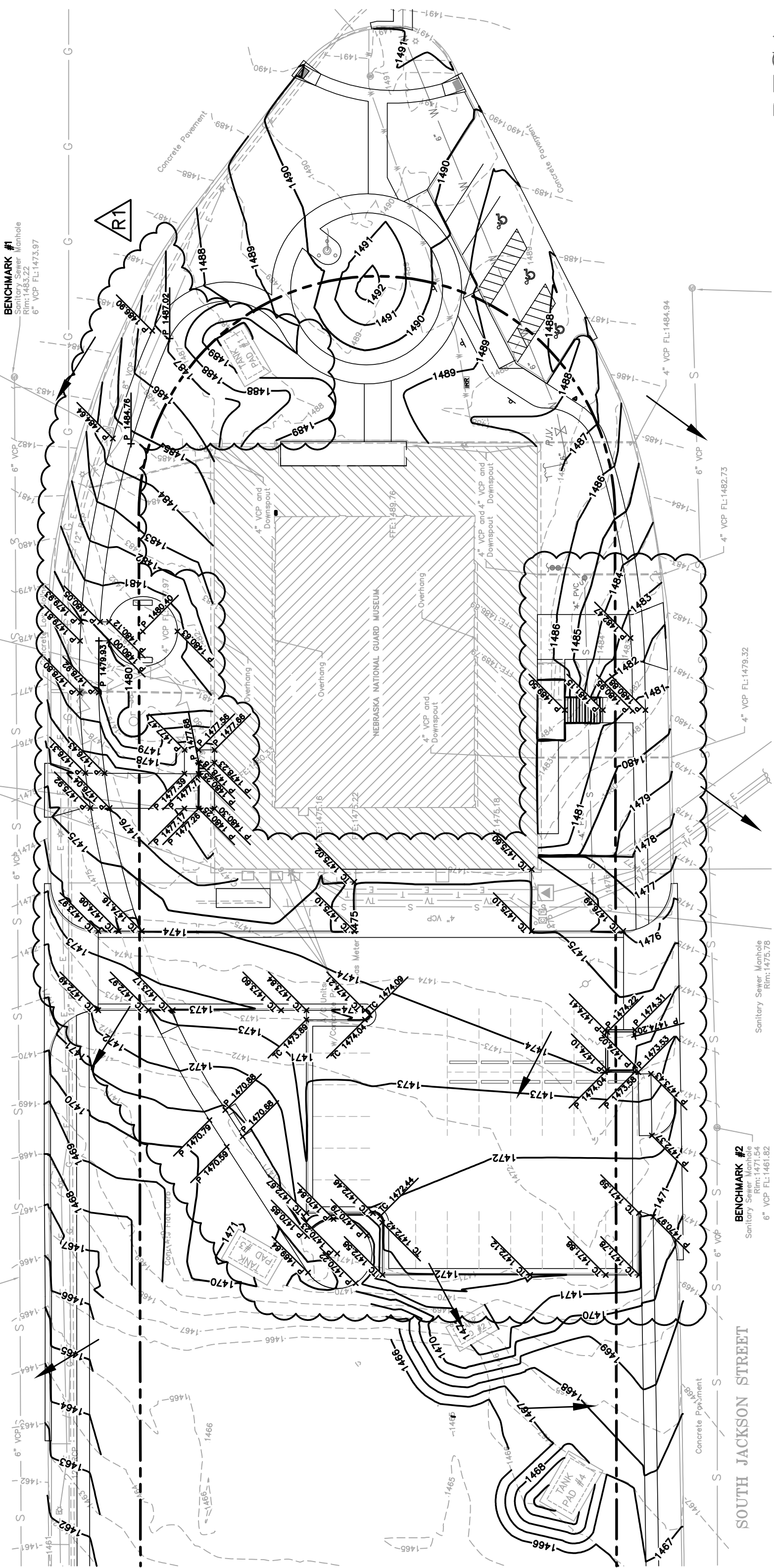
REF. SHT# C1.2



UNLESS NOTED, ALL GUTTER ELEVATIONS ARE 0.5' BELOW TOP OF CURB ELEVATION.

TH JACKSON STREET

Sanitary Sewer Cleanout
6" VCP FL:1456.74



Storm Sewer Manhole
Rim:1484.63
W 12" RCP FL:1480.85
ENE 10" IRON FL:1485.18
ESE 8" VCP FL:1482.11

BENCHMARK #1
Sanitary Sewer Manhole
Rim:1463.222
6" VCP FL:1473.97

4" VCP and Downspout (outlet direction unknown)
Concrete Pavement

4" VCP and Downspout

4" VCP and Downspout

4" VCP and Downspout

4" VCP and Downspout

4" VCP and Downspout

4" VCP and Downspout

Sanitary Sewer Manhole
Rim:1475.78

Sanitary Sewer Manhole
Rim:1475.78

BENCHMARK #2
Sanitary Sewer Manhole
Rim:1471.64
6" VCP FL:1461.82

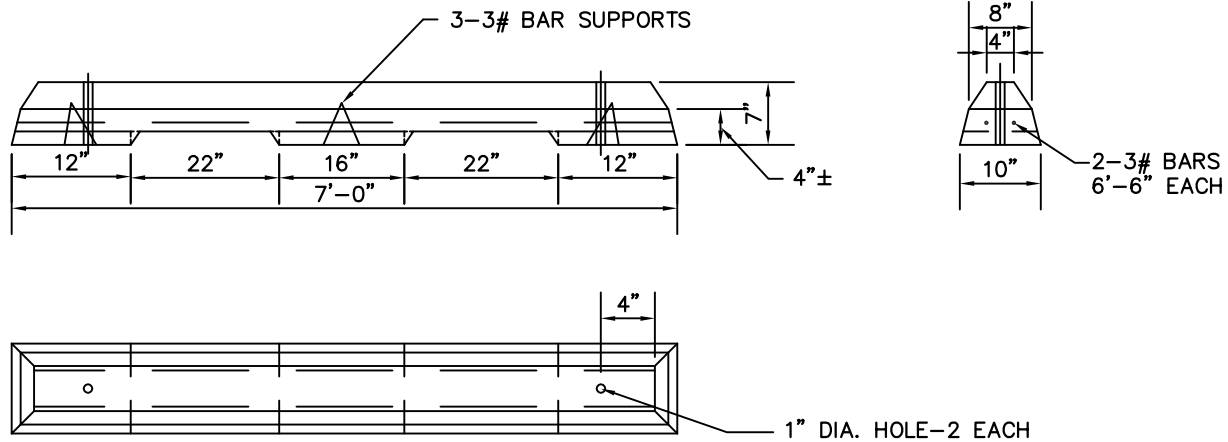
SOUTH JACKSON STREET

GRADING PLAN

REGA NO. 141007

ISSUED FOR:	DATE:	BY:
ADDED SPOT GRADES, GUTTER NOTE	8/18/14	NB

SCALE: 1" = 30'



NOTES:

1. CONCRETE WHEEL STOP SHALL BE ANCHORED WITH NO. 7 BARS 18" IN LENGTH.
2. EQUIVALENT SUBSTITUTIONS FOR PRECAST WHEEL STOPS WILL BE SUBMITTED TO THE ENGINEER FOR APPROVAL OR REJECTION. CONTRACTOR SHALL NOT INSTALL UNTIL APPROVAL HAS BEEN MADE BY THE ENGINEER.



PRECAST WHEEL STOP

NO SCALE

REGA NO. 141007

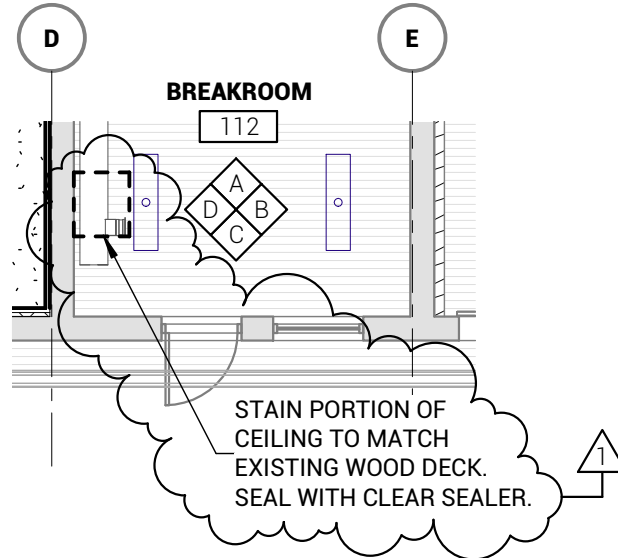
ISSUED FOR:	DATE:	BY:
ADDED DETAIL 9/C2.1 PRECAST WHEEL STOP TO PLANS	8/18/14	SDB

REF. SHT# C2.1



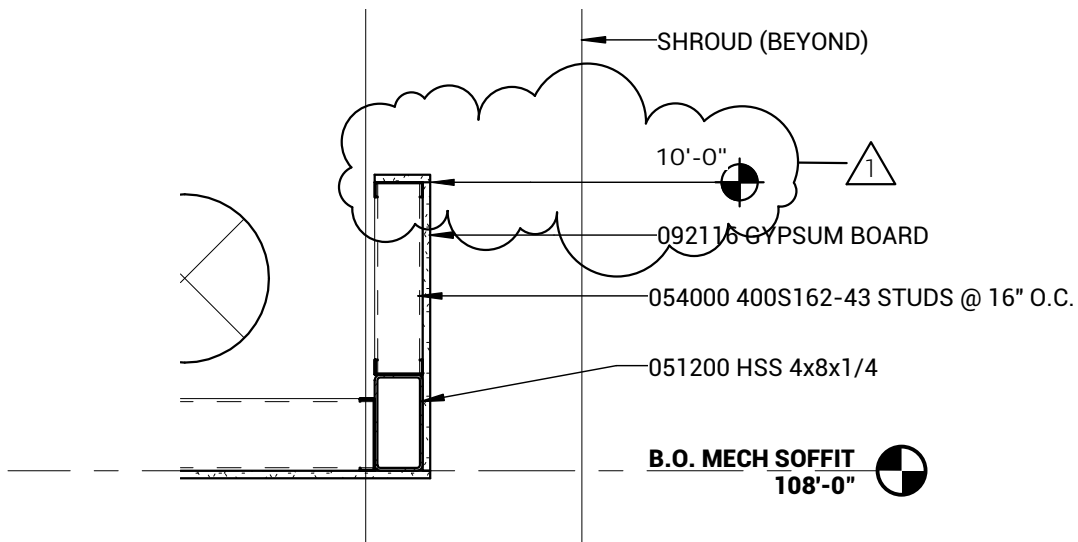
SEWARD MUSEUM REMODEL PHASE 2 ADDENDUM #1 - DRAWING 1

DATE: 08/19/14



A13R/A2.1 01 - FIRST FLOOR RCP

1/8" = 1'-0"



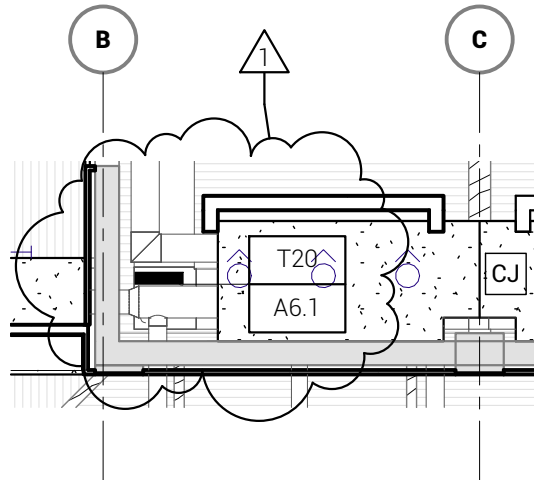
P1R/A6.1 WALL SECTION - BETWEEN SHROUDS

3/4" = 1'-0"



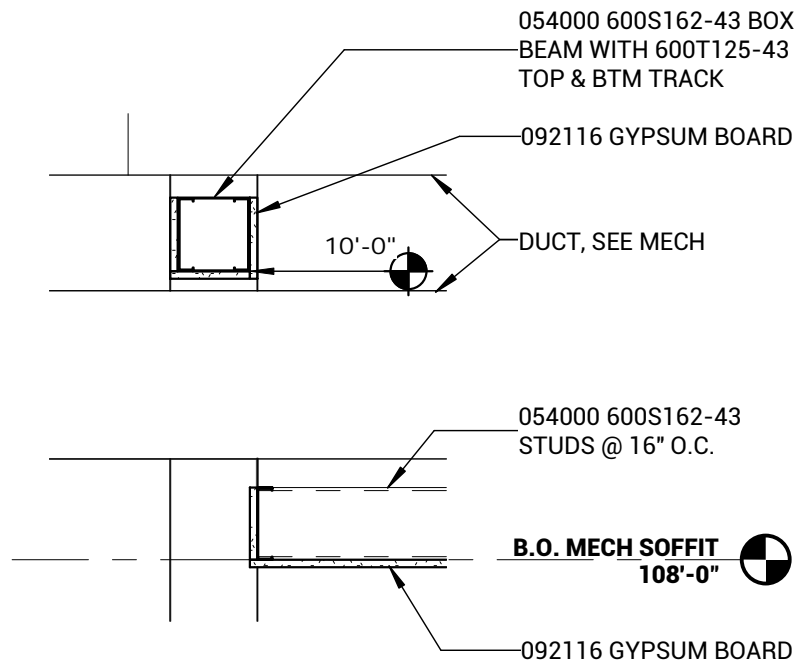
SEWARD MUSEUM REMODEL PHASE 2 ADDENDUM #1 - DRAWING 2

DATE: 08/19/14



A13/A2.1 01 - FIRST FLOOR RCP

1/8" = 1'-0"



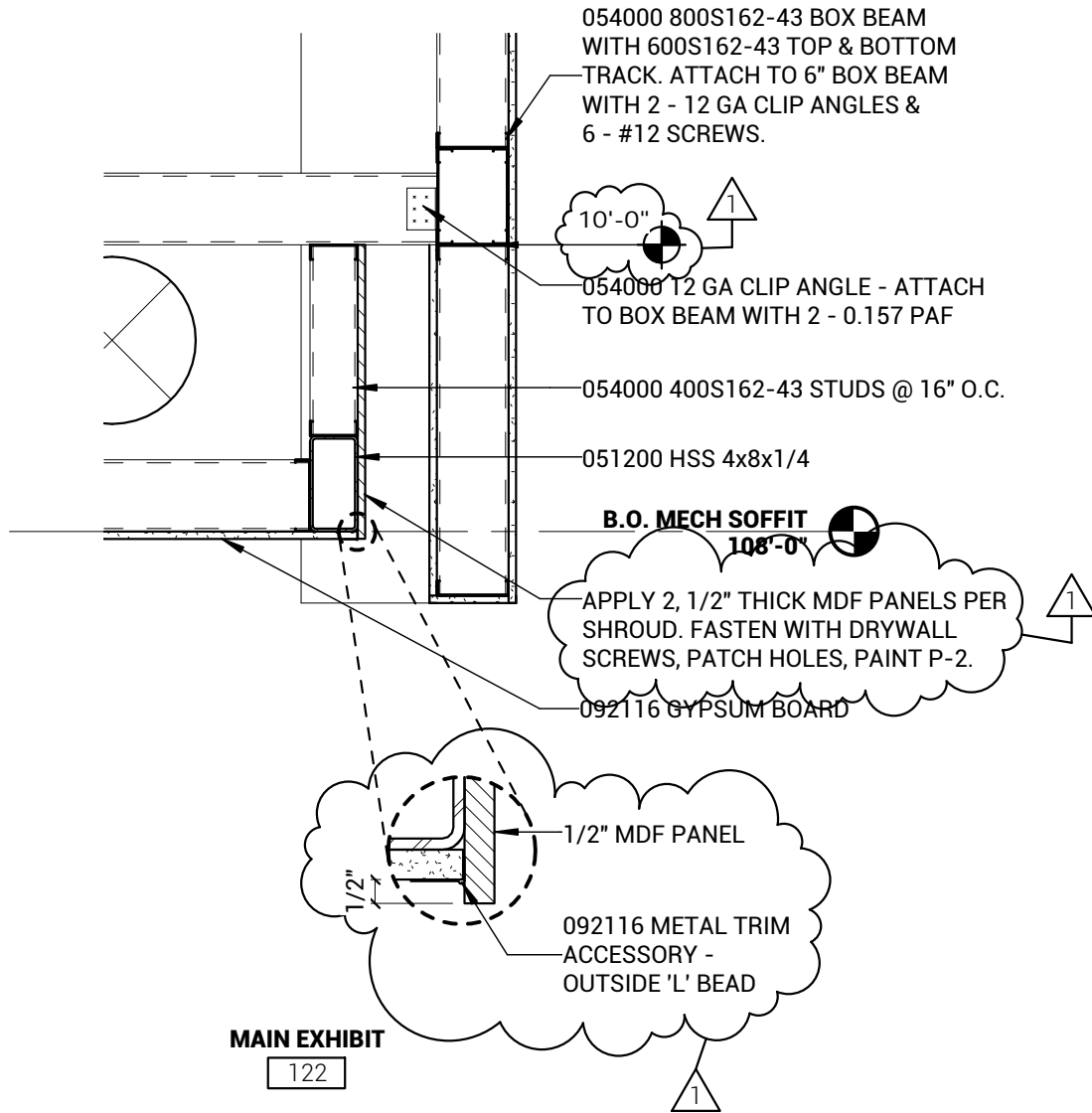
T20/A6.1 SECTION DETAIL - SOFFIT END

3/4" = 1'-0"



SEWARD MUSEUM REMODEL PHASE 2 ADDENDUM #1 - DRAWING 3

DATE: 08/19/14



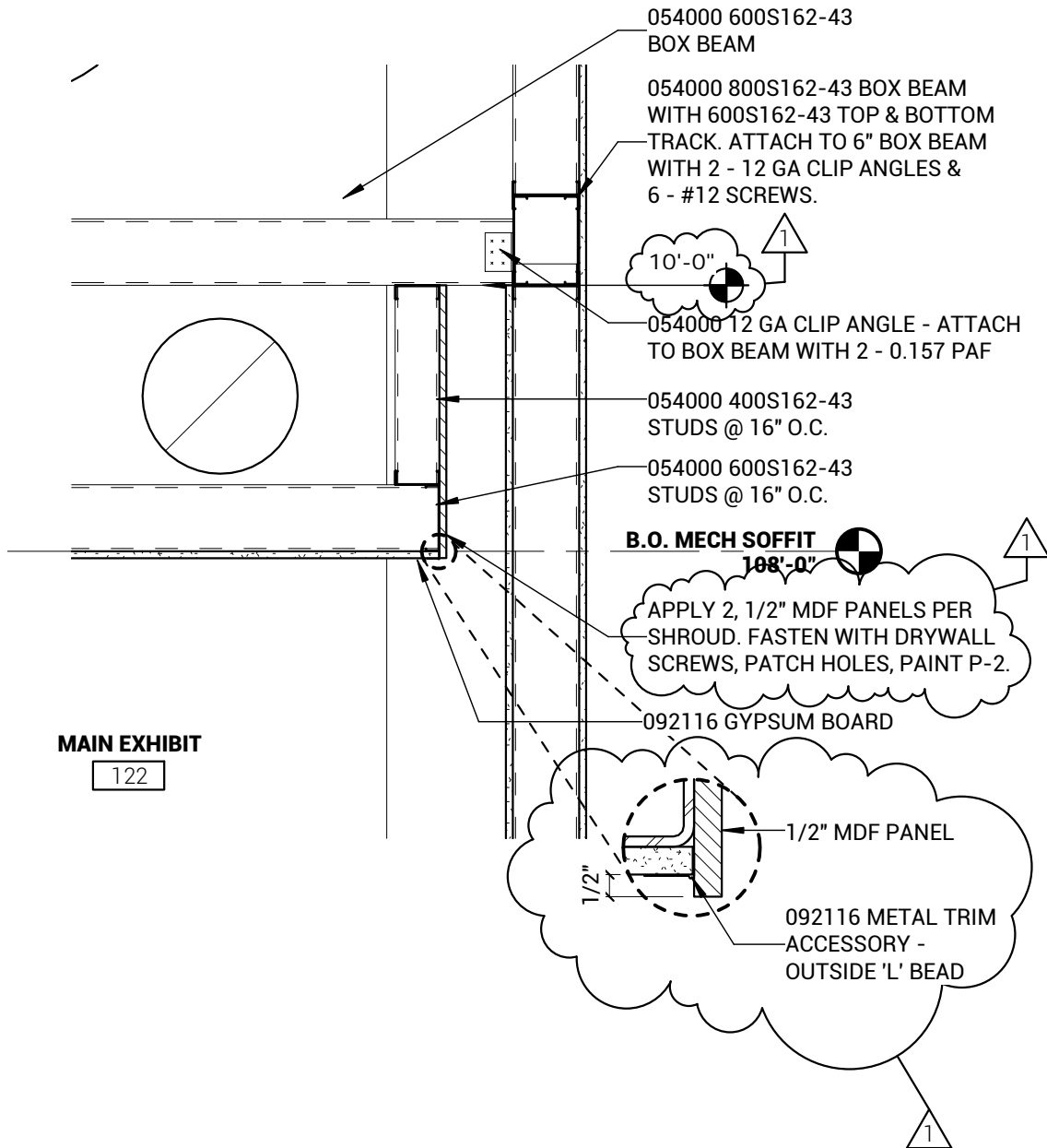
A7R/A6.1 WALL SECTION - ELEVATED SHROUD

3/4" = 1'-0"



SEWARD MUSEUM REMODEL PHASE 2 ADDENDUM #1 - DRAWING 4

DATE: 08/19/14



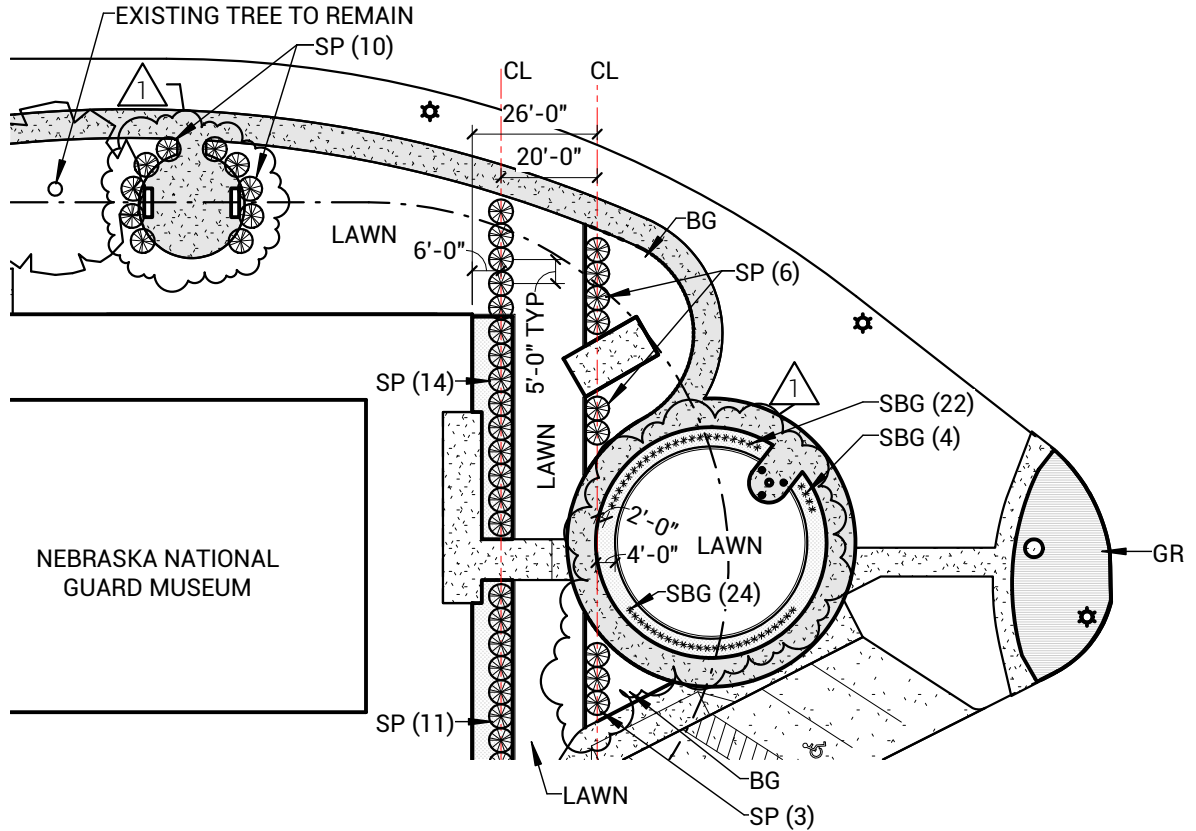
A1R/A6.1 WALL SECTION - SHROUD

3/4" = 1'-0"



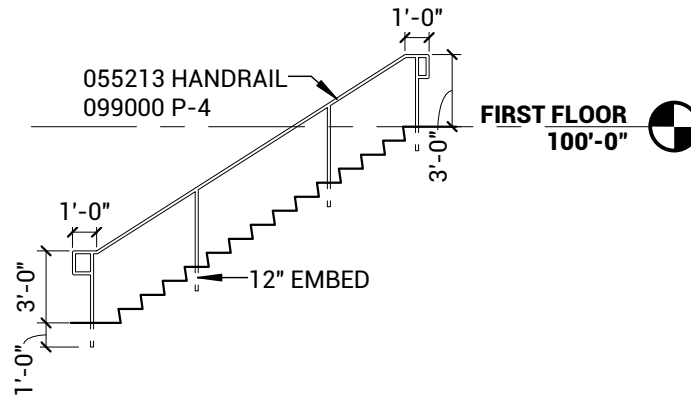
SEWARD MUSEUM REMODEL PHASE 2 ADDENDUM #1 - DRAWING 5

DATE: 08/19/14



A1R/A1.0A ARCHITECTURAL SITE PLAN - BASE BID

1" = 40'-0"



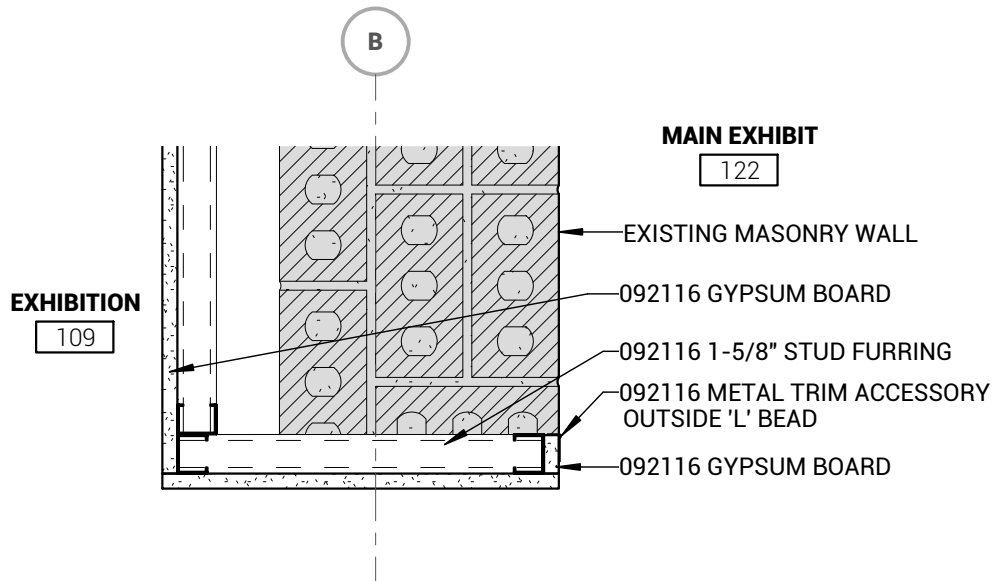
N17/A1.1 HANDRAIL ELEV - SOUTH STOOP

1/8" = 1'-0"



SEWARD MUSEUM REMODEL PHASE 2 ADDENDUM #1 - DRAWING 6

DATE: 08/19/14



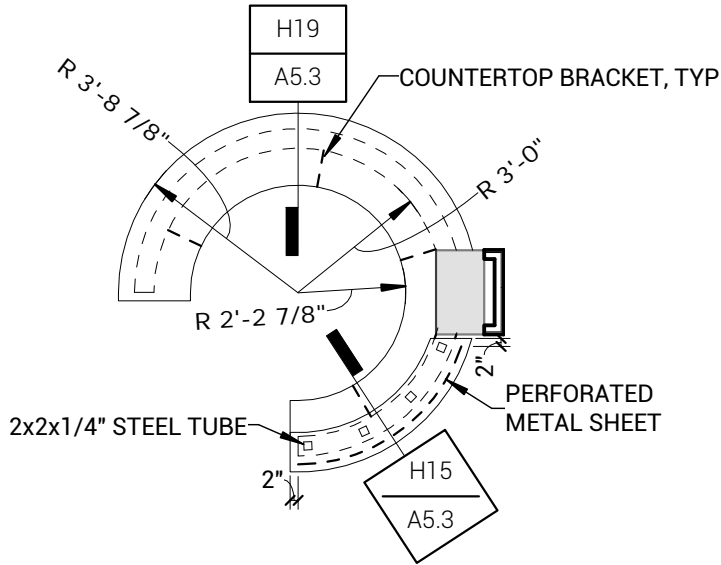
N20/A1.1 PLAN DETAIL - MASONRY OPENINGS, TYP

1 1/2" = 1'-0"



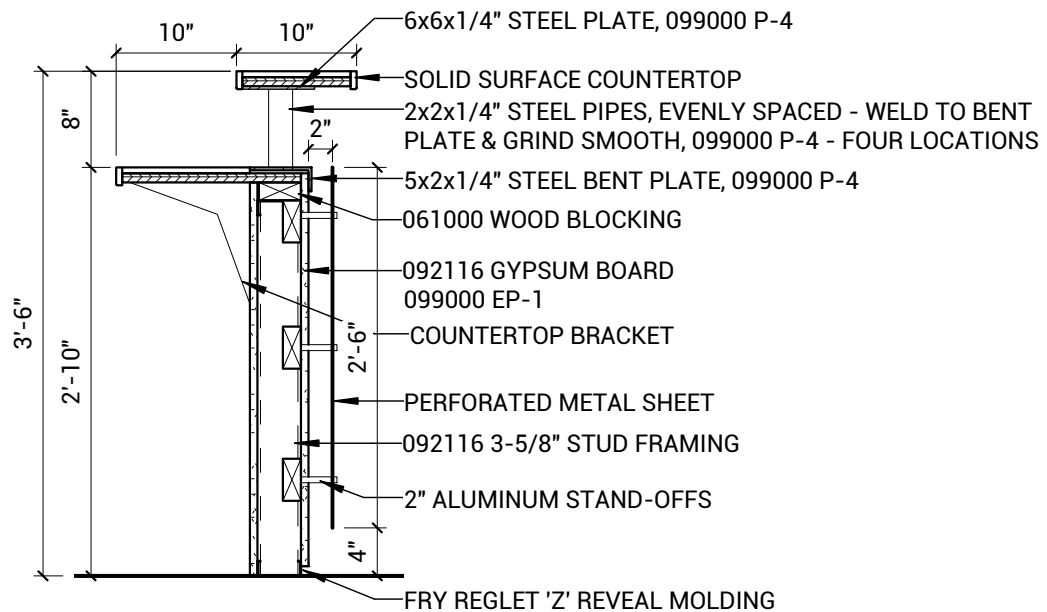
SEWARD MUSEUM REMODEL PHASE 2 ADDENDUM #1 - DRAWING 7

DATE: 08/19/14



H12R/A5.3 RECEP. DESK - PLAN

1/4" = 1'-0"



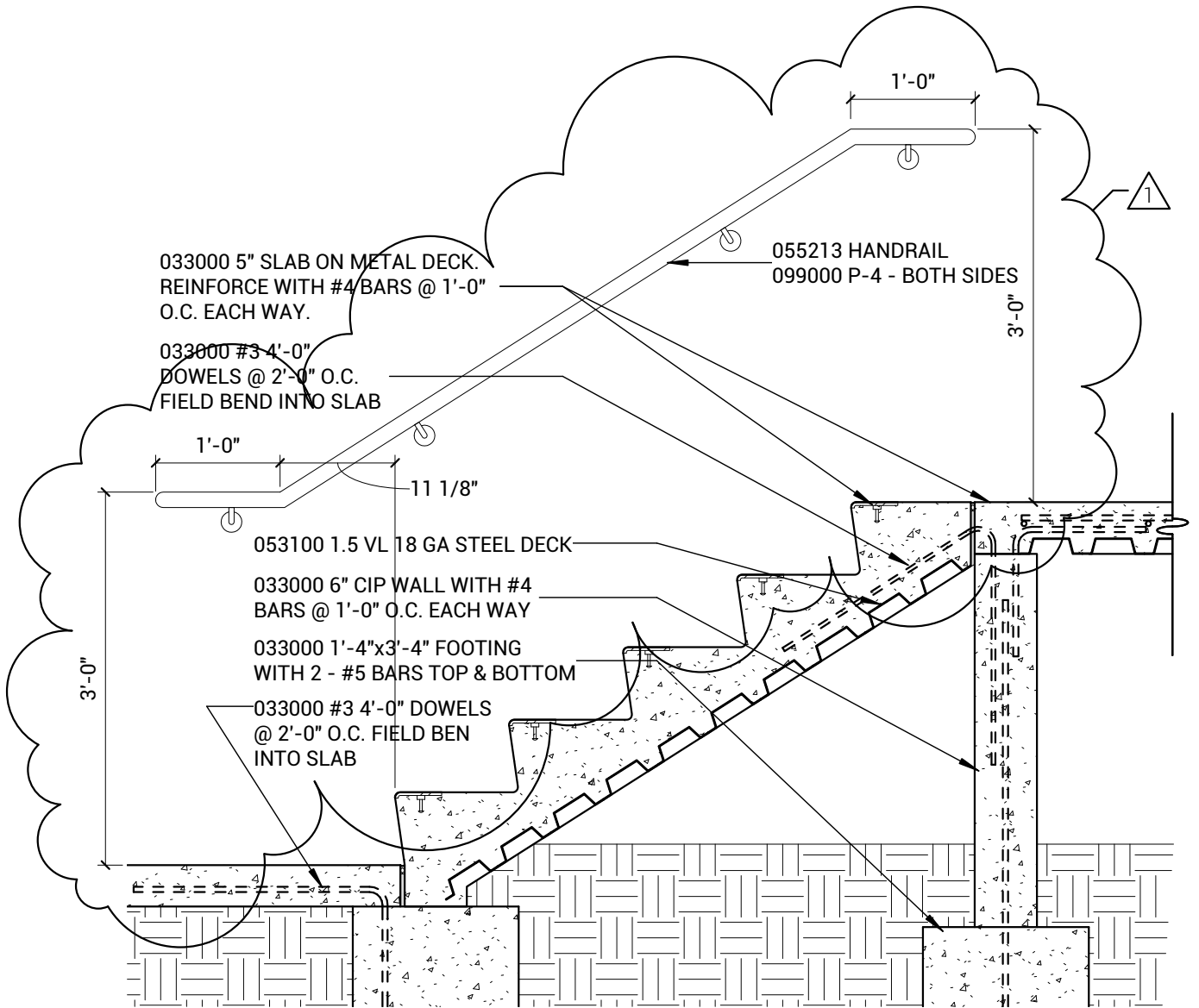
H15R/A5.3 RECEP. DESK - SECTION 01

3/4" = 1'-0"



SEWARD MUSEUM REMODEL PHASE 2 ADDENDUM #1 - DRAWING 8

DATE: 08/19/14



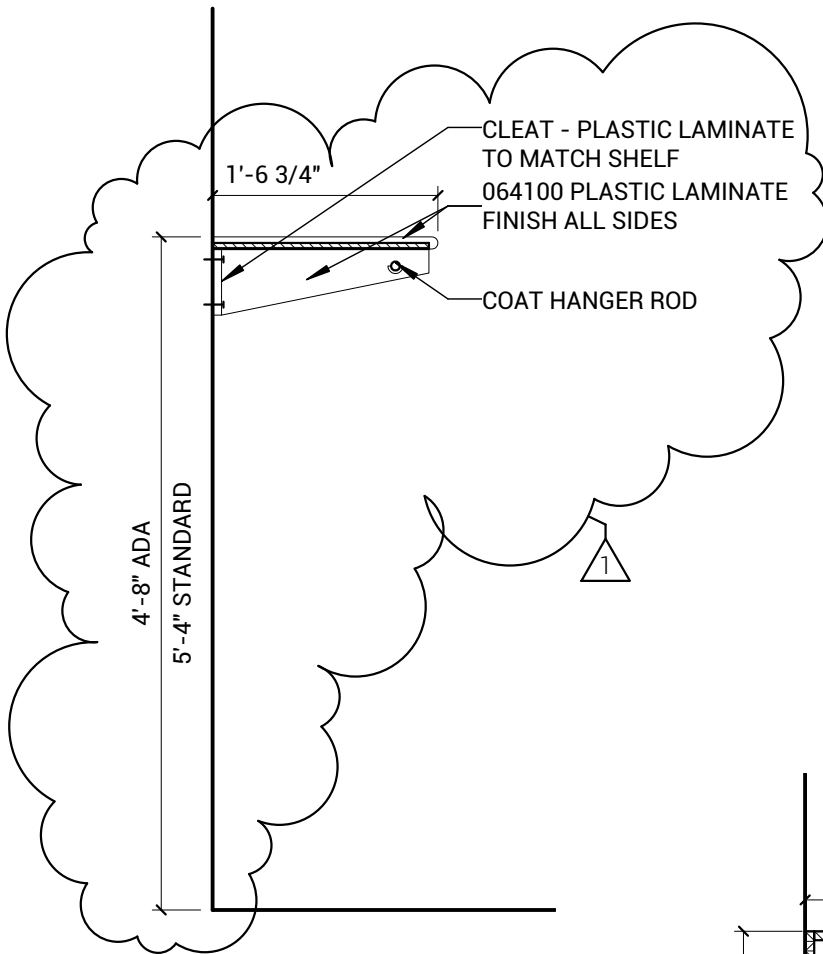
A1R/A5.2 SECTION DETAIL - NORTH STOOP

3/4" = 1'-0"



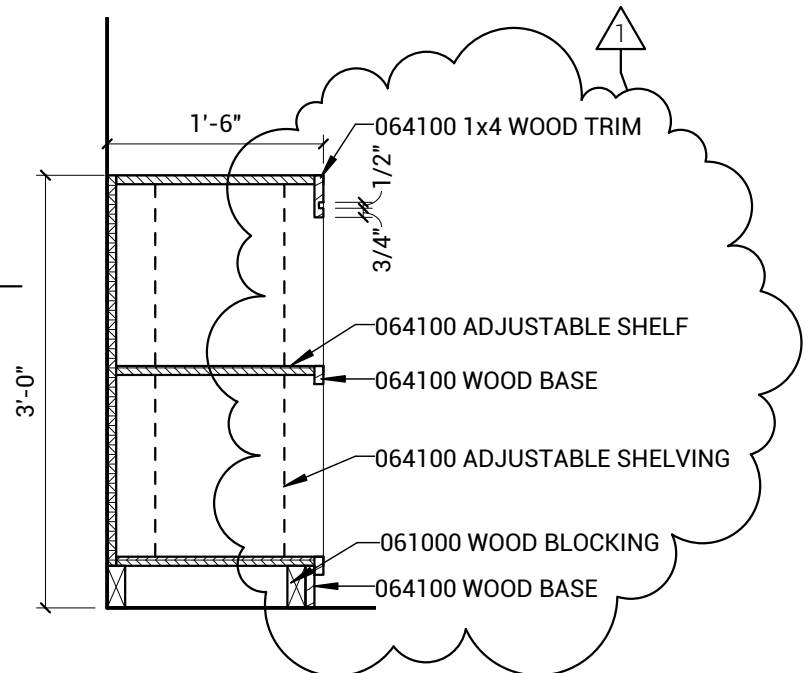
SEWARD MUSEUM REMODEL PHASE 2 ADDENDUM #1 - DRAWING 9

DATE: 08/19/14



H22R/A5.3 COAT ROD

3/4" = 1'-0"



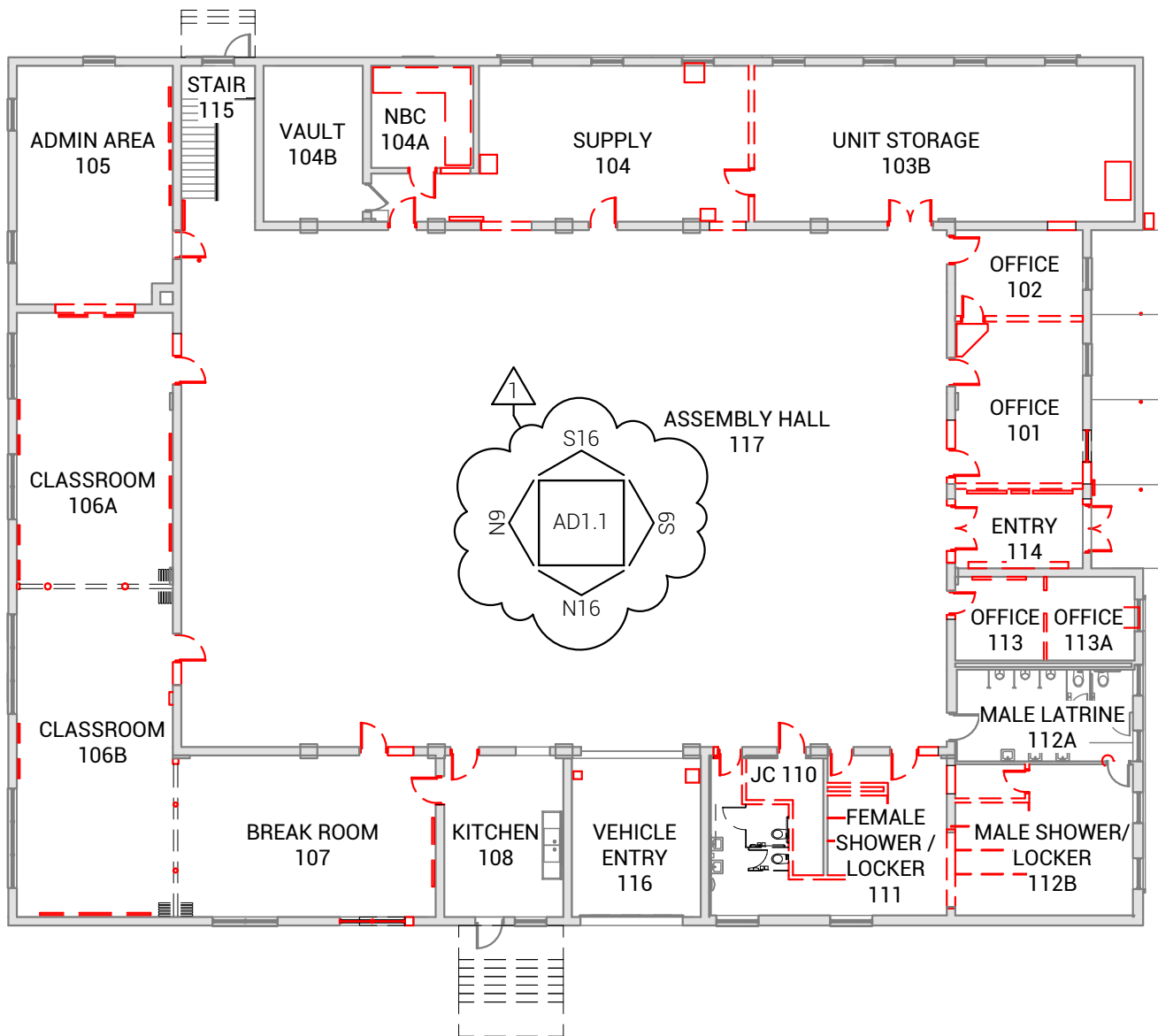
A18R/A5.3 BOOKCASE

3/4" = 1'-0"



SEWARD MUSEUM REMODEL PHASE 2 ADDENDUM #1 - DRAWING 10

DATE: 08/19/14



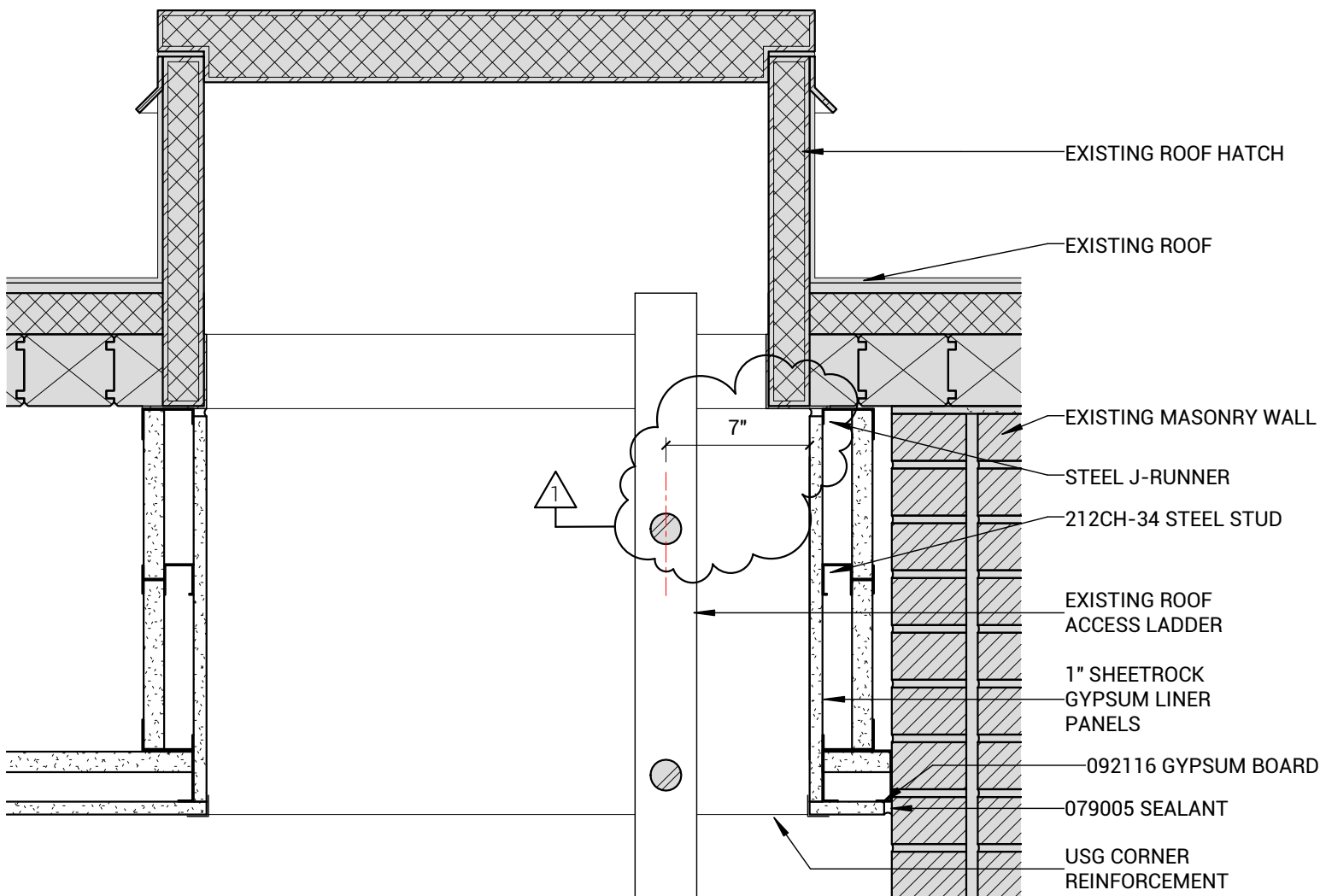
A12R/AD1.1 FIRST FLOOR PLAN - DEMOLITION

1" = 20'-0"



SEWARD MUSEUM REMODEL PHASE 2 ADDNEDUM #1 - DRAWING 11

DATE: 08/19/14



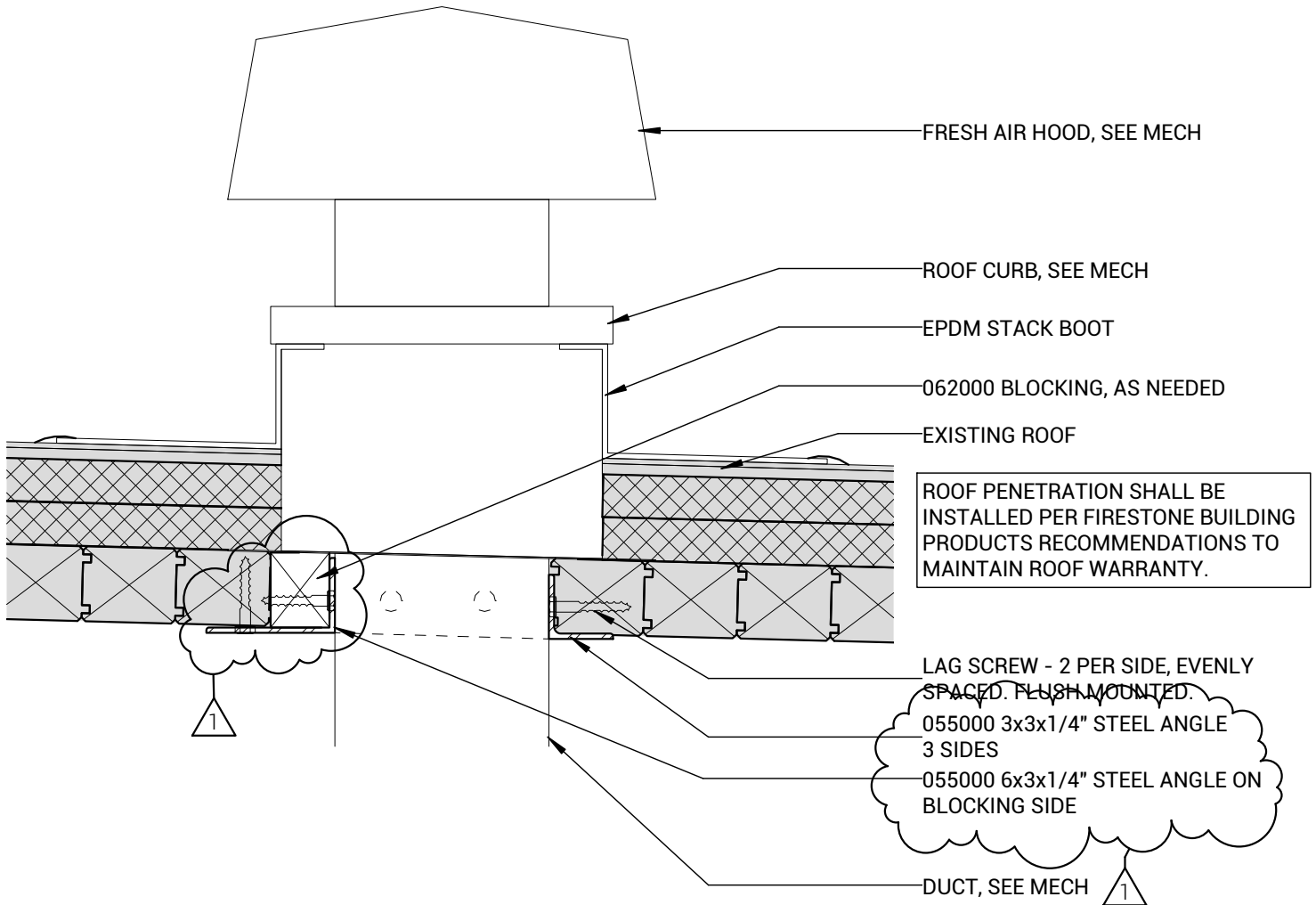
K4R/A1.2 SECTION DETAIL - ROOF HATCH

1 1/2" = 1'-0"



SEWARD MUSEUM REMODEL PHASE 2 ADDENDUM #1 - DRAWING 12

DATE: 08/19/14



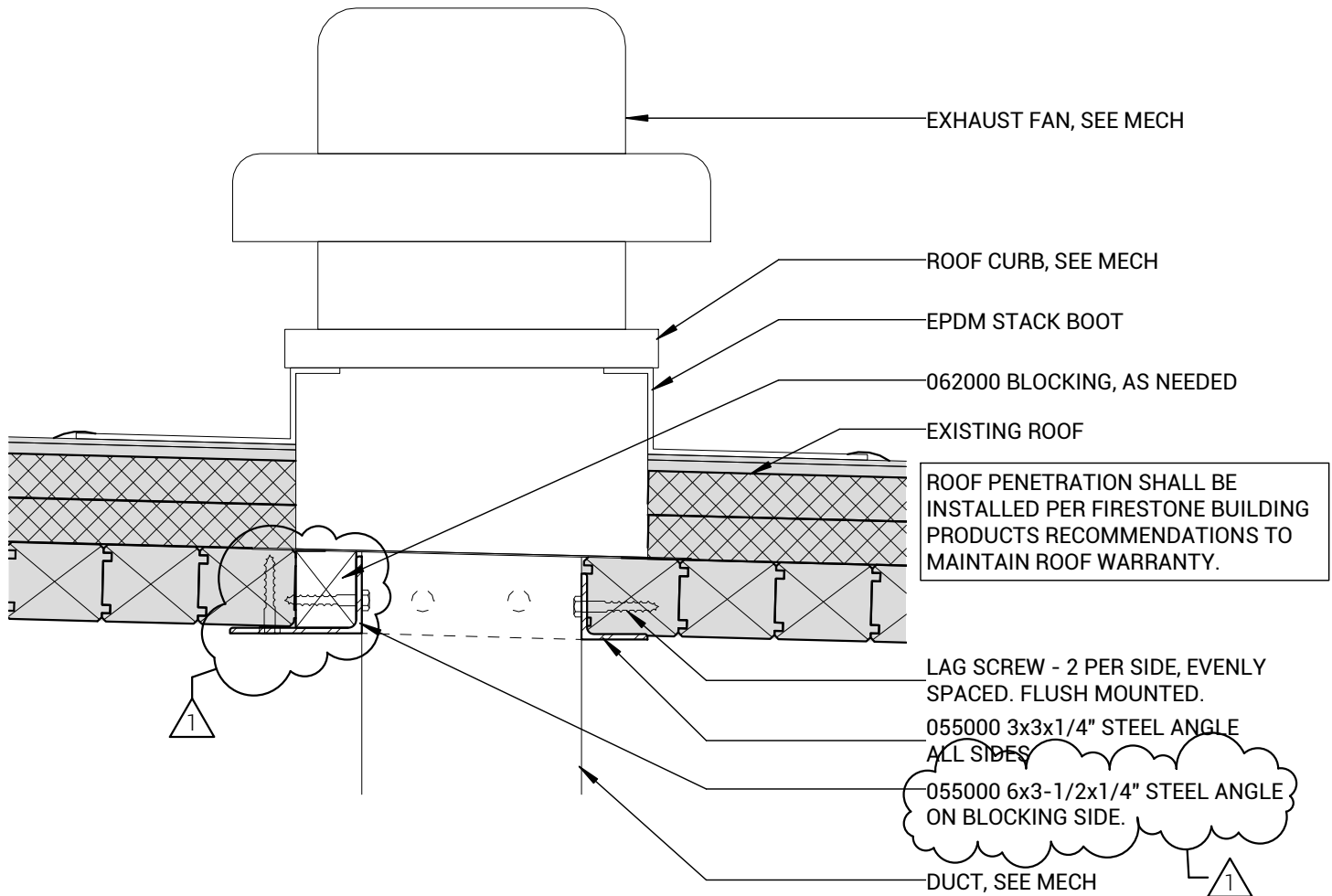
L19R/A1.3 SECTION DETAIL - FRESH AIR HOOD

1 1/2" = 1'-0"



SEWARD MUSEUM REMODEL PHASE 2 ADDENDUM #1 - DRAWING 13

DATE: 08/19/14



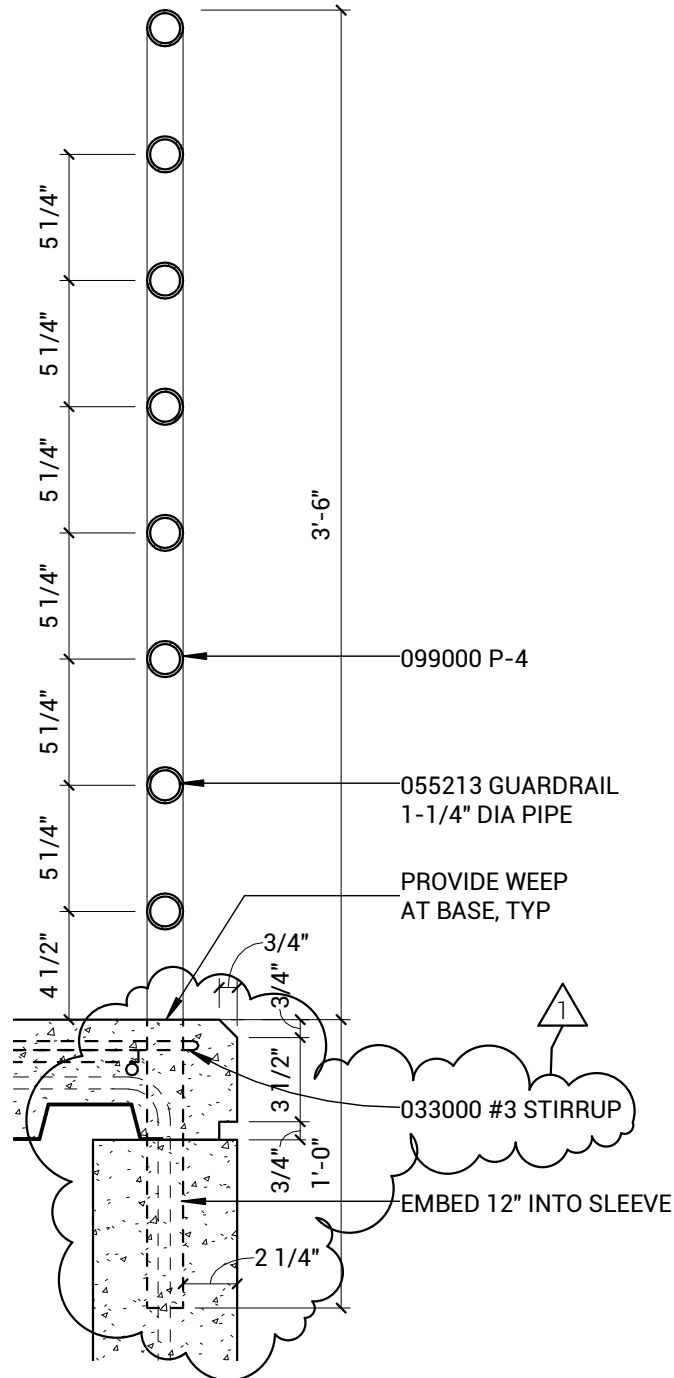
S19R/A1.3 SECTION DETAIL - ROOF EXHAUST VENT

1 1/2" = 1'-0"



SEWARD MUSEUM REMODEL PHASE 2 ADDENDUM #1 - DRAWING 14

DATE: 08/19/14

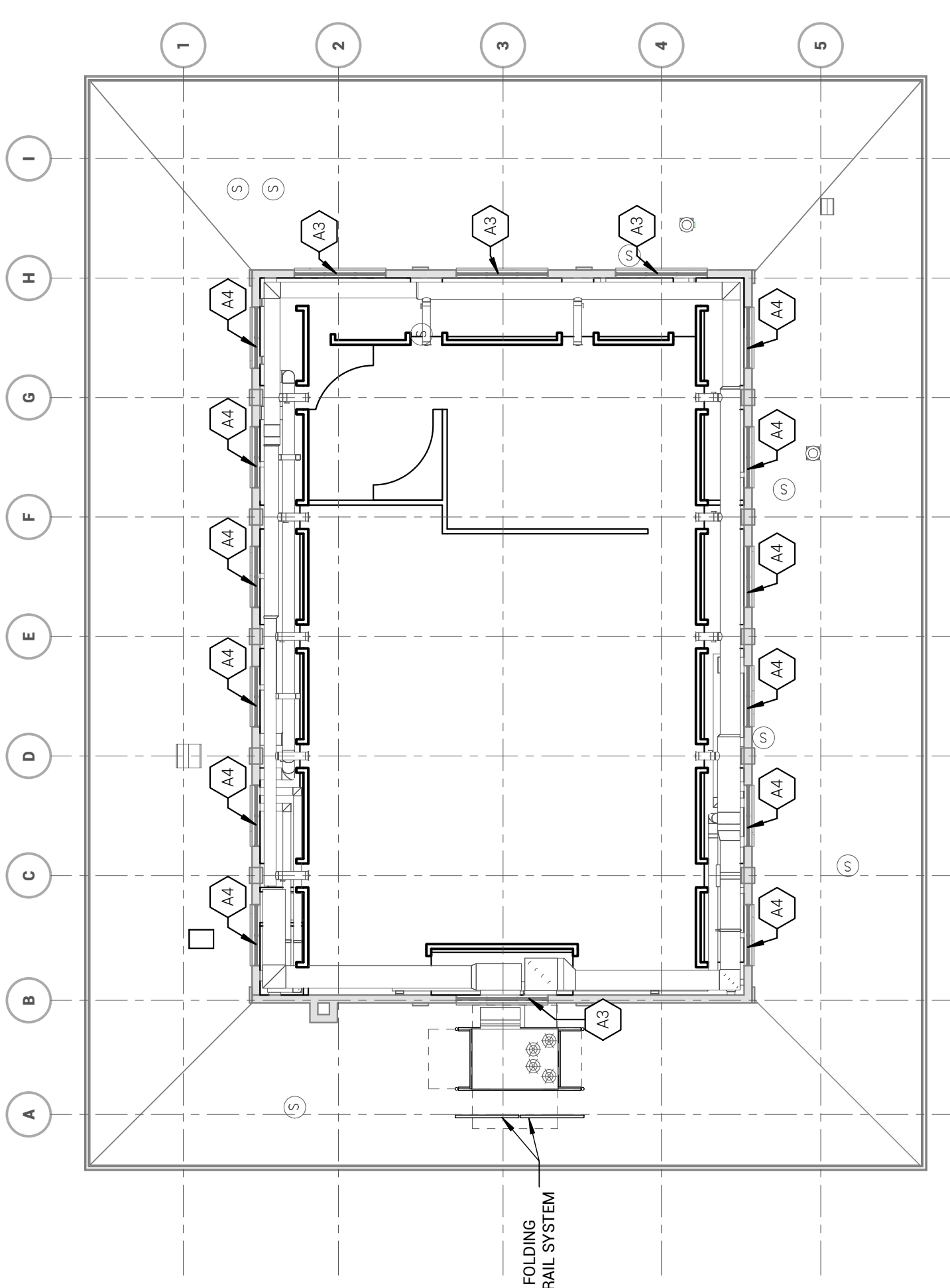


F1R/A5.2 GUARDRAIL SECTION - TYP

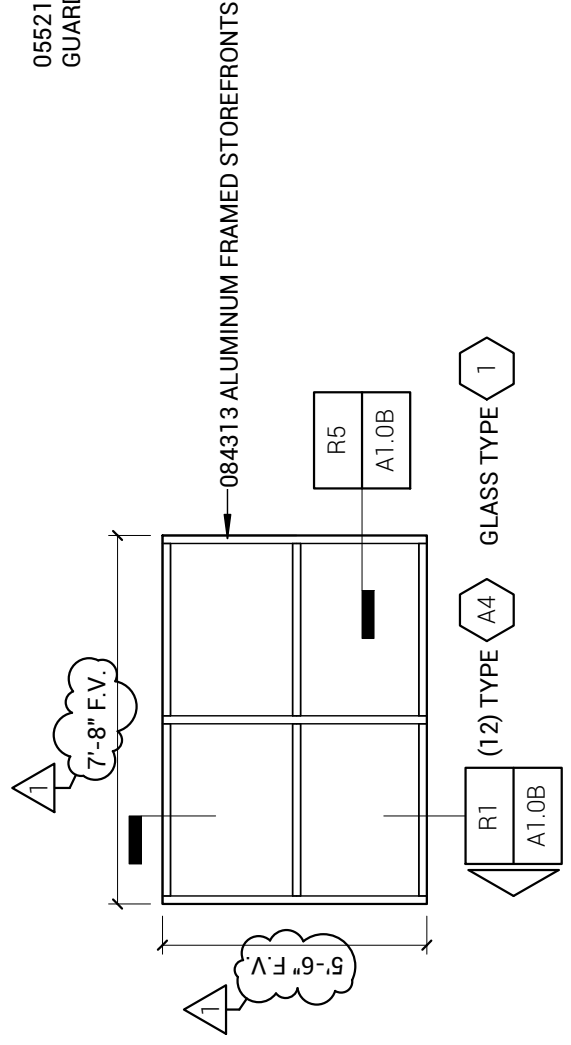
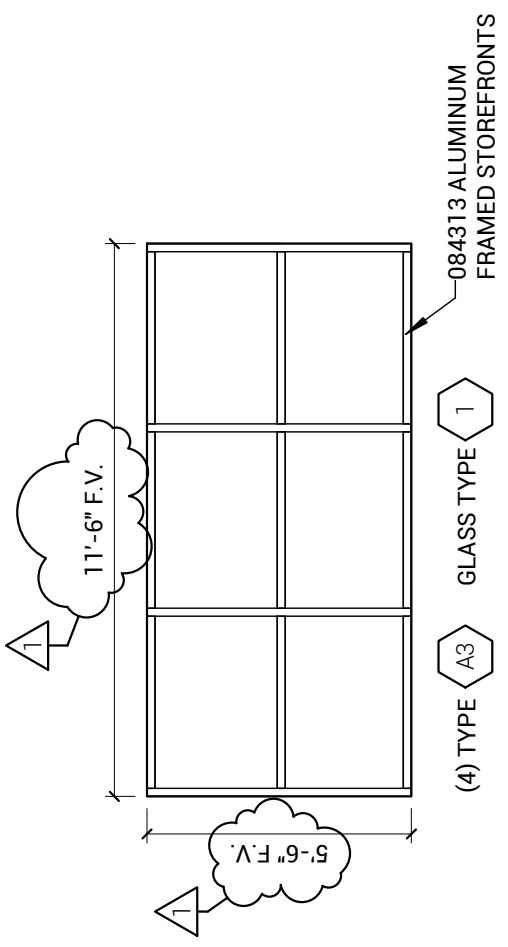
1 1/2" = 1'-0"



**SEWARD MUSEUM REMODEL PHASE 2
ADDENDUM #1 - DRAWING 15**
DATE: 08/19/14



055213 FOLDING
GUARDRAIL SYSTEM



N1R/A1.0B
1/4" = 1'-0"

FRAME ELEVS - ABI #5
1/4" = 1'-0"

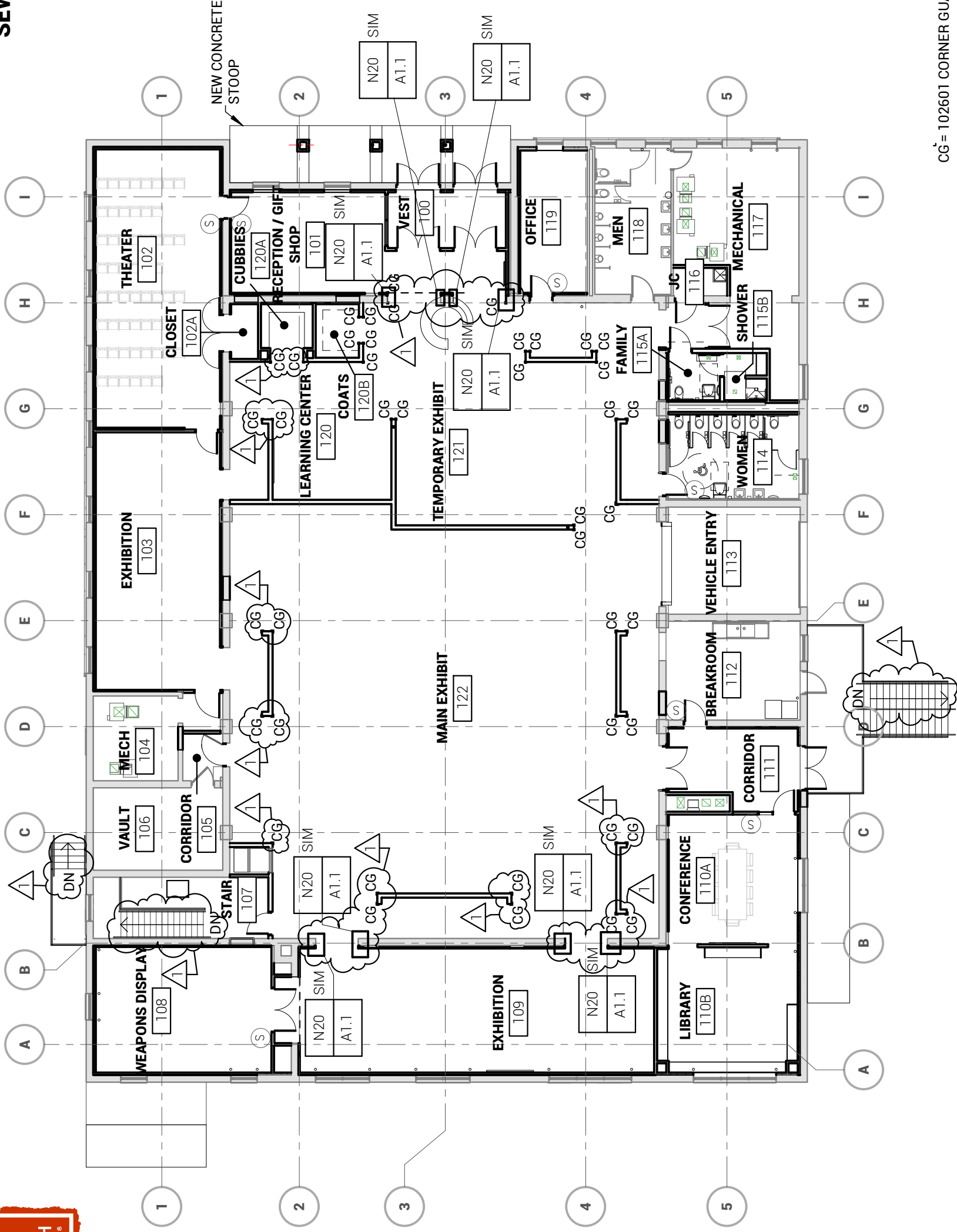
NOTE:
1. FRAME TYPES A3 & A4 PERTAIN TO ABI #5
2. REFER TO R1&R4/A2.1 FOR BASE BID CLERESTORY WINDOW REMEDIATION

A12R/A1.2
1/16" = 1'-0"

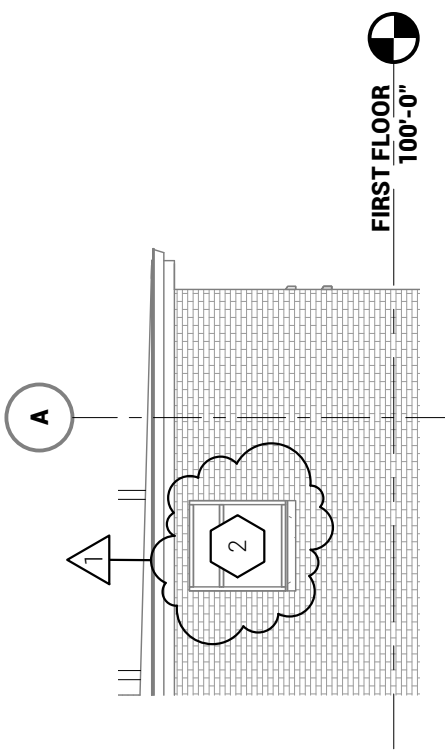
02 - CLERESTORY / SOFFIT PLAN



**SEWARD MUSEUM REMODEL PHASE 2
ADDENDUM #1 - DRAWING 16**
DATE: 08/19/14



CG = 102601 CORNER GUARD



FIRST FLOOR
100'-0"

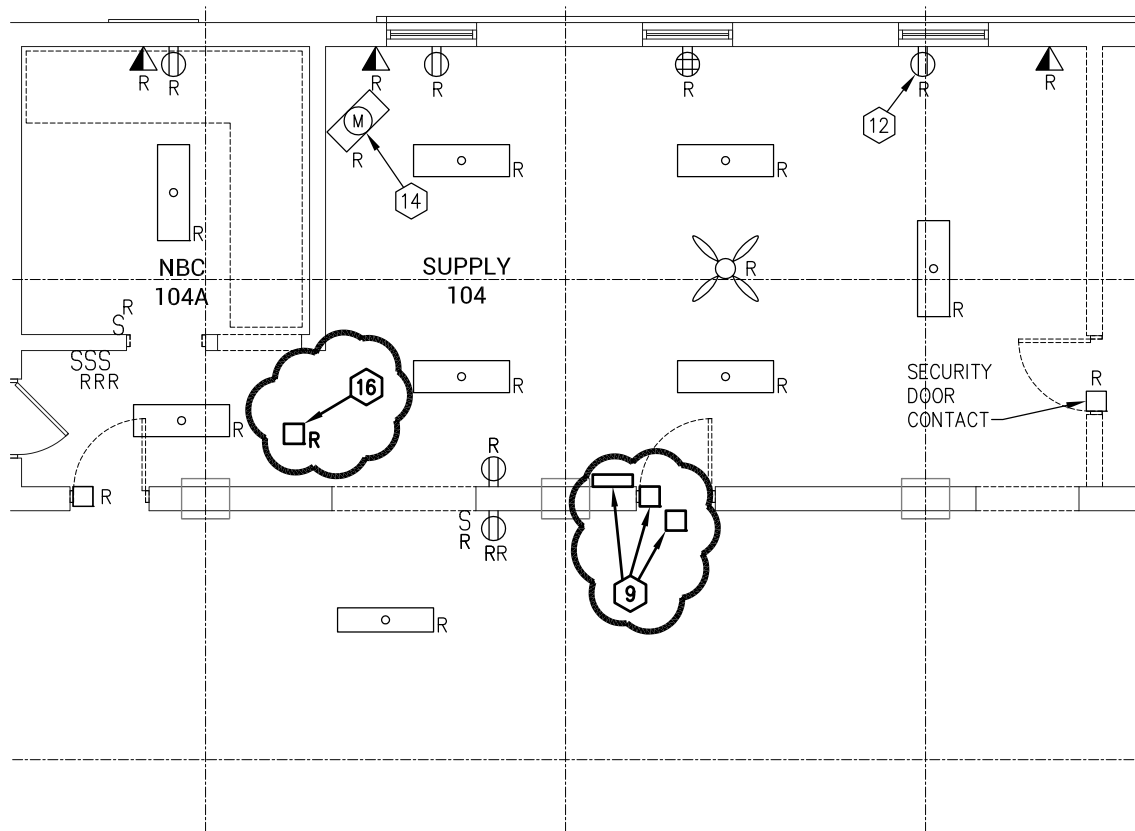
G12R/A3.1 NORTH ELEV
1/8" = 1'-0"

A12R/A1.1 FIRST FLOOR PLAN
1/16" = 1'-0"



SHEET NOTES

- REMOVE AND RELOCATE EXISTING SECURITY CONTACTS AND EQUIPMENT FOR IDS SYSTEM AND RELOCATE TO NEW DOOR AND SOUTH OF CORRIDOR 105. SEE SHEET E3.0 FOR NEW LOCATION.

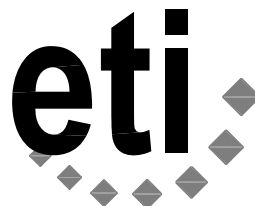


SEWARD MUSEUM
 REMODEL PHASE 2 - FIRST
 LEVEL FLOOR PLAN
 ELECTRICAL DEMOLITION



SCALE: 1/2" = 1'-0"

MAB



Engineering Technologies Inc.
 Mechanical & Electrical Building Solutions

825 M Street, Suite 200 | Lincoln, NE 68508
 P 402.476.1273 | F 402.476.1274

1111 N. 13th Street, Suite 216 | Omaha, NE
 68102 | P 402.330.2772 | F 402.330.2630

ETI Project No: (2013-173)

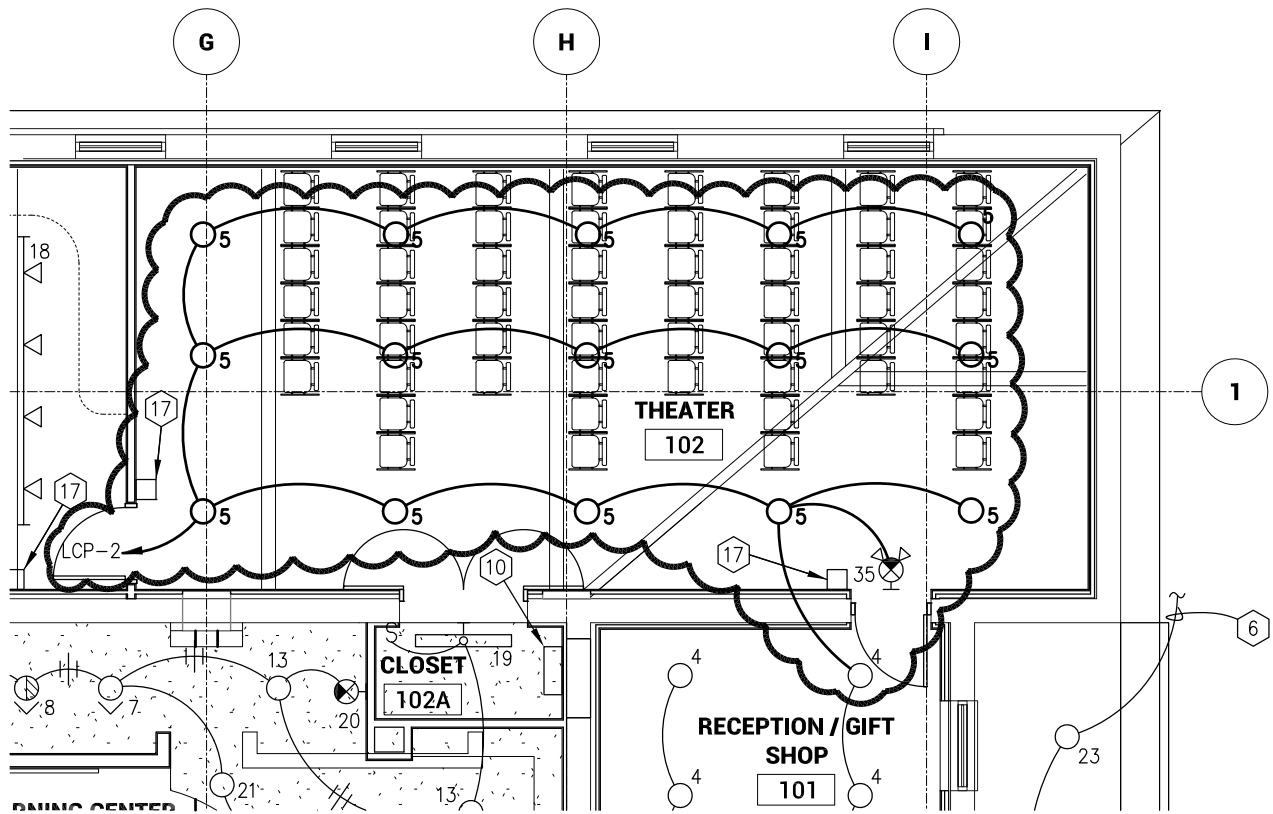
ADD #1

SHEET
E1.0

ATTACHMENT NO.

1

07/18/14

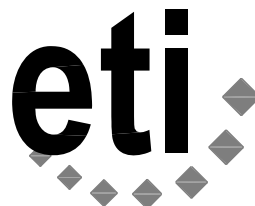


SEWARD MUSEUM
REMODEL PHASE 2



SCALE: 1/2" = 1'-0"

MAB



Engineering Technologies Inc.
Mechanical & Electrical Building Solutions

825 M Street, Suite 200 | Lincoln, NE 68508
P 402.476.1273 | F 402.476.1274

1111 N. 13th Street, Suite 216 | Omaha, NE
68102 | P 402.330.2772 | F 402.330.2630

ETI Project No: (2013-173)

ADD #1

SHEET

E2.0

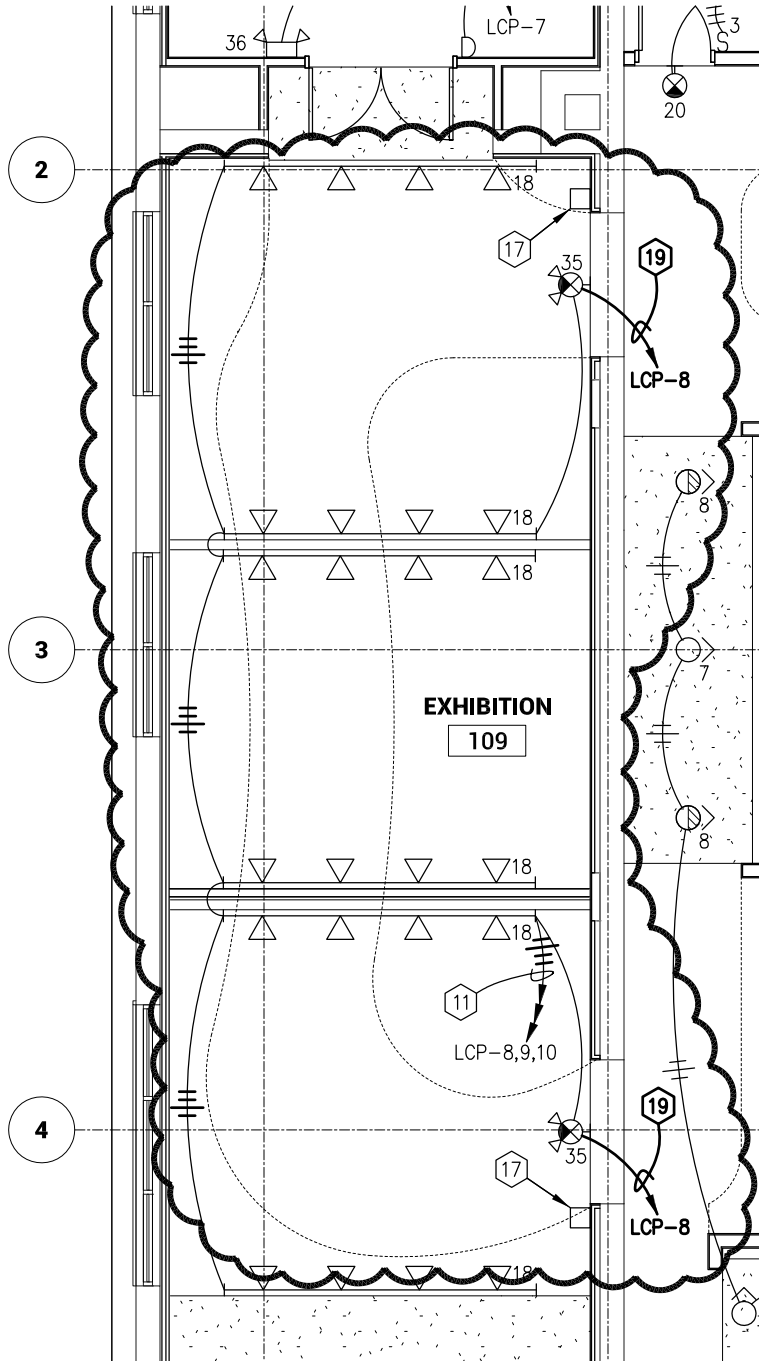
ATTACHMENT NO.

1

07/18/14

SHEET NOTES

19. CIRCUIT TO BE CONNECTED AHEAD OF LIGHTING CONTROL RELAY.



SEWARD MUSEUM
REMODEL PHASE 2



Engineering Technologies Inc.
Mechanical & Electrical Building Solutions

825 M Street, Suite 200 | Lincoln, NE 68508
P 402.476.1273 | F 402.476.1274

1111 N. 13th Street, Suite 216 | Omaha, NE
68102 | P 402.330.2772 | F 402.330.2630

ETI Project No: (2013-173)

ADD #1

SHEET
E2.0

ATTACHMENT NO.

2

07/18/14

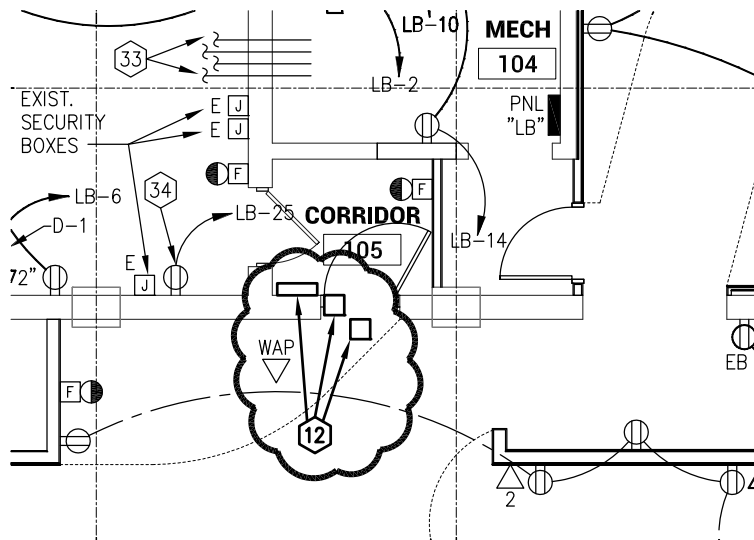
SCALE: 1/2" = 1'-0"

MAB

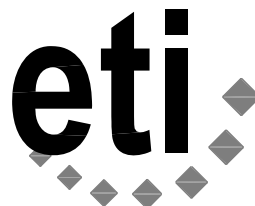


SHEET NOTES

- RELOCATED CONTACTS AND SECURITY EQUIPMENT FOR IDS SYSTEM. SEE SHEET E1.0 FOR PREVIOUS LOCATION. COORDINATE INSTALLATION WITH OWNER.



SEWARD MUSEUM
REMODEL PHASE 2



Engineering Technologies Inc.
Mechanical & Electrical Building Solutions

825 M Street, Suite 200 | Lincoln, NE 68508
P 402.476.1273 | F 402.476.1274

1111 N. 13th Street, Suite 216 | Omaha, NE
68102 | P 402.330.2772 | F 402.330.2630

ETI Project No: (2013-173)

ADD #1

SHEET

E3.0

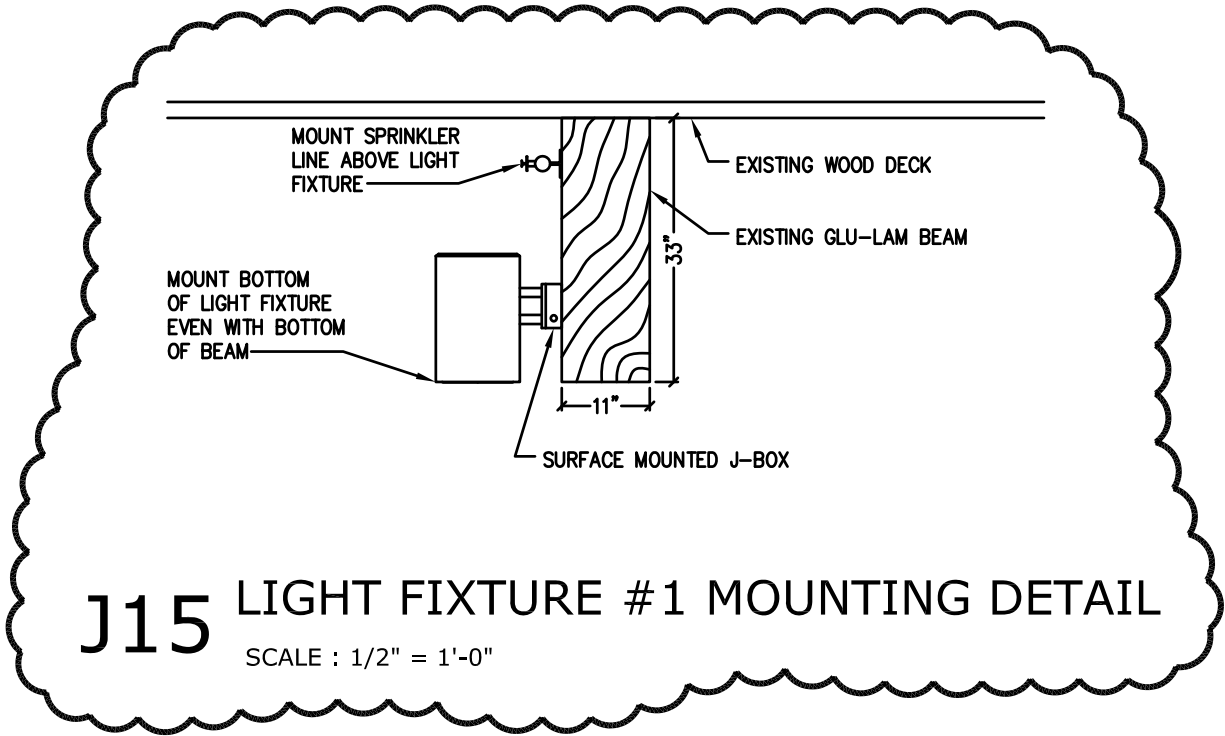
ATTACHMENT NO.

1

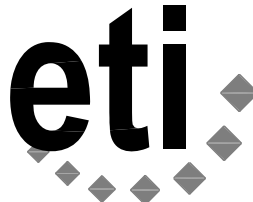
07/18/14

SCALE: 1/2" = 1'-0"

MAB



SEWARD MUSEUM
 REMODEL PHASE 2



Engineering Technologies Inc.
 Mechanical & Electrical Building Solutions

825 M Street, Suite 200 | Lincoln, NE 68508
 P 402.476.1273 | F 402.476.1274

1111 N. 13th Street, Suite 216 | Omaha, NE
 68102 | P 402.330.2772 | F 402.330.2630

ETI Project No: (2013-173)

ADD #1

SHEET

E4.1

ATTACHMENT NO.

1

07/18/14

SCALE: 1/2" = 1'-0"

MAB