

ADDENDUM NO. 1

LPS Security & Technology Ready Facilities Project "E"
Lincoln, Nebraska - 2014
OA Project No. 014-1187

TO ALL WHO HAVE RECEIVED PLANS AND SPECIFICATIONS FOR THE REFERENCED PROJECT.

TECHNICAL SPECIFICATIONS:

1. Refer to Section 270501 – COMMON WORK RESULTS FOR COMMUNICATIONS IN THE PROJECT SPECIFICATIONS.
 - a. Delete the Pre-Approved Components List in its entirety and replace with attached.

Drawings:

1. Refer to the Drawings, Sheet No. 000.C36
 - a. Reference attachment 000.C36-1 for added notes to detail 12.
2. Refer to the Drawings, Sheet No. 130.T00.A
 - a. Reference attachment 130.T00.A-1 12 Strand SM fiber to be installed in wall mount fiber panel.
3. Refer to the Drawings, Sheet No. 135.T01.B
 - a. Reference attachment 135.T01.B-1 for cable change.
4. Refer to the Drawings, Sheet No. 135.01.A
 - a. Reference attachment 135.T01.A-1 for cable change.
5. Refer to the Drawings, Sheet No. 142.T31
 - a. Reference attachment 142.T31-1 for fiber riser.
6. Refer to the Drawings, Sheet No. 161.T01.A
 - a. Reference attachment 161.T01.A-1 for HDMI location.
7. Refer to the Drawings, Sheet No. 161.T02.A
 - b. Reference attachment 161.T02.A-1 for additional SM Fiber information.
8. Refer to the Drawings, Sheet No. 217.T01.B
 - a. Reference attachment 217.T01.B-1 for delete WAP location.

See Attachments.

Pre-Approved Primary Components List - Package E

Lincoln Public Schools - Security Technology Ready Classroom Facilities Projects

Schools:

Submittal Date:

Last Updated: 8/6/2014

General Contractor:

Communications Sub-Contractor:

Bid Package No.:

Submittal No.:

27 11 01	COMMUNICATIONS EQUIPMENT ROOMS									
	7' Rack, Black	Uniprise	RK3-45A	760082479	http://www.commscope.com/catalog/enterprise/2147486193/prduct_details.aspx?id=26468					
	Vertical cable management, Front and Back - 6" W (Provide where matching existing or where indicated on the detail Drawings)	Uniprise	VCM-DS-84-6	760072785	https://www.anixter.com/north-america/us/en/product-detail/VCM-DS-84-6-COMMSCOPE-UNIPRISE-SOLUTIONS.365813.html					
	Vertical cable management, Front and Back - 8" (Preferred LPS Standard unless indicated otherwise on the detail drawings)	Uniprise	VCM-DS-84-8	760072793	https://www.anixter.com/north-america/us/en/product-detail/VCM-DS-84-8-COMMSCOPE-UNIPRISE-SOLUTIONS.365815.html					
	horizontal cable management, 2RU	Uniprise	HTK-19-SS-2U	760072959	http://www.commscope.com/catalog/enterprise/2147486211/prduct_details.aspx?id=26576					
	48 port patch panels - Cat 6 Flat	Uniprise	UNP-U-610-2U-48	760180059	http://www.commscope.com/catalog/enterprise/2147486166/prduct_details.aspx?id=33911					
	48 port patch panels - Cat 6A Flat	Uniprise	UNP-U-10G-2U-48	760162818	http://www.commscope.com/catalog/enterprise/2147486166/prduct_details.aspx?id=42					
27 13 23	OPTICAL BACKBONE CABLING									
	12 Strand Multimode Fiber Optic Cable, Aqua OM3 Lazerspeed 300 Non-Plenum	Uniprise	R-012-DS-5L-FSUAQ	700208150	http://www.commscope.com/catalog/wireless/4294967850/product_details.aspx?id=19470					
	12 Strand Single Mode Fiber Optic Cable, Yellow Non-Plenum	Uniprise	R-012-DS-8W-FSUYL	760004440	http://www.commscope.com/catalog/enterprise/2147486252/prduct_details.aspx?id=19466					
	12 Strand Multimode Fiber Optic Cable, Aqua Lazerspeed 300 Plenum	Uniprise	P-012-DS-5L-FSUAQ	700009731	http://www.commscope.com/catalog/enterprise/2147486252/prduct_details.aspx?id=19592					
	12 Strand Single Mode Fiber Optic Cable, Yellow Plenum	Uniprise	P-012-DS-5L-FSUAQ	760004358	http://www.commscope.com/catalog/enterprise/2147486252/prduct_details.aspx?id=19588					
	P-012-OD-5K-FSUBK Indoor/Outdoor Plenum Distribution Cable, 12 fiber single-unit	CommScope	P-012-OD-5K-FSUBK	760037432	http://www.commscope.com/catalog/enterprise/2147486253/prduct_details.aspx?id=19284					Only for special situations as noted on the detail drawings
	Fiber Optic Shelf 2U - Sliding	Uniprise	RFE-SLC-IS-EMT-BK/1U-PNL	760147439	http://www.commscope.com/catalog/enterprise/2147486268/prduct_details.aspx?id=32886					
	Fiber Optic Shelf 1U - Sliding	Uniprise	RFE-SLC-IS-EMT-BK/2U-PNL	7601447447	http://www.commscope.com/catalog/enterprise/2147486268/prduct_details.aspx?id=32879					
	Wall-Mount Fiber Optic Shelf	Uniprise	WBE-EMT-BK-4P-PNL	760147504	http://www.commscope.com/catalog/enterprise/2147486287/prduct_details.aspx?id=33135					
	Ganged Adapter w/6 SC 50um Ports SM	Uniprise	PNL-BK-012-MFA-SC02-BL	760027714	http://www.commscope.com/catalog/enterprise/2147486274/prduct_details.aspx?id=45687					
	SC MM Fiber Connector	Uniprise	MFC-SCR-09-BG	760007070	http://www.commscope.com/catalog/enterprise/2147486284/prduct.aspx?id=130&sort=null&nrr=null&ShowObsolete=false&filter=1140 3 0 11142 2 0 11119 1 0 1					
	SC SM Fiber Connector	Uniprise	SFC-SCR-09-BL	760007112	http://www.commscope.com/catalog/enterprise/2147486274/prduct_details.aspx?id=21122					
27 15 13	HORIZONTAL CABLING									
	Category 6A Cable, Blue, Non-Plenum	Uniprise	10GN4-BL	8441604/10	http://www.commscope.com/catalog/enterprise/2147486112/prduct_details.aspx?id=6088					
	Category 6A Cable, Blue, Plenum	Uniprise	10G4-BL	8765404/10	http://www.commscope.com/catalog/enterprise/2147486112/prduct_details.aspx?id=6087					
	Category 6 cable, Blue, Non-Plenum	Uniprise	65N4+-BL	874801410	http://www.commscope.com/catalog/enterprise/2147486112/prduct_details.aspx?id=37412					

Pre-Approved Primary Components List - Package E

Lincoln Public Schools - Security Technology Ready Classroom Facilities Projects

Schools:

Submittal Date:

Last Updated: 8/6/2014

General Contractor:

Communications Sub-Contractor:

Bid Package No.:

Submittal No.:

	Category 6 cable, Blue, Plenum	Uniprise	6504+-BL	874801410	http://www.commscope.com/catalog/enterprise/2147486112/prduct_details.aspx?id=37388	
	Category 6 U/UTP filled Cable, outdoor direct burial, black jacket, 4 pair count	CommScope	6NF4+ BLACK	4665904/10	http://www.commscope.com/catalog/enterprise/2147486112/prduct_details.aspx?id=34214	Only for special situations as noted on the detail drawings
	Category 6 jacks, Gray	Uniprise	UNJ600-GY	CC00208911	http://www.commscope.com/catalog/enterprise/2147486179/prduct_details.aspx?id=2957	
	Category 6A jacks, Blue	Uniprise	UNJ10G-BL	76010011	http://www.commscope.com/catalog/enterprise/2147486179/prduct_details.aspx?id=32946	
	HDMI, Black with RedMere Technology, 15 Ft., Ultra-Slim Series	Monoprice	9891		http://www.monoprice.com/Product?c_id=102&cp_id=10255&cs_id=1025503&p_id=9891&seq=1&format=2	Provide Halar Mesh cable Socket (see below) to cover all HDMI Cables in Plenum Ceiling Areas.
	HDMI, Black with RedMere Technology, 30 Ft., Slim Series	Monoprice	9170		http://www.monoprice.com/Product?c_id=102&cp_id=10255&cs_id=1025507&p_id=9170&seq=1&format=2	Provide Halar Mesh cable Socket (see below) to cover all HDMI Cables in Plenum Ceiling Areas.
	HDMI, Black with RedMere Technology, 40 Ft., Slim Series	Monoprice	9171		http://www.monoprice.com/Product?c_id=102&cp_id=10255&cs_id=1025507&p_id=9171&seq=1&format=2	Provide Halar Mesh cable Socket (see below) to cover all HDMI Cables in Plenum Ceiling Areas.
	Halar Mesh Plenum Cable Socket (for HDMI Cables)	Halar	HTNO.75		http://www.techflex.com/catalogpages/halar.pdf	Provide as end-to-end cover for all HDMI cables installed in Plenum Ceilings.
	Classroom Drop Patch Cord - Cat 6 - Non Plenum, Blue, RJ45 to UNJ600GY (Teachers Desk)	Uniprise	UNC6-S-L-RJ45-UNJ600(GY)-BL-FTxx	UC1B682-1C	http://www.commscope.com/catalog/enterprise/2147486112/prduct_details.aspx?id=23292	
	Classroom Drop Patch Cord - Cat 6 - Plenum, Blue, RJ45 to UNJ600GY (Teachers Desk)	Uniprise	UNC6-P-RJ45-UNJ600(GY)-BL-FTxx	UC1B682-1C	http://www.commscope.com/catalog/enterprise/2147486112/prduct_details.aspx?id=23292	Provide 10, 15, 25, 35 and special lengths as needed.
	Classroom Drop Patch Cord - Cat 6 - Plenum, Blue, RJ45 to RJ45 (Projector)	Uniprise	UNC6-P-BL-FTxx	UC1BB2-0Z	http://www.commscope.com/catalog/enterprise/2147486155/prduct_details.aspx?id=44912	Provide 10, 15, 25, 35 and special lengths as needed.
	Classroom Drop Patch Cord - Cat 6 - Non-Plenum, Blue, RJ45 to RJ45 (Projector)	Uniprise	UNC6-BL-FTxx	UC1BB2-0Z	http://www.commscope.com/catalog/enterprise/2147486155/prduct_details.aspx?id=44903	Provide 10, 15, 25, 35 and special lengths as needed.
	Classroom WAP Patch Cord - Cat 6A - Non Plenum, Blue, RJ45 to RJ45	Uniprise	UNC10G-BL-FTxx	UC1AAA2-0Z	http://www.commscope.com/catalog/enterprise/2147486155/prduct.aspx?id=82&searchCopperCords=true	Provide 10, 15, 25, 35 and special lengths as needed.
	Classroom WAP Patch Cord - Cat 6A - Plenum, Blue, RJ45 to RJ45	Uniprise	UNC10G-P-BL-FTxx	UC1AAA2-0Z	http://www.commscope.com/catalog/enterprise/2147486155/prduct_details.aspx?id=44878	Provide 10, 15, 25, 35 and special lengths as needed.
	AV Gear Box - 2' x 2' x 6.5" Deep, flush ventilated door, recessed grid, plenum rated, white finish, lockable door.	Premier Mounts	GB-AVSTOR3		http://www.mounts.com/GB-AVSTOR3	With Cable Suspension accessories and configured as indicated on the detail drawings
	WAP Enclosure - Non-metallic, lockable white finish.	Oberon	1015-00		http://www.oberonwireless.com/WebDocs/Model1015-00_Spec_Sheet.pdf	
	Coaxial Cable RG 6 - Quad Shield - Plenum	Uniprise	2227V BKRL RG6 QD	4100104/10	http://www.commscope.com/catalog/enterprise/2147486141/prduct_details.aspx?id=25197	Beldon, Mohawk.
	Coaxial Cable RG 6 - Quad Shield Riser	CCT	5214		http://cctcable.com/product-catalog.php?type=25&cat=32&subcat=62&product=64	www.cctcable.com
	Coaxial Cable RG 6 - Quad Shield Plenum	CCT	P5218		http://cctcable.com/product-catalog.php?type=25&cat=32&subcat=33&product=57	www.cctcable.com
	Coaxial Cable RG6 - Riser	Uniprise	5781 BRKL RG6 QD	4220004/10	http://www.commscope.com/catalog/enterprise/2147486140/prduct_details.aspx?id=34370	Beldon, Mohawk.
	Coaxial Cable RG6 Riser	CCT	5203		http://cctcable.com/product-catalog.php?type=25&cat=32&subcat=62&product=59	www.cctcable.com
	Coaxial Cable RG6 Plenum	CCT	P5203		http://cctcable.com/product-catalog.php?type=25&cat=32&subcat=33&product=56	www.cctcable.com

Pre-Approved Primary Components List - Package E

Lincoln Public Schools - Security Technology Ready Classroom Facilities Projects

Schools: _____

Submittal Date: _____

Last Updated: 8/6/2014

General Contractor:

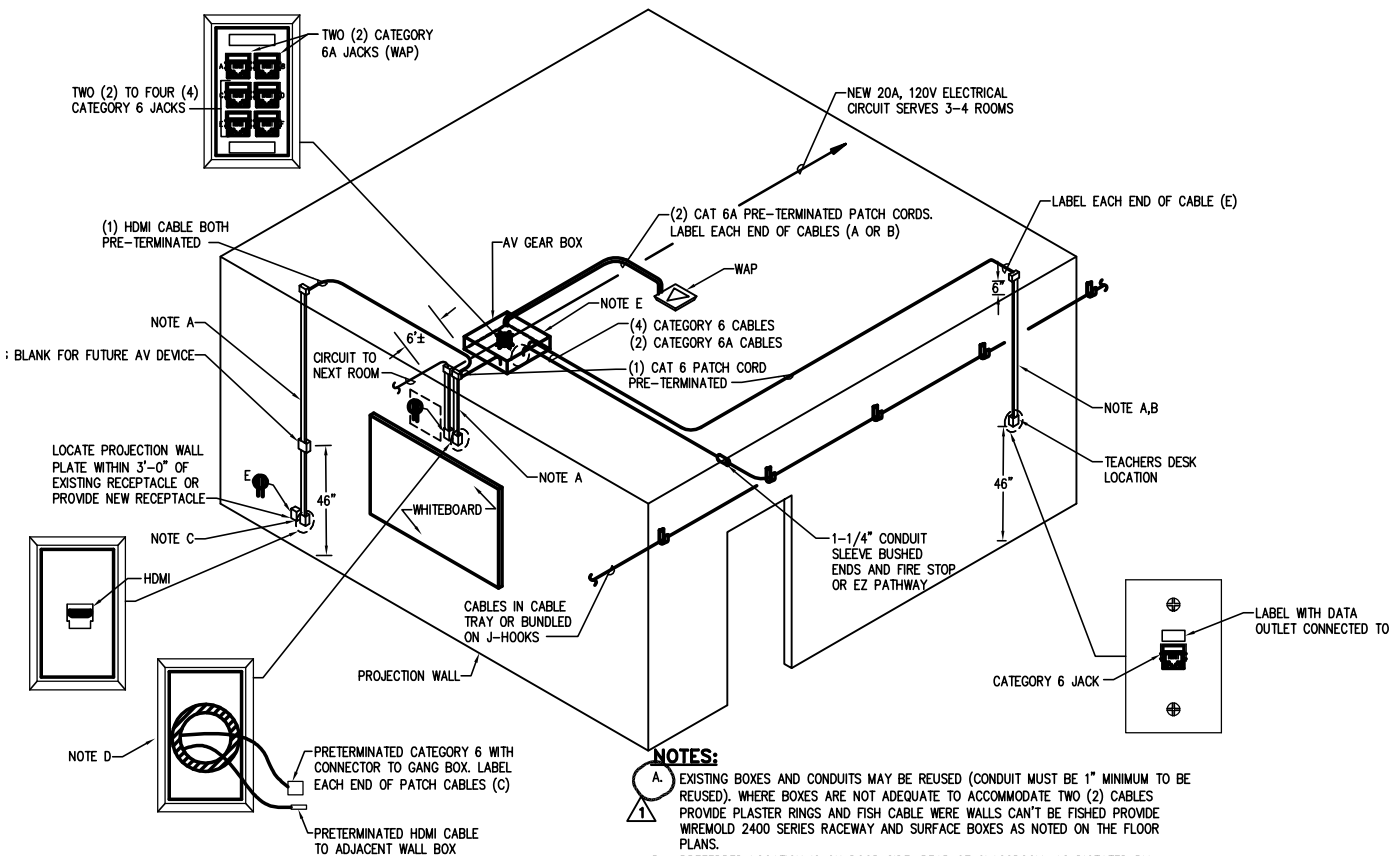
Communications Sub-Contractor:

Bid Package No.:

Submittal No.:

									https://www.anixter.com/content/anixter/north-america/us/en/product-detail.5916-BKRL-RG11-60-1000-COMMSCOPE-UNIPRISE-SOLUTIONS.PG-Coaxial%2BCabling%2BInfrastructure.C55916.html	Beldon, Mohawk.
	Coaxial Cable RG11 - Riser	Uniprise	5916			8203603/10			http://cctcable.com/product-catalog.php?type=25&cat=63&subcat=65&product=73	www.cctcable.com
	Coaxial Cable RG11 Riser	CCT	5400						https://www.anixter.com/north-america/us/en/product-detail.2287V-WTRL-RG11-QD-1000-COMMSCOPE-UNIPRISE-SOLUTIONS.PG-Coaxial%2BCabling%2BInfrastructure.C52287V.html	Beldon, Mohawk.
	Coaxial Cable RG11 - Plenum	Uniprise	2287V WTRL RG11 QD			4101204			http://cctcable.com/product-catalog.php?type=25&cat=63&subcat=64&product=71	www.cctcable.com
	Coaxial Cable RG11 Plenum	CCT	P5405						https://www.anixter.com/content/anixter/asia-pacific/asp/en/product-detail.SNS1P6QS-BELDEN.PG-Coaxial%2BCabling%2BInfrastructure.340511.html	Uniprise, Mohawk
	Coaxial Cable RG6 - F Connector	Belden	SNS1 P6QS			340511			https://www.anixter.com/asia-pacific/asp/en/product-detail.SNS1IAS-BELDEN.PG-Coaxial%2BCabling%2BInfrastructure.523856.html	Uniprise, Mohawk
	Coaxial Cable RG11 - F Connector	Belden	SNS1IAS			523856			http://www.commscope.com/catalog/enterprise/21474862.10/pr	
	F Connector / Coupler	Uniprise	M81C			108009432			http://www.commscope.com/catalog/enterprise/21474862.10/pr	
	FACEPLATES AND CONNECTORS									
27 15 43										
	Wall phone plates, stainless steel, 3.25" Mounting Stud Spacing	Uniprise	M10LWSP			760117572			http://www.commscope.com/catalog/enterprise/21474862.06/pr	
	1 port stainless steel faceplates	Uniprise	M11SP			760100867			http://www.commscope.com/catalog/enterprise/21474862.06/pr	
	2 port stainless steel faceplates	Uniprise	M12SP			108615188			http://www.commscope.com/catalog/enterprise/21474862.06/pr	
	4 port stainless steel faceplates	Uniprise	M14SP			108615204			http://www.commscope.com/catalog/enterprise/21474862.06/pr	Systemax, Panduit, Hubbell

DWG: F:\Projects\014-1187\ELEC\LPS Project E\Constructs\General\000.C36.dwg
 DATE: Aug 15, 2014 9:23am
 USER: eklein
 XREFS: xref - title



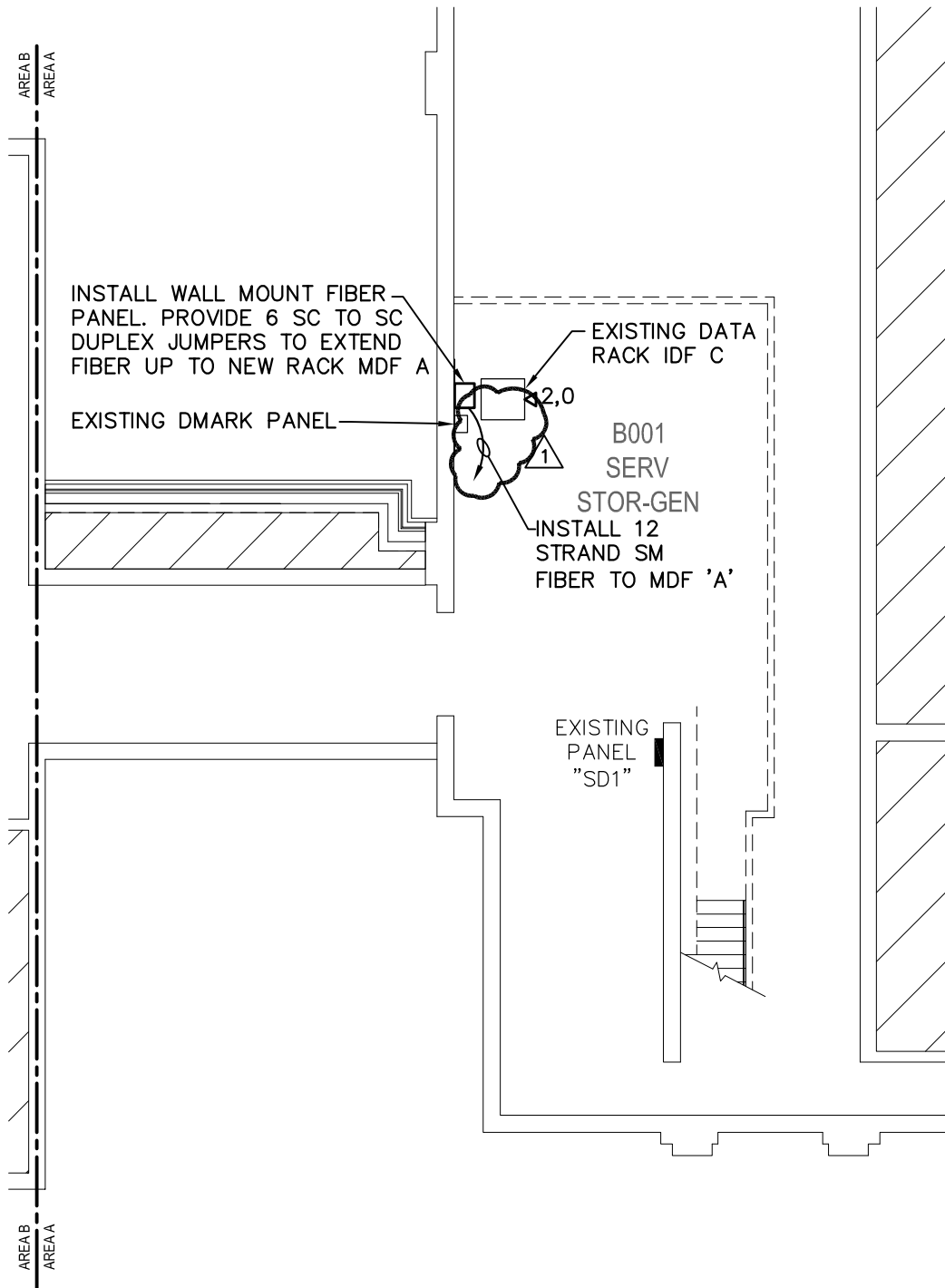
- NOTES:**
- A. EXISTING BOXES AND CONDUITS MAY BE REUSED (CONDUIT MUST BE 1" MINIMUM TO BE REUSED). WHERE BOXES ARE NOT ADEQUATE TO ACCOMMODATE TWO (2) CABLES PROVIDE PLASTER RINGS AND FISH CABLE WHERE WALLS CAN'T BE FISHED PROVIDE WIREMOLD 2400 SERIES RACEWAY AND SURFACE BOXES AS NOTED ON THE FLOOR PLANS.
 - B. PREFERRED LOCATION IS ON DOOR SIDE, REAR OF CLASSROOM. AS DICTATED BY EXISTING CONDITIONS
 - C. LOCATE ON EITHER SIDE OF PROJECTION SURFACE AS DICTATED BY EXISTING CONDITIONS.
 - D. PREFERRED LOCATION IS DIRECTLY ABOVE PROJECTOR. WHERE HEADROOM IS NOT AVAILABLE LOCATE TO SIDE OF PROJECTOR. SEE DETAIL 9/000.C103
 - E. LOCATE GEAR BOX 2' PR MORE OFF CENTER LINE OF THE ROOM AS NECESSARY TO ACCOMMODATE RELOCATE OF EXISTING CAT 6 CABLES
 - F. INSTALL GRAY BLANK INSERTS IN ALL UNUSED FACEPLATES.
 - G. ALL PATCH CABLES NEED TO BE LABELED ON EACH END.
 - H. DATA JACKS FOR CEILING MOUNT PROJECTORS NEEDS TO BE INSTALL IN SURFACE BOX.

TECHNOLOGY READY CLASSROOM CABLING

NO SCALE

12
000.C36

DWG: F:\Projects\014-1187_ELEC\LPS Project E\Constructs\Electrical\Calvert\EPNBA.dwg
 DATE: Aug 15, 2014 9:25am
 XREFS: 130 Xref FP-0 xref - title
 USER: eklein



AREA A - BASEMENT FLOOR PLAN TELECOMMUNICATIONS



1
130.T00.A

SCALE: 3/32" = 1'-0"

OLSSON
ASSOCIATES

1111 Lincoln Mall, Suite 111
P.O. Box 84608
Lincoln, NE 68501-4608

TEL 402.474.6311
FAX 402.474.5160
www.olssonassociates.com

(Sheet Number)
130.T00.A

(Project Number)
014-1187
(Drawing Number)

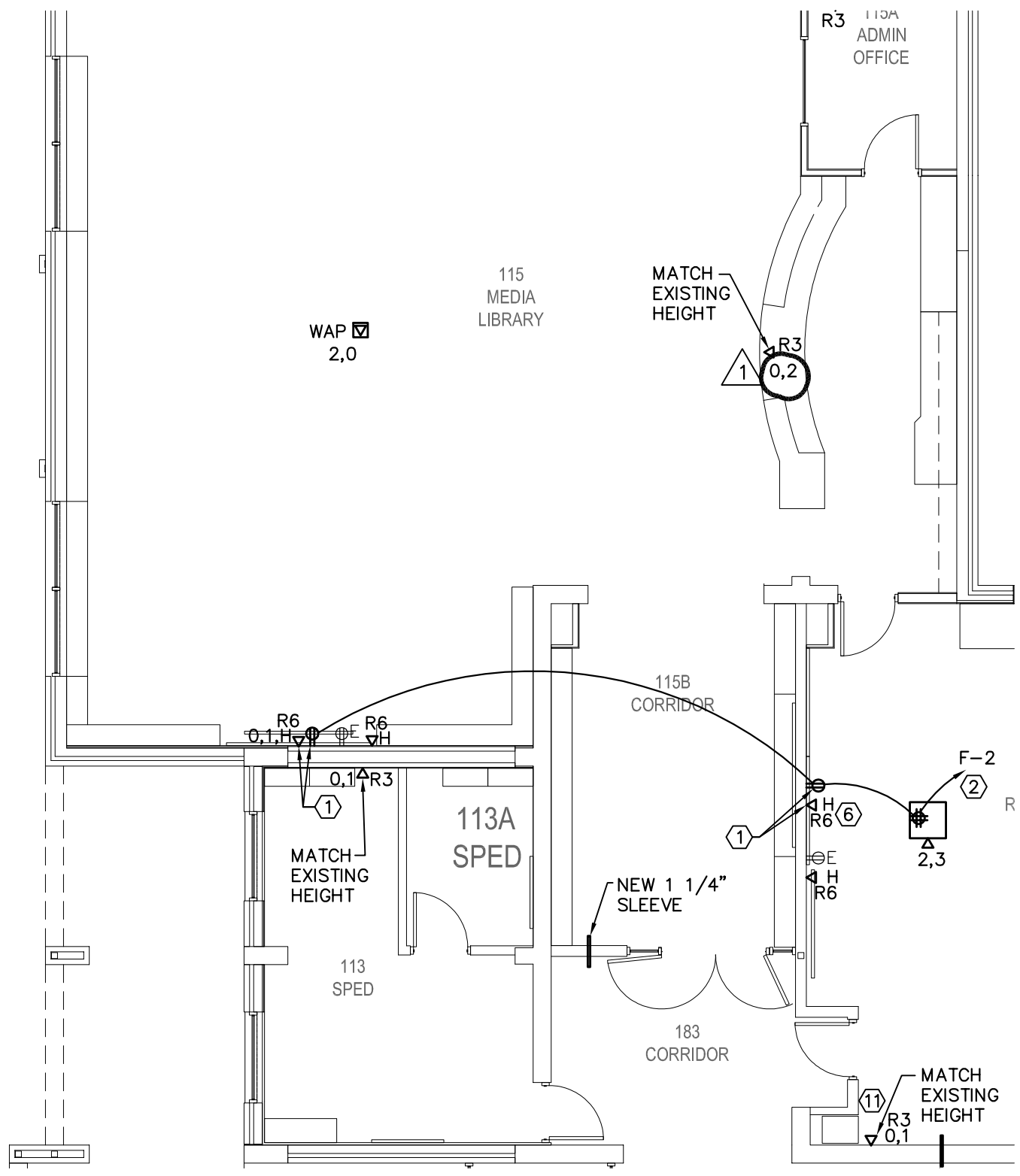
(Date)
07.17.2014

AREA A - BASEMENT FLOOR PLAN TELECOMMUNICATIONS
LINCOLN PUBLIC SCHOOLS
CALVERT ELEMENTARY SCHOOL



Attachment No. 130.T00.A-1
to Addendum No. 1
Dated: August 15, 2014

DWG: F:\Projects\014-1187_ELEC\LPS Project E\Constructs\Electrical\Eastridge\EPN1A.dwg
 DATE: Aug 15, 2014 9:27am
 XREFS: 135 Xref FP-1
 USER: eklein
 135RU_FP01
 135E_FP01
 135 Xref RCP-1



AREA A - FIRST FLOOR PLAN TELECOMMUNICATIONS



1
 135.T01.A

SCALE: 1/8" = 1'-0"

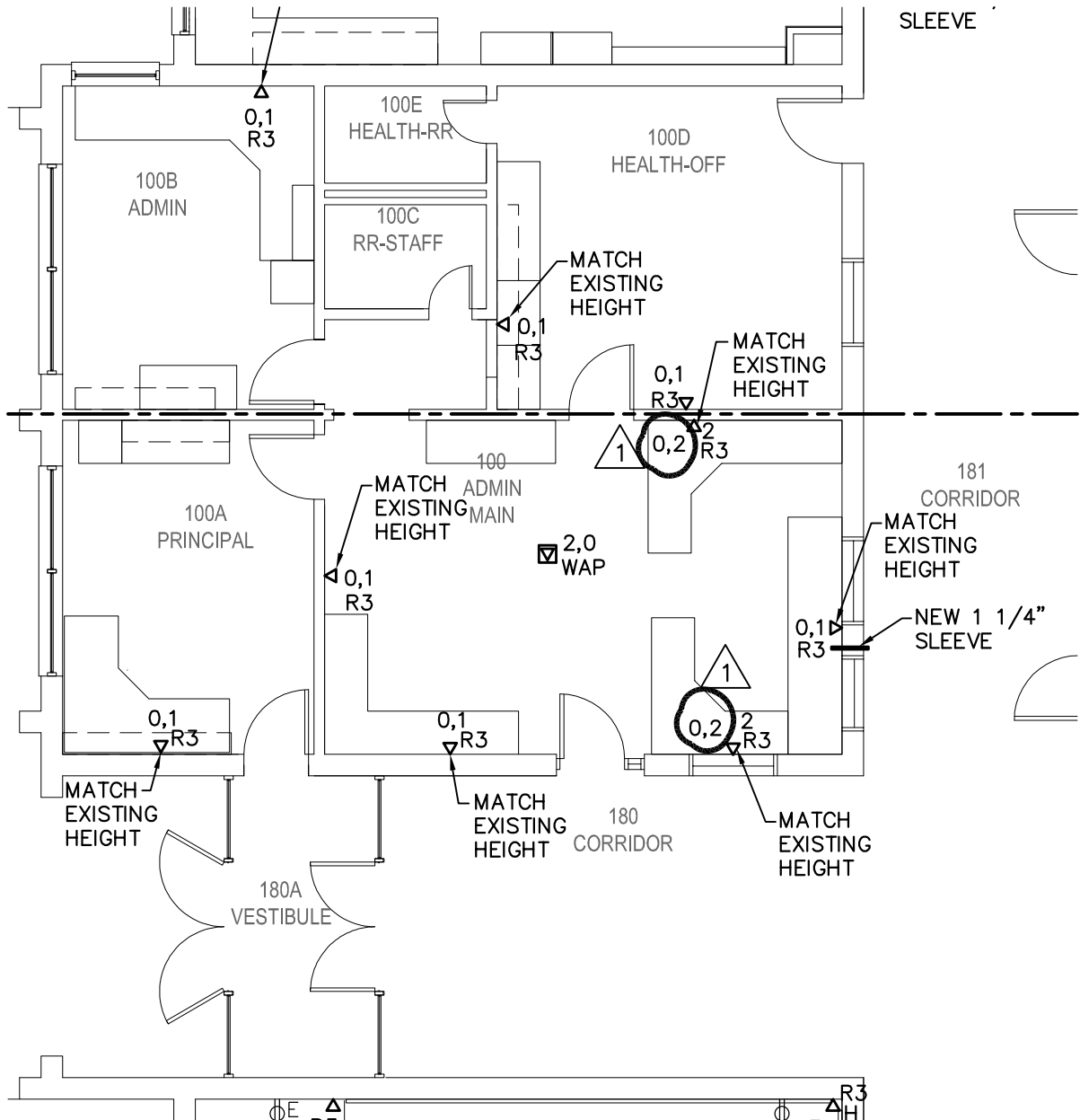
MOLSSON ASSOCIATES
 1111 Lincoln Mall, Suite 111
 P.O. Box 84608
 Lincoln, NE 68501-4608
 TEL. 402.474.6311
 FAX 402.474.5160
 www.dlssonassociates.com

(Sheet Number)
135.T01.A
 (Project Number)
 014-1187
 (Drawing Number)
 (Date)
 07.17.2014

AREA A - FIRST FLOOR PLAN TELECOMMUNICATIONS
 LINCOLN PUBLIC SCHOOLS
 EASTRIDGE ELEMENTARY SCHOOL

Attachment No. 135.T01.A-1
 to Addendum No. 1
 Dated: August 15, 2014

DWG: F:\Projects\014-1187\ELEC\LPS Project E\Constructs\Electrical\Eastridge\EPN1A.dwg
 DATE: Aug 15, 2014 9:28am
 XREFS: 135 Xref FP-1
 USER: eklein
 135RU_FP01
 135E_FP01
 xref - title
 135 Xref RCP-1



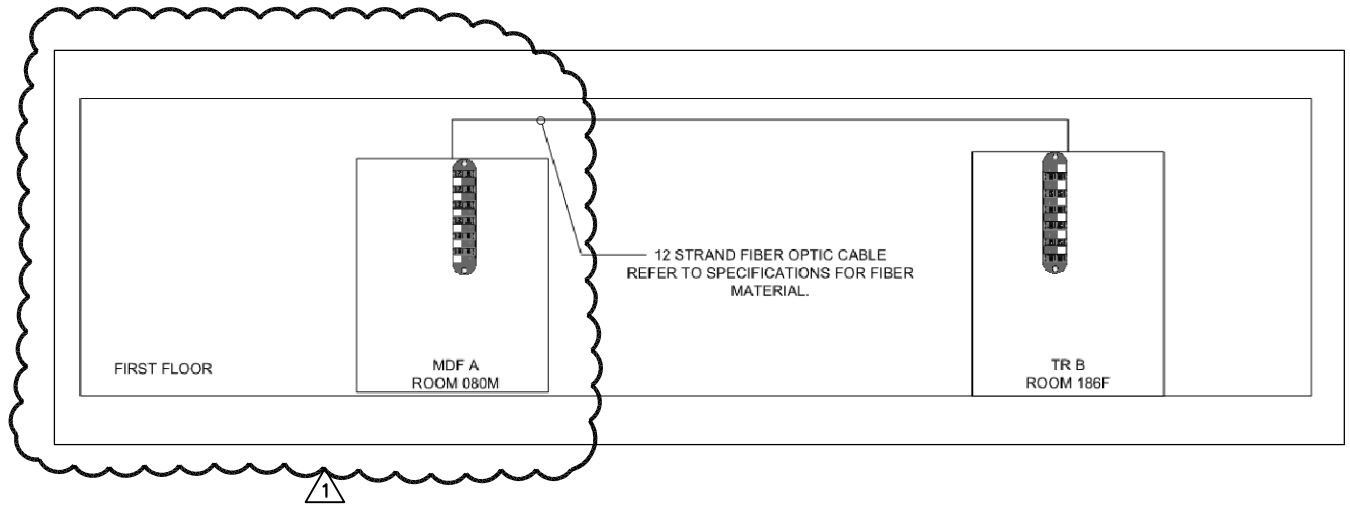
AREA B - FIRST FLOOR PLAN TELECOMMUNICATIONS



1
135.T01.B

SCALE: 1/8" = 1'-0"

DWG: F:\Projects\014-1187\ELEC\LPS Project E\Constructs\Electrical\Hill\EDN1A.dwg USER: eklein
DATE: Aug 15, 2014 9:21am XREFS: xref - title



FIBER RISER

NO SCALE

3
142.T31



1111 Lincoln Mall, Suite 111
P.O. Box 84608
Lincoln, NE 68501-4608

TEL 402.474.6311
FAX 402.474.5160
www.olssonassociates.com

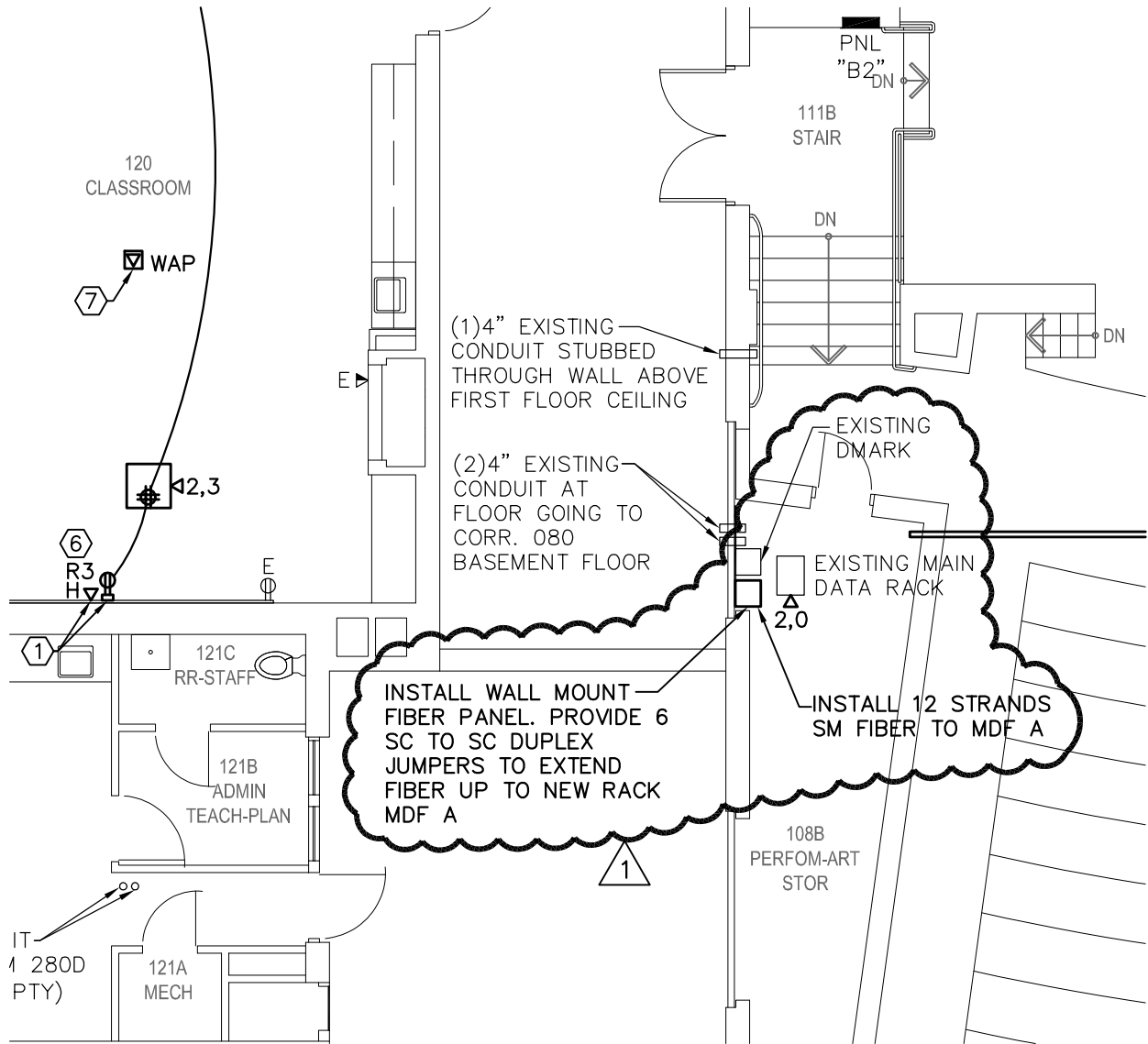
(Sheet Number)
142.T31
(Project Number)
014-1187
(Drawing Number)
(Date)
07.17.2014

TELECOMMUNICATIONS RACK DETAILS
LINCOLN PUBLIC SCHOOLS
HILL ELEMENTARY SCHOOL



Attachment No. 142.T31-1
to Addendum No. 1
Dated: August 15, 2014

DWG: F:\Projects\014-1187\ELEC\LPS Project E\Constructs\Electrical\Prescott\EPN1A.dwg
 DATE: Aug 15, 2014 9:31am
 USER: eklein
 XREFS: xref - title 161 Xref FP-1 161 Xref RCP-01 161E_FP01 161RU_FP01 1610_FP01



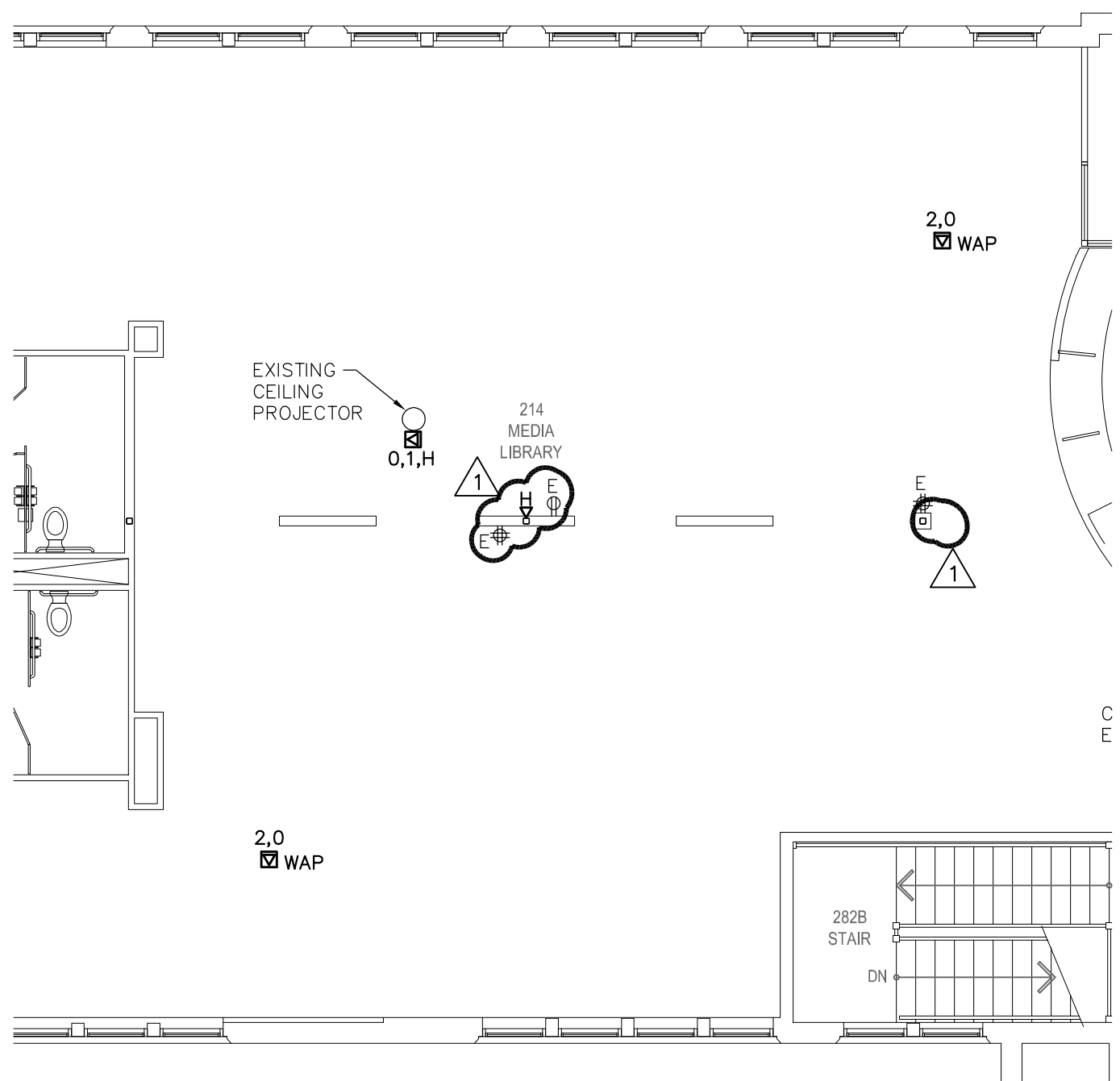
AREA A - FIRST FLOOR PLAN TELECOMMUNICATIONS



1
161.T01.A

SCALE: 1/8" = 1'-0"

DWG: F:\Projects\014-1187\ELEC\LPS Project E\Constructs\Electrical\Prescott\EPN2A.dwg USER: eklein
 DATE: Aug 15, 2014 10:26am XREFS: xref - title 161 Xref FP-2 161 Xref RCP-02 161E_FP02 161RU_FP02 161O_FP02



AREA A - SECOND FLOOR PLAN TELECOMMUNICATIONS



1
161.T02.A

SCALE: 1/8" = 1'-0"

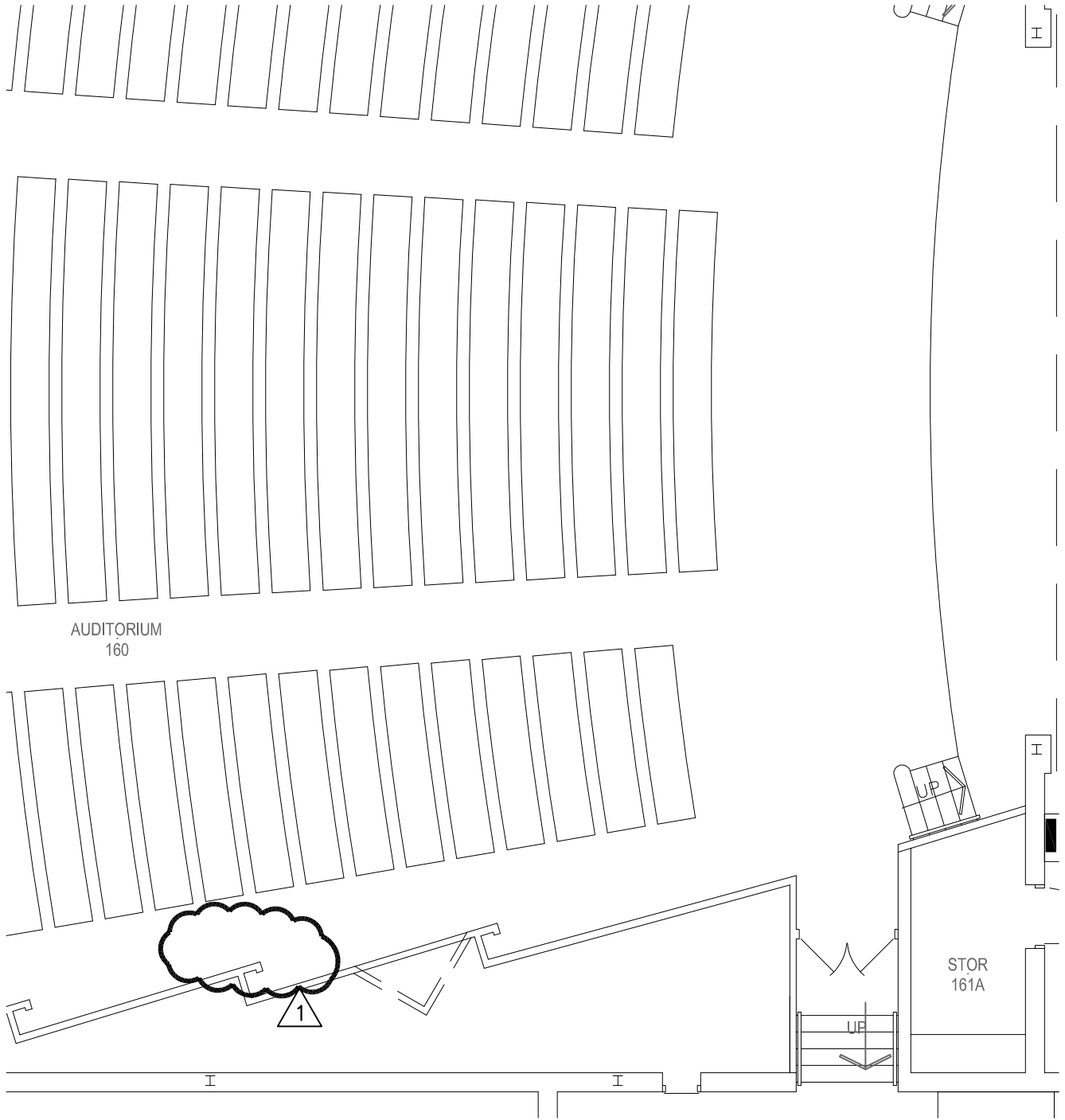
OLSSON
ASSOCIATES
1111 Lincoln Mall, Suite 111
P.O. Box 84608
Lincoln, NE 68501-4608
TEL 402.474.6311
FAX 402.474.5160
www.olssonassociates.com

(Sheet Number)
161.T02.A
(Project Number)
014-1187
(Drawing Number)
(Date)
07.17.2014

AREA A - SECOND FLOOR PLAN TELECOMMUNICATIONS
LINCOLN PUBLIC SCHOOLS
PRESCOTT ELEMENTARY SCHOOL

Attachment No. 161.T02.A-1
to Addendum No. 1
Dated: August 15, 2014

DWG: F:\Projects\014-1187\ELEC\LPS Project E\Constructs\Electrical\Round\EPN1A.dwg USER: eklein
DATE: Aug 15, 2014 9:29am XREFS: 217 Xref FP-1 xref - title 217 Xref RCP-01



AREA B - FIRST FLOOR PLAN

TELECOMMUNICATIONS



1
217.T01.B

SCALE: 1/8" = 1'-0"

OLSSON
ASSOCIATES

1111 Lincoln Mall, Suite 111
P.O. Box 84608
Lincoln, NE 68501-4608

TEL 402.474.6311
FAX 402.474.5160
www.olssonassociates.com

(Sheet Number)

217.T01.B

(Project Number)
014-1187
(Drawing Number)

(Date)
07.17.2014

AREA B - FIRST FLOOR PLAN TELECOMMUNICATIONS
LINCOLN PUBLIC SCHOOLS
POUND MIDDLE SCHOOL



Attachment No. 217.T01.B-1
to Addendum No. 1
Dated: August 15, 2014