



08 August 2014

MILITARY DEPARTMENT  
STATE of NEBRASKA  
LINCOLN, NEBRASKA

## NEBRASKA ARMY NATIONAL GUARD CATS ELECTRICAL SERVICE UPGRADE PROJECT

at

Camp Ashland Training Site  
220 County Road A  
Ashland, NE 68003

PROJECT NO. 31090366

### A D D E N D U M   N O .   1

The original specifications and drawings on the STATE OF NEBRASKA REQUEST for PROPOSAL FORM for the project noted above are amended as noted in this Addendum No. 1.

Receipt of this Addendum shall be acknowledged by inserting its number and date in the space provided on the Bid Form.

#### ADDENDUM NO. 1

NOTE TO ALL PLANHOLDERS: Please insert this Addendum into your copy of the Contract Documents for the above named project.

The following changes to the Contract Documents are issued by the CFMO-CMB and shall have the same force and affect as though a part of the original issue.

**THE RECEIPT DATE, TIME and LOCATION of the BID PROPOSAL submission HAVE NOT CHANGED.**

#### ITEM NO.

ADD 1-1     Pre-Bid Meeting Sign-In Sheet.

Refer to the sign-in sheet, attached at the end of this addendum.

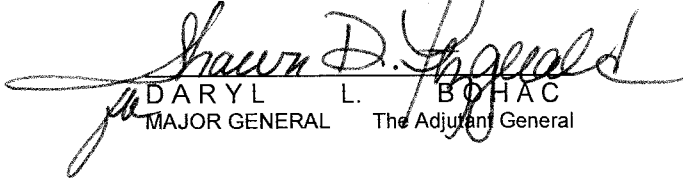
ADD 1-2     Pre-Bid Meeting Owner Comments

- A. Contractors must be on site to receive their own deliveries. The owner will not accept deliveries on behalf of the contractor.
- B. Space will be provided on site for staging of materials and contractor parking.

## DRAWINGS

- ADD 1-3      Sheet ED1.3 – Electrical Demolition Site Plan Area “B” – ABI No. 1 & 3  
Replace sheet with attached drawing ED1.3R. Revisions are noted on this drawing.
- ADD 1-4      Sheet E1.1 – Electrical Site Plan Area “A” – Base Bid  
Replace sheet with attached drawing E1.1R. Revisions are noted on this drawing.
- ADD 1-5      Sheet E1.2 – Electrical Site Plan Area “A” – Base Bid  
Replace sheet with attached drawing E1.2R. Revisions are noted on this drawing.
- ADD 1-6      Sheet E1.3 – Electrical Site Plan Area “A” – Base Bid  
Replace sheet with attached drawing E1.3R. Revisions are noted on this drawing.
- ADD 1-7      Sheet E1.4 – Electrical Site Plan Area “A” – Base Bid  
Replace sheet with attached drawing E1.4R. Revisions are noted on this drawing.
- ADD 1-8      Sheet E1.5 – Electrical Site Plan Area “A” – Base Bid  
Replace sheet with attached drawing E1.5R. Revisions are noted on this drawing.
- ADD 1-9      Sheet E3.1 – Electrical Riser Diagrams  
Replace sheet with attached drawing E3.1R. Revisions are noted on this drawing.
- ADD 1-10     Sheet E4.1 – Electrical Site Plan Area “A” – Base Bid  
Replace sheet with attached drawing E4.1R. Revisions are noted on this drawing.

THIS ADDENDUM SHALL BE ATTACHED TO AND MADE A PART OF THE DRAWINGS AND SPECIFICATIONS AND SHALL BE ACKNOWLEDGED WITH THE BIDDER'S PROPOSAL.

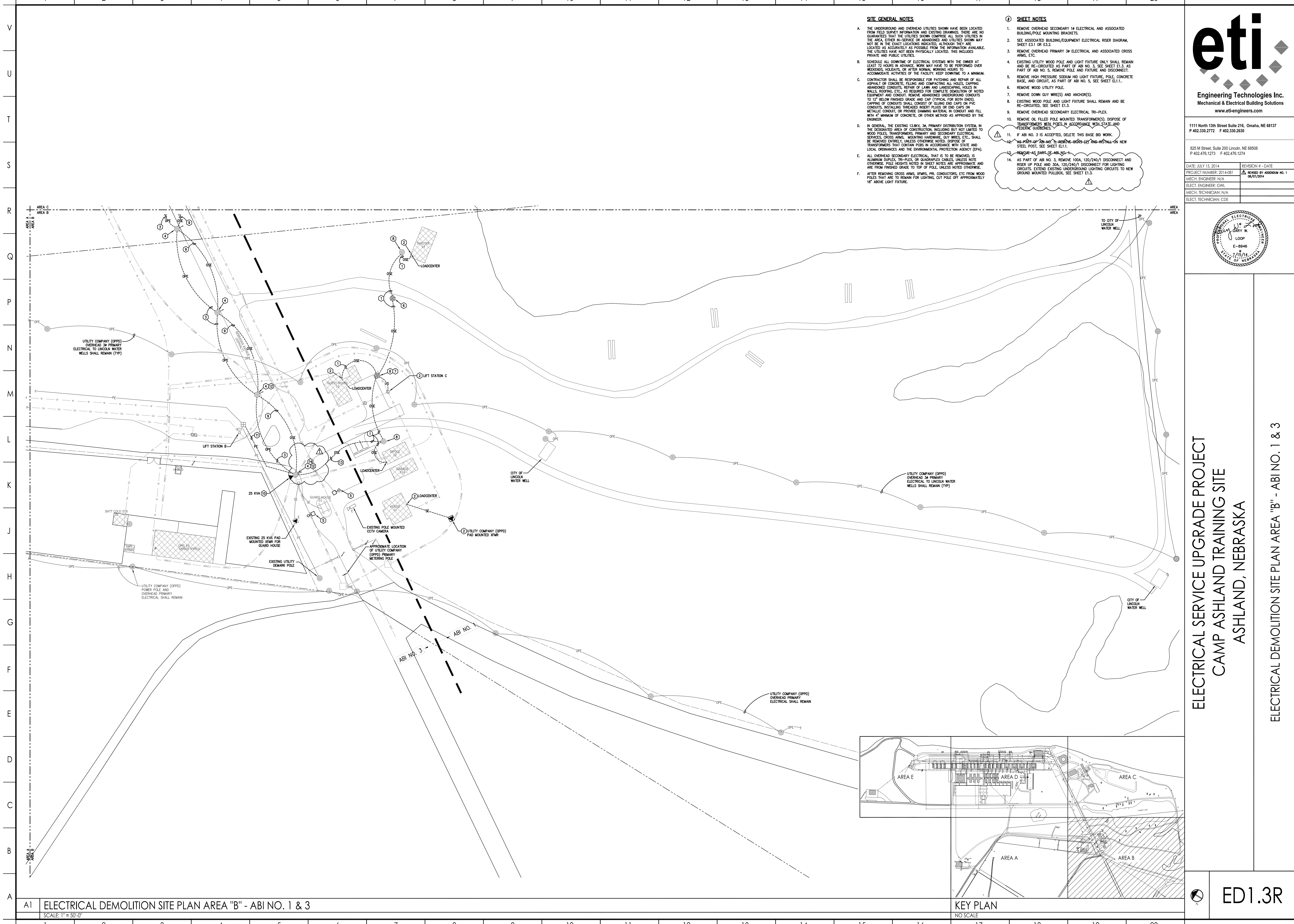
  
DARYL L. BOHAC  
MAJOR GENERAL      The Adjutant General

End of Addendum No. 1



Attachments: Pre-Bid Sign-In Sheet, Electrical Sheets ED1.3R, E1.1R, E1.2R, E1.3R, E1.4R, E1.5R, E3.1R, E4.1R.



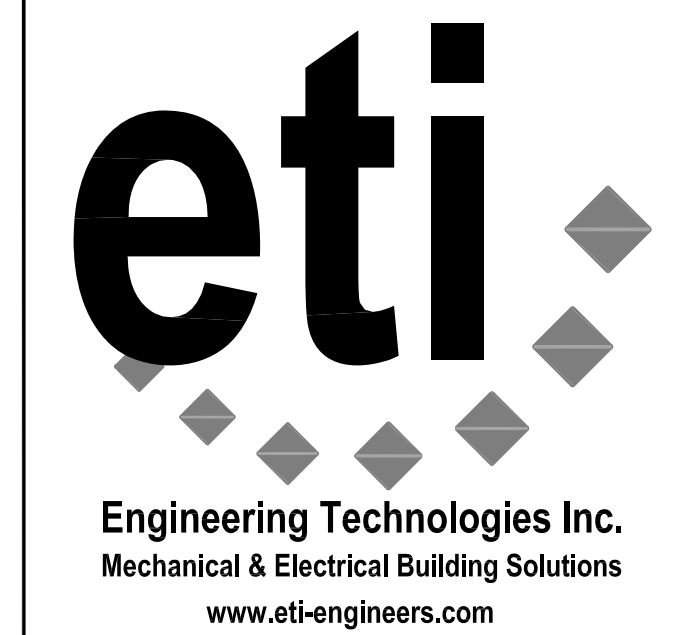


**SITE GENERAL NOTES**

- A. THE UNDERGROUND AND OVERHEAD UTILITIES SHOWN HAVE BEEN LOCATED FROM FIELD SURVEY INFORMATION AND EXISTING DRAWINGS. THERE ARE NO GUARANTEES THAT THE UTILITIES SHOWN COMPRISE ALL SUCH UTILITIES IN THE AREA, EITHER IN-SERVICE OR ABANDONED AND UTILITIES SHOWN MAY NOT BE IN THE EXACT LOCATIONS INDICATED. ALTHOUGH THEY ARE LOCATED AS ACCURATELY AS POSSIBLE FROM THE INFORMATION AVAILABLE, THE UTILITIES HAVE NOT BEEN PHYSICALLY LOCATED. THIS INCLUDES PRIVATE AND PUBLIC UTILITIES.
- B. SCHEDULE ALL DOWNTIME OF ELECTRICAL SYSTEMS WITH THE OWNER AT LEAST 72 HOURS IN ADVANCE. WORK MAY HAVE TO BE PERFORMED OVER WEEKENDS, HOLIDAYS, OR AFTER NORMAL WORKING HOURS TO A MINIMUM ACCOMMODATE ACTIVITIES OF THE FACILITY. KEEP DOWNTIME TO A MINIMUM.
- C. CONTRACTOR SHALL BE RESPONSIBLE FOR PATCHING AND REPAIR OF ALL ASPHALT OR CONCRETE, FILLING AND COMPACTING ALL HOLES, CAPPING ABANDONED CONDUITS, REPAIR OF LAWN AND LANDSCAPING, HOLES IN WALLS, ROOFING, ETC., AS REQUIRED FOR COMPLETE DEMOLITION OF NOTED EQUIPMENT AND CONDUIT. REMOVE ABANDONED UNDERGROUND CONDUITS TO 12" BELOW FINISHED GRADE AND CAP (TYPICAL FOR BOTH ENDS). CAPPING OF CONDUITS SHALL CONSIST OF GLUING END CAPS ON PVC CONDUITS, INSTALLING TIE-BACK INSERT PLUGS OR END CAPS ON METALLIC CONDUIT, OR PROVIDE DAMMING MATERIAL IN CONDUIT AND FILL WITH 4" MINIMUM OF CONCRETE, OR OTHER METHOD AS APPROVED BY THE ENGINEER.
- D. IN GENERAL, THE EXISTING 13.8KV, 36" PRIMARY DISTRIBUTION SYSTEM, IN THE DISULCATED AREA OF CONSTRUCTION INCLUDING BUT NOT LIMITED TO WOOD POLES, TRANSFORMERS, PRIMARY AND SECONDARY ELECTRICAL SERVICES, CROSS ARMS, MOUNTING HARDWARE, GUY WIRES, ETC., SHALL BE REMOVED ENTIRELY, UNLESS OTHERWISE NOTED. DISPOSE OF TRANSFORMERS THAT CONTAIN OILS IN ACCORDANCE WITH STATE AND LOCAL ORDINANCES AND THE ENVIRONMENTAL PROTECTION AGENCY (EPA).
- E. ALL OVERHEAD SECONDARY ELECTRICAL THAT IS TO BE REMOVED, IS ALUMINUM DUPLEX, TRI-PLEX OR QUADRI-PLEX CABLES, UNLESS NOTE OTHERWISE. POLE HEIGHTS NOTED IN SHEET NOTES ARE APPROXIMATE AND ARE FROM FINISHED GRADE TO TOP OF POLE, UNLESS NOTED OTHERWISE.
- F. AFTER REMOVING CROSS ARMS, WIRING, PIVOT CONDUCTORS, ETC FROM WOOD POLES THAT ARE TO REMAIN FOR LIGHTING, CUT POLE OFF APPROXIMATELY 18" ABOVE LIGHT FIXTURE.

**SHEET NOTES**

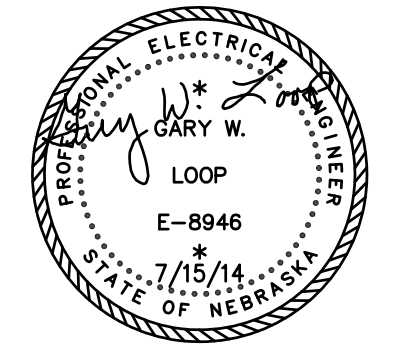
- 1. REMOVE OVERHEAD SECONDARY 1# ELECTRICAL AND ASSOCIATED BUILDING/POLE MOUNTING BRACKETS.
- 2. SEE ASSOCIATED BUILDING/EQUIPMENT ELECTRICAL RISER DIAGRAM, SHEET E.1.1 OR E.3.2.
- 3. REMOVE OVERHEAD PRIMARY 3# ELECTRICAL AND ASSOCIATED CROSS ARMS, ETC.
- 4. EXISTING UTILITY WOOD POLE AND LIGHT FIXTURE ONLY SHALL REMAIN AND BE RE-CIRCUITED AS PART OF ABI NO. 3. SEE SHEET E1.3. AS PART OF ABI NO. 5, REMOVE POLE AND FIXTURE AND DISCONNECT.
- 5. REMOVE HIGH PRESSURE SODIUM HID LIGHT FIXTURE, POLE, CONCRETE BASE, AND CIRCUIT, AS PART OF ABI NO. 5, SEE SHEET E1.1..
- 6. REMOVE WOOD UTILITY POLE
- 7. REMOVE DOWN GUY WIRE(S) AND ANCHOR(S).
- 8. EXISTING WOOD POLE AND LIGHT FIXTURE SHALL REMAIN AND BE RE-CIRCUITED, SEE SHEET E1.3.
- 9. REMOVE OVERHEAD SECONDARY ELECTRICAL TRI-PLEX.
- 10. REMOVE OIL FILLED POLE MOUNTED TRANSFORMER(S). DISPOSE OF TRANSFORMERS WITH POLES IN ACCORDANCE WITH STATE AND FEDERAL ORDINANCES.
- 11. IF ABI NO. 3 IS ACCEPTED, DELETE THIS BASE BID WORK.
- 12. AS PART OF ABI NO. 3, REMOVE CROSS ARMS AND INSTALL ON NEW STEEL POST, SEE SHEET E1.1.
- 13. REMOVE AS PART OF ABI NO. 3.
- 14. AS PART OF ABI NO. 3, REMOVE 100A, 100/240/1 DISCONNECT AND RISER UP POLE AND 30A, 120/240/1 DISCONNECT FOR LIGHTING CIRCUITS. EXTEND EXISTING UNDERGROUND LIGHTING CIRCUITS TO NEW GROUND MOUNTED PULLBOX, SEE SHEET E1.3.



1111 North 13th Street Suite 216, Omaha, NE 68137  
 P 402.330.2772 F 402.330.2630

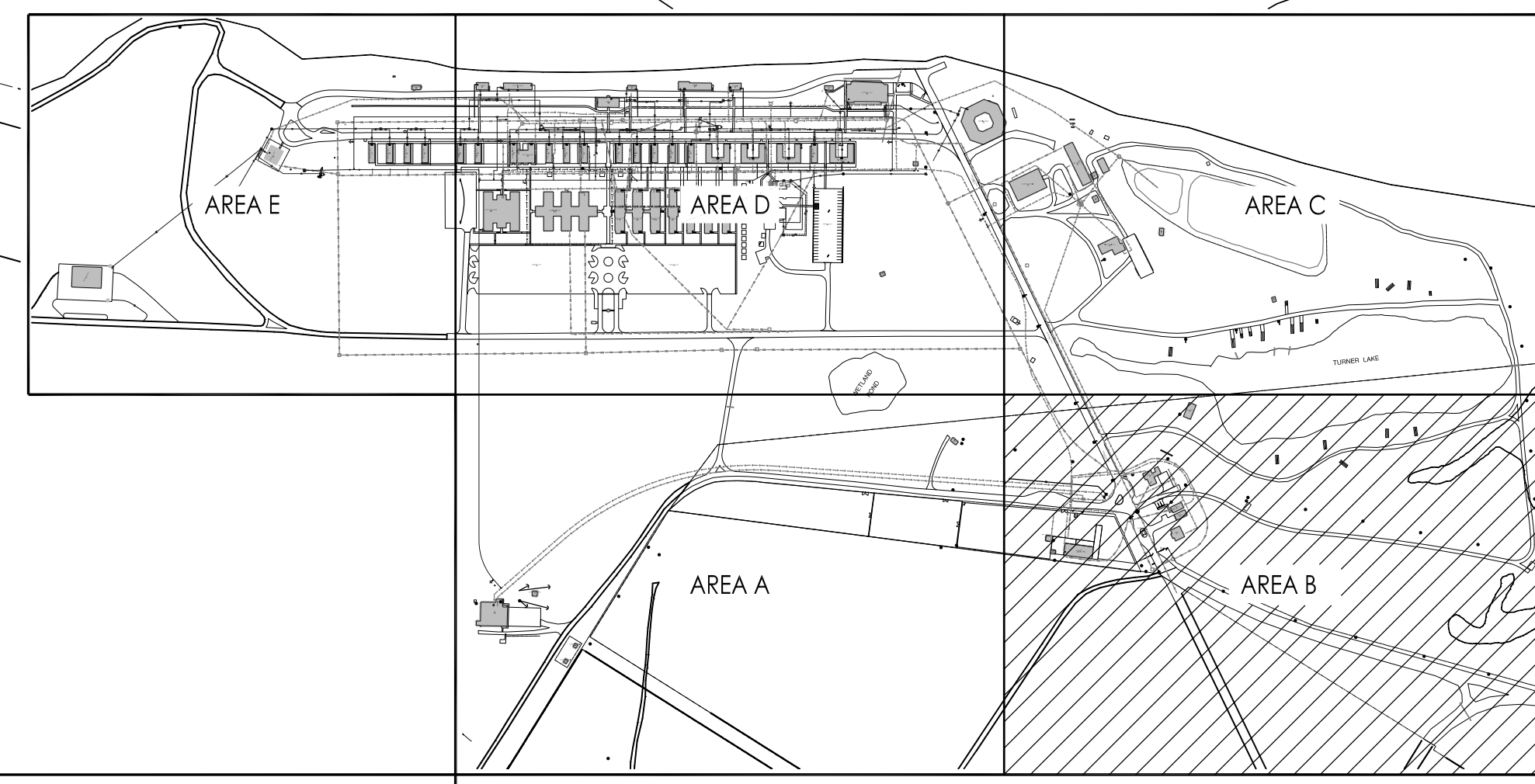
825 M Street, Suite 200 Lincoln, NE 68506  
 P 402.476.1273 F 402.476.1274

DATE: JULY 15, 2014	REVISION # - DATE
PROJECT NUMBER: 2014-081	REVISION BY: ACCORDUM NO. 1 08/07/2014
MECH. ENGINEER: N/A	
ELECT. ENGINEER: G.W.L.	
MECH. TECHNICIAN: N/A	
ELECT. TECHNICIAN: CDE	



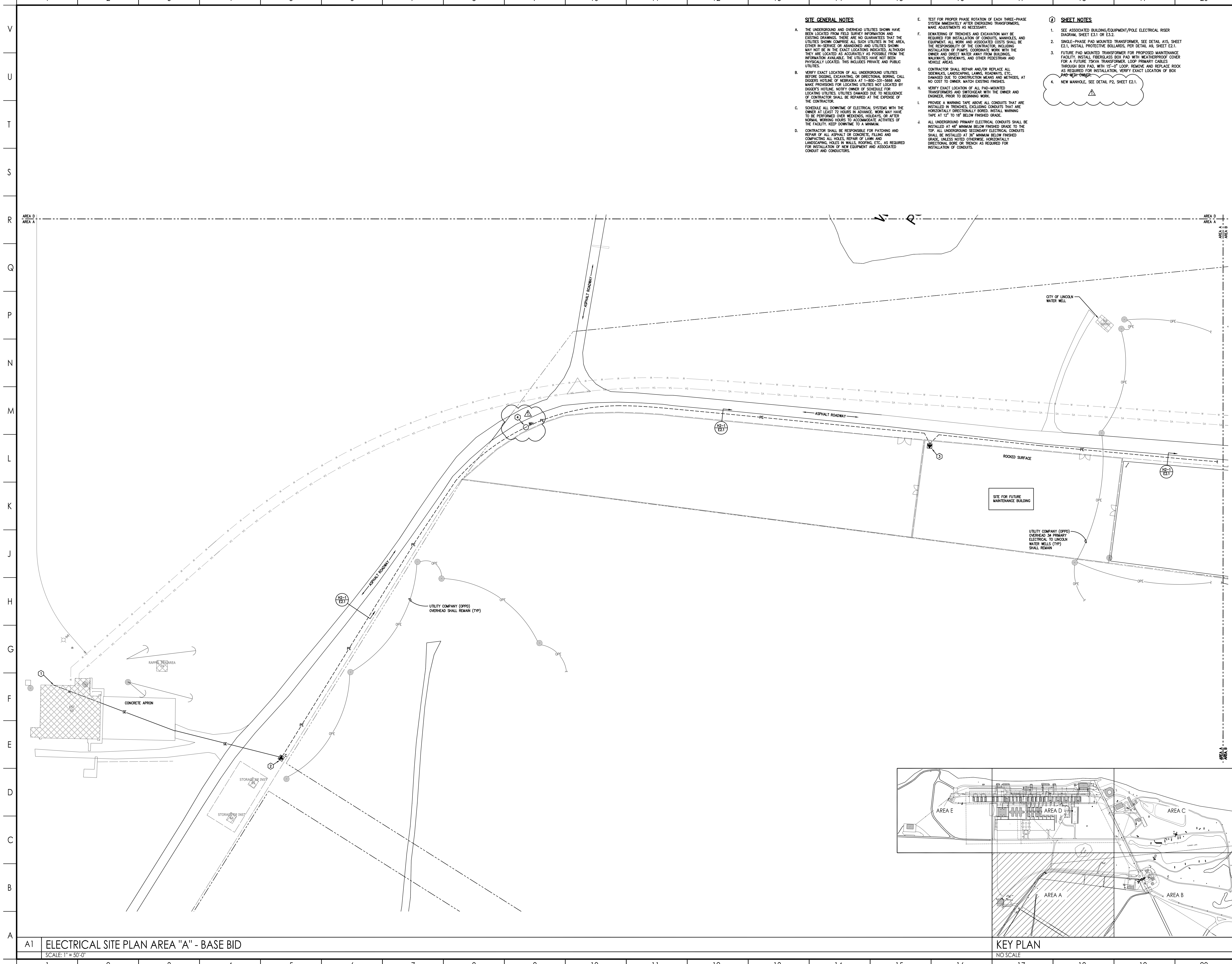
**ELECTRICAL SERVICE UPGRADE PROJECT  
 CAMP ASHLAND TRAINING SITE  
 ASHLAND, NEBRASKA**

ELECTRICAL DEMOLITION SITE PLAN AREA "B" - ABI NO. 1 & 3



A1 ELECTRICAL DEMOLITION SITE PLAN AREA "B" - ABI NO. 1 & 3  
 SCALE: 1" = 50'-0"

ED1.3R



**SITE GENERAL NOTES**

- A. THE UNDERGROUND AND OVERHEAD UTILITIES SHOWN HAVE BEEN LOCATED FROM FIELD SURVEY INFORMATION AND EXISTING DRAWINGS. THERE ARE NO GUARANTEES THAT THE UTILITIES SHOWN COMPRISE ALL SUCH UTILITIES IN THE AREA, EITHER IN-SERVICE OR ABANDONED AND UTILITIES SHOWN MAY NOT BE IN THE EXACT LOCATIONS INDICATED, ALTHOUGH THEY ARE LOCATED AS ACCURATELY AS POSSIBLE FROM THE INFORMATION AVAILABLE. THE UTILITIES HAVE NOT BEEN PHYSICALLY LOCATED. THIS INCLUDES PRIVATE AND PUBLIC UTILITIES.
- B. VERIFY EXACT LOCATION OF ALL UNDERGROUND UTILITIES BEFORE DIGGING, EXCAVATING, OR DIRECTIONAL BORING. CALL DIGGERS HOTLINE, NEBRASKA AT 1-800-331-5669 AND MAKE PROVISIONS FOR LOCATING UTILITIES NOT LOCATED BY DIGGERS HOTLINE. NOTIFY OWNER OF SCHEDULE FOR LOCATING UTILITIES. UTILITIES DAMAGED DUE TO NEGLIGENCE OF CONTRACTOR SHALL BE REPAIRED AT THE EXPENSE OF THE CONTRACTOR.
- C. SCHEDULE ALL DOWNTIME OF ELECTRICAL SYSTEMS WITH THE OWNER AT LEAST 72 HOURS IN ADVANCE. WORK MAY HAVE TO BE PERFORMED OVER WEEKENDS, HOLIDAYS, OR AFTER NORMAL WORKING HOURS TO ACCOMMODATE ACTIVITIES OF THE FACILITY. KEEP DOWNTIME TO A MINIMUM.
- D. CONTRACTOR SHALL BE RESPONSIBLE FOR PATCHING AND REPAIR OF ALL ASPHALT OR CONCRETE, FILLING AND COMPACTING ALL HOLES, REPAIR OF LAWN AND LANDSCAPING HOLES IN WALLS, ROOFING, ETC., AS REQUIRED FOR INSTALLATION OF NEW EQUIPMENT AND ASSOCIATED CONDUIT AND CONDUCTORS.

**SHEET NOTES**

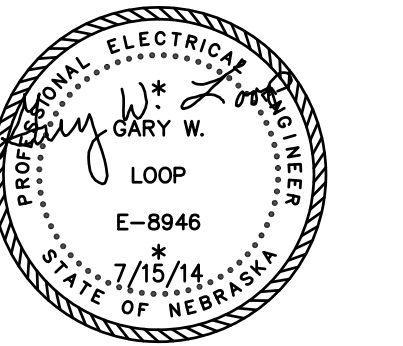
- 1. SEE ASSOCIATED BUILDING/EQUIPMENT/POLE ELECTRICAL RISER DIAGRAM, SHEET E3.1 OR E3.2.
- 2. SINGLE-PHASE PAD MOUNTED TRANSFORMER. SEE DETAIL A15, SHEET E2.1. INSTALL PROTECTIVE BOLLARDS PER DETAIL A8, SHEET E2.1.
- 3. FUTURE PAD MOUNTED TRANSFORMER FOR PROPOSED MAINTENANCE FACILITY. INSTALL FIBERGLASS BOX PAD WITH WEATHERPROOF COVER FOR A FUTURE 75KVA TRANSFORMER. LOOP PRIMARY CABLES THROUGH BOX PAD WITH 15'-0" LOOP. REMOVE AND REPLACE ROCK AS REQUIRED FOR INSTALLATION. VERIFY EXACT LOCATION OF BOX PAD-MOUNTED TRANSFORMER.
- 4. NEW MANHOLE. SEE DETAIL P2, SHEET E2.1.



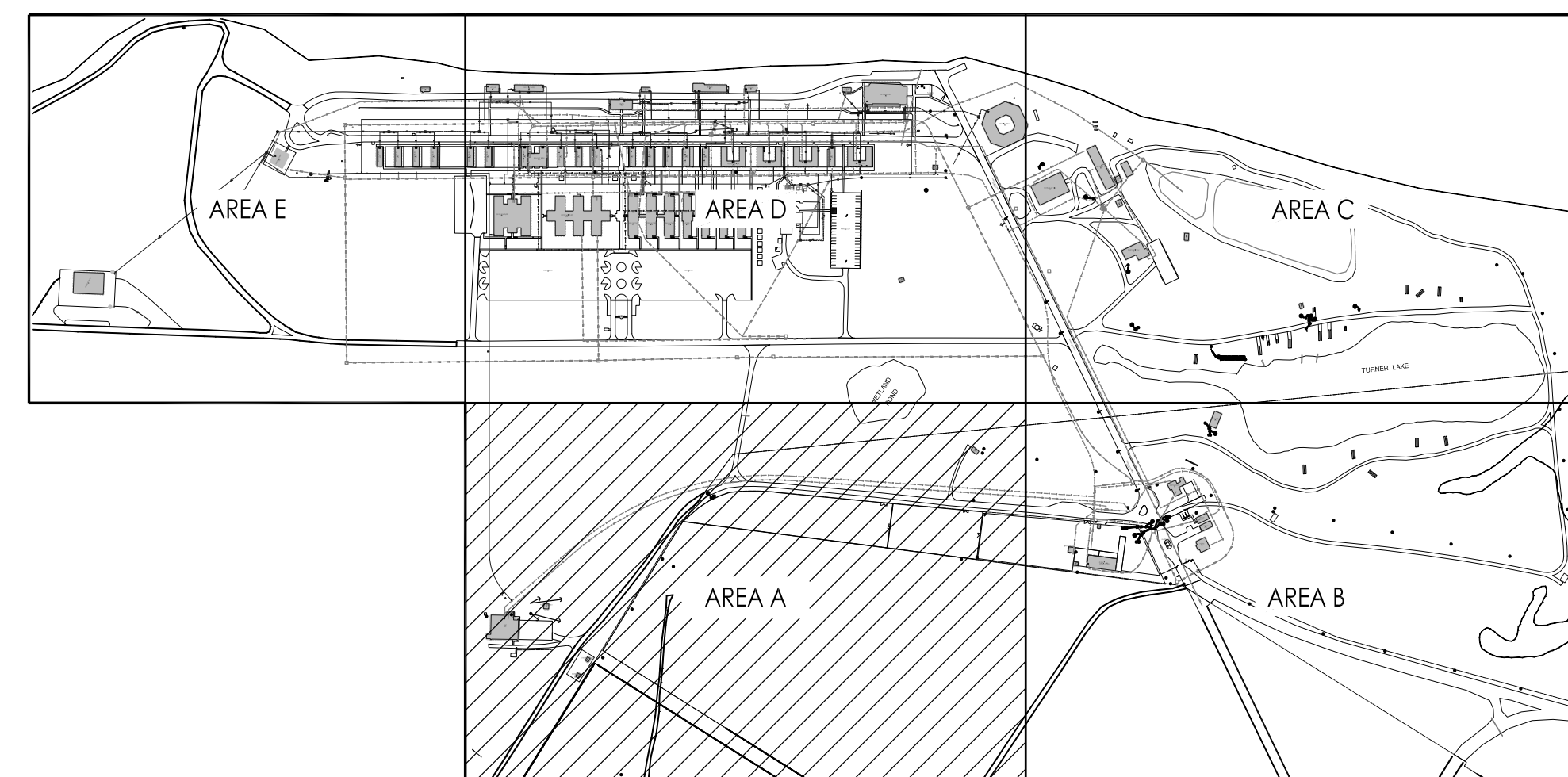
1111 North 13th Street Suite 216, Omaha, NE 68137  
P 402.330.2772 F 402.330.2630

825 M Street, Suite 200 Lincoln, NE 68506  
P 402.476.1273 F 402.476.1274

DATE: JULY 15, 2014	REVISION # - DATE
PROJECT NUMBER: 2014-081	REVISION BY: ADDENDUM NO. 1 08/07/2014
MECH. ENGINEER: N/A	
ELECT. ENGINEER: GWL	
MECH. TECHNICIAN: N/A	
ELECT. TECHNICIAN: CDE	



**ELECTRICAL SERVICE UPGRADE PROJECT**  
**CAMP ASHLAND TRAINING SITE**  
**ASHLAND, NEBRASKA**  
**ELECTRICAL SITE PLAN AREA "A" - BASE BID**



A1 ELECTRICAL SITE PLAN AREA "A" - BASE BID  
SCALE: 1" = 50'-0"

KEY PLAN  
NO SCALE

E1.1R

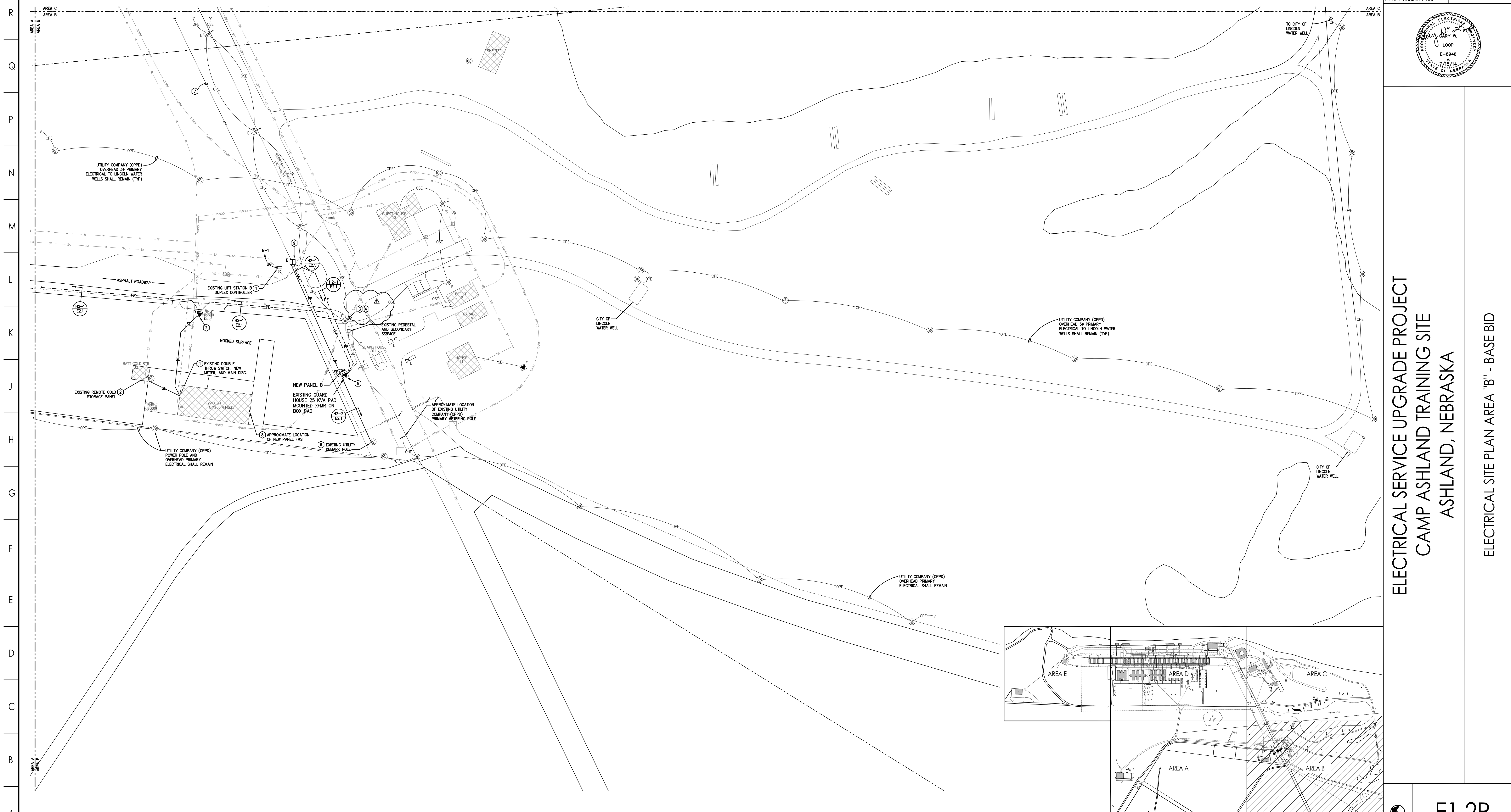
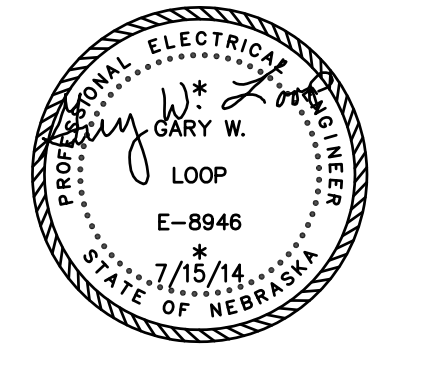
- SITE GENERAL NOTES**
- THE UNDERGROUND AND OVERHEAD UTILITIES SHOWN HAVE BEEN LOCATED FROM FIELD SURVEY INFORMATION AND EXISTING DRAWINGS. THERE ARE NO GUARANTEES THAT THE UTILITIES SHOWN COMPRISE ALL SUCH UTILITIES IN THE AREA, EITHER IN-SERVICE OR ABANDONED AND UTILITIES SHOWN MAY NOT BE IN THE EXACT LOCATIONS INDICATED, ALTHOUGH THEY ARE LOCATED AS ACCURATELY AS POSSIBLE FROM THE INFORMATION AVAILABLE. THE UTILITIES HAVE NOT BEEN PHYSICALLY LOCATED. THIS INCLUDES PRIVATE AND PUBLIC UTILITIES.
  - VERIFY EXACT LOCATION OF ALL UNDERGROUND UTILITIES BEFORE DIGGING, EXCAVATING, OR DIRECTIONAL BORING. CALL DIGGERS HOTLINE OF NEBRASKA AT 1-800-531-5666 AND MAKE PROVISIONS FOR LOCATING UTILITIES NOT LOCATED BY DIGGERS HOTLINE. NOTIFY OWNER OF SCHEDULE FOR LOCATING UTILITIES. UTILITIES DAMAGED DUE TO NEGLIGENCE OF CONTRACTOR SHALL BE REPAIRED AT THE EXPENSE OF THE CONTRACTOR.
  - SCHEDULE ALL DOWNTIME OF ELECTRICAL SYSTEMS WITH THE OWNER AT LEAST 72 HOURS IN ADVANCE. WORK MAY HAVE TO BE PERFORMED OVER WEEKENDS, HOLIDAYS, OR AFTER NORMAL WORKING HOURS TO ACCOMMODATE ACTIVITIES OF THE FACILITY. KEEP DOWNTIME TO A MINIMUM.
  - CONTRACTOR SHALL BE RESPONSIBLE FOR PATCHING AND REPAIR OF ALL ASPHALT OR CONCRETE, FILLING AND COMPACTING ALL HOLES, REPAIR OF LAWN AND LANDSCAPING HOLES IN WALLS, ROOFING, ETC., AS REQUIRED FOR INSTALLATION OF NEW EQUIPMENT AND ASSOCIATED CONDUIT AND CONDUCTORS.
- TEST FOR PROPER PHASE ROTATION OF EACH THREE-PHASE SYSTEM IMMEDIATELY AFTER ENERGIZING TRANSFORMERS. MAKE ADJUSTMENTS AS NECESSARY.
  - DEWATERING OF TRENCHES AND EXCAVATION MAY BE REQUIRED FOR INSTALLATION OF CONDUITS, MANHOLES, AND EQUIPMENT. ALL WORK AND ASSOCIATED COSTS SHALL BE THE RESPONSIBILITY OF THE CONTRACTOR, INCLUDING INSTALLATION OF PUMPS. COORDINATE WORK WITH THE OWNER AND DIRECT WATER AWAY FROM BUILDINGS, MANHOLES, DRIVEWAYS, AND OTHER PEDESTRIAN AND VEHICLE AREAS.
  - CONTRACTOR SHALL REPAIR AND/OR REPLACE ALL SIDEWALKS, LANDSCAPING, LAWNS, ROADWAYS, ETC., DAMAGED DUE TO CONSTRUCTION MEANS AND METHODS, AT NO COST TO OWNER. MATCH EXISTING FINISHES.
  - VERIFY EXACT LOCATION OF ALL PAD-MOUNTED TRANSFORMERS AND SWITCHGEAR WITH THE OWNER AND DIGGER, PRIOR TO BEGINNING WORK.
  - PROVIDE A WARNING TAPE ABOVE ALL CONDUITS THAT ARE INSTALLED IN TRENCHES, EXCLUDING CONDUITS THAT ARE HORIZONTALLY DIRECTIONALLY BORED. INSTALL WARNING TAPE AT 12" TO 18" BELOW FINISHED GRADE.
  - ALL UNDERGROUND PRIMARY ELECTRICAL CONDUITS SHALL BE INSTALLED AT 48" MINIMUM BELOW FINISHED GRADE TO THE TOP. ALL UNDERGROUND SECONDARY ELECTRICAL CONDUITS SHALL BE INSTALLED AT 36" MINIMUM BELOW FINISHED GRADE, UNLESS NOTED OTHERWISE. HORIZONTALLY DIRECTIONAL BORE OR TRENCH AS REQUIRED FOR INSTALLATION OF CONDUITS.
- SHEET NOTES**
- SEE ASSOCIATED BUILDING/EQUIPMENT/POLE ELECTRICAL RISER DIAGRAM, SHEET E3.1 OR E3.2.
  - THREE-PHASE PAD MOUNTED TRANSFORMER, SEE DETAIL A15, SHEET E2.1. INSTALL PROTECTIVE BOLLARDS PER DETAIL A8, SHEET E2.1. REMOVE AND REPLACE ROCK AS REQUIRED FOR INSTALLATION.
  - EXISTING 100A, 120/240/1 AND 30A, 120/240/1 FUSED DISCONNECTS ON POLE AND ASSOCIATED LIGHTING CIRCUITS SHALL REMAIN.
  - EXTEND NEW UNDERGROUND PRIMARY UP EXISTING UTILITY POLE. IN SCHEDULE 80 PVC CONDUIT, AND CONNECT TO EXISTING OVERHEAD CONDUCTORS, USING APPROVED METHODS. VERIFY EXACT SIZE OF SWITCHGEAR FUSES, ASSOCIATED WITH THIS CIRCUIT, WITH THE ENGINEER.
  - REMOVE EXISTING PAD MOUNTED TRANSFORMER FOR COOPER PRIMARY SYSTEM AS SHOWN. TERMINATE ALL PRIMARY CABLES.
  - COORDINATE AND VERIFY ALL REQUIREMENTS WITH THE UTILITY COMPANY, TO OBTAIN PERMANENT PRIMARY SERVICE TO THE BASE. INCLUDE IN BASE BID ANY UTILITY COMPANY ADD-TO-CONSTRUCTION COSTS. FUSING IS EXISTING ON OPPD POLE AHEAD OF DEMARK.
  - INSTALL UNDERGROUND PRIMARY AS PART OF A8 NO. 3.
  - VERIFY EXACT LOCATION OF PANEL WITH THE OWNER.
  - SEE DETAIL H7 AND A9, SHEET E2.1. PROVIDE COMPACTED DIRT FILL OR OTHER APPROVED MEANS TO RAISE BOX PAD TOP TO 2'-0" ABOVE ROADWAY. PROVIDE GRADUAL SLOPE AWAY FROM PAD.



1111 North 13th Street Suite 216, Omaha, NE 68137  
P 402.330.2772 F 402.330.2630

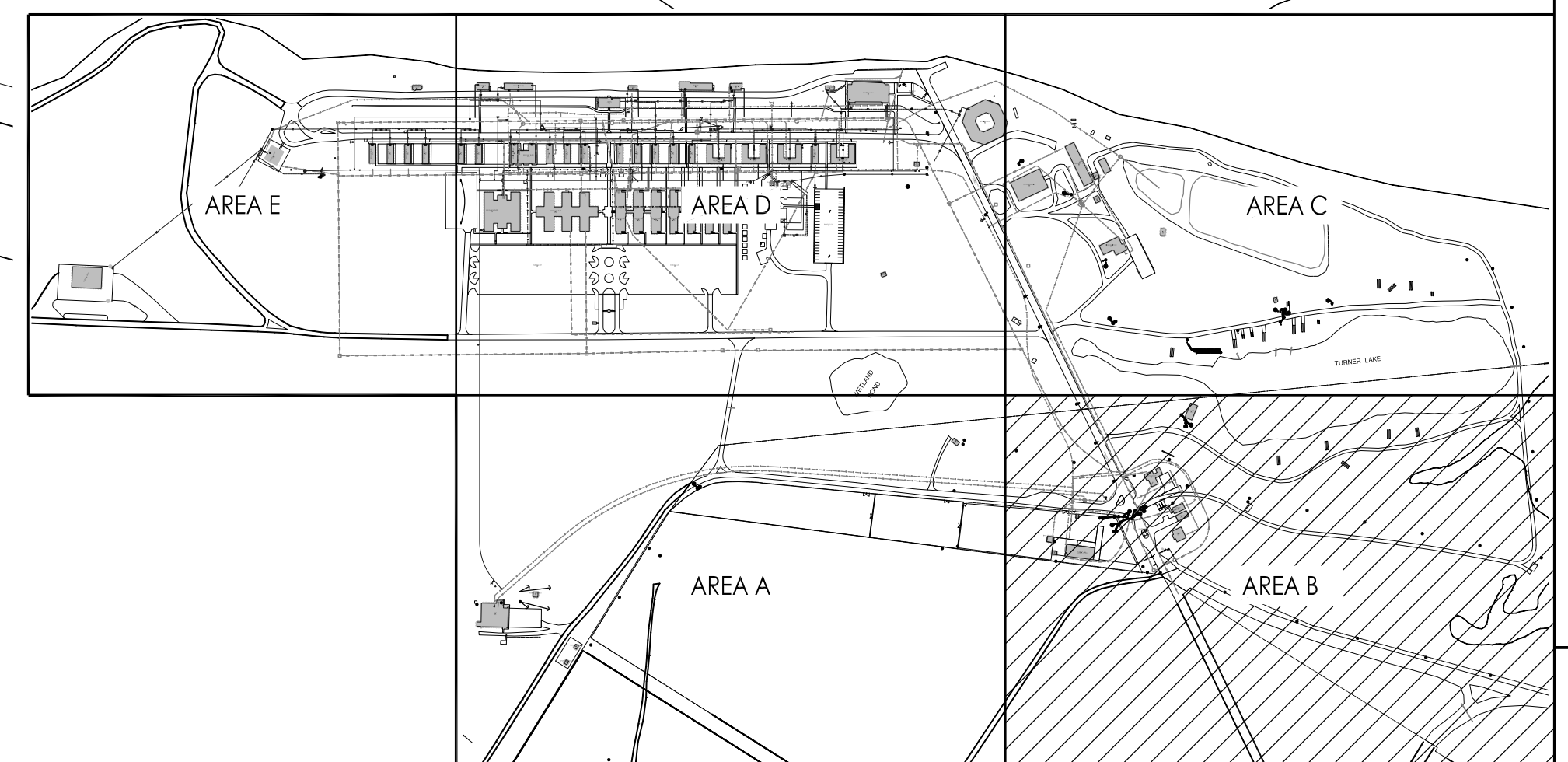
825 M Street, Suite 200 Lincoln, NE 68506  
P 402.476.1273 F 402.476.1274

DATE: JULY 15, 2014	REVISION # - DATE
PROJECT NUMBER: 2014-081	REVISION BY: ADDENDUM NO. 1 08/07/2014
MECH. ENGINEER: N/A	
ELECT. ENGINEER: GWL	
MECH. TECHNICIAN: N/A	
ELECT. TECHNICIAN: CDE	



**ELECTRICAL SERVICE UPGRADE PROJECT**  
**CAMP ASHLAND TRAINING SITE**  
**ASHLAND, NEBRASKA**

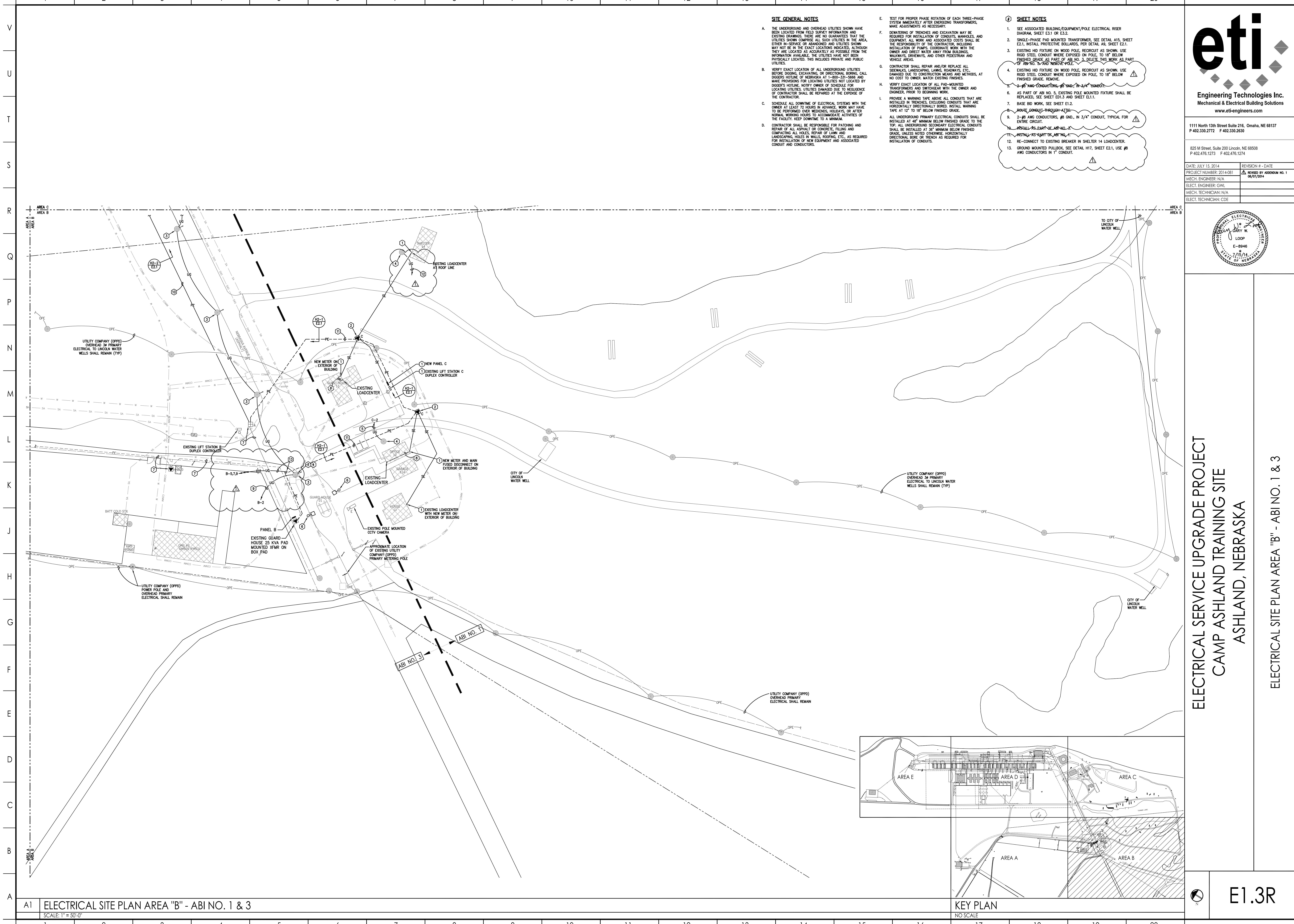
ELECTRICAL SITE PLAN AREA "B" - BASE BID



A1 ELECTRICAL SITE PLAN AREA "B" - BASE BID  
SCALE: 1" = 50'-0"

KEY PLAN  
NO SCALE

E1.2R



**SITE GENERAL NOTES**

- A. THE UNDERGROUND AND OVERHEAD UTILITIES SHOWN HAVE BEEN LOCATED FROM FIELD SURVEY INFORMATION AND EXISTING DRAWINGS. THERE ARE NO GUARANTEES THAT THE UTILITIES SHOWN COMPRISE ALL SUCH UTILITIES IN THE AREA, EITHER IN-SERVICE OR ABANDONED AND UTILITIES SHOWN MAY NOT BE IN THE EXACT LOCATIONS INDICATED. ALTHOUGH THEY ARE LOCATED AS ACCURATELY AS POSSIBLE FROM THE INFORMATION AVAILABLE, THE UTILITIES HAVE NOT BEEN PHYSICALLY LOCATED. THIS INCLUDES PRIVATE AND PUBLIC UTILITIES.
- B. VERIFY EXACT LOCATION OF ALL UNDERGROUND UTILITIES BEFORE DIGGING, EXCAVATING, OR DIRECTIONAL BORING. CALL DIGGERS HOTLINE OF NEBRASKA AT 1-800-231-5666 AND MAKE PROVISIONS FOR LOCATING UTILITIES NOT LOCATED BY DIGGERS HOTLINE. NOTIFY OWNER OF SCHEDULE FOR LOCATING UTILITIES. UTILITIES DAMAGED DUE TO NEGLIGENCE OF CONTRACTOR SHALL BE REPAIRED AT THE EXPENSE OF THE CONTRACTOR.
- C. SCHEDULE ALL DOWNTIME OF ELECTRICAL SYSTEMS WITH THE OWNER AT LEAST 72 HOURS IN ADVANCE. WORK MAY HAVE TO BE PERFORMED OVER WEEKENDS, HOLIDAYS, OR AFTER NORMAL WORKING HOURS TO ACCOMMODATE ACTIVITIES OF THE FACILITY. KEEP DOWNTIME TO A MINIMUM.
- D. CONTRACTOR SHALL BE RESPONSIBLE FOR PATCHING AND REPAIR OF ALL ASPHALT OR CONCRETE, FILLING AND COMPACTING ALL HOLES, REPAIR OF LAWN AND LANDSCAPING, HOLES IN WALLS, ROOFING, ETC., AS REQUIRED FOR INSTALLATION OF NEW EQUIPMENT AND ASSOCIATED CONDUIT AND CONDUCTORS.

**SHEET NOTES**

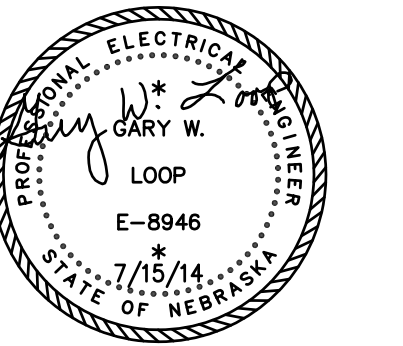
- 1. SEE ASSOCIATED BUILDING/EQUIPMENT/POLE ELECTRICAL RISER DIAGRAM, SHEET E3.1 OR E3.2.
- 2. SINGLE-PHASE PAD MOUNTED TRANSFORMER: SEE DETAIL A15, SHEET E2.1. INSTALL PROTECTIVE BOLLARDS PER DETAIL A8, SHEET E2.1.
- 3. EXISTING HD FIXTURE ON WOOD POLE, REDCUT AS SHOWN. USE RIGID STEEL CONDUIT WHERE EXPOSED ON POLE, TO 18" BELOW FINISHED GRADE AS PART OF AB NO. 3. DELETE THIS WORK AS PART OF AB NO. 3 AND REDCUT POLE.
- 4. EXISTING HD FIXTURE ON WOOD POLE, REDCUT AS SHOWN. USE RIGID STEEL CONDUIT WHERE EXPOSED ON POLE, TO 18" BELOW FINISHED GRADE. REMOVE.
- 5. ~~2-#8 AWG CONDUCTORS, #8 GND, IN 3/4" CONDUIT, TYPICAL FOR ENTIRE CIRCUIT.~~
- 6. AS PART OF AB NO. 5, EXISTING POLE MOUNTED FIXTURE SHALL BE REPLACED, SEE SHEET E21.3 AND SHEET E11.1.
- 7. BASE BID WORK, SEE SHEET E1.2.
- 8. ~~MONTE CONDUIT THROUGH AT 12"~~
- 9. 2-#8 AWG CONDUCTORS, #8 GND, IN 3/4" CONDUIT, TYPICAL FOR ENTIRE CIRCUIT.
- 10. ~~INSTALL AS PART OF AB NO. 3~~
- 11. RE-CONNECT TO EXISTING BREAKER IN SHELTER 14 LOADCENTER.
- 12. GROUND MOUNTED PULLBOX, SEE DETAIL H17, SHEET E2.1. USE #8 AWG CONDUCTORS IN 1" CONDUIT.



1111 North 13th Street Suite 216, Omaha, NE 68137  
P 402.330.2772 F 402.330.2630

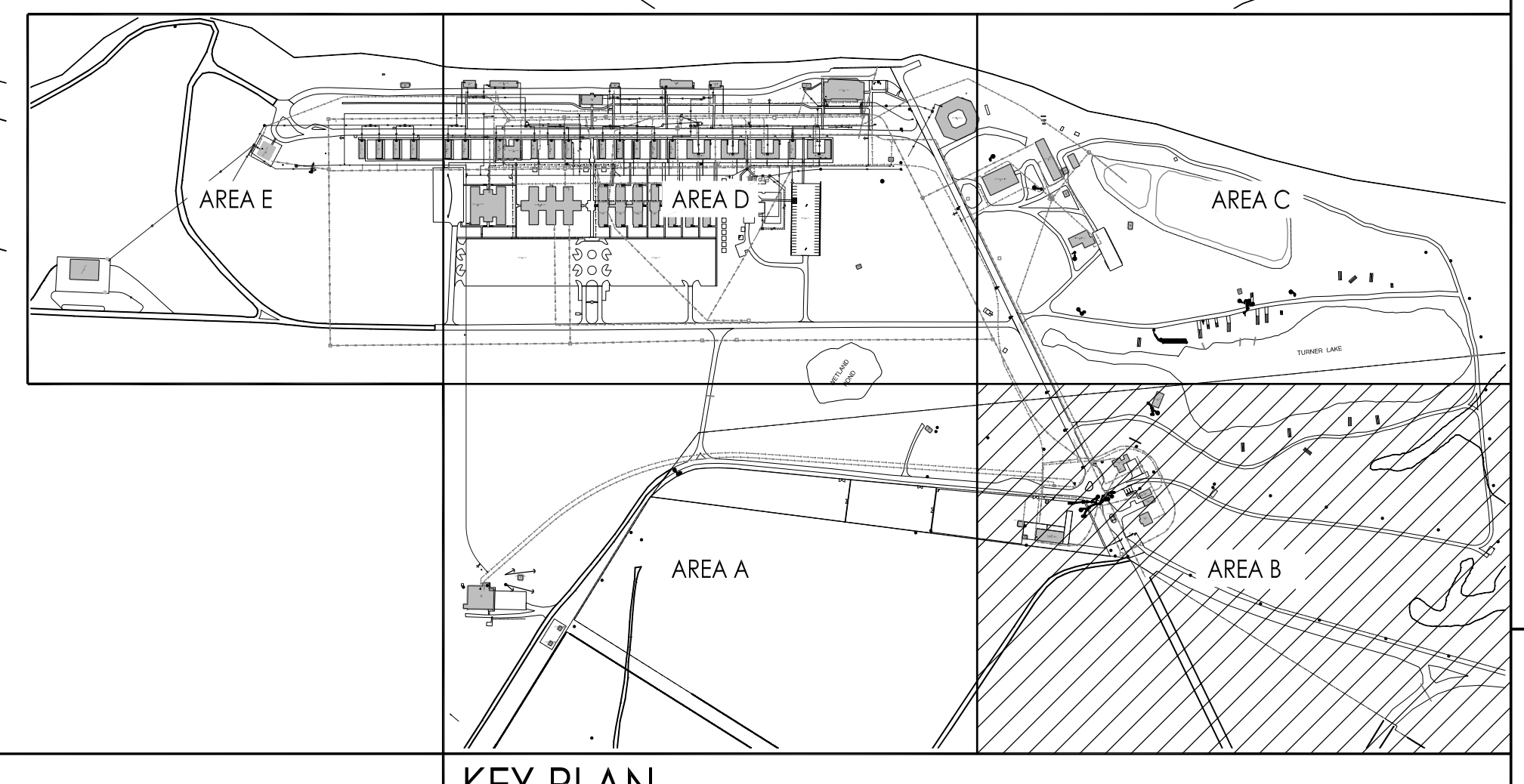
825 M Street, Suite 200 Lincoln, NE 68506  
P 402.476.1273 F 402.476.1274

DATE: JULY 15, 2014	REVISION # - DATE
PROJECT NUMBER: 2014-081	REVISION BY: ADDENDUM NO. 1 08/07/2014
MECH. ENGINEER: N/A	
ELECT. ENGINEER: G.W.L.	
MECH. TECHNICIAN: N/A	
ELECT. TECHNICIAN: CDE	



**ELECTRICAL SERVICE UPGRADE PROJECT  
CAMP ASHLAND TRAINING SITE  
ASHLAND, NEBRASKA**

ELECTRICAL SITE PLAN AREA "B" - ABI NO. 1 & 3



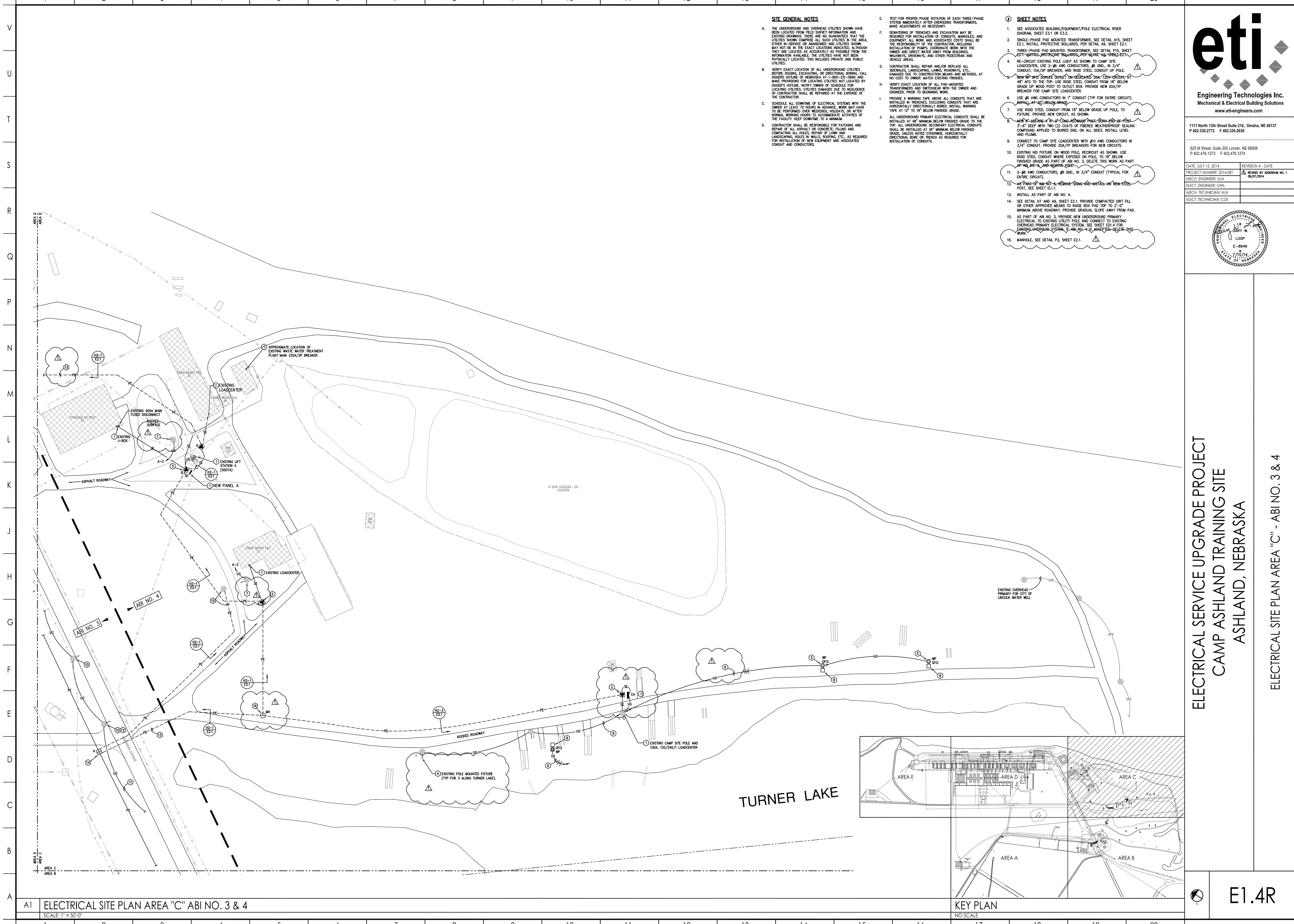
A1 ELECTRICAL SITE PLAN AREA "B" - ABI NO. 1 & 3

SCALE: 1" = 50'-0"

KEY PLAN

NO SCALE

E1.3R



**SITE GENERAL NOTES**

- A. THE UNDERGROUND AND OVERHEAD UTILITIES SHOWN HAVE BEEN LOCATED FROM FIELD SURVEY INFORMATION AND EXISTING DRAWINGS. THERE ARE NO GUARANTEES THAT THE UTILITIES SHOWN COMPRISE ALL SUCH UTILITIES IN THE AREA, EITHER IN-SERVICE OR ABANDONED AND UTILITIES SHOWN MAY NOT BE IN THE EXACT LOCATIONS INDICATED, ALTHOUGH THEY ARE LOCATED AS ACCURATELY AS POSSIBLE FROM THE INFORMATION AVAILABLE. THE UTILITIES HAVE NOT BEEN PHYSICALLY LOCATED. THIS INCLUDES PRIVATE AND PUBLIC UTILITIES.
- B. VERIFY EXACT LOCATION OF ALL UNDERGROUND UTILITIES BEFORE DIGGING, EXCAVATING, OR DIRECTIONAL BORING. CALL DIGGERS HOTLINE OF NEBRASKA AT 1-800-331-5666 AND MAKE PROVISIONS FOR LOCATING UTILITIES NOT LOCATED BY DIGGERS HOTLINE. NOTIFY OWNER OF SCHEDULE FOR LOCATING UTILITIES. UTILITIES DAMAGED DUE TO NEGLIGENCE OF CONTRACTOR SHALL BE REPAIRED AT THE EXPENSE OF THE CONTRACTOR.
- C. SCHEDULE ALL DOWNTIME OF ELECTRICAL SYSTEMS WITH THE OWNER AT LEAST 72 HOURS IN ADVANCE. WORK MAY HAVE TO BE PERFORMED OVER WEEKENDS, HOLIDAYS, OR AFTER NORMAL WORKING HOURS TO ACCOMMODATE ACTIVITIES OF THE FACILITY. KEEP DOWNTIME TO A MINIMUM.
- D. CONTRACTOR SHALL BE RESPONSIBLE FOR PATCHING AND REPAIR OF ALL ASPHALT OR CONCRETE, FILLING AND COMPACTING ALL HOLES, REPAIR OF LAWN AND LANDSCAPING HOLES IN WALLS, ROOFING, ETC. AS REQUIRED FOR INSTALLATION OF NEW EQUIPMENT AND ASSOCIATED CONDUIT AND CONDUCTORS.

**SHEET NOTES**

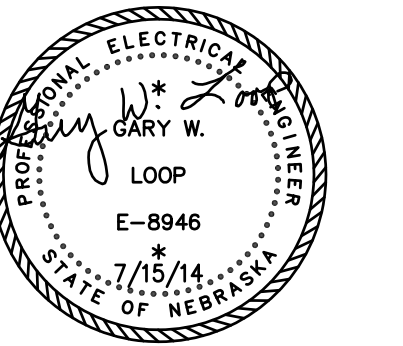
1. SEE ASSOCIATED BUILDING/EQUIPMENT/POLE ELECTRICAL RISER DIAGRAM, SHEET E3.1 OR E3.2.
2. SINGLE-PHASE PAD MOUNTED TRANSFORMER. SEE DETAIL A15, SHEET E2.1. INSTALL PROTECTIVE BOLLARDS, PER DETAIL A8, SHEET E2.1.
3. THREE-PHASE PAD MOUNTED TRANSFORMER. SEE DETAIL P15, SHEET E2.1. INSTALL PROTECTIVE BOLLARDS, PER DETAIL A8, SHEET E2.1.
4. RE-CIRCUIT EXISTING POLE LIGHT AS SHOWN TO CAMP SITE LOADCENTER. USE 2-#8 AWG CONDUCTORS, #8 GND, IN 3/4" CONDUIT, 15A/2P BREAKER, AND RIGID STEEL CONDUIT UP POLE.
5. NEW 100 AMP COMPLEX OUTLET ON DEDICATED 20A/120V CIRCUIT, AT 48" AFG TO THE TOP. USE RIGID STEEL CONDUIT FROM 18" BELOW GRADE UP WOOD POST TO OUTLET BOX. PROVIDE NEW 20A/1P BREAKER FOR CAMP SITE LOADCENTER.
6. USE #8 AWG CONDUCTORS IN 1" CONDUIT (TYP FOR ENTIRE CIRCUIT), INSTALL AT 30" BELOW GRADE.
7. USE RIGID STEEL CONDUIT FROM 18" BELOW GRADE UP POLE, TO FUTURE. PROVIDE NEW CIRCUIT, AS SHOWN.
8. NEW 8" SQUARE X 8'-0" LONG RED WOOD POST. 6" DIA. X 6" POST. 3'-0" DEEP WITH TWO (2) COATS OF FIBERED WEATHERPROOF SEALING COMPOUND APPLIED TO BURIED END, ON ALL SIDES. INSTALL LEVEL AND PLUMB.
9. CONNECT TO CAMP SITE LOADCENTER WITH #10 AWG CONDUCTORS IN 3/4" CONDUIT. PROVIDE 20A/1P BREAKERS FOR NEW CIRCUITS.
10. EXISTING HD FUTURE ON WOOD POLE. RE-CIRCUIT AS SHOWN. USE RIGID STEEL CONDUIT WHERE EXPOSED ON POLE, TO 18" BELOW FINISHED GRADE AS PART OF AB NO. 3. DELETE THIS WORK AS PART OF AB NO. 4 AND RE-INSTALL AS SHOWN.
11. 2-#8 AWG CONDUCTORS, #8 GND, IN 3/4" CONDUIT (TYPICAL FOR ENTIRE CIRCUIT).
12. AS PART OF AB NO. 4, REMOVE STONE AND INSTALL ON NEW STEEL POST. SEE SHEET E1.1.
13. INSTALL AS PART OF AB NO. 4.
14. SEE DETAIL H7 AND A9, SHEET E2.1. PROVIDE COMPACTED DIRT FILL OR OTHER APPROVED MEANS TO RAISE BOX PAD TOP TO 2'-0" MINIMUM ABOVE ROADWAY. PROVIDE GRADUAL SLOPE AWAY FROM PAD.
15. AS PART OF AB NO. 3, PROVIDE NEW UNDERGROUND PRIMARY ELECTRICAL TO EXISTING UTILITY POLE AND CONNECT TO EXISTING OVERHEAD PRIMARY ELECTRICAL SYSTEM. SEE SHEET E1.4 FOR EXISTING OVERHEAD SYSTEM. E-AB NO. 4 IS AFFECTED BY THIS WORK.
16. MANHOLE, SEE DETAIL P2, SHEET E2.1.



1111 North 13th Street Suite 216, Omaha, NE 68137  
P 402.330.2772 F 402.330.2630

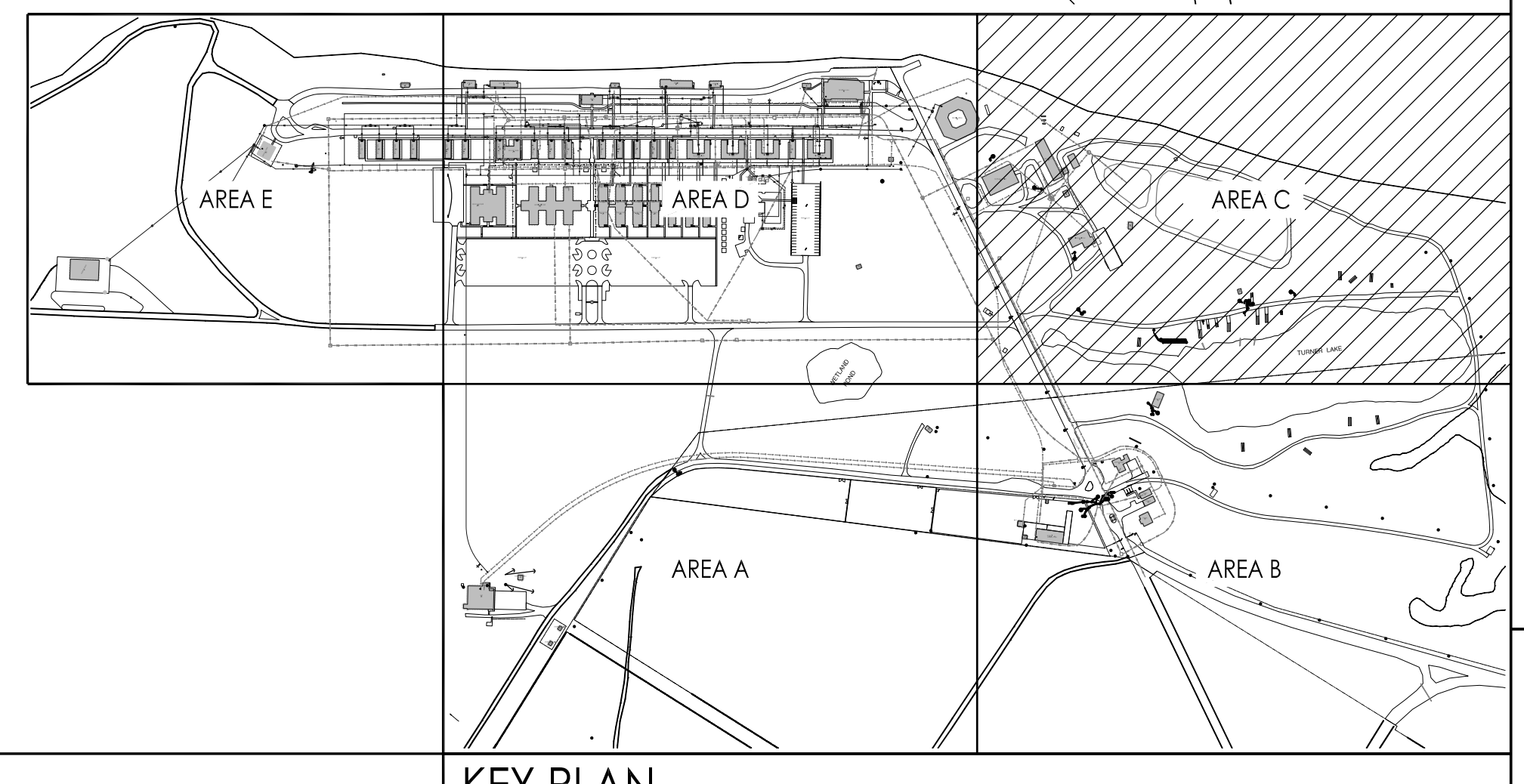
825 M Street, Suite 200 Lincoln, NE 68506  
P 402.476.1273 F 402.476.1274

DATE: JULY 15, 2014	REVISION # - DATE
PROJECT NUMBER: 2014-081	REVISION BY: ADDENDUM NO. 1 06/07/2014
MECH. ENGINEER: N/A	ELECT. ENGINEER: GVL
MECH. TECHNICIAN: N/A	ELECT. TECHNICIAN: CDE



**ELECTRICAL SERVICE UPGRADE PROJECT**  
**CAMP ASHLAND TRAINING SITE**  
**ASHLAND, NEBRASKA**

ELECTRICAL SITE PLAN AREA "C" - ABI NO. 3 & 4

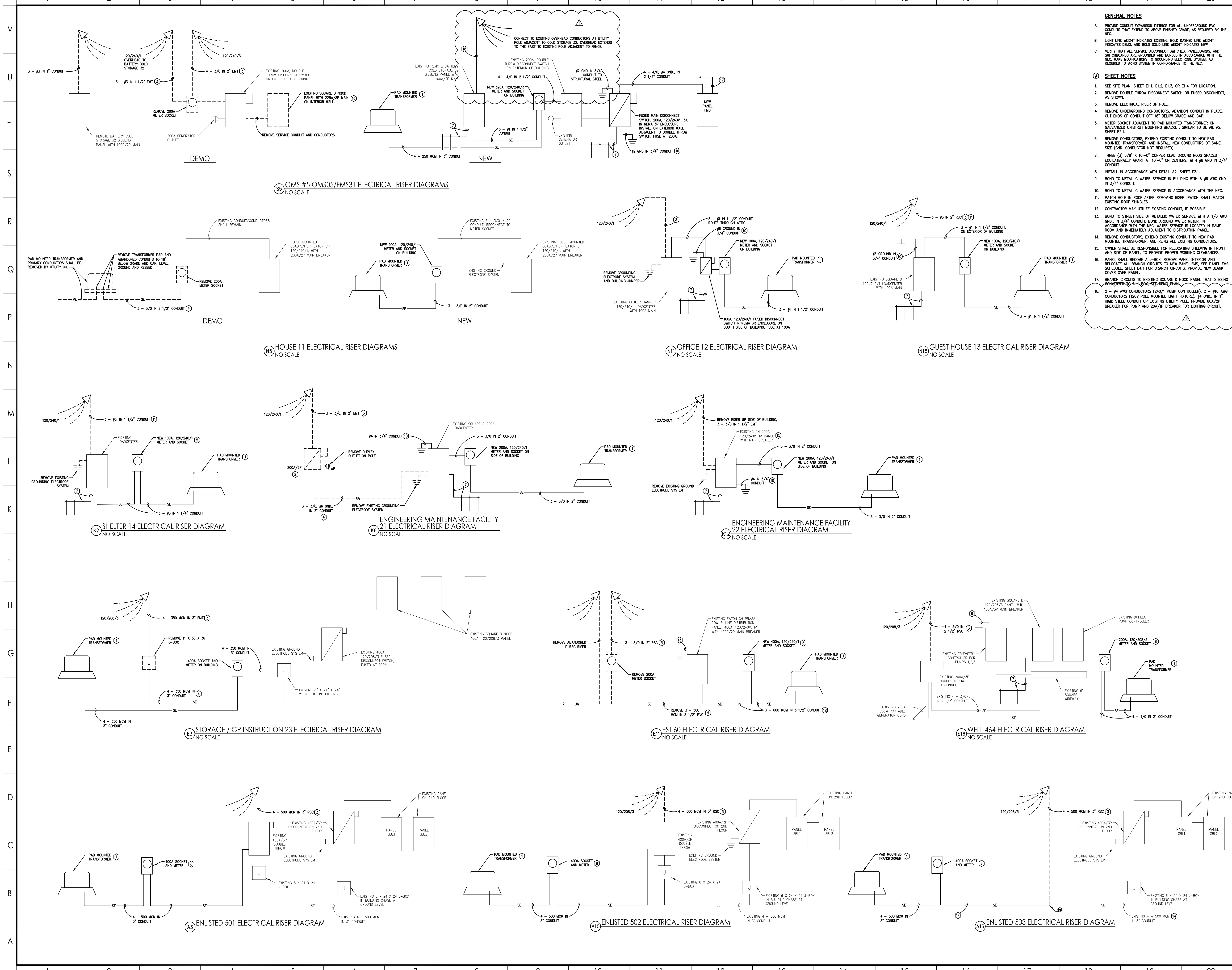


A1 ELECTRICAL SITE PLAN AREA "C" ABI NO. 3 & 4  
SCALE: 1" = 50'-0"

KEY PLAN  
NO SCALE

E1.4R





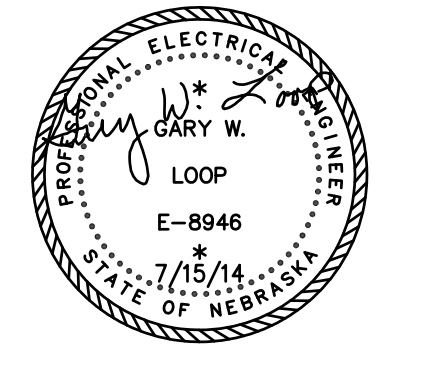
- GENERAL NOTES**
- PROVIDE CONDUIT EXPANSION FITTINGS FOR ALL UNDERGROUND PVC CONDUITS THAT EXTEND TO ABOVE FINISHED GRADE, AS REQUIRED BY THE NEC.
  - LIGHT LINE WEIGHT INDICATES EXISTING, BOLD DASHED LINE WEIGHT INDICATES DEMO, AND BOLD SOLID LINE WEIGHT INDICATES NEW.
  - VERIFY THAT ALL SERVICE DISCONNECT SWITCHES, PANELBOARDS, AND SWITCHBOARDS ARE GROUNDED AND BONDED IN ACCORDANCE WITH THE NEC. MAKE MODIFICATIONS TO GROUNDING ELECTRODE SYSTEM AS REQUIRED TO BRING SYSTEM IN CONFORMANCE TO THE NEC.
- SHEET NOTES**
- SEE SITE PLAN, SHEET E1.1, E1.2, E1.3, OR E1.4 FOR LOCATION.
  - REMOVE DOUBLE THROW DISCONNECT SWITCH OR FUSED DISCONNECT, AS SHOWN.
  - REMOVE ELECTRICAL RISER UP POLE.
  - REMOVE UNDERGROUND CONDUIT, ABANDON CONDUIT IN PLACE. CUT ENDS OF CONDUIT OFF 18" BELOW GRADE AND CAP.
  - METER SOCKET ADJACENT TO PAD MOUNTED TRANSFORMER ON GALVANIZED UNBENT MOUNTING BRACKET, SIMILAR TO DETAIL A2, SHEET E2.1.
  - REMOVE CONDUIT, EXTEND EXISTING CONDUIT TO NEW PAD MOUNTED TRANSFORMER AND INSTALL NEW CONDUCTORS OF SAME SIZE (GND. CONDUCTOR NOT REQUIRED).
  - THREE (3) 5/8" X 10'-0" COPPER CLAD GROUND RODS SPACED EQUILATERALLY APART AT 10'-0" ON CENTERS, WITH #6 GND IN 3/4" CONDUIT.
  - INSTALL IN ACCORDANCE WITH DETAIL A2, SHEET E2.1.
  - BOND TO METALLIC WATER SERVICE IN BUILDING WITH A #6 AWG GND IN 3/4" CONDUIT.
  - BOND TO METALLIC WATER SERVICE IN ACCORDANCE WITH THE NEC. PATCH HOLE IN ROOF AFTER REMOVING RISER. PATCH SHALL MATCH EXISTING ROOF SHINGLES.
  - CONTRACTOR MAY UTILIZE EXISTING CONDUIT, IF POSSIBLE.
  - BOND TO STREET SIDE OF METALLIC WATER SERVICE WITH A 1/0 AWG GND. IN 3/4" CONDUIT. BOND AROUND WATER METER, IN ACCORDANCE WITH THE NEC. WATER SERVICE IS LOCATED IN SAME ROOM AND IMMEDIATELY ADJACENT TO DISTRIBUTION PANEL.
  - REMOVE CONDUIT, EXTEND EXISTING CONDUIT TO NEW PAD MOUNTED TRANSFORMER AND INSTALL NEW CONDUCTORS.
  - OWNER SHALL BE RESPONSIBLE FOR RELOCATING SHELVING IN FRONT AND SIDE OF PANEL, TO PROVIDE PROPER WORKING CLEARANCES.
  - PANEL SHALL BECOME A J-BOX. REMOVE PANEL INTERIOR AND RELOCATE ALL BRANCH CIRCUITS TO NEW PANEL FMS. SEE PANEL FMS SCHEDULE, SHEET E4.1 FOR BRANCH CIRCUITS. PROVIDE NEW BLANK COVER OVER PANEL.
  - BRANCH CIRCUITS TO EXISTING SQUARE D METER PANEL THAT IS BEING CONVERTED TO A J-BOX. SEE DEMO PLAN.
  - 2 - #4 AWG CONDUCTORS (240V PUMP CONTROLLER), 2 - #10 AWG CONDUCTORS (120V POLE MOUNTED LIGHT FIXTURE), #4 GND. IN 1" RIGID STEEL CONDUIT UP EXISTING UTILITY POLE. PROVIDE 60A/2P BREAKER FOR PUMP AND 20A/1P BREAKER FOR LIGHTING CIRCUIT.



1111 North 13th Street Suite 216, Omaha, NE 68137  
P 402.330.2772 F 402.330.2630

825 M Street, Suite 200 Lincoln, NE 68506  
P 402.476.1273 F 402.476.1274

DATE: JULY 15, 2014	REVISION # - DATE
PROJECT NUMBER: 2014-081	REVISY BY ACCORDM NO. 1 08/07/2014
MECH. ENGINEER: N/A	
ELECT. ENGINEER: GVL	
MECH. TECHNICIAN: N/A	
ELECT. TECHNICIAN: CDE	



ELECTRICAL SERVICE UPGRADE PROJECT  
CAMP ASHLAND TRAINING SITE  
ASHLAND, NEBRASKA

ELECTRICAL RISER DIAGRAMS

