

Lincoln Public Schools  
Phase 1 – Grounds/Data Center Parking Lot Improvements

ADDENDUM #1 SUMMARY  
August 1, 2014

The addendum is issued by the Engineer to all known bidders before receipt of proposals, for the purpose of explaining, interpreting, or modifying the original plans and specifications. When enumerated by the bidder on the bid form, the information or instructions given hereon will be equally binding upon all parties as if included in the original plans and specifications.

***BIDDER MUST ENTER THE ADDENDUM NUMBER ON THEIR BID FORM***

**Addendum #1 – Item 1**

CLARIFICATION:

Construction staking must be provided by Contractor for the project.

**Addendum #1 – Item 2**

PLAN SHEET REVISIONS:

Remove and Reset Bollards as indicated on attached Demo Revision – Addendum 1

**Addendum #1 – Item 3**

PLAN SHEET REVISIONS:

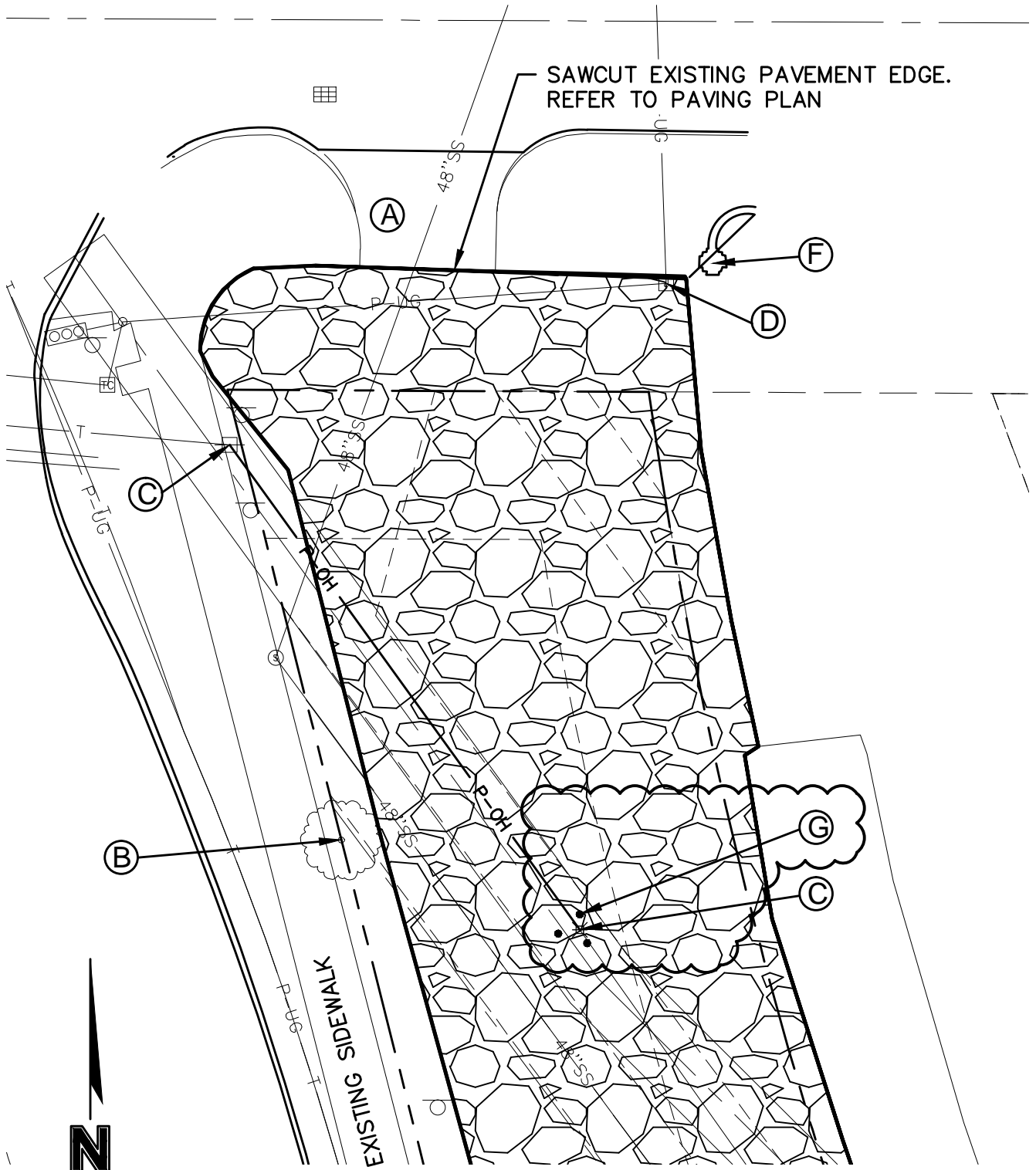
Perform fine grading and backfill existing washout as indicated on attached Grading Revision – Addendum 1

**Addendum #1 – Item 4**

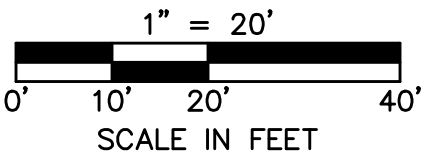
PLAN SHEET REVISIONS:

Install 4” concrete surfacing on parking island as indicated on attached Paving Revision – Addendum 1

END OF ADDENDUM #1



**G** REMOVE AND RESET BOLLARD (REFER TO PAVING PLAN)



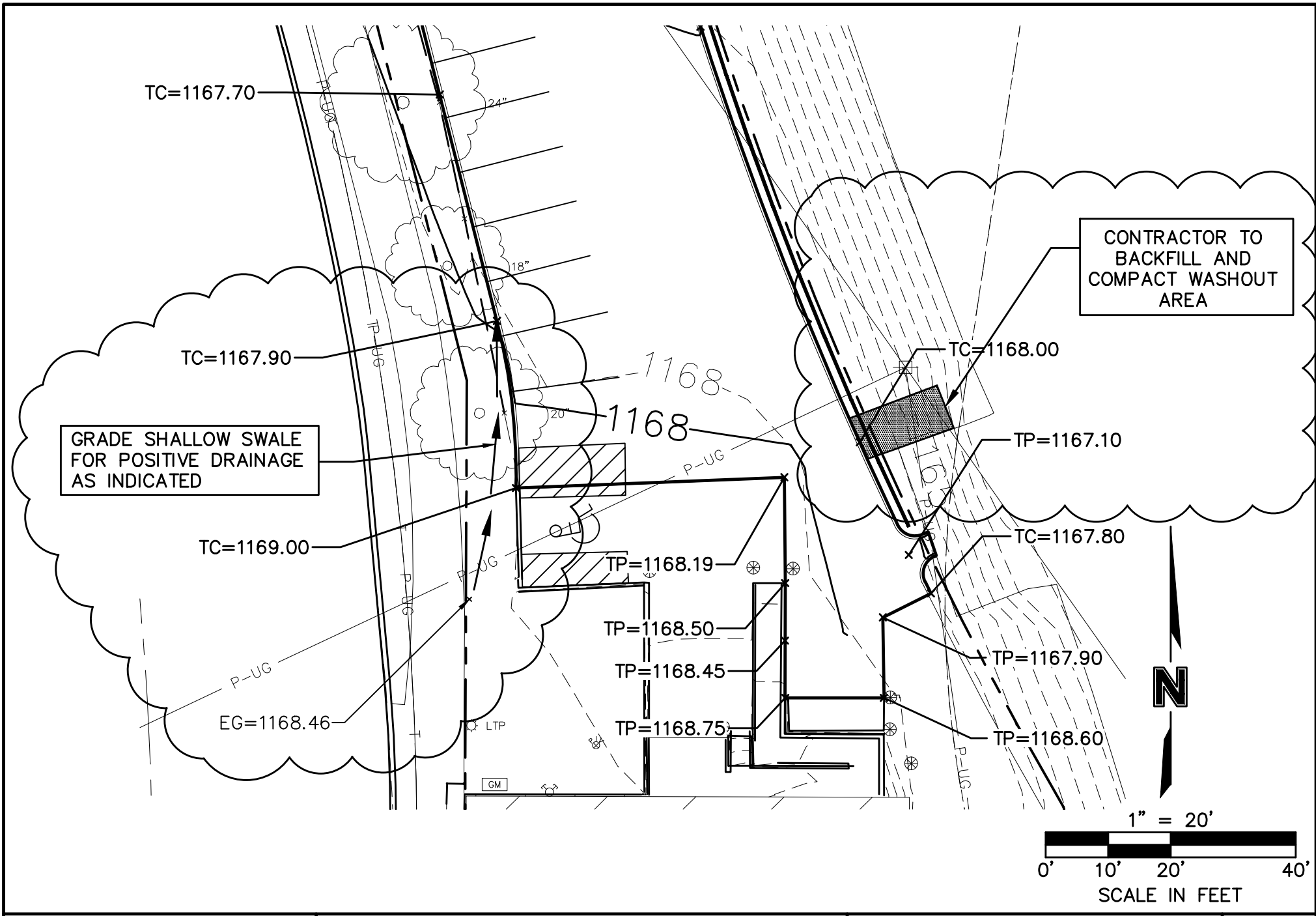
PROJECT NO: 012-1909  
 DRAWN BY: JEF  
 DATE: 07.31.2014

LPS DATA CENTER  
 DEMO REVISION



1111 Lincoln Mall, Suite 111  
 P.O. Box 84608  
 Lincoln, NE 68501-4608  
 TEL 402.474.6311  
 FAX 402.474.5160

ADDENDUM



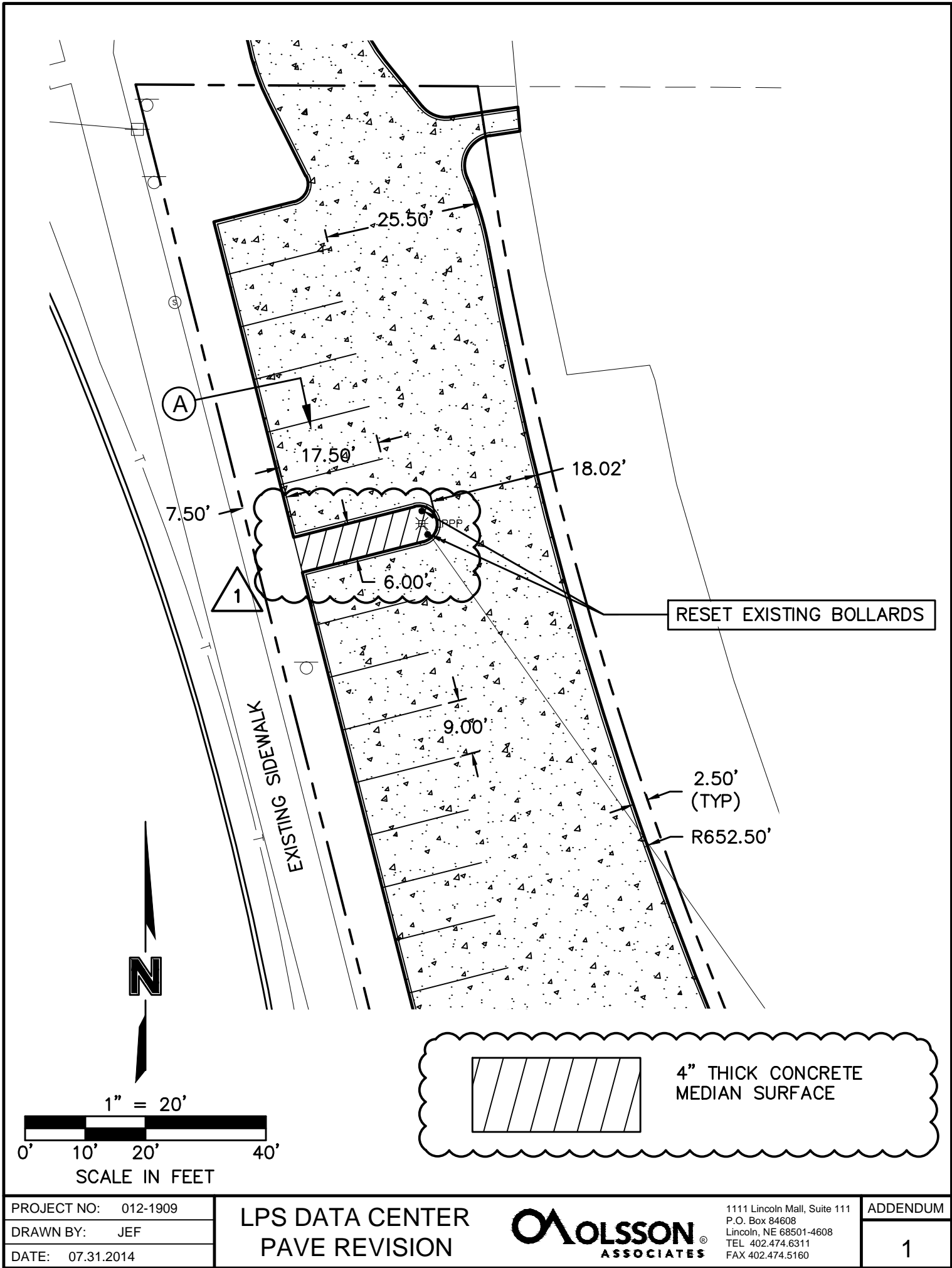
PROJECT NO:	012-1909
DRAWN BY:	JEF
DATE:	07.31.2014

LPS DATA CENTER- GRADING REVISION

**MOLSSON**  
ASSOCIATES

1111 Lincoln Mall, Suite 111  
P.O. Box 84608  
Lincoln, NE 68501-4608  
TEL. 402.474.6311  
FAX 402.474.5160

ADDENDUM
1



PROJECT NO: 012-1909  
 DRAWN BY: JEF  
 DATE: 07.31.2014

LPS DATA CENTER  
 PAVE REVISION



1111 Lincoln Mall, Suite 111  
 P.O. Box 84608  
 Lincoln, NE 68501-4608  
 TEL 402.474.6311  
 FAX 402.474.5160

ADDENDUM  
 1