



PROJECT:	Nebraska State Patrol Crime Lab	PROJECT NO.	#L13459
FROM:	BVH Architects	DATE:	7/15/14
TO:	Bidders	ADDENDUM NO.	#3

This Addendum is issued by the Architect to all bidders of record prior to receipt of proposals. Bidders shall acknowledge receipt of this addendum by so indicating on the Proposal Form. Failure to do so may subject Bidder to disqualification.

All information and instructions given herein shall become a part of the Contract Documents.

GENERAL

1. The selected General Contractor will be responsible for coordinating with the Federal Aviation Administration (FAA) regarding crane height restrictions utilizing FAA form 7460 "Notice of Proposed Construction or Alteration".
2. The Selected General Contractor shall assume responsibility of the Storm Water Pollution Prevention Plan (SWPPP) issued as part of the pre-bid soil conditioning package. General Contractor's responsibility shall commence on August 15 through the duration of the construction schedule.
3. Services of Submittal Exchange have already been procured. General Contractors will not be required to carry the cost of the service as a line item in the General Conditions.
4. General Contractors shall list and submit with their bid form the Mechanical and Electrical Subcontractors with associated references. A listing of all other subcontractors identified shall be submitted the following day.
5. A Schedule of Values will not be required as an attachment to the Bid Form.

PROJECT MANUAL –SHELL PACKAGE

1. AIA Document A201 Section 11.3 Property Insurance: General Contractors will be responsible for the "All Risk Property Insurance" for the project as called for in the Project Manual. All items as listed in the Supplementary Conditions regarding insurance requirements shall apply.
2. Section 054000 Cold Formed Metal Framing: Exterior stud framing shall be 16 gauge.
3. Section 072510 Fluid Applied Membrane Air Barriers: Enershield –HP as manufactured by BASF Wall Systems is approved to bid.
4. Section 077200 Roof Accessories: Roof hatch shall be 3'-6" (w) x 5'-0" (L).
5. Section 088000 Exterior Glazing: Alternate No. 5 "Security Film" shall be applied to glazing types 1 and 3. Disregard schedule of security film as identified in Addendum No. 2.
6. Section 101400 Signage: Exterior signage shall be composed of individual lettering. Dimensions of lettering shall be 12" in height. Lettering style: Arial.

CIVIL DRAWINGS

1. See attached drawing labeled sheet 1 from Alfred Benesch and Company for information regarding parking lot security gate.

STRUCTURAL DRAWINGS–SHELL PACKAGE

1. See Voss and Associates structural drawings S1 attached with this addendum for revisions to structural drawings.

ARCHITECTURAL PROJECT MANUAL – TENANT IMPROVEMENT PACKAGE

1. Section 092216 Non-Structural Metal Framing: Revise gauge of interior metal framing from 25 gauge material to 20 gauge material.
2. See attached DLR Group Addendum No. CC-3 for additional Project Manual revisions

ARCHITECTURAL DRAWINGS – TENANT IMPROVEMENT PACKAGE

1. See attached DLR Group Addendum No. CC-3 for additional Drawing revisions.

MECHANICAL AND ELECTRICAL – SHELL AND TENANT IMPROVEMENT PACKAGE

1. See Olsson and Associates addendum pages 1-2 attached with this addendum for revisions to the Project Manual and drawings as it relates to Mechanical and Electrical scopes of work.

END OF ADDENDUM



PROVIDE DISCONNECT

PROVIDE 120V OUTLET

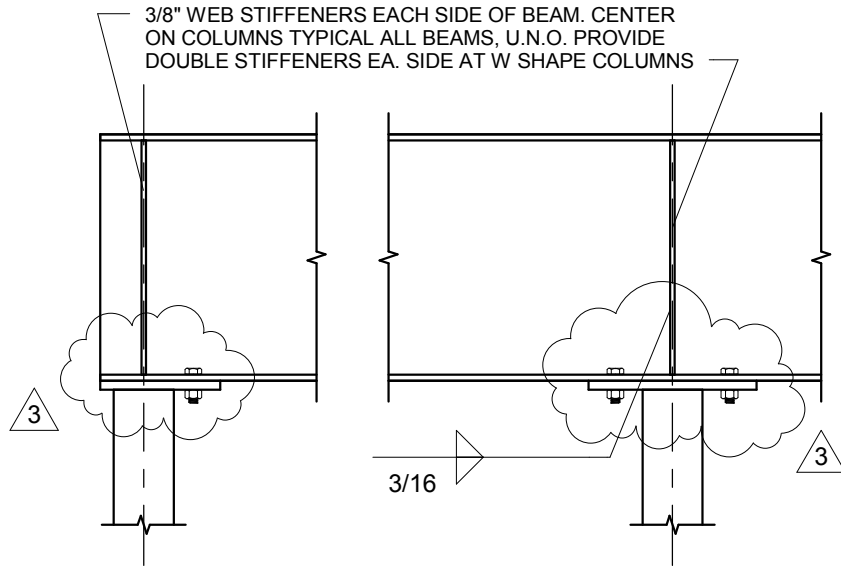
GATE OPERATOR

OSCO GSLG OPRATOR, 1 HP, 208V WITH AUXILIARY LIMIT & HEATER BOX.



CARD READER

SEE ELECTRICAL DRAWINGS FOR CARD READER SPECIFICATIONS.



REF. SHEET S1.1-S (STANDARD STEEL CONNECTION SCHEDULE)

Date	07/14/14	VOSS & ASSOCIATES Inc. STRUCTURAL ENGINEERS	
Project Name	Nebraska State Patrol Crime Lab	SHEET	Add. No. 3 S1

ADDENDUM NO. CC-3

NEBRASKA STATE CRIME LAB
LINCOLN, NEBRASKA
DLR GROUP PROJECT NO. 10-13212-00

COMBINED CONTRACT

July 15, 2014

NOTICE TO BIDDERS: Amend the Project Manual and Drawings to the above referenced project as follows:

PROJECT MANUAL

ITEM NO. 1 SECTION 099600 – HIGH-PERFORMANCE COATINGS

- A. Subparagraph 2.3.A.1 – Add “Florock is an accepted manufacturer.”

DRAWINGSITEM NO. 1 SHEET A0.1-TI - ROOM FINISH SCHEDULE, GENERAL NOTES & WALL TYPES

- A. Add Attachment A0 to Sheet A0.1-TI

ITEM NO. 2 SHEET A1.1-TI – ARCHITECTURAL FLOOR PLAN – TENANT IMPROVEMENT

- A. Revise drawing per Attachment A1

ITEM NO. 3 SHEET A9.2-TI – INTERIOR DOOR AND FRAME SCHEDULE

- A. DOOR AND FRAME SCHEDULE

1. Add the following door to the door schedule:

Door Number – 170A

Door

No. of Panels – 1
Width – 3'-0"
Height – 7'-0"
Thickness – 1 ¾"
Material - WD
Type - C

Frame

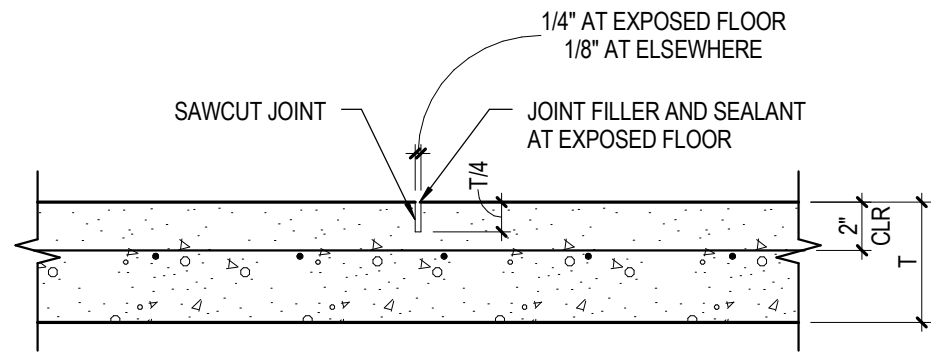
Depth – 8 ¼"
Material - HM
Type - 1

Hardware Set - 21

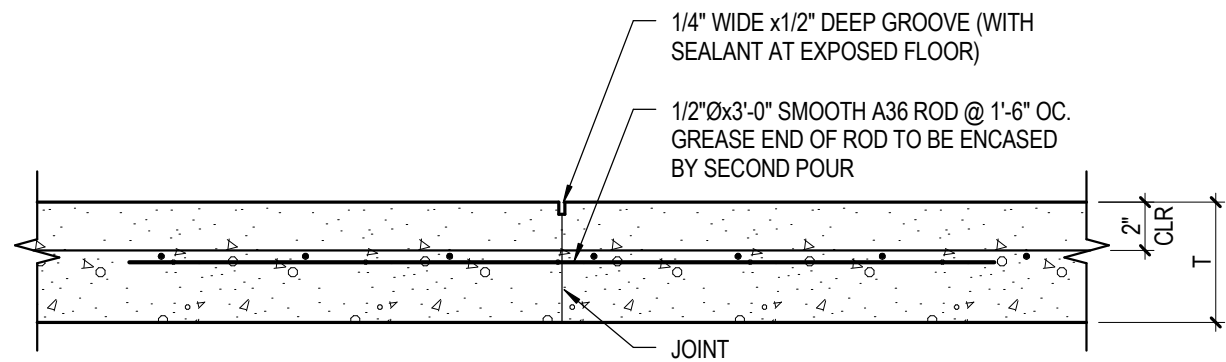
Fire Rating – N/A

Comments – GASKETED & LOCAL ALARM W/ DPS

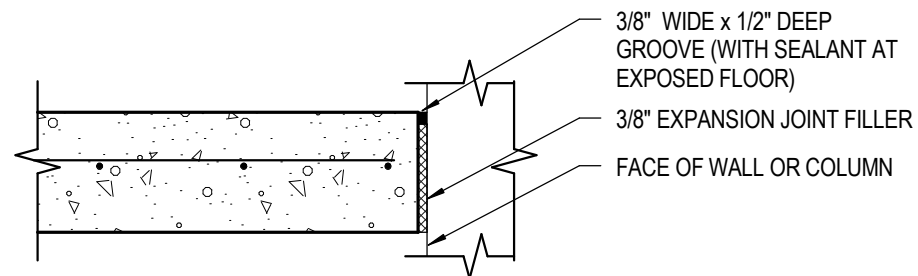
END OF ADDENDUM



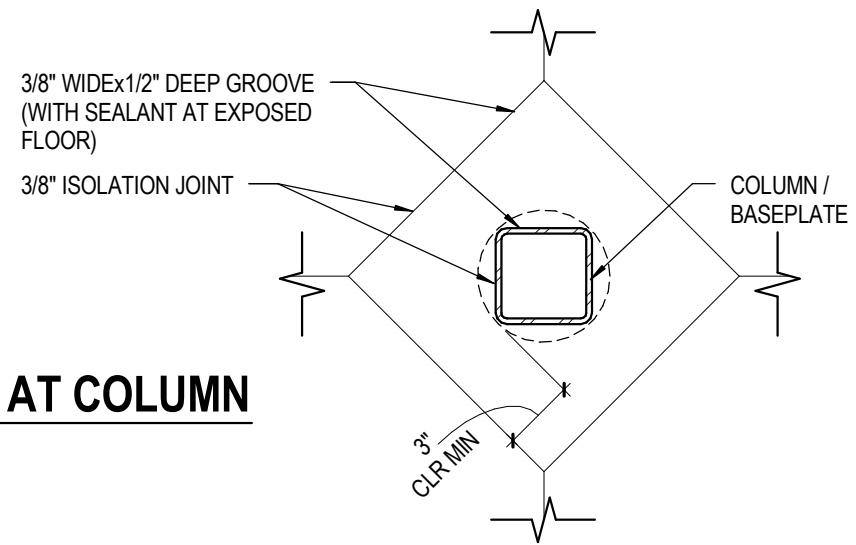
A CONTROL (CONTRACTION) JOINT (CJ)



B CONSTRUCTION JOINT (CONST JT)



C ISOLATION JOINT (IJ)



D ISOLATION JOINT AT COLUMN

NOTE: TYPICAL SLAB CONDITION
 4" CONCRETE SLAB-ON GRADE WITH
 6"x6" - W1.4XW1.4 WWF OVER VAPOR
 BARRIER ON GRANULAR FILL.
 THICKENED SLAB (8") AT BUILDING PERIMETER
 TYP FINISH FLOOR EL=100'-0"

145 TYP SLAB-ON-GRADE JOINTS
 A0.1-TI SCALE: 1 1/2" = 1'-0"

ADDENDUM NO. 3

Nebraska State Patrol Crime Lab
Lincoln, Nebraska - 2014
OA Project No. 014/A14-0651

This Addendum is issued by Olsson Associates to all Plan Holders of record. This Addendum shall be made part of the Contract Documents. Please acknowledge receipt of this Addendum in the space provided on the Bid Proposal Form. Failure to do so may subject Bidder to disqualification.

The following items are for the Shell Package.

Electrical Technical Specifications:

1. The following manufacturers are approved for the products listed.

260526 Grounding and Bonding for Electrical Systems Preferred Lighting Protection

Electrical Drawings:

1. Sheet E0.1-S, Electrical Site Plan.

- a. The information for the card reader in Addendum #2 was incorrect. The card reader for the sliding gate will be provided by the access control provider, not the gate provider.

The following items are for the Tenant Improvement Package

Mechanical Technical Specifications:

1. Refer to Section 212200 – Clean-Agent Fire-Extinguishing Systems.

- a. Remove Part 1.6, Maintenance Material Submittals, from the specification.

- b. Part 2.1 Clean-Agent Systems, replace paragraph “B” with the following:

“Description: Clean-agent fire-extinguishing system shall be an engineered system for total flooding of the hazard area below the ceiling.”

- c. Part 2.9 Detection Devices, remove paragraph ‘D’ from the specification. A remote air-sampling detector system is not required for this project.
- d. Part 2.11 Switches, Paragraph ‘A’, remove number ‘3’ from the specification. Doors into these rooms shall remain closed at all times.
- e. Part 3.3 Clean-Agent Piping Installation, remove paragraph ‘B’ from the specification. Piping shall be threaded or welded per Part 3.2 of this specification.

2. Refer to Section 233600 – Air Terminal Units.

- a. Part 2.3 Shut-off, Single-Duct Air Terminal Units, Paragraph 'C':

Remove "double wall" from the end of the sentence. Boxes shall have 1" fiber free liner per the Office Supply Valves with HW Reheat Schedule on sheet M7.2-TI.

Mechanical Drawings:

1. Sheet M3.3-TI, Laboratory Gas Piping Plan – Tenant Improvement.

- a. In Instrument Lab 145, extend 3/8" helium gas piping inside bench to lab equipment supplier installed bench outlet provided for Lab Equipment item 'T1' at the south end of the 4th island. See sheet LC1.3-TI for exact location item 'T1'.

2. Sheet M7.2-TI, Mechanical Schedules – Tenant Improvement.

- a. Clarification for the Lab Supply and Exhaust Valves schedules:

All supply/exhaust valves shall be fully modulating. Two position valves shall not be used, even for valves noted to be controlled via a switch, as the unoccupied CFMs may be different than the occupied high/low switch CFMs.

- b. Clarification for the Lab/General Exhaust Valves schedules:

Exhaust valves with a minimum occupied CFM of '0' shall be capable of having full shut-off capability. The remainder of the valves may be standard type.

- c. Remove EV-177 from the Lab/General Exhaust Valve Schedule. It is a duplicate of EV-178A and is not shown on the floor plans.

Electrical Technical Specifications:

1. The following manufacturers are approved for the products listed.

260526 Grounding and Bonding for Electrical Systems Preferred Lighting Protection
265100, E6.3-TI Interior Lighting: Mercury - Types R1, R2; Mule Lighting – Types U1, X1, X2, X3

Electrical Drawings:

1. Sheet E1.1-TI, Lighting Plan – Tenant Improvement.

- a. Add exit signs type "X1" above the following doors: 140, 157, 159A, 170A, 181, 181A, and 182B. Connect to Panel "HLS1" life safety circuit serving that area.
b. Exit sign in Corridor 118 along column line "N" shall be a type "X2" in lieu of type "X1".

2. Sheet E3.1-TI, Special Systems Plan – Tenant Improvement.

- a. Toxicology 144, add a data outlet on the north wall to serve equipment "TX2".
b. PRT/Shop 152, add a data outlet to the raceway on the east wall.
c. Adobe 154, add a data outlet adjacent to each receptacle serving equipment "FA2a" and "FA2b" to network the two pieces of equipment. Total of 2 data outlets.

Attachments: N/A

END OF ADDENDUM NO. 3