

Date: 7.10.2014

Project: LPS Project D
Bid Package #7636-D

To: Bidding Contractors

Project No.: 14-022

Addendum No.: 1

CC:

CHANGES TO PROJECT MANUAL

27 05 53.01 – Identification for Communications Systems

1. Paragraph 3.1.C: Add the following to this paragraph – Labeling of cables shall also include all patch cables routed in classrooms. All cables (to include patch cables) shall be labeled at each end per Detail 5, Sheet 000.C105.

CHANGES TO PROJECT DRAWINGS

000.C103 LPS Standard Telecom Cable Management Details

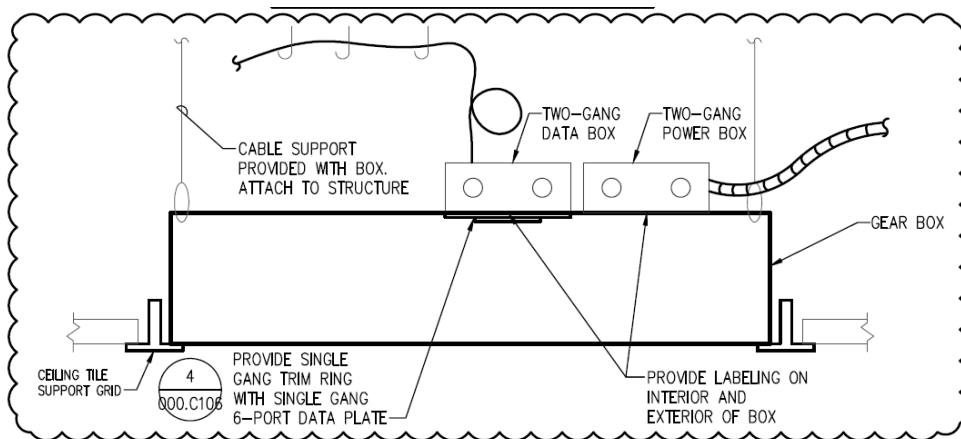
Detail 10 & 11 – EZ Path Series 44

1. Add the following note to each detail: 2" or 4" fire stop devices as manufactured by Hilti are equally acceptable.

000.C105 LPS Standard Telecom Pathway Details

Detail 10 – AV Gearbox

1. Clarification: detail indicates to provide labeling on interior and exterior of box for Data j-box and Receptacle J-box. Contractor shall also provide labeling at exterior of Gearbox to indicate closet, rack, patch panel, jack #, etc. for data cabling and also panel & circuit info of receptacles. These labels shall be clearly visible at the exterior underside of the Gearbox.
2. See below for revised AV Gearbox detail with changes clouded.



AV GEAR BOX

NO SCALE

10
000.C105



Sheet Notes – General Notes

Add the following General Notes to all Building Telecommunications Floor Plans

- A. At all locations in classrooms where new receptacles are shown to be installed at existing walls, install new receptacle devices and power raceway in the same manner (recessed or surface mounted) as the new telecomm/AV devices are shown. Ex. For an 'R3' rough-in type, power raceway and receptacles shall be installed surface mounted on 700 series Wiremold, color to match existing. For 'R1' or 'R6' rough-in type, power raceway and receptacles shall be installed concealed. Cut, patch, repair, paint wall as required to match existing finish.
- B. Provide 2U horizontal wire management at existing telecommunication racks, per LPS standard details, where new patch panels are to be installed.

124.000 Belmont Elementary School

124.T01.C – First Level – Area C - Telecommunications Plan

1. 187M Mech: Delete keynote 1 in this room and do not install 2-4" c. as noted. New cabling and innerduct shall be supported by j-hooks in this area. Provide 1-3" c. sleeve through south and north wall for cabling pathway.
2. 187B/187G/187J: Delete keynote 1 in this area and do not install 2-4" c. as noted. New cabling shall be installed in the existing 2-4" c. routed above the ceiling in these areas.

124.T02.A – Second Level – Area A - Telecommunications Plan

3. Delete (1) quad receptacle at racks in Data 229A (TC-A). Provide cable tray tee & install the (3) remaining quad receptacles as detailed in rack elevations on sheet 000.C102, see attached drawing AD01.124.T02.A-1.
4. Relocate floor penetrations in Data 229A (TC-A) to west wall, see attached drawing AD01.124.T02.A-1.

124.T02.B – Second Level – Area B - Telecommunications Plan

5. At circulation desk in Library 201, remove old cabling at (2) existing telephone locations & route (1) new CAT 6 cable to each location & terminate at new jack. Reuse existing raceways.

136.000 Elliott Elementary School

136.T00.B – Lower Level – Area B - Telecommunications Plan

1. Delete (1) quad receptacle at racks in Comm B113B (TC-A). Install the (3) remaining quad receptacles as detailed in rack elevations on sheet 000.C102.

139.000 Hartley Elementary School

139.T01 – First Level – Area A – Telecommunications Plan

1. Add keynote 10 to existing data outlet on west wall, adjacent door, in Classroom 101. "Disconnect & reroute (1) CAT 6 cable to AV gearbox & terminate. Existing cable/jack at wall to remain. Provide port blanks at existing faceplate".

139.T02 – Second Level – Area A – Telecommunications Plan

2. 203 Literacy: Revise new outlets on north wall from rough-in type 'R6' to type 'R3'.

140.000 Fredstrom Elementary School



140.T01.A – First Level – Area A - Telecommunications Plan

1. Classrooms 141/142/152/153: see attached drawing AD01.140.T01.A-1 with revisions for HDMI projection wall connections. Install new surface mount raceway and boxes for HDMI cabling as indicated. Delete keynote 3 and see new keynotes 16 & 17.

140.T01.B – First Level – Area B - Telecommunications Plan

1. Classrooms 121/122/131/132: see attached drawing AD01.140.T01.B-1 with revisions for HDMI projection wall connections. Install new surface mount raceway and boxes for HDMI cabling as indicated. Delete keynote 3 and see new keynotes 14 & 15.
2. Delete (1) quad receptacle at racks in Custodial 181C (TC-A). Install the (3) remaining quad receptacles as detailed in rack elevations on sheet 000.C102.

144.000 Huntington Elementary School

144.T01.A – First Level – Area A - Telecommunications Plan

1. Revise keynote 20 - change CAT 6A to CAT 6. "Typical. Wall phone at teacher's desk location. Route (1) CAT 6 pre-terminated patch cable to AV gearbox. Terminate to wall outlet".

144.T01.B – First Level – Area B - Telecommunications Plan

2. Revise keynote 13 - change CAT 6A to CAT 6. "Typical. Wall phone at teacher's desk location. Route (1) CAT 6 pre-terminated patch cable to AV gearbox. Terminate to wall outlet".

144.T02.A – Second Level – Area A - Telecommunications Plan

3. Revise keynote 9 - change CAT 6A to CAT 6. "Typical. Wall phone at teacher's desk location. Route (1) CAT 6 pre-terminated patch cable to AV gearbox. Terminate to wall outlet".
4. Relocate wireless access point (WAP) in Corridor 300 from west side to east side. Stub 1" C thru wall above accessible ceiling in Classroom 309 to backside of WAP. Route new cabling to Comm 320 (TC-C).

149.000 Lakeview Elementary School

149.T01.A – First Level – Area A – Telecommunications Plan

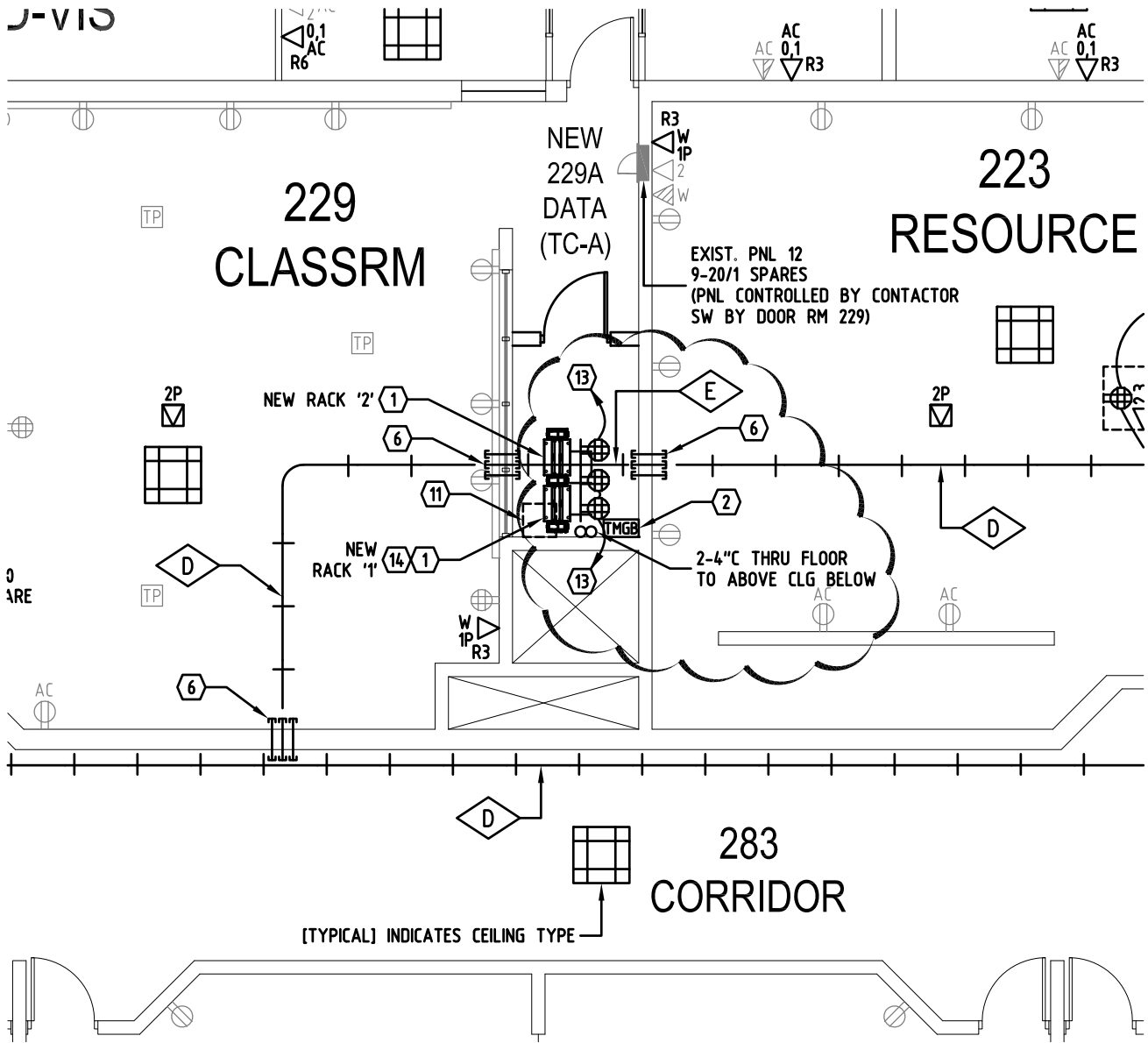
1. A new CAT 6 cable is not required at the projector location. (1) CAT 6 to be rerouted from existing data outlet below - refer to keynote 11.

213.000 Goodrich Middle School

213.T01.D – First Level – Area D – Telecommunications Plan

1. 185K Stor (TC-D) – Existing Rack '1': There is an existing green ground wire installed to the rack location, but is not currently terminated. Contractor shall terminate ground to equipment rack.

By: Jason Leu	Date: 7.10.2014
----------------------	------------------------



SECOND LEVEL - AREA A TELECOMMUNICATIONS PLAN

SCALE: 1/8" = 1'-0"

4630 Antelope Creek Rd Ste 200
 P: 402-488-0075 / F: 402-488-0272

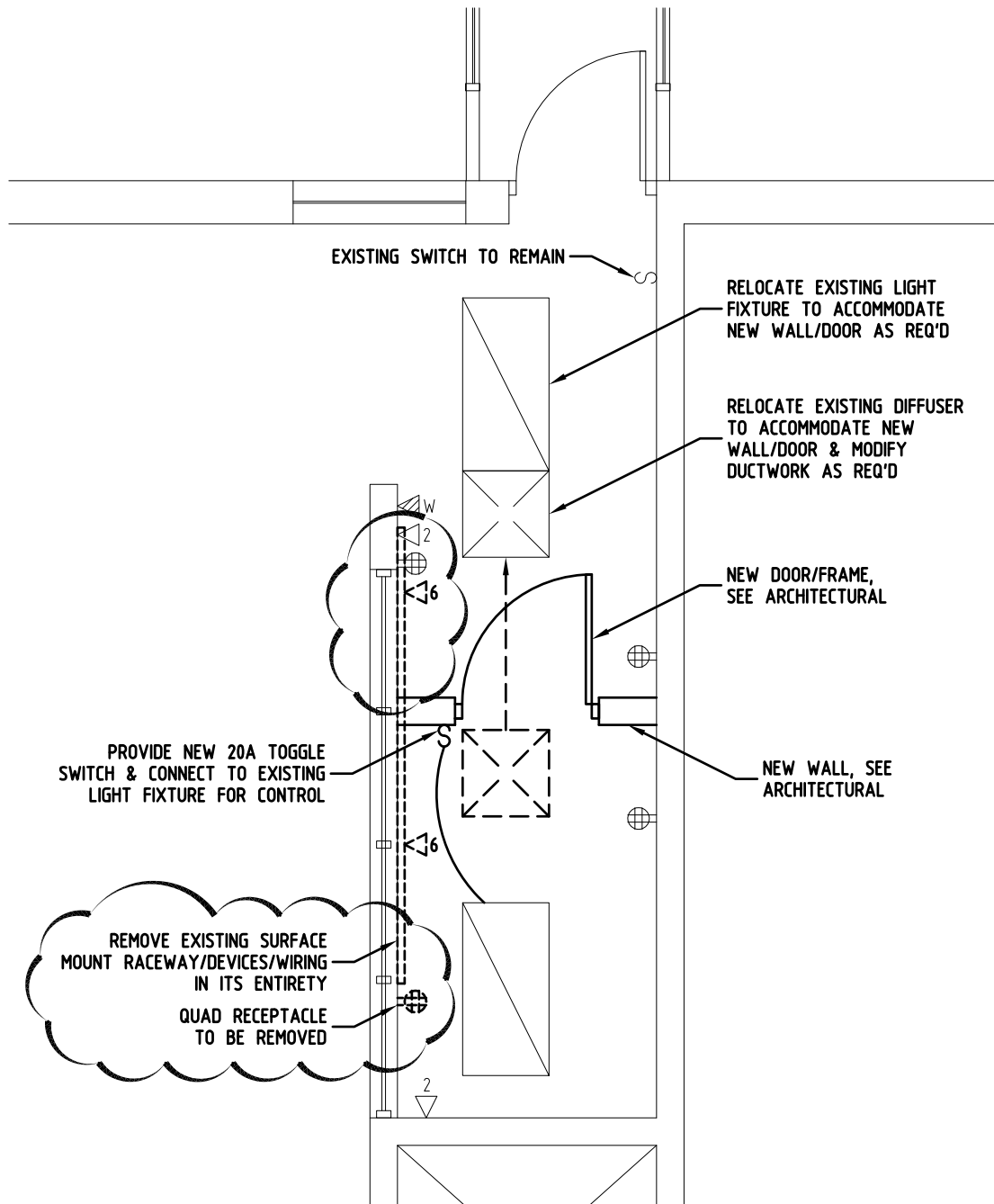
www.a-e-sys.com

620 N. 129th Street, Omaha, NE 68154
 P: 402-504-3885 / F: 402-504-4598



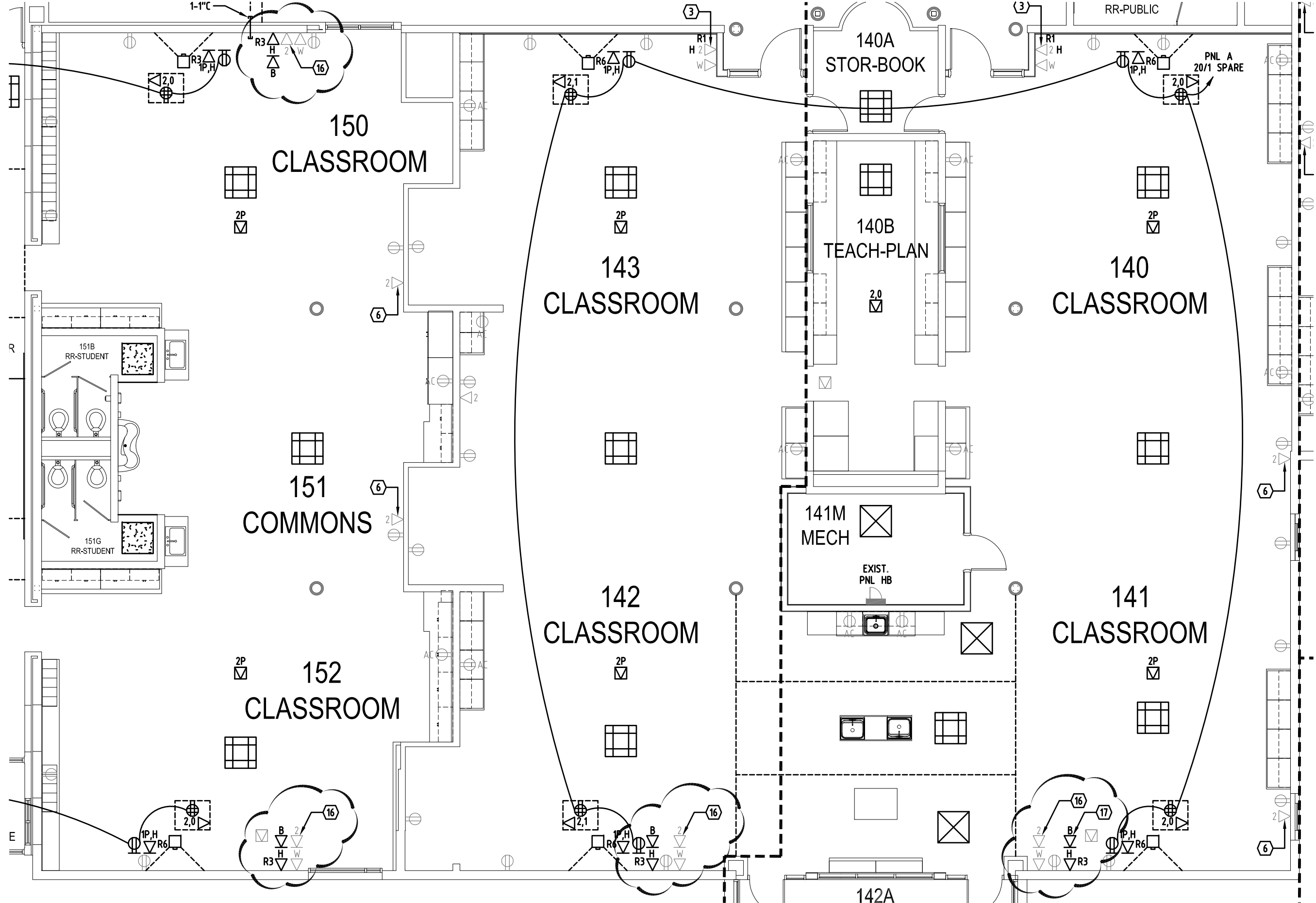
LPS Security/Technology Ready
 PROJECT: Facilities Project D
 Belmont Elementary School
 PROJECT #: 14-022
 DESCRIPTION: Addendum #1

SHEET:
124.T02.A
 DRAWING #:
 AD01.124.T02.A-1



DATA 229A (TC-A)
1 ENLARGED PLAN

SCALE: 1/4" = 1'-0"



FIRST LEVEL - AREA A TELECOMMUNICATIONS PLAN



SCALE: 1/8" = 1'-0"

KEY NOTES

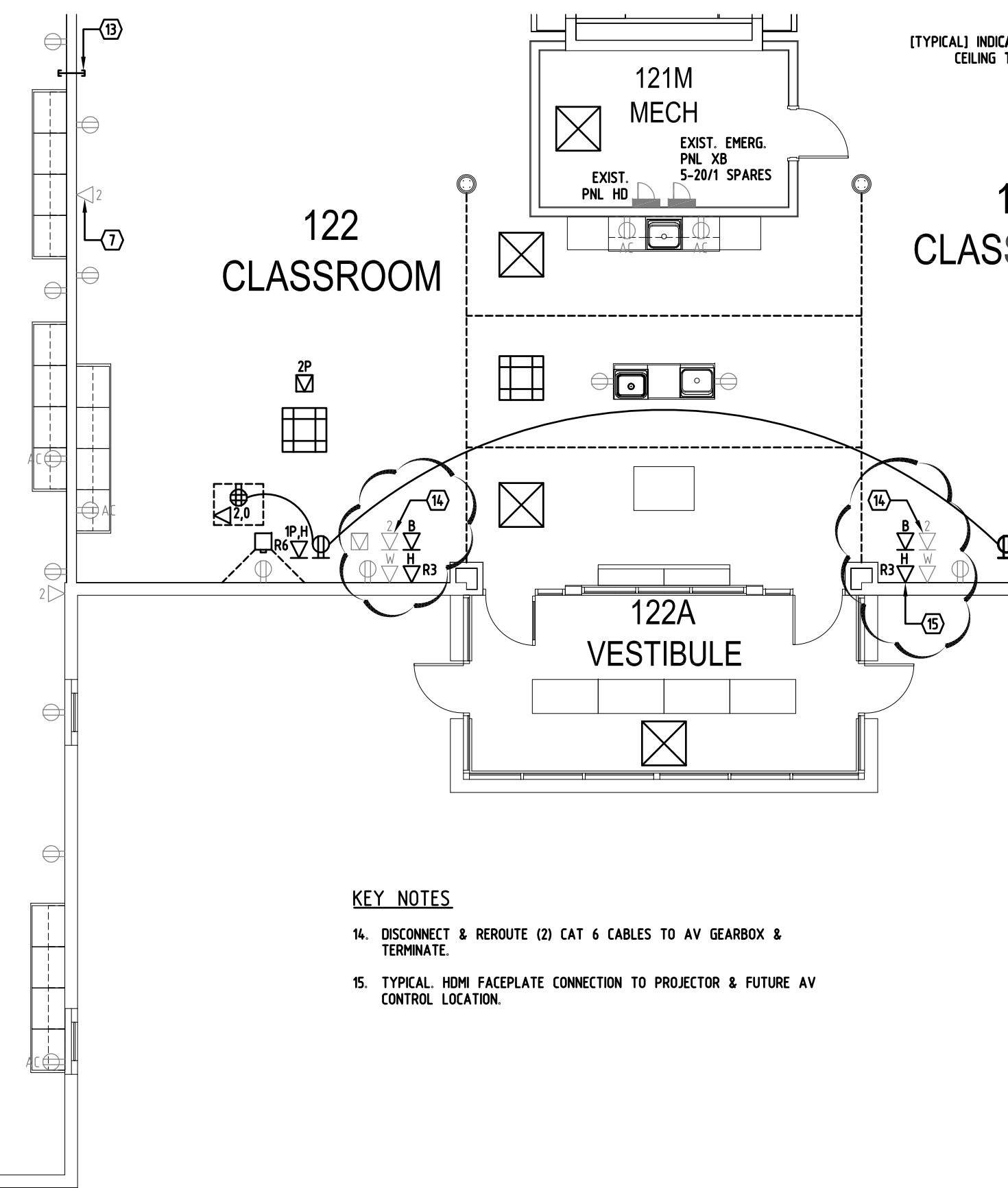
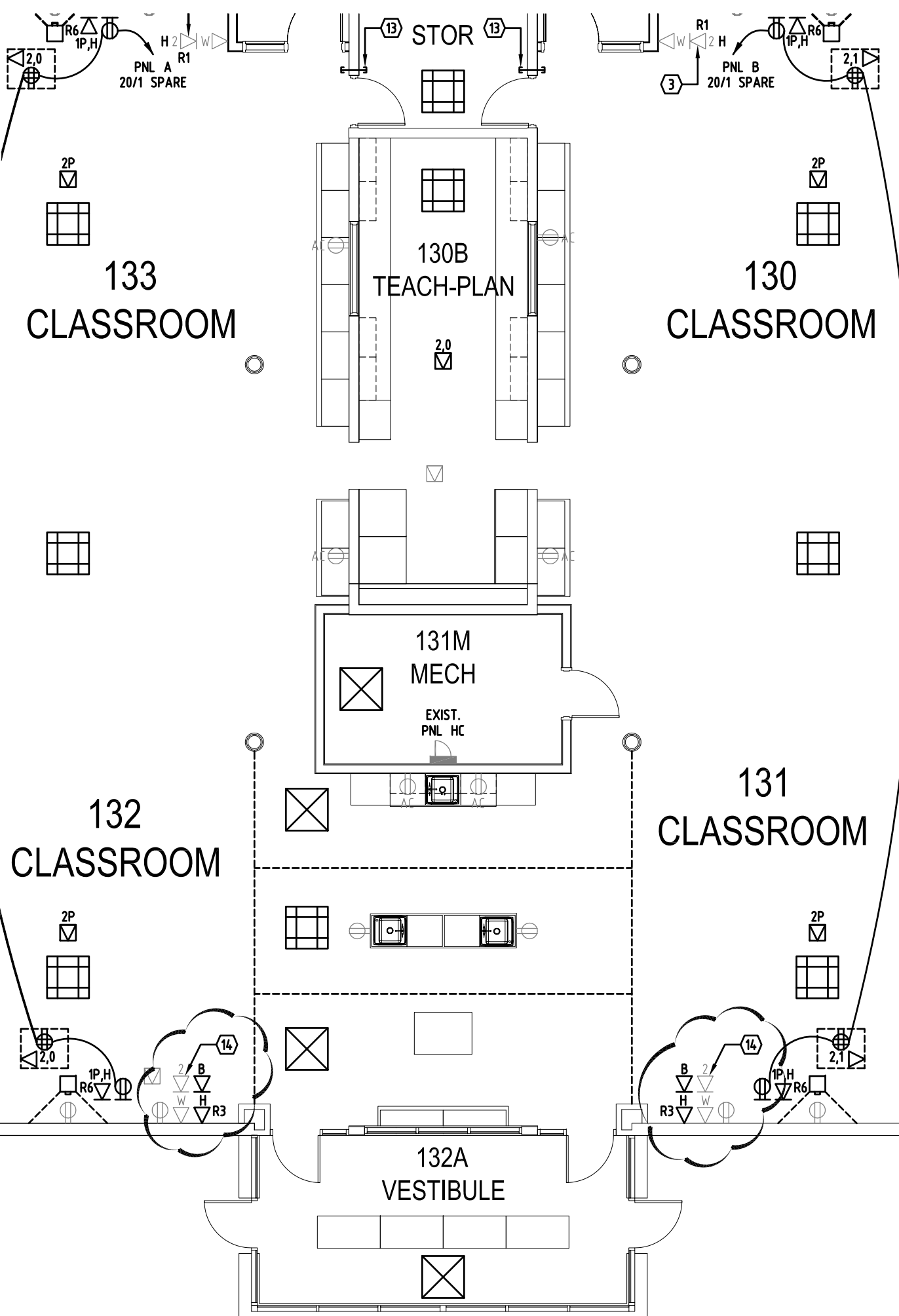
16. DISCONNECT & REROUTE (2) CAT 6 CABLES TO AV GEARBOX & TERMINATE.
17. TYPICAL HDMI FACEPLATE CONNECTION TO PROJECTOR & FUTURE AV CONTROL LOCATION.

4630 Antelope Creek Rd Ste 200 • Lincoln, NE 68506 • P: 402-488-0075 • F: 402-488-0272 • www.a-e-sys.com

SHEET: **140.T01.A**
DRAWING #: AD01.140.T01.A-1

PROJECT: LPS Security/Technology Ready Facilities Project D
Fredstrom Elementary School
PROJECT #: 14-022
DESCRIPTION: Addendum #1





- KEY NOTES**
- 14. DISCONNECT & REROUTE (2) CAT 6 CABLES TO AV GEARBOX & TERMINATE.
 - 15. TYPICAL. HDMI FACEPLATE CONNECTION TO PROJECTOR & FUTURE AV CONTROL LOCATION.

FIRST LEVEL - AREA B TELECOMMUNICATIONS PLAN

SCALE: 1/8" = 1'-0"

[TYPICAL] INDICATE
CEILING T