



ADDENDUM NO. 1 FINAL CD DRAWINGS

Page 1 of 25

Project: All Saints Catholic Church and School

Project No.: L11011.1

Location: Holdrege, Nebraska

Date: June 16, 2014

This Addendum is issued by the Architect to all bidders of record prior to receipt of proposals. Bidders shall acknowledge receipt of this addendum by so indicating on the Proposal Form. Failure to do so may subject Bidder to disqualification.

All information and instructions given herein shall become a part of the Contract Documents.

1.01 PROJECT MANUAL - ARCHITECTURAL

- A. SECTION 033000 – CAST-IN-PLACE CONCRETE
 - 2.05 Manufacturers
 - B. Additional approved manufacturers
 - 1. Inteplast Group – Barrier-Bac VB-350
- B. SECTION 075300 – ELASTOMERIC MEMBRANE ROOFING
 - 2.01 Manufacturers
 - B. Additional approved manufacturers
 - 1. GenFlex Roofing Systems
 - 2.03 ROOFING MEMBRANE AND ASSOCIATED MATERIALS
 - 2. Remove from item A. "externally reinforced with fabric;"
- C. SECTION 076200 - SHEET METAL FLASHING AND TRIM
 - 2.01 Sheet Materials
 - Change Pre-Finished Aluminum: from .08 to 0.063 inch thick:
- D. SECTION 084313 – ALUMINUM FRAMED STOREFRONTS
 - 2.01 STOREFRONTS
 - Change note 3. To Glazing Position: "Front" as indicated on drawings.
 - 2.03 COMPONENTS
 - Change Notes 3. 4. And 5. to "See drawings for dimensions."
- E. SECTION 102113 – METAL TOILET COMPARTMENTS
 - See attached specifications.

2.01 DRAWINGS – ARCHITECTURAL

- A. Sheet A1.1 – FIRST FLOOR PLAN AND DOOR SCHEDULE
 - 1. Vestibule 100 door types change from existing doors to new doors, see attachment A.
- B. Sheet A1.1 - ENLARGED FLOOR PLAN - RESTROOM
 - 1. See attachment B for clarification on toilet accessories.

BAHR VERMEER HAECKER ARCHITECTS

440 NORTH 8TH STREET STE 100
1425 JONES STREET
bvh.com

LINCOLN NE 68508
OMAHA NE 68102

402 475 4551
402 345 3060

C. Sheet 2.1 – REFLECTED CEILING PLAN

1. Remove new ceilings in Computer Lab 114, Office 101, and a portion of Renovated Classroom 103. See attachment C

2.02 DRAWINGS - STRUCTURAL

A. Sheet S2.3 – Sanctuary Roofing Framing Plan

- a. Delete note "HSS 6x4x1/4 w 5/16" (120'-0" – VERIFY W/ ARCH) – EACH SIDE – FIELD WELD TO"

2.03 DRAWINGS – CIVIL

1. See Attached Sheets C1.0 and C1.1

2.04 DRAWINGS – MECHANICAL

1. See Attached

2.05 DRAWINGS – ELECTRICAL

1. See Attached

END OF ADDENDUM 1

SECTION 102113.13
METAL TOILET COMPARTMENTS

PART 1 GENERAL

1.01 SECTION INCLUDES

- A. Metal toilet compartments.
- B. Urinal screens.

1.02 RELATED REQUIREMENTS

- A. Section 061000 - Rough Carpentry: Blocking and supports.
- B. Section 102800 - Toilet, Bath, and Laundry Accessories.

1.03 REFERENCE STANDARDS

- A. ASTM A653/A653M - Standard Specification for Steel Sheet, Zinc-Coated (Galvanized) or Zinc-Iron Alloy-Coated (Galvannealed) by the Hot-Dip Process; 2013.
- B. ASTM A666 - Standard Specification for Annealed or Cold-Worked Austenitic Stainless Steel Sheet, Strip, Plate, and Flat Bar; 2010.
- C. 2010 ADA Standards for Accessible Design.
- D. ANSI A117.1 - American National Standard for Buildings and Facilities - Providing Accessibility and Usability for Physically Handicapped People.

1.04 ADMINISTRATIVE REQUIREMENTS

- A. Coordination: Coordinate the work with placement of support framing and anchors in walls and ceilings.
- B. FS RR-P-1352 - Partitions, Toilet, Complete; Federal Specifications and Standards; Revision C, 1989.

1.05 SUBMITTALS

- A. See Section 013000 - Administrative Requirements, for submittal procedures.
- B. Shop Drawings: Indicate partition plan, elevation views, dimensions, details of wall supports, door swings.
- C. Product Data: Provide data on panel construction, hardware, and accessories.
- D. Manufacturer's Installation Instructions: Indicate special procedures.
- E. Maintenance and Warranty Information per Section 017800.

1.06 PROJECT CONDITIONS

- A. Coordinate the work with placement of support framing and anchors in wall.

1.07 WARRANTY

- A. Provide manufacturer's standard 10 year warranty to cover all components, including finish degradation. Warranty period shall begin at date of Substantial Completion.

PART 2 PRODUCTS

2.01 MANUFACTURERS

- A. Approved Manufacturer: General Partitions Mfg. Corp-Series 40, floor supported with headrail.
 - 1. General Partitions Mfg. Corp: www.generalpartitions.com.
- B. Other Approved manufacturers:
 - 1. Accurate Partitions Corp.
 - 2. American Sanitary Partition Corporation.
 - 3. Global Steel Products Corp: www.globalpartitions.com.
 - 4. Metpar Corp: www.metpar.com.

5. Substitutions: Section 016000 - Product Requirements.

2.02 MATERIALS

- A. Steel Sheet: Hot-dipped galvanized steel sheet, ASTM A 653/A 653M coating.

2.03 COMPONENTS

- A. Toilet Compartments: Powder coated steel, floor-mounted headrail-braced.
- B. Doors, Panels, and Pilasters: Sheet steel faces, pressure bonded to sound deadening core, formed and closed edges; corners made with corner clips or mitered, welded, and ground smooth.
 1. Panel Faces: 20 gage.
 2. Door Faces: 20 gage.
 3. Pilaster Faces: 20 gage.
 4. Reinforcement: 12 gage.
 5. Internal Reinforcement: Provide in areas of attached hardware and fittings. Mark locations of reinforcement for partition mounted washroom accessories.
- C. Door and Panel Dimensions:
 1. Thickness: 1 inch.
 2. Door Width: 24 inch.
 3. Door Width for Handicapped Use: 36 inch, out-swinging.
 4. Height: 58 inch.
- D. Pilasters: 1-1/4 inch thick, of sizes required to suit compartment width and spacing.
- E. Urinal Screens: Wall mounted with continuous brackets and pilaster from floor to top of screen.

2.04 ACCESSORIES

- A. Pilaster Shoes: Formed ASTM A666, Type 304 stainless steel with No. 4 finish, 3 inch high, concealing floor fastenings.
 1. Provide adjustment for floor variations with screw jack through steel saddles integral with pilaster.
- B. Head Rails: Hollow anodized aluminum tube, 1 x 1-5/8 inch size, with anti-grip strips and cast socket wall brackets.
- C. Brackets: Satin chrome-plated non-ferrous cast metal.
- D. Attachments, Screws, and Bolts: Stainless steel, tamper proof type.
 1. For attaching panels and pilasters to brackets: Through-bolts and nuts; tamper proof.
- E. Hardware: Polished chrome plated non-ferrous cast metal:
 1. Pivot hinges, gravity type, adjustable for door close positioning; two per door.
 2. Thumb turn or sliding door latch with exterior emergency access feature.
 3. Door strike and keeper with rubber bumper; mounted on pilaster in alignment with door latch.
 4. Coat hook with rubber bumper; one per compartment, mounted on door.
 5. Provide door pull for outswinging doors.

2.05 FINISHING

- A. Powder Coated Steel Compartments: Clean, degrease, and neutralize. Follow immediately with a phosphatizing treatment, prime coat and two finish coats powder coat enamel.
- B. Color: As selected by Architect from manufacturer's full range of premium colors.

PART 3 EXECUTION

3.01 EXAMINATION

- A. Verify existing conditions before starting work.
- B. Verify that field measurements are as indicated.

- C. Verify correct spacing of and between plumbing fixtures.
- D. Verify correct location of built-in framing, anchorage, and bracing.

3.02 INSTALLATION

- A. Install partitions secure, rigid, plumb, and level in accordance with manufacturer's instructions.
- B. Maintain 3/8 to 1/2 inch space between wall and panels and between wall and end pilasters.
- C. Attach panel brackets securely to walls using anchor devices.
- D. Attach panels and pilasters to brackets. Locate head rail joints at pilaster center lines.
- E. Field touch-up of scratches or damaged enamel finish will not be permitted. Replace damaged or scratched materials with new materials.

3.03 TOLERANCES

- A. Maximum Variation From True Position: 1/4 inch.
- B. Maximum Variation From Plumb: 1/8 inch.

3.04 ADJUSTING

- A. Adjust and align hardware to uniform clearance at vertical edge of doors, not exceeding 3/16 inch.
- B. Adjust hinges to position doors in partial opening position when unlatched. Return out swinging doors to closed position.
- C. Adjust adjacent components for consistency of line or plane.

END OF SECTION

Addendum 1



1800 O Street, Ste. 104, Lincoln, Nebraska 68508 (402) 477-6161

June 16, 2014

All Saints Church and School - Final Bid Package

Alvine No. 2013 3925

Bid Date: June 19, 2014

This addendum is hereby made a part of the contract documents to the same extent as though it were originally included therein. Specifications and drawings shall be considered modified or revised as hereinafter described. Revisions to the drawings are referenced by the drawing number.

Changes to the Project Manual

Mechanical Specification Items:

1MS1. Section 23 07 13 – Duct Insulation

1. Page 23 07 13-7, Article 3.04.B.1.a., revise the following:
 - A. Change the mineral fiber blanket insulation thickness from 2" to 1 1/2".
2. Page 23 07 13-7, Article 3.04.B.2.a., revise the following:
 - A. Change the mineral fiber blanket insulation thickness from 2" to 1 1/2".

1MS2. Section 23 31 00 – HVAC Ducts and Casings

1. Page 23 31 00-5, Article 2.06.A.3., add the following:

"p. Spiral Pipe of Texas."

1MS3. Section 23 34 23 – HVAC Power Ventilators

1. Page 23 34 23-2, Article 2.01, add the following:

"H. ACME."

1MS4. Section 23 37 00 – Air Outlets and Inlets

1. Page 23 37 00-2, Article 2.01, add the following:

"H. Performance Air Products."

Changes to Drawings

Mechanical Drawing Items:

1MD1. Sheet M0.2 – First Floor Plan – HVAC Demolition

1. Revise the length of supply air ductwork demolition in the existing church office/ new Computer Lab 114 as indicated on the attached Mechanical Sketch Sheet MS-1.
2. Retain and reuse the existing supply air registers in place, in the existing north classroom/ new Office 101 as indicated on the attached Mechanical Sketch Sheet MS-1.

1MD2. Sheet M2.1 – First Floor Plan – HVAC

1. Revise the supply air ductwork and the refrigerant piping in Renovated Classroom 103 to allow for an exposed structure in the east part of this classroom as indicated on the attached Mechanical Sketch Sheet MS-2.
2. Relocate the Intake air Hood IH-1 to be at least 10'-0" away from the Furnace FUR-1 flue roof discharge location, per revised Flag Note No. 5, as indicated on the attached Mechanical Sketch Sheet MS-2.
3. Remove the new supply air ductwork, reuse the existing supply air sidewall registers, and revise the transfer air duct in Office 101 to allow for an exposed structure as indicated on the attached Mechanical Sketch Sheet MS-2.
4. Remove the new supply air branch ductwork and provide new sidewall registers in Computer Lab 114 to allow for an exposed structure as indicated on the attached Mechanical Sketch Sheet MS-3.
5. Revise Flag Note No. 33 to read as follows:

"Balance existing RTU-1 supply air to 6,000 cfm and the minimum outdoor air to 1,100 cfm."
6. Revise Flag Note No. 35 to read as follows:

"Provide existing RTU-1 with differential enthalpy economizer controls, motorized control dampers, and demand controlled ventilation controls to reduce the outdoor air below the minimum airflow during low occupancy periods. Mechanical Contractor to connect to new wall mounted CO2 sensor in the sanctuary with wiring routed through the below floor steam tunnel space."

1MD3. Sheet M3.1 – Mechanical Details

1. Revise Detail 5/M3.1 – Fan Coil Unit Detail – FCU-1 as follows:
 - A. Remove the second condensate trap and drain from the FCU-1 casing.
2. Revised Detail 13/M3.1 – Gas Water Heater with Circulation Pump as follows:
 - A. Revise the location of the HWCP-1 strainer as indicated on the attached Mechanical Sketch Sheet MS-4.

Electrical Drawing Items:

1ED1. Sheet E0.1 – First Floor Plan Electrical Demolition

1. Revise the lighting demolition for the existing church office as indicated on the attached Electrical Sketch Sheet ES-1.

1ED2. Sheet E1.1 – First Floor Plan – Lighting

1. Revise the lighting for Office 101 and Renovated Classroom 103 as indicated on the attached Electrical Sketch Sheet ES-2.
2. Revise the lighting for Computer Lab 114 as indicated on the attached Electrical Sketch Sheet ES-3.

1ED3. Sheet E2.1 – First Floor Plan – Power

1. Revise the power for Office 101 as indicated on the attached Electrical Sketch Sheet ES-4.

1ED4. Sheet E3.1 – First Floor Plan – Special Systems

1. Revise the communication conduits for Office 101 and for Renovated Classroom 103 as indicated on the attached Electrical Sketch Sheets ES-5 and ES-6.

1ED5. Sheet E4.1 – Electrical Riser Diagram and Schedules

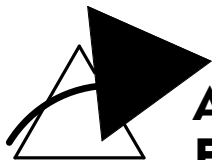
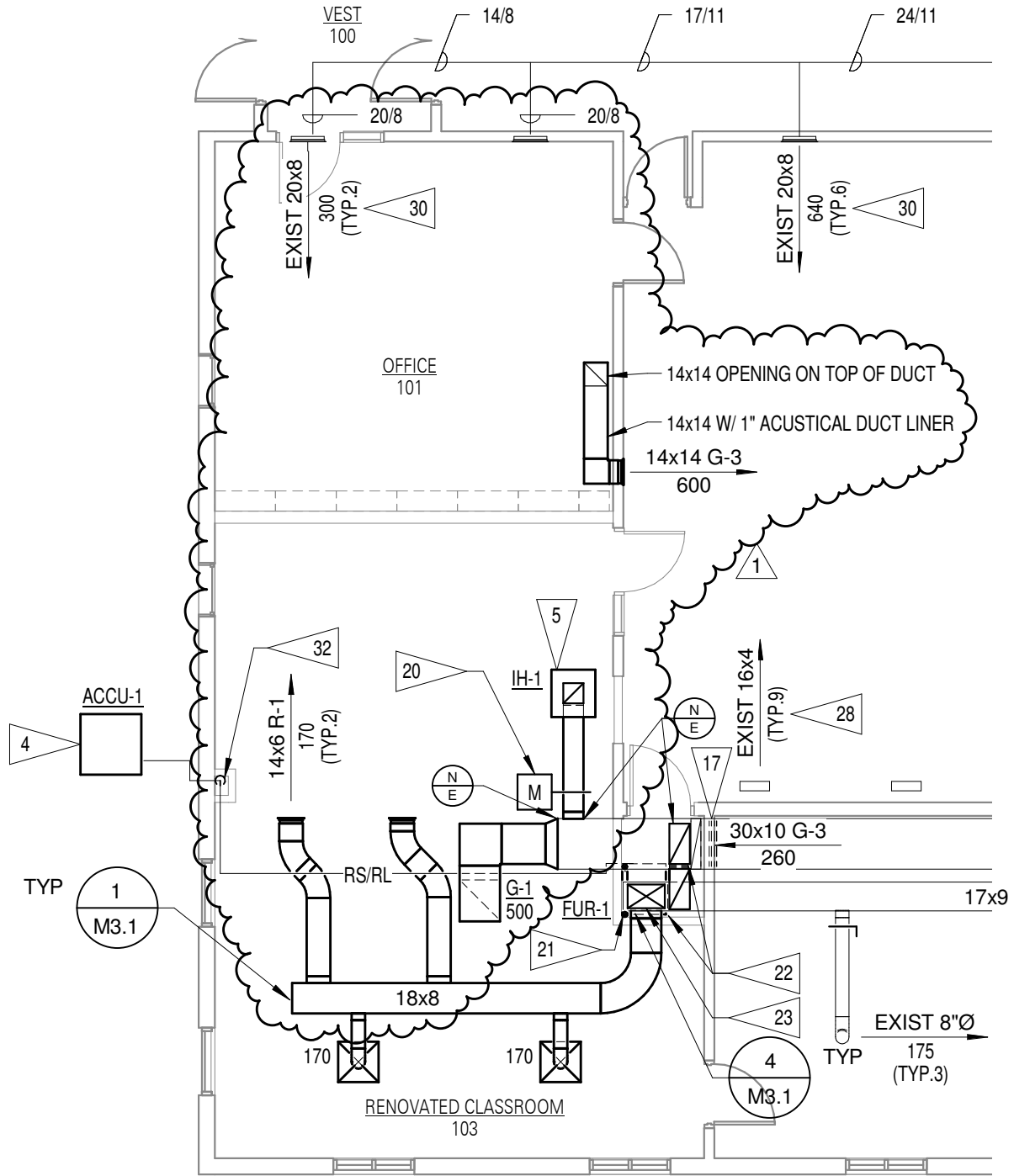
1. Revise the panel information as indicated on the attached Electrical Sketch Sheet ES-7.

1ED6. Sheet E5.1 – Electrical Details and Schedules

1. Add additional light fixtures to the Luminaire Schedule as indicated on the attached Electrical Sketch Sheet ES-8.

END

1 5 OA INTAKE HOOD MOUNTED ON ROOF. LOCATE HOOD AT LEAST 10'-0" CLEAR OF FURNACE FLUE LOCATION.



**Alvine
Engineering**

ALL SAINTS CHURCH

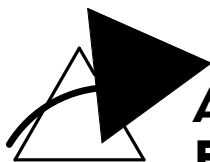
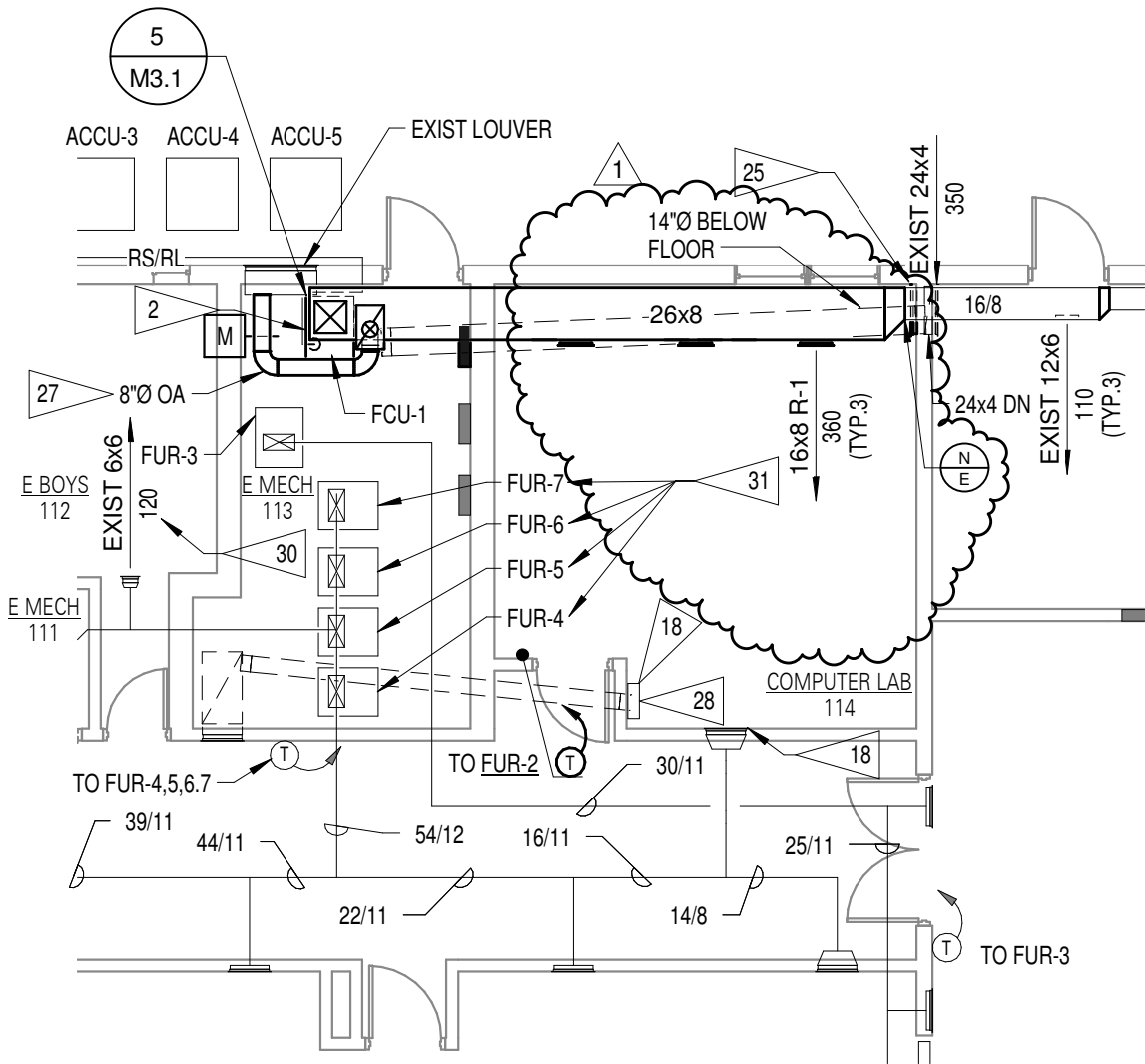
PROJECT NO.
20133925

DATE
06/16/2014

DRAWING REFERENCED:
ADDENDUM NO.:

M2.1
1

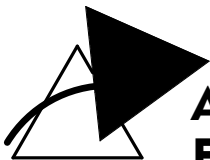
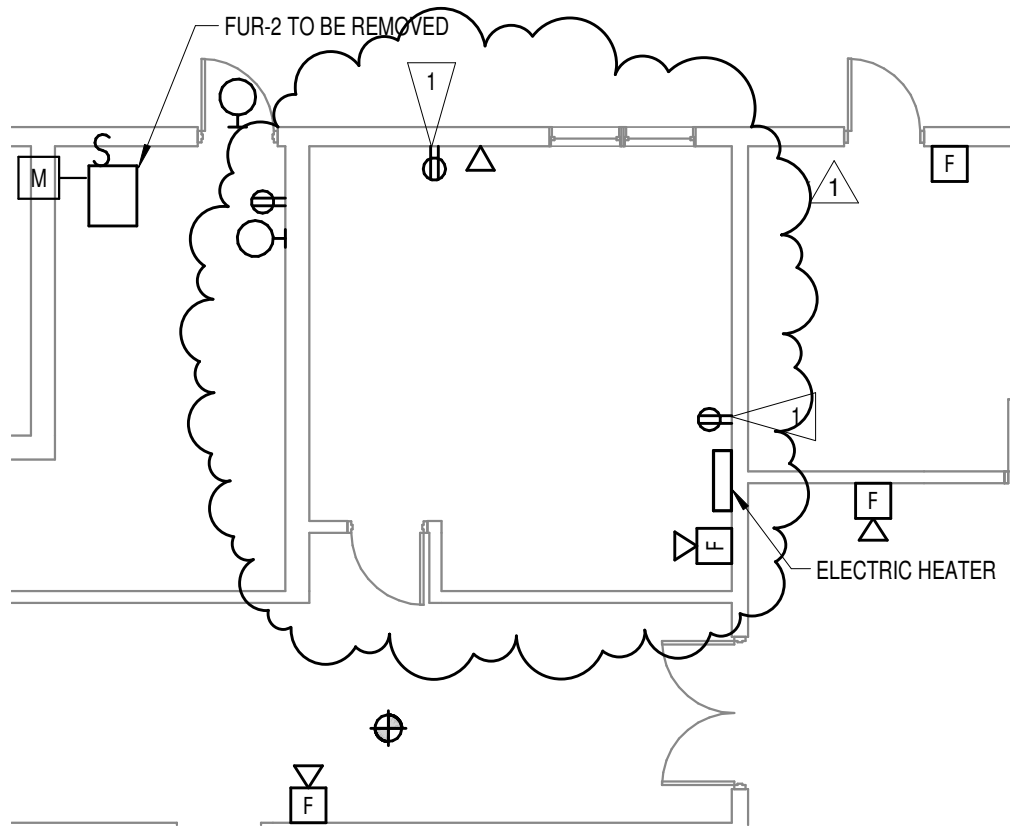
SKETCH
MS-2



**Alvine
Engineering**

ALL SAINTS CHURCH

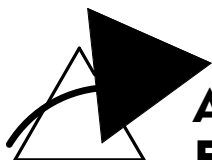
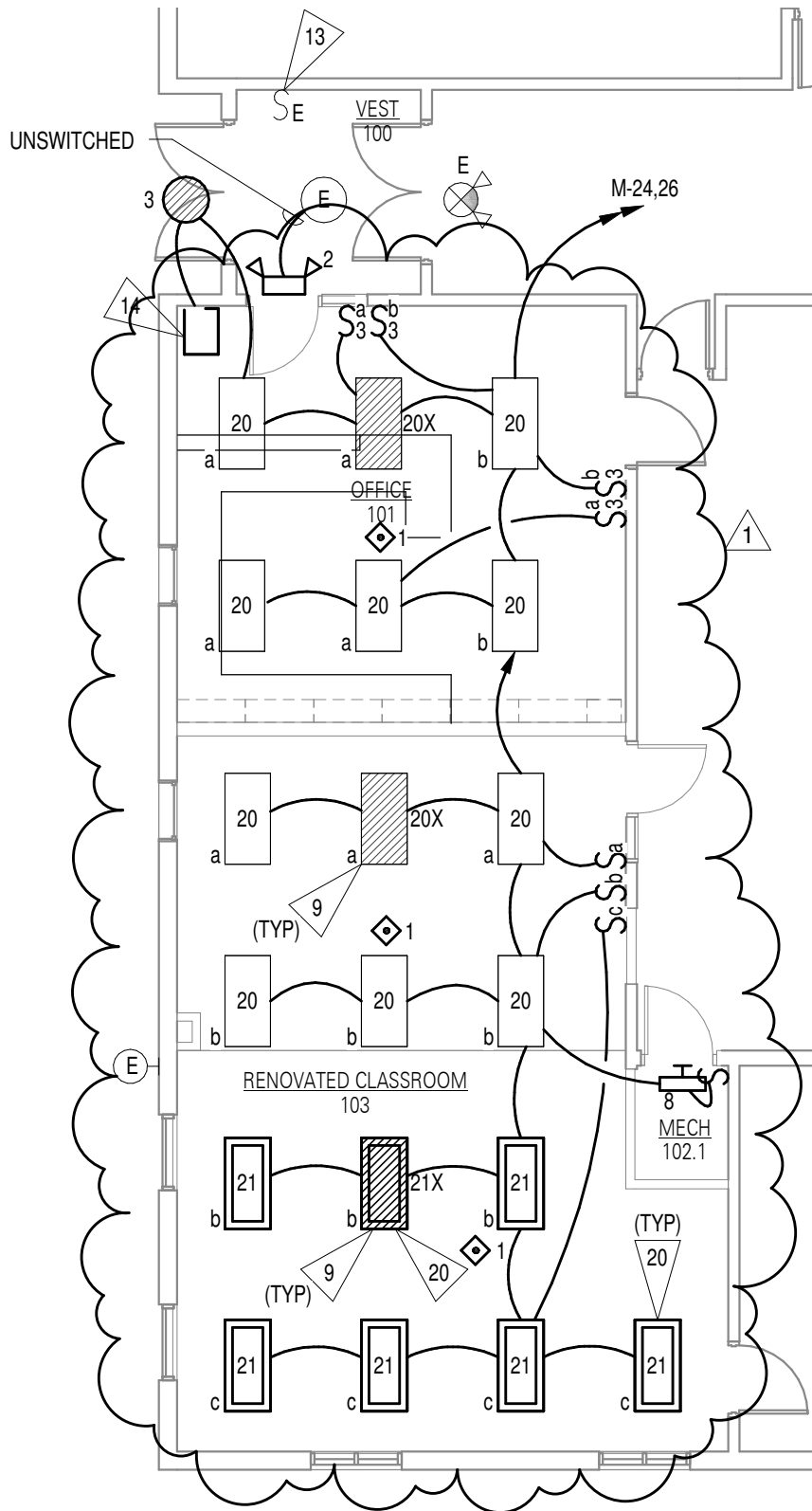
| | | | | |
|-------------|------------|---------------------|------|----------------|
| PROJECT NO. | DATE | DRAWING REFERENCED: | M2.1 | SKETCH MS-3 |
| 20133925 | 06/16/2014 | ADDENDUM NO.: | 1 | |



**Alvine
Engineering**

ALL SAINTS CHURCH

| | | | | |
|-------------|------------|---------------------|------|----------------|
| PROJECT NO. | DATE | DRAWING REFERENCED: | E0.1 | SKETCH ES-1 |
| 20133925 | 06/16/2014 | ADDENDUM NO.: | 1 | |



**Alvine
Engineering**

ALL SAINTS CHURCH

| | | | | |
|-------------|------------|---------------------|------|----------------|
| PROJECT NO. | DATE | DRAWING REFERENCED: | E1.1 | SKETCH ES-2 |
| 20133925 | 06/16/2014 | ADDENDUM NO.: | 1 | |

FLAG NOTES

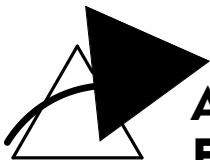
6 PROVIDE A 8" W X 2" D CABLE MANAGEMENT TRAY WITH COVERED BOTTOM.

7 PROVIDE A SINGLE GANG BOX WITH 1" C. TO COMMUNICATION CABINET.
PROVIDE BLANK COVERPLATE.

14 PROVIDE A FLUSH IN WALL COMMUNICATION CABINET 24" H X 14" W X 6" D.
LEVITON CAT. NO.: 47602-24E WITH MOUNTING BRACKET CAT. NO.: 47602-BKE.

15 ROUTE COMMUNICATION CONDUIT TO COMMUNICATION CABINET.

1



**Alvine
Engineering**

ALL SAINTS CHURCH

| | | | | |
|-------------|------------|---------------------|------|----------------|
| PROJECT NO. | DATE | DRAWING REFERENCED: | E3.1 | SKETCH ES-6 |
| 20133925 | 06/16/2014 | ADDENDUM NO.: | 1 | |

PANEL H

SURFACE MOUNTED

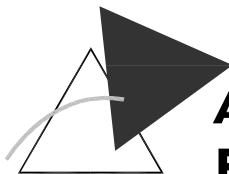
PANEL MANUFACTURER SHALL BE GE

1

SOURCE

MDP

| REMARKS | O/C | CKT # | PH | CKT # | O/C | REMARKS | LOAD VA | DESCRIPTION |
|---------|------|-------|----|-------|------|---------|---------|--------------------|
| | 20/1 | 1 | A | 2 | 20/1 | GFCI | 600 | ELEC. WATER COOLER |
| | 20/1 | 3 | B | 4 | 20/1 | | 50 | SMOKE DETECTORS |
| | 20/1 | 5 | C | 6 | 20/1 | | 1500 | EH-3 |
| | 20/1 | 7 | A | 8 | 20/1 | | | SPARE |
| | 20/1 | 9 | B | 10 | 20/1 | | | SPARE |
| | 20/1 | 11 | C | 12 | 20/1 | | | SPARE |
| | 20/1 | 13 | A | 14 | 20/1 | | | SPARE |
| | 20/1 | 15 | B | 16 | 20/1 | | | SPARE |
| | 20/2 | 17 | C | 18 | 30/2 | | | SPARE |
| | * | 19 | A | 20 | * | | - | - |
| | | 21 | B | 22 | 15/2 | | 2000 | ELEC. HEATER EH-4 |
| | | 23 | C | 24 | * | | - | - |
| | | 25 | A | 26 | | | | |
| | | 27 | B | 28 | | | | |
| | | 29 | C | 30 | | | | |
| | | 31 | A | 32 | | | | |
| | | 33 | B | 34 | | | | |
| | | 35 | C | 36 | | | | |
| | | 37 | A | 38 | | | | |
| | | 39 | B | 40 | | | | |
| | | 41 | C | 42 | | | | |



**Alvine
Engineering**

ALL SAINTS CHURCH

PROJECT NO.
20133925

DATE
06/19/2014

DRAWING REFERENCED: E4.1
ADDENDUM NO.: 1

SKETCH
ES-7

LUMINAIRE SCHEDULE

| LUMI. NO. | MANUFACTURER | CATALOG NO. | LAMP DATA | VOLTAGE | DESCRIPTION | MOUNTING | ALTERNATE MANUFACTURERS | REMARKS |
|------------|--------------|--------------------------------|---------------------|---------|---|------------------|-------------------------|---------|
| 1 | LITHONIA | CJ 32 120 | 3-32 18 350K | 120 | 4 FOOT 2 LAMP STRIP LIGHT | PENDANT, CEILING | COOPER, HUBBELL | 1 |
| 2 | LITHONIA | EJ2 LED M12 | INCLUDED W/ FIXTURE | 120 | LED EMERGENCY LIGHT WITH BATTERY PACK | WALL | COOPER, HUBBELL | |
| 3 | LITHONIA | VGM42LED12008-BPEFL1 | INCLUDED W/ FIXTURE | 120 | LED WANDAL RESISTANT SURFACE MOUNTED LIGHT | SURFACE SOFFIT | COOPER, HUBBELL | 2 |
| 4/4X/4X NL | GOHMAM | ECSR 3614 6 W/ 120 | INCLUDED W/ FIXTURE | 120 | Ø RECESSED LED DOWNLIGHT | RECESSED CEILING | COOPER, HUBBELL | |
| 5 | LITHONIA | TL433L PMA 2008J 0985 | INCLUDED W/ FIXTURE | 120 | 1" X 4" RECESSED LED TROFFER, FLANGE MOUNT | RECESSED CEILING | COOPER, HUBBELL | |
| 6/6X | LITHONIA | 25TL 4 48L LP935 180 | INCLUDED W/ FIXTURE | 120 | 2" X 4" RECESSED LED TROFFER, A12 LENS, 1/29" THICK | RECESSED CEILING | COOPER, HUBBELL | |
| 7 | LITHONIA | RE44RCOMANESL150L3K 956CL 220X | INCLUDED W/ FIXTURE | 120 | LED EXTENSION DOWNLIGHT | SOFFIT | COOPER, HUBBELL | 5 |
| 8 | LITHONIA | LMS 17120 | 1-17 18 5K | 120 | 2" FLUORESCENT STRIP | WALL | COOPER, HUBBELL | 1 |
| 9 | LUMEN PULSE | LBL120QNMVKNVO | INCLUDED W/ FIXTURE | 120 | EXTENSION FLOOD LIGHT | GROUND | COOPER, HUBBELL | 4 |
| 10 | LITHONIA | LOCWHELN | INCLUDED W/ FIXTURE | 120 | LED SINGLE FACE EXIT LIGHT | SURFACE CEILING | COOPER, HUBBELL | |
| 11 | - | - | - | 120 | FLUORESCENT COVE LIGHT | COVE | - | 3 |
| 12 | - | - | - | 120 | PENDANT | CEILING | - | 3 |
| 13 | - | - | - | 120 | PENDANT | CEILING | - | 3 |
| 14 | - | - | - | 120 | WALL SCONCE | WALL | - | 3 |
| 15 | - | - | - | 120 | WALL WASHER | CEILING | - | 3 |
| 16 | LITHONIA | LHM/SVGR | INCLUDED W/ FIXTURE | 120 | LED EMERGENCY LIGHT WITH BATTERY PACK | CEILING | COOPER, HUBBELL | |
| 17 | THOMAS | SL87B2-18 | 2-13W CFL | 120 | DRUM LIGHT | CEILING | COOPER, HUBBELL | |
| 18 | LITHONIA | WVHLED100N0030K 38120PEBLYD | INCLUDED W/ FIXTURE | 120 | LED WALL PACK | WALL | COOPER, HUBBELL | 2 |
| 19 | LITHONIA | WL 4 25L 024L P838 180 | INCLUDED W/ FIXTURE | 120 | 2" SURFACE MOUNTED LED WALL BACKEIGHT LIGHT | WALL | COOPER, HUBBELL | 6 |
| 20/20X | LITHONIA | 2M 3 32 A1725 MNOCT 13 68B105 | 3-32 18 350K | 120 | 2" X 4" SURFACE FLUORESCENT TROFFER, A12 LENS, 1/29" THICK | SURFACE CEILING | COOPER, HUBBELL | |
| 21/21X | LITHONIA | 25T8 3 32 A12125 120 18 68B105 | 3-32 18 350K | 120 | 2" X 4" RECESSED FLUORESCENT TROFFER, A12 LENS, 1/29" THICK | RECESSED CEILING | COOPER, HUBBELL | |

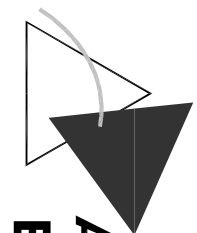
A

GENERAL NOTES

- a. SEE SPECIFICATIONS FOR ADDITIONAL REQUIREMENTS FOR LUMINAIRES, LAMPS, AND BALLASTS.
- b. CONTRACTOR TO VERIFY LUMINAIRE CATALOG NUMBER AND INSTALLATION REQUIREMENTS PRIOR TO ORDERING. FOR EACH LUMINAIRE UTILIZING DOUBLE-ENDED FLUORESCENT LAMPS, PROVIDE INTEGRAL LUMINAIRE DISCONNECT. SEE SPECIFICATIONS.
- c. LUMINAIRE NUMBERS INDICATED WITH A LETTER INDICATE THE FOLLOWING:
 - NL - CONNECT TO UNSWITCHED POWER
 - X - EMERGENCY BATTERY PACK
- d. LISTED ALTERNATE MANUFACTURERS ARE PERMITTED TO BID AN EQUIVALENT LUMINAIRE WHICH COMPLEES WITH THE PRODUCT REQUIREMENTS IDENTIFIED IN THIS SCHEDULE AND THE SPECIFICATIONS.

© COPYRIGHT 2014
 Permission to reproduce all or part of this Drawing is hereby granted solely for the limited purpose of construction of this project or archiving. Unauthorized copying, disclosure or construction use without written permission of Alvine Engineering is prohibited.

ALL SAINTS CHURCH



Alvine Engineering

PROJECT NO.
20133925

DATE
06/16/2014

DRAWING REFERENCED:
ADDENDUM NO.:

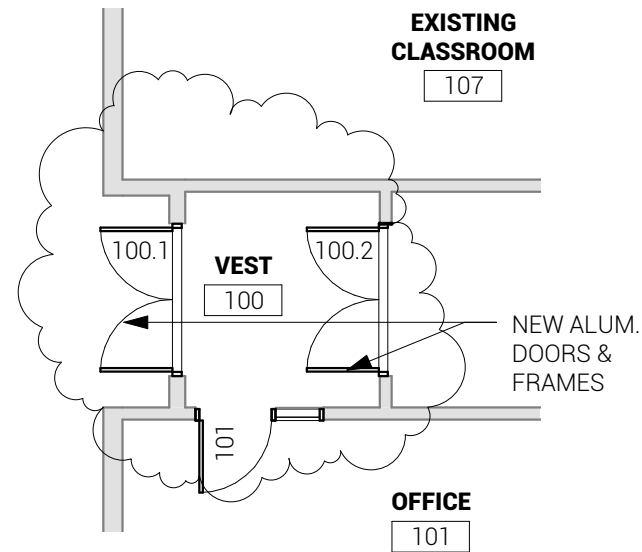
ES-1
1

SKETCH
ES-8

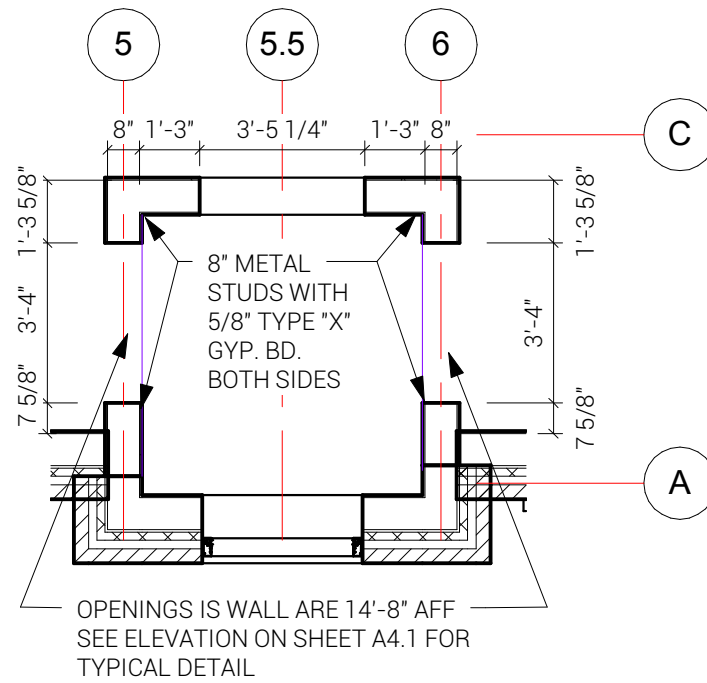


**ALL SAINTS CHURCH AND SCHOOL
ADD 1 FINAL BID PKG ATTACH. A**

DATE: 06/16/14



2 FIRST FLOOR PLAN
1/8" = 1'-0"



1 BELL TOWER FRAMING
1/4" = 1'-0"

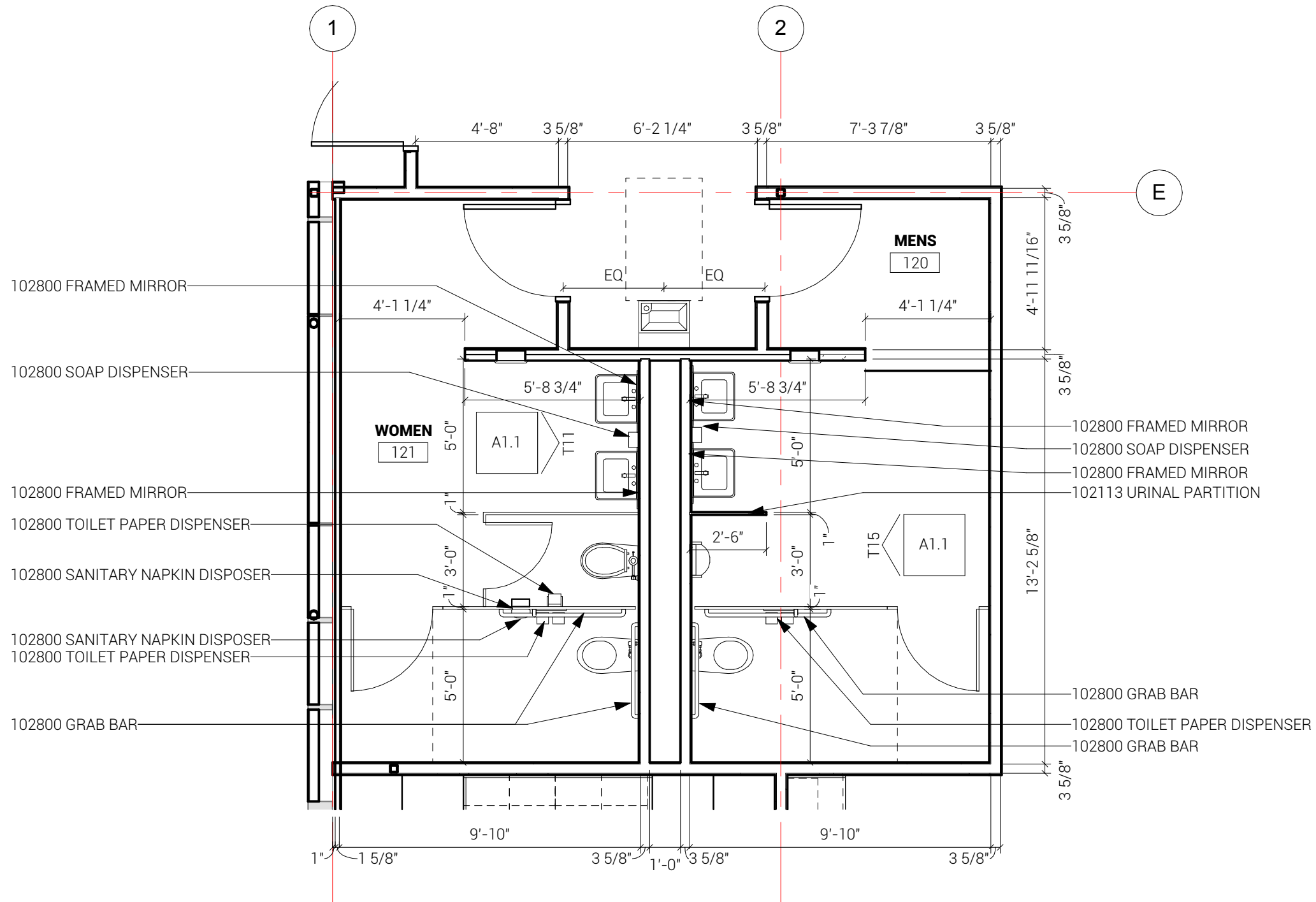
ADD 2 DOOR SCHEDULE

| NUMBER | DOOR | | | | FRAME | | FIRE RATING | HDWE SET | GLASS TYPE | COMMENTS |
|--------|-------|-------|--------|------|------------|------|-------------|----------|------------|----------|
| | LEAFS | WIDTH | HEIGHT | TYPE | JAMB DEPTH | TYPE | | | | |
| 100.1 | 2 | 3'-0" | 7'-0" | A-2 | | A1 | | 10 | | |
| 100.2 | 2 | 3'-0" | 7'-0" | A-2 | | A1 | | 2 | | |
| 101 | 1 | 3'-0" | 7'-0" | W-4 | 5 3/4" | HM-2 | - | 3 | 1/4" TEMP | |
| 102.1 | 1 | 3'-0" | 7'-0" | W-1 | 5 3/4" | HM-1 | - | 5 | | |
| 103 | 1 | 3'-0" | 7'-0" | W-4 | 5 3/4" | HM-2 | - | 4 | 1/4" TEMP | |
| 116.1 | 2 | 3'-0" | 7'-0" | A-2 | | A1 | | 6 | | |
| 116.2 | 2 | 3'-0" | 7'-0" | W-4 | 5 3/4" | HM-1 | | 7 | 1/4" TEMP | |
| 118.1 | 1 | 3'-0" | 7'-0" | W-1 | 5 3/4" | HM-1 | - | 9 | | |
| 118.2 | 1 | 3'-0" | 7'-0" | W-1 | 5 3/4" | HM-1 | - | 8 | | |
| 119.1 | 2 | 3'-0" | 7'-0" | A-2 | | A1 | | 10 | | |
| 119.2 | 1 | 3'-0" | 7'-0" | W-2 | 5 3/4" | HM-1 | | 11 | 1/4" TEMP | |
| 120 | 1 | 3'-0" | 7'-0" | W-1 | 5 3/4" | HM-1 | - | 12 | | |
| 121 | 1 | 3'-0" | 7'-0" | W-1 | 5 3/4" | HM-1 | - | 12 | | |
| 127.1 | 1 | 3'-0" | 7'-0" | W-1 | 5 3/4" | HM-1 | - | 13 | | |
| 139 | 2 | 4'-0" | 7'-0" | W-3 | 5 3/4" | HM-1 | | 14 | 1/4" TEMP | |



**ALL SAINTS CHURCH AND SCHOOL
ADD 1 FINAL BID PKG ATTACH. B**

DATE: 06/16/14



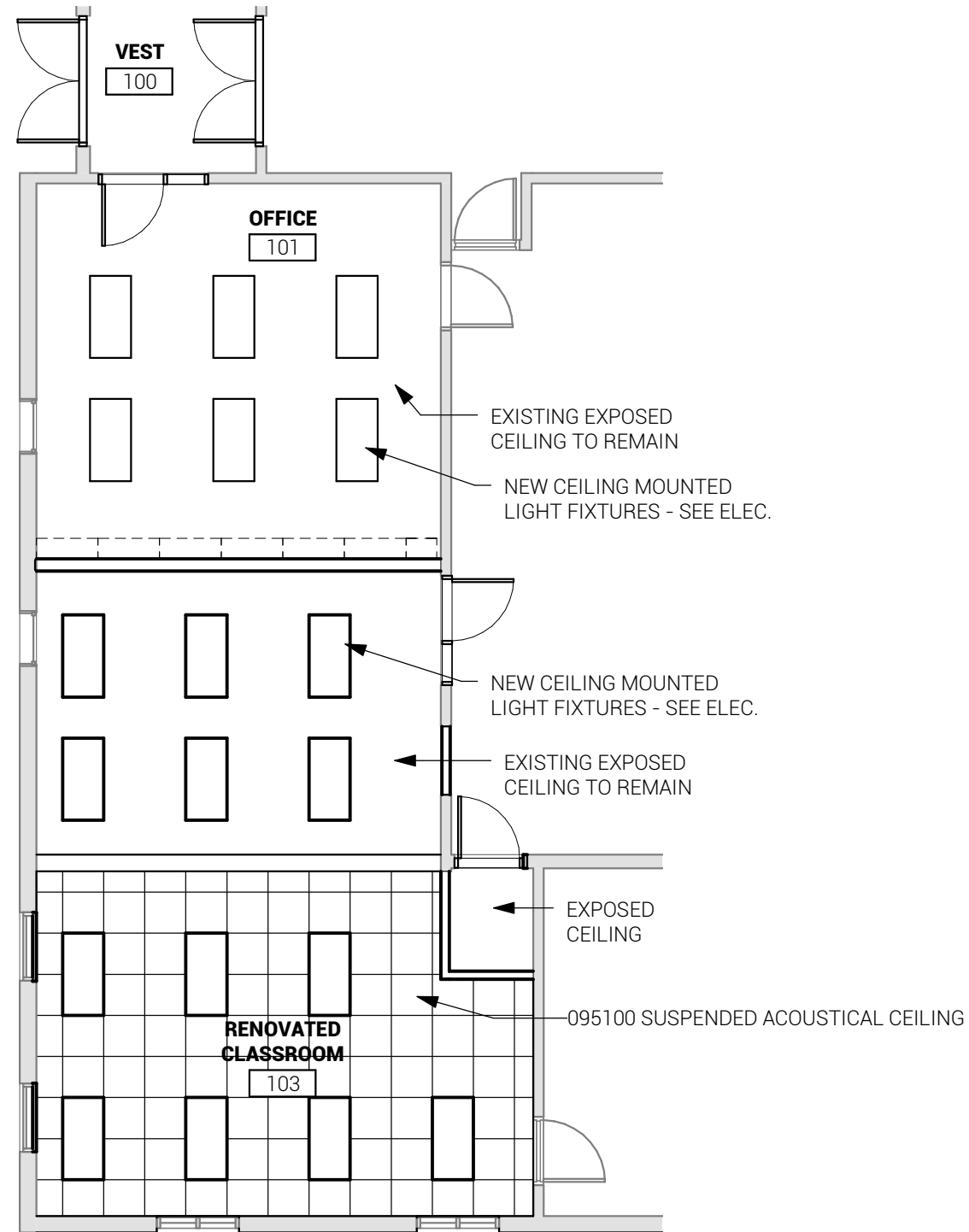
1 ADD 2 ENLARGE FLOOR PLAN - RESTROOMS

1/4" = 1'-0"

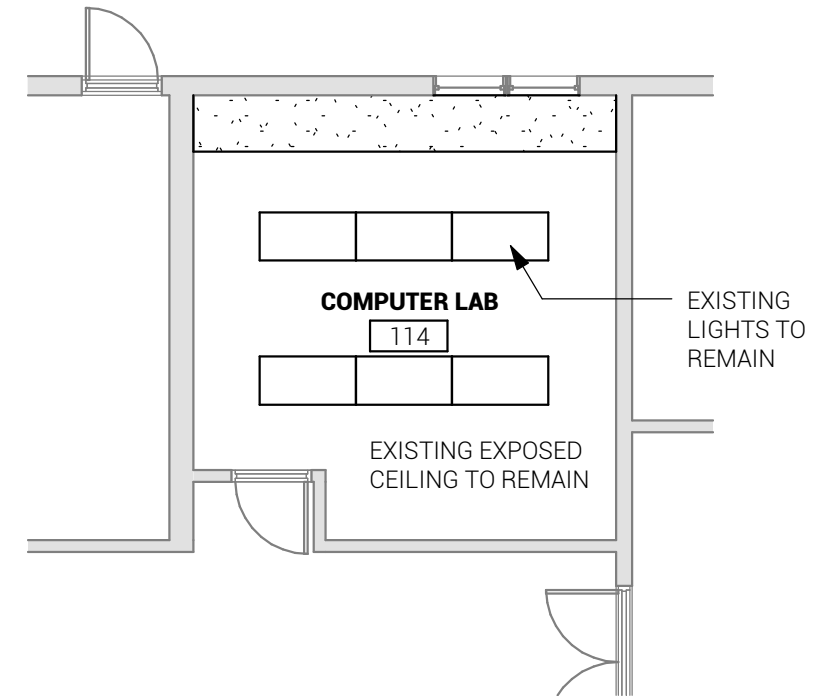


**ALL SAINTS CHURCH AND SCHOOL
ADD 1 FINAL BID PKG ATTACH. C**

DATE: 06/16/14



1 FIRST FLOOR REFLECTED CEILING PLAN
1/8" = 1'-0"



2 FIRST FLOOR REFLECTED CEILING PLAN
1/8" = 1'-0"

GENERAL NOTES:

1. THE LOCATION OF ALL AERIAL AND UNDERGROUND UTILITY FACILITIES MAY NOT BE INDICATED ON THESE PLANS. UNDERGROUND UTILITIES, WHETHER INDICATED OR NOT WILL BE LOCATED AND FLAGGED BY THE UTILITIES AT THE REQUEST OF THE CONTRACTOR. NO EXCAVATION WILL BE PERMITTED IN THE AREA OF UNDERGROUND UTILITY FACILITIES UNTIL ALL SUCH FACILITIES HAVE BEEN LOCATED AND IDENTIFIED TO THE SATISFACTION OF ALL PARTIES. THE EXCAVATION MUST BE ACCOMPLISHED WITH EXTREME CARE IN ORDER TO AVOID ANY POSSIBILITY OF DAMAGE TO THE UTILITY FACILITY. THE CONTRACTOR SHALL BE RESPONSIBLE FOR ALL DAMAGES.
2. CONTRACTOR SHALL USE EXTREME CAUTION IN THE ARE OF ALL EXISTING UTILITIES AND SHALL BE RESPONSIBLE FOR ANY DAMAGES. CONTRACTOR SHALL NOTIFY ENGINEER IMMEDIATELY OF ANY DAMAGE TO EXISTING UTILITIES.
3. THE CONTRACTOR SHALL PRESERVE ALL PROPERTY CORNERS MONUMENTS. PROPERTY CORNERS DISTURBED DURING CONSTRUCTION SHALL BE RESET BY A REGISTERED SURVEYOR AT THE CONTRACTOR'S EXPENSE.
4. THE CONTRACTOR SHALL OBTAIN AND PAY THE COST OF ALL REQUIRED PERMITS AND FEES.
5. EROSION CONTROL MEASURES SHALL BE THE RESPONSIBILITY OF THE CONTRACTOR.
6. CONTRACTOR TO PROVIDE ALL INCIDENTAL FITTINGS NECESSARY TO COMPLETE WORK.
7. CONSTRUCTION SHALL COMPLY WITH ALL APPLICABLE GOVERNING CODES AND BE CONSTRUCTED TO SAME.
8. THE CONTRACTOR SHALL PRESERVE ALL PROPERTY CORNERS MONUMENTS. PROPERTY CORNERS DISTURBED DURING CONSTRUCTION SHALL BE RESET BY A REGISTERED LAND SURVEYOR AT THE CONTRACTOR'S EXPENSE.
9. THE CONTRACTOR SHALL PRESERVE ALL SURVEY CONTROL.
10. ALL SURFACES THAT ARE DISTURBED DURING CONSTRUCTION SHALL BE RESTORED TO PRE-CONSTRUCTION CONDITION. THIS WORK SHALL BE CONSIDERED INCIDENTAL AND NO MEASUREMENT OR PAYMENT SHALL BE MADE.
11. CONTRACTOR SHALL BE RESPONSIBLE FOR TRAFFIC CONTROL, CONTRACTOR SHALL DEVELOP A TRAFFIC CONTROL PLAN IN ACCORDANCE WITH THE MOST CURRENT EDITION OF THE MANUAL UNIFORM TRAFFIC CONTROL DEVICES (MUTCD).
12. THE CONTRACTOR SHALL REMOVE ALL SIGNS THAT ARE IN CONFLICT WITH THE CONSTRUCTION, REMOVED SIGNS SHALL BE DELIVERED TO THE OWNER FOR STORAGE DURING THE DURATION OF THE CONSTRUCTION. ALL SIGNS SHALL BE REINSTALLED UPON COMPLETION OF OTHER WORK AS DIRECTED BY THE CITY. SIGN REMOVAL, STORAGE, AND REINSTALLATION SHALL BE CONSIDERED SUBSIDIARY.

WATER NOTES:

1. ALL WORK SHALL BE IN ACCORDANCE WITH AWWA C605 UNDERGROUND INSTALLATION OF PVC PRESSURE PIPE AND FITTINGS (MOST RECENT VERSION) AND CITY OF HOLDREGE STANDARD SPECIFICATIONS.
2. PIPE SHALL BE PVC 1120 DR 18, CLASS 150 WITH O.D. CONFORMING TO THAT OF CAST IRON PIPE. PIPE SHALL CONFORM WITH AWWA C900 SPECIFICATION, MOST RECENT VERSION. RUBBER COMPRESSION RING JOINTS SHALL CONFORM TO ASTM F477, MOST RECENT VERSION.
3. DUCTILE IRON MECHANICAL JOINT FITTINGS SHALL CONFORM TO AWWA C110, MOST RECENT VERSION. CONTRACTOR SHALL PROVIDE THRUST RESTRAINTS AND POURED CONCRETE THRUST BLOCKS AS DETAILED.
4. GATE VALVE SHALL CONFORM TO AWWA C509 OR C600, MOST RECENT VERSION. GATE VALVE SHALL BE MUELLER, KENNEDY OR EQUAL WITH CAST IRON BODY, RESILIENT SEAT, AND BRONZE STEM.
5. CONTRACTOR TO PROVIDE ALL INCIDENTAL FITTINGS AS NECESSARY TO COMPLETE THE WORK.
6. CONTRACTOR SHALL BE RESPONSIBLE FOR ALL REQUIRED TESTING AND SHALL BE RESPONSIBLE FOR THE COSTS OF ALL TESTS.
7. TRENCH EXCAVATION AND BACKFILL SHALL BE COMPACTED IN 12" LIFTS AND COMPACTED TO 98% OF THE STANDARD PROCTOR MAXIMUM DRY DENSITY, ±3% OPTIMUM MOISTURE.
8. CONTRACTOR SHALL DISINFECT THE MAIN IN ACCORDANCE WITH AWWA C651, MOST RECENT VERSION. CONTRACTOR SHALL TAKE AND SUBMIT WATER SAMPLES TAKEN AT 24 HOUR INTERVALS AND PROVIDE BACTERIOLOGICAL TEST RESULTS TO THE CITY AND THE ENGINEER. TWO CONSECUTIVE ZEROS ARE REQUIRED.
9. CONTRACTOR SHALL HYDROSTATICALLY PRESSURE TEST THE MAIN IN ACCORDANCE WITH AWWA C600, MOST RECENT VERSION. CONTRACTOR SHALL FILL THE MAIN WITH WATER TO 120 PSI FOR A MINIMUM OF 2 HOURS. CONTRACTOR SHALL REPAIR ANY LEAKS AND REPEAT THE TEST UNTIL NO LOSS IN PRESSURE IS OBSERVED.
10. PROPOSED WATER MAIN SHALL MAINTAIN AT LEAST 18" VERTICAL SEPARATION AT ALL SANITARY SEWER AND STORM SEWER CROSSINGS. WATER MAIN SHALL MAINTAIN AT LEAST 10FT HORIZONTAL SEPARATION FROM ALL EXISTING OR PROPOSED SANITARY SEWER OR STORM SEWER.

PAVING NOTES:

1. CONCRETE PAVEMENT (EXCEPT WALKS) SHALL BE NEBRASKA DEPARTMENT OF ROADS 47B WITH A COMPRESSIVE STRENGTH OF 3,500 PSI AT 28 DAYS.
2. CONCRETE PAVEMENT FOR WALKS SHALL BE NEBRASKA DEPARTMENT OF ROADS BX-3000 WITH A COMPRESSIVE STRENGTH OF 3,000 PSI AT 28 DAYS.
3. CONTRACTOR SHALL MATCH THE EXISTING JOINT PATTERN OR SHALL SUBMIT A PLAN TO ENGINEER AND ARCHITECT FOR APPROVAL.
4. SLABS SHALL BE NO LARGER THAN 12'x12' ON 6"-8" PAVEMENT OR 6'x6' ON 4" SIDEWALK PAVEMENT.
5. DURING CONSTRUCTION, CONTRACTOR SHALL BE RESPONSIBLE FOR ALL CONCRETE TESTING AND SHALL TAKE FOUR CONCRETE TEST CYLINDERS, ONE AIR ENTRAINMENT TEST AND ONE SLUMP CONE TEST FOR EVERY 100 CUBIC YARDS OR LESS OF EACH CLASS OF CONCRETE PLACED FOR EACH DAY.
6. ALL NEW TO EXISTING CONCRETE PAVEMENT JOINTS SHALL HAVE EXPANSION JOINTS WITH SEALANT.
7. CONSTRUCTION OF CURB RAMPS AND WARNING PLATES SHALL BE CONSIDERED SUBSIDIARY.

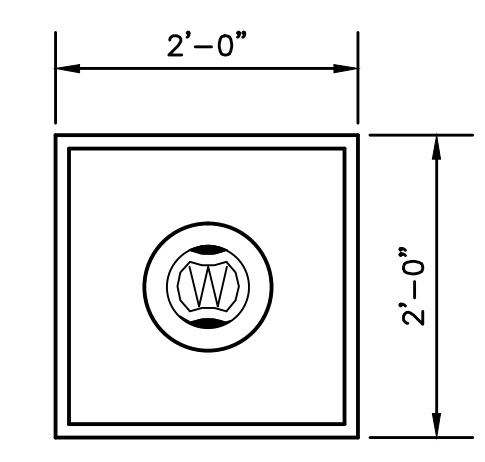


ARCHITECT
BAHR VERMEER HAECKER ARCHITECTS
440 N 8TH ST STE 100
LINCOLN, NE 68508
V 402.475.4551
F 402.475.0208
bvh.com

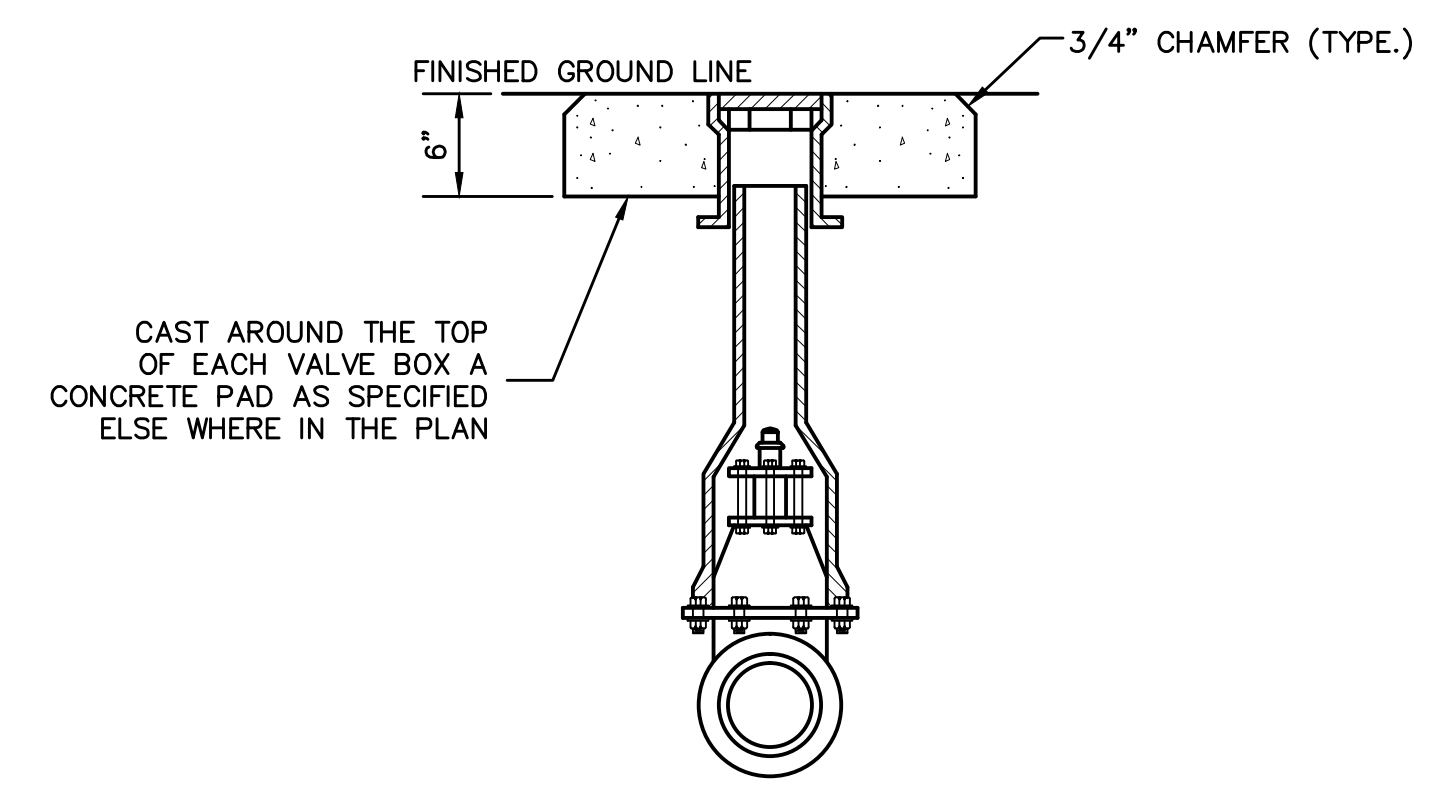
CIVIL ENGINEER
MOLSSON ASSOCIATES
701 4th Avenue, Suite 2C
Holdrege, NE 68949
V 308.995.8706
F 308.995.8921

STRUCTURAL ENGINEER
STRUCTURAL DESIGN GROUP
105 N. 8TH STREET - SUITE 100
LINCOLN, NE 68508
V 402.438.7788
F 402.438.7790

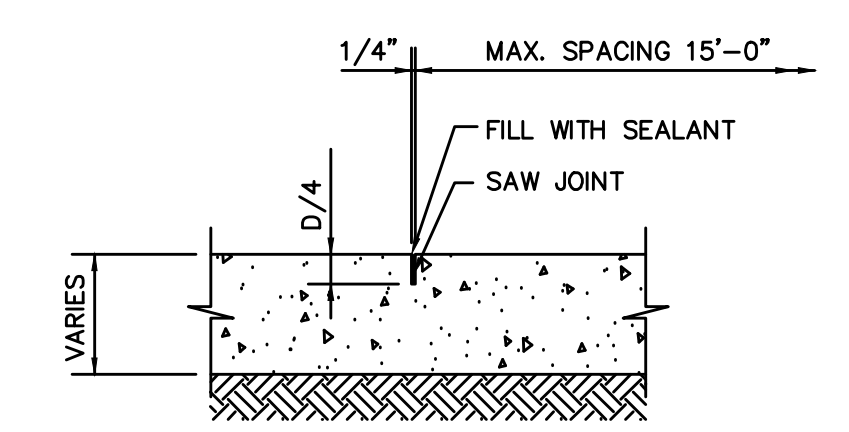
MECHANICAL ELECTRICAL ENGINEERS
ALVINE ENGINEERING
1800 O St - SUITE 104
LINCOLN, NE 68508
V 402.477.6161
F 402.477.9616



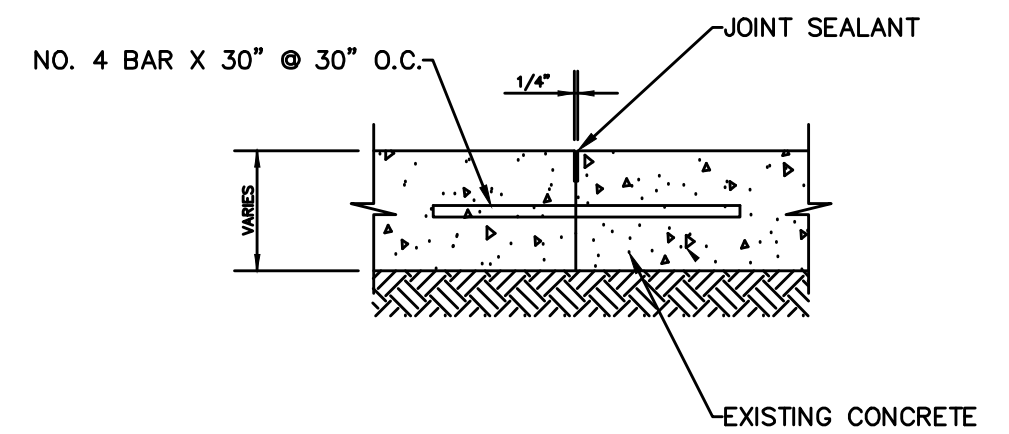
VALVE BOX TOP



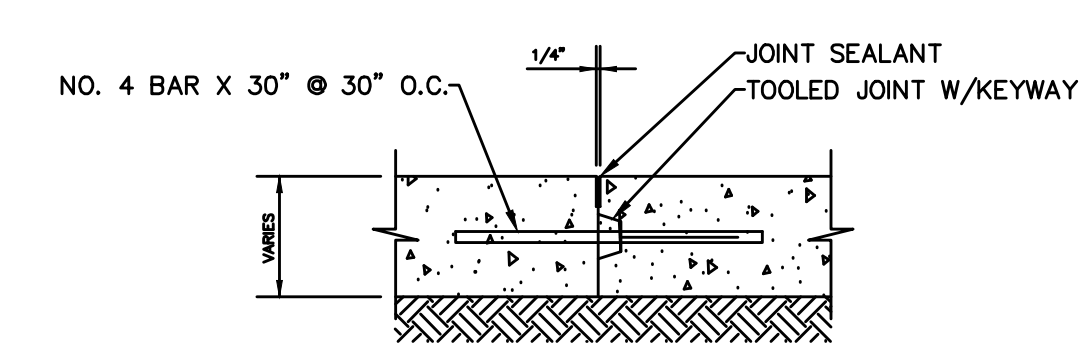
GATE VALVE AND BOX
NOT TO SCALE



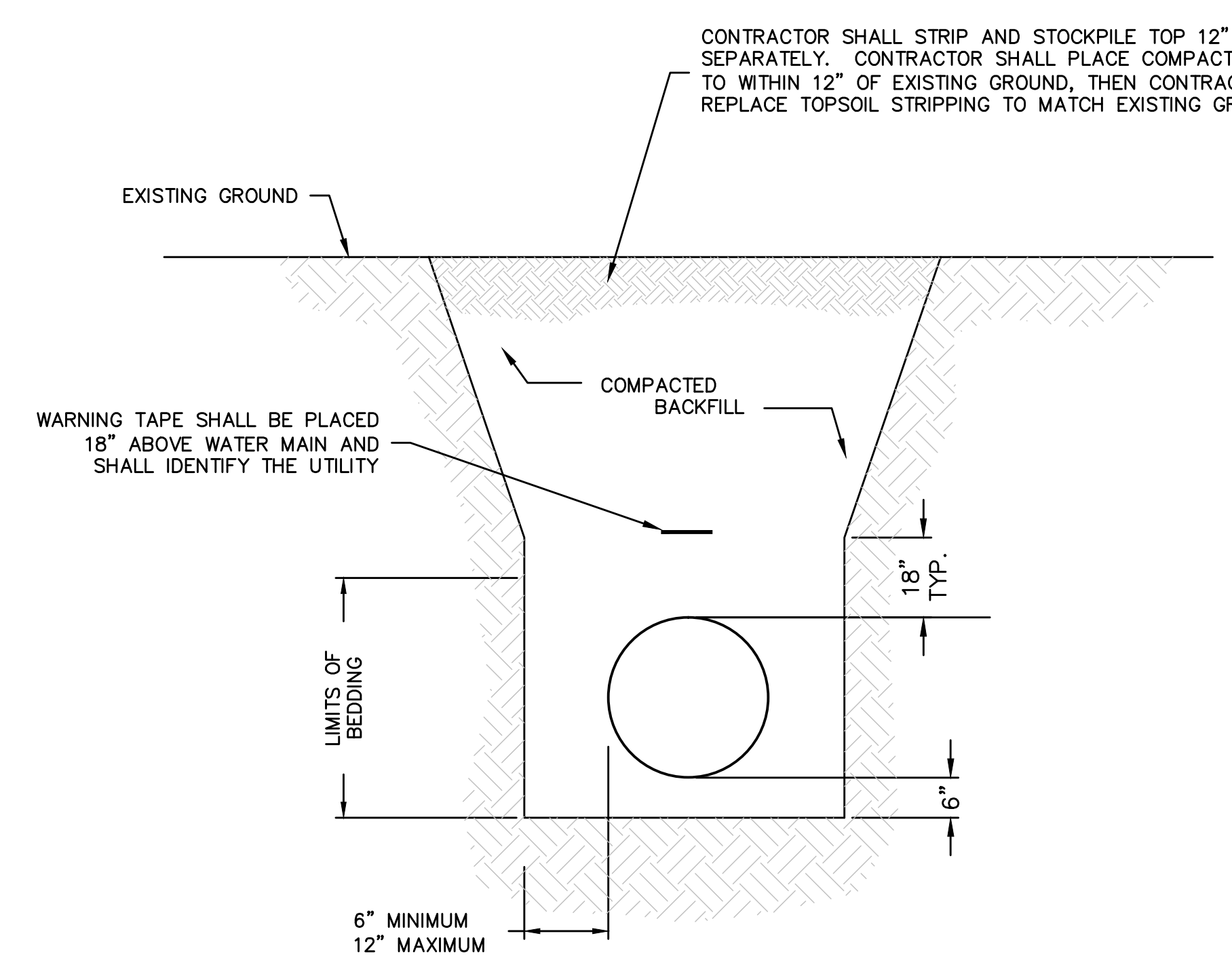
CONTRACTION JOINT
NOT TO SCALE



CONCRETE TO CONCRETE JOINT
NOT TO SCALE

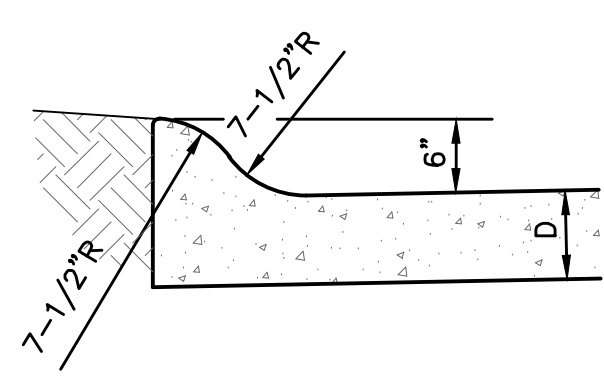


CONSTRUCTION JOINT
NOT TO SCALE



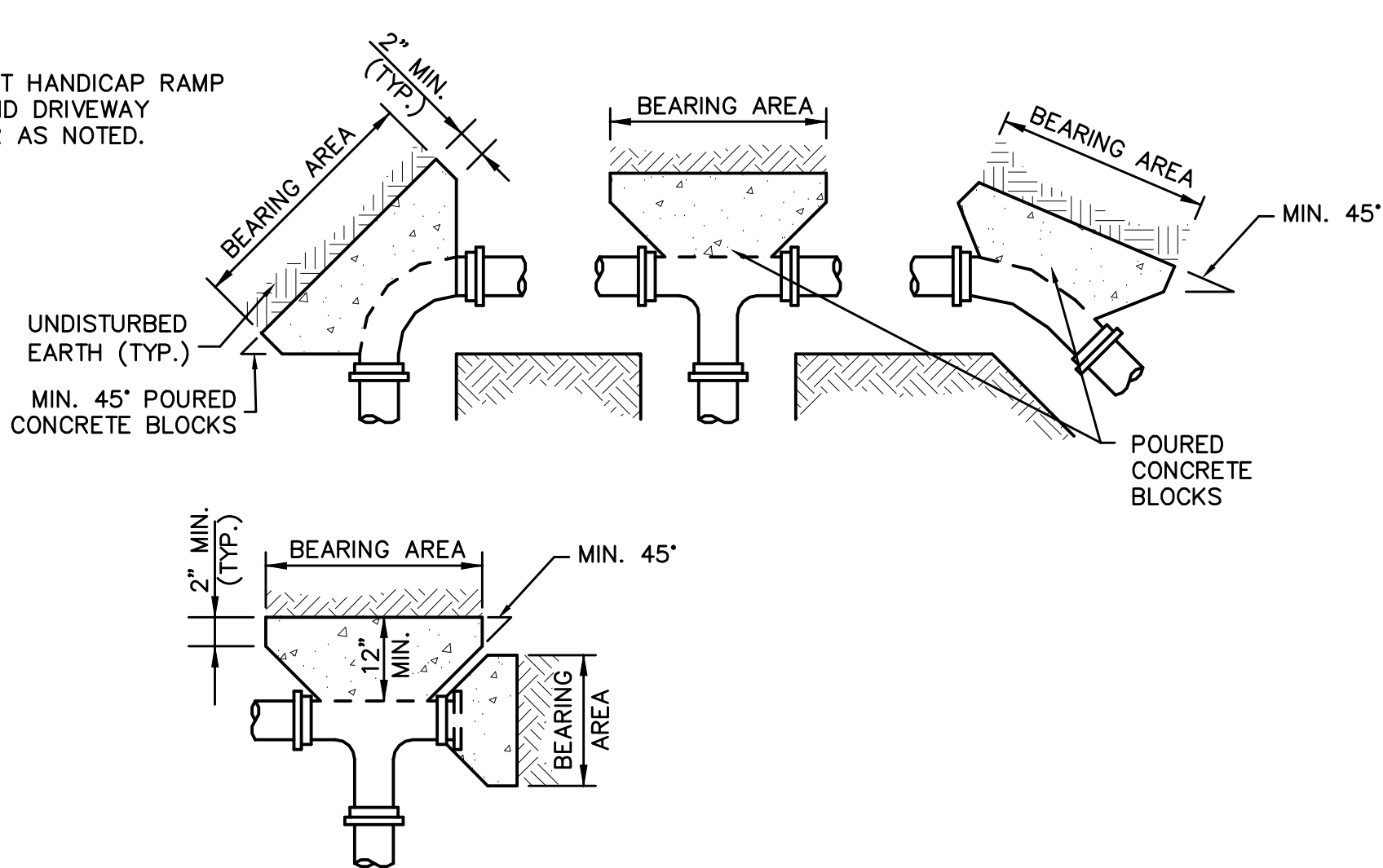
NOTES:
TRACE WIRE SHALL BE NO. 12 COPPER, PLASTIC COATED.
TRENCH WALLS TO BE SUPPORTED AS REQUIRED BY O.S.H.A.
NATIVE MATERIAL SHALL BE ACCEPTABLE FOR PIPE BEDDING.
FINAL GRADES ALONG PIPE ROUTES SHALL MATCH THE EXISTING GRADES. ANY ADDITIONAL MATERIAL REQUIRED TO MATCH EXISTING GRADES SHALL BE CONSIDERED SUBSIDIARY.

TRENCH FOR SINGLE PIPE
NOT TO SCALE



INTEGRAL CURB
NOT TO SCALE

NOTE:
DROP CURB AT HANDICAP RAMP LOCATIONS AND DRIVEWAY LOCATIONS OR AS NOTED.



TYPICAL THRUST BLOCKING
NOT TO SCALE

1. PLACE 4 MIL. POLYETHYLENE BETWEEN CONCRETE AND FITTING (CONCRETE SHALL NOT INTERFERE WITH JOINT.)
2. MINIMUM CONCRETE THICKNESS SHALL BE 12 INCHES
3. THE HORIZONTAL DIMENSION OF THE BEARING AREA SHALL BE BETWEEN 0.8 AND 1.25 TIMES THE VERTICAL DIMENSION
4. THRUST BLOCK ORIENTATION SHALL BE SUCH THAT THE CENTER OF THE FITTING CORRESPONDS WITH THE CENTER OF THE THRUST BLOCK
5. THE MINIMUM ALLOWABLE ANGLE (EITHER VERTICAL OR HORIZONTAL) SHALL BE 45 DEGREES
6. REVERSE THRUST BLOCKS SHALL BE WRAPPED WITH A MINIMUM OF 2-NO. 4 REBAR AND EMBEDDED 9" MINIMUM INTO CONCRETE.
7. PREFABRICATED THRUST BLOCKS ARE NOT PERMISSIBLE.
8. THRUST BLOCKS SHALL BE CONSIDERED SUBSIDIARY TO DUCTILE IRON FITTINGS.

| PIPE SIZES | BEARING AREA OF BLOCK IN SQ. FT. | | | | |
|------------|----------------------------------|----------|----------|--------------|--------------|
| | TEE & END | 90° BEND | 45° BEND | 22 1/2° BEND | 11 1/4° BEND |
| 4" DIA. | 2.0 | 2.0 | 2.0 | 2.0 | 2.0 |
| 6" DIA. | 3.0 | 4.0 | 2.5 | 2.0 | 2.0 |
| 8" DIA. | 5.0 | 7.5 | 4.0 | 2.0 | 2.0 |



BID PACKAGE 2

ALL SAINTS CHURCH AND SCHOOL

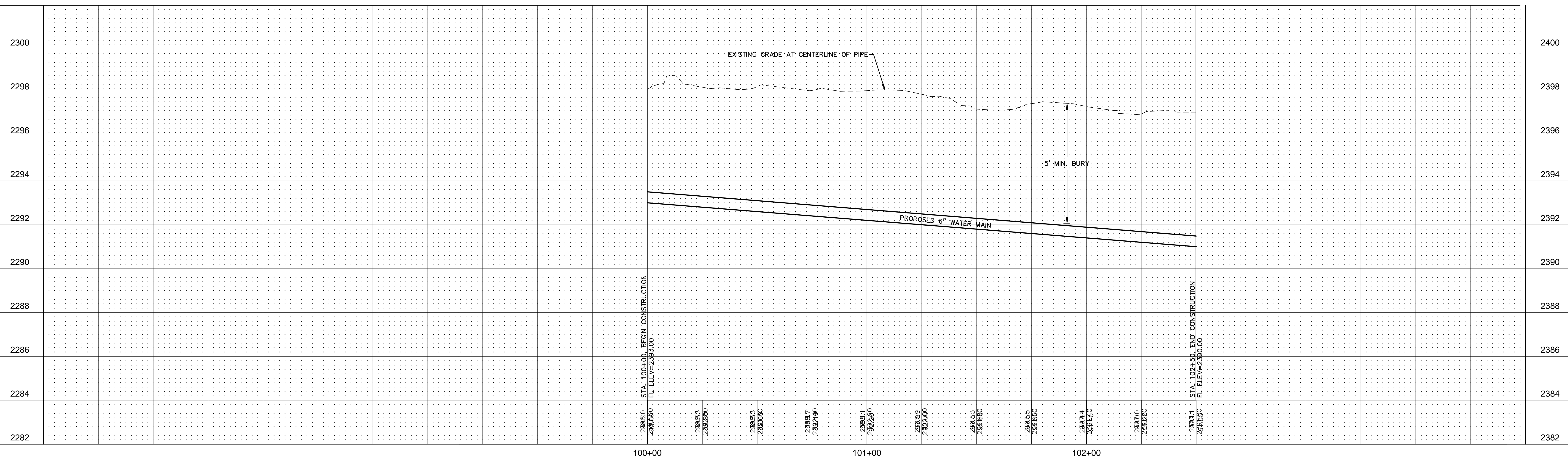
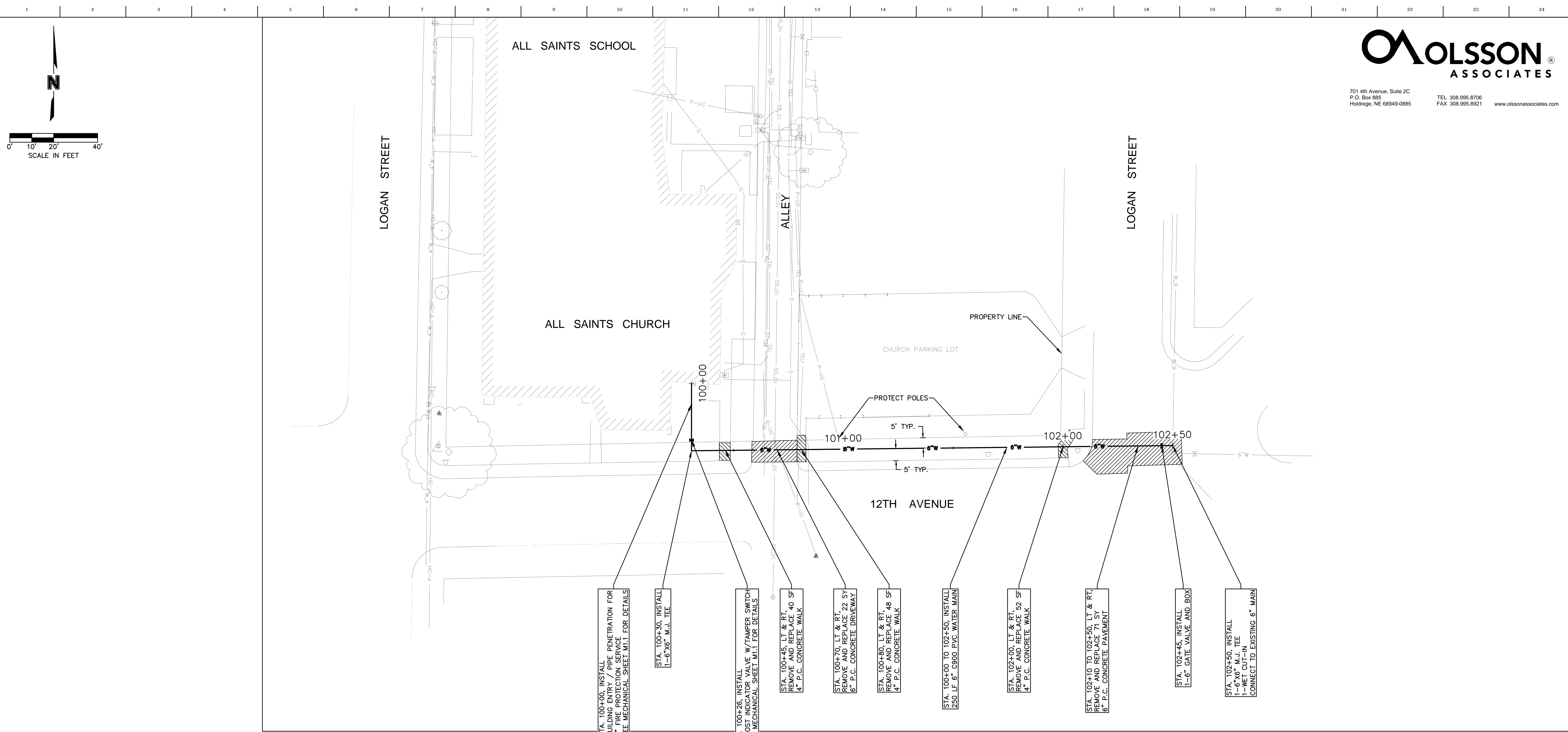
PROJECT: L11011.1 DATE: 05/29/2014

GENERAL NOTES AND DETAILS



C1.0

June 12, 2014, 2:14pm, 014-1201-MH-14P.dwg, James



June 12, 2014 2:14pm 014-102-Water Main.dwg Jansen



ARCHITECT
 BAHR VERMEER HAECKER ARCHITECTS
 440 N 8TH ST STE 100
 LINCOLN, NE 68508
 V 402.475.4551
 F 402.475.0226
 bvh.com

CIVIL ENGINEER
 MOLSSON ASSOCIATES
 701 4th Avenue, Suite 2C
 Holdrege, NE 68949
 V 308.995.8706
 F 308.995.8921

STRUCTURAL ENGINEER
 STRUCTURAL DESIGN GROUP
 105 N. 8TH STREET - SUITE 100
 LINCOLN, NE 68508
 V 402.438.7788
 F 402.438.7790

MECHANICAL ELECTRICAL ENGINEERS
 ALVINE ENGINEERING
 1800 O St - SUITE 104
 LINCOLN, NE 68508
 V 402.477.6161
 F 402.477.9616

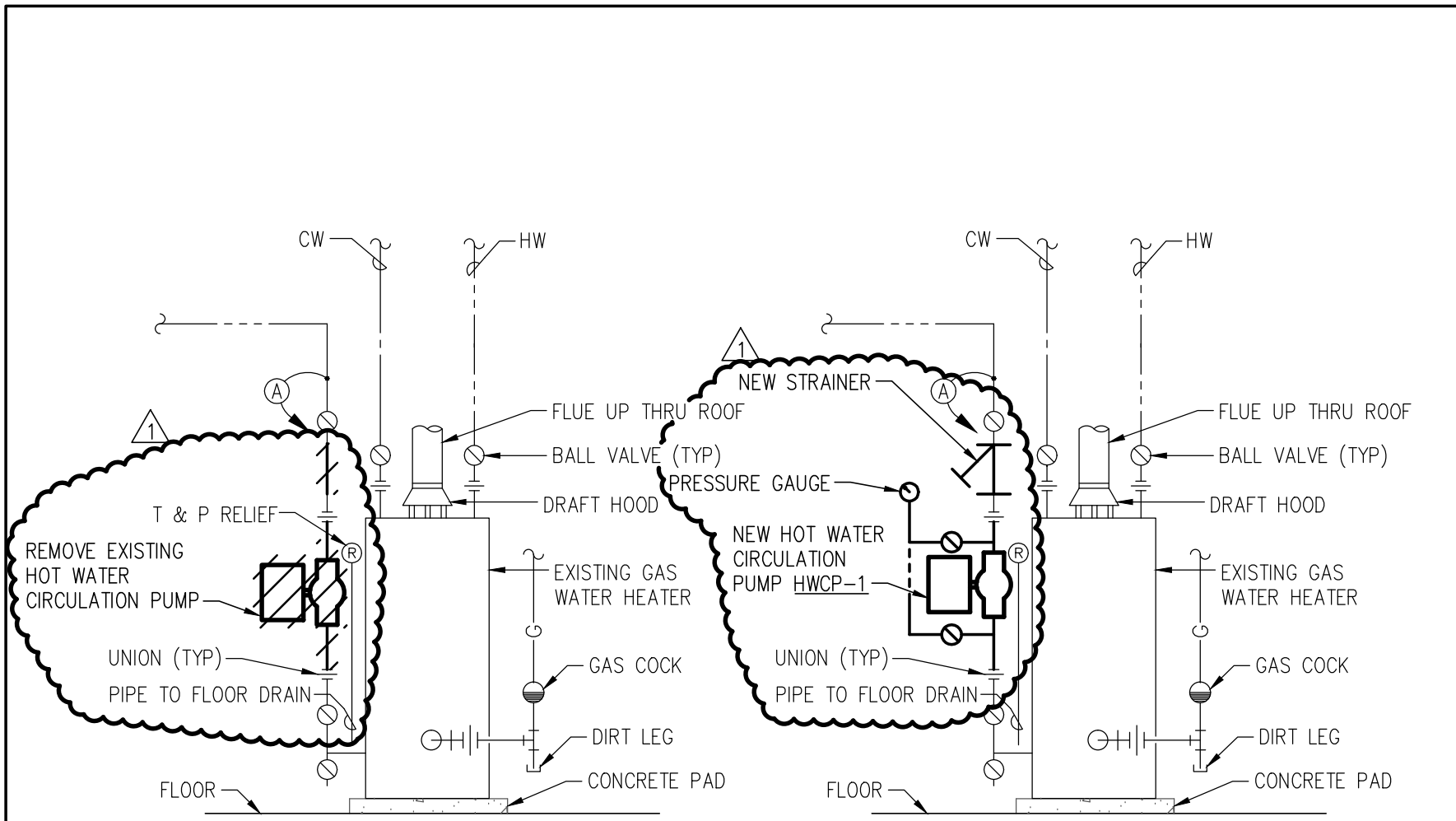


BID PACKAGE 2
ALL SAINTS CHURCH AND SCHOOL

PROJECT: L11011.1 DATE: 05/29/2014

FIRE PROTECTION WATER LINE PLAN & PROFILE





DEMOLITION

NEW WORK

GAS WATER HEATER WITH CIRCULATION PUMP

NO SCALE

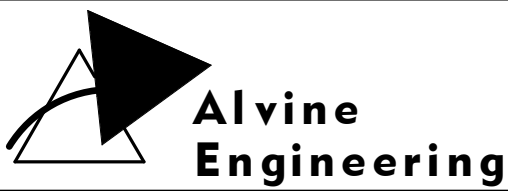
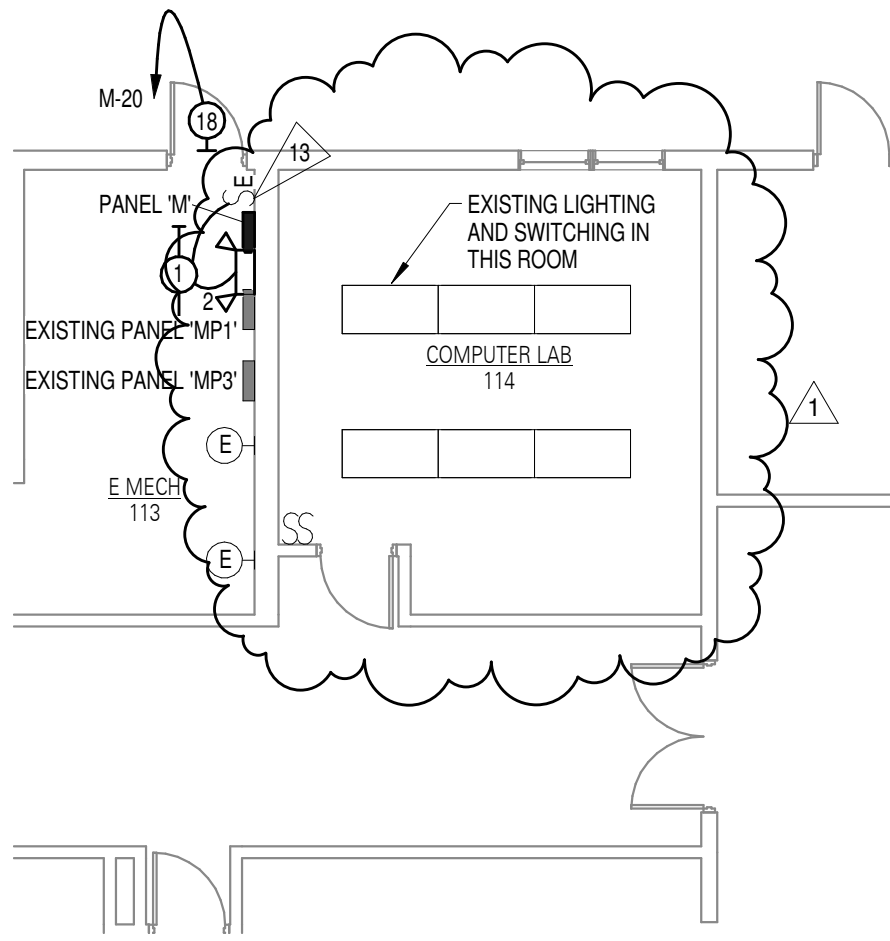
13
M3.1

ALL SAINTS CHURCH

| | | | |
|-------------------------|--------------------|-----------------------------|----------------|
| PROJECT NO. 20133925 | DATE 06/16/2014 | DRAWING REFERENCED: M3.1 | SKETCH MS-4 |
| | | ADDENDUM NO.: 1 | |

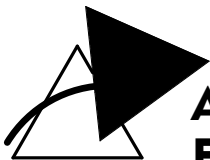
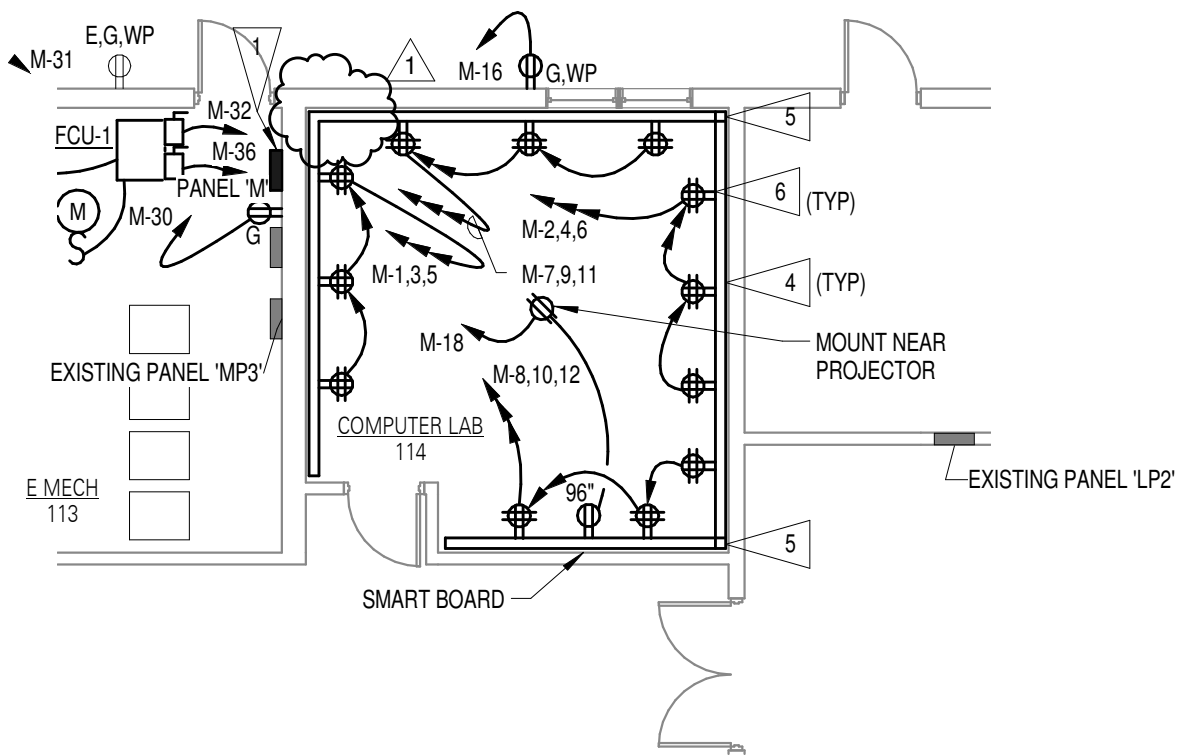


20 PROVIDE FIRE RATED TENT ON TOP OF LIGHTING FIXTURE. 1



ALL SAINTS CHURCH

| | | | | |
|-------------|------------|---------------------|------|----------------|
| PROJECT NO. | DATE | DRAWING REFERENCED: | E1.1 | SKETCH ES-3 |
| 20133925 | 06/16/2014 | ADDENDUM NO.: | 1 | |



**Alvine
Engineering**

ALL SAINTS CHURCH

| | | | | |
|-------------|------------|---------------------|------|----------------|
| PROJECT NO. | DATE | DRAWING REFERENCED: | E2.1 | SKETCH ES-4 |
| 20133925 | 06/16/2014 | ADDENDUM NO.: | 1 | |

