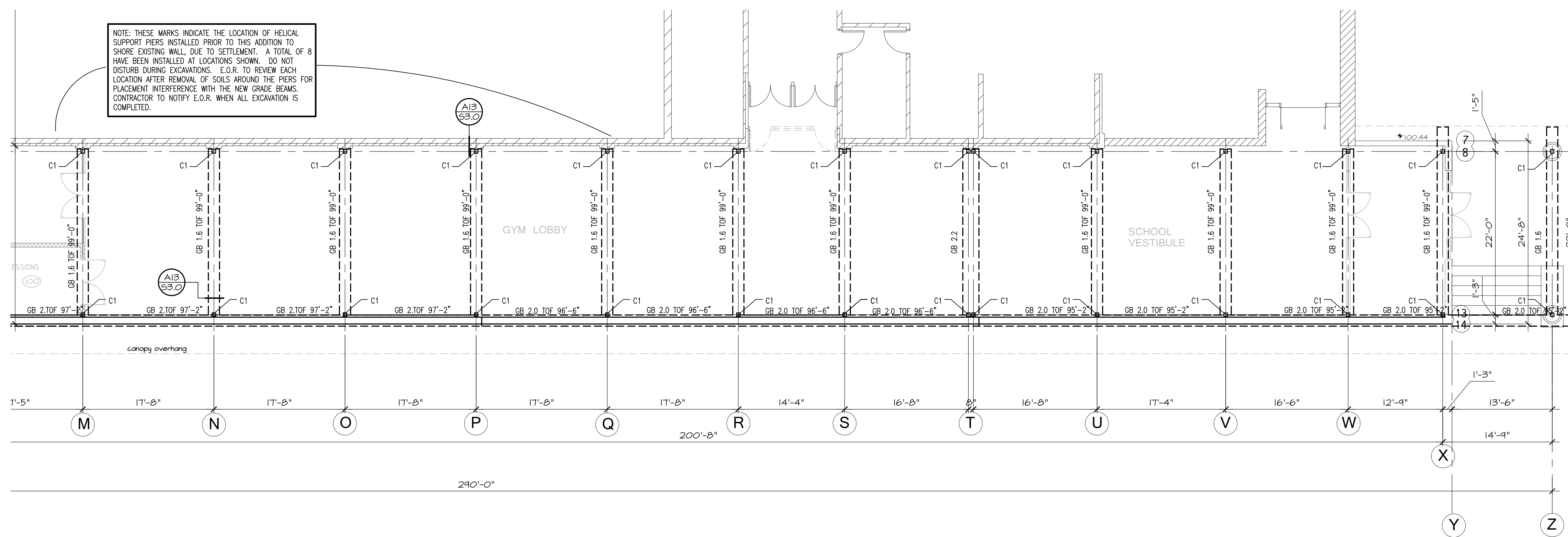


Larry Chilese Architects Inc.

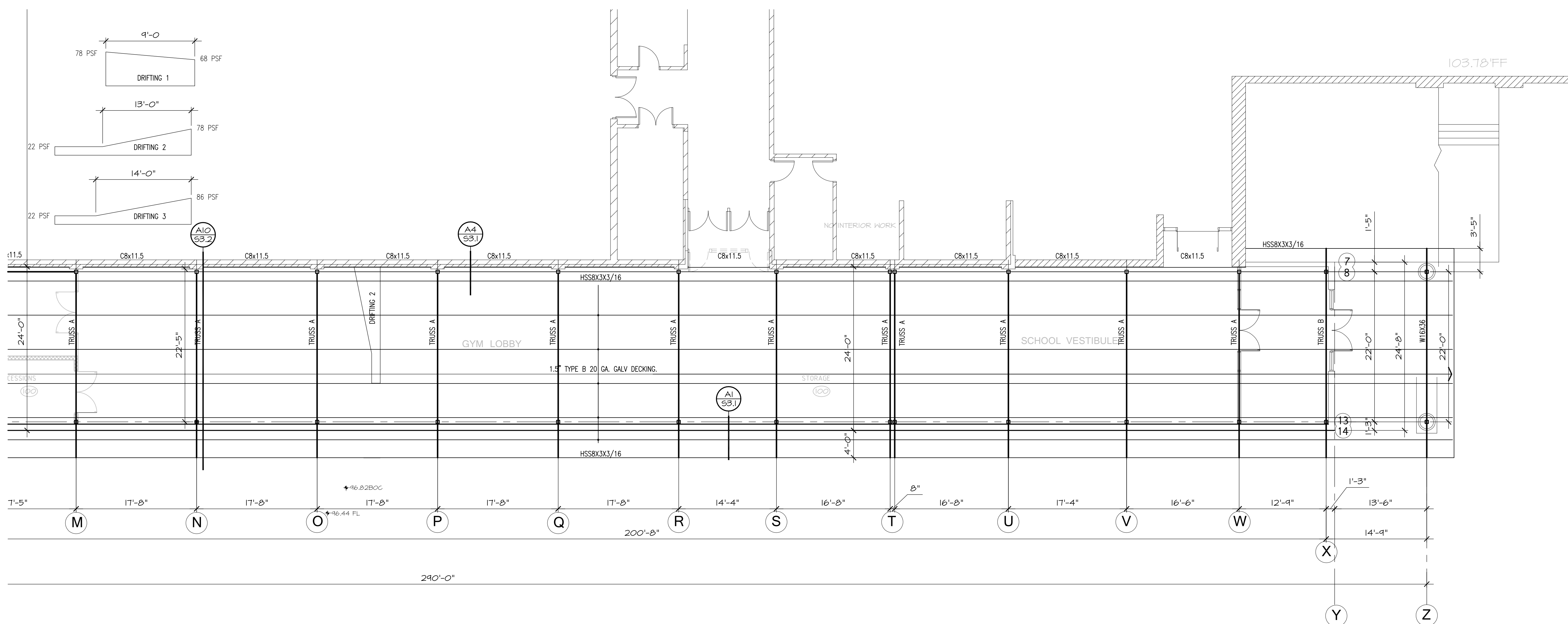
HTRS School Addition
Humboldt Nebraska

ADDENDUM ONE 6/4/2014

Addendum One Item One: Reissue Structural sheets S2.0, S2.1, and S2.2.



PARTIAL FOOTING FOUNDATION PLAN
 1/8" = 1'-0" FINISH FLOOR 100'-0"



PARTIAL ROOF FRAMING
 1/8" = 1'-0"

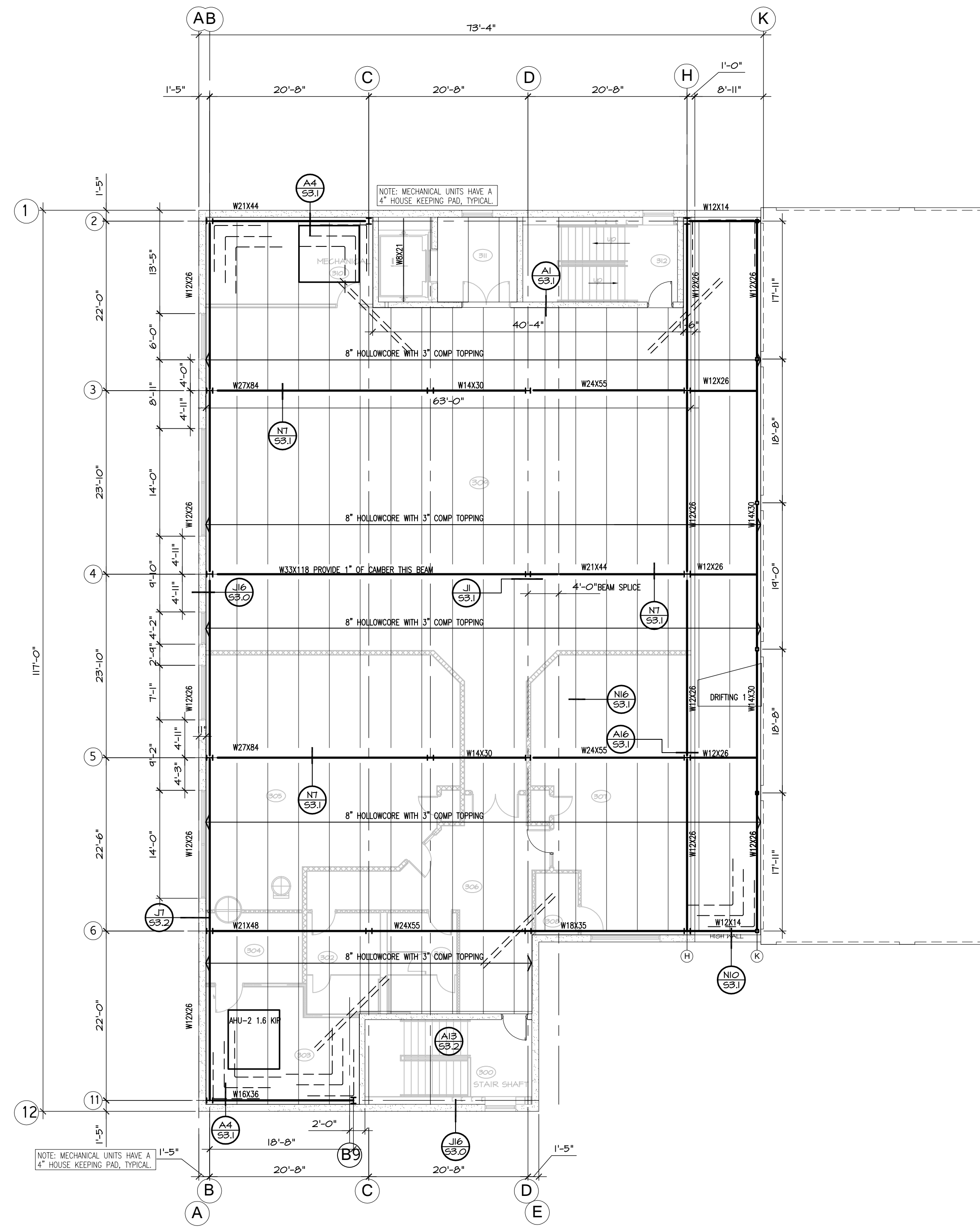
HTRS HUMBOLT HIGH SCHOOL 2014
 Larry Chilse Architects, Inc., Lincoln, Nebraska

| | |
|----------------|---------|
| PROJECTING | DATE |
| DESIGNED BY | 10/1/14 |
| CHECKED BY | 10/1/14 |
| ISSUE DATE | 10/1/14 |
| REVISIONS | |
| 1. ADDENDUM #1 | 6-4-14 |
| 2. ADDENDUM #1 | 6-4-14 |
| 3. ADDENDUM #1 | 6-4-14 |
| 4. ADDENDUM #1 | 6-4-14 |
| 5. ADDENDUM #1 | 6-4-14 |
| 6. ADDENDUM #1 | 6-4-14 |
| 7. ADDENDUM #1 | 6-4-14 |
| 8. ADDENDUM #1 | 6-4-14 |
| 9. ADDENDUM #1 | 6-4-14 |

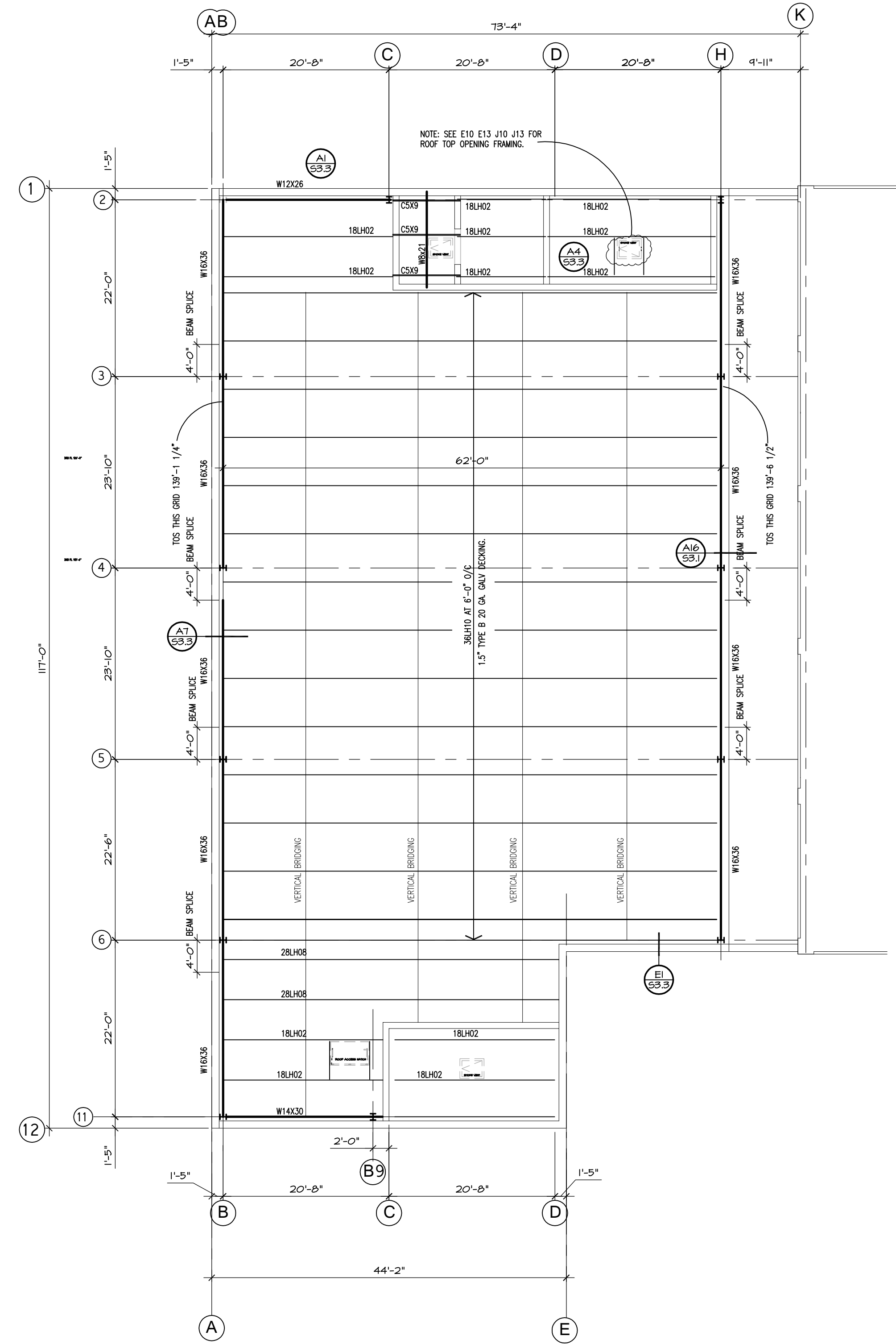
Structural Systems Design, Inc.
 Structural Engineers
 200 S.W. 246 Street
 Lincoln, NE 68503
 Phone: (402) 421-1133
 Fax: (402) 421-1244

DEAN PROCHNOW
 P.E.
 STATE OF NEBRASKA

S2.1



THIRD FLOOR FRAMING PLAN
1/8" = 1'-0"
105 THD FLOOR 125-1



PARTIAL ROOF FRAMING PLAN
1/8" = 1'-0"

| | | |
|-----------------------|------------|--------------------------|
| REVISIONS | ISSUE DATE | PROJECT NAME |
| 1. --- | --- | HTRS HUMBOLT HIGH SCHOOL |
| 2. ADDENDUM #1 6-4-14 | --- | --- |
| 3. --- | --- | --- |
| 4. --- | --- | --- |
| 5. --- | --- | --- |
| 6. --- | --- | --- |
| 7. --- | --- | --- |
| 8. --- | --- | --- |
| 9. --- | --- | --- |

