



ARCHITECTURE • ENGINEERING • INTERIOR DESIGN

ADDENDUM

PROJECT: University of South Dakota
Davidson Building
UPS
Vermillion, South Dakota

ADDENDUM NUMBER

AD-1

ISSUED BY:

Kori Aaker, Electrical Engineer

PROJECT #: 14-0049

DATE ISSUED: Friday, May 16, 2014

This addendum is issued by the Architect to all known bidders before receipt of proposals, for the purpose of explaining, interpreting, or modifying the original plans and specifications. When enumerated by the bidder upon the proposal sheet, the information or instructions given hereon will be equally binding upon all parties as if included in the original plans and specifications.

BIDDER MUST ENTER THE NUMBER OF THIS ADDENDUM ON HIS PROPOSAL SHEET

THE FOLLOWING ITEMS ARE APPLICABLE TO THE DRAWINGS:

AD-1, ITEM 1:

In reference to Sheet E-101, revise Data 16A as indicated in Supplemental Drawing E-101.1 attached.

AD-1, ITEM 2:

In reference to Sheet E-101, UPS Room 16B, add duplex receptacle on north wall above UPS and connect to receptacle circuit serving this room.

AD-1, ITEM 3:

In reference to Sheet E-101, revise Electrical Keynote '7' reading "Provide NEMA L5-20 receptacle. Coordinate exact location with USD ITS."

AD-1, ITEM 4:

In reference to Sheet E-101, add Electrical Keynote '15' reading "Provide NEMA L6-20 receptacle. Coordinate exact location with USD ITS."

AD-1, ITEM 5:

In reference to Sheet E-101, add Electrical Keynote '16' reading "Provide NEMA L6-30 receptacle. Coordinate exact location with USD ITS."

AD-1, ITEM 6:

In reference to Sheet E-101, add Electrical Keynote '17' reading "Extreme caution must be taken while performing work in this area. Coordinate all installation with USD ITS."

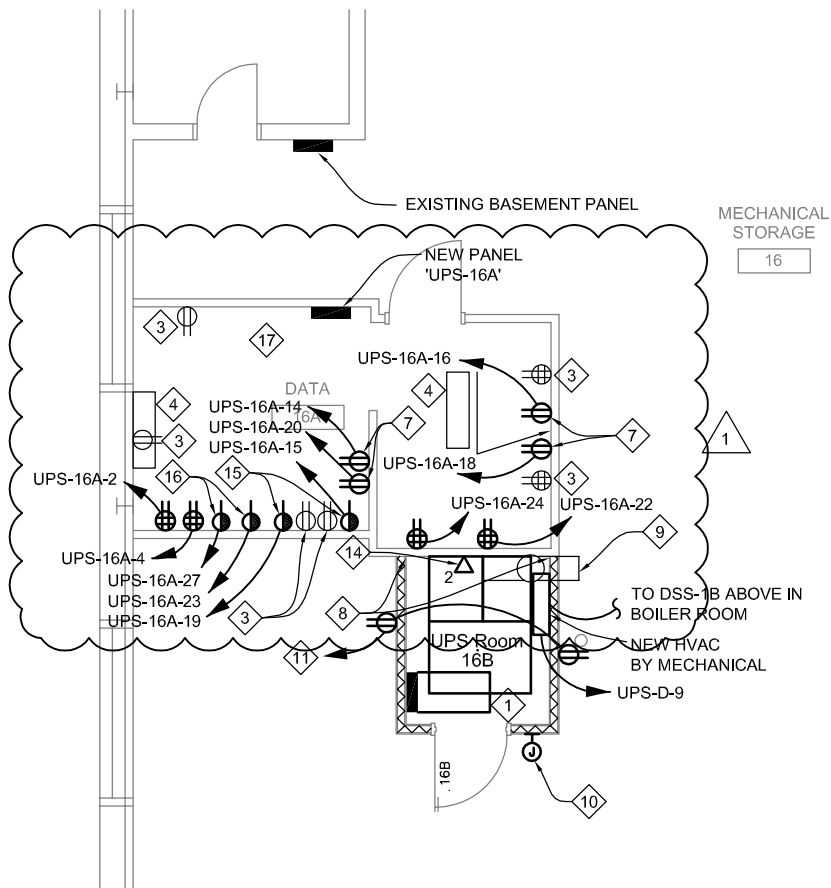
AD-1, ITEM 7:

In reference to Sheet E-601, revise panel schedule for UPS-16A as indicated in Supplemental Drawing E-601.1 attached.

AD-1, ITEM 8:


In reference to Sheet E-601, Panel Schedule UPS-D, change panel to 24 pole in lieu of 30 pole. Change circuits 1,3,5 to a 90/3 breaker in lieu of 60/3 breaker.

END AD-1



PARTIAL BASEMENT FLOOR PLAN

Scale: 1/8" = 1'-0"

 <p>DAVIS DESIGN ARCHITECTURE ENGINEERING INTERIOR DESIGN</p>	<p>Lincoln 1221 N Street, Suite 600 Lincoln NE 68508 Phone 402-476-9700 Fax 402-476-9722</p>	<p>University of South Dakota Vermillion, SD 57069</p>	<p>Issue Date 05-16-2014 Job # 14-0049 Drawn by: JEP CADD file: E-101.1 COPYRIGHT © DAVIS DESIGN ALL RIGHTS RESERVED</p>	
	<p>Vermillion 15 East Main, Suite 201 Vermillion SD 57069 Phone 605-624-1081</p>	<p>Davidson Hall UPS Upgrades</p>	<p>Drawing Title Revised Data 16A</p>	<p>From Sheet: E-101 for CA use: Drawing # E-101.1</p>
	<p>OSE Proj. No. R0614-22x</p>			

PANEL SCHEDULE

PANEL TAG: UPS-16A			3 PHS.			120/ 208 VOLT			90 AMP MAIN BREAKER			MOUNTING:	
NOT SERVICE RATED			4 WIRE			22K A.I.C.			1 NEMA ENCLOSURE TYPE			SURFACE	
CKT	O/C PROT.	DESCRIPTION	DISTRIBUTION K.W.			PH	DISTRIBUTION K.W.			DESCRIPTION	O/C PROT.	CKT	
			LTG	REC	MTR		LTG	REC	MTR				
1	20/1	EXT'G DATA 16A RECEPTACLES		0.6		A		0.8		SOUTH DATA 16A QUAD RECEPT	20/1	2	
3	20/1	EXT'G DATA 16A RECEPTACLES		0.6		B		0.8		SOUTH DATA 16A QUAD RECEPT	20/1	4	
5	20/1	EXT'G DATA 16A RECEPTACLES		0.6		C		1.5		DATA 16A SPLIT SYSTEM	20/2	6	
7	20/2	EXT'G DATA 16A RECEPTACLES		1.5		A		1.5			-	8	
9	-	-		1.5		B		1.5		DATA 16A SPLIT SYSTEM	20/2	10	
11	20/2	EXT'G DATA 16A RECEPTACLES		1.5		C		1.5			-	12	
13	-	-		1.5		A		0.2		MIDDLE DATA 16A RECEPTS	20/1	14	
15	20/2	SOUTH CHASSIS OUTLET		1		B		0.2		EAST DATA 16A RECEPTS	20/1	16	
17	-	-		1		C		0.2		EAST DATA 16A RECEPTS	20/1	18	
19	20/2	SOUTH CHASSIS OUTLET		1		A		0.2		MIDDLE DATA 16A RECEPTS	20/1	20	
21	-	-		1		B		0.4		EAST DATA 16A QUAD RECEPT	20/1	22	
23	30/2	SOUTH OUTLET		1.5		C		0.4		EAST DATA 16A QUAD RECEPT	20/1	24	
25	-	-		1.5		A				SPACE ONLY		26	
27	30/2	SOUTH OUTLET		1.5		B				SPACE ONLY		28	
29	-	-		1.5		C				SPACE ONLY		30	

NOTES:

1



Lincoln
1221 N Street, Suite 600
Lincoln NE 68508
Phone 402-476-9700
Fax 402-476-9722

Vermillion
15 East Main, Suite 201
Vermillion SD 57069
Phone 605-624-1081

**University of South
Dakota**

Vermillion, SD 57069

Davidson Hall

UPS Upgrades

OSE Proj. No. R0614-22x

Issue Date	05-16-2014
Job #	14-0049
Drawn by:	JEP
CADD file:	E-601.1
<small>COPYRIGHT © DAVIS DESIGN ALL RIGHTS RESERVED</small>	

Drawing Title
Added Panel Schedule
UPS-16A

From Sheet: E-601 for CA use:

Drawing #
E-601.1