

TCEP No.: 097-034-14
LPS No.: #7636-A

ADDENDUM NO. 2

The Architect/ Engineer issues this addendum, applicable to the above named project, to all known Contractors before receipt of proposal.

This addendum includes Item Number 2-1 thru 2-23. This addendum item shall be fully incorporated into the Bidding/Contract Documents and have the same force and effect as though originally included.

The Bidder shall acknowledge receipt of this Addendum No. 2 on the Bid Proposal Form in the place provided.

GENERAL

Item 2-1: Notice to Bidders

Revise the first sentence to read in part the following: Sealed proposals will be received by the Board of Education of Lancaster County School District at the office of the purchasing agent, 800 S. 24th St. Lincoln, NE 68510, up to...

TELECOMMUNICATIONS

Item 2-2: General Modifications/Clarifications for all Schools within this Project

- Refer to any new receptacle outlets being installed at new telecom rack locations. All notes that refer to this receptacle to be one duplex and one L5-20R shall be changed to read "ONE DOUBLE DUPLEX RECEPTACLE". The device currently indicated on the plan as a special receptacle shall be in fact a double duplex receptacle.
- Refer to all riser diagrams within this project. All horizontal wire management shown as 1U shall be changed to be 2U, no 1U shall be installed in this project.
- Contractor shall fire seal all sleeves after the installation of all cabling.

Specifications

Item 2-3: Section 27 05 01-Common Work Result for Communications

The attached LPS Bid Package A Preapproved Components List shall be inserted at the end of this section.

Item 2-4: Section 281300-Security Management System (SMS)

Add paragraph 1.2.A.5 to read as follows: The Building Automation System (BAS) shall have three (3) separate controllers to operate (1) the Mechanical Equipment the (1) Zero Node controller to operate the Security System to include the Access Control Equipment and the (1) Bacnet controller (BCX) for future control of foreign equipment. Netcontrollers shall be located in the same location and marked clearly next to each Netcontroller HVAC, Security and Bacnet. Each Netcontroller shall have its own power supply and disconnect located in the panel which the Netcontroller resides in also marked clearly as to which controller is served. Transformers and Circuit breakers shall be separate and marked accordingly.

TCEP No.: 097-034-14
LPS No.: #7636-A

Drawings

Item 2-5: Clarification on Sheet 000.C106: LPS Standard Telecommunications Faceplate Details

Question: C106, Detail 12 shows Cat6 pre-terminated patch cable from A/V gearbox to Teacher desk location. C106, Detail 3 shows Teacher desk location to have a Cat6 modular jack and plate. How is pre-terminated patch cable to integrate to modular jack? Should this faceplate be a pass-through style in order to allow pre-terminated cable to connect to computer?

Response: The pre-terminated patch cable is terminated with an RJ45 on the gear box side and a modular female connector on the wall plate side. This is covered on the parts list included with this addendum.

Item 2-6: Sheet 000.C102: LPS Standard Telecommunications Rack Details

- Refer to the top right hand corner of the page, FLAG NOTES: flag note number 6 shall be changed to read the following: NEMA 5-20R (120V-20AMP) POWER OUTLET. SEE THE DRAWINGS.
- Detail #1 shall read "1 RACK ELEVATION (6 OR MORE PATCH PANELS PER RACK).
- Detail #2 shall read "1 RACK ELEVATION (5 OR FEWER PATH PANELS PER RACK).
- Detail #3 shall read "2 RACK ELEVATION (6 OR MORE PATCH PANELS PER RACK).
- Detail #4 shall read "2 RACK ELEVATION (5 OR FEWER PATCH PANELS PER RACK).

Item 2-7: Sheet 000.C106: LPS Standard Telecommunications Faceplate Details

Refer to Detail #8: INTERIOR CEILING MOUNT ACCESS POINT ROUGH-IN:

- Refer to the left hand side of the detail, note that states: "PLACE SELF-ADHESIVE GREEN DOT INDICATOR UNDER CABLING" shall be changed to read "PLACE LABEL ON GRID UNDER SLACK LOOP".
- Refer to the right hand side of the detail, note that states "PROVIDE 1 ½" HOLE, LPS TO PROVIDE TEMPLATE" shall be changed to: "PROVIDE A 1 1/4" WIDE X 2 3/8" DEEP NOTCH, CENTERED ON THE EDGE OF THE TILE NEXT TO THE WAP.

Item 2-8: Sheet 120.T01.C: Arnold Elementary First Floor Telecommunications Plan – Area C

Refer to Health Office 100K, plan note number 16 indicated to the pushbutton. This shall be relocated to the desk in the Main Office 100. Coordinate exact location with LPS.

TCEP No.: 097-034-14
LPS No.: #7636-A

Item 2-9: Sheet 120.T21: Arnold Elementary School Telecommunications Riser Diagrams

Refer to TELECOM ROOM 'IDF-B' RISER plan. Plan note numbers 1 and 2 shall be indicated at the top of the rack. LPS will adjust equipment down in order to locate the new patch panels at the top.

Item 2-10: Sheet 131.T00: Campbell Elementary School Telecommunications Orientation Plan

Plan note number 6 shall read: "UPPER LEVEL MECHANICAL PENTHOUSE, LOCATION OF THE NEW 'IDF-F' LOCATION."

Item 2-11: Sheet 131.T00: Cavett Elementary School Telecommunications Orientation Plan

Plan note number 6 shall read: "UPPER LEVEL MECHANICAL PENTHOUSE, LOCATION OF THE NEW 'IDF-F' LOCATION."

Item 2-12: Sheet 153.T00: Maxey Elementary School Telecommunications Orientation Plan

Plan note number 6 shall read: "UPPER LEVEL MECHANICAL PENTHOUSE, LOCATION OF THE NEW 'IDF-F' LOCATION."

Item 2-13: Sheet 170.T00: Roper Elementary School Telecommunications Orientation Plan

- Plan note number 6 shall read: "UPPER LEVEL MECHANICAL PENTHOUSE, LOCATION OF THE NEW 'IDF-F' LOCATION."
- Refer to the cable routing boundary line for 'IDF-G' & 'IDF-H'. The boundary line shall move down to include computer room 802 being routed to 'IDF-G'

Item 2-14: Sheet 170.T01.F: Roper Elementary First Floor Telecommunications Plan – Area F

Refer to the cable routing boundary line for 'IDF-G' & 'IDF-H'. The boundary line shall move to the right to include computer room 802 being routed to 'IDF-G'.

Item 2-15: Sheet 170.T21: Roper Elementary Telecommunications Riser Diagrams

Refer to 'IDF-G' & 'IDF-H', the fiber indicated being routed to both of these relay racks shall be removed completely. Plan note number 1 on both riser diagrams shall read: "NOT USED." These existing racks have existing OM3 fiber in place.

Item 2-16: Sheet 220.T01.A: Lux Middle School First Floor Telecommunications Plan – Area A

Refer to room 104, one additional outlet shall be installed in this room next to the one currently indicated by plan note number 13. The new outlet shall also have a plan note number 13 indicated to the outlet. This outlet shall have the same designation as the current one.

TCEP No.: 097-034-14
LPS No.: #7636-A

Item 2-17: Sheet 220.T01.B: Lux Middle School First Floor Telecommunications Plan – Area B

- Refer to room 203, a new teaching desk outlet location shall be installed on the left side of the projector location, towards the end of the wall. This teaching desk outlet location shall have a plan note number 7 attached to it and it shall also have +46", R3, and 0,1 indicated next to it.
- Refer to room 204, a new teaching desk outlet location shall be installed on the right side of the projector location, towards the end of the wall. This teaching desk outlet location shall have a plan note number 7 attached to it and it shall also have +46", R3, and 0,1 indicated next to it.
- Refer to corridor 282, directly adjacent to room 203 & 204. The plans indicate two sleeves with plan notes 13 to them, these sleeves shall be stubbed from corridor 282 into room 203A.

Item 2-18: Sheet 220.T01.C: Lux Middle School First Floor Telecommunications Plan – Area C

Refer to room 332, the existing telecom outlet indicated on the far left of the checkout desk is an existing voice outlet, shall have a plan note number 15 indicated to this location. Contractor shall replace the existing faceplate with a four port faceplate and provide blanks in the unused ports as indicate in detail #1 on sheet 000.C106.

Item 2-19: Sheet 220.T01.E: Lux Middle School First Floor Telecommunications Plan – Area E

Refer to room 502, the telecom outlet indicated with a plan note number 3 shall have a +46" associated with the outlet.

Item 2-20: Sheet 218.T01.A: Scott Middle School First Floor Telecommunications Plan – Area A

Refer to room 104, one additional outlet shall be installed in this room next to the one currently indicated by plan note number 13. The new outlet shall also have a plan note number 13 indicated to the outlet. This outlet shall have the same designation as the current one.

Item 2-21: Sheet 220.T01.B: Scott Middle School First Floor Telecommunications Plan – Area B

- Refer to room 203, a new teaching desk outlet location shall be installed on the left side of the projector location, towards the end of the wall. This teaching desk outlet location shall have a plan note number 7 attached to it and it shall also have +46", R3, and 0,1 indicated next to it.
- Refer to room 204, a new teaching desk outlet location shall be installed on the right side of the projector location, towards the end of the wall. This teaching desk outlet location shall have a plan note number 7 attached to it and it shall also have +46", R3, and 0,1 indicated next to it.
- Refer to corridor 282, directly adjacent to room 203 & 204. The plans indicate two sleeves with plan notes 13 to them, these sleeves shall be stubbed from corridor 282 into room 203A.

TCEP No.: 097-034-14
LPS No.: #7636-A

Item 2-22: Sheet 220.T01.C: Scott Middle School First Floor Telecommunications Plan – Area C

Refer to room 332, the existing telecom outlet indicated on the far left of the checkout desk is an existing voice outlet, shall have a plan note number 15 indicated to this location. Contractor shall replace the existing faceplate with a four port faceplate and provide blanks in the unused ports as indicate in detail #1 on sheet 000.C106.

Item 2-23: Sheet 220.T01.E: Scott Middle School First Floor Telecommunications Plan – Area E

Refer to room 502, the telecom outlet indicated with a plan note number 3 shall have a +46" associated with the outlet.

Attachments: LPS Bid Package A Preapproved Components List, SDT-001

END OF ADDENDUM NO. 2

Pre-Approved Primary Components - Bid Package A

Lincoln Public Schools - Security Technology Ready Classroom Facilities Projects

General Contractor: _____

Communications Sub-Contractor: _____

Schools: _____

Bid Package No.: _____

Submittal Date: _____

Submittal No.: _____

Last Updated: 5/1/2014

27 05 01	COMMON WORK RESULTS					
	Warranties	Systemax	SCS - 20 Year		http://www.commscope.com/Product-Catalog/#market-enterprise	Match existing facility warranty(s) or as otherwise specified to match each facility
		Commscope Uniprise	CommScope Uniprise Warranty		http://www.commscope.com/Product-Catalog/#market-enterprise	Match existing facility warranty(s) or as otherwise specified to match each facility
27 05 27	GROUNDING AND BONDING					
	Telecommunications Main Ground Bar (TMGB)	Eritech	TMGB-A20L27PT		https://www.ericom.com/products/GroundBusbars.asp	Harger,Chatsworth
		Hubbell	HBBB14420JTP		http://ecatalog.hubbell-premise.com/LiteraturePDFs/Original_PLBM002R1.pdf	Hubbell Page 7 TMGB Tinned (TP)
		PANDUIT	GB4B0612TPI-1		http://www.panduit.com/wcs/Satellite?c=Page&childpagename=Panduit_Global%2FPG_Layout&cid=1345565612156&packedargs=item_id%3DGB4B0612TPI-1%2B%2B%2B%2B%2B%2B%2B%26locale%3Den_us&pagename=PG_Wrapper	
	Telecommunications IDF Ground Bar (TGB)	Eritech	TGB-A18L10PT		https://www.ericom.com/products/GroundBusbars.asp	Harger, Chatsworth
		Hubbell	HBBB14224BTP		http://ecatalog.hubbell-premise.com/LiteraturePDFs/Original_PLBM002R1.pdf	Hubbell Page 7 TMGB Tinned (TP)
		PANDUIT	GB2B0304TPI-1		http://www.panduit.com/wcs/Satellite?c=Page&childpagename=Panduit_Global%2FPG_Layout&cid=1345565612156&packedargs=item_id%3DGB2B0304TPI-1%2B%2B%2B%2B%2B%2B%2B%26locale%3Den_us&pagename=PG_Wrapper	
	Telecommunications Rack Ground Bar (TGB)	Panduit	RGRB19Y		http://www.panduit.com/wcs/Satellite?c=Page&childpagename=Panduit_Global%2FPG_Layout&cid=1345565612156&locale=en_us&pagename=PG_Wrapper&item_id=RGRB19Y	Harger, Chatsworth
		Hubbell	HGRKTHT*		http://ecatalog.hubbell-premise.com/LiteraturePDFs/Original_PLBM002R1.pdf	Hubbell page 4 19in tinned RGB
		PANDUIT	RGRB19Y		http://www.panduit.com/wcs/Satellite?c=Page&childpagename=Panduit_Global%2FPG_Layout&cid=1345565612156&packedargs=item_id%3DRGRB19Y%2B%2B%2B%2B%2B%2B%2B%26locale%3Den_us&pagename=PG_Wrapper	
27 05 28	PATHWAYS					
	1 5/16" J-Hooks	Erico	CAT21		http://www.ericom.com/part.asp?part=CAT21	
		PANDUIT	JP131W-L20		http://www.panduit.com/wcs/Satellite?q=JP131W-L20&c=Page&childpagename=Panduit_Global%2FPage%2FSearch_Layout&cid=1345565623132&packedargs=locale%3Den_us&pagename=Search_Wrapper	
	2" J-Hooks	Erico	CAT32		http://www.ericom.com/part.asp?part=CAT32	
		PANDUIT	JP2W-L20		http://www.panduit.com/wcs/Satellite?c=Page&childpagename=Panduit_Global%2FPG_Layout&cid=1345565612156&packedargs=item_id%3DJP2W-L20%2B%2B%2B%2B%2B%2B%2B%26locale%3Den_us&pagename=PG_Wrapper	
	4" J-Hooks	Erico	CAT64		http://www.ericom.com/part.asp?part=CAT64	

Pre-Approved Primary Components - Bid Package A

Lincoln Public Schools - Security Technology Ready Classroom Facilities Projects

Schools: _____

Submittal Date: _____

General Contractor: _____

Communications Sub-Contractor: _____

Bid Package No.: _____

Submittal No.: _____

Last Updated: 5/1/2014

					http://www.panduit.com/wcs/Satellite?c=Page&childpagename=Panduit_Global%2FPage%2FSearch_Layout&cid=1345565623132&packagedargs=locale%3Den_us&pagename=Search_Wrapper	
	Beam Clamp	PANDUIT Erico	JP4W-X20 BC		http://www.erico.com/part.asp?part=bc	
		PANDUIT	WRY-GRID		http://www.panduit.com/heiler/SpecificationSheets/WW-FRSP12%20(Wry-Grid%20Overhead%20Cable%20Tray)%20WEB%208-12-11.pdf	
	Cable Tray (Basket)	Cablofil	CF Series in sizes and mounting per detail drawings		http://www.cablofilproducts.com/catalog/dept_id_407.htm?sid=E83A891D806CAC5D7A18D8CB4DBE15F0&pid=1231	GS Metals, B-Line
	Cable Basket Tray	BASORFIL E-BFR	E-BFR series in sizes and mounting per detail drawings		http://www.basor.com/es-ES/descargar.php?doc=BASORFIL_E-BFR_EN.pdf	Basor Electric - www.basor.com
	Pre-Manufactured Sleeve Kit (2")	Hilti	CFS-SL SK 2		https://www.us.hilti.com/firestop-%26-fire-protection-systems/firestop-cast-in-%26-sleeve-devices/r41351	EZ Path
	Pre-Manufactured Sleeve Kit (4")	Hilti	CFS-SL SK 4		https://www.us.hilti.com/firestop-%26-fire-protection-systems/firestop-cast-in-%26-sleeve-devices/r41351	EZ Path
	Pre-Manufactured Sleeve Kit Gang Plate	Hilti	CFS-SL GP		https://www.us.hilti.com/firestop-%26-fire-protection-systems/firestop-cast-in-%26-sleeve-devices/r41324	EZ Path
	Inner Duct Non-Plenum, White, 1 1/4"	Carlson	Riser-Guard		http://www.carlonsales.com/techinfo/specifications/Spec-FLEXREF.pdf	Pyramid, Endot, Arcco
	Inner Duct Non-Plenum, White, 1 1/4"	Eastern Wire (Atkore/tyco)	PDRU1250F1000R		http://easternwire.com/product/riser-innerduct-fittings/	
	Inner Duct Plenum, White, 1 1/4"	Carlson	Plenum-Guard		http://www.carlonsales.com/techinfo/specifications/Spec-FLEXREF.pdf	Pyramid, Endot, Arcco
	Inner Duct Plenum, White, 1 1/4"	Eastern Wire (Atkore/tyco)	PDPU1250F1000R		http://easternwire.com/product/plenum-innerduct-fittings/	
	Surface Metal Raceway, Ivory (Single Communication Drop)	Wiremold	2000 Series		https://www.anixter.com/north-america/us/en/product-detail.V2000BC-WIREMOLD.232536.html	
	Surface Metal Raceway, Ivory (Single Communication Drop)	Hubbell	HBL 2000		http://ecatalog.hubbell-premise.com/ProductInformation/ViewCatalog.aspx?Dest=hubbell-premise.com/literature/ecatalog/r.pdf&Page=7	
	Surface Metal Raceway, Ivory (AV or Multiple Communications Drops)	Wiremold	2400 Series		https://www.anixter.com/north-america/us/en/product-detail.V2400BC-WIREMOLD.PG-Cable%2BManagement.258106.html	2400 divided where noted
	Surface Metal Raceway, Ivory (AV or Multiple Communications Drops)	Hubbell	HBL 2400		http://ecatalog.hubbell-premise.com/ProductInformation/ViewCatalog.aspx?Dest=hubbell-premise.com/literature/ecatalog/r.pdf&Page=8	2400 D divided where noted.
	Surface Raceway Boxes, Extra Deep, Ivory	Wiremold	V2444		https://objects.eanixter.com/PD328247.PDF	
	Surface Raceway Boxes, Extra Deep, Ivory	Hubbell	HBL2048		http://ecatalog.hubbell-premise.com/ProductInformation/ViewCatalog.aspx?Dest=hubbell-premise.com/literature/ecatalog/r.pdf&Page=7	
	Access Doors, Flush, Steel, White	Milcor	M-Series	Refer to Detail Drawings	http://www.milcorinc.com/files/assets/files/1368734235_M-ACCESSUB2.pdf	Miller , Nystrom

Pre-Approved Primary Components - Bid Package A

Lincoln Public Schools - Security Technology Ready Classroom Facilities Projects

Schools: _____

Submittal Date: _____

General Contractor: _____

Communications Sub-Contractor: _____

Bid Package No.: _____

Submittal No.: _____

Last Updated: 5/1/2014

27 11 01	COMMUNICATIONS EQUIPMENT ROOMS					
	7' Rack, Black	Uniprise	RK3-45A	760082479	http://www.commscope.com/catalog/enterprise/2147486193/product_details.aspx?id=26468	
	Vertical cable management, Front and Back - 6" W (Allowed only where Matching Existing or per Detail Drawings)	Uniprise	VCM-DS-84-6	760072785	https://www.anixter.com/north-america/us/en/product-detail.VCM-DS-84-6-COMMSCOPE-UNIPRISE-SOLUTIONS.365813.html	
	Vertical cable management, Front and Back - 8" (Preferred LPS Standard unless specifically required otherwise)	Uniprise	VCM-DS-84-8	760072793	https://www.anixter.com/north-america/us/en/product-detail.VCM-DS-84-8-COMMSCOPE-UNIPRISE-SOLUTIONS.365815.html	
	horizontal cable management, 2RU	Uniprise	HTK-19-SS-2U	760072959	http://www.commscope.com/catalog/enterprise/2147486211/product_details.aspx?id=26576	
	48 port patch panels - Cat 6 Flat	Uniprise	UNP-U-610-2U-48	760180059	http://www.commscope.com/catalog/enterprise/2147486166/product_details.aspx?id=33911	
	48 port patch panels - Cat 6A Flat	Uniprise	UNP-U-10G-2U-48	760162818	http://www.commscope.com/catalog/enterprise/2147486166/product_details.aspx?id=42	
27 13 23	OPTICAL BACKBONE CABLING					
	12 Strand Multimode Fiber Optic Cable, Aqua OM3 Lazerspeed 300 Non-Plenum	Uniprise	R-012-DS-5L.FSUAQ	700208150	http://www.commscope.com/catalog/wireless/4294967850/product_details.aspx?id=19470	
	12 Strand Single Mode Fiber Optic Cable, Yellow Non-Plenum	Uniprise	R-012-DS-8W-FSUYL	760004440	http://www.commscope.com/catalog/enterprise/2147486252/product_details.aspx?id=19466	
	12 Strand Multimode Fiber Optic Cable, Aqua Lazerspeed 300 Plenum	Uniprise	P-012-DS-5L.FSUAQ	700009731	http://www.commscope.com/catalog/enterprise/2147486252/product_details.aspx?id=19592	
	12 Strand Single Mode Fiber Optic Cable, Yellow Plenum	Uniprise	P-012-DS-5L.FSUAQ	760004358	http://www.commscope.com/catalog/enterprise/2147486252/product_details.aspx?id=19588	
	P-012-OD-5K-FSUBK Indoor/Outdoor Plenum Distribution Cable, 12 fiber single-unit	CommScope	P-012-OD-5K-FSUBK	760037432	http://www.commscope.com/catalog/enterprise/2147486253/product_details.aspx?id=19284	Only for special situations as noted on the detail drawings
	Fiber Optic Shelf 2U - Sliding	Uniprise	RFE-SLC-IS-EMT-BK/1U-PNL	760147439	http://www.commscope.com/catalog/enterprise/2147486268/product_details.aspx?id=32886	
	Fiber Optic Shelf 1U - Sliding	Uniprise	RFE-SLC-IS-EMT-BK/2U-PNL	7601447447	http://www.commscope.com/catalog/enterprise/2147486268/product_details.aspx?id=32879	
	Wall-Mount Fiber Optic Shelf	Uniprise	WBE-EMT-BK-4P-PNL	760147504	http://www.commscope.com/catalog/enterprise/2147486287/product_details.aspx?id=33135	
	Ganged Adapter w/6 SC 50um Ports SM	Uniprise	PNL-BK-012-MFA-SC02-BL	760027714	http://www.commscope.com/catalog/enterprise/2147486274/product_details.aspx?id=45687	
	SC MM Fiber Connector	Uniprise	MFC-SCR-09-BG	760007070	http://www.commscope.com/catalog/enterprise/2147486284/product.aspx?id=130&sort=null&nrp=null&ShowObsolete=false&filter=1140 3 0 11142 2 0 11119 1 0 	
	SC SM Fiber Connector	Uniprise	SFC-SCR-09-BL	760007112	http://www.commscope.com/catalog/enterprise/2147486274/product_details.aspx?id=21122	
27 15 13	HORIZONTAL CABLING					
	Category 6A Cable, Blue, Non-Plenum	Uniprise	10GN4-BL	8441604/10	http://www.commscope.com/catalog/enterprise/2147486112/product_details.aspx?id=6088	
	Category 6A Cable, Blue, Plenum	Uniprise	10G4-BL	8765404/10	http://www.commscope.com/catalog/enterprise/2147486112/product_details.aspx?id=6087	
	Category 6 cable, Blue, Non-Plenum	Uniprise	65N4+-BL	874801410	http://www.commscope.com/catalog/enterprise/2147486112/product_details.aspx?id=37412	

Pre-Approved Primary Components - Bid Package A

Lincoln Public Schools - Security Technology Ready Classroom Facilities Projects

Schools: _____

Submittal Date: _____

General Contractor: _____

Communications Sub-Contractor: _____

Bid Package No.: _____

Submittal No.: _____

Last Updated: 5/1/2014

	Category 6 cable, Blue, Plenum	Uniprise	6504+-BL	874801410	http://www.commscope.com/catalog/enterprise/2147486112/prouduct_details.aspx?id=37388	
	Category 6 U/UTP filled Cable, outdoor direct burial, black jacket, 4 pair count	CommScope	6NF4+ BLACK	4665904/10	http://www.commscope.com/catalog/enterprise/2147486112/prouduct_details.aspx?id=34214	Only for special situations as noted on the detail drawings
	Category 6 jacks, Gray	Uniprise	UNJ600-GY	CC00208911	http://www.commscope.com/catalog/enterprise/2147486179/prouduct_details.aspx?id=2957	
	Category 6A jacks, Blue	Uniprise	UNJ10G-BL	76010011	http://www.commscope.com/catalog/enterprise/2147486179/prouduct_details.aspx?id=32946	
	HDMI, Black with RedMere Technology, 15 Ft., Ultra-Slim Series	Monoprice	9891		http://www.monoprice.com/Product?c_id=102&cp_id=10255&cs_id=1025503&p_id=9891&seq=1&format=2	
	HDMI, Black with RedMere Technology, 30 Ft., Slim Series	Monoprice	9170		http://www.monoprice.com/Product?c_id=102&cp_id=10255&cs_id=1025507&p_id=9170&seq=1&format=2	
	HDMI, Black with RedMere Technology, 40 Ft., Slim Series	Monoprice	9171		http://www.monoprice.com/Product?c_id=102&cp_id=10255&cs_id=1025507&p_id=9171&seq=1&format=2	
	Classroom Drop Patch Cord - Cat 6 - Non Plenum, Blue, RJ45 to UNJ600GY (Teachers Desk)	Uniprise	UNC6-S-L-RJ45-UNJ600(GY)-BL-FTxx	UC1B682-1C	http://www.commscope.com/catalog/enterprise/2147486112/prouduct_details.aspx?id=23292	
	Classroom Drop Patch Cord - Cat 6 - Plenum, Blue, RJ45 to UNJ600GY (Teachers Desk)	Uniprise	UNC6-P-RJ45-UNJ600(GY)-BL-FTxx	UC1B682-1C	http://www.commscope.com/catalog/enterprise/2147486112/prouduct_details.aspx?id=23292	Provide 10, 15, 25, 35 and special lengths as needed.
	Classroom Drop Patch Cord - Cat 6 - Plenum, Blue, RJ45 to RJ45 (Projector)	Uniprise	UNC6-P-BL-FTxx	UC1BBC2-0Z	http://www.commscope.com/catalog/enterprise/2147486155/prouduct_details.aspx?id=44912	Provide 10, 15, 25, 35 and special lengths as needed.
	Classroom Drop Patch Cord - Cat 6 - Non-Plenum, Blue, RJ45 to RJ45 (Projector)	Uniprise	UNC6-BL-FTxx	UC1BBB2-0Z	http://www.commscope.com/catalog/enterprise/2147486155/prouduct_details.aspx?id=44903	Provide 10, 15, 25, 35 and special lengths as needed.
	Classroom WAP Patch Cord - Cat 6A - Non Plenum, Blue, RJ45 to RJ45	Uniprise	UNC10G-BL-FTxx	UC1AAA2-0Z	http://www.commscope.com/catalog/enterprise/2147486155/prouduct.aspx?id=82&searchCopperCords=true	Provide 10, 15, 25, 35 and special lengths as needed.
	Classroom WAP Patch Cord - Cat 6A - Plenum, Blue, RJ45 to RJ45	Uniprise	UNC10G-P-BL-FTxx	UC1AAA2-0Z	http://www.commscope.com/catalog/enterprise/2147486155/prouduct_details.aspx?id=44878	Provide 10, 15, 25, 35 and special lengths as needed.
	AV Gear Box - 2' x 2' x 6.5" Deep, flush ventilated door, recessed grid, plenum rated, white finish, lockable door.	Premier Mounts	GB-AVSTOR3		http://www.mounts.com/GB-AVSTOR3	With Cable Suspension accessories and configured as indicated on the detail drawings
		Wiremold Legrand	ECB		http://www.legrand.us/wiremold/wall-ceiling-boxes/evolution-series-ceiling-box/ecb-evolution-ceiling-box.aspx#_U2ENa_IdWqU	With Cable Suspension accessories and configured as indicated on the detail drawings
		Chief	CMS490		http://www.chiefmfg.com/Products/CMS490	With Cable Suspension accessories and configured as indicated on the detail drawings
		Oberon	1074-06-VFLUSH		http://www.oberonwireless.com/WebDocs/Model1074-04-ANT7_Spec_Sheet.pdf	With Cable Suspension accessories and configured as indicated on the detail drawings
	WAP Enclosure - Non-metalic, lockable white finish.	Oberon	1015-00		http://www.oberonwireless.com/WebDocs/Model1015-00_Spec_Sheet.pdf	
	Coaxial Cable RG 6 - Quad Shield - Plenum	Uniprise	2227V BKRL RG6 QD	4100104/10	http://www.commscope.com/catalog/enterprise/2147486141/prouduct_details.aspx?id=25197	Beldon. Mohawk.
	Coaxial Cable RG 6 - Quad Shield Riser	CCT	5214		http://cctcable.com/product-catalog.php?type=25&cat=32&subcat=62&product=64	www.cctcable.com
	Coaxial Cable RG 6 - Quad Shield Plenum	CCT	P5218		http://cctcable.com/product-catalog.php?type=25&cat=32&subcat=33&product=57	www.cctcable.com
	Coaxial Cable RG6 - Riser	Uniprise	5781 BRKL RG6 QD	4220004/10	http://www.commscope.com/catalog/enterprise/2147486140/prouduct_details.aspx?id=34370	Beldon. Mohawk.
	Coaxial Cable RG6 Riser	CCT	5203		http://cctcable.com/product-catalog.php?type=25&cat=32&subcat=62&product=59	www.cctcable.com

Pre-Approved Primary Components - Bid Package A

Lincoln Public Schools - Security Technology Ready Classroom Facilities Projects

Schools: _____

Submittal Date: _____

General Contractor: _____

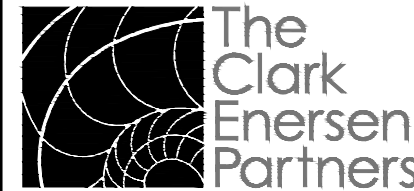
Communications Sub-Contractor: _____

Bid Package No.: _____

Submittal No.: _____

Last Updated: 5/1/2014

		Coaxial Cable RG6 Plenum	CCT	P5203		http://cctcable.com/product-catalog.php?type=25&cat=32&subcat=33&product=56	www.cctcable.com
		Coaxial Cable RG11 - Riser	Uniprise	5916	8203603/10	https://www.anixter.com/content/anixter/north-america/us/en/product-detail.5916-BKRL-RG11-60-1000-COMMSCOPE-UNIPRISE-SOLUTIONS.PG-Coaxial%2BCablng%2BInfrastructure.CS5916.html	Beldon, Mohawk.
		Coaxial Cable RG11 Riser	CCT	5400		http://cctcable.com/product-catalog.php?type=25&cat=63&subcat=65&product=73	www.cctcable.com
		Coaxial Cable RG11 - Plenum	Uniprise	2287V WTRL RG11 QD	4101204	https://www.anixter.com/north-america/us/en/product-detail.2287V-WTRL-RG11-QD-1000-COMMSCOPE-UNIPRISE-SOLUTIONS.PG-Coaxial%2BCablng%2BInfrastructure.CS2287V.html	Beldon, Mohawk.
		Coaxial Cable RG11 Plenum	CCT	P5405		http://cctcable.com/product-catalog.php?type=25&cat=63&subcat=64&product=71	www.cctcable.com
		Coaxial Cable RG6 - F Connector	Belden	SNS1 P6QS	340511	https://www.anixter.com/content/anixter/asia-pacific/asp/en/product-detail.SNS1P6QS-BELDEN.PG-Coaxial%2BCablng%2BInfrastructure.340511.html	Uniprise, Mohawk
		Coaxial Cable RG11 - F Connector	Belden	SNS11AS	523856	https://www.anixter.com/asia-pacific/asp/en/product-detail.SNS11AS-BELDEN.PG-Coaxial%2BCablng%2BInfrastructure.523856.html	Uniprise, Mohawk
		F Connector / Coupler	Uniprise	M81C	108009432	http://www.commscope.com/catalog/enterprise/2147486210/product_details.aspx?id=18790	
27 15 43		FACEPLATES AND CONNECTORS					
		Wall phone plates, stainless steel, 3.25" Mounting Stud Spacing	Uniprise	M10LWSP	760117572	http://www.commscope.com/catalog/enterprise/2147486206/product_details.aspx?id=34861	
		1 port stainless steel faceplates	Uniprise	M11SP	760100867	http://www.commscope.com/catalog/enterprise/2147486206/product_details.aspx?id=32194	
		2 port stainless steel faceplates	Uniprise	M12SP	108615188	http://www.commscope.com/catalog/enterprise/2147486206/product_details.aspx?id=32213	
		4 port stainless steel faceplates	Uniprise	M14SP	108615204	http://www.commscope.com/catalog/enterprise/2147486206/product_details.aspx?id=32213	Systemax, Panduit, Hubbell

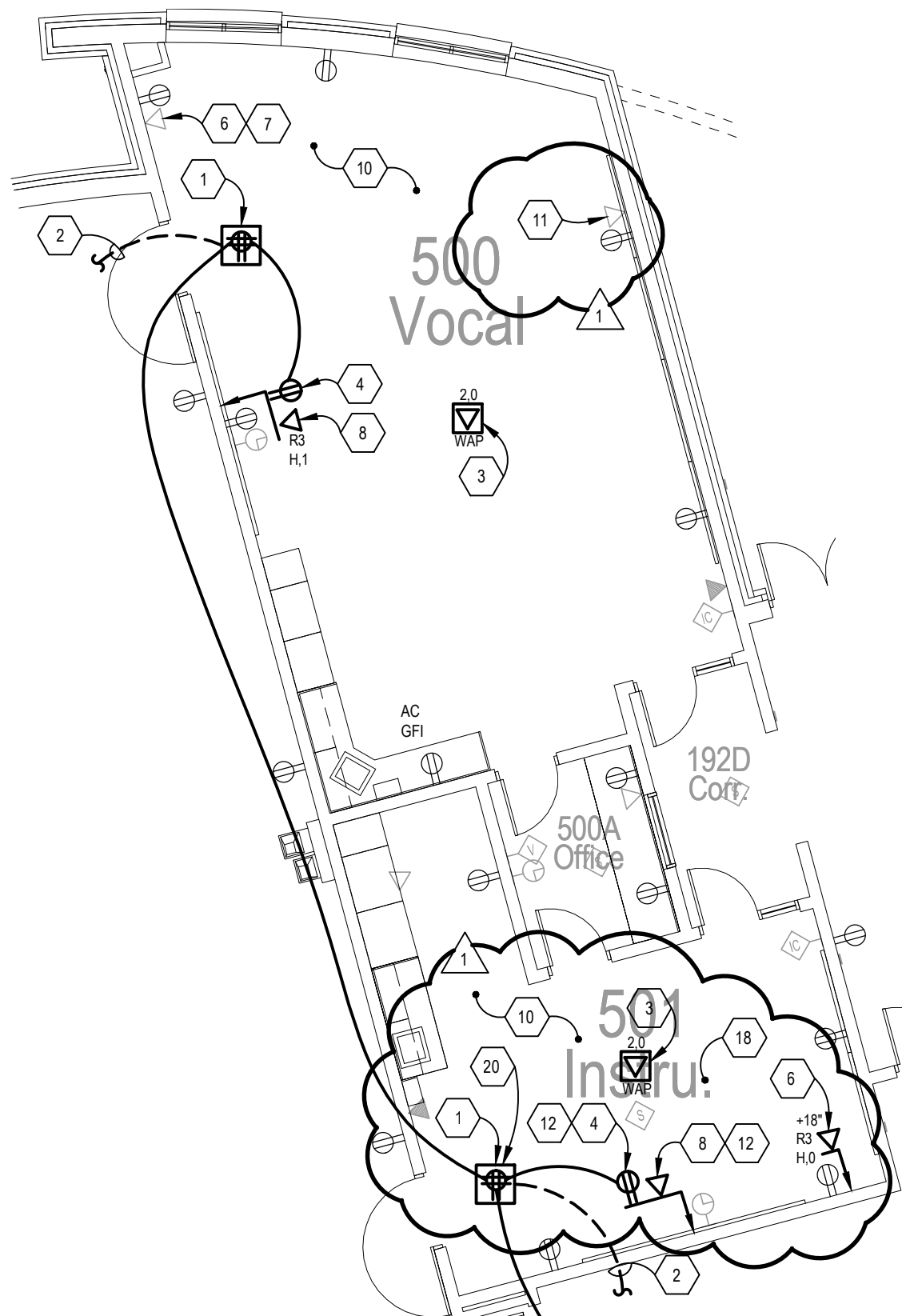


Architecture
Landscape Architecture
Engineering
Interiors

www.clarkenersen.com

Lincoln, Nebraska
1010 Lincoln Mall, Suite 200
Lincoln, NE 68508-2883
402 477.9291 Fax 402 477.6542

Kansas City, Missouri
Fairway, Kansas



ARNOLD ELEMENTARY FIRST FLOOR TELECOMMUNICATIONS PLAN - AREA B

SCALE: 1/8" = 1'-0"

ARNOLD ELEMENTARY FIRST FLOOR TELECOMMUNICATIONS PLAN - AREA B NOTES:

20 ROUTE TWO NEW CATEGORY 6 CABLES FROM THE TELECOM ROOM TO THE A/V GEAR BOX AND TERMINATE TO THE FACEPLATE LOCATED IN THE A/V GEAR BOX.

1

LPS Security & Technology
Project A
Lincoln, NE
TCEP No.: 097-034-14

Addendum #02
Supplemental Drawing: SDT-001
Revision of Sheet: 120.T01.B
Date: May 1, 2014