



ADDENDUM

PROJECT: Lexington PS Career Academy – Armory Remodel
PROJECT NO. L14059
FROM: BVH Architects
DATE: 5-01-2014
TO: All Perspective Bidders
ADDENDUM NO. 1

This Addendum is issued by the Architect to all bidders of record prior to receipt of proposals. Bidders shall acknowledge receipt of this addendum by so indicating on the Proposal Form. Failure to do so may subject Bidder to disqualification.

All information and instructions given herein shall become a part of the Contract Documents.

GENERAL

A Pre-Bid conference was held on site May 1st at 9:00am. The Agenda is attached for reference. Questions and Observations answered include:

1. The project site is available for viewing by contacting and arranging a meeting with the Owner's Project Coordinator, Bo Berry, at 308-324-4681.
2. The project Owner is Lexington Public Schools and therefore sales tax exempt.
3. The Owner's Hazardous Materials Report is available by request.
4. The Contractor is required to provide all required Insurance and Performance Bonding per the Specification Division 0 Bidding and Contract Requirements.
5. All bids shall be sealed and must include a Bid Security per the Specification Division 0 Bidding and Contract Requirements.
6. Available project information indicates the existing concrete slabs to be 5" thick. The existing concrete foundations are indicated to be a 12" concrete foundation wall with a concrete footing 42" below the slab on grade.
7. The new electrical service Main Distribution Panel clearances were discussed. Revised mechanical and electrical drawings are included to meet clearance requirements.

DRAWINGS

1. Site Plan Sheet A1
 - a. Extend the Northeast concrete sidewalk removal and replacement 12' to the West to accommodate the new underground electrical trench.

See attached Mechanical and Electrical Addendum items.

END OF ADDENDUM



LPS CAREER ACADEMY MEETING AGENDA

BVH PROJECT: #L1459

DATE: MAY 1st, 2014

- 1. Project Background**
- 2. Bid Schedule and Procedures**
 - a. May 2nd : Last Day for Addenda**
 - b. May 8th @ 2pm: Bid Date**
 - c. Stipulated Sum with Multiple Contracts**
 - i. Lowest Responsible Bidder**
 - d. Bo Berry, LPS Facilities Manager / Project Coordinator**
- 3. Working Conditions**
 - a. Concrete**
 - b. Gypsum Board Assemblies**
 - c. Resilient Flooring**
 - d. Fire Suppression**
 - e. Mechanical / Plumbing / HVAC**
 - f. Electrical / Fire Alarm Security System**
- 4. Post-Bid Schedule**
 - a. May 12th : School Board Bid Approval**
 - b. May 19th : Notice of Award / Proceed**
 - c. August 8th : Substantial Completion**
- 5. Questions and Observations**



DATE ISSUED May 1, 2014

ADDENDUM # 1

ENGINEER Engineering Technologies, Inc.
825 M Street, Suite 200
Lincoln, NE 68508

PROJECT Lexington Public Schools Career Academy -
Phase 1 - Lexington, NE

ETI PROJECT # 2014-039

The Architect issues this Addendum to all known bidders before receipt of proposals. Bidder shall acknowledge the receipt of this addendum on their proposal sheet and all information contained herein shall become a part of the contract documents.

ADDENDUM:

PRIOR APPROVAL - MECHANICAL

- 1. The following manufacturers have received prior approval for bidding purposes subject to shop drawing review:
A. List Equipment Here Registers, Grilles & Diffusers Exhaust Fans Roof Hoods Exhaust Tubes & Ports Gas Detection System
List Manufacturer Here Price Industries, Krueger ACME, Loren Cook, Twin City Fan Co. ACME, Loren Cook, Twin City Fan Co. Ventaire, Car-Mon Armstrong Monitoring, ACME

DRAWINGS - MECHANICAL

- 1. Sheet M1.1 First Floor - Mechanical Demolition
A. See sheet M1.1-attachment #1 for changes to the gas piping to be demo'd.
B. See sheet M1.1-attachment #1 for boiler combustion air system to be relocated.
C. See sheet M1.1-attachment #1 for added sheet note #12.
D. See sheet M1.1-attachment #2 for additional area to be included in the enlarged mechanical plan area.
2. Sheet M2.1 First Floor - Mechanical
A. See sheet M2.1-attachment #1 for changes of routing to the new gas piping.
B. See sheet M2.1-attachment #1 for new location of existing boiler combustion air system.
C. See sheet M2.1-attachment #1 for changes to sheet note #1.
D. See sheet M2.1-attachment #1 for added sheet notes #22 & #23.

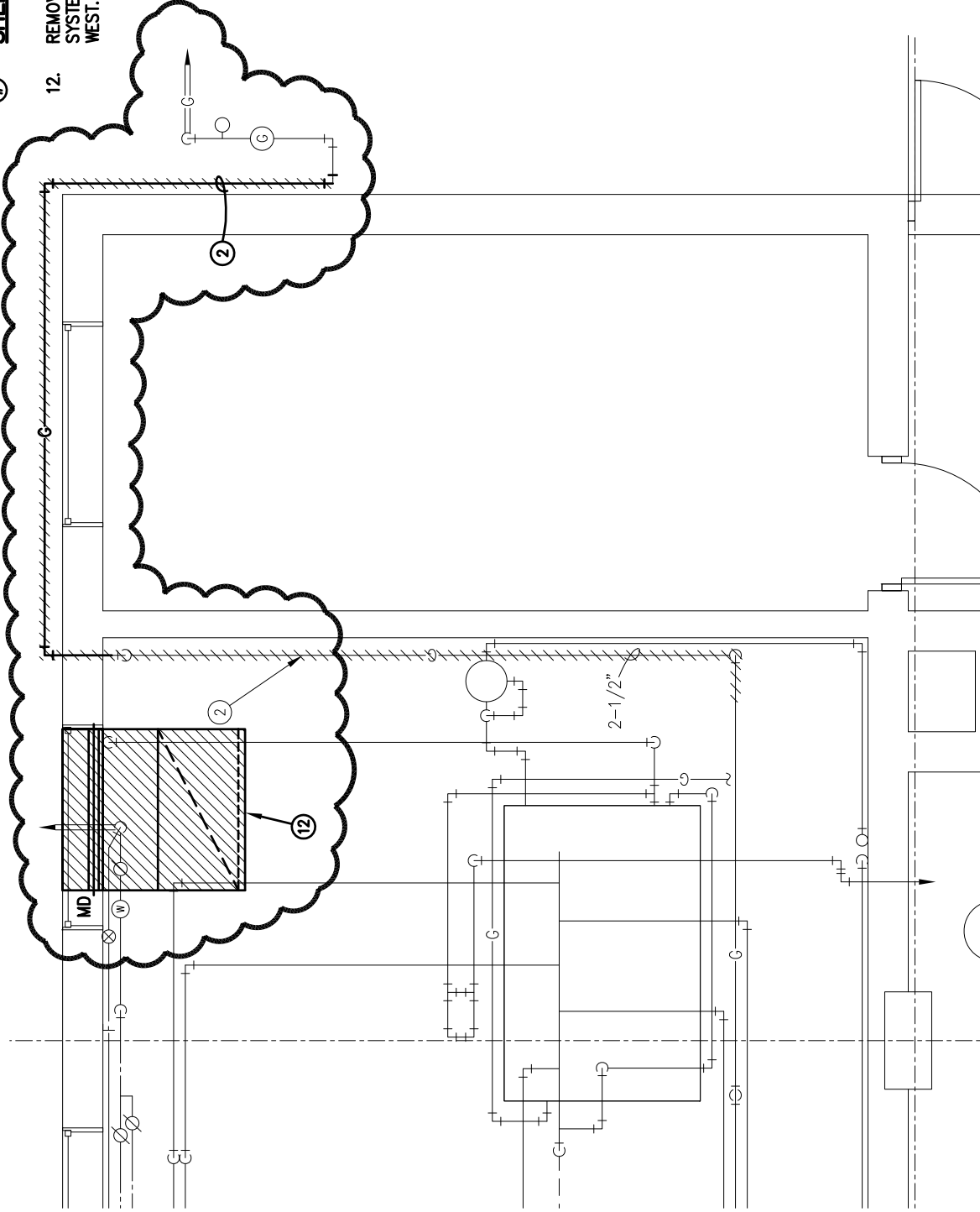
GENERAL ITEMS - ELECTRICAL



- 1. Electrical contractor shall reference Sheet M2.1-attachment #2 to extend electrical circuit for combustion air motorized damper being relocated.

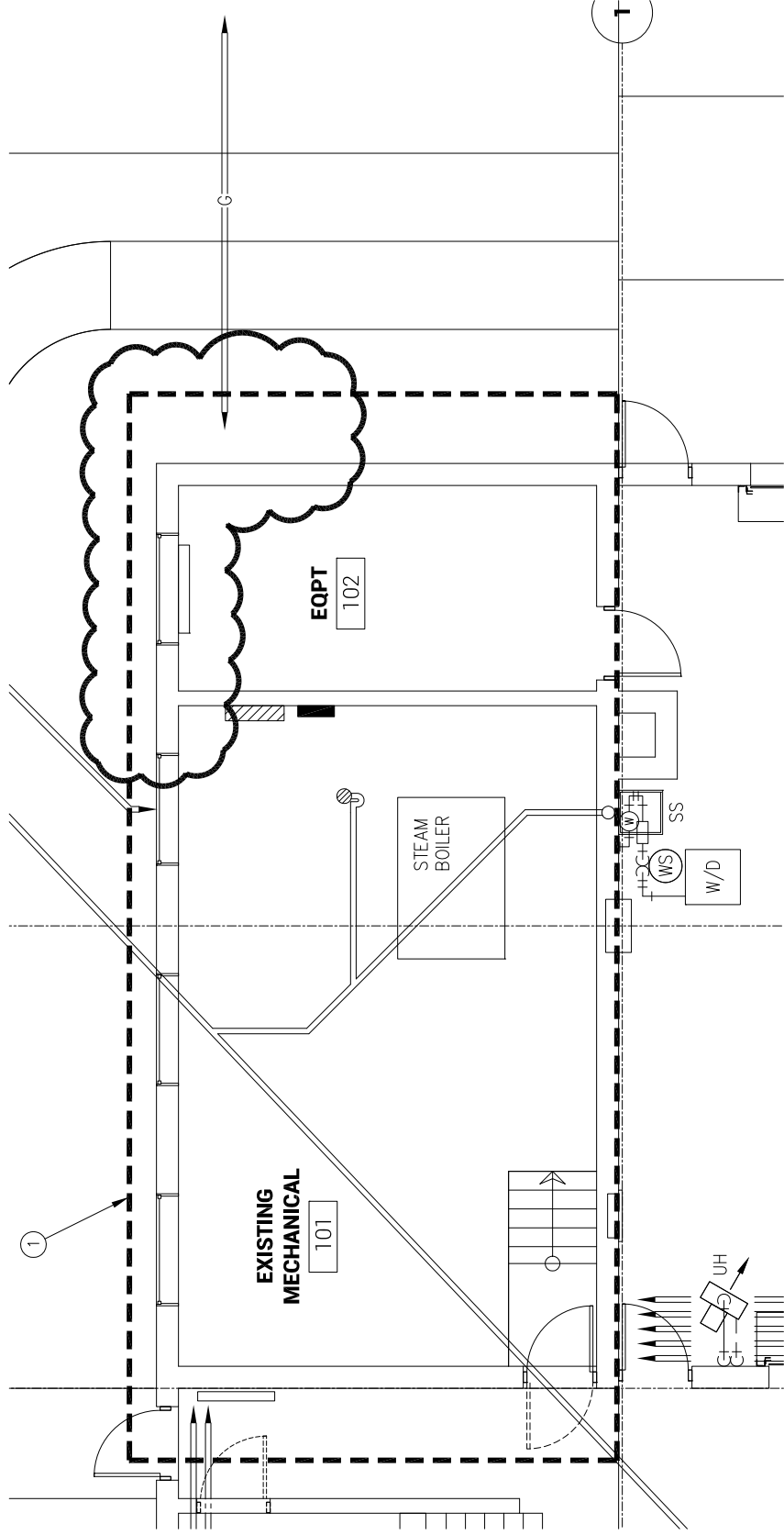
END OF ADDENDUM

SHEET NOTES

12. REMOVE BOILER COMBUSTION AIR SYSTEM FROM WINDOW SYSTEM TO BE RELOCATED TO WINDOW DIRECTLY TO THE WEST. SEE SHEET M2.1 FOR NEW LOCATION.

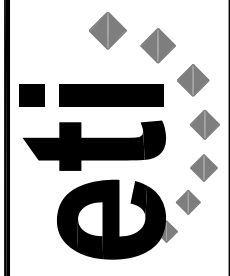


		Engineering Technologies Inc. Mechanical & Electrical Building Solutions		ADDENDUM #1
		825 M Street, Suite 200 Lincoln, NE 68508 P 402.476.1273 F 402.476.1274 1111 N. 13th Street, Suite 216 Omaha, NE 68102 P 402.330.2772 F 402.330.2630 ETI Project No: 2014-039		SHEET M1.1
LEXINGTON PUBLIC SCHOOLS CAREER ACADEMY FIRST FLOOR - MECH DEMO				ATTACHMENT NO. 1
SCALE: 1/4" = 1'-0"		NJS		5/1/14



ADDENDUM #1
SHEET
M1.1
ATTACHMENT NO.
2
5/1/14

Engineering Technologies Inc.
 Mechanical & Electrical Building Solutions
 825 M Street, Suite 200 | Lincoln, NE 68508
 P 402.476.1273 | F 402.476.1274
 1111 N. 13th Street, Suite 216 | Omaha, NE
 68102 | P 402.330.2772 | F 402.330.2630
 ETI Project No: 2014-039



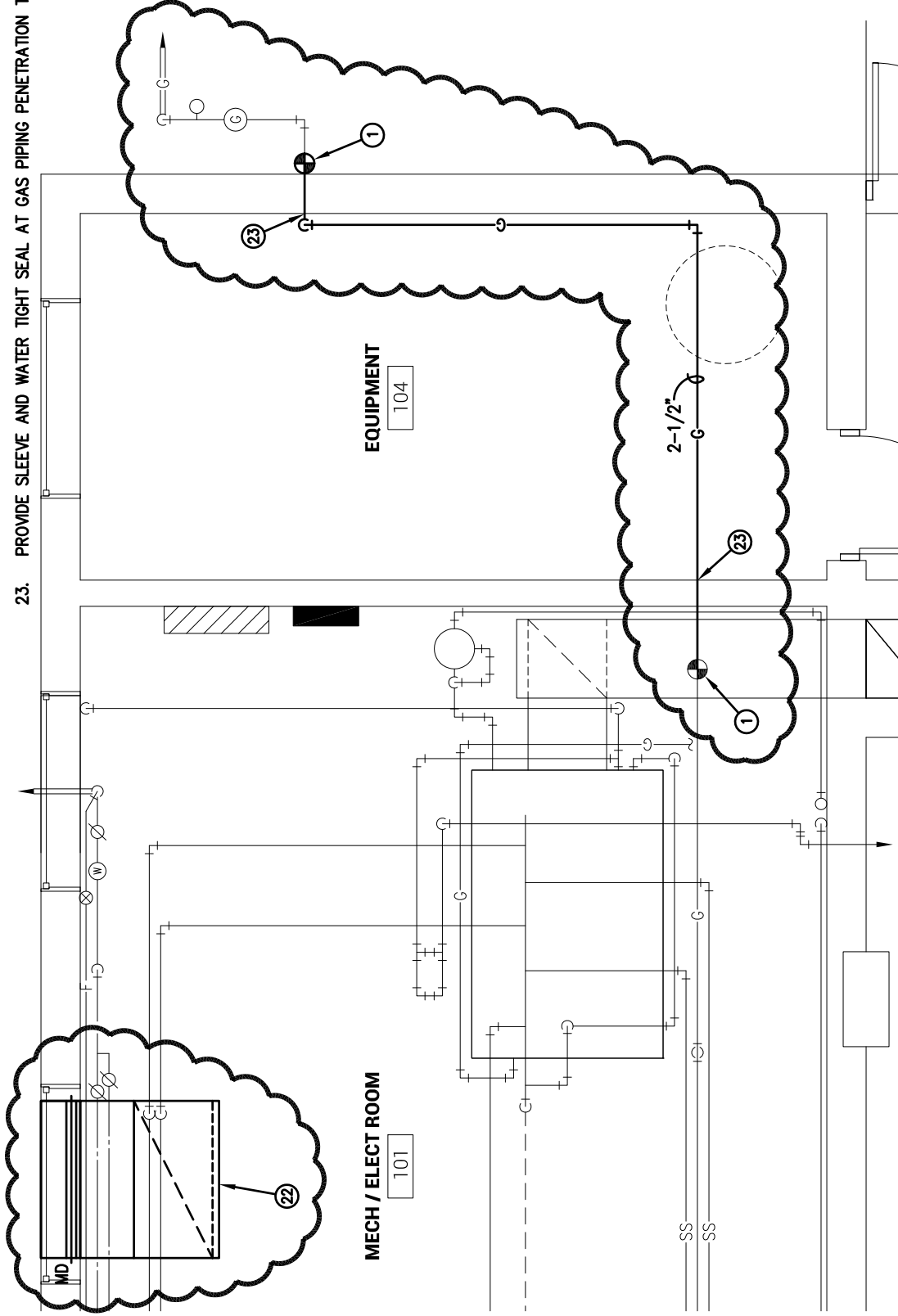
LEXINGTON PUBLIC SCHOOLS
CAREER ACADEMY
FIRST FLOOR - MECH DEMO

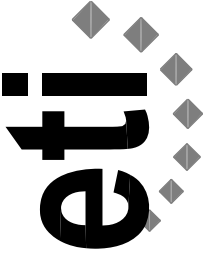

NJS

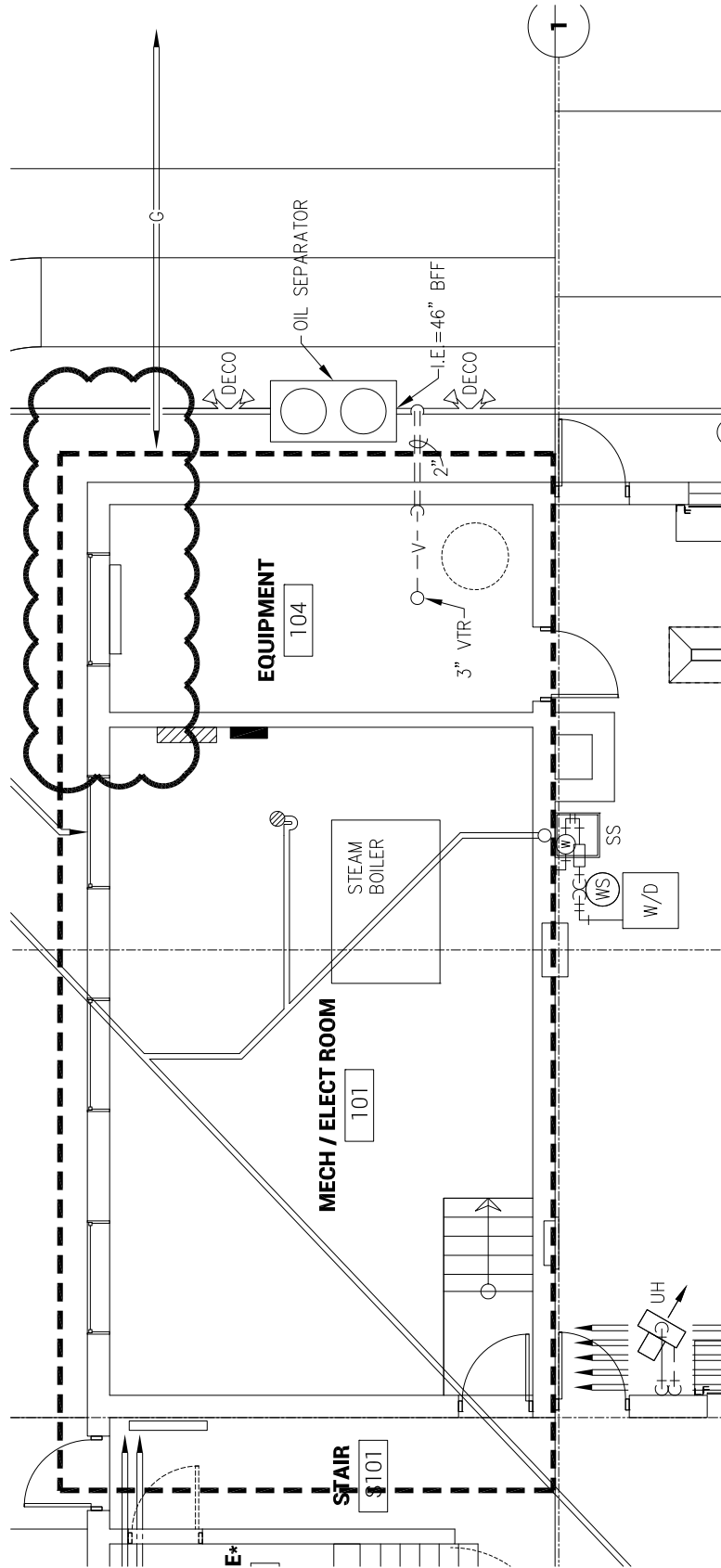
SCALE: 1/4" = 1'-0"

SHEET NOTES

1. REROUTE NEW 2-1/2" GAS PIPING AS SHOWN.
22. RELOCATE COMBUSTION AIR SYSTEM TO HERE. THIS INCLUDES INTAKE LOUVER, MOTORIZED DAMPER, DUCTWORK AND CONTROLS. EXTEND CONTROLS AND ELECTRICAL AS REQUIRED. MOTORIZED DAMPER SHALL BE INTERLOCKED WITH BOILER OPERATION.
23. PROVIDE SLEEVE AND WATER TIGHT SEAL AT GAS PIPING PENETRATION THROUGH WALL.

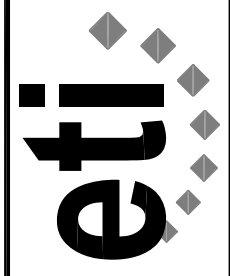


	<p>Engineering Technologies Inc. Mechanical & Electrical Building Solutions 825 M Street, Suite 200 Lincoln, NE 68508 P 402.476.1273 F 402.476.1274 1111 N. 13th Street, Suite 216 Omaha, NE 68102 P 402.330.2772 F 402.330.2630 ETI Project No: 2014-039</p>								
	<p style="text-align: center;">LEXINGTON PUBLIC SCHOOLS CAREER ACADEMY FIRST FLOOR - MECHANICAL</p>								
	<p style="text-align: right;">SCALE: 1/4" = 1'-0"</p>								
	<table border="1" style="width: 100%; border-collapse: collapse;"> <tr> <td style="width: 50%; text-align: center;">ADDENDUM #1</td> <td style="width: 50%;"></td> </tr> <tr> <td style="text-align: center;">SHEET</td> <td style="text-align: center;">M2.1</td> </tr> <tr> <td style="text-align: center;">ATTACHMENT NO.</td> <td style="text-align: center;">1</td> </tr> <tr> <td style="text-align: center;">DATE</td> <td style="text-align: center;">5/1/14</td> </tr> </table>	ADDENDUM #1		SHEET	M2.1	ATTACHMENT NO.	1	DATE	5/1/14
ADDENDUM #1									
SHEET	M2.1								
ATTACHMENT NO.	1								
DATE	5/1/14								



ADDENDUM #1
SHEET
M2.1
ATTACHMENT NO.
2
5/1/14

Engineering Technologies Inc.
 Mechanical & Electrical Building Solutions
 825 M Street, Suite 200 | Lincoln, NE 68508
 P 402.476.1273 | F 402.476.1274
 1111 N. 13th Street, Suite 216 | Omaha, NE
 68102 | P 402.330.2772 | F 402.330.2630
 ETI Project No: 2014-039



LEXINGTON PUBLIC SCHOOLS
CAREER ACADEMY
FIRST FLOOR - MECHANICAL

SCALE: 1/4" = 1'-0"

NUS