

ADDENDUM NO. 3

PROJECT NAME: NE Soccer & Tennis Complex-General Construction
UNL PROJECT NUMBER: C909P101/ 10186
BID INVITATION NUMBER: 2339-14-7200

CONSULTANT: RDG Planning & Design
ADDRESS: 301 Grand Avenue
Des Moines, IA 50309

DATE OF ISSUANCE: April 4, 2014
DATE OF BID OPENING: Tuesday, April 8, 2014
3:00 PM CT

The bid documents, plans dated 3/7/14 and project manual dated 3/7/14, for the above referenced project are amended by this addendum.

NOTICE: This Addendum is issued to all interested prospective bidders as an amendment to the project manual or other parts of the bidding (contract) documents for the above named project. Reference to this Addendum must be included in the Bid proposal. The information contained herein shall be fully incorporated into the contract documents as though originally included therein.

PRE-BID QUESTIONS

The following Pre-Bid questions have been asked. Responses are noted in bold print.

- 3PB-1 What chain link site fencing is to be black PVC? **Response: Per DRAWING L2.01 – L2.03, all chain link fencing is to be black PVC.**
- 3PB-2 Are there differences in the 8' chain link fencing that is around outdoor tennis vs. the 8' chain link fencing that is around the soccer field perimeter? **Response: Refer to Structural's Post Footing Schedule on Sheet S6.01 for all chain link fence footings. The 8' chain link fencing that is not scheduled to include windscreens is designed for the possibility that windscreens may be added to the fencing in the future.**
- 3PB-3 What are the connection requirements for the Decorative Metal Fence on the west side of the Grandstand? **Response: See clarifications issued in this Addendum.**

CHANGES TO PREVIOUS ADDENDA

Structural Drawing Items

- 3GA-1 (Addendum 2, Items GD2-13 and GD2-16) DRAWINGS S3.12, S7.13: See description of changes below.

Architectural Drawing Items

- 3GA-2 (Addendum 2, Item 2GD-48) DRAWING A3.6: See description of changes below.

ADDENDA TO THE PROJECT MANUAL

Architectural Specification Items

3GS-1 SECTION 13 34 19 – METAL BUILDING SYSTEMS

A. 2.1, A: Subject to compliance with specifications, add paragraph 8 approved manufacturer:

8. A&S Building Systems.

Landscape Specification Items

3GS-2 SECTION 31 20 00 - EARTH MOVING

A. Change Section 2.1, Paragraph E, 1:

1. CHANGE to the following: "Recycled, crushed concrete furnished by UNL; Contractor responsible for pickup and delivery to the job site from UNL stockpile."

3GS-3 SECTION 32 31 13 – CHAIN LINK FENCES AND GATES

A. Change Section 2.1, Paragraph B.

1. ADD the following sentence: "Provide 1 ¾ inch diamond mesh for all chain link fencing around the outdoor tennis court."

B. Change Section 2.4, Paragraph A.

1. ADD 6' to the 8' and 10' Fence line items.

C. Change Section 2.4, Paragraph A, 3:

1. Revise to read as follows: "Concrete footings for fencing with and without windscreen: Refer to structural Post Footing Schedule on Sheet S6.01."

D. Change Section 2.4, Paragraph B, 3:

1. Revise to read as follows: "Concrete footings for fencing with and without windscreen: "Refer to structural Post Footing Schedule on Sheet S6.01."

3GS-4 SECTION 32 31 19 - DECORATIVE METAL FENCES

A. Change Section 2.1, Paragraph A:

1. Revise to read, "Ameristar Montage Industrial" in lieu of Ameristar Montage II.

B. Change Section 2.2, Paragraph B.

1. Revise to read "1" square x 16 gage" in lieu of 14 gage.

ADDENDA TO THE DRAWINGS

Landscape Drawing Items

3GD-1 DRAWING L5.01

A. Change Detail L5.01: Revise the vertical footing dimension to read: "SEE STRUCTURAL FOR FOOTING DEPTH", in lieu of 4'-0" depth. Revise the horizontal dimension to read: "SEE STRUCTURAL FOR FOOTING DIAMETER" in lieu of 8" R.

Structural Drawing Items

3GD-2 DRAWING S0.01

A. GENERAL STRUCTURAL NOTES, SECTION 7:

1. Adds the following sentence to the end of this section:
"Special inspections shall be procured and paid for directly by the Owner."

B. CAST-IN-PLACE CONCRETE WORK, NOTE 5.C:

1. Modifies Item (1) to read:
Thickness: At Support Building: 5" Minimum
At Indoor Tennis and all other areas: 4" Minimum.

C. CAST-IN-PLACE CONCRETE WORK, NOTE 5.G:

1. Modifies note to read: "Granular material beneath vapor barrier shall be approved by the Geotechnical Engineer. Crushed recycled concrete (Aggregate Type "A" per specification section 032000) is an acceptable granular material."

D. CAST-IN-PLACE CONCRETE WORK, NOTE 6.G:

1. Modifies note to read: "Granular material beneath vapor barrier shall be approved by the Geotechnical Engineer. Crushed recycled concrete (Aggregate Type "A" per specification section 032000) is an acceptable granular material."

3GD-3 DRAWING S3.12

A. Framing Plan – Outdoor Tennis.

1. Modifies (3) 2x10 joists (running North-South on all primary grid lines spanning between grid lines TA –TC and between grid lines TC – TE) to (1) 5.25"x11.25" Power-Preserved Glulam Beam by Anthony Forest Products Co. that runs continuously from gridline TA to TE.
2. Modifies the continuous 5.25"x14" glulam beam along gridline TC to be a simple span condition (spanning between the 5.25"x11.25" glulam beams running in the N-S direction at every gridline).

3GD-4 DRAWING S6.01:

A. Revises Post Footing Schedule per attached drawing AD3-S01.

3GD-5 DRAWING S7.13

- A. Revises detail 1 per attached drawing AD3-S02.
- B. Revises detail 2 per attached drawing AD3-S03.
- C. Deletes detail 3.

Architectural Drawing Items

3GD-6 DRAWING A2.51 - Drawings A3 and B3:

- A. Add typical note at Decorative Fencing horizontal rails: "PROVIDE FENCING MANUFACTURER'S PREFINISHED BRACKET ANCHORED TO PRECAST CONCRETE TYPICAL. ANCHOR WITH (1)- 3/8" DIAMETER HILTI SSSL KWIK-BOLT 3 ANCHORS WITH 3" EMBEDMENT DEPTH."

- B. Add typical note at Decorative Fencing post: "POST WITH BASE PLATE BY FENCE MANUFACTURER. BASEPLATE 5" X 8" X 3/8" (LONG DIMENSION PARALLEL TO CONCRETE WALL). ANCHOR WITH (2)- 5/8" DIAMETER HILTI SSTL KWIK-BOLT 3 ANCHORS WITH 4" EMBEDMENT DEPTH (ONE ANCHOR EACH SIDE OF POST, CENTERED ON THE CONCRETE WALL)."
- C. Add typical note at Decorative Fencing panels: "TWO FENCE POSTS, 6'-0" APART- CENTER IN EACH OPENING."
- D. Show Decorative Fencing posts and pickets to match basis-of-design product as noted in this addendum under 33 31 19 – DECORATIVE METAL FENCES.

3GD-7 DRAWING A3.61

- A. Drawings A1, A3, A5, B1, B3, C3, C5, E5: Revise framing shown to match structural changes issued in Addendum 3 for Drawings S3.12 and S7.13.

Technology Drawing Items

3TD-1 DRAWING T0.10 – SITE PLAN – TELECOM:

- A. Add the following flag note at the location for the auxiliary soccer clock centered on the soccer field in front of the soccer grand stands: "PROVIDE 3/4" CONDUIT TO STORAGE 266 FOR AUXILIARY CLOCK LOW-VOLTAGE CABLE."

End of Addendum No. 3

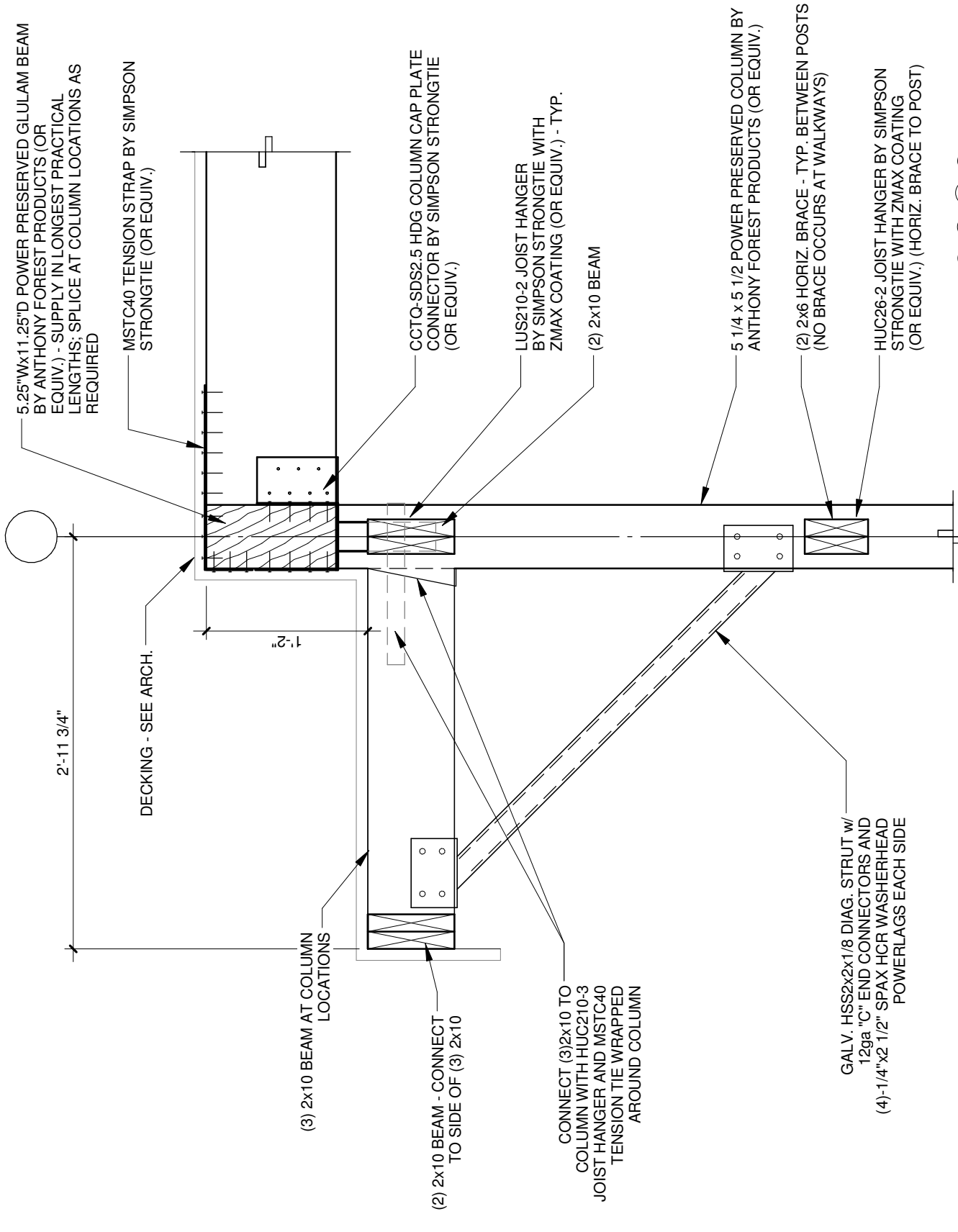
POST FOOTING SCHEDULE

MARK	DIAMETER	DEPTH (BELOW GRADE)	HEIGHT (ABOVE GRADE)	VERTICAL REINFORCEMENT	TIES	NOTES
PF-1	2'-0"	8'-0"	3'-0"	(6) #6's	#3's at 12"	- PARKING LOT LIGHTING - SEE CIVIL AND ELECTRICAL
PF-2 (NOT USED)	-	0"	0'-0"	-	-	-
PF-3	2'-0"	8'-0"	3'-0"	(6) #6's	#3's at 12"	- PEDESTRIAN LIGHTING - SEE LANDSCAPE AND ELECTRICAL
PF-4A	2'-0"	7'-0"	-1'-2"	(6) #6's	#3's at 12"	- 8'-0" AND 10'-0" TALL FENCING AT POST-TENSIONED TENNIS COURT - SEE LANDSCAPE
PF-4B	2'-0"	6'-0"	0'-0"	(6) #6's	#3's at 12"	- 8'-0" AND 10'-0" TALL FENCING - SEE LANDSCAPE
PF-5	VARIES - SEE 11/S7.01		-0'-8"	(4) #4's	#3's at 12"	- TENNIS NET POST (SEE 11/S7.01)
PF-6	1'-0"	2'-8"	-0'-8"	NONE	NONE	- TENNIS NET CENTER ANCHOR (SEE 12/S7.01)
PF-7 (NOT USED)	-	0"	0'-0"	-	-	-
PF-8 (NOT USED)	-	0"	0'-0"	-	-	-
PF-9 (NOT USED)	-	0"	0'-0"	-	-	-
PF-10	3'-0"	4'-0"	-0'-8"	(10) #7's	#3's at 12"	- OUTDOOR TENNIS STRUCTURE POST
PF-11	2'-0"	6'-0"	0'-0"	(6) #6's	#3's at 12"	- 35'-0" FLAGPOLE - SEE LANDSCAPE
PF-12	2'-0"	6'-0"	0'-0"	(6) #6's	#3's at 12"	- 45'-0" FLAGPOLE - SEE LANDSCAPE
PF-13	2'-0"	7'-0"	0'-0"	(6) #6's	#3's at 12"	- SOCCER BARRIER NETTED FENCING - SEE LANDSCAPE
PF-14A	1'-4"	4'-0"	-1'-2"	NONE	NONE	- 42" TALL FENCING AT POST-TENSIONED TENNIS COURT - SEE LANDSCAPE
PF-14B	1'-4"	4'-0"	0'-0"	NONE	NONE	- 42" TALL FENCING - SEE LANDSCAPE
PF-15	2'-0"	5'-0"	-1'-2"	(6) #6's	#3's at 12"	- 6'-0" TALL FENCING AT POST-TENSIONED TENNIS COURT - SEE LANDSCAPE

POST FOOTING SCHEDULE NOTES:

1. FENCING POSTS SHALL BE EMBEDDED INTO POST FOOTING. FENCE POST SHALL END APPROX. 6" - 12" ABOVE BOTTOM OF FOOTING.
2. FOUNDATIONS FOR EMERGENCY BLUE PHONES ARE BY OTHERS.
3. FOUNDATIONS FOR SPORTS LIGHTING N.I.C. - DESIGNED AND PROVIDED BY LIGHTING MFR./SUPPLIER
4. SEE L2.01 & L2.02 FOR LOCATION OF SITE ELEMENTS NOT SHOWN ON STRUCTURAL DRAWINGS.

SEE 1/S6.01 FOR TYPICAL POST FOOTING DETAIL.

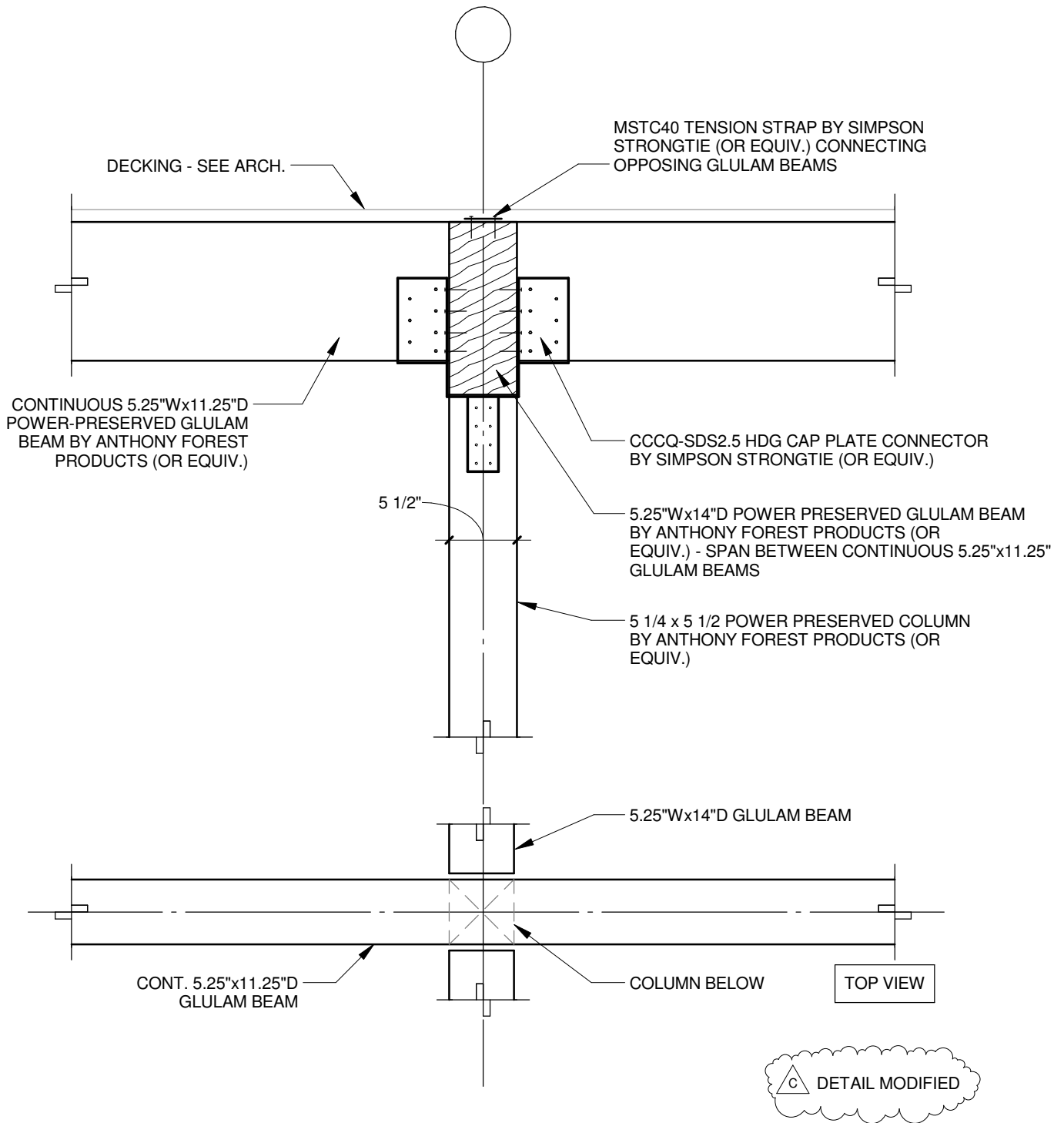


△ DETAIL MODIFIED

WOOD CONNECTION DETAIL

1

1" = 1'-0"



2 WOOD CONNECTION DETAIL

1" = 1'-0"