



BIDDERS BULLETIN

PROJECT: Perkins County School Addition
Grant, Nebraska

BULLETIN NUMBER

BB-3

ISSUED BY:

Stephen Granger

PROJECT #: 12-0915

DATE ISSUED: April 4th, 2014

This bulletin is issued by the Architect to all known bidders before receipt of proposals, for the purpose of explaining, interpreting, or modifying the original plans and specifications. When enumerated by the bidder upon the proposal sheet, the information or instructions given hereon will be equally binding upon all parties as if included in the original plans and specifications.
BIDDER MUST ENTER THE NUMBER OF THIS BULLETIN ON HIS PROPOSAL SHEET

Additional Vender Approval

Section 09250 Gypsum Drywall; NU-AGE Films Polyethylene Vapor Retarder 6/10 is an approved additional vender.

Section 09653 Wood Gymnasium Flooring; Acer Channel VLP-HC is an approved additional vender.

Section 09653 Wood Gymnasium Flooring; Horner Flooring Company, Inc, CRP Controlled Response Performance is an approved additional vender.

Section 10540 Athletic Equipment; Sport Construction Midwest, Performance Sports System as an approved additional vender.

Project Clarification

Please note that all plumbing lines running through walls, both new and existing to be insulated through the wall as noted below.

- Domestic CW=1"
- Domestic HW/recirc: Pipe 1.5" and smaller=1", pipe 2" and larger=1.5"
- Storm/overflow=1"
- Condensate=0.5"
- Refrigerant=1"

THE FOLLOWING ITEMS ARE APPLICABLE TO THE SPECIFICATIONS

BB-3, ITEM #1: Wood Gymnasium Flooring 09653

Change thickness of gym flooring from 16/32" to 25/32".

BB-3, ITEM #2: Hardware 8700

Doors B100a and Doors A117; add to each pair of double doors a Rixson 0600 Smok-Chek V Series Non-Detected Closer/Holder. Install a hold open closer on each door. Provide all electrical requirements for hold open features and tie to the fire alarm system. Each closer will be on the pull side, with the hold open unit attached to the frame of the door. Do not grout top of frame to allow for electrical connection. Doors to be a minimum 20 minute label with appropriate smoke seals.

BB-3, ITEM #3: FRP 09772

Additional Specification Section added to project. Attached at end of BB-3

BB-3, ITEM #4: Lockers 10500

Provide standard 16 guage metal bases as supplied by locker manufacturer. Height to be 4", color to match color of lockers, install overhang on front side of lockers only. These are the lockers located on the second floor **Corridor A213** and **Corridor A215**. **Refer/Coach B104** locker base to match the base in standard locker rooms **D10-A603**

BB-3, ITEM #5: Polymer Resin Toilet Partitions 10164

Specification indicated incorrect room locations for Polymer Resin Toilet Partitions. Locations of Partitions to be in the following rooms: Locker Room B105, Referee/Coach B104, Locker Room B106, Women A118, Men A117, Girls A205 and Boys A206. Locker Room shower stalls are also Polymer Resin Partitions. All items to be bid, this is not an alternate as indicated in the specifications.

BB-3, ITEM #6: Specialty Signs 10440

Add to the specialty signs specifications to following: ASI Sign Systems (or approved equal) Dimensional Letters, LPL Series Cut Laminate Letters, brushed aluminum finish, 12" tall by 1/4", font to be selected and approved by owner, application to be full coverage tape mounted, return edges to be black. All lettering to be upper case. Refer to Sheet A601 for letter locations. Letters to state the following: CONCESSION KITCHEN GYMNASIUM

Exterior Signage at front entry to be added to the project. Exterior letter above new entry to be ASI Sign Systems (or approved equal) LPS Series Cut Metal Signs for exterior use. Finish to be aluminum, letters to be 12" tall by 1/8" thick, font to selected and approved by owner. Installation to be both stud and foam tape application. All lettering to be upper case and should read as follows: PERKINS COUNTY SCHOOL

BB-3, ITEM #7: Cabinet and Storage Casework 12400

Add to the specifications the following: LSI Extractor Series I ADA Design Exhaust hood system. Refer to attached Specifications. Other cabinets in the science classroom to be supplied by owner.

BB-3, ITEM #8: Athletic Equipment 10540

Draper EZ Fold TF-20J-B to be supplied with Posilok Safety Belt as part of the complete system.

Basketball Goals to be 503576 Breakaway Goals at each back stop.

Wall Pads; Color to be selected from standard color options. Logo on wall pads to match center court logo as well as the mascot on the left side of the pads.

Divider Curtain colors will also be selected from the standard color options.

BB-3, ITEM #9: Wet Pipe Fire Sprinkler System 21 1313

- 1.) Flex heads are optional.
- 2.) Standard weight is Schedule 40. ASTM A135 is acceptable

THE FOLLOWING ITEMS ARE APPLICABLE TO THE DRAWINGS

BB-3, ITEM #10: Sheet A402 and A403

Refer to the attached 8-1/2 x 11" drawings; S7/A402; S8/A402; S8b/A402; S10/A402; S11/A403 for modification request in reference to the metal building. Please note that the girts on the east and west end of the gymnasium have been moved to an inset girt location. Girt location extends 1" past frame line. This has affected the details as listed above.

BB-3, ITEM #11: Sheet A601 E2/A601 and E3/A601

Counter tops indicated on the elevations are to be Stainless Steel.

Refer to sheet A802 for Laminate window sills. Laminated window sills to be located in W1 and W4. Windows W2, W3 and W5 to be a full thickness hollow metal window frame. Refer to wall type for thickness.

BB-3, ITEM #12: Sheet E201a and Sheet E201b

Equipment list for sound equipment in Gym Area.

QTY	STOCK #	DESCRIPTION	DIST
1	CAM8PRO	8 CHANNEL MIXER	BOGEN
1	X600	DUAL CHANNEL AMPLIFIER	BOGEN
2	SAXIR	STEREO AUX INPUT MODULES	BOGEN
1	UDMS800HH	HAND HELD WIRELESS MICROPHONE SYSTEM	BOGEN
1	HDU150	HAND HELD MICROPHONE	BOGEN
1	DDU250	DESK MICROPHONE	BOGEN
1	CD-200SB	TASCAM CD PLAYER WITH SD AND USB	FULLCOMPASS
1	GL36WMM	GREAT LAKES WALL RACK 19RU MESH DOOR	CRESENT
2	MIC50	50 FOOT XLR-XLR CABLE (PROCO OR WHIRLWIND)	FULLCOMPASS
4	AMT15	300 WATT LOUDSPEAKER	BOGEN
4	109-2151	AMT HANGING YOKE	BOGEN
4	109-2140	AMT RIGGING BEAM	BOGEN

BB-3, ITEM #13: SES Bid Bulletin Items

Mechanical Specification Items: See Attached

Electrical Drawing Items: See Attached

END OF BB-3

TITLE

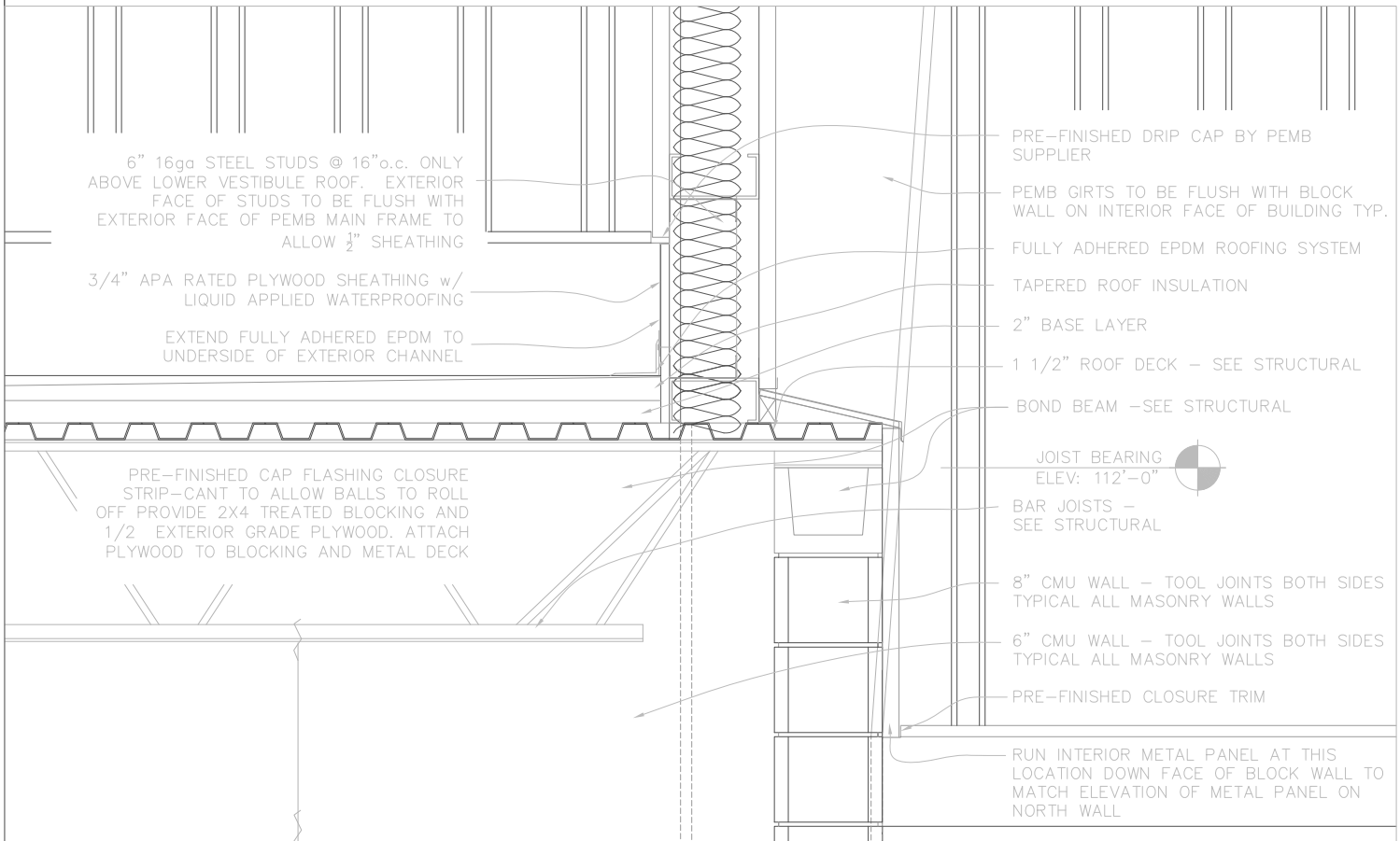
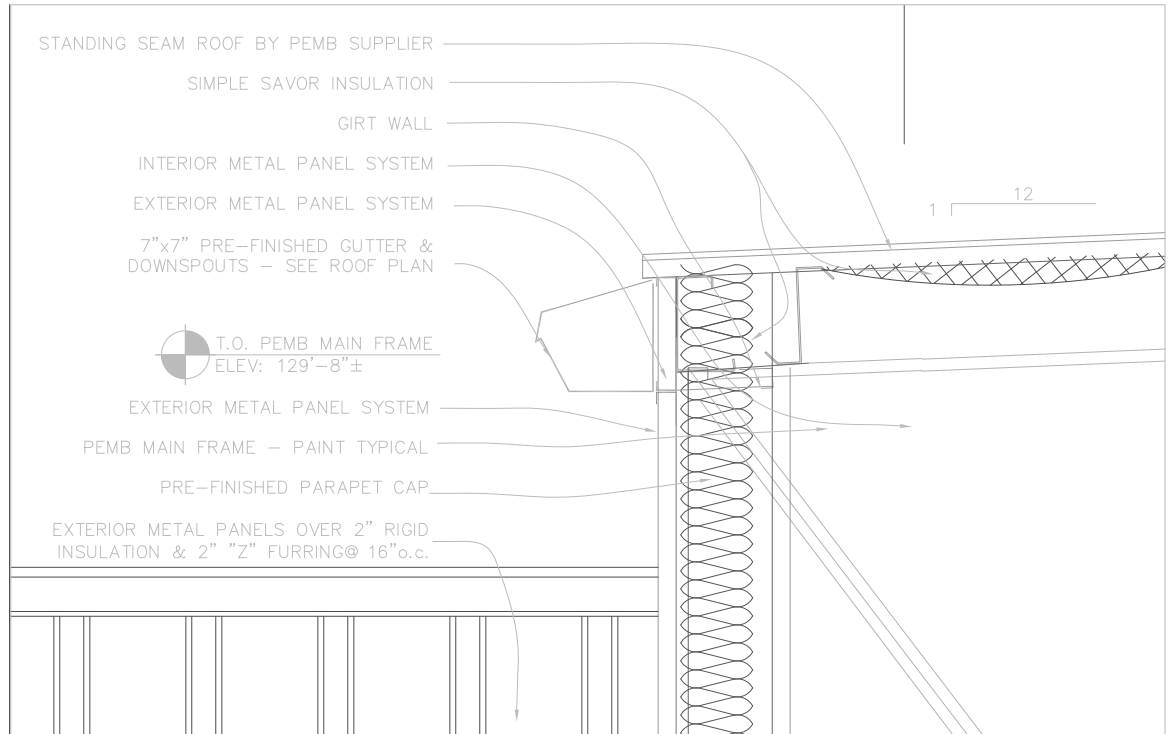
Wall Sections
S-7/A402
BB-3

PROJECT

Perkins County Schools

Date: 4-3-14
Drawing: Wall Sections
From Sheet: A402

CG-Architects
319 East Francis Street
North Platte, NE 69101



TITLE

Wall Sections
S-8/A402
BB-3

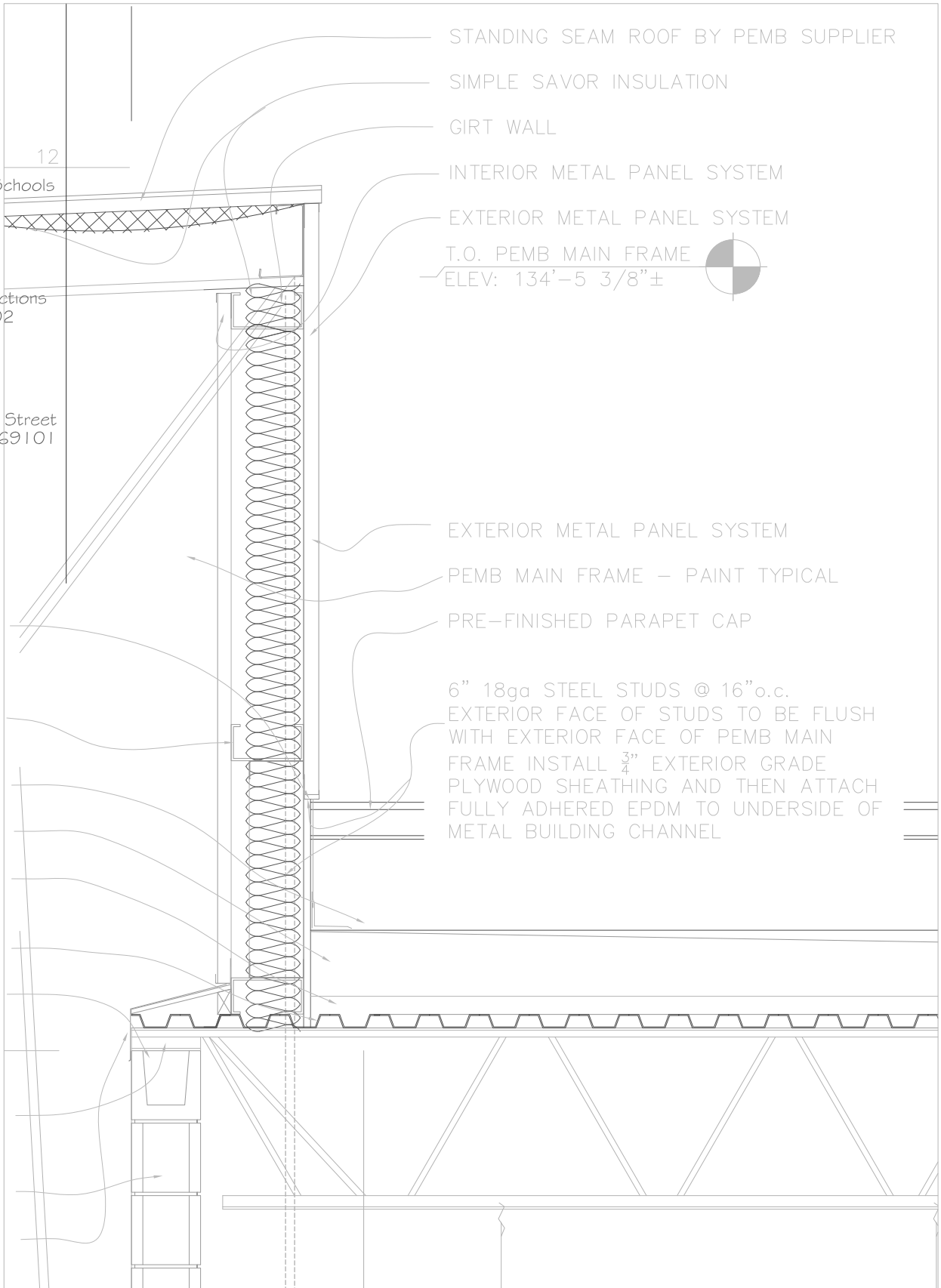
PROJECT

Perkins County Schools

Date: 4-3-14

Drawing: Wall Sections
From Sheet: A402

CG-Architects
319 East Francis Street
North Platte, NE 69101



STANDING SEAM ROOF BY PEMB SUPPLIER

SIMPLE SAVOR INSULATION

GIRT WALL

INTERIOR METAL PANEL SYSTEM

EXTERIOR METAL PANEL SYSTEM

T.O. PEMB MAIN FRAME

ELEV: 134'-5 3/8"±



EXTERIOR METAL PANEL SYSTEM

PEMB MAIN FRAME – PAINT TYPICAL

PRE-FINISHED PARAPET CAP

6" 18ga STEEL STUDS @ 16"o.c.

EXTERIOR FACE OF STUDS TO BE FLUSH WITH EXTERIOR FACE OF PEMB MAIN FRAME INSTALL 3/4" EXTERIOR GRADE PLYWOOD SHEATHING AND THEN ATTACH FULLY ADHERED EPDM TO UNDERSIDE OF METAL BUILDING CHANNEL

TITLE

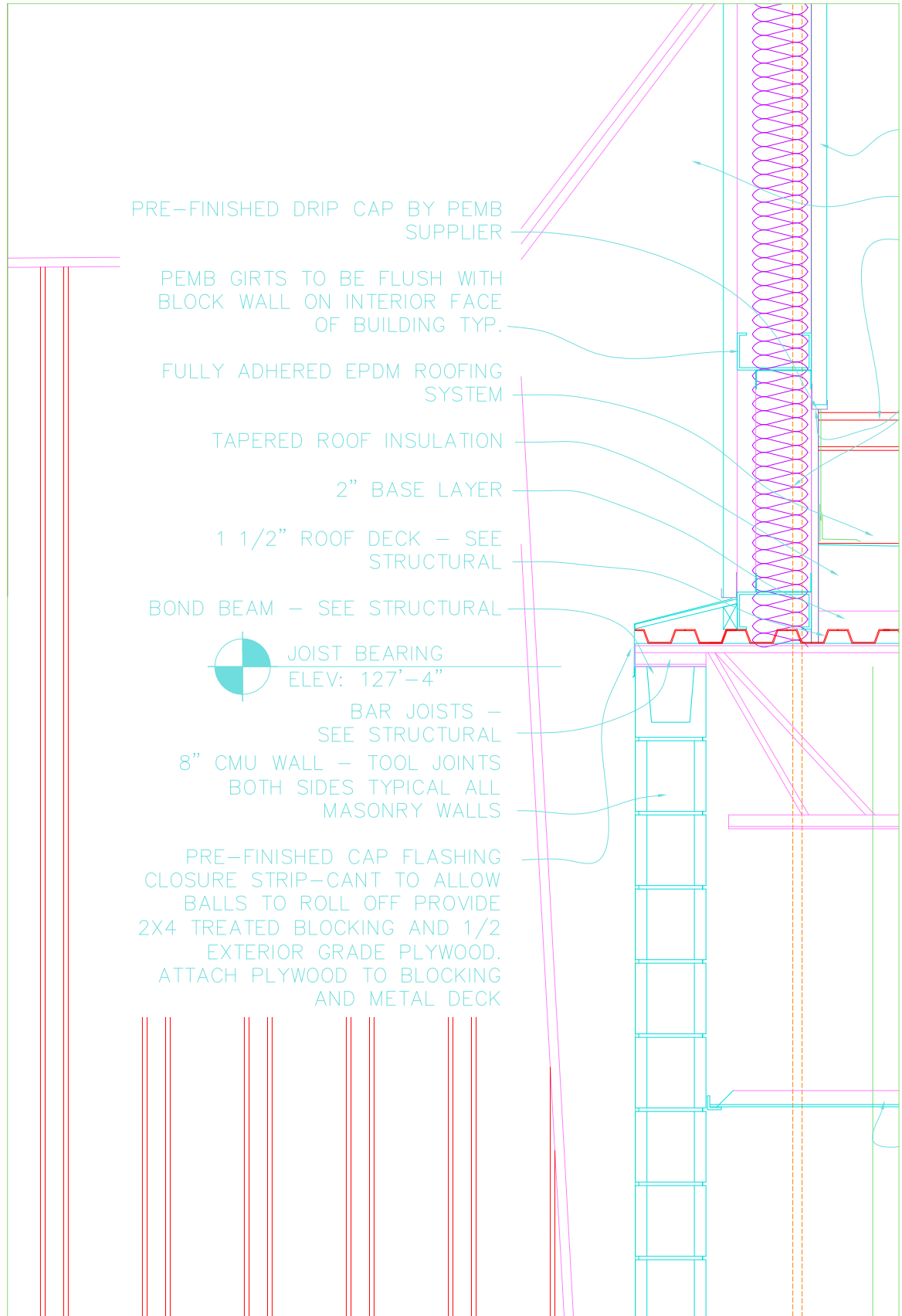
Wall Sections
S-8B/A402
BB-3

PROJECT

Perkins County Schools

Date: 4-3-14
Drawing: Wall Sections
From Sheet: A402

CG-Architects
319 East Francis Street
North Platte, NE 69101



TITLE

Wall Sections
S10/A402
BB-3

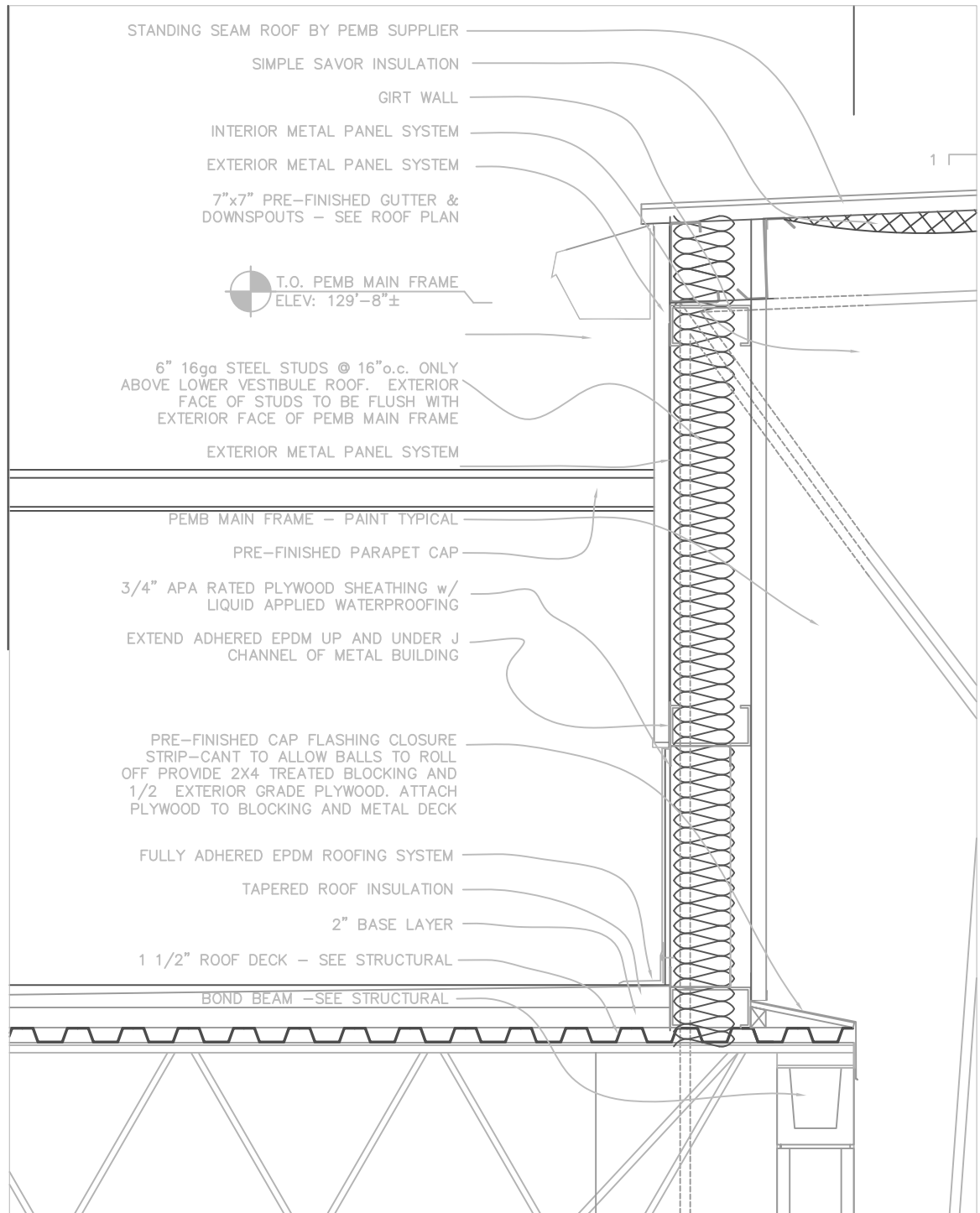
PROJECT

Perkins County Schools

Date: 4-3-14

Drawing: Wall Sections
From Sheet: A402

CG-Architects
319 East Francis Street
North Platte, NE 69101



TITLE

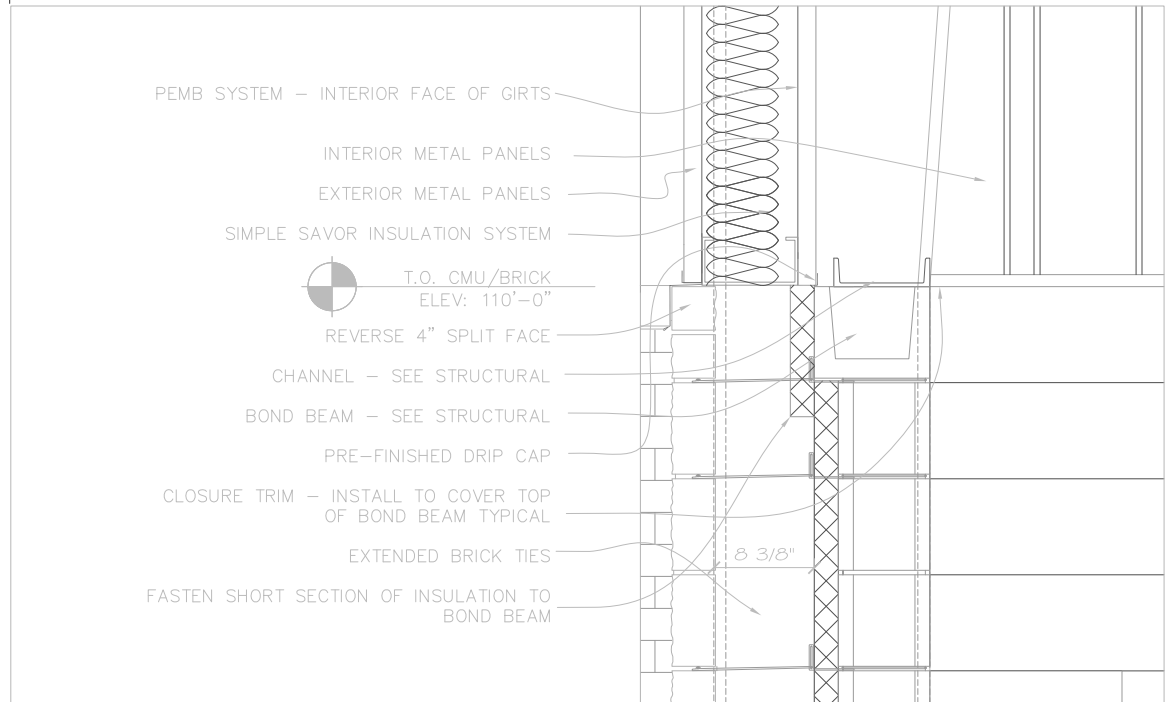
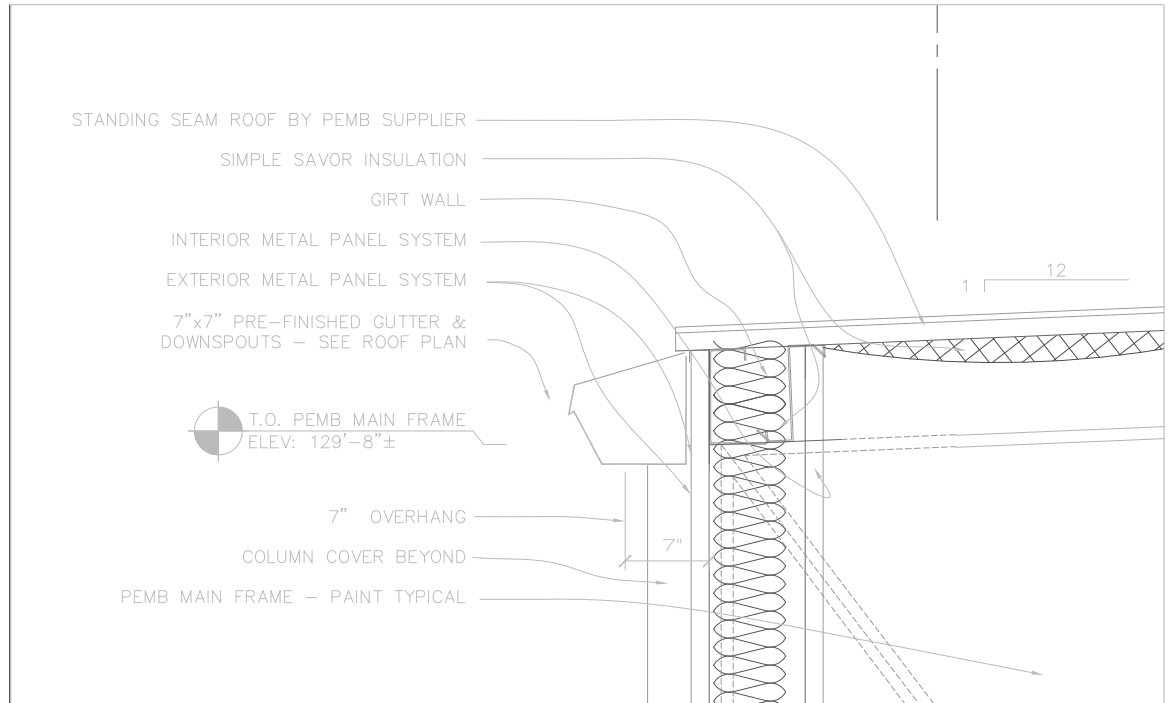
Wall Sections
S11/A403
BB-3

PROJECT

Perkins County Schools

Date: 4-3-14
Drawing: Wall Sections
From Sheet: A402

CG-Architects
319 East Francis Street
North Platte, NE 69101



Bid Bulletin 3



Date: 03/27/2014

Project Name: 2014 High School Renovation & Addition

Project #: 12103

Mechanical Specification Items:

MS1. Subject to compliance with requirements, the following are to be included as approved manufacturers for the respective equipment:

- A. Water Heaters: Rheem
- B. Fans: ACME
- C. Electric Cabinet Unit Heaters: Raywall
- D. Fabric Duct: Air Distribution Concepts
- E. Louvers: Greenheck; Louvers & Dampers, Inc.
- F. Metal Ducts: Spiral Pipe of Texas
- G. Fire Dampers: Leader Industries

Electrical Drawing Items:

ESK-1 Alternate Fluorescent Luminaire Schedule

- LED luminaire package shall be provided under base bid. Provide quote for fluorescent lighting package under alternate bid. Owner to select final package.
- Fluorescent alternates have been specified for industry common fixtures. Where alternates have not been provided there is not a common industry equal and the recommendation is to either stick with the LED light fixture specified or submit an alternate fluorescent fixture for prior approval.

ESK-2 Alternate Fluorescent Energy Code Summary

- Inverter within room B107 would require being increased as indicated if the alternate lighting package was accepted. If the LED package is selected, inverter sizing shall remain as specified on construction documents.
- Note that branch circuiting will require being reconfigured if fluorescent lighting package is accepted. Include allowance indicated to adjust branch circuits due to less efficient luminaires. Fluorescent luminaire package is 40% less efficient than LED luminaire package.

E500 Lighting Fixture Schedule – Description for luminaire N should read “3’ DIAMETER RECESSED LENSED LED”.

Submitted By: Jeremy Klima, Ben Schmitt

LIGHTING FIXTURE SCHEDULE - FLUORESCENT ALTERNATE

FIXT NO.	MANUFACTURER	SUBS. (NOTE B)	CATALOG NO. (NOTE A)	LAMP DATA		VOLTS	INPUT WATTS	MOUNTING	DESCRIPTION	REMARKS
				LAMPS	TYPE					
A	COOPER METALUX	Y	HBI 654T5 W A/WG 277V L5841 DIM WITH HB-SPM	(6) T5HO	F	277	351	RIGID PENDANT	HIGHBAY WITH WIREGUARD	3
B	COOPER METALUX	Y	SSF 232 UNV HB81DIM	(2) 32W T8	F	277	62	SURFACE/PENDANT	STEP DIM STRIP LIGHT	3
C	COOPER PORTFOLIO	Y	PD6V142 EDMARK7 60V H WF	(1) 42W TTT	CFL	277	45	RECESSED	6" OPEN DOWNLIGHT	--
C1	COOPER PORTFOLIO	Y	PD6V142 EDMARK7 60V 4GDF	(1) 42W TTT	CFL	277	45	RECESSED	6" WET LOCATION DOWNLIGHT	--
D	COOPER METALUX	Y	2GC8 FAN 232 A125 UNV 5LTVS81 G3	(2) 32W T8	F	277	62	RECESSED	2x4 RECESSED GASKETED, LENSED	--
D1	COOPER METALUX	Y	2GC8 FAN 332 A125 UNV 5LTVS82 G3	(3) 32W T8	F	277	92	RECESSED	2x4 RECESSED GASKETED, LENSED	--
G	COOPER METALUX	Y	2GC8 FAN 217 A125 UNV 5LTVS81 G3	(2) 17W T8	F	277	36	RECESSED	2x2 RECESSED GASKETED, LENSED	--
H	COOPER METALUX	Y	2RDI 232 FLS UNV 5LTVS81	(2) 32W T8	F	277	62	RECESSED	2x4 RECESSED VOLUMETRIC	--
H1	COOPER METALUX	Y	2RDI 332 FLS UNV 5LTVS82	(3) 32W T8	F	277	92	RECESSED	2x4 RECESSED VOLUMETRIC	--
K	COOPER CORELITE	Y	DWI WA 3L40 1D UNV SU-WA4	2600 LM	LED	277	27.4	WALL	VANITY LIGHT	1
K1	COOPER CORELITE	Y	DWI WA 4L40 1D UNV SU-WA4 2S	3300 LM	LED	277	36.1	WALL	STAIRWELL LIGHT WITH OCC SENSOR	1, 2
L	COOPER METALUX	Y	2GC8 FAN 232 A125 UNV HR81DIM	(2) 32W T8	F	277	62	RECESSED	2x4 RECESSED LENSED STEP DIM	--
M	COOPER METALUX	Y	2RDI 217 FLS UNV 5LTVS81	(2) 17W T8	F	277	36	RECESSED	2x2 RECESSED VOLUMETRIC	--
N	FOCALPOINT	P	FSD 33 D 6 T8 D 277 U FLXP WH	(6) 25W T8	F	277	136	RECESSED	3' DIAMETER RECESSED LENSED	--
P	COOPER CORELITE	Y	VB WH 2T8 1 D 277 AC48 ST 8 DL4	(4) 32W T8	F	277	124	PENDANT	8' PENDANT	3
Q	COOPER METALUX	Y	VT3 332DR 277 WL WITH 0-10V DIMMING	(3) 32W T8	F	277	92	SURFACE	4' WET LISTED STRIP	--
U	COOPER MCGRAW-EDISON	Y	TT A1 LED E1 WQ BZ DOS	3000 LM	LED	277	34	SURFACE	CANOPY LIGHT	--
V	COOPER LUMARK	Y	XTOR2A	1400 LM	LED	277	21	WALL	EXTERIOR WALL MOUNT	1
W	COOPER LUMARK	Y	XTOR5A N MS/DIM-L20	3500 LM	LED	277	50	WALL	EXTERIOR WALL MOUNT	1
X	COOPER SURE-LITES	Y	CX61	N/A	LED	277	1	UNIVERSAL	SINGLE FACE EXIT SIGN	4
X1	COOPER SURE-LITES	Y	CX62	N/A	LED	277	1	UNIVERSAL	DOUBLE FACE EXIT SIGN	4
X2	COOPER SURE-LITES	Y	CX71 SD	N/A	LED	277	1	UNIVERSAL	SINGLE FACE EXIT SIGN WITH SELF DIAGNOSTICS	4

ALTERNATE FLUORESCENT LUMINAIRE SCHEDULE

PROJECT NO. 12103
DATE 03/27/2014
DRAWING REFERENCED E500
TYPE BID BULLETIN 3
SKETCH
ESK -1

10360 Ellison Circle
Omaha, NE 68134
Phone: 402.991.5520
www.specializedeng.com



ENERGY CODE SUMMARY - ALT

BUILDING AREA METHOD

ASHRAE 90.1 (2007) OR IECC (2009)

BUILDING AREA TYPE	AREA (SQ. FT.)	ALLOWED LPD (WATTS/SQ. FT.)	ALLOWED POWER (WATTS)
GYMNASIUM	12075	1.1	13283
SCHOOL/UNIVERSITY	19585	1.2	23502
TOTAL ALLOWED	--	--	36785
TOTAL ACTUAL	31660	--	35017

- INVERTER IN ROOM B107 SHALL INCREASE TO 3.75 KVA INVERTER UNDER ACCEPTANCE OF FLUORESCENT LIGHTING PACKAGE.
- INCLUDE \$6000 ALLOWANCE FOR ADDITIONAL BRANCH CIRCUITS DUE TO LESS EFFICIENT LUMINAIRES.

10360 Ellison Circle
Omaha, NE 68134

Phone: 402.991.5520
www.specializedeng.com



ALTERNATE FLUORESCENT ENERGY CODE SUMMARY

PROJECT NO.
12103

DATE
03/27/2014

DRAWING REFERENCED
E500
TYPE
BID BULLETIN 3

SKETCH
ESK -2