

Bid Bulletin #4

PROJECT: York General Hospital Addition/Renovation

DATE: March 5th, 2014

This Bid Bulletin, applicable to the above project, is issued to all known plan holders before receipt of proposals.

This Bid Bulletin includes items 4-1 through 4-10. Each item shall be fully incorporated into the Bidding/Contract Documents and have the same force and effect as though originally included. Bidders shall acknowledge receipt of this Bid Bulletin on the bid form.

Item 4-1 **REMINDER: Bid Date has been moved to March 11th, 2014. Bids are due prior to 1:30 p.m. to York General Hospital.**

Item 4-2 Please indicate BB#4 on the Bid Form.

Item 4-3 Bid Bond's will NOT be required for the YGH project. Performance and Payment costs are still to be indicated on Bid From.

Item 4-4 Area A- Hydro Pool- the floor and walls for Pool opening will be by foundation contractor. Concrete deck above and SOG will be by flat work contractor.

Item 4-5 See attached Plumbing/Piping and HVAC Summary of work. Alterations have been made on responsibilities.

Item 4-6 See attached Hydropool drawings- Contractors are required to get Connections to pool. Final connections will be by pool installer.

Item 4-7 Exterior sprinkler drawings- Attached are head sketches of what is existing along the west side of YGH. Areas not being affected by construction must be kept operational to reduce plant loss.

Item 4-8 Roofing- When using water based roofing adhesive the use of 1/2" High density board will be required.

Item 4-9 Selective demo company will be required to remove elevator and equipment once disconnected by others. Hydraulic shaft to be removed by others.

Item 4-10 **Bidders are reminded that sealed bids will be received no later than 1:30 p.m. CST March 11th, 2014 at the York General Hospital, 2222 N. Lincoln Ave, York, NE 68467. Faxed bids will be allowed. Fax bids to the Attention of Bob Ailor at (402) 362-0499. Emailed Bids will also be accepted. Email to Bob Ailor at bob.ailor@yorkgeneral.org.**

End of Bid Bulletin #4

SUMMARY OF WORK – PLUMBING/PIPING

PART 1 - GENERAL

1.1 RELATED DOCUMENTS

- A. Drawings and general provisions of the Contract, including General and Supplementary Conditions and other Division 1 Specification Sections, apply to this Section.

1.2 WORK COVERED BY CONTRACT DOCUMENTS

- A. **Provide all labor, material, equipment, supervision and other items necessary to complete Sections:**

- 033000 - Cast-in-place concrete (As it pertains to blocking and equipment pads,
- 066600- Solid Surface Shower Bases
- 078400- Firestopping-(As it pertains to new penetrations)
- 079205 - Joint Sealants (Pertaining to Scope)
- 083100- Access Panels- Provide as required- Install by others
- 220000- General Mechanical Requirements
- 220500- Common Work Results for Mechanical
- 220513- Common Motor requirements
- 220516- Expansion fittings and Loops
- 220519- Meters and Gages
- 220523- General-duty Valves
- 220529- Hangers and supports
- 220548- Vibration and Seismic Control for Mechanical
- 220553- Mechanical Identification
- 220700- Mechanical Insulation
- 221116- Domestic Water Piping
- 221119- Domestic water piping specialties
- 221316- Sanitary Waste and Vent piping
- 221319- Sanitary Waste piping specialties
- 221413- Storm drainage piping
- 221423- Storm Drainage piping specialties
- 221429- sump pumps
- 221513- General Service compressed air piping
- 221519- General Service packaged air compressors and receivers
- 223500- Domestic Hot water heat exchangers
- 224000- Plumbing Fixtures
- 225513- Compressed-air, gas, and vacuum piping
- 225519- medical and laboratory air, gas and vacuum equipment
- 230516- Expansion Fitting and loops for HVAC
- 230519- Meters and gages for HVAC
- 230523- General duty valves for HVAC
- 231113- Facility Fuel oil piping
- 231123- Facility Natural Gas piping
- 232113- Hydronic Piping
- 232123- Hydronic pumps
- 232213- Steam and Condensate piping
- 232223- Steam and condensate pumps
- 235000- Burners, Controls and Accessories.
- 235316- Deaerators
- 235700- Hydronic and steam heat exchangers

Contract specifically includes, but is not limited to the following:

- **This scope of work includes connection to site utilities 5' outside of the building, but not limited to storm sewer, sanitary sewer, natural gas and domestic water.**

Contract specifically includes, but is not limited to the following (continued):

- **Contractor is required to maintain existing equipment and utilities during phasing work (ie. Domestic, sewer, hydronic and gas) Rerouting will be required.**
- **All trenching, back-filling and pipe bedding necessary to complete the work in this scope.**
- **Provide all access door as needed to complete scope**
- **Provide and install backing and support for own scope.**
- **Provide any and all piping outside of base bid to continue services for the owner.**
- **Provide all excavation and backfill for all below grade pipe installation. Excess soil from excavation must be removed from the site.**
- **Coordinate and install temperature control valves and devices provided by others in piping system.**
- **Equipment pads by plumbing contractor**
- **Solid Surface shower pans by plumbing contractor**
- **Contractor to provide Medgas certification**
- **Temporary seal roof penetrations as soon as penetrations are made.**
- **Contractor required to patch holes for demoed or relocated equipment or penetrations to match existing**
- **Provide templates of openings to carpenters for sink installation.**
- **Seal all piping penetrations as required per code.**
- **Provide water test at completion of each project for proof of water quality.**
- **Control Valves, immersion well sensors, differential pressure sensor taps shall be by the piping contractor.**
- **Provide penetrations for own work**
- **Provide site management capable of ordering and tracing materials and subcontractors. Manager will be required to attend weekly coordination meetings with other contractors. During the first month, the manager will be required to attend more meetings to coordinate roof penetrations and routing of piping.**
- **Provide all unloading, material handling and hoisting of own materials.**
- **Provide clean-up of all materials and debris. No less than every week (Friday) the site will be left clean of construction debris. This may require full time clean-up personnel.**
- **Coordinate layout of all work with all other trades before installation.**
- **Coordinate inspections / testing as specified per scope of work.**

B. Contract Documents were prepared for the Project by ALTUS Architectural Studios, 12925 West Dodge Rd, Omaha, NE 68154

1. Project Location: 2222 N. Lincoln Ave, York, NE 68467
2. Owner: York General Hospital, 2222 N. Lincoln Ave, York, NE 68467

1.3 WORK SEQUENCE/SCHEDULE

A. The work is scheduled to commence per the construction manager's schedule, but is subject to change.

1.4 CONTRACTOR USE OF PREMISES

A. Use of the Site: Limit use of the premises to work in areas indicated. Confine operations to areas within contract limits indicated. Do not disturb portions of the site beyond the areas in which the Work is indicated.

B. Smoking: Tobacco products are not allowed on hospital property

SUMMARY OF WORK – Plumbing

END OF SECTION

SUMMARY OF WORK – HVAC

PART 1 - GENERAL

1.1 RELATED DOCUMENTS

- A. Drawings and general provisions of the Contract, including General and Supplementary Conditions and other Division 1 Specification Sections, apply to this Section.

1.2 WORK COVERED BY CONTRACT DOCUMENTS

- A. **Provide all labor, material, equipment, supervision and other items necessary to complete Sections:**

033000- Cast in place concrete(As it Pertains to equipment pads)

078400–Firestopping (related to scope of work)

089000- Louvers and Vents

079005- Joint Sealants- As it pertains to scope

083100- Access Panels- Provide- Install by others

230000- General HVAC Requirements

230500- Common Work Results for HVAC

220513- Common Motor Requirements for HVAC

230519- Meters and Gages for HVAC

230529- Hangers and Supports for HVAC

220548- Vibration and Seismic controls for HVAC

230553- HVAC Identification

230700- HVAC Insulation

232300- Refrigerant piping

233113- Metal Ducts

233300- Duct Accessories

233423- HVAC Power Ventilators

233600- Air Terminal Units

233713- Diffusers, Registers, and Grilles

233723- Intake and Relief Ventilators

237313- Modular indoor central station air handling units

238126- Split-system air conditioning units

238216- Steam air Coils

238219- Fan Coil Units

238239- Unit Heaters

238413- Humidifiers

238416- Mechanical Dehumidification units

Contract specifically includes, but is not limited to the following:

- **Provide site project management, capable of ordering and tracking materials and subcontractors. Managers will be required to attend weekly coordination meetings with other contractors. During the first month, the manager will be required to attend more meetings to coordinate roof penetrations and duct routing.**
- **Provide Temporary connections and temp ducting to provide occupancy to owner for areas outside of the construction zone if required.**
- **Proved Temporary HVAC under this scope.**

- Provide all unloading, material handling and hoisting of own materials.

Contract specifically includes, but is not limited to the following (continued):

- Provide access doors per scope or as needed.
- Furnish and install all louvers.
- Provide firestopping at HVAC penetrations.
- Patch holes for demoed or relocated equipment or penetrations- match existing.
- Provide own backing and support systems for scope.
- Includes testing and inspections as required.
- Provide and install all equipment pads as required for this scope.
- Change out Filters prior to balancing, provide one set of each filter for owner stock.
- Patching or replacement of ceilings damaged or removed during installation and testing out of Division 23 HVAC work.
- Provide own penetrations
- Mechanical Contractor shall install control Dampers
- Provide clean-up of all materials and debris. No less than every week (Friday) the site will be clean of construction debris. This may require full time clean-up personnel.
- Follow Advanced SMACNA requirements.
- Include all work associated with installing roof curbs for HVAC equipment (if required).
- Coordinate layout of all work with all other trades before installation.
- At end of day all duct ends and opening to be covered or as otherwise specified to keep ducts clean.
- Coordinate inspections / testing as specified per scope of work.

B. Contract Documents were prepared for the Project by ALTUS Architectural Studios, 12925 West Dodge Rd, Omaha, NE 68154

C.

1. Project Location: 2222 N. Lincoln Ave, York, NE 68467
2. Owner: York General Hospital, 2222 N. Lincoln Ave, York, NE 68467

1.3 WORK SEQUENCE/SCHEDULE

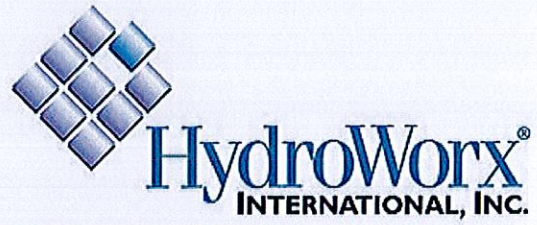
A. The work is scheduled to commence per the construction manager's schedule, but is subject to change.

1.4 CONTRACTOR USE OF PREMISES

A. Use of the Site: Limit use of the premises to work in areas indicated. Confine operations to areas within contract limits indicated. Do not disturb portions of the site beyond the areas in which the Work is indicated.

B. Smoking: Tobacco products are not allowed on hospital property

END OF SECTION



1420 Stoneridge Drive, Suite C
Middletown, Pennsylvania 17057
Toll: 800-753-9633
Phone: 717-902-1923
Fax: 717-902-1933

S
E
R
I
E
S



1200-Series Design & Installation Guide

February 2013

1
2
0
0



HydroWorx[®]
INTERNATIONAL, INC.

Contact Information

HydroWorx International Inc.

1420 Stoneridge Drive, Suite C
Middletown, Pennsylvania 17057
www.hydroworx.com

Toll Free: (800) 753-9633
Phone: (717) 902-1923
Fax: (717) 902-1933

Table of Contents

General Design Information	1-3
Typical Installation Scope-of-Work	4-9
Design & Construction Checklist	9-10
Drawings & Photographs:	
Room Layout	
Rough Opening	
Rough Opening Edge Detail	
Mechanical Pit Layout	
Front Section View	
Right-Side Section View	
Front Plumbing	
Right-Side Plumbing	
Left-Side Plumbing	
Fill Line & Skimmer Detail	
Electrical	
Computer & Video Cabinet Layout	

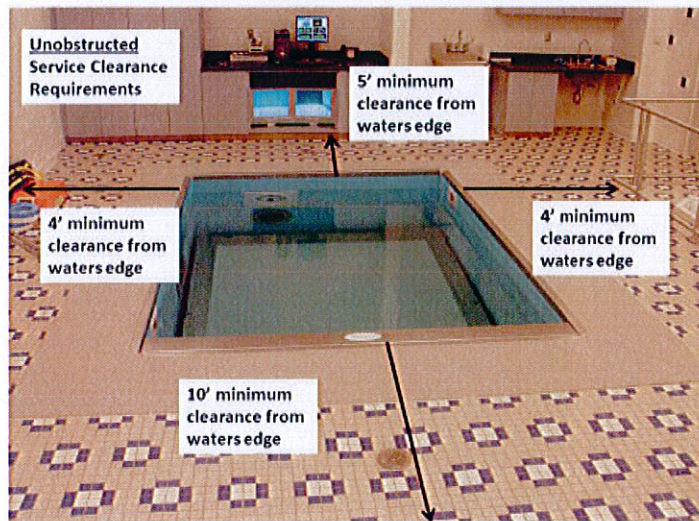
Product Description

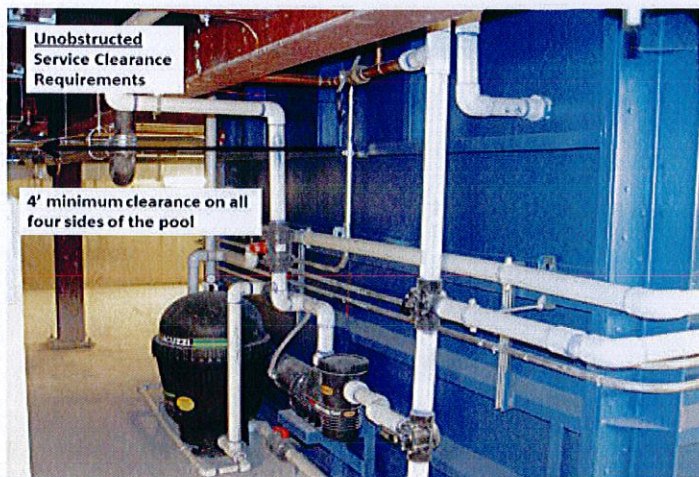
The HydroWorx 1200 Series pool is made of steel wall panels, adjustable pool floor, resistance jets and underwater treadmill. The 1200 Series pool is installed flush with the facility's poolroom floor. The tank walls, support structure and pool components are located below the floor surface in the lower level mechanical room.

As regulatory and code requirements vary significantly from State to State and even between local jurisdictional agencies, permitting and compliance with State and local provisions relative to health, pool/spa, building, electrical, plumbing mechanical, safety, etc. is the responsibility of the owner. It is critical that the owner and/or their authorized design representative consult with the agencies having jurisdiction to ensure compliance with applicable regulatory and code requirements. Contact HydroWorx immediately should regulatory or code circumstances arise.

Access & Serviceability

Recommended minimum architectural, structural, mechanical, electrical, and plumbing design criteria identified in this design & installation guide must be maintained for future serviceability of the pool. **Any design that does not meet the minimum requirements must be approved by HydroWorx.**





Site Preparation

The contractor is responsible for preparation of the site prior to installation. All utilities (power, water, sanitary, etc.) required for pool operation shall be provided and installed by the contractor. For more details about pool requirements, please refer to the subsequent technical specifications.

Pool Room

The water treatment area of the HydroWorx 1200 series pool is designed to accommodate one to two (1 - 2) patients/athletes during treatment sessions. The recommended *minimum* dimensions for the poolroom is 15' wide by 25' long by 10' high allowing adequate installation and future service space around and above the pool. Additional space may be required for: dehumidification systems, cabinetry, storage, showers, changing rooms, etc.

Floor or perimeter drains must be incorporated into the design of the pool area. If floor drains are chosen, several should be placed around the pool with special attention to the high traffic areas. The finished floor **MUST** be flat/level and consistent at all edges of the opening and for a distance of 4" beyond the opening edge.

Adequate airflow, temperature control, and dehumidification in the poolroom is required primarily to maintain a comfortable temperature for the occupants, and to protect against adverse conditions inherent with a humid environment. The pool has a surface area of 57 ft² and the water is generally kept between 92-94 degrees Fahrenheit. Poolrooms are typically kept at 85 degrees Fahrenheit to keep the variance between the pool water and the ambient air temperature at a minimum. The anticipated daily pool evaporation rate under these conditions is approximately 15-20 gallons per day. Check with jurisdictional code requirements for minimum air exchange and humidity requirements.

This unit includes a computer, a control pendant, and when selected, an optional underwater video monitoring system. The poolroom design must include cabinetry located in front of the pool to accommodate these components.

Mechanical Pit

The mechanical pit design must include adequate **unobstructed** access to the pool tank, accessory equipment (filter, pumps, heater, etc.), and the electrical control panel. *Minimum* dimensions for the

mechanical pit are shown in the enclosed drawings. The design must also include HVAC controls appropriate for the area, lighting, and a sump pump or drains. ALL of the HydroWorx 1200 external equipment detailed in the *Mechanical Pit Layout Drawing* MUST be located in the HydroWorx mechanical pit as detailed in this design and installation guide. Moving any of this equipment may result in the voiding of warranty coverage.

The pool's structural weight is 10,000 pounds, the water weight of 3,100 gallons is 26,000 pounds, totaling 36,000 pounds. This weight will be bearing on the mechanical pit floor; therefore a structural engineer should be consulted to determine structural requirements for the floor. The required vertical distance from the mechanical pit floor to the poolroom FINISHED floor is 8'-6".

The mechanical pit floor below the pool must be constructed to very tight tolerances. The floor must be level, with less than 1/8" variance over 10', as measured with a straightedge. The floor must be **hard-troweled and finished smooth**, not left rough as is commonly done in mechanical rooms. Prior to HydroWorx mobilizing to site, the general contractor will be required to perform a floor elevation survey focusing on the areas the equipment sits. If the slab does not meet the above tolerances, corrective action will be required prior to HydroWorx mobilizing to site.

The HydroWorx pool is drained via gravity through two (2) PVC drains located at the bottom of the pool. The drains shall be connected to a sump pit or gravity drain so the water can be discharged during normal maintenance and as necessary for operational demands of the owner. **The sump pit or gravity drain selected by the owners design professionals must be sized to handle a minimum of 60 GMP. The HydroWorx maintenance pump CANNOT be used to drain the pool or it will void its warranty.**

The mechanical pit should be designed to maintain an ambient temperature typical for mechanical room occupancy (79° - 83° F) during maintenance of the pool equipment. The information below may be utilized for heat discharge in determining the appropriate HVAC design for the mechanical pit. The HydroWorx 1200 Series therapy pool, fully equipped, includes the following:

- 1 - 11 kW Electric Heater
- 1 - 4 HP Front Therapy Jet Pump (5,094 BTU/hr)
- 1 - 10 HP Treadmill Motor (25,467 BTU/hr)
- 1 - 2 HP Lift Motor (5,094 BTU/hr)
- 1 - 1 HP Maintenance Pump (2,547 BTU/hr)

Utilities

Water Supply: The owner shall provide a minimum 2" diameter water supply line with anti-siphon device connected to the circulation as shown in the HydroWorx drawings and a 3/4" diameter hose bib with anti-siphon device in the poolroom.

Electrical Service: The owner shall provide one (1) electrical service drops designed for the requirements of the HydroWorx control panel and the HydroWorx heater:

- Drop No. 1 – HydroWorx Control Panel: 120/208 volt, 100 amp, 3-phase, 5-wire configuration (L1, L2, L3, Ground, and Neutral)

Sanitary: The owner shall provide a sump pit with pump or floor drains for connection to the pool's maintenance system and main drains. The sanitary system should be designed to accommodate 3,100 gallons via gravity through a 2" PVC pipe. **60 GPM draining capacity** in the HydroWorx mechanical space is the acceptable **minimum**. The HydroWorx maintenance pump CANNOT be used to drain the pool or it will void the components warranty.

Gas: Natural or LP gas heater can be provided in lieu of electric at an additional cost. Consideration for ignition air and flue-gas ventilation per the heater manufacturer's installation guidelines is required.

Typical Scope-of-Work Necessary to Install a HydroWorx Pool

Typical General Contractor Scope-of-Work:

Construct the poolroom and mechanical pit per the owner's design documents and in accordance with this HydroWorx Design & Installation Guide.

Attach the pressure-treated wood nailer around the perimeter of the pool's rough opening (see Rough Opening Edge Detail).

Provide a 3" diameter opening/chase / straight pipe or long sweep (no 90's) dedicated solely for HydroWorx low voltage control cables from the mechanical pit into the poolroom, in close proximity to the pool's computer control system typically located centered on the wall on the front side of the pool / front of the HydroWorx pool is the end where the resistance jets are located. **This must be a dedicated chase / sleeve for the HydroWorx cabling and no other equipment can be run in this chase / sleeve.**

General Contractor is responsible for receiving and unloading the pool components and equipment based on the delivery date noted on the delivery confirmation form.

It is also the responsibility of the General Contractor to set the external pool equipment in the mechanical space per the equipment layout, assemble the tank walls per the pool room layout and HydroWorx provided PHASE 1 assembly instructions and set the PHASE 2 labeled components down into the pool. The sump pit must be operational once the equipment is set to avoid water damage and the pool and its equipment must be protected during the construction process.

Below you will see a picture of the typical rigging method to offload and set the pool into place in the pool room. The pool will be delivered on a flatbed truck to the project site.



Phase I: General Contractor Scopes of Work

- Typical rigging equipment that the contractor will need to perform the unloading and phase 1 assembly responsibilities are a lull with 6' minimum fork extensions, properly rated straps & shackles, properly rated carpet dollies & drywall carts. A gantry crane with a capacity rating of **2 tons** with an **ELECTRIC CHAIN HOIST** is typically used to set the pool components in the pit and requires a minimum of 9' clear ceiling height in the pool room. This crane can be sourced at Lifting Gear Hire by calling (800) 878-7305 or another local equipment rental company. See the picture below showing a gantry crane in use.



- General Contractor is responsible to plan for and provide appropriate access from the point of delivery to the final location of the pool and components. The dimension of the largest pool component is 6' wide x 9' long x 3' high with an approximate weight of 1500 lbs. Please consult with HydroWorx on the proposed delivery plan for the pool early in the project planning.
- If the (1) One Day Phase 1 Assembly Supervision OPTION by a HydroWorx representative is purchased in the sales contract, HydroWorx requires 30 days' notice to schedule or reschedule this date.

- Upon completion of the Phase I work, it is the responsibility of the general contractor to protect the pool and components from damage and ensure that there is **no standing water in the mechanical pit at any time.**

Phase II: Final Installation & System Testing Overview

- The customer's General Contractor is responsible for providing a (2) ton Gantry Crane with electric chain hoist for the phase 2 installation. The gantry crane must be setup in the poolroom the day before the scheduled phase 2 installation is to begin and there must be 9' of ceiling clearance over the entire pool including all fixtures and a rollable surface. The Gantry Crane can be sourced at Lifting Gear Hire 800.878.7305
- A HydroWorx representative will make (1) installation trip to install the pool lining system, perform the proprietary mechanical connections and system test the unit. Saturday and Sunday full day work access is required for the HydroWorx technician. All plumbing and electrical work on the pool must be completed 30 days prior to the scheduling of the phase 2 final installation and permanent power and water must be operational.
- The general contractor is responsible for providing a minimum of (2) two mechanically skilled laborers for the entire duration of the phase 2 final installation and system testing.
- Fill/caulk the 1" gap between the pool's perimeter decking and the edge of the rough opening around the entire perimeter of the pool (see Rough Opening Edge Detail). Self-leveling, expandable sealant rated for pool environments is typical.
- Install pool room finishes including any required pool depth markers on the poolroom flooring, safety equipment, signage, and poolroom cabinetry required for housing the HydroWorx computer, controllers, and underwater video components.
- Upon completion of the installation and system testing, it is the responsibility of the general contractor to protect the pool and components from damage and the pool is typically left up and running and the scheduling of phase 2 should be planned to make this feasible. The water must be tested / balanced daily and recirculation system maintained to ensure proper water chemistry and maintain product warranty.

Typical Mechanical Contractor Scope-of-Work:

Provide all labor, materials, and equipment required by the owner's contract documents and as needed to accommodate the conditions identified in the HydroWorx Design & Installation Guide and per the designer's documents for adequate heating, ventilation, air conditioning, and dehumidification of the poolroom and mechanical pit. The contractor is responsible for installing the properly sized ventilation and humidity control unit. This is to ensure the mechanical pit temperature does not rise above 85 degrees Fahrenheit with the respective heat loads for the pool equipment only. Careful heat load calculations should also be considered for all other disciplines related to the mechanical pit. Adequate airflow, temperature control, and dehumidification in the poolroom is required primarily to maintain a comfortable temperature for the occupants, and to protect against adverse conditions inherent with a humid environment. The pool has a surface area of 57 ft² and the water is generally kept between 92-94 degrees Fahrenheit.



Typical Electrical Contractor Scope-of-Work:

Provide and connect a 120/208 volt, 100 amp, 3-phase, 5-wire configuration (L1, L2, L3, Ground, and Neutral), to the HydroWorx Control Panel. Refer to the electrical schematic for wiring requirements. Note: Ground wire must be at least the same size as the power conductors.

Provide all labor, materials and equipment necessary to install interconnecting electrical conduit and wiring between each HydroWorx pool component and the HydroWorx Control Panel as required by the owner's design documents, the HydroWorx Installation Guide, and the **panel manufacturer wiring diagram located inside the control panel.**

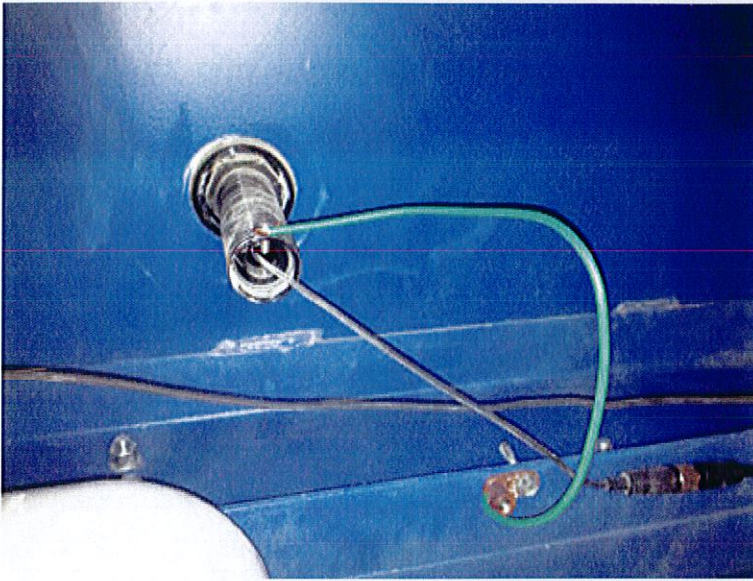
Install metal conduit and wire as required by code from the HydroWorx Control Panel and terminate the feed to each of the following pool components:

- 1 - 10 HP Treadmill Drive Motor
- 1 - 4 HP Front Jet Pump
- 1 - 1 HP Maintenance Pump
- 1 - 2 HP Lift Motor
- 1 - Automatic Water Level System Solenoid Valve
- 3 - Non-GFCI Underwater Video Camera Receptacles (when selected)

Connect the nurse-call alarm switch, if applicable, from the HydroWorx pool to the owner's Nurse-Call Alarm System. The HydroWorx switch is capable of up to 16 amps, and is a dual voltage, single pole safety air switch, using an alternate action latching air sensor.

Unless otherwise required by code, all of the wiring for the devices listed shall be enclosed in the appropriate size **metal conduit** and terminated at the device with 3 feet of flexible Liquidtite conduit. Metal conduit is required to reduce motor noise and GFCI nuisance tripping. All conduit entry points must be sealed with UL Listed sealing device. **Each motor requires a separate conduit run.**

The pool steel tank and all equipment, including the video cameras, must be grounded with a bonding wire. The gauge of the ground wire of any appliance must be as large as the hot wire(s) so it is capable of efficiently conducting electricity away from the device in the event of a short circuit or stray current, as well as prevent GFCI nuisance tripping.



Camera Bonding

Use at least 75°C stranded copper MTW or THHN wire of proper size (refer to electrical schematic) when installing field wiring - DO NOT use solid wire or Romex.

Prior to connection to the HydroWorx Control Panel, check the voltage at each leg of the 200 amp, 3-phase service feed.

Prior to filling the pool with water, check rotation of all pumps, treadmill motor and test pool electrical components.

Typical HydroWorx Scope-of-Work:

Phase I: HydroWorx has no scope of work and is not present onsite for the delivery and setting of the pool equipment unless the one (1) day supervision option is purchased on the sales contract.

| Phase II: Final Installation & System Testing Overview

- All conditions required by the HydroWorx Phase II Site Analysis Checklist must be complete and inspected by a HydroWorx representative before HydroWorx can schedule their field scope of work.
- A HydroWorx representative will make (1) installation trip to install the pool lining system, perform the proprietary mechanical connections and system test the unit. Saturday and Sunday full day work access is required for the HydroWorx technician. All plumbing and electrical work on the pool must be completed 30 days prior to the scheduling of the phase 2 final installation and permanent power and water must be operational.

The facility's poolroom and mechanical pit must be available to HydroWorx technicians into the evening hours and weekends.

Upon completion of the Phase II installation the pool will be turned over to the owner, at which time the water must be tested daily to confirm proper water chemistry. **The pool is typically left up and running and the timing of the phase II installation should be sequenced to make this feasible.**

HydroWorx Design & Construction Checklist

This document is designed to provide steps to improve the coordination of the HydroWorx pool(s) in the design and construction phase of the project.

Step 1

- € Have you requested HydroWorx AutoCAD files for the specific pool model selected by the owner?

The structural stage is NOT too early because these units have design requirements that significantly impact that phase of design.

- € Have you had a conference call with a HydroWorx design & construction representative to discuss design requirements, scope of work, lessons learned etc.?

This is critical to have as EARLY as possible in the project. It is very useful in understanding the connection between Architectural, Structural, Mechanical, Electrical, Plumbing and the design & installation requirements of a HydroWorx pool.

- € Have you requested and incorporated the HydroWorx CSI specs into the bid document?

Step 2

- € Have you provided HydroWorx the pool room design for review and comment?

Step 3

- € Have you provided HydroWorx with project approved final drawings?

Top Lessons Learned:

Setback / permanent clearance requirements are not adhered to creating access issues for service or component failure due to incorrect design.

Scope of work is not clearly defined in bid documents resulting in change orders that impacts the owner.

Verify there are no columns obstructing the pathway of required gantry crane's path. The gantry crane will span the short side of the mechanical pit and will need adequate space to set the lift and treadmill on the front and rear of the pool.

“Verify / Coordinate with pool manufacturer” is a common note on drawings that go to bid and lead to errors and omissions or change orders that can be avoided by verifying the design requirements. HydroWorx believes it critical that we be involved early in the design / development phase given the structural and foundation impacts of our product.

Inadequate air circulation provided to address heat loads of equipment.

Inadequate mechanical space draining solutions (sump pit or floor drain) to meet the 60 GPM draining capacity requirement

Owner's representative does not verify code compliance requirements / seek local & state health department approval early in the design phase. It is left to the end during occupancy process creating change orders to become compliant.

Installation of the HydroWorx pool into an existing building – It is important to identify any criteria that are applicable to existing buildings. If not addressed EARLY in the design process they are often not documented on building “As-Builts”. The potential problem exists of running into unexpected issues that affect the pool location planning and clearances and require last minute changes. It is critical that your engineering drawings identify that all piping, electrical service, structural, mechanical etc. is clear or re-routed in the area proposed for the pool location.

Access for the pool and all components must be considered when sequencing the work on-site. It is the architect/general contractor's responsibility to provide and maintain the required access from the point of delivery to the final product location. This may require wall sections being left open with lintels or headers being used to maintain access or possibly roof sections being left open. Access plan for the pool and components must be reviewed with HydroWorx.

Copper and salt water treatment system used with pools. These systems will have a negative reaction with the stainless steel pool components which will result in voiding the pool warranty for the affected components. Please consult with HydroWorx on any desired alteration to the standard bromine water quality system.

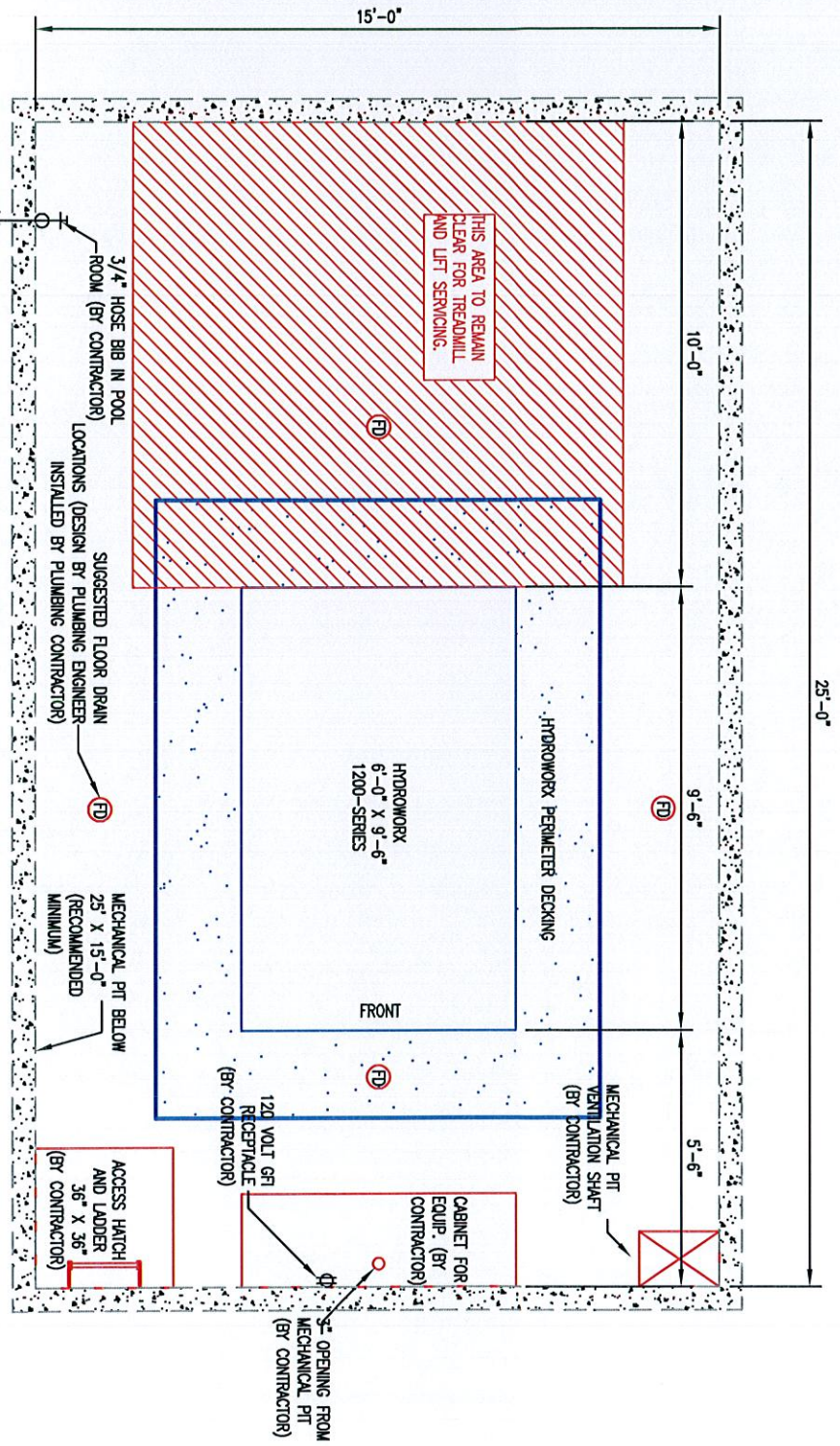
DATE	JANUARY 2013	DESIGNED BY	MM
SCALE	1/4" = 1'-0"	DRAWN BY	NLL

The design and information on this document are recommendations only - confidential - and disclosed to you on the condition that no further disclosure or use is made by you without authorization from HydroWorx International, Inc., Middletown, Pennsylvania.



HydroWorx® International, Inc.

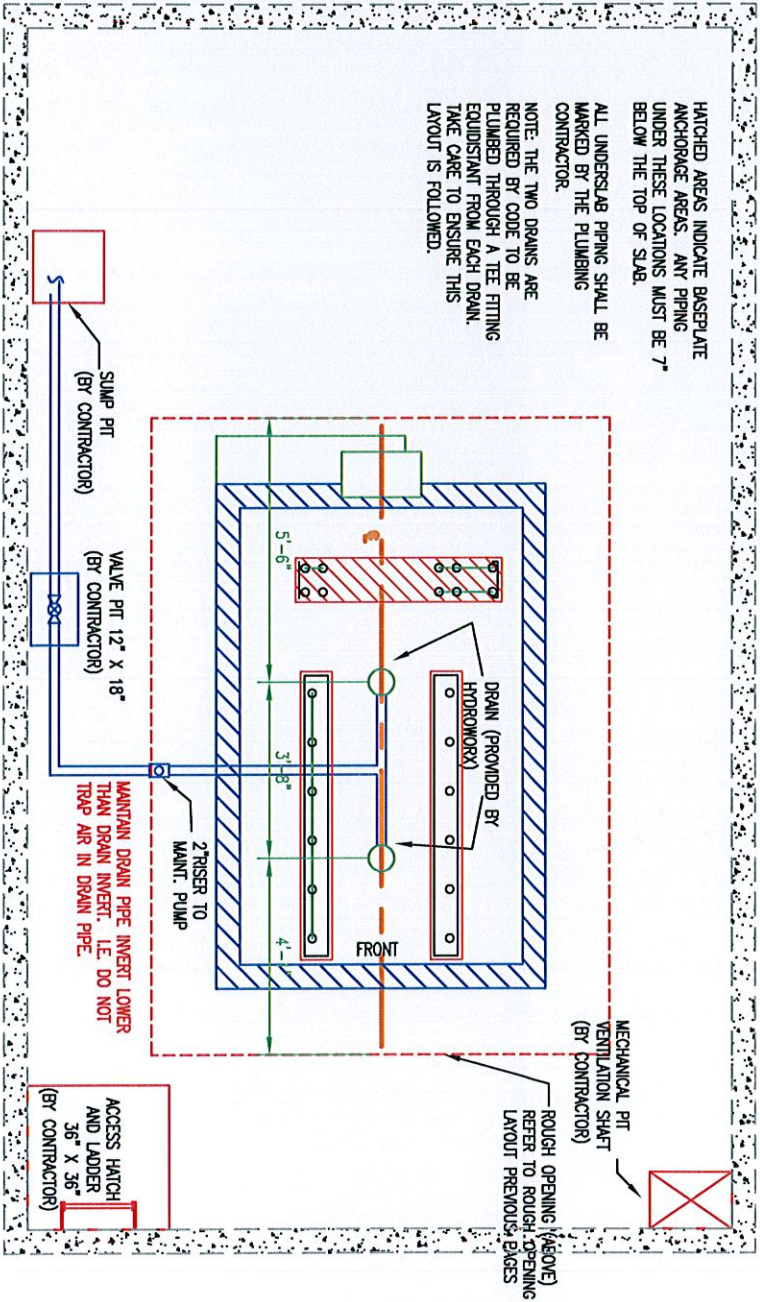
 1200 Series - Room Layout



- NOTE: 1. DRAWINGS ARE DIAGNOSTIC AND ARE NOT SPECIFIC TO ANY PROJECT
2. VERIFY THERE ARE NO COLUMNS OBSTRUCTING THE PATHWAY OF THE REQUIRED GANTRY CRANE'S PAIR. THE GANTRY CRANE WILL SPAN THE SHORT SIDE OF THE MECHANICAL PIT AND WILL NEED ADEQUATE SPACE TO SET THE LIFT AND TREADMILL ON THE FRONT AND REAR OF THE POOL

1420 Stoneridge Drive, Middletown, PA 17057; Telephone 1-800-753-9633; FAX 717-902-1933

- NOTE: 1. DRAWINGS ARE DIAGRAMMATIC AND ARE NOT SPECIFIC TO ANY PROJECT
 2. VERIFY POOL ORIENTATION WHEN LOCATING MAIN DRAINS IN PIT FLOOR
 NOTE: CONTACT HYDROWORK A MINIMUM OF 2 WEEKS BEFORE PIT FLOOR IS POURED FOR DRAIN DELIVERY



HATCHED AREAS INDICATE BASEPLATE ANCHORAGE AREAS. ANY PIPING UNDER THESE LOCATIONS MUST BE 7" BELOW THE TOP OF SLAB.

ALL UNDERSLAB PIPING SHALL BE MARKED BY THE PLUMBING CONTRACTOR.

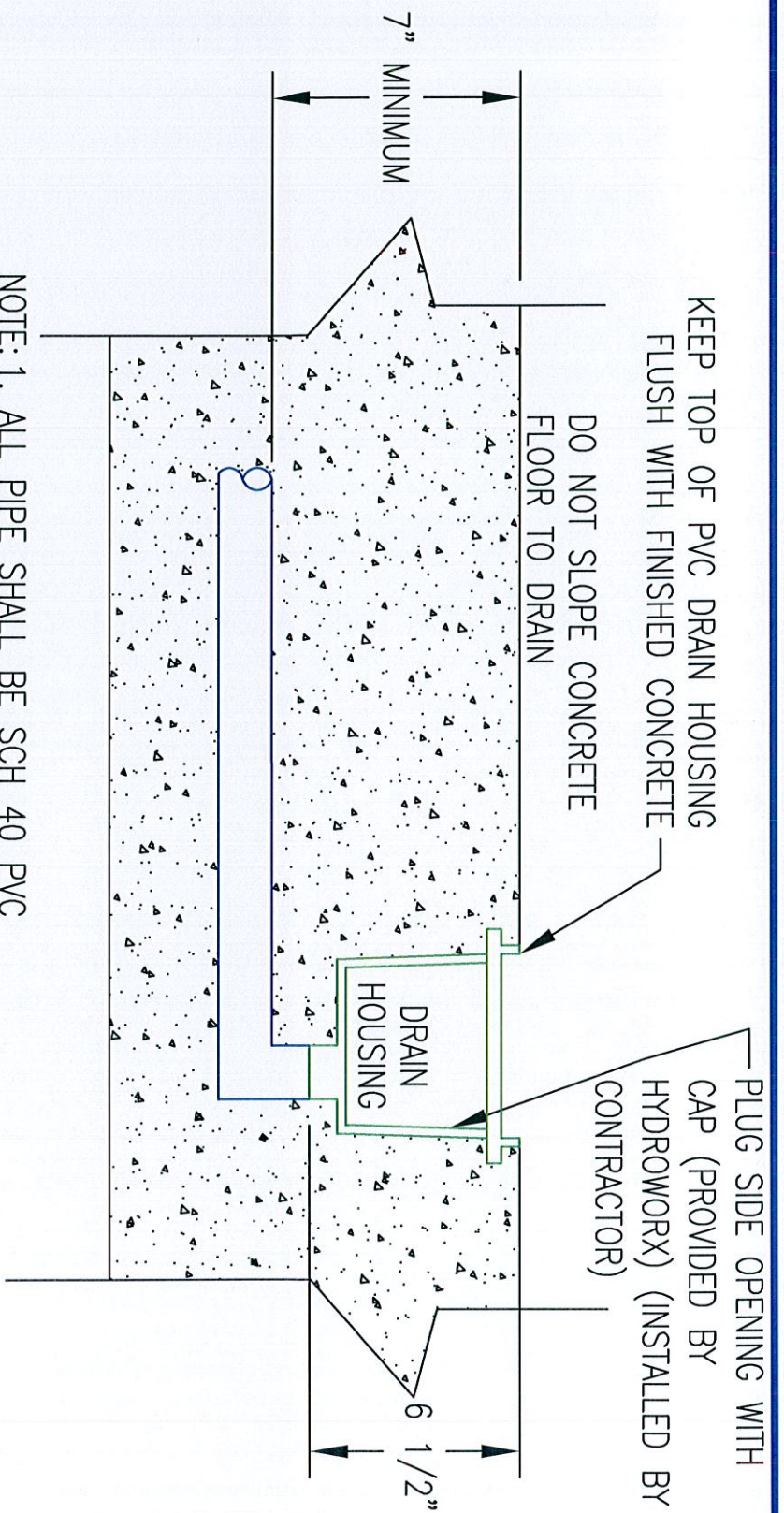
NOTE: THE TWO DRAINS ARE REQUIRED BY CODE TO BE PLUMBED THROUGH A TEE FITTING EQUIDISTANT FROM EACH DRAIN. TAKE CARE TO ENSURE THIS LAYOUT IS FOLLOWED.

1200-004	DATE	JANUARY 2013
DESIGNED BY: MM	REVISION	
DRAWN BY: NLL	SCALE	1/4" = 1'-0"

The design and information on this document are recommendations only – confidential – and disclosed to you on the condition that no further disclosure or use is made by you without authorization from HydroWorx International, Inc., Middletown, Pennsylvania.



HydroWorx® International, Inc.
 1200 Series - Drain Layout
 1420 Stoneridge Drive, Middletown, PA 17057; Telephone 1-800-753-9633; FAX 717-902-1933



NOTE: 1. ALL PIPE SHALL BE SCH 40 PVC
(PRESSURE TYPE) FASTENED WITH
HEAVY BODIED PVC GLUE (BY CONTRACTOR)

2. CONTACT HYDROWORX A MINIMUM
OF 2 WEEKS BEFORE PIT FLOOR IS
POURED FOR DRAIN DELIVERY
3. DRAWINGS ARE DIAGRAMMATIC AND
ARE NOT SPECIFIC TO ANY PROJECT

1200-005

NO.	JANUARY 2013	VERIFIED BY	MM
SCALE	NONE	DRAWN BY	NLL

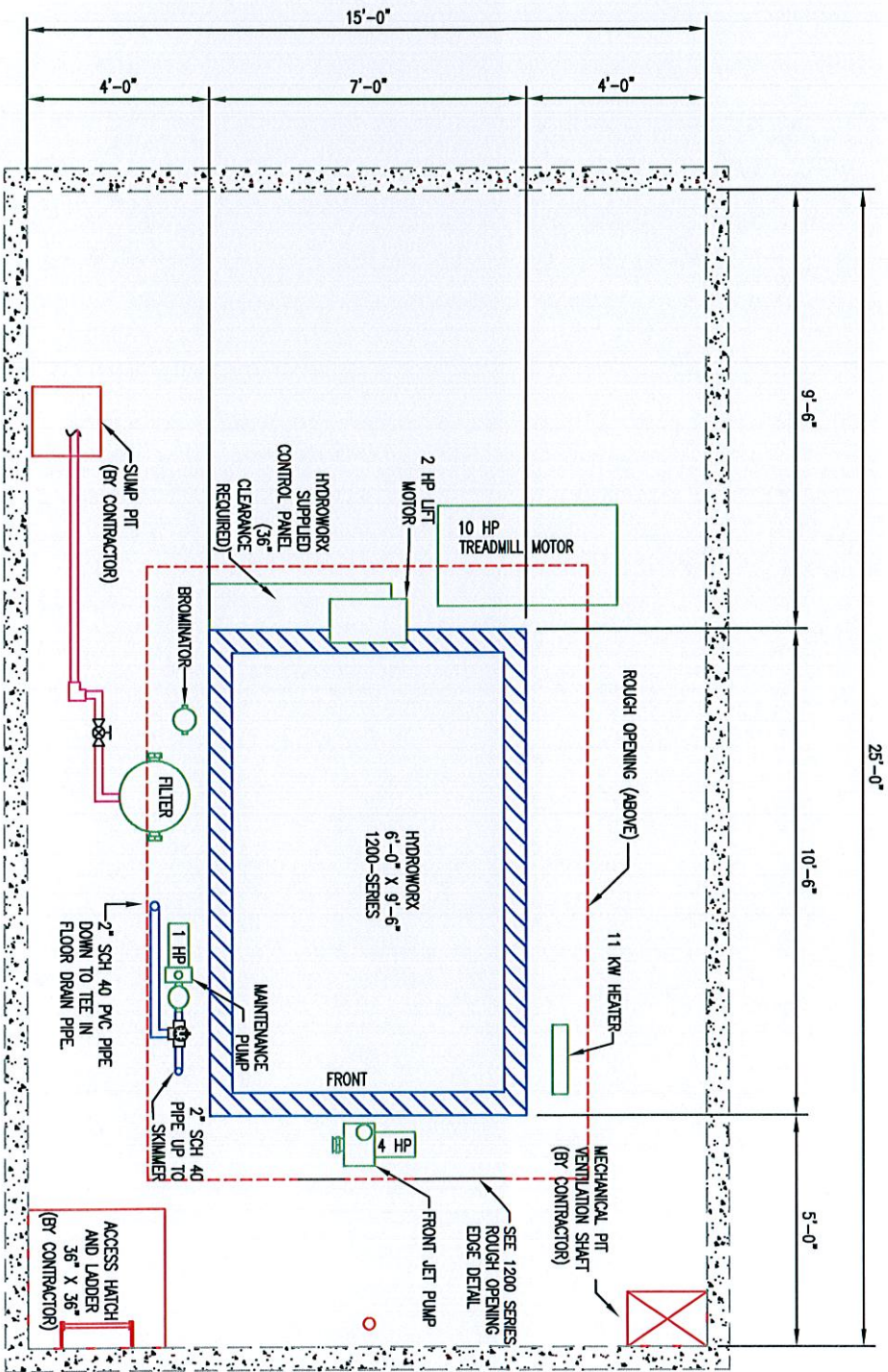
The design and information on this document are recommendations only - confidential - and disclosed to you on the condition that no further disclosure or use is made by you without authorization from HydroWorx International, Inc., Middletown, Pennsylvania.

1420 Stoneridge Drive, Middletown, PA 17057; Telephone 1-800-753-9633; FAX 717-902-1933



HydroWorx® International, Inc.

1200 Series - Drain Detail

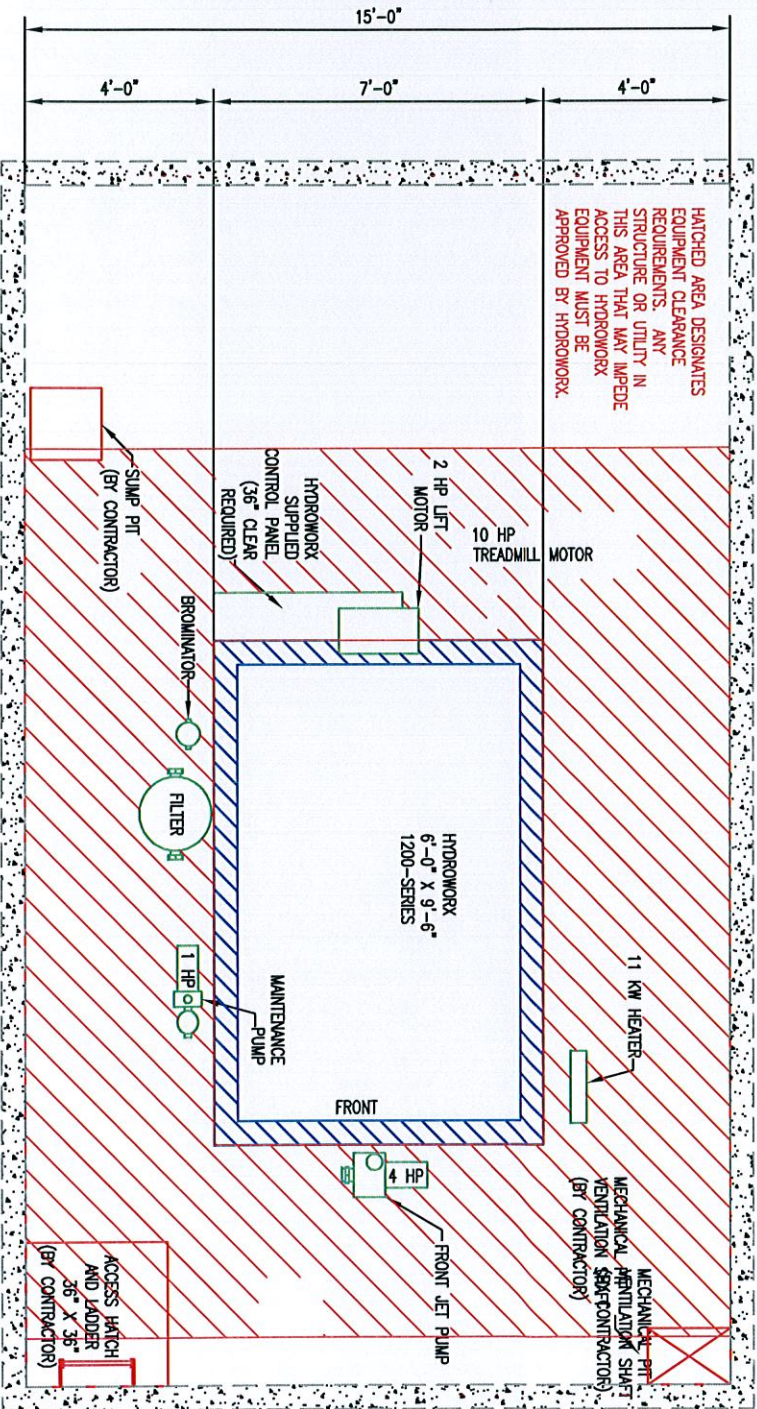


- NOTE: 1. DRAWINGS ARE DIAGRAMMATIC AND ARE NOT SPECIFIC TO ANY PROJECT
 2. IF POOL IS TO BE SET ON HOUSE PAD, THE PAD MUST EXTEND OUT TO KEEP TREADMILL MOTOR AND BOTTOM OF POOL AT SAME ELEVATION.

DATE	JANUARY 2013	DESIGNED BY	MM
SCALE	1/4" = 1'-0"	DRAWN BY	NLL
1200-006			

The design and information on this document are recommendations only - confidential - and disclosed to you on the condition that no further disclosure or use is made by you without authorization from HydroWorx International, Inc., Middletown, Pennsylvania.

1420 Stoneridge Drive, Middletown, PA 17057; Telephone 1-800-753-9633; FAX 717-902-1933



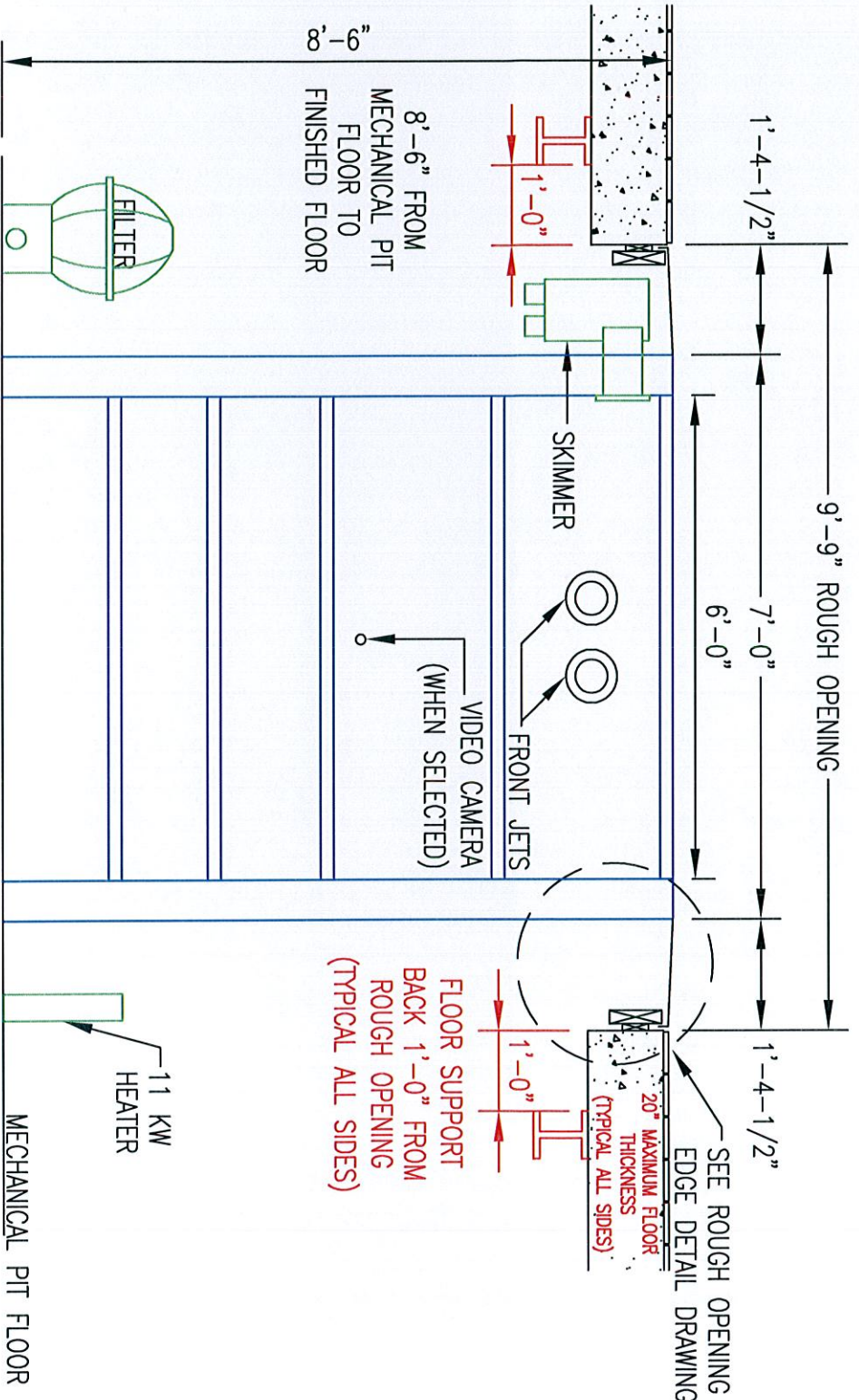
- NOTE 1:** DRAWINGS ARE DIAGRAMATIC AND ARE NOT SPECIFIC TO ANY PROJECT
- 2:** IF POOL IS TO BE SET ON HOUSE PAD, THE PAD MUST EXTEND OUT TO KEEP TREADMILL MOTOR AND BOTTOM OF POOL AT SAME ELEVATION.

1200-007	1200-007
DATE: JANUARY 2013	DESIGNED BY: NMI
SCALE: 1/4" = 1'-0"	DRAWN BY: NLL

The design and information on this document are recommendations only – confidential – and disclosed to you on the condition that no further disclosure or use is made by you without authorization from HydroWorx International, Inc., Middletown, Pennsylvania.

1420 Stoneridge Drive, Middletown, PA 17057; Telephone 1-800-753-9633; FAX 717-902-1933

MINIMUM 9' CLEAR CEILING HEIGHT REQUIRED



- NOTE: 1. REFER TO STRUCTURAL DRAWINGS FOR ACTUAL STRUCTURAL DESIGN
2. FLOOR THICKNESS AND STRUCTURAL SETBACKS MUST BE MAINTAINED FOR MAINTENANCE AND SERVICE (TYPICAL ALL SIDES) SEE DETAIL
3. DRAWINGS ARE DIAGRAMMATIC AND ARE NOT SPECIFIC TO ANY PROJECT

DATE	JANUARY 2013	DESIGNED BY	MM
SCALE	1/2" = 1'-0"	DRAWN BY	NLL
1200-008			

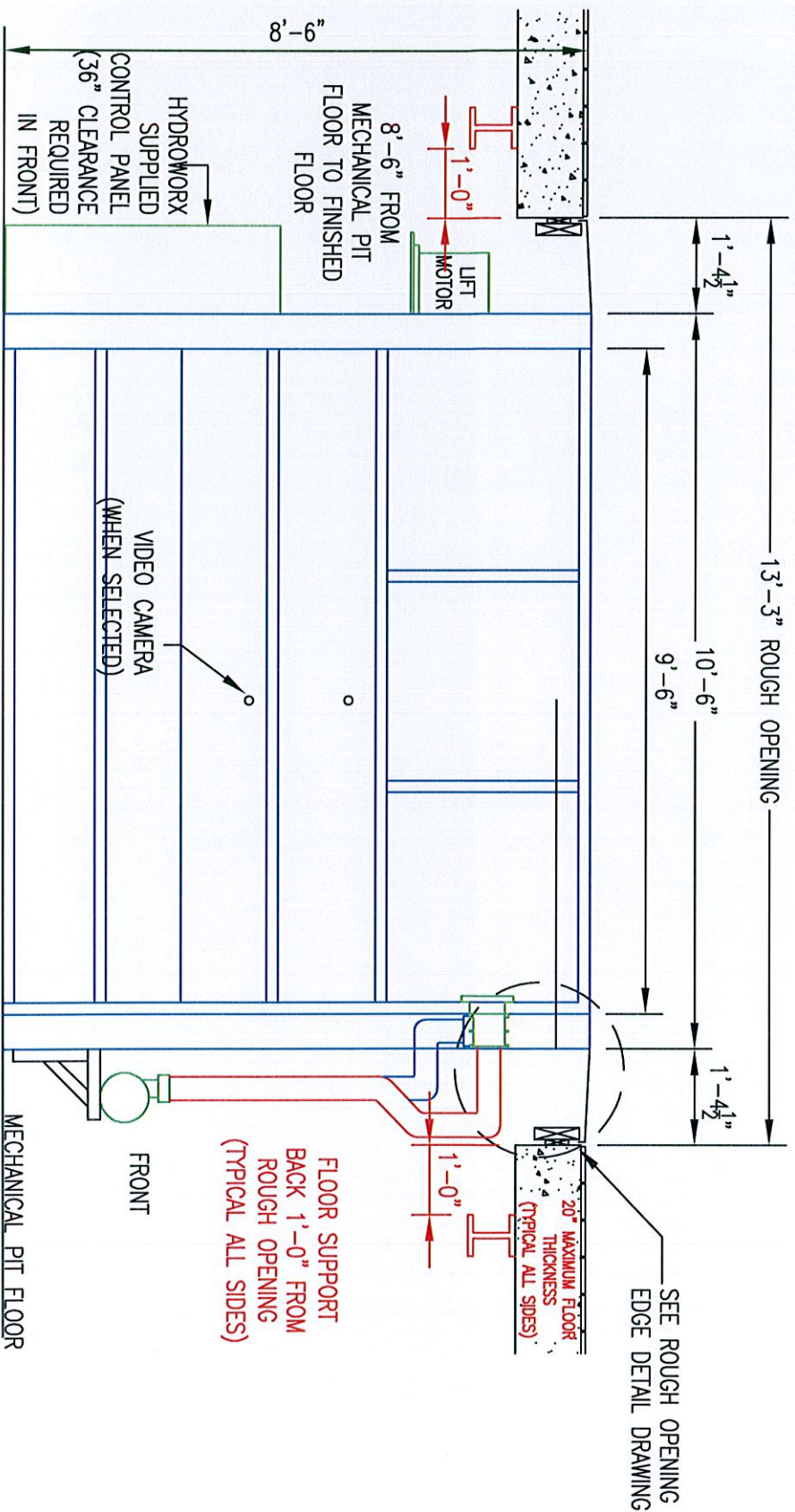
The design and information on this document are recommendations only - confidential - and disclosed to you on the condition that no further disclosure or use is made by you without authorization from HydroWorx International, Inc., Middletown, Pennsylvania.

HydroWorx® International, Inc.

1200 Series - Front Section View

1420 Stoneridge Drive, Middletown, PA 17057; Telephone 1-800-753-9633; FAX 717-902-1933

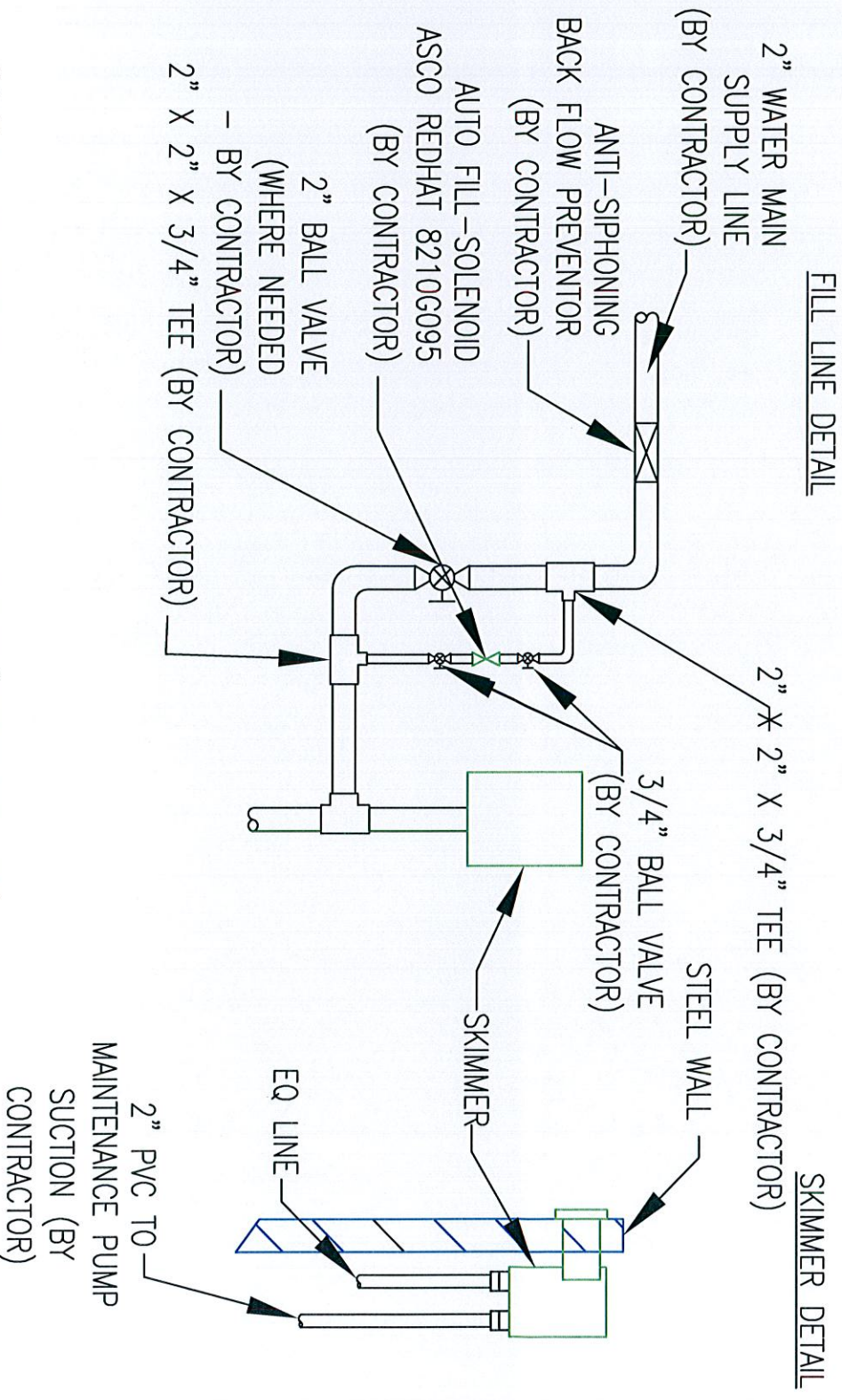
MINIMUM 9' CLEAR CEILING HEIGHT REQUIRED



- NOTE: 1. REFER TO STRUCTURAL DRAWINGS FOR ACTUAL STRUCTURAL DESIGN
 2. FLOOR THICKNESS AND STRUCTURAL SETBACKS MUST BE MAINTAINED FOR MAINTENANCE AND SERVICE (TYPICAL ALL SIDES) SEE DETAIL
 3. DRAWINGS ARE DIAGRAMMATIC AND ARE NOT SPECIFIC TO ANY PROJECT

1200-1099	
DATE: JANUARY 2013	DESIGNED BY: MM
SCALE: 3/8" = 1'-0"	DRAWN BY: NLL
The design and information on this document are recommendations only - confidential - and disclosed to you on the condition that no further disclosure or use is made by you without authorization from HydroWorx International, Inc., Middletown, Pennsylvania.	
1420 Stoneridge Drive, Middletown, PA 17057; Telephone 1-800-753-9633; FAX 717-902-1933	

HydroWorx® International, Inc.
 1200 Series - Right Side Section View



NOTE: 1. ALL PIPE SHALL BE SCH 40 PVC (PRESSURE TYPE) FASTENED WITH HEAVY BODIED PVC GLUE (BY OTHERS)

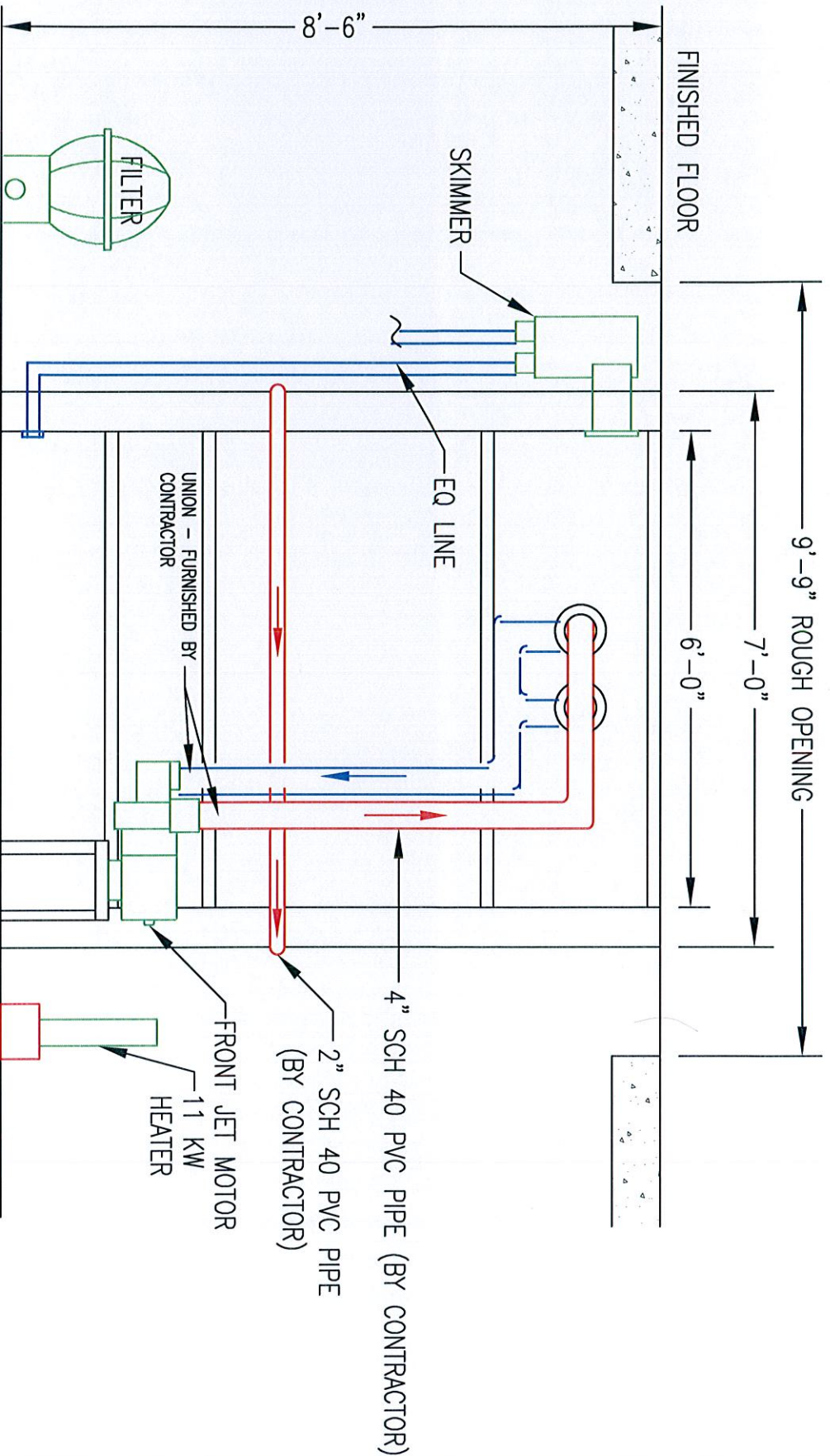
2. DRAWINGS ARE DIAGRAMMATIC AND ARE NOT SPECIFIC TO ANY PROJECT

DATE	JANUARY 2013	DESIGNED BY	MM
SCALE	NONE	DRAWN BY	NLL
1420 Stoneridge Drive, Middletown, PA 17057; Telephone 1-800-753-9633; FAX 717-902-1933			

The design and information on this document are recommendations only - confidential - and disclosed to you on the condition that no further disclosure or use is made by you without authorization from HydroWorx International, Inc., Middletown, Pennsylvania.

HydroWorx International, Inc.

1200 Series - Fill Line & Skimmer Detail



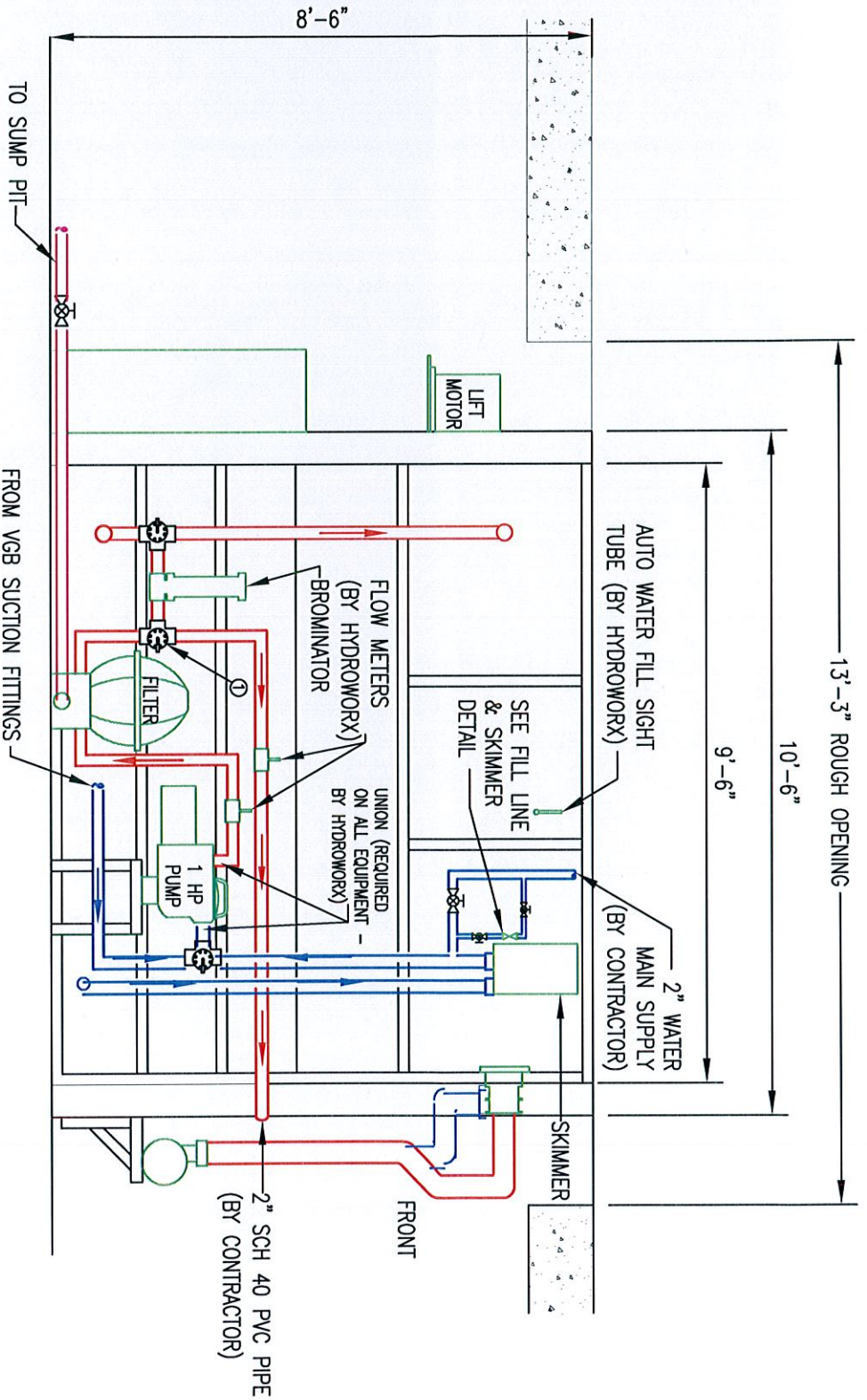
- NOTE:**
1. ALL PIPE SHALL BE SCHEDULE 40 PVC (PRESSURE TYPE) FASTENED WITH HEAVY BODIED PVC GLUE (BY CONTRACTOR)
 2. UNLESS OTHERWISE NOTED ALL PLUMBING INCLUDING PIPE, VALVES, FITTINGS, ETC. SHALL BE PROVIDED AND INSTALLED BY CONTRACTOR
 3. DRAWINGS ARE DIAGRAMMATIC AND ARE NOT SPECIFIC TO ANY PROJECT

1200U011	DESIGNED BY: MM	DATE: JANUARY 2013
1/2" = 1'-0"	DRAWN BY: NLL	SCALE: 1/2" = 1'-0"

1420 Stoneridge Drive, Middletown, PA 17057; Telephone 1-800-753-9633; FAX 717-902-1933

The design and information on this document are recommendations only - confidential - and disclosed to you on the condition that no further disclosure or use is made by you without authorization from HydroWorx International, Inc., Middletown, Pennsylvania.

HydroWorx® International, Inc.
 1200 Series - Front Plumbing



NOTE:

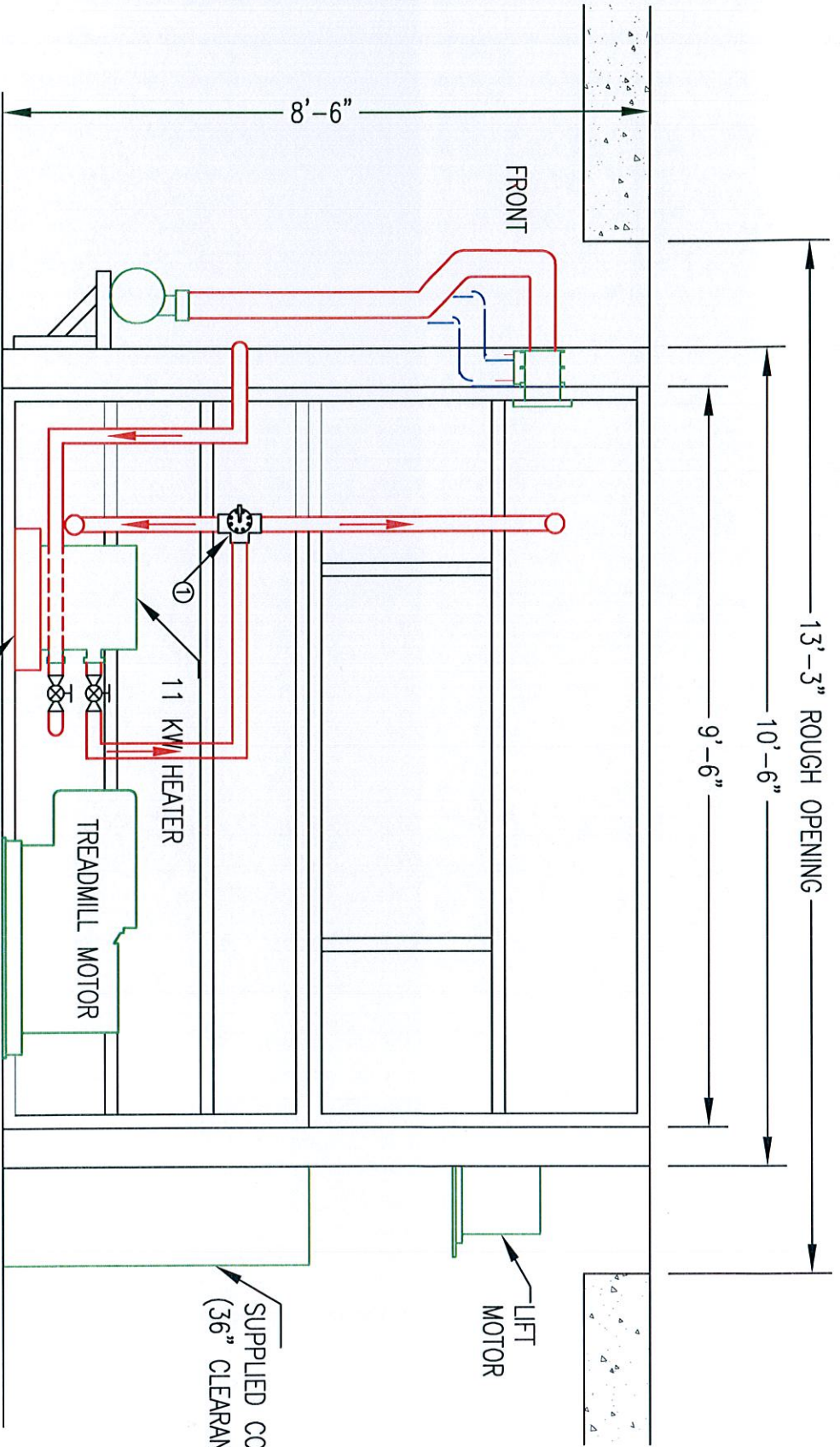
- ① JANDY NEVER LUBE 2"-2-1/2" THREE WAY CPVC VALVE (TYP.) (BY CONTRACTOR)
- 1. ALL PIPE SHALL BE SCHEDULE 40 PVC (PRESSURE TYPE) FASTENED WITH HEAVY BODIED PVC GLUE (BY CONTRACTOR)
- 2. UNLESS OTHERWISE NOTED ALL PLUMBING INCLUDING PIPE, VALVES, FITTINGS, ETC. SHALL BE PROVIDED AND INSTALLED BY CONTRACTOR
- 3. DRAWINGS ARE DIAGRAMMATIC AND ARE NOT SPECIFIC TO ANY PROJECT

DATE	1200-012
REV	JANUARY 2013
SCALE	3/8" = 1'-0"
DESIGNED BY	VERIFIED BY
DRAWN BY	NLL

The design and information on this document are recommendations only - confidential - and disclosed to you on the condition that no further disclosure or use is made by you without authorization from HydroWorx International, Inc., Middletown, Pennsylvania.

1420 Stoneridge Drive, Middletown, PA 17057; Telephone 1-800-753-9633; FAX 717-902-1933

HydroWorx® International, Inc.
1200 Series - Right Side Plumbing



NOTE:

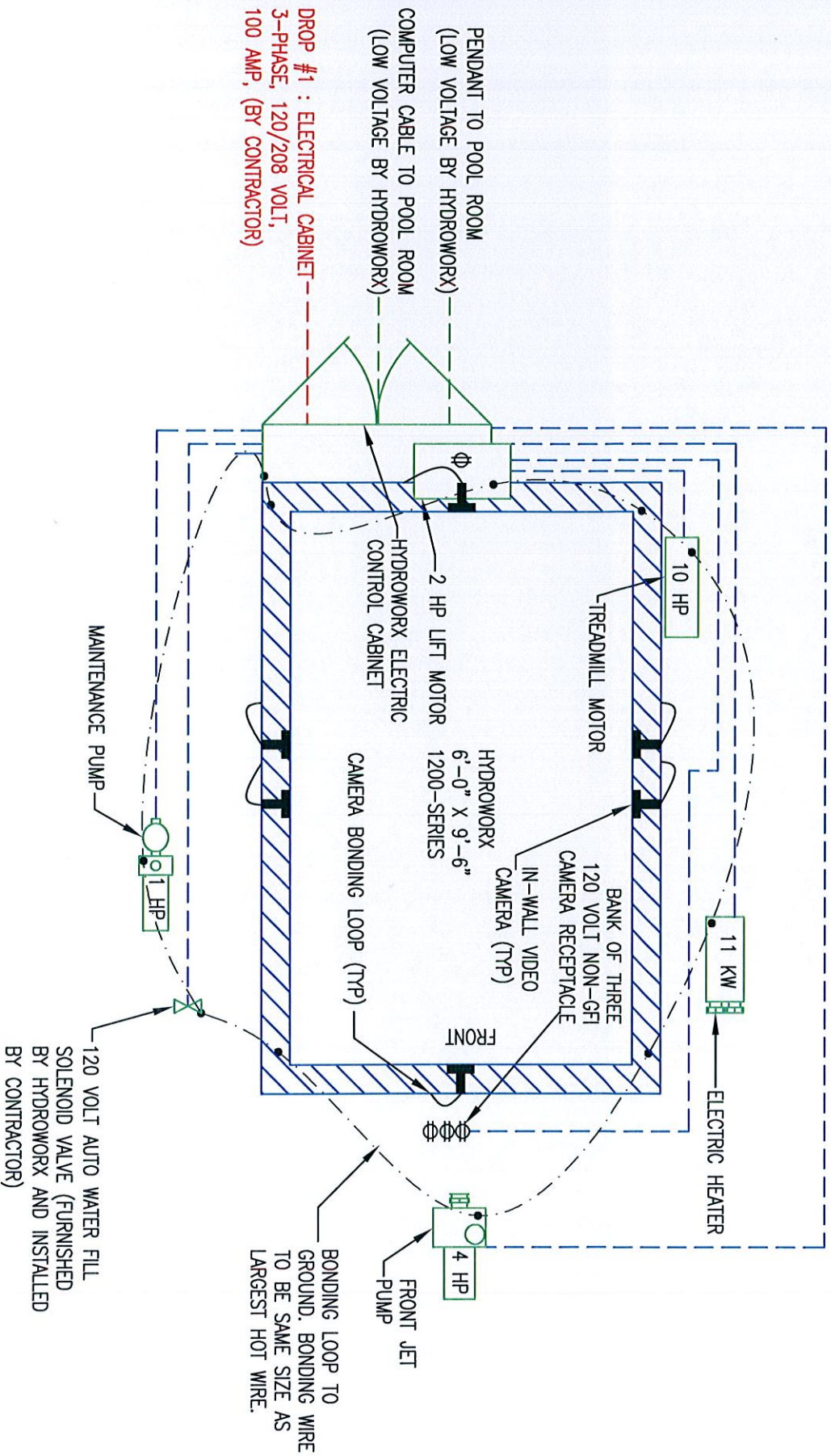
- ① JANDY NEVER LUBE 2" - 2-1/2" THREE WAY CPVC VALVE (TYP.) 6" OFF FLOOR (BY CONTRACTOR)
- 1. ALL PIPE SHALL BE SCHEDULE 40 PVC (PRESSURE TYPE) FASTENED WITH HEAVY BODIED PVC GLUE (BY CONTRACTOR)
- 2. UNLESS OTHERWISE NOTED ALL PLUMBING INCLUDING PIPE, VALVES, FITTINGS, ETC. SHALL BE PROVIDED AND INSTALLED BY CONTRACTOR

1200-013	
DATE: JANUARY 2013	DESIGNED BY: MM
SCALE: 1/2" = 1'-0"	DRAWN BY: NIL
1420 Stoneridge Drive, Middletown, PA 17057; Telephone 1-800-753-9633; FAX 717-902-1933	

The design and information on this document are recommendations only - confidential - and disclosed to you on the condition that no further disclosure or use is made by you without authorization from HydroWorx International, Inc., Middletown, Pennsylvania.

HydroWorx International, Inc.
1200 Series - Left Side Plumbing

NOTE: 1. UNLESS OTHERWISE NOTED ALL ELECTRICAL INCLUDING CONDUIT, WIRE, TERMINATIONS, TESTING, ETC. SHALL BE PROVIDED AND INSTALLED BY LICENSED ELECTRICIAN
 2. DRAWINGS ARE DIAGRAMMATIC AND ARE NOT SPECIFIC TO ANY PROJECT



DROP #1 : ELECTRICAL CABINET ---
 3-PHASE, 120/208 VOLT,
 100 AMP, (BY CONTRACTOR)

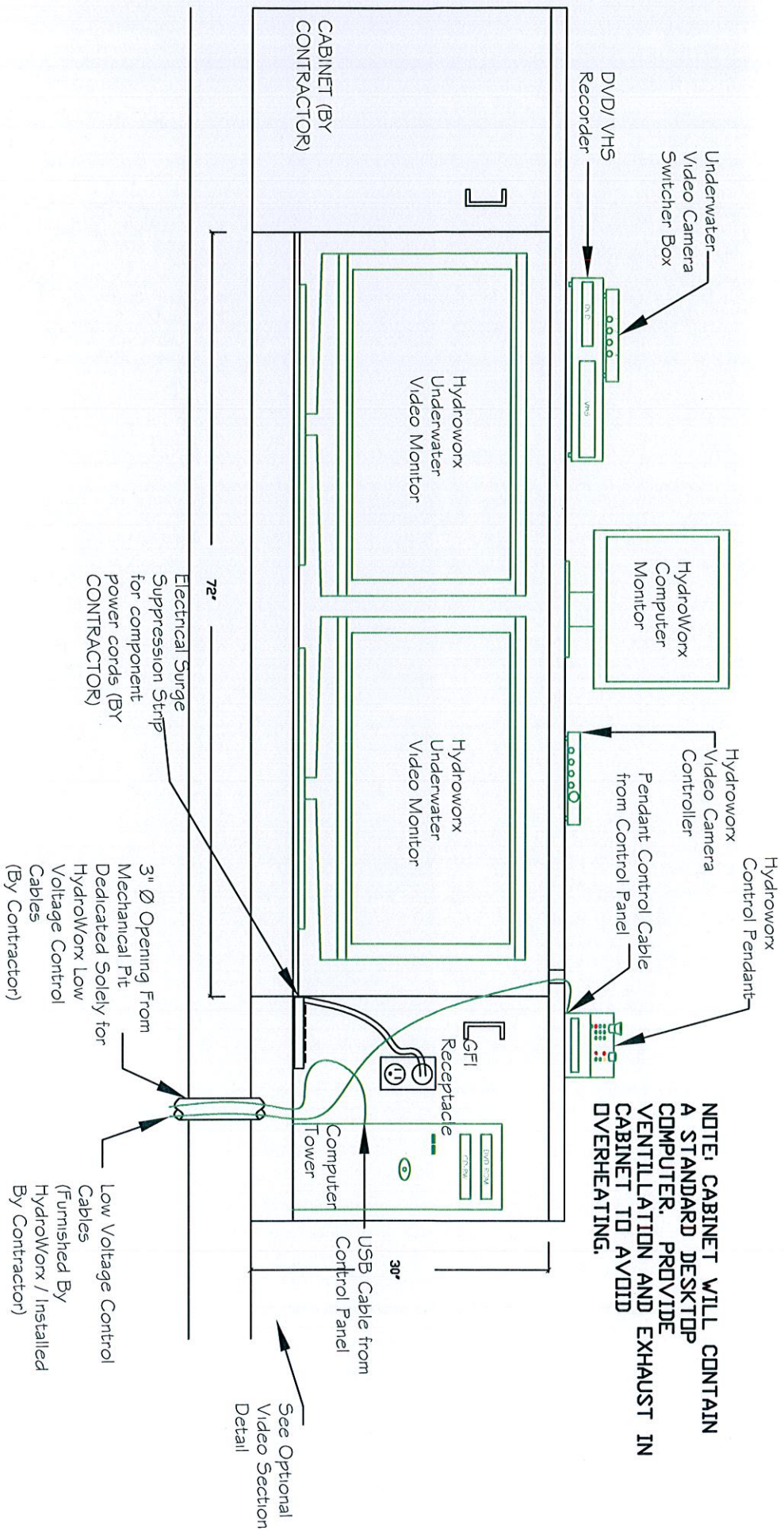
DATE	JANUARY 2013	1200-014
SCALE	3/8" = 1'-0"	VERIFIED BY: MM
		DRAWN BY: NLL

The design and information on this document are recommendations only - confidential - and disclosed to you on the condition that no further disclosure or use is made by you without authorization from HydroWorx International, Inc., Middletown, Pennsylvania.

1420 Stoneridge Drive, Middletown, PA 17057; Telephone 1-800-753-9633; FAX 717-902-1933

HydroWorx® International, Inc.
 1200 Series - Electrical

NOTE: 1. DRAWINGS ARE DIAGRAMMATIC AND ARE NOT SPECIFIC TO ANY PROJECT



DATE	JANUARY 2013	1200-015
SCALE	NONE	VERIFIED BY: MM
		DRAWN BY: NIL

The design and information on this document are recommendations only – confidential – and disclosed to you on the condition that no further disclosure or use is made by you without authorization from HydroWorx International, Inc., Middletown, Pennsylvania.





HydroWorx® International, Inc.

 1200 Series - Optional Video Layout

1420 Stoneridge Drive, Middletown, PA 17057; Telephone 1-800-753-9633; FAX 717-902-1933

LEGEND

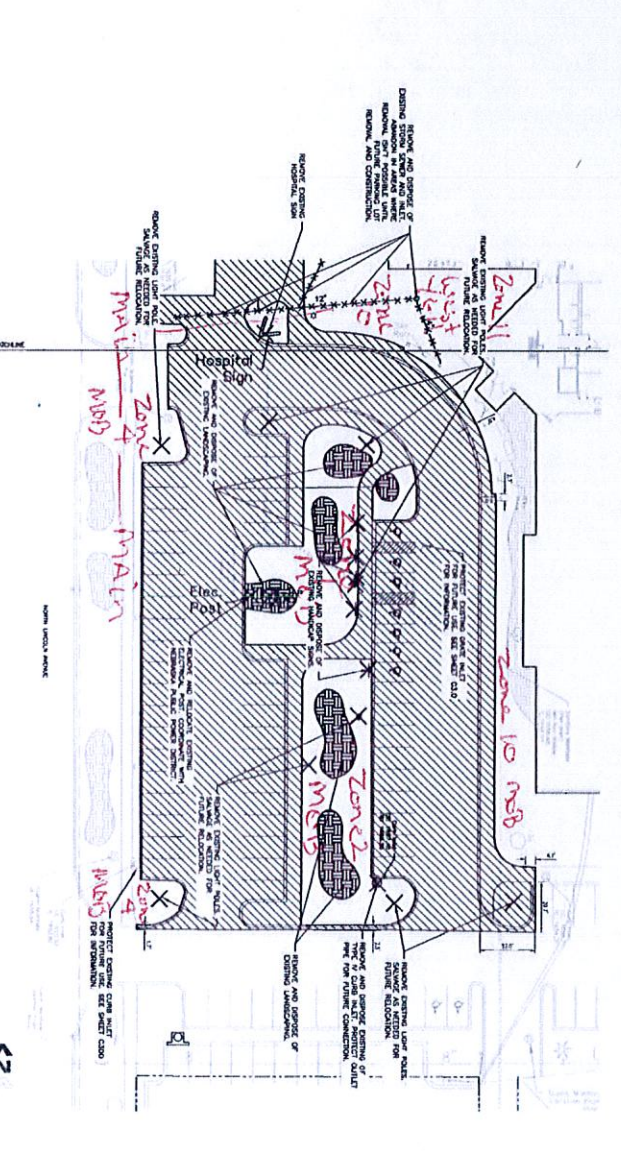
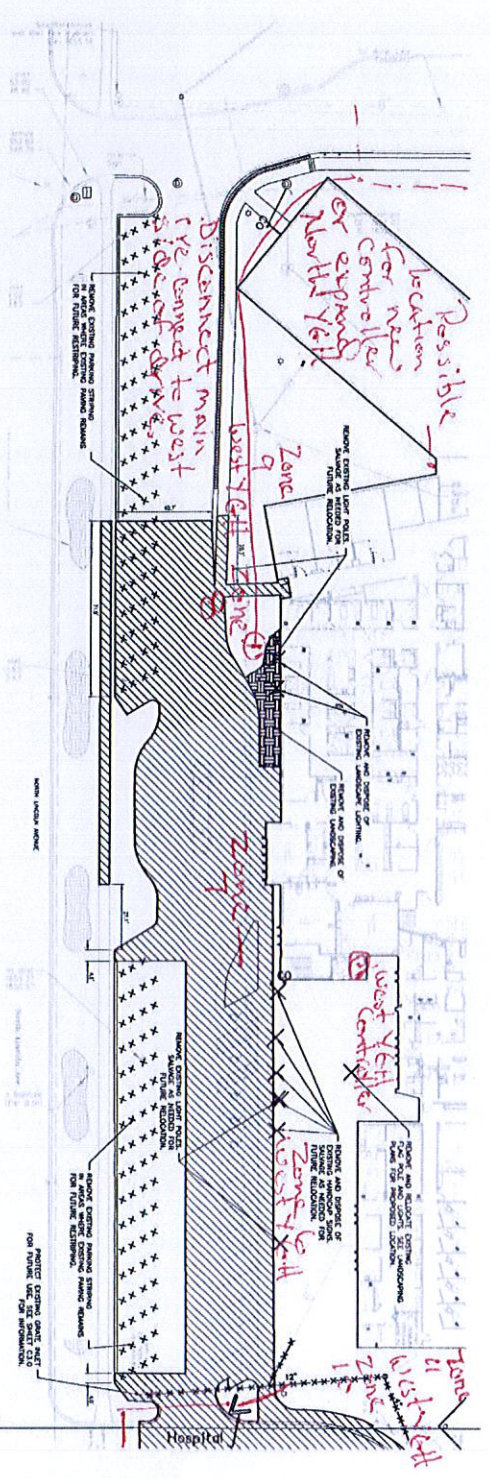
-  PARTIAL DEMOLITION
-  PHYSICAL FEATURE REMAINING
-  REMAINING STRUCTURE

SITE DEMOLITION NOTES

1. THE CONTRACTOR SHALL REMOVE ALL EXISTING MATERIALS TO BE DEMOLISHED AND SHALL BE RESPONSIBLE FOR THE PROPER DISPOSAL OF ALL DEMOLITION DEBRIS.
2. THE CONTRACTOR SHALL MAINTAIN ALL EXISTING UTILITIES UNLESS OTHERWISE NOTED.
3. THE CONTRACTOR SHALL MAINTAIN ALL EXISTING STRUCTURES UNLESS OTHERWISE NOTED.
4. THE CONTRACTOR SHALL MAINTAIN ALL EXISTING LANDSCAPE UNLESS OTHERWISE NOTED.
5. THE CONTRACTOR SHALL MAINTAIN ALL EXISTING DRIVEWAYS UNLESS OTHERWISE NOTED.
6. THE CONTRACTOR SHALL MAINTAIN ALL EXISTING SIDEWALKS UNLESS OTHERWISE NOTED.
7. THE CONTRACTOR SHALL MAINTAIN ALL EXISTING CURBS UNLESS OTHERWISE NOTED.
8. THE CONTRACTOR SHALL MAINTAIN ALL EXISTING STAIRS UNLESS OTHERWISE NOTED.
9. THE CONTRACTOR SHALL MAINTAIN ALL EXISTING ELEVATORS UNLESS OTHERWISE NOTED.
10. THE CONTRACTOR SHALL MAINTAIN ALL EXISTING MECHANICAL ROOMS UNLESS OTHERWISE NOTED.
11. THE CONTRACTOR SHALL MAINTAIN ALL EXISTING ELECTRICAL ROOMS UNLESS OTHERWISE NOTED.
12. THE CONTRACTOR SHALL MAINTAIN ALL EXISTING TELEPHONE ROOMS UNLESS OTHERWISE NOTED.
13. THE CONTRACTOR SHALL MAINTAIN ALL EXISTING DATA ROOMS UNLESS OTHERWISE NOTED.
14. THE CONTRACTOR SHALL MAINTAIN ALL EXISTING STORAGE ROOMS UNLESS OTHERWISE NOTED.
15. THE CONTRACTOR SHALL MAINTAIN ALL EXISTING OFFICES UNLESS OTHERWISE NOTED.
16. THE CONTRACTOR SHALL MAINTAIN ALL EXISTING LABORATORIES UNLESS OTHERWISE NOTED.
17. THE CONTRACTOR SHALL MAINTAIN ALL EXISTING OPERATING ROOMS UNLESS OTHERWISE NOTED.
18. THE CONTRACTOR SHALL MAINTAIN ALL EXISTING THEATERS UNLESS OTHERWISE NOTED.
19. THE CONTRACTOR SHALL MAINTAIN ALL EXISTING GYMNASIUMS UNLESS OTHERWISE NOTED.
20. THE CONTRACTOR SHALL MAINTAIN ALL EXISTING RECREATION AREAS UNLESS OTHERWISE NOTED.

GENERAL DEMOLITION NOTES

1. THE CONTRACTOR SHALL MAINTAIN ALL EXISTING UTILITIES UNLESS OTHERWISE NOTED.
2. THE CONTRACTOR SHALL MAINTAIN ALL EXISTING STRUCTURES UNLESS OTHERWISE NOTED.
3. THE CONTRACTOR SHALL MAINTAIN ALL EXISTING LANDSCAPE UNLESS OTHERWISE NOTED.
4. THE CONTRACTOR SHALL MAINTAIN ALL EXISTING DRIVEWAYS UNLESS OTHERWISE NOTED.
5. THE CONTRACTOR SHALL MAINTAIN ALL EXISTING SIDEWALKS UNLESS OTHERWISE NOTED.
6. THE CONTRACTOR SHALL MAINTAIN ALL EXISTING CURBS UNLESS OTHERWISE NOTED.
7. THE CONTRACTOR SHALL MAINTAIN ALL EXISTING STAIRS UNLESS OTHERWISE NOTED.
8. THE CONTRACTOR SHALL MAINTAIN ALL EXISTING ELEVATORS UNLESS OTHERWISE NOTED.
9. THE CONTRACTOR SHALL MAINTAIN ALL EXISTING MECHANICAL ROOMS UNLESS OTHERWISE NOTED.
10. THE CONTRACTOR SHALL MAINTAIN ALL EXISTING ELECTRICAL ROOMS UNLESS OTHERWISE NOTED.
11. THE CONTRACTOR SHALL MAINTAIN ALL EXISTING TELEPHONE ROOMS UNLESS OTHERWISE NOTED.
12. THE CONTRACTOR SHALL MAINTAIN ALL EXISTING DATA ROOMS UNLESS OTHERWISE NOTED.
13. THE CONTRACTOR SHALL MAINTAIN ALL EXISTING STORAGE ROOMS UNLESS OTHERWISE NOTED.
14. THE CONTRACTOR SHALL MAINTAIN ALL EXISTING OFFICES UNLESS OTHERWISE NOTED.
15. THE CONTRACTOR SHALL MAINTAIN ALL EXISTING LABORATORIES UNLESS OTHERWISE NOTED.
16. THE CONTRACTOR SHALL MAINTAIN ALL EXISTING OPERATING ROOMS UNLESS OTHERWISE NOTED.
17. THE CONTRACTOR SHALL MAINTAIN ALL EXISTING THEATERS UNLESS OTHERWISE NOTED.
18. THE CONTRACTOR SHALL MAINTAIN ALL EXISTING GYMNASIUMS UNLESS OTHERWISE NOTED.
19. THE CONTRACTOR SHALL MAINTAIN ALL EXISTING RECREATION AREAS UNLESS OTHERWISE NOTED.
20. THE CONTRACTOR SHALL MAINTAIN ALL EXISTING UTILITIES UNLESS OTHERWISE NOTED.



CALL BEFORE YOU DIG
 1-800-331-5666
 811
 344-3565

YORK GENERAL HEALTH CARE SERVICES

Specialized Engineering Solutions

SEAS

Stamps

TBE

ALTIUS

Demolition Plan

C100

MOB Irrigation**Odd days****9:00 PM**

Zone	Area	Run Time	Temp
1	Center Island-south 1/2	30	
2	Center Island-north 1/2	30	
3	Lincoln Ave-street side	30	
4	Lincoln Ave-sidewalk side	30	
5	SW parking-west	20	
6	SW parking-south	15	
7	SW parking-north	15	
8	SE parking-north & south	15	
9	SE parking-east side	15	
10	West side of MOB	20	
11	SW corner of MOB	30	
12	SE corner of MOB	30	
13	East of MOB	15	
14	TBD (was next to chiller-north)	unavailable	
15	TBD (was east side of old HIM)	unavailable	
16	TBD (Pet scan area)	unavailable	
	Missing next to chiller-south	unavailable	
	North Box	Odd	7:00
1	Drip ???	unavailable	20
2	Dietary/drip system		30
3	Drip	unavailable	20

Notes: Existing 2" Main runs around perimeter of bld. Will need to cut and run line to west side of drive. A new 2" main should be anticipated along west side of hospital up to middle acces off Lincoln Ave. West YGH controller will need to be relocated or North YGH controller will need to be added to.

WEST YGH**Even****11:00 PM**

Zone	Area	Run Time	Temp
1	North of Entrance/Lincoln Ave	20	
2	South of Entrance/Lincoln Ave	30	
3	North of Entrance/Along walk	30	
4	South of Entrance/Along walk	30	
5	Island with sign by south drive	15	
6	West side of SPC & Flag pole		
7	Island south of entrance	20	
8	North of entrance to OB wing	20	
9	Between LDR & 120's hall		
10	South side of SPC/west of MOB ent	20	
11	Planters south of SPC/west of MOB ent-drip	20	

North YGH**ODD****6:00 PM**

Zone	Area	Run Time	Temp
1	Between ER & NE patient wing	30	
2	NE wing planters-drip ???	30	
3	Prgm B-used		
4	Prgm A-used		
5	Prgm A-used		
6	Prgm A-used		
7	Prgm A-used		
8			

North Employee Parking**Even****4:50 PM**

Zone	Area	Run Time	Temp
1		45	
2		30	
3		30	
4		45	
5		45	
6		45	
7			
8			