

CONSULTANTS:

Structural Engineer:
 R.O. YOUKER, INC.
 1201 1st STREET, SUITE 310
 LINCOLN, NE 68508
 Tel.: 402.477.7640
 Fax: 402.477.7631

Mechanical / Electrical Engineer:
 OLSSON ASSOCIATES
 1111 LINCOLN MALL SUITE 111
 LINCOLN, NE 68501
 Tel.: 402.474.6311
 Fax: 402.474.5063

Civil Engineer:
 REGA ENGINEERING GROUP, INC.
 1620 S. 70th STREET, SUITE 103
 LINCOLN, NE 68506
 Tel.: 402.484.7342
 www.REGAengineering.com

Geotechnical Engineer:
 TWIN RIVERS TESTING & ENVIRONMENTAL
 602 EAST WALKER RD.
 NORTH PLATTE, NE 69101
 Tel.: 308.534.5131
 Fax: 308.534.1226

ADA Consultant:
 BAF CONSULTING INC.
 241 SNOWBERRY RD.
 LINCOLN, NE 68521
 Tel.: 402.472.4274

THIS DOCUMENT WAS ORIGINALLY ISSUED AND SEALED BY DANIEL J. ROSENTHAL, E-7588 ON 02.03.2014. THIS MEDIA SHOULD NOT BE CONSIDERED A CERTIFIED DOCUMENT.

UTILITY PLAN

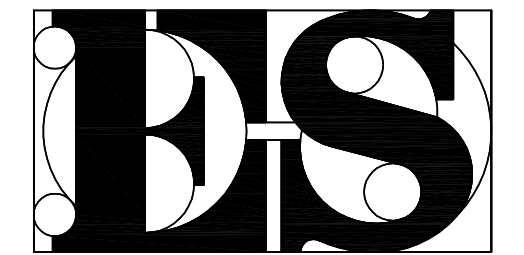
NDOR PALISADE MAINTENANCE FACILITY

NDOR YARD NO. 72800
 VEHICLE SHOP & OFFICE - BUILDING NO. 72801
 SLB SALT STORAGE - BUILDING NO. 72802
 PALISADE, NE

NDOR PROJECT NO. AFE K-700
 ESA PROJECT NO. 21013

CONSTRUCTION SET

DATE: FEBRUARY 3, 2014



ERICKSON SULLIVAN
 ARCHITECTS

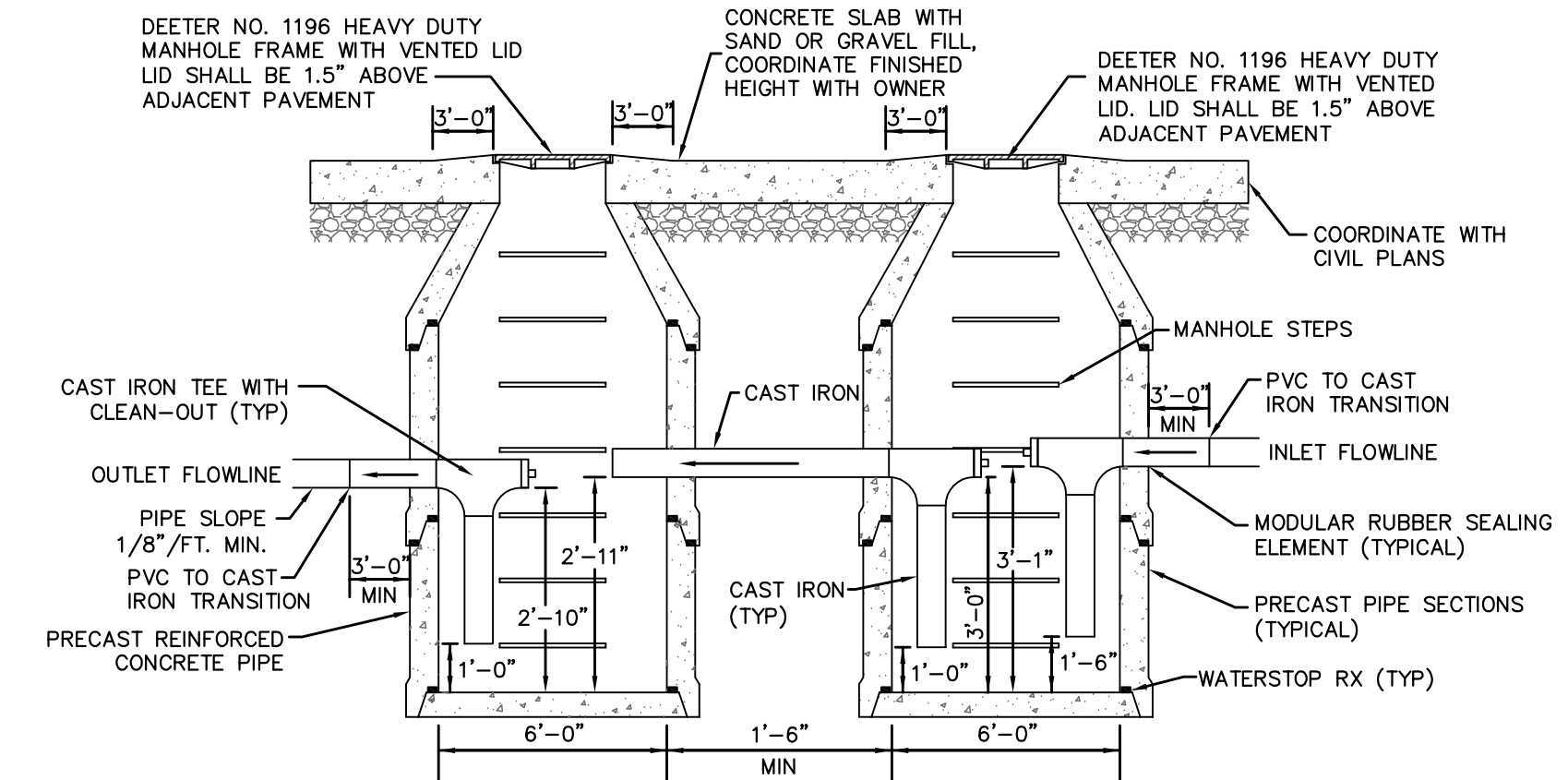
209 South 9th Street
 Lincoln, NE 68508

Tel: 402.475.1787 Fax: 402.475.1800

C104R

UTILITY NOTES:

- CONTRACTOR SHALL PROVIDE ALL BENDS, TEES, ELBOW, BACKING BLOCKS AND CORPORATION STOPS AS REQUIRED BY LOCAL CODES TO PROVIDE A FULLY FUNCTIONAL WATER SUPPLY SYSTEM WHETHER SHOWN ON THE DRAWINGS OR NOT. ALL WATER SUPPLY FIXTURES SHALL BE SUPPLIED, INSTALLED AND LOCATED IN ACCORDANCE WITH THE "TEN STATE STANDARDS" AND LOCAL CODES GOVERNING CONSTRUCTION. ADJUST FIXTURE LOCATION AS REQUIRED TO MEET CODE REQUIREMENTS. THE CONTRACTOR SHALL CONTACT THE LINCOLN WATER SUPPLY FOR ITEMS PROVIDED BY THEM.
- ALL SANITARY LINES AND FITTINGS SHALL BE ASTM D-3034, TYPE PSM, SDR 35. PVC.
- PIPE AND FITTINGS 3" AND SMALLER TO BE EITHER PVC SCHEDULE 40 W/SOLVENT WELD JOINTS, POLY PIPE. ALL PIPE SIZES SHOWN ARE INSIDE DIAMETER.
- ALL WATER MAINS SHALL HAVE A MINIMUM COVER OF 5'-0" ABOVE TOP OF PIPE.
- THRUST BLOCKS SHALL BE PROVIDED AT ALL BENDS, TEES AND FIRE HYDRANTS. SEE DETAIL 9 ON SHEET 200.
- BED ALL SANITARY, STORM SEWER AND WATER LINES AS SHOWN ON SHEET C200.
- DIMENSIONS SHOWN ARE TO CENTERLINE OF PIPES OR FITTINGS AND ARE FROM PROPERTY LINES, CENTERLINES OF DRIVEWAYS, BACK OF CURBS, EDGES OF SIDEWALKS OR FACES OF WALLS.
- ALL WATER MAINS SHALL BE HYDROSTATICALLY TESTED AND DISINFECTED BEFORE ACCEPTANCE.
- ALL GATE VALVES SHALL BE PROVIDED WITH ROADWAY SCREW TYPE CAST IRON VALVE BOX. BOXES FOR 3" AND SMALLER SHALL HAVE ARCH BASE.
- VALVES LESS THAN 4" SHALL BE BRONZE WEDGE TYPE GATE VALVE. VALVES SHALL HAVE NON-RISING STEM WITH SOLID TEE HEAD OPERATING NUT.
- UTILITY CONTRACTOR SHALL HAVE APPROVAL OF ALL GOVERNING AGENCIES HAVING JURISDICTION OVER THE SYSTEM PRIOR TO INSTALLATION.
- SANITARY SEWER CONSTRUCTION SHALL BE IN ACCORDANCE WITH THE LATEST EDITION OF THE NEBRASKA DEPARTMENT OF ROADS STANDARD SPECIFICATIONS FOR MUNICIPAL CONSTRUCTION.
- THE "TEN STATE STANDARDS" FOR SEWER AND WATER SEPARATION SHALL BE CONFORMED TO.
- CONCRETE FOR MANHOLES SHALL BE AS PER NEBRASKA DEPARTMENT OF ROADS STANDARD SPECIFICATIONS.
- ALL SANITARY & WATER LINES TERMINATE 5'-0" OUTSIDE BUILDING UNLESS NOTED ON PLANS FOR CONTINUATION SEE MECHANICAL PLANS.
- ALL SANITARY SEWER MANHOLES SHALL HAVE SOLID TYPE COVERS.
- THE CONTRACTOR SHALL REINFORCE ALL PIPE ENTRANCES OF CAST-IN-PLACE STRUCTURES WITH 4 EACH NO.4 REBARS 3" FROM EDGE DIAGONALLY AROUND THE PIPE.
- THE PRICE OF ALL CONCRETE COLLARS SHALL BE INCLUDED IN THE UNIT BID PRICE FOR THE RESPECTIVE SIZE PIPES. NO SEPARATE PAYMENT WILL BE MADE.
- ALL SANITARY SEWER PIPE SHALL BE BEDDED IN ACCORDANCE WITH THE BEDDING DETAILS AS SHOWN ON THE PLANS.
- THE CONTRACTOR SHALL BACKFILL COMPLETED AND ACCEPTED PORTIONS OF CONSTRUCTED SEWER AT THE END OF EACH DAY. EXCAVATED TRENCH REMAINING OPEN SHALL NOT EXCEED 25 FEET. THE CONTRACTOR SHALL PLACE SNOW FENCE AROUND EXCAVATION AND STRUCTURES REMAINING OPEN.
- THE SEWER SHALL BE CONSTRUCTED WITHIN THE EASEMENTS AND RIGHT OF WAY (ROW) SHOWN ON THE PLANS AND AS STAKED BY THE ENGINEER. ALL MATERIAL AND EQUIPMENT SHALL BE KEPT WITHIN THE LIMITS OF THE CONSTRUCTION EASEMENT.
- INSTALL WATER STOPS ON ALL PVC/ABS PIPE WHERE CONNECTING TO MANHOLES AND/OR INLET STRUCTURES.
- THE CONTRACTOR SHALL PERFORM AIR AND WATER LEAKAGE TESTS IN ACCORDANCE WITH THE SPECIFICATIONS.
- CONTRACTOR SHALL USE WATERTITE PIPE FOR STORM SEWER LINE.
- CONTRACTOR SHALL SEED ALL DISTURBED AREAS. SEE NOTE 22 ON C101



1 OIL SEPARATOR PIT
 NO SCALE

LEGEND

- PROPERTY LINE
- W --- WATER LINE
- S --- PROPOSED SANITARY SEWER LINE
- SS --- PROPOSED STORM SEWER LINE
- C --- UNDERGROUND ELECTRICAL CONDUITS WITH PULL STRING. (SEE SHEET E100 FOR MORE INFORMATION ON CONDUIT SIZES AND ELECTRICAL/DATA INFORMATION.)
- WATER VALVE (7 C200)
- CLEANOUT, SEE DETAIL (2 C202, 3 C202)
- ROOF DRAIN (SEE ARCHITECTURAL PLANS FOR FURTHER INFORMATION.)
- ▬ SPLASH BLOCKS (SEE ARCHITECTURAL PLANS FOR FURTHER INFORMATION.)

Retain the Location Request Number for YOUR Own Protection!



NOTE: UNDERGROUND UTILITY LOCATIONS SHOWN ARE FROM INFORMATION PROVIDED TO US FROM UTILITY COMPANIES. UTILITY COMPANIES MAKE NO WARRANTIES OR GUARANTEES REGARDING THE ACCURACY OF THE INFORMATION CONTAINED IN THEIR DOCUMENTS AND PROVIDES IT ONLY AS GENERAL INFORMATION TO THE RECEIVER. FOR SPECIFIC LOCATIONS DURING CONSTRUCTION CALL "DIGGERS HOTLINE" 1-800-331-5666 (STATEWIDE) PRIOR TO DIGGING.

REGA
 ENGINEERING GROUP, INC.

1620 S. 70th Street, Suite 103
 LINCOLN, NEBRASKA 6806
 (402).484.7342

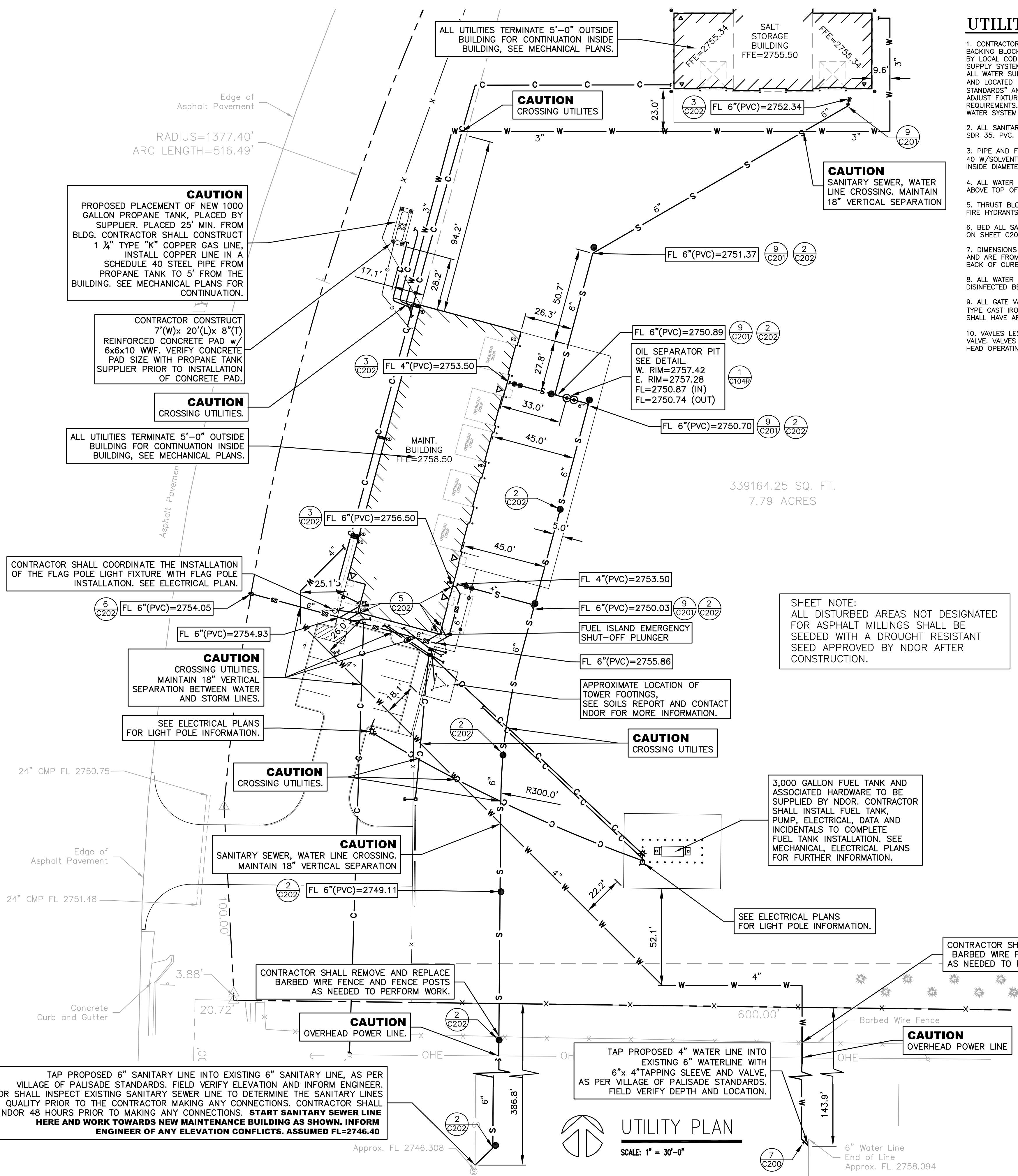
- ENGINEERING
- PLANNING

REGA NO. 131073

ISSUED FOR:	DATE:	BY:	REVIEW BY:
65% REVIEW SET	12/18/13	SDB/NB	NB/DR
95% REVIEW SET	01/15/14	SDB/NB	NB/DR
100% CONSTRUCTION SET	02/03/14	SDB/NB	NB/DR
REV. SANITARY, WATER, SSB FLR ELEV.	02/11/14	SDB/NB	NB/DR

BENCHMARK

- #1 5/8" REBAR NORTHWEST PROPERTY CORNER
- #2 3/4" REBAR SOUTHEAST PROPERTY CORNER



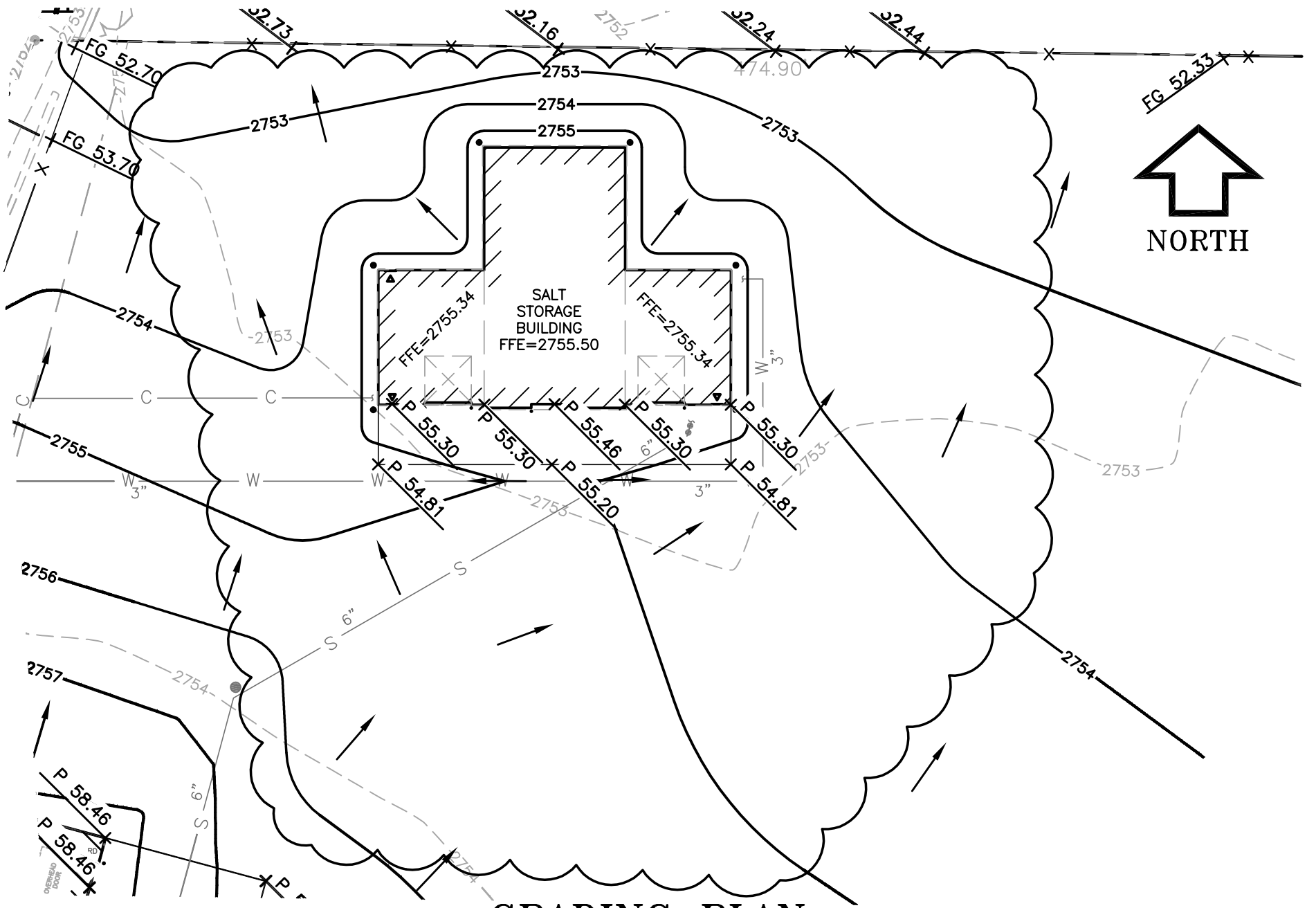
SHEET NOTE:
 ALL DISTURBED AREAS NOT DESIGNATED FOR ASPHALT MILLINGS SHALL BE SEEDED WITH A DROUGHT RESISTANT SEED APPROVED BY NDOR AFTER CONSTRUCTION.

3,000 GALLON FUEL TANK AND ASSOCIATED HARDWARE TO BE SUPPLIED BY NDOR. CONTRACTOR SHALL INSTALL FUEL TANK, PUMP, ELECTRICAL, DATA AND INCIDENTALS TO COMPLETE FUEL TANK INSTALLATION. SEE MECHANICAL, ELECTRICAL PLANS FOR FURTHER INFORMATION.

UTILITY PLAN

SCALE: 1" = 30'-0"

TAP PROPOSED 6" SANITARY LINE INTO EXISTING 6" SANITARY LINE, AS PER VILLAGE OF PALISADE STANDARDS. FIELD VERIFY ELEVATION AND INFORM ENGINEER. NDOR SHALL INSPECT EXISTING SANITARY SEWER LINE TO DETERMINE THE SANITARY LINES QUALITY PRIOR TO THE CONTRACTOR MAKING ANY CONNECTIONS. CONTRACTOR SHALL CONTACT NDOR 48 HOURS PRIOR TO MAKING ANY CONNECTIONS. **START SANITARY SEWER LINE HERE AND WORK TOWARDS NEW MAINTENANCE BUILDING AS SHOWN. INFORM ENGINEER OF ANY ELEVATION CONFLICTS. ASSUMED FL=2746.40**



GRADING PLAN

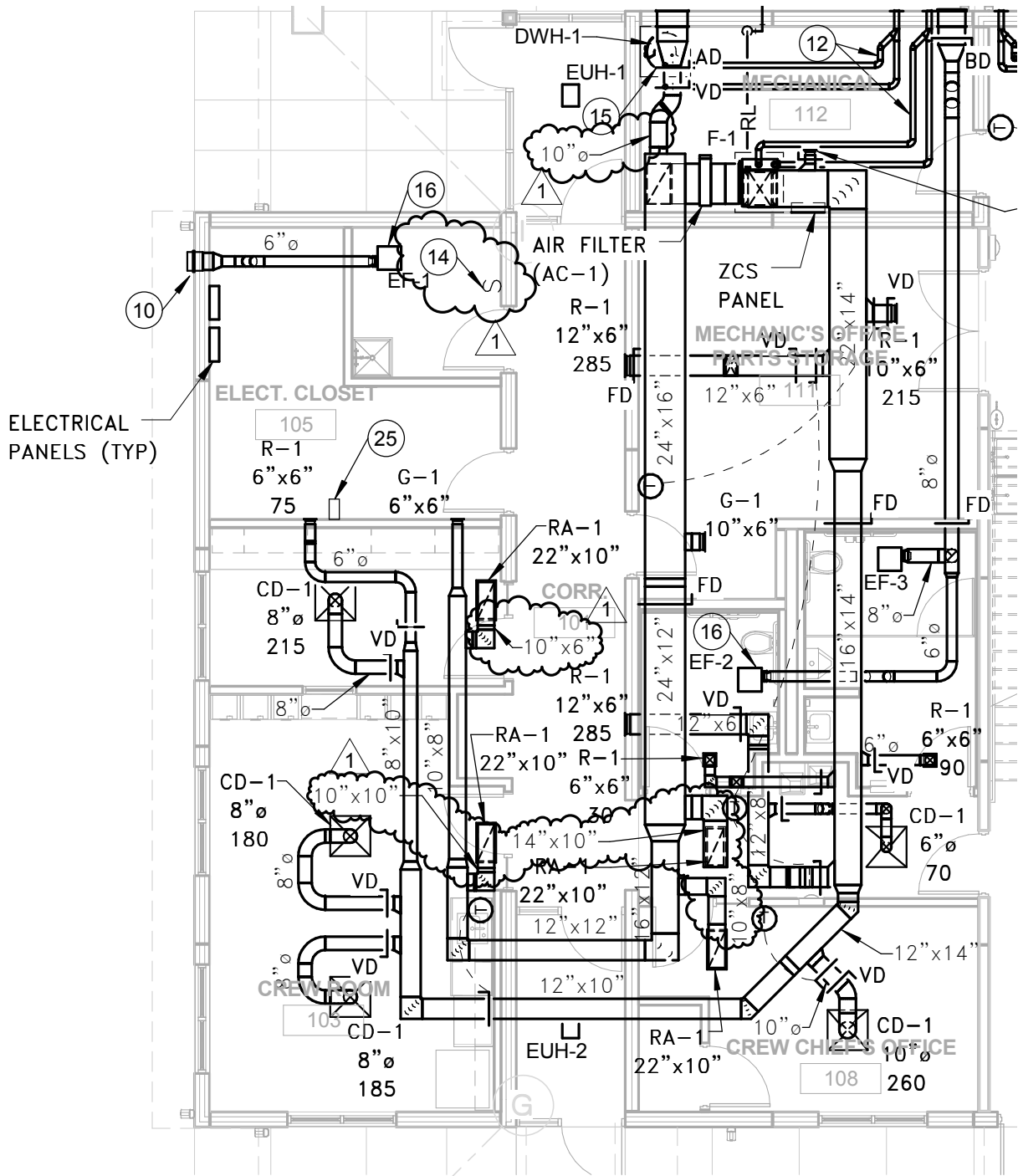
SCALE: 1" = 40'

REGA NO. 131073

ISSUED FOR:	DATE:	BY:
REVISED FINISH FLOOR ELEVATION OF SALT STORAGE BUILDING	02/11/14	SDB

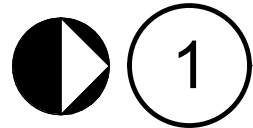
REF. SHT# C103

REGA
ENGINEERING
GROUP, INC.



SHEET NOTES: (SYMBOLS ①, ②, ETC.)

① 14. PROVIDE LOW-VOLTAGE MANUAL 1-POLE SWITCH FOR EF-1, SEE EQUIPMENT CONTROLS SCHEDULE ON THIS SHEET FOR OPERATION.



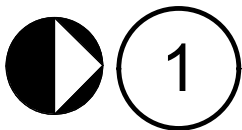
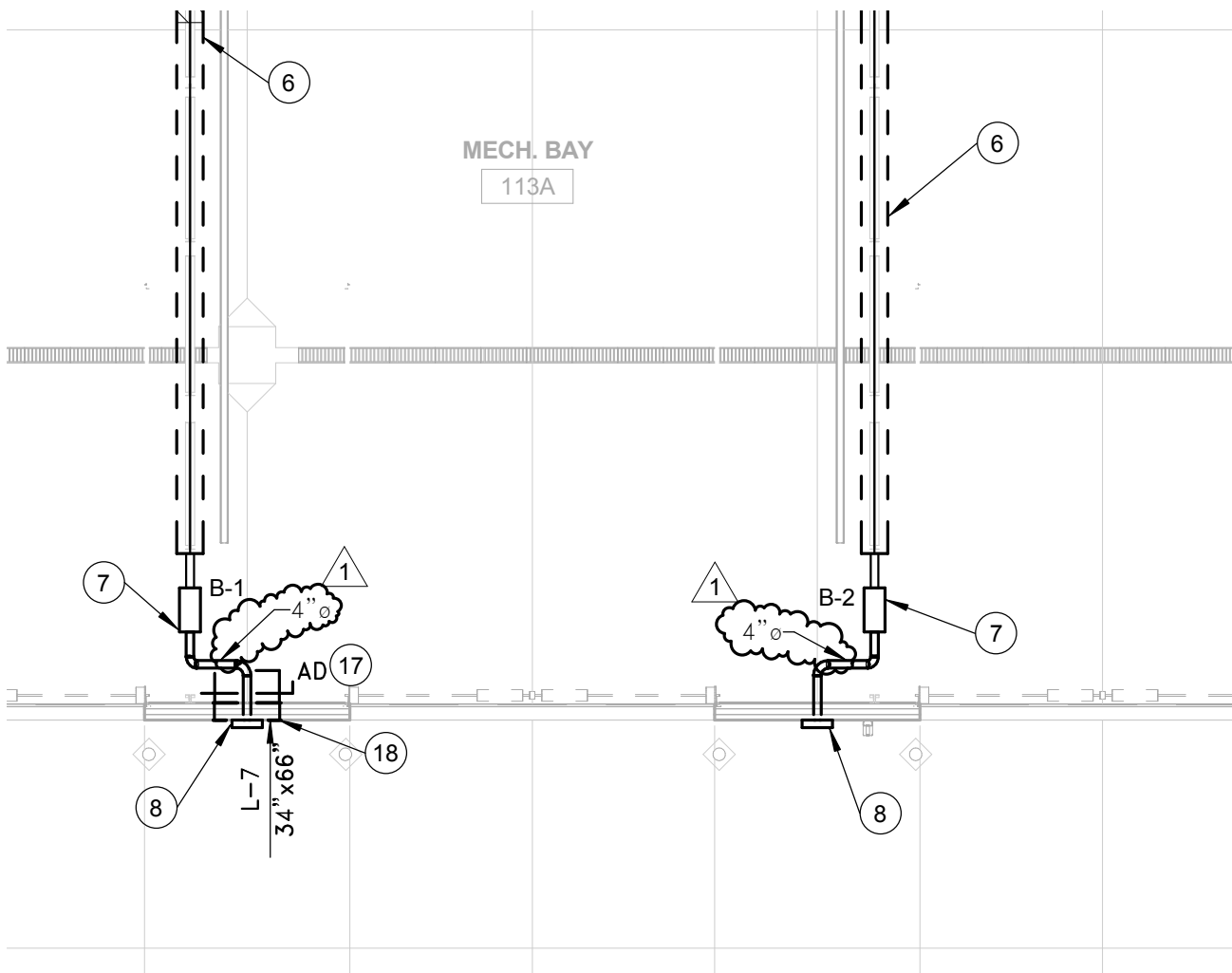
MAIN LEVEL HVAC PLAN

1/8" = 1'-0"

SHEET NOTES: (SYMBOLS ①, ②, ETC.)

20. MAKE-UP AIR UNIT TYPE 1 (MAU-1) AND EXHAUST FANS TYPE 7,8 (EF-7,8) SHALL BE CONTROLLED BY A 24V 3-THROW SWITCH (LOW/HI/OFF). SWITCH AT LOW SETTING SHALL OPEN AUTOMATIC DAMPER (AD) ON LOUVER TYPE 9 (L-9) AND OPERATE MAU-1 AT 50%, ENDSWITCH ON L-9 SHALL ENERGIZE MOTOR STARTER FOR EF-7. SWITCH AT HI SETTING SHALL OPEN AD ON L-9,10 AND OPERATE MAU AT 100%, ENDSWITCH ON L-10 SHALL ENERGIZE MOTOR STARTER FOR EF-8. PROVIDE NECESSARY RELAYS/TRANSFORMERS AS REQUIRED FOR A COMPLETE AND FUNCTIONING SYSTEM, SEE EQUIPMENT CONTROLS SCHEDULE ON THIS SHEET.

①



MAIN LEVEL HVAC PLAN

1/8" = 1'-0"



1111 Lincoln Mall, Suite 111
P.O. Box 84608
Lincoln, NE 68501-4608

TEL 402.474.6311
FAX 402.474.5160
www.oaconsulting.com

(Sheet Number)
M100
(Project Number)
013-2474
(Drawing Number)
(Date)
FEBRUARY 3, 2014

MAIN LEVEL HVAC PLAN
NDOR PALISADE
MAINTENANCE FACILITY



Attachment No. M100-2
to Addendum No. 1
Dated: Feb. 17, 2014

DWG: F:\Projects\013-2474\MPEL\1 - Palisade NDOR CAD\Constructs\Mechanical Schedules and Details\MSN1A.dwg
 DATE: Feb 17, 2014 1:44pm
 USER: lkost
 XREFS: Xref TLB

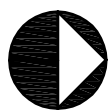
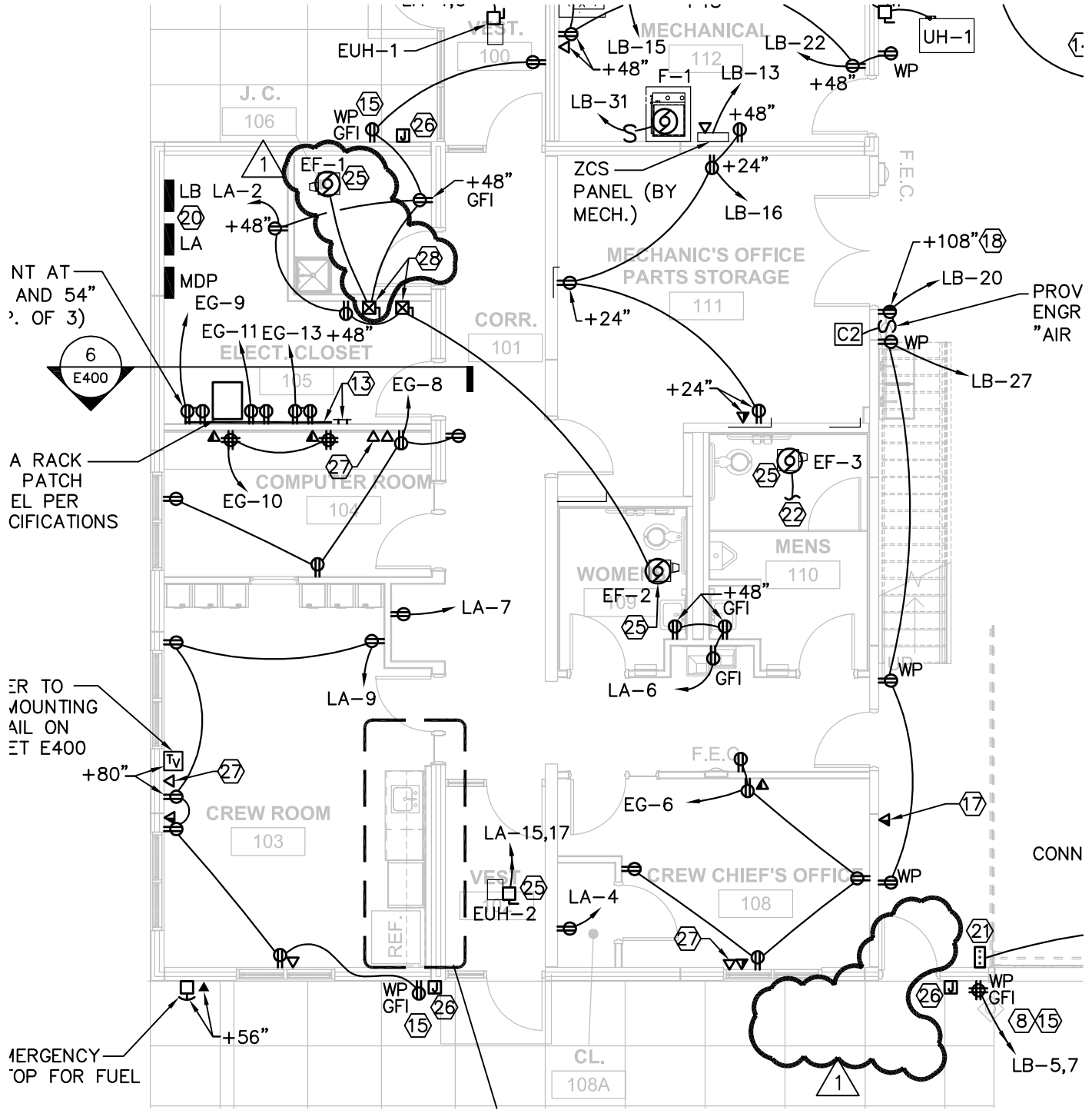
PLUMBING FIXTURE SCHEDULE										
TAG	TYPE	MANUFACTURER ³	MODEL ³	DESCRIPTION	ACCESSORIES	CONNECTIONS ^{1,2}				
						WASTE	VENT	CW	HW	
WH-1	CONCEALED FREEZE-PROOF WALL HYDRANT	WOODFORD	RB67	NON-FREEZE, SELF DRAINING TYPE, CHROME CONCEALING BOX AND DOOR, AUTOMATIC DRAINING WITH DOUBLE CHECK BACKFLOW PREVENTER. DESIGNED FOR TILT-UP WALL CONSTRUCTION.	PROVIDE WITH SPARE KEY FOR EACH HYDRANT PROVIDED.	-	-	3/4"	-	1

NOTES:
 1. VERIFY ALL CONNECTIONS & MOUNTING HEIGHTS WITH CODES, MANUFACTURERS, AND PLANS.
 2. SIZES LISTED INDICATE MIN. SIZE ONLY, SEE PLUMBING RISERS AND FLOOR PLANS FOR LARGER SIZES.
 3. ALTERNATE MANUFACTURERS - KOHLER, AMERICAN STANDARD, CRANE, JUST, CHICAGO FAUCETS, DELTA, MOEN, WADE, JR SMITH, WATTS.

MAKE-UP AIR AND VENTILATING UNITS												
MARK	SERVES	CFM	EXT SP	HP	VOLTAGE	HEATING DATA				SONES	MANUFACTURER AND MODEL	REMARKS
						TYPE	MBH INPUT	MBH OUTPUT	LAT			
MAU-1	WASHBAY	4130	0.30	3.0	208/3	P.G.	263.0	242.0	55	21	GREENHECK DGX-112-H22	1-12

REMARKS:
 1. DISCONNECT SWITCH BY ELECTRICAL. 1
 2. GALVANIZED STEEL CONSTRUCTION WITH REMOVABLE ACCESS PANELS.
 3. SPRING BLOWER VIBRATION ISOLATION.
 4. DIRECT-FIRED, 100% OUTSIDE AIR UNIT (-5°F EAT).
 5. 25:1 TURNDOWN RATIO.
 6. MAXITROL ELECTRONIC MODULATION BURNER CONTROL.
 7. DIRECT SPARK IGNITION.
 8. VARIABLE VOLUME, TWO SPEED VFD CONTROL, VFD SUPPLIED WITH UNIT.
 9. V-BANK FILTER SECTION WITH 2" ALUMINUM MESH FILTERS.
 10. HIGH QUALITY CAST ALUMINUM BURNERS WITH STAINLESS STEEL MIXING PLATES.
 11. 1" LINER INSULATION.
 12. FOLLOW MANUFACTURER REQUIREMENTS FOR 2001-3000 FEET ELEVATION ABOVE SEA LEVEL, PROVIDE ANY NECESSARY ACCESSORIES.

DWG: F:\Projects\013-2474\MPEL\1 - Palisade NDOR CAD\Constructs\Electrical\EPN1A.dwg
 DATE: Feb 17, 2014 1:20pm
 USER: eklein
 XREFS: Xref Base Plan Xref TLB Xref Mechanical Equipment



1

MAIN LEVEL POWER PLAN

1/8" = 1'-0"

OLSSON
ASSOCIATES

1111 Lincoln Mall, Suite 111
 P.O. Box 84608
 Lincoln, NE 68501-4608
 TEL. 402.474.6311
 FAX 402.474.5160
 www.oaconsulting.com

(Sheet Number)

E200

(Project Number)

013-2474

(Drawing Number)

(Date)

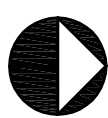
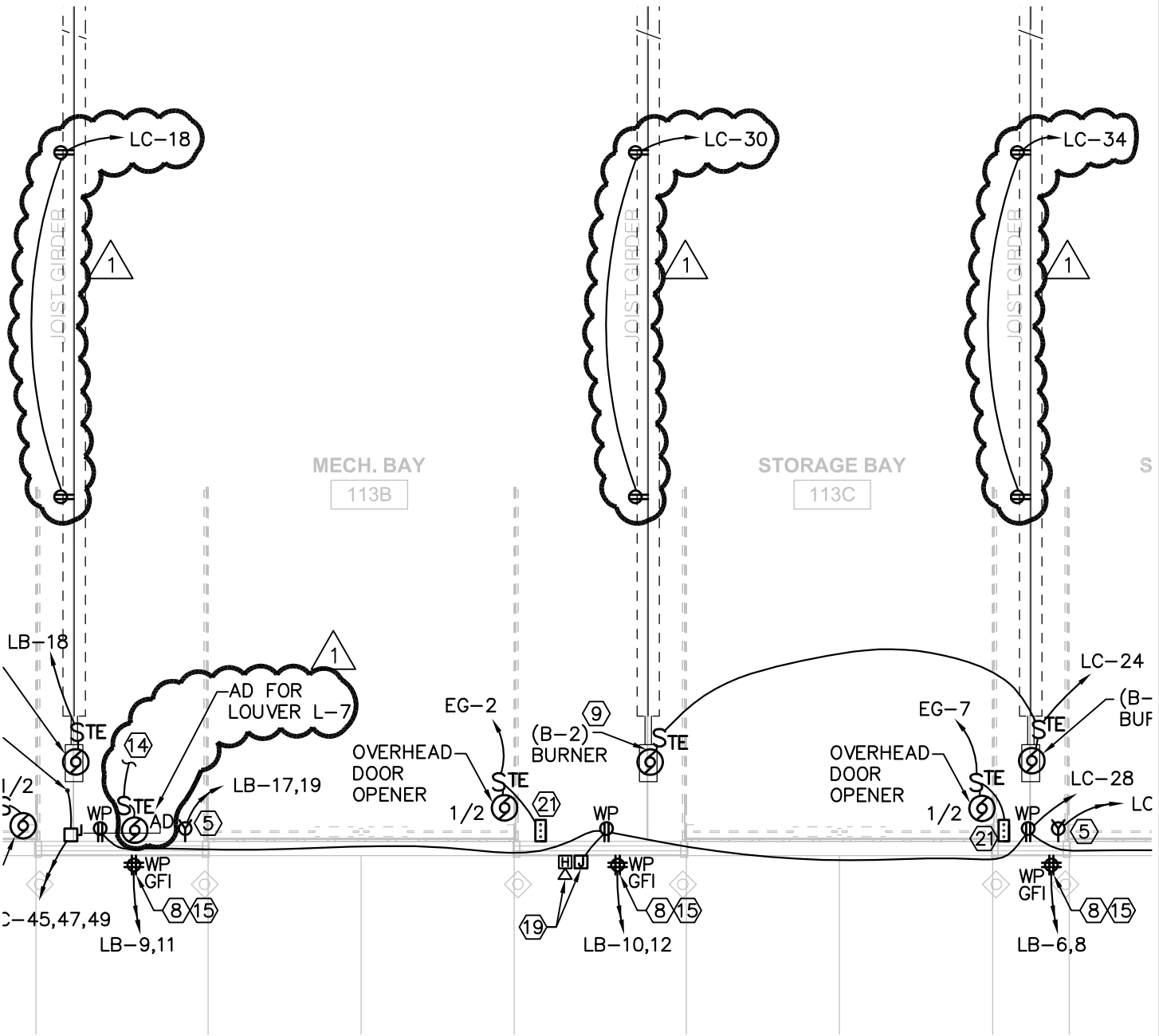
02.03.2014

MAIN & SECOND LEVEL POWER PLANS
 NDOR PALISADE
 MAINTENANCE FACILITY

1

Attachment No. E200-1
 to Addendum No. 1
 Dated: Feb. 17, 2014

DWG: F:\Projects\013-2474\MPEL\1 - Palisade NDOR CAD\Constructs\Electrical\EPN1A.dwg USER: eklein
 DATE: Feb 17, 2014 1:20pm XREFS: Xref Base Plan Xref TLB Xref Mechanical Equipment

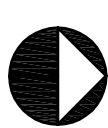
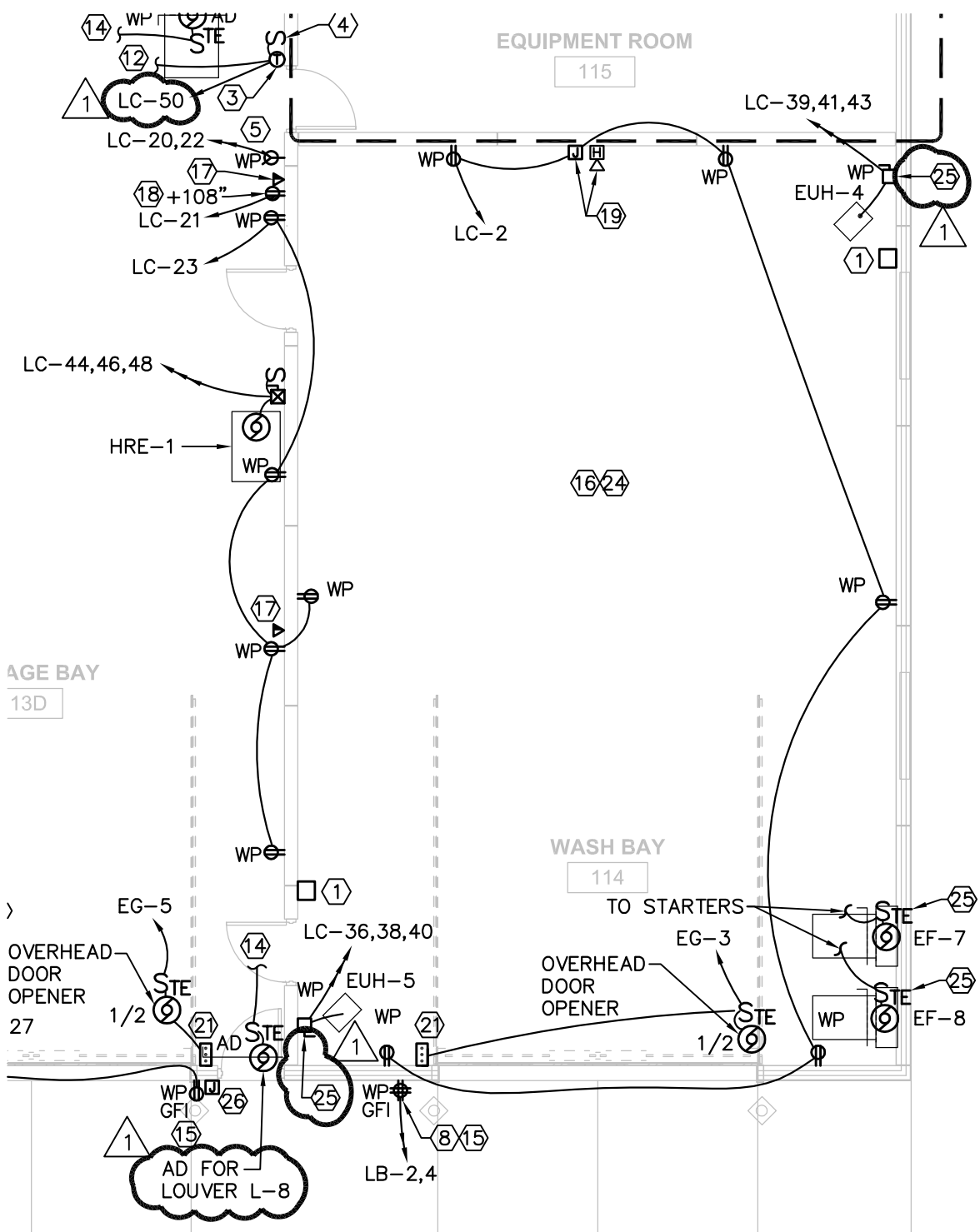


1

MAIN LEVEL POWER PLAN

1/8" = 1'-0"

DWG: F:\Projects\013-2474\MPEL\1 - Palisade NDOR CAD\Constructs\Electrical\EPN1A.dwg USER: eklein
 DATE: Feb 17, 2014 1:38pm XREFS: Xref Base Plan Xref TLB Xref Mechanical Equipment



1

MAIN LEVEL POWER PLAN

1/8" = 1'-0"

DWG: F:\Projects\013-2474_MPEL\1 - Palisade NDOR CAD\Constructs\Electrical Details & Schedules\EPNOA.dwg
 DATE: Feb 17, 2014 1:44pm XREFS: Xref TLB
 USER: eklein

SCHEDULE FOR PANEL			LC	FED FROM	MDP	EQUIP GND BUS		POLES:	84	MIN CB IC	10000	
VOLTAGE:			120/208	x MLO		x						
MAIN BUS:			400A	MCB			ISOLATED GND BUS	MTG:	SURFACE	COMMENTS		
THREE PHASE				4 WIRE								
Ckt #	SERVES	LOAD VA	P	TRIP	PHASE			BREAKER	LOAD VA	SERVES	Ckt #	
					A	B	C					
1	RECEPT EQUIP ROOM 115	720	1	20	1620			20	1	900	RECEPT. WASHBAY 114	2
3	EF-4	1180	1	20		1280		15	1	100	EF-6 & AUTOMATIC DAMPER	4
5	PRESSURE WASHER VENT FAN	180	1	20			1050	15	1	870	EF-7 & AUTOMATIC DAMPER	6
7	PRESSURE WASHER	3037	3	50	3907			15	1	870	EF-8 & AUTOMATIC DAMPER	8
9	-	3037	-	-		7037		60	3	4000	AIR COMPRESSOR	10
11	-	3037	-	-			7037	-	-	4000	-	12
13	MUA-1	1670	3	20	5670			-	-	4000	-	14
15	-	1670	-	-		2850		20	1	1180	EF-5	16
17	-	1670	-	-			2030	20	1	360	RECEPT. GIRDER JOIST	18
19	SPARE		1	20	2500			50	2	2500	SPECIAL REC. STOR. BAY 113D	20
21	AIR CLEANER	1000	1	20		3500		-	-	2500	-	22
23	RECEPT STORAGE BAY 113D	900	1	20			2220	20	1	1320	RADIANT HEAT BURNER B-2,B-3	24
25	SPECIAL REC. STOR. BAY 113D	2500	2	20	3400			20	1	900	RECEPT. STORAGE BAY 113C	26
27	-	2500	-	20		3220		20	1	720	RECEPT. STORAGE BAY 113D	28
29	FAN STORAGE BAY 113C	1920	1	20			2280	20	1	360	RECEPT. GIRDER JOIST	30
31	LTS. WASHBAY 114	1860	1	20	3500			20	1	360	RECEPT. GIRDER JOIST	32
33	EUH-3	1100	3	20		1460		20	1	360	RECEPT. GIRDER JOIST	34
35	-	1100	-	-			6100	50	3	5000	EUH-5	36
37	-	1100	-	-	6100			-	-	5000	-	38
39	EUH-4	5000	3	50		10000		-	-	5000	-	40
41	-	5000	-	-			5000	-	-	-	-	42
43	-	5000	-	-	6321			20	3	1321	HRE-1	44
45	CRANE	300	3	20	1621			-	-	1321	-	46
47	-	300	-	-		700		20	1	400	AD EF-4 & EF-5 L-7 & L-8	50
49	-	300	-	-				20	1	-	SPARE	52
51	SPARE		1	20		0		20	1	-	SPARE	54
53	SPARE		1	20		0		20	1	-	SPARE	56
55	SPARE				0			20	1	-	SPARE	58
57	SPARE				0						SPACE	60
59	SPARE				0						SPACE	62
61	SPARE				0						SPACE	64
63	SPARE				0						SPACE	66
65	SPARE				0						SPACE	68
67	SPARE				0						SPACE	70
69	SPARE				0						SPACE	72
71	SPARE				0						SPACE	74
73	SPARE				0						SPACE	76
75	SPARE				0						SPACE	78
77	SPARE				0						SPACE	80
79	SPARE				0						SPACE	82
81	SPARE				0						SPACE	84
83	SPARE				0						SPACE	
					33718	30968	27338	VA PER PHASE				
					281.0	258.1	227.8	AMPS PER PHASE		256	TOT. CONN. LOAD (AMPS)	
LOAD TYPE		CONNECTED KVA		FACTOR	DEMAND KVA							
LIGHTING				3.5	125%		4.4					
RECEPT(10KVA OR LESS)				10.0	100%		10.0					
RECEPT(OVER 10KVA)				3.6	50%		1.8					
HVAC/MOTOR				60.6	100%		60.6					
MOTOR(LARGEST)				12.0	125%		15.0					
KITCHEN EQUIPMENT				0.0	100%		0.0					
MISCELLANEOUS				2.4	100%		2.4					
TOTAL CONNECTED (KVA)		92.0			94.1		TOT. DEMAND KVA	261	TOT. DEMAND LOAD(AMPS)			



(Sheet Number)
E500
 (Project Number)
 013-2474
 (Drawing Number)
 (Date)
 02.03.2014

ELECTRICAL PANEL SCHEDULES
 NDOR PALISADE
 MAINTENANCE FACILITY

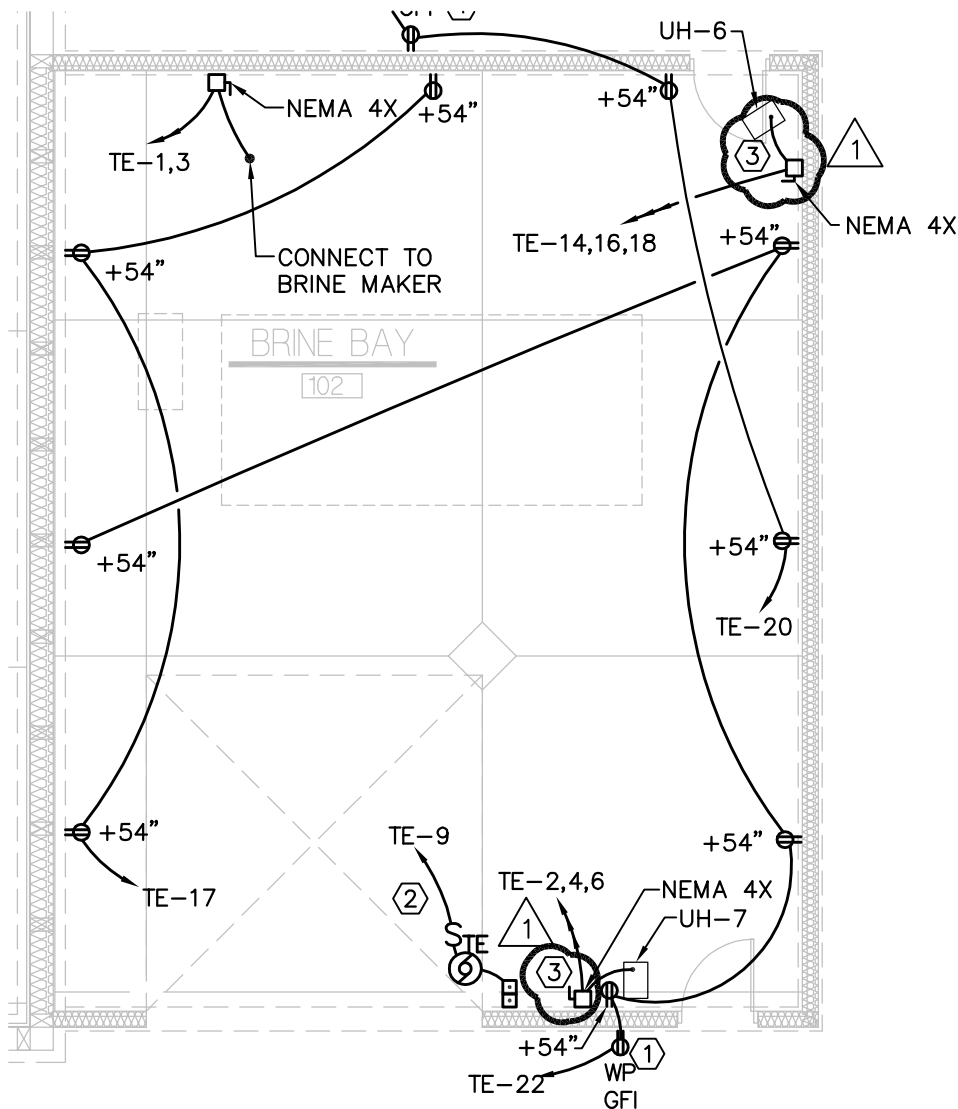
Attachment No. E500-1
 to Addendum No. 1
 Dated: Feb. 17, 2014

SHEET NOTES: (SYMBOLS ①, ②, ETC.)

1. EXTERIOR RECEPTACLES SHALL BE INTERMATIC WP1000MX SERIES WITH DIE CAST WEATHERPROOF WHILE-IN-USE GRAY COVER.

2. CONNECT ALL CONTROL WIRING FOR COMPLETE INSTALLATION OF OVERHEAD DOORS. INSTALL CONTROL WIRING IN CONDUIT.

3. FACTORY DISCONNECT SUPPLIED WITH MECHANICAL EQUIPMENT.



SALT STORAGE BUILDING POWER PLAN

1/8" = 1'-0"



1

DWG: F:\Projects\013-2474_MPEL\1 - Palisade NDOR CAD\Constructs\Electrical\SB-EPN1A.dwg USER: eklein
 DATE: Feb 17, 2014 1:22pm XREFS: Xref Salt Storage Bldg Xref Salt Storage TLB MHN1A



1111 Lincoln Mall, Suite 111
 P.O. Box 84608
 Lincoln, NE 68501-4608

TEL 402.474.6311
 FAX 402.474.5160
 www.oaconsulting.com

(Sheet Number)
SLB-E100

(Project Number)
 013-2474
 (Drawing Number)

(Date)
 02.03.2014

SALT STORAGE BLDG POWER PLAN
 NDOR PALISADE
 MAINTENANCE FACILITY

1

Attachment No. SLB-E100-1
 to Addendum No. 1
 Dated: Feb. 17, 2014

