

Sampson Construction Co., Inc.
3730 South 14th Street
Lincoln, NE 68502
Phone: (402) 434-5450
FAX: (402) 434-5466

Bid Bulletin #04

PROJECT: Weeping Water Public Schools
Additions & Renovations
Weeping Water, NE

DATE: February 21, 2014

This Bid Bulletin includes items 1-1 through 1-5. Each item shall be fully incorporated into the Bidding/Contract Documents and have the same force and effect as though originally included. Bidders shall acknowledge receipt of this Bid Bulletin on the bid form.

- Item 1-1 Summary of work #01C- Slabs
- Bidders shall include the lean concrete topping per referenced construction note #1 on sheet C0-04. Note #1 is shown at the area B addition.
- Item 1-2 Summary of work #01JJ- Plumbing
- As a matter of clarification, Bid Bulletin #3 contained an insulation schedule for piping. It was listed as a Division 22 specification item. Some of the piping included in this schedule (i.e refrigerant piping) is the responsibility of the Div 23 HVAC contractor/Summary of work #1KK. Insulation for any piping that is part of the HVAC scope of work shall be completed by the HVAC contractor.
- Item 1-3 Summary of work #1KK-HVAC
- As a matter of clarification, Bid Bulletin #3 contained an insulation schedule for piping. It was listed as a Division 22 specification item. Some of the piping included in this schedule (i.e refrigerant piping) is the responsibility of the Div 23 HVAC contractor/Summary of work #1KK. Insulation for any piping that is part of the HVAC scope of work shall be completed by the HVAC contractor.
- Item 1-4 Summary of work #01MM- Earthwork
- For note #3 on sheet C0-04, bidders shall assume this area to be similar to note #4 and include 3'-0" of overexcavation/structural fill. Bidders shall assume this area is free from rubble. Bidders shall provide the following unit prices: 1.) Unit price per cy for additional overexcavation/structural fill beyond 3'-0"
 - 2.) Unit price per cy for less overexcavation/structural fill if 3'-0" is not required. 3.) Unit price per cy for excavation and removal of rubble.
 - Bidders shall assume that existing lean clays are not suitable for re-use as structural fill. Bidders shall provide a deductive unit price (unit price #4) for using existing soils in lieu of importing structural fill if during excavation it is determined that the existing lean clays are suitable for re-use.
- Item 1-5 Attached is addendum #3 from The Schemmer Associates dated 2/21/14.

END OF BID BULLETIN #03

DATE: February 21, 2014

FROM: The Schemmer Associates
Architects-Engineers-Planners
1044 North 115th Street, Suite 300
Omaha, Nebraska 68154-4436
Phone: (402) 493-4800
Telefax: (402) 493-7951

TO: Prospective Bidders and Plan Holders

RE: Addendum No. 3 to the Bidding Documents for:
Weeping Water Public Schools
Additions & Renovation
204 West O Street
Weeping Water, Nebraska 68463
Schemmer Project No. 06368.001

This addendum is issued by the Architect to the Contractor. This Addendum shall be made a part of the Contract Documents. Acknowledge receipt of this Addendum shall be provided on the Bid Form. Failure to do so may subject Bidder to disqualification.

Prior approval of manufacturers is a general approval only for bidding purposes. Final approval of the products is contingent upon the submittal of product data and/or shop drawings which will have to meet the specific design requirements and the specifications.

This addendum consists of six 6 pages of written addendum items and eleven (11) pages of supplemental drawings.

THE SCHEMMER ASSOCIATES INC.
ARCHITECTS | ENGINEERS | PLANNERS

PROJECT MANUAL

ARCHITECTURAL

Item No. SA-1

Section 064116,

- 1) under paragraph 2.4.K.2, ADD "satin stainless steel finish shall only be used if the satin chromium plate finish is not available for a specified item."

Item No. SA-2

Section 087100,

- 1) At hardware set no 18. ADD "1 EACH CLOSER 4011/4111 AL (@ DOORS C202 & C204)"

Item No. SA-3

Section 096420,

In Addendum No. 1, Item No. SA-11, under paragraph 1.b DELETE "Random Length", ADD "XL Plus Maple" in its place.

Item No. SA-4

Section 099990,

- 1) Under paragraph 2.1.A.1, ADD "Daltile – Unity; 12 x 24, finish – P405 Ashgrey unpolished, shall be considered an approved equal."
- 2) Under paragraph 2.1.A.2, ADD "Daltile – Unity; 12 x 24, finish – P406 Nero unpolished, shall be considered an approved equal."
- 3) Under paragraph 2.1.A.3, ADD "Daltile – Unity; 24 x 24, finish – P400 Avorio unpolished, shall be considered an approved equal."
- 4) Under paragraph 2.1.B.1, ADD "Daltile – Unity; 12 x 24, finish – P405 Nero unpolished, shall be considered an approved equal."
- 5) Under paragraph 2.1.A.3, ADD "Daltile – Unity; 12 x 24, finish – P400 Avorio unpolished, shall be considered an approved equal."
- 6) Under paragraph 2.1.B.3, ADD "Daltile – Unity; 6 x 12 covebase, finish – P405 Ashgrey unpolished, shall be considered an approved equal."
- 7) Under paragraph 2.1.C.1, DELETE "0Q45 Golden Flash". ADD "0Q42 ARID GRAY" in its place.
- 8) Under paragraph 2.1.C.2, DELETE "0Q45 Golden Flash". ADD "0Q42 ARID GRAY" in its place.

Item No. SA-5

Section 116623,

- 1) under paragraph 2.3, ADD "B. Other Acceptable Manufacturer's, 1. Fairplay Scoreboards, 2. Nevco, Inc. Scoreboards. 3. Sportable Scoreboards".

FIRE PROTECTION

Item No. SF-1,

Section 077200

- 1) Add Heat and Smoke Vents to 1.1.A
- 2) Add the following to 2.1.A:
 2. Mill-Phosphatized Finish: Manufacturer's standard for field painting.
 3. Factory Prime Coating: Where field painting is indicated, apply pretreatment and white or light-colored, factory-applied, baked-on epoxy primer coat, with a minimum dry film thickness of 0.005 mm (0.2 mil).
 4. Exposed Coil-Coated Finish: Two-coat fluoropolymer finish; AAMA 621; system consisting of primer and fluoropolymer color topcoat containing not less than 70 percent PVDF resin by weight.

3) Add Subsection 2.4 to Part 2 as follows:

2.4 HEAT AND SMOKE VENTS

- A. Hatch-Type Heat and Smoke Vents: Manufacturer's standard, with single-walled insulated curbs, welded or mechanically fastened and sealed corner joints, integral condensation gutter, and cap flashing. Fabricate with insulated double-walled lid and continuous weathertight perimeter lid gaskets, and equip with automatic self-lifting mechanisms, a 120-Volt electronic actuator, and UL-listed fire-suppression system.
1. Manufacturers: Subject to compliance with requirements, available manufacturers offering products that may be incorporated into the Work include, but are not limited to, the following:
 - a. Babcock-Davis.
 - b. Bilco Company (The).
 - c. Bristolite Skylights.
 - d. Dur-Red Products.
 - e. Hi Pro International, Inc.
 - f. J. L. Industries, Inc.
 - g. Milcor Inc.; Commercial Products Group of Hart & Cooley, Inc.
 - h. Naturalite Skylight Systems; Vistawall Group (The).
 - i. Nystrom.
 - j. O'Keeffe's Inc.
 - k. Pate Company (The).
 - l. Western Canwell.
 2. Type and Size: Single-leaf lid, 48 inches by 96 inches.
 3. Type and Size: Double-leaf lid, 1830 by 2440 mm (48 by 96 inches).
 4. Loads: Minimum 1.9-kPa (40-lbf/sq. ft.) external live load and 1.4-kPa (30-lbf/sq. ft.) internal uplift load.
 - a. When 120 V electronic release is actuated, lid shall open against 0.5-kPa (10-lbf/sq. ft.) snow or wind load and lock in position.
 5. Heat and Smoke Vent Standard: Provide units that have been tested and listed to comply with UL 793.
 6. Curb, Framing, and Lid Material: Aluminum-zinc alloy-coated steel sheet, 2.01 mm (0.079 inch) thick.
 - a. Finish: Mill phosphatized
 - b. Color: As selected by Architect from manufacturer's full range.
 7. Curb, Framing, and Lid Material: Aluminum sheet, 2.28 mm (0.090 inch) thick.
 - a. Finish: Mill.
 - b. Color: As selected by Architect from manufacturer's full range.
 8. Curb, Framing, and Lid Material: Stainless-steel sheet, 1.98 mm (0.078 inch) thick.
 - a. Finish: Manufacturer's standard
 9. Construction:
 - a. Insulation: Cellulosic-fiberboard.

- b. Hatch Lid: Opaque, insulated, and double walled, with manufacturer's standard metal liner of same material and finish as outer metal lid.
 - c. Hatch Lid: Glazed, insulated, and double walled, with manufacturer's standard metal liner of same material and finish as outer metal lid.
 - d. Exterior Curb Liner: Manufacturer's standard, of same material and finish as metal curb.
 - e. Fabricate curbs to minimum height of 300 mm (12 inches) unless otherwise indicated.
 - f. Sloping Roofs: Where slope or roof deck exceeds 1:48, fabricate curb with perimeter curb height that is tapered to accommodate roof slope so that top surfaces of perimeter curb are level. Equip hatch with water diverter or cricket on side that obstructs water flow.
10. Hardware: Manufacturer's standard, corrosion resistant or hot-dip galvanized; with hinges, hold-open devices, automatic 120V actuator, and independent manual-release devices for inside and outside operation of lids.
11. Electronic Release: 120V actuator with a maximum power draw of 5W. Wiring by electrical contractor.

DRAWINGS

ARCHITECTURAL

Item No. DA-1, Sheet AFP-3

- 1) ADD "ONE_HOUR FIRE RATED WALL" at north wall and door of STORAGE C202 & STORAGE C204.

Item No. DA-2, Sheet A0-03

- 2) Remove existing door and frame into NURSE A137. Salvage for relocation. (SEE SDA-12 attached.)
- 3) Remove existing door swing @ ELEV LOBBY A128. No existing door at this location. (see SDA-12 attached.)

Item No. DA-3, Sheet A1-07

- 1) Reinstall door and frame A137 as shown on SDA-12 attached.

Item No. DA-4, Sheet A1-13

- 1) Roof Plan
 - a. See attached SDA-13 for revisions.

Item No. DA-5, Sheet A2-03

- 1) 2/Enlarged East Elevation @ Admin / Library Addition
 - a. See attached SDA-13 for revisions.

Item No. DA-6, Sheet A3-02

- 1) FIRST FLOOR – AREA B – ROOM FINISH SCHEDULE
 - a. REMOVE rooms B112 & B154 from schedule

Item No. DA-7, Sheet A3-03

- 1) SECOND FLOOR – AREA C – DOOR SCHEDULE
 - a. At doors C202 & C204, ADD "60 MIN" in label column.
- 2) Frame Types
 - a. At frame type F6, ADD "60 MIN" to frame type.

Item No. DA-8, Sheet A4-03

- 1) Detail 6
 - a. See attached SDA-13 for revisions.

Item No. DA-9, Sheet A4-05

- 1) Wall Section 3
 - a. See SDA-11 for revisions.

Item No. DA-10, Sheet A5-02

- 1) Detail 7
 - a. REMOVE "WALL COVERING" callout
 - b. DELETE "1/4" CORK TACKWALL" callout. ADD "1/4" TACKBOARD, NATURAL CORK COLOR, FULL SIZE, NO SEAM"

Item No. DA-11, Sheet A6-06

- 1) FIRST FLOOR PLAN – AREA C – REFLECTED CEILING
 - a. See SDA-11 for revisions.

STRUCTURAL

Item No. DS-1, Sheet S3-05

- 1) Detail 6/S3-05, ADD note "REFER TO DETAIL 5/S3-08 FOR AN ALTERNATE METHOD OF ANCHORING CMU WALLS ABOVE PRECAST HOLLOWCORE PLANKS".

Item No. DS-2, Sheet S3-08

- 1) ADD detail 5/S3-08 as shown on attached supplemental drawing SDS-7.

FIRE PROTECTION

Item No. DF-1, Sheet FP1-09

- 1) Add sprinkler protection to eyebrow hoods over cooktops in Consumer Science room; see supplemental drawing SDF-1.

Item No. DF-1, Sheet FP1-04

- 1) Add Note 4 to Referenced Notes as follows:
 4. PROVIDE CLASS II 1 1/2" FIRE HOSE STANDPIPE ON EACH SIDE OF STAGE IN ACCORDANCE WITH NFPA 14 AND NFPA 101.

MECHANICAL

Item No. DM-1, Sheet M1-02

- 1) Plan updated to indicate storm class louvers in duct penetrations through shelter wall: reduce 48x18 return duct serving gym to 44x18 to provide space for 14x8 to 18x18 transitions for ducts penetrating shelter wall; see supplemental drawing SDM-15.

Item No. DM-2, Sheet M1-02

- 1) Fan coil unit FC-79 serving storage room and Office C005 revised from VRF system to a mini split system comprised of indoor unit SS-01 and outdoor unit SSHP-01; see supplemental drawings SDM-16 and SDM-19 for new plan and schedule information.

Item No. DM-3, Sheet M1-02

- 1) Fan coil FC-18 unit size reduced and distribution isolated to Lobby and Vestibule to comply with egress fire separation requirement. Fan coil added to Workroom and given the tag FC-79 (See DM-2 above); see supplemental drawings SDM-17 and SDM-19 for new plan and schedule

information.

Item No. DM-4, Sheet M1-09

- 1) Roof plan updated to include heat and smoke vents above stage area at Auditorium in Area A; see supplemental drawing SDM-18.

ELECTRICAL

Item No. DE-1, Sheet E1-06

- 1) ADD dual faced, wall mounted Fixture 14 with egress arrows from gymnasium/track to Stair C132. Power emergency egress fixture with unswitched phase, neutral, and ground conductors from Circuit BH1-14.

Item No. DE-2, Sheet E1-07

- 1) ADD emergency light symbol to fixture 11 nearest door in Room A217. Power emergency battery pack with unswitched phase, neutral, and ground conductors from Circuit 2H1-26.

Item No. DE-3, Sheet E2-04

- 1) ADD general note "G. CONTRACTOR SHALL PROVIDE POWER TO ALL SMOKE VENTS FROM CIRCUIT 1L2-15. SMOKE VENTS SHALL BE CONNECTED TO FIRE ALARM SYSTEM TO OPEN AUTOMATICALLY ON WATER FLOW. SEE SHEET M1-09 FOR SMOKE VENT LOCATIONS."

Item No. DE-4, Sheet E2-05

- 1) ADD mechanical fan coil unit FC-81 in Rm B104. See mechanical sheet M1-04 for exact location. Provide power from circuit 1L3-1.

Item No. DE-5, Sheet E5-01

- 1) ADD referenced note 9, to read "PROVIDE TYPE 1 SPD ENCLOSURE." ADD keyed note 9 symbol to Detail 2, indicating HMDP.

Item No. DE-6, Sheet E6-01

- 1) ADD mechanical fan coil unit FC-81 to EQUIPMENT ELECTRICAL SCHEDULE. Voltage 208 V, 1 phase, 0.15 kW load. Provide 30 A fused disconnect, fused at 1 A. Feeder shall be 2 #12, 1 #12 G, in 3/4" C.

Item No. DE-7, Sheet E7-01

- 2) REVISE SWITCHBOARD HMDP to POWERPANEL HMDP.
- 3) REVISE POWERPANEL HMDP enclosure to NEMA 3R.

END OF ADDENDUM NO. 3

SUPPLEMENTAL DRAWING

DATE: 02/14/14

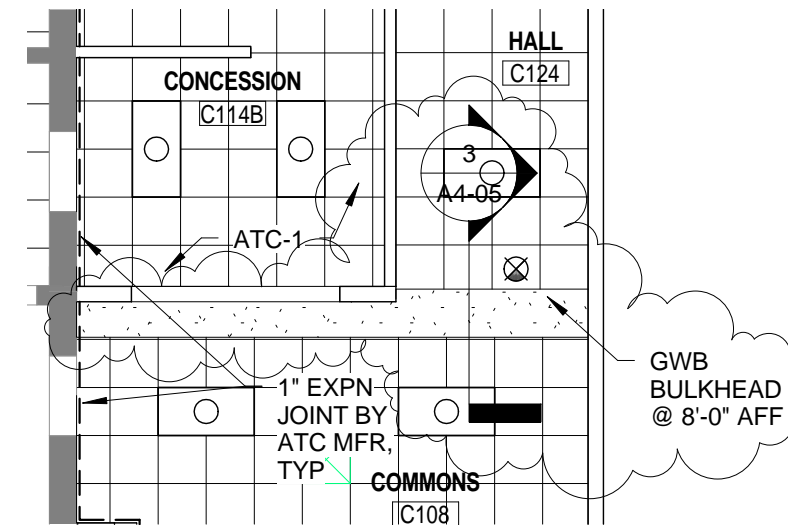
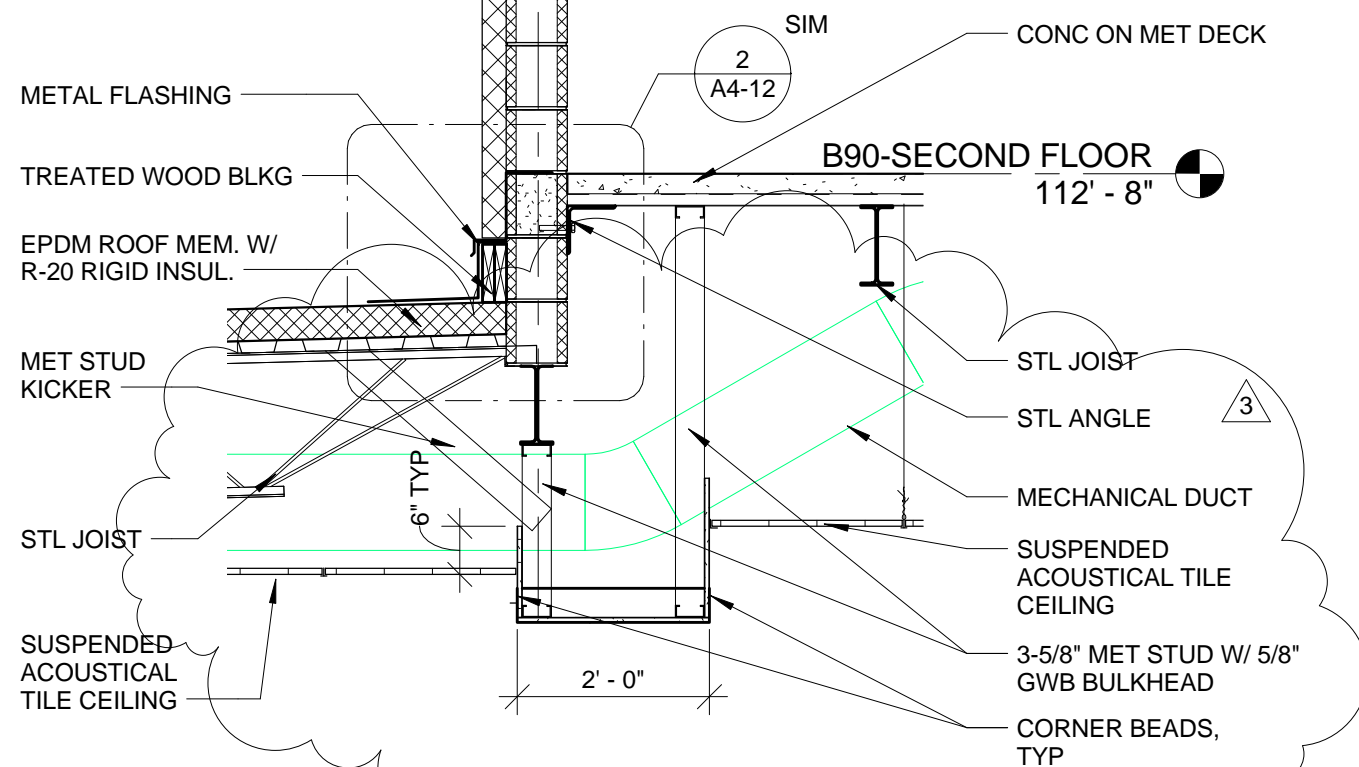
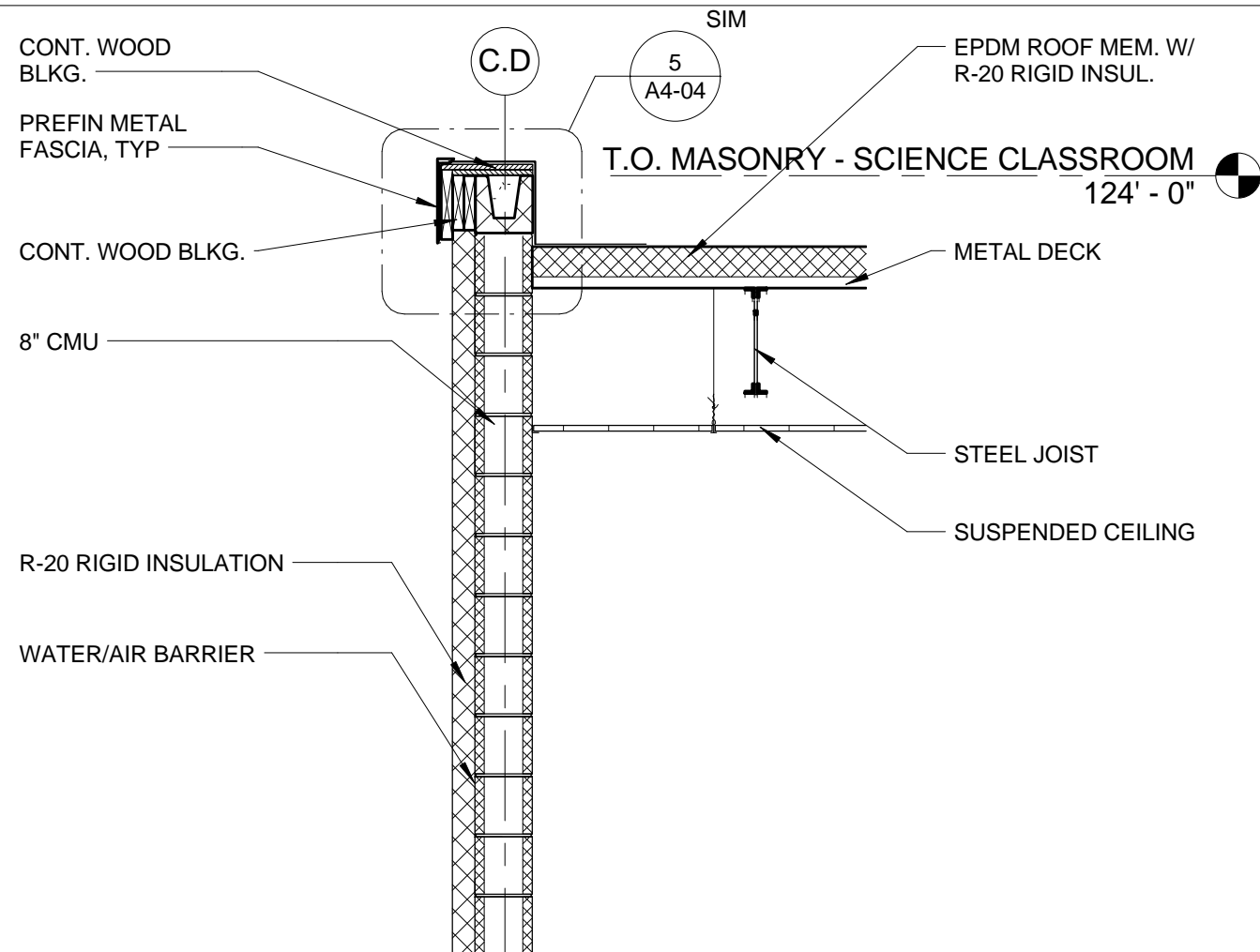
DRAWN: MEM

SCALE: As indicated

SHEET NO: SDA-11

SHEET TITLE: CEILING REVISIONS

REF: A4-05 & A6-06



1 FIRST FLOOR PLAN - AREA C - REFLECTED CEILING
SCALE: 1/8" = 1'-0"

3 WALL SECTION
SCALE: 1/2" = 1'-0"

SUPPLEMENTAL DRAWING

DATE: 02/20/14

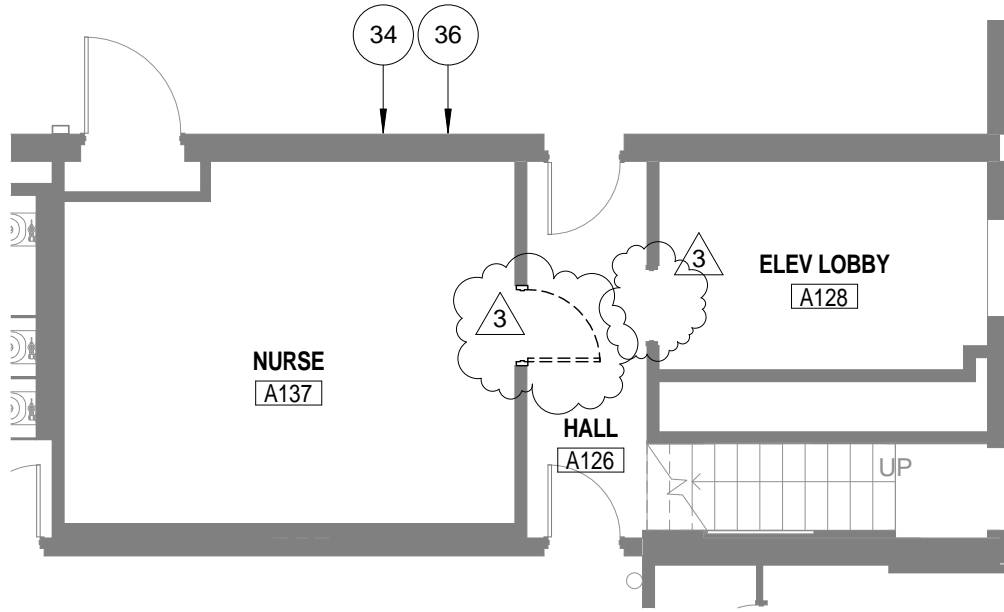
DRAWN: MEM

SCALE: 1/8" = 1'-0"

SHEET NO: SDA-12

SHEET TITLE: PLAN REVISION

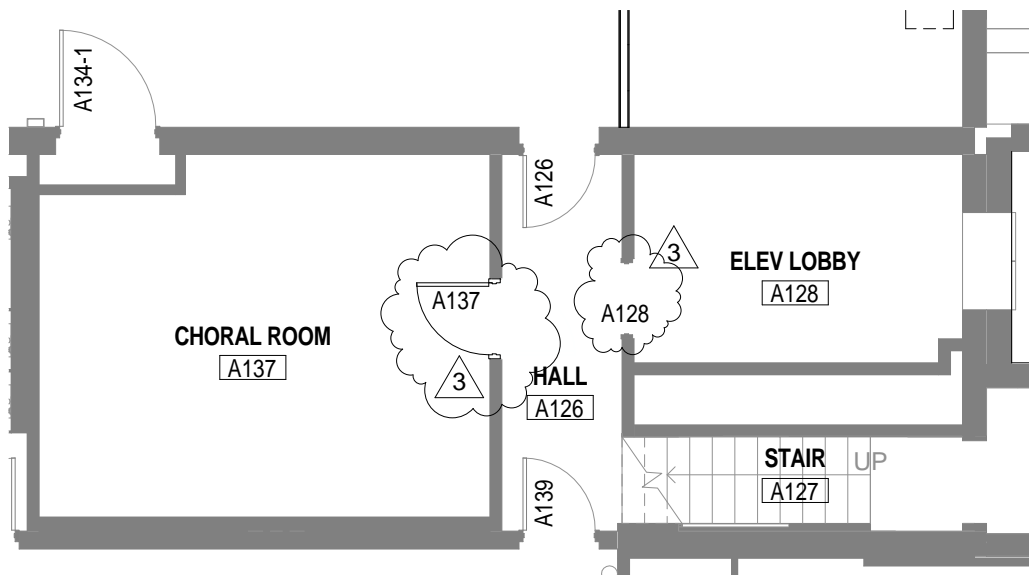
REF: A0-03 & A1-07



1.

FIRST FLOOR PLAN - AREA A - DEMOLITION

SCALE: 1/8" = 1'-0"



1

FIRST FLOOR PLAN - AREA A

SCALE: 1/8" = 1'-0"

SUPPLEMENTAL DRAWING

DATE: 02/20/14

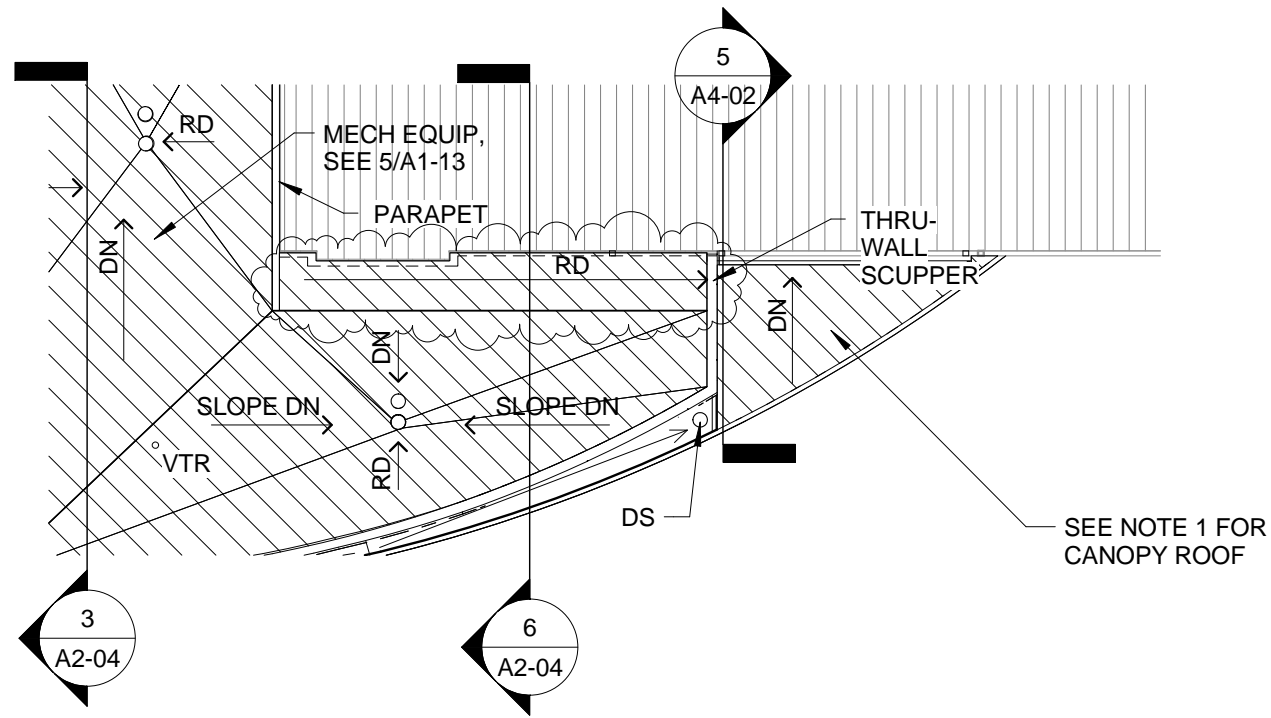
DRAWN: MEM

SCALE: As indicated

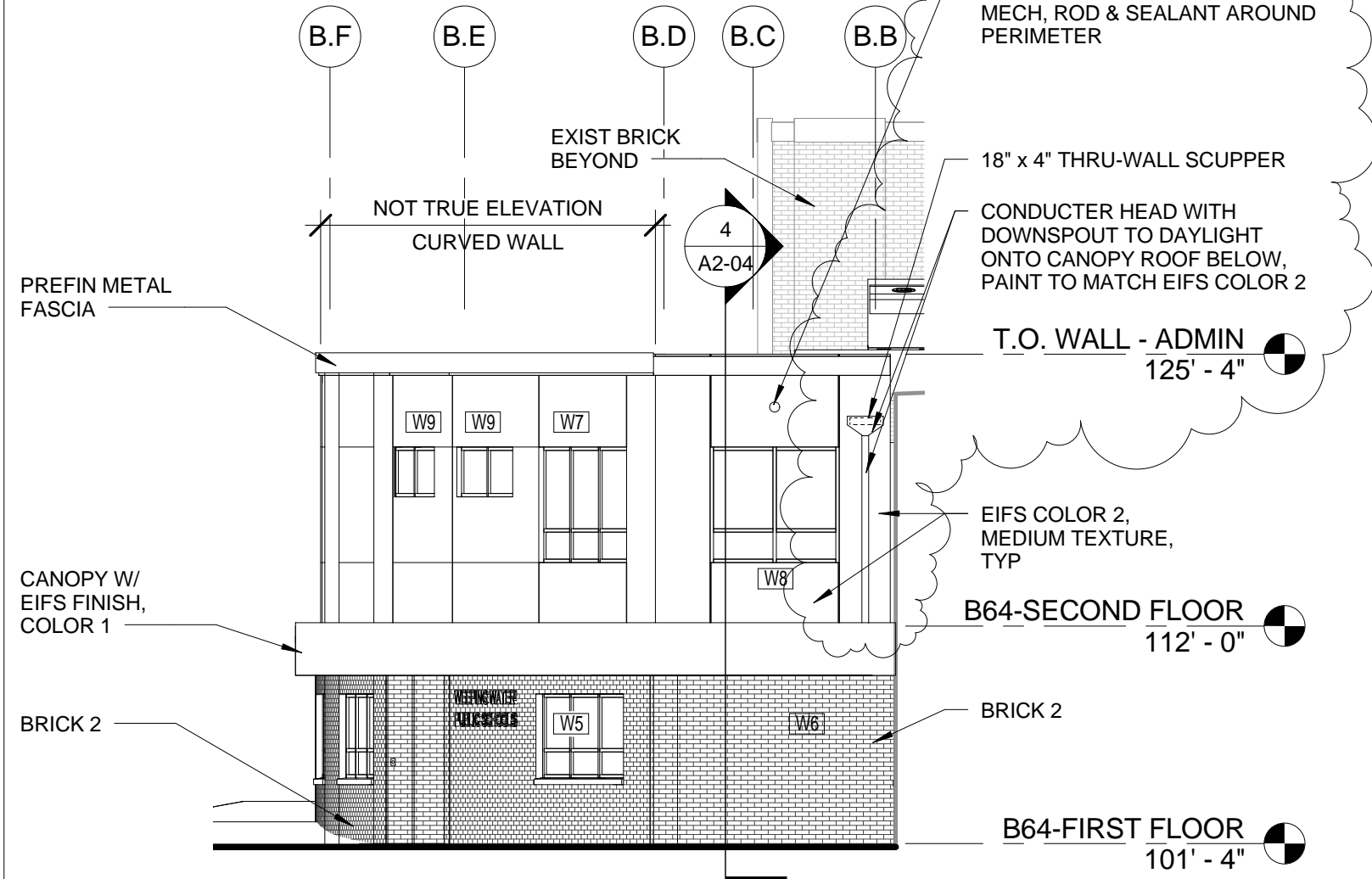
SHEET NO: SDA-13

SHEET TITLE: ROOF REVISION

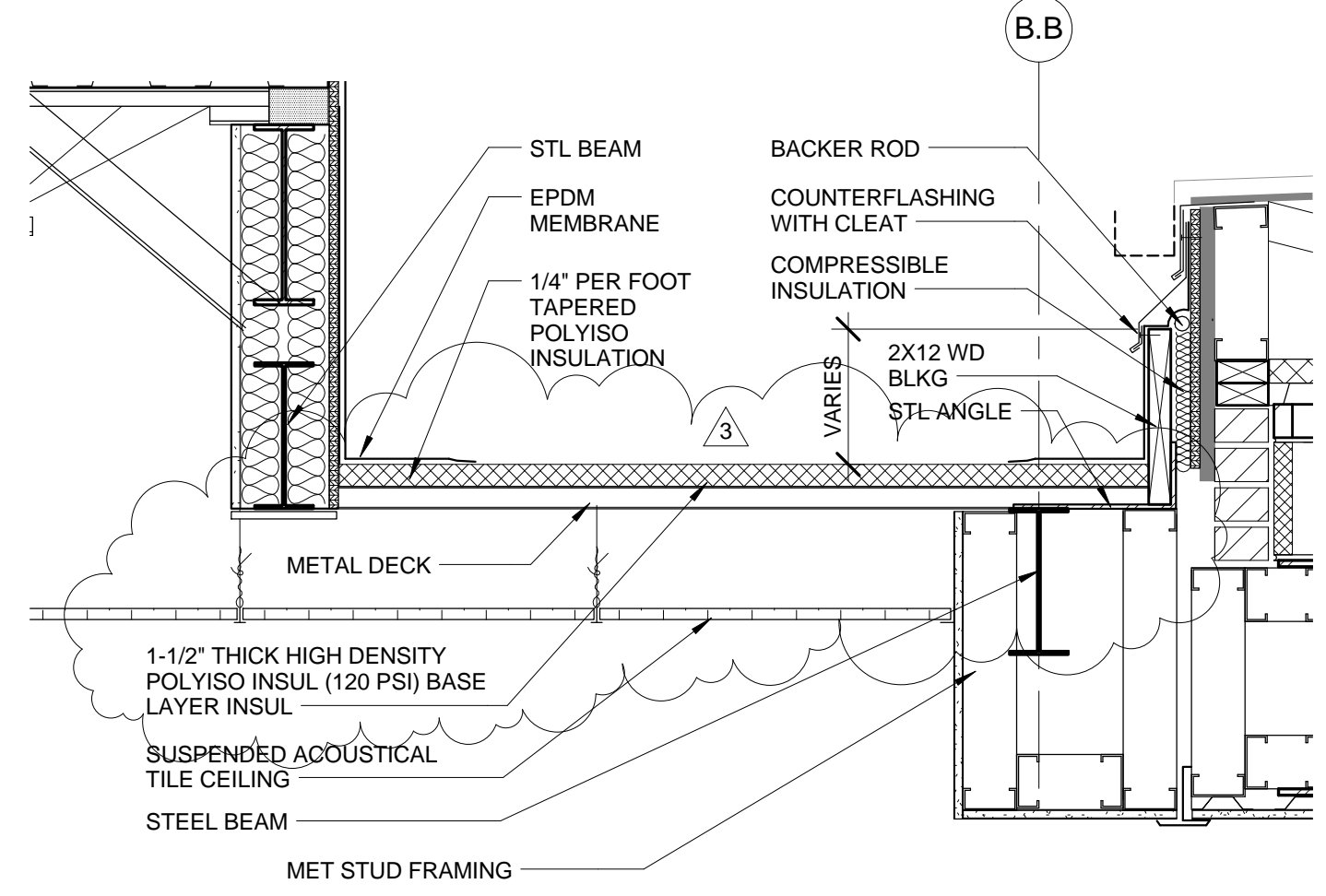
REF: A1-13, A2-03,
A4-03



1 ROOF COMPOSITE PLAN
SCALE: 1/16" = 1'-0"



2 ENLARGED EAST ELEVATION @ ADMIN / LIBRARY ADDITION
SCALE: 1/8" = 1'-0"



6 DETAIL @ ROOF STEP
SCALE: 1" = 1'-0"

C:\Users\mmacklin\Documents\06368001-WWPS-ARCH-CENTRAL_macklin.rvt 2/20/2014 4:07:04 PM

SUPPLEMENTAL DRAWING

DATE: 02/20/14

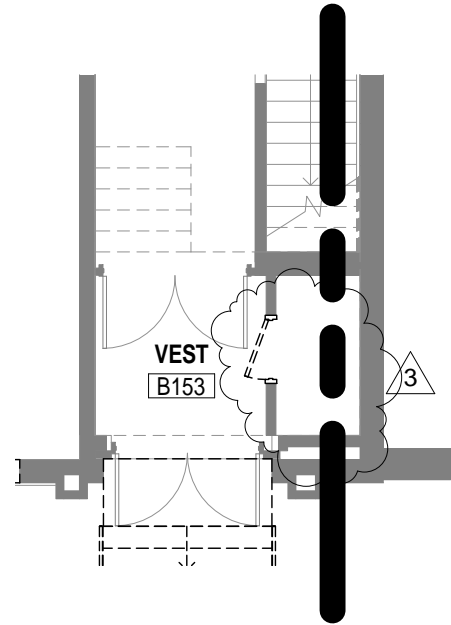
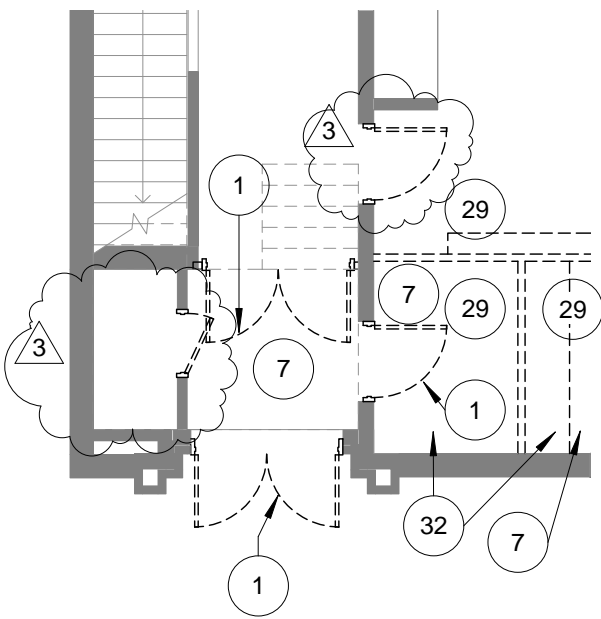
DRAWN: MEM

SCALE: 1/8" = 1'-0"

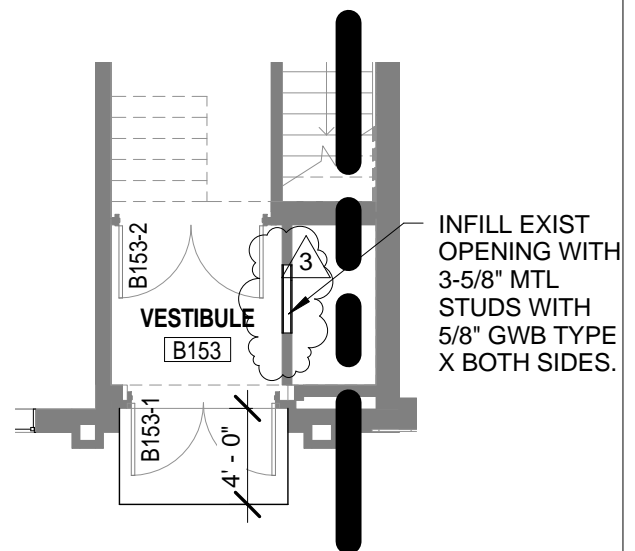
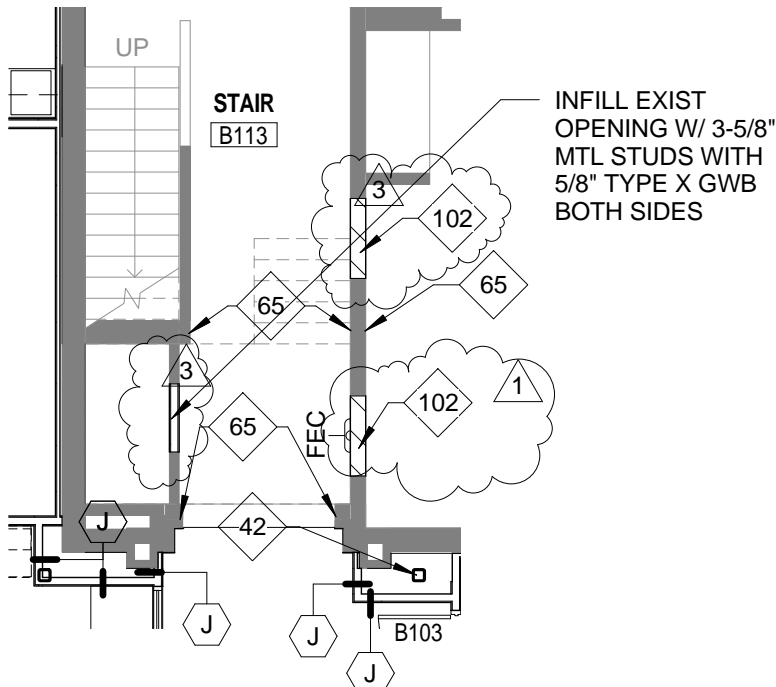
SHEET NO: SDA-14

SHEET TITLE: REVISIONS @ STAIR B113 & STAIR B153

REF: A0-04 & A1-08



1 FIRST FLOOR PLAN - AREA B & C - DEMOLITION
 SCALE: 1/8" = 1'-0"



1. FIRST FLOOR PLAN - AREA B
 SCALE: 1/8" = 1'-0"

SCHEMMER

ARCHITECTS | ENGINEERS | PLANNERS

PROJECT: WEEPING WATER PUBLIC SCHOOLS
ADDITIONS & RENOVATION

JOB NO: 06368.001

SUPPLEMENTAL DRAWING

DATE: 02/20/14

DRAWN: KMW

SCALE: 3/4" = 1'-0"

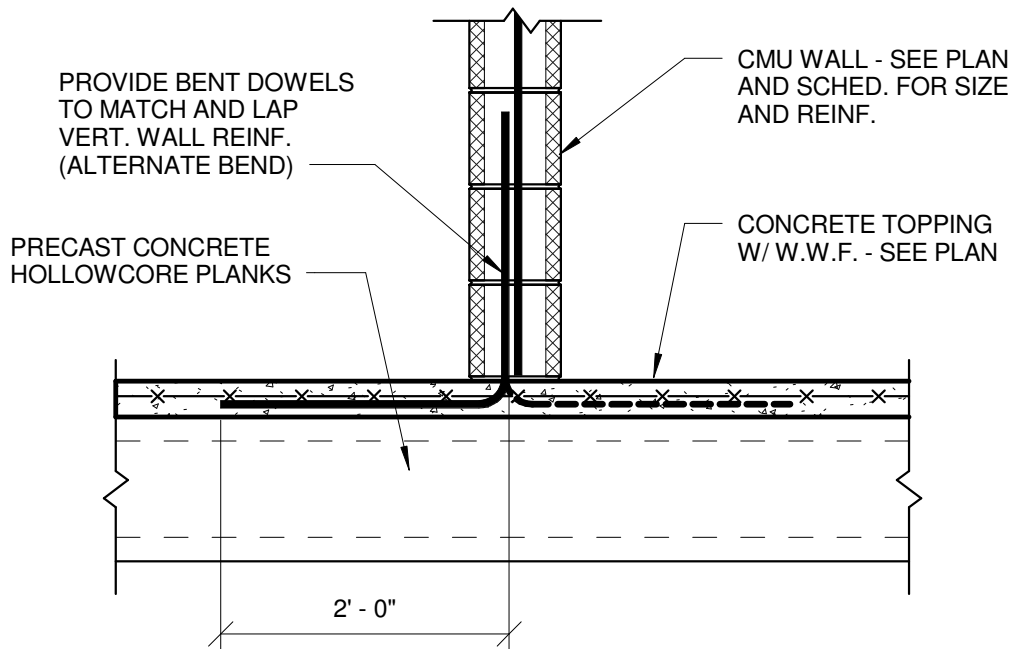
SHEET NO: SDS-7

SHEET TITLE: CMU WALL AT PRECAST HOLLOWCORE PLANK

REF: 5/S3-08

NOTE:

THIS DETAIL IS AN ALTERNATE METHOD OF ANCHORING CMU WALLS ABOVE PRECAST HOLLOWCORE PLANKS (SEE DETAIL 6/S3-05).



SCHEMMER

ARCHITECTS | ENGINEERS | PLANNERS

PROJECT: WEEPING WATER PUBLIC
ADDITIONS & RENOVATION

JOB NO: 06368.001

SUPPLEMENTAL DRAWING

DATE: 02/21/14

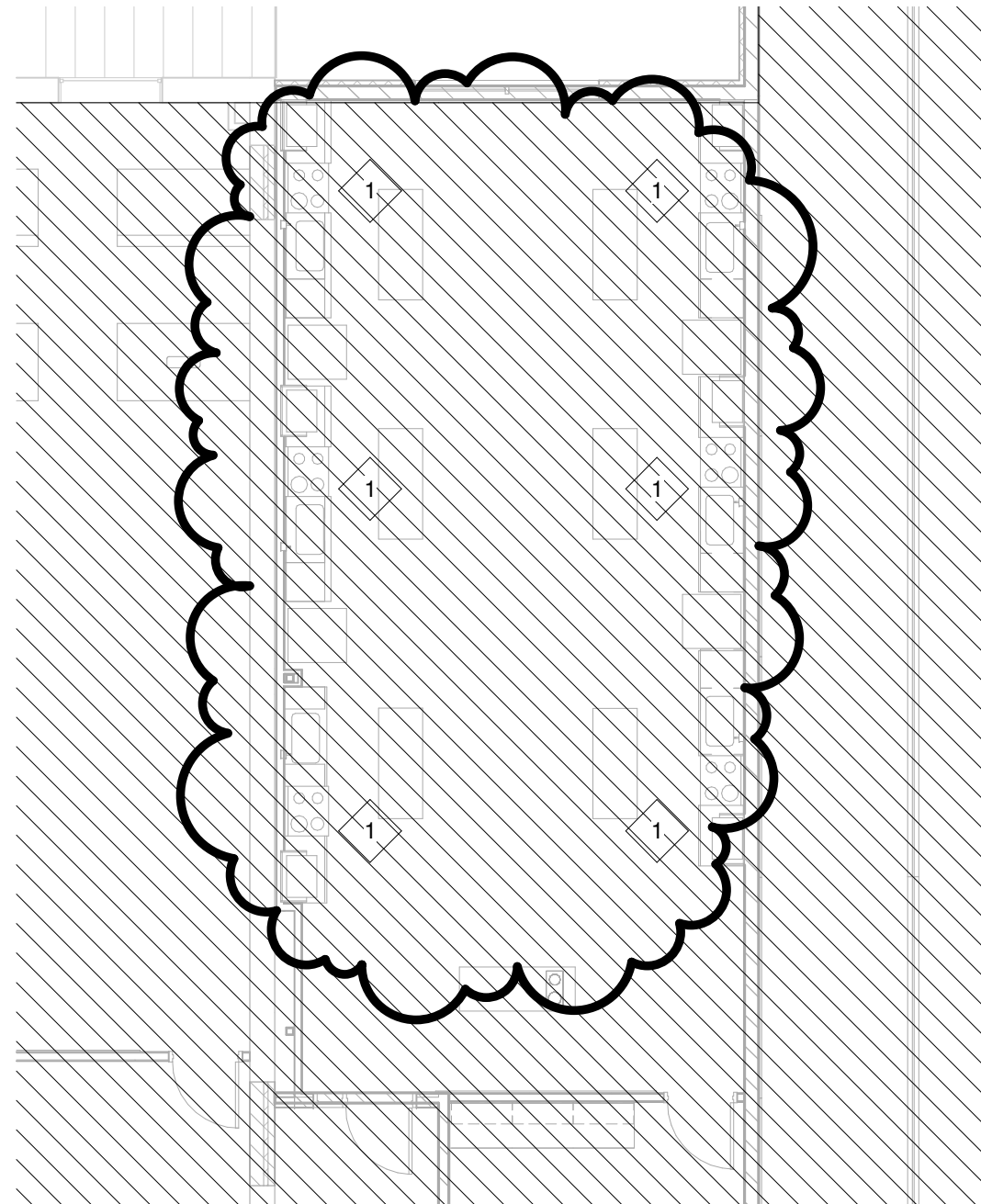
DRAWN: JVR

SCALE: As indicated

SHEET NO: SDF-1

SHEET TITLE: COOKTOP FIRE PROTECTION AT CONSUMER SCIENCE

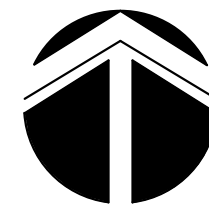
REF: FP1-09



REFERENCED FIRE PROTECTION NOTES (x):

1. PROVIDE HIGH-TEMPERATURE SPRINKLERS IN EXHAUST HOODS OVER COOKING RANGE AND PORTABLE FIRE EXTINGUISHERS IN ACCORDANCE WITH NFPA 96, NFPA 13, AND LIFE SAFETY CODE 101.

1 SECOND FLOOR PARTIAL PLAN - AREA C
SCALE: 1/8" = 1'-0"



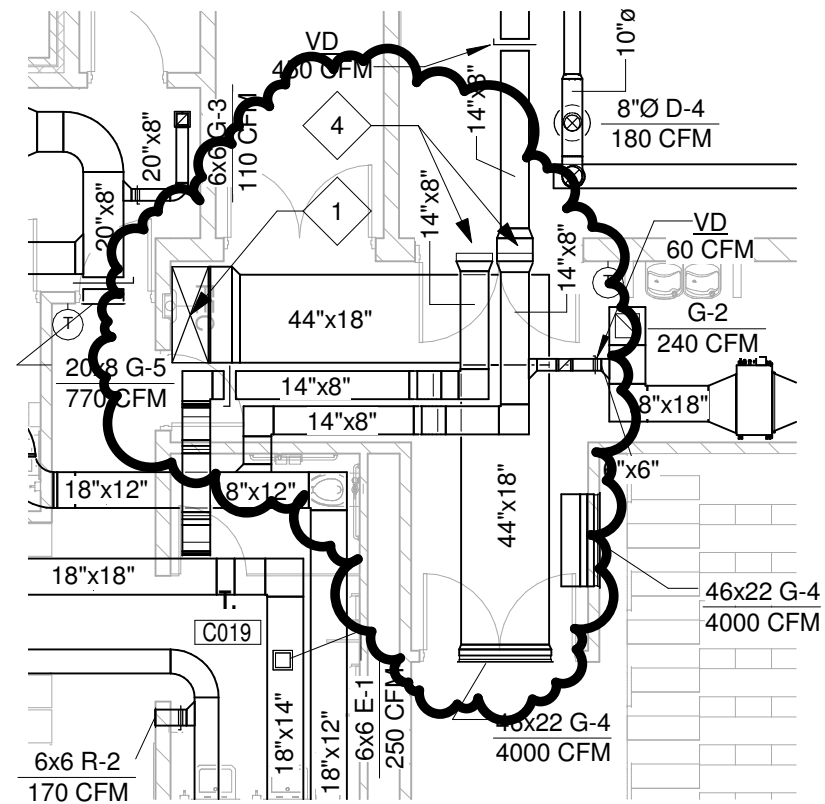
NORTH

SUPPLEMENTAL DRAWING

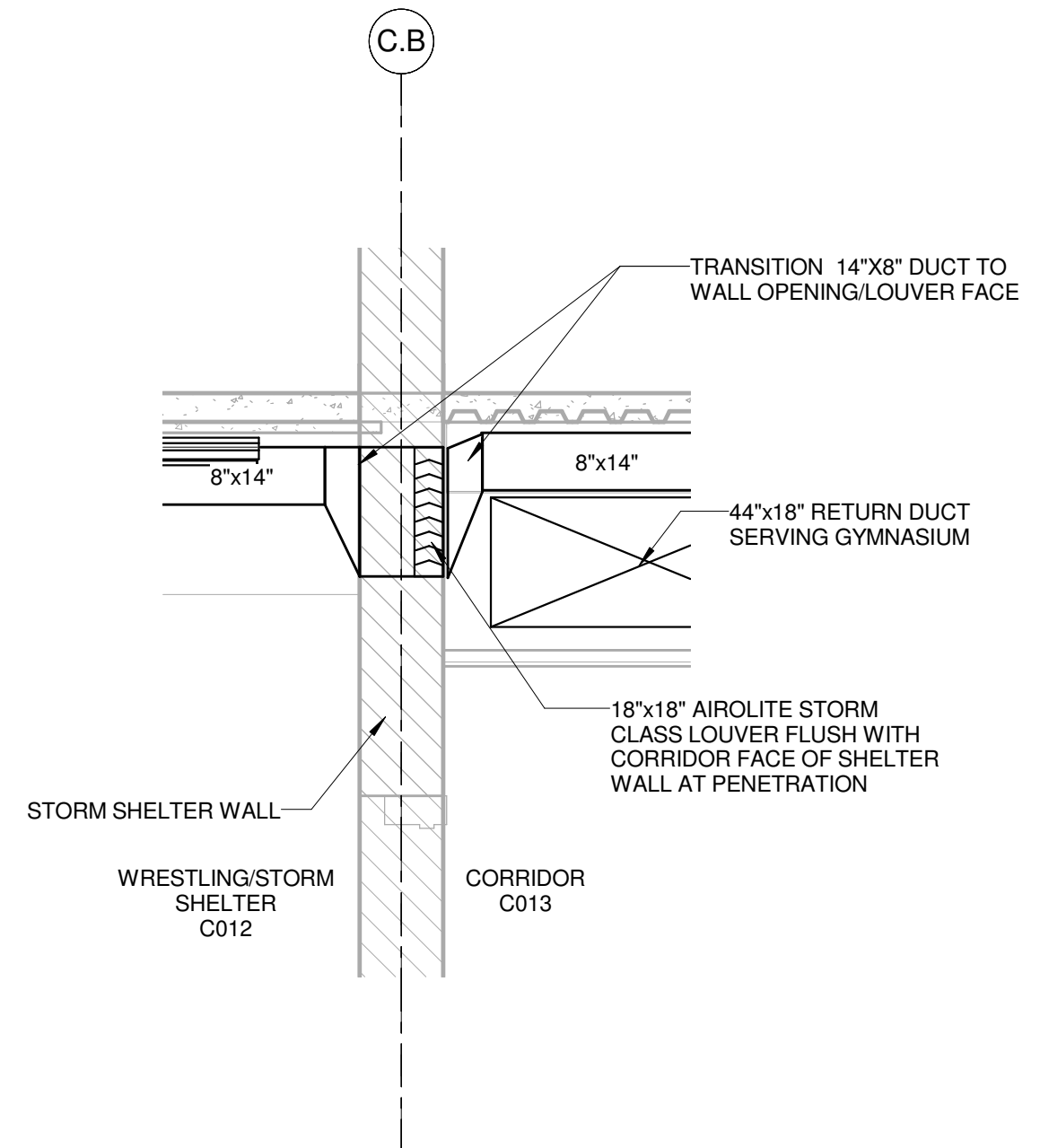
DATE: 02/18/14	DRAWN: JVR	SCALE: As indicated	SHEET NO: SDM-15
SHEET TITLE: STORM SHELTER PENETRATIONS			REF: M1-02

REFERENCED HVAC NOTES (X):

- 48"x18" RETURN DUCT UP THROUGH CHASE ABOVE. SEE SHEET M1-03 FOR CONTINUATION.
- HIGH WALL DUCTLESS SPLIT SYSTEM INDOOR UNIT RELOCATED FROM ROOM SECRETARY A101A TO BE INSTALLED ABOVE DOOR IN THIS SPACE. LOCATE ON ROOF ASSOCIATED OUTDOOR UNIT RELOCATED FORM AREA A ROOF. SEE SHEETS M1-03, M1-09, AND M2-03 FOR ADDITIONAL INFORMATION.
- 18"x18" OUTDOOR AIR AND EXHAUST AIR DUCT UP THROUGH CHASE IN FREEZER C177 TO ERV-5 ON ROOF. SEE SHEET M1-03 FOR CONTINUATION.
- 18"x18" AIROLITE SCH401 STORM CLASS LOUVER OR EQUAL; 0.70 SQ.FT. MINIMUM FREE AREA. TRANSITION 14"x8" DUCTS TO WALL OPENING.



1 LOWER LEVEL PARTIAL PLAN - AREA C
SCALE: 1/8" = 1'-0"



2 DUCT PENETRATION AT SHELTER WALL
SCALE: 1/2" = 1'-0"

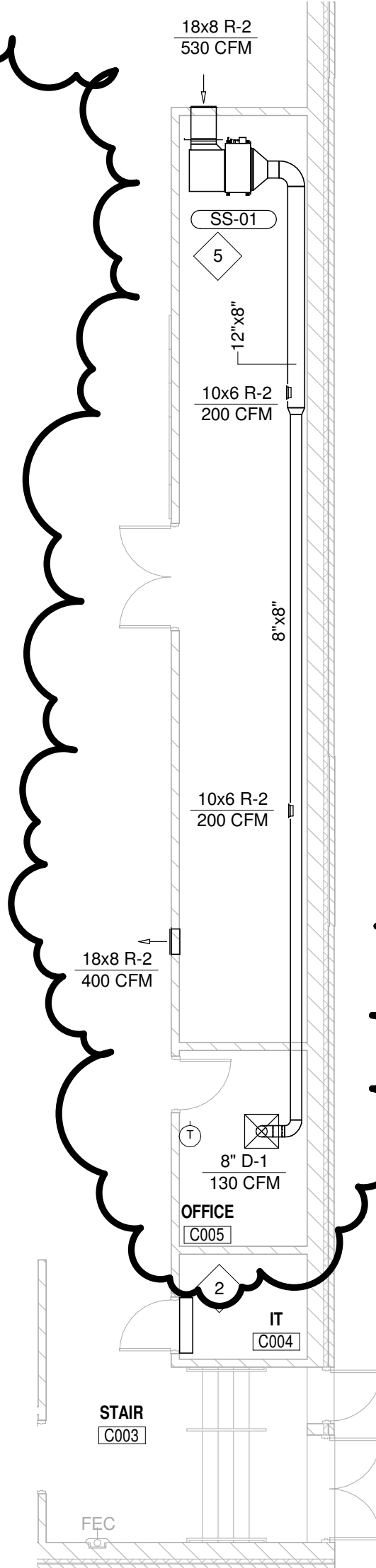
SUPPLEMENTAL DRAWING

DATE: 02/21/14 DRAWN: JVR SCALE: As indicated SHEET NO: SDM-16

SHEET TITLE: SYSTEM TYPE REVISION (FC-79 TO SS-01) REF: M1-02

REFERENCED HVAC NOTES (X):

1. 48"x18" RETURN DUCT UP THROUGH CHASE ABOVE. SEE SHEET M1-03 FOR CONTINUATION.
2. HIGH WALL DUCTLESS SPLIT SYSTEM INDOOR UNIT RELOCATED FROM ROOM SECRETARY A101A TO BE INSTALLED ABOVE DOOR IN THIS SPACE. LOCATE ON ROOF ASSOCIATED OUTDOOR UNIT RELOCATED FORM AREA A ROOF. SEE SHEETS M1-03, M1-09, AND M2-03 FOR ADDITIONAL INFORMATION.
3. 18"x18" OUTDOOR AIR AND EXHAUST AIR DUCT UP THROUGH CHASE IN FREEZER C117 TO ERV-5 ON ROOF. SEE SHEET M1-05 FOR CONTINUATION.
4. 18"x18" AIROLITE SCH401 STORM CLASS LOUVER OR EQUAL, 0.70 SQ.FT. MINIMUM FREE AREA. TRANSITION 14"x8" DUCTS TO WALL OPENING.
5. LOCATE SPLIT SYSTEM HEAT PUMP (SSHP-01) SERVING SPLIT SYSTEM FAN COIL UNIT (SS-01) ON GYMNASIUM ROOF.



1 LOWER LEVEL PARTIAL PLAN - AREA C
SCALE: 1/8" = 1'-0"



SUPPLEMENTAL DRAWING

DATE: 02/21/14

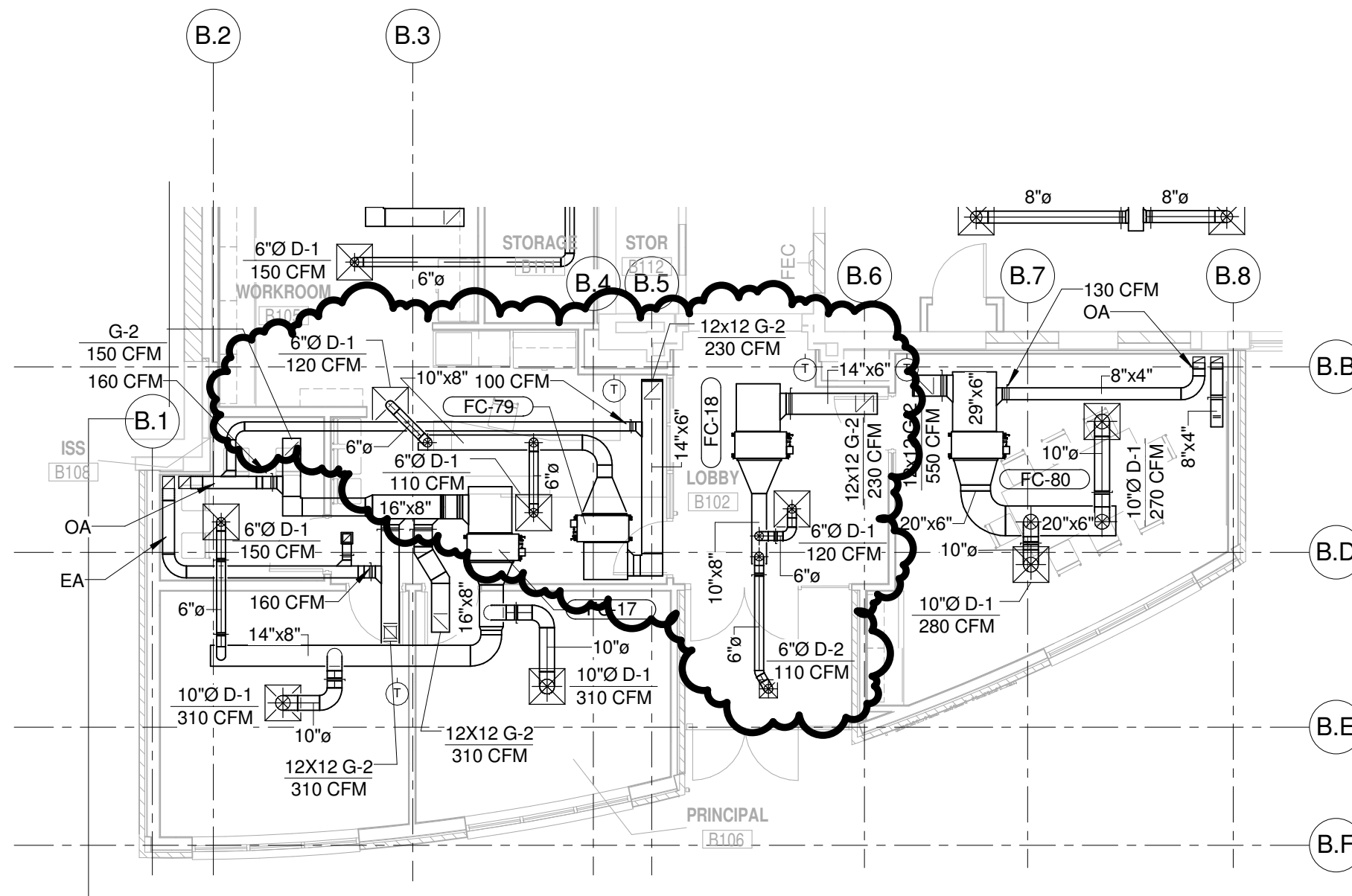
DRAWN: JVR

SCALE: 1/8" = 1'-0"

SHEET NO: SDM-17

SHEET TITLE: ADDED FAN COIL (SEPARATION OF LOBBY)

REF: M1-04



1 FIRST FLOOR PARTIAL PLAN - AREA B
SCALE: 1/8" = 1'-0"



SUPPLEMENTAL DRAWING

DATE: 02/21/14

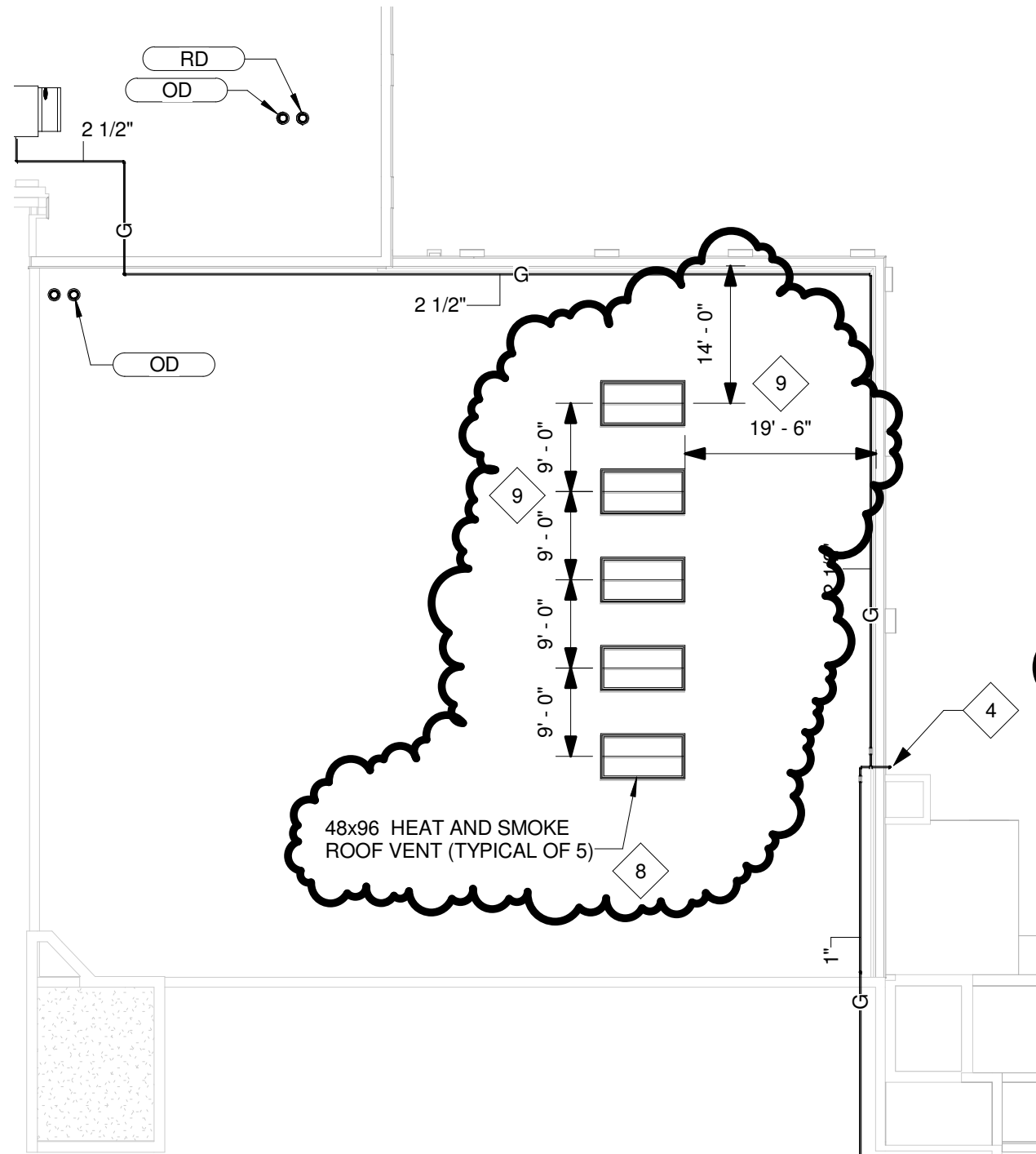
DRAWN: JVR

SCALE: As indicated

SHEET NO: SDM-18

SHEET TITLE: HEAT AND SMOKE VENTS

REF: M1-09



REFERENCED HVAC NOTES (X):

1. REFRIGERANT LINES DOWN ALONG EXTERIOR WALL OF ELEVATOR SHAFT AND THROUGH ROOF TO FIRST FLOOR CEILING SPACE; SEE SHEET M2-06 FOR CONTINUATION.
2. NATURAL GAS PIPE THROUGH WALL TO AHU MEZZANINE; SEE SHEET P1-08 FOR ADDITIONAL INFORMATION.
3. NATURAL GAS PIPE DOWN THROUGH ROOF; SEE PLUMBING SHEET P1-09 FOR ADDITIONAL INFORMATION.
4. NATURAL GAS PIPE DOWN FACE OF EXTERIOR WALL AND THROUGH WALL AND MECHANICAL ROOM; SEE PLUMBING SHEET P1-07 FOR ADDITIONAL INFORMATION.
5. REFRIGERANT PIPING DOWN THROUGH ROOF TO CEILING SPACE BELOW; SEE SHEET M2-07 FOR CONTINUATION.
6. REFRIGERANT PIPING DOWN THROUGH ROOF TO CEILING SPACE BELOW; SEE SHEET M2-08 FOR CONTINUATION.
7. REFRIGERANT PIPING DOWN THROUGH ROOF AND THROUGH FLOOR OF CLOSET SPACE BELOW TO CEILING SPACE OF FIRST FLOOR; SEE SHEETS M2-07 AND M2-08 FOR CONTINUATION.
8. HEAT AND SMOKE VENTS SHALL BE EQUAL TO BILCO 48"X96" DOUBLE LEAF AUTOMATIC FIRE VENT WITH THERMOLATCH ELECTRIC ACTUATOR OPTION.
9. LOCATION AND SPACING APPROXIMATED; ADJUST AS NECESSARY TO COORDINATE WITH EXISTING STRUCTURE BELOW. FIELD VERIFY EXISTING STRUCTURE PRIOR TO CONSTRUCTION.

1 PARTIAL ROOF PLAN - AREA A
SCALE: 1/16" = 1'-0"



SCHEMMER

ARCHITECTS | ENGINEERS | PLANNERS

PROJECT: WEEPING WATER PUBLIC
ADDITIONS & RENOVATION

JOB NO: 06368.001

SUPPLEMENTAL DRAWING

DATE: 02/21/14

DRAWN: JVR

SCALE:

SHEET NO: SDM-19

SHEET TITLE: REVISED/ADDED SCHEDULES

REF: M4-01 & M4-02

VRF FAN COIL UNIT SCHEDULE

MARK	CAPACITY				AIRFLOW (CFM)	SPL (DBA)	ESP IN WG	PWR W	POWER SUPPLY V / HZ / Ø	WGT LBS	MANUFACTURER AND MODEL NUMBER	HEAT PUMP SERVING FAN COIL	REMARKS
	COOLING		HEATING										
	MBH	KW	MBH	KW									
FC-18	7.5	2.2	8.5	2.5	240	34	0.31	150	208 / 60 / 1	57	LG ARNU073BHA2	HP-04	
FC-79	7.5	2.2	8.5	2.5	240	34	0.31	150	208 / 60 / 1	57	LG ARNU073BHA2	HP-04	

SPLIT SYSTEM FAN COIL UNIT SCHEDULE

MARK	CAPACITY				AIRFLOW (CFM)	SPL (DBA)	ESP IN WG	PWR W	POWER SUPPLY V / HZ / Ø	WGT LBS	MANUFACTURER AND MODEL NUMBER	REMARKS
	COOLING		HEATING									
	MBH	KW	MBH	KW								
SS-01	24.0	12.3	27.0	13.8	690	38	0.39	230	208 / 60 / 1	72.8	LG LHN247HV	

SPLIT SYSTEM HEAT PUMP SCHEDULE

MARK	NOM. CAP TON	CAPACITY		POWER V/HZ/Ø	WEIGHT LBS	SOUND PRESSURE DB(A)	NUMBER OF COMPRESSORS	SEER	MANUFACTURER AND MODEL NUMBER	REMARKS
		COOLING MBH	HEATING MBH							
		HP-1	2							