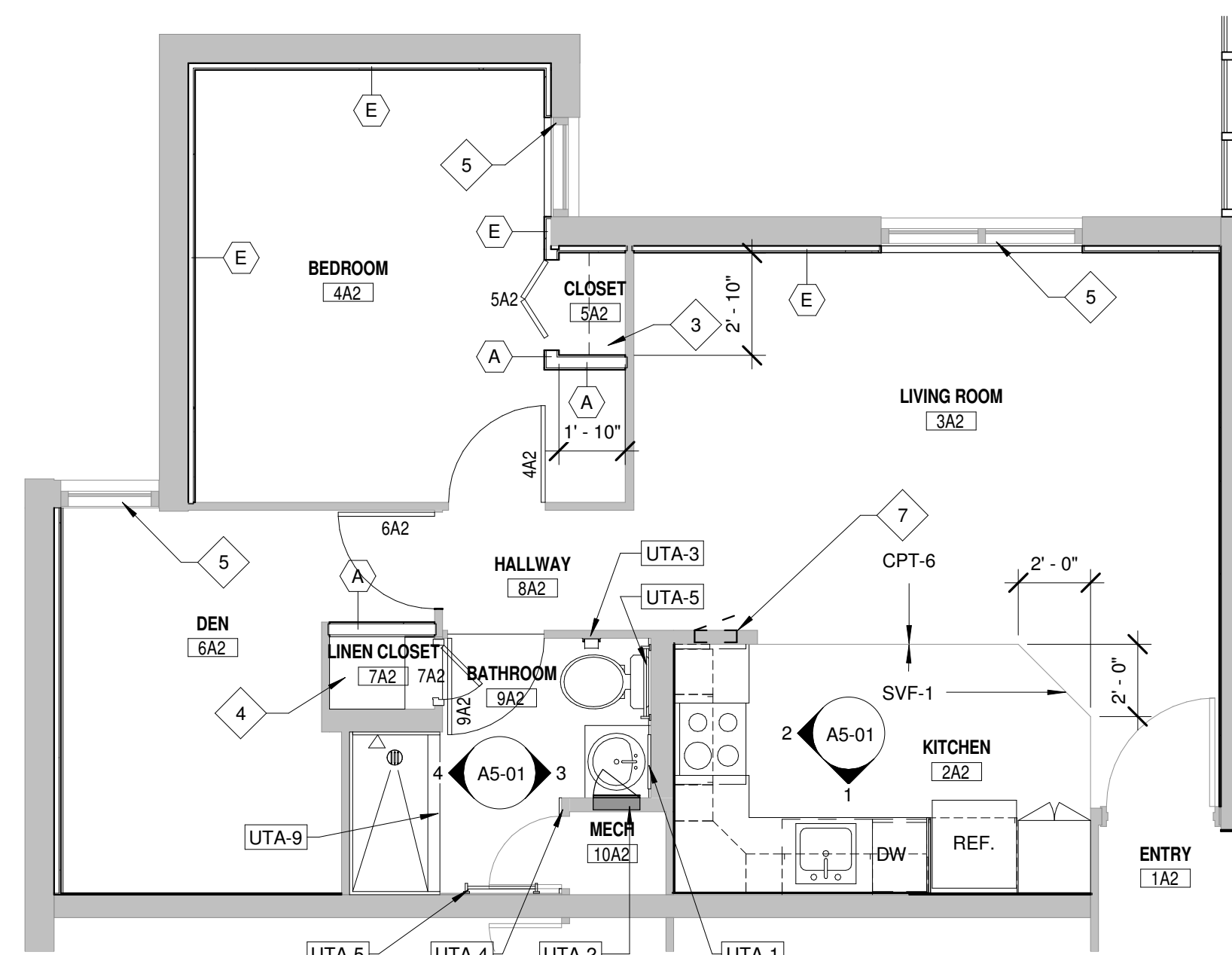
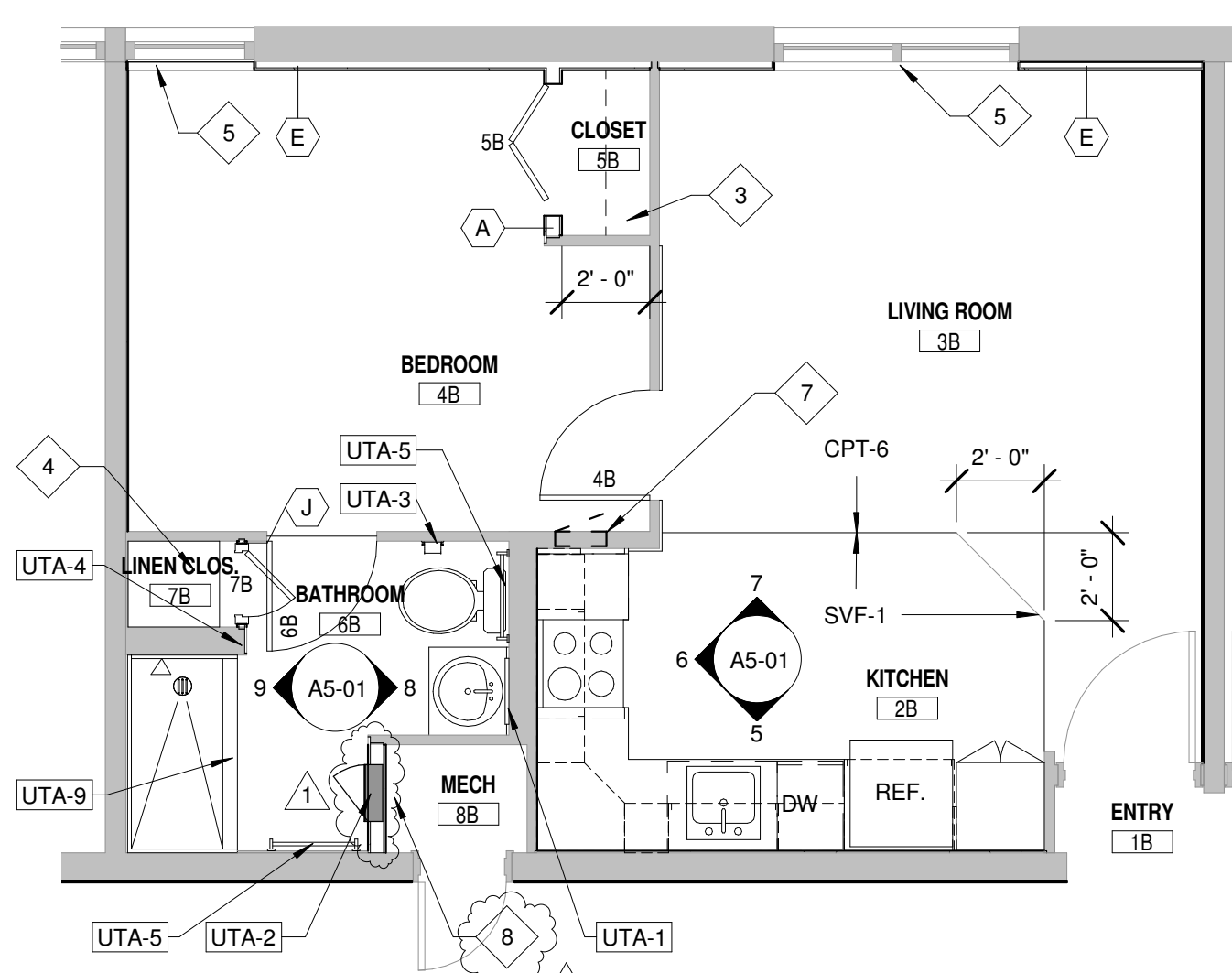


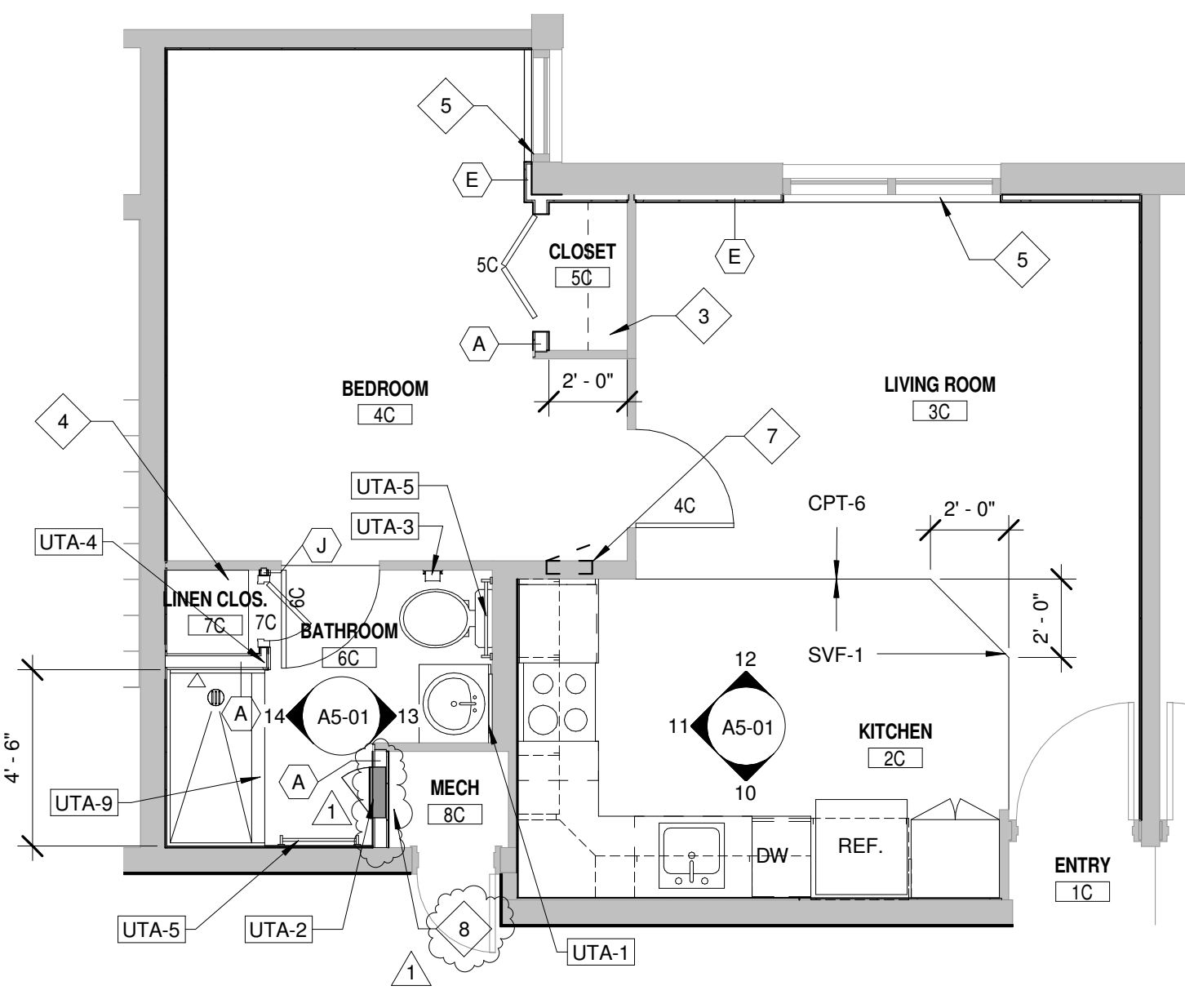
1 TYPICAL UNIT A1 - FLOOR PLAN
SCALE: 1/4" = 1'-0"



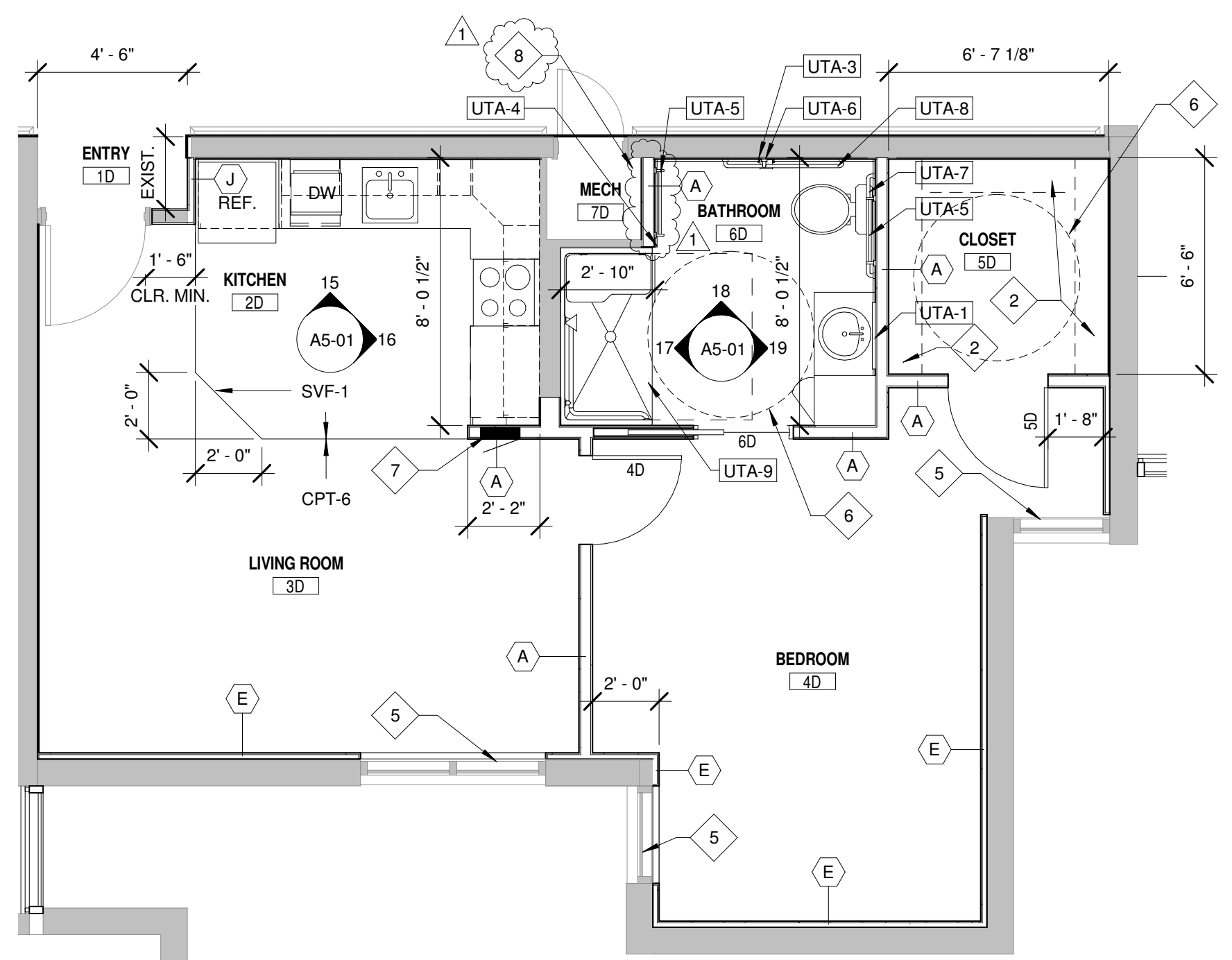
2 TYPICAL UNIT A2 - FLOOR PLAN
SCALE: 1/4" = 1'-0"



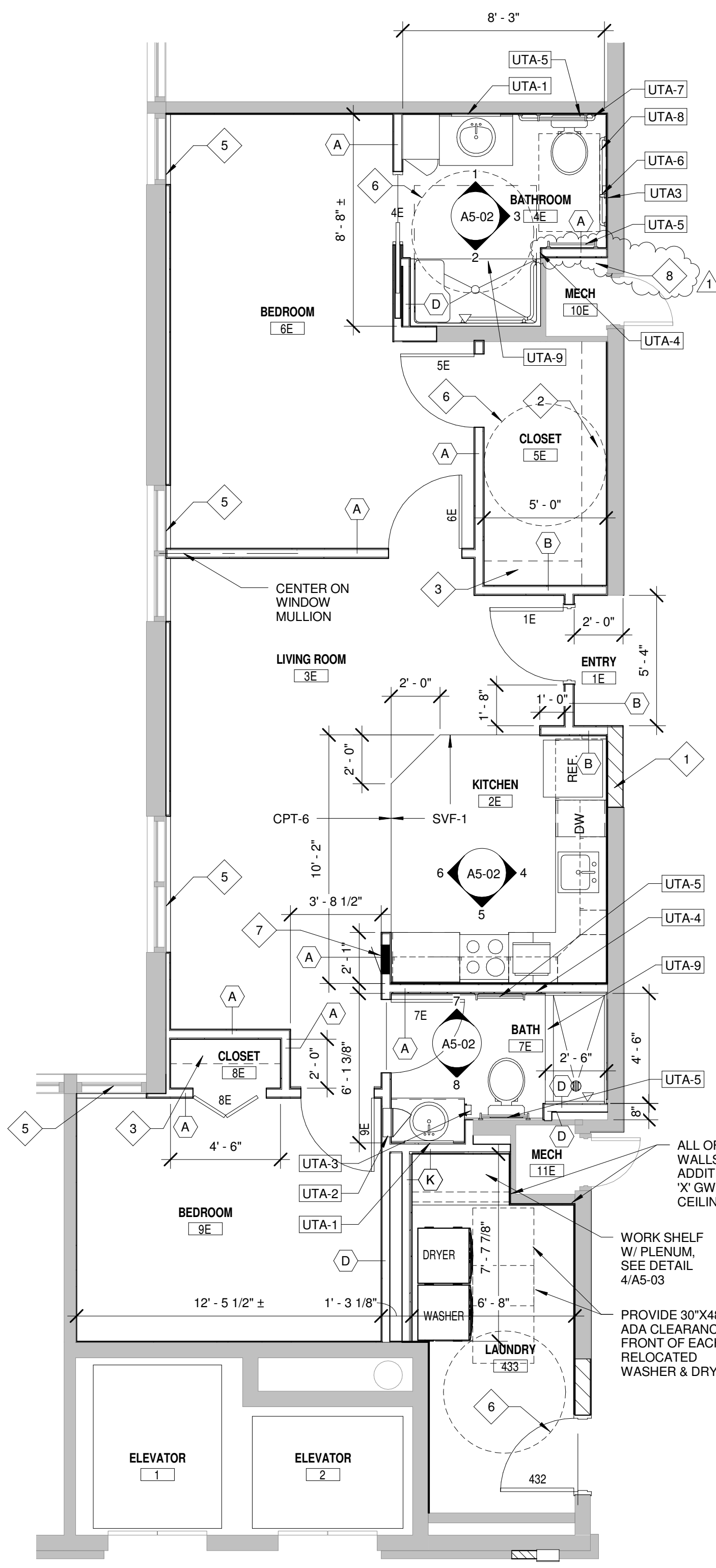
3 TYPICAL UNIT B - FLOOR PLAN
SCALE: 1/4" = 1'-0"



4 TYPICAL UNIT C - FLOOR PLAN
SCALE: 1/4" = 1'-0"



5 UNIT D - FLOOR PLAN (UFAS & ADA)
SCALE: 1/4" = 1'-0"



6 UNIT E - FLOOR PLAN (UFAS & ADA)
SCALE: 1/4" = 1'-0"

TYPICAL GENERAL NOTES:

- SEE SHEET A1-01 FOR GENERAL NOTES.
- SEE SHEET A1-01 PARTITION TYPES.

REFERENCED PLAN NOTES (X):

- INFILL W/ MASONRY TO MATCH THE EXISTING.
- SHELF & CLOTHES ROD. MOUNT TOP OF SHELF AT 4'-0" AFF. (ADA UNITS)
- SHELF & CLOTHES ROD. MOUNT TOP OF SHELF AT 5'-8" AFF.
- PROVIDE FOUR 24" DEEP ADJUSTABLE SHELVES THE WIDTH OF THE LINEN CLOSET.
- PROVIDE WOOD JAMB EXTENSIONS & 2 1/2" TRIM AROUND ALL WINDOWS. PAINT TO MATCH EXISTING.
- 5'-0" DIAMETER ADA TURNING RADIUS.
- ELECTRICAL PANEL. SEE ELECTRICAL FOR SPECIFICATIONS
- INSTALL NEW FLUES IN THE LOCATION OF THE DEMOLISHED WALL. COORDINATE EXACT LOCATION W/ MECHANICAL.

UNIT TOILET ACCESSORIES (UTA-X):

NUMBER	DESCRIPTION
UTA-1	MIRROR - SEE ELEVATIONS
UTA-2	RECESSED MEDICINE CABINET
UTA-3	TOILET TISSUE HOLDER
UTA-4	DOUBLE HOOK, MOUNT @ 5'-0" AFF (4'-0" AFF AT ALL ADA UNITS)
UTA-5	18" TOWEL BAR, MOUNT @ 4'-0" TO CL
UTA-6	GRAB BAR - 18" (VERTICAL)
UTA-7	GRAB BAR 36" (HORIZONTAL)
UTA-8	GRAB BAR 42" (HORIZONTAL)
UTA-9	SHOWER CURTAIN & HOOK (ROD IS FURNISHED WITH THE SHOWER UNIT)
UTA-10	UNDER LAVATORY GUARD

DESIGNED: PJB
REVISIONS: No.
DRAWN: DDP
CHECKED: KGF
DATE: 02/05/2014
BY: DESCRIPTION:
ADDENDUM #1

THIS DOCUMENT WAS
ISSUED AND
SEALED BY
BRUCE A. ZENNER
ON 02/05/2014 FOR
THE PROJECT
ADDRESS: 721 S 1ST AVENUE
HASTINGS, NE 68901
PROJECT NO.: 06298.003
DATE: 02/05/2014
SCALE: 1/4" = 1'-0"
BY: KGF
THIS MEDIA SHOULD NOT
BE REPRODUCED OR
TRANSMITTED IN ANY
FORM OR BY ANY
MEANS, ELECTRONIC
OR MECHANICAL,
INCLUDING PHOTOCOPYING,
RECORDING, OR BY
ANY INFORMATION
SYSTEMS.

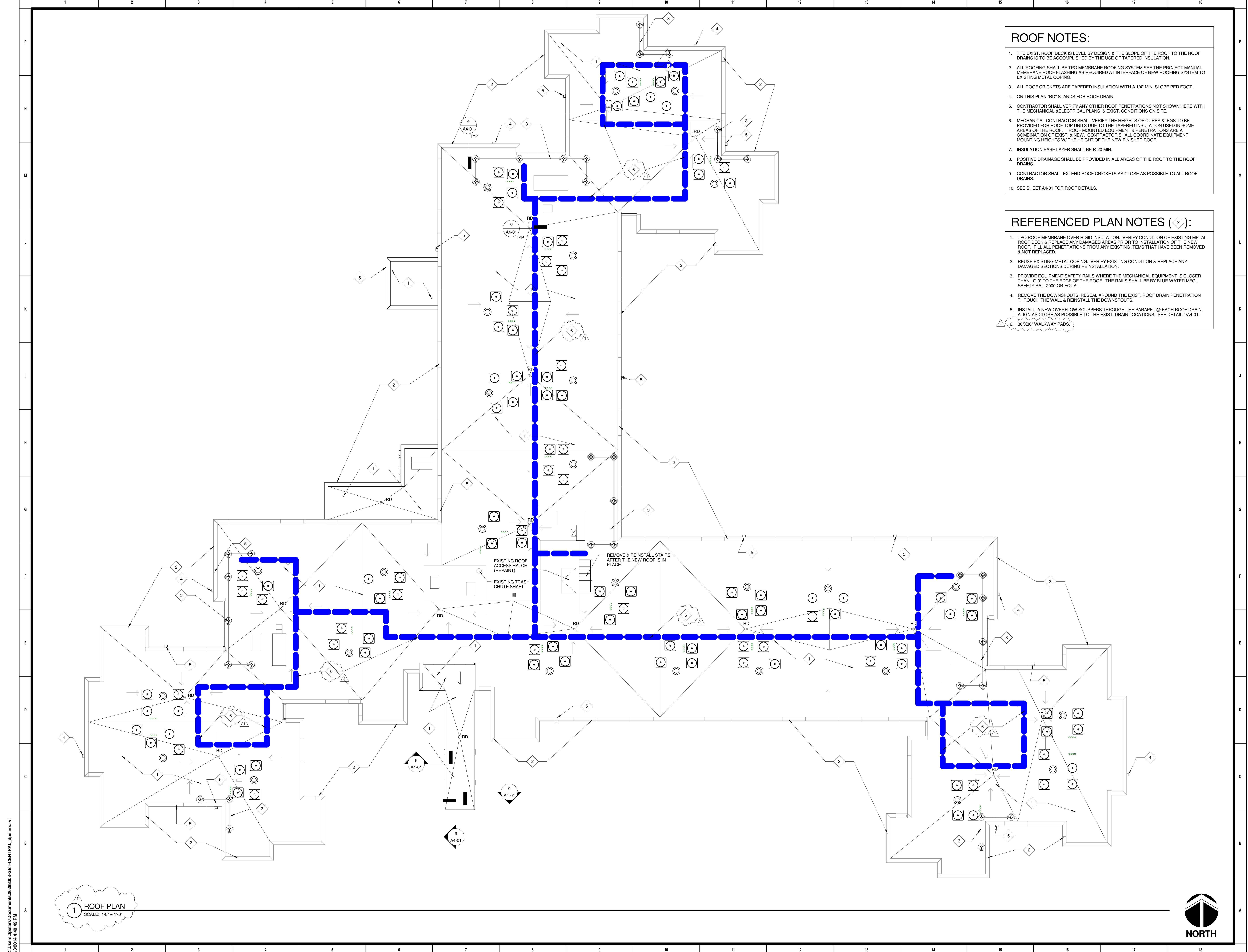
SCHEMMER
ARCHITECTS | ENGINEERS | PLANNERS

GOLDBECK TOWERS
721 S 1ST AVENUE
HASTINGS, NE 68901

ENLARGED UNIT FLOOR PLANS

PROJECT NO.: 06298.003

A1-05



- ROOF NOTES:**
1. THE EXIST. ROOF DECK IS LEVEL BY DESIGN & THE SLOPE OF THE ROOF TO THE ROOF DRAINS IS TO BE ACCOMPLISHED BY THE USE OF TAPERED INSULATION.
 2. ALL ROOFING SHALL BE TPO MEMBRANE ROOFING SYSTEM SEE THE PROJECT MANUAL MEMBRANE ROOF FLASHING AS REQUIRED AT INTERFACE OF NEW ROOFING SYSTEM TO EXISTING METAL COPING.
 3. ALL ROOF CRICKETS ARE TAPERED INSULATION WITH A 1/4" MIN. SLOPE PER FOOT.
 4. ON THIS PLAN "RD" STANDS FOR ROOF DRAIN.
 5. CONTRACTOR SHALL VERIFY ANY OTHER ROOF PENETRATIONS NOT SHOWN HERE WITH THE MECHANICAL, ELECTRICAL PLANS, & EXIST. CONDITIONS ON SITE.
 6. MECHANICAL CONTRACTOR SHALL VERIFY THE HEIGHTS OF CURBS ALIGNS TO BE PROVIDED FOR ROOF TOP UNITS DUE TO THE TAPERED INSULATION USED IN SOME AREAS OF THE ROOF. ROOF MOUNTED EQUIPMENT & PENETRATIONS ARE A COMBINATION OF EXIST. & NEW. CONTRACTOR SHALL COORDINATE EQUIPMENT MOUNTING HEIGHTS W/ THE HEIGHT OF THE NEW FINISHED ROOF.
 7. INSULATION BASE LAYER SHALL BE R-20 MIN.
 8. POSITIVE DRAINAGE SHALL BE PROVIDED IN ALL AREAS OF THE ROOF TO THE ROOF DRAINS.
 9. CONTRACTOR SHALL EXTEND ROOF CRICKETS AS CLOSE AS POSSIBLE TO ALL ROOF DRAINS.
 10. SEE SHEET A4-01 FOR ROOF DETAILS.

- REFERENCED PLAN NOTES (◇):**
1. TPO ROOF MEMBRANE OVER RIGID INSULATION. VERIFY CONDITION OF EXISTING METAL ROOF DECK & REPLACE ANY DAMAGED AREAS PRIOR TO INSTALLATION OF THE NEW ROOF. FILL ALL PENETRATIONS FROM ANY EXISTING ITEMS THAT HAVE BEEN REMOVED & NOT REPLACED.
 2. REUSE EXISTING METAL COPING. VERIFY EXISTING CONDITION & REPLACE ANY DAMAGED SECTIONS DURING REINSTALLATION.
 3. PROVIDE EQUIPMENT SAFETY RAILS WHERE THE MECHANICAL EQUIPMENT IS CLOSER THAN 10'-0" TO THE EDGE OF THE ROOF. THE RAILS SHALL BE BY BLUE WATER MFG., SAFETY RAIL 2000 OR EQUAL.
 4. REMOVE THE DOWNSPOUTS, RESEAL AROUND THE EXIST. ROOF DRAIN PENETRATION THROUGH THE WALL & REINSTALL THE DOWNSPOUTS.
 5. INSTALL A NEW OVERFLOW SCUPPERS THROUGH THE PARAPET @ EACH ROOF DRAIN. ALIGN AS CLOSE AS POSSIBLE TO THE EXIST. DRAIN LOCATIONS. SEE DETAIL 4/A4-01.
 6. 30"x30" WALKWAY PADS.

1 ROOF PLAN
SCALE: 1/8" = 1'-0"

DESIGNED: PJB
 REVISIONS: No.
 DRAWN: DPK/AH
 CHECKED: KGF

ISSUE DATE: 11/14
 DATE: 02/05/2014
 BY: DESCRIPTION:
 A4-01

THIS DOCUMENT WAS
 SEALING AND
 ON 11/14/14
 THIS MEDIA SHOULD NOT
 BE REPRODUCED OR
 TRANSMITTED IN ANY
 FORM OR BY ANY
 MEANS, ELECTRONIC
 OR MECHANICAL,
 INCLUDING PHOTOCOPYING,
 RECORDING, OR BY
 ANY INFORMATION
 STORAGE AND
 RETRIEVAL SYSTEM,
 WITHOUT PERMISSION
 IN WRITING FROM
 SCHEMMER ARCHITECTS

SCHEMMER
 ARCHITECTS | ENGINEERS | PLANNERS

GOLDBECK TOWERS
 721 S 1ST AVENUE
 HASTINGS, NE 68901

ROOF PLAN

PROJECT NO.: 06298.003

A1-07

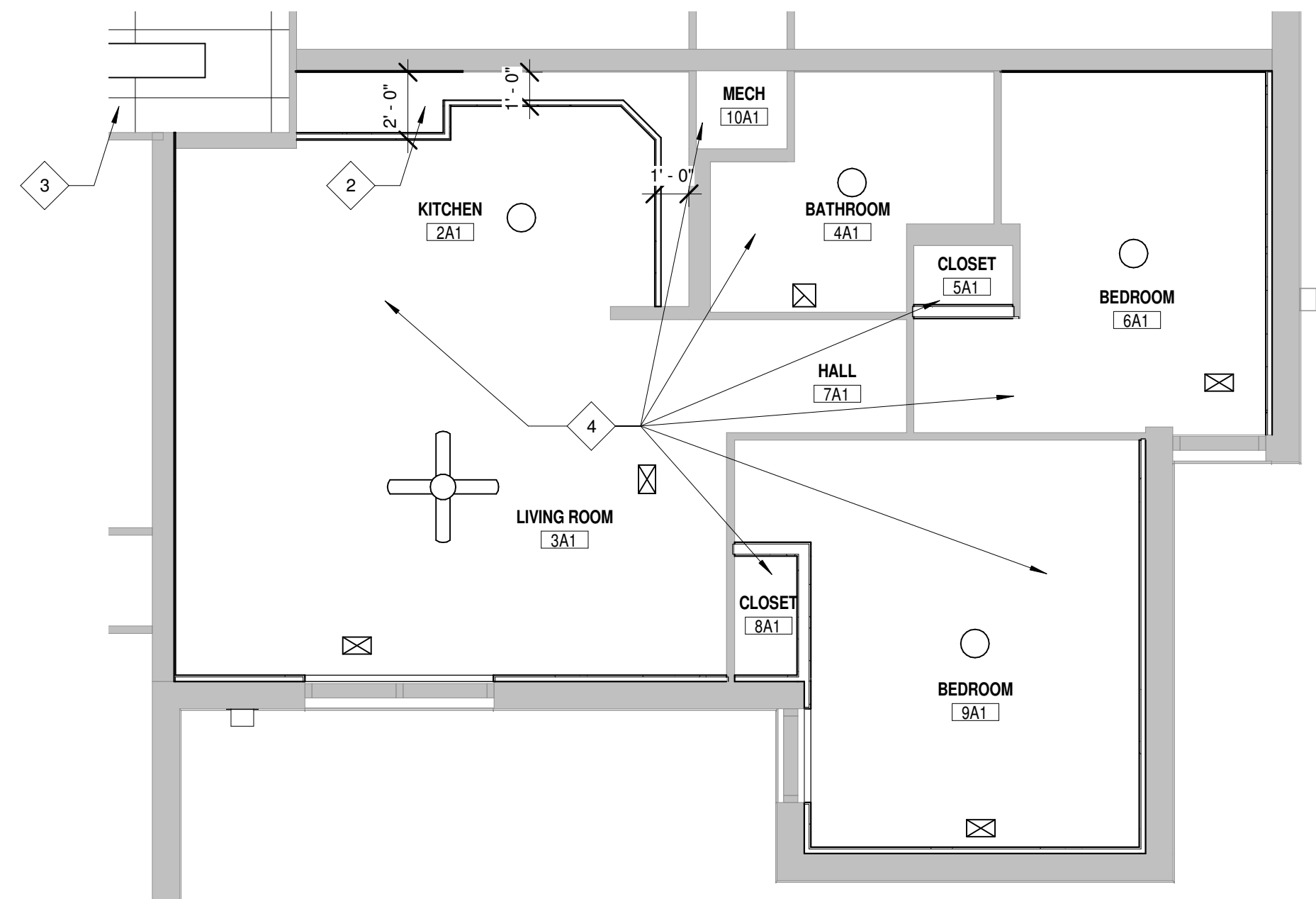


CEILING GENERAL NOTES (◇):

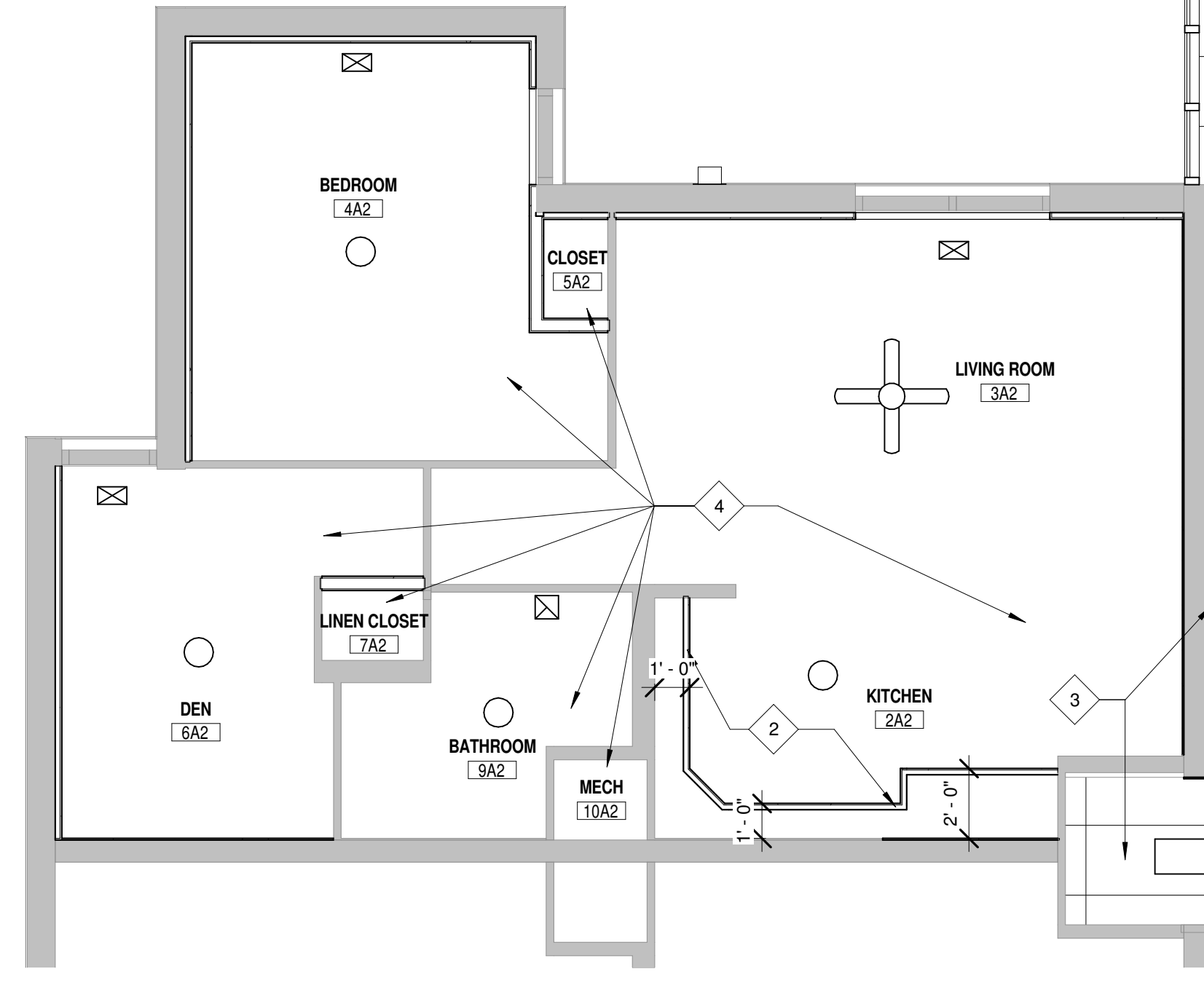
1. ALL GWB UNIT CEILINGS THAT HAVE BEEN ABATED & ALL NEW GWB CEILINGS SHALL RECEIVE A NEW DRYWALL STOMPED FINISH. MATCH THE EXISTING GSS CAMPUS STANDARDS. (PAINT P-1)
2. ALL GWB COMMONS CEILINGS THAT HAVE BEEN ABATED & ALL NEW GWB CEILINGS SHALL RECEIVE A NEW DRYWALL SMOOTH FINISH. (PAINT P-1)
3. ALL CORRIDORS WALLS ARE 20 MINUTE RATED.

REFERENCED PLAN NOTES (◇):

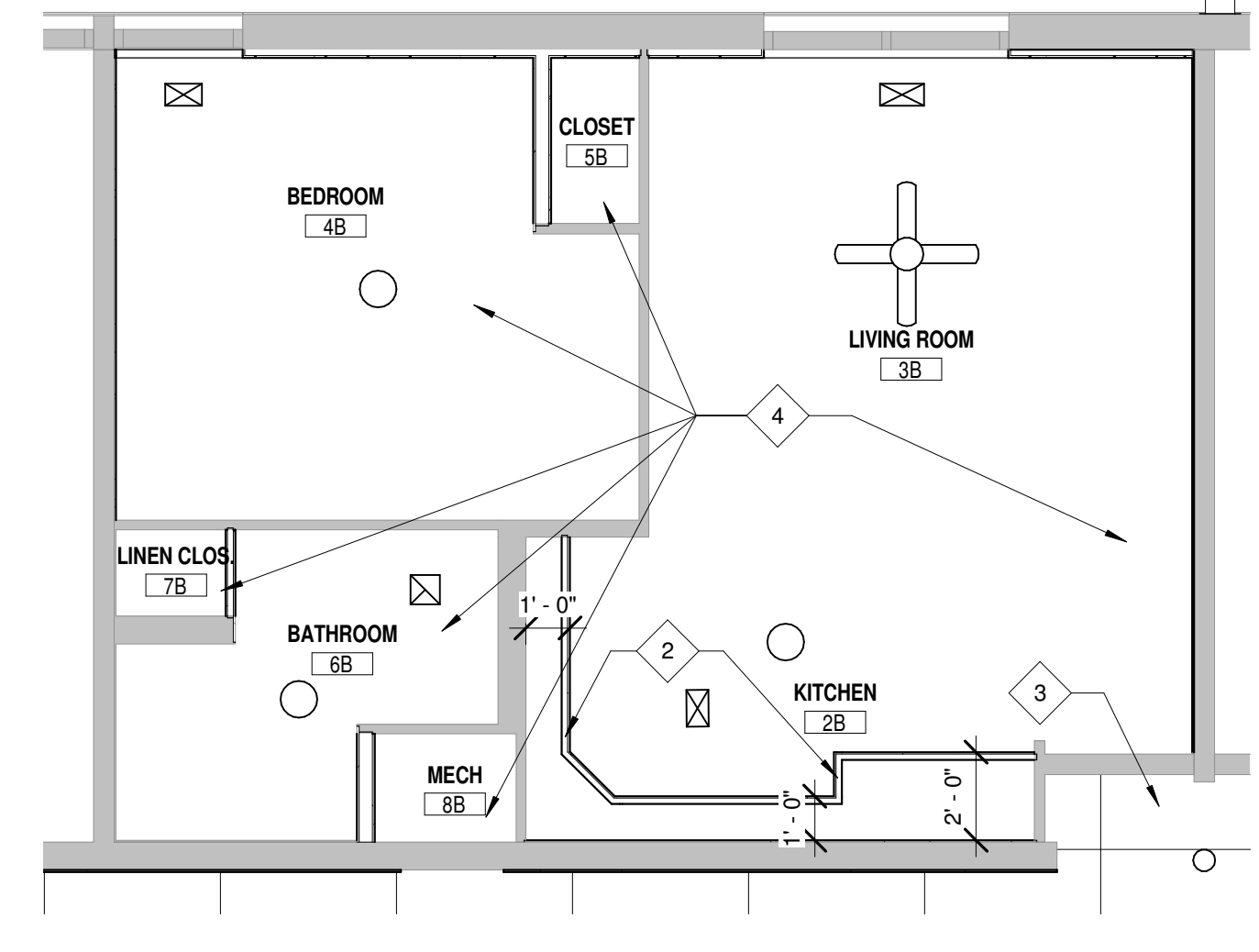
1. LOWERED GYP. BD. CEILING, 7'-6" AFF. PROVIDE ACCESS DOORS TO SPRINKLER & HVAC DUCTS. SEE MECHANICAL & ELECTRICAL FOR LOCATION & SIZE.
2. GYP. BD. BULKHEAD FROM THE TOP OF THE CABINETS TO THE CEILING.
3. NEW ATC IN CORRIDORS.
4. NEW 5/8" TYPE 'X' GWB ON EXISTING FRAMING IN ALL UNITS.



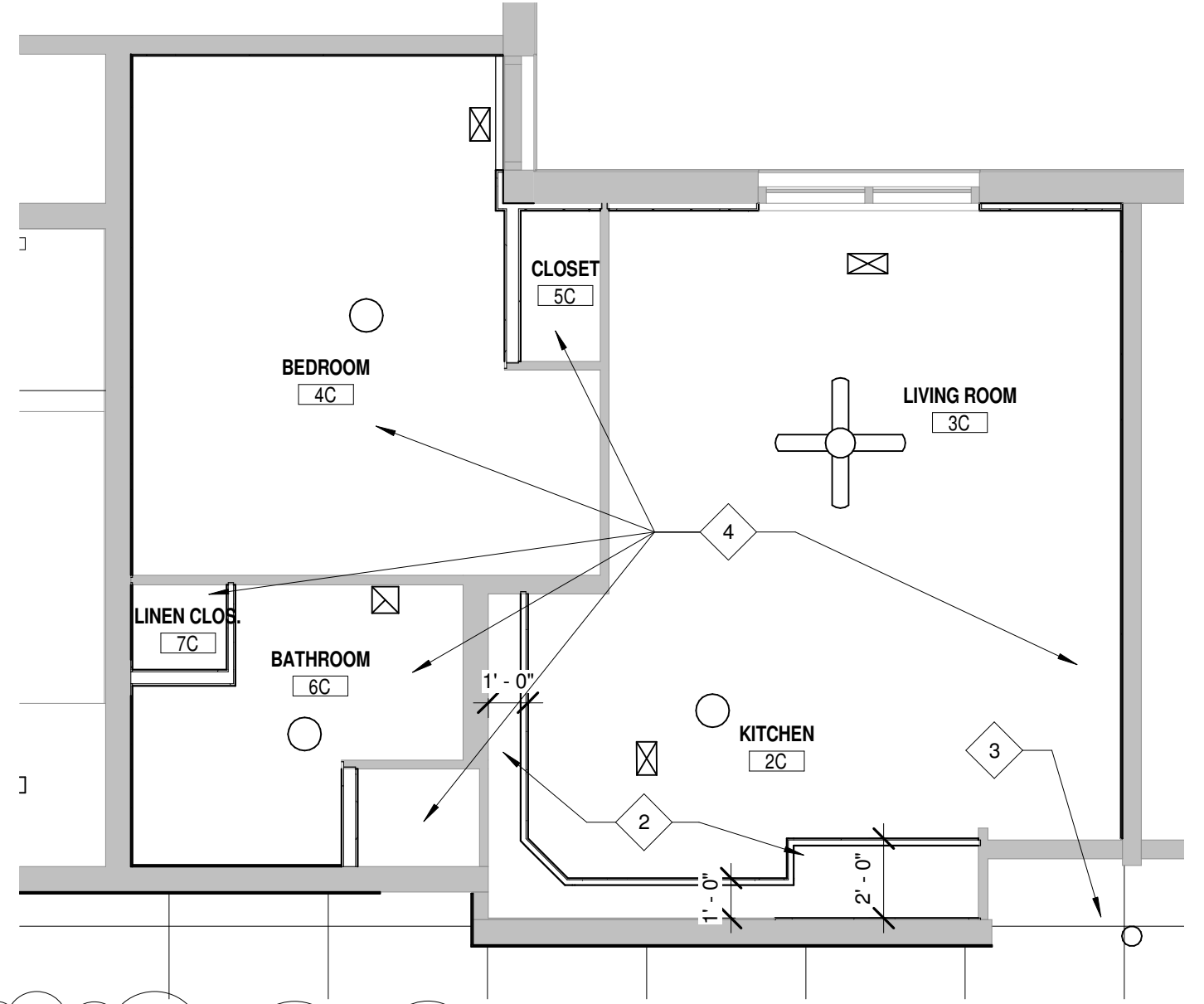
1 TYPICAL UNIT A1 - REFLECTED CEILING PLAN
SCALE: 1/4" = 1'-0"



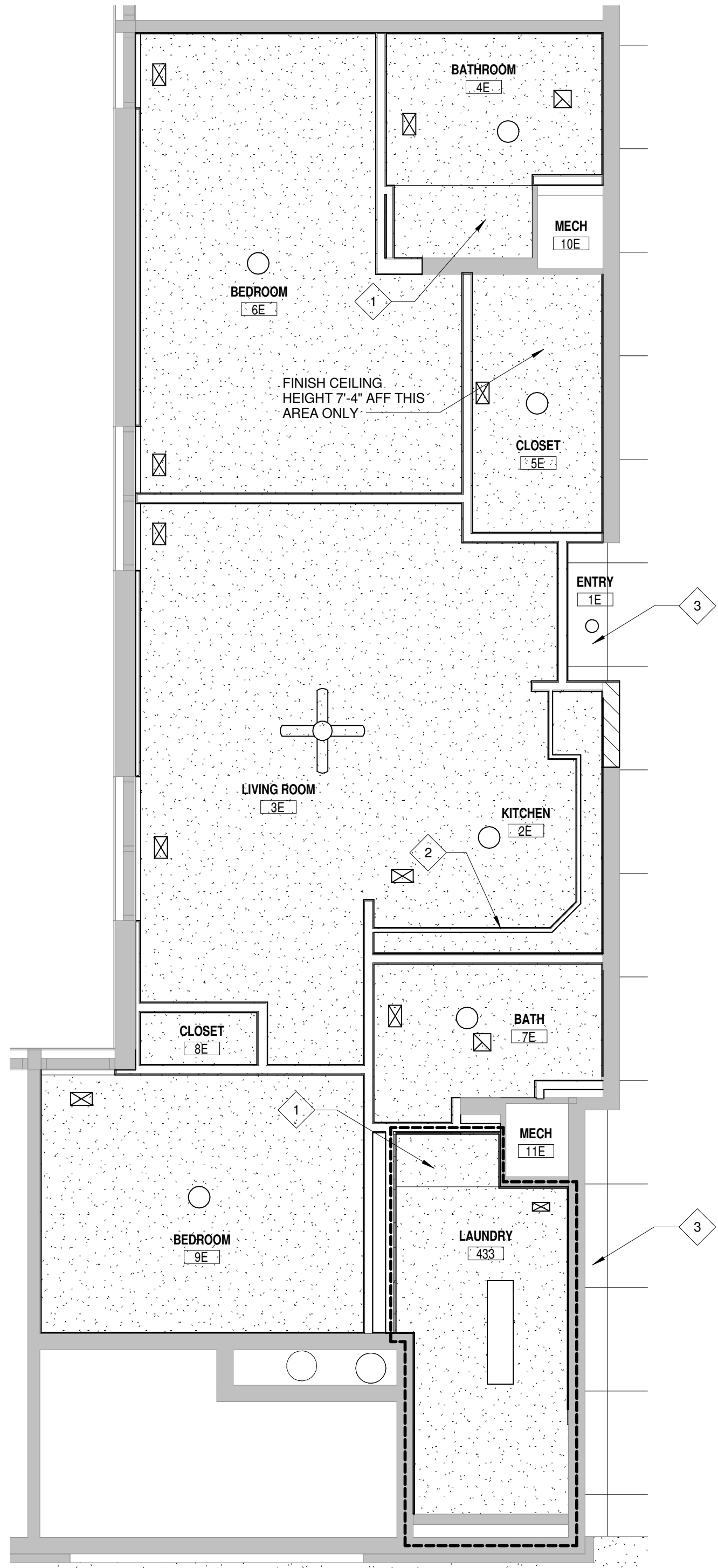
2 TYPICAL UNIT A2 - REFLECTED CEILING PLAN
SCALE: 1/4" = 1'-0"



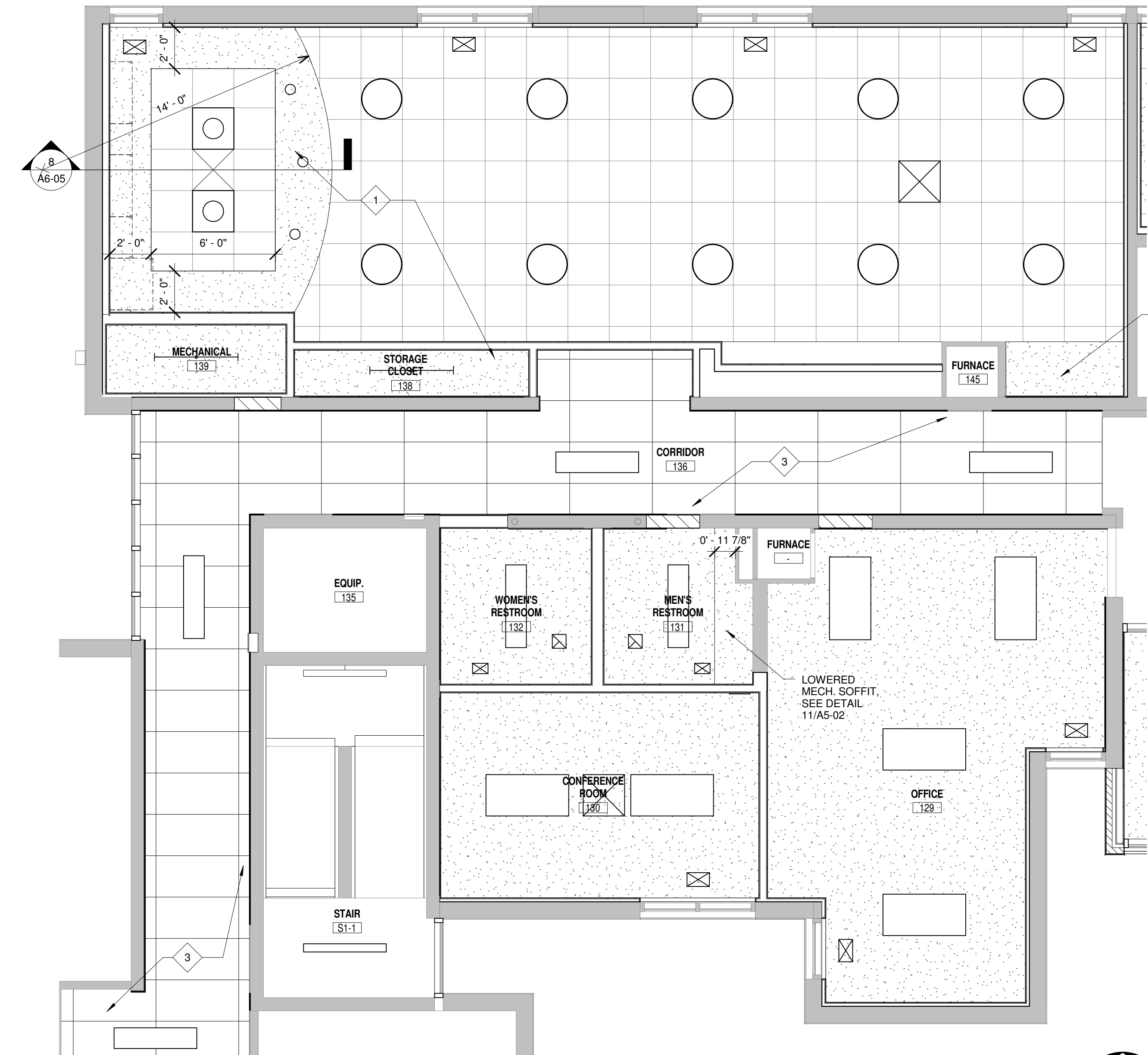
3 TYPICAL UNIT B - REFLECTED CEILING PLAN
SCALE: 1/4" = 1'-0"



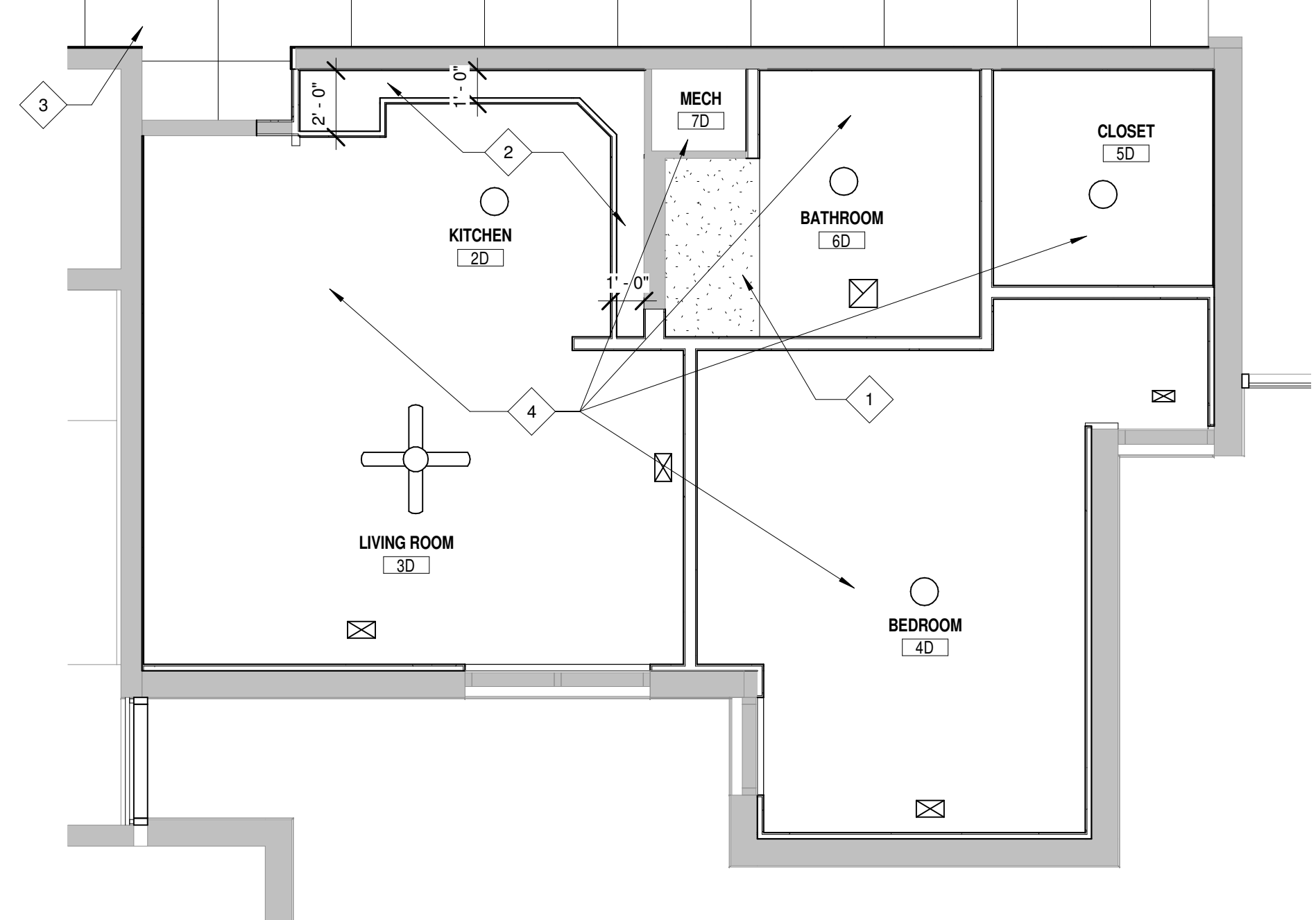
4 TYPICAL UNIT C - REFLECTED CEILING PLAN
SCALE: 1/4" = 1'-0"



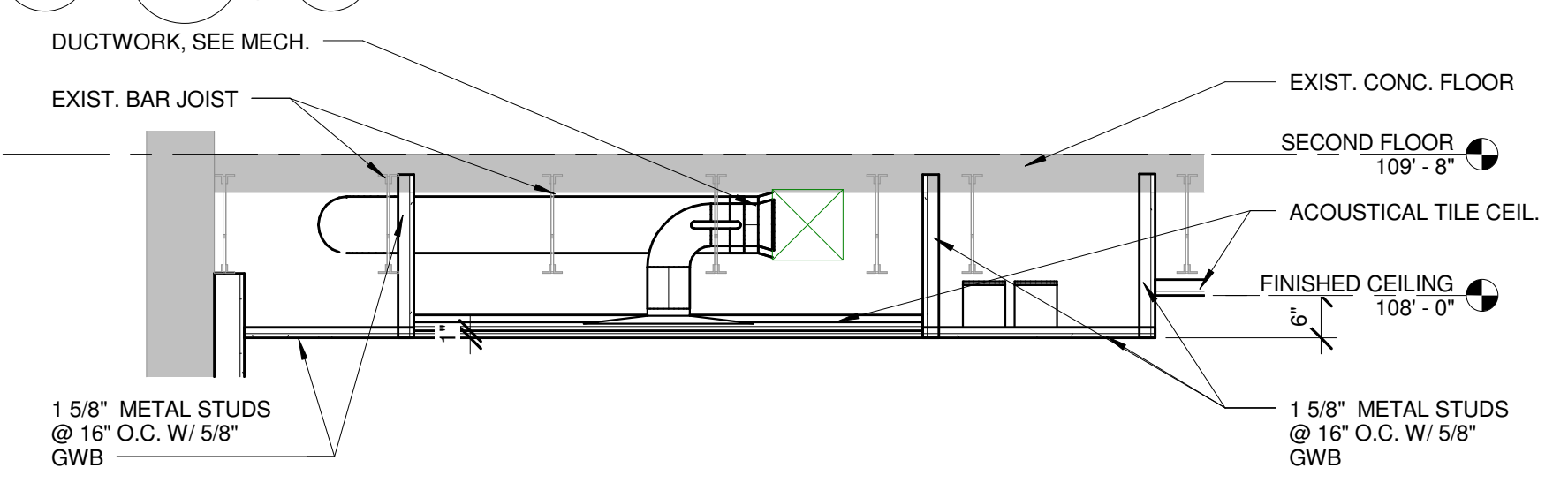
6 TYPICAL UNIT E - REFLECTED CEILING PLAN
SCALE: 1/4" = 1'-0"



7 COMMON AREA - REFLECTED CEILING PLAN
SCALE: 1/4" = 1'-0"



5 TYPICAL UNIT D - REFLECTED CEILING PLAN
SCALE: 1/4" = 1'-0"



8 BULKHEAD DETAIL
SCALE: 1/2" = 1'-0"

DESIGNED: PJB
DRAWN: DDP
CHECKED: KGF

ISSUE DATE: 11/14
REVISIONS:
NO. DATE BY: DESCRIPTION
1 02/05/2014
ADDENDUM #1

THIS DOCUMENT WAS
ISSUED AND
SEALED BY
ARCHITECT
ON THIS DATE
THIS MEDIA SHOULD NOT
BE REPRODUCED OR
TRANSMITTED IN ANY
FORM OR BY ANY
MEANS, ELECTRONIC
OR MECHANICAL,
INCLUDING PHOTOCOPYING,
RECORDING, OR BY
ANY INFORMATION
SYSTEMS WITHOUT THE
WRITTEN PERMISSION
OF THE ARCHITECT.

SCHEMMER
ARCHITECTS | ENGINEERS | PLANNERS

GOLDBECK TOWERS
721 S 1ST AVENUE
HASTINGS, NE 68901

LARGE SCALE REFLECTED CEILING PLANS

PROJECT NO.: 06298.003

A6-05

SUPPLEMENTAL DRAWING

DATE: 02/05/14

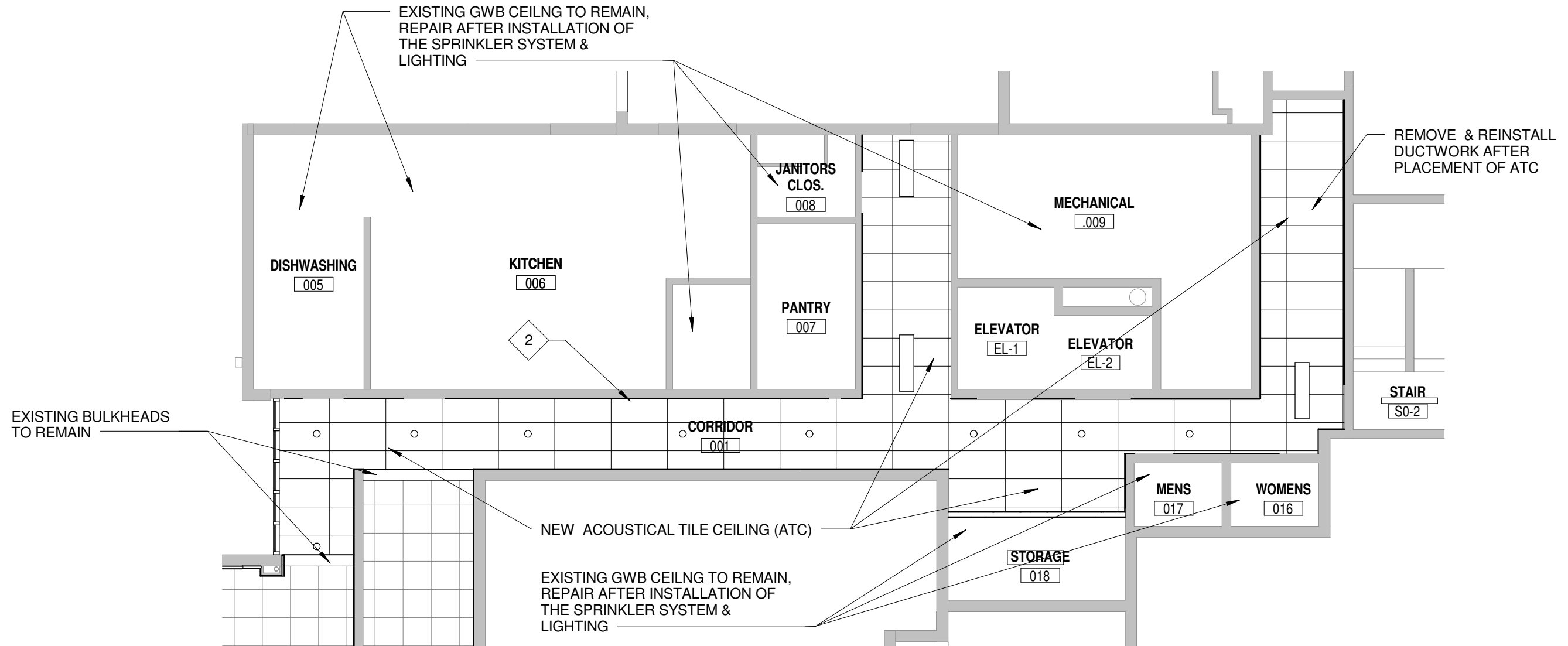
DRAWN: DKP

SCALE: 1/8" = 1'-0"

SHEET NO: SDA-01

SHEET TITLE: ADDENDUM #1

REF: A6-01



PARTIAL BASEMENT REFLECTED CEILING PLAN

1 SCALE: 1/8" = 1'-0"

SUPPLEMENTAL DRAWING

DATE: 02/05/14

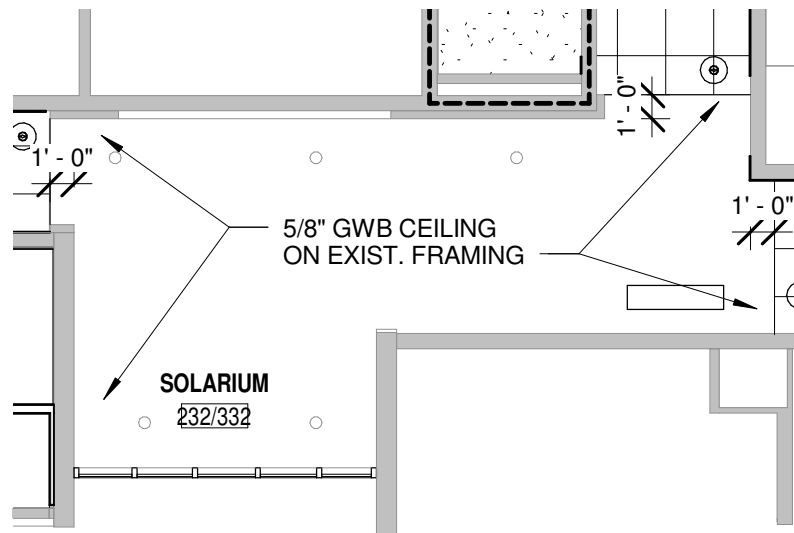
DRAWN: DKP

SCALE: 1/8" = 1'-0"

SHEET NO: SDA-02

SHEET TITLE: ADDENDUM #1

REF: A6-02, A6-03



PARTIAL CEILING PLAN @ ELEVATOR LOBBY
2nd, 3rd & 4th FLOORS

1

SCALE: 1/8" = 1'-0"

SUPPLEMENTAL DRAWING

DATE: 01/31/14

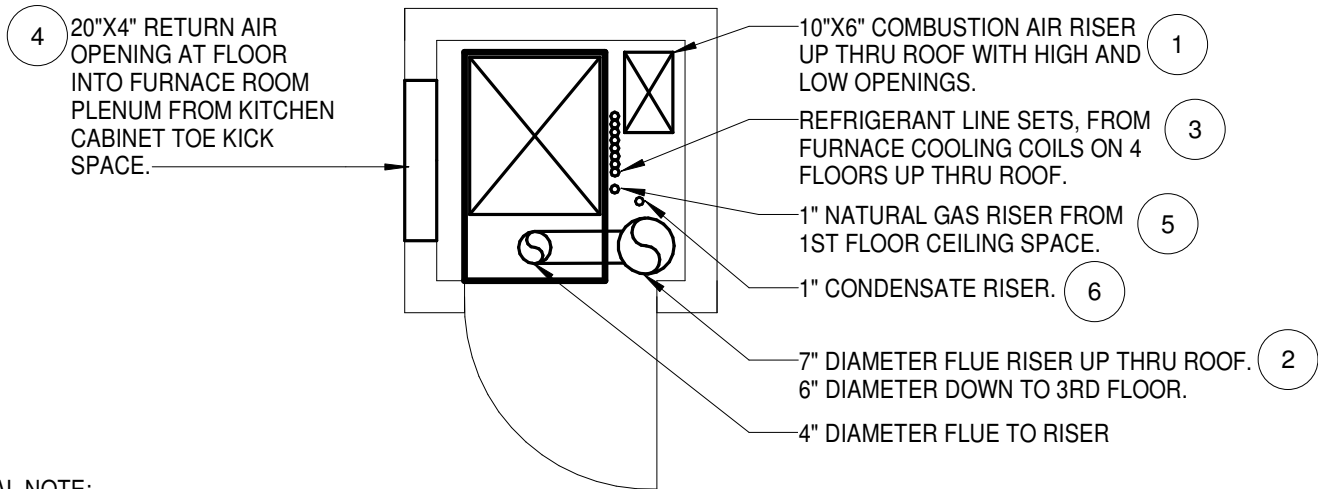
DRAWN: MAK

SCALE: 1/2" = 1'-0"

SHEET NO: SDM-01

SHEET TITLE: 4TH FLOOR EXISTING FURNACE CLOSET - DEMOLITION

REF: M4-01



GENERAL NOTE:

A. WITH PHASING THIS PROJECT FLOOR BY FLOOR AND STARTING ON THE TOP FLOOR, THIS DETAIL NOTES THE MECHANICAL INFRASTRUCTURE THAT NEEDS TO REMAIN AND TO BE COORDINATED IN THE STACKED FURNACE CLOSETS FOR FURNACES ON OTHER FLOORS TO REMAIN OPERATIONAL DURING CONSTRUCTION. THIS DOES NOT REPRESENT A TYPICAL FURNACE CLOSET ONLY TYPICAL COMPONENTS. CLOSET PLAN MAY BE MIRRORED FROM PLAN SHOWN. FIELD VERIFY LAYOUT OF EACH FURNACE CLOSET. 4TH FLOOR CLOSETS ARE TIGHTER ON SPACE THAN LOWER FLOORS, DUE TO LARGER COMBUSTION AIR DUCT AND REFRIGERANT LINE SETS FOR ALL 4 FLOORS Routed THRU CLOSET TO ROOF.

REFERENCE NOTES:

1. COMBUSTION AIR RISER SHALL REMAIN TO SERVE FURNACES ON LOWER FLOORS. PATCH HIGH AND LOW OPENINGS AIRTIGHT IN RISER ON FLOOR WHERE CONSTRUCTION IS TAKING PLACE TO PREVENT CONSTRUCTION DEBRIS AND DUST FROM ENTERING DUCT. COMBUSTION AIR RISER SHALL BE ABANDONED IN PLACE. ACCORDING TO EXISTING DOCUMENTS THERE ARE EXISTING FIRE DAMPERS AT EACH FLOOR PENETRATION. PATCH ROOF OPENING WATERTIGHT AND PATCH ANY FLOOR OPENINGS TO MATCH EXISTING. SEE ARCHITECTURAL PLANS FOR PATCHING REQUIREMENTS.
2. COMMON FLUE RISER SHALL REMAIN TO SERVE FURNACES ON LOWER FLOORS. PATCH 4" DIAMETER OPENING IN RISER WHEN FURNACE IS REMOVED. WHEN CONSTRUCTION ON ALL FLOORS IS COMPLETED, FLUE RISER SHALL BE COMPLETELY REMOVED. PATCH ROOF OPENING WATERTIGHT AND PATCH FLOOR OPENINGS TO MATCH EXISTING. SEE ARCHITECTURAL PLANS FOR PATCHING REQUIREMENTS. IF NECESSARY, TEMPORARILY REMOVE AND REINSTALL A SECTION OF EXISTING FLUE TO REMOVE OR INSTALL FURNACE IN CLOSET. COORDINATE INTERRUPTION IN FURNACE OPERATIONS ON LOWER FLOORS WITH OWNER PROVIDING REQUIRED NOTICE.
3. REFRIGERANT LINE SETS SERVING FURNACE COOLING COILS ON LOWER FLOORS SHALL REMAIN. CORRESPONDING REFRIGERANT LINE SET UP THRU ROOF SHALL BE REMOVED AS FURNACE, ASSOCIATED COOLING COIL AND ASSOCIATED CONDENSING UNIT ON ROOF ARE REMOVED. REUSE EXISTING OPENINGS THRU FLOOR(S) IF POSSIBLE TO RUN NEW REFRIGERANT LINE SETS. PATCH ANY UNUSED OPENINGS.
4. REUSE EXISTING RETURN AIR WALL OPENING FOR DUCTED RETURN AIR IF POSSIBLE. PATCH ANY UNUSED OPENING TO MATCH EXISTING. SEE ARCHITECTURAL PLANS FOR PATCHING REQUIREMENTS.
5. GAS RISER LOCATION SHOWN IS APPROXIMATE AND MAY NOT BE CONSISTENT IN ALL FURNACE CLOSETS. FIELD VERIFY GAS RISER LOCATION. IF NECESSARY FOR FURNACE REMOVAL, DISCONNECT AND RELOCATE GAS RISER OR BRANCH PIPING. GAS RISER SERVES FURNACES ON ALL FOUR FLOORS. FURNACES ON OTHER FLOORS SHALL REMAIN OPERATIONAL DURING CONSTRUCTION. PLAN AND COORDINATE ANY INTERRUPTION IN NATURAL GAS SERVICE WITHIN REQUIRED TIME FRAME WITH OWNER.
6. CONDENSATE RISER LOCATION SHOWN IS APPROXIMATE AND MAY NOT BE CONSISTENT IN ALL FURNACE CLOSETS. FIELD VERIFY LOCATION. CONDENSATE RISER SHALL REMAIN FUNCTIONAL FOR FURNACES ON OTHER FLOORS DURING CONSTRUCTION. COORDINATE ANY MODIFICATIONS OR INTERRUPTIONS TO CONDENSATE ROUTING THAT AFFECTS OTHER FLOORS WITH OWNER WITHIN REQUIRED TIME FRAME.

SUPPLEMENTAL DRAWING

DATE: 02/04/14

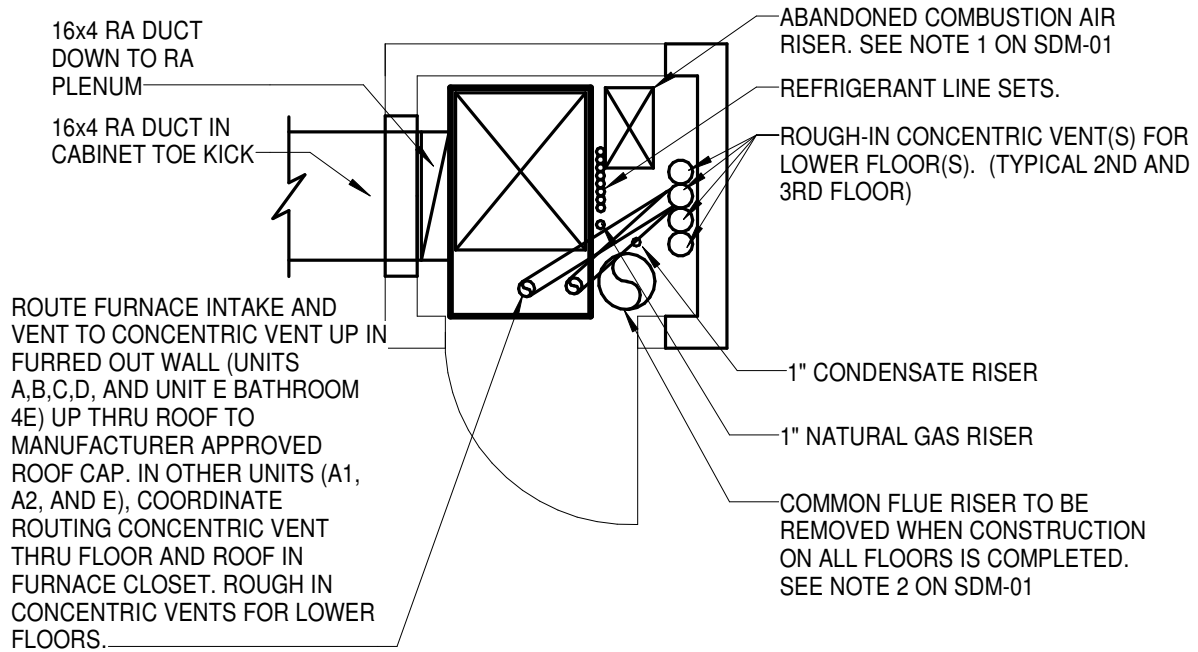
DRAWN: HPT

SCALE: 1/2" = 1'-0"

SHEET NO: SDM-02

SHEET TITLE: 4TH FLOOR FURNACE CLOSET - REMODELED

REF: M4-01



GENERAL NOTE:

- A. THIS DETAIL DOES NOT REPRESENT A TYPICAL FURNACE CLOSET, ONLY TYPICAL MECHANICAL COMPONENTS. FIELD VERIFY LAYOUT OF EACH FURNACE CLOSET. 4TH FLOOR CLOSETS ARE TYPICALLY TIGHTER ON SPACE THAN LOWER FLOORS DUE TO EXISTING COMBUSTION AIR DUCT, REFRIGERANT LINE SETS FOR 4 FURNACE SYSTEMS ON 4 FLOORS, AND VENTING FOR 4 FURNACES. MODIFICATIONS TO EXISTING ITEMS IN FURNACE CLOSETS MAYBE NECESSARY FOR INSTALLATION OF FURNACE SYSTEMS WITH PHASING OF PROJECT. COORDINATE ANY INTERRUPTION TO FURNACE SYSTEM OPERATIONS ON OTHER FLOORS WITH OWNER.

4

4TH FLOOR FURNACE CLOSET - REMODELED

SCALE: 1/2" = 1'-0"

SUPPLEMENTAL DRAWING

DATE: 02/04/14

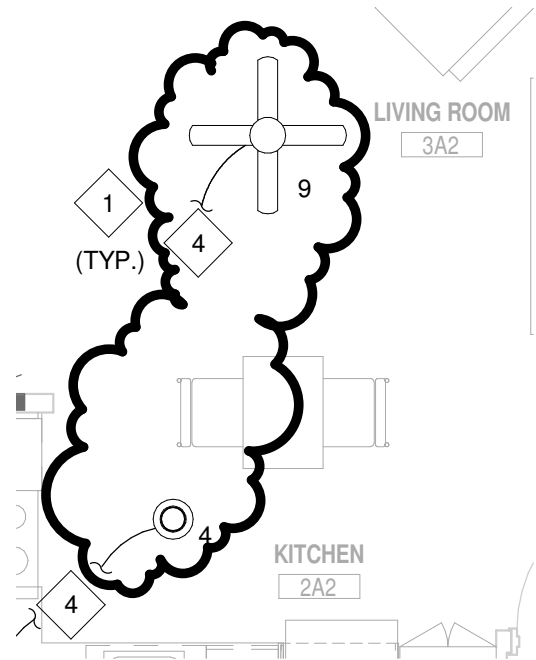
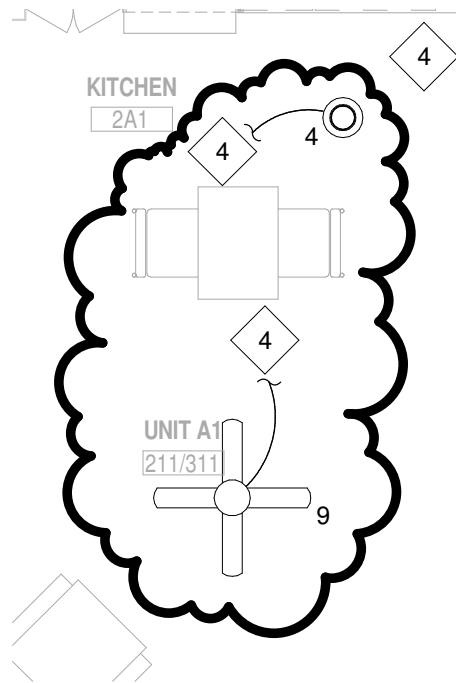
DRAWN: KJS

SCALE: 1/4" = 1'-0"

SHEET NO: SDE-1

SHEET TITLE: ADDENDUM NO. 1

REF: E1-05



1

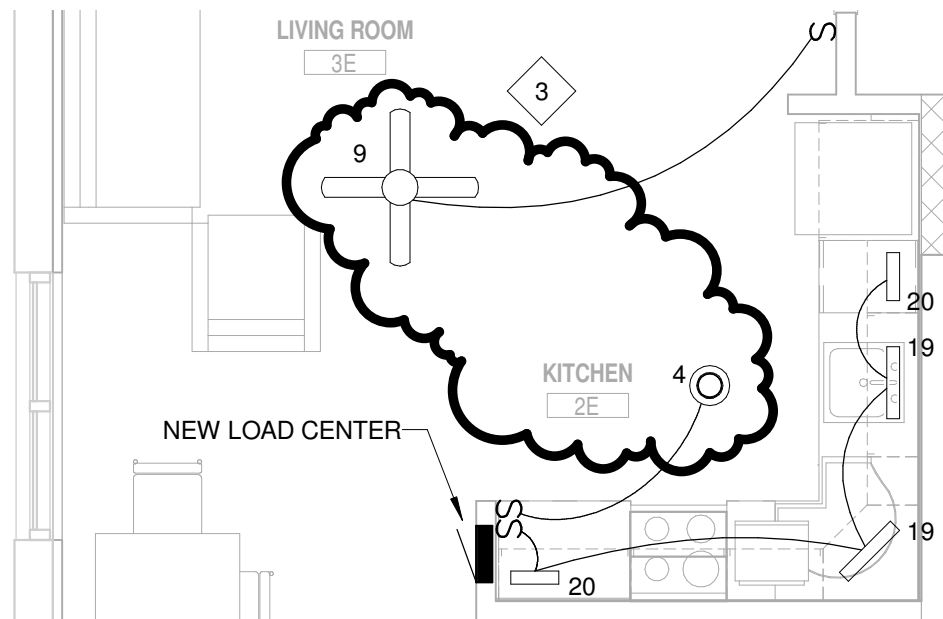
UNIT A1 - LIGHTING

SCALE: 1/4" = 1'-0"

2

UNIT A2 - LIGHTING

SCALE: 1/4" = 1'-0"



3

UNIT E - LIGHTING

SCALE: 1/4" = 1'-0"

SUPPLEMENTAL DRAWING

DATE: 02/04/14

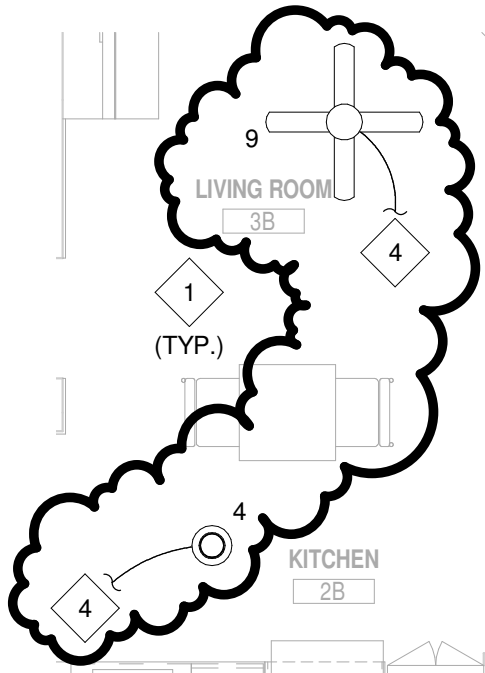
DRAWN: KJS

SCALE: 1/4" = 1'-0"

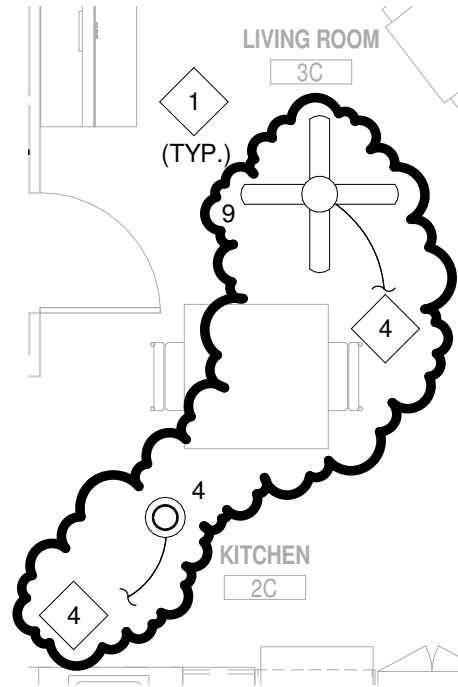
SHEET NO: SDE-2

SHEET TITLE: ADDENDUM NO. 1

REF: E1-05



1 UNIT B - LIGHTING
SCALE: 1/4" = 1'-0"



2 UNIT C - LIGHTING
SCALE: 1/4" = 1'-0"

SUPPLEMENTAL DRAWING

DATE: 02/04/14

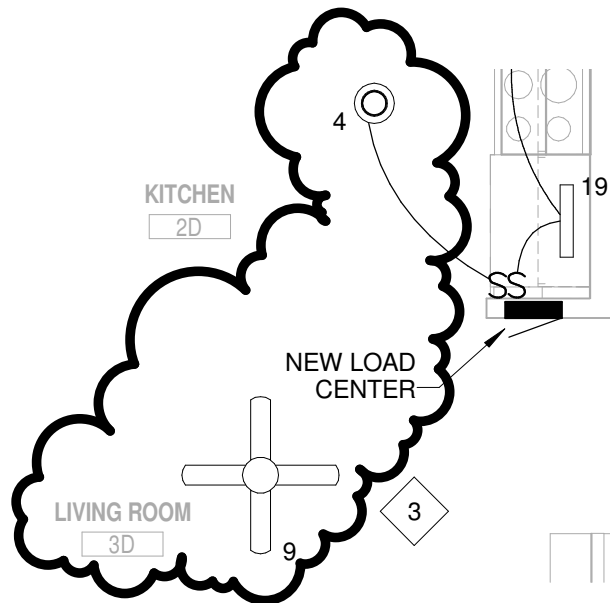
DRAWN: KJS

SCALE: 1/4" = 1'-0"

SHEET NO: SDE-3

SHEET TITLE: ADDENDUM NO. 1

REF: E1-05



1 UNIT D - LIGHTING
SCALE: 1/4" = 1'-0"

REFERENCED ELECTRICAL NOTES (X):

1. UNLESS OTHERWISE NOTED, INSTALL LIGHTING IN PLACE OF LUMINAIRES REMOVED IN DEMOLITION, AND CONNECT TO CIRCUIT PREVIOUSLY SERVING LIGHTING.
2. PROVIDE NEW SWITCH IN EXISTING WALL AND CONNECT TO LIGHT INDICATED.
3. CONNECT LIGHTING TO CIRCUIT 1 IN NEW LOAD CENTER, TYPICAL ENTIRE UNIT. VERIFY LOCATION OF LUMINAIRES WITH OWNER PRIOR TO ROUGH-IN.
4. CONNECT NEW LUMINAIRES TO LIGHTING CIRCUIT SERVING UNIT. VERIFY LOCATION OF LUMINAIRES WITH OWNER PRIOR TO ROUGH-IN.