



ADDENDUM NO. 1 FINAL CD DRAWINGS

Page 1 of 13

Project: Johnson Brock Public Schools

Project No.: L13386

Location: Johnson, Nebraska

Date: January 31, 2014

This Addendum is issued by the Architect to all bidders of record prior to receipt of proposals. Bidders shall acknowledge receipt of this addendum by so indicating on the Proposal Form. Failure to do so may subject Bidder to disqualification.

All information and instructions given herein shall become a part of the Contract Documents.

1.01 PROJECT MANUAL – SCOPES OF WORK

A. GENERAL PROVISIONS

1. Add note 17. "Any potential bidder not meeting the bidding requirements, specifically acquiring a bid bond through a bonding agency need to contact Hausmann Construction immediately. At that time we will discuss previous projects and any references to ensure qualified bidders. If Hausmann determines a bidder as qualified, your bid will need to be submitted to our office via in person, fax, mail, or email by February 6th @ 10:00 AM."

B. SCOPE #1 – SITE CLEARING AND EARTHWORK

1. Add note 17. "The CM will be responsible for all the associated fees and costs to execute the SWPPP permit. Scope #1 (Site Clearing and Earthwork) will be responsible for the maintenance of the best management practices (BMPs) according to the NRD. A current SWPPP Report will be on-site, and weekly inspections will be done by the CM. It is then the responsibility of Scope #1 to make corrections from that inspection within a 5 day period."

C. SCOPE #8 – DEMOLITION

1. Add note 13. "Work is to include grinding, patching and repair of existing concrete floor and terrazzo floor and integral base after demolition to receive new floor finishes. See Floor Finish Note 1 and 4 on Sheet A9.2. A coordination meeting is expected with the fluid-applied flooring sub to ensure the grinding meets their requirements prior to them starting."

D. GENERAL NOTE:

1. All cap flashing, window flashing at nichia panels, and base flashing under nichia panels to be installed under roofing scope.

1.02 DRAWINGS – ARCHITECTURAL

A. Sheet A1.1 – FIRST FLOOR PLAN

1. Vestibule 100 frame type A7 is incorrect revise to be A5.

B. Sheet A5.1 - WALL SECTIONS

1. Revise curtain wall glass location to exterior – see attached details A, B, C, and D.

C. Sheet 6.2 – SECTION DETAILS

1. See attached "A" for revised detail K9 at stair angle detail.

D. Sheet 7.1 – DOOR AND FRAME TYPES, PARTITION, ROOM FINISH SCHEDULE

1. Attached A7.1 replaces previously in its entirety.

E. Sheet A1.3 – ROOF PLAN

1. See attached new detail for section through chimney that is being demolished down to 4'-0" above top of existing parapet.

1.03 GENERAL - MECHANICAL

- A. General – The following manufactures have been approved for the listed items. All items shall meet the requirements of the construction documents, specifications and are subject for review during shop drawing submittal:

Specification Section	Manufacturer
a. 233113 Metal Ducts	Seiho (D-2 diffuser)
b. 233113 Metal Ducts	Spiral Pipe Of Texas (Spiral ducts)

1.04 DRAWINGS – MECHANICAL

A. Sheet M0.1 FIRST FLOOR PLAN – MECHANICAL DEMOLITION.

1. RR 112, Existing HWS/R piping passing through the restroom serving the second floor shall remain in place. Coordinate with new work.
2. Existing wall hydrant on north face of 1936 building shall be removed and piping capped back at main.
3. Existing wall hydrant on north face of 1936 building shall be removed and piping capped back at main.

B. Sheet M1.1 – LOWER LEVEL PLAN – HVAC

1. Add to flag note 12: Locate combustion air fan in a position that will prohibit the freezing of any piping in the boiler room.

1.04 DRAWINGS – ELECTRICAL

A. Sheet E0.1 FLOOR PLAN – ELECTRICAL DEMOLITION.

1. Additional fixtures and devices to be removed in demolition have been indicated in RR 112, for clarification. Reference sketch E0.1a.
2. Removal of existing conduits has been indicated. Reference sketch E0.1a.
3. Add to flag note 12: Locate combustion air fan in a position that will prohibit the freezing of any piping in the boiler room.

B. Sheet E2.1 FLOOR PLAN – POWER

1. Clarified data requirements for floor boxes in Library/Media 105 and for all wall mounted data outlets and wireless access points in remodel. Reference sketch E2.1a.
2. Plans are now showing the intercepting and extending of conduits and feeders modified during demolition. Reference sketch E2.1b.
3. Flag notes and telecommunication specific flag notes have been added to clarify the changes listed in items a and b above. Reference sketch E2.1c.

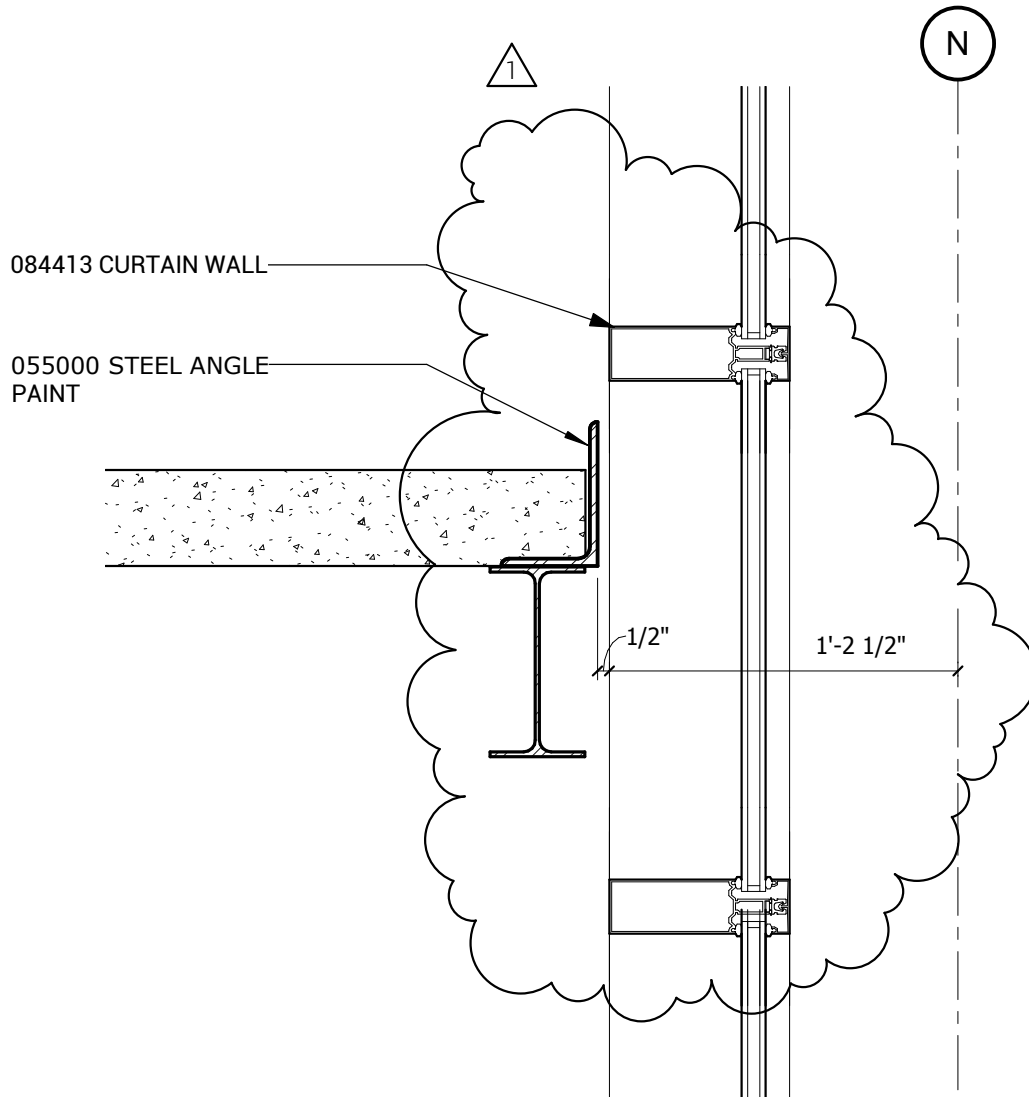
END OF ADDENDUM 1



JOHNSON BROCK PUBLIC SCHOOLS ADDITION

ASI NO.:
 ADDENDUM NO.: 1
 CHANGE PROPOSAL REQUEST NO.:
 R.F.I REQUEST NO.:
PROJECT: L13386
DATE: 2014 JANUARY 16
ISSUE DATE: 2014 JANUARY 31

SECTION DETAIL ATTACHMENT A



K9 SECTION DETAIL 3B
SCALE: 1 1/2" = 1'-0"

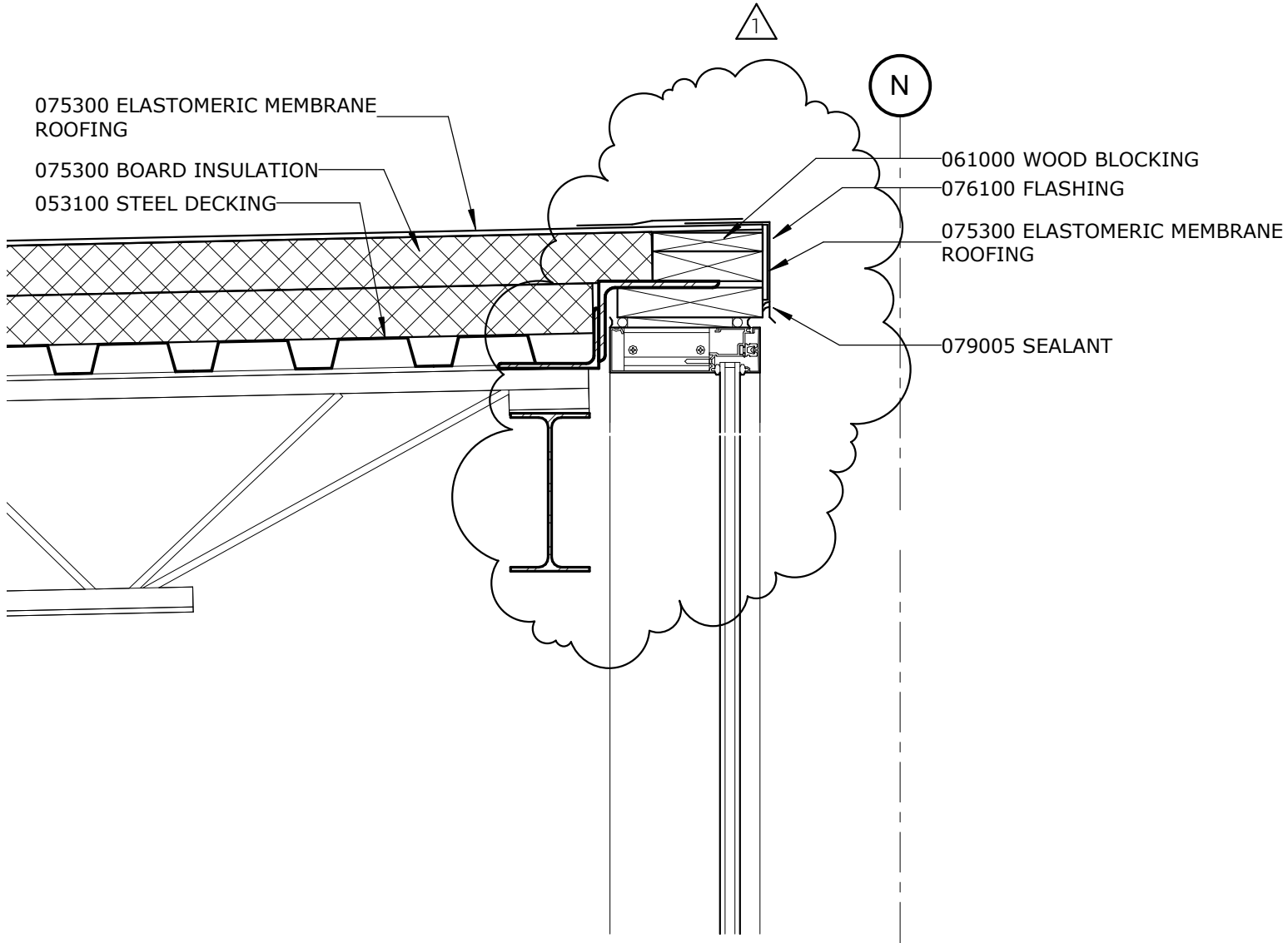
SHEET A6.2



JOHNSON BROCK PUBLIC SCHOOLS ADDITION

ASI NO.:
 ADDENDUM NO.:
 CHANGE PROPOSAL REQUEST NO.:
 R.F.I REQUEST NO.:
 PROJECT: L13386
 DATE: 2014 JANUARY 16
 ISSUE DATE: 2014 JANUARY 31

SECTION DETAIL ATTACHMENT B



P9 SECTION DETAIL 3C

SCALE: 1 1/2" = 1'-0"

SHEET A6.2

BAHR VERMEER HAECKER ARCHITECTS

440 N 8TH ST STE 100
bvh.com

LINCOLN NE 68508

V 402 475 4551 F 402 475 0226

C:\Revit Projects\L13386jbs\L13386dhaniganLAPTOP.rvt

© Copyright 2010 Bahr Vermeer Haecker Architects, LTD



JOHNSON BROCK PUBLIC SCHOOLS ADDITION

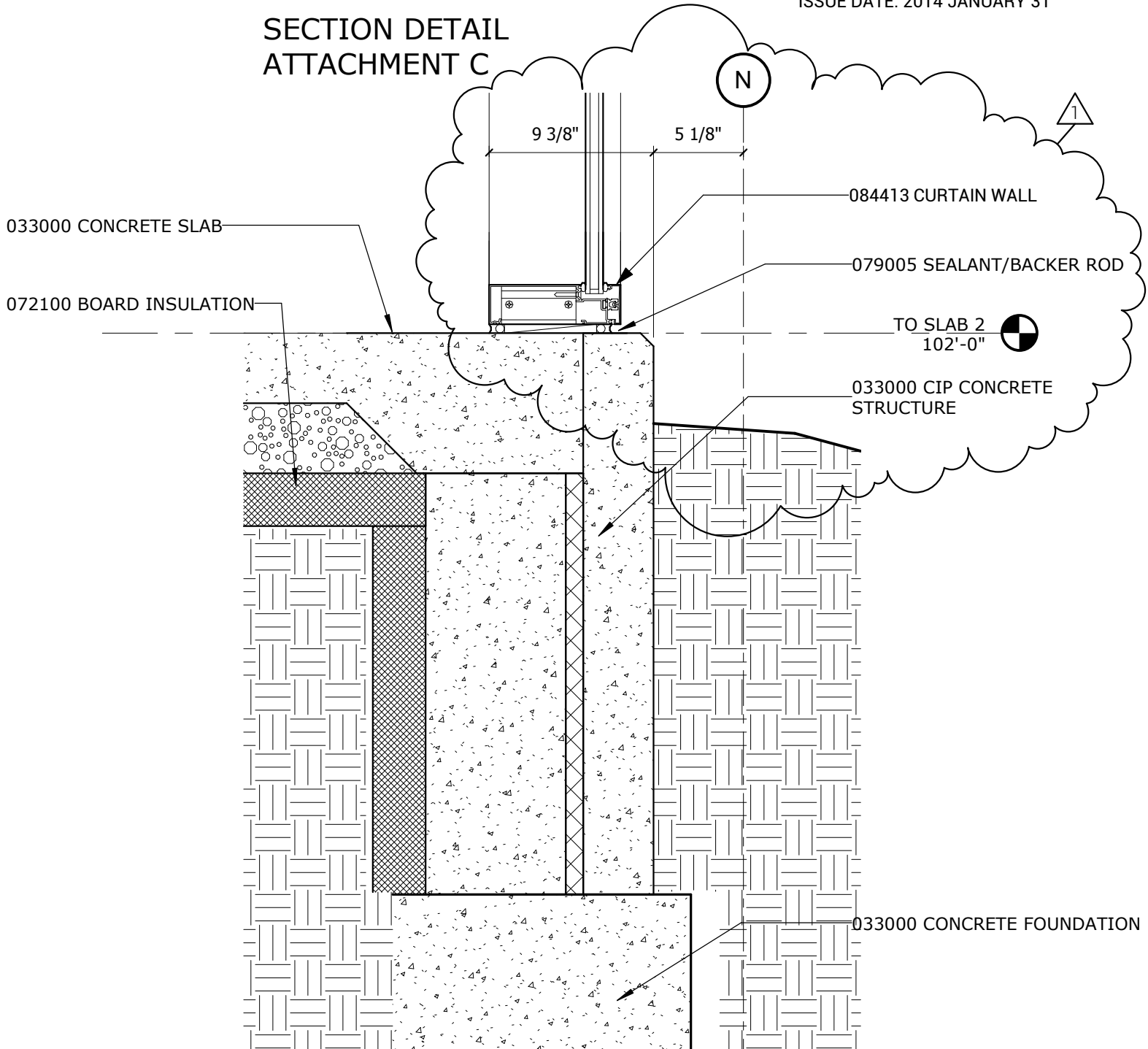
- ASI NO.:
- ADDENDUM NO.:
- CHANGE PROPOSAL REQUEST NO.:
- R.F.I REQUEST NO.:

PROJECT: L13386

DATE: 2014 JANUARY 16

ISSUE DATE: 2014 JANUARY 31

SECTION DETAIL ATTACHMENT C



A9 SECTION DETAIL 3A

SCALE: 1 1/2" = 1'-0"

SHEET A6.2

BAHR VERMEER HAECKER ARCHITECTS

440 N 8TH ST STE 100
bvh.com

LINCOLN NE 68508

V 402 475 4551

F 402 475 0226

C:\Revit Projects\L13386jbs\L13386dhaniganLAPTOP.rvt

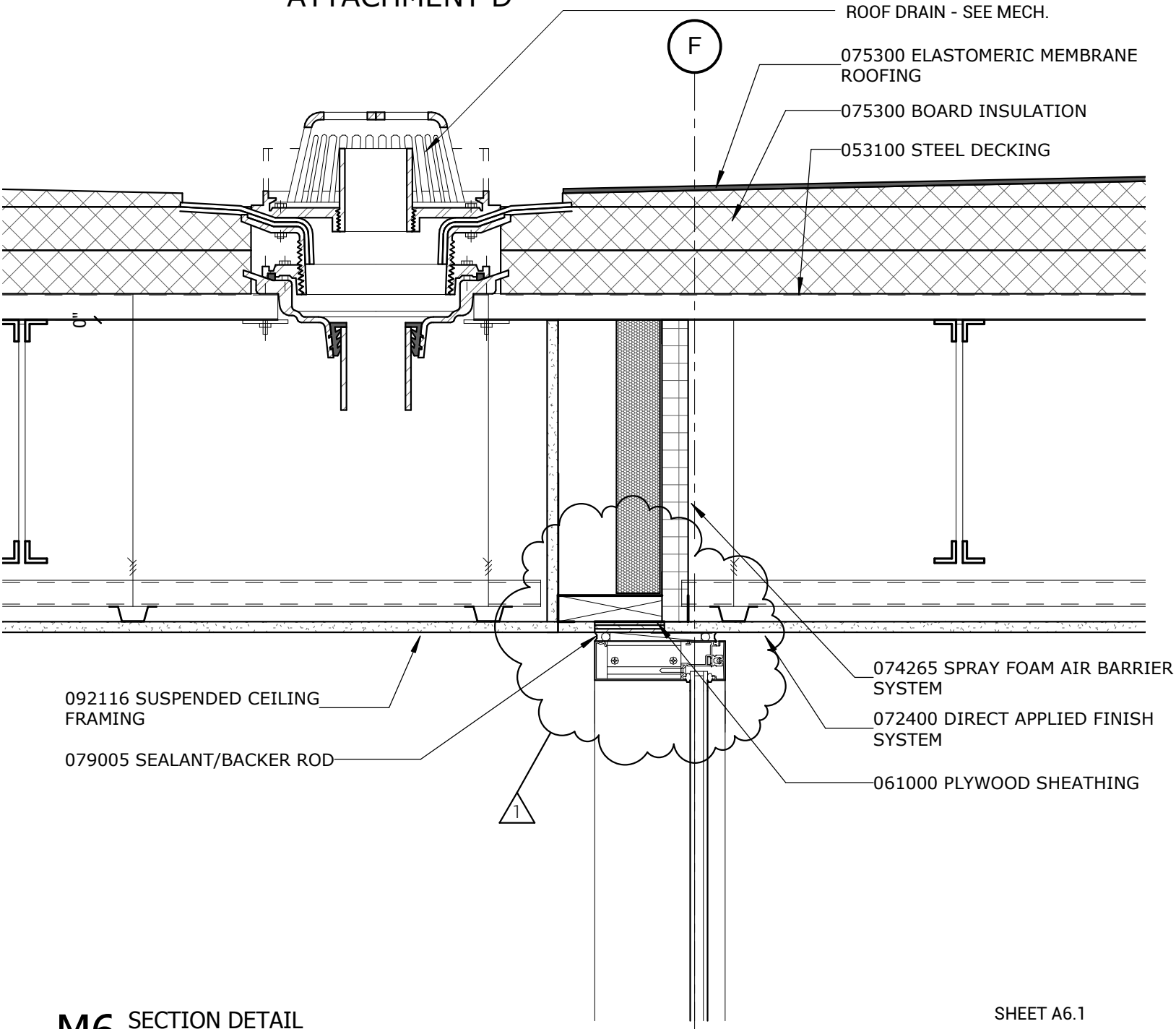
© Copyright 2010 Bahr Vermeer Haecker Architects, LTD



JOHNSON BROCK PUBLIC SCHOOLS ADDITION

ASI NO.:
 ADDENDUM NO.:
 CHANGE PROPOSAL REQUEST NO.:
 R.F.I REQUEST NO.:
 PROJECT: L13386
 DATE: 2014 JANUARY 16
 ISSUE DATE: 2014 JANUARY 31

SECTION DETAIL ATTACHMENT D



M6 SECTION DETAIL

SCALE: 1 1/2" = 1'-0"

SHEET A6.1

BAHR VERMEER HAECKER ARCHITECTS

440 N 8TH ST STE 100
bvh.com

LINCOLN NE 68508

V 402 475 4551

F 402 475 0226

C:\Revit Projects\L13386jbs\L13386dhaniganLAPTOP.rvt

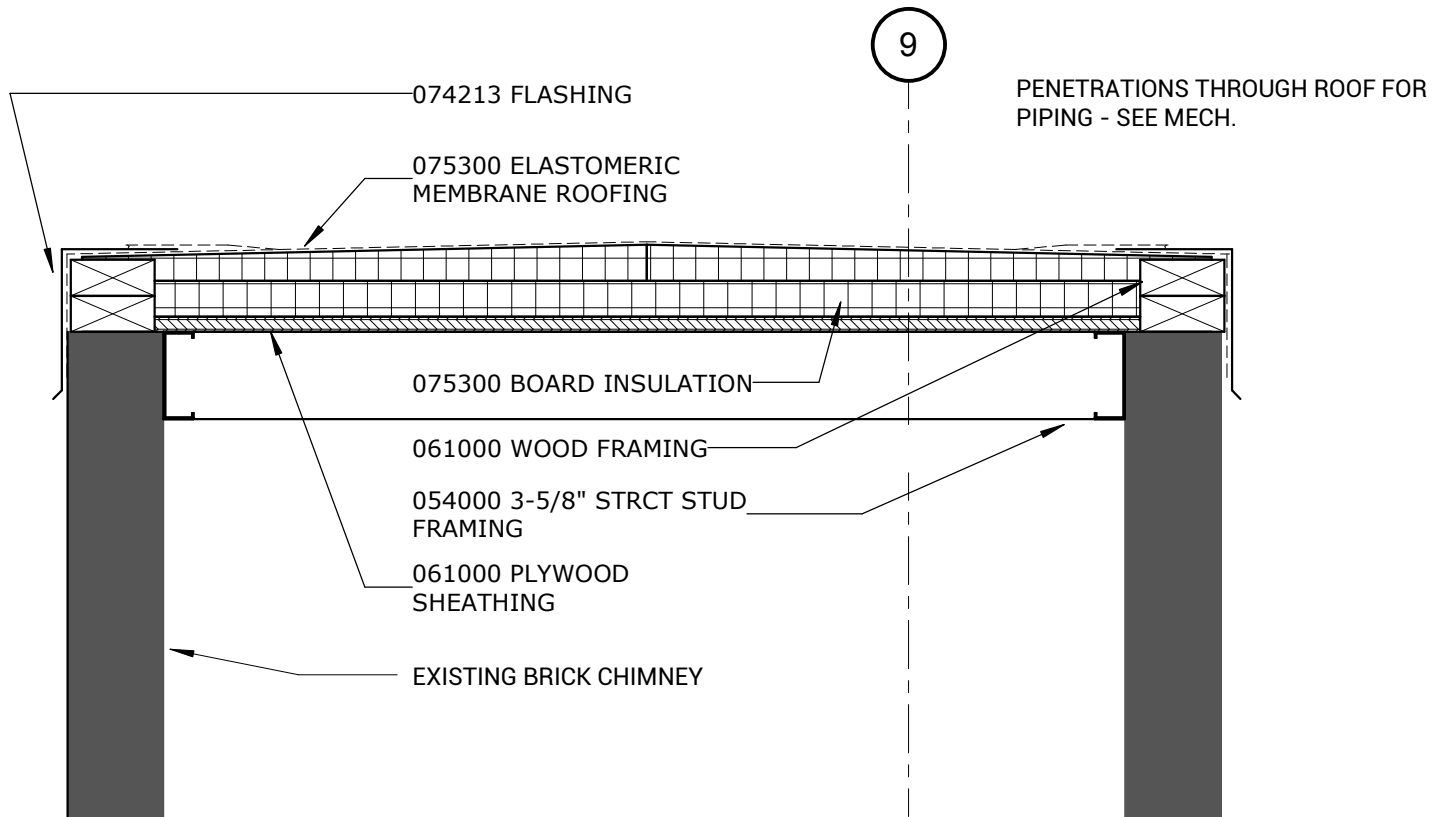
© Copyright 2010 Bahr Vermeer Haecker Architects, LTD



JOHNSON BROCK PUBLIC SCHOOLS ADDITION

ASI NO.:
 ADDENDUM NO.: 1
 CHANGE PROPOSAL REQUEST NO.:
 R.F.I REQUEST NO.:
 PROJECT: L13386
 DATE: 2014 JANUARY 16
 ISSUE DATE: 2014 JANUARY 31

SECTION DETAIL ATTACHEMENT E



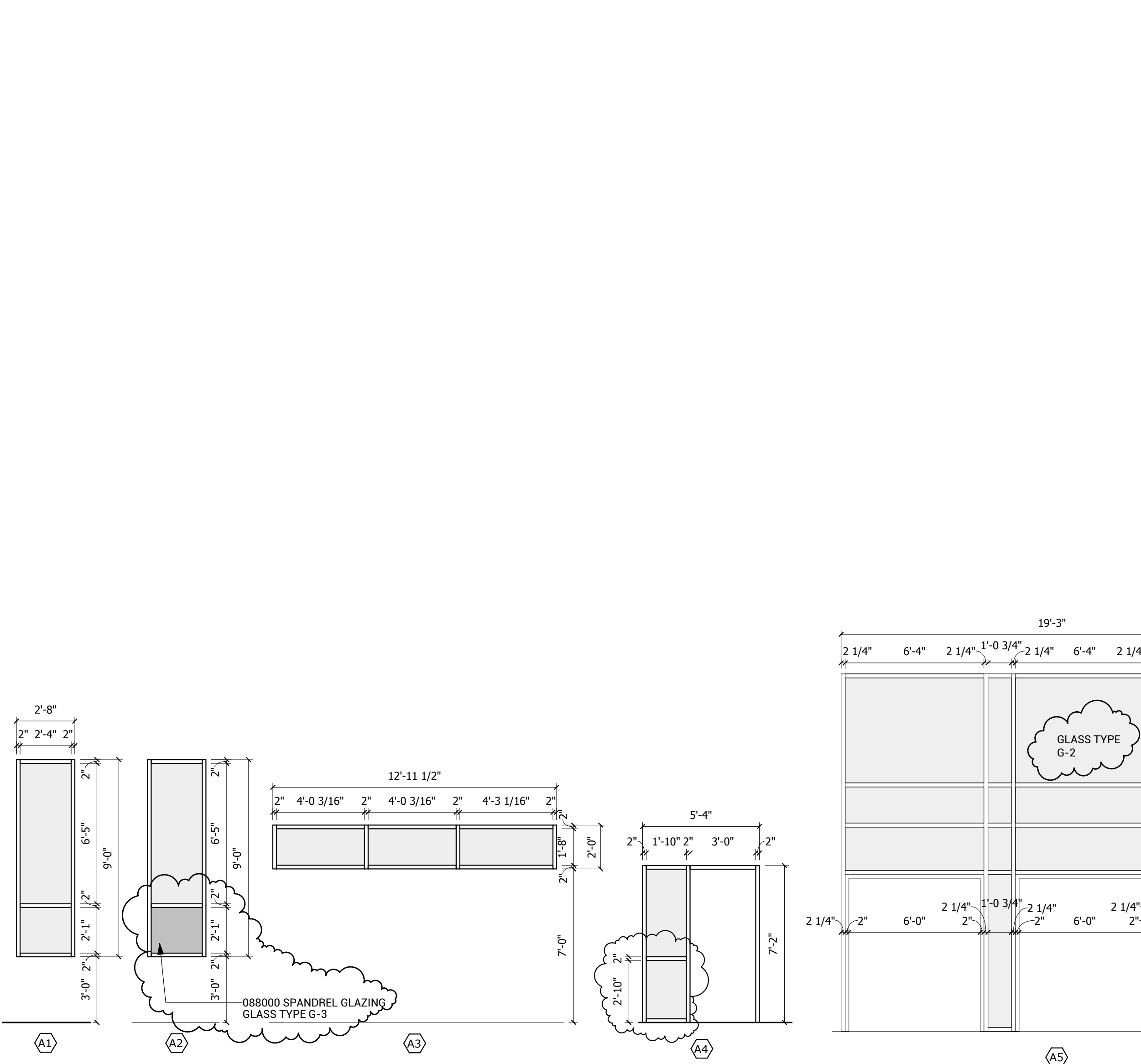
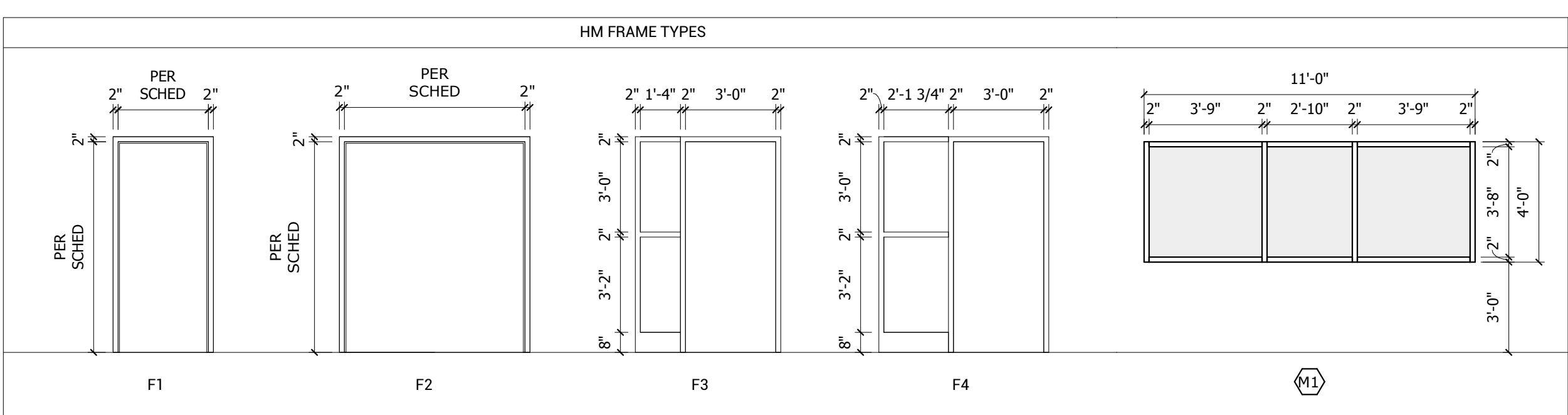
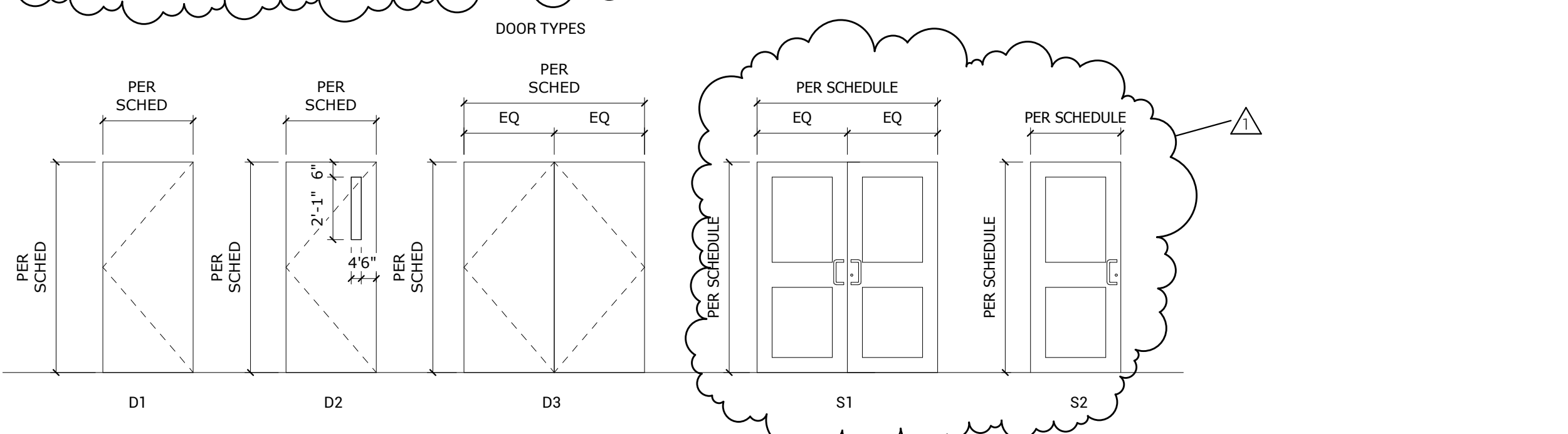
1 SECTION DETAIL - AT EXISTING CHIMNEY

NEW DETAIL

DOOR SCHEDULE														
DOOR NO.	ROOM	ROOM NO.	WIDTH	HEIGHT	FRAME TYPE	MATERIAL	FINISH	TYPE	DOOR MATERIAL	FINISH	HW SET	FIRE RATING	DETAIL	COMMENTS
003E	MECH STAIR	003E	3'-0"	7'-0"	F1	HM	PT-	D1	WD	PFIN	1			
009	WEIGHT ROOM	001E	3'-0"	7'-0"	F1	HM	PT-	D1	WD	PFIN	1	45MIN		
100A	VESTIBULE	100	3'-0"	7'-0"	--	ALUM	PFIN	S2	ALUM	PFIN	2			
100B	VESTIBULE	100	6'-0"	7'-0"	--	ALUM	PFIN	S1	ALUM	PFIN	3			
100C	VESTIBULE	100	6'-0"	7'-0"	--	ALUM	PFIN	S1	ALUM	PFIN	3			
100D	COMMONS	101	3'-0"	7'-0"	--	ALUM	PFIN	S2	ALUM	PFIN	4			
100E	COMMONS	101	6'-0"	7'-0"	--	ALUM	PFIN	S1	ALUM	PFIN	5			
100F	COMMONS	101	6'-0"	7'-0"	--	ALUM	PFIN	S1	ALUM	PFIN	5			
102	HALL	109	6'-0"	7'-0"	F2	HM	PT-	D3	WD	PFIN	6			
103	STORAGE	103	6'-0"	7'-0"	F2	HM	PT-	D3	WD	PFIN	7	45MIN		
104	TITLE	104	3'-4"	7'-0"	F3	HM	PT-	D1	WD	PFIN	8			
104A	COMMONS	101	3'-4"	7'-0"	F4	HM	PT-	D1	WD	PFIN	9			
105B	HALL	109	3'-4"	7'-0"	F3	HM	PT-	D1	WD	PFIN	9			
106A	NURSE	106	3'-0"	7'-0"	F1	HM	PT-	D2	WD	PFIN	8	45MIN		
106B	RR	106A	3'-0"	7'-0"	F1	HM	PT-	D1	WD	PFIN	10			
107A	SCIENCE	107	3'-0"	7'-0"	F1	HM	PT-	D2	WD	PFIN	11	45MIN		
107B	SCIENCE	107	3'-0"	7'-0"	F1	HM	PT-	D1	WD	PFIN	11	45MIN		
108	SCIENCE STORAGE	108	3'-0"	7'-0"	F1	HM	PT-	D1	WD	PFIN	12			
109	HALL	109	3'-0"	7'-0"	--	ALUM	PFIN	S2	ALUM	PFIN	13			
110A	STAIR	110	3'-0"	7'-0"	--	ALUM	PFIN	S2	ALUM	PFIN	13			
110B	CORRIDOR	111	6'-0"	7'-0"	F2	HM	PT-	D3	WD	PFIN	6	45MIN		
111A	CORRIDOR	111	6'-0"	7'-0"	F2	HM	PT-	D3	WD	PFIN	14	90MIN		
111B	CORRIDOR	111	3'-0"	7'-0"	F1	HM	PT-	D1	WD	PFIN	15	45MIN		
111C	CORRIDOR	113	3'-0"	7'-0"	F1	HM	PT-	D1	WD	PFIN	16			
111D	CORRIDOR	113	3'-0"	7'-0"	F1	HM	PT-	D1	WD	PFIN	16	45MIN		
112	RR	112	3'-0"	7'-0"	F1	HM	PT-	D1	WD	PFIN	17			
200	EXISTING CLASSROOM	200	3'-0"	7'-0"	F1	HM	PT-	D1	WD	PFIN	18			
201	EXISTING CLASSROOM	201	3'-0"	7'-0"	F1	HM	PT-	D1	WD	PFIN	18			
202	EXISTING CLASSROOM	202	3'-0"	7'-0"	F1	HM	PT-	D1	WD	PFIN	18			
210	EXISTING CLASSROOM	200	3'-0"	7'-0"	F1	HM	PT-	D1	WD	PFIN	11	45MIN		

DOOR SCHEDULE NOTES:

- RELOCATE EXISTING VESTIBULE STOREFRONT DOORS.
- NEW DOOR TYPE TO MATCH EXISTING DOORS TO BE RELOCATED - FIELD VERIFY STYLE SIZES

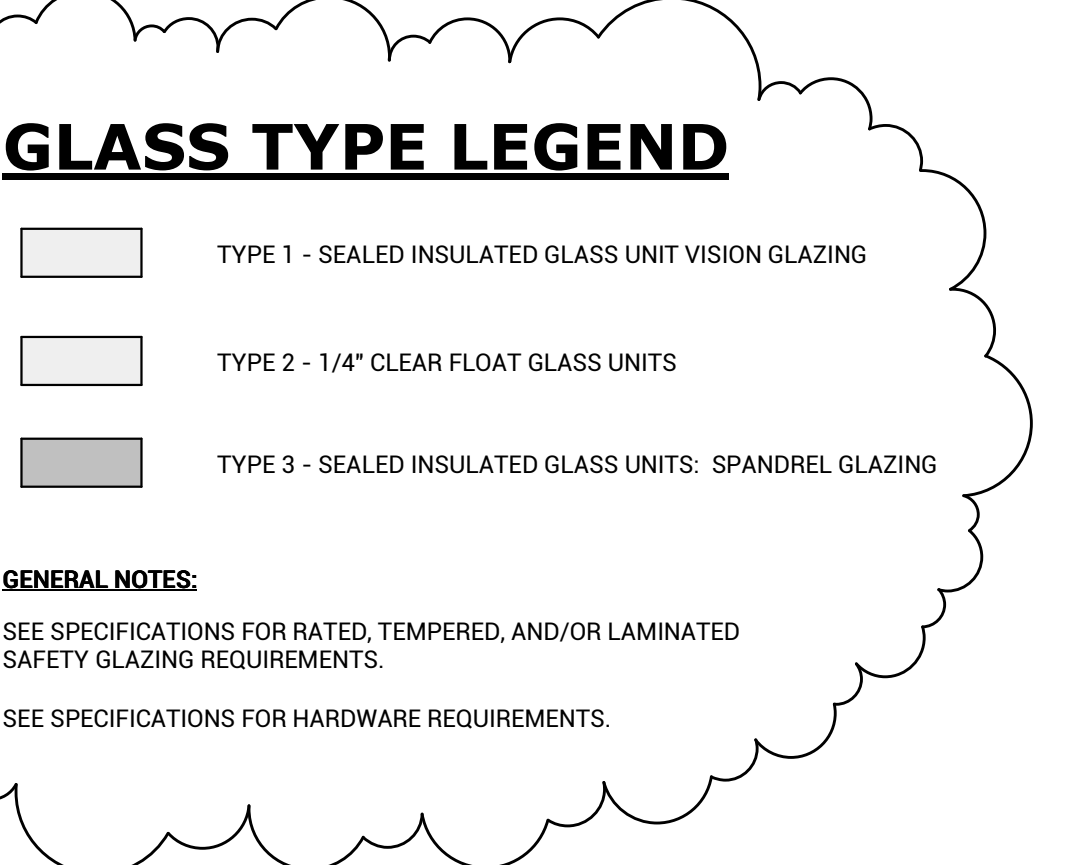


A1 ALUMINUM STOREFRONT FRAME TYPES
SCALE: 1/4" = 1'-0"

ROOM FINISH SCHEDULE													
ROOM NUMBER	ROOM NAME	FLOOR FINISH	BASE FINISH	MATERIAL NORTH	FINISH NORTH	MATERIAL SOUTH	FINISH SOUTH	MATERIAL EAST	FINISH EAST	MATERIAL WEST	FINISH WEST	CEILING FINISH	COMMENTS
100	VESTIBULE	WOC-1	RB-1	EXG/GWB	P-2	EXG	---	GLASS	---	GLASS	---	GWBP-1	1
101	COMMONS	PC	RB-1	EXG/GWB	P-2	EXG	---	GLASS	---	GLASS	---	ACT-1	1
101E	EXISTING COMMONS	EXG	EXG	EXG/GWB	P-2	EXG	---	GLASS	---	GLASS	---	ACT-1	1
103	STORAGE	PC	RB-1	GWB	P-2	GWB	---	GWB	---	GWB	---	ACT-1	1
104	TITLE	CPT-2	RB-1	GWB	P-3	GWB	---	GWB	---	GWB	---	ACT-1	4
105	LIBRARY / MEDIA	CPT-2	RB-1	GWB	P-2	GWB	---	GWB	---	GWB	---	EXP/P-6	
106	NURSE	RF-1	RB-1	GWB	P-2	GWB	---	GWB	---	GWB	---	ACT-1	
106A	RR	CT-3	CT-3	GWB	CT-1/CT-2/EP-2	GWB	---	GWB	---	GWB	---	ACT-1	
107	SCIENCE	RF-1	RB-1	GWB	P-2	GWB	---	GWB	---	GWB	---	ACT-1	
108	SCIENCE STORAGE	RF-1	RB-1	GWB	P-2	GWB	---	GWB	---	GWB	---	ACT-1	
109	HALL	PC/CPT-1	RB-1	GWB	P-4	EXG/GWB	---	GWB	---	GWB	---	ACT-1/GWB	2
110	STAIR	PC	RB-1	GWB	P-2	EXG	---	GWB	---	GWB	---	EXP/P-6	
111	CORRIDOR	PC/CPT-1	RB-1	GWB	P-2/P-3	GWB	---	GWB	---	GWB	---	GWBP-1	
112	RR	PAP	EXG/CT-3	EXG	EP-2	GWB	---	GWB	---	GWB	---	CT-1/CT-2/EP-2	
113	CORRIDOR	---	---	GWB	MATCH EXG	---	---	---	---	---	---	---	
200	EXISTING CLASSROOM	---	---	---	---	---	---	---	---	---	---	---	3
201	EXISTING CLASSROOM	---	---	---	---	---	---	---	---	---	---	---	3
202	EXISTING CLASSROOM	---	---	---	---	---	---	---	---	---	---	---	3
203	EXISTING CLASSROOM	---	---	---	---	---	---	---	---	---	---	---	3
210	STAIR	PC	RB-1	GWB	PT-2	EXG	---	GWB	---	GWB	---	EXP/P-6	

ROOM FINISH SCHEDULE NOTES:

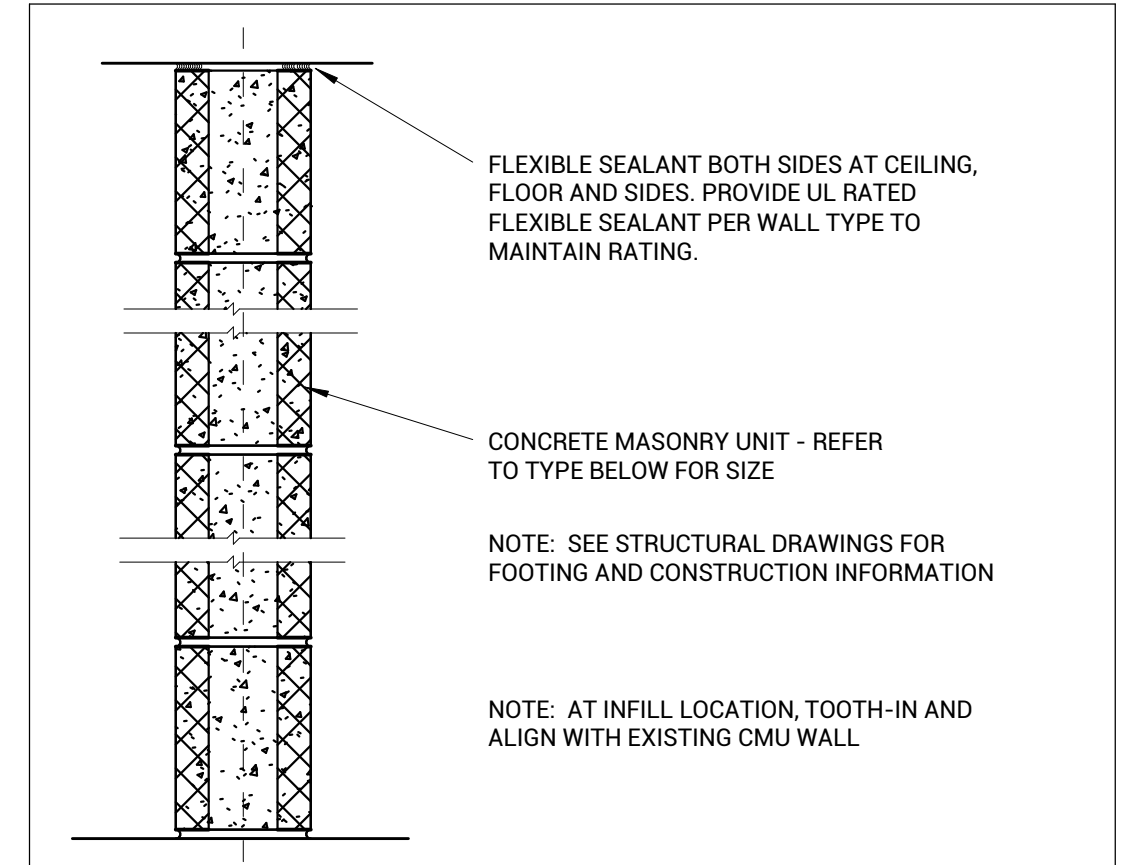
- EXISTING BRICK ON NORTH WALL TO REMAIN, EIFS ABOVE TO BE REMOVED AND REPLACED WITH GWB
- RAMP AND LANDING TO BE CPT-1
- NEW DOORS ONLY IN THESE ROOMS



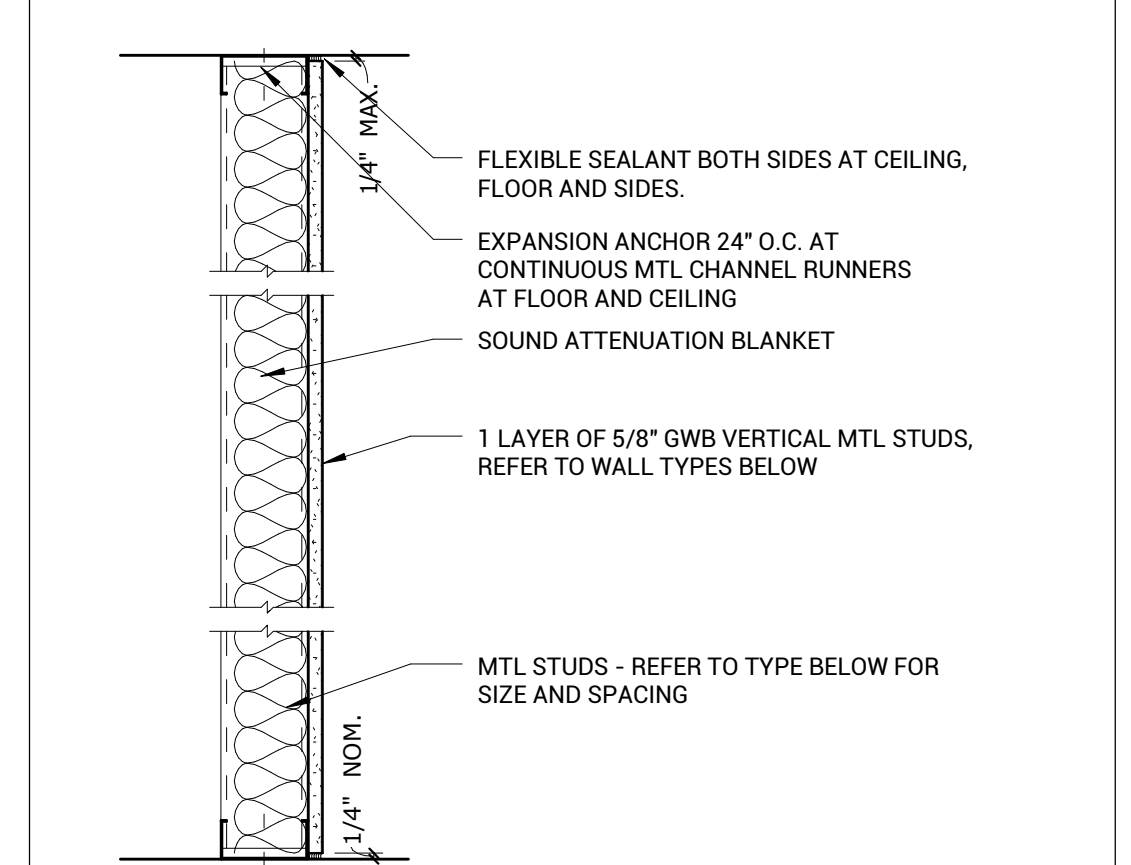
GENERAL NOTES:
SEE SPECIFICATIONS FOR RATED, TEMPERED, AND/OR LAMINATED SAFETY GLAZING REQUIREMENTS.
SEE SPECIFICATIONS FOR HARDWARE REQUIREMENTS.

FINISH MATERIALS DESIGNATIONS:

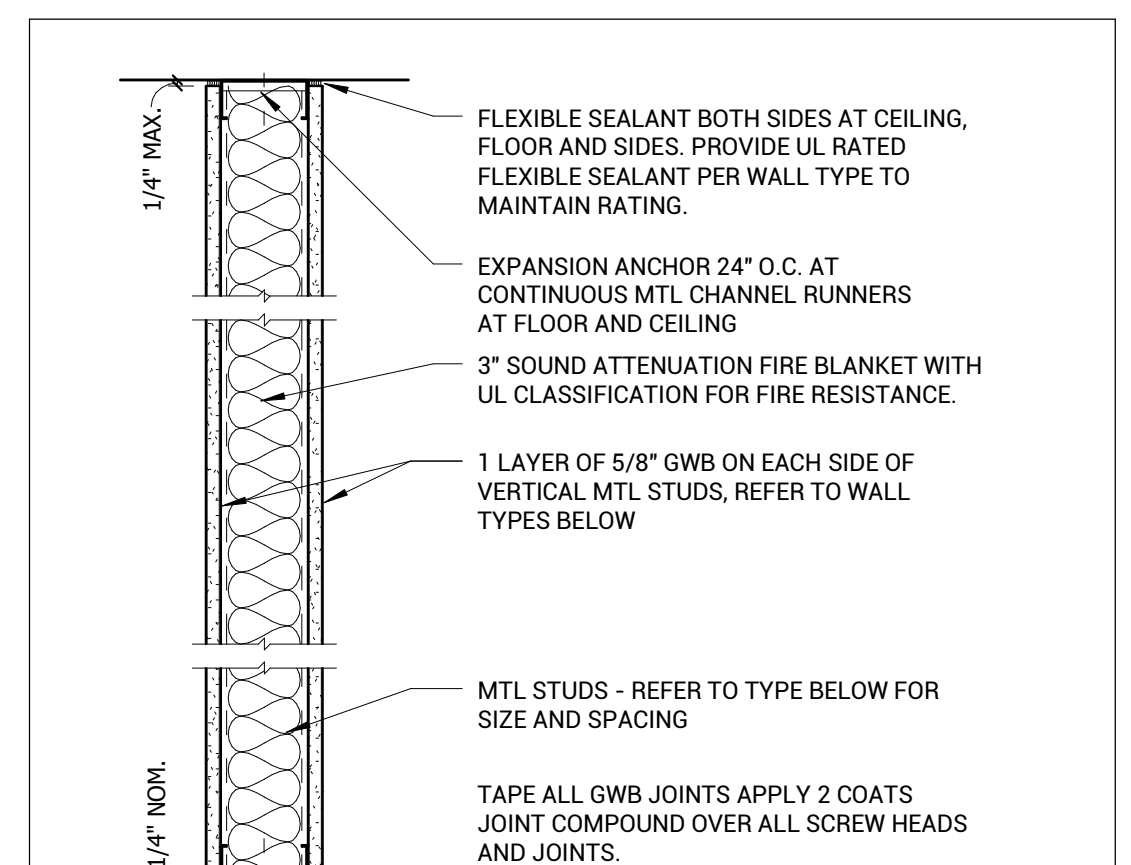
- CPT: Carpet
- WOC: Walk-Off Carpet Tile
- SC: Sealed Concrete
- ET: Thin Epoxy Terrazzo
- RB: Rubber BASE
- GWB: Gypsum Wallboard
- CMU: Concrete Masonry Unit
- P: Paint
- EP: Epoxy Paint
- CT: Ceramic Tile
- ACT: Acoustical Ceiling Tile
- EXP: Exposed Structure



TYPE	MASONRY PARTITION	WIDTH	FIRE RATING	TEST	STC
M3	6" CMU	5/8"	NR	--	--



TYPE	GYPSUM PARTITION	WIDTH	FIRE RATING	TEST	STC
F1	7/8" STUDS @ 16" O.C.	1 1/2"	NR	--	--
F2	2-1/2" STUDS @ 16" O.C.	3 1/8"	NR	--	--
F3	3-5/8" STUDS @ 16" O.C.	4 1/4"	NR	--	--



TYPE	GYPSUM PARTITION	WIDTH	FIRE RATING	TEST	STC
A1	3-5/8" STUDS @ 16" O.C.	4 7/8"	NR	--	49
A2	3-5/8" STUDS @ 16" O.C.	4 7/8"	1 HOUR	UL U419	49
A3	6" STUDS @ 16" O.C.	7 1/4"	NR	UL U419	49
A4	6" STUDS @ 16" O.C.	7 1/4"	1 HOUR	UL U419	49



ARCHITECT
BAHR VERMEER HAECKER ARCHITECTS
440 N 8TH ST STE 100
LINCOLN NE 68508
V 402 330 8860
F 402 475 0226
bvha.com

CIVIL ENGINEER
THOMPSON DRESSEN AND DORNER
10836 OLD MILL ROAD
OMAHA NE 68154
V 402 330 8860
F 402 491 3866
td2co.com

STRUCTURAL
LARGE STRUCTURAL GROUP LLC
3616 ROTONDIOLANE
LINCOLN NE 68516
V 402 421 5540
largestructuralgroup.com

MECHANICAL/ELECTRICAL
MORRISSEY ENGINEERING
4940 NO 118TH STREET
OMAHA NE 68154
V 402 491 4144
F 402 491 4146
morriseyengineering.com

REVISIONS SCHEDULE		
MARK	DATE	DESCRIPTION
1	1/31/14	Addendum #1

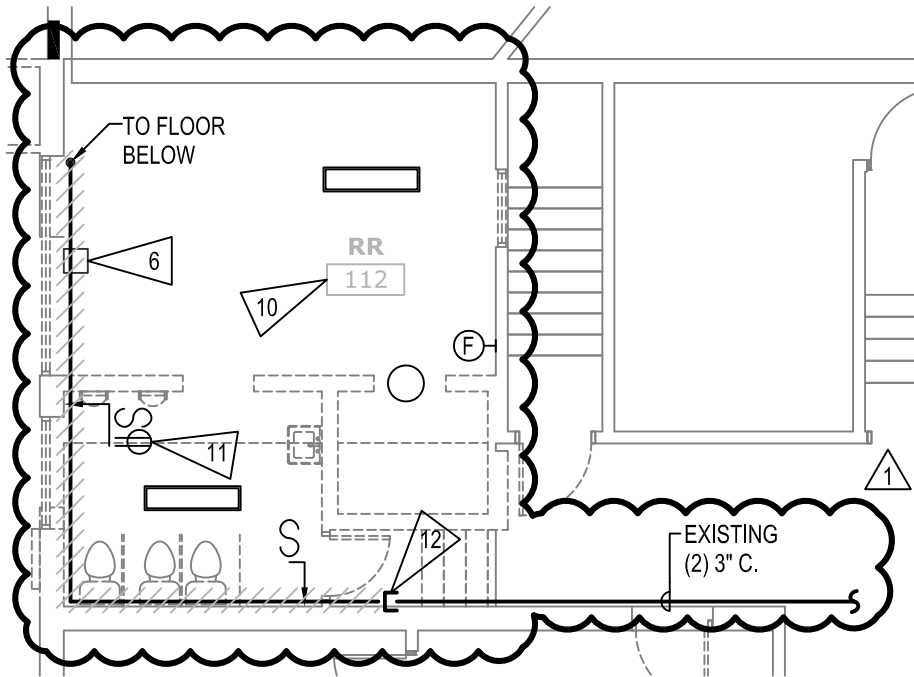
JOHNSON BROCK PUBLIC SCHOOLS ADDITION

PROJECT: L13386 DATE: 2014 JANUARY 16
ISSUE DATE: 2014 JANUARY 31



DOOR AND FRAME TYPES, PARTITION TYPES, ROOM FINISH SCHEDULE

A7.1R



A12 FIRST FLOOR PLAN - ELECTRICAL DEMOLITION
SCALE: 1/8" = 1'-0"

- 1
- 11 RECEPTACLE MOUNTED HIGH ON WALL.
 - 12 REMOVE PORTION OF EXISTING (2) 3" CONDUITS INDICATED HATCHED, FROM LOCATION INDICATED TO MECHANICAL ROOM PANEL LOCATED IN BASEMENT. FIELD COORDINATE PANEL LOCATION PRIOR TO DEMOLITION. PULL BACK EXISTING FEEDER CONDUCTORS AND PULL INTO NEW CONDUIT SERVING MECHANICAL ROOM. COORDINATE PANEL OUTAGE WITH OWNER PRIOR TO DEMOLITION. SEE SHEET E2.1 FOR ADDITIONAL INFORMATION. PATCH FLOOR PENETRATION TO MATCH EXISTING SURFACES.



mechanical | electrical | technology | commissioning

4940 North 118th Street
Omaha, NE 68164

P: 402.491.4144

www.morrisseyengineering.com

JOHNSON BROCK PUBLIC SCHOOLS ADDITION

project no.: 13222

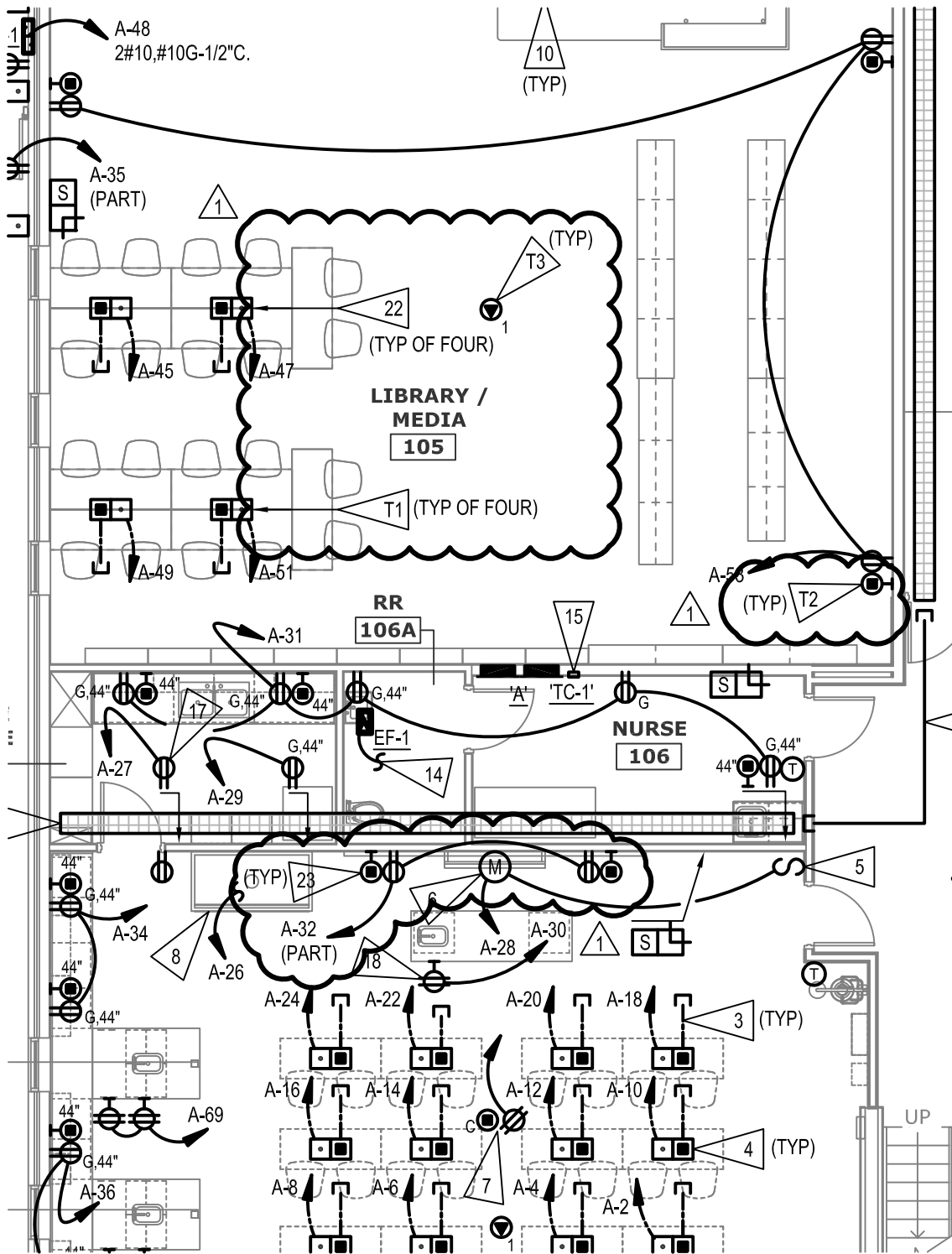
drawing referenced: E0.1

date: 01/31/2014

addendum no.: 01

sketch

E0.1a



A10 FIRST FLOOR PLAN - POWER
 SCALE: 1/8" = 1'-0"



morrissey
 engineering inc

mechanical | electrical | technology | commissioning

4940 North 118th Street
 Omaha, NE 68164

P: 402.491.4144

www.morrisseyengineering.com

JOHNSON BROCK PUBLIC SCHOOLS ADDITION

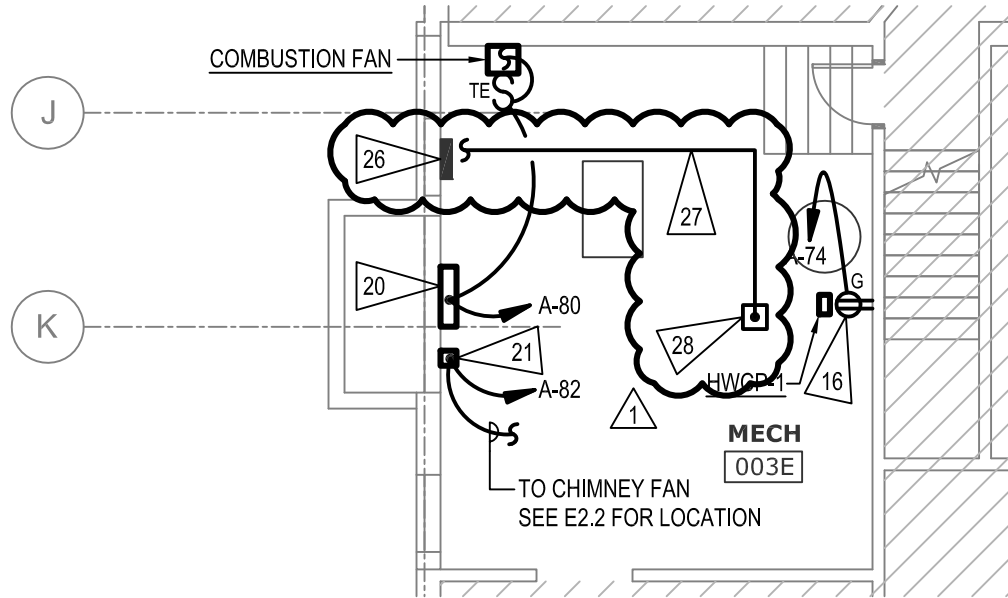
project no.: 13222

drawing referenced: E2.1

date: 01/31/2014

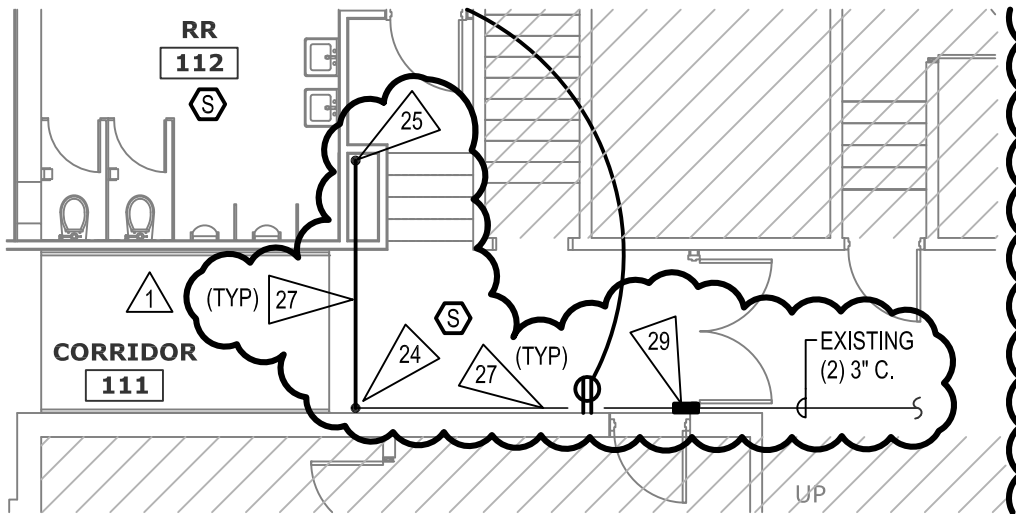
addendum no.: 01

sketch **E2.1a**



M1 LOWER LEVEL PLAN - POWER

SCALE: 1/8" = 1'-0"



A10 FIRST FLOOR PLAN - POWER

SCALE: 1/8" = 1'-0"



mechanical | electrical | technology | commissioning

4940 North 118th Street
Omaha, NE 68164

P: 402.491.4144

www.morrisseyengineering.com

JOHNSON BROCK PUBLIC SCHOOLS ADDITION

project no.: 13222

drawing referenced: E2.1

date: 01/31/2014

addendum no.: 01

sketch

E2.1b

22 FOR FLOOR BOXES IN LIBRARY/MEDIA 105, PROVIDE WIREMOLD #RFB4 SERIES MULTI-SERVICE FLOOR BOX. COORDINATE LOCATION OF FLOOR BOX WITH GENERAL CONTRACTOR PRIOR TO SLAB POUR. PROVIDE TWO 1" UNDERGROUND DATA CONDUITS WITH PULL STRINGS FROM FLOOR BOX LOW VOLTAGE COMPARTMENTS (ONE 1"C. TO EACH) TO FULL HEIGHT WALL. STUB CONDUIT OUT ABOVE ACCESSIBLE CEILING AND CABLE TRAY. TERMINATE WITH INSULATING BUSHING.

23 COORDINATE LOCATION OF POWER AND DATA DEVICES AT FRONT WALL WITH OWNER PRIOR TO ROUGH IN.

24 EXTEND EXISTING (2) 3" CONDUITS FROM LOCATION INDICATED TO SHARED MECHANICAL CHASE AND TO FLOOR BELOW. SEE BASEMENT PLAN ON THIS SHEET FOR CONTINUATION. PULL EXISTING FEEDERS INTO NEW CONDUIT.

25 ROUTE CONDUIT WITHIN CHASE TO FLOOR BELOW. CORE DRILL AS REQUIRED. COORDINATE CONDUIT ROUTING WITH MECHANICAL CONTRACTOR PRIOR TO ROUGH IN.

26 EXISTING PANEL LOCATED IN BASEMENT. FIELD COORDINATE EXACT LOCATION PRIOR TO BID.

27 MOUNT CONDUITS TIGHT TO STRUCTURE. PAINT NEW AND EXISTING CONDUITS LOCATED IN AREA OF REMODEL TO MATCH ADJACENT SURFACES. COORDINATE CONDUIT ROUTING WITH ARCHITECT PRIOR TO BID.

28 CONDUIT PENETRATION FROM FLOOR ABOVE. PROVIDE FIRE STOPPING AS REQUIRED - SEE SPECIFICATIONS. PROVIDE NEW PULL BOX AT CEILING AND SPLICE NEW CONDUCTORS TO EXISTING AS REQUIRED TO RE-FEED EXISTING PANEL. MATCH EXISTING CONDUCTORS IF ADDITIONAL LENGTH IS REQUIRED TO RECONNECT PANEL. SEE FIRST FLOOR PLAN ON THIS SHEET FOR CONTINUATION.

29 PROVIDE FIRE STOPPING FOR EXISTING CONDUIT PENETRATIONS AT NEW FIRE WALL - SEE SPECIFICATIONS.

TELECOMMUNICATIONS FLAG NOTES

T1 PROVIDE SIX DATA CABLES TO EACH OF FOUR FLOOR BOXES IN LIBRARY/MEDIA 105.

T2 PROVIDE TWO DATA CABLES TO EACH OUTLET UNLESS OTHERWISE INDICATED.

T3 PROVIDE ON DATA CABLE AT CEILING FOR WIRELESS ACCESS POINT (WAP). WIRELESS ACCESS POINT BY OWNER. PROVIDE 30'-0" SLACK LOOP COILED ABOVE CEILING.



morrissey
engineering inc

mechanical | electrical | technology | commissioning

4940 North 118th Street
Omaha, NE 68164

P: 402.491.4144

www.morrisseyengineering.com

**JOHNSON BROCK
PUBLIC SCHOOLS
ADDITION**

project no.: 13222

drawing referenced: E2.1

date: 01/31/2014

addendum no.: 01

sketch

E2.1c