



ADDENDUM NO. 02

Project: Stuhr Museum of the Prairie Pioneer

Project No.: L11019

Location: Grand Island, NE

Date: 01-27-14

This Addendum is issued by the Architect to all bidders of record prior to receipt of proposals. Bidders shall acknowledge receipt of this addendum by so indicating on the Proposal Form. Failure to do so may subject Bidder to disqualification.

All information and instructions given herein shall become a part of the Contract Documents.

GENERAL

1. Bid opening will be Tuesday February 4, 2014 at 2pm local Standard time.
2. All traffic entering the site is to flow in the counter-clockwise direction, as posted. 12 parking spaces on either side of the bridge to the Museum's island are to be kept clear for visitor parking. Arrangements can be made with the Museum for staging area in the parking areas beyond these spaces.

Access to the island is across the causeway. The walkway to the front (south) door of the museum is not to be used. Access to the building will be at the back (north) doors where there is an asphalt driveway. The west half of the ring road on the island can be used for staging and parking. Traffic to and from the building can use the east half of the ring road. The east half of the island ring road must be kept clear for emergency vehicle access. No parking or staging will be allowed on the grass of the island. Any damage to the lawn on the island (and elsewhere) shall be repaired and is the responsibility of the general contractor.

PROJECT MANUAL - ARCHITECTURAL

1. Section 072510 – FLUID APPLIED MEMBRANE AIR BARRIERS

A. Reference Paragraph 2.01,B: Add subparagraphs

3. Henry Company, Product: Henry Air Bloc 31 Vapor Permeable.
4. TK Products, Product: TK-AixMax 2014 Vapor Permeable.

B. Reference Paragraph 2.02,A: Delete this paragraph in its entirety and add the following paragraph.

“A PROSOCO R-GUARD CAT 5 – Single component, Silyl-Terminated-Poly-Ether (STPE) fluid applied, vapor permeable, air and water barrier membrane.”

- ##### **C. Reference Paragraph 2.02,B,4,a: After the words roller applied delete the following words “to produce a highly durable, seamless, elastic weatherproofing membrane.”**

2. Section 075300 – ELASTOMERIC MEMBRANE ROOFING.
 - A. Reference Paragraph 2.01,A: Add subparagraph
 5. Mule-Hide Products: www.mulehide.com
3. Section 087113 – “AUTOMATIC DOOR OPERATORS”.
 - A. See Attachment “A” for the added specifications section.
4. Section 102113.19 – PLASTIC TOILET COMPARTMENTS
 - A. Reference Paragraph 2.01,B: Add Paragraph
 6. Legacy Polymer Partitions: www.legacypoly.com
5. Section 129000 – MOVABLE DISPLAY WALL
 - A. Reference Paragraph 2.02,D, Delete this paragraph in its entirety. And insert paragraph
 - “D. Size: 8’x8’ face panel; 2’x8’ end panels; 2’x8’ top panels.”

DRAWINGS - ARCHITECTURAL

1. See Drawing Attachment “1” for added Demolition work. Refer to Sheet AD1.1.
2. See Drawing Attachment “2” for added Demolition work. Refer to Sheet AD1.1.
3. See Drawing Attachment “3” for revised ROOF EDGE DETAIL drawn on Sheet A1.13.
4. See Drawing Attachment “4” for revised FASCIA PANEL DETAILS drawn on Sheet A3.1.

DRAWINGS - STRUCTURAL

- 1 See the attached Structural Addendum No. 2 for CAST STONE FASCIA SUPPORT Detail.

PROJECT MANUAL – MECHANICAL

- 1 See the attached Addendum No. 2.

DRAWINGS – MECHANICAL

- 1 See the attached Addendum No. 2.

PROJECT MANUAL – ELECTRICAL

- 1 See the attached Addendum No. 2.

DRAWINGS – ELECTRICAL

- 1 See the attached Addendum No. 2.

BAHR VERMEER HAECKER ARCHITECTS

440 NORTH 8TH STREET STE 100
1425 JONES STREET
26 SOUTH TEJON STREET STE 300

LINCOLN NE 68508
OMAHA NE 68102
COLORADO SPRINGS CO 80903

402 475 4551
402 345 3060
719 471 8422

bvh.com

END OF ADDENDUM

BAHR VERMEER HAECKER ARCHITECTS

440 NORTH 8TH STREET STE 100
1425 JONES STREET
26 SOUTH TEJON STREET STE 300

LINCOLN NE 68508
OMAHA NE 68102
COLORADO SPRINGS CO 80903

402 475 4551
402 345 3060
719 471 8422

bvh.com

SECTION 087113

Attachment "A"
Addendum No. 2

AUTOMATIC DOOR OPERATORS

PART 1 - GENERAL

1.01 SECTION INCLUDES

- A. Full energy power door operators for swinging doors.

1.02 RELATED REQUIREMENTS

1. Section 079005 – Joint Sealers.
2. Section 084313 – Aluminum-Framed Storefronts: For entrances furnished separately.
3. Section 087100 – Door Hardware: For hardware to the extent not specified in this Section.
4. Electrical Contract Documents.

1.03 REFERENCE STANDARDS

- A. References: Comply with the version year adopted by the Authority Having Jurisdiction.
 1. 36 CFR 1191 - Americans with Disabilities Act Accessibility Guidelines for Buildings and Facilities; Final Rule; current edition; (2010 ADA Standards for Accessible Design).
 2. ICC/IBC - International Building Code.
 3. CUL – Approved for use in Canada.
 4. NFPA 70 - National Electrical Code.
 5. NFPA 80 - Fire Doors and Windows.
 6. NFPA 101 - Life Safety Code.
 7. NFPA 105 - Installation of Smoke Door Assemblies.
- B. American National Standards Institute (ANSI) / Builders Hardware Manufacturers Association (BHMA).
 1. ANSI/BHMA A156.10 American National Standard for Power Operated Pedestrian Doors.
- C. Underwriters Laboratories (UL).
 1. UL Listed R-9469 Fire Door Operator with Automatic Closer.
 2. UL 325 - Standard for Safety for Door, Drapery, Gate, Louver, and Window Operators and Systems.
 3. UL991 Listed - Tests for Safety-Related Controls Employing Solid-State Device.
- D. American Association of Automatic Door Manufacturers (AAADM).
- E. American Society for Testing and Materials (ASTM).
 1. ASTM B221 Standard Specification for Aluminum and Aluminum Alloy Extruded Bars, Rods, Wire, Profiles and Tubes.
 2. ASTM B209 Standard Specification for Aluminum and Aluminum Alloy Sheet and Plate.
- F. American Architectural Manufacturers Association (AAMA).
 1. AAMA 611 Voluntary Specification for Anodized Architectural Aluminum.

- G. National Association of Architectural Metal Manufacturers (NAAMM).
 - 1. Metal Finishes Manual for Architectural Metal Products.
- H. International Code Council (ICC).
 - 1. IBC: International Building Code Building Code.
 - 2. CBC: California Building Code.

1.04 DEFINITIONS

- A. Double Egress Doors: A pair of doors that simultaneously swing with the two doors moving in opposite directions with no mullion between them.
- B. Double Swing Doors: A pair of doors that swing with the two doors moving in opposite directions with a mullion between them; each door functioning as a single swing door.
- C. Activation Device: Device that, when actuated, sends an electrical signal to the door to activate the operation of the door.
 - 1. Knowing act: Consciously initiating the powered opening of a low energy door using acceptable methods including wall mounted switches such as push plates and controlled access devices such as keypads, card readers and key switches.
- D. Safety Device: A device that detects the presence of an object or person within a zone where contact could occur and provides a signal to stop the movement of the door.
- E. AAADM: American Association of Automatic Door Manufacturers.

1.05 PERFORMANCE REQUIREMENTS

- A. General: Provide automatic door operators that have been designed and fabricated to comply with specified performance requirements, as demonstrated by testing manufacturer's corresponding standard systems.
- B. Automatic door equipment accommodates medium to heavy pedestrian traffic and have the following minimum performance characteristics:
 - 1. Up to 220 pound (100 kg) weight of doors, 48 inches (1219 mm) maximum door width per surface mounted operator mounted on pull side of door.
- C. Operator capable of operating within temperature ranges of -22°F (-30°C) and 122°F (50°C).
- D. Opening Force requirements for Egress Doors: In the event of power failure to the operator, swinging automatic entrance doors shall open with a manual force, not to exceed 30lbf (133N) applied at 1" (25 mm) from the latch edge of the door.
- E. Break Away Device: Swinging automatic entrances shall require no more than 50 lbf (222 N) applied 1" (25 mm) from the latch edge of the door. When the door(s) is opened in the breakout mode, powered operated components excluding spring power shall not operate the doors.
- F. Closing Time:
 - 1. Doors shall be field adjustable to close from 90 degrees to 10 degrees in 2 seconds or longer as applicable per ANSI/BHMA A156.10 standards.

2. Doors shall be field adjusted to close from 10 degrees to fully closed in not less than 1.5 seconds.

1.06 SUBMITTALS

- A. See Section 013000 - Administrative Requirements, for submittal procedures.
- B. Product Data: Manufacturer's product data sheets including installation details, material descriptions, dimensions of individual components and profiles, fabrication, operational descriptions and finishes.
- C. Shop Drawings: Submit manufacturer's shop drawings, including elevations, sections and details, indicating dimensions, materials, operator, motion/presence sensor control device, anchors, hardware, finish, options and accessories.
 1. Indicate required clearances, and location and size of each field connection.
 2. Indicate locations and elevations of entrances showing activation and safety devices.
 3. Wiring Diagrams: For power, signal, and activation / safety device wiring.
- D. Samples: Submit manufacturer's samples of aluminum finish.
- E. Manufacturers Field Reports: Submit manufacturer's field reports from AAADM certified technician of inspection and approval of doors for compliance with ANSI/BHMA A156.10 after completion of installation.
- F. Operating and Maintenance Manuals: Provide manufacturers operating and maintenance manuals for each item comprising the complete door opening installation. The manual to include the name, address, and contact information of the manufacturers providing the hardware and their nearest service representatives. The final copies delivered after completion of the installation test to include spare parts list. Submit under provisions of Section 017800.
- G. Warranties and Maintenance: Special warranties and maintenance agreements specified in this Section. Submit under provisions of Section 017800.

1.07 QUALITY ASSURANCE

- A. Manufacturers Qualifications: Engage qualified manufacturers with a minimum 10 years of documented experience in manufacturing of doors and equipment of similar to that indicated for this Project and that have a proven record of successful in-service performance.
 1. A manufacturer with company certificate issued by AAADM.
- B. Installer Qualifications: Installers, trained by the primary product manufacturers, with a minimum 5 years documented experience installing and maintenance of units similar in material, design, and extent to that indicated for this Project and whose work has resulted in construction with a record of successful in-service performance.
- C. Certified Inspector Qualifications: Certified by AAADM.
- D. Source Limitations for Automatic Operators: Obtain each type of door operator and sensor components specified in this Section from a single source, same manufacturer unless otherwise indicated.

- E. Certifications: Operators shall be certified by the manufacturer to meet performance design criteria in accordance with the following standards.
 - 1. ANSI/BHMA A156.10 American National Standard for Power Operated Pedestrian Doors.
 - 2. NFPA 101 - Life Safety Code.
 - 3. UL 325 - Standard for Door, Drapery, Gate, Louver, and Window Operators and Systems.
 - 4. UL Listed R-9469 Fire Door Operator with Automatic Closer.
- F. Emergency Exit door requirements: Comply with requirements of authorities having jurisdiction for automatic entrance doors serving as a required means of egress.

1.08 COORDINATION

- A. Coordinate door operators with doors, frames and related work to ensure proper size, thickness, hand, function and finish. Coordinate hardware for automatic entrances with hardware required for rest of the project.
- B. Electrical System Roughing-in: Coordinate layout and installation of power door operators with connections to power supplies and access control system as applicable.

1.09 WARRANTY

- A. See Section 017800 - Closeout Submittals, for additional warranty requirements. Special warranties specified in this Article shall not deprive Owner of other rights Owner may have under other provisions of the Contract Documents and shall be in addition to, and run concurrent with, other warranties made by Contractor under requirements of the Contract Documents.
- B. Automatic Door Operators shall be free of defects in material and workmanship for a period of two (2) years from the date of substantial completion.
- C. During the warranty period a factory-trained technician shall perform service and affect repairs. An inspection shall be performed after each adjustment or repair.
- D. During the warranty period all warranty work, including but not limited to emergency service, shall be performed during normal business hours.
- E. Manufacturer shall have in place a dispatch procedure that shall be available 24 hours a Day, 7 Days a week for emergency call back service.

PART 2 - PRODUCTS

2.01 MANUFACTURER

- A. Basis of Design Manufacturer: ASSA ABLOY Entrance Systems, 1900 Airport Road, Monroe, NC 28110. Toll Free (877) SPEC-123. Phone (704) 290-5520 Fax (704) 290- 5555 Website www.besam-usa.com contact: specdesk.na.besam@assaabloy.com
- B. Additional approved manufacturers:
 - 1. Record-USA 8100 by Rogers Automated Entrances.
 - 2. Substitutions: See Section 016000 - Product Requirements.

2.02 AUTOMATIC SWING DOOR OPERATOR

- A. Model: Besam PowerSwing full energy automatic door operator.
1. Configuration: Operator to control pairs of swinging Doors 100.1 and 100.2 and specified below:
 - a. Traffic Pattern: Two Way.
 - b. Pairs of Doors: Simultaneous swing.
 2. Automatic Operator: Electro-hydraulic, non-handed operator, powered by 1/6 hp motor. Spring shall be adjustable to compensate for different manual push forces required on varying door widths.
 - a. Operator Housing: Operator is contained in a 5-1/8" (130.2 mm) deep x 4-5/16" (110 mm) high extruded aluminum housing.
 - 1) Surface Mounted Header: Standard Width.
 - b. Connecting Hardware: Steel arm from the operator, secured to the top face of the swing door.
 - c. UL Listed R-9469 Fire Door Operator with Automatic Closer.
 - d. Operator can be field adjusted to comply with ANSI/BHMA A156.19 American National Standard for Power Assist and Low Energy Operated Doors. Activation devices may also need to be switched to knowing-act activation devices for compliance with ANSI/BHMA A156.19.
 - e. Electrical Characteristics: Nominal current draw 222 watts (1.85 amps at 120 VAC), built-in thermal overload protection.
 3. Door Operation:
 - a. Opening Cycle: The adjustable speed operator hydraulically powers the drive shaft which maintains constant engagement throughout the opening cycle. Operator shall allow manual door operation with operational forces of 15 lbf maximum to fully open the door applied at 1" (25 mm) from the latch edge of the door.
 - b. Hold Open: The operator shall stop and hold the door open at the selected door opening angle for an adjustable period of time.
 - c. Closing Cycle: Closing shall be provided by means of spring.
 - d. Hydraulic Bypass: Operator to include standard hydraulic bypass (relief valve) which automatically prevents motor overload if the door is restricted during the opening cycle.
 - e. Stack Pressure Compensation: Operator is designed to counteract most wind and/or interior stack pressures without an additional power assist mechanism.
 - f. Electronic Controls: Solid state integrated circuit controls the operation and switching of the swing power operator. The electronic control provides low voltage power supply for all means of actuation. The controls include time delay (5 to 30 seconds) for normal cycle.
 4. Operator Interface:
 - a. Safety Sensor Integration for overhead presence safety device and door mounted reactivation safety sensors.
 - b. Electric Strike Integration for electrified door hardware.

2.03 ACTIVATION DEVICES

- A. General: Provide activation devices in accordance with ANSI/BHMA A156.10 standards, for condition of exposure and for long-term, maintenance-free operation under normal traffic load for type of occupancy indicated. Coordinate activation and devices with door operation and door operator mechanisms.
- B. Automatic Activation Device:

1. Motion Sensors: Self-contained, K-band-frequency, microwave-scanner unit; achieving both a narrow or wide sensing pattern, adjustable to provide detection field sizes and functions required by ANSI/BHMA A156.10.
 - a. Motion Sensors to offer three motion detection actions; bi-directional, uni-directional, and uni-MTF detection.

2.04 SAFETY DEVICES

- A. General: Provide safety devices in accordance with ANSI/BHMA A156.10 standards, for condition of exposure and for long-term, maintenance-free operation under normal traffic load for type of occupancy indicated. Coordinate safety devices with door operation and door operator mechanisms.
- B. Presence Detection Systems and Safety Devices:
 1. Besam I-Adapt Premium Safety Sensor System A202 (Basis of Design), Door Mounted Presence Sensor Adaptable Field (DMPS-AF) as specified:
 - a. Door Mounted Presence Detector Adaptable Field (DMPS-AF): Door mounted combination activation motion sensor/safety presence sensor, utilizing active infrared reflection technology with auto adapting field. Sensor shall be door mounted on both the swing (pull) side and the approach (push) side of the door (2 sensors per leaf). The active infrared reflection shall detect moving or stationary presence people or objects in the swing path of the door.
 - 1) The infrared presence detection shall always be active and remain active when the door is in motion. The sensor provides a full detection pattern that covers the entire swing of the door and also provides detection in the full open and full close position.
 - 2) The sensor has an auto adapting field which maximizes the sensor pattern tailored to the environment providing detection beyond the moving part of the door. The sensor provides detection to the wall and or guide rails ensuring maximum safety resulting in the door stopping much sooner (further) from the person using the doorway.
 - 3) Upon detection the sensor shall provide a signal to slow, stop, or reverse the door action depending on the situation.
 - 4) The sensor provides secondary activation as required for "knowing act" doorways.
 - 5) Since the infrared presence detection is always active, no overhead safety sensor is required.
 - 6) Operating temperature range of -4° F to 131° F (-20° C to 55°).
 - 7) Motion/presence detecting sensors to be field installed and adjusted.

2.05 ACCESSORIES

1. Guide Rails. See Section 055213 – Pipe and Tube Railings.

2.06 GENERAL FINISH REQUIREMENTS

- A. Comply with NAAMM's "Metal Finishes Manual for Architectural and Metal Products" for recommendations for applying and designating finishes.

2.07 ALUMINUM FINISHES

- A. Automatic Operator Enclosure: Color and finish shall match aluminum storefront that operator is installed upon. There are two different finishes required.
 - 1. Anodized Finish: Doors 100.1.
 - a. AAMA 611, Dark Bronze, AA-M12C22A44, Class I, 0.018 mm.
 - 2. Painted Finish: Doors 100.2.
 - a. Kynar finish, 3 coat, to match aluminum storefront that operator is installed upon.

PART 3 - EXECUTION

3.01 EXAMINATION

- A. Examine doors and frames, with Installer present, for compliance with requirements for installation tolerances, wall and floor construction, and other conditions affecting performance.
- B. Examine roughing-in for electrical source power to verify actual locations of wiring connections.
- C. Proceed only after such discrepancies or conflicts have been resolved.

3.02 INSTALLATION

- A. Do not install damaged components. Fit joints to produce hairline joints free of burrs and distortion. Rigidly secure non-movement joints.
- B. Operators: Install automatic operators plumb and true in alignment with established lines and grades without warp or rack of framing members and doors. Anchor securely in place.
 - 1. Install surface mounted hardware using concealed fasteners to greatest extent possible.
 - 2. Set headers, carrier assemblies, tracks, operating brackets and guides level and true to location with anchorage for permanent support.
- C. Door Operators: Connect door operators to electrical power distribution system as indicated in electrical contract documents.
- D. Sealants: Comply with requirements specified in division 7 Section "Joint Sealants" to seal between the operator housing and the adjacent wall surface.
- E. Signage: Apply signage on both sides of each door and sidelite as required by ANSI/BHMA A156.10, and manufacturers installation instructions.

3.03 FIELD QUALITY CONTROL

- A. Manufacturers Field Services:
 - 1. Manufacturer's representative shall provide technical assistance and guidance for installation of doors.
 - 2. Before placing doors into operation, AAADM certified technician shall inspect and approve doors for compliance with ANSI/BHMA A156.10. Certified technician shall be approved by manufacturer.

3.04 ADJUSTING

- A. Adjust door operators, controls and hardware for smooth and safe operation and for weather tight closure. Adjust doors in compliance with ANSI/BHMA A156.10.

3.05 CLEANING AND PROTECTION

- A. Clean adjacent surfaces soiled by door installation.
- B. Clean metal surfaces promptly after installation. Remove excess sealants, compounds, dirt and other substances. Repair damages finish to match original finish.

3.06 DEMONSTRATION

- A. Engage a factory-authorized representative to train Owner's maintenance personnel to adjust, operate, and maintain safe operation of the door.

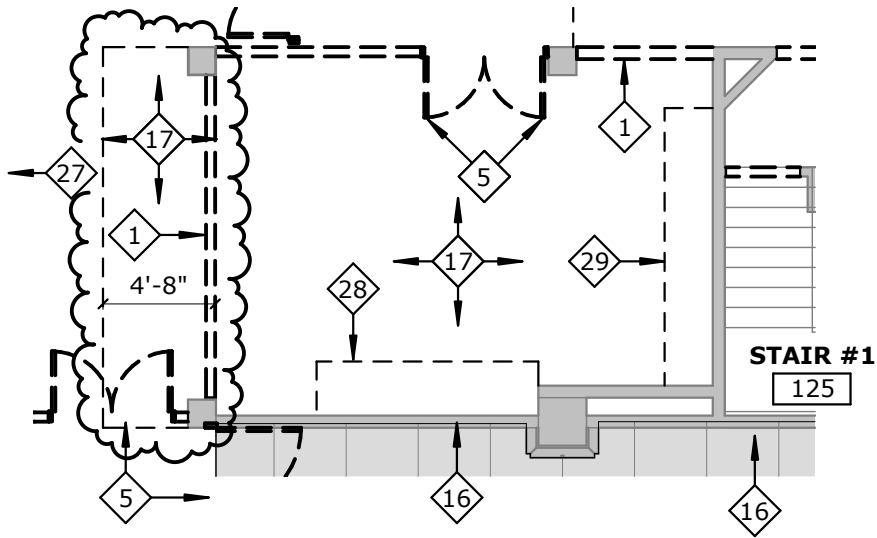
END OF SECTION



STUHR MUSEUM OF THE PRAIRIE PIONEER REHABILITATION

ASI NO.:
 ADDENDUM NO.: 2
 CHANGE PROPOSAL REQUEST NO.:
 R.F.I REQUEST NO.:
PROJECT: L11019
PROJECT DATE: 01.06.2014
ISSUE DATE: 01/27/14

ATTACHMENT DRAWING 1 OF 4



1 FIRST FLOOR DEMOLITION PLAN - ADD 2.1

1/8" = 1'-0" REFER TO SHEET AD1.1 - PLAN DRAWING A8



ARCHITECT
BAHR VERMEER HAECKER ARCHITECTS
440 N 8TH ST STE 100
LINCOLN NE 68508
V. 402.475.4551
F 402.475.0226

- ASI NO.:
- ADDENDUM NO.: 2
- CHANGE PROPOSAL REQ. NO.:
- R.F.I REQUEST NO.:

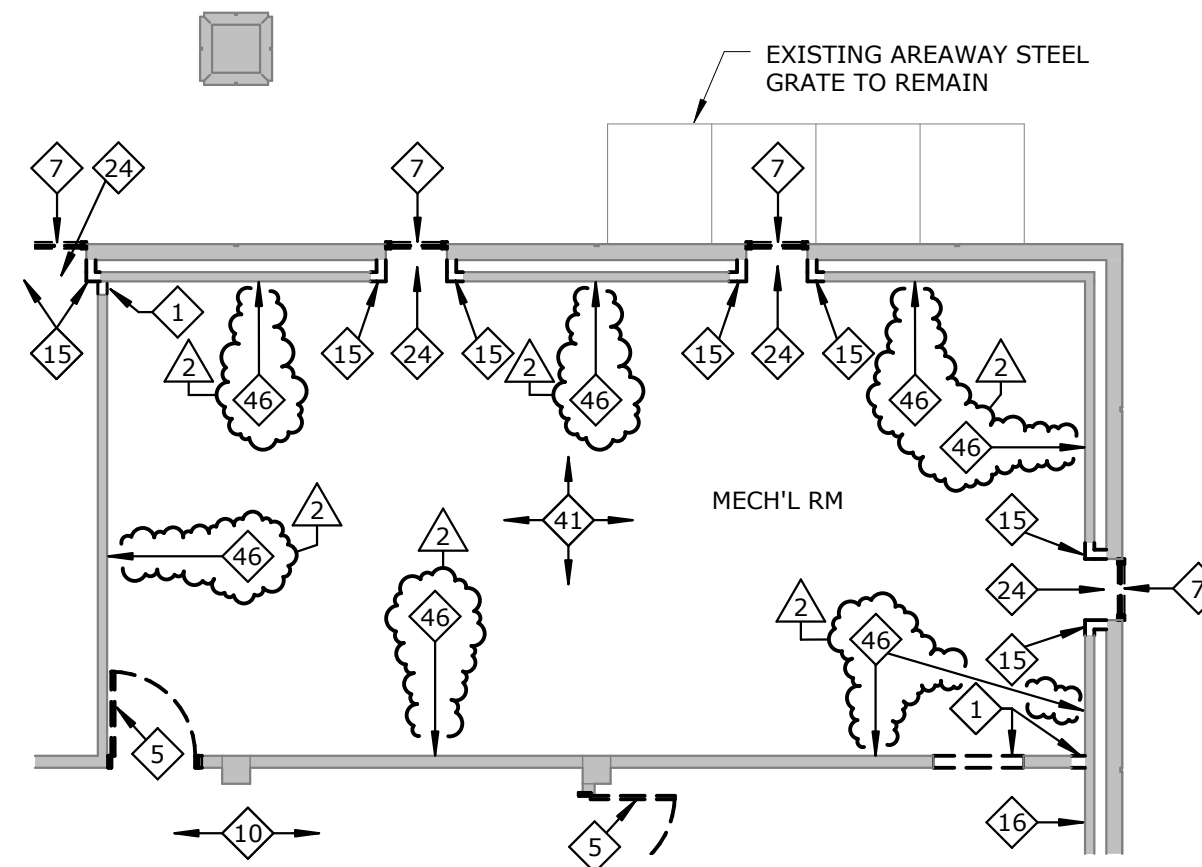
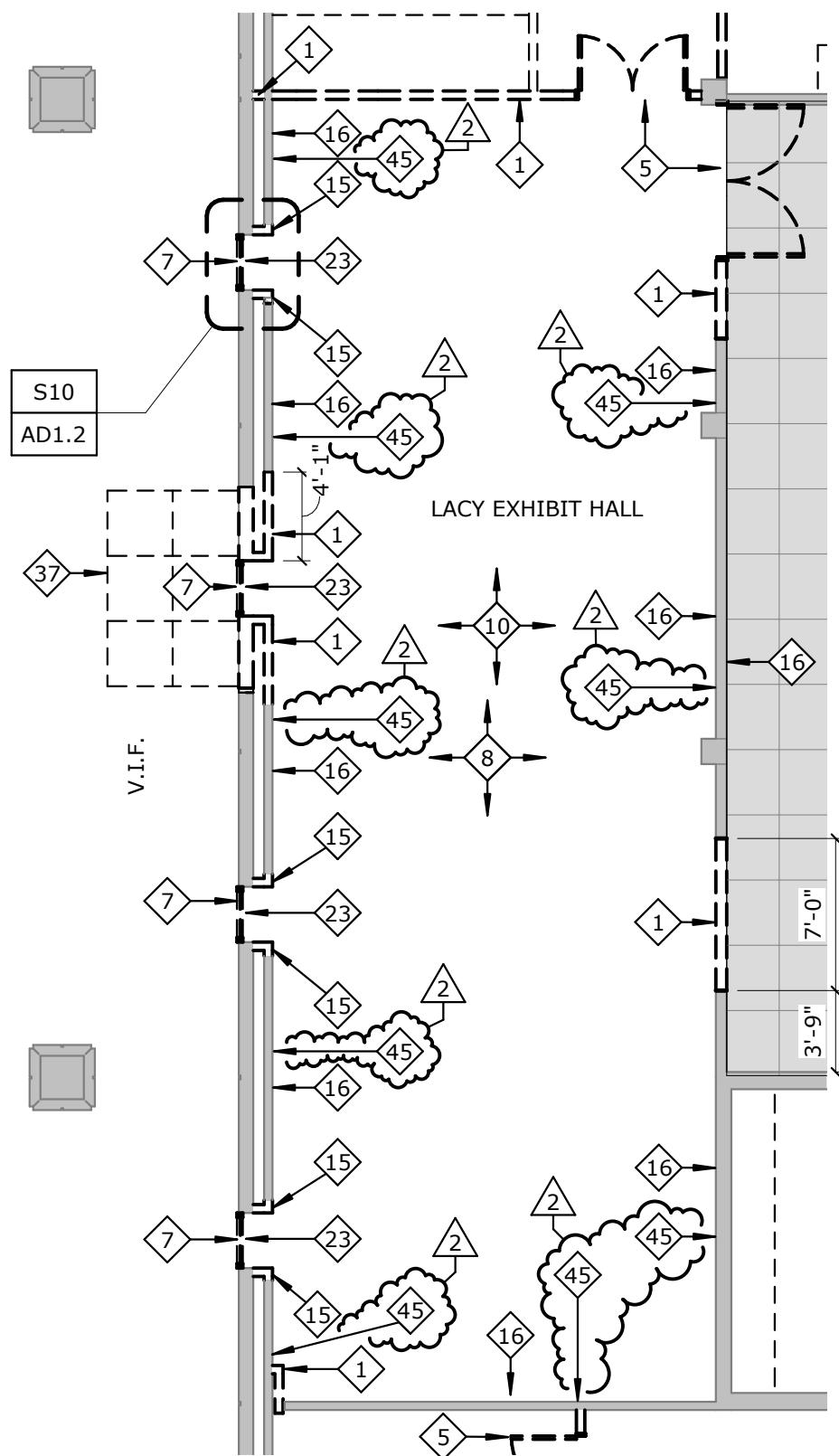
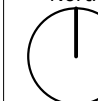
STUHR MUSEUM OF THE PRAIRIE PIONEER REHABILITATION

PROJECT: L11019
PROJECT DATE: 01.06.2014
ISSUE DATE: 01/27/14
© Copyright 2011 Bahr Vermeer Haecker Architects, LTD

ATTACHMENT DRAWING 2 OF 4

ADD 2.2

Project North



2 FIRST FLOOR DEMOLITION PLAN - ADD 2B

1/8" = 1'-0" REFER TO SHEET AD1.1 - PLAN DRAWING A8

DEMOLITION KEYNOTES:

REFER TO SHEET AD1.1

- 45 REMOVE EXISTING WALL CARPET IN ITS ENTIRETY AND ALL ADHESIVE RESIDUE AND FASTENERS FROM THE EXISTING WALL SUBSTRATE IN THIS ROOM.
- 46 REMOVE ALL EXISTING ACOUSSTICAL WALL TILES ONLY AND ADHESIVE RESIDUE IN THIS ROOM.

1 FIRST FLOOR DEMOLITION PLAN - ADD 2A

1/8" = 1'-0" REFER TO SHEET AD1.1 - PLAN DRAWING A8



ARCHITECT
 BAHR VERMEER HAECKER ARCHITECTS
 440 N 8TH ST STE 100
 LINCOLN NE 68508
 V. 402.475.4551
 F 402.475.0226

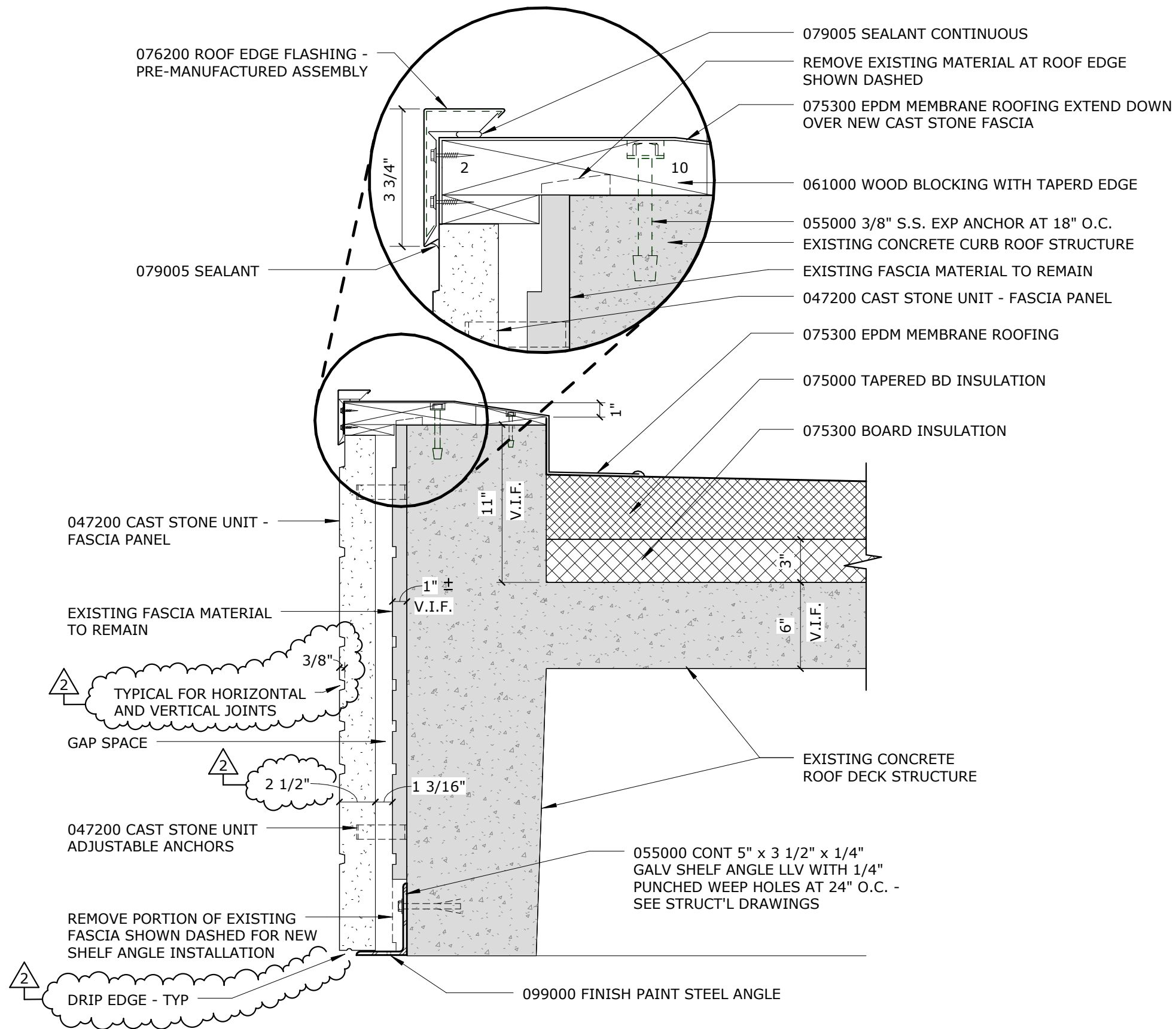
- ASI NO.:
- ADDENDUM NO.: 2
- CHANGE PROPOSAL REQ. NO.:
- R.F.I REQUEST NO.:

STUHR MUSEUM OF THE PRAIRIE PIONEER REHABILITATION

PROJECT: L11019
 PROJECT DATE: 01.06.2014
 ISSUE DATE: 01/27/14
 © Copyright 2011 Bahr Vermeer Haecker Architects, LTD

ATTACHMENT DRAWING 3 OF 4

ADD 2.3

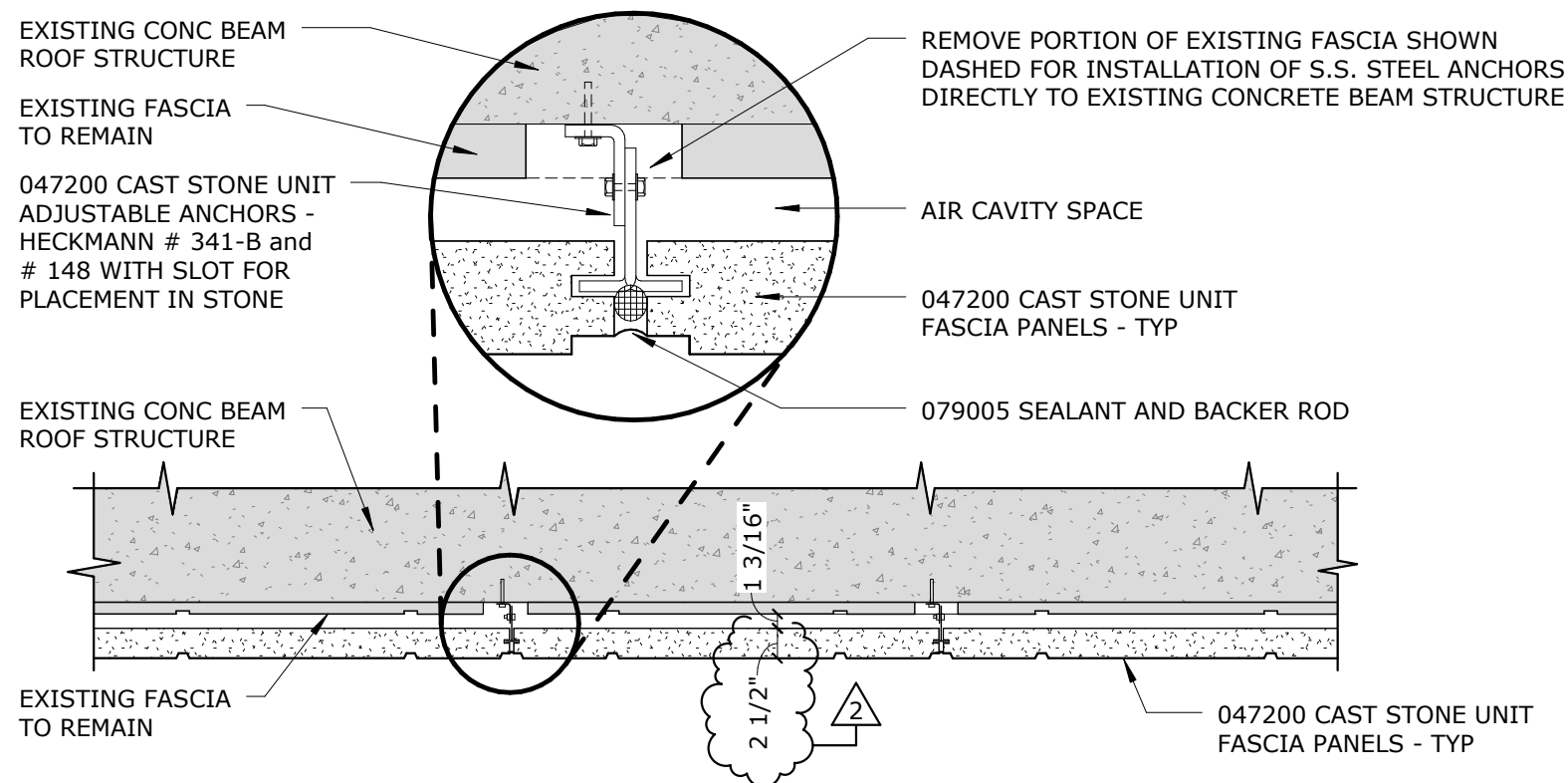


1 ROOF EDGE DETAIL - ADD 2
 1 1/2" = 1'-0" REFER TO SHEET A1.13

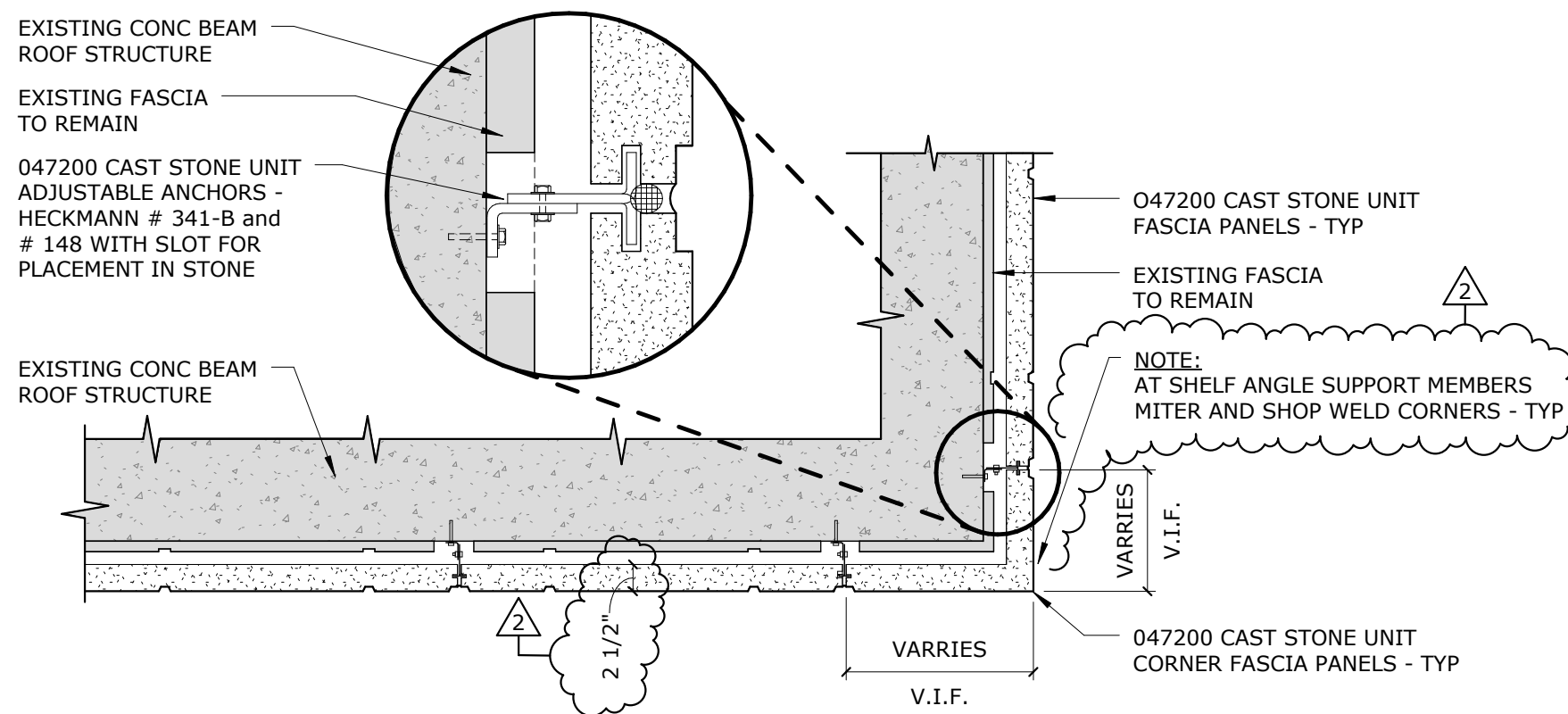


ARCHITECT
 BAHR VERMEER HAECKER ARCHITECTS
 440 N 8TH ST STE 100
 LINCOLN NE 68508
 V. 402.475.4551
 F. 402.475.0226

- ASI NO.:
- ADDENDUM NO.: 2
- CHANGE PROPOSAL REQ. NO.:
- R.F.I REQUEST NO.:



1 FASCIA PANEL PLAN DETAIL - TYP - ADD 2
 3/4" = 1'-0" REFER TO SHEET A3.1



2 FASCIA PANEL PLAN CORNER DETAIL - TYP - ADD 2
 3/4" = 1'-0" REFER TO SHEET A3.1

STUHR MUSEUM
 OF THE PRAIRIE
 PIONEER
 REHABILITATION

PROJECT: L11019
 PROJECT DATE: 01.06.2014
 ISSUE DATE: 01/27/14
 © Copyright 2011 Bahr Vermeer Haecker Architects, LTD

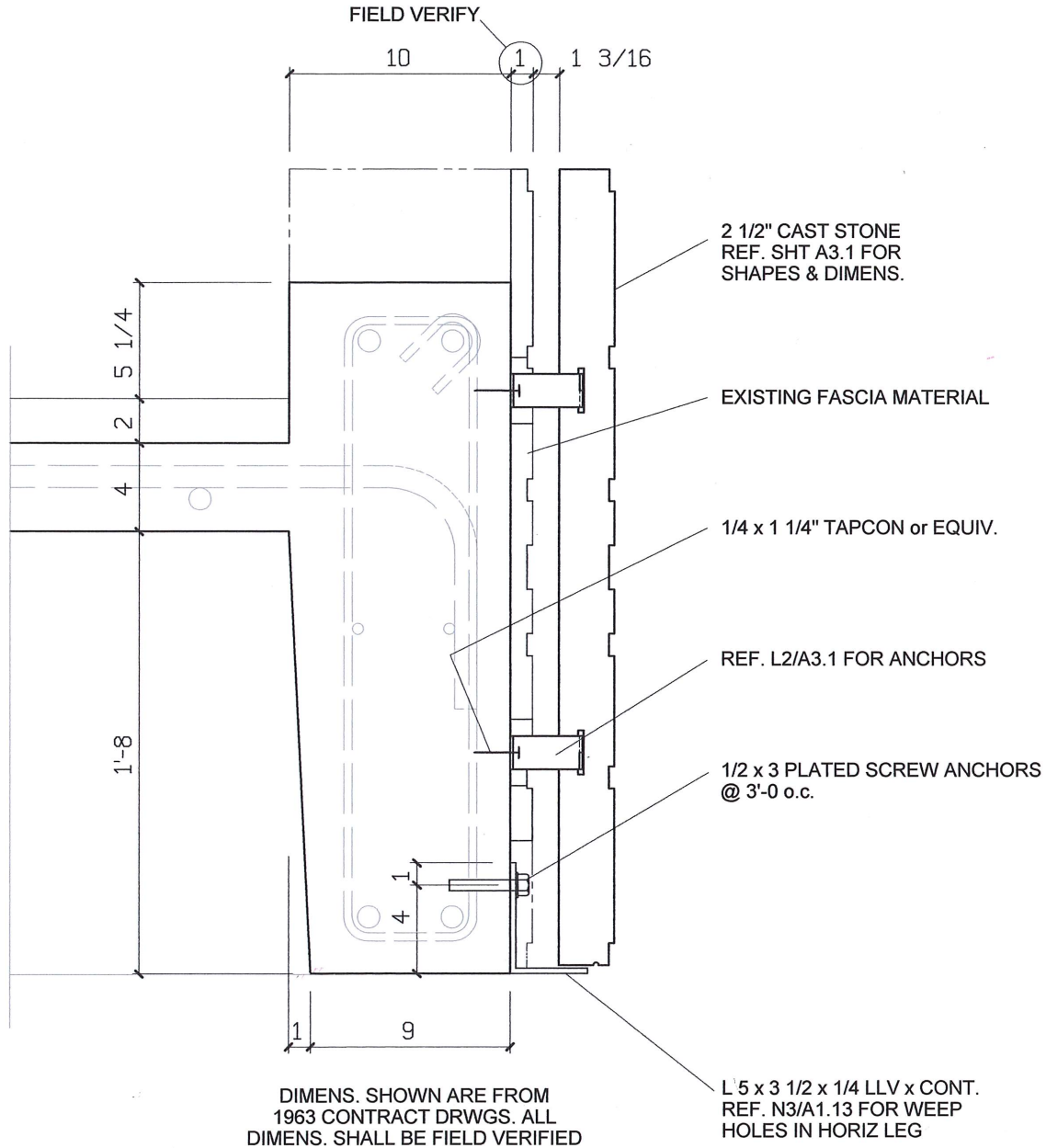
ATTACHMENT
 DRAWING 4 OF 4

ADD 2.4



STUHR MUSEUM OF THE PARAIRIE PIONEER REHABILITATION ADDENDUM 002

DATE: 1/27/14



5

CAST STONE FASCIA SUPPORT

3/4" = 1'-0

ref. sht. S1.0

VOSS & ASSOCIATES Inc.
STRUCTURAL ENGINEERS

This addendum is hereby made a part of the contract documents to the same extent as though it were originally included therein. Specifications and drawings shall be considered modified or revised as hereinafter described. Revisions to the drawings are referenced by the drawing number.

Changes to the Project Manual

Mechanical Specification Items:

2MS1. Section 23 09 13 – Instrumentation and Control Devices for HVAC

1. Page 23 09 13 - 3: Article 1.07, Paragraph B: Replace “five” with “one.”

2MS2. Section 23 09 13.53 – Variable-Frequency Motor Controllers for HVAC

1. Page 23 09 13.53 - 2, Article 2.01: Add paragraphs as follows:
“I. Eaton – Cutler Hammer.
J. Emerson.”

2MS3. Section 23 09 23 – Direct-Digital Control System for HVAC

1. Page 23 09 23 – 2, Paragraph 2.01: Add paragraph as follows, moving subsequent paragraphs down:
“J. Delta Controls.”

2MS4. Section 23 21 13 – Hydronic Piping

1. Page 23 21 13 - 9, Article 2.14, Paragraph A: Add subparagraph as follows:
“6. Patterson.”
2. Page 23 21 13 - 10, Article 2.15, Paragraph A: Add subparagraph as follows:
“9. PRO Hydronic Specialties.”

2MS5. Section 23 21 14 – Hydronic Specialties

1. Page 23 21 14 - 2, Article 2.01, Paragraph A: Add subparagraph as follows:
“6. Patterson.”
2. Page 23 21 14 - 2, Article 2.03, Paragraph A.1: Add subparagraph as follows:
“f. Thrush.”
3. Page 23 21 14 - 3, Article 2.05, Paragraph A: Add subparagraph as follows:
“11. PRO Hydronic Specialties.”

4. Page 23 21 14 - 3, Article 2.06, Paragraph A: Add subparagraph as follows:

“11. PRO Hydronic Specialties.”

2MS6. Section 23 25 00 – HVAC Water Treatment

1. Page 23 25 00 - 2, Article 2.03, Paragraph A: Add subparagraph as follows, moving subsequent paragraphs down:

“4. General Treatment Products.”

2MS7. Section 23 33 00 – Air Duct Accessories

1. Page 23 33 00 - 5, Article 2.08, Paragraph A: Modify subparagraph as follows:

“14. United Enertech.”

2. Page 23 33 00 - 6, Article 2.10, Paragraph A: Add subparagraph as follows:

“11. United Enertech.”

2MS8. Section 23 34 23 – HVAC Power Ventilators

1. Page 23 34 23 – 2, Article 2.01: Add paragraph as follows:

“H. Soler and Palau.”

2MS9. Section 23 36 00 – Air Terminal Units

1. Page 23 36 00 - 2, Article 2.02: Add paragraph as follows:

“l. Johnson Controls.”

2MS10. Section 23 37 00 – Air Outlets and Inlets

1. Page 23 37 00 - 3, Article 2.05, Paragraph A: Add subparagraph as follows:

“11. United Enertech.”

2. Page 23 37 00 - 4, Article 2.06, Paragraph A: Add subparagraph as follows:

“8. United Enertech.”

2MS11. Section 23 38 13 – Commercial-Kitchen Hoods

1. Page 23 38 13 - 2, Article 2.01, Paragraph A: Add subparagraph as follows, moving subsequent paragraphs down:

“1. Greenheck.

2MS12. Section 23 52 16 – Condensing Boilers

1. Page 23 52 16 - 2, Article 2.01, Paragraph A: Modify subparagraph as follows:

“3. Riverside Hydronics.”

2MS13. Section 23 81 01 – Terminal Heat Transfer Units

1. Page 23 81 01 - 2, Article 2.02, Paragraph A: Add subparagraph as follows, moving subsequent paragraphs down:

“22. Vulcan.”

2MS14. Section 23 84 15 – Steam and Atomizing Humidifiers

1. Page 23 84 15 - 1, Article 2.01: Add paragraph as follows:

“J. Neptronics.”

Electrical Specification Items:

1ES1. Section 26 32 13 Engine Generators

1. Page 26 32 13 – 2, Article 2.01, Paragraph A: Add subparagraph as follows:

“3. Generac.”

1ES2. Section 26 36 00 - Transfer Switches

1. Page 26 32 13 – 2, Article 2.01: Add paragraph as follows:

“C. Generac.”

Security Specification Items:

2SCS1. Section 28 05 00 – Common Work Results for Electronic Safety and Security

1. Page 28 05 00 – 8, Article 2.02, Paragraph B: Add subparagraph as follows:

“8. Avigilon.”

2. Page 28 05 00 – 8, Article 2.02, Paragraph C: Add subparagraph as follows:

“6. Avigilon.”

2SCS2. Section 28 23 00 – Electronic Video Surveillance System

1. Page 28 23 00 – 1, Article 1.02: Add paragraph as follows:
 - “B. The design basis is an analog CCTV system with DVR. If an IP-based security camera system is provided, it shall meet or exceed the requirement listed herein, and it shall include an appropriately sized recording server and network switch for a fully functional system.”

Changes to the Drawings

Mechanical Drawing Items:

2MD1. Sheet M1.2 – Second Floor Plan – Plumbing

1. Modify Flag Note 2 to read the following:

“In this area all sprinkler piping shall be exposed. The Fire Sprinkler Contractor shall submit a plan layout to the Architect and Engineer prior to submittal. The official fire sprinkler shop drawing for coordination of piping and head layout.”

2MD2. Sheet M5.1 – Mechanical Details and Schedules

1. Terminal Unit Detail 5: Modify thickness of supply air insulation from 1-1/2” to 2”.

Electrical Drawing Items:

2ED1. Sheet E0.0 – Electrical Symbols and Abbreviations

1. Lighting Control Schedule: The following lighting control manufacturers are considered equivalent for bidding purposes if equal to the specified lighting control devices and are subject to final shop drawing review. Lighting control devices may be rejected during the shop drawing review process if the Architect, Owner, or Engineer’s review does not find the submitted lighting control device(s) to be equivalent: WattStopper DLM and Touch e Lighting Control.

2ED2. Sheet E4.0 - Electrical Schedules

1. Lighting Fixture Schedule:
 - A. Light Fixture Type 36: LED color temperature shall be 3000K. Modify catalog number to be “7779 LED BRZ.”
 - B. Modify Note 20 to read as follows: “Provide light fixture with 3-wire line voltage dimmable driver compatible with control system provided.”
 - C. The following lighting fixture manufacturers are considered equivalent for bidding purposes if equal to the specified lighting fixtures and are subject to final shop drawing review. Light fixtures may be rejected during the shop drawing review process if the

Architect, Owner or Engineers review does not find the submitted lighting fixture(s) to be equivalent.

<u>Type:</u>	<u>Manufacturer:</u>
1A	Beghelli
1B	ERCO
1C	ERCO
2	Portfolio
3	DALS Lighting, Inc
4A/4B	Ametrix
5	Axis
6A/6B	Axis
7	Metalux
8	Metalux
9	Corelite
10	Emergi-Lite
11	Emergi-Lite
13	Barron Lighting
14	Architectural Lighting Works
15	Architectural Lighting Works
17	Architectural Lighting Works
18A,18B,18C, 18D,18E,18F, 18G	Architectural Lighting Works, Axis Lighting
19	American Lighting
20	Emergi-Lite
21	ERCO
22	Emergi-Lite
23	Metalux
24	Emergi-Lite
25	Corelite
28	FC Lighting
29	Lumiere
30	Invue
32	ERCO
33	Fail-Safe
34	Fail-Safe
35	Fail-Safe
36	US Architectural
	END

WKL/SEF/GAN-mdg-fle