



<b>PROJECT:</b>	CENTENNIAL PUBLIC SCHOOL ADDITION AND RENOVATION	<b>PROJECT NO.</b>	L13030
<b>FROM:</b>	BVH ARCHITECTS	<b>DATE:</b>	OCT. 25, 2013
<b>TO:</b>	CHEEVER CONSTRUCTION	<b>ADDENDUM NO.</b>	BID PACKAGE #4 ADDENDUM #1

*This Addendum is issued by the Architect to all bidders of record prior to receipt of proposals. Bidders shall acknowledge receipt of this addendum by so indicating on the Proposal Form. Failure to do so may subject Bidder to disqualification.*

*All information and instructions given herein shall become a part of the Contract Documents.*

#### **DRAWINGS**

1. Sheet M1.1, MECHANICAL ROOF TOP UNIT LOCATIONS, sheet attached
  - A. DETAIL A8, MECHANICAL ROOF TOP UNIT LOCATIONS
    1. Floor plan illustrates Roof Top Unit (RTU) locations and provides weight information for reference only.

**END OF ADDENDUM**

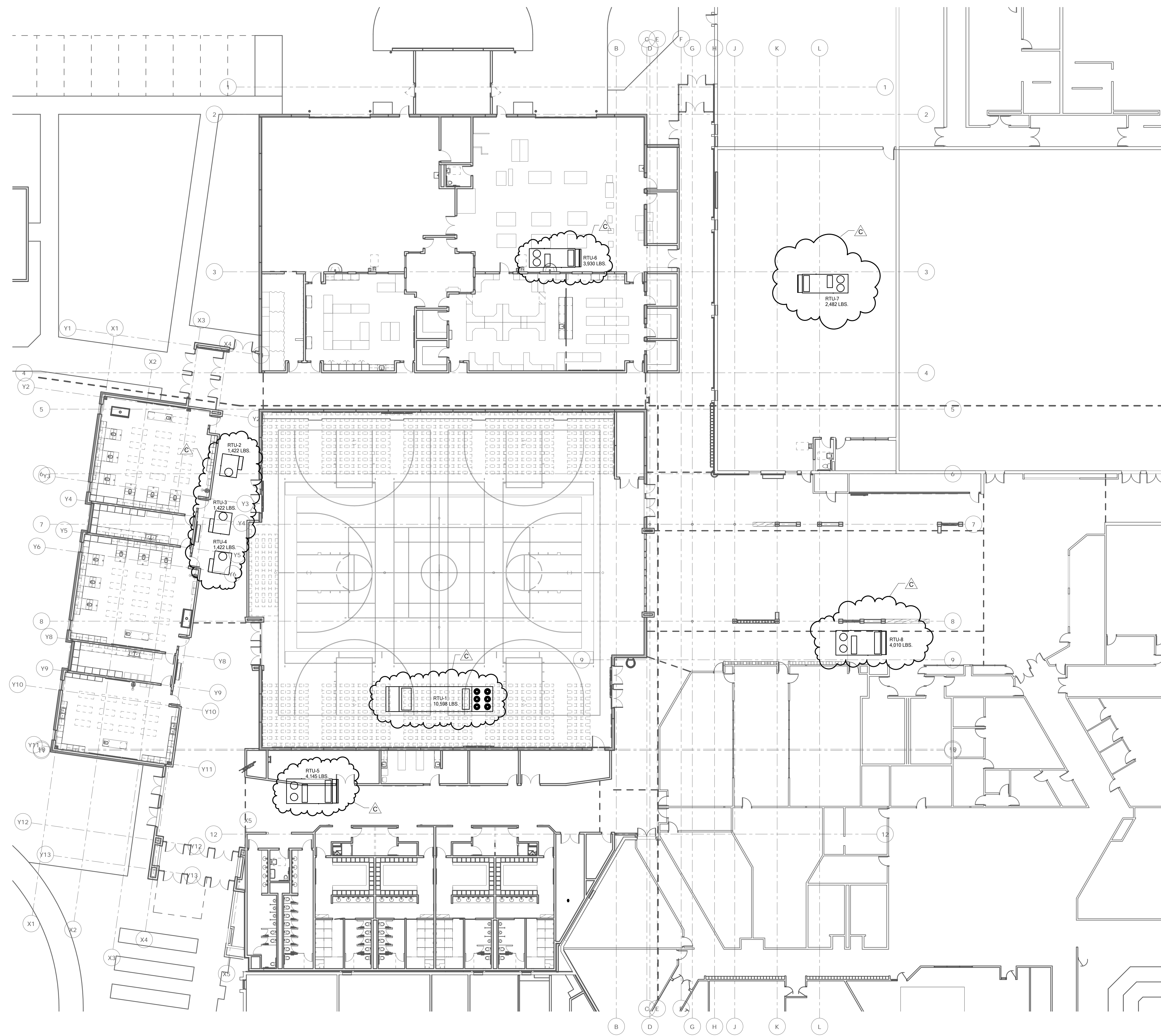


ARCHITECT  
 BAHR VERMEER HAECKER ARCHITECTS  
 440 N 8TH ST STE 100  
 LINCOLN NE 68508  
 V 402 475 4551  
 F 402 475 0226  
 bvh.com

STRUCTURAL ENGINEER  
 VOSS & ASSOCIATES, INC.  
 201 N 7TH STREET, STE 200  
 LINCOLN NE 68504  
 V 402 476 6365  
 F 402 476 6414  
 voss-associ.com

MECHANICAL/ELECTRICAL ENGINEER  
 ENGINEERING TECHNOLOGIES, INC.  
 825 M STREET, STE 310  
 LINCOLN NE 68508  
 V 402 476 1273  
 ETI Project #2013-077  
 eti-engineers.com

CIVIL ENGINEER  
 REGA ENGINEERING GROUP, INC.  
 1625 S 70TH STREET, STE 103  
 LINCOLN NE 68506  
 V 402 484 7342  
 F 402 484 7344  
 regaengineering.com



REVISIONS SCHEDULE		
MARK	DATE	DESCRIPTION
C	10.25.2013	BP4 - ADDENDUM #1

CENTENNIAL PUBLIC SCHOOL ADDITION AND RENOVATION

PROJECT: L13030 DATE: OCT 15, 2013  
© copyright bvh.com/etinc

THIS SHEET FOR REFERENCE ONLY

MECHANICAL ROOF TOP UNIT LOCATIONS



BP-4  
 M1.1

**A8** MECHANICAL ROOF TOP UNIT LOCATIONS  
 1/16" = 1'-0"