

Sampson Construction Co., Inc.
3730 South 14th Street
Lincoln, NE 68502
Phone: (402) 434-5450
FAX: (402) 434-5466

Bid Bulletin #02

PROJECT: Baldwin Filters Distribution Facility (Bid Package #01)
Kearney, NE




DATE: September 23, 2013

This Bid Bulletin includes items 1-1. Each item shall be fully incorporated into the Bidding/Contract Documents and have the same force and effect as though originally included. Bidders shall acknowledge receipt of this Bid Bulletin on the bid form.

Item 1-1 **Specification section 00 01 50- Preliminary Project Schedule**
Enclosed is the preliminary project schedule

END OF BID BULLETIN #02

Activity ID	Activity Description	Orig Dur	Rem Dur	Early Start	Early Finish	2013												2014												2015
						U	A	S	O	N	D	J	F	M	A	M	J	J	A	S	O	N	D	J						
Project Milestones																														
1001	Schematic Estimate Drawings Issued	0	0		22JUL13A																									
1011	Planning Commission Submittal Package to COK	0	0	26JUL13A																										
1021	Sampson Schematic Estimate Due	0	0		05AUG13A																									
1031	Planning Commission Meeting	0	0	15AUG13A																										
1041	City Council Meeting	0	0	10SEP13*																										
1051	Guaranteed Maximum Price	0	0	06NOV13*																										
Site Demolition/Excavation Package																														
1061	Bid Package Issued to Printer from Davis Design	0	0	12SEP13*																										
1071	Subcontractor Solicitations	12	12	16SEP13	01OCT13																									
1081	Subcontractor Bids Due	0	0		03OCT13																									
1091	Bid Review & Approval	2	2	09OCT13	10OCT13																									
Site Utility Package																														
1101	Bid Package Issued to Printer from Davis Design	0	0	14OCT13																										
1111	Subcontractor Solicitations	12	12	14OCT13	29OCT13																									
1121	Subcontractor Bids Due	0	0		29OCT13																									
1131	Bid Review & Approval	2	2	30OCT13	31OCT13																									
Concrete Paving Package																														
1141	Bid Package Issued to Printer from Davis Design	0	0	14OCT13																										
1151	Subcontractor Solicitations	12	12	14OCT13	29OCT13																									
1161	Subcontractor Bids Due	0	0		29OCT13																									
1171	Bid Review & Approval	2	2	30OCT13	31OCT13																									
Ground Improvement Package																														
1181	Bid Package Issued to Printer from Davis Design	0	0	09AUG13																										
1191	Subcontractor Solicitations	14	14	19AUG13	05SEP13																									
1201	Subcontractor Bids Due	0	0		05SEP13																									
1211	Bid Review & Approval	5	5	23SEP13	27SEP13																									
Precast Panel Package (Supply)																														
1231	Bid Package Issued to Printer from Davis Design	0	0	12SEP13																										
1241	Subcontractor Solicitations	11	11	17SEP13	01OCT13																									
1251	Subcontractor Bids Due	0	0		03OCT13																									
1261	Bid Review & Approval	2	2	09OCT13	10OCT13																									
Structural Steel Package(Supply)-no south office																														
1281	Bid Package Issued to Printer from Davis Design	0	0	12SEP13																										
1291	Subcontractor Solicitations	11	11	17SEP13	01OCT13																									
1301	Subcontractor Bids Due	0	0		03OCT13																									
1311	Bid Review & Approval	2	2	09OCT13	10OCT13																									

Start Date	22JUL13	 Early Bar
Finish Date	27JAN15	 Progress Bar
Data Date	22JUL13	
Run Date	23SEP13 15:49	 Critical Activity

BALD Sheet 1 of 4

Sampson Construction
Baldwin Filters-Distribution Cente
Classic Schedule Layout

Date	Revision	Checked	Approved

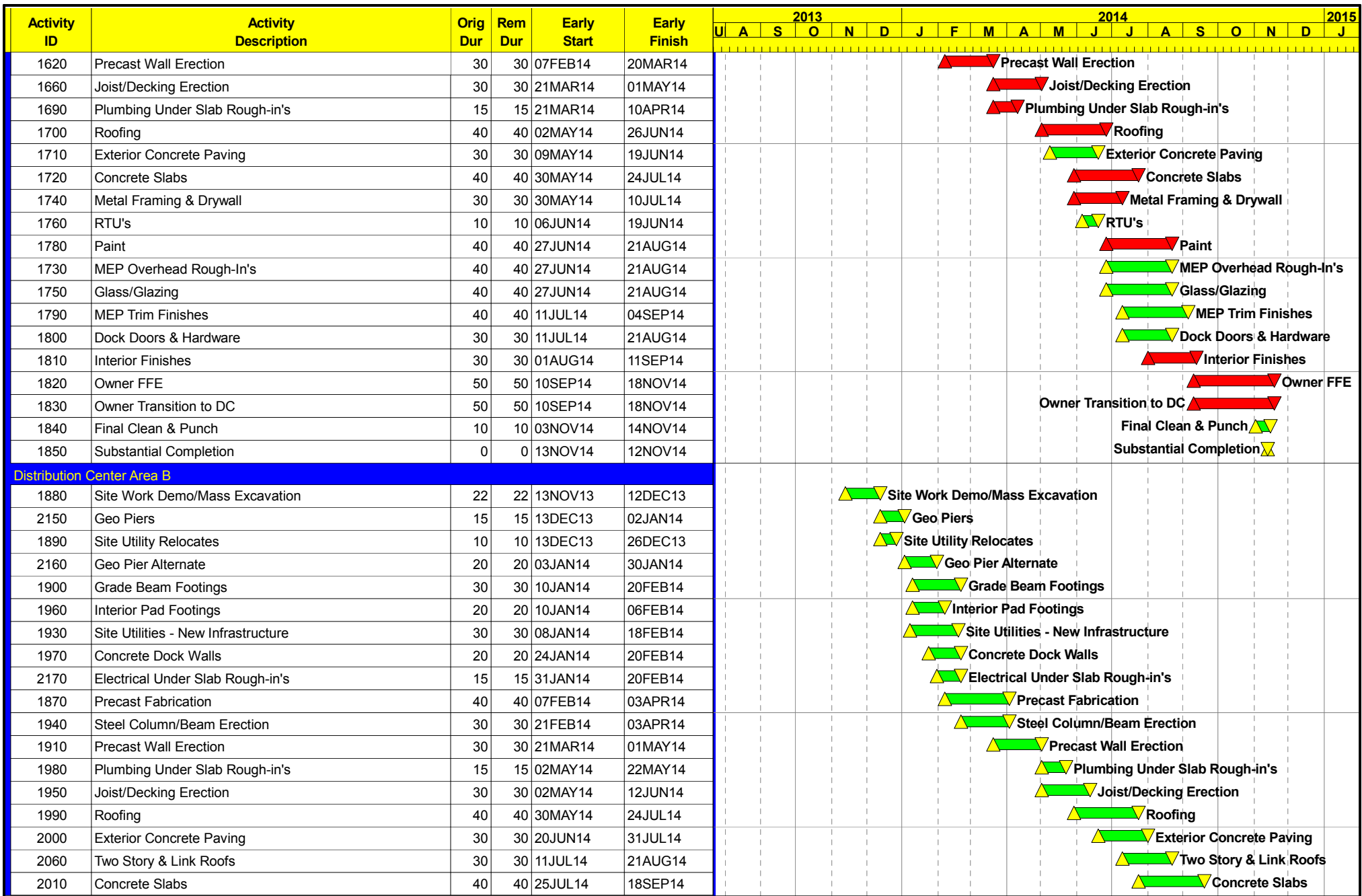
Activity ID	Activity Description	Orig Dur	Rem Dur	Early Start	Early Finish	2013												2014												2015
						2013					2014							2015												
						U	A	S	O	N	D	J	F	M	A	M	J	J	A	S	O	N	D	J						
Precast, Steel Erection, HVAC, Roofing Package																														
1331	Bid Package Issued to Printer from Davis Design	0	0	12SEP13																										
1341	Subcontractor Solicitations	11	11	17SEP13	01OCT13																									
1351	Subcontractor Bids Due	0	0		03OCT13																									
1361	Bid Review & Approval	2	2	09OCT13	10OCT13																									
Footing & CIP Wall Package																														
1381	Bid Package Issued to Printer from Davis Design	0	0	14OCT13																										
1391	Subcontractor Solicitations	10	10	16OCT13	29OCT13																									
1401	Subcontractor Bids Due	0	0		29OCT13																									
1411	Bid Review & Approval	2	2	30OCT13	31OCT13																									
Complete Bid Pkg (arch, struct, mep)																														
1451	Subcontractor Bids Due	0	0		29OCT13A																									
1431	Bid Package Issued to Printer from Davis Design	0	0	14OCT13																										
1441	Subcontractor Solicitations	10	10	16OCT13	29OCT13																									
1461	Bid Review & Approval	2	2	30OCT13	31OCT13																									
South Office Bid pkg-complete (arch, struc, mep)																														
1481	Bid Package Issued to Printer from Davis Design	0	0	18DEC13*																										
1491	Subcontractor Solicitations	20	20	20DEC13	16JAN14																									
1501	Subcontractor Bids Due	0	0		16JAN14																									
1511	Bid Review & Approval	8	8	17JAN14	28JAN14																									
Shipping & Receiving Office																														
1531	Bid Package Issued to Printer from Davis Design	0	0	18DEC13																										
1541	Subcontractor Solicitations	20	20	20DEC13	16JAN14																									
1551	Subcontractor Bids Due	0	0		16JAN14																									
1561	Bid Review & Approval	8	8	17JAN14	28JAN14																									
Distribution Center Area A																														
2180	Sampson Mobilization	5	5	01OCT13	07OCT13																									
1590	Site Work Demo/Mass Excavation	22	22	14OCT13	12NOV13																									
1860	Geo Piers	15	15	13NOV13	03DEC13																									
1600	Site Utility Relocates	10	10	13NOV13	26NOV13																									
1610	Grade Beam Footings	30	30	29NOV13	09JAN14																									
1670	Interior Pad Footings	20	20	29NOV13	26DEC13																									
1640	Site Utilities - New Infrastructure	30	30	27NOV13	07JAN14																									
1580	Precast Fabrication	40	40	13DEC13	06FEB14																									
1680	Concrete Dock Walls	20	20	13DEC13	09JAN14																									
1650	Steel Column/Beam Erection	30	30	10JAN14	20FEB14																									
1770	Electrical Under Slab Rough in	15	15	10JAN14	30JAN14																									

Start Date 22JUL13 Early Bar
Finish Date 27JAN15 Progress Bar
Data Date 22JUL13
Run Date 23SEP13 15:49 Critical Activity

BALD
Sampson Construction
Baldwin Filters-Distribution Center
Classic Schedule Layout

Sheet 2 of 4

Date	Revision	Checked	Approved



Start Date	22JUL13		Early Bar
Finish Date	27JAN15		Progress Bar
Data Date	22JUL13		
Run Date	23SEP13 15:49		Critical Activity

BALD
Sampson Construction
Baldwin Filters-Distribution Centre
Classic Schedule Layout

Date	Revision	Checked	Approved

