

Olsson Associates
Consulting Engineers
1111 Lincoln Mall
Lincoln, Nebraska 68508
August 27, 2013

ADDENDUM NO. 1

Lincoln Public Schools
Seacrest Field – Maintenance Parking Lot Expansion – Phase III
Lincoln, Nebraska - 2013
OA Project No. 011-2227

TO ALL WHO HAVE RECEIVED PLANS AND SPECIFICATIONS FOR THE REFERENCED PROJECT.

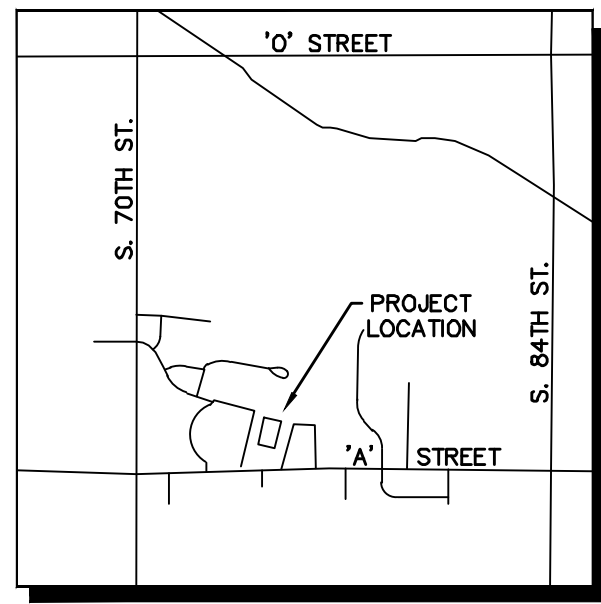
1. Revise the type and quantity of Rip-Rap Material.
 - A. See attached plan sheet 1 of 1.

Each Bidder must acknowledge receipt of all addenda in the space provided on the Bid Form.

LINCOLN PUBLIC SCHOOLS - SEACREST FIELD

MAINTENANCE PARKING LOT EXPANSION - PHASE III

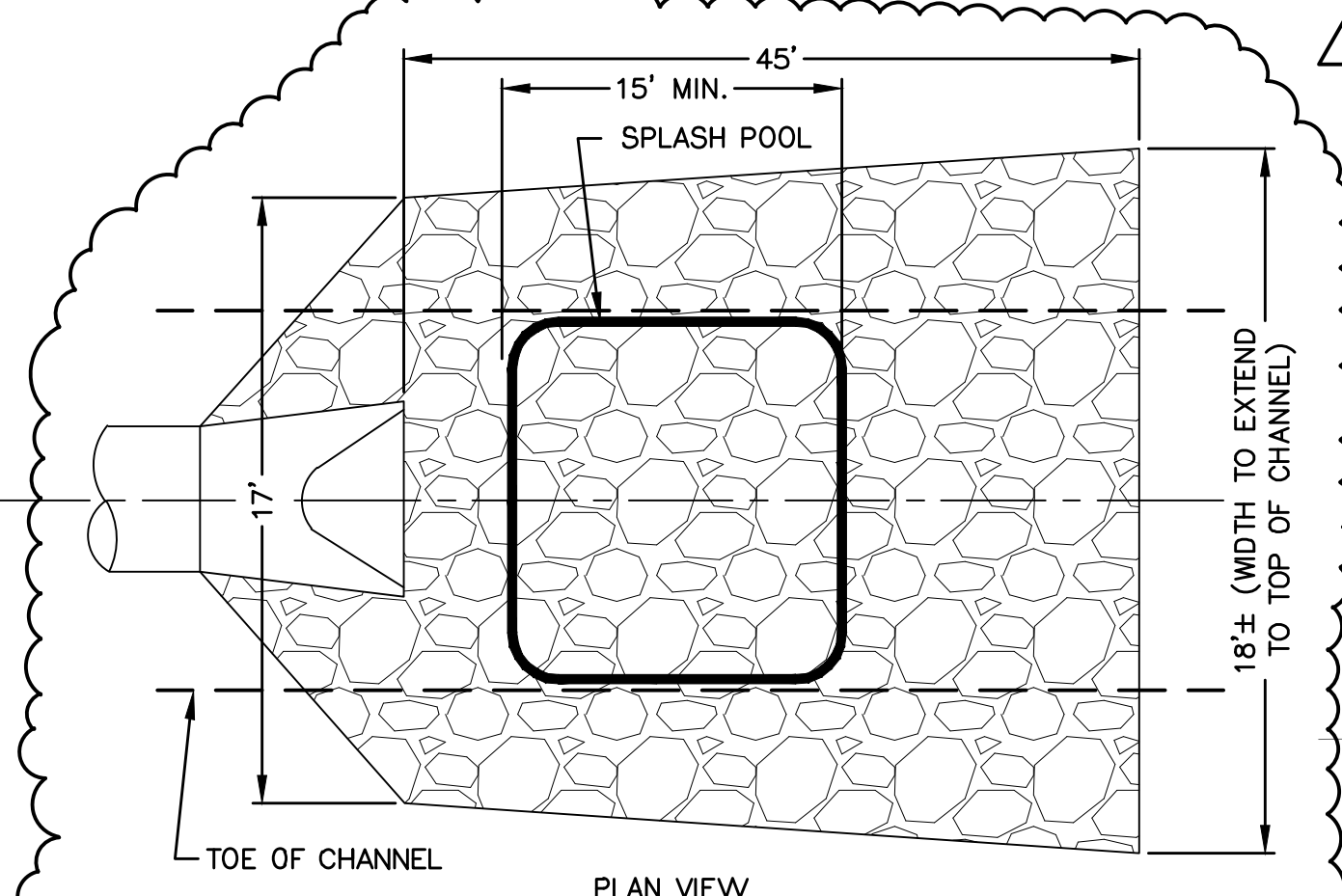
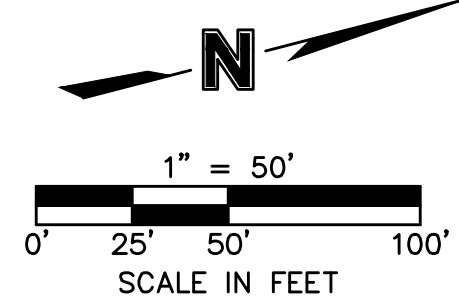
PUBLIC STORM SEWER IMPROVEMENTS



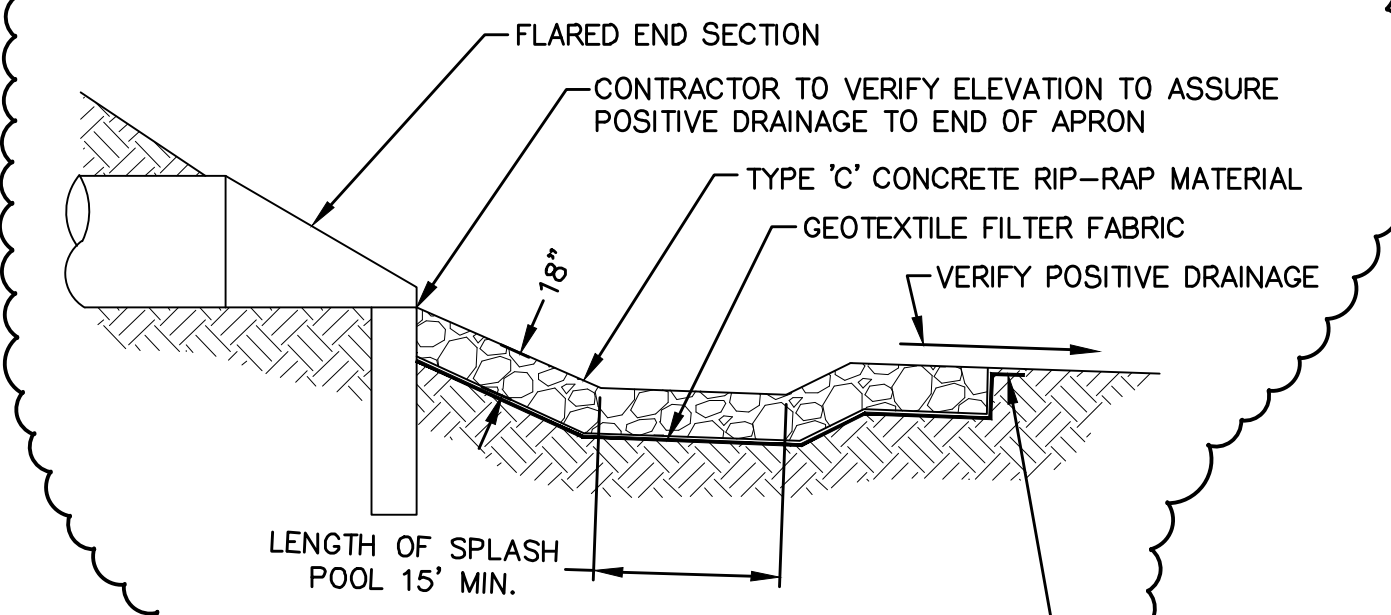
VICINITY MAP
NOT TO SCALE

BENCHMARKS

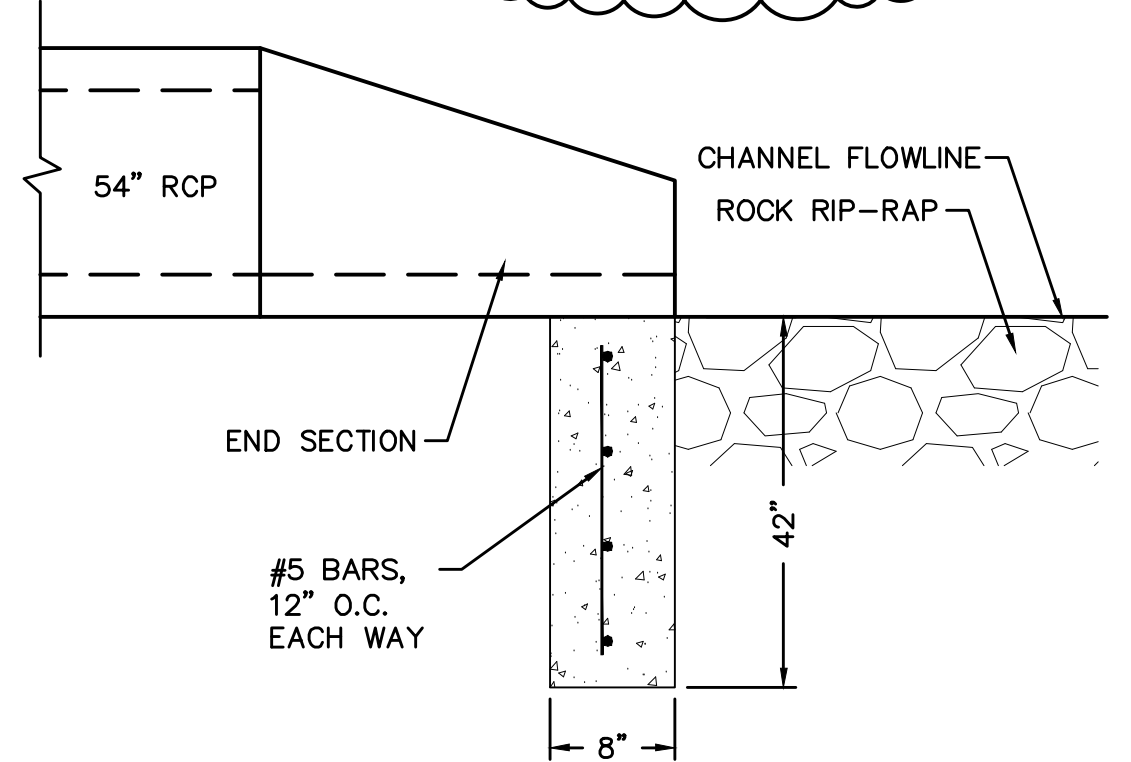
1. TAIL OF ARROW ON FIRE HYDRANT, NW CORNER OF W. BUILDING, (NORTH BUILDING). ELEV.=1258.27 (N.A.V.D. 1988)
2. 2" BRASS CAP, CITY BENCHMARK, N. SIDE OF 'A' STREET, E. SIDE OF DRIVE TO SEACREST FIELD, 1ST DRIVE W. OF REGENCY DRIVE, APPROX. 3' SE. OF N-S SIDEWALK, APPROX. 8.3' E. OF BACK OF CURB, APPROX. 17.5' N. OF BACK OF WALK. ELEV.=1278.19 (N.A.V.D. 1988)



PLAN VIEW

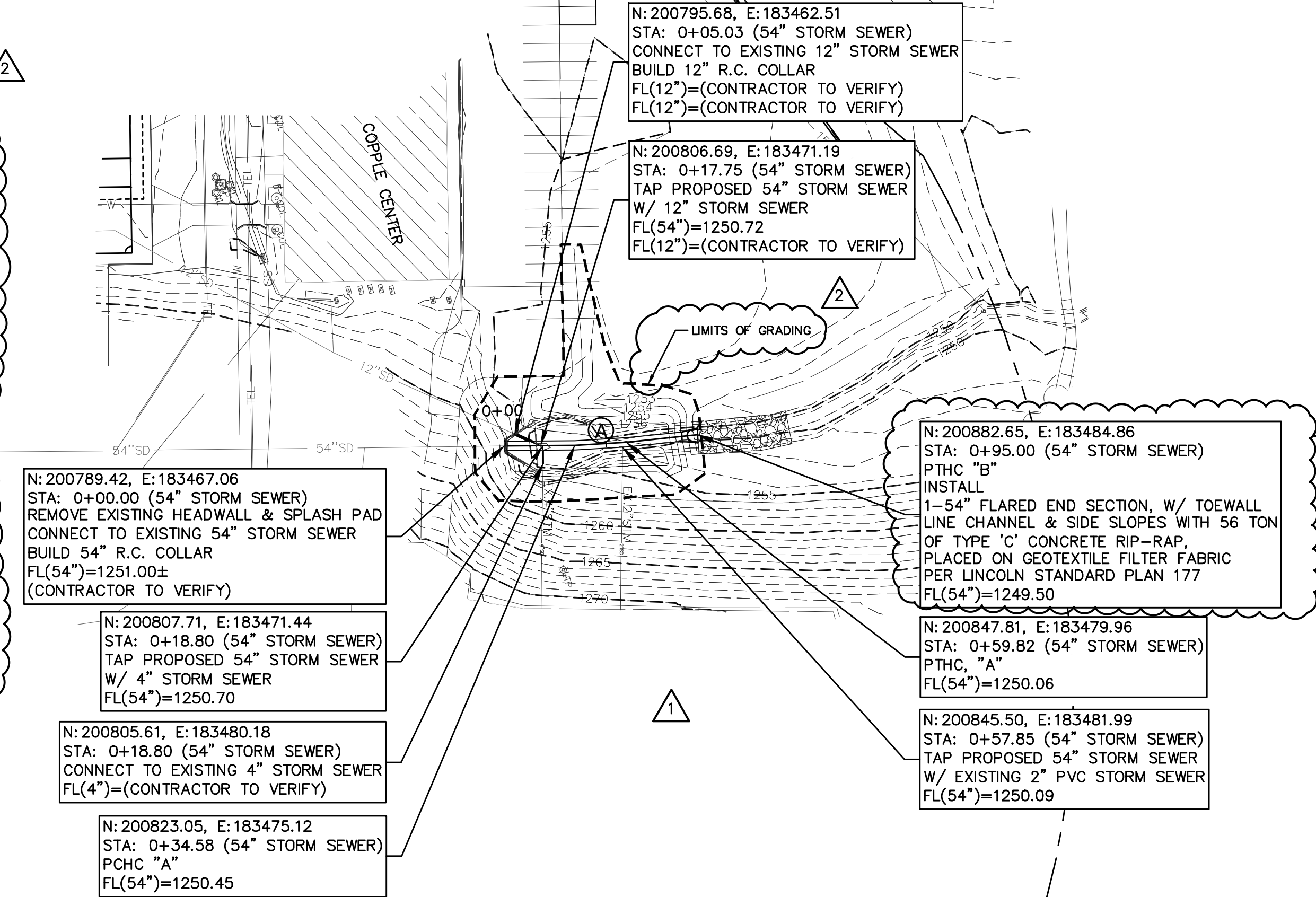


RIP-RAP DETAIL
NOT TO SCALE



FLARED END SECTION TOE WALL DETAIL
NOT TO SCALE

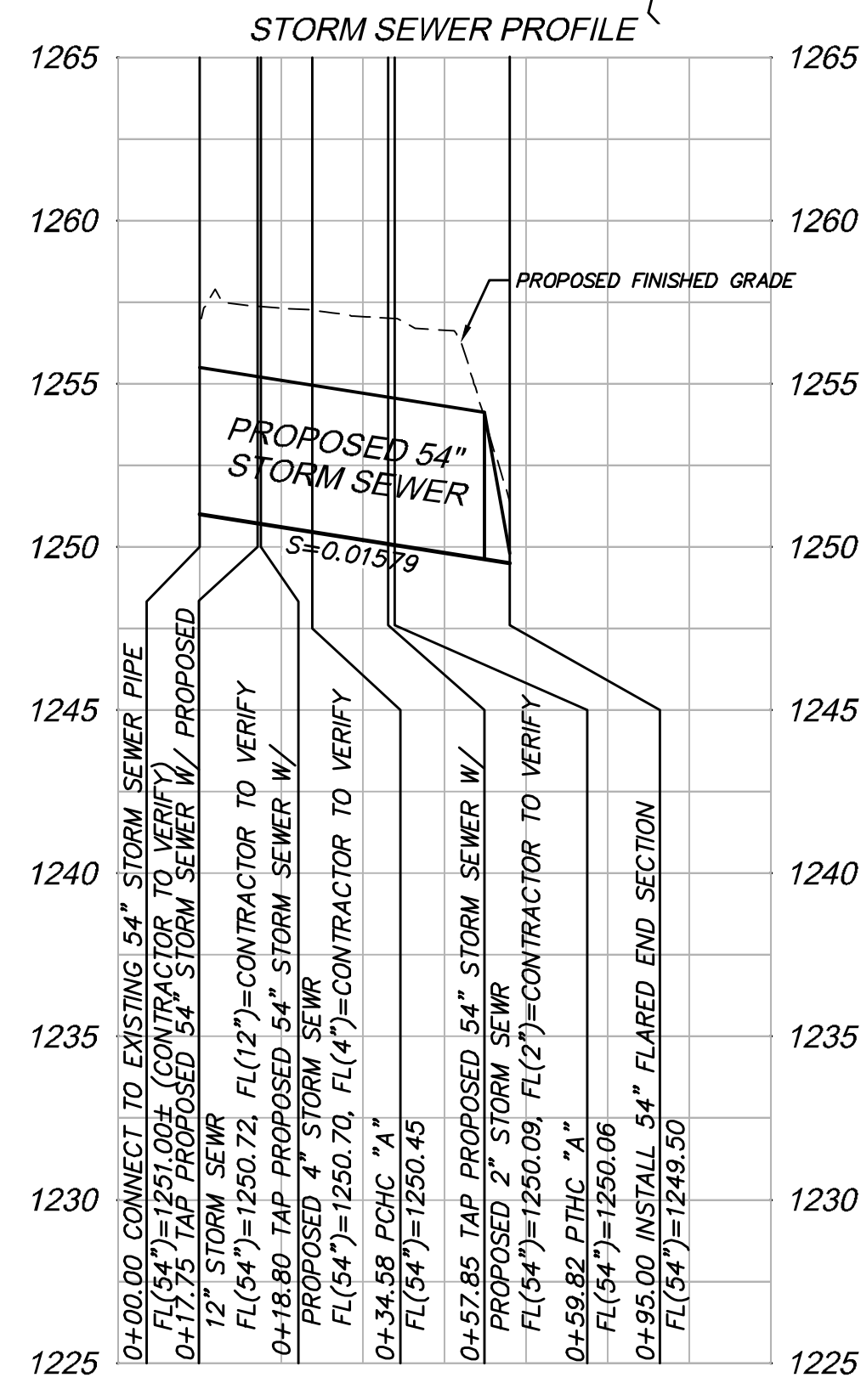
NOTE: DIAL BEFORE YOU DIG. CALL 1-800-331-5666 FOR LOCATION OF UNDERGROUND TELEPHONE, ELECTRIC, GAS MAINS, CABLE TELEVISION AND CITY OF LINCOLN UTILITIES.



- N:200789.42, E:183467.06
STA: 0+00.00 (54" STORM SEWER)
REMOVE EXISTING HEADWALL & SPLASH PAD
CONNECT TO EXISTING 54" STORM SEWER
BUILD 54" R.C. COLLAR
FL(54")=1251.00±
(CONTRACTOR TO VERIFY)
- N:200807.71, E:183471.44
STA: 0+18.80 (54" STORM SEWER)
TAP PROPOSED 54" STORM SEWER
W/ 4" STORM SEWER
FL(54")=1250.70
- N:200805.61, E:183480.18
STA: 0+18.80 (54" STORM SEWER)
CONNECT TO EXISTING 4" STORM SEWER
FL(4")=(CONTRACTOR TO VERIFY)
- N:200823.05, E:183475.12
STA: 0+34.58 (54" STORM SEWER)
PCHC "A"
FL(54")=1250.45
- N:200795.68, E:183462.51
STA: 0+05.03 (54" STORM SEWER)
CONNECT TO EXISTING 12" STORM SEWER
BUILD 12" R.C. COLLAR
FL(12")=(CONTRACTOR TO VERIFY)
FL(12")=(CONTRACTOR TO VERIFY)
- N:200806.69, E:183471.19
STA: 0+17.75 (54" STORM SEWER)
TAP PROPOSED 54" STORM SEWER
W/ 12" STORM SEWER
FL(54")=1250.72
FL(12")=(CONTRACTOR TO VERIFY)
- N:200882.65, E:183484.86
STA: 0+95.00 (54" STORM SEWER)
PTHC "B"
INSTALL
1-54" FLARED END SECTION, W/ TOEWALL
LINE CHANNEL & SIDE SLOPES WITH 56 TON
OF TYPE 'C' CONCRETE RIP-RAP,
PLACED ON GEOTEXTILE FILTER FABRIC
PER LINCOLN STANDARD PLAN 177
FL(54")=1249.50
- N:200847.81, E:183479.96
STA: 0+59.82 (54" STORM SEWER)
PTHC, "A"
FL(54")=1250.06
- N:200845.50, E:183481.99
STA: 0+57.85 (54" STORM SEWER)
TAP PROPOSED 54" STORM SEWER
W/ EXISTING 2" PVC STORM SEWER
FL(54")=1250.09

LEGEND

(AC)	AIR CONDITIONING UNIT
(AI)	AREA INLET
(B)	BOLLARD
(C)	COLUMN
(CP/BM)	CONTROL POINT/BENCHMARK
(FHT)	FIRE HYDRANT
(FP)	FLAG POLE
(GM)	GAS METER
(GI)	GRATE INLET
(IM)	IRRIGATION MANHOLE
(SC)	SECTION CORNER
(SB)	SPRINKLER BOX
(TR)	TELEPHONE RISER
(WM)	WATER MANHOLE
(YL)	YARD LIGHT
(CL)	CENTER LINE
(PL)	PROPERTY LINE
(SL)	SECTION LINE
(CLF)	CHAIN LINK FENCE
(SSL)	SANITARY SEWER LINE
(SSL)	STORM SEWER LINE
(WL)	WATER LINE
(UGM)	UNDERGROUND GAS MAIN
(UGP)	UNDERGROUND POWER
(UGP)	UNDERGROUND POWER
(UTL)	UNDERGROUND TELEPHONE LINE
(PC)	PROPOSED CONTOUR
(EC)	EXISTING CONTOUR



STORM SEWER PROFILE

PROPOSED FINISHED GRADE

PROPOSED 54" STORM SEWER

S=0.01579

0+00.00 CONNECT TO EXISTING 54" STORM SEWER PIPE
FL(54")=1251.00± (CONTRACTOR TO VERIFY)
0+17.75 TAP PROPOSED 54" STORM SEWER W/ PROPOSED 12" STORM SEWER
FL(54")=1250.72 FL(12")=(CONTRACTOR TO VERIFY)
0+18.80 TAP PROPOSED 54" STORM SEWER W/ PROPOSED 4" STORM SEWER
FL(54")=1250.70 FL(4")=(CONTRACTOR TO VERIFY)
0+34.58 PCHC "A"
FL(54")=1250.45
0+57.85 TAP PROPOSED 54" STORM SEWER W/ PROPOSED 2" STORM SEWER
FL(54")=1250.09 FL(2")=(CONTRACTOR TO VERIFY)
0+59.82 PTHC "A"
FL(54")=1250.06
0+95.00 INSTALL 54" FLARED END SECTION
FL(54")=1249.50

PROFILE SCALE
HORIZONTAL: 1"=50'
VERTICAL: 1"=5'

CURVE DATA

(A) Δ=4°49'11"
L=25.24'
R=300.00'
T=12.63'
CL=25.23'

SCHEDULE OF APPROXIMATE QUANTITIES

ITEM	UNIT	QUANTITY
54" R.C.P. STORM SEWER PIPE, CLASS (III)	LF	87
12" R.C.P. STORM SEWER PIPE, CLASS (III)	LF	14
4" PVC STORM SEWER PIPE, SCH. 40	LF	9
54" R.C. COLLAR	EA	1
12" R.C. COLLAR	EA	1
TAP PROPOSED 54" STORM SEWER	EA	3
54" R.C. FLARED END SECTION	EA	1
REMOVE EXISTING CONCRETE HEADWALL & SPLASHPAD	EA	1
TYPE 'C' RIP-RAP	TN	56
EARTHWORK MEASURED IN EMBANKMENT	CY	649

- #### GENERAL NOTES
1. OWNER IS RESPONSIBLE FOR REMOVING AND REPLACING PERIMETER FENCE NEAR AND AROUND PROJECT AREA. FENCING WILL ALSO BE REMOVED TO PROVIDE ACCESS TO WORK AREA WITHOUT TRAVELING OVER EXISTING CONCRETE PARKING LOT AREA.
 2. CONTRACTOR TO NOTIFY OWNER AND OLSSON ASSOCIATES 7 CALENDAR DAYS PRIOR TO COMMENCEMENT OF CONSTRUCTION.
 3. CONTRACTOR MUST KEEP EXISTING CHANNEL FREE OF ANY FILL MATERIAL OUTSIDE OF THE LIMITS OF GRADING SHOWN ON THIS PLAN.

1. CONTRACTOR TO PRESERVE ALL SURVEY CONTROL.
2. PRIOR TO MOVING OFF THE JOB THE CONTRACTOR SHALL NOTIFY THE ENGINEER AND REQUEST A FINAL WALK-THROUGH OF THE CONSTRUCTION SITE.
3. LOCATION AND ELEVATIONS OF IMPROVEMENTS TO BE MET (OR AVOIDED) BY WORK TO BE DONE SHALL BE CONFIRMED BY THE CONTRACTOR THROUGH FIELD EXPLORATIONS PRIOR TO CONSTRUCTION. CONTRACTOR SHALL REPORT TO THE DEVELOPER'S ENGINEER, CITY INSPECTOR, OR DEVELOPER'S ENGINEER FIELD REPRESENTATIVE ANY DISCREPANCIES BETWEEN HIS MEASUREMENTS AND THESE PLANS.
4. THE EXISTENCE AND LOCATION OF UNDERGROUND UTILITY PIPES AND STRUCTURES SHOWN ON THESE PLANS WERE OBTAINED BY A SEARCH OF AVAILABLE RECORDS TO THE BEST OF OUR KNOWLEDGE CONSTITUTES ALL KNOWN FACILITIES. HOWEVER, THE CONTRACTOR IS REQUIRED TO TAKE DUE PRECAUTIONARY MEASURES TO PROTECT ANY EXISTING UTILITIES OR STRUCTURES LOCATED AT THE WORK SITE. IT IS THE CONTRACTOR'S RESPONSIBILITY TO CONTACT UNDERGROUND SERVICE ALERT @ 1-800-331-5666 IN ADVANCE OF ANY EXCAVATION FOR THE MARK-OUT OF THE LOCATION OF UTILITIES AND NOTIFICATION OF COMMENCEMENT OF WORK.
5. BEFORE EXCAVATING FOR THIS CONTRACT, THE CONTRACTOR SHALL FIELD VERIFY LOCATION OF UNDERGROUND UTILITIES. CONTRACTOR SHALL MAKE EXPLORATION EXCAVATIONS AND LOCATE EXISTING UNDERGROUND UTILITIES SUFFICIENTLY AHEAD OF CONSTRUCTION TO PERMIT REVISIONS TO PLAN IF REVISIONS ARE NECESSARY BECAUSE OF ACTUAL LOCATION OF EXISTING FACILITIES.
6. CONTRACTOR IS REQUIRED TO TAKE PRECAUTIONARY MEASURES TO PROTECT THE UTILITY LINES SHOWN AND ANY OTHER EXISTING LINES NOT OF RECORD OR NOT SHOWN ON THESE PLANS.
7. THE CONTRACTOR SHALL USE CAUTION AROUND ANY EXISTING UTILITIES OR IMPROVEMENTS LOCATED ON SITE. HE SHALL BE RESPONSIBLE FOR THE REPAIRS OF SUCH STRUCTURES WHEN BROKEN OR OTHERWISE DAMAGED BY THE NEW CONSTRUCTION.
8. SPOIL MATERIAL SHALL BE DEPOSITED WITHIN THE SITE DEVELOPMENT BOUNDARY IN AREAS DESIGNATED BY THE DEVELOPER'S ENGINEER. THE MATERIAL SHALL BE STOCKPILED OR SPREAD AS DIRECTED BY THE ENGINEER. NO SEPARATE PAYMENT SHALL BE MADE FOR DISPOSAL OF SPOIL MATERIAL; IT SHALL BE CONSIDERED SUBSIDIARY TO THE PRICE BID.
9. A PORTABLE RESTROOM FACILITY WILL BE REQUIRED ON-SITE DURING CONSTRUCTION ACTIVITIES.
10. ANY ON-SITE FUELING WILL COMPLY WITH LOCAL, STATE, AND FEDERAL REQUIREMENTS.
11. PIPE BEDDING IS SUBSIDIARY TO THE COST OF STORM SEWER PIPE.

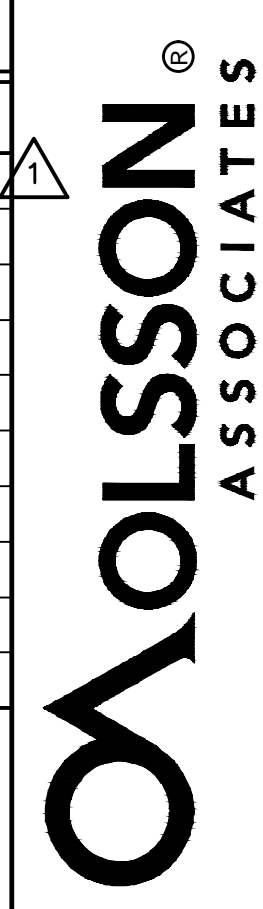
- #### EO STORM SEWER NOTES
1. FOR DETAILS OF R.C. COLLARS, R.C. ELBOWS, AND PLUGS, SEE LINCOLN STANDARD PLAN - 150.
 2. FOR DETAILS OF PIPE BEDDING, SEE LINCOLN STANDARD PLAN - 185.
 3. FOR DETAILS OF STORM SEWER CONSTRUCTION, SEE STANDARD SPECIFICATION, CHAPTER 21, 2011 EDITION, CITY OF LINCOLN, NEBRASKA. ALL STANDARD SPECIFICATIONS AND ADDENDA SHALL APPLY.
 4. ALL STATIONING AND DIMENSIONS ARE TO BE CENTERLINE OF VAULT UNLESS OTHERWISE NOTED.

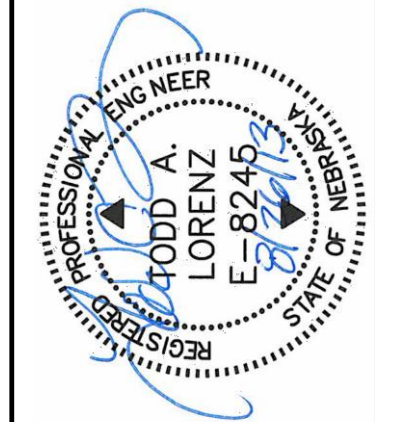
AUTHORIZED FOR CONSTRUCTION

CITY ENGINEER'S OFFICE

I HEREBY CERTIFY THAT THESE PLANS WERE PREPARED BY ME OR UNDER MY DIRECT SUPERVISION AND THAT I AM A REGISTERED PROFESSIONAL ENGINEER UNDER THE LAWS OF THE STATE OF NEBRASKA. THESE PLANS MEET THE REQUIREMENTS OF THE CITY ENGINEER'S OFFICE DESIGN REQUIREMENTS.

TODD A. LORENZ





1111 Lincoln Mall, Suite 111
P.O. Box 64608
Lincoln, NE 68501-4608

TEL: 402.474.8311
FAX: 402.474.5160
www.olssonassociates.com

REV. NO.	DATE	REVISIONS DESCRIPTION
2	8/26/13	REVISED OUTLET PROTECTION

STORM SEWER IMPROVEMENTS PLAN AND PROFILE SHEET

E.O.#85841

T.C.#802079

2013

drawn by: BFB

checked by: TAL

approved by: TAL

QA/QC by: TAL

project no.: 011-2227

drawing no.: 03.11.13

SHEET 1 of 1

DWG: F:\Projects\011-2227\LDVP\Final_Plans\112227_STMPL.dwg
 DATE: Aug 26, 2013 2:26pm
 USER: bbartek
 XREFS: 112227_PBASE-PH3 112227_XBASE-PH3 092450_STOPO_ALL