

796-001-12

### **ADDENDUM NO. 3**

The Architect/Engineer issues this addendum, applicable to the above named project, to all known Contractors before receipt of proposal.

This addendum includes Item Number 3-1 thru 3-2. This addendum item shall be fully incorporated into the Bidding/Contract Documents and have the same force and effect as though originally included.

The Bidder shall acknowledge receipt of this Addendum No. 3 on the Bid Proposal Form in the place provided.

#### **FOODSERVICE**

**Item 3-1:      The following Item has been discontinued:**

Item 310 – Hobart Slicer Model 610

In its place, please provide Hobart 'Edge' 1' Slicer, 120/60/1

**Item 3-2:      The following Item has been discontinued:**

Item 801 – Lakeside Utility Cart, Model 2000.

In its place, please provide Carlisle UC3031524 Utility Cart, quantity as originally specified.

END OF ADDENDUM NO. 3

**HOBART**701 S Ridge Avenue, Troy, OH 45374  
1-888-4HOBART • www.hobartcorp.com**THE EDGE™  
SLICER****HOBART****STANDARD FEATURES**

- 1/3 H.P. Knife Drive Motor
- Gauge Plate Interlock
- Carriage System Interlock
- Removable Carriage System
- Contoured Carbon Steel Knife
- Top Mounted Borazon Stone Sharpener
- Poly V-Belt Drive System
- Patented Belt Tensioner
- Sanitary Anodized Aluminum Base
- Permanently Mounted Ring Guard
- Cleaning Leg
- Removable Product Deflector
- Anodized Aluminum Carriage and Knife Cover
- Rear Mounted Meat Grip

**MODEL**

- The Edge™ Slicer – 120/60/1, Manual Slicer and 12" Knife

Specifications, Details and Dimensions on Inside and Back.

**THE EDGE™  
SLICER**

## SOLUTIONS / BENEFITS

### 1/3 H.P. Knife Drive Motor

Durability, performance

- Reserve power runs at 370 rpm for optimum results

### Gauge Plate Interlock

Ease of cleaning

- Gauge plate must be closed to remove carriage for cleaning and cannot be opened when carriage is removed
- Protects knife edge during cleaning procedures

### Carriage System Interlock

- Will not remove if gauge plate indicator is not closed

### Removable Carriage System

Improves sanitation

- Removable for complete cleaning and sanitation procedures

### Contoured Carbon Steel Knife

Reduced cost of ownership, improved yield

- Thin edge design improves yield

### Top Mounted Borazon Stone Sharpener

Ease of use, improved sanitation

- Single action sharpens and hones in just five seconds
- Removable and submersible for easy cleaning and sanitation

### Poly V-Belt Drive System

Performance, durability, reduced maintenance

- Design extends belt life while producing optimal slicing results
- Quieter operating slicer
- More economical for service and repairs with reduced parts and reduced service time

### Sanitary Anodized Aluminum Base

Improved sanitation, labor savings

- One piece base protects against possible growth of bacteria
- No cracks/crevices or bolt holes where product can lodge and bacteria may grow
- Easy cleanup and durable finish

### Permanently Mounted Ring Guard

Protection

- Protects knife during operation and cleaning

### Cleaning Leg

Improved sanitation, ease of use

- Props machine for easy cleaning underneath slicer

### Removable Rear Deflector

Improved sanitation, ease of use

- Allows access for thorough cleaning
- No tools required means easy removal during cleaning

### Anodized Aluminum Carriage and Knife Cover

Improved sanitation, durability

- Maximum sanitation with minimum cleanup time
- Corrosion resistant, impact resistant



701 S Ridge Avenue, Troy, OH 45374  
1-888-4HOBART • www.hobartcorp.com

## THE EDGE™ SLICER

### SPECIFICATIONS

**KNIFE MOTOR:** 1/3 H.P., permanently lubricated ball bearings. Single phase capacitor-start, induction run. 3.5 AMP

**GAUGE PLATE INTERLOCK:** Gauge plate interlock protects knife edge when indicator is closed.

**CARRIAGE SYSTEM INTERLOCK:** Carriage will not remove if gauge plate not closed.

**REMOVABLE CARRIAGE SYSTEM:** Positive angle carriage design enables operator to slice without manual feed. The anodized aluminum carriage system is removable for thorough cleaning and sanitation procedures. The carriage has 9 3/4" manual travel.

**CONTOURED CARBON STEEL KNIFE:** Carbon steel, 1 1/4" diameter with sanitary hub. Knife is protected by a permanently mounted ring guard. The anodized aluminum knife cover provides easy access for cleaning. Gauge plate protects knife edge when indicator is closed.

**TOP MOUNTED BORAZON STONE SHARPENER:** One lever operation utilizing two Borazon stones to sharpen and hone in five seconds. Removable and top mounted. When sharpener is removed for cleaning, knife edge is shielded.

**POLY V-BELT DRIVE SYSTEM:** Knife is driven by a Poly V belt and runs at 370 rpm for optimal performance. Aluminum knife shaft pulley and steel motor pulley.

**SANITARY ANODIZED ALUMINUM BASE:** One-piece base protects against possible growth of bacteria. All surfaces are durable and smooth, presenting no holes or crevices in which food can lodge. Easy clean-up and durable finish to withstand harsh cleaning products.

**PERMANENTLY MOUNTED RING GUARD:** Permanently mounted ring guard with integrated product deflector protects knife during operation and cleaning.

**CLEANING LEG:** Cleaning leg supports the slicer in tilted position for cleaning beneath the machine.

**REMOVABLE REAR DEFLECTOR:** No tools are required for removal of the deflector for thorough cleaning of the slicer.

**FINISH:** Anodized aluminum carriage, gauge plate, knife cover and base.

**MEAT GRIP:** Rear mounted grip is anodized aluminum. Swings out of way when not in use.

**ELECTRICAL SPECIFICATIONS:** 120/60/1 – UL Listed.

**SWITCH:** Moisture protected toggle type.

**CORD & PLUG:** 6-foot, three-wire power supply cord and plug.

**CAPACITY:** The carriage will take food up to 7 1/4" in width or 7 3/4" in diameter.

**GAUGE PLATE:** Gauge plate is a heavy anodized aluminum casting with ribbed face for smooth feeding. Adjustable to cut any thickness of slice up to 5/8".

**WARRANTY:** All parts and service coverage for one year including knife.

**WEIGHT:** Shipping 83 lbs., Net 63 lbs.

# THE EDGE™ SLICER

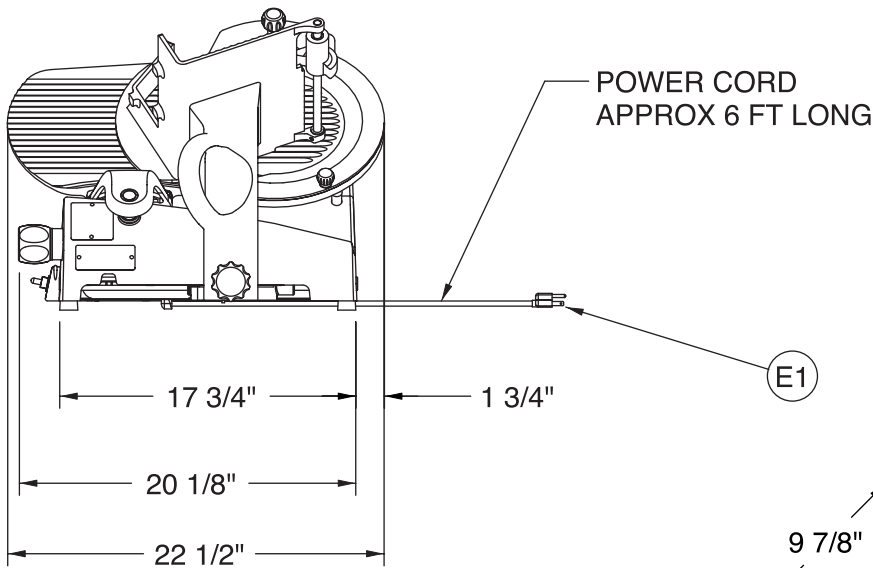
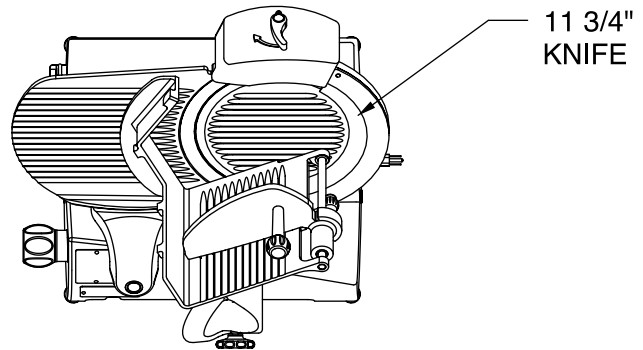


701 S Ridge Avenue, Troy, OH 45374  
1-888-4HOBART • www.hobartcorp.com

## DETAILS AND DIMENSIONS

### LEGEND

E1- ELECTRICAL CONNECTION, APPROX 1" ABOVE COUNTER TOP

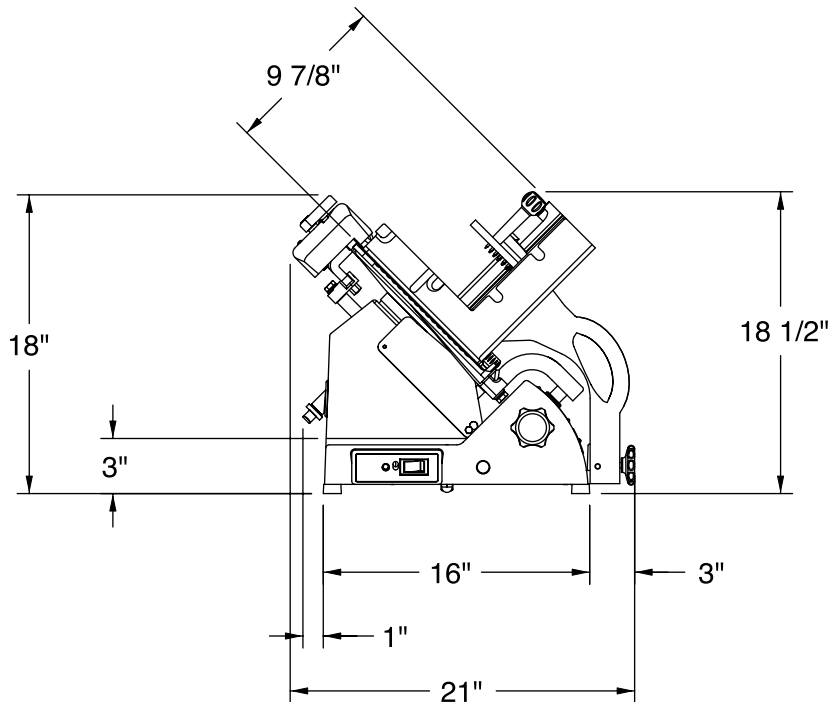


### AVAILABLE ELECTRICAL CONFIGURATIONS

120v, 60Hz, 1 PH, 3.5 amps

### WARNING

ELECTRICAL AND GROUNDING CONNECTIONS  
MUST COMPLY WITH THE APPLICABLE PORTIONS  
OF THE NATIONAL ELECTRICAL CODE AND/OR  
OTHER LOCAL ELECTRICAL CODES



As continued product improvement is a policy of Hobart, specifications are subject to change without notice.



# UC3031524 - 3 Shelf Stainless Steel Utility Cart 300 lb Capacity 15.5 x 24"W - Stainless Steel



## Details

Item #

**UC3031524**

Product #

**UC3031524**

Color

**Stainless Steel**



Case Pack

**1 ea**

Each UPC

**077838829127**

Case UPC

**10077838829124**

Invoice Description

**UTILITY CART 300#, 3 SHELF,SS**



## Features

- Utility carts are constructed of heavy gauge stainless steel for superior strength and durability
- Easy to clean tig welded construction provides added durability as compared to other, spot welded utility carts
- Available in 300lb, 500lb, and 700lb capacities; Knock-down version available in 400lb capacity
- Non-marking soft rubber bumpers prevent scratches and scuffs on walls

## Tech Specs

	<u>US</u>	<u>Metric</u>
<b>Length</b>	24.00 in	60.96 cm
<b>Width</b>	15.50 in	39.37 cm
<b>Height</b>	36.00 in	91.44 cm
<b>Shelf Clearance</b>	11.00 in	27.94 cm
<b>Material</b>	18-10 Stainless	
<b>Country of Origin</b>	Mexico	
<b>Harmonized Code</b>	940320.0030	
<b>Case Weight</b>	37.00 lb	16.78 kg
<b>Case Cube</b>	13.70 ft3	0.39 m3
<b>Case Length</b>	32.00 in	81.28 cm
<b>Case Width</b>	20.00 in	50.80 cm
<b>Case Height</b>	37.00 in	93.98 cm
<b>Pallet Case Qty</b>	2	
<b>Pallet Tier</b>	2	
<b>Pallet High</b>	1	