

**ADDENDUM #1**  
**CENTRAL COMMUNITY COLLEGE**  
**Howard Building Remodel**  
**HASTINGS, NEBRASKA**  
**1322**

Wilkins Hinrichs Stober Architects, L.L.C.  
2908 West 39<sup>th</sup> Street, Suite A  
Kearney, Nebraska 68845  
308-237-5787

Date Issued: May 30, 2013

Bid Date: June 4, 2013

TO ALL BID DOCUMENT HOLDERS OF RECORD:

Acknowledge receipt of this addendum by inserting its number in the space provided on the BID FORM. Failure to do so may subject Bidder to disqualification. This Addendum forms a part of the BIDDING DOCUMENTS and modifies them as follows.

- 
- Addendum #1 - #1      SPECIFICATION SECTION 01 10000 SUMMARY 1.5 – WORK SEQUENCE**  
Change Substantial Completion – Punch List date to read, “September 24, 2013: Substantial Completion – Punch List” and Final Completion date to read, “October 1, 2013: Final Completion” in lieu of “December 13, 2013: Substantial Completion – Punch List” and “December 20, 2013: Final Completion”.
- Addendum #1 - #2      SPECIFICATION SECTION 22 4000 – PLUMBING FIXTURES**  
1. Add Wall Cleanout (WCO). See attached specification sheet.
- Addendum #1 - #3      SPECIFICATION SECTION 26 8050 – VISUAL NURSE CALL SYSTEMS**  
1. Paragraph 2.1.A. Add “2. Subject to compliance with requirements, Cornell by Electronic Systems is also an acceptable manufacturer”.
- Addendum #1 - #4      SPECIFICATION SECTION 26 8080 – TELECOMMUNICATIONS AND CATV SYSTEMS**  
1. Paragraph 2.7. Modify rack to 4-post style rack to accommodate video surveillance equipment. Adjust rack model numbers and model numbers of rack accessories accordingly.  
2. Paragraph 1.8.A. Add “4. Coordinate with video surveillance installation, intent is to mount video surveillance equipment in same rack as telecommunications equipment”.
- Addendum #1 - #5      SPECIFICATION SECTION 26 8090 – VIDEO SURVEILLANCE**  
1. Paragraph 2.4.B, delete and substitute “Provide internal hard disk storage with capacity to record camera images with 50% duty cycle for thirty (30) days. Allow capacity to increase number of cameras in future remodel phases to twenty-four (24). In no case shall storage capacity be less than 5.0 TB”.  
2. Paragraph 2.3.B, delete and substitute “Ports: Twenty-four (24) minimum”.  
3. Paragraph 2.4. Add “D. Local Monitor: Provide 19-inch color monitor display, rack mounted”.  
4. Paragraph 2.1. Add “D. Provide Avigilon control center software, Enterprise edition”.
- Addendum #1 - #6      SHEET AD1.0 – DEMOLITION FLOOR PLANS 1/AD1.0**  
Under demolition keyed note 17 change note to read: “Remove and replace only adequate amount of concrete to cap all needed underslab piping V.I.F. – see also MEP sheets.”

- Addendum #1 - #7 SHEET AD1.0 – DEMOLITION FLOOR PLANS 1/AD1.0**  
Add new demolition keyed note 19 to read: “Remove and replace existing concrete slab to accommodate new sanitary line V.I.F. amount of concrete and underslab work needed to complete work – see MEP sheets for more information.”
- Addendum #1 - #8 SHEET AD1.0 – DEMOLITION FLOOR PLANS**  
See attached supplemental drawings A1 and A2 for additional concrete needing removed and replaced to accommodate new sanitary line.
- Addendum #1 - #9 SHEET A2.0 – ENLARGED FLOOR PLANS 1/A2.0**  
Under the tag reading Nursing Classroom 105 change note to read: “Install +/- ½” Cast Underlayment throughout entire construction area to EL. 100'-0”. V.I.F. amount of area (approximately 2,300 sf)” in lieu of “Install +/- ½” cast underlayment throughout entire construction area to level floor (approximately 1,100 sf).”
- Addendum #1 - #10 SHEET A3.0 – REFLECTED CEILING PLAN 1/A3.0**  
Add note under Industrial Technology tag to read, “Existing ACP to be suspended and maintained to existing ceiling height. Additional patching and repairing may be required to accommodate mechanical and electrical demolition – see MEP sheets.”
- Addendum #1 - #11 SHEET A3.0 – REFLECTED CEILING PLAN 1/A3.0**  
In Nursing Classroom 105 on the west side near the projector change the note to read, “Recessed electric screen provided by A/V contractor installed by A/V contractor - see electrical and A/V sheets” in lieu of “Recessed electric screen provided by A/V contractor installed by general contractor – see electrical and A/V sheets.”
- Addendum #1 - #12 SHEET A9.1 – INTERIOR ELEVATIONS 6/A9.1 BED DOCKER DETAIL**  
Under notation reference change note to read, “E2 = See electrical for specific requirements” and “E4 = See electrical for specific requirements” in lieu of “E2 = Duplex receptacle, 8300 red, 20A, 125V, H.G.; normal power” and note “E4 = Duplex receptacle, 8300 red, 20A, 125V, H.G.; emer. power.”
- Addendum #1 - #13 SHEET MH1.1 HVAC PLAN – GROUND FLOOR**  
1. Locate Temperature Control Panel (TCP-1) in Telecommunications 125. Coordinate location with all trades.
- Addendum #1 - #14 SHEET PL1.0 PLUMBING PLAN - FOUNDATION**  
1. See attached sketches, P-SK-1 and P-SK-2, for new sanitary piping.
- Addendum #1 - #15 SHEET FX1.1 FIRE PROTECTION PLAN – GROUND FLOOR**  
1. Keynote #5. Add “As part of a future building remodel, a 6” fire main will be provided to serve the entire building’s fire sprinkler system. This fire main will be provided from a tap of the existing 8” looped main that is located between this facility and Merrick and routes parallel to Merrick.”
- Addendum #1 - #16 SHEET EL1.1 LIGHTING PLAN – GROUND FLOOR**  
1. Keynote #3. Add “Install Crestron occupancy sensors Nursing Classroom 105 furnished with the A/V package”.
- Addendum #1 - #17 SHEET EP1.1 POWER AND TELECOMMUNICATIONS OUTLET PLAN – GROUND FLOOR**  
1. Telecommunications Rm 125. Connect Temperature Control Panel (TCP-1) to 120V power circuit A-23.

**Addendum #1 - #18 SHEET EY1.1 SPECIAL SYSTEMS PLAN – GROUND FLOOR**

1. Add general note: "Provide Category 6 telecommunications connection from each video surveillance camera and homerun back to video surveillance network switch in Telecommunications Rm 125. Comply with Section 26 8080 Telecommunications and CATV Systems for Category 6 connections."
2. Add Category 6 telecommunications connection to Temperature Control Panel (TCP-1) located in Telecommunications Rm 125. Comply with Section 26 8080 Telecommunications and CATV Systems for Category 6 connections.
3. Add rough-in for future communications cabling to gas meter located on southeast corner of building, see Sheet PL1.1 for gas meter location. Provide cast FS style box with cast weatherproof cover on exterior of building adjacent to gas meter. Route 1/2-inch conduit concealed inside building interior back to Temperature Control Panel (TCP-1) located in Telecommunications Rm 125. Provide pull string in conduit.

**Addendum #1 - #19 SHEET E5.1 ELECTRICAL DETAILS AND RISER DIAGRAMS**

1. Typical Low Voltage Rough-In Detail. Add note "One (1) 1-1/4 inch conduit stubbed concealed in wall where telecommunications cables exceed four (4) at one location".

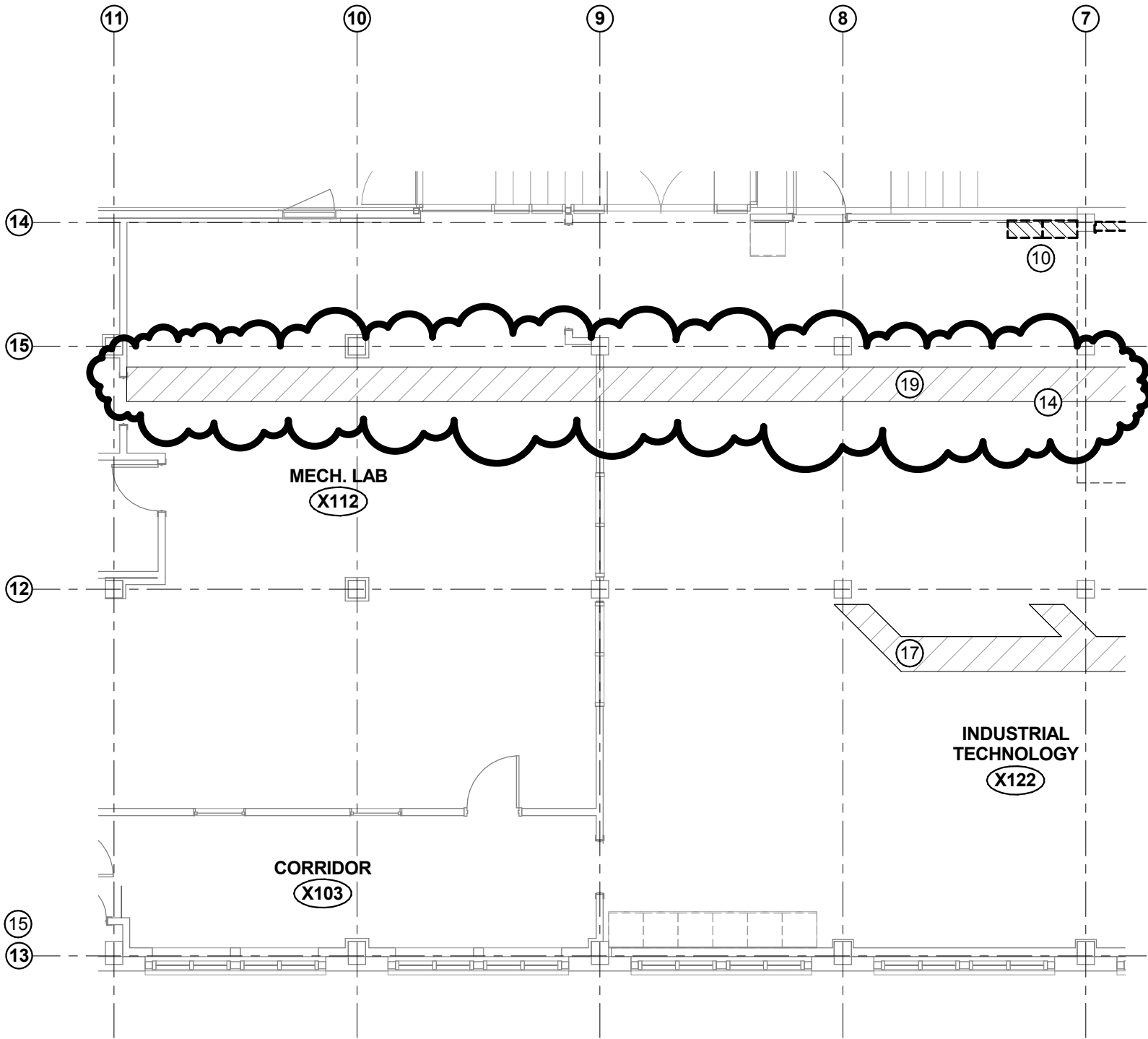
**GENERALS**

Hampton Construction, Lincoln	402-489-8858	402-489-9287
JLC Incorporation, York	402-362-3339	
Farris Construction, Hastings	402-462-8732	402-462-8801
Barry Larson & Son, Omaha	402-571-3838	402-571-3939
Hausmann Construction, Lincoln	402-438-3230	402-438-3235
Lacy Construction, Grand Island	308-384-2866	308-384-2883
Central Contracting, Kearney	308-234-2421	308-237-4767

**PRE-BID ATTENDEES**

Hampton Construction, Doug Kuntis	402-610-1558
Farris Construction, James Farris	402-462-8732
JLC Inc., Ken Jensen	402-362-3339
KT Heating & Air, Jim Batenhorst	402-463-1794
Bamford Inc, Roger Scheides	308-237-2157
Protex Central, Tom Reiber	402-306-4639
Kelly Electric, Dennis Macaughlin	308-234-2822
Kelly Electric, Jerry Sklenas	308-234-2822
Barry Larson & Son, Kirk Larson	402-571-6064
Hausmann Constr, Dan Clement	308-384-1690
Lacy Construction, Chris Wissing	308-390-8565
Anderson Bros., Lewis Yoseph	308-236-6437
Rutts Heating & Air, Regg Rutt	402-462-4883
Central Contracting, Steve Lentell	308-234-2421

[kirk@blsomaha.com](mailto:kirk@blsomaha.com)  
[danc@hausmannconstruction.com](mailto:danc@hausmannconstruction.com)  
[chrisw@lacygc.com](mailto:chrisw@lacygc.com)  
[contact@andersonbros.com](mailto:contact@andersonbros.com)  
[rutt@ruttsheating.com](mailto:rutt@ruttsheating.com)  
[slentell@centralcontracting.net](mailto:slentell@centralcontracting.net)



1  
A1

## DEMOLITION FLOOR PLAN - FIRST FLOOR

SCALE: 1/8" = 1'-0"

Wilkins  
Hinrichs  
Stober  
Architects, L.L.C.



Central Community College - Hastings

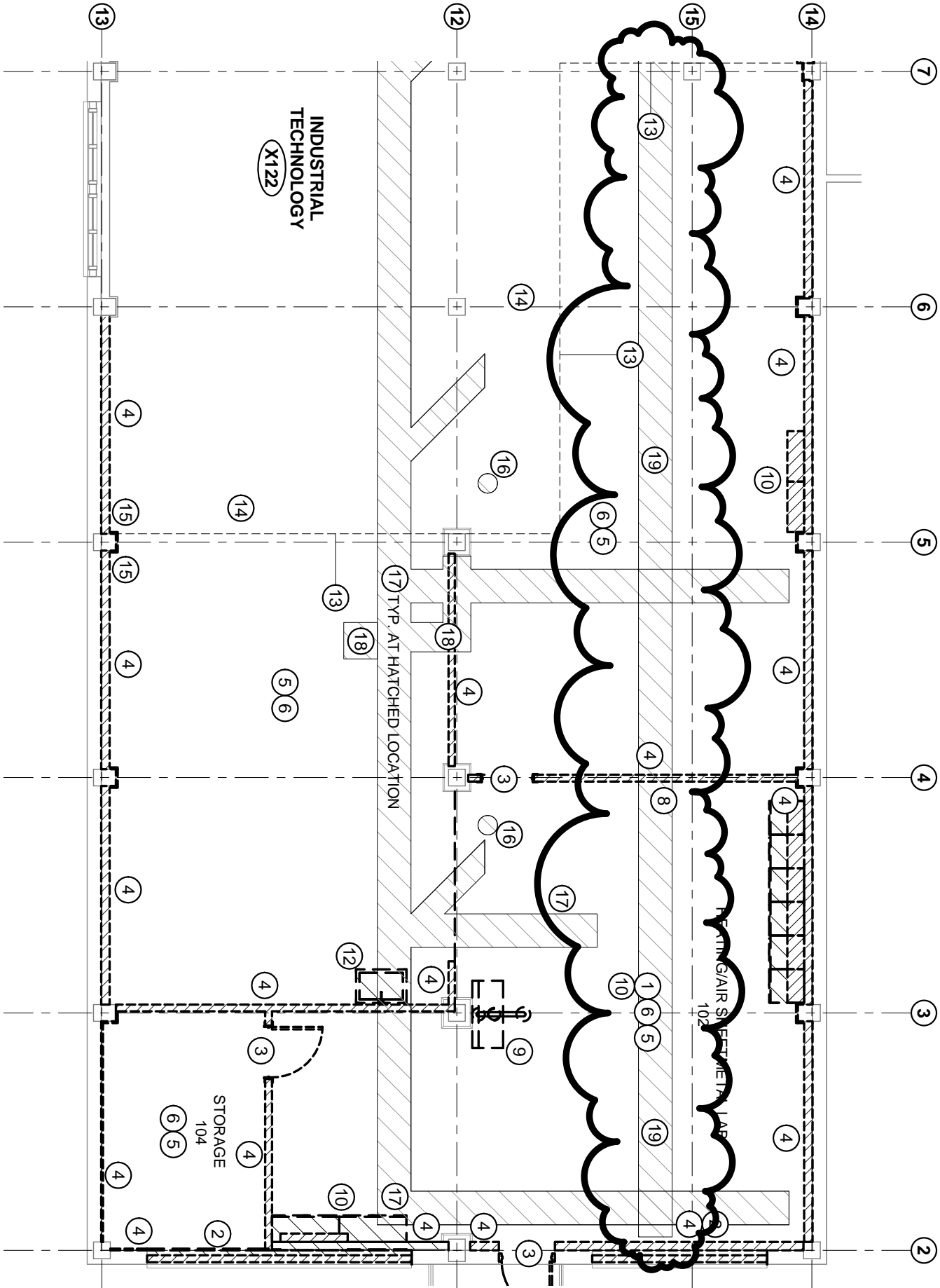
Howard Building Remodel

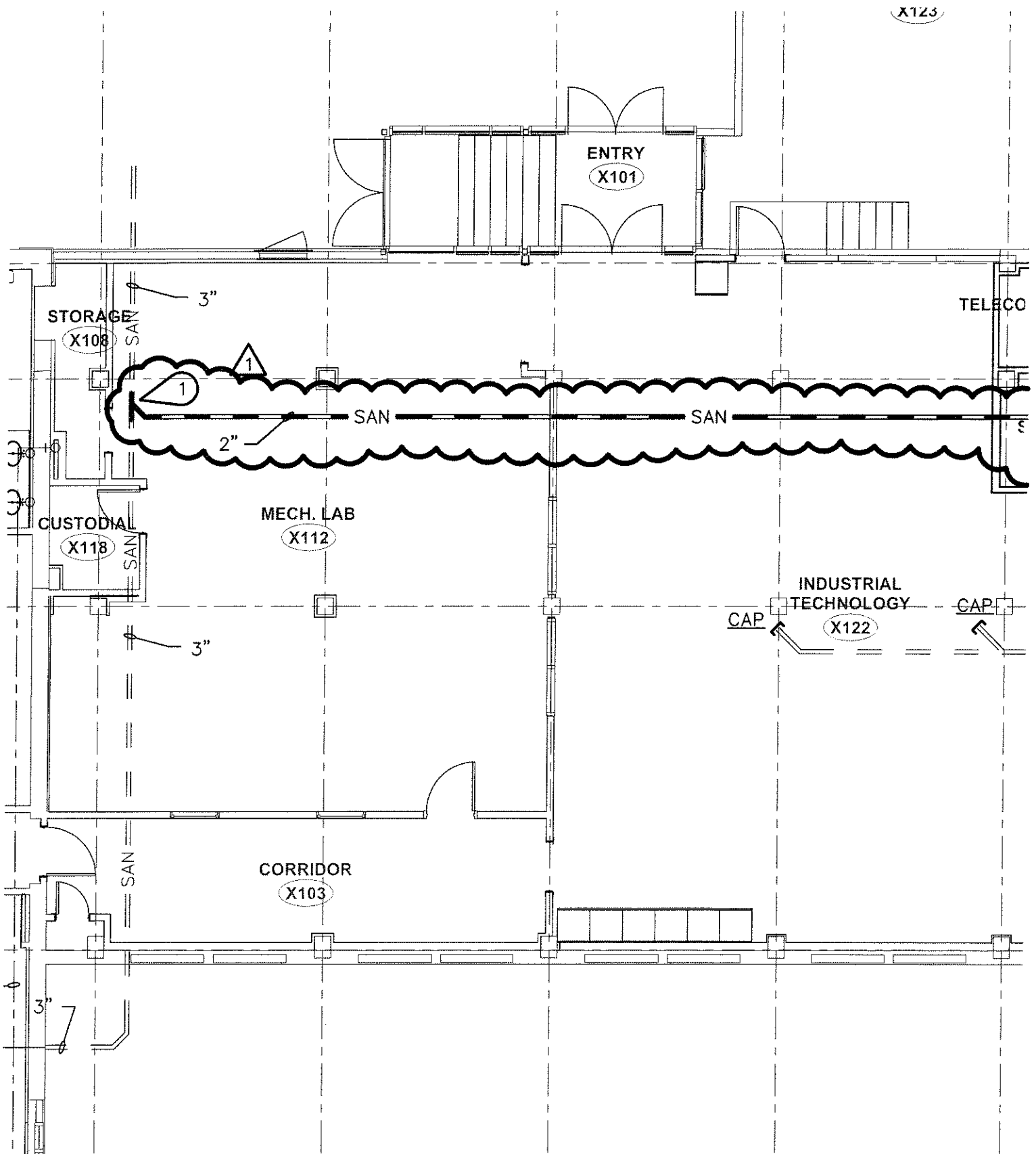
Addendum No. 1

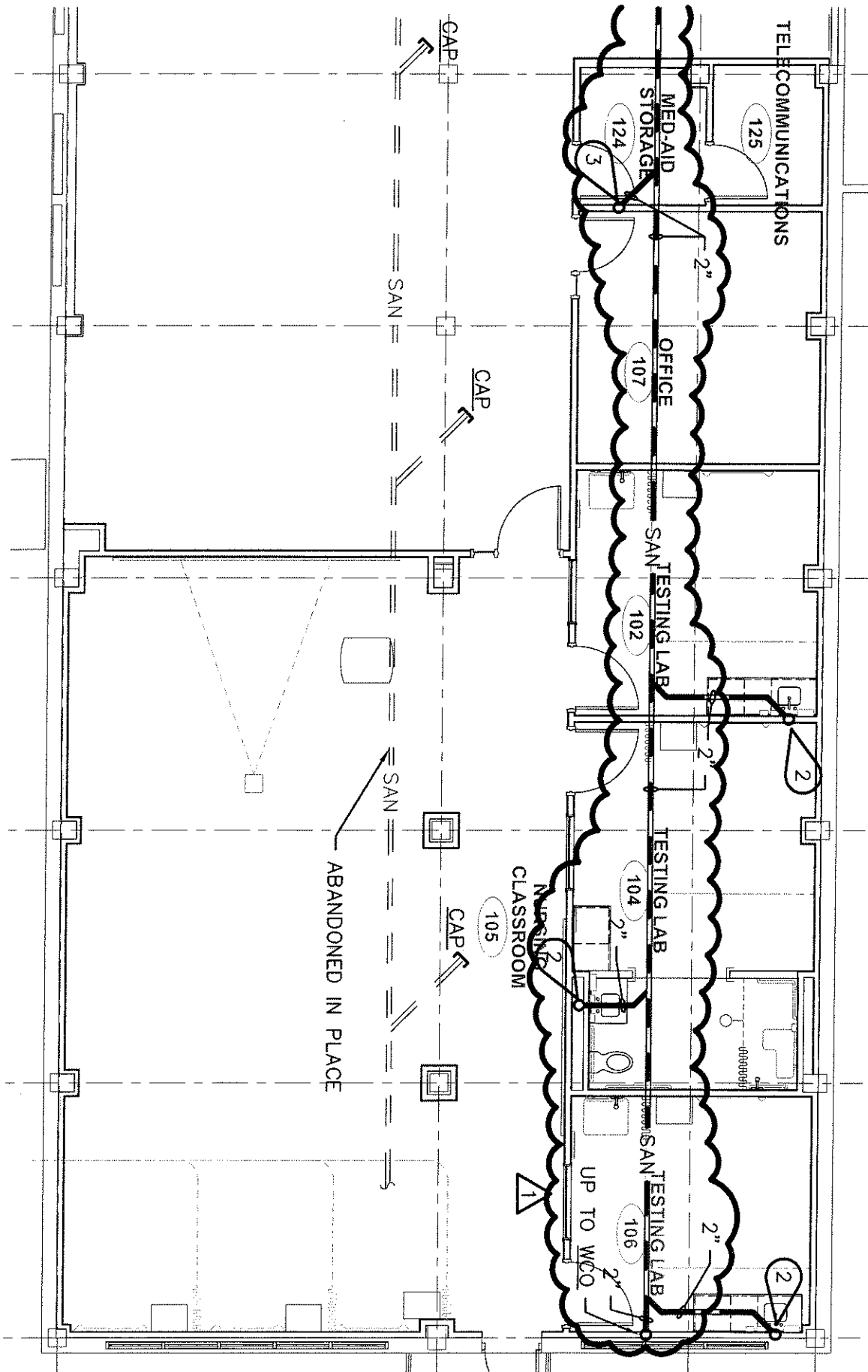
Date: May 30, 2013

Project Number: 1322

A1









## **WALL CLEANOUT: WCO**

### **FIXTURE**

CAST BRONZE TAPER THREAD PLUG FOR WALL CLEANOUT WITH STAINLESS STEEL ROUND ACCESS COVER AND VANDAL PROOF RETAINING CENTER SCREW.

**J.R. SMITH 4472T-U.**

DUCO CAST IRON CLEANOUT TEE AND COUNTERSUNK PLUG.

**J.R. SMITH 4512S. (HUB AND SPIGOT CONNECTION)**

**J.R. SMITH 4512Y. (NO HUB CONNECTION)**