

Please take note of the following revisions which will be labeled as Addendum #1

General Changes in Addendum #1
- Remove PMS 186 from all applications to be replaced by a standard red as used throughout UNL Athletic Facilities to be verified by Capital Planning and Construction.
- Alternate materials will be accepted through substitution request.

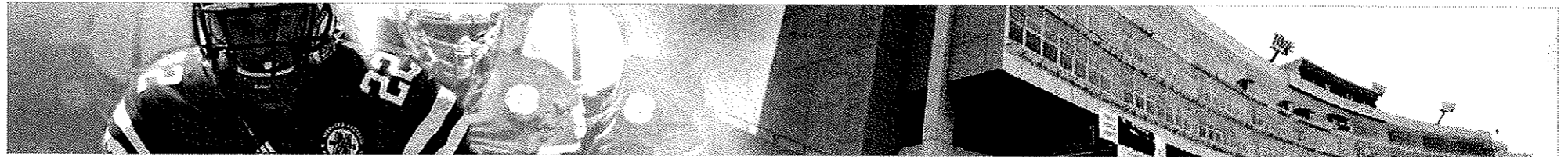


BID PACKAGE

UNIVERSITY OF NEBRASKA

MEMORIAL STADIUM: EAST STADIUM EXPANSION

MAY 1, 2013



PROJECT TEAM:

UNL Facilities Planning and Construction: Brad Muehling – Project Manager

UNL Athletics Capital Planning and Construction: John Ingram, Maggi Thorne, Ben Huenemann, Brad Isham, Chynna LaPole

The Clark Enersen Partners, Inc: Tim Ripp, Blake Thomas, in association with Jack Porter: Christina Harrell, Danny Stemann

5/16/2013
ADDENDUM #1

9. Materials And Finishes

ALUMINUM:

Alloy and temper recommended by aluminum producer and finisher for type of use and finish indicated. Strength properties should be no less than the following for each form of aluminum:

- Extruded Bar and Tube: ASTM B 221 (ASTM B 221M), alloy 6063-T5/T52
- Plate and Sheet: ASTM B 209 (ASTM B 209M), alloy 6061-T6.

DYE-SUBLIMATED TENSION FABRIC: 8.8 oz. Power Stretch poly-knit fabric with silicon edge gasket for extrusion track mounting (Construction: Warp Knit 3 bar 100d x 150d)

VINYL BANNERS: 13 oz. block-out matte vinyl printed on a Durst P10 large format printer with UV inks.

- Total Weight - 455 g/m²
- Thickness - 14 mil
- Opacity - 100%
- Gloss @ 60° - 6.7
- White Point - 88
- Base - 13 oz. scrimmed vinyl with blockout
- Tensile Strength (lb/in) - 200 MD; 135 CD
- Tear Strength (lbs) - 5.9 MD; 5 CD
- Burst Strength (psi) - 260
- Finish -Matte
- Flame Resistant (sec/in)- 1.7/4.5

Addendum #1
Alternate Accepted
for using 8 oz.. Vinyl
Banner Material

Addendum #1
Alternate Accepted
Must be submitted
during bidding

PERFORATED VINYL: 3M™ Scotchcal™ Perforated Window Graphic Film (4 mil thickness)

PRESSURE SENSITIVE ADHESIVE: 3M180 with Matte Laminate Controltac™ Graphic Film, IJ180-10, RG180-10*, with Comply™ Adhesive IJ180C-10, FN180C-10, RG180C-10* (2 mil white, vinyl film)

CUT VINYL: 3M Scotchcal 7125-53 Cardinal Red, 7125-12 Black and 7125-10 White

LAMINATE:

- Brushed Aluminum Millwork: Abet 873 Brushed Aluminum
- Red: Industry standard (Abet, WilsonArt, Laminart, Nevemar, Pionite, Etc.) matched to PMS-186
- Brushed Aluminum Faced Lettering: Wilsonart BRITE BRUSHED NATURAL ALUMINUM #6256 Typ. 419

Addendum #1
Alternate Accepted
Must be submitted
during bidding

Standard Red

ACRYLIC: Pigmented Acrylic to match PMS-186

Standard Red

Addendum #1
Alternate Accepted
Must be submitted
during bidding

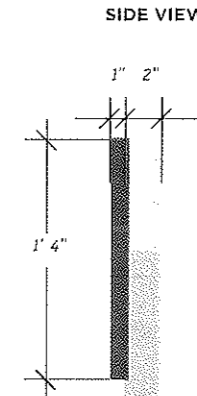
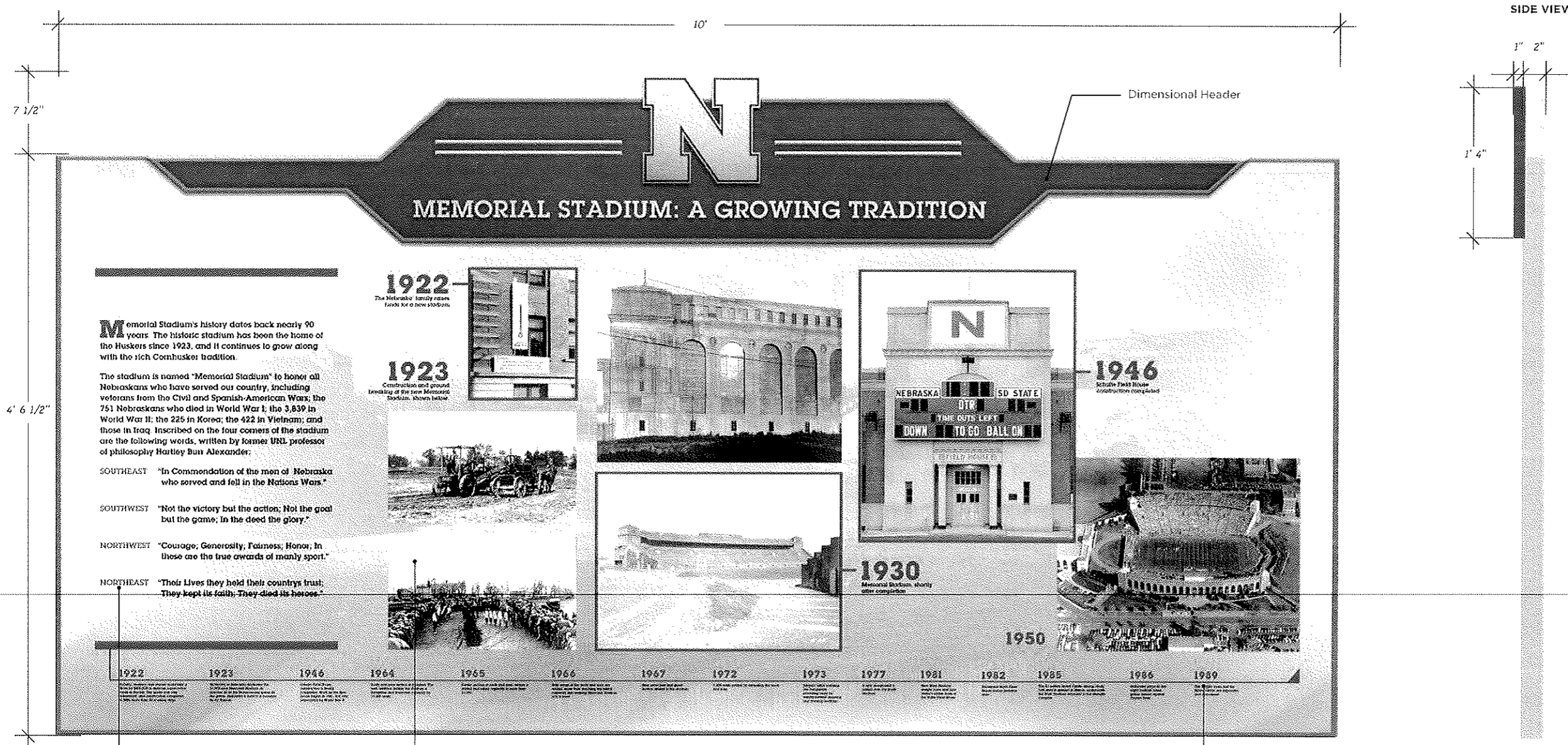
ALUMINUM LETTERING

Aluminum alloy #5052, brushed finish with vertical grain, stud mounted, painted where necessary

PAINT: On Acrylic/Aluminum lettering: Sprayed with high-gloss liquid Polyurethane Paint, with thinner and catalyst, baked to cure.

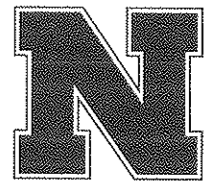
POWDER COATING: TIGER Drylac Metallic Series 49/90500 (Silver Matte) for all exposed aluminum surfaces

HARDWARE: unless otherwise noted, all hardware is to be concealed from site, or integrated into the finish of each element. All visible hardware is to be display-clear anodized aluminum hardware.



GRAPHICS & SIGNAGE BID SET

University of Nebraska Lincoln
 Memorial Stadium:
 East Stadium Expansion



Approved shop drawings for all mounting, hardware and securing applications must be provided to the architect for approval prior to production and installation. All final sizes need to be field measured before starting production. Field measurements are the responsibility of the selected graphics contractor

DATE: 05.01.13

SIGN TYPE: 1

1A

An introduction to Memorial Stadium's rich history

Photos highlight visual change in the Stadium look over the years.

Stadium History is told through a timeline that highlights building growth.

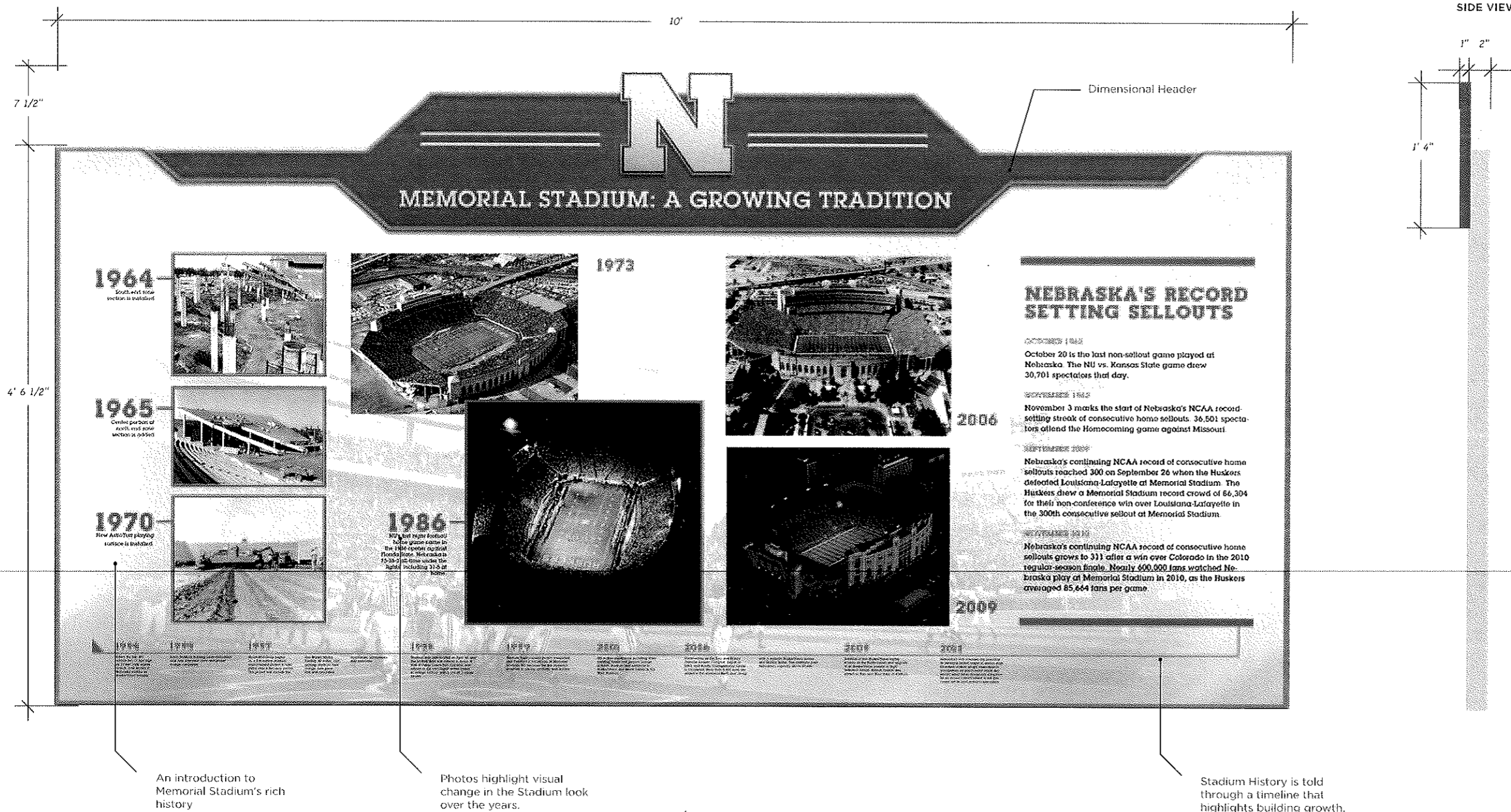
Base: Digitally printed vinyl graphic applied to .080 sheet aluminum with 2" square aluminum tubing structure. Sides finished with extruded aluminum bar trim powder coated metallic silver. Attached to wall with concealed mount.

Header: 1" thick High Density Urethane Foam routed to shape and sanded blasted for letter detailing. Painted gloss red (PM45-186) with metallic silver stroke, logo, and lettering.

AD #1 Standard Red

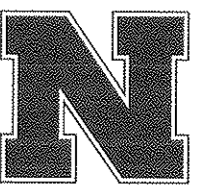
SIGN TYPE 1A

STADIUM HISTORY DISPLAY



GRAPHICS & SIGNAGE BID SET

University of Nebraska Lincoln
Memorial Stadium:
East Stadium Expansion



Approved shop drawings for all mounting, hardware, and securing applications must be provided to the architect for approval prior to production and installation. All final sizes need to be field measured before starting production. Field measurements are the responsibility of the selected graphics contractor

DATE: 05.01.13

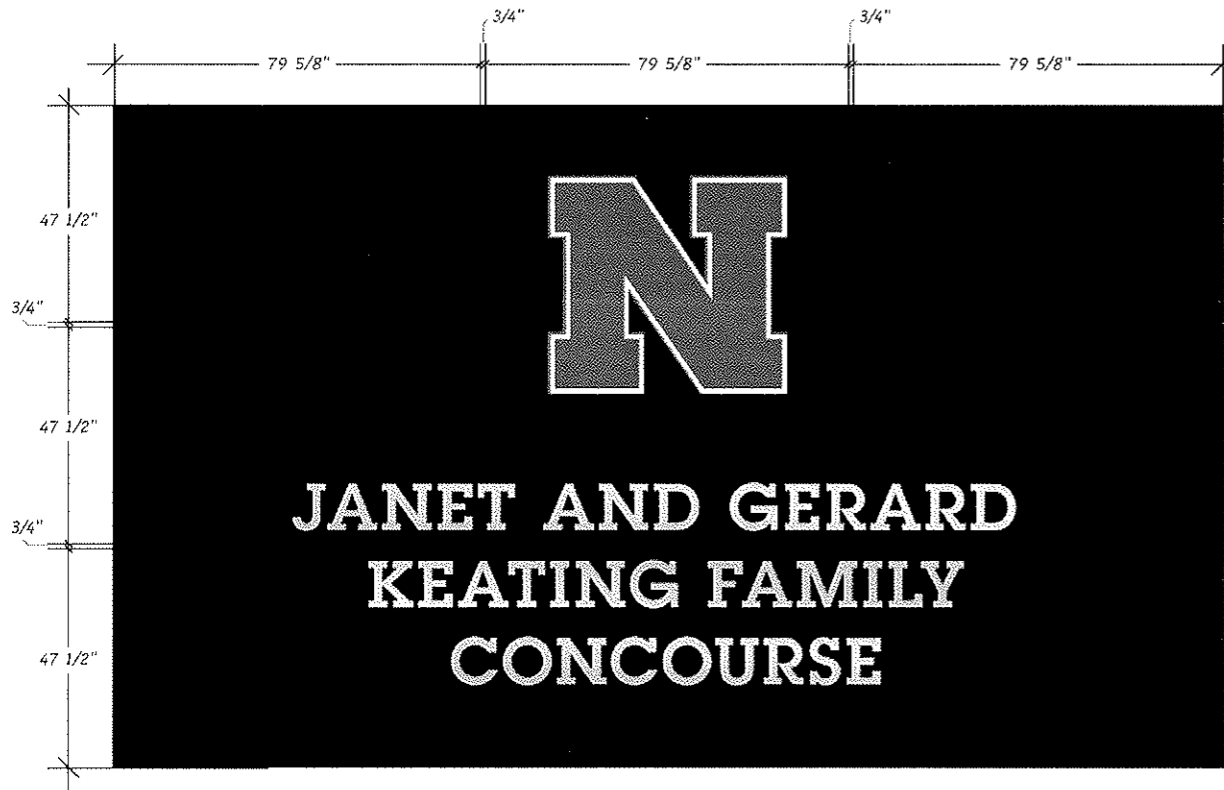
SIGN TYPE: 1

1B

Base: Digitally printed vinyl graphic applied to .080 sheet aluminum with 2" square aluminum tubing structure. Sides finished with extruded aluminum bar trim powder coated metallic silver. Attached to wall with concealed mount.
Header: 1" thick High Density Urethane Foam routed to shape and sanded blasted for letter detailing. Painted gloss red (PMS 196) with metallic silver stroke, logo, and lettering

AD #1 Standard Red

SIGN TYPE 1B

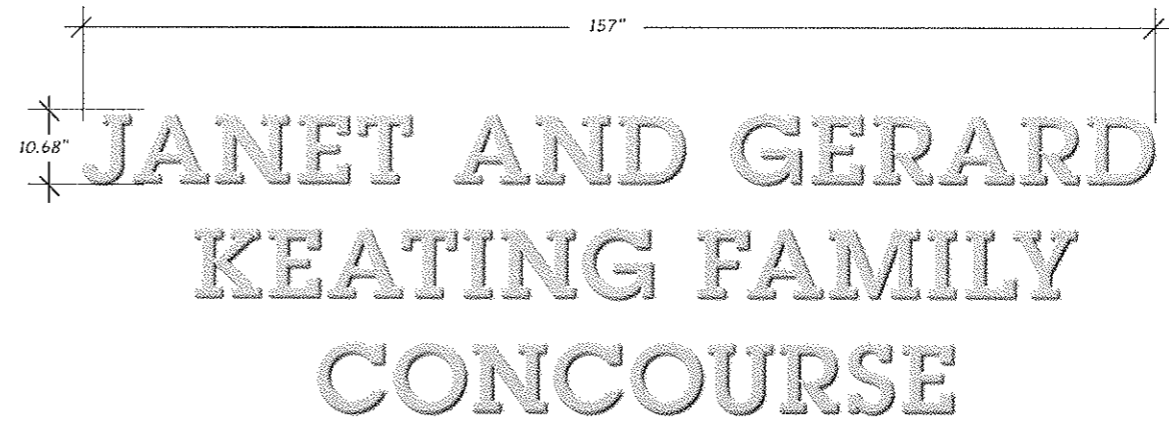


Veneer or laminate over 3/4" MDF. 3/4" reveals with veneer tape painted black.

Base Bid: Maple veneer plywood stained to match existing

Alt Bid: Nevemar Valencia Teak Laminate (WT0003)

WOOD PANELS

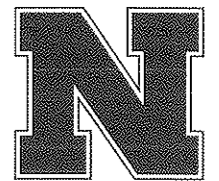


1/2" thick brushed aluminum laminate face with black Komatex backer stud mounted to wood panels

DIMENSIONAL LETTERS

GRAPHICS & SIGNAGE BID SET

University of Nebraska Lincoln
Memorial Stadium:
East Stadium Expansion

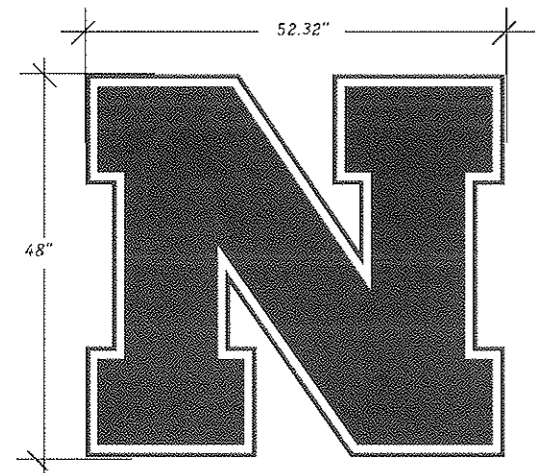


Approved shop drawings for all mounting, hardware and securing applications must be provided to the architect for approval prior to production and installation. All final sizes need to be field measured before starting production. Field measurements are the responsibility of the selected graphics contractor

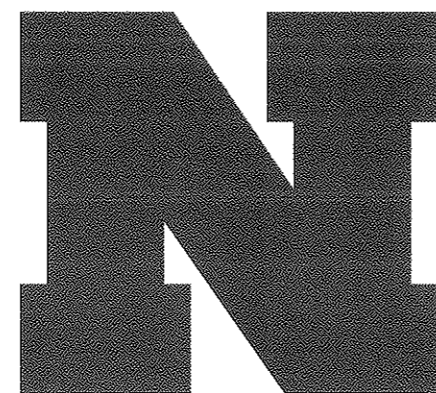
DATE: 05.01.13

SIGN TYPE: 2

2A-2

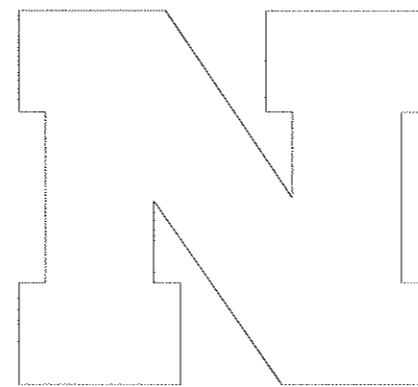


Multi Dimensional Logo

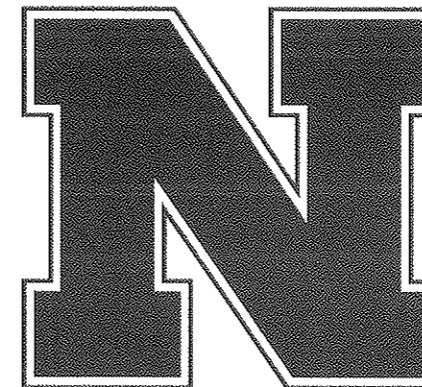


Layer 1:
1" thick acrylic painted PMS 186 gloss finish

AD #1 Standard Red



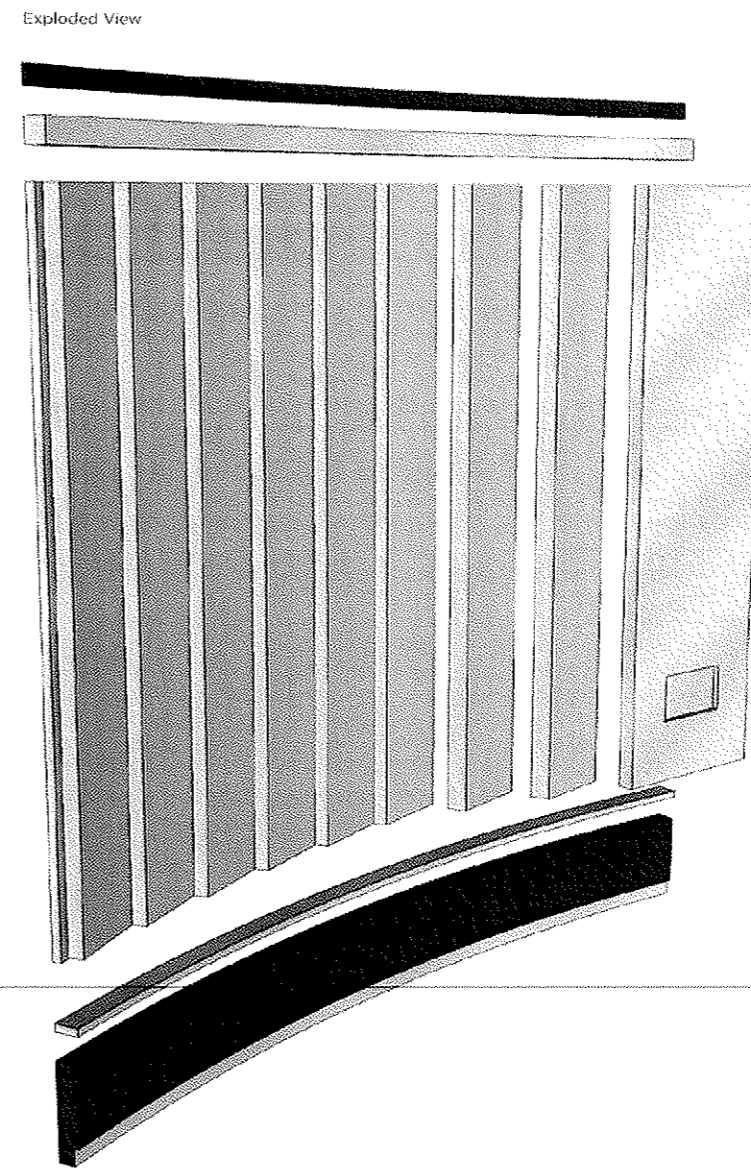
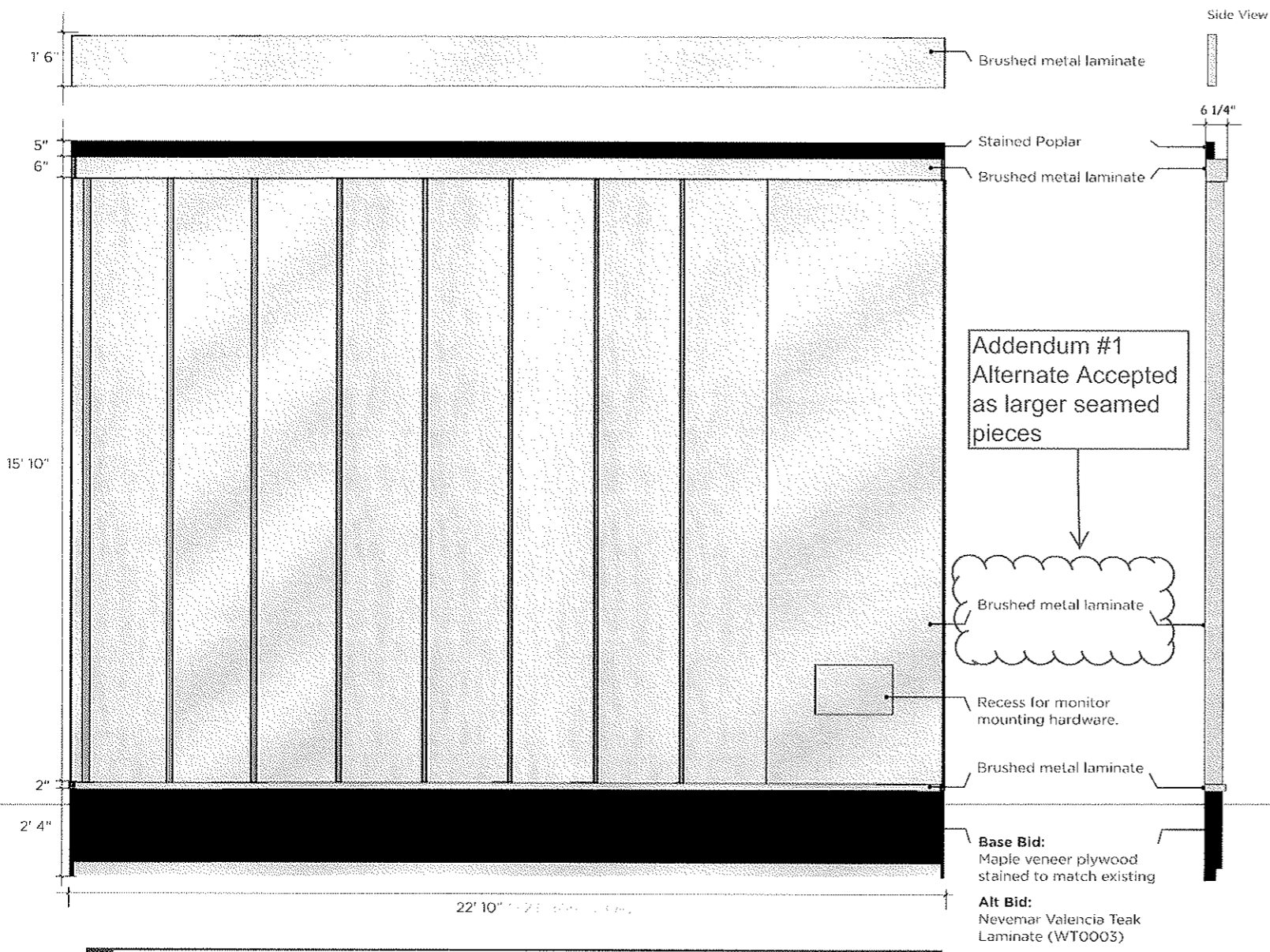
Layer 2:
White cut vinyl



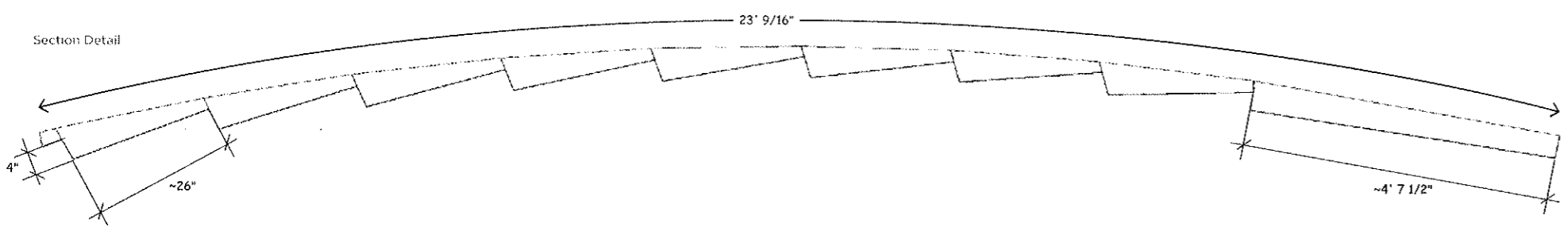
Layer 3:
1/2" thick acrylic painted PMS 186 gloss finish

AD #1 Standard Red

DIMENSIONAL LOGO

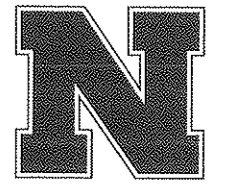


MILLWORK



GRAPHICS & SIGNAGE BID SET

University of Nebraska Lincoln
Memorial Stadium:
East Stadium Expansion



Approved shop drawings for all mounting, hardware and securing applications must be provided to the architect for approval prior to production and installation. All final sizes need to be field measured before starting production. Field measurements are the responsibility of the selected graphics contractor

DATE: 05.01.13

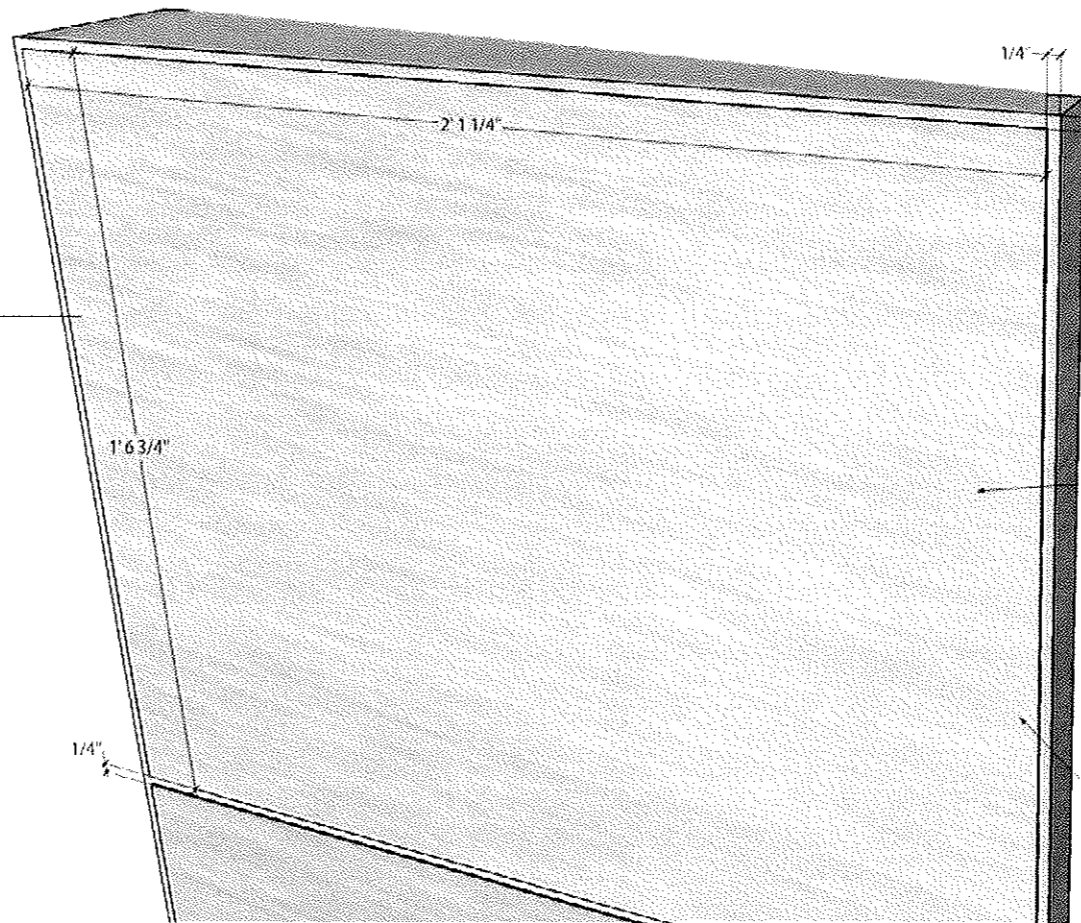
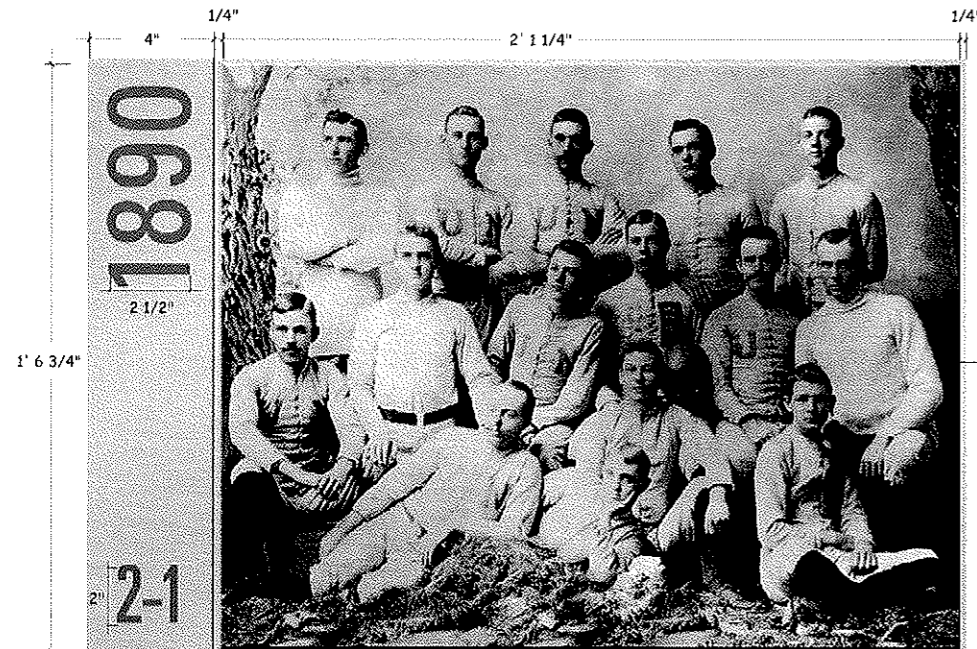
SIGN TYPE: 3

3B-3

ADDENDUM #1

5/16/2013

TEAM HISTORY DISPLAYS



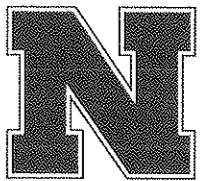
SIDES AND FACE OF BACKER ARE COMPLETELY COVERED IN BRUSHED LAMINATE

PLAQUES ARE DIRECT PRINT ONTO THE SAME LAMINATE AS THE BACKER WITH 1/4\"/>

PLAQUES ARE HELD TO THE BACKER WITH VHB TAPE

GRAPHICS & SIGNAGE BID SET

University of Nebraska Lincoln
Memorial Stadium:
East Stadium Expansion



Approved shop drawings for all mounting, hardware and securing applications must be provided to the architect for approval prior to production and installation. All final sizes need to be field measured before starting production. Field measurements are the responsibility of the selected graphics contractor

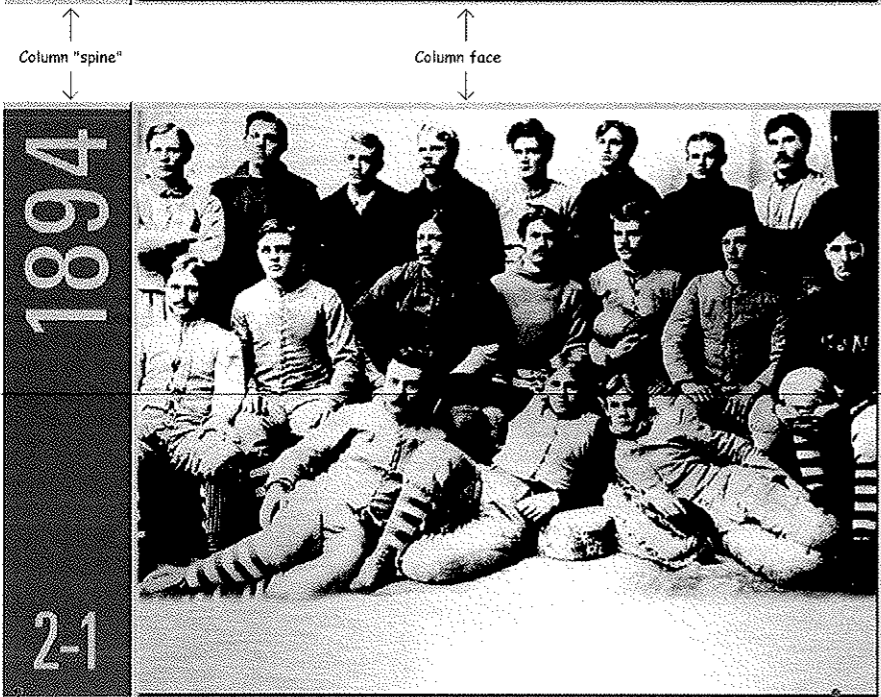
DATE: 05.01.13

SIGN TYPE: 3

3A-4

ADDENDUM #1

5/16/2013



Year and record in red (PMS 186) cut vinyl applied to laminate base. Standard years receive cut vinyl numbers. Conference championship years receive red vinyl block with numerals reversed out revealing brushed metal laminate base.
QTY - 43 (room for 80) **AD #1 Standard Red**

CUT VINYL

Direct print laminate plaque (to match mill work) VHB tape mounted to millwork base with 1/4\"/>

Size - 25 1/4\"/>

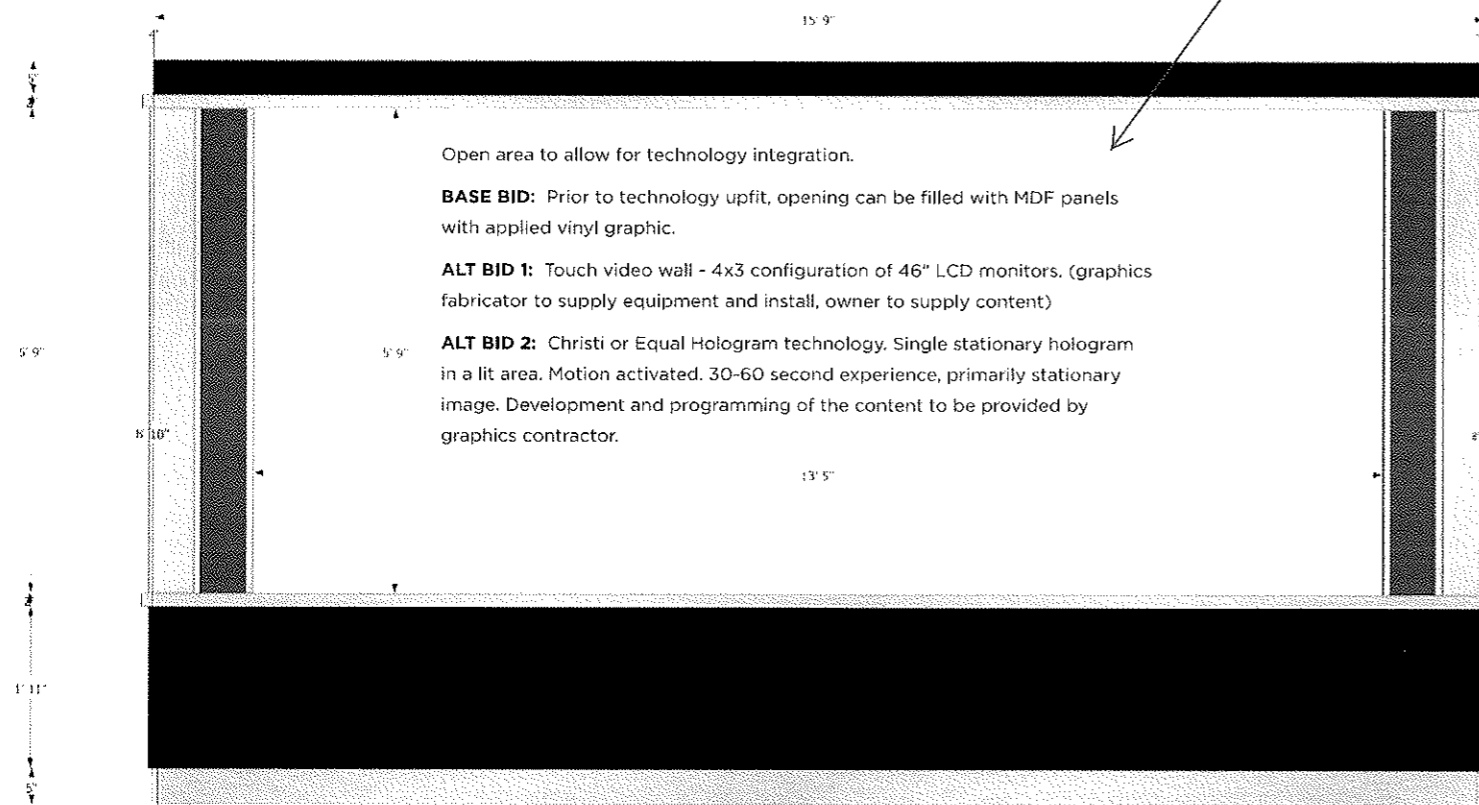
QTY - 43 (room for 80)

ALT BID: Team images prepared as digitally printed vinyl

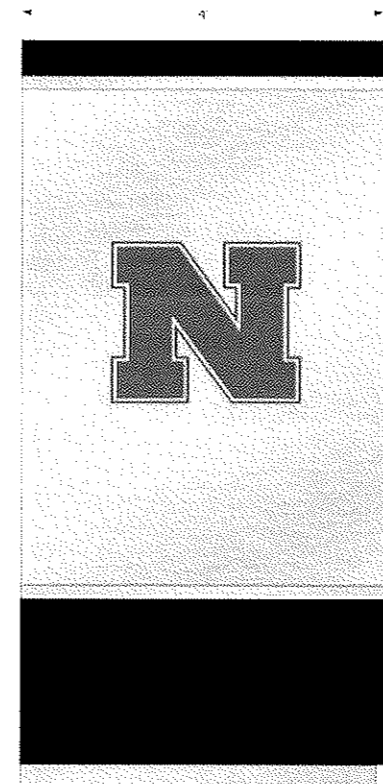
TEAM HISTORY PLAQUES

VIDEO/TECHNOLOGY WALL

Addendum #1
32 pt. touch screen (See Spec.)



FRONT ELEVATION 1



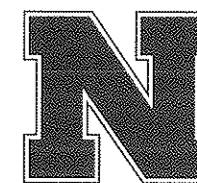
SIDE ELEVATION 1

Final size and construction to be determined based on selected technology feature

Custom cabinetry needs to be freestanding, enclosure needs to be complete

GRAPHICS & SIGNAGE BID SET

University of Nebraska Lincoln
Memorial Stadium:
East Stadium Expansion

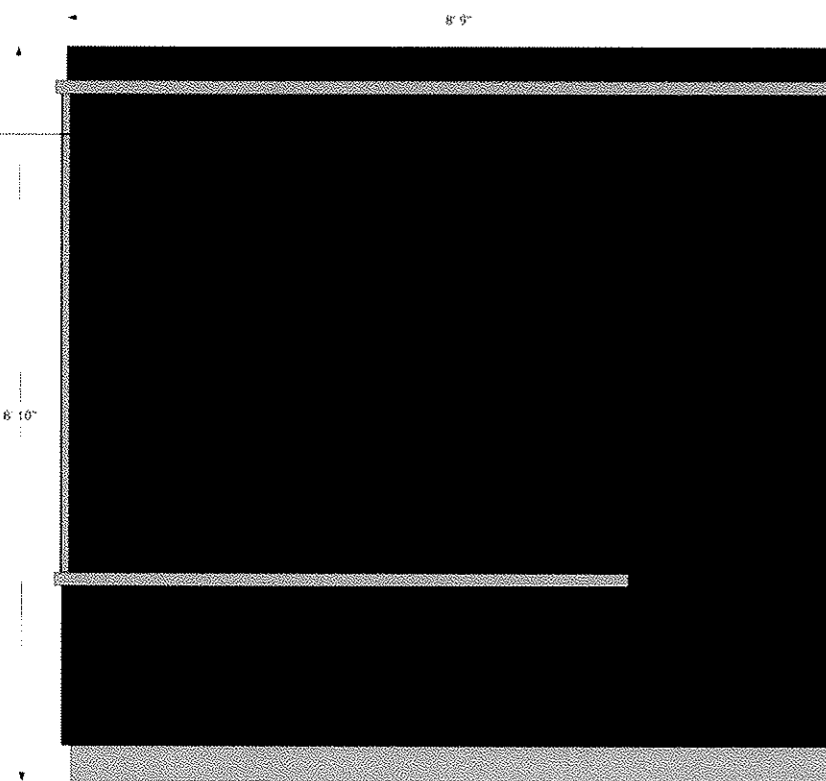


Approved shop drawings for all mounting, hardware and securing applications must be provided to the architect for approval prior to production and installation. All final sizes need to be field measured before starting production. Field measurements are the responsibility of the selected graphics contractor

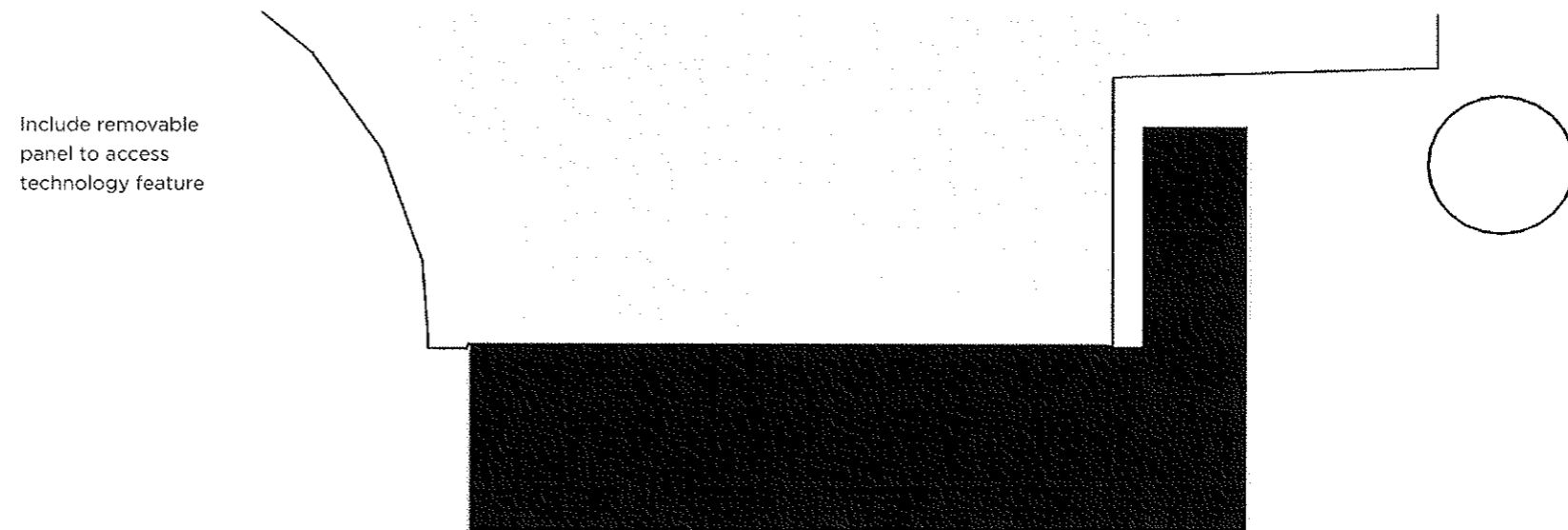
DATE: 05.01.13

SIGN TYPE: 4

4B-1



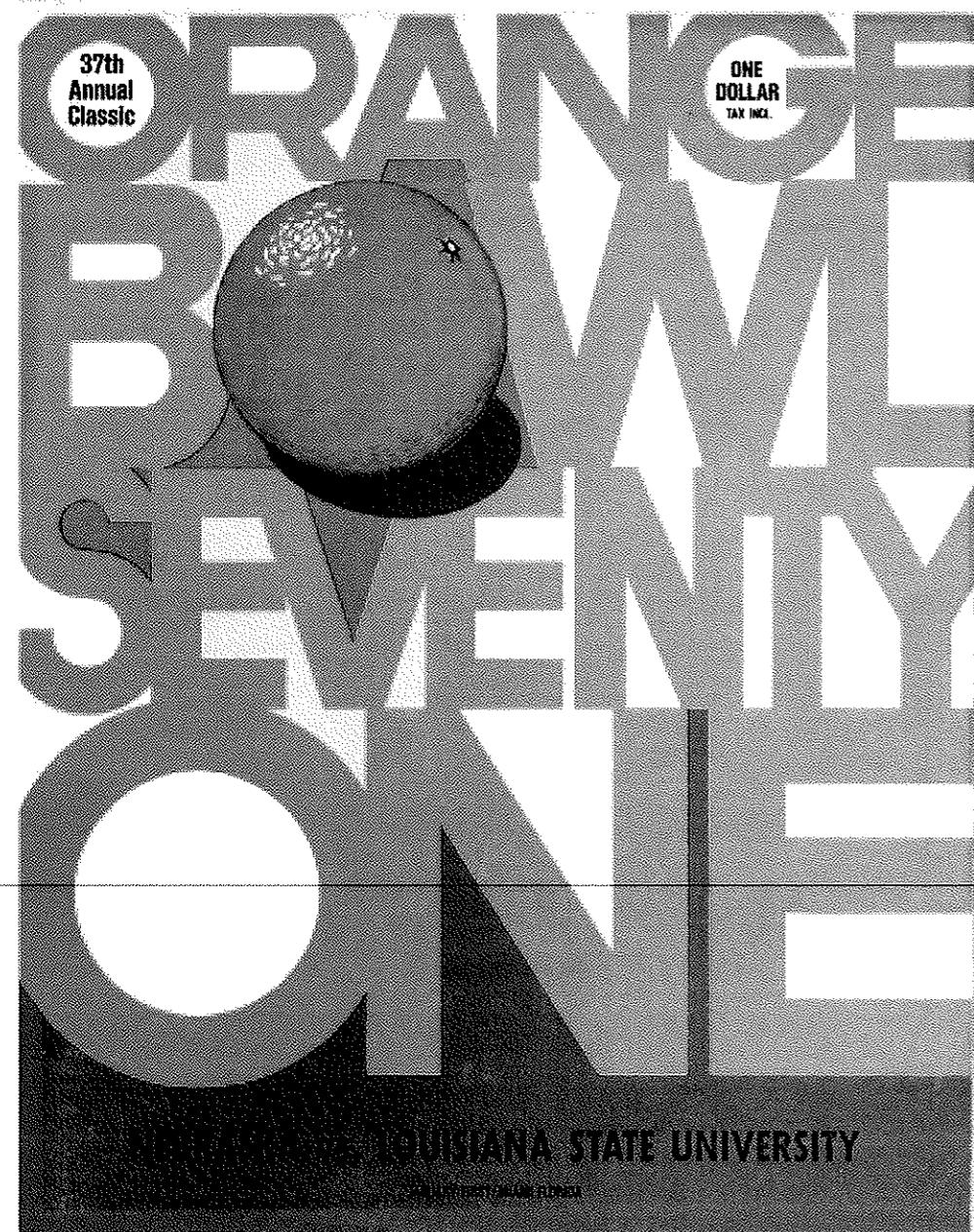
SIDE ELEVATION 2



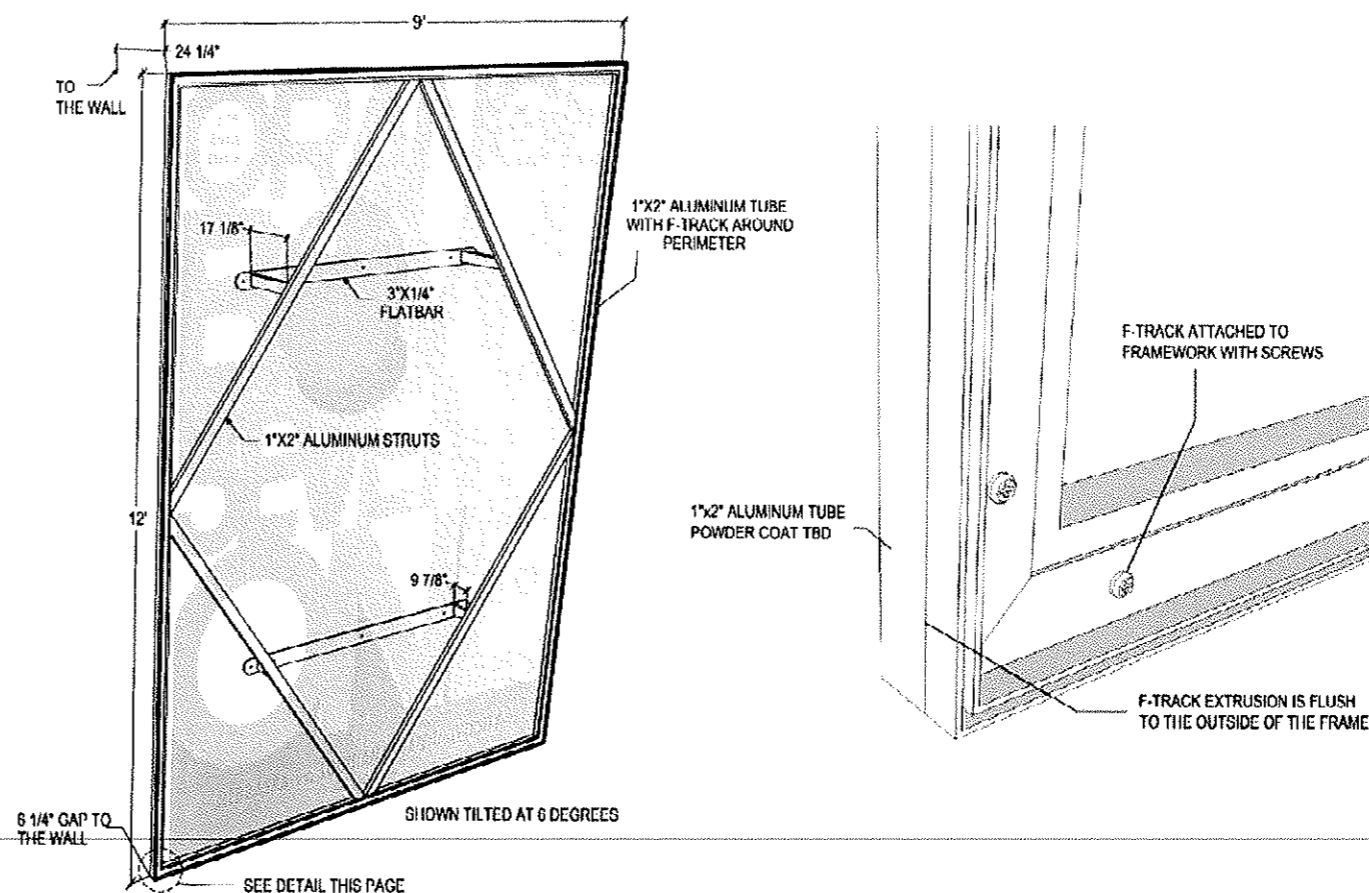
PLAN VIEW

ADDENDUM #1

5/16/2013



CONSTRUCTION DETAIL



Addendum #1
 - Construction to be Velcro Wrapped feature instead of silicone edge gasket.
 - Alternate to fabric - Matte Vinyl 8 oz..

Nebraska's history of bowl game excellence is on display through a series of large scale game program reproductions. Program signs tilt off the wall for better viewing perspective.
 Nebraska to select covers for reproduction.
 8.8 oz. Power Stretch poly-knit fabric with silicon edge gasket for extrusion track mounting.
 Banner frame powder coated TIGER Drylac Metallic Series 49/90500 (Silver Matte)
 9x12' - QTY 12

GRAPHICS & SIGNAGE BID SET

University of Nebraska Lincoln
 Memorial Stadium:
 East Stadium Expansion



Approved shop drawings for all mounting, hardware and securing applications must be provided to the architect for approval prior to production and installation. All final sizes need to be field measured before starting production. Field measurements are the responsibility of the selected graphics contractor

DATE: 05.01.13

SIGN TYPE: 6

6

ADDENDUM #1

5/16/2013