



Project: CSC Eagle Ridge Housing

Project No.: L12007

Location: Chadron Nebraska

Date: April 29, 2013

This Addendum is issued by the Architect to all bidders of record prior to receipt of proposals. Bidders shall acknowledge receipt of this addendum by so indicating on the Proposal Form. Failure to do so may subject Bidder to disqualification.

All information and instructions given herein shall become a part of the Contract Documents.

GENERAL

1. No bid bond is required. A P&P bond needs to be provided as an add alternate.
2. The architectural sheets in the Final GMP set were printed at a slightly reduced scale factor. Although drawings are not meant to be scaled, the plan sheets are reissued in this set to reflect the accurate scale. See attached A1.1, A1.2, A1.3, A1.4, A2.1, A2.2.

PROJECT MANUAL

1. Section 08520 Aluminum Clad Window section has been added.
2. Section 087100 Door Hardware
 - A. Paragraph 3.06. Approved manufacturers. Stanley is an approved manufacturer for hinges and closers.
3. Section 092116 Gypsum Board Assemblies
 - A. Paragraph 3.05 C. Add Level 4. Walls and ceilings scheduled to receive "orange peel" finish.

DRAWINGS

1. Sheet A1.1
 - A. Extend drain tile around 3 sides of the building
2. Sheet A1.3
 - a. 4' wide ¾" thick plywood walkway shall extend from attic access to gable vent. Frame walkway up from bottom chord of truss to allow for blown insulation and ductwork.
3. Sheet A2.1. See revised Lower Level Ceiling Plan. This sheet replaces the previously issued sheet in its entirety.



4. Sheet A7.1
 - a. Window Schedule. The following windows are to be Aluminum Clad windows (section 08520): W9, W10, W11, W12, W13, W14, W15.
5. Sheet A8.1. See revised material list and finish plans. This sheet replaces the previously issued sheet in its entirety.
6. Sheet S1.3 – Top of Wall Plan
 - B. Revise all -1'-2 3/4" elevations to -1-5 1/2".
 - C. Sheet S2.1 – First Floor Framing Plan
 - a. Reference built-up columns near Grid 5. Revise note to read: "BUILT-UP COLUMN, HSS12x4x1/2 SANDWICHED BETWEEN 2-2x16 (ACTUAL DIMENSION) S4S, WESTERN RED CEDAR, TYP 5 LOCATIONS (1-2x16 each side of tube). 2x16's shall be attached to 12x4 tubes with 2 – rows 1/2" diameter through bolts at 4'-0" on center; bolt heads and nuts shall be countersunk.
 - D. Sheet S2.1 – First Floor Framing Plan
 - a. Revise all 20" Deep Pre-Engineered Wood Floor Trusses to 14" Deep Pre-Engineered Wood Floor Trusses. Delete sistered LVL's at wood floor trusses; 14" deep floor trusses will cantilever past cast-in-place concrete wall. See attached Supplemental Drawing SDS-2 for revised detail at truss cantilever, 5/S4.1.
 - E. Sheet S2.2 – Roof Framing Plan
 - a. General Framing Notes. Add the following note: Stud framing behind gable end translucent polycarbonate glazing (see Architectural for locations) shall be 2x6 studs spaced at 24" on center. Top of each stud shall be supported with a vertical deflection clip.
 - F. Sheet S2.2 – Roof Framing Plan
 - a. Headers. Revise all 2-2x6 and 3-2x8 headers to 2-2x10 and 3-2x10 headers, respectively.
 - G. Sheet S2.2 – Roof Framing Plan
 - a. Porch Framing. Reference clouded portion of roof framing near at lower left hand corner of framing plan. Revise porch framing in its entirety. See attached Supplemental Drawing SDS-1. HSS12x4 beams shall be sandwiched between 2-2x16 (actual dimension) S4S, Western Red Cedar, typical 5 locations (1-2x16 each side of tube). 2x16's shall be attached to 12x4 tubes with 2 – rows 1/2" diameter through bolts at 4'-0" on center; bolt heads and nuts shall be countersunk. HSS 12x4 beams shall be connected to HSS 12x4 columns (at Grid 5) with full penetration groove welds all around to create a mitered condition. HSS 12x4 beams are supported by HSS4x4x1/2 columns at Grid Line 3 with a field bolted connection.
 - b. Ceiling Joists. Reference ceiling areas between exterior wall and girder truss between Grids 1 and 3 and between Grids 1 and 5. Ceiling joists shall be



provided in these areas as required.

H. Sheet S3.1 – Foundation Details

- a. Reference Detail 10. Revise built-up column note to read: "BUILT-UP COLUMN, HSS12x4x1/2 SANDWICHED BETWEEN 2-2x16 (ACTUAL DIMENSION) S4S, WESTERN RED CEDAR, TYP 5 LOCATIONS (1-2x16 each side of tube), 2x16's shall be attached to 12x4 tubes with 2 – rows 1/2" diameter through bolts at 4'-0" on center; bolt heads and nuts shall be countersunk.

I. Sheet S4.1 – Framing Details

- a. Reference Details 2, 3, 4, 5, 7, 11 and 15, stud wall or bottom plate note, revise the word single to double. The perimeter stud walls and interior bearing walls shall have double bottom plates and double top plates.

J. Sheet S5.1 – Truss Elevations & Details

- a. Reference Truss Elevations T2, T3 and T4. Additional blocking spaced at 16" on center shall be provided at diagonal truss members for support of exterior sheathing

K. Sheet E0.1. Second light fixture and pole type "T1" from the right shall become Fixture type "T2" with additional handhole for security camera by others.

L. Sheet E2.1 Lower Level Power Plan

- a. Vanity 007, 022 – Move GFI receptacles on the back wall to the side walls and locate in one box.

M. Sheet E2.1 Lower Level Power Plan

- a. Vanity 032 – Delete GFI receptacle on the back wall.

N. Sheet E2.2 First Floor Power Plan

- a. Vanity 106, 120, 130 – Move receptacles on the back wall to the side walls and locate in one box.

O. Sheet E6.1 Electrical Schedules – Lighting Fixture Schedule

- a. Type A1 – Provide with 4100K lamps.
- b. Type A1 – Lithonia is an acceptable manufacturer.
- c. Replace type B1 with Williams Cat. No. WMA-4-232-A-EB8P2*AD
- d. Type J1 shall be 83" in length in lieu of 8', Lumen Pulse Cat. No. LL12R-120-7-DRO-40K-NO-FG-WH.
- e. Type T1 shall be 208V and provided with a 70 watt metal halide lamp in lieu of high pressure sodium.
- f. Add fixture type T2 which is the same as type T1 except with an additional handhole 14' up the pole.

P. Sheet L2.1. The contractor has the option to either pour the curb integrally with



Name of project
Date

Page 4 of 4

the concrete pavement or separately.

Q. Sheet L6.1. Remove all 4" gravel under the paving details.

Attachments:

Section 085200, A1.1, A1.2, A1.3, A1.4, A2.1, A2.2.A, 8.1, SDS1, SDS2

END OF ADDENDUM

SECTION 085200

ALUMINUM CLAD WOOD WINDOW

PART 1 GENERAL

1.01 SECTION INCLUDES

- A. Aluminum clad wood direct glaze window complete with glazing, jamb extension, and standard or specified anchors, trim, and attachments.

1.02 RELATED SECTIONS

- A. Section 062000—Finish Carpentry: Wood trim other than furnished by window manufacturer
- B. Section 079205—Joint Sealants: Sill sealant and perimeter caulking
- C. Section 099000—Paints and Coatings: Paint or stain other than factory applied finish

1.03 REFERENCES

- A. American Society for Testing and Materials (ASTM):
 - 1. E 283: Standard Test Method for Rate of Air Leakage Through Exterior Windows, Curtain Walls, and Doors.
 - 2. E 330: Standard Test Method for Structural Performance of Exterior Windows, Curtains Walls, and Doors by Uniform Static Air Pressure Difference.
 - 3. E 331: Test Method for Water Penetration of Exterior Windows, Curtain Walls and Doors by Uniform Static Air Pressure Difference
 - 4. E 547: Standard Test Method for Water Penetration of Exterior Windows, Curtain Walls, and Doors by Cyclic Static Air Pressure Differential.
 - 5. E 2190: Specification for Sealed Insulated Glass Units.
 - 6. C 1036: Standard Specification for Flat Glass.
- B. WDMA I.S.4: Industry Standard for Water Repellent Preservative Treatment for Millwork.
- C. American Architectural Manufacturers Association / Window and Door Manufacturers Association (AAMA / WDMA): ANSI / AAMA / WDMA 101 / I.S.2-97 Voluntary Specifications for Aluminum, Vinyl (PVC) and Wood Windows and Glass Doors. and 101 / I.S.2 / NAFS-02 Voluntary Performance Specification for Windows, Skylights and Glass Doors.
- D. Window and Door Manufacturers Association (WDMA): 101 / I.S.2 WDMA Hallmark Certification Program.
- E. IGMA TM-3000-90(04) - Glazing Guidelines for Sealed Insulating Glass Units; Sealed Insulating Glass Manufacturers Association; 2004.
- F. GANA (GM) - GANA Glazing Manual; Glass Association of North America; 2009.
- G. GANA (SM) - GANA Sealant Manual; Glass Association of North America; 2008.
- H. American Architectural Manufacturers Association (AAMA): 2605: Voluntary Specification for High Performance Organic Coatings on Architectural Extrusions and Panels.

- I. National Fenestration Rating Council (NFRC): 101: Procedure for Determining Fenestration Product Thermal Properties.

1.04 SYSTEM DESCRIPTION

- A. Design and Performance Requirements:
 - 1. Window units shall be designed to comply with ANSI / AAMA / WDMA 101 / I.S.2-97; 101 / I.S. 2/ NAFS-02; and AAMA/WDMA/CSA 101/I.S.2/A440-05.
 - a. FW-HC55 frame size 84 X 96 (jamb screw or masonry clip install).
 - 2. Air leakage shall not exceed the following when tested at 6.24 psf according to ASTM E 283:0.30 cfm per square foot of frame.
 - 3. No water penetration when tested at the following pressure according to ASTM E 547 and E 331: 9.0 psf.
 - 4. Assembly shall withstand a positive or negative uniform static air pressure difference of (F-C35 – 52.5) (F-HC60 – 90) psf without damage when tested according to ASTM E 330.

1.05 SUBMITTALS

- A. See Section 013000 - Administrative Requirements, for submittal procedures.
- B. Product Data: Provide data on system materials, product characteristics, performance criteria, and system limitations.
- C. Shop Drawings: Submit drawings indicating opening dimensions, elevations and job specific details for each window type.
- D. Samples:
 - 1. Submit corner section with all specified finishes and options indicated.
 - 2. Include glazing system, quality of construction, and specified finish.
- E. Quality Control Submittals: Certificates: Submit manufacture's certifications indicating compliance with specified performance and design requirements under provisions of Section 01 33 23.
- F. Operations and Maintenance Information: Submit per Section 017800.
- G. Warranty Information: Submit per Section 017800.

1.06 DELIVERY STORAGE AND HANDLING

- A. Deliver in original packaging and protect from weather.
- B. Prime or seal wood surfaces, including surface to be concealed by wall construction, if more than thirty (30) days will expire between delivery and installation.
- C. Store window units in an upright position in a clean and dry storage area above ground and protect from weather and damage.

1.07 WARRANTY

- A. See Section 017800 - Closeout Submittals, for additional warranty requirements.

- A. Windows shall be warranted to be free from defects in manufacturing, materials, and workmanship for a period of ten (10) years from date of Substantial Completion.
- B. Insulating glass shall be warranted against visible obstruction through the glass caused by a failure of the insulating glass air seal for a period of twenty (20) years from the date of Substantial Completion.

PART 2 PRODUCTS

2.01 MANUFACTURED UNITS

- A. Basis of Design: Aluminum Clad Polygon Direct Glaze window as manufactured by Marvin Windows and Doors.
- B. Substitutions: See Section 016000 – Product Requirements.

2.02 FRAME DESCRIPTION

- A. Interior: Pine.
 - 1. Clear kiln dried to a moisture content no greater than twelve (12) percent at the time of fabrication.
 - 2. Preservative treated in accordance with WDMA I.S.4. Frame thickness: 1-3/32 inches (30 mm).
- B. Frame width: 4-9/16 inches (116 mm).
- C. Frame exterior clad with 0.055 inch (1.4 mm) thick extruded aluminum.

2.03 GLAZING

- A. Select quality complying with ASTM C 1036. Insulating glass complying with IGMA TM-3000-90(04) - Glazing Guidelines for Sealed Insulating Glass Units; Sealed Insulating Glass Manufacturers Association; 2004. Tempered insulating glass IGMA certified to pass ASTM E 2190.
- B. Glazing method: Insulated glass (Altitude adjusted) at exterior windows and single glazed at interior windows.
- C. Glass Type: Clear; LoE² 272[®] with Argon at exterior windows. Clear without LoE at interior windows. Tempered where required by code or indicated on drawings.
- D. Glazing seal:
 - 1. Interior: Closed cell foam tape.
 - 2. Exterior: Silicone bedding and closed cell foam tape.

2.04 FINISH

- A. Exterior: Fluoropolymer modified acrylic topcoat applied over primer. Meets or exceeds AAMA 2605 requirements.
 - 1. Standard Color: Stone White.
- B. Painted Interior Finish: Factory applied water based acrylic paint over compatible primer. Color – White.

2.05 ACCESSORIES AND TRIM

- A. Installation Accessories:
 - 1. Through jamb installation.
- B. Aluminum Extrusions: Miscellaneous flashing and trim as detailed.
 - 1. Thickness: 0.40 inch thick.
 - 2. Finish: Fluoropolymer modified acrylic topcoat applied over primer. Meets or exceeds AAMA 2605 requirements.
 - a. Standard Color: Stone White.

PART 3 EXECUTION

3.01 EXAMINATION

- A. Verification of Conditions: Before Installation, verify openings are plumb, square, and of proper dimension as required by manufacturer. Report frame defects or unsuitable conditions to the Construction Manager before proceeding.
- B. Acceptance of Conditions: Beginning of installation confirms acceptance of existing conditions.

3.02 INSTALLATION

- A. Assemble and install window units according to manufacturer's instructions and reviewed shop drawings.
- B. Install sealant and related backing materials at perimeter of unit or assembly in accordance with Section 079005 - Joint Sealants.
- C. Install spray polyurethane foam insulation at perimeter shim spaces using extreme care to not overfill.
- D. Install accessory items as required.
- E. Use finish nails to apply wood trim and mouldings.

3.03 CLEANING

- A. Remove visible labels and adhesive residue according to manufacturer's instructions.
- B. Leave windows and glass in a clean condition.

3.04 PROTECTION

- A. Protect windows from damage by chemicals, solvents, paint, or other construction operations that may cause damage.

END OF SECTION

SECTION 085200

ALUMINUM CLAD WOOD WINDOW

PART 1 GENERAL

1.01 SECTION INCLUDES

- A. Aluminum clad wood direct glaze window complete with glazing, jamb extension, and standard or specified anchors, trim, and attachments.

1.02 RELATED SECTIONS

- A. Section 062000—Finish Carpentry: Wood trim other than furnished by window manufacturer
- B. Section 079205—Joint Sealants: Sill sealant and perimeter caulking
- C. Section 099000—Paints and Coatings: Paint or stain other than factory applied finish

1.03 REFERENCES

- A. American Society for Testing and Materials (ASTM):
 - 1. E 283: Standard Test Method for Rate of Air Leakage Through Exterior Windows, Curtain Walls, and Doors.
 - 2. E 330: Standard Test Method for Structural Performance of Exterior Windows, Curtains Walls, and Doors by Uniform Static Air Pressure Difference.
 - 3. E 331: Test Method for Water Penetration of Exterior Windows, Curtain Walls and Doors by Uniform Static Air Pressure Difference
 - 4. E 547: Standard Test Method for Water Penetration of Exterior Windows, Curtain Walls, and Doors by Cyclic Static Air Pressure Differential.
 - 5. E 2190: Specification for Sealed Insulated Glass Units.
 - 6. C 1036: Standard Specification for Flat Glass.
- B. WDMA I.S.4: Industry Standard for Water Repellent Preservative Treatment for Millwork.
- C. American Architectural Manufacturers Association / Window and Door Manufacturers Association (AAMA / WDMA): ANSI / AAMA / WDMA 101 / I.S.2-97 Voluntary Specifications for Aluminum, Vinyl (PVC) and Wood Windows and Glass Doors. and 101 / I.S.2 / NAFS-02 Voluntary Performance Specification for Windows, Skylights and Glass Doors.
- D. Window and Door Manufacturers Association (WDMA): 101 / I.S.2 WDMA Hallmark Certification Program.
- E. IGMA TM-3000-90(04) - Glazing Guidelines for Sealed Insulating Glass Units; Sealed Insulating Glass Manufacturers Association; 2004.
- F. GANA (GM) - GANA Glazing Manual; Glass Association of North America; 2009.
- G. GANA (SM) - GANA Sealant Manual; Glass Association of North America; 2008.
- H. American Architectural Manufacturers Association (AAMA): 2605: Voluntary Specification for High Performance Organic Coatings on Architectural Extrusions and Panels.

- I. National Fenestration Rating Council (NFRC): 101: Procedure for Determining Fenestration Product Thermal Properties.

1.04 SYSTEM DESCRIPTION

- A. Design and Performance Requirements:
 - 1. Window units shall be designed to comply with ANSI / AAMA / WDMA 101 / I.S.2-97; 101 / I.S. 2/ NAFS-02; and AAMA/WDMA/CSA 101/I.S.2/A440-05.
 - a. FW-HC55 frame size 84 X 96 (jamb screw or masonry clip install).
 - 2. Air leakage shall not exceed the following when tested at 6.24 psf according to ASTM E 283:0.30 cfm per square foot of frame.
 - 3. No water penetration when tested at the following pressure according to ASTM E 547 and E 331: 9.0 psf.
 - 4. Assembly shall withstand a positive or negative uniform static air pressure difference of (F-C35 – 52.5) (F-HC60 – 90) psf without damage when tested according to ASTM E 330.

1.05 SUBMITTALS

- A. See Section 013000 - Administrative Requirements, for submittal procedures.
- B. Product Data: Provide data on system materials, product characteristics, performance criteria, and system limitations.
- C. Shop Drawings: Submit drawings indicating opening dimensions, elevations and job specific details for each window type.
- D. Samples:
 - 1. Submit corner section with all specified finishes and options indicated.
 - 2. Include glazing system, quality of construction, and specified finish.
- E. Quality Control Submittals: Certificates: Submit manufacture's certifications indicating compliance with specified performance and design requirements under provisions of Section 01 33 23.
- F. Operations and Maintenance Information: Submit per Section 017800.
- G. Warranty Information: Submit per Section 017800.

1.06 DELIVERY STORAGE AND HANDLING

- A. Deliver in original packaging and protect from weather.
- B. Prime or seal wood surfaces, including surface to be concealed by wall construction, if more than thirty (30) days will expire between delivery and installation.
- C. Store window units in an upright position in a clean and dry storage area above ground and protect from weather and damage.

1.07 WARRANTY

- A. See Section 017800 - Closeout Submittals, for additional warranty requirements.

- A. Windows shall be warranted to be free from defects in manufacturing, materials, and workmanship for a period of ten (10) years from date of Substantial Completion.
- B. Insulating glass shall be warranted against visible obstruction through the glass caused by a failure of the insulating glass air seal for a period of twenty (20) years from the date of Substantial Completion.

PART 2 PRODUCTS

2.01 MANUFACTURED UNITS

- A. Basis of Design: Aluminum Clad Polygon Direct Glaze window as manufactured by Marvin Windows and Doors.
- B. Substitutions: See Section 016000 – Product Requirements.

2.02 FRAME DESCRIPTION

- A. Interior: Pine.
 - 1. Clear kiln dried to a moisture content no greater than twelve (12) percent at the time of fabrication.
 - 2. Preservative treated in accordance with WDMA I.S.4. Frame thickness: 1-3/32 inches (30 mm).
- B. Frame width: 4-9/16 inches (116 mm).
- C. Frame exterior clad with 0.055 inch (1.4 mm) thick extruded aluminum.

2.03 GLAZING

- A. Select quality complying with ASTM C 1036. Insulating glass complying with IGMA TM-3000-90(04) - Glazing Guidelines for Sealed Insulating Glass Units; Sealed Insulating Glass Manufacturers Association; 2004. Tempered insulating glass IGMA certified to pass ASTM E 2190.
- B. Glazing method: Insulated glass (Altitude adjusted) at exterior windows and single glazed at interior windows.
- C. Glass Type: Clear; LoE² 272[®] with Argon at exterior windows. Clear without LoE at interior windows. Tempered where required by code or indicated on drawings.
- D. Glazing seal:
 - 1. Interior: Closed cell foam tape.
 - 2. Exterior: Silicone bedding and closed cell foam tape.

2.04 FINISH

- A. Exterior: Fluoropolymer modified acrylic topcoat applied over primer. Meets or exceeds AAMA 2605 requirements.
 - 1. Standard Color: Stone White.
- B. Painted Interior Finish: Factory applied water based acrylic paint over compatible primer. Color – White.

2.05 ACCESSORIES AND TRIM

- A. Installation Accessories:
 - 1. Through jamb installation.
- B. Aluminum Extrusions: Miscellaneous flashing and trim as detailed.
 - 1. Thickness: 0.40 inch thick.
 - 2. Finish: Fluoropolymer modified acrylic topcoat applied over primer. Meets or exceeds AAMA 2605 requirements.
 - a. Standard Color: Stone White.

PART 3 EXECUTION

3.01 EXAMINATION

- A. Verification of Conditions: Before Installation, verify openings are plumb, square, and of proper dimension as required by manufacturer. Report frame defects or unsuitable conditions to the Construction Manager before proceeding.
- B. Acceptance of Conditions: Beginning of installation confirms acceptance of existing conditions.

3.02 INSTALLATION

- A. Assemble and install window units according to manufacturer's instructions and reviewed shop drawings.
- B. Install sealant and related backing materials at perimeter of unit or assembly in accordance with Section 079005 - Joint Sealants.
- C. Install spray polyurethane foam insulation at perimeter shim spaces using extreme care to not overfill.
- D. Install accessory items as required.
- E. Use finish nails to apply wood trim and mouldings.

3.03 CLEANING

- A. Remove visible labels and adhesive residue according to manufacturer's instructions.
- B. Leave windows and glass in a clean condition.

3.04 PROTECTION

- A. Protect windows from damage by chemicals, solvents, paint, or other construction operations that may cause damage.

END OF SECTION

REVISIONS SCHEDULE		
MARK	DATE	DESCRIPTION
A3.2	4.19.13	Revision 1

EAGLE RIDGE HOUSING
FINAL GMP SET

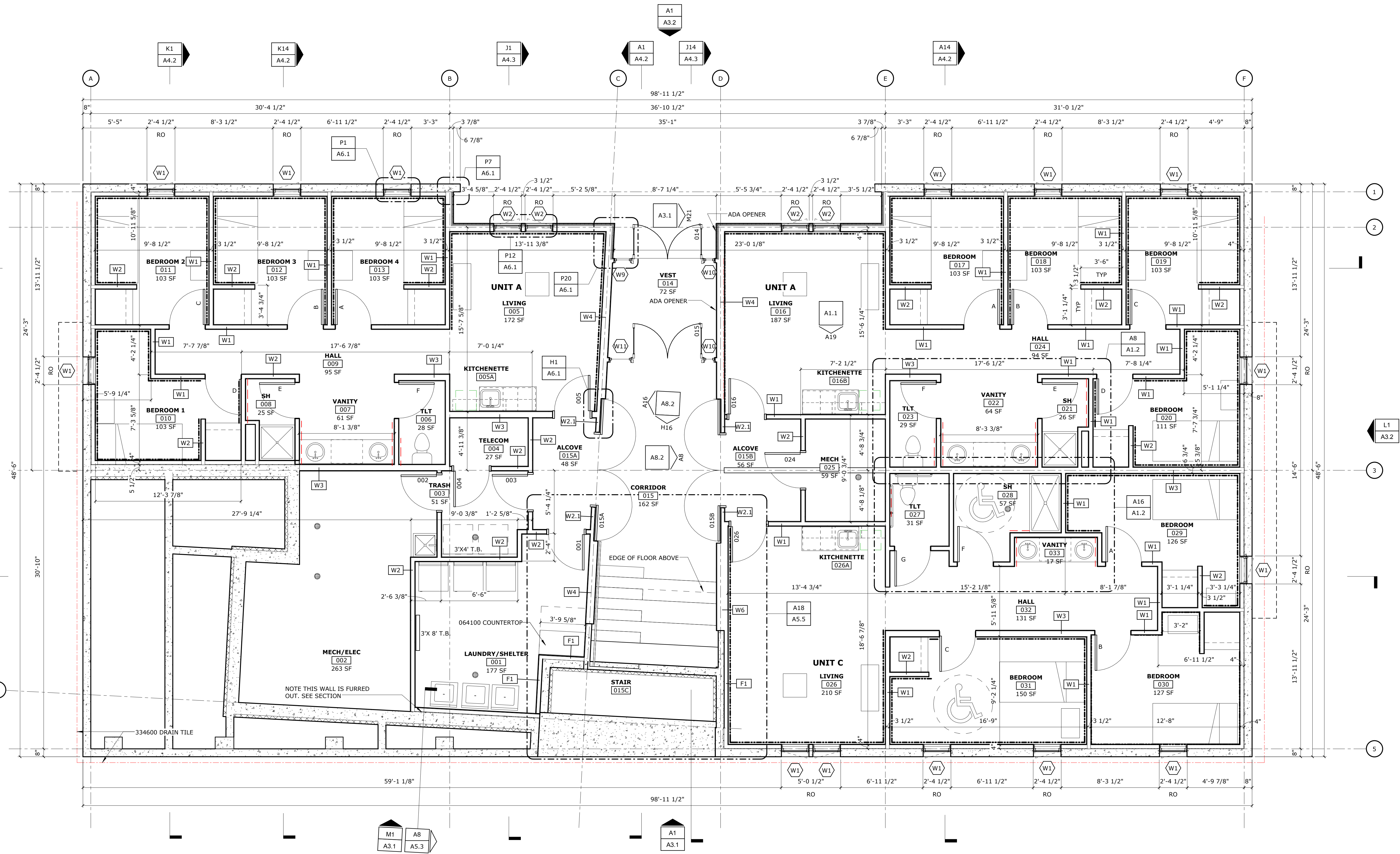
PROJECT: #L12007 DATE: 04.29.2013
© COPYRIGHT BVH ARCHITECTS

GMP SET
NOT FOR CONSTRUCTION

LOWER LEVEL PLAN



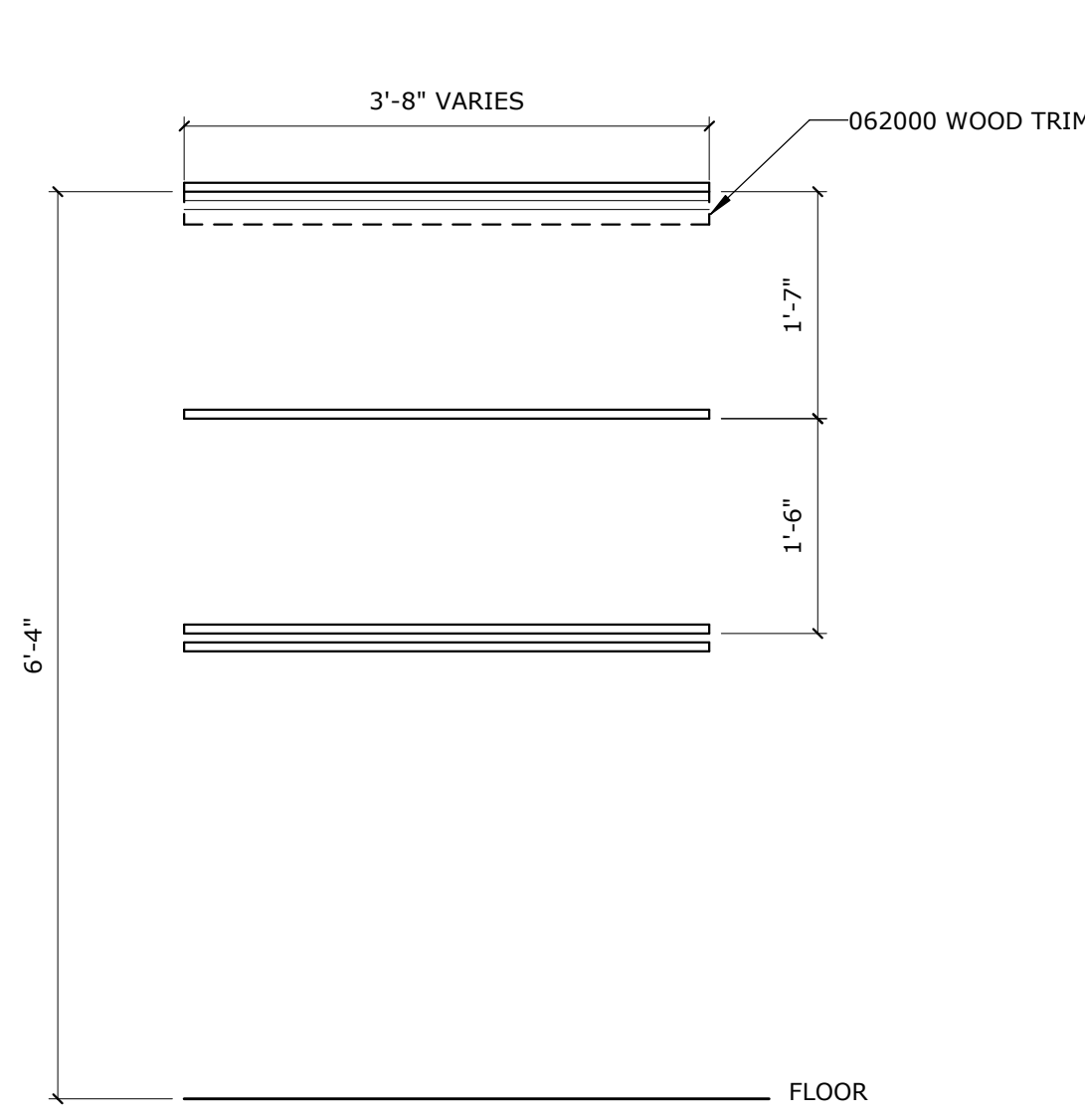
A1.1



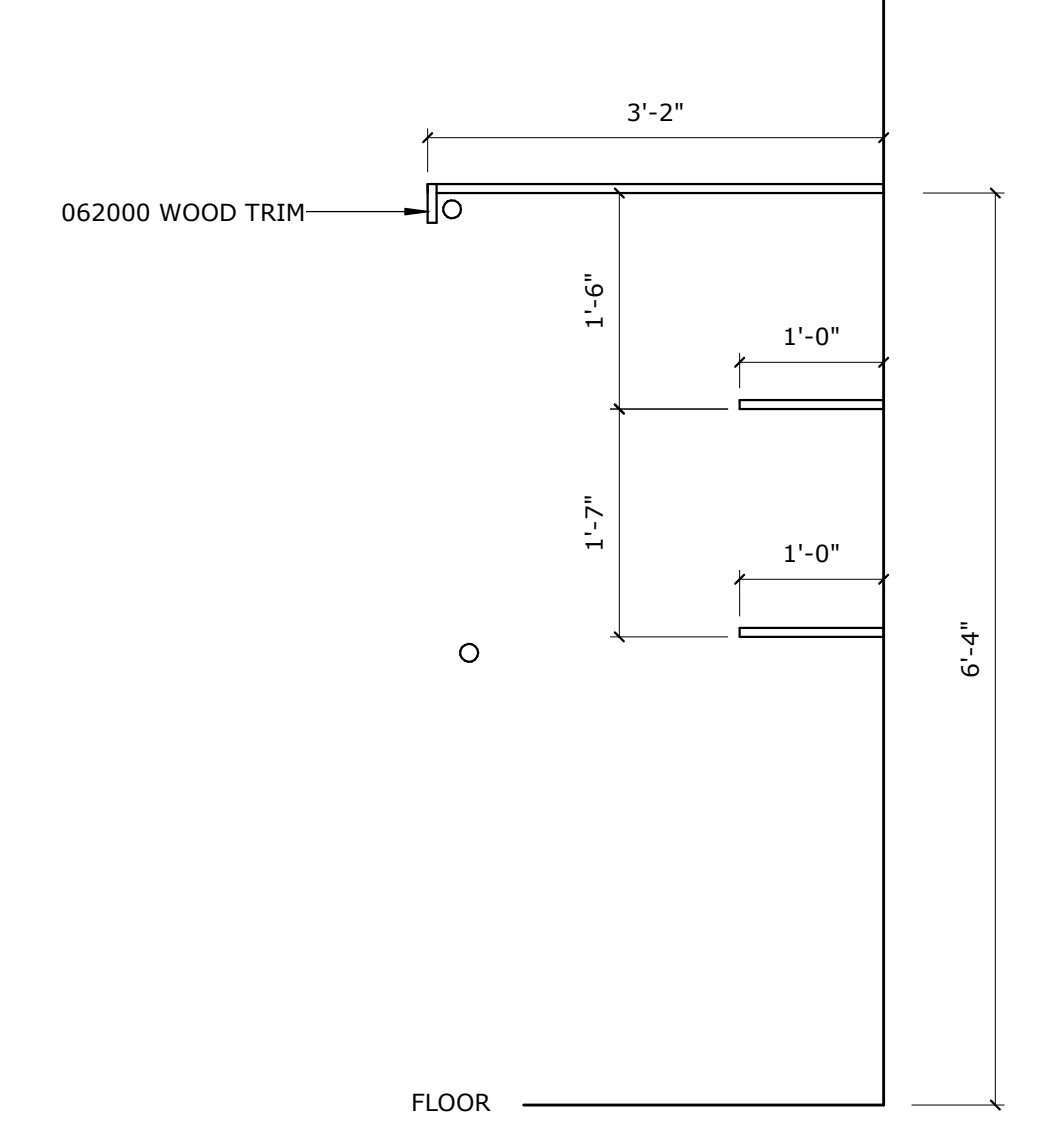
NOTES

- 3/4" x 1 3/4" (actual) CHAIR RAIL
- BLOCKING FOR BATH ACCESSORIES. COORDINATE EXACT LOCATION OF ACCESSORIES WITH OWNER
- NOTE THIS WALL IS FURRED OUT. SEE SECTION
- 334600 DRAIN TILE

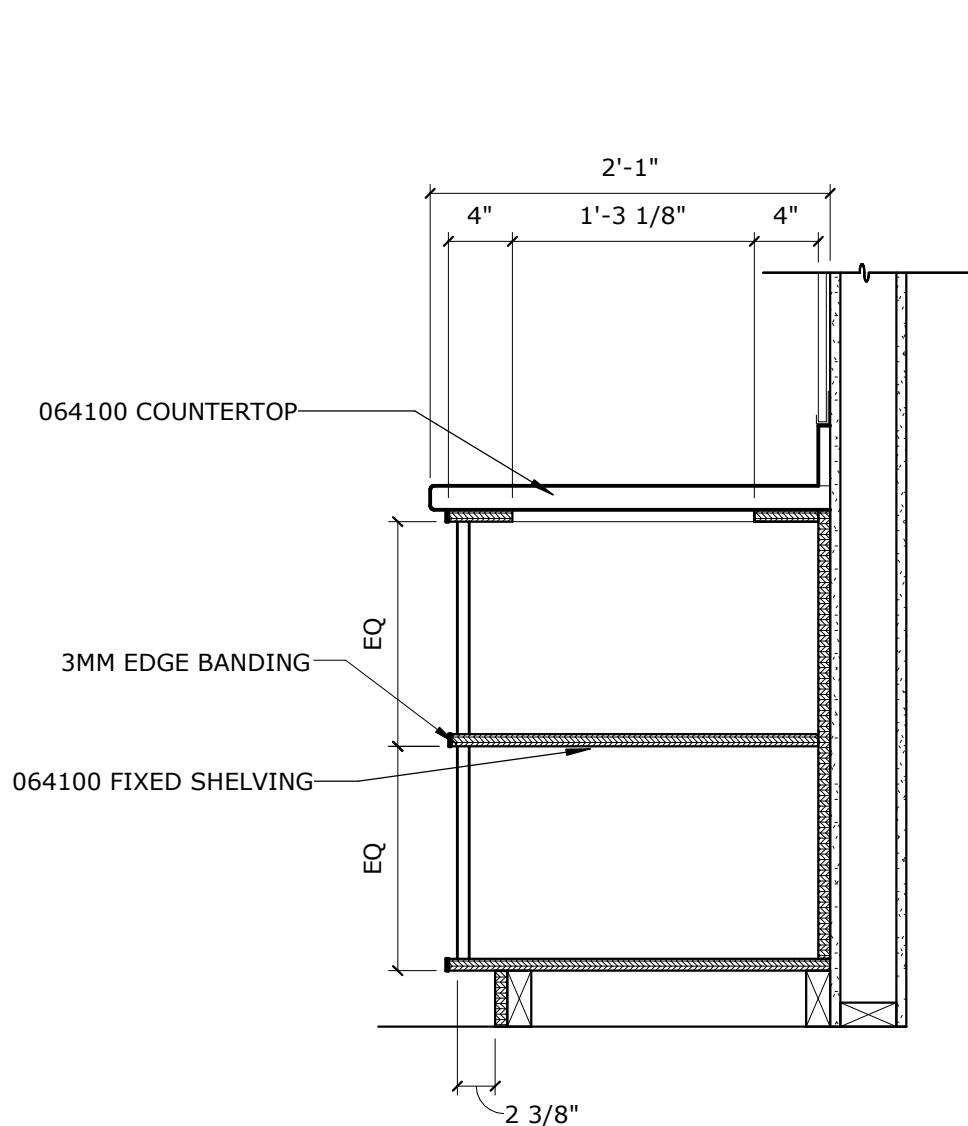
G5 00 - LOWER LEVEL
1/4" = 1'-0"



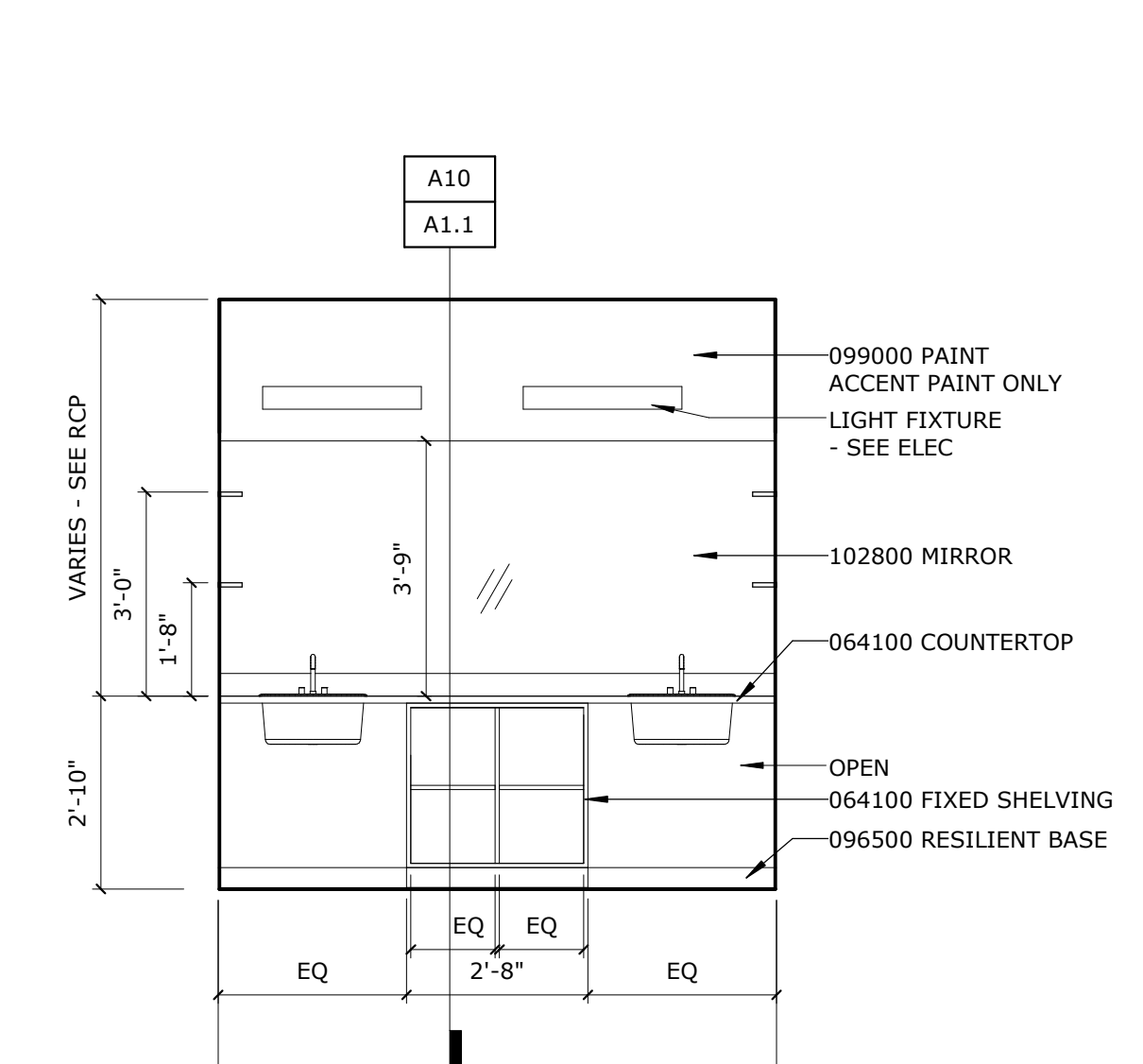
A1 TYP BEDROOM UNIT CLOSET ELEV
3/4" = 1'-0"



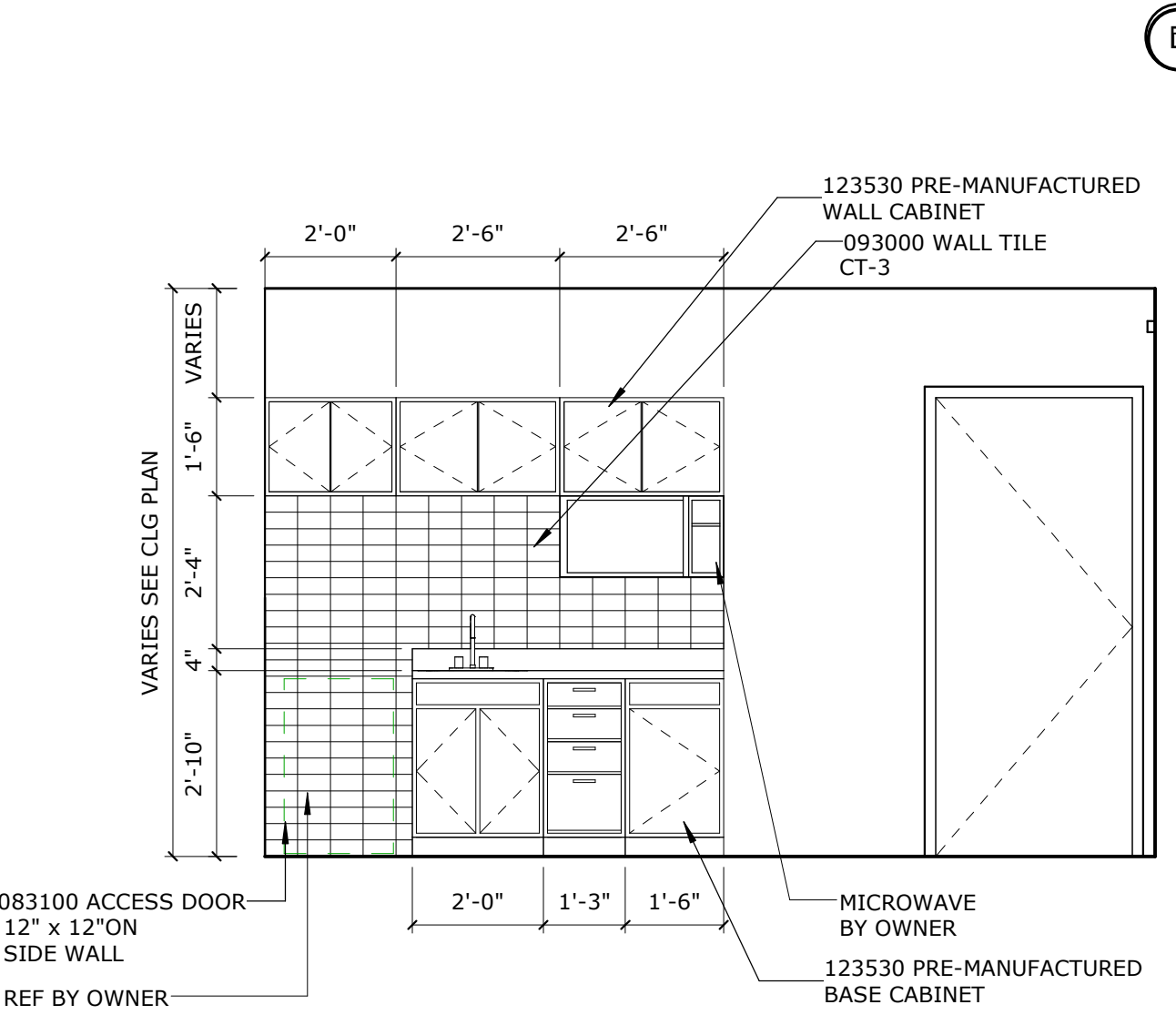
A6 TYP BEDROOM UNIT CLOSET SECTION
3/4" = 1'-0"



A10 TYP VANITY SECTION
1" = 1'-0"



A14 TYPICAL VANITY
3/8" = 1'-0"



A19 TYPICAL KITCHEN
3/8" = 1'-0"

REVISIONS SCHEDULE		
MARK	DATE	DESCRIPTION
4.19.13		Revision 1

**EAGLE RIDGE HOUSING
FINAL GMP SET**

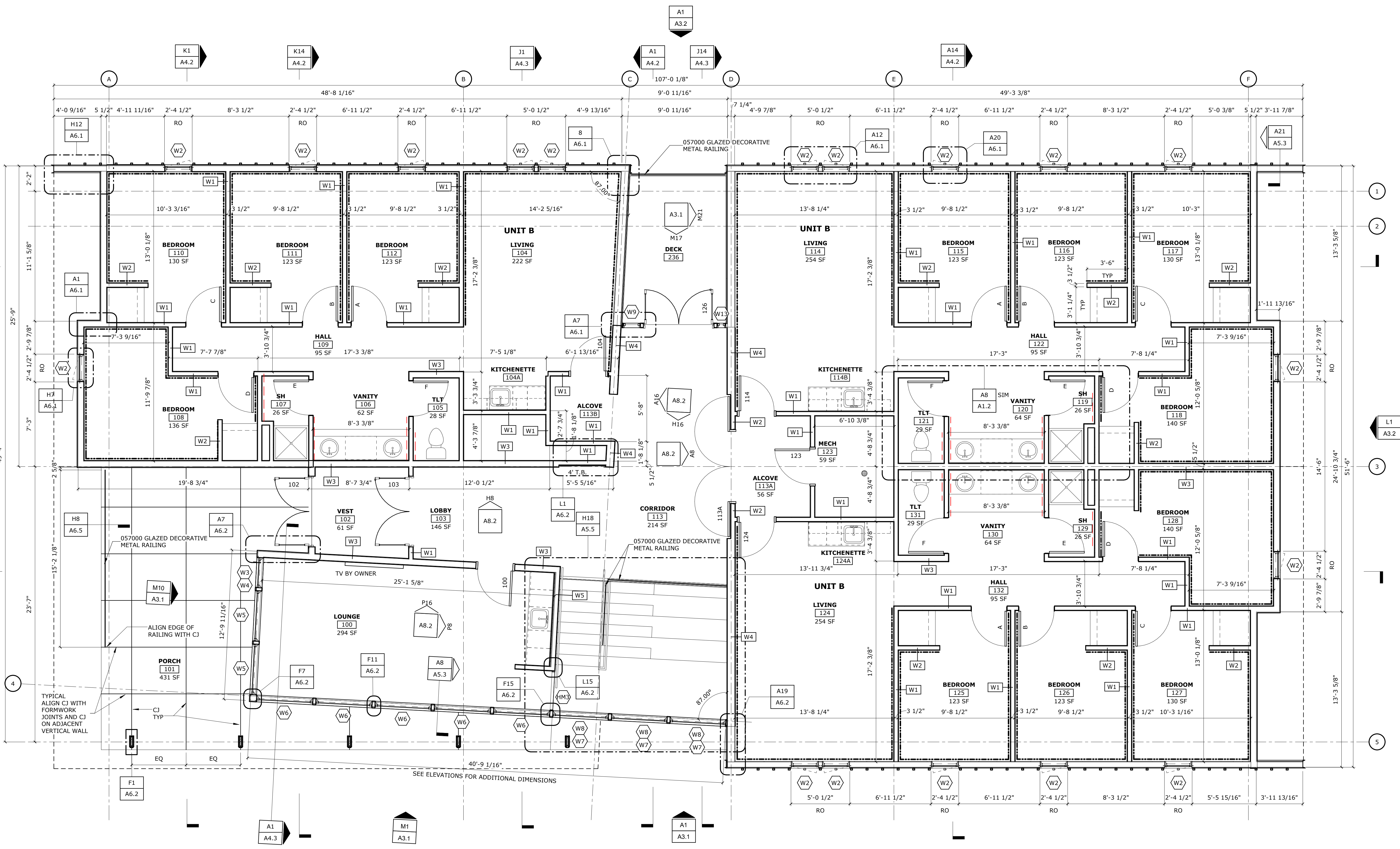
PROJECT: #112007 DATE: 04.29.2013
© COPYRIGHT BVH ARCHITECTS

**GMP SET
NOT FOR CONSTRUCTION**

UPPER LEVEL PLAN



A1.2

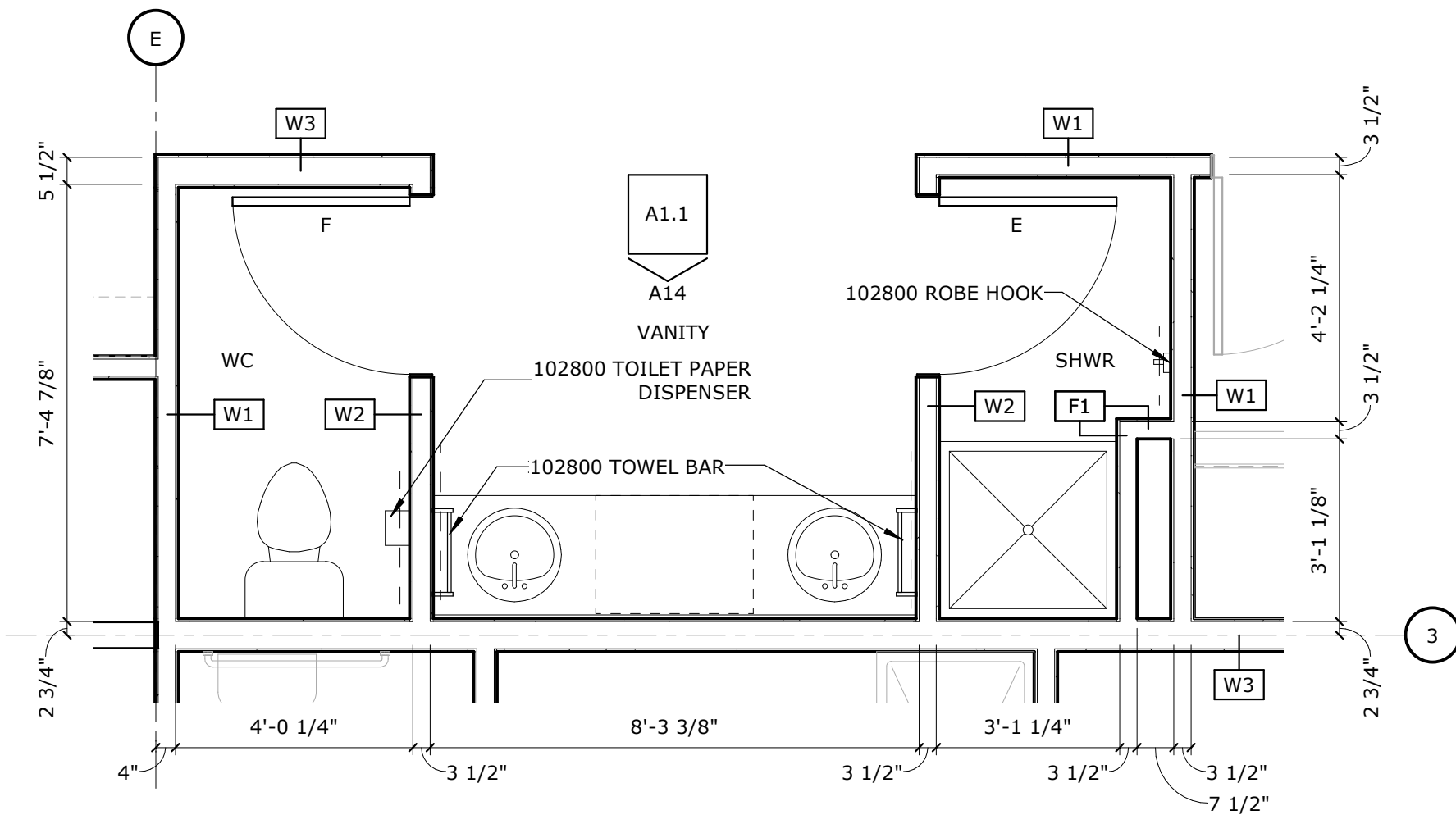


F3 FIRST FLOOR PLAN
1/4" = 1'-0"

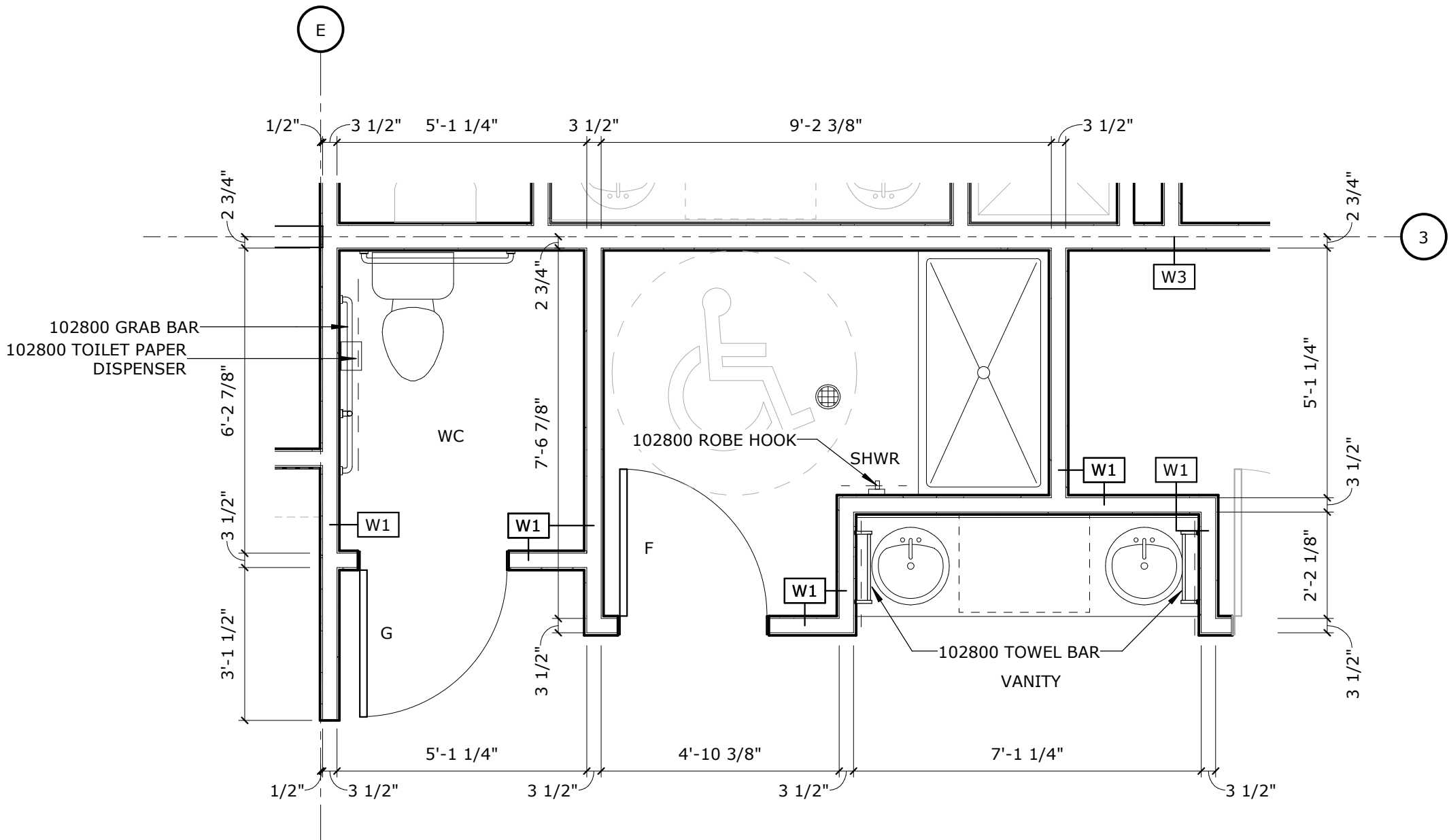
NOTES

- 3/4" x 1 3/4" (actual) CHAIR RAIL
- - - - - BLOCKING FOR BATH ACCESSORIES. COORDINATE EXACT LOCATION OF ACCESSORIES WITH OWNER.

A8 ENLARGED PLAN - BATHROOM
3/8" = 1'-0"



A16 ENLARGED PLAN - ADA BATHROOM
3/8" = 1'-0"





ARCHITECT
BAHR VERMEER HAECKER ARCHITECTS
440 N 8TH ST STE 100
LINCOLN NE 68508
V 402 475 4551
F 402 475 0226
bvh.com



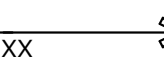
STRUCTURAL ENGINEER
THE CLARK ERIKSEN PARTNERS
1010 LINCOLN MALL, STE 200
LINCOLN NE 68508
V 402 477 9291
F 402 477 6542
clarkensens.com

MEP ENGINEER
OLSSON ASSOCIATES
1111 LINCOLN MALL, STE 111
LINCOLN NE 68508
V 402 474 6311
F 402 474 5063
olssonassociates.com

LANDSCAPE ARCHITECT
THE CLARK ERIKSEN PARTNERS
1010 LINCOLN MALL, STE 200
LINCOLN NE 68508
V 402 477 9291
F 402 477 6542
clarkensens.com

CIVIL ENGINEER
OLSSON ASSOCIATES
1111 LINCOLN MALL, STE 111
LINCOLN NE 68508
V 402 474 6311
F 402 474 5063
olssonassociates.com

ROOF PLAN LEGEND

-  METAL BATTEN ROOF
-  PERFORATED METAL WITH BATTENS
SEE DETAIL THIS SHEET
-  RELATIVE SLOPE

GENERAL NOTES:

PROVIDE 6" MIN. CLEARANCE AT ALL CURBS, PARAPETS, AND FLASHINGS ABOVE THE ROOF TO WALL TRANSITION UNO.
SEE STRICT FOR FRAMING REQUIREMENTS AROUND ROOF PENETRATIONS AND EQUIPMENT.
COORDINATE SIZE AND LOCATIONS OF ALL ROOF PENETRATIONS AND EQUIPMENT. SEE MECH AND ELEC DRAWINGS FOR ANY EQUIPMENT NOT SHOWN. FLASH AND SEAL ALL EQUIPMENT AND TRANSITIONS PER ROOFING MFR'S RECOMMENDATIONS.
ROOFING PENETRATIONS ARE NOT ALLOWED WITHIN 60" OF ALL 2 HOUR AREA SEPERATION AND RATED WALLS. SEE CODE PLAN.

REVISIONS SCHEDULE		
MARK	DATE	DESCRIPTION
4	19.13	Revision 1

EAGLE RIDGE HOUSING FINAL GMP SET

PROJECT: #112007 DATE: 04.29.2013
© COPYRIGHT BAH VERMEER HAECKER ARCHITECTS

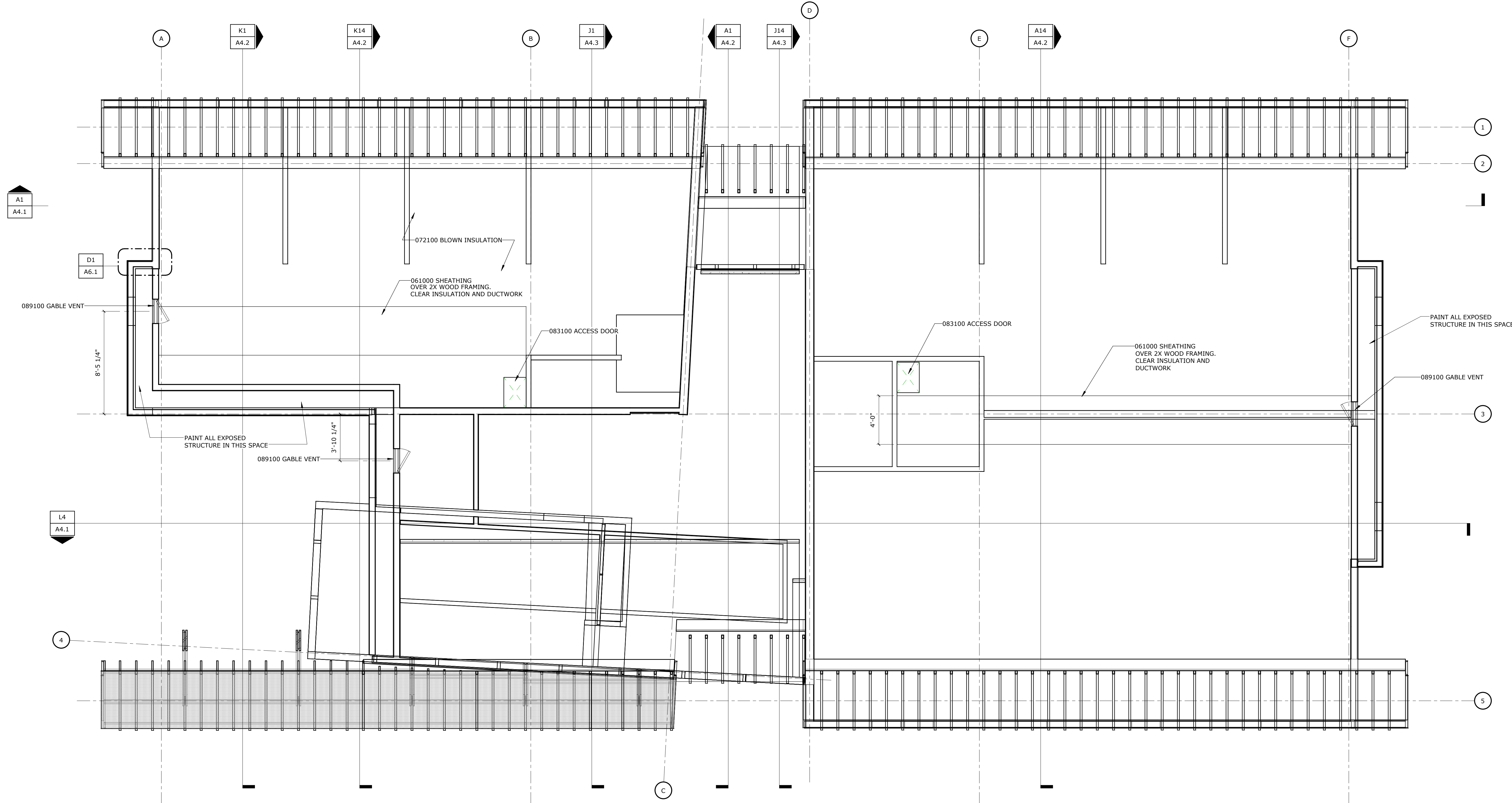
GMP SET
NOT FOR CONSTRUCTION

ATTIC PLAN



A1.3

A2 02 - ATTIC
1/4" = 1'-0"





ARCHITECT
 BAHR VERMEER HAECKER ARCHITECTS
 440 N 8TH ST STE 100
 LINCOLN NE 68508
 V 402 475 4551
 F 402 475 0226
 bvh.com

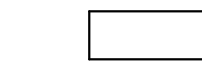


STRUCTURAL ENGINEER
 THE CLARK ENERSEN PARTNERS
 1010 LINCOLN MALL, STE 200
 LINCOLN NE 68508
 V 402 477 9291
 F 402 477 6542
 clarkenersen.com

MEP ENGINEER
 OLSSON ASSOCIATES
 1111 LINCOLN MALL, STE 111
 LINCOLN NE 68508
 V 402 474 6311
 F 402 474 5063
 olssonassociates.com

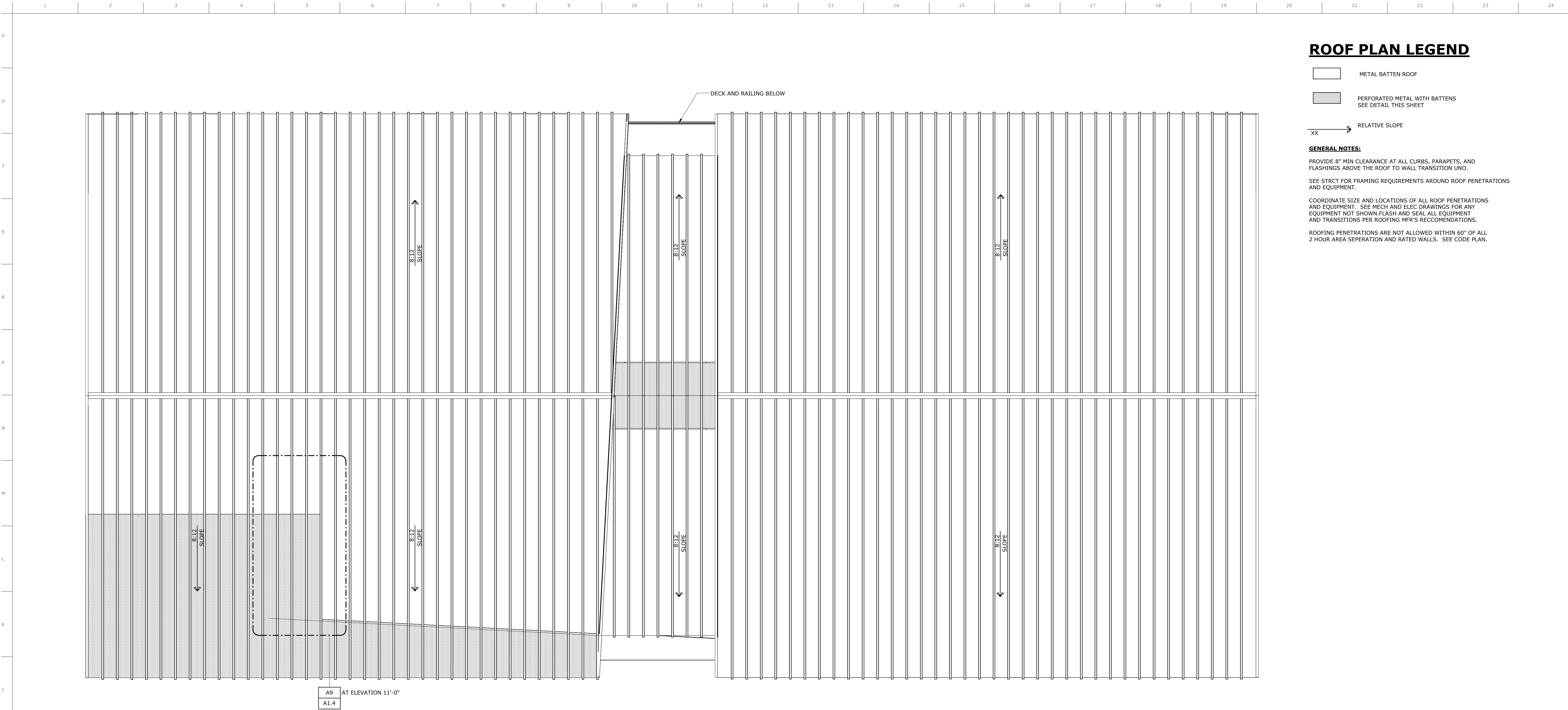
LANDSCAPE ARCHITECT
 THE CLARK ENERSEN PARTNERS
 1010 LINCOLN MALL, STE 200
 LINCOLN NE 68508
 V 402 477 9291
 F 402 477 6542
 clarkenersen.com

CIVIL ENGINEER
 OLSSON ASSOCIATES
 1111 LINCOLN MALL, STE 111
 LINCOLN NE 68508
 V 402 474 6311
 F 402 474 5063
 olssonassociates.com

ROOF PLAN LEGEND

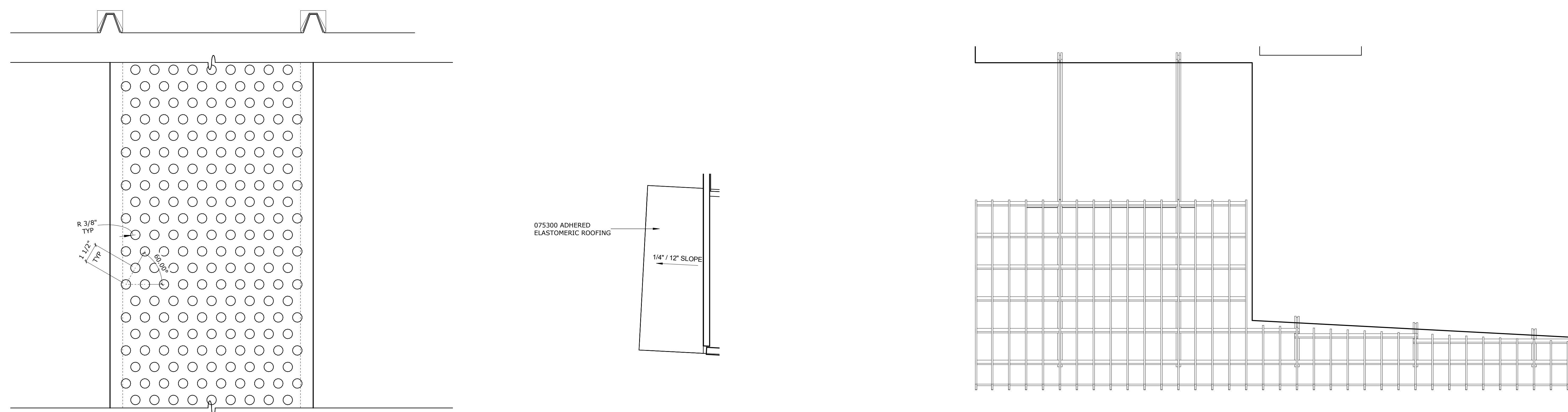
-  METAL BATTEN ROOF
-  PERFORATED METAL WITH BATTENS
SEE DETAIL THIS SHEET
-  RELATIVE SLOPE

GENERAL NOTES:
 PROVIDE 8" MIN CLEARANCE AT ALL CURBS, PARAPETS, AND FLASHINGS ABOVE THE ROOF TO WALL TRANSITION UNO.
 SEE STRCT FOR FRAMING REQUIREMENTS AROUND ROOF PENETRATIONS AND EQUIPMENT.
 COORDINATE SIZE AND LOCATIONS OF ALL ROOF PENETRATIONS AND EQUIPMENT. SEE MECH AND ELEC DRAWINGS FOR ANY EQUIPMENT NOT SHOWN. FLASH AND SEAL ALL EQUIPMENT AND TRANSITIONS PER ROOFING MFR'S RECOMMENDATIONS.
 ROOFING PENETRATIONS ARE NOT ALLOWED WITHIN 60" OF ALL 2 HOUR AREA SEPERATION AND RATED WALLS. SEE CODE PLAN.



REVISIONS SCHEDULE		
MARK	DATE	DESCRIPTION
A1.4	4.19.13	Revision 1

H1 03 - ROOF LEVEL
 1/4" = 1'-0"



A1 DETAIL AT PERFORATED METAL
 3" = 1'-0"

A9 03 - ROOF LEVEL - LOUNGE
 1/4" = 1'-0"

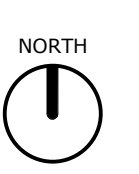
A14 03 - ROOF LEVEL- PORCH FRAMING
 1/4" = 1'-0"

EAGLE RIDGE HOUSING
 FINAL GMP SET

PROJECT: #112007 DATE: 04.29.2013
 © COPYRIGHT BAH ARCHITECTS

GMP SET
 NOT FOR CONSTRUCTION

ROOF PLANS



A1.4



ARCHITECT
 BAHR VERMEER HAECKER ARCHITECTS
 440 N 8TH ST STE 100
 LINCOLN NE 68508
 V 402 475 4551
 F 402 475 0226
 bvh.com

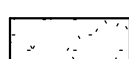
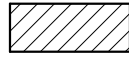


STRUCTURAL ENGINEER
 THE CLARK ERIKSEN PARTNERS
 1010 LINCOLN MALL, STE 200
 LINCOLN NE 68508
 V 402 477 9291
 F 402 477 6542
 clarkensers.com

MEP ENGINEER
 OLSSON ASSOCIATES
 1111 LINCOLN MALL, STE 111
 LINCOLN NE 68508
 V 402 474 6311
 F 402 474 5063
 olssonassociates.com

LANDSCAPE ARCHITECT
 THE CLARK ERIKSEN PARTNERS
 1010 LINCOLN MALL, STE 200
 LINCOLN NE 68508
 V 402 477 9291
 F 402 477 6542
 clarkensers.com

CIVIL ENGINEER
 OLSSON ASSOCIATES
 1111 LINCOLN MALL, STE 111
 LINCOLN NE 68508
 V 402 474 6311
 F 402 474 5063
 olssonassociates.com

RCP FINISHES LEGEND

-  GYPSUM BOARD
 LOWER LEVEL: 8'-8" AFF UNO. APPLIED TO BOTTOM OF FLOOR TRUSS WITH RESILIENT CHANNEL
 FIRST FLOOR: 9'-4 3/4" AFF UNO. APPLIED TO BOTTOM OF ROOF TRUSS WITH RESILIENT CHANNEL
-  SUSPENDED GYPSUM BOARD. NO GYPSUM BOARD ON FRAMING ABOVE
-  GYPSUM BOARD SUSPENDED FROM FLOOR TRUSS WITH GYP BOARD APPLIED WITH RESILIENT CHANNEL TO FLOOR TRUSS ABOVE FOR FLOOR RATTING
-  072400 COMPOSITE SOFFITT SYSTEM

GENERAL NOTES:
 ALL EQUIPMENT, DEVICES, AND FIXTURES SHALL BE CENTERED IN THE CEILING TILE UNLESS NOTED OTHERWISE.



REVISIONS SCHEDULE		
MARK	DATE	DESCRIPTION
4	19.13	Revision 1

EAGLE RIDGE HOUSING
 FINAL GMP SET

PROJECT: #L12007 DATE: 04.29.2013
 © COPYRIGHT BAHR VERMEER HAECKER ARCHITECTS

GMP SET
 NOT FOR CONSTRUCTION

LOWER LEVEL RCP



A2.1

A3_00 - LOWER LEVEL REFLECTED CEILING PLAN
 1/4" = 1'-0"



ARCHITECT
 BAHR VERMEER HAECKER ARCHITECTS
 440 N 8TH ST STE 100
 LINCOLN NE 68508
 V 402 475 4551
 F 402 475 0226
 bvh.com

STRUCTURAL ENGINEER
 THE CLARK ENERSEN PARTNERS
 1010 LINCOLN MALL, STE 200
 LINCOLN NE 68508
 V 402 477 9291
 F 402 477 6542
 clarkenersen.com

MEP ENGINEER
 OLSSON ASSOCIATES
 1111 LINCOLN MALL, STE 111
 LINCOLN NE 68508
 V 402 474 6311
 F 402 474 5063
 olssonassociates.com

LANDSCAPE ARCHITECT
 THE CLARK ENERSEN PARTNERS
 1010 LINCOLN MALL, STE 200
 LINCOLN NE 68508
 V 402 477 9291
 F 402 477 6542
 clarkenersen.com

CIVIL ENGINEER
 OLSSON ASSOCIATES
 1111 LINCOLN MALL, STE 111
 LINCOLN NE 68508
 V 402 474 6311
 F 402 474 5063
 olssonassociates.com

RCP FINISHES LEGEND

- GYPSUM BOARD LOWER LEVEL: 8'-8" AFF UNO. APPLIED TO BOTTOM OF FLOOR TRUSS WITH RESILIENT CHANNEL.
- GYPSUM BOARD FIRST FLOOR: 9'-4 3/4" AFF UNO. APPLIED TO BOTTOM OF ROOF TRUSS WITH RESILIENT CHANNEL.
- SUSPENDED GYPSUM BOARD. NO GYPSUM BOARD ON FRAMING ABOVE.
- GYPSUM BOARD SUSPENDED FROM FLOOR TRUSS WITH GYP BOARD APPLIED WITH RESILIENT CHANNEL TO FLOOR TRUSS ABOVE FOR FLOOR RATING.
- 072400 COMPOSITE SOFFITT SYSTEM.

GENERAL NOTES:

ALL EQUIPMENT, DEVICES, AND FIXTURES SHALL BE CENTERED IN THE CEILING TILE UNLESS NOTED OTHERWISE.



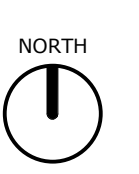
REVISIONS SCHEDULE		
MARK	DATE	DESCRIPTION
1	4.19.13	Revision 1

EAGLE RIDGE HOUSING
 FINAL GMP SET

PROJECT: #L12007 DATE: 04.29.2013
 © COPYRIGHT BAHR VERMEER HAECKER ARCHITECTS

GMP SET
 NOT FOR CONSTRUCTION

UPPER LEVEL RCP



A2.2

A3 01 - FIRST FLOOR REFLECTED CEILING PLAN
 1/4" = 1'-0"



ARCHITECT
BAHR VERMEER HAECKER ARCHITECTS
440 N 8TH ST STE 100
LINCOLN NE 68508
V 402 475 4555
F 402 475 0226
bvh.com

STRUCTURAL ENGINEER
THE CLARK ENSENEN PARTNERS
1010 LINCOLN MALL, STE 200
LINCOLN NE 68508
V 402 477 9291
F 402 477 6542
clarkensenen.com

MEP ENGINEER
OLSSON ASSOCIATES
1111 LINCOLN MALL, STE 111
LINCOLN NE 68508
V 402 474 6311
F 402 474 5063
olssonassociates.com

LANDSCAPE ARCHITECT
THE CLARK ENSENEN PARTNERS
1010 LINCOLN MALL, STE 200
LINCOLN NE 68508
V 402 477 9291
F 402 477 6542
clarkensenen.com

CIVIL ENGINEER
OLSSON ASSOCIATES
1111 LINCOLN MALL, STE 111
LINCOLN NE 68508
V 402 474 6311
F 402 474 5063
olssonassociates.com

REVISIONS SCHEDULE		
MARK	DATE	DESCRIPTION
4.19.13		Revision 1

EAGLE RIDGE HOUSING
FINAL GMP SET

PROJECT: #L12007 DATE: 04.29.2013
© COPYRIGHT BAHR VERMEER HAECKER ARCHITECTS

GMP SET
NOT FOR CONSTRUCTION

FLOOR FINISH PLANS

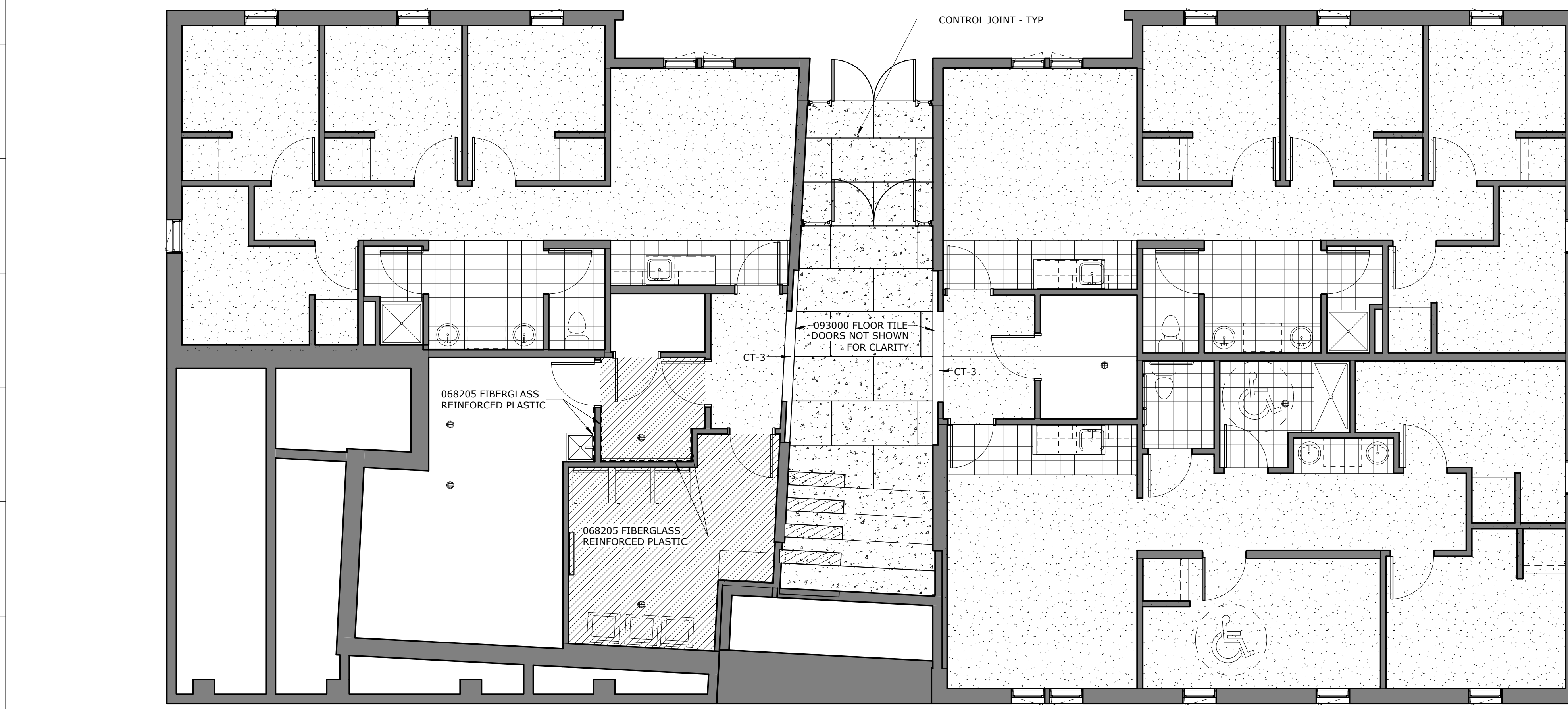
NORTH
A8.1

FINISHES LEGEND

- TILE (TYPE AND SIZE VARIES)
 - CARPET
 - SEALED CONCRETE
 - ACID ETCHED CONCRETE
 - WOOD
 - RESILIENT FLOORING
- ALL UNIT WINDOWS RECEIVE BLINDS.
LOUNGE TO RECEIVE SHADES.

ROOM #	ROOM NAME	FLOOR FINISH	BASE FINISH	ROOM FINISH SCHEDULE		COMMENTS
				WALL FINISH	CEILING FINISH	
001	LAUNDRY/SHELTER	RF	RB-1	P-2	GYP/P-1	
002	MECH/ELEC	SEALED CONC	RB-1	P-2	GYP/P-1	FRP AT MOP SINK
003	TRASH	RF-1	RB-1	P-2/FRP	GYP/P-1	FRP AT TRASH WALL
004	TELECOM	SEALED CONC	RB-1	P-2	GYP/P-1	
005	LIVING	CPT-2	RB-1	P-2	GYP/P-1	
005A	KITCHENETTE	CT-2	CT-3	P-2/CT-1	GYP/P-1	TILE BACKSPLASH
006	TLT	CT-2	CT-3	P-2	GYP/P-1	
007	VANITY	CT-2	CT-3	P-2	GYP/P-1	
008	SH	CT-2	CT-3	P-2	GYP/P-1	
009	HALL	CPT-1	RB-1	P-2	GYP/P-1	
010	BEDROOM 1	CPT-1	RB-1	P-2	GYP/P-1	
011	BEDROOM 2	CPT-1	RB-1	P-2	GYP/P-1	
012	BEDROOM 3	CPT-1	RB-1	P-2	GYP/P-1	
013	BEDROOM 4	CPT-1	RB-1	P-2	GYP/P-1	
014	VEST	CONC	RB-1	P-2	GYP/P-1	CONC FLOOR IS ACID ETCHED. WALL & CLG GYP FINISH LVL 5
015	CORRIDOR	CONC	RB-2	P-2	GYP/P-1	CONC FLOOR IS ACID ETCHED. WALL & CLG GYP FINISH LVL 5
015A	ALCOVE	CPT-2	RB-2	P-2	GYP/P-1	
015B	ALCOVE	CPT-2	RB-2	P-2	GYP/P-1	
015C	STAIR	CONC	GYP	P-2	GYP/P-1	CONC FLOOR IS ACID ETCHED. WALL & CLG GYP FINISH LVL 5
016	LIVING	CPT-1	RB-1	P-2	GYP/P-1	
016B	KITCHENETTE	CT-2	CT-3	P-2/CT-1	GYP/P-1	
017	BEDROOM	CPT-1	RB-1	P-2	GYP/P-1	
018	BEDROOM	CPT-1	RB-1	P-2	GYP/P-1	
019	BEDROOM	CPT-1	RB-1	P-2	GYP/P-1	
020	BEDROOM	CPT-1	RB-1	P-2	GYP/P-1	
021	SH	CT-2	CT-3	P-2	GYP/P-1	
022	VANITY	CT-2	CT-3	P-2	GYP/P-1	
023	TLT	CT-2	CT-3	P-2	GYP/P-1	
024	HALL	CPT-2	RB-2	P-2	GYP/P-1	
025	MECH	SEALED CONC	RB-1	P-2	GYP/P-1	
026	LIVING	CPT-1	RB-1	P-2	GYP/P-1	
026A	KITCHENETTE	CT-2	CT-3	P-2/CT-1	GYP/P-1	
027	TLT	CT-2	CT-3	P-2	GYP/P-1	
028	SH	CT-2	CT-3	P-2	GYP/P-1	
029	BEDROOM	CPT-1	RB-1	P-2	GYP/P-1	
030	BEDROOM	CPT-1	RB-1	P-2	GYP/P-1	
031	BEDROOM	CPT-1	RB-1	P-2	GYP/P-1	
032	HALL	CPT-1	RB-1	P-2	GYP/P-1	
033	VANITY	CT-2	GYP	P-2	GYP/P-1	
100	LOUNGE	CPT-2	RB-2	P-2/BRICK	GYP/P-1	WALL & CLG GYP FINISH LVL 5
102	VEST	WOC	RB-2	P-2	GYP/P-1	WALL & CLG GYP FINISH LVL 5
103	LOBBY	CPT-2	RB-2	P-2	GYP/P-1	WALL & CLG GYP FINISH LVL 5
104	LIVING	CPT-1	RB-2	P-2	GYP/P-1	WALL & CLG GYP FINISH LVL 5
104A	KITCHENETTE	CT-2	CT-3	P-2	GYP/P-1	
105	TLT	CT-2	CT-3	P-2	GYP/P-1	
106	VANITY	CT-2	CT-3	P-2	GYP/P-1	
107	SH	CT-2	CT-3	P-2	GYP/P-1	
108	BEDROOM	CPT-1	RB-1	P-2	GYP/P-1	
109	HALL	CPT-1	RB-1	P-2	GYP/P-1	
110	BEDROOM	CPT-1	RB-1	P-2	GYP/P-1	
111	BEDROOM	CPT-1	RB-1	P-2	GYP/P-1	
112	BEDROOM	CPT-1	RB-1	P-2	GYP/P-1	
113	CORRIDOR	CPT-2	RB-2	P-2	GYP/P-1	WALL & CLG GYP FINISH LVL 5
113A	ALCOVE	CPT-2	RB-2	P-2	GYP/P-1	
113B	ALCOVE	CPT-2	RB-2	P-2	GYP/P-1	
114	LIVING	CPT-2	RB-2	P-2	GYP/P-1	
114B	KITCHENETTE	CT-2	CT-3	P-2	GYP/P-1	
115	BEDROOM	CPT-1	RB-1	P-2	GYP/P-1	
115A	ALCOVE	CPT-2	RB-2	P-2	GYP/P-1	
116	BEDROOM	CPT-1	RB-1	P-2	GYP/P-1	
117	BEDROOM	CPT-1	RB-1	P-2	GYP/P-1	
118	BEDROOM	CPT-1	RB-1	P-2	GYP/P-1	
119	SH	CT-2	GYP	P-2	GYP/P-1	
120	VANITY	CT-2	CT-3	P-2	GYP/P-1	
121	TLT	CT-2	CT-3	P-2	GYP/P-1	
122	HALL	CPT-1	RB-1	P-2	GYP/P-1	
123	MECH	SEALED CONC	RB-1	P-2	GYP/P-1	
124	LIVING	CPT-1	RB-2	P-2	GYP/P-1	
124A	KITCHENETTE	CT-2	CT-3	P-2	GYP/P-1	
125	BEDROOM	CPT-1	RB-1	P-2	GYP/P-1	
126	BEDROOM	CPT-1	RB-1	P-2	GYP/P-1	
127	BEDROOM	CPT-1	RB-1	P-2	GYP/P-1	
128	BEDROOM	CPT-1	RB-1	P-2	GYP/P-1	
129	SH	CT-2	CT-3	P-2	GYP/P-1	
130	VANITY	CT-2	CT-3	P-2	GYP/P-1	
131	TLT	CT-2	CT-3	P-2	GYP/P-1	
132	HALL	CPT-1	RB-1	P-2	GYP/P-1	

NOTE: ALL ROOMS TO RECEIVE ORANGE PEEL FINISH ON WALLS AND CEILING UNLESS NOTED OTHERWISE.



K1 00 - LOWER LEVEL FINISH PLAN
3/16" = 1'-0"

MATERIALS LIST

REFER TO PROJECT MANUAL FOR DIVISION SPECIFICATIONS

Plastic Laminate (PL): Section 064100

PL-1 Formica
Color: TBD
Finish: Standard
Edge: to match face material
Location: Vertical casework -Vanity

PL-2 Formica
Color: TBD
Finish: Standard
Edge: to match face material
Location: Vanity countertop

See Section 123530 for Laminate counter tops for Merillat cabinets

Solid Polymer Fabrication/Surface (SS): Section 064100

SS-1 Cambria Quartz
Color: TBD
Finish: Matte
Edges: eased
Location: Countertop in Lounge

Porcelain Tile (CT): Section 093000

CT-1 USCT
Type: Matte Series
Size: 4" x 10" stacked bond
Color: White
Finish: Gloss
Grout: TBD - color to match tile
Location: Unit Kitchenette walls

CT-2 Caesar
Type: Solidworks
Size: 12" x 24" Running Bond
Color: TBD
Grout: TBD - color to match tile
Location: Tile floors

CT-3 Caesar
Type: Solidworks
Size: 12" x 24"
Color: TBD
Grout: TBD - color to match tile
Location: Floor band accent at doors

CTB-1 American Olean
Type: TBD
Size: 3" x 12" Cove Base
Color: TBD
Grout: TBD - color to match tile

Porcelain Tile Transition Strips (TS): Section 093000

WTS-1 Schluter
Style: Schiene
Finish: Standard color match
Size: Product for CT-5
Location: Unit Kitchenette wainscot exterior edges. Miter exterior corners.

Resilient Floor (RF): Section 096500

RF-1 Burke Mercer
Style: Endura Simply Smooth
Color: TBD
Size: 36" x 36" (nominal) tile
Location: Laundry/Trash rooms

Resilient Base (RB): Section 096500

RB-1 Johnsonite
Style: 1/8" Base
Color: TBD
Size: 4.125' ht
Location: See RFS for locations

RB-2 Johnsonite
Style: 1/8" Base
Color: TBD
Size: 4.125' ht
Location: See RFS for locations

Floor Transition strips (TS) - Section 096500

FTS-1 Schluter
Type: Reno Ramp
Color: Stainless steel
Size: Verify tile thickness w/ manu.
Location: Floor trans from CT/CPT to sealed conc.

Carpet (CPT): Section 096800

CPT-1 Shaw Contract
Budget \$28/yard install
Style: TBD
Color: TBD
Backing: TBD
Location: Resident Suite carpet

CPT-2 Shaw Contract
Budget \$28/yard install
Style: TBD
Color: TBD
Backing: TBD
Location: Corridor field carpet

Fiberglass Reinforced Panel (FRP): Section 068205

FRP-1 Kemlite
Colors: TBD
Finish: Pebble
Location: Walls adj. to mop sinks

Paint (P): Section 099000

P-1 SHERWIN WILLIAMS
Colors: TBD
Finish: Ceiling white (bright white)
Location: Ceiling

P-2 SHERWIN WILLIAMS
Colors: TBD
Finish: Eggshell (off white)
Location: Main wall color

P-3 SHERWIN WILLIAMS
Colors: TBD
Finish: Eggshell (mid tone)
Location: Accent color

P-4 SHERWIN WILLIAMS
Colors: TBD
Finish: Satin (mid tone)
Location: Accent color

Paint & Stain: Section 099000

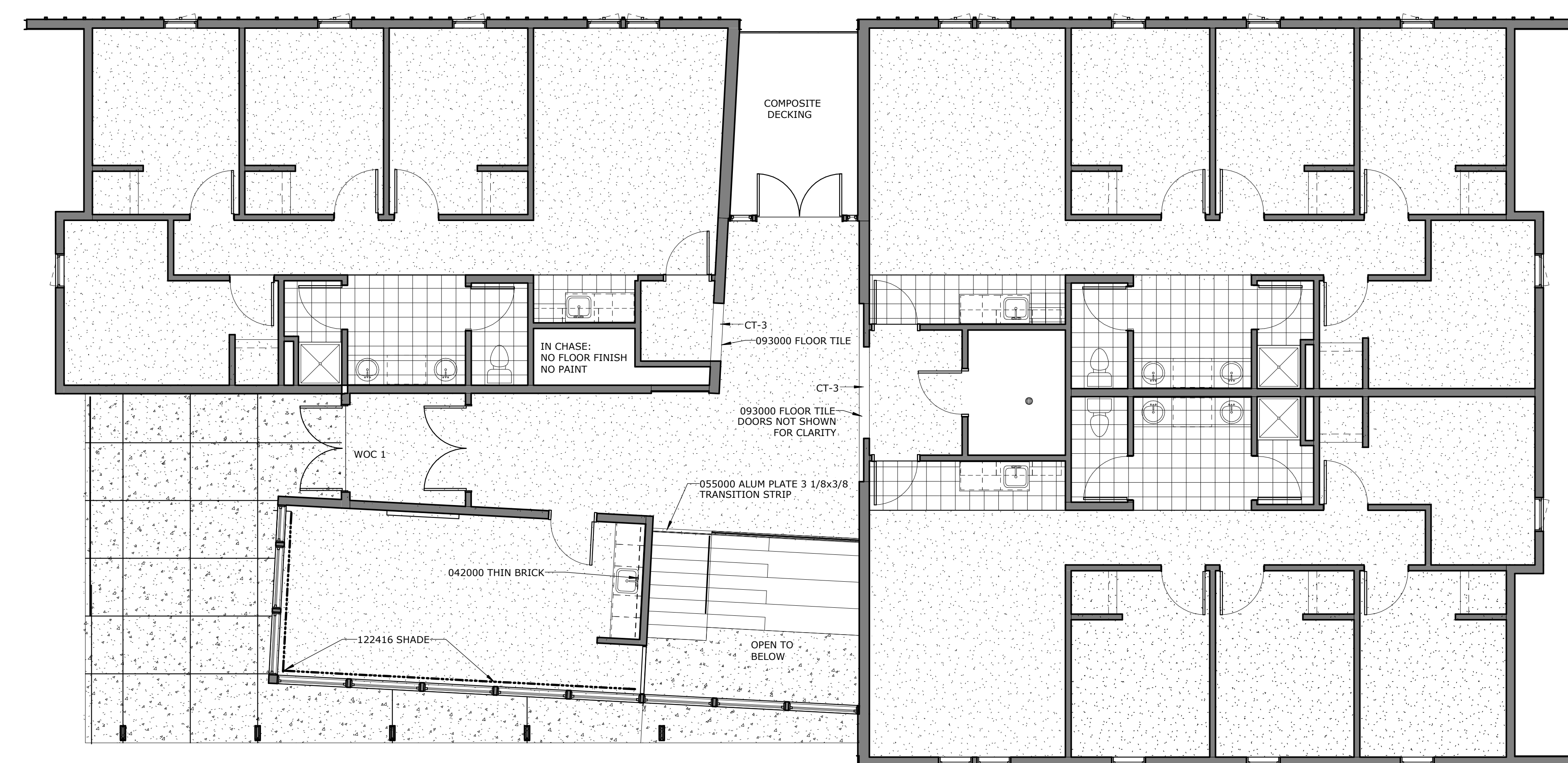
ST-1 CUSTOM
Color: To match sample (TBD)
Finish: Satin
Location: Wood trim

Tackboard (WC): Section 101101

WC-1 Walltalkers
Type: Tacwall
Color: TBD from standard line
Finish: Painted wood trim
Location: See Drawings

Manufactured Residential casework: Section 123530

RC-1 Merillat
Type: Classic Series with Deluxe Options
Door: Portrait
Species: Maple
Stain: Natural
Location: Unit Kitchenettes & Lounge Countertop at Kitchenette TBD (Plam)



A1 01 - FIRST FLOOR FINISH PLAN
3/16" = 1'-0"

A17 MATERIALS LISTS
1/8" = 1'-0"



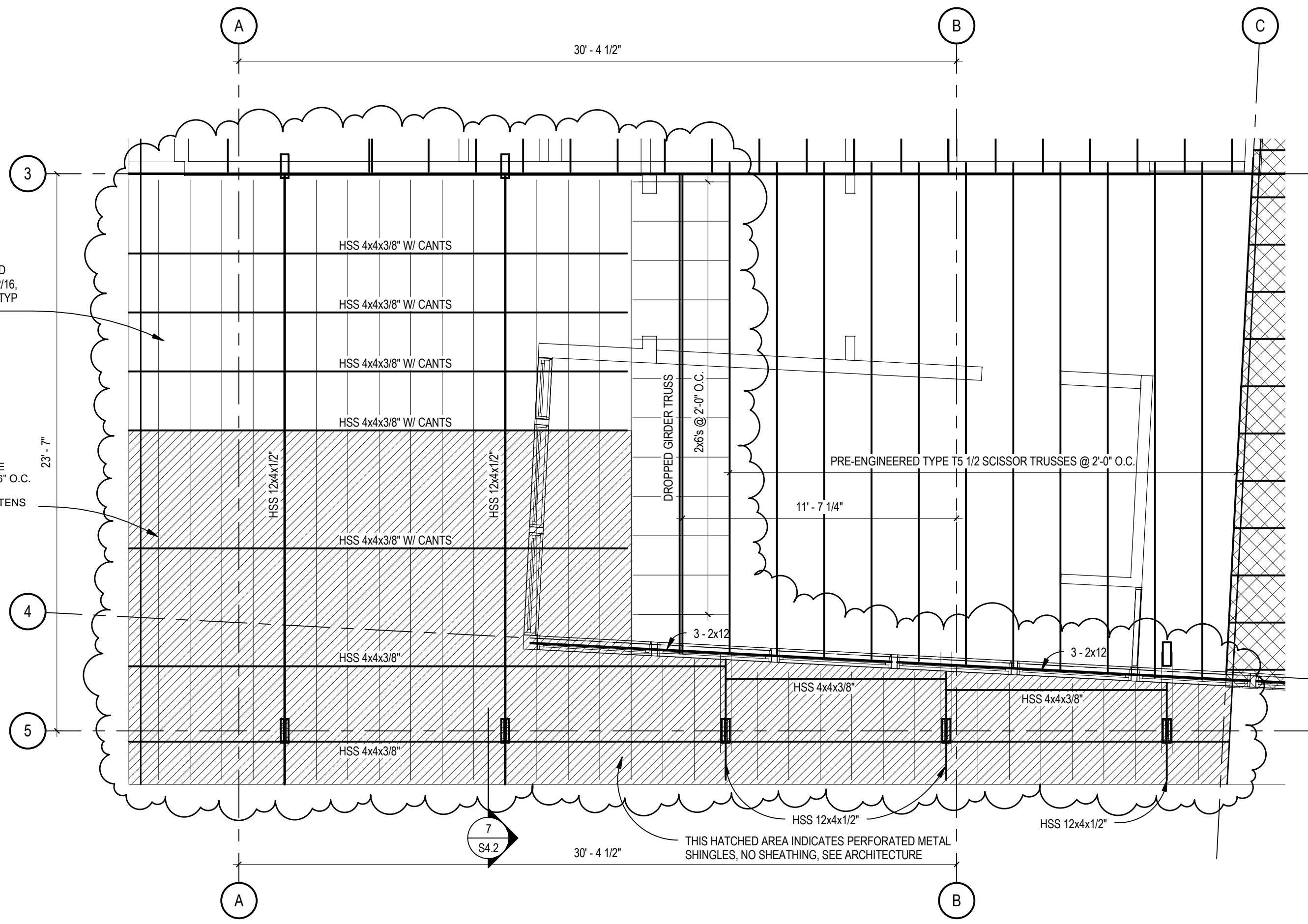
ARCHITECT
 BAHR VERMEER HAECKER ARCHITECTS
 440 N 8TH ST STE 100
 LINCOLN NE 68508
 V 402 475 4551
 F 402 475 0226
 bvh.com

EAGLE RIDGE
 HOUSING
 FINAL GMP
 ADDENDUM #1

PROJECT: #L12007
 DATE: 4.29.13
 © Copyright 2013 Bahr Vermeer Haecker Architects, LTD
 PROGRESS SET NOT
 FOR CONSTRUCTION

SDS-1

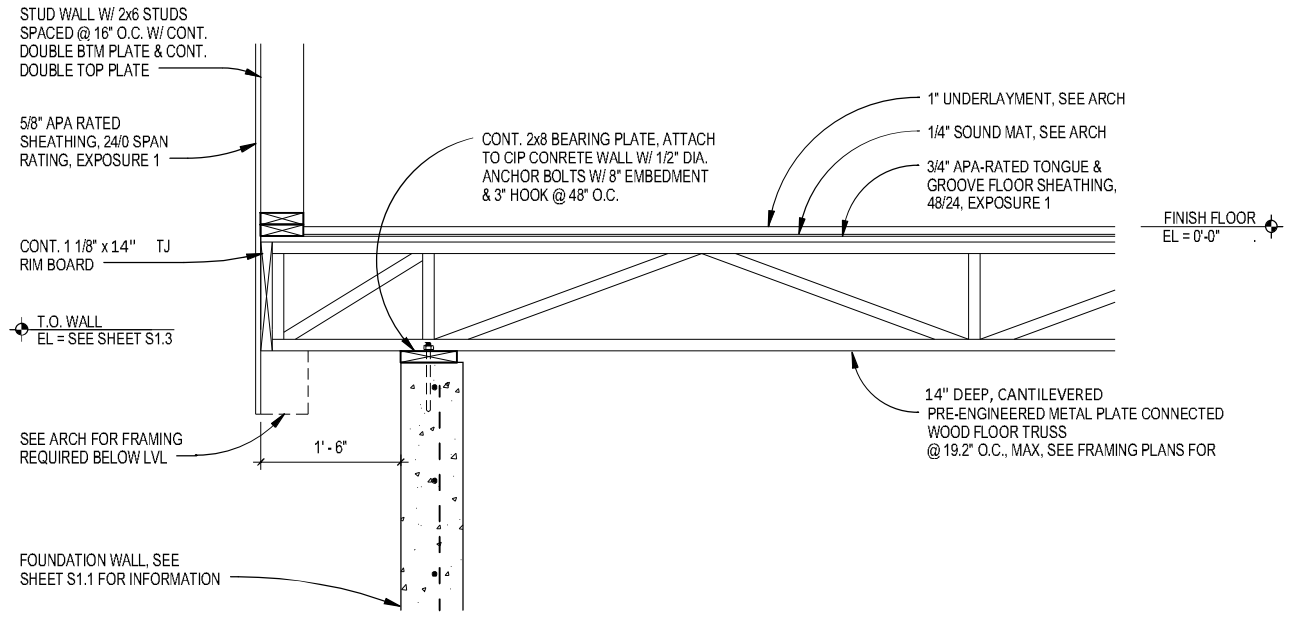
Project
 North



1 PARTIAL ROOF FRAMING PLAN
 SCALE: 1/4" = 1'-0"



ARCHITECT
BAHR VERMEER HAECKER ARCHITECTS
440 N 8TH ST STE 100
LINCOLN NE 68508
V 402 475 4551
F 402 475 0226
bvh.com



5 EXTERIOR WALL SECTION
SCALE: 3/4" = 1'-0"

EAGLE RIDGE HOUSING
FINAL GMP
ADDENDUM #1

PROJECT: #L12007
DATE: 4.29.13
© Copyright 2013 Bahr Vermeer Haecker Architects, LTD
PROGRESS SET NOT FOR CONSTRUCTION

SDS-2

