

Addendum No. 1

Project: The Brando for Bluestone Development

Date: 15 April 2013
From: Studio 951, Ltd.
To: All plan holders.

All information and instructions given herein shall become part of the Contract Documents.

Drawings – Please make the following changes:

A0.01

Please find a revised sheet attached.

CIVIL

Please find revised sheets C3.0, C3.1, C4.01, C5.0, C5.1 and C6.0.

A2.01

Please find a revised sheet attached.

Note that window G at the end of the corridors on the south elevation, has been changed to window type D. This applies to all residential floors.

A2.02

Please find a revised sheet attached.

A2.06

Please find a revised sheet attached.

A2.10

At Detail M1, at the note, "(2) CEDAR 2X6 SECURED WITH GALV. JOIST HANGERS..."
Change the note for, "21'-0" O.C." to "12'-0" ".

A2.21

At Elevations D12 and L9 eliminate the note that reads, "P.LAM CNTR & BACKSPLASH ON PNTD 2X FRAMING".

Please note that Door Types E and H have been modified by the changes on A4.01.

A2.23

At Elevations E9, E12 and K2 eliminate the note that reads, "P.LAM CNTR & BACKSPLASH ON PNTD 2X FRAMING".

Please note that Door Types E and H have been modified by the changes on A4.01.

A2.25

At Elevation E12, eliminate the note that reads, "P.LAM CNTR & BACKSPLASH ON PNTD 2X FRAMING".

Please note that Door Types E and H have been modified by the changes on A4.01.

A2.27

At Elevations J12, D12 and F9 eliminate the note that reads, "P.LAM CNTR & BACKSPLASH ON PNTD 2X FRAMING".

Please note that Door Types E and H have been modified by the changes on A4.01.

At Elevation Y12, eliminate the note for, "BULLNOSE MELAMINE ON WD CLEAT, (TYP.)", and replace it with a note that read, "COATED WIRE SHELVING SYSTEM, TYP".

A2.28

Please note that Door Types E and H have been modified by the changes on A4.01.

A2.29

Please find a revised sheet attached.

A4.01

Please find a revised sheet attached.

STRUCTURAL

Please provide an alternate price for the following, "The project, as-drawn, shows a straight foundation line with cantilevered concrete hollowcore planks supporting the exterior wall and 1' of tributary floor load. Steel beams and columns are used to support the floor trusses to prevent the floor load from being placed on the ends of the hollowcore planks. Infill framing is used to span the 2' distance between the steel beam and the bumpout wall. See details J1/S3.2, A10, S3.3. Provide a price to eliminate the cantilevered hollowcore, steel framing and infill floor framing. The foundation wall would jog instead providing support for the exterior wall. The north and east sides of the foundation would jog to match the exterior sheathing line above. The concrete wall reinforcing and foundations will be the typical sizes either side of the bumpouts. The stud framing will also remain the same. The piers and spread footing along with the steel columns and beams may be eliminated at the bumpouts. The wood trusses will be required to span an additional 2'. The concrete piers, footings, steel columns and beams will be required at the west bumpout and at the front entry irrespective of the decision made on the north and east sides."

MECHANICAL, PLUMBING AND ELECTRICAL

Mechanical Addendum items are shown under a separate summary sheet dated April 15, 2013 and that item is attached.

END of Addendum No. 1

15

Division 03 – Concrete
Scope of Work includes but is not limited to:

- Foundation**
- Form liner for exposed foundations as shown in elevations
 - Brick ledge as needed in locations shown in elevations
 - Reinforcing per plan
 - Provide and install anchor bolts as shown on Structural drawings
 - Pump truck as required
 - Dispose of concrete in required wash out area to be located on site
 - Establish elevations and coordinate brick ledge and block outs

- Flatwork**
- Granular fill at floor slab
 - Vapor barrier at garage floor slab as shown on Structural plans
 - Void form at stoops, or installation with frost free composite deck
 - All handicap armor tile inserts
 - At storm shelter, block outs as required for ventilation
 - All exterior stairs to be concrete finished smooth
 - At hollow core topping, provide Sonneborn Sonosield Sonoguard polyurethane waterproof coating system, or eq.

14

Division 04 – Masonry
Scope of Work includes but is not limited to:

- Sill Block**
- Layout of building corners by surveyor only
 - Furnish all masonry materials
 - Reinforcing bars by others
 - Grout solid where shown
 - Install embeds as required and as shown
 - All excess mortar to be disposed of in wash out pit

- Masonry block and veneer**
- Furnish all masonry materials and accessories as required
 - Adjustable wall ties
 - Furnish and install all required flashings including but not limited to: weeps and expansion joints at doors, windows, and sills
 - Furnish and install mortar net
 - King sized brick, \$350 per M and regular grey mortar
 - Owner to provide Allowance for winter enclosure mason to erect enclosure to secure from freezing
 - Provide architectural precast concrete items as shown

11

Division 6 – Rough Carpentry
Scope of Work includes but is not limited to:

- Framing**
- Complete package wall components with hardware
 - 2x4 & 2x6 wall panels @ 16" On center and as noted in the typical building section
 - Provide 2x6 exterior wall panels
 - Sheathing as specified by the Structural Drawings
 - 3/4" T&G Floor Sheathing (nailed and glued)
 - 1/2" sound board as indicated, see A3.30
 - Headers as specified by the Structural Drawings
 - Blocking to be install after MEP rough-in

9

- Loose Framing Materials**
- Stair materials
 - Headers
 - Exposed cedar Corridor joist system as shown
 - 5/8" Dens Glass (or eq.) exterior wall sheathing with proper corner framing/blocking for siding installation
 - Roof over-framing materials
 - Parapet Materials
 - Blocking for shower enclosures, bathroom hardware, and grab bars but not limited too
 - Platforms for HVAC system components
 - Adhesives
 - Include Simpson Hardware in bid
 - Sill Sealer
 - Window Wrap
 - Tyvek Commercial Grade building wrap with proper fasteners
 - Fire extinguisher box framing

7

- Exterior Decks**
- Joists as specified by the Structural Drawings
 - 5/4" Composite Decking
 - Hangers as specified
 - Thru-wall bolts and fasteners as specified

6

- Framing Labor**
- Install all components and loose materials
 - Floor and Roof truss package
 - Windows and exterior doors
 - Exterior Deck Joists and decking
 - Simpson Hold downs and connectors
 - Steel Erection

5

Division 6 – Finish Carpentry Labor
Scope of Work but not limited too:

- Items to be installed**
- All hollow metal doors and frames and adjust to fit
 - All bathroom and door hardware and common area hardware
 - All fire extinguisher cabinets
 - All unit door viewers
 - All wood handrails
 - All unit millwork and shelving
 - All cabinets and adjustment of cabinet doors
 - Assemble wood shelving units
 - Install wire shelves in closets

4

3

2

1

Division 7 – Panel Siding
Scope of Work includes but is not limited to:

- Materials**
- Any change in material will occur at an inside corner unless otherwise noted.
 - Price for prefinished cement board siding and colored caulking to match
 - Provide alternate price for primed cement board panel siding (or equal)
 - The horizontal and vertical joints shown in elevation are the locations for an aluminum reveal trim. Includes all panel edges and corners.
 - Provide galvanized flashing over top of brick where siding is shown above brick in elevation
 - Asphalt shingles to be 50 year warranty high-definition by GAF or eq.
 - Provide 60 mil EPDM for low slope roofs as shown and for the vertical faces on the back-side of parapets. Run up and over top of parapet.
 - Ice and water shield as noted.
 - Provide alternate price for 60 mil EPDM roof membrane for criques and pitched roofs behind parapets. Run up back-side of parapets and continue membrane over top of parapet.

- Division 8 – Doors and Windows
Scope of Work includes but is not limited to:**
- Vinyl windows to be prefinished to match dark bronze aluminum frame color, or in darkest bronze/brown color available from manufacturer.
 - Storefront aluminum windows and doors to be dark bronze. Exterior aluminum frames to be thermally broken.
 - Overhead door to be prefinished to match dark bronze aluminum frame color.

Division 9 – Painting
Scope of Work includes but is not limited to:

- Interior Painting**
- All paint to be eggshell
 - Primer coat and 2 base coats – last coat to be installed after punch out
 - Oil base paint on Hollow metal frames
 - Paint all base and casing, see schedule
 - Caulk all base, casing door frames and windows

- Exterior Painting**
- Provide pricing for the option of painting the primed cement board panels
 - All exposed steel shall be powder coated or shall have a factory applied finish. Touch up with appropriate materials and methods as needed in the field

- Interior Finish**
- Living unit interior carpet to be Mohawk Defiant, color – Whole Grain
 - Corridor carpet to be Bohyu Commuter, color - Expressway
 - LVT to be Korcteo Engage essentials
 - Living unit tile to be Olympia Yura, Lead Grey, 30x45cm
 - Trash Chute by trash chute manufacturer. See plans. Include rated access openings into chute, roof vent and all accessories for a complete installation
 - Paint colors to be limited to a maximum number of 2 base colors and a maximum of 4 accent colors
 - Provide alternate price for Granite counter at islands shown on unit plans
 - Window sills to be solid surface material selected from manufacturer's standard color range.
 - Ceilings to be finished smooth in corridors and common areas.
 - Ceilings to have light texture in living units.
 - Coated wire shelving systems in closets in living units.
 - Cabinets to be plastic laminate, full overlay, flush door, melamine interior, adjustable shelving. Provide hidden soft close hinges, soft close drawer slides.
 - Provide alternate price for granite counters at all island counters shown in the Enlarged unit plans.

Division 16 – Electrical
Scope of Work includes but is not limited to:

- Permit & inspection fees
- Residential grade tamper proof devices
- Conduit/MC cable per code
- Trenching for electrical installation
- Temporary power
- Circuitry by electrician
- Concrete for electrical (Transformer pads)
- Fire alarm system feeders in PVC and with aluminum wiring
- Light fixtures and lamps at common areas and units as indicated
- Phone style door entry system with electric strikes at entry doors. Hold opens on stair well doors tied to fire alarm system
- Electric heaters as shown on the Garage Plan and in the Storm Shelters.
- Connect to ventilation system in storm shelter
- 125A MLO or 150 MLO panels, 1-400A MLO panel with breakers as needed
- Transformer as shown on Civil plans, with aluminum conductor feeders
- Phone and CATV outlets box only COX to install cable
- Sealing of all fire penetrations by trades work per the fire proofing products UL listings. Maintain all product information and ensure GC has copy.
- Sealing of all exterior penetrations by trades work from the inside
- Electric water heater connections
- Electric "Magic-Pak" hvac units
- Fire sprinkler bell and terminations to be included
- Appliance wiring of dishwasher
- Provide total cost of all light fixtures as specified

Division 22 – Plumbing
Scope of Work includes but is not limited to:

- Laundry Closet**
- Qatey 38531 laundry box or eq.
 - Floor Drain
- Kitchen**
- Disposal Badger 1/3" hp or equal
 - ProFlo PFT172273 (17x22) self rimming stainless steel sink, 7" deep or eq.
 - Peerless P110LF kitchen sink fixture or eq.
 - Basket Strainer Waste Ring to match with sink
 - Dishwasher noted to be installed and hookup
- Bathrooms**
- Mansfield Alto #130/160 Round, #137/160 EB ADA in 4 of the units or eq.
 - Peerless P136LF sink fixture or eq.
 - Lavatory sink Eljer 19" oval or eq.
 - Aker/Maxx SHLS/RS-48 shower stall or eq.
 - Peerless PTT 188740 shower fixture or eq.
 - Bidding contractors to specify items included in bid.

- Miscellaneous**
- All p-traps to be pvc
 - Permits as required
 - Electric water heaters: #ES6 40 DORT and #ES6 52 DORT
 - Electric Magic Packs condensate lines by plumber
 - Condensate lines to floor drains or as per code
 - Water meter figure as 2"
 - Connect fire sprinkler backflow (Backflow provided by Fire Sprinkler contractor)
 - Lawn irrigation line, back flow and water meter 1"
 - Provide one wall hydrant on each building elevation, Woodford model 65 or equal
 - PIV per code
 - Plumb building according to City of Omaha plumbing codes (PVC if applicable for drain waste and Vent)
 - Insulate main water line
 - Stub 5'-0" outside with double clean out in concrete and make final connection for all utilities
 - Sealing all penetrations by trade's work
 - Sealing of all fire penetrations by trades work per the fire proofing products UL listings. Maintain all product information and ensure GC has copy.

- Exterior Utilities**
- Verify existing utilities in street to determine slope of sanitary and storm sewer lines
 - Excavate and re-compact to 90% and 98% under concrete with onsite soils as suitable
 - Comply with Civil engineers plans.

Division 23 – HVAC
Scope of Work includes but is not limited to:

- Permits as required
- Magic Pack units or equal with exterior louvers as specified by Engineer
- Duct work as indicated on plan
- Wall mounted Thermostats and wiring
- Access panels as specified by Engineer
- Dryer venting with interior housing and exterior wall caps
- Exhaust fans at bathrooms vented to outside with wall caps
- Storm shelter ventilation as per code
- Sealing all penetrations by trade's work
- Sealing of all fire penetrations by trades work per the fire proofing products UL listings. Maintain all product information and ensure GC has copy.
- HVAC system for corridors and common areas

Division 31 – Earthwork
Scope of Work includes but is not limited to:

- Demolition, Erosion, Excavation and Backfill:**
- Demo**
- All required permits
 - All required water and sewer abandonments
 - Temporary sidewalk / street closer as required (Safety requirements)
 - All Saw cutting
 - Tree removal
 - All concrete removal
 - Removal and fill of existing building foundation
- Erosion Control**
- Temporary access road (to be maintained during demolition and excavation)
 - Silt fence (maintained during demolition and excavation) Curb inlet protection
 - Concrete wash out
- Excavation and Backfill**
- Strip and stock pile site
 - Excavate building envelope as required
 - Scarify and re-compact parking lot and alley to a minimum depth of 12"
 - Export soils
 - Import suitable fills and backfill material as needed to site
 - Backfill foundation walls to a required 98% compaction (Brace walls as required)
 - Backfill all concrete and behind curbs
 - Grade site to area drains as indicated
 - Final grade of all green areas and import of topsoil as needed

- Unit Pricing**
- Cost /cubic yard of Fill \$ _____
 - Cost / cubic yard of Cut \$ _____
 - Cost / cubic yard of Haul \$ _____
 - Haul fees for concrete wash out \$ _____
 - Cost / lineal foot for silt fence \$ _____

ALL SUBCONTRACTORS AND SUPPLIERS TO SUBMIT BIDS WITH DETAILED SCOPE OF WORK INCLUDED WITH ANY AND ALL EXCLUSIONS.

ALL NOTES REVISED

Living Unit mix for The Brando
4/4/2013

| Main Floor | Units | type of unit | No/Floor |
|----------------------------|-------------|--------------|----------|
| Unit A1 | studio | | 3 |
| Unit A1B (A1 at bump) | studio | | 2 |
| Unit A2 (A1 clipped) | studio | | 1 |
| Unit A3 | studio | | 0 |
| Unit A4 | studio | | 0 |
| Unit A5 | studio | | 0 |
| Unit A6 | studio | | 1 |
| Unit A7 | studio | | 1 |
| Unit B1 | studio | | 7 |
| Unit B1B | studio | | 1 |
| Unit B1B2 | studio | | 1 |
| Unit B2 | studio | | 3 |
| Unit B2B | studio | | 3 |
| Unit B3 (L shape) | studio | | 1 |
| Unit B4 | studio | | 1 |
| Unit B5 | studio | | 1 |
| Unit B6 | studio | | 1 |
| Unit C1 | one bedroom | | 1 |
| Unit C1B (C1 at bump) | one bedroom | | 2 |
| Unit C2 | one bedroom | | 0 |
| Unit C3 (comer) | one bedroom | | 1 |
| Unit C4 (comer) | one bedroom | | 0 |
| Unit D1 | two bedroom | | 2 |
| Unit D2 (comer) | two bedroom | | 1 |
| Unit D2B (comer with bump) | two bedroom | | 1 |
| sub-totals | | | 34 |

Floor 2, 3, and 4

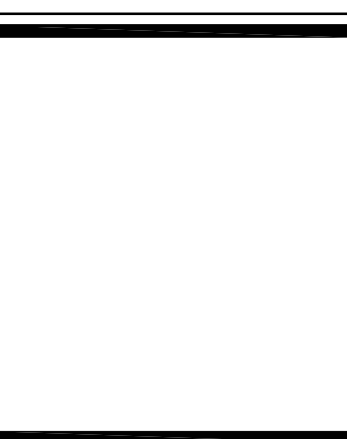
| Units | type of unit | No/Floor |
|----------------------------|--------------|----------|
| Unit A1 | studio | 3 |
| Unit A1B (A1 at bump) | studio | 2 |
| Unit A2 (A1 clipped) | studio | 1 |
| Unit A3 | studio | 1 |
| Unit A4 | studio | 1 |
| Unit A5 | studio | 1 |
| Unit A6 | studio | 1 |
| Unit A7 | studio | 1 |
| Unit B1 | studio | 7 |
| Unit B1B | studio | 1 |
| Unit B1B2 | studio | 1 |
| Unit B2 | studio | 2 |
| Unit B2B | studio | 3 |
| Unit B3 (L shape) | studio | 2 |
| Unit B4 | studio | 1 |
| Unit B5 | studio | 1 |
| Unit B6 | studio | 1 |
| Unit C1 | one bedroom | 1 |
| Unit C1B (C1 at bump) | one bedroom | 2 |
| Unit C2 | one bedroom | 1 |
| Unit C3 (comer) | one bedroom | 1 |
| Unit C4 (comer) | one bedroom | 1 |
| Unit D1 | two bedroom | 2 |
| Unit D2 (comer) | two bedroom | 1 |
| Unit D2B (comer with bump) | two bedroom | 1 |
| sub-totals | | 40 |

Building Totals

| Units | type of unit | totals |
|--------------------------------------|--------------|------------|
| Unit A1 | studio | 12 |
| Unit A1B (A1 at bump) | studio | 8 |
| Unit A2 (A1 clipped) | studio | 4 |
| Unit A3 | studio | 3 |
| Unit A4 | studio | 3 |
| Unit A5 | studio | 3 |
| Unit A6 | studio | 4 |
| Unit A7 | studio | 4 |
| Unit B1 | studio | 28 |
| Unit B1B | studio | 4 |
| Unit B1B2 | studio | 4 |
| Unit B2 | studio | 8 |
| Unit B2B | studio | 12 |
| Unit B3 (L shape) | studio | 7 |
| Unit B4 | studio | 4 |
| Unit B5 | studio | 4 |
| Unit B6 | studio | 4 |
| Unit C1 | one bedroom | 4 |
| Unit C1B (C1 at bump) | one bedroom | 8 |
| Unit C2 | one bedroom | 3 |
| Unit C3 (comer) | one bedroom | 4 |
| Unit C4 (comer) | one bedroom | 3 |
| Unit D1 | two bedroom | 8 |
| Unit D2 (comer) | two bedroom | 4 |
| Unit D2B (comer with bump) | two bedroom | 4 |
| Total Living Units for Brando | | 154 |



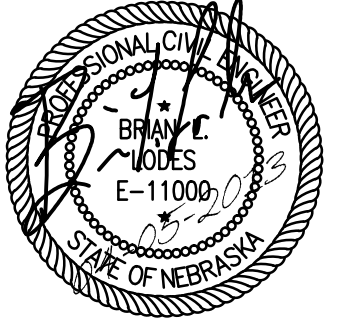
©studio951 Ltd. THIS DRAWING AND ASSOCIATED SPECIFICATIONS IS COPYRIGHT AS DATED AND SHALL REMAIN IN THE PROPERTY OF THE ARCHITECT. NO PART OF THESE DOCUMENTS SHALL BE REPRODUCED IN ANY FORM OR BY ANY MEANS WITHOUT WRITTEN PERMISSION FROM THE ARCHITECT.



BLUESTONE DEVELOPMENT - THE BRANDO
MULTI-FAMILY HOUSING
501 PARK AVENUE
OMAHA, NEBRASKA
SCOPE OF WORK

| NO. | ISSUED FOR | DATE |
|-----|-------------------|------------|
| 01 | PRICING | 2012.8.03 |
| 02 | EVALUATION D.E.F | 2012.8.17 |
| 03 | EVAL. ON-START PK | 2012.9.18 |
| 04 | OPT F3 REV UNITS | 2012.10.18 |
| 05 | F3 REVISED | 2012.10.22 |
| 06 | OPT F.L | 2012.10.24 |
| 07 | SITE PLAN REVIEW | 2012.10.31 |
| 08 | PHASE II REVIEW | 2012.11.09 |
| 09 | PHASE II REVIEW | 2012.12.11 |
| 10 | REVISIONS | 2012.12.18 |
| 11 | REVISED ELEVS | 2013.1.18 |
| 12 | ADDENDUM #1 | 2013.1.24 |
| 13 | SITE FOR T.B.A. | 2013.1.25 |
| 14 | PERMIT SET | 2013.04.08 |
| 15 | ADDENDUM #1 | 2013.04.15 |

| | |
|----|------------------|
| 1 | Job No. > 12-068 |
| 2 | |
| 3 | |
| 4 | |
| 5 | |
| 6 | |
| 7 | |
| 8 | |
| 9 | |
| 10 | |
| 11 | |
| 12 | |
| 13 | |
| 14 | |
| 15 | |



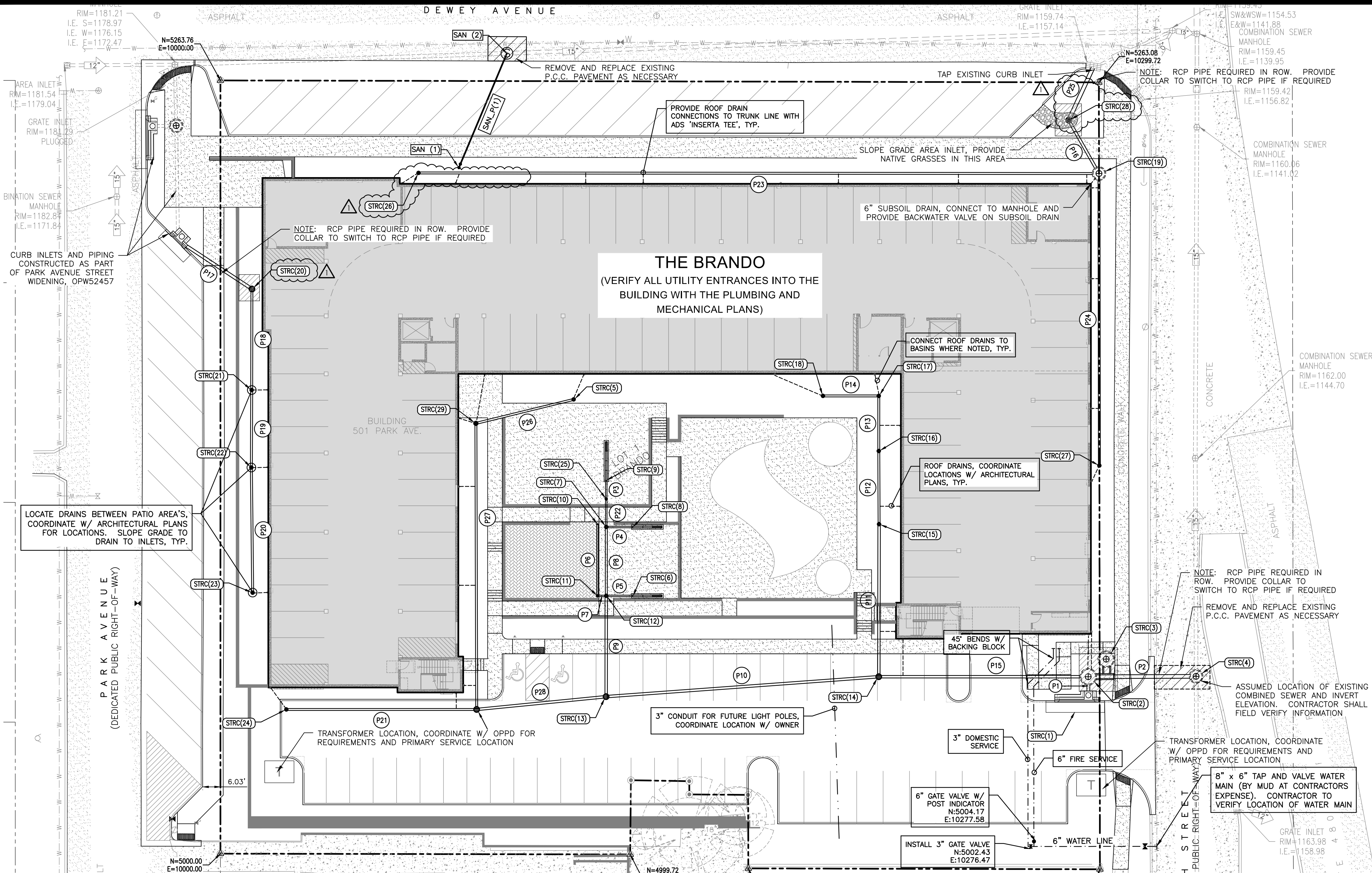
| No. | Description | MM-DD-YY |
|-----|-------------|------------|
| 1 | ADDENDUM 1 | 04-15-2013 |
| 2 | | |
| 3 | | |
| 4 | | |
| 5 | | |
| 6 | | |
| 7 | | |
| 8 | | |
| 9 | | |
| 10 | | |
| 11 | | |
| 12 | | |
| 13 | | |
| 14 | | |
| 15 | | |
| 16 | | |
| 17 | | |
| 18 | | |
| 19 | | |
| 20 | | |
| 21 | | |
| 22 | | |
| 23 | | |
| 24 | | |
| 25 | | |
| 26 | | |
| 27 | | |
| 28 | | |
| 29 | | |
| 30 | | |
| 31 | | |
| 32 | | |
| 33 | | |
| 34 | | |
| 35 | | |
| 36 | | |
| 37 | | |
| 38 | | |
| 39 | | |
| 40 | | |

UTILITY NOTES

- THE CONTRACTOR IS TO PROVIDE CONCRETE PIERS FOR OPDP TRANSFORMERS PER PAGE 32 OF OPDP METERING MANUAL AND A CONCRETE SLAB PER METERING SPECIFICATIONS TO BE PROVIDED BY OPDP CUSTOMER SERVICE REPRESENTATIVE.
- CONTRACTOR IS TO INSTALL MINI-MARKER IN ENDS OF CONDUITS INSTALLED FOR OPDP BY THE CONTRACTOR. MINI-MARKERS ARE TO BE PROVIDED BY OPDP. IF OPDP LAYS CABLE PRIOR TO LAYING OF CONDUITS THEN CONTRACTOR IS TO LAY CONDUITS ON TOP OF OPDP CABLE AT TIME OF TRENCHING.
- COORDINATE UTILITY CONSTRUCTION WORK WITH THE WORK OF ALL OTHER TRADES ON THE SITE.
- REFER TO SITE LAYOUT PLAN FOR BUILDING AND PAVEMENT LOCATIONS WHEN UTILITY LINES ARE REFERENCED FROM SUCH STRUCTURES.
- SEE ARCHITECTURAL AND PLUMBING PLANS FOR CONTINUATION OF ALL UTILITY LINES INTO BUILDINGS. COORDINATE WITH OTHER CONTRACTORS AS NECESSARY FOR CONSTRUCTION AND TESTING.
- TRENCHING AND BACKFILLING OF PVC CONDUITS FOR TELEPHONE AND POWER UNDER EXISTING AND PROPOSED SIDEWALKS AND PAVEMENTS SHALL MEET THE REQUIREMENTS FOR SEWER BACKFILL.
- CONTRACTOR SHALL HAVE ALL EXISTING UTILITIES LOCATED AND SHALL CONTACT THE "ONE CALL" SYSTEM AT 344-3565 PRIOR TO ANY EXCAVATION. ANY DAMAGE TO EXISTING UTILITIES SHALL BE REPAIRED AT THE CONTRACTORS EXPENSE.
- THE CONTRACTOR SHALL TAKE PRECAUTIONS TO PREVENT SILT LADEN RUNOFF FROM ENTERING STREET AND RUNNING ONTO ADJACENT PROPERTY. EROSION CONTROL SHALL BE MAINTAINED THROUGHOUT CONSTRUCTION AND SUBJECT TO APPROVAL BY THE OWNER. THE CONTRACTOR SHALL COMPLY WITH SWPPP REQUIREMENTS SET FORTH IN GRADING AND EROSION CONTROL PERMIT 0MA20130327-1465-2 THAT HAS BEEN OBTAINED FOR THIS PROJECT.
- SITING UTILITY CONTRACTOR TO EXTEND ALL PIPING TO WITHIN 5' OF BUILDING AND CAP FOR CONNECTION BY BUILDING UTILITY CONTRACTOR. THE CONTRACTOR SHALL BE RESPONSIBLE TO VERIFY THE PROPOSED UTILITY LINE LOCATIONS AT THE BUILDING AGAINST THE LOCATIONS SHOWN ON THE MECHANICAL AND ELECTRICAL PLANS AND TO COORDINATE THE CONTINUATION OF THE LINES INTO THE BUILDING.
- THE CONTRACTOR SHALL ADJUST ALL UTILITY STRUCTURES TO GRADE AS REQUIRED. THESE INCLUDE, BUT ARE NOT LIMITED TO MANHOLES, FIRE HYDRANTS, STORM SEWER INLETS, JUNCTION BOXES, VALVE BOXES AND CURB STOPS, SEWER CLEANOUTS AND ANY OTHER ITEMS THAT MAY FALL INTO THIS CLASSIFICATION. THESE ADJUSTMENTS SHALL BE NO PAY ITEMS.
- PRIOR TO CONSTRUCTION, THE CONTRACTOR SHALL VERIFY ALL GRADES AND TAP ELEVATIONS WHERE PROPOSED UTILITIES ARE TO BE INTO EXISTING UTILITIES. THE CONTRACTOR IS RESPONSIBLE TO STUDY THE PROPOSED PLANS AND NOTIFY THE OWNERS ENGINEER OF ANY INCONSISTENCIES, DISCREPANCIES OR CONSTRUCTIONABILITY PROBLEMS IF THEY MAY ARISE.
- REFER TO DETAILS AND SPECIFICATIONS FOR UTILITY MATERIAL CLASSIFICATION AND ANY OTHER ADDITIONAL REQUIREMENTS.
- COMPLY WITH ALL CODES AND REGULATIONS. OBTAIN PERMITS AS NECESSARY FOR WORK IN PUBLIC RIGHT-OF-WAY. CONTRACTOR SHALL PAY ALL METER COSTS, TAPPING FEES, VALVE COSTS AS REQUIRED BY METRO LITAN UTILITIES DISTRICT AS WELL AS COST OF UNDERGROUND SERVICE CONNECTIONS TO THE BUILDINGS FOR THIS PROJECT.
- THE LATEST EDITION OF THE CITY OF OMAHA STANDARD SPECIFICATIONS FOR PUBLIC WORKS CONSTRUCTION SHALL APPLY TO ALL PORTIONS OF THE WORK.
- IF GROUND WATER IS ENCOUNTERED IN TRENCHES, CRUSHED ROCK SHALL BE USED FOR BEDDING AND STABILIZATION AT NO ADDITIONAL COST TO THE OWNER. INSTALL CRUSHED ROCK BEDDING UNDER STORM SEWER IN ACCORDANCE WITH DETAILS.
- CONTRACTOR SHALL COORDINATE AND COMPLY WITH ALL UTILITY COMPANIES INVOLVED IN PROJECT.
- THE CONTRACTOR SHALL EMPLOY DUST CONTROL MEASURES AS NECESSARY DEPENDENT ON WEATHER CONDITIONS.
- DRAIN BASIN FITTINGS, DRAINS, BASINS, AND GRATES ARE MANUFACTURED BY NYLOPLAST ADS, 3130 VERNON AVENUE, BEDFORD GEORGIA 30519, OR APPROVED EQUAL. PRIOR TO ORDERING PARTS, THE CONTRACTOR IS TO VERIFY THE FOLLOWING ITEMS FOR EACH BASIN: INVERT ELEVATIONS, NUMBER OF BRANCHES ENTERING AND EXITING, AND TYPE AND SIZE OF PIPES ENTERING AND EXITING. FOR ADDITIONAL UTILITY DETAILS SEE SHEET C5.1 AND C6.0. FOR SPECIFICATIONS SEE SHEET C6.0.
- PROVIDE MANHOLE RINGS ON ALL MANHOLES LOCATED IN LANDSCAPED AREAS.
- ONCE 90% OR MORE OF THE SITE HAS BEEN STABILIZED WITH LANDSCAPING, THE CONTRACTOR SHALL INSTALL THE NYLOPLAST "CATCH-IT" AND CLEAN OUT THE PRIMARY AND STORAGE MANHOLE OF THE BAYSAYER.
- CAST IRON MANHOLES, GRATES, AND FRAMES ARE REQUIRED ON ALL STORM SEWER AND SANITARY SEWER MANHOLES.

UTILITY CONTACTS

- | | |
|--|--|
| <p>COX COMMUNICATIONS (VOICE, VIDEO & DATA) MR. BILL HILL 11505 WEST DODGE ROAD OMAHA, NE 68154 (402) 510-2361</p> | <p>CENTURY LINK MR. JACK DODENDORF 7404 NORTH 78TH STREET, BLDG A OMAHA, NE 68122 (402) 572-5824</p> |
| <p>METROPOLITAN UTILITIES DISTRICT-WATER MR. DON NOONAN 3001 SOUTH 61ST AVENUE OMAHA, NE 68106 (402) 554-7988</p> | <p>METROPOLITAN UTILITIES DISTRICT-SEWERS MR. BRIAN LEAHY 3001 SO 61ST AVENUE OMAHA, NE 68106 (402) 554-7980</p> |
| <p>OMAHA PUBLIC POWER DISTRICT-POWER MR. JOHN IMIG 444 SOUTH 16TH STREET MALL OMAHA, NE 68102 (402) 552-5386</p> | <p>CITY OF OMAHA PUBLIC WORKS-SEWERS MR. GEOFF GOODWIN 1819 FARNAM STREET OMAHA, NE 68102 (402) 444-5105</p> |



| STRUCTURE NAME | DETAILS | LOCATION |
|---|---|---------------------------|
| PUB_STRC1 TYPE IV CURB INLET | RIM: 1182.89 I.E. 12": 1176.80 (SE) I.E. 12": 1176.70 (N) | N: 5209.17 E: 9985.54 |
| STRC(1) TYPE I CURB INLET | RIM: 1185.05 I.E. 12": 1161.00 (N) | N: 5054.01 E: 10296.15 |
| STRC(2) 60" I.D. BAYSAYER PRIMARY MH (SEE 3K BAYSAYER TYP. DETAIL) | RIM: 1185.45 I.E. 15": 1160.50 (E) I.E. 12": 1160.70 (S) I.E. 10": 1160.70 (W) | N: 5060.34 E: 10296.11 |
| STRC(3) 60" I.D. BAYSAYER STORAGE MH (SEE 3K BAYSAYER TYP. DETAIL) | RIM: 1164.84 | N: 5066.33 E: 10302.22 |
| STRC(4) 54" I.D. STORM SEWER MH OVER EXISTING PIPE | RIM: 1183.60 I.E. 15": 1147.13 (N) I.E. 15": 1147.13 (S) I.E. 15": 1159.76 (W) | N: 5060.48 E: 10332.90 |
| STRC(5) 15" NYLOPLAST CUSTOM BASIN W/ SOLID H-20 COVER | RIM: 1181.83 I.E. 8": 1178.30 (W) | N: 5154.93 E: 10120.55 |
| STRC(6) TRENCH DRAIN (SK-1 TO SK-3) ACD POWERDRAIN S100K (OR APPROVED EQUAL) | RIM: 1177.90 I.E. 6": 1177.46 (W) | N: 5087.93 E: 10140.74 |
| STRC(7) 15" NYLOPLAST CUSTOM BASIN W/ SOLID H-20 COVER | RIM: 1178.05 I.E. 8": 1175.00 (S) I.E. 6": 1177.29 (E) I.E. 6": 1175.10 (N) | N: 5111.41 E: 10131.67 |
| STRC(8) TRENCH DRAIN (SK-1 TO SK-3) ACD POWERDRAIN S100K (OR APPROVED EQUAL) | RIM: 1177.90 I.E. 6": 1177.47 (W) | N: 5111.41 E: 10140.74 |
| STRC(9) TRENCH DRAIN (SK-1 TO SK-4) ACD POWERDRAIN S100K (OR APPROVED EQUAL) | RIM: 1181.46 I.E. 6": 1181.01 (S) | N: 5127.36 E: 10131.67 |
| STRC(10) SINGLE CLEAN-OUT | RIM: 1178.01 I.E. 6": 1178.00 (S) | N: 5112.41 E: 10128.67 |

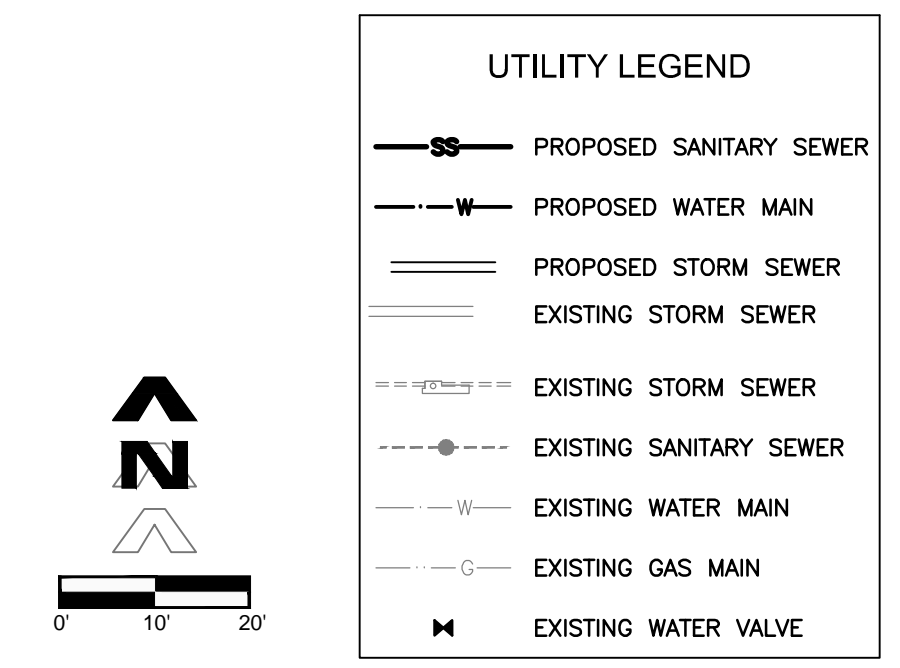
| STRUCTURE NAME | DETAILS | LOCATION |
|---|---|---------------------------|
| STRC(11) 10" I.D. NYLOPLAST CUSTOM BASIN W/ SOLID H-20 COVER | RIM: 1177.96 I.E. 6": 1175.78 (E) I.E. 6": 1175.88 (N) | N: 5087.93 E: 10128.67 |
| STRC(12) 15" NYLOPLAST CUSTOM BASIN W/ SOLID H-20 COVER | RIM: 1177.96 I.E. 10": 1171.50 (S) I.E. 6": 1177.20 (E) I.E. 6": 1175.70 (W) I.E. 8": 1174.70 (N) | N: 5087.93 E: 10131.67 |
| STRC(13) 24" I.D. NYLOPLAST CUSTOM BASIN W/ SOLID H-20 COVER | RIM: 1173.12 I.E. 10": 1169.00 (E) I.E. 10": 1169.10 (N) I.E. 10": 1169.10 (W) | N: 5053.55 E: 10131.61 |
| STRC(14) 24" I.D. NYLOPLAST CUSTOM BASIN W/ SOLID H-20 COVER | RIM: 1168.39 I.E. 10": 1164.40 (E) I.E. 10": 1164.50 (W) I.E. 10": 1164.50 (N) | N: 5060.34 E: 10224.64 |
| STRC(15) 15" I.D. NYLOPLAST CUSTOM BASIN W/ LIGHT-DUTY DOME COVER | RIM: 1176.00 I.E. 10": 1170.00 (S) I.E. 8": 1170.10 (N) | N: 5112.35 E: 10224.73 |
| STRC(16) 15" I.D. NYLOPLAST CUSTOM BASIN W/ LIGHT-DUTY DOME COVER | RIM: 1176.00 I.E. 8": 1171.20 (S) I.E. 8": 1171.30 (N) | N: 5137.31 E: 10224.64 |
| STRC(17) 15" NYLOPLAST CUSTOM BASIN W/ SOLID H-20 COVER | RIM: 1176.47 I.E. 8": 1171.70 (S) I.E. 8": 1171.80 (W) | N: 5156.14 E: 10224.64 |
| STRC(18) 15" NYLOPLAST CUSTOM BASIN W/ LIGHT-DUTY DOME COVER | RIM: 1176.00 I.E. 8": 1172.00 (E) | N: 5156.14 E: 10205.59 |
| STRC(19) 48" I.D. STORM SEWER MANHOLE | RIM: 1162.21 I.E. 10": 1158.50 (NW) I.E. 8": 1158.63 (S) I.E. 8": 1158.63 (N) | N: 5231.97 E: 10299.76 |
| STRC(20) 24" NYLOPLAST CUSTOM BASIN W/ SOLID H-20 COVER AND NYLOPLAST "CATCH-IT" | RIM: 1181.93 I.E. 12": 1176.95 (NW) I.E. 8": 1177.95 (S) | N: 5192.59 E: 10010.76 |
| STRC(21) 15" NYLOPLAST CUSTOM BASIN W/ LIGHT-DUTY DOME COVER | RIM: 1181.90 I.E. 8": 1178.10 (N) I.E. 8": 1178.20 (S) | N: 5158.12 E: 10010.68 |

| STRUCTURE NAME | DETAILS | LOCATION |
|--|---|---------------------------|
| STRC(22) 15" NYLOPLAST CUSTOM BASIN W/ LIGHT-DUTY DOME GRATE | RIM: 1181.89 I.E. 8": 1178.40 (N) I.E. 8": 1178.50 (S) | N: 5131.70 E: 10010.58 |
| STRC(23) 15" NYLOPLAST CUSTOM BASIN W/ LIGHT-DUTY DOME GRATE | RIM: 1181.90 I.E. 8": 1178.70 (N) | N: 5089.01 E: 10011.01 |
| STRC(24) 15" NYLOPLAST CUSTOM BASIN W/ SOLID H-20 COVER | RIM: 1177.82 I.E. 8": 1173.00 (E) | N: 5049.18 E: 10022.50 |
| STRC(25) 12" NYLOPLAST CUSTOM BASIN W/ SOLID H-20 COVER | RIM: 1181.64 I.E. 6": 1175.29 (S) I.E. 6": 1180.88 (N) | N: 5120.97 E: 10131.67 |
| STRC(26) 15" NYLOPLAST CUSTOM BASIN W/ SHOULD H-20 COVER | RIM: 1175.18 I.E. 8": 1171.50 (E) | N: 5232.20 E: 10067.61 |
| STRC(27) 15" NYLOPLAST CUSTOM BASIN W/ SHOULD H-20 COVER | RIM: 1162.87 I.E. 8": 1160.20 (N) | N: 5132.38 E: 10299.89 |
| STRC(28) 24" NYLOPLAST CUSTOM BASIN W/ SOLID H-20 COVER, NYLOPLAST "CATCH-IT", AND 30" SUMP | RIM: 1160.36 I.E. 10": 1157.34 (NE) I.E. 10": 1158.34 (SE) | N: 5250.19 E: 10289.42 |
| STRC(29) 18" NYLOPLAST CUSTOM BASIN W/ SOLID H-20 COVER | RIM: 1181.72 I.E. 8": 1177.50 (S) I.E. 8": 1177.60 (E) | N: 5146.77 E: 10067.17 |
| STRC(30) 24" NYLOPLAST CUSTOM BASIN W/ SOLID H-20 COVER | RIM: 1174.61 I.E. 10": 1170.00 (E) I.E. 8": 1170.13 (W) I.E. 8": 1170.13 (N) | N: 5049.18 E: 10087.43 |

| STRUCTURE TABLE (SAN) | | |
|---|--|---------------------------|
| STRUCTURE NAME | DETAILS | LOCATION |
| SAN (1) DOUBLE CLEANOUT | RIM: 1173.83 I.E. 8": 1166.00 (NE) | N: 5234.03 E: 10081.39 |
| SAN (2) 54" I.D. SANITARY SEWER MANHOLE W/ BACKWATER VALVE ON 8" PIPE | RIM: 1171.68 I.E. 15": 1162.29 (W) I.E. 8": 1162.76 (SW) | N: 5273.00 E: 10097.76 |

| PIPE TABLE (STM) | | | | |
|------------------|------|--------|---------|------------------|
| NAME | SIZE | LENGTH | SLOPE | MATERIAL |
| P1 | 12" | 6.33' | -4.74% | PVC / HDPE |
| P2 | 15" | 36.80' | -2.00% | PVC / HDPE / RCP |
| P3 | 6" | 6.38' | -2.00% | PVC / HDPE |
| P4 | 6" | 9.08' | -2.00% | PVC / HDPE |
| P5 | 6" | 9.08' | -2.86% | PVC / HDPE |
| P6 | 6" | 24.47' | -0.50% | PERFORATED PVC |
| P7 | 6" | 3.00' | -2.67% | PVC / HDPE |
| P8 | 8" | 23.47' | -1.28% | PVC / HDPE |
| P9 | 10" | 34.38' | -6.98% | PVC / HDPE |
| P10 | 10" | 93.28' | -4.82% | PVC / HDPE |
| P11 | 10" | 52.01' | -10.57% | PVC / HDPE |
| P12 | 8" | 24.96' | -4.41% | PVC / HDPE |
| P13 | 8" | 18.83' | -2.12% | PVC / HDPE |
| P14 | 8" | 19.06' | -1.05% | PVC / HDPE |

| PIPE TABLE (STM) | | | | |
|------------------|------|---------|--------|------------------|
| NAME | SIZE | LENGTH | SLOPE | MATERIAL |
| P15 | 10" | 71.46' | -5.18% | PVC / HDPE |
| P16 | 10" | 20.95' | -0.76% | PVC / HDPE |
| P17 | 12" | 30.18' | -0.50% | PVC / HDPE / RCP |
| P18 | 8" | 34.47' | -0.44% | PVC / HDPE |
| P19 | 8" | 26.42' | -0.76% | PVC / HDPE |
| P20 | 8" | 42.69' | -0.47% | PVC / HDPE |
| P21 | 8" | 64.94' | -4.42% | PVC / HDPE |
| P22 | 6" | 9.57' | -2.00% | PVC / HDPE |
| P23 | 8" | 232.15' | -5.54% | PVC / HDPE |
| P24 | 8" | 99.60' | -1.58% | PVC / HDPE |
| P25 | 15" | 20.13' | -0.50% | PVC / HDPE |
| P26 | 8" | 34.36' | -2.04% | PVC / HDPE |
| P27 | 8" | 97.59' | -7.55% | PVC / HDPE |
| P28 | 10" | 44.40' | -2.03% | PVC / HDPE |



CALL BEFORE YOU DIG
DIGGER'S HOTLINE
of NEBRASKA

Stotewide
1-800-331-5666
Metro Omaha
344-3565

CALL BEFORE YOU DIG
 DIGGER HOTLINE
 Statewide
1-800-331-5666
 Metro Omaha
344-3565

THE BRANDO

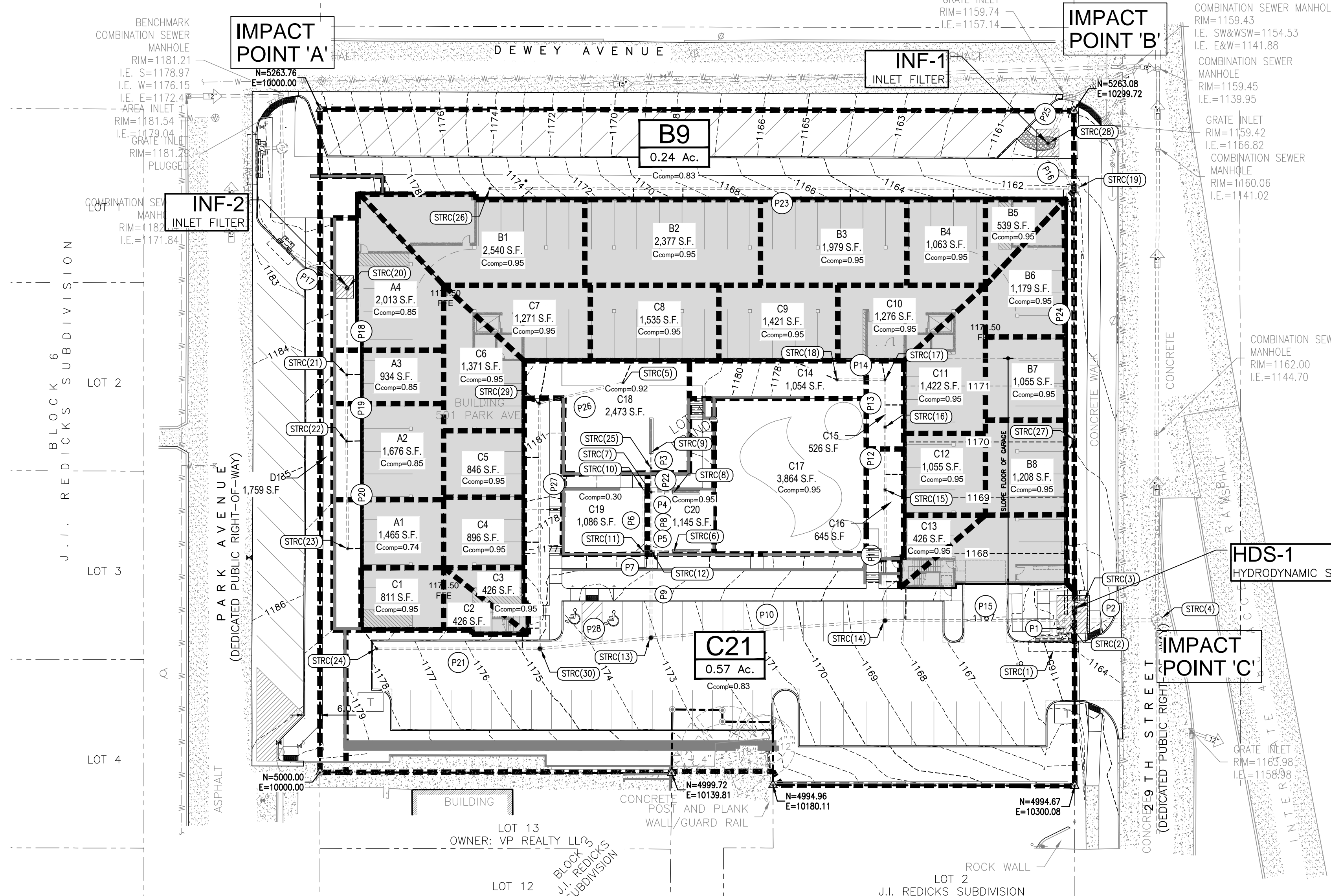
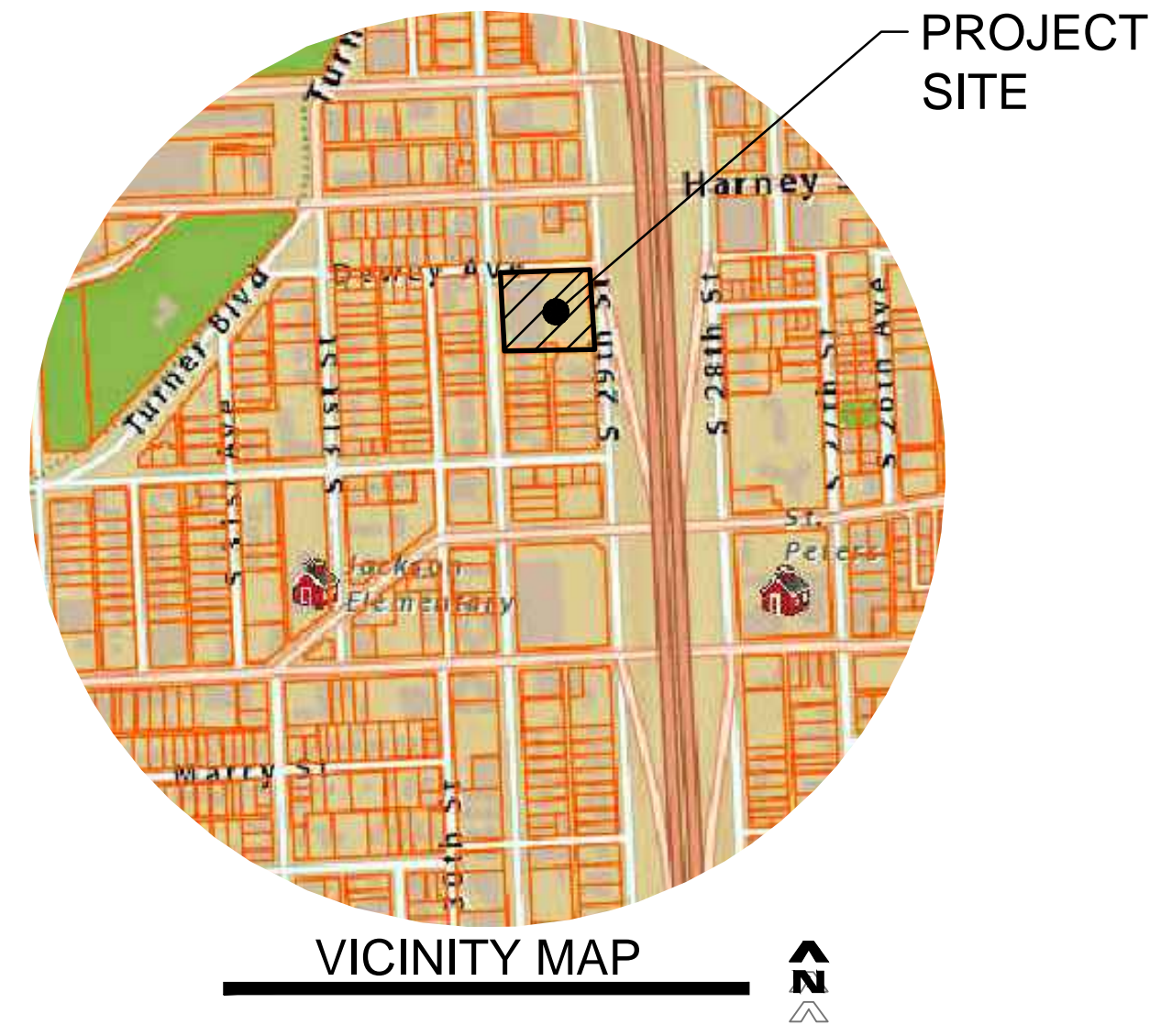
501 PARK AVENUE

OMA-20130401-811-P

BENCHMARK
 DESCRIPTION: THE RIM OF THE COMBINATION SEWER MANHOLE EAST END OF DEWEY AVENUE AND PARK AVENUE.
 ELEVATION: 1181.21 (NGVD 1929)

LEGEND

- EXISTING CONTOUR
- PROPOSED CONTOUR
- DASHED LINE INDICATES DRAINAGE AREA BOUNDARY
- PROPOSED DRAINAGE AREA INFORMATION
- PROPOSED DRAINAGE AREA INFORMATION GOING OFF-SITE
- PROPOSED PIPE NUMBER
- STRUCTURE NUMBER
- PERMANENT POST CONSTRUCTION STORMWATER MANAGEMENT SECTOR NO. _____ OF THE DOUGLAS COUNTY RECORDS.



POST CONSTRUCTION STORMWATER MANAGEMENT PLAN PROJECT INFORMATION

| | | | |
|---|--|---|----------------------|
| OMA20130401-811-P | OMA20130327-1465-2 | N/A | 6-1-13 |
| PROJECT NUMBER ASSIGNED BY PWD | GRADING PERMIT PROJECT NUMBER ASSIGNED BY PWD | SKD NUMBER | ESTIMATED START DATE |
| THE BRANDO | BRANDO | | |
| PROJECT NAME | SUBDIVISION NAME | | |
| 501 PARK AVE | OMAHA | NE | 68105 |
| ADDRESS | CITY | STATE | ZIP CODE |
| N/A | N/A | N/A | N/A |
| CITY COUNCIL RESOLUTION NO. GRANTING PROJECT APPROVAL | CITY COUNCIL ORDINANCE NO. GRANTING PROJECT APPROVAL | CITY COUNCIL RESOLUTION/ORDINANCE APPROVAL DATE | |

- GENERAL NOTES**
- Approval must be obtained from the City of Omaha Public Works Department prior to the commencement of construction. The CONTRACTOR shall check with the INSPECTOR for City of Omaha Public Works Department approval of the project before starting work.
 - The CONTRACTOR and INSPECTOR must insure all impacted government agencies (City of Omaha, Douglas County, State of Nebraska, Corps of Engineers, Popo - Missouri River Natural Resource District, United States Federal Government, etc.) have granted all applicable permission to proceed with construction prior to mobilization. Furthermore, 48 hours prior to the commencement of construction, the INSPECTOR must notify all concerned parties that work will be proceeding within each impacted government agency jurisdictional boundary.
 - The CONTRACTOR must notify the INSPECTOR 48 hours prior to all preconstruction meetings and 48 hours prior to the start of any construction.
 - Construction found to be unacceptable to the City of Omaha Public Works Department shall be removed and replaced.
 - The CONTRACTOR shall notify all impacted utility companies, via One Call (402-344-3565), 48 hours before work is started to verify utility locations.
 - The existence and location of any overhead or underground utility lines, pipes, or structures shown on these plans are obtained by a research of the available records. Existing utilities are approximate and for record purposes. Existing utilities are located on plans only for the convenience of the CONTRACTOR. Existing utility service laterals may not be shown on the plans. The CONTRACTOR shall locate all underground and overhead interference which may affect his operation during construction and shall take all necessary precautions to avoid damage to same.
 - The CONTRACTOR shall take all precautionary measures necessary to protect existing utility lines, structures and street improvements which are to remain in place, from damage, and all such improvements or structures damaged by the CONTRACTOR'S operations shall be repaired or replaced satisfactory to the INSPECTOR and owning utility company. All construction shall be as shown on these plans, any revisions shall have the prior written approval of the DESIGNER and City of Omaha Public Works Department.
 - All construction shall be as shown on these plans, any revisions shall have the prior written approval of the DESIGNER and City of Omaha Public Works Department.
 - Construction may require the disturbance of existing, drainage and erosion control measures. The CONTRACTOR shall make himself aware of the existing drainage and erosion control measures prior to bidding this work. The function of these items must be maintained throughout construction with emphasis placed on restoring their integrity prior to any rainfall event. Erosion control improvements have been constructed on this site, including terraces, silt fencing, and temporary sediment basins. The CONTRACTOR shall be responsible for prompt reconstruction of any erosion control improvements disturbed by his operations. All disturbed erosion control improvements shall be fully reconstructed at the end of each working day prior to leaving the site.
 - CONTRACTOR shall adjust all new and existing inlets, valve boxes, manhole risers, and sewer clean outs, etc. to finish grade as applicable whether or not they are shown on the plans.
 - The CONTRACTOR'S must adhere to good housekeeping best management practices at all times. Good housekeeping best management practices focus on keeping the work site clean and orderly while handling materials and waste in a manner that eliminates the potential for pollutant runoff.
 - The construction documents (e.g., Contract, Bond, Insurance, Specifications, and Plans) are essential and a requirement in one file as binding as though occurring in all. Thus, the construction documents are complementary in nature. The documents describe and provide the complete construction project. The CONTRACTOR may not take advantage of any apparent construction project errors or omissions. The CONTRACTOR shall be responsible for the construction methodology shall rule.
 - The APPLICANT, INSPECTOR, and CONTRACTOR must insure an acceptable As Built Certification Form with all applicable paperwork has been submitted to the CITY OF OMAHA PUBLIC WORKS DEPARTMENT within (30) thirty days after completion of construction.

PROJECT DESCRIPTION
 THE NATURE OF THIS PROJECT IS TO CONSTRUCT A MULTI-FAMILY BUILDING WHICH WILL INCLUDE A PARKING LOT, NECESSARY UTILITIES, AND AN HYDRODYNAMIC SEPARATOR.

| | |
|--|---|
| APPLICANT 501 LLC MR. CHRISTIAN CHRISTENSEN 720 N. 13TH STREET OMAHA, NE 68104 PHONE: 402-345-2408 CHRISTIAN@BELLSTONEDEV.COM | DESIGNER THOMPSON, DREESSEN & DORNER, INC. MR. BRIAN L. LODES P.E. 10836 OLD MILL ROAD OMAHA, NE 68154 PHONE: 402-330-8860 FAX: 402-330-8866 BLODES@TD2CO.COM |
| INSPECTOR THOMPSON, DREESSEN & DORNER, INC. MR. BRIAN L. LODES P.E. 10836 OLD MILL ROAD OMAHA, NE 68154 PHONE: 402-330-8860 FAX: 402-330-8866 BLODES@TD2CO.COM | CONTRACTOR NO KNOWN YET |

SITE AREA = 1.81 AC.

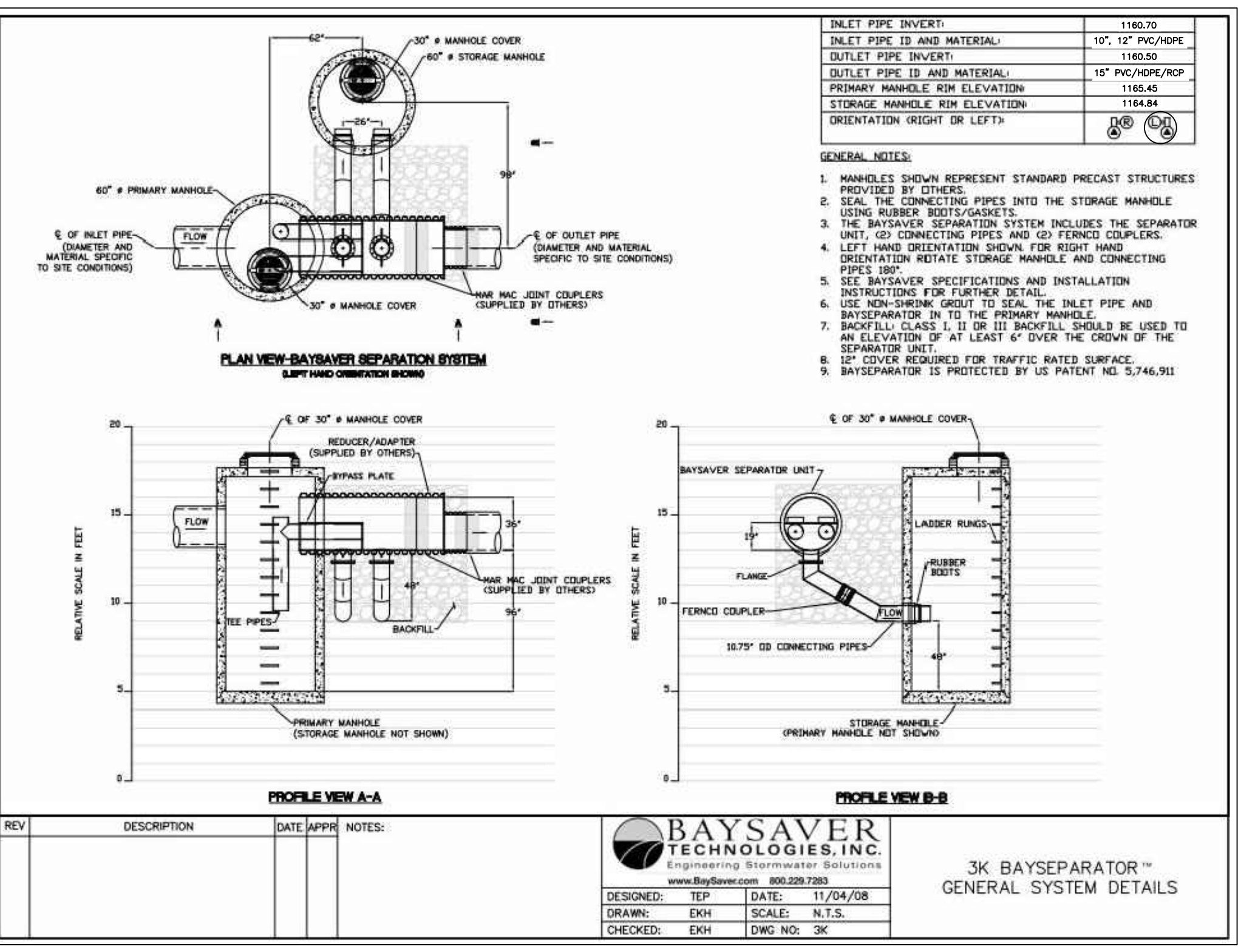
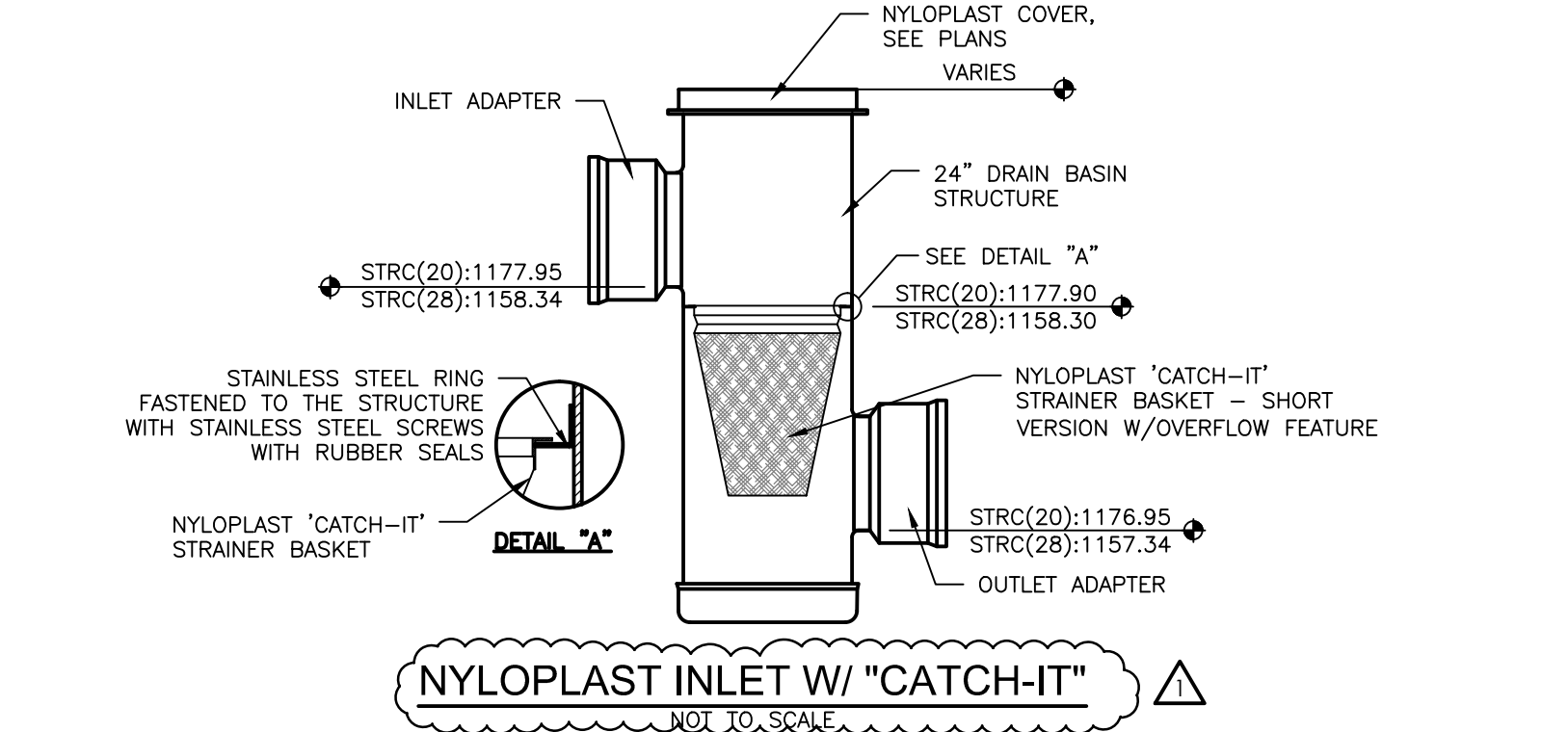
| | |
|---|---|
| EXISTING CONDITIONS INFORMATION IMPERVIOUS AREA = 1.52 AC. (C=0.95) PERVIOUS AREA = 0.29 AC. (C = 0.40) COMPOSITE C = 0.86 | PROPOSED CONDITIONS INFORMATION IMPERVIOUS AREA = 1.44 AC. (C=0.95) PERVIOUS AREA = 0.37 AC. (C = 0.40) COMPOSITE C = 0.84 |
|---|---|

POST CONSTRUCTION BMP'S

| BMP IDENTIFIER | BMP DESCRIPTION | LONGITUDE / LATITUDE | STATE PLANE COORDINATES |
|----------------|-----------------|------------------------|-------------------------|
| HDS-1 | BAYSAVER 3K | N41.255387, W95.954636 | N=543997, E2751972 |
| INF-1 | INLET FILTER | N41.255931, W95.954675 | N=544175, E2751964 |
| INF-2 | INLET FILTER | N41.255734, W95.955699 | N=544135, E2751688 |

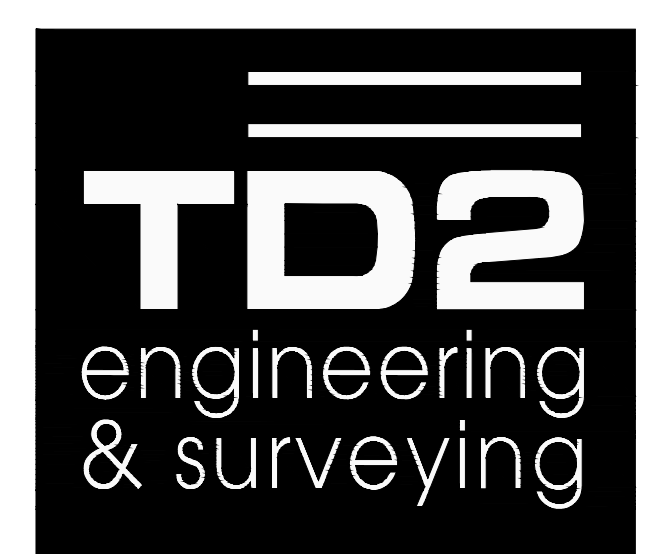
COMPUTATION FORM
 STORM DRAINAGE SYSTEM DESIGN BY THE RATIONAL METHOD

| From | To | W.S. | D.F. | W.C. | S | V | T | I | A | C | Q | Comp | Sys | Slope | V | Cap. | Lgth | T | TOC | Comp | Total | Des. | Remarks |
|----------|----------|---------|------|------|-----|-----|-----|-----|-----|-----|------|------|------|-------|------|------|------|------|------|------|-------|------|---------|
| Location | Location | or | for | to | ft. | ft. | ft. | ft. | ft. | ft. | cfs | ft. | ft. | ft. | ft. | ft. | ft. | min | ft. | ft. | ft. | ft. | |
| A1 | Strc(2) | Strc(2) | | | | | | | | | 0.00 | 0.00 | 0.00 | 0.00 | 0.00 | 0.00 | 0.00 | 0.00 | 0.00 | 0.00 | 0.00 | 0.00 | |



BAYSAVER TECHNOLOGIES, INC.
 Engineering Stormwater Solutions
 3K BAYSAVER™ GENERAL SYSTEM DETAILS
 DESIGNED: TEP DATE: 11/04/08
 DRAWING: DKH SCALE: N.T.S.
 CHECKED: DKH DWG. NO.: 3K

OMA-20130401-811-P
SHEET 1 OF 1



thompson, dreesen & dornier, inc.
 10836 Old Mill Rd
 Omaha, NE 68154
 p.402.330.8860 www.td2co.com

Project Name
The Brando

Client Name
Studio 951



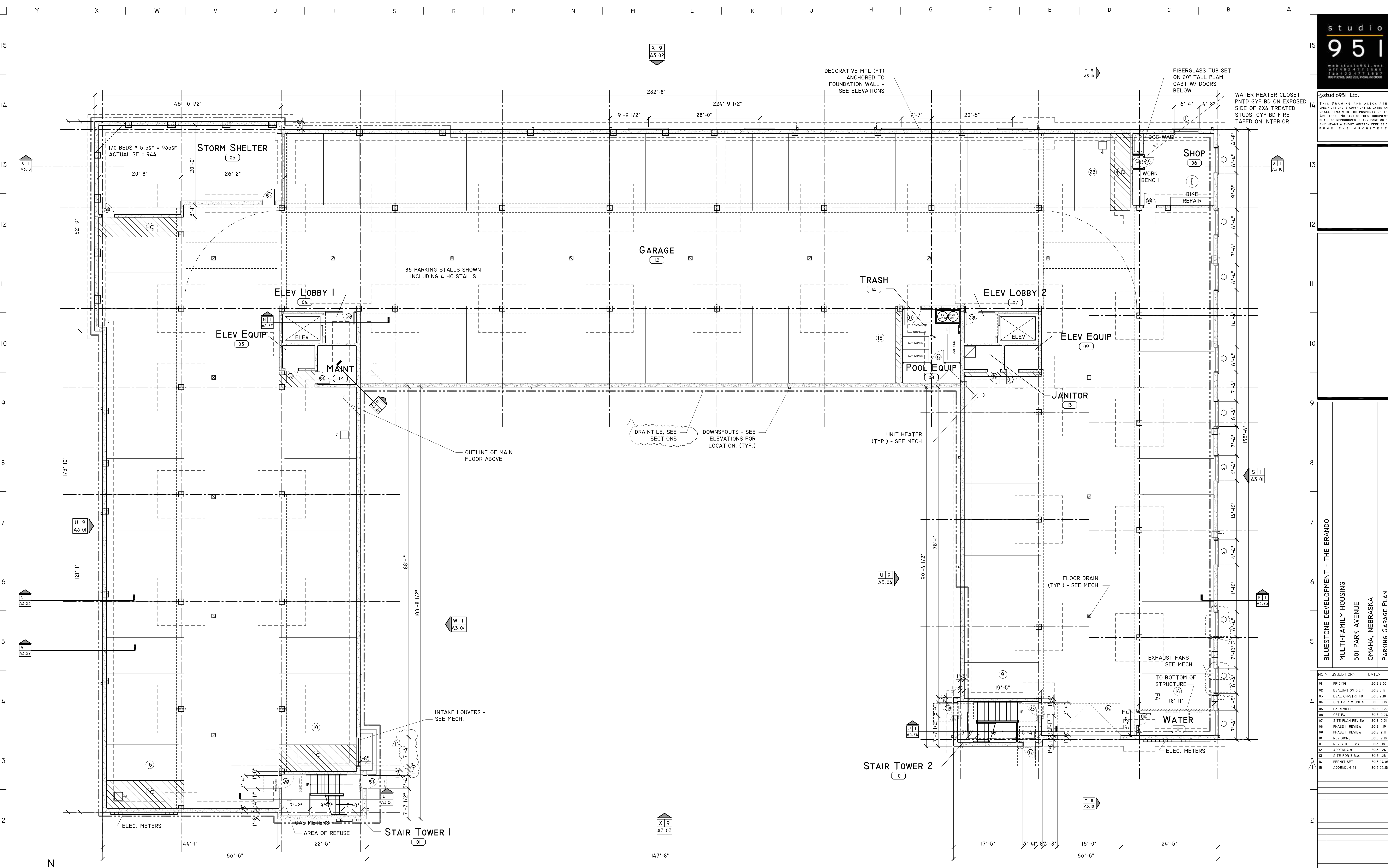
Revision Dates

| No. | Description | MM-DD-YY |
|-----|-------------|------------|
| 1 | ADDENDUM 1 | 04-15-2013 |
| 2 | | |
| 3 | | |
| 4 | | |
| 5 | | |
| 6 | | |
| 7 | | |
| 8 | | |
| 9 | | |
| 10 | | |
| 11 | | |
| 12 | | |
| 13 | | |
| 14 | | |
| 15 | | |
| 16 | | |
| 17 | | |
| 18 | | |
| 19 | | |
| 20 | | |

Drawn By: BLL Reviewed By: BLL
 Job No.: 1783-101 Date: 04-05-2013

Sheet Title
PCSMP

Sheet Number
C6.0



BLUESTONE DEVELOPMENT - THE BRANDO
MULTI-FAMILY HOUSING
501 PARK AVENUE
OMAHA, NEBRASKA
PARKING GARAGE PLAN

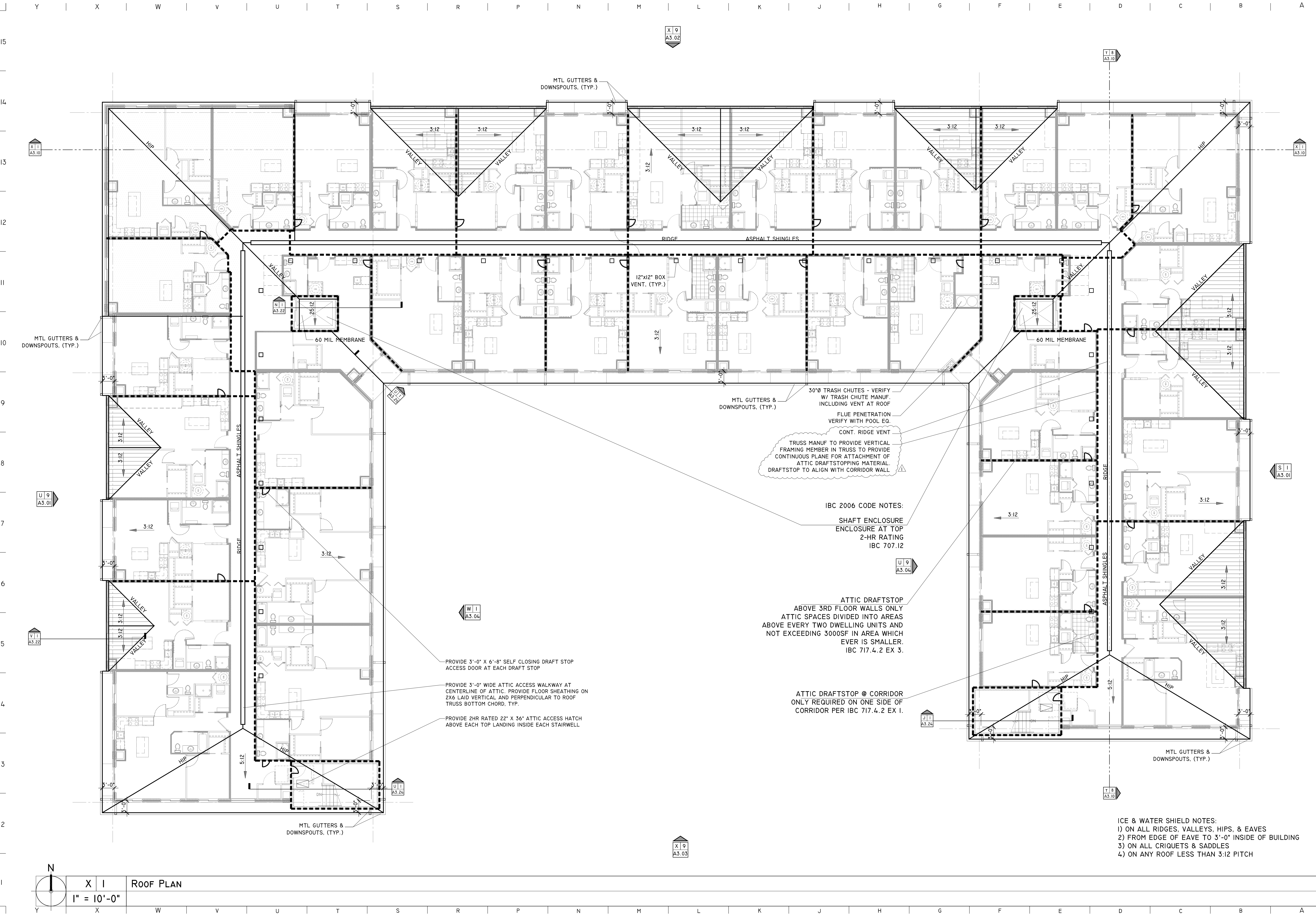
| NO. | ISSUED FOR | DATE |
|-----|-------------------|------------|
| 01 | PRICING | 2012.8.03 |
| 02 | EVALUATION D.E.P. | 2012.8.17 |
| 03 | EVAL. ON-STRTY PK | 2012.9.18 |
| 04 | OPT F3 REV UNITS | 2012.10.18 |
| 05 | F3 REVISED | 2012.10.22 |
| 06 | OPT F4 | 2012.10.24 |
| 07 | SITE PLAN REVIEW | 2012.10.31 |
| 08 | PHASE II REVIEW | 2012.11.09 |
| 09 | PHASE II REVIEW | 2012.12.11 |
| 10 | REVISIONS | 2012.12.18 |
| 11 | REVISED ELEV | 2015.1.18 |
| 12 | ADDENDA #1 | 2015.1.24 |
| 13 | SITE FOR Z.B.A. | 2015.1.25 |
| 14 | PERMIT SET | 2015.04.09 |
| 15 | ADDENDUM #1 | 2015.04.15 |

PARKING GARAGE PLAN
1" = 10'-0"

©studio951 Ltd.
THIS DRAWING AND ASSOCIATED SPECIFICATIONS IS COPYRIGHT AS SHOWN AND SHALL REMAIN IN THE PROPERTY OF THE ARCHITECT. NO PART OF THESE DOCUMENTS SHALL BE REPRODUCED IN ANY FORM OR BY ANY MEANS WITHOUT WRITTEN PERMISSION FROM THE ARCHITECT.

BLUESTONE DEVELOPMENT - THE BRANDO
MULTI-FAMILY HOUSING
501 PARK AVENUE
OMAHA, NEBRASKA
ROOF PLAN

| NO. | ISSUED FOR | DATE |
|-----|-------------------|------------|
| 01 | PRICING | 2012.8.03 |
| 02 | EVALUATION D.E.F | 2012.8.17 |
| 03 | FINAL CONTRACT PR | 2012.9.18 |
| 04 | OPT F3 REV UNITS | 2012.10.18 |
| 05 | F3 REVISED | 2012.10.22 |
| 06 | OPT FL | 2012.10.24 |
| 07 | SITE PLAN REVIEW | 2012.10.31 |
| 08 | PHASE II REVIEW | 2012.11.19 |
| 09 | PHASE II REVIEW | 2012.11.19 |
| 10 | REVISIONS | 2012.12.18 |
| 11 | REVISED ELEV | 2013.1.18 |
| 12 | ADDENDA #1 | 2013.1.24 |
| 13 | SITE FOR 2 B.A. | 2013.1.25 |
| 14 | PERMIT SET | 2013.04.08 |
| 15 | ADDENDUM #1 | 2013.04.15 |



MTL GUTTERS & DOWNSPOUTS, (TYP.)

MTL GUTTERS & DOWNSPOUTS, (TYP.)

MTL GUTTERS & DOWNSPOUTS, (TYP.)

MTL GUTTERS & DOWNSPOUTS, (TYP.)

MTL GUTTERS & DOWNSPOUTS, (TYP.)

30"Ø TRASH CHUTES - VERIFY W/ TRASH CHUTE MANUF. INCLUDING VENT AT ROOF
FLUE PENETRATION VERIFY WITH POOL EQ.
CONT. RIDGE VENT
TRUSS MANUF TO PROVIDE VERTICAL FRAMING MEMBER IN TRUSS TO PROVIDE CONTINUOUS PLANE FOR ATTACHMENT OF ATTIC DRAFTSTOPPING MATERIAL. DRAFTSTOP TO ALIGN WITH CORRIDOR WALL

IBC 2006 CODE NOTES:
SHAFT ENCLOSURE ENCLOSURE AT TOP 2-HR RATING IBC 707.12

ATTIC DRAFTSTOP ABOVE 3RD FLOOR WALLS ONLY ATTIC SPACES DIVIDED INTO AREAS ABOVE EVERY TWO DWELLING UNITS AND NOT EXCEEDING 3000SF IN AREA WHICH EVER IS SMALLER. IBC 717.4.2 EX 3.

ATTIC DRAFTSTOP @ CORRIDOR ONLY REQUIRED ON ONE SIDE OF CORRIDOR PER IBC 717.4.2 EX 1.

PROVIDE 3'-0" X 6'-8" SELF CLOSING DRAFT STOP ACCESS DOOR AT EACH DRAFT STOP

PROVIDE 3'-0" WIDE ATTIC ACCESS WALKWAY AT CENTERLINE OF ATTIC. PROVIDE FLOOR SHEATHING ON 2X6 LAID VERTICAL AND PERPENDICULAR TO ROOF TRUSS BOTTOM CHORD, TYP.

PROVIDE 2HR RATED 22" X 36" ATTIC ACCESS HATCH ABOVE EACH TOP LANDING INSIDE EACH STAIRWELL

ICE & WATER SHIELD NOTES:
1) ON ALL RIDGES, VALLEYS, HIPs, & EAVES
2) FROM EDGE OF EAVE TO 3'-0" INSIDE OF BUILDING
3) ON ALL CRIQUETS & SADDLES
4) ON ANY ROOF LESS THAN 3:12 PITCH

N
X | I
1" = 10'-0"
ROOF PLAN

©studio951 Ltd.
THIS DRAWING AND ASSOCIATED SPECIFICATIONS IS COPYRIGHT AS DATED AND SHALL REMAIN IN THE PROPERTY OF THE ARCHITECT. NO PART OF THESE DOCUMENTS SHALL BE REPRODUCED IN ANY FORM OR BY ANY MEANS WITHOUT WRITTEN PERMISSION FROM THE ARCHITECT.



U 9 WEST ELEVATION
1/8" = 1'-0"

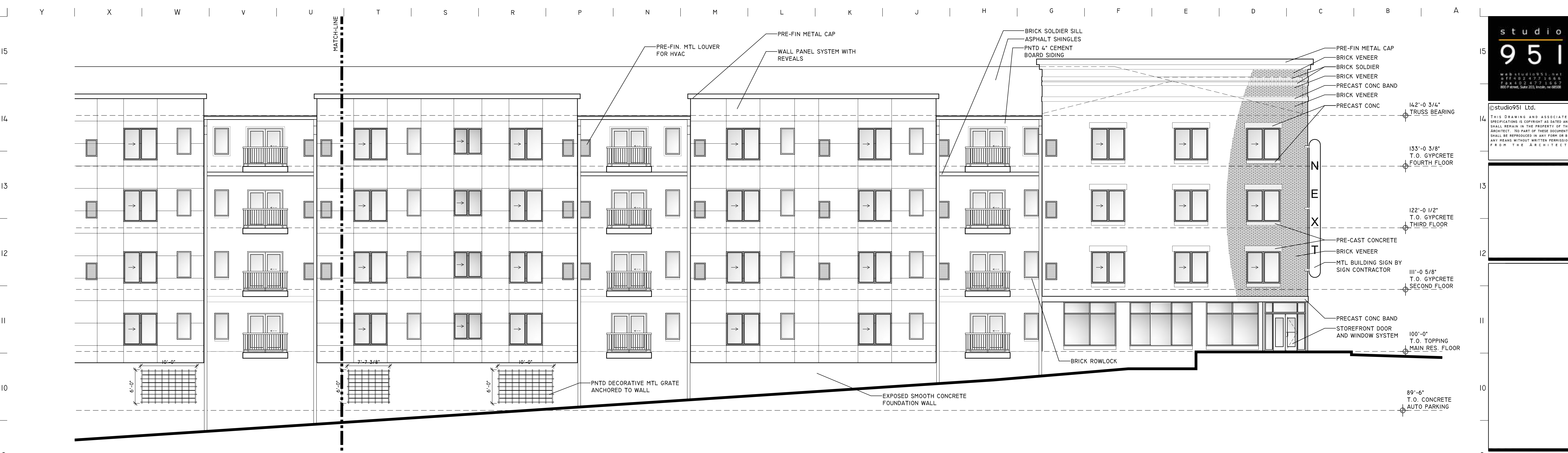


Y I EAST ELEVATION
1/8" = 1'-0" ALTERNATE FOR NICHIIHA PANELS (TYP AT BUMPS)

S I EAST ELEVATION
1/8" = 1'-0"

BLUESTONE DEVELOPMENT - THE BRANDO
MULTI-FAMILY HOUSING
501 PARK AVENUE
OMAHA, NEBRASKA
ELEVATIONS

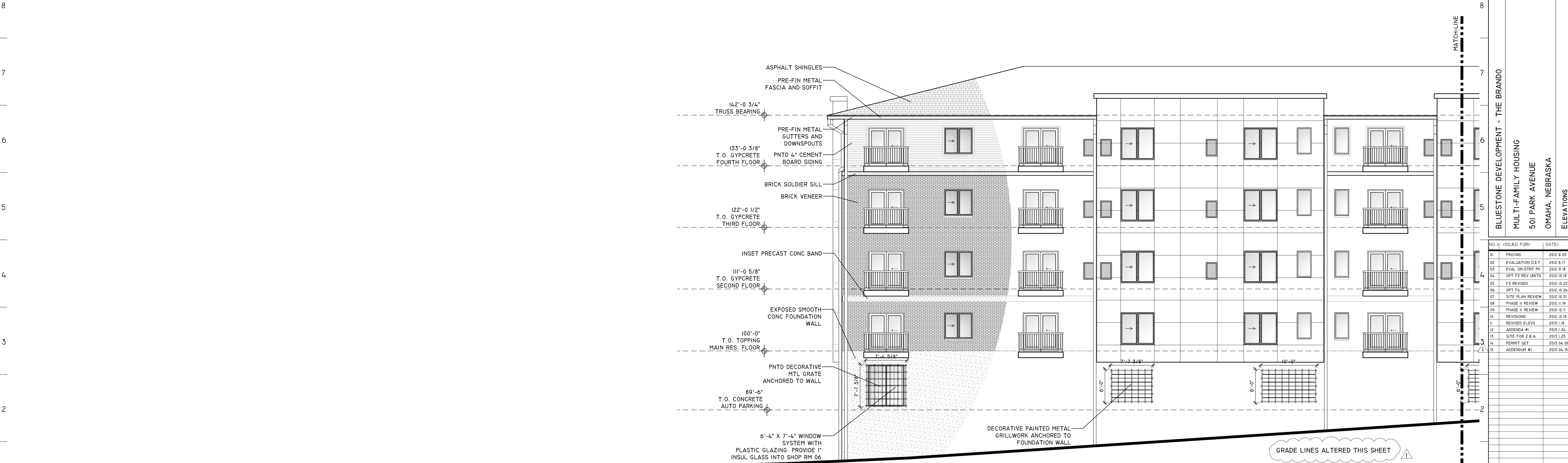
| NO. | ISSUED FOR | DATE |
|-----|-------------------|------------|
| 01 | PRICING | 2012.8.03 |
| 02 | EVALUATION D.E.P. | 2012.8.17 |
| 03 | EVAL. ON-STRTY PK | 2012.9.18 |
| 04 | OPT P3 REV UNITS | 2012.10.18 |
| 05 | P3 REVISED | 2012.10.22 |
| 06 | OPT P4 | 2012.10.24 |
| 07 | SITE PLAN REVIEW | 2012.10.31 |
| 08 | PHASE II REVIEW | 2012.11.09 |
| 09 | PHASE II REVIEW | 2012.12.11 |
| 10 | REVISIONS | 2012.12.18 |
| 11 | REVISED ELEV | 2013.1.18 |
| 12 | ADDENDA #1 | 2013.1.24 |
| 13 | SITE FOR Z.B.A. | 2013.1.25 |
| 14 | PERMIT SET | 2013.04.08 |
| 15 | ADDENDUM #1 | 2013.04.15 |



X 9 NORTH ELEVATION - PARTIAL
1/8" = 1'-0"



©studio951 Ltd.
THIS DRAWING AND ASSOCIATED SPECIFICATIONS IS COPYRIGHT AS DATED AND SHALL REMAIN IN THE PROPERTY OF THE ARCHITECT. NO PART OF THESE DOCUMENTS SHALL BE REPRODUCED IN ANY FORM OR BY ANY MEANS WITHOUT WRITTEN PERMISSION FROM THE ARCHITECT.



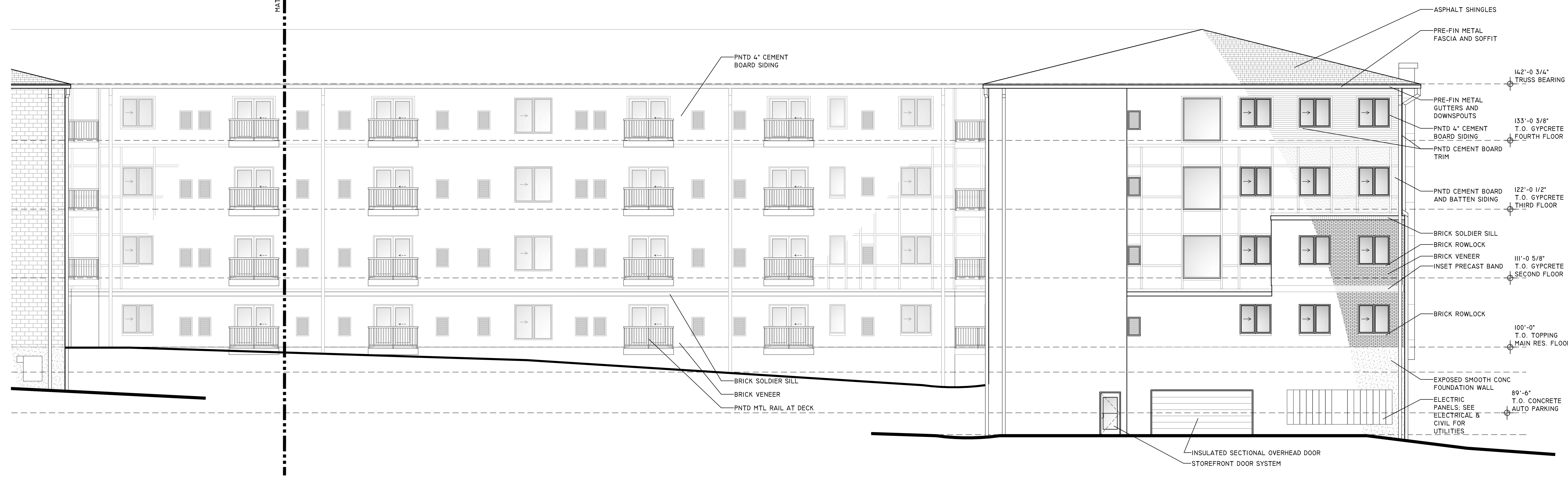
N 1 NORTH ELEVATION - CONTINUED
1/8" = 1'-0"

BLUESTONE DEVELOPMENT - THE BRANDO
MULTI-FAMILY HOUSING
501 PARK AVENUE
OMAHA, NEBRASKA
ELEVATIONS

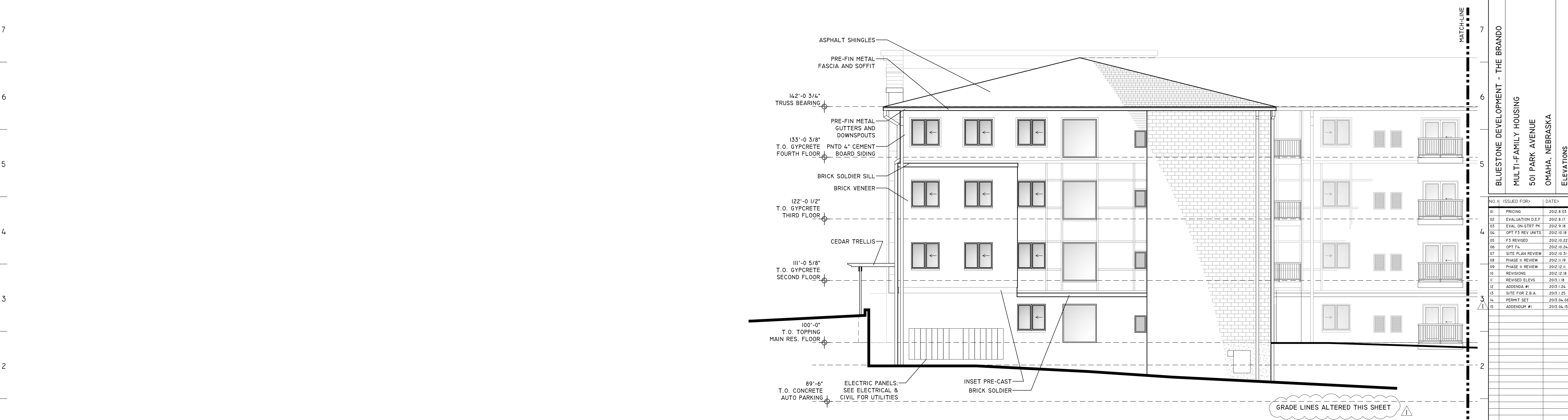
| NO. | ISSUED FOR | DATE |
|-----|-------------------|------------|
| 01 | PRICING | 2012.8.03 |
| 02 | EVALUATION D.E.P. | 2012.8.17 |
| 03 | EVAL. ON-STRT PK | 2012.9.18 |
| 04 | OPT F3 REV UNITS | 2012.10.18 |
| 05 | F3 REVISED | 2012.10.22 |
| 06 | OPT F4 | 2012.10.24 |
| 07 | SITE PLAN REVIEW | 2012.10.31 |
| 08 | PHASE II REVIEW | 2012.11.19 |
| 09 | PHASE II REVIEW | 2012.12.11 |
| 10 | REVISIONS | 2012.12.18 |
| 11 | REVISED ELEVS | 2013.1.18 |
| 12 | ADDENDA #1 | 2013.1.24 |
| 13 | SITE FOR Z.B.A. | 2013.1.25 |
| 14 | PERMIT SET | 2013.04.09 |
| 15 | ADDENDUM #1 | 2013.04.15 |

GRADE LINES ALTERED THIS SHEET

©studio951 Ltd.
THIS DRAWING AND ASSOCIATED SPECIFICATIONS IS COPYRIGHT AS DATED AND SHALL REMAIN IN THE PROPERTY OF THE ARCHITECT. NO PART OF THESE DOCUMENTS SHALL BE REPRODUCED IN ANY FORM OR BY ANY MEANS WITHOUT WRITTEN PERMISSION FROM THE ARCHITECT.



X 9 SOUTH ELEVATION - PARTIAL
1/8" = 1'-0"



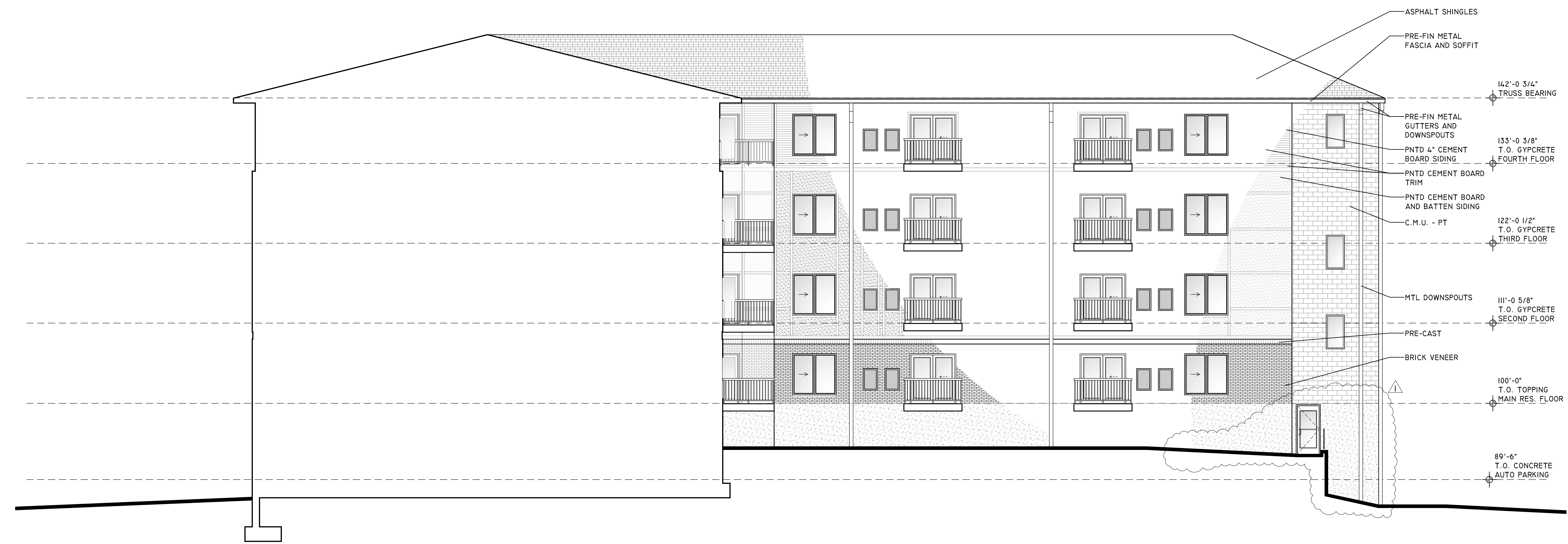
L 1 SOUTH ELEVATION - CONTINUED
1/8" = 1'-0"

BLUESTONE DEVELOPMENT - THE BRANDO
MULTI-FAMILY HOUSING
501 PARK AVENUE
OMAHA, NEBRASKA
ELEVATIONS

| NO. > | ISSUED FOR > | DATE > |
|-------|-------------------|------------|
| 01 | PRICING | 2012.8.03 |
| 02 | EVALUATION D.E.P. | 2012.8.17 |
| 03 | EVAL. ON-STRT PK | 2012.9.18 |
| 04 | OPT F3 REV UNITS | 2012.10.18 |
| 05 | F3 REVISED | 2012.10.22 |
| 06 | OPT F4 | 2012.10.24 |
| 07 | SITE PLAN REVIEW | 2012.10.31 |
| 08 | PHASE II REVIEW | 2012.11.19 |
| 09 | PHASE II REVIEW | 2012.12.11 |
| 10 | REVISIONS | 2012.12.18 |
| 11 | REVISED ELEV | 2013.1.18 |
| 12 | ADDENDA #1 | 2013.1.24 |
| 13 | SITE FOR Z.B.A. | 2013.1.25 |
| 14 | PERMIT SET | 2013.04.08 |
| 15 | ADDENDUM #1 | 2013.04.15 |



©studio951 Ltd.
THIS DRAWING AND ASSOCIATED SPECIFICATIONS IS COPYRIGHT AS DATED AND SHALL REMAIN IN THE PROPERTY OF THE ARCHITECT. NO PART OF THESE DOCUMENTS SHALL BE REPRODUCED IN ANY FORM OR BY ANY MEANS WITHOUT WRITTEN PERMISSION FROM THE ARCHITECT.



U 9 EAST ELEVATION
1/8" = 1'-0"



W 1 WEST ELEVATION
1/8" = 1'-0"

BLUESTONE DEVELOPMENT - THE BRANDO
MULTI-FAMILY HOUSING
501 PARK AVENUE
OMAHA, NEBRASKA
ELEVATIONS

| NO. | ISSUED FOR | DATE |
|-----|-------------------|------------|
| 01 | PRICING | 2012.8.03 |
| 02 | EVALUATION D.E.P. | 2012.8.17 |
| 03 | EVAL. ON-STRT PK | 2012.9.18 |
| 04 | OPT F3 REV UNITS | 2012.10.18 |
| 05 | F3 REVISED | 2012.10.22 |
| 06 | OPT F4 | 2012.10.24 |
| 07 | SITE PLAN REVIEW | 2012.10.31 |
| 08 | PHASE II REVIEW | 2012.11.19 |
| 09 | PHASE II REVIEW | 2012.12.11 |
| 10 | REVISIONS | 2012.12.18 |
| 11 | REVISED ELEV | 2013.1.18 |
| 12 | ADDENDA #1 | 2013.1.24 |
| 13 | SITE FOR Z.B.A. | 2013.1.25 |
| 14 | PERMIT SET | 2013.04.09 |
| 15 | ADDENDUM #1 | 2013.04.15 |

GRADE LINES ALTERED THIS SHEET

| NO. | ISSUED FOR: | DATE: |
|-----|-------------------|------------|
| 01 | PRICING | 2012.8.03 |
| 02 | EVALUATION D.E.P. | 2012.8.17 |
| 03 | EVAL. ON-STRTY PK | 2012.9.18 |
| 04 | OPT F3 REV UNITS | 2012.10.18 |
| 05 | F3 REVISED | 2012.10.22 |
| 06 | OPT F4 | 2012.10.24 |
| 07 | SITE PLAN REVIEW | 2012.10.31 |
| 08 | PHASE II REVIEW | 2012.11.09 |
| 09 | PHASE II REVIEW | 2012.12.11 |
| 10 | REVISIONS | 2013.1.18 |
| 11 | REVISSED ELEV | 2013.1.18 |
| 12 | ADDENDA #1 | 2013.1.24 |
| 13 | SITE FOR Z.B.A. | 2013.1.25 |
| 14 | PERMIT SET | 2013.04.09 |
| 15 | ADDENDA #1 | 2013.04.10 |

DOOR HARDWARE NOTES:
NOTE 1 - PROVIDE ELECTRONIC KEY FOB SECURITY ACCESS SYSTEM. FOB TO UNLOCK DOOR HARDWARE FROM EXTERIOR.
NOTE 2 - PROVIDE SECURITY ACCESS SYSTEM NOTED ABOVE PLUS KEY PAD ACTIVATED PHONE SYSTEM.
NOTE 3 - PROVIDE MAGNETIC DOOR HOLD OPEN TO BE TIED INTO FIRE ALARM SYSTEM. PROVIDE RIM PANIC.
NOTE 4 - INSULATED OVERHEAD SECTIONAL DOOR WITH PROXIMITY CARD READER, PHOTO EYE REVERSE SAFETY OPERATION, VEHICLE LOOP OR MOTION DETECTOR ACTIVATION OF DOOR OPENER MOTOR AND TIMER FOR CLOSING OPERATION.

| MARK | DOOR | | | | FRAME | | | | HARDWARE | | | | | | | REMARKS | | | | | | |
|------|--------|--------|-----------|----------|----------|--------|---------|--------|----------|----------|--------|------------|------|------|-------------|---------|------------|-----------|-----------|--------|-------------|--------|
| | WIDTH | HEIGHT | THICKNESS | MATERIAL | MATERIAL | FINISH | TYPE | FINISH | BUTTS | LOCK | CLOSER | KICK PLATE | PULL | PUSH | EXIT DEVICE | | FLOOR STOP | WALL STOP | THRESHOLD | FINISH | FIRE RATING | |
| 1 | 3'-0" | 7'-0" | 1 3/4" | AL AN | B | AL AN | B | PT | 3 | ENTRANCE | • | • | • | • | • | • | • | • | • | BRZ | 90 | NOTE 1 |
| 2 | 3'-0" | 7'-0" | 1 3/4" | HM | PT | 3 | PASSAGE | • | • | • | • | • | • | • | • | • | • | • | • | BRZ | 90 | |
| 3 | 3'-0" | 7'-0" | 1 3/4" | HM | PT | 3 | CLOSET | • | • | • | • | • | • | • | • | • | • | • | • | BRZ | 90 | |
| 4 | 3'-0" | 7'-0" | 1 3/4" | HM | PT | 3 | CLOSET | • | • | • | • | • | • | • | • | • | • | • | • | BRZ | 90 | |
| 5 | 3'-0" | 7'-0" | 1 3/4" | HM | PT | 3 | PASSAGE | • | • | • | • | • | • | • | • | • | • | • | • | BRZ | 90 | |
| 6 | 3'-0" | 7'-0" | 1 3/4" | HM | PT | 3 | CLOSET | • | • | • | • | • | • | • | • | • | • | • | • | BRZ | 90 | |
| 7 | 3'-0" | 7'-0" | 1 3/4" | HM | PT | 3 | CLOSET | • | • | • | • | • | • | • | • | • | • | • | • | BRZ | 90 | |
| 8 | 2'-4" | 7'-0" | 1 3/4" | HM | PT | 3 | STORAGE | • | • | • | • | • | • | • | • | • | • | • | • | BRZ | 90 | |
| 9 | 3'-0" | 7'-0" | 1 3/4" | HM | PT | 3 | CLOSET | • | • | • | • | • | • | • | • | • | • | • | • | BRZ | 90 | NOTE 1 |
| 10 | 3'-0" | 7'-0" | 1 3/4" | HM | PT | 3 | PASSAGE | • | • | • | • | • | • | • | • | • | • | • | • | BRZ | 90 | |
| 11 | 3'-0" | 7'-0" | 1 3/4" | HM | PT | 3 | CLOSET | • | • | • | • | • | • | • | • | • | • | • | • | BRZ | 90 | |
| 12 | 3'-0" | 7'-0" | 1 3/4" | HM | PT | 3 | CLOSET | • | • | • | • | • | • | • | • | • | • | • | • | BRZ | 90 | |
| 13 | 3'-0" | 7'-0" | 1 3/4" | HM | PT | 3 | CLOSET | • | • | • | • | • | • | • | • | • | • | • | • | BRZ | 90 | |
| 14 | 3'-0" | 7'-0" | 1 3/4" | HM | PT | 3 | CLOSET | • | • | • | • | • | • | • | • | • | • | • | • | BRZ | 90 | |
| 15 | 3'-0" | 7'-0" | 1 3/4" | HM | PT | 3 | CLOSET | • | • | • | • | • | • | • | • | • | • | • | • | BRZ | 90 | |
| 16 | 16'-0" | 8'-0" | 1 3/4" | STL | PF | D | WD | CL | OPENER | • | • | • | • | • | • | • | • | • | • | BRZ | 90 | NOTE 4 |
| 17 | 3'-0" | 7'-0" | 1 3/4" | HM | PT | 3 | PASSAGE | • | • | • | • | • | • | • | • | • | • | • | • | BRZ | 90 | |
| 18 | 3'-0" | 7'-0" | 1 3/4" | AL AN | B | AL AN | B | PT | 3 | ENTRANCE | • | • | • | • | • | • | • | • | • | BRZ | 90 | NOTE 1 |
| 19 | 3'-0" | 7'-0" | 1 3/4" | AL AN | B | AL AN | B | PT | 3 | ENTRANCE | • | • | • | • | • | • | • | • | • | BRZ | 90 | NOTE 1 |

| MARK | DOOR | | | | FRAME | | | | HARDWARE | | | | | | | REMARKS | | | | | | |
|------|----------|--------|-----------|----------|----------|--------|---------|--------|----------|----------|--------|------------|------|------|-------------|---------|------------|-----------|-----------|--------|-------------|--------------------------|
| | WIDTH | HEIGHT | THICKNESS | MATERIAL | MATERIAL | FINISH | TYPE | FINISH | BUTTS | LOCK | CLOSER | KICK PLATE | PULL | PUSH | EXIT DEVICE | | FLOOR STOP | WALL STOP | THRESHOLD | FINISH | FIRE RATING | |
| 20 | 3'-0" | 7'-0" | 1 3/4" | WD | ST | M | WD | PT | 3 | OFFICE | • | • | • | • | • | • | • | • | • | BRZ | 90 | FULL LITE |
| 21 | 3'-0" | 7'-0" | 1 3/4" | WD | ST | M | WD | PT | 3 | OFFICE | • | • | • | • | • | • | • | • | • | BRZ | 90 | FULL LITE |
| 22 | 3'-0" | 7'-0" | 1 3/4" | AL AN | B | AL AN | B | PT | 3 | ENTRANCE | • | • | • | • | • | • | • | • | • | BRZ | 90 | FULL LITE |
| 23 | 9'-0" | 7'-6" | 1 3/4" | STL | PF | D | WD | CL | KEY LOCK | • | • | • | • | • | • | • | • | • | • | BRZ | 90 | FULL GLASS OHD |
| 24 | 3'-0" | 7'-0" | 1 3/4" | WD | ST | M | WD | PT | 3 | OFFICE | • | • | • | • | • | • | • | • | • | BRZ | 90 | FULL LITE |
| 25 | 7'-0" | 7'-6" | 1 3/4" | STL | PF | D | WD | CL | KEY LOCK | • | • | • | • | • | • | • | • | • | • | BRZ | 90 | FULL GLASS OHD |
| 26 | 9'-0" | 7'-6" | 1 3/4" | STL | PF | D | WD | CL | KEY LOCK | • | • | • | • | • | • | • | • | • | • | BRZ | 90 | INSULATED FULL GLASS OHD |
| 27 | PR 3'-0" | 7'-0" | 1 3/4" | AL AN | B | AL AN | B | PT | 6 | ENTRANCE | • | • | • | • | • | • | • | • | • | BRZ | 90 | FULL LITE |
| 28 | 3'-0" | 7'-0" | 1 3/4" | WD | ST | M | WD | PT | 3 | OFFICE | • | • | • | • | • | • | • | • | • | BRZ | 90 | FULL LITE |
| 29 | 3'-0" | 7'-0" | 1 3/4" | WD | ST | M | WD | PT | 3 | CLOSET | • | • | • | • | • | • | • | • | • | BRZ | 90 | |
| 30 | 3'-0" | 7'-0" | 1 3/4" | WD | ST | M | WD | PT | 3 | PRIVACY | • | • | • | • | • | • | • | • | • | BRZ | 90 | |
| 31 | 3'-0" | 7'-0" | 1 3/4" | WD | ST | M | WD | PT | 3 | CLOSET | • | • | • | • | • | • | • | • | • | BRZ | 90 | |
| 32 | 3'-0" | 7'-0" | 1 3/4" | WD | ST | M | WD | PT | 3 | PRIVACY | • | • | • | • | • | • | • | • | • | BRZ | 90 | |
| 33 | PR 3'-0" | 7'-0" | 1 3/4" | AL AN | B | AL AN | B | PT | 6 | ENTRANCE | • | • | • | • | • | • | • | • | • | BRZ | 90 | FULL LITE |
| 34 | PR 3'-0" | 7'-0" | 1 3/4" | AL AN | B | AL AN | B | PT | 6 | ENTRANCE | • | • | • | • | • | • | • | • | • | BRZ | 90 | NOTE 2 |
| 35 | 3'-0" | 7'-0" | 1 3/4" | HM | PT | 3 | PASSAGE | • | • | • | • | • | • | • | • | • | • | • | • | BRZ | 90 | NOTE 3 |
| 36 | 3'-0" | 7'-0" | 1 3/4" | HM | PT | 3 | PASSAGE | • | • | • | • | • | • | • | • | • | • | • | • | BRZ | 90 | NOTE 3 |
| 37 | 3'-0" | 7'-0" | 1 3/4" | HM | PT | 3 | CLOSET | • | • | • | • | • | • | • | • | • | • | • | • | BRZ | 90 | |
| 38 | 3'-0" | 7'-0" | 1 3/4" | HM | PT | 3 | PASSAGE | • | • | • | • | • | • | • | • | • | • | • | • | BRZ | 90 | |

| MARK | DOOR | | | | FRAME | | | | HARDWARE | | | | | | | REMARKS | | | | | | |
|------|-------|--------|-----------|----------|----------|--------|---------|--------|----------|------|--------|------------|------|------|-------------|---------|------------|-----------|-----------|--------|-------------|--------|
| | WIDTH | HEIGHT | THICKNESS | MATERIAL | MATERIAL | FINISH | TYPE | FINISH | BUTTS | LOCK | CLOSER | KICK PLATE | PULL | PUSH | EXIT DEVICE | | FLOOR STOP | WALL STOP | THRESHOLD | FINISH | FIRE RATING | |
| 39 | 3'-0" | 7'-0" | 1 3/4" | HM | PT | 3 | PASSAGE | • | • | • | • | • | • | • | • | • | • | • | • | BRZ | 90 | |
| 40 | 3'-0" | 7'-0" | 1 3/4" | HM | PT | 3 | CLOSET | • | • | • | • | • | • | • | • | • | • | • | • | BRZ | 90 | |
| 41 | 3'-0" | 7'-0" | 1 3/4" | HM | PT | 3 | PASSAGE | • | • | • | • | • | • | • | • | • | • | • | • | BRZ | 90 | NOTE 3 |
| 42 | 3'-0" | 7'-0" | 1 3/4" | HM | PT | 3 | PASSAGE | • | • | • | • | • | • | • | • | • | • | • | • | BRZ | 90 | NOTE 3 |
| 43 | 3'-0" | 7'-0" | 1 3/4" | HM | PT | 3 | PASSAGE | • | • | • | • | • | • | • | • | • | • | • | • | BRZ | 90 | NOTE 3 |
| 44 | 3'-0" | 7'-0" | 1 3/4" | HM | PT | 3 | PASSAGE | • | • | • | • | • | • | • | • | • | • | • | • | BRZ | 90 | |
| 45 | 3'-0" | 7'-0" | 1 3/4" | HM | PT | 3 | PASSAGE | • | • | • | • | • | • | • | • | • | • | • | • | BRZ | 90 | |

| MARK | DOOR | | | | FRAME | | | | HARDWARE | | | | | | | REMARKS | | | | | | |
|------|-------|--------|-----------|----------|----------|--------|---------|--------|----------|------|--------|------------|------|------|-------------|---------|------------|-----------|-----------|--------|-------------|--------|
| | WIDTH | HEIGHT | THICKNESS | MATERIAL | MATERIAL | FINISH | TYPE | FINISH | BUTTS | LOCK | CLOSER | KICK PLATE | PULL | PUSH | EXIT DEVICE | | FLOOR STOP | WALL STOP | THRESHOLD | FINISH | FIRE RATING | |
| 46 | 3'-0" | 7'-0" | 1 3/4" | HM | PT | 3 | PASSAGE | • | • | • | • | • | • | • | • | • | • | • | • | BRZ | 90 | |
| 47 | 3'-0" | 7'-0" | 1 3/4" | HM | PT | 3 | CLOSET | • | • | • | • | • | • | • | • | • | • | • | • | BRZ | 90 | |
| 48 | 3'-0" | 7'-0" | 1 3/4" | HM | PT | 3 | PASSAGE | • | • | • | • | • | • | • | • | • | • | • | • | BRZ | 90 | NOTE 3 |
| 49 | 3'-0" | 7'-0" | 1 3/4" | HM | PT | 3 | PASSAGE | • | • | • | • | • | • | • | • | • | • | • | • | BRZ | 90 | NOTE 3 |
| 50 | 3'-0" | 7'-0" | 1 3/4" | HM | PT | 3 | PASSAGE | • | • | • | • | • | • | • | • | • | • | • | • | BRZ | 90 | |

| MARK | DOOR | | | | FRAME | | | | HARDWARE | | | | | | | REMARKS | | | | | | |
|------|-------|--------|-----------|----------|----------|--------|---------|--------|----------|------|--------|------------|------|------|-------------|---------|------------|-----------|-----------|--------|-------------|--------|
| | WIDTH | HEIGHT | THICKNESS | MATERIAL | MATERIAL | FINISH | TYPE | FINISH | BUTTS | LOCK | CLOSER | KICK PLATE | PULL | PUSH | EXIT DEVICE | | FLOOR STOP | WALL STOP | THRESHOLD | FINISH | FIRE RATING | |
| 51 | 3'-0" | 7'-0" | 1 3/4" | HM | PT | 3 | PASSAGE | • | • | • | • | • | • | • | • | • | • | • | • | BRZ | 90 | |
| 52 | 3'-0" | 7'-0" | 1 3/4" | HM | PT | 3 | CLOSET | • | • | • | • | • | • | • | • | • | • | • | • | BRZ | 90 | |
| 53 | 3'-0" | 7'-0" | 1 3/4" | HM | PT | 3 | PASSAGE | • | • | • | • | • | • | • | • | • | • | • | • | BRZ | 90 | NOTE 3 |
| 54 | 3'-0" | 7'-0" | 1 3/4" | HM | PT | 3 | PASSAGE | • | • | • | • | • | • | • | • | • | • | • | • | BRZ | 90 | NOTE 3 |
| 55 | 3'-0" | 7'-0" | 1 3/4" | HM | PT | 3 | CLOSET | • | • | • | • | • | • | • | • | • | • | • | • | BRZ | 90 | |
| 56 | 3'-0" | 7'-0" | 1 3/4" | HM | PT | 3 | PASSAGE | • | • | • | • | • | • | • | • | • | • | • | • | BRZ | 90 | |

GENERAL DOOR NOTES:
- PROVIDE MANUAL OPERATION FOR ALL OVERHEAD DOORS EXCEPT DOOR I6 AT THE PARKING GARAGE.

P 13 DOOR ELEVATIONS
1/4" = 1'-0"

| NO | ROOM DESIGNATION | FLOOR | BASE | WALLS | | | | CEILING | REMARKS |
|----|------------------|----------|------|-----------|-----------|-----------|-----------|----------|---------|
| | | | | NORTH | SOUTH | EAST | WEST | | |
| 01 | STAIR TOWER 1 | CONCRETE | NA | CONC-PT | CONC-PT | CONC-PT | CONC-PT | NA | |
| 02 | MAINT | CONCRETE | NA | G.W.B.-PT | G.W.B.-PT | G.W.B.-PT | G.W.B.-PT | CONCRETE | |
| 03 | ELEV EQUIP | CONCRETE | NA | G.W.B.-PT | G.W.B.-PT | G.W.B.-PT | G.W.B.-PT | CONCRETE | |
| 04 | ELEV LOBBY 1 | CONCRETE | NA | GLASS | CONCRETE | CONCRETE | CONCRETE | CONCRETE | |
| 05 | STORM SHELTER | CONCRETE | NA | CONCRETE | CONCRETE | CONCRETE | CONCRETE | CONCRETE | |
| 06 | SHOP | CONCRETE | NA | CONCRETE | CONCRETE | CONCRETE | CONCRETE | CONCRETE | |
| 07 | ELEV LOBBY 2 | CONCRETE | NA | GLASS | CONCRETE | CONCRETE | CONCRETE | CONCRETE | |
| 08 | POOL EQUIP | CONCRETE | NA | G.W.B.-PT | G.W.B.-PT | G.W.B.-PT | G.W.B.-PT | CONCRETE | |
| 09 | ELEV EQUIP | CONCRETE | NA | G.W.B.-PT | G.W.B.-PT | G.W.B.-PT | G.W.B.-PT | CONCRETE | |
| 10 | STAIR TOWER 2 | CONCRETE | NA | CONC-PT | CONC-PT | CONC-PT | CONC-PT | NA | |
| 11 | WATER | CONCRETE | NA | G.W.B. | G.W.B. | G.W.B. | G.W.B. | CON | |

ADDENDUM



Date: April 15, 2013

Project: Brando

To: Dave Johnson
Studio 951

Project No.: 13017-101

Addendum No.: 1

CC:

GENERAL

ELECTRICAL:

1. The contractor shall include a \$50,000.00 allowance for courtyard lighting and power, parking lot lighting, and pool equipment connections.

CHANGES TO PROJECT DRAWINGS

MECHANICAL

1. SHEET M4.01 – PLUMBING FIXTURE SCHEDULE
 - a. Counter Lavatory (CL-1 & CL-2): CL-1 & CL-2 shall be ProFlo Model PF194R in lieu of American Standard Model that was specified. All other notes and accessories shall apply.
 - b. Kitchen Sink (KS-1): shall be stainless steel ProFlo Model PFT172273 sink with Moen CA87316C chrome finished faucet in lieu of models specified. Provide with strainer and trim as required.
2. SHEET M4.01 – DOMESTIC WATER HEATER SCHEDULE
 - a. Domestic Water Heater (DWH-1) 40 gallon "Lowboy" Model shall be installed in the following Units A7, B1, B1B, B1B2, B3 & B6.
 - b. Domestic Water Heater (DWH-2) shall be a tall model water heater in lieu of "Lowboy" as scheduled. DWH-2 to be State Model ES6 52 DORT, 6kW and shall be installed in all D units.
 - c. Add Domestic Water Heater (DWH-5) to the schedule. DWH-5 shall be a tall State Model ES6 40 DORT 6kW heater. DWH-5 shall be installed in the following units: A1, A1B, A2, A3, A4, A5, A6, A6A, B2, B2B, B4, B5 and all C units.

ELECTRICAL

1. SHEET E1.02
 - a. The contractor shall provide thirty-four (34) Type "A4" fixtures in the corridor, in lieu of the twenty-two (22) shown. Space them at 12'0" on center.
2. SHEETS E1.03, E1.04, and E1.05
 - a. The contractor shall provide thirty-five (35) Type "A4" fixtures in the corridor for each floor, in lieu of the twenty-three (23) shown. Space them at 12'0" on center.

By:

Steve Jensen

Date:

4/15/13