

ADDENDUM #5
KEARNEY REGIONAL AIRPORT
NEW HANGAR
KEARNEY, NEBRASKA
1238

Wilkins Hinrichs Stober Architects, L.L.C.
2908 West 39th Street, Suite A
Kearney, Nebraska 68845
308-237-5787

Date Issued: April 8, 2013
Bid Date: April 2, 2013
Revised Bid Date: April 9, 2013

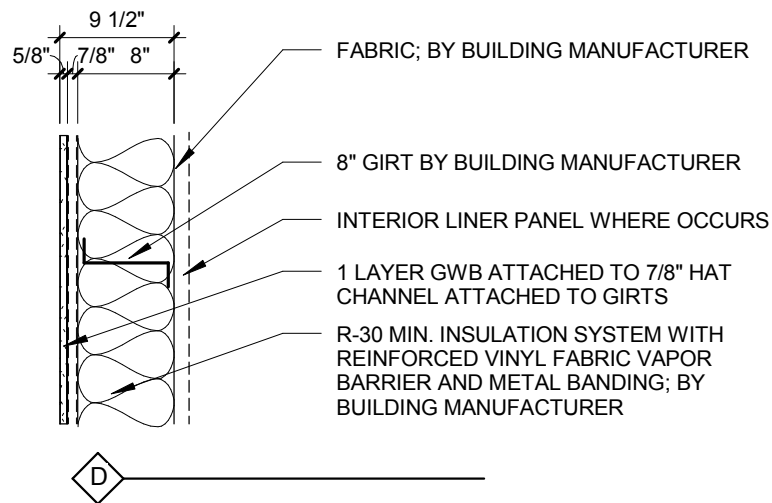
TO ALL BID DOCUMENT HOLDERS OF RECORD:

Acknowledge receipt of this addendum by inserting its number in the space provided on the BID FORM. Failure to do so may subject Bidder to disqualification. This Addendum forms a part of the BIDDING DOCUMENTS and modifies them as follows.

-
- Addendum #5 - #1 SPECIFICATIONS SECTION 07 9005 – JOINT SEALERS**
Contractors to reference what is specified in 07-9005 Joint Sealers, not 03-3000 Cast-in-place Concrete and not 32-1373 Concrete Paving Joint Sealers.
- Addendum #5 - #2 SHEET A2.0 – ENLARGED FLOOR PLANS**
INTERIOR WALL ASSEMBLIES: For interior wall Type “D” use only one layer of GWB attached to 7/8” hat channel attached to girts, as shown on attachment 1/A1 to Addendum No. 5 dated April 8, 2013.
- Addendum #5 - #3 SHEET E1.1 – FIRST FLOOR PLAN – LIGHTING**
Add Type 4 exit sign and button switch (Key Note 5) to exit doors located at gridline 8 on west side of building. Connect exit sign to nearest unswitched circuit serving this area. Connect button switch to lighting control panel ‘LCP’.
- Addendum #5 - #4 SHEET E1.1 – FIRST FLOOR PLAN – LIGHTING**
Connect Type 9 exterior wall pack shown on west side of building between grid lines C & D to emergency power inverter located in hangar northeast corner outside Mechanical Room 2. Extend normal power circuit to next downstream fixture.
- Addendum #5 - #5 SHEET E1.1 – FIRST FLOOR PLAN – LIGHTING**
Add new Type 11 photo luminescent exit sign to door located in movable partition door on east side of building at grid lines F & G. Provide and install in accordance with manufacturers recommendations Sure-Lite PHL 1 R BA or equal.
- Addendum #5 - #6 SHEET E1.1 – FIRST FLOOR PLAN – LIGHTING**
Connect Type 9 exterior wall pack shown on east side of building between grid lines G & H to emergency power inverter located in hangar southwest corner at grid line 2.

GENERALS

Central Contracting Corp, Kearney	308-234-2421	308-237-4767
Sampson Construction, Kearney	308-865-1375	308-865-1381
Hampton Enterprises, Lincoln	402-489-9287	402-489-9287
Barry Larson and Son, Omaha	402-571-3838	402-571-3939
Boyd Jones Construction, Lincoln	402-553-1804	402-553-5894
BD Construction-Kearney	308-234-1836	308-234-9606
McCauley Constructors, CO	970-686-6300	970-686-6320
Chief Construction, Kearney	308-238-2754	308-389-6704
Seneca Companies, Des Moines	515-261-7711	515-262-2469



1
A-1

ADDENDUM NO. 5 INTERIOR WALL ASSEMBLIES

SCALE: 3/4" = 1'-0"