



ADDENDUM NO. 3

1.01 NOTICE TO BIDDERS

- A. Date: 22 March 2013
- B. From: Bahr Vermeer and Haecker Architects, Ltd.
- C. To: Prospective Bidders.
- D. Project: Lexington Public Schools Lexington Middle School and Community Recreation Facility Addition 100% Contract Documents
- E. This addendum is issued by the Architect to all bidders of record prior to receipt of proposals. Bidders shall acknowledge receipt of this addendum by so indicating on the Bid Form. Failure to do so may subject Bidder to disqualification.
- F. All information and instructions given herein shall become a part of the Contract Documents.

1.02 SPECIFICATIONS

- A. Advertisement for Bids:
 - 1. See Revised Advertisement for Bids attached:
 - a. Clarify Bid Package No. 25.
 - b. Clarify Bid Package No. 27.
 - c. Revise Bid Package No. 30.
 - d. Revise Bid Package No. 31.
 - e. Add Bid Package No. 31.1 - 321816.13 Playground Protective Surfacing.
 - f. Clarify Bid Package No. 35.
- B. Section 004100 Bid Form:
 - 1. See Revised 004100 Bid Form attached:
 - a. Clarify Bid Package No. 25.
 - b. Clarify Bid Package No. 27.
 - c. Revise Bid Package No. 30.
 - d. Revise Bid Package No. 31.
 - e. Add Bid Package No. 31.1 - 321816.13 - Playground Protective Surfacing
 - f. Clarify Bid Package No. 35.
 - g. Revise "Changes to the Work" Change Order credit overhead and profit percentage.
- C. Section 012100 Allowances:
 - 1. Delete Entire Section. There are no Allowances.

- D. Section 012300 Alternates:
1. See Revised 012000 Alternates attached:
 - a. Revise Schedule of Alternates Subparagraph Headings.
 - b. Clarify Alternate No. 2-8 description for mechanical and electrical connections Base Bid work.
 - c. Add Alternate No. 9.
- E. Section 084313 Aluminum Framed Storefronts:
1. Revise Part 2.02.A.3 Glazing Position to be Center Set in lieu of Front Set.
 2. Delete Part 2.02.A.4 Structural Silicone Glazed Mullions.
- F. Section 087100 Door Hardware:
1. Add General Note to Part 2.01:
Cylinders and Keying shown for reference only. Cylinders and Keys to be furnished by Owner, installed by Construction Manager.
 2. Revise HDWE SET 9.0: Add Rockwood Kickplate (K1050 10x2 LDW 4BE CSK) to Door B120 and B121 (pull side).
 3. Revise HDWE SET 23.0: Add Rockwood Kickplate (K1050 10x2 LDW 4BE CSK) to Door B122.2, B122.3, and B143.1.
 4. Clarify HDWE SET 26.0: Door B136.1 Door Closer shall have Hold Open option.
- G. Section 096466 Wood Athletic Flooring:
1. Part 1.02 Related Requirements: Add Section 012300 Alternates.
- H. Section 096500 Resilient Flooring:
1. Part 2.04: Revise Resilient Base type to Standard Rubber, 4-1/8" Height to Standard 4", Delete premolded external and internal corners.
- I. Section 096566 Resilient Athletic Flooring:
1. Part 2.01: Add Gerbert Rexcourt, Shaw Rexcourt, and Ecore Everlast products to list of approved products.
- J. Section 105100 Lockers:
1. Part 2.01: Add Olympus Lockers as an Additional Approved Manufacturer.
- K. Section 321816.13 Playground Protective Surfacing:
1. Part 2.01.A.2: Tile Thickness to be 2-1/2" thick tile for 6' critical fall height in accordance with ASTM F1292.

1.03 DRAWINGS

- A. Sheet A6.3 Details:
1. Details R8, M13, M19, J1: Delete note "072510 Fluid Applied Air Barrier" at roof curbs where TPO Roof Membrane wraps up curbs.
- B. Sheet A7.2
1. Revise Frame Type A38 (located on sheet grid A-22) to Type A39 to correspond to Vestibule B130 interior storefront frame.

2. Delete the top horizontal 7" intermediate frame from Frame Type A38 (located on sheet grid P-23).
- C. Sheet A8.15 Interior Elevations:
1. CRF Admin Desk Plan is attached. The original drawing did not print.
- D. Sheet A9.1 Room Finish and Materials List:
1. Revise Materials List 096500 Resilient Base RB-1 and RB-2 Style, Size, and Accessories to: See Specifications.
- E. Sheet S2.0 General Notes:
1. Add Note to 3.1 Steel:
- J. Open-web steel joists shall be designed such that the space between diagonal web members remain clear of vertical members where mech ducts pass through the joist.

See Mechanical and Electrical Addenda attached.

END OF ADDENDUM

Issued By: Bryan Solko AIA, BVH Architects

Date: 22 March 2013

cc: Submittal Exchange

BAHR VERMEER HAECKER ARCHITECTS

440 NORTH 8TH STREET STE 100
1425 JONES STREET

LINCOLN NE 68508
OMAHA NE 68102

402 475 4551
402 345 3060

bvh.com

Lexington Public Schools
Advertisement for Bids
Bid Packages No. 10 thru No. 43

Notice is hereby given that Lexington Public Schools is soliciting bids for the LEXINGTON MIDDLE SCHOOL / COMMUNITY RECREATION FACILIT ADDITION & RENOVATION in Lexington, Nebraska. .

Sealed bids, for the packages described below, will be received until 2:00 P.M., March 28, 2013 at the office of Superintendent – Lexington Public Schools, 300 South Washington Street, P.O. Box 890, Lexington, NE 68850. Bids will be publicly opened and read aloud.

All bids must be on the forms provided. Bids received after the 2:00 P.M. deadline will not be considered and will be returned unopened.

ALL BIDDERS MUST USE THE BID FORM SUPPLIED IN THE PROJECT SPECIFICATIONS FOR SUBMISSION OF THEIR BIDS. FAILURE TO USE THE PROVIDED BID FORM WILL BE CAUSE FOR REJECTION OF THE BID.

Bid Package No. 10 – Section 02 4100 – Demolition – This bid package includes all materials, labor, and equipment as required for the selective building demolition for building tie-ins. This bid package shall include all dump fees required for the disposal of demolition materials. All salvaged material listed shall be returned to owner.

Bid Package No. 11 – Sections 03 3000 and 03 3001 – Cast-In-Place Concrete and Interior Cast-In-Place Concrete Slabs for Polished Finish – This bid package includes all materials, labor, and equipment as required for the installation of interior concrete slabs including elevated concrete slabs, stairs and other flat concrete and interior concrete slabs for polished finish. Include reinforcing, welded wire mesh, or rebar as indicated in concrete slabs.

Bid Package No. 12 – Section 03 3520 – Polished Concrete Floors – This bid package includes all materials, labor, and equipment as required for the polishing of concrete floors. This bid package also includes all sealants and joint sealants required for the polishing of concrete floors.

Bid Package No. 13 – Section 03 5400 – Cast Underlayment – This bid package includes all materials, labor, equipment as required for the installation of the cast underlayment system for sound control on the second floor.

Bid Package No. 14 – Sections 040120 and 040513 – Masonry Restoration & Cleaning and Stone & Masonry Restoration Mortaring – This bid package includes all materials, labor, and equipment as required for the restoration, cleaning, and tuck pointing of the existing masonry and stone to the extent shown.

Bid Package No. 15 – Sections 03 4500, 04 0511, 04 2000, 07 2100 (as it pertains to masonry installations), and 07 9513 (as it pertains to masonry installations) – Architectural Precast Concrete (Non-Structural Units), Masonry Mortaring and Grouting, Unit Masonry, Rigid Insulation, and Expansion Joint Cover Assemblies in Masonry - This bid package includes all materials, labor, and equipment for all architectural precast concrete, masonry, rigid insulation, and brick veneer installations. Include reinforcing material and labor as required for masonry installations. Labor to install structural steel embeds to be included in this package. Embeds shall be provided in Bid Package No. 16.

Bid Package No. 16 – Sections 05 1200, 05 2100, 05 3100, 05 5000, 05 5100, 05 5213, and 05 5315 - Structural Steel, Steel Joist Framing, Steel Decking, Metal Fabrications, Metal Stairs, Pipe & Tube Railings, and Metal Stairs and Ladders - This bid package includes all materials, labor and equipment as required for installation of all structural steel, steel joist framing, steel decking, metal fabrications, metal stairs, pipe & tube railings, and metal ladders. Structural steel trade contractor will coordinate their efforts with steel stud trade contractor and precast concrete trade contractor.

Bid Package No. 17 – Sections 06 1000– Rough Carpentry – This bid package includes all materials, labor, and equipment for installation of all dimensional lumber as backing, wall caps and other as shown.

Bid Package No. 18 – Sections 06 8205, 09 7200, 10 1101, 10 1400, 10 2113.19, 10 2123, 10 2601, 10 2800, 10 3100, 10 4400, 10 5100, 10 5617, 10 7500, and 11 5213 – FRP Panels, Tackable Wall Coverings, Visual Display Boards, Signage, Plastic Toilet Compartments, Cubicle Curtain, Wall and Corner Guards, Toilet Accessories, Manufactured Fireplaces, Fire Protection Specialties, Horizontal Display Shelf System, Lockers, Flagpoles, and Projection Screens – This bid package includes all materials, labor, and equipment to provide and install items in each section listed.

Bid Package No. 19 – Sections 06 4100 – Architectural Wood Casework – This bid package includes all materials, labor, and equipment required to install all casework, millwork, laminate countertops, and solid material countertops and sills.

Bid Package No. 20 – Sections 05 4000, 07 2100 (batt insulation), 07 8400, 07 9513 (pertaining to these sections), and 09 2116 – Cold-Formed Metal Framing, Insulation, Firestopping, Expansion Joint Cover Assemblies, and Gypsum Board Assemblies – This bid package includes all material, labor, and equipment required to install all cold-formed metal framing, metal stud installations, exterior wall sheathing, gypsum board installations, sound batt insulation, vapor barrier, and thermal batt insulation, firestopping, and expansion joint cover assemblies associated with these sections.

Bid Package No. 21 – Sections 07 1400 - Fluid-Applied Waterproofing and 07 2510 – Fluid-Applied Membrane Air Barrier – This Bid Package includes all materials, labor, and equipment required for installation of fluid-applied waterproofing and fluid-applied membrane air barrier. This bid package does not include fluid applied membrane air barrier behind Exterior Insulation and Finish System.

Bid Package No. 22 – Sections 07 2400 and 09 2513 – Exterior Insulation and Finish System and Exterior Soffit System – This bid package includes all materials, labor, and equipment required for installation of the exterior insulation and finish system and the exterior soffit system. This bid package also includes the EIFS manufacture approved Fluid-Applied Membrane Air Barrier behind the EIFS.

Bid Package No. 23 – Sections 07 4213, 07 5400, 07 6200, 07 7200, and 07 9513 (as it pertains to metal wall panel and roof installations) – Metal Wall Panels, Thermoplastic Membrane Roofing, Sheet Metal Flashing and Trim, Roof Accessories, and Expansion Joints – This bid package includes all materials, labor, and equipment as required for installation of metal wall panels, a complete roof system, sheet metal flashing and trim, roof accessories, and expansion joint cover assemblies in the roof.

Bid Package No. 24 – Section 07 9005 – Joint Sealers – This bid package includes all material, labor, and equipment for installations as shown for building construction only. Do not include joint sealers for concrete paving or sidewalks or joints sealers for polished concrete floors in this bid package.

Bid Package No. 25 – Sections 08 1113, 08 1416, 08 3100, and 08 7100 – Hollow Metal Frames, Flush Wood Doors, Access Doors & Panels, and Door Hardware – This bid package includes all materials, labor, and equipment as required for installation of all hollow metal frames, wood doors, access doors & panels, and door hardware. Door hardware cylinders to be furnished by Owner, installed by Construction Manager. Aluminum door and frame hardware to be furnished under Bid Package No. 25. Aluminum door and frame hardware to be installed under Bid Package No. 27.

Bid Package No. 26 – Section 08 3313 – Coiling Counter Doors – This bid package includes all materials, labor, and equipment required for the installation of the coiling counter door.

Bid Package No. 27 – Sections 08 4313, 08 4500, 08 4501, 08 5800, and 08 8000 – Aluminum-Framed Storefronts, Translucent Wall Assemblies, Display Case Doors, Aluminum Sliding Service Window, and Glazing – This bid package includes all materials, labor, and equipment required for installation of aluminum framed doors and storefronts, glass display case doors, aluminum sliding service windows, and glazing. Include glass and glazing for hollow metal framed doors and windows. Section 08 4500 – Translucent Wall Assemblies shall be an ‘ADD’ alternate to this Bid Package. Please see Section 01 2300 – Alternates for more information concerning Alternate No. 1. Aluminum door and frame hardware to be furnished under Bid Package No. 25. Aluminum door and frame hardware to be installed under Bid Package No. 27.

Bid Package No. 28 – Sections 09 0561 (as it pertains to Floor Tile) and 09 3000 – Common Work Results for Flooring Preparation and Tiling – This bid package includes all material, labor, and equipment for installation of all wall and floor tile and all transition strips associated with wall and floor tile.

Bid Package No. 29 – Sections 09 5100 and 09 8401 – Acoustical Ceilings and Cementitious Wood Fiber Wall Panels – This bid package includes all materials, labor, and equipment for installation of all acoustical ceilings and acoustical panels.

Bid Package No. 30 – Section 09 6466 Wood Athletic Flooring. This bid package includes all materials, labor, and equipment required to install, paint and finish wood athletic flooring. Please see Section 01 2300 – Alternates for more information on Alternate No. 9.

Bid Package No. 31 – Sections 09 0561 (as it pertains to Resilient Flooring, Resilient Athletic Flooring, and Carpeting), 09 6500, 09 6566, 09 6800, and ~~32 4846.13~~ – Common Work Results for Flooring Preparation, Resilient Flooring, Resilient Athletic Flooring, Carpeting, and ~~Playground Protective Surfacing~~ – This bid package includes all materials, labor, and equipment required for installation of common work results for flooring preparation, resilient flooring, resilient athletic flooring, carpeting, flooring accessories, and ~~playground protective surfacing~~. Section 09 0561 – Common Work Results for Flooring Preparation specifies an alternate adhesive for flooring material. The specified alternative adhesive for flooring material is not part of this Bid Package. Bidders providing a bid for this bid package shall provide a unit price for the alternate adhesive specified in Section 09 0561. Section 09 6005 – Water Vapor Emission Control System For Concrete Floors, which specifies a topical moisture mitigation system. The specified moisture mitigation system is not part of this Bid Package but Bidders providing a bid for this bid package shall provide a unit price for the moisture mitigation system specified in Section 09 6005.

Bid Package No. 31.1 – Section 32 1816.13 Playground Protective Surfacing. This bid package includes all materials, labor, and equipment required for installation of playground protective surfacing.

Bid Package No. 32 – Sections 09 0561 (as it pertains to Fluid-Applied Flooring) and 09 06700 – Common Work Results for Flooring Preparation and Fluid-Applied Flooring – This bid package includes all materials, labor, and equipment required for installation of common work results for flooring preparation, fluid-applied flooring, and all accessories. Section 09 0561 – Common Work Results for Flooring Preparation specifies an alternate adhesive for flooring material. The specified alternative adhesive for flooring material is not part of this Bid Package. Section

09 6005 – Water Vapor Emission Control System For Concrete Floors specifies a topical moisture mitigation system. The specified topical moisture mitigation system is not part of this Bid Package. Bidders providing a bid for this bid package shall provide a unit price for the moisture mitigation system specified in Section 09 6005.

Bid Package No. 33 – Section 09 9000 – Painting and Coating – This bid package includes all materials, labor, and equipment for wall paint and coating installations.

Bid Package No. 34 – Section 11 4000 – Food Service Equipment – This bid package includes all materials, labor, and equipment required for installation of the food service equipment. This Bid Package includes seven ‘ADD’ alternates. Please see Section 01 2300 – Alternates for more information on Alternates No. 2 thru No. 8.

Bid Package No. 35 – Section 11 6623 - Gymnasium Equipment - This bid package includes all materials, labor, and equipment for installation of specified athletic equipment and for relocation of selected existing gymnasium equipment. Structural support requirement information is to be provided as part of this bid package for steel roof joist supplier.

Bid Package No. 36 – Section 12 2400 – Window Shades – This bid package includes all materials, labor, and equipment required to install all window shades.

Bid Package No. 37 – Section 12 6613 - Telescoping Bleachers - This bid package includes all materials, labor, and equipment required for the installation of telescoping bleachers and for the relocation of selected existing bleachers.

Bid Package No. 38 – Section 14 2010 – Passenger Elevators – This bid package includes all materials, labor, and equipment required for the installation of passenger elevators.

Bid Package No. 39 – Sections 21 0500 and 21 1300 – Common Work Results for Fire Suppression and Fire Suppression Sprinkler Systems – This bid package includes all materials, labor and equipment as required for the installation of the fire sprinkler system in the existing school and in the new addition.

Bid Package No. 40 – Divisions 22 & 23 including Specification Sections – 22 0050, 22 0501, 22 0502, 22 0513, 22 0548, 22 0553, 22 0719, 22 1005, 22 1006, 22 3000, 22 4000, 23 0050, 23 0501, 23 0502, 23 0513, 23 0514, 23 0519, 23 0553, 23 0593, 23 0713, 23 0716, 23 0913, 23 0923, 23 0993, 23 2113, 23 2114, 23 2123, 23 2300, 23 2500, 23 3100, 23 3300, 23 3413, 23 3423, 23 3600, 23 3700, 23 3813, 23 5100, 23 5216, 23 6423, 23 7223, 23 7313 and 23 8101 – PLUMBING – This bid package includes all materials, labor, and equipment as required for plumbing including testing and inspections as outlined. **HVAC** – This bid package includes all materials, labor, and equipment required for installation of full HVAC systems including testing, balancing and other as outlined.

Bid Package No. 41 – Divisions 26, 27, 28 including Specification Sections 26 0101, 26 0501, 26 0519, 26 0526, 26 0529, 26 0534, 26 0536, 26 0537, 26 0553, 26 2200, 26 2413, 26 2416, 26 2717, 26 2726, 26 2817, 26 2818, 26 2913, 26 3213, 26 3600, 26 5100, 26 5600, 27 1005, 27 5117, 27 5124, 27 5132, and 28 3100 – This bid package includes all materials, labor, and equipment required for all electrical including specialty systems. Include permits, testing and other as required or outlined.

Bid Package No. 42 – Section 32 3120 – Vinyl Fence – This bid package includes all materials, labor, and equipment as required for the installation of the vinyl fencing.

Bid Package No. 43 – Section 33 9200 – Seeding – This bid package includes all materials, labor, and equipment required to provide seeding, mulch and other as specified to establish healthy stand of grass.

For purposes of preparing and submitting a bid, contractors may obtain plans and specifications from A & D Technical Supply Co., Inc., 1822 “N” Street - Lincoln, NE 68508, (402) 474-5454. A \$250.00 deposit check made out to Lexington Public Schools will be required to obtain plans and

specifications and will be returned when plans and specifications are returned to Lexington Public Schools.

All bidders must include a 5% bid bond or certified check made payable to Lexington Community Facilities Agency with their bid/proposal. Additionally each contractor will be required to furnish a Performance Bond and Labor and Material Payment Bond if they are awarded the contract. No proposal shall be withdrawn after opening without the consent of the Lexington Community Facilities Agency Board for a period of 30 days after the opening of the bids.

A pre-bid meeting will be held at the project site, (1100 North Washington Street, Lexington, NE 68850) on Tuesday, March 12, 2013 at 10:00 AM. This prebid time is your opportunity to examine the existing site. All potential bidders are strongly encouraged to attend. Bidders not attending the prebid meeting will be required to make arrangements to examine the facility.

Sales Tax: Project is exempt from Nebraska State Sales Tax. Bidding documents may be examined at the office of the Construction Manager – Paulsen, Inc., 1116 East Highway 30, Cozad, NE. (308) 784-3333. Bidding documents may also be examined at the on-site project office at 1208 North Washington Street and at the following exchanges:

Lincoln Builders Bureau, 5910 South 58th St., Suite C, Lincoln, NE 68516 – (402) 421-8332
Central Nebraska Plan Service, 420 S. Bryan Ave., North Platte, NE 69101 – (308) 696-1067
Kearney Builders Bureau, 1007 2nd Ave., Kearney, NE 68847 (308) 237-3101
Grand Island Builders Bureau, 309 West 2nd St., Grand Island, NE 68801 – (308) 382-9210
Lexington Chamber of Commerce, 302 E. 6th St., Lexington, NE 68850 – (308) 324-5504
Omaha Builders Exchange, 4255 S. 94th Street, Omaha, NE 68154 – (402) 593-6908
Hastings Builders Bureau, 301 S. Burlington, Hastings, NE 68901 – (402) 461-8400

BID FORM

To:
Lexington Public Schools
Board of Education
300 South Washington Street,
P.O. Box 890
Lexington, NE 68850

For:
Construction Of Addition & Renovation To Existing Lexington Middle School
Bid Packages No. 10 thru No. 43

Date: _____ (Bidder to enter date)

Submitted By: (Bidder to enter name & address)

Bidders Full Name _____

Address _____

City, State, Zip _____

Offer:

Bidder acknowledges that he/she has examined the plans and specifications and is thoroughly familiar with the project and project site.

Tie-ins to existing school must be scheduled to allow school operations to function without interruption. Bidder acknowledges that he/she is aware of potential phasing of this package as required to maintain full school operations. The Construction Manager's (Paulsen, Inc.) site superintendent will work with trade contractors to coordinate all operations in a manner that prevents school interruptions.

Bid Package No. 10 – Section 02 4100 – Demolition

This bid package includes all materials, labor, and equipment as required for the selective building demolition for building tie-ins. This bid package shall include all dump fees required for the disposal of demolition materials. All salvaged material listed shall be returned to owner.

Lump Sum Bid. _____ **dollars**
(\$ _____)

Bid Package No. 11 – Sections 03 3000 and 03 3001 – Cast-In-Place Concrete and Interior Cast-In-Place Concrete Slabs for Polished Finish

This bid package includes all materials, labor, and equipment as required for the installation of interior concrete slabs including elevated concrete slabs, stairs and other flat concrete and interior concrete slabs for polished finish. Include reinforcing, welded wire mesh, or rebar as indicated in concrete slabs.

Lump Sum Bid. _____ dollars
(\$ _____)

Bid Package No. 12 – Section 03 3520 – Polished Concrete Floors

This bid package includes all materials, labor, and equipment as required for the polishing of concrete floors. This bid package also includes all sealants required for the polishing of concrete floors.

Lump Sum Bid. _____ dollars
(\$ _____)

Bid Package No. 13 – Section 03 5400 – Cast Underlayment

This bid package includes all materials, labor, and equipment as required for the installation of the cast underlayment system for sound control on the second floor.

Lump Sum Bid. _____ dollars
(\$ _____)

Bid Package No. 14 – Sections 040120 and 040513 – Masonry Restoration & Cleaning and Stone & Masonry Restoration Mortaring

This bid package includes all materials, labor, and equipment as required for the restoration, cleaning, and tuck pointing of the existing masonry and stone to the extent shown.

Lump Sum Bid. _____ dollars
(\$ _____)

Bid Package No. 15 – Sections 03 4500, 04 0511, 04 2000, 07 2100 (as it pertains to masonry installations), and 07 9513 (as it pertains to masonry installations) – Architectural Precast Concrete (Non-Structural Units), Masonry Mortaring and Grouting, Unit Masonry, Rigid Insulation, and Expansion Joint Cover Assemblies in Masonry

This bid package includes all materials, labor, and equipment for all architectural precast concrete, masonry, rigid insulation, and brick veneer installations. Include reinforcing material and labor as required for masonry installations. Labor to install structural steel embeds to be included in this package. Embeds shall be provided in Bid Package No. 16.

Lump Sum Bid. _____ dollars
(\$ _____)

Bid Package No. 16 – Sections 05 1200, 05 2100, 05 3100, 05 5000, 05 5100, 05 5213, and 05 5315 - Structural Steel, Steel Joist Framing, Steel Decking, Metal Fabrications, Metal Stairs, Pipe & Tube Railings, and Metal Stairs and Ladders

This bid package includes all materials, labor and equipment as required for installation of all structural steel, steel joist framing, steel decking, metal fabrications, metal stairs, pipe & tube railings, and metal ladders. Structural steel trade contractor will coordinate their efforts with steel stud trade contractor and precast concrete trade contractor.

Lump Sum Bid. _____ dollars
(\$ _____)

Bid Package No. 17 – Sections 06 1000– Rough Carpentry

This bid package includes all materials, labor, and equipment for installation of all dimensional lumber as backing, wall caps and other as shown.

Lump Sum Bid. _____ dollars
(\$ _____)

Bid Package No. 18 – Sections 06 8205, 09 7200, 10 1101, 10 1400, 10 2113.19, 10 2123, 10 2601, 10 2800, 10 3100, 10 4400, 10 5100, 10 5617, 10 7500, and 11 5213 – FRP Panels, Tackable Wall Coverings, Visual Display Boards, Signage, Plastic Toilet Compartments, Cubicle Curtain, Wall and Corner Guards, Toilet Accessories, Manufactured Fireplaces, Fire Protection Specialties, Horizontal Display Shelf System, Lockers, Flagpoles, and Projection Screens

This bid package includes all materials, labor, and equipment to provide and install items in each section listed.

Lump Sum Bid. _____ dollars
(\$ _____)

Bid Package No. 19 – Sections 06 4100 – Architectural Wood Casework

This bid package includes all materials, labor, and equipment required to install all casework, millwork, laminate countertops, and solid material countertops and sills.

Lump Sum Bid. _____ dollars
(\$ _____)

Bid Package No. 20 – Sections 05 4000, 07 2100 (batt insulation), 07 8400, 07 9513 (pertaining to these sections), and 09 2116 – Cold-Formed Metal Framing, Insulation, Firestopping, Expansion Joint Cover Assemblies, and Gypsum Board Assemblies

This bid package includes all material, labor, and equipment required to install all cold-formed metal framing, metal stud installations, exterior wall sheathing, gypsum board installations, sound batt insulation, vapor barrier, and thermal batt insulation, firestopping, and expansion joint cover assemblies associated with these sections.

Lump Sum Bid. _____ dollars
(\$ _____)

Bid Package No. 21 – Sections 07 1400 - Fluid-Applied Waterproofing and 07 2510 – Fluid-Applied Membrane Air Barrier

This Bid Package includes all materials, labor, and equipment required for installation of fluid-applied waterproofing and fluid-applied membrane air barrier. This bid package does not include fluid applied membrane air barrier behind Exterior Insulation and Finish System.

Lump Sum Bid. _____ dollars
(\$ _____)

Bid Package No. 22 – Sections 07 2400 and 09 2513 – Exterior Insulation and Finish System and Exterior Soffit System

This bid package includes all materials, labor, and equipment required for installation of the exterior insulation and finish system and the exterior soffit system. This bid package also includes the EIFS manufacture approved Fluid-Applied Membrane Air Barrier behind the EIFS.

Lump Sum Bid. _____ dollars
(\$ _____)

Bid Package No. 23 – Sections 07 4213, 07 5400, 07 6200, 07 7200, and 07 9513 (as it pertains to metal wall panel and roof installations) – Metal Wall Panels, Thermoplastic Membrane Roofing, Sheet Metal Flashing and Trim, Roof Accessories, and Expansion Joints

This bid package includes all materials, labor, and equipment as required for installation of metal wall panels, a complete roof system, sheet metal flashing and trim, roof accessories, and expansion joint cover assemblies in the roof.

Lump Sum Bid. _____ dollars
(\$ _____)

Bid Package No. 24 – Section 07 9005 – Joint Sealers

This bid package includes all material, labor, and equipment for installations as shown for building construction only. Do not include joint sealers for concrete paving or sidewalks in this bid package.

Lump Sum Bid. _____ dollars
(\$ _____)

Bid Package No. 25 – Sections 08 1113, 08 1416, 08 3100, 08 7100 – Hollow Metal Frames, Flush Wood Doors, Access Doors & Panels, and Door Hardware.

This bid package includes all material, labor, and equipment for the installation of hollow metal frames, wood doors, access doors & panels, and door hardware. Door hardware cylinders to be furnished by Owner, installed by Construction Manager. Aluminum door and frame hardware to be furnished under Bid Package No. 25. Aluminum door and frame hardware to be installed under Bid Package No. 27.

Lump Sum Bid. _____ dollars
(\$ _____)

Bid Package No. 26 – Section 08 3313 – Coiling Counter Doors

This bid package includes all materials, labor, and equipment required for the installation of the coiling counter door.

Lump Sum Bid. _____ dollars
(\$ _____)

Bid Package No. 27 – Sections 08 4313, 08 4500, 08 4501, 08 5800, and 08 8000 – Aluminum-Framed Storefronts, Translucent Wall Assemblies, Display Case Doors, Aluminum Sliding Service Window, and Glazing

This bid package includes all materials, labor, and equipment required for installation of aluminum framed doors and storefronts, glass display case doors, aluminum sliding service windows, and glazing. Include glass and glazing for hollow metal framed doors and windows. Section 08 4500 – Translucent Wall Assemblies shall be an ‘ADD’ alternate to this Bid Package. Please Section 01 2300 – Alternates for more information concerning Alternate No. 1. Aluminum door and frame hardware to be furnished under Bid Package No. 25. Aluminum door and frame hardware to be installed under Bid Package No. 27.

Base Bid. _____ dollars
(\$ _____)

Add Alternate No. 1. _____ dollars
(\$ _____)

Bid Package No. 28 – Sections 09 0561 (as it pertains to Floor Tile) and 09 3000 – Common Work Results for Flooring Preparation and Tiling

This bid package includes all material, labor, and equipment for installation of all wall and floor tile and all transition strips associated with wall and floor tile.

Lump Sum Bid. _____ dollars
(\$ _____)

Bid Package No. 29 – Sections 09 5100 and 09 8401 – Acoustical Ceilings and Cementitious Wood Fiber Wall Panels

This bid package includes all materials, labor, and equipment for installation of all acoustical ceilings and acoustical panels.

Lump Sum Bid. _____ dollars
(\$ _____)

Bid Package No. 30 – Section 09 6466 - Wood Athletic Flooring

This bid package includes all materials, labor, and equipment required to install, paint and finish wood athletic flooring. Please see Section 01 2300 – Alternates for complete information on Alternate No. 9 in regards to refinishing the existing gymnasium wood athletic floor.

Lump Sum Bid. _____ dollars
(\$ _____)

Add Alternate No. 9. _____ dollars

(\$ _____)

Bid Package No. 31 – Sections 09 0561 (as it pertains to Resilient Flooring, Resilient Athletic Flooring, and Carpeting), 09 6500, 09 6566, 09 6800, and ~~32 1816.13~~ – Common Work Results for Flooring Preparation, Resilient Flooring, Resilient Athletic Flooring, Carpeting, and ~~Playground Protective Surfacing~~

This bid package includes all materials, labor, and equipment required for installation of common work results for flooring preparation, resilient flooring, resilient athletic flooring, carpeting, flooring accessories, and ~~playground protective surfacing~~. Section 09 0561 – Common Work Results for Flooring Preparation specifies an alternate adhesive for flooring material. The specified alternative adhesive for flooring material is not part of this Bid Package. Bidders providing a bid for this bid package shall provide a unit price for the alternate adhesive specified in Section 09 0561. Section 09 6005 – Water Vapor Emission Control System For Concrete Floors, which specifies a topical moisture mitigation system. The specified moisture mitigation system is not part of this Bid Package but Bidders providing a bid for this bid package shall provide a unit price for the moisture mitigation system specified in Section 09 6005.

Lump Sum Bid. _____ dollars
(\$ _____)

Unit Price for Section 09 0561. _____ dollars
(\$ _____)

Unit Price for Section 09 6005. _____ dollars
(\$ _____)

Bid Package No. 31.1 – Section 32 1816.13 – Playground Protective Surfacing

This bid package includes all materials, labor, and equipment required for installation of Playground Protective Surfacing.

Lump Sum Bid. _____ dollars
(\$ _____)

Bid Package No. 32 – Sections 09 0561 (as it pertains to Fluid-Applied Flooring) and 09 06700 – Common Work Results for Flooring Preparation and Fluid-Applied Flooring

This bid package includes all materials, labor, and equipment required for installation of common work results for flooring preparation, fluid-applied flooring, and all accessories. Section 09 0561 – Common Work Results for Flooring Preparation specifies an alternate adhesive for flooring material. The specified alternative adhesive for flooring material is not part of this Bid Package. Section 09 6005 – Water Vapor Emission Control System For Concrete Floors specifies a topical moisture mitigation system. The specified topical moisture mitigation system is not part of this Bid Package. Bidders providing a bid for this bid package shall provide a unit price for the moisture mitigation system specified in Section 09 6005.

Lump Sum Bid. _____ dollars
(\$ _____)

Unit Price for Section 09 6005. _____ dollars
(\$ _____)

Bid Package No. 33 – Section 09 9000 – Painting and Coating

This bid package includes all materials, labor, and equipment for wall paint and coating installations.

Lump Sum Bid. _____ dollars
(\$ _____)

Bid Package No. 34 – Section 11 4000 – Food Service Equipment

This bid package includes all materials, labor, and equipment required for installation of the food service equipment. This Bid Package includes seven 'ADD' alternates. Please see Section 01 2300 – Alternates for more information on Alternates No. 2 thru No. 8.

Base Bid. _____ dollars
(\$ _____)

Add Alternate No. 2. _____ dollars
(\$ _____)

Add Alternate No. 3. _____ dollars
(\$ _____)

Add Alternate No. 4. _____ dollars
(\$ _____)

Add Alternate No. 5. _____ dollars
(\$ _____)

Add Alternate No. 6. _____ dollars
(\$ _____)

Add Alternate No. 7. _____ dollars
(\$ _____)

Add Alternate No. 8. _____ dollars
(\$ _____)

Bid Package No. 35 – Section 11 6623 - Gymnasium Equipment

This bid package includes all materials, labor, and equipment for installation of specified athletic equipment ~~and for relocation of selected existing gymnasium equipment.~~
Structural support requirement information is to be provided as part of this bid package for steel roof joist supplier.

Lump Sum Bid. _____ dollars
(\$ _____)

Bid Package No. 36 – Section 12 2400 – Window Shades

This bid package includes all materials, labor, and equipment required to install all window shades.

Lump Sum Bid. _____ dollars
(\$ _____)

Bid Package No. 37 – Section 12 6613 - Telescoping Bleachers

This bid package includes all materials, labor, and equipment required for the installation of telescoping bleachers and for the relocation of selected existing bleachers.

Lump Sum Bid. _____ dollars
(\$ _____)

Bid Package No. 38 – Section 14 2010 – Passenger Elevators

This bid package includes all materials, labor, and equipment required for the installation of passenger elevators.

Lump Sum Bid. _____ dollars
(\$ _____)

Bid Package No. 39 – Sections 21 0500 and 21 1300 – Common Work Results for Fire Suppression and Fire Suppression Sprinkler Systems

This bid package includes all materials, labor and equipment as required for the installation of the fire sprinkler system in the existing school and in the new addition.

Lump Sum Bid. _____ dollars
(\$ _____)

Bid Package No. 40 – Divisions 22 & 23 including Specification Sections – 22 0050, 22 0501, 22 0502, 22 0513, 22 0548, 22 0553, 22 0719, 22 1005, 22 1006, 22 3000, 22 4000, 23 0050, 23 0501, 23 0502, 23 0513, 23 0514, 23 0519, 23 0553, 23 0593, 23 0713, 23 0716, 23 0913, 23 0923, 23 0993, 23 2113, 23 2114, 23 2123, 23 2300, 23 2500, 23 3100, 23 3300, 23 3413, 23 3423, 23 3600, 23 3700, 23 3813, 23 5100, 23 5216, 23 6423, 23 7223, 23 7313 and 23 8101 - PLUMBING and HVAC

This bid package includes all materials, labor, and equipment as required for plumbing including testing and inspections as outlined. This bid package includes all materials, labor, and equipment required for installation of full HVAC systems including testing, balancing and other as outlined.

Lump Sum Bid. _____ dollars
(\$ _____)

Bid Package No. 41 – Divisions 26, 27, 28 including Specification Sections 26 0101, 26 0501, 26 0519, 26 0526, 26 0529, 26 0534, 26 0536, 26 0537, 26 0553, 26 2200, 26 2413, 26 2416, 26 2717, 26 2726, 26 2817, 26 2818, 26 2913, 26 3213, 26 3600, 26 5100, 26 5600, 27 1005, 27 5117, 27 5124, 27 5132, and 28 3100

This bid package includes all materials, labor, and equipment required for all electrical including specialty systems. Include permits, testing and other as required or outlined.

Lump Sum Bid. _____ dollars
(\$ _____)

Bid Package No. 42 – Section 32 3120 – Vinyl Fence

This bid package includes all materials, labor, and equipment as required for the installation of the vinyl fencing.

Lump Sum Bid. _____ dollars
(\$ _____)

Bid Package No. 43 – Section 33 9200 – Seeding

This bid package includes all materials, labor, and equipment required to provide seeding, mulch and other as specified to establish healthy stand of grass.

Lump Sum Bid. _____ dollars
(\$ _____)

Voluntary Alternate No. 1

This Voluntary Alternate applies to the following Bid Package: _____

This Voluntary Alternate is described as follows: _____

Voluntary Alternate No. 1 (add / delete), _____ dollars
(\$ _____)

Voluntary Alternate No. 2

This Voluntary Alternate applies to the following Bid Package: _____

This Voluntary Alternate is described as follows: _____

Voluntary Alternate No. 2 (add / delete), _____ dollars
(\$ _____)

Schedule of Work:

Installations shall be in accordance with the project schedule developed by Construction Manager.

Acceptance:

This bid will remain open to acceptance for thirty days from the bid closing date.

If this bid is accepted by the owner within the time period stated above, we will:

- Execute the agreement within five days of notice of award.
- Furnish required bonds within five days of notice of award.
- Commence work within five days of notice to proceed.

If, within thirty days, this bid is accepted and we fail to begin work or provide the required bonds, the security deposit shall be forfeited to owner by reason of our failure.

If our bid is not accepted within the time stated above, the security deposit shall be returned to the undersigned.

Changes to the work:

Changes to work must be approved prior to commencing with work associated with said change. No change orders will be considered "after the fact". Additional costs for changes in work will be based on net cost plus 10 percent for overhead and profit.

Work deleted from contract must be approved prior to commencing with work associated with said deletion. No deletions will be considered "after the fact". Credit to owner for deletions will be based on net cost plus 10 percent for overhead and profit.

Addenda:

We acknowledge receipt of addendums _____ through _____.

Bid Form Signature(s) (fill out only the portion applicable to your organization).

Individual

Name (typed/printed) _____

By: _____
(Signature)

Doing Business As: _____

Business Address _____

Phone # _____ Fax # _____

E-mail: _____

Partnership

Partnership Name: _____

By: _____
(Signature of general partner – attach evidence of authority to sign)

Name: (typed or printed) _____

Business Address _____

Phone # _____ Fax # _____

E-mail: _____

Corporation

Corporation Name: _____

State of Incorporation _____

Type (General Business, Professional Service, Limited Liability) _____

By: _____
(Signature)

Name: (Type or Print) _____

Title: _____

Attest: _____

Business Address _____

Phone # _____ Fax # _____

E-mail: _____

Corporate Seal

END OF BID FORM

**SECTION 012300
ALTERNATES**

PART 1 GENERAL

1.01 SECTION INCLUDES

- A. Description of alternates.
- B. Procedures for pricing alternates.

1.02 ACCEPTANCE OF ALTERNATES

- A. Alternates quoted on Bid Forms will be reviewed and accepted or rejected at Owner's option. Accepted alternates will be identified in the Owner-Contractor Agreement.
- B. Coordinate related work and modify surrounding work to integrate the Work of each alternate.

1.03 SCHEDULE OF ALTERNATES

- A. Alternate No. 1 - Translucent Wall Assemblies in east exterior wall of M.S. Gymnasium C109 / CRF Gymnasium D105: The Contractor shall state the amount to add to the Base Bid to perform the following changes:
 - 1. Add translucent wall assemblies in the east exterior wall of M.S. Gymnasium C109 / CRF Gymnasium D105. See Section 084500 - Translucent Wall Assemblies and drawings.
- B. Alternate No. 2 - F.S.E. Items #65, #66, #67, #68, #69, #70, #71, #72, #73, #74, #75, #76, #77, #78, #79, #80, #81, #82, #83, #84, #85, #86, #87, #88, #89, #90, #91, #92, #93, #94, #95, #96, #97, #98, #99, #100, #101, #102, #103, and #104: The Contractor shall state the amount to add to the Base Bid to perform the following changes:
 - 1. Add F.S.E. Items #65, #66, #67, #68, #69, #70, #71, #72, #73, #74, #75, #76, #77, #78, #79, #80, #81, #82, #83, #84, #85, #86, #87, #88, #89, #90, #91, #92, #93, #94, #95, #96, #97, #98, #99, #100, #101, #102, #103, and #104 (listed as Alternate No. FS-1 on Sheet FS1.1) including the labor to install these F.S.E. items. The installation of all mechanical and electrical service connections per Mechanical and Electrical Drawings and Divisions 22 and 26 required for these Food Service Equipment items shall be included in the base bid.
- C. Alternate No. 3 - F.S.E. Item #105 - Water Treatment System and F.S.E. Item #106 - Combination Oven / Steamer: The Contractor shall state the amount to add to the Base Bid to perform the following changes:
 - 1. Add F.S.E. Item #105 - Water Treatment System and F.S.E. Item #106 - Combination Oven / Steamer (listed as Alternate No. FS-2 on Sheet FS1.1) including the labor to install these F.S.E. items. The installation of all mechanical and electrical service connections per Mechanical and Electrical Drawings and Divisions 22 and 26 required for these Food Service Equipment items shall be included in the base bid.
- D. Alternate No. 4 - F.S.E. Item #107 - Insulated Transport Cabinet: The Contractor shall state the amount to add to the Base Bid to perform the following changes:
 - 1. Add F.S.E. #107 - Insulated Transport Cabinets (listed as Alternate No. FS-3 on Sheet FS1.1) including the labor to install this F.S.E. item. The installation of all mechanical and electrical service connections per Mechanical and Electrical Drawings and Divisions 22 and 26 required for these Food Service Equipment items shall be included in the base bid.
- E. Alternate No. 5 - F.S.E. Item #108 - Food Processor and F.S.E. Item #109 - Bench Scale with Stand: The Contractor shall state the amount to add to the Base Bid to perform the following changes:
 - 1. Add F.S.E. Item #108 - Food Processor and F.S.E. Item #109 - Bench Scale with Stand (listed as Alternate No. FS-4 on Sheet FS1.1) including the labor to install these F.S.E. items. The installation of all mechanical and electrical service connections per Mechanical and Electrical Drawings and Divisions 22 and 26 required for these Food Service Equipment items shall be included in the base bid.

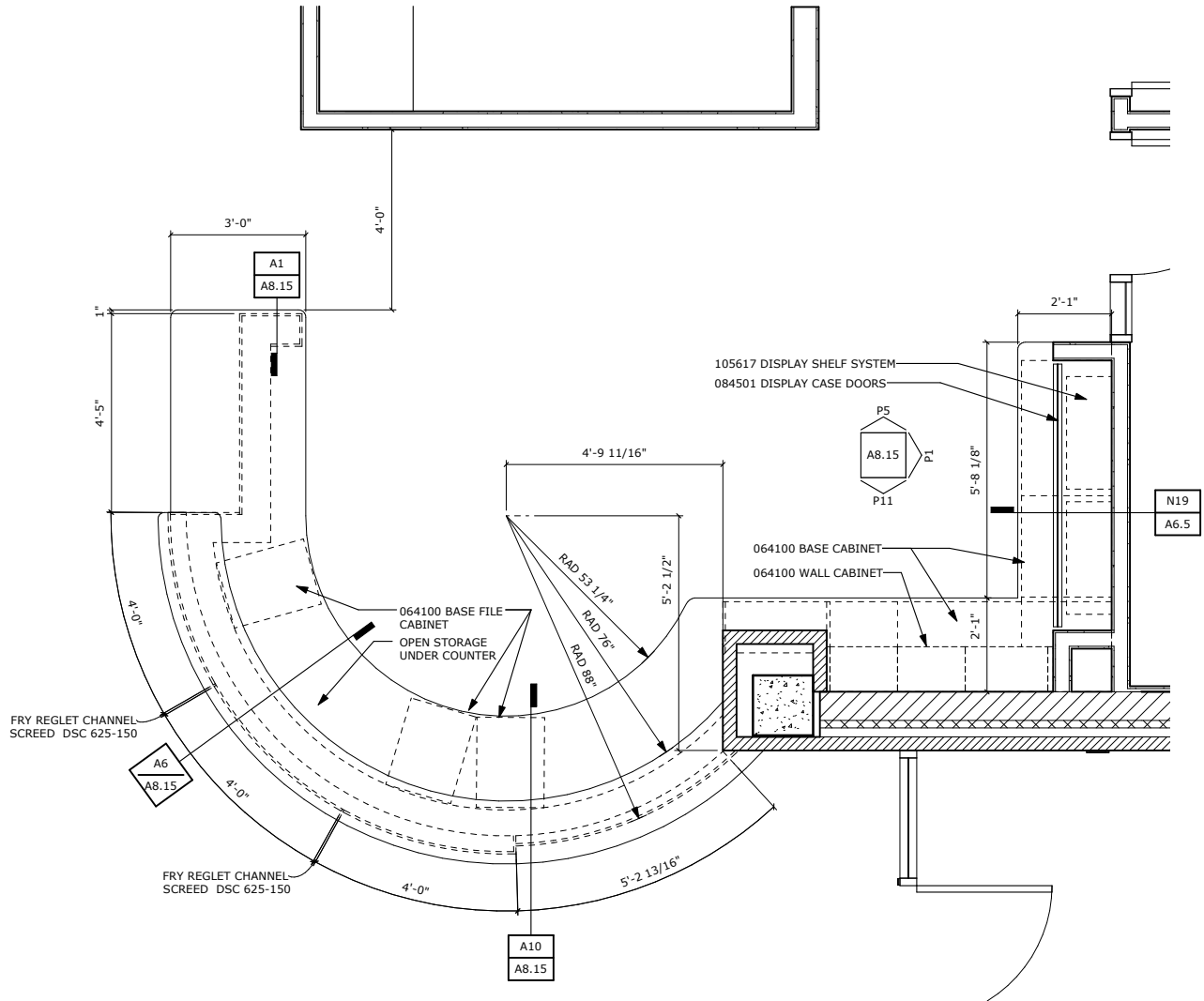
- F. Alternate No. 6 - F.S.E. Item #110 - Water Filter Assembly and F.S.E. Item #111 - Ice Maker: The Contractor shall state the amount to add to the Base Bid to perform the following changes:
1. Add F.S.E. Item #110 - Water Filter Assembly and F.S.E. Item #111 - Ice Maker (listed as Alternate No. FS-5 on Sheet FS1.1) including the labor to install these F.S.E. items. The installation of all mechanical and electrical service connections per Mechanical and Electrical Drawings and Divisions 22 and 26 required for these Food Service Equipment items shall be included in the base bid.
- G. Alternate No. 7 - F.S.E. Item #112 - Double Convection Oven: The Contractor shall state the amount to add to the Base Bid to perform the following changes:
1. Add F.S.E. Item #112 - Double Convection Oven (listed as Alternate No. FS-6 on Sheet FS1.1) including the labor to install this F.S.E. item. The installation of all mechanical and electrical service connections per Mechanical and Electrical Drawings and Divisions 22 and 26 required for these Food Service Equipment items shall be included in the base bid.
- H. Alternate No. 8 - F.S.E. Item #113 - Tilting Kettle / 60 gallon: The Contractor shall state the amount to add to the Base Bid to perform the following changes:
1. Add F.S.E. Item #113 - Tilting Kettle / 60 gallon (listed as Alternate No. FS-7 on Sheet FS1.1) including the labor to install this F.S.E. item. The installation of all mechanical and electrical service connections per Mechanical and Electrical Drawings and Divisions 22 and 26 required for these Food Service Equipment items shall be included in the base bid.
- J. Alternate No. 9 – Section 096466 Wood Athletic Flooring: The Contractor shall state the amount to add to the Base Bid to perform the following:
1. Strip the Existing Gymnasium 186A Wood Athletic Floor finish and game lines, remove the existing vented cove base, sand and buff the wood flooring to virgin wood material. Refinish with sealer, gameline paint, and finish coats and provide new vented cove base. See Section 096466 for finishing requirements. Gamelines shall match the existing gamelines as shown on the drawings with colors to match the new Gymnasium gamelines.

END OF SECTION



LEXINGTON MIDDLE SCHOOL AND COMMUNITY RECREATION FACILITY ADDITION ADDENDUM #3

PROJECT: #L12022
SHEET: A8.15



A15 ENLARGED PLAN - CRF ADMIN DESK
1/2" = 1'-0"



DATE ISSUED March, 22nd 2013

ADDENDUM # 3

ENGINEER Engineering Technologies, Inc.
825 M Street, Suite 200
Lincoln, NE 68508

PROJECT Lexington Middle School & CRF Addition

ETI PROJECT # 2011-140

The Architect issues this Addendum to all known bidders before receipt of proposals. Bidder shall acknowledge the receipt of this addendum on their proposal sheet and all information contained herein shall become a part of the contract documents.

ADDENDUM:

PRIOR APPROVAL – MECHANICAL

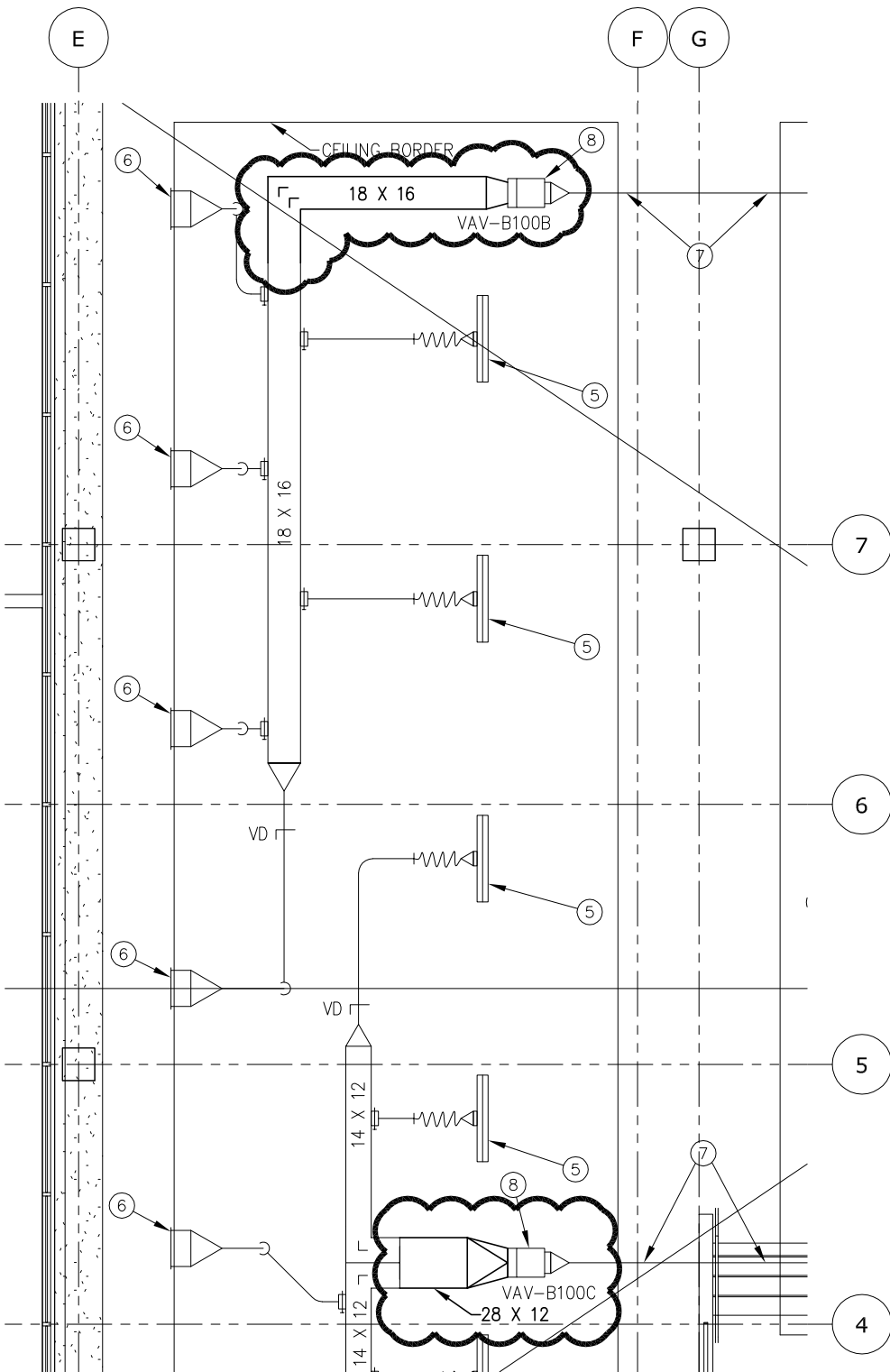
- 1. The following manufacturers have received prior approval for bidding purposes subject to shop drawing review:
A. List Equipment Here
Domestic Water Heaters
Plumbing Fixtures
Electronic Mixing Valve
Plumbing Fixture Drains
Spiral Ductwork
Autoflow Balancing Valves
List Manufacturer Here
Laars/Bradford White
Zurn
Lawlers Duplex Sea Valve
JR Smith
La Pine Metal Products
Danfoss

SPECIFICATIONS – MECHANICAL

- 1. Section 23 2113 –Hydronic Piping
Replace 2.03B with the following to allow Schedule 40 black steel hydronic piping for grooved fittings on heating water piping.
B. Steel Pipe Sizes 2-1/2 inch and Over: ASTM A 53/A 53M, Schedule 40, black, using one of the following joints types:
1. Welded Joints: ASTM A234/A234M, wrought steel welding type fittings; AWS D1.1 welded.
2. Grooved Joints: AWWA C606 grooved pipe, fittings of same material, and mechanical couplings.
3. Joints: Welded in accordance with AWS D1.1.
2. Section 23 2113 Hydronic Piping
Replace 2.04B with the following to allow Schedule 40 black steel hydronic piping for grooved fittings on chilled water piping.
B. Steel Pipe Sizes 2-1/2 inch and Over: ASTM A 53/A 53M, Schedule 40, black, using one of the following joints types:
1. Welded Joints: ASTM A234/A234M, wrought steel welding type fittings; AWS D1.1 welded.
2. Grooved Joints: AWWA C606 grooved pipe, fittings of same material, and mechanical couplings.
3. Joints: Welded in accordance with AWS D1.1

DRAWINGS – MECHANICAL

- 1. Sheet M1.1D First Floor Plan – Area D - Plumbing
A. Increase Service Sink (SS-1) drain in Custodial 121 from 2” to 3” to handle elevator sump pump discharge.
B. Remove sheet note #13 in its entirety referring to extending the elevator sump pump remote alarm indicator into custodial D106 and mount on wall.
2. Sheet M3.2B Second Floor Plan – Area B - HVAC
A. See sheet M3.2B-1 for changes to the HVAC plan.
B. See sheet M3.2B-2 for changes to the HVAC plan.
C. See sheet M3.2B-3 for changes to the HVAC plan.
3. Sheet M5.2 Mechanical Details
A. Elevator Sump Pump Detail: change sump pit basin size from 16” diameter to 24” diameter. Change sump pit basin size from 24” depth to 36” depth.

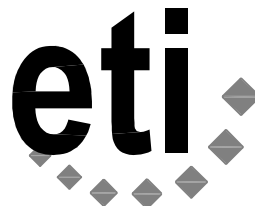


LEXINGTON MIDDLE
SCHOOL AND CRF
SECOND FLOOR 'B' HVAC



SCALE: 1/8" = 1'-0"

ADDENDUM # 3



Engineering Technologies Inc.
Mechanical & Electrical Building Solutions

825 M Street, Suite 200 | Lincoln, NE 68508
P 402.476.1273 | F 402.476.1274

4559 South 133rd Street | Omaha, NE 68137
P 402.330.2772 | F 402.330.2630

ETI Project No: 2011-140

3/22/13

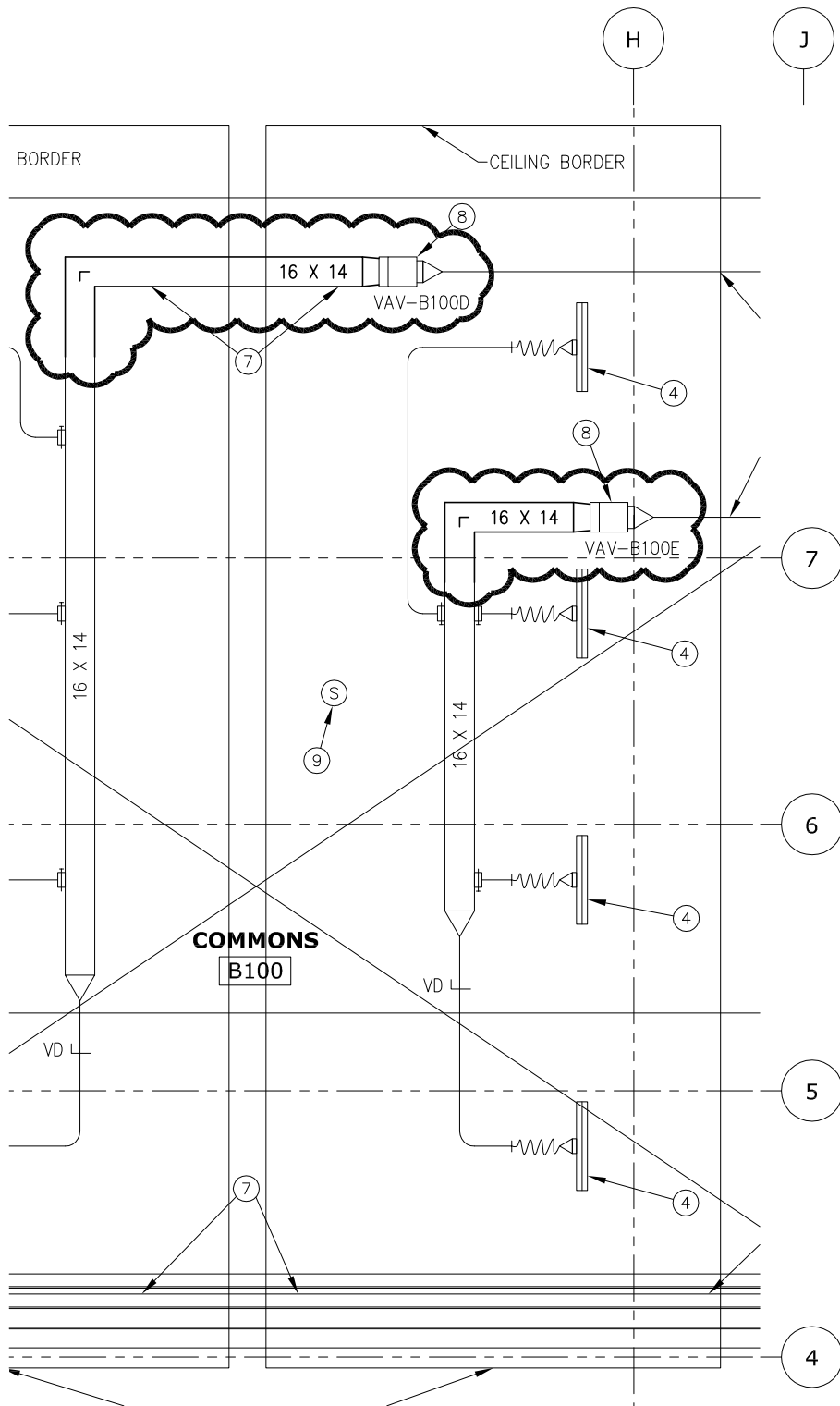
SHEET

M3.2B

ATTACHMENT NO.

1

DRK

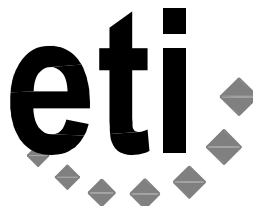


LEXINGTON MIDDLE
SCHOOL AND CRF
SECOND FLOOR 'B' HVAC



SCALE: 1/8" = 1'-0"

ADDENDUM # 3



Engineering Technologies Inc.
Mechanical & Electrical Building Solutions

825 M Street, Suite 200 | Lincoln, NE 68508
P 402.476.1273 | F 402.476.1274

4559 South 133rd Street | Omaha, NE 68137
P 402.330.2772 | F 402.330.2630

ETI Project No: 2011-140

3/22/13

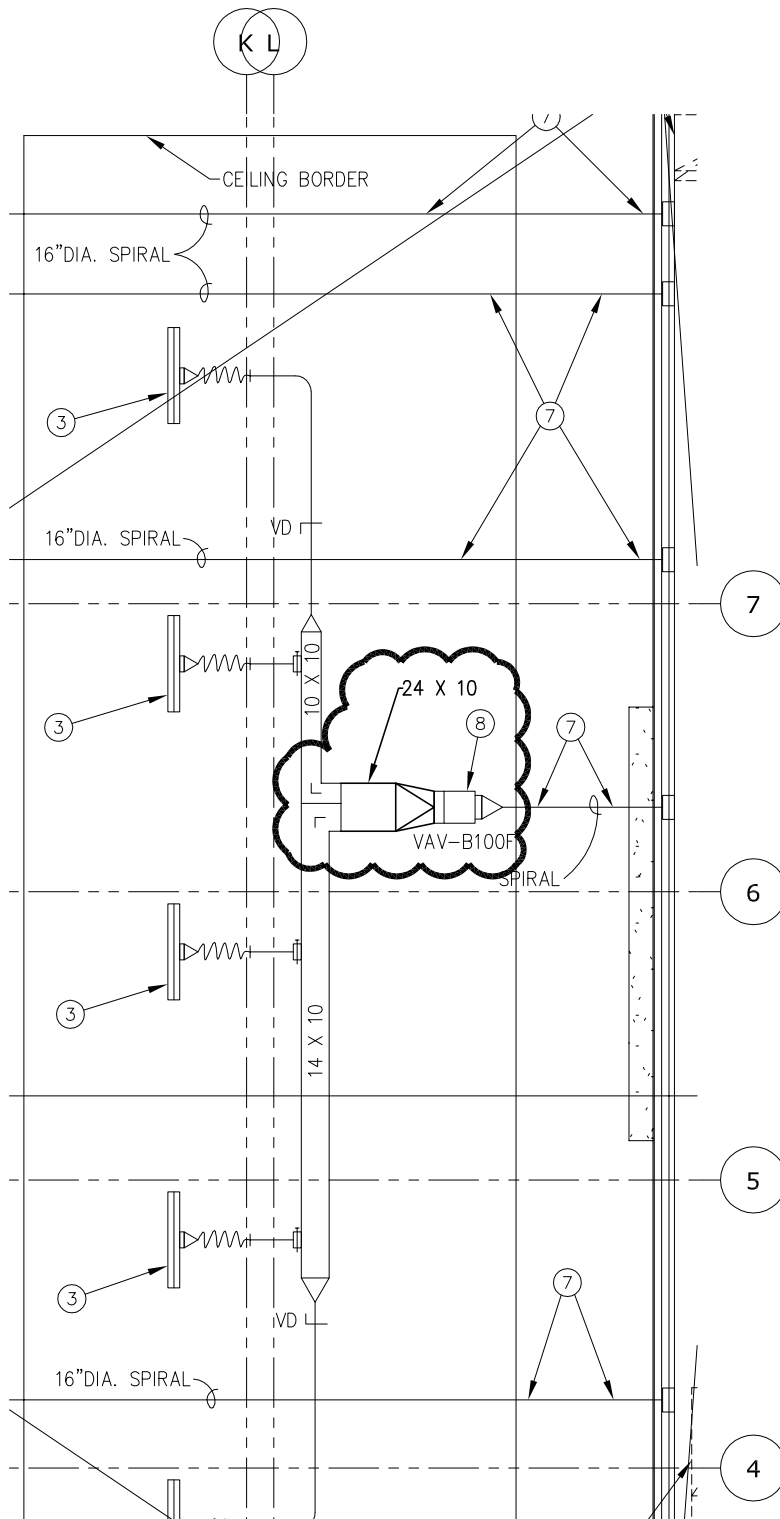
SHEET

M3.2B

ATTACHMENT NO.

2

DRK

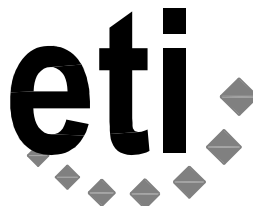


LEXINGTON MIDDLE
 SCHOOL AND CRF
 SECOND FLOOR 'B' HVAC



SCALE: 1/8" = 1'-0"

ADDENDUM # 3



Engineering Technologies Inc.
 Mechanical & Electrical Building Solutions

825 M Street, Suite 200 | Lincoln, NE 68508
 P 402.476.1273 | F 402.476.1274

4559 South 133rd Street | Omaha, NE 68137
 P 402.330.2772 | F 402.330.2630

ETI Project No: 2011-140

3/22/13

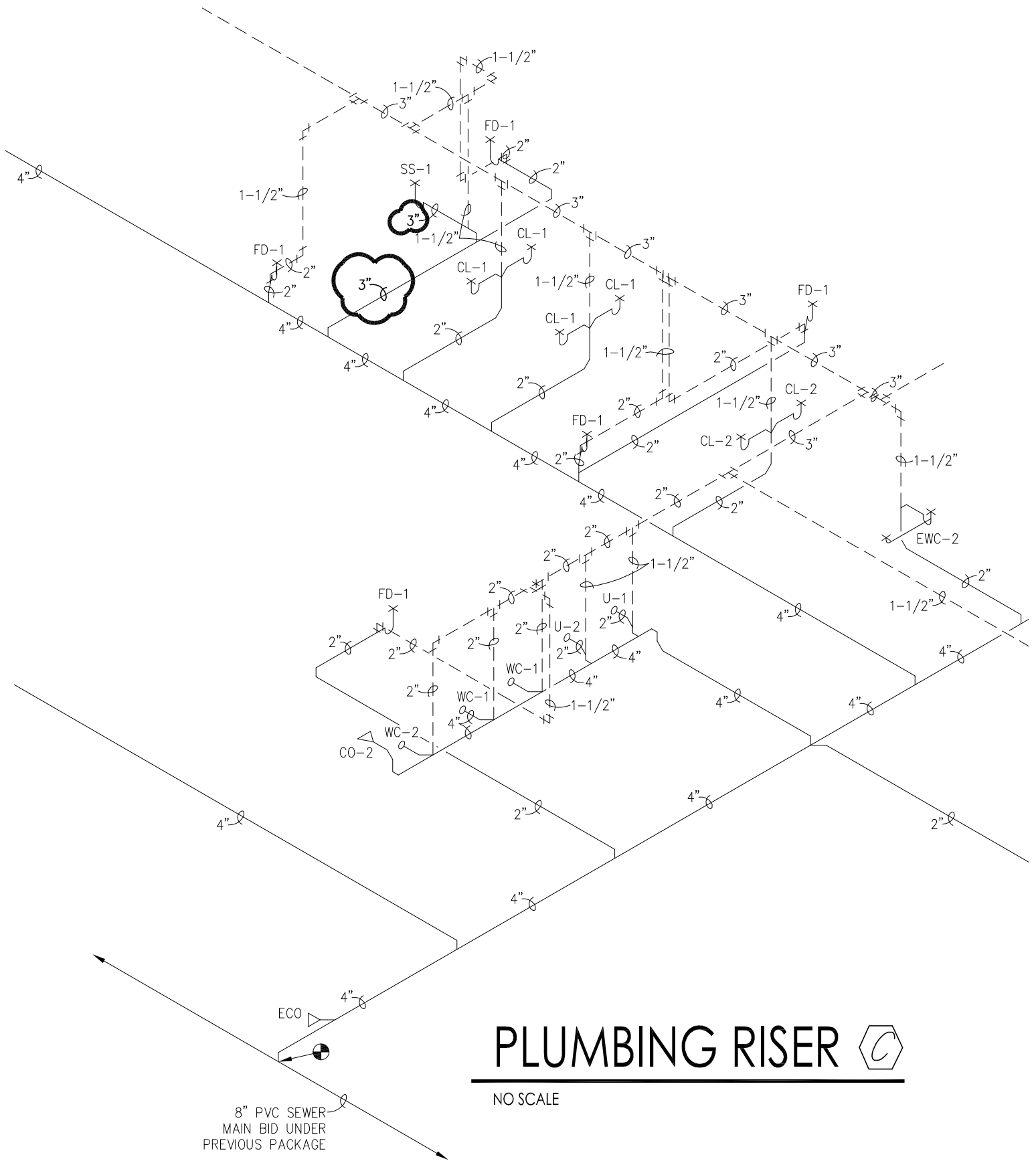
SHEET

M3.2B

ATTACHMENT NO.

3

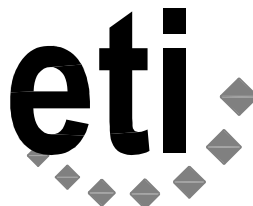
DRK



PLUMBING RISER

NO SCALE

LEXINGTON MIDDLE
SCHOOL AND CRF
PLUMBING RISERS



Engineering Technologies Inc.
Mechanical & Electrical Building Solutions
825 M Street, Suite 200 | Lincoln, NE 68508
P 402.476.1273 | F 402.476.1274
4559 South 133rd Street | Omaha, NE 68137
P 402.330.2772 | F 402.330.2630
ETI Project No: 2011-140

3/22/13

SHEET
M5.4

ATTACHMENT NO.

1

DRK

NO SCALE

ADDENDUM # 3