

ADDENDUM #3

NORTH PLATTE COMMUNITY COLLEGE SOUTH CAMPUS CAFETERIA ADDITION NORTH PLATTE, NEBRASKA 1001

Wilkins Hinrichs Stober Architects, L.L.C.
2908 West 39th Street, Suite A
Kearney, Nebraska 68845
308-237-5787

Date Issued: March 21, 2013

Bid Date: March 25, 2013

TO ALL BID DOCUMENT HOLDERS OF RECORD:

Acknowledge receipt of this addendum by inserting its number in the space provided on the BID FORM. Failure to do so may subject Bidder to disqualification. This Addendum forms a part of the BIDDING DOCUMENTS and modifies them as follows.

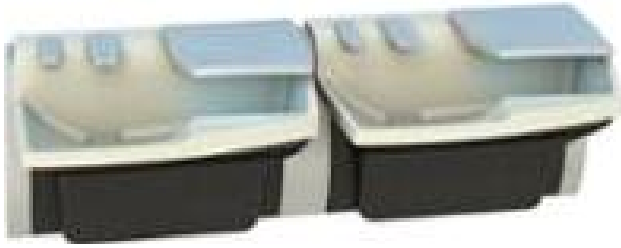
- Addendum #3 - #1** **SPECIFICATION SECTION 07 5323 – ETHYLENE-PROPYLENE-DIENE-MONOMER (EPDM) ROOFING**
Paragraph 2.01.1: Subject to compliance with all specifications and drawings, add the following acceptable manufacturer: “b. Carlisle SynTec: www.carlisesyntec.com”
- Addendum #3 - #2** **SPECIFICATION SECTION 22 4000 – PLUMBING FIXTURES**
Replace the L-1 specification page with the attached new L-1 specification.
- Addendum #3 - #3** **SHEET A1.0 – FLOOR PLAN**
1/A1.0 FLOOR PLAN – FIRST FLOOR: At WOMEN’S TOILET ROOM 24 and MEN’S TOILET ROOM 25 delete the solid surface countertop and lavatory(ies), the soap dispenser(s), and the hand dryers and substitute the Advocate AV-60 wash fountain by Bradley. The wash fountains are specified in the plumbing specifications and are to be provided and installed by the plumbing contractor.
- Addendum #3 - #4** **SHEET A2.0 – ENLARGED PLAN**
1/A2.0 ENLARGED PLAN: At WOMEN’S TOILET ROOM 24 and MEN’S TOILET ROOM 25 delete the solid surface countertop and lavatory(ies), the soap dispenser(s), and the hand dryers and substitute the Advocate AV-60 wash fountain by Bradley. The wash fountains are specified in the plumbing specifications and are to be provided and installed by the plumbing contractor.
- Addendum #3 - #5** **SHEET A9.0 ROOM FINISH SCHEDULE**
MATERIALS LIST: Delete “LT-4” in its entirety.
MATERIALS LIST: Delete “SS-1” and “SS-2”.
- Addendum #3 - #6** **SHEET A9.0 ROOM FINISH SCHEDULE**
MATERIALS LIST: Change LT-1 to read “7521-LAPIS” in lieu of “7508-PYRITE”.
Delete LT-4 in its entirety.
- Addendum #3 - #7** **SHEET A9.0 ROOM FINISH SCHEDULE**
ROOM FINISH SCHEDULE: At CUSTODIAL ROOM 27, add “SV” to BASE.
- Addendum #3 - #8** **SHEET A9.0 ROOM FINISH SCHEDULE**
ROOM FINISH SCHEDULE: At CORRIDOR 22, add “VB-1” to BASE.

- Addendum #3 - #9 SHEET A9.0 ROOM FINISH SCHEDULE**
Detail 1/A9.0, CABINET SECTION, change to read "ACCENT LAMINATE STRIP (PL-2)" in lieu of "ACCENT LAMINATE STRIP (PL-3)".
- Addendum #3 - #10 SHEET A9.0 – ROOM FINISH SCHEDULE**
Delete detail 3/A9.0 COUNTERTOP SECTION in its entirety.
- Addendum #3 - #11 SHEET A9.1 – INTERIOR ELEVATIONS**
2/A9.1 MEN'S TOILET ROOM T25 – EAST INTERIOR ELEVATION : Delete the solid surface countertop and lavatory, the soap dispenser(s), and the hand dryer and substitute the Advocate AV-60 wash fountain by Bradley. The wash fountains are specified in the plumbing specifications and are to be provided and installed by the plumbing contractor.

8/A9.1 WOMEN'S TOILET ROOM T24 – WEST INTERIOR ELEVATION : Delete the solid surface countertop and lavatory, the soap dispenser(s), and the hand dryer and substitute the Advocate AV-60 wash fountain by Bradley. The wash fountains are specified in the plumbing specifications and are to be provided and installed by the plumbing contractor.
- Addendum #3 - #12 SHEET P4.1 – PARTIAL PLUMBING PLAN – FIRST FLOOR**
See attached supplemental drawing P-SK-3 for revised piping and L-1 fixture location.
- Addendum #3 - #13 SHEET P4.1 – PARTIAL PLUMBING PLAN – FIRST FLOOR**
See attached supplemental drawing P-SK-4 for revised water service piping layout.
- Addendum #3 - #14 SHEET P5.1 – PLUMBING DETAILS AND SCHEDULES**
See attached supplemental drawing P-SK-5 for revised water service entry detail.
- Addendum #3 - #15 SHEET P9.1 – PLUMBING RISER DIAGRAMS**
See attached supplemental drawing P-SK-6 for revised piping riser diagram.
- Addendum #3 - #16 SHEET EP1.1 – POWER PLAN – FIRST FLOOR**
See attached supplemental drawing E-SK-1 for revised layout.

GENERALS

Wayne Dowhower Construction	308-532-9388	308-532-9389
Sampson Construction	308-865-1375	308-865-1381
Steele's Roofing & Construction	308-532-0575	308-534-6268



LAVATORY: L-1

(INSTALL PER A.D.A. REQUIREMENTS)

FIXTURE

SOLID SURFACE TERREON, WALL MOUNTED DUAL LAVATORY SYSTEM WITH ALL-IN-ONE SOAP, WATER AND HAND DRYER HANDWASHING STATION. TRAP COVER ENCLOSURE CONCEALS PLUMBING AND ELECTRICAL CONNECTIONS. 18 GAUGE, 300 SERIES STAINLESS STEEL END PANELS. MOUNTING FRAME TO BE COMPOSED OF 18 GAUGE STAINLESS STEEL WITH 12 GAUGE BASIN SUPPORTS.

FAUCET SENSOR USES A COLLIMATED INFRARED TRANSMITTING BEAM TO DETECT HANDS WITH 4" ACTIVATION RANGE, TIMING TURN-OFF DELAY OF 2-3 SECONDS WITH 0.38 GPM FLOW. LOW VOLTAGE TRANSFORMER IS A CLASS II, UL/CSA-LISTED 120/24 VAC, 50/60 Hz PLUG-IN.

TRANSFORMER POWERS THE 3/8" NPT SOLENOID VALVE.

ELECTRONIC SOAP DISPENSER WITH 64 OUNCE TOP-FILLED TAMPER RESISTANT FLIP-TOP COVER. SOAP DISPENSER USES A COLLIMATED INFRARED TRANSMITTING BEAM WITH 2" ACTIVATION RANGE.

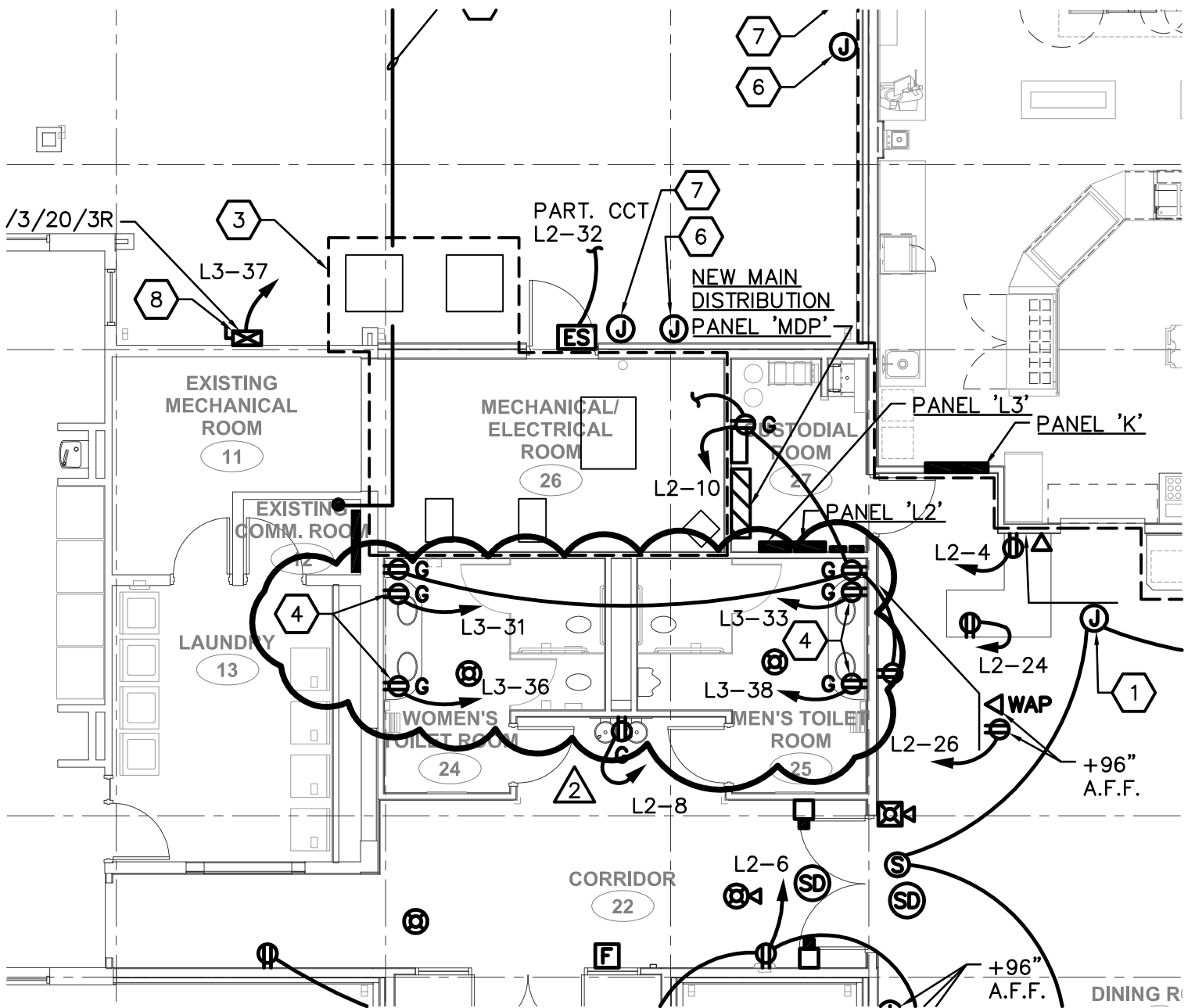
INFRARED-ACTIVATED, UL LISTED ENERGY EFFICIENT HAND DRYER THAT CAN BE ENTERED FROM THE SIDE IMMEDIATELY AFTER WASHING HANDS, ELIMINATING EXCESS WATER ON THE FLOOR. DUAL-SIDED DRYER FEATURES WHITE LEDs TO ILLUMINATE DRYER CAVITY WHILE IN STAND-BY MODE AND AMBER LEDs WHILE DRYER IS ACTIVE. SENSOR USES COLLIMATED INFRARED TRANSMITTING BEAM WITH 4" ACTIVATION RANGE. DUAL-SIDED DRYER UTILIZES 1600 WATTS (13.7 AMPS), 80 dB AND 70 CFM. DRYER NOZZLES CONTAIN ANTIMICROBIAL PROTECTION THAT INHIBITS GROWTH OF MICROORGANISMS. DRYER MOTOR IS LOCATED INSIDE THE CABINET OF LAVATORY STATION WITH A 3' POWER CORD WHICH PLUGS INTO A STANDARD 20-AMP, 120 VOLT GFCI OUTLET. DRYER HAS AN ON/OFF DISCONNECT SWITCH.

BRADLEY "ADVOCATE" AV60-2A-3-1-HD1-D-PD.

COLOR BY ARCHITECT.

THERMOSTATIC MIXING VALVE ASSEMBLY (TMA) COMPLETE WITH STOPS, STRAINERS, CHECK VALVES AND FLEXIBLE STAINLESS STEEL SUPPLY HOSES. STOP VALVES ARE 1/2" NPT FEMALE.

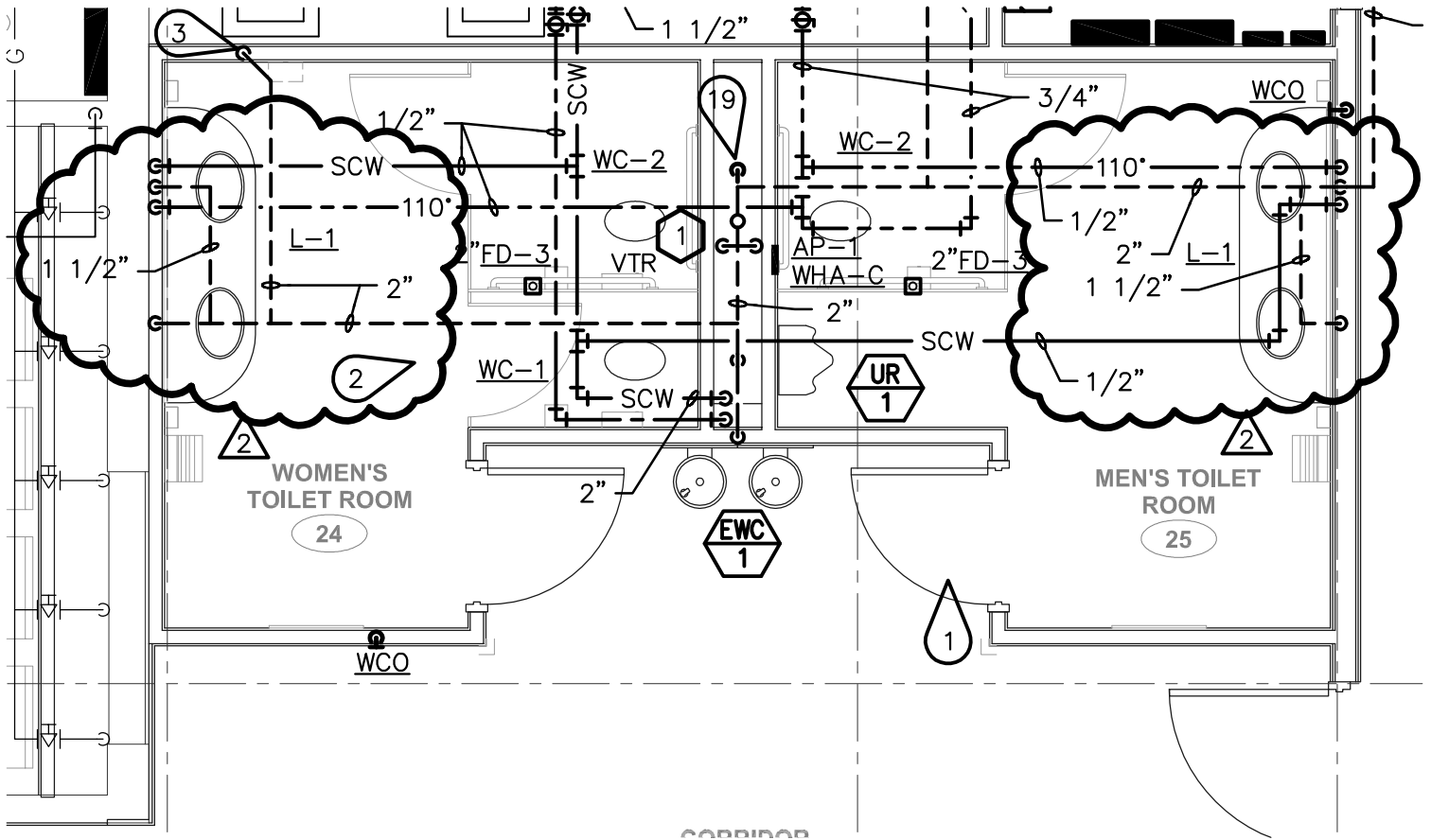
DRAIN SPUD AND LOCKNUT.



ELECTRICAL KEYNOTES: (Hexagon)

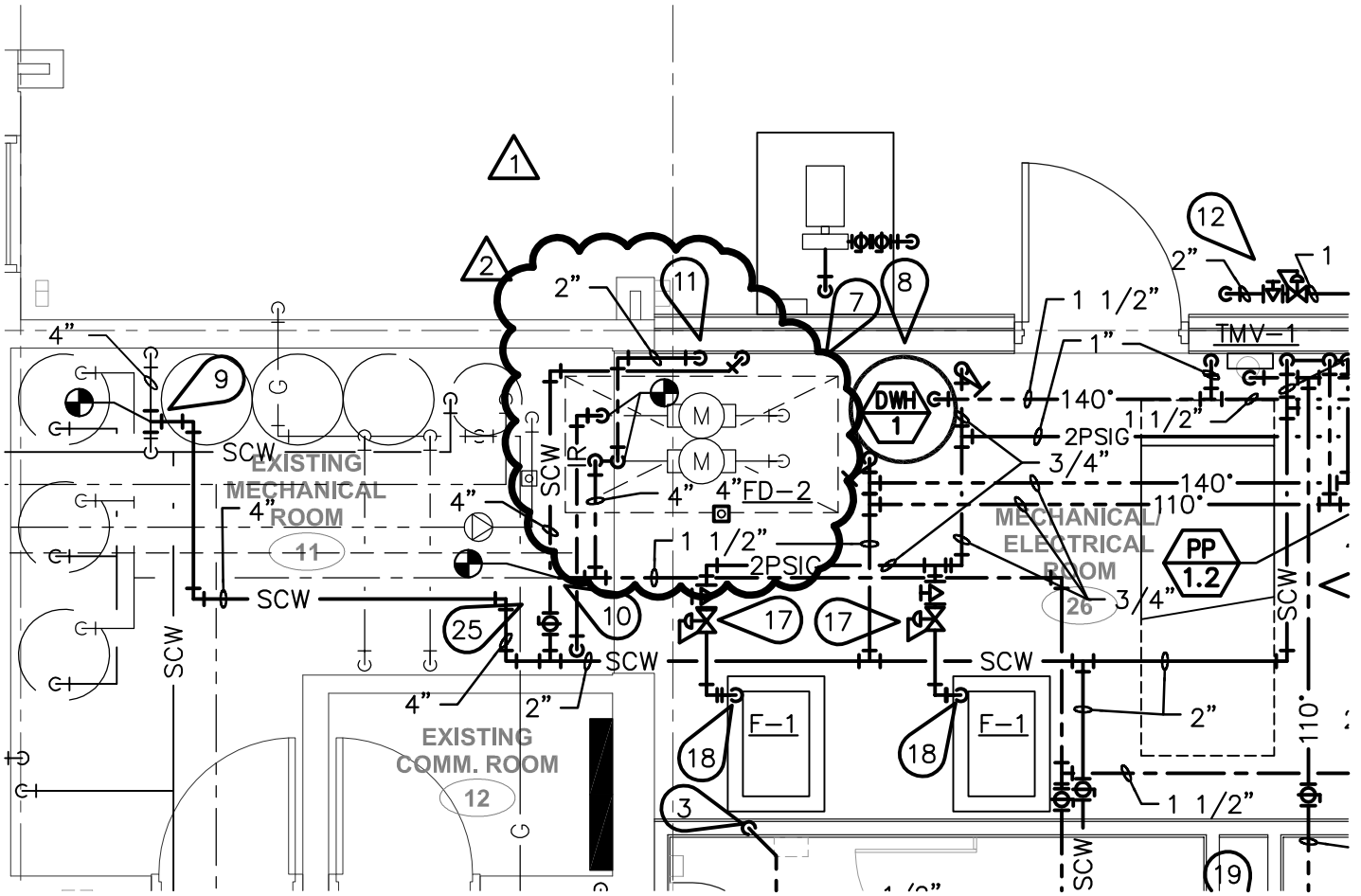
(4) COORDINATE LOCATION OF RECEPTACLES WITH MANUFACTURER'S SPECIFICATIONS PRIOR TO ROUGH-IN.

POWER PLAN - FIRST FLOOR
 SCALE: 1/8" = 1'-0"








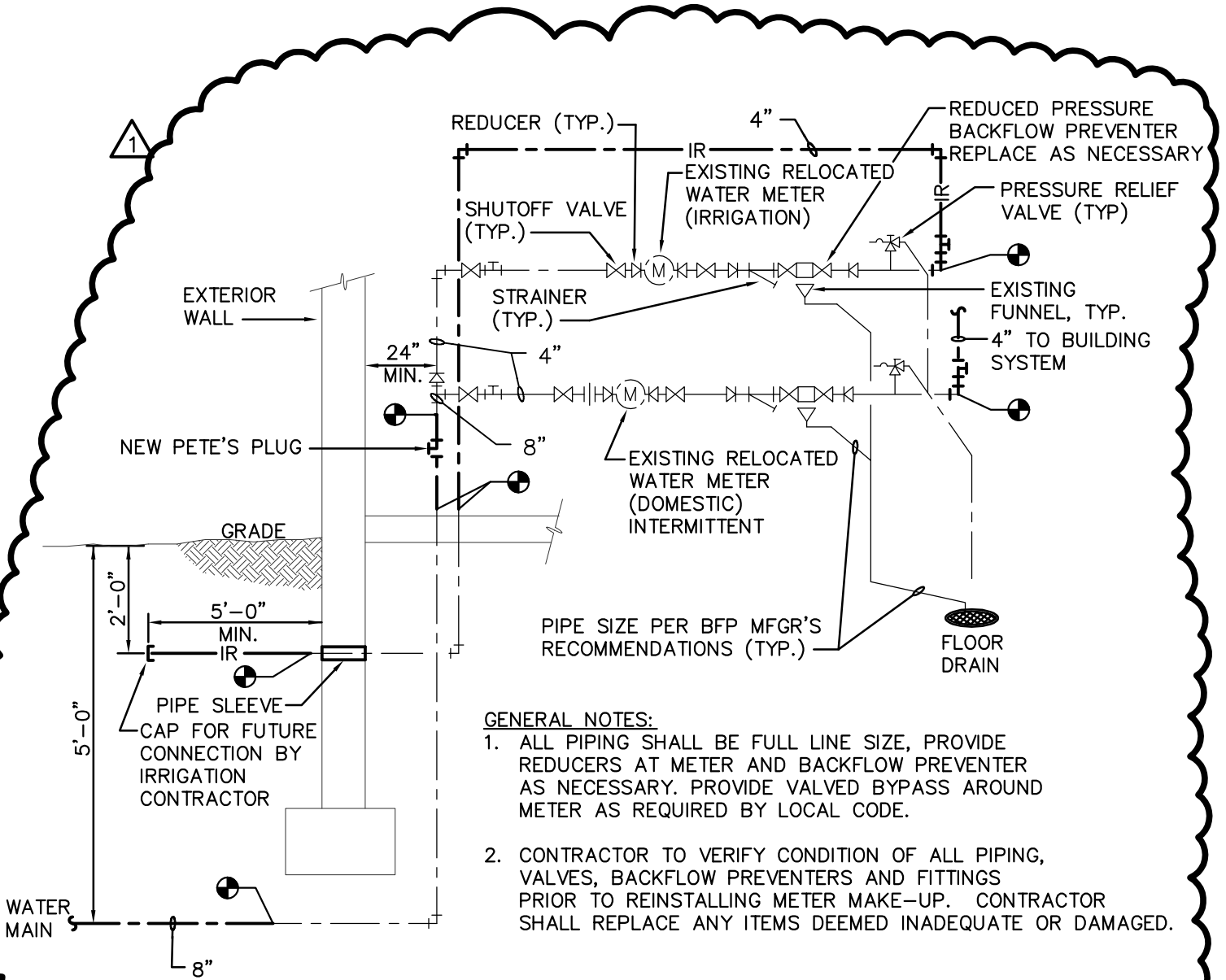
PARTIAL PLUMBING PLAN - FIRST FLOOR
 SCALE: 1/4" = 1'-0"



  **PARTIAL PLUMBING PLAN - FIRST FLOOR**
 SCALE: 1/4" = 1'-0"

PLUMBING KEYNOTES: 

-   NEW DOMESTIC WATER SERVICE ENTRY WITH RELOCATED METERS AND BACKFLOW DEVICES. SEE DETAIL 7/P5.1 FOR INSTALLATION REQUIREMENTS. CONNECT NEW 8" DCW MAIN TO EXISTING PIPE AT PENETRATION THROUGH FLOOR. COORDINATE EXACT LOCATION.
-  CONNECT NEW 4" DCW LINE TO EXISTING 4" MAIN, SERVING EXISTING BUILDING IN THIS APPROXIMATE LOCATION.



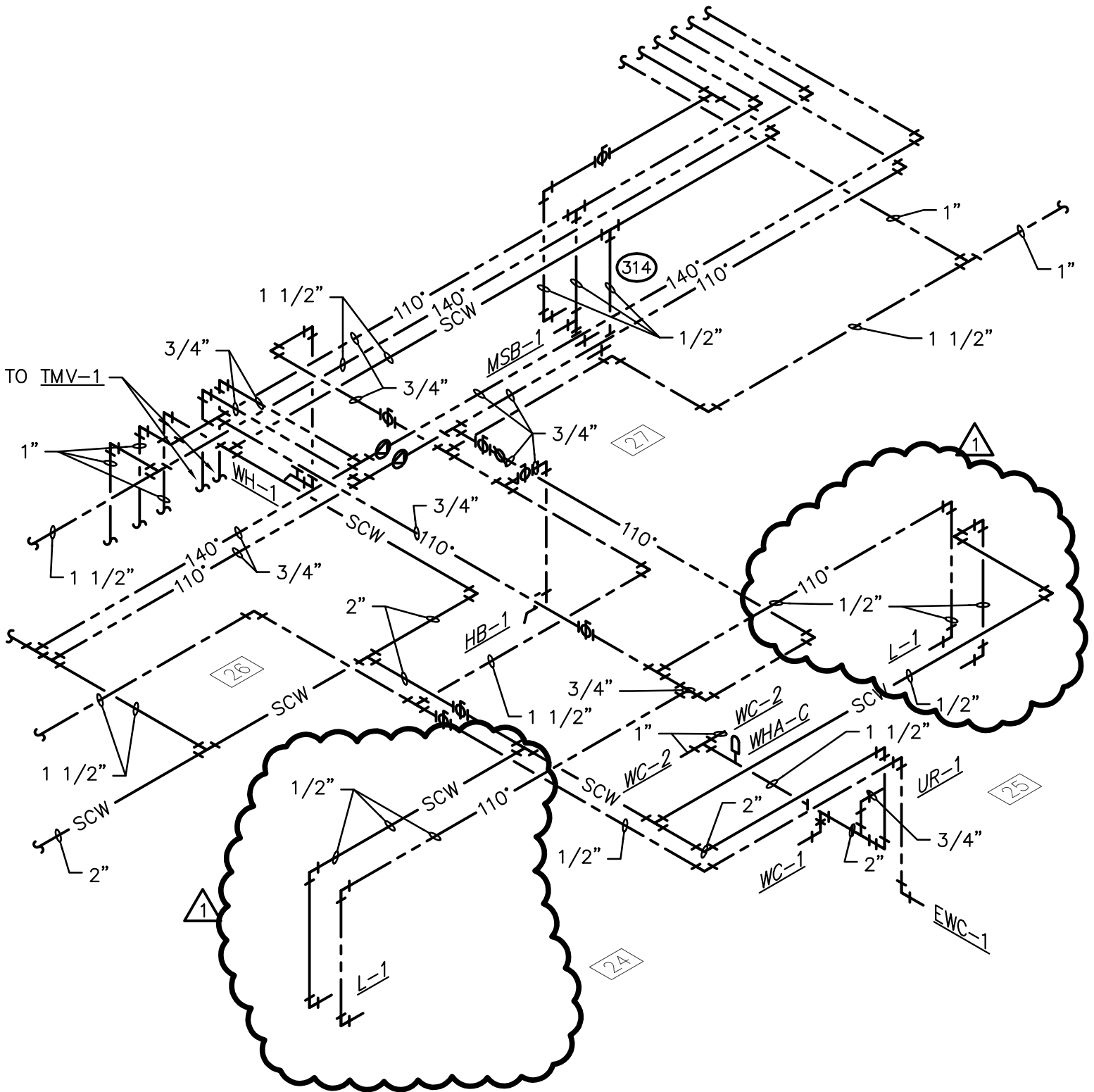
GENERAL NOTES:

1. ALL PIPING SHALL BE FULL LINE SIZE, PROVIDE REDUCERS AT METER AND BACKFLOW PREVENTER AS NECESSARY. PROVIDE VALVED BYPASS AROUND METER AS REQUIRED BY LOCAL CODE.
2. CONTRACTOR TO VERIFY CONDITION OF ALL PIPING, VALVES, BACKFLOW PREVENTERS AND FITTINGS PRIOR TO REINSTALLING METER MAKE-UP. CONTRACTOR SHALL REPLACE ANY ITEMS DEEMED INADEQUATE OR DAMAGED.

WATER SERVICE ENTRY DETAIL

7

NO SCALE



NEW CAFETERIA
WATER RISER DIAGRAM

NO SCALE