



ADDENDUM NO. 2

1.01 NOTICE TO BIDDERS

- A. Date: 19 March 2013
- B. From: Bahr Vermeer and Haecker Architects, Ltd.
- C. To: Prospective Bidders.
- D. Project: Lexington Public Schools Lexington Middle School and Community Recreation Facility Addition 100% Contract Documents
- E. This addendum is issued by the Architect to all bidders of record prior to receipt of proposals. Bidders shall acknowledge receipt of this addendum by so indicating on the Bid Form. Failure to do so may subject Bidder to disqualification.
- F. All information and instructions given herein shall become a part of the Contract Documents.

1.02 SPECIFICATIONS

- A. Section 064100 Architectural Wood Casework:
 - 1. Revise Category Headings to match the Sub-Categories. Part 1 is not used.
 - 2. Part 3.01: Add LSI Corporation of America & Architectural Arts as an Additional Approved Manufacturer.
- B. Section 083313 Coiling Counter Doors:
 - 1. Part 2.01: Add Cornell Iron Works as an Additional Approved Manufacturer.

1.03 DRAWINGS

- A. Sheet G1.1 Sheet Index, Wall Types:
 - 1. Add Wall Types General Note:
All metal stud and masonry partition walls shall extend to the bottom of ceiling or roof deck. See Structural Details for partition top of wall support details.

See Mechanical and Electrical Addenda attached.

END OF ADDENDUM

Issued By: Bryan Solko AIA, BVH Architects

Date: 19 March 2013

cc: Submittal Exchange

BAHR VERMEER HAECKER ARCHITECTS

440 NORTH 8TH STREET STE 100
1425 JONES STREET

LINCOLN NE 68508
OMAHA NE 68102

402 475 4551
402 345 3060

bvh.com



DATE ISSUED March, 19th 2013

ADDENDUM # 2

ENGINEER Engineering Technologies, Inc.
825 M Street, Suite 200
Lincoln, NE 68508

PROJECT Lexington Middle School & CRF Addition

ETI PROJECT # 2011-140

The Architect issues this Addendum to all known bidders before receipt of proposals. Bidder shall acknowledge the receipt of this addendum on their proposal sheet and all information contained herein shall become a part of the contract documents.

ADDENDUM:

PRIOR APPROVAL – MECHANICAL

1. The following manufacturers have received prior approval for bidding purposes subject to shop drawing review:

A. List Equipment Here

- Variable Volume Reheat Boxes
Intake/Relief Roof Hoods
Volume Dampers
Combination Fire and Smoke Dampers
Registers, Grilles and Diffusers
Spiral Ductwork
Exhaust Fans
Axial Fans
Kitchen Hoods
Ceiling Unit Heaters
Horizontal Unit Heaters
Split System Ductless A/C Units
Base Mounted Pumps
Domestic Water Pumps
Submersible Sump
Pump Inertia Bases
Suction Diffusers
Triple Duty Valves
Pump Flex Connectors
Hydronic Expansion Tanks
Domestic Water Expansion Tanks
Air/Dirt Separator
Butterfly, Check and Ball Valves
Strainers
Circuit Setters Balancing Valve
Autoflow Cartridge Balancing Valve
Relief Valves
Air Vents
Glycol/Water Make-up Tanks
Backflow Preventers

List Manufacturer Here

- Price Industries, Nailor
Loren Cook, Twin City Fan
Air Balance,
Air Balance,
Nailor
Spiral Pipe of Texas
Loren Cook, Twin City Fan, ACME
Twin City Fan
CaptiveAire
McQuay, Vulcan
McQuay, Vulcan
Daikin
Wilo, Patterson
Wilo
Wilo, Weil
Mason, Vibration Isolation Company
American Wheatley, Patterson, Armstrong
American Wheatley, Patterson, Armstrong, B&G
American Wheatley, Flex-Hose
American Wheatley, Patterson, Armstrong
American Wheatley
Thrush, B&G
American Wheatley, ISLIP
American Wheatley, ISLIP
American Wheatley
Flow Design Inc., Nexus
American Wheatley, Conbraco
American Wheatley, Armstrong
John Woods
Apollo

SPECIFICATIONS – MECHANICAL

1. Section 21 1300 –Fire-Suppression Sprinkler Systems
 - A. Add the following flow test information to the end of 2.02A Sprinkler System.

“A flow test was performed by Nebraska Fire Sprinkler Corporation on March 8th, 2013. Static Pressure = 48psi / Residual = 44 psi at 13th and Washington. Flow = 840 gpm at 12th and Washington.

”
2. Section 23 0913 – Instrumentation and Control Devices for HVAC
 - A. Remove 3.02K in regards to control wiring in conduit and replace with the following:

“Provide all control wiring in conduit except above concealed ceilings. Provide plenum rated cable above concealed ceilings. Areas that have architectural clouds for ceilings shall be considered an exposed ceiling and conduit shall be installed. Plenum rated cable shall be routed neatly and secured to structure. Cable routing shall only run parallel with or perpendicular to steel structure. Conduit and electrical wiring shall be in accordance with Section 26 2717. Electrical material and installation shall be in accordance with appropriate requirements of Division 26.”
3. Section 23 3300 –Air Duct Accessories
 - A. Change the following to 2.03E Combination Fire and Smoke Dampers:

“Operators: UL listed and labeled spring return electric type suitable for 120 volts, single phase, 60 Hz. Provide end switches to indicate damper position. Locate damper operator on the **exterior** of the duct and line to damper operating shaft.

”
4. Section 23 3813 –Commercial-Kitchen Hoods
 - A. Add the following to 2.05C Hood Accessories:

“6. Fan switch and light switch shall be remote mounted. See electrical plans for final switch locations.”
5. Section 23 7313 –Modular Central-Station Air-Handling Units
 - A. Remove the following from 2.04 Casing: (2.04B in its entirety, 2.04C in its entirety, 2.04D in its entirety).

DRAWINGS – MECHANICAL

1. Sheet ME1.0 Mechanical/Electrical Utility Plan
 - A. For clarification this plan was bid in a previous package and was added to this set for coordination purpose only.
2. Sheet M1.1A First Floor Plan – Area A - Plumbing
 - A. Add the following General Note in regards to removing the temporary gas piping.

“This contractor shall be responsible for removing 3” temporary gas service, gas meter and piping. Temporary gas service meter is currently located on the east side of the existing Gym. The gas piping runs exposed up the existing Gym wall, over the Gym roof and back down to where the original service entered the building. For routing of temporary gas piping see sheet ME1.0. The new gas service location is shown on sheet M1.1C.”
3. Sheet M1.1C First Floor Plan – Area C - Plumbing
 - A. See sheet M1.1C-1 for changes to the plumbing plan.
 - B. See sheet M1.1C-2 for changes to the plumbing plan
 - C. See sheet M1.1C-3 for changes to the plumbing plan
 - D. See sheet M1.1C-4 for changes to the plumbing plan
4. Sheet M1.1D First Floor Plan – Area D - Plumbing
 - A. See sheet M1.1D-1 for changes to the plumbing plan.
5. Sheet M1.1K Enlarged Kitchen - Piping Plan
 - A. See sheet M1.1K-1 for changes to the plumbing plan.
 - B. See sheet M1.1K-2 for changes to the plumbing plan.
 - C. See sheet M1.1K-2 for changes to the plumbing plan.
 - D. See sheet M1.1K-2 for changes to the plumbing plan.
6. Sheet M1.2C Second Floor Plan – Area C – Plumbing
 - A. See sheet M1.2C-1 for changes to the plumbing plan and added sheet note number 10.
 - B. See sheet M1.2C-2 for changes to the existing Gymnasium rainwater and added sheet note number 9.
7. Sheet M2.2A Second Floor Plan – Area A - Mechanical
 - A. See sheet M2.2A-1 for changes to the mechanical plan and sheet note number 1.
 - B. See sheet M2.2A-2 for changes to the mechanical plan.

8. Sheet M2.2C Second Floor Plan – Area C - Mechanical
 - A. See sheet M2.2C-1 for changes to the mechanical Plan.
9. Sheet M2.3A Third & Fourth Floor Plan – Area A – Mechanical
 - A. See sheet M2.3A-1 for changes to mechanical plan.
 - B. See sheet M2.3A-2 for changes to mechanical plan and added general notes and added sheet notes.
10. Sheet M3.1A First Floor Plan – Area A - HVAC
 - A. See sheet M3.1A-1 for changes to the HVAC plan and added general note and added sheet note number 22.
11. Sheet M3.2A Second Floor Plan – Area A - HVAC
 - A. See sheet M3.2A-1 for changes to the HVAC plan and added sheet note number 5.
 - B. See sheet M3.2A-2 for changes to the HVAC plan.

PRIOR APPROVAL – ELECTRICAL

1. The following manufacturers have received prior approval for bidding purposes subject to shop drawing review:

<u>List Equipment Here</u>	<u>List Manufacturer Here</u>
Light Fixture #1, 2, 3, 4, 5	Columbia
Light Fixture #6	Columbia
Light Fixture #7, 8	Columbia
Light Fixture #9, 10	Columbia
Light Fixture #11, 12	Columbia
Light Fixture #13	Kenall
Light Fixture #14, 15	Dual-Lite
Light Fixture #16, 17	Columbia
Light Fixture #18	Columbia
Light Fixture #19	Cooper, Columbia
Light Fixture #20, 22, 23	Precision Architectural Lighting, Finelite
Light Fixture #24,25, 26, 27	Columbia
Light Fixture #28	Eclipse, Kenall
Light Fixture #29	Eclipse, Kenall
Light Fixture #30, 31	Prescolite
Light Fixture #33	Cooper, Prescolite
Light Fixture #34, 35, 36	Precision Architectural Lighting, Finelite
Light Fixture #37	National, Alera
Light Fixture #38	National, Alera
Light Fixture #39, 40	Axis Lighting, Litecontril
Light Fixture #41	Cooper, Columbia
Light Fixture #42	Eclipse, Kenall
Light Fixture #43	Eclipse, Kenall
Light Fixture #44	Eclipse, Kenall
Light Fixture #45	Lithonia, Cooper, Kenall
Light Fixture #46, 47	Precision Architectural Lighting, Finelite
Light Fixture #49, 50, 51	Cooper, Columbia
Light Fixture #52, 53	Cooper, Columbia
Light Fixture #54	Axis Lighting, Litecontrol
Light Fixture #56	Dual-Lite
Light Fixture #57	Kenall
Light Fixture #58, 59, 60	Cooper, Prescolite
Light Fixture #61	Lumenton
Light Fixture #62	Camman Industries
Light Fixture #63, 64	Neoray, Alera
Light Fixture #65, 66	Columbia
Light Fixture #67	Alera
Light Fixture #68	Cooper, Prescolite
Light Fixture #69/70	Lumen Pulse
Light Fixture #71	Elite/Maxilumen, Conservation Technology
Light Fixture #72	Axis Lighting
Light Fixture #73	Neoray, Alera
Light Fixture #76	Cooper, ABS Lighting
Light Fixture #74	Camman Industries

SPECIFICATIONS – ELECTRICAL

- 1. Section 27 1005 – Structured Cabling for Voice and Data
 - A. Only the specified system is acceptable.
- 2. Section 27 5117 – Public Address Systems
 - A. This section applies to the Recreation Center only. The amplifier shall be installed in IT CLST C132.1 and all speaker cabling in this area shall be extended to this amplifier.
- 3. Section 27 6124 – Intercom Systems
 - A. Bogen Multicom 2000 is an acceptable alternate to the specified equipment.
 - B. Bogen Speakers and clocks are acceptable alternatives.

4. Section 28 3100 – Fire Detection and Alarm
 - A. Provide conduit, cable, and connection to the Post Indicator valves. One is an existing valve located to the west of Area A (see Sheet C1.5), and one is a new valve located to the west of Area B (see Sheet C1.5). The switch shall be furnished by Fire Sprinkler Contractor
 - B. Silent Knight IFP-1000 ECS is an acceptable fire alarm panel subject to shop drawing review. If Silent Knight is used, the existing notification devices shall be connected to this panel and all necessary equipment must be provided to make a fully code compliant and fully functional system. All existing initiation devices must be replaced with addressable devices that are UL listed for use with the Silent Knight panel.

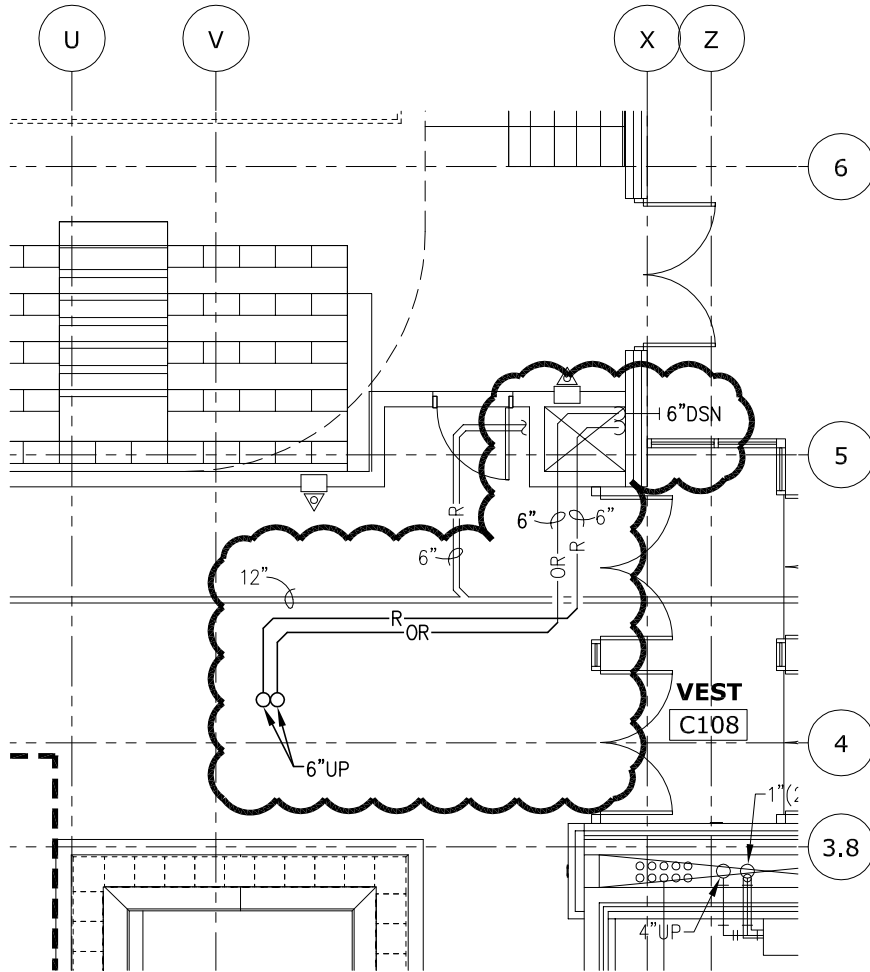
DRAWINGS – ELECTRICAL

1. Sheet ME1.0
 - A. This sheet is for reference only and the work has been bid and completed.
2. Sheet E1.1A
 - A. See attached drawing E1.1A #1 for work in the existing gymnasium.
3. Sheet E3.1B
 - A. See attached drawing E3.1B #1 for speakers in kitchen area.
4. Sheet E3.1C
 - A. See attached drawing E3.1C #1 for additional clocks.
5. Sheet E3.1D
 - A. In W. LCKR D123 one of the circuits, L8-24, connected to a hand dryer shall be changed to L8-26.
 - B. Add clock in Child Watch D138. See attached drawing E3.1D #1.
 - C. Add receptacles to IT CLST D132.1. See attached drawing E3.1D #1.
 - D. In Conference D134, provide 2 data cables and jacks in floor box. Provide mounting brackets for jacks.
6. Sheet E3.2C
 - A. Provide circuit to generator engine heater and one circuit to generator battery charger. See attached drawing E3.2C #1.
 - B. Provide receptacle on west wall for fill tanks. See attached drawing E3.2C #1.
 - C. Provide receptacle on roof for roof service of equipment. Do not mount on access panel of equipment. See attached drawing E3.2C #1.
 - D. Relocate the ATS to east wall. See attached drawing E3.2C #1.
 - E. Added a duct smoke detector in the return duct of RF-1. See attached drawing E3.2C #1.
 - F. Added a duct smoke detector in the supply of ERV-1. See attached drawing E3.2C #1.
 - G. Re-arranged the switchboard layout. See attached drawing E3.2C #1.
 - H. When the existing generator is removed, the exhaust shall be removed and the roof penetration patched.
7. Sheet E3.2D
 - A. In Exercise Room D208, revise Note 3 to read as follows:
 “Floorbox shall be multi-service with two data outlets, two duplex receptacles, and one coax TV (RG6 Quadshield). Provide all mounting brackets. Box shall be Steel City 843SC with duplex lift lids. Provide a splitter in the box so the one coax TV can feed two pieces of gym equipment. Provide one conduit for power and one ¾” conduit for the two data and one coax. The low voltage conduit from each box shall run to the east in the topping past gridline “S” and then drop down to above the lay-in ceiling below and free air to IT CLST D132.1”
 - B. Deleted 3 duplex power outlets and 2 data outlets along north wall in Exercise Room D208. See attached drawing E3.2D #1.
 - C. Delete Note 11 in Exercise Room D208.
 - D. Change Note 4 to read “Provide relay for connection by Controls Contractor.”
 - E. Added two clocks in Exercise Room D208. See attached drawing E3.2D #1.
 - F. The speaker cable in the Rec Center shall be extended to IT CLST D132.1. See attached drawings E3.2D #1 & #2.
 - G. Add a fire alarm pull station by Stair #2 S202 and by Stair #5 S205.
8. Sheet E4.1
 - A. Provide a combination starter/disconnect Size O for Pumps P-5, 6, 7.
 - B. Provide universal mounting bracket for EUH, QMARK MMB-10.
 - C. Provide a duct smoke detector and fire alarm shutdown relay for RF-1
 - D. Provide a duct smoke detector and fire alarm shutdown relays for ERV-1.

9. Sheet E4.2
 - A. Panel "LMD2" – the grounds to Panel "L4" shall be two #3.
 - B. Circuit H4-11 feeds a CUH not ECH.
 - C. Circuit H4-20 shall be changed to a 25A/1P circuit breaker

10. Sheet E6.1
 - A. See attached drawing E6.1 #1 for updated switchboard layout.
 - B. Provide 3 ½" concrete housekeeping pad under switchboard sections.
 - C. Provide 6" steel reinforced isolated concrete pad for generator set. Pad shall be 6" above finish concrete floor.

END OF ADDENDUM

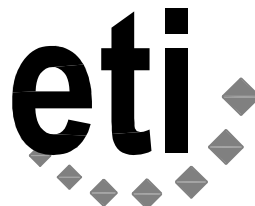


LEXINGTON MIDDLE
 SCHOOL AND CRF
 FIRST FLOOR 'C' PLUMBING



SCALE: 1/8" = 1'-0"

ADDENDUM # 2



Engineering Technologies Inc.
 Mechanical & Electrical Building Solutions

825 M Street, Suite 200 | Lincoln, NE 68508
 P 402.476.1273 | F 402.476.1274
 4559 South 133rd Street | Omaha, NE 68137
 P 402.330.2772 | F 402.330.2630

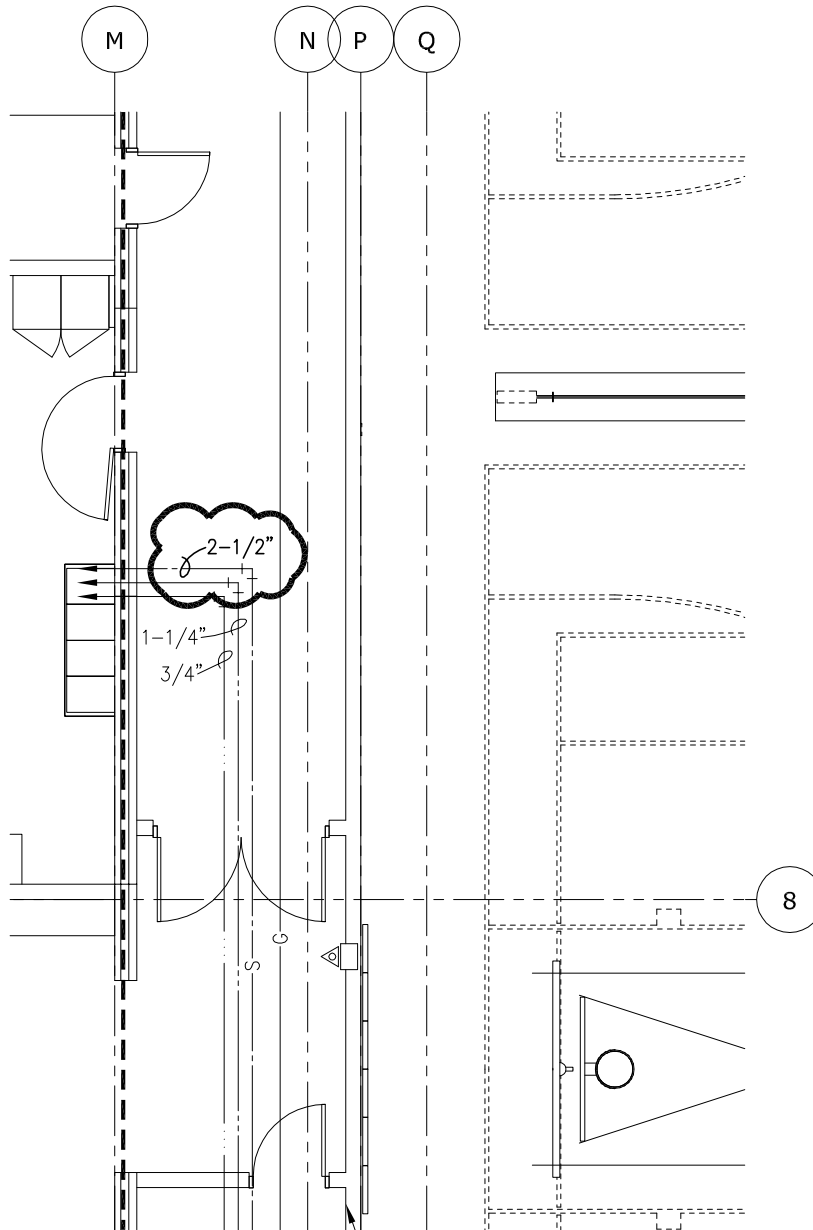
ETI Project No: 2011-140

3/19/13

SHEET
M1.1C
 ATTACHMENT NO.

1

NJS

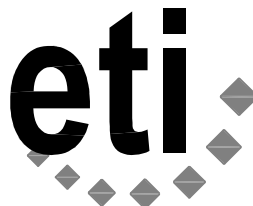


LEXINGTON MIDDLE
SCHOOL AND CRF
FIRST FLOOR 'C' PLUMBING



SCALE: 1/8" = 1'-0"

ADDENDUM # 2



Engineering Technologies Inc.
Mechanical & Electrical Building Solutions

825 M Street, Suite 200 | Lincoln, NE 68508
P 402.476.1273 | F 402.476.1274

4559 South 133rd Street | Omaha, NE 68137
P 402.330.2772 | F 402.330.2630

ETI Project No: 2011-140

3/19/13

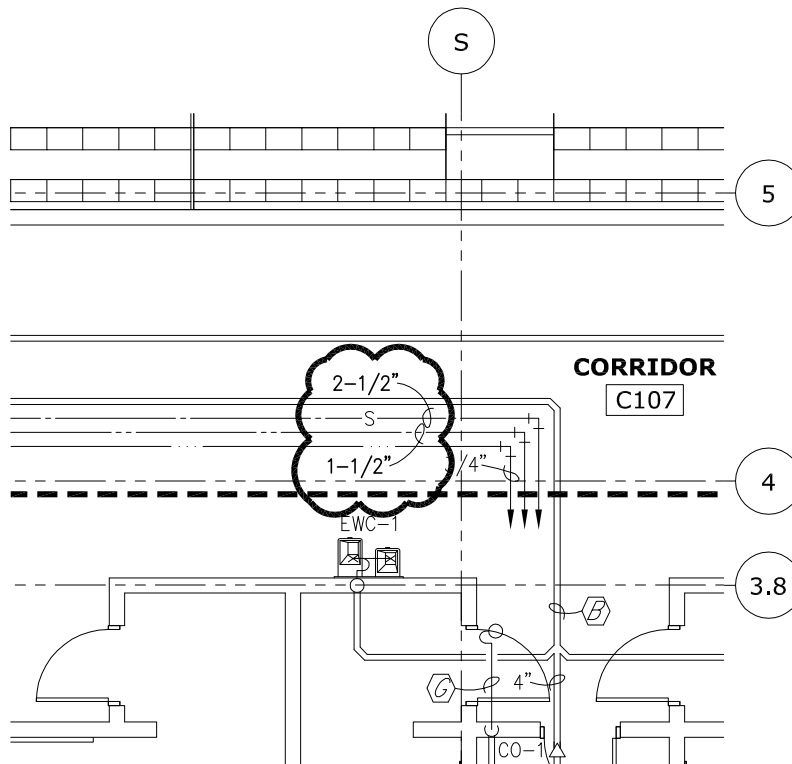
SHEET

M1.1C

ATTACHMENT NO.

2

NJS

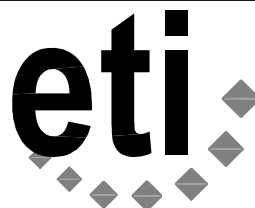


LEXINGTON MIDDLE
SCHOOL AND CRF
FIRST FLOOR 'C' PLUMBING



SCALE: 1/8" = 1'-0"

ADDENDUM # 2



Engineering Technologies Inc.
Mechanical & Electrical Building Solutions

825 M Street, Suite 200 | Lincoln, NE 68508
P 402.476.1273 | F 402.476.1274

4559 South 133rd Street | Omaha, NE 68137
P 402.330.2772 | F 402.330.2630

ETI Project No: 2011-140

3/19/13

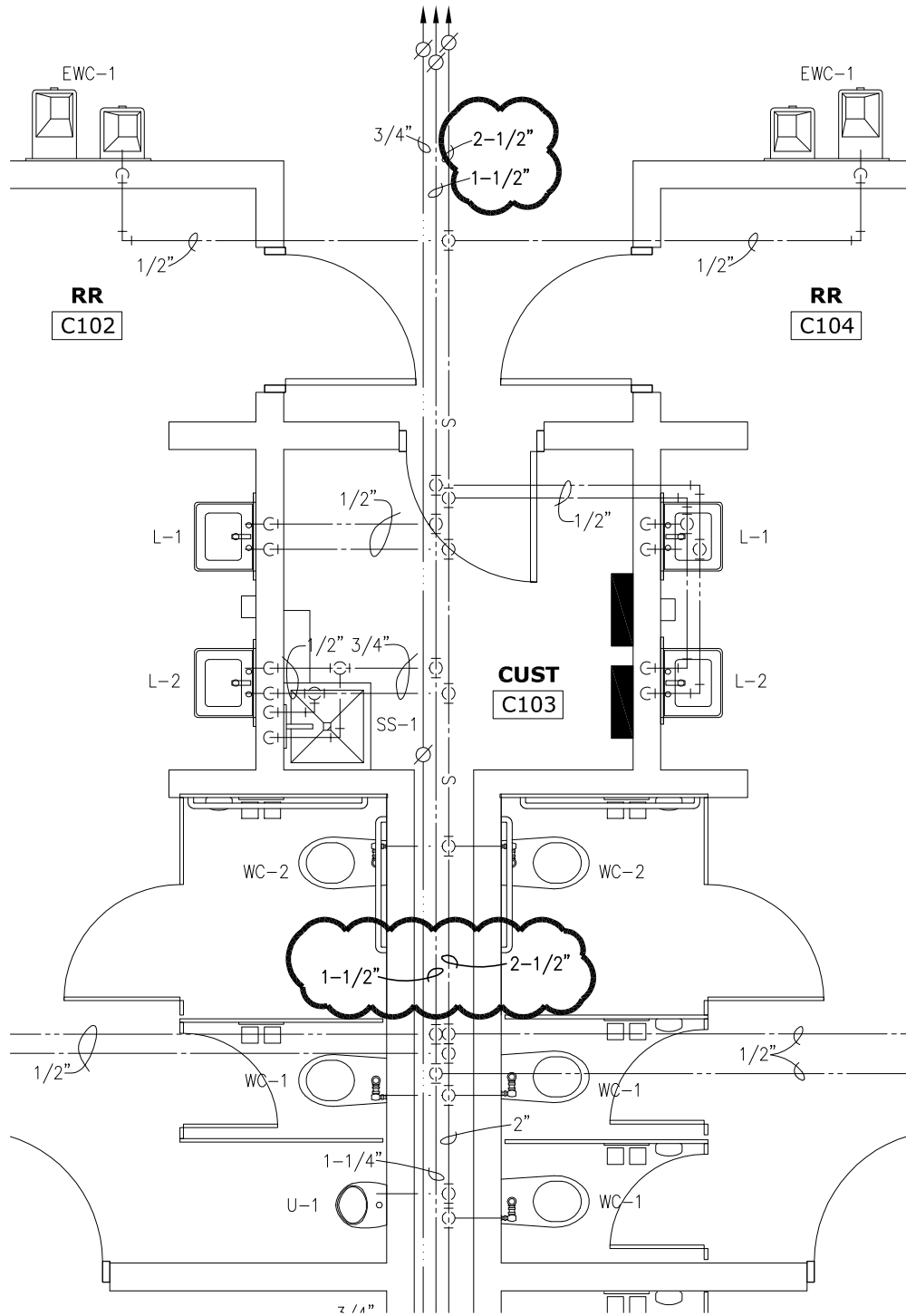
SHEET

M1.1C

ATTACHMENT NO.

3

NJS

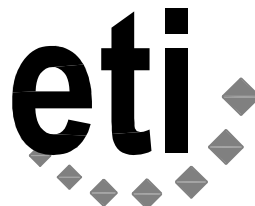


LEXINGTON MIDDLE
 SCHOOL AND CRF
 ENLARGED RR C102, C104



SCALE: 1/4" = 1'-0"

ADDENDUM # 2



Engineering Technologies Inc.
 Mechanical & Electrical Building Solutions

825 M Street, Suite 200 | Lincoln, NE 68508
 P 402.476.1273 | F 402.476.1274

4559 South 133rd Street | Omaha, NE 68137
 P 402.330.2772 | F 402.330.2630

ETI Project No: 2011-140

3/19/13

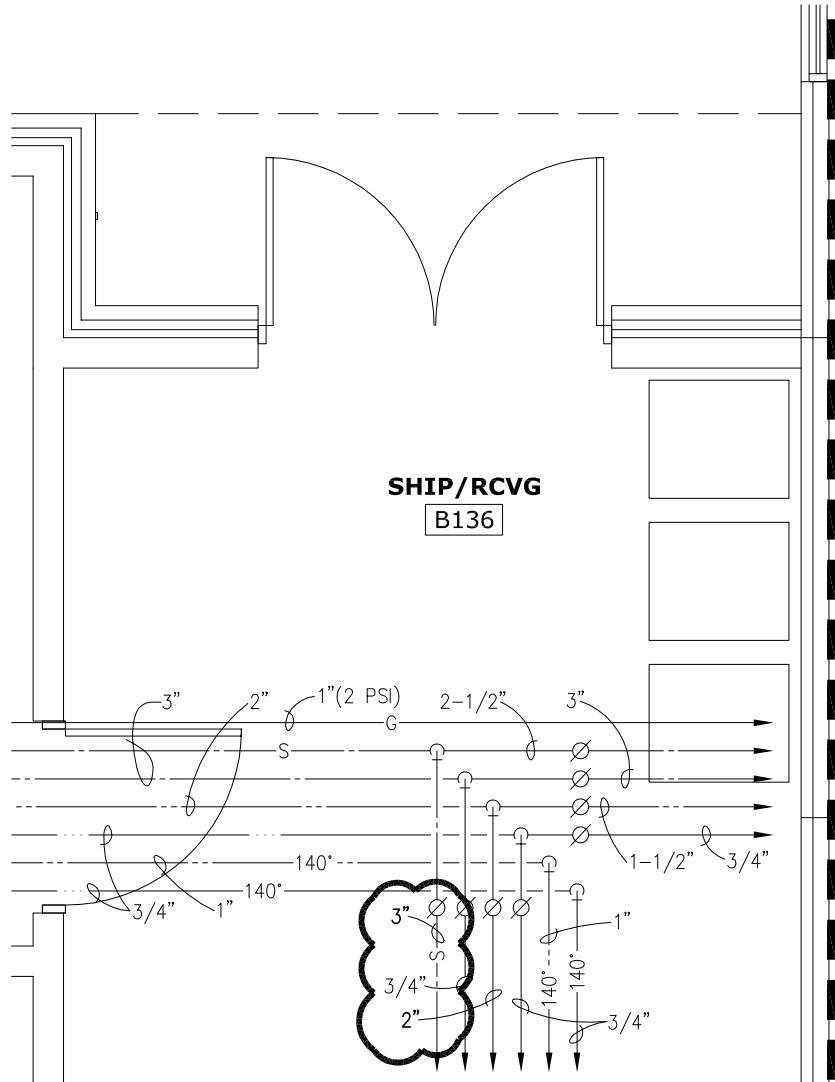
SHEET

M1.1C

ATTACHMENT NO.

4

NJS

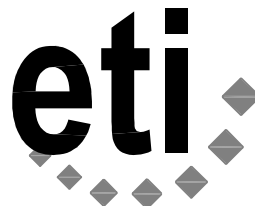


LEXINGTON MIDDLE
SCHOOL AND CRF
ENLARGED MECH ROOM D100



SCALE: 1/4" = 1'-0"

ADDENDUM # 2



Engineering Technologies Inc.
Mechanical & Electrical Building Solutions

825 M Street, Suite 200 | Lincoln, NE 68508
P 402.476.1273 | F 402.476.1274

4559 South 133rd Street | Omaha, NE 68137
P 402.330.2772 | F 402.330.2630

ETI Project No: 2011-140

3/19/13

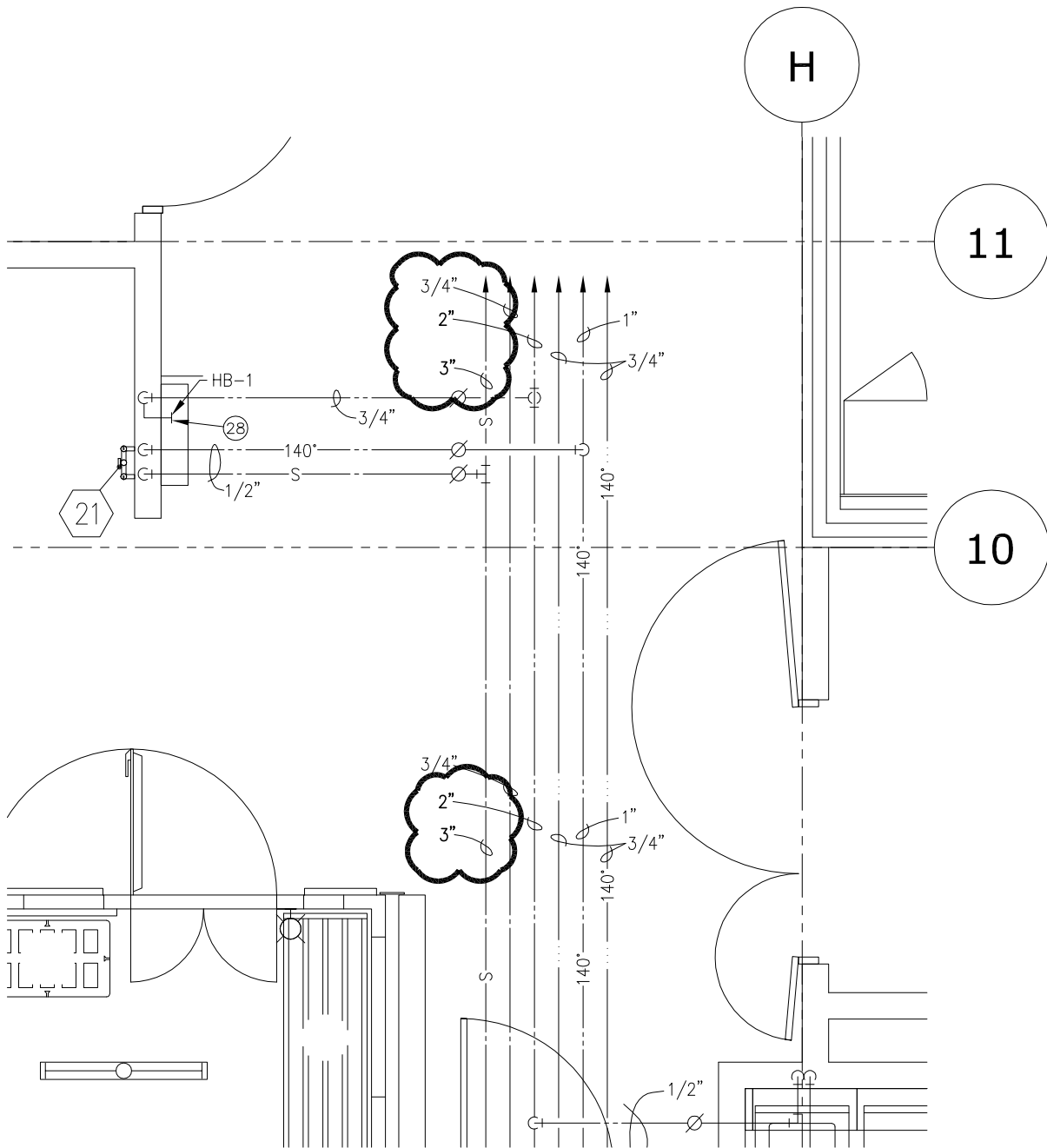
SHEET

M1.1D

ATTACHMENT NO.

1

NJS

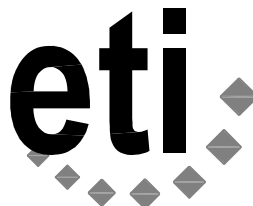


LEXINGTON MIDDLE
SCHOOL AND CRF
ENLARGED KITCHEN PIPING PLAN



SCALE: 1/4" = 1'-0"

ADDENDUM # 2



Engineering Technologies Inc.
Mechanical & Electrical Building Solutions

825 M Street, Suite 200 | Lincoln, NE 68508
P 402.476.1273 | F 402.476.1274

4559 South 133rd Street | Omaha, NE 68137
P 402.330.2772 | F 402.330.2630

ETI Project No: 2011-140

3/19/13

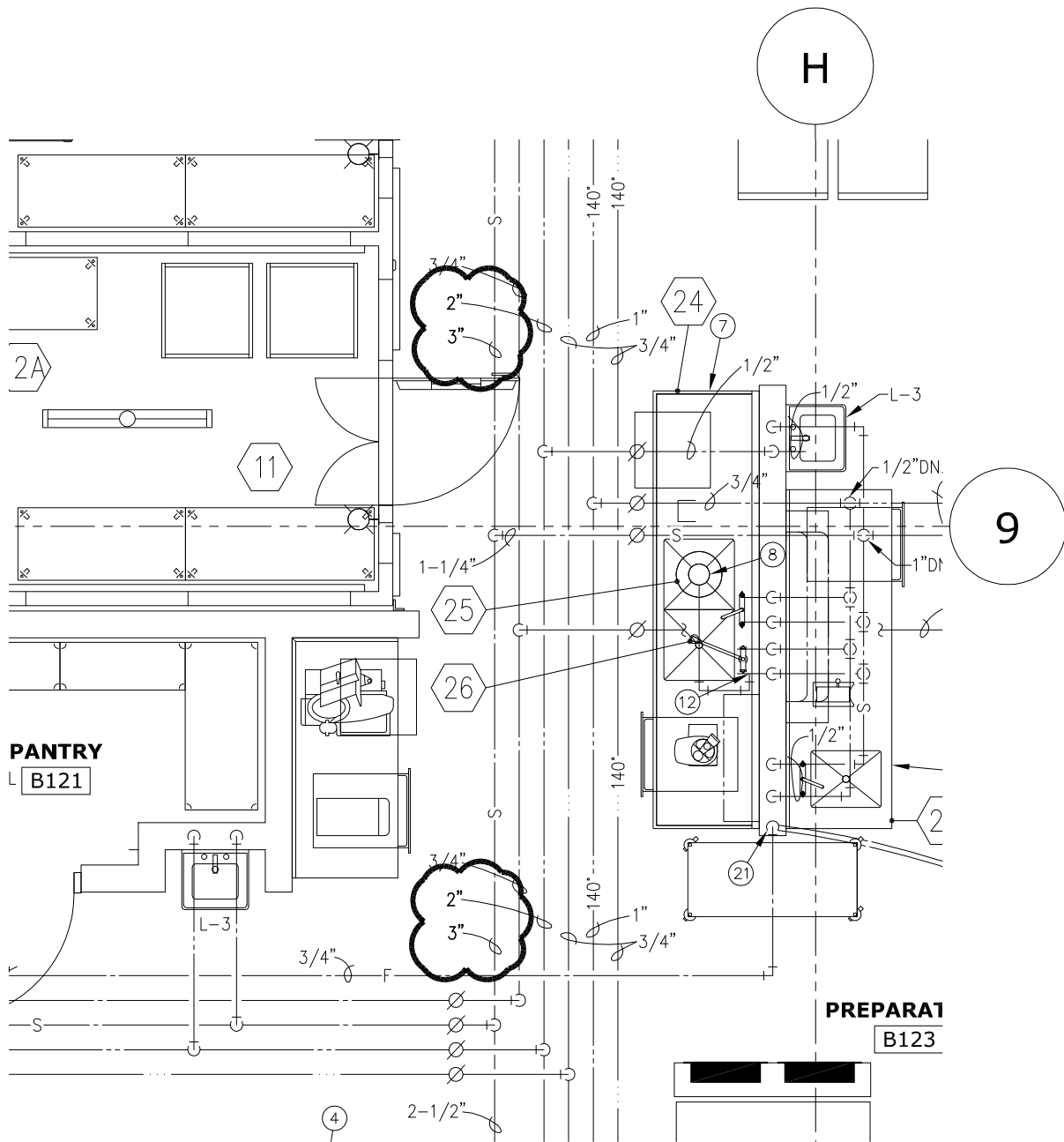
SHEET

M1.K

ATTACHMENT NO.

1

NJS

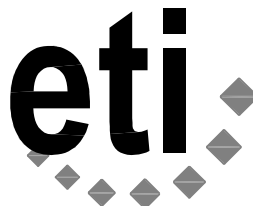


LEXINGTON MIDDLE
SCHOOL AND CRF
ENLARGED KITCHEN PIPING PLAN



SCALE: 1/4" = 1'-0"

ADDENDUM # 2



Engineering Technologies Inc.
Mechanical & Electrical Building Solutions

825 M Street, Suite 200 | Lincoln, NE 68508
P 402.476.1273 | F 402.476.1274

4559 South 133rd Street | Omaha, NE 68137
P 402.330.2772 | F 402.330.2630

ETI Project No: 2011-140

3/19/13

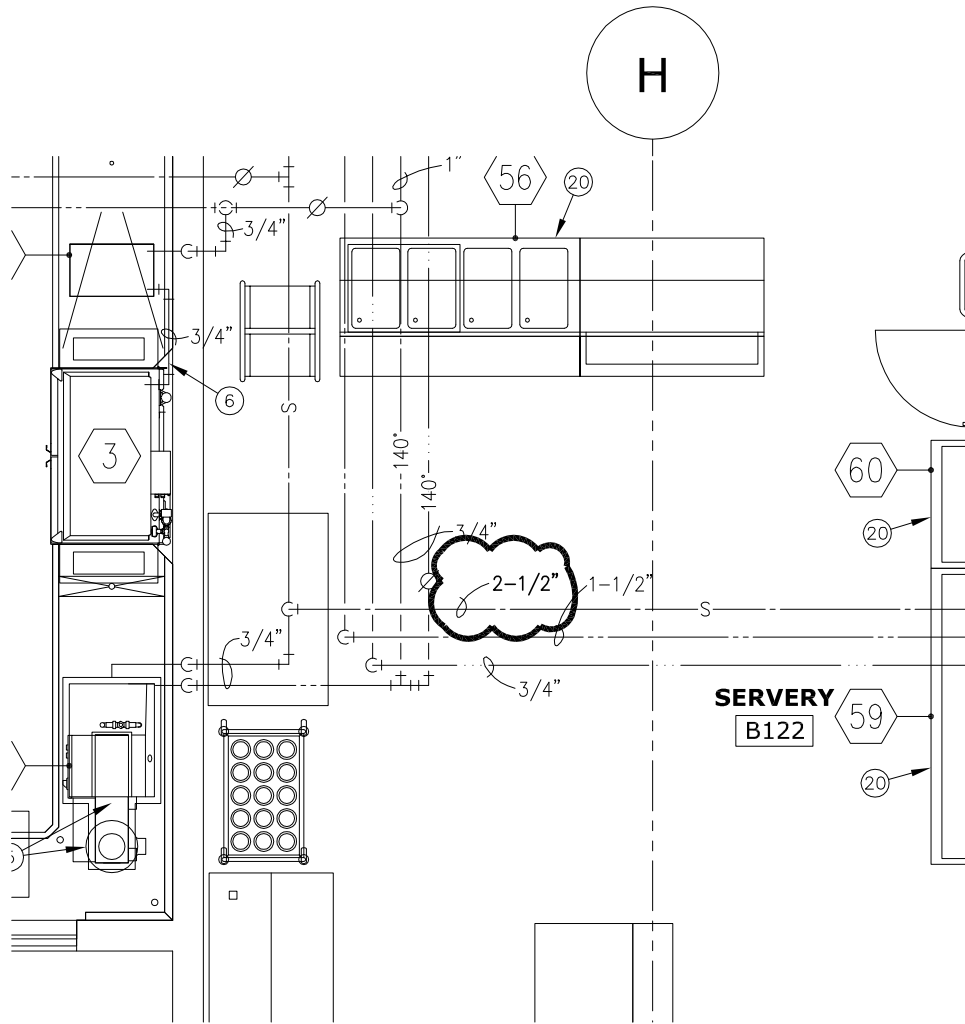
SHEET

M1.1K

ATTACHMENT NO.

2

NJS

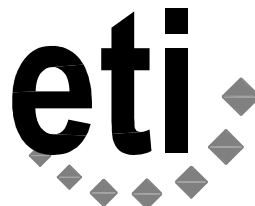


LEXINGTON MIDDLE
SCHOOL AND CRF
ENLARGED KITCHEN PIPING PLAN



SCALE: 1/4" = 1'-0"

ADDENDUM # 2



Engineering Technologies Inc.
Mechanical & Electrical Building Solutions

825 M Street, Suite 200 | Lincoln, NE 68508
P 402.476.1273 | F 402.476.1274

4559 South 133rd Street | Omaha, NE 68137
P 402.330.2772 | F 402.330.2630

ETI Project No: 2011-140

3/19/13

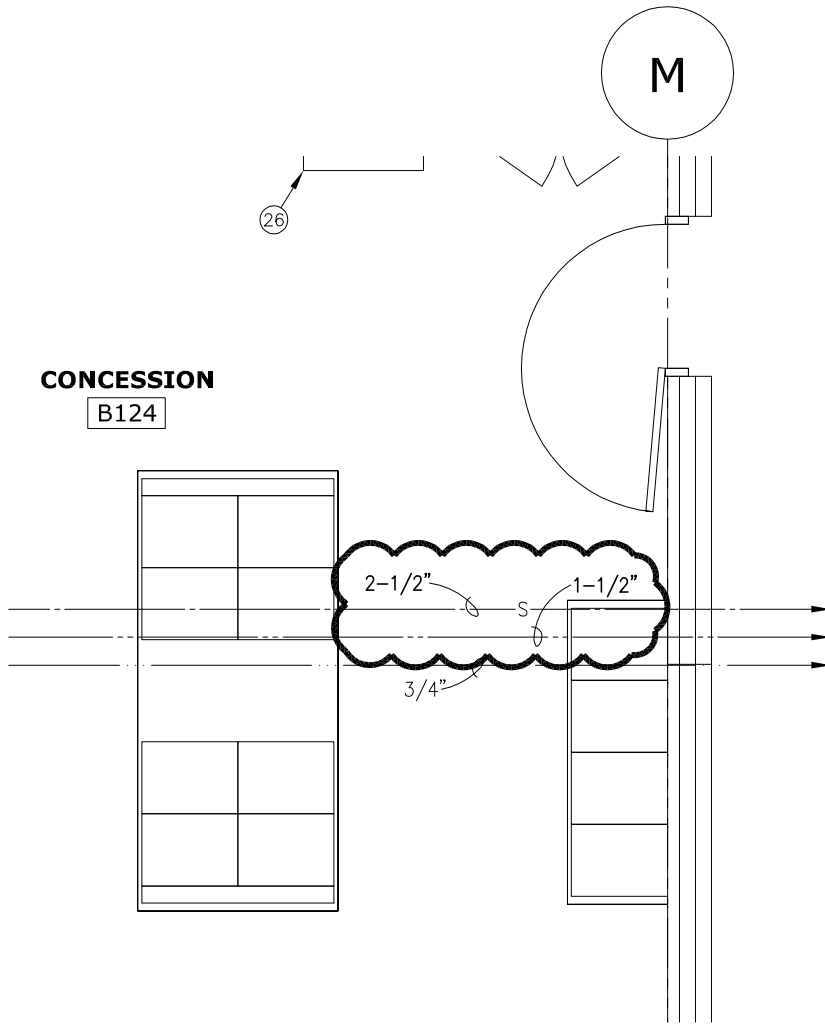
SHEET

M1.1K

ATTACHMENT NO.

3

NJS

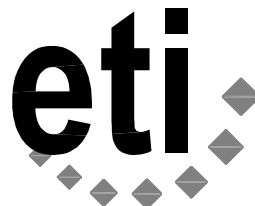


LEXINGTON MIDDLE
SCHOOL AND CRF
ENLARGED KITCHEN PIPING PLAN



SCALE: 1/4" = 1'-0"

ADDENDUM # 2



Engineering Technologies Inc.
Mechanical & Electrical Building Solutions

825 M Street, Suite 200 | Lincoln, NE 68508
P 402.476.1273 | F 402.476.1274

4559 South 133rd Street | Omaha, NE 68137
P 402.330.2772 | F 402.330.2630

ETI Project No: 2011-140

3/19/13

SHEET

M1.K

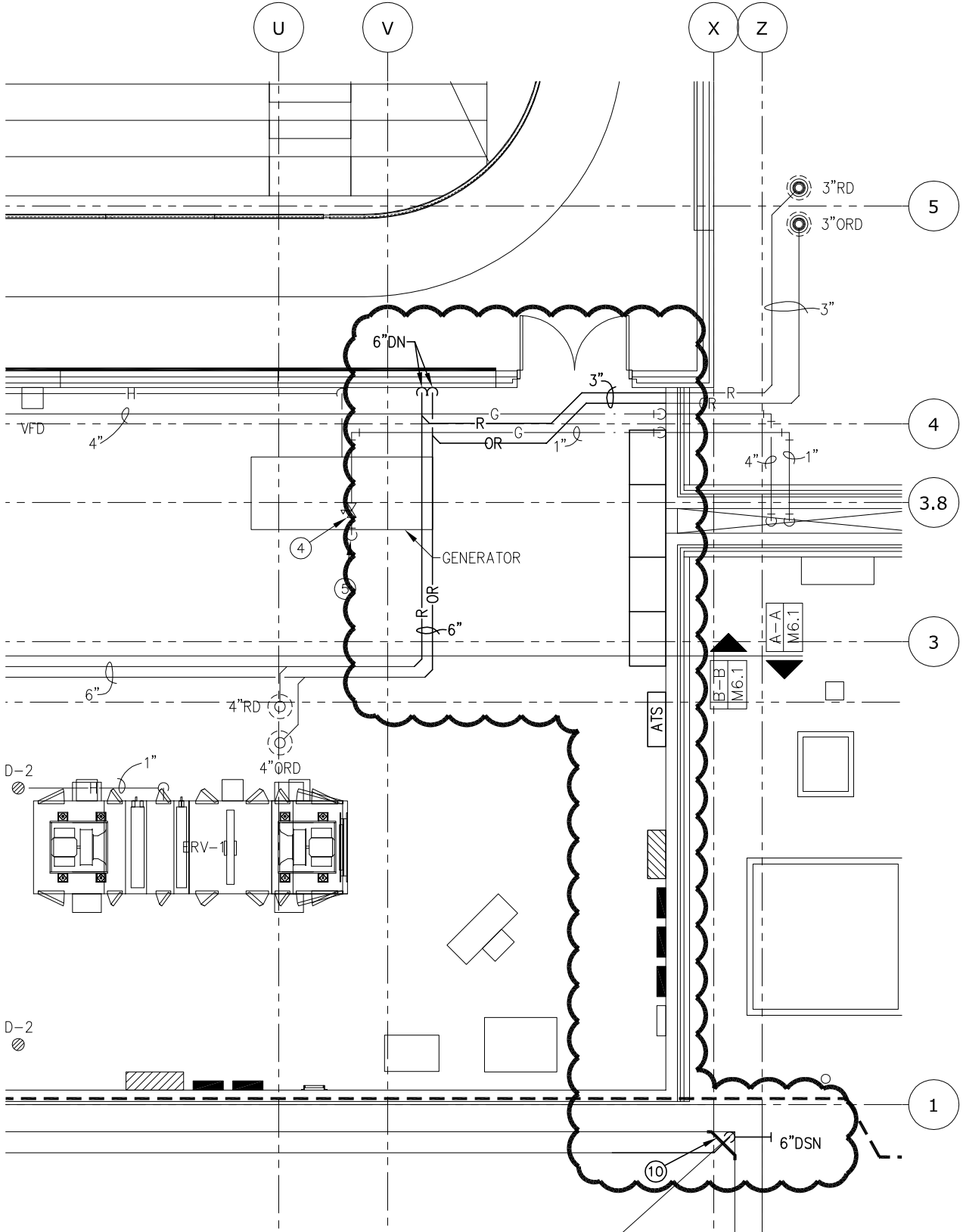
ATTACHMENT NO.

4

NJS

SHEET NOTES

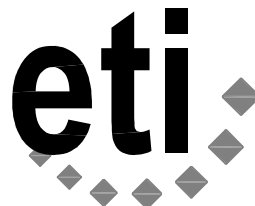
- FIELD FABRICATE STEEL PROTECTIVE COVER TO PROTECT PIPING. PROVIDE 1/8" THICK STEEL PANEL, 6 FEET TALL. INSTALL BOTTOM OF PANEL 12" AFF. PRIME AND PAINT PANEL TO MATCH WALL. PROVIDE PVC JACKET OVER INSULATION ON ENTIRE VERTICAL OVERFLOW PIPING.



LEXINGTON MIDDLE
SCHOOL AND CRF
SECOND FLOOR 'C' PLUMBING

SCALE: 1/8" = 1'-0"

ADDENDUM # 2



Engineering Technologies Inc.
Mechanical & Electrical Building Solutions

825 M Street, Suite 200 | Lincoln, NE 68508
P 402.476.1273 | F 402.476.1274

4559 South 133rd Street | Omaha, NE 68137
P 402.330.2772 | F 402.330.2630

ETI Project No: 2011-140

3/19/13

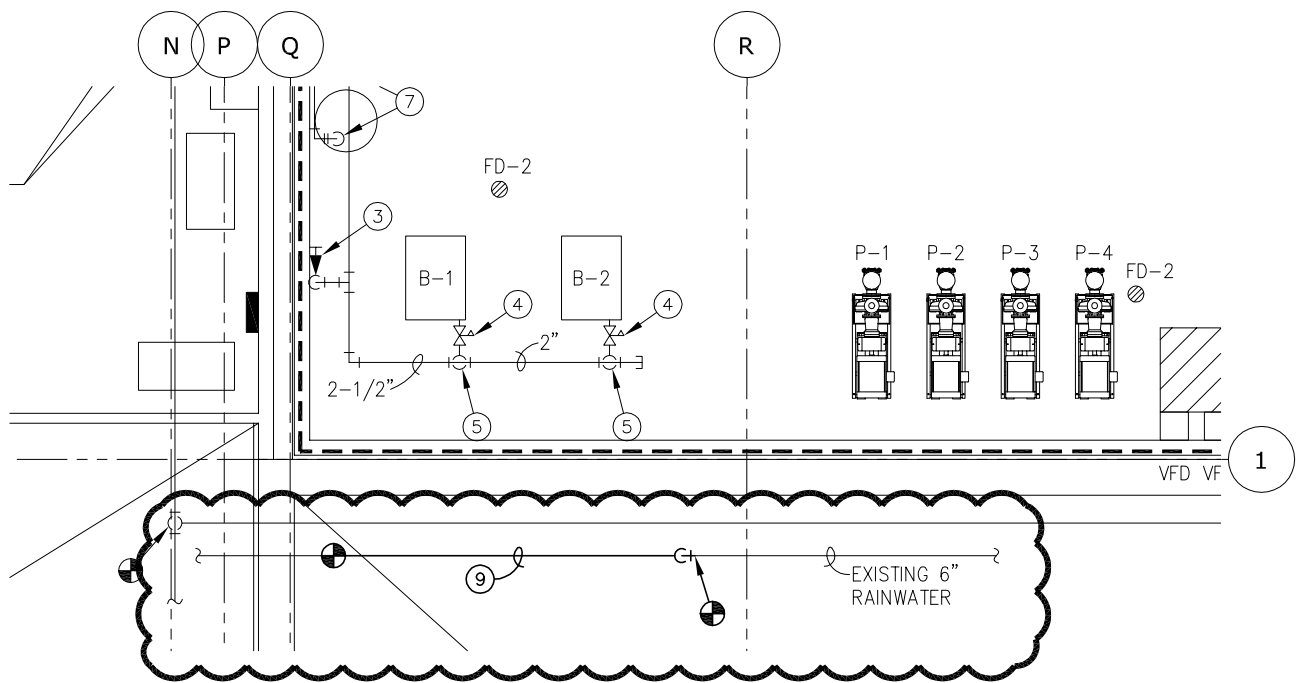
SHEET
M1.2C
ATTACHMENT NO.

1

NJS

SHEET NOTES

9. OFFSET EXISTING RAINWATER PIPING DOWN FOR NEW SUPPLY AND RETURN DUCTWORK.

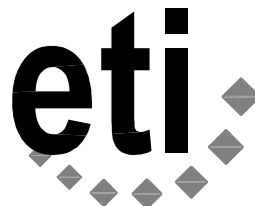


LEXINGTON MIDDLE
SCHOOL AND CRF
SECOND FLOOR 'C' PLUMBING



SCALE: 1/8" = 1'-0"

ADDENDUM # 2



Engineering Technologies Inc.
Mechanical & Electrical Building Solutions

825 M Street, Suite 200 | Lincoln, NE 68508
P 402.476.1273 | F 402.476.1274

4559 South 133rd Street | Omaha, NE 68137
P 402.330.2772 | F 402.330.2630

ETI Project No: 2011-140

3/19/13

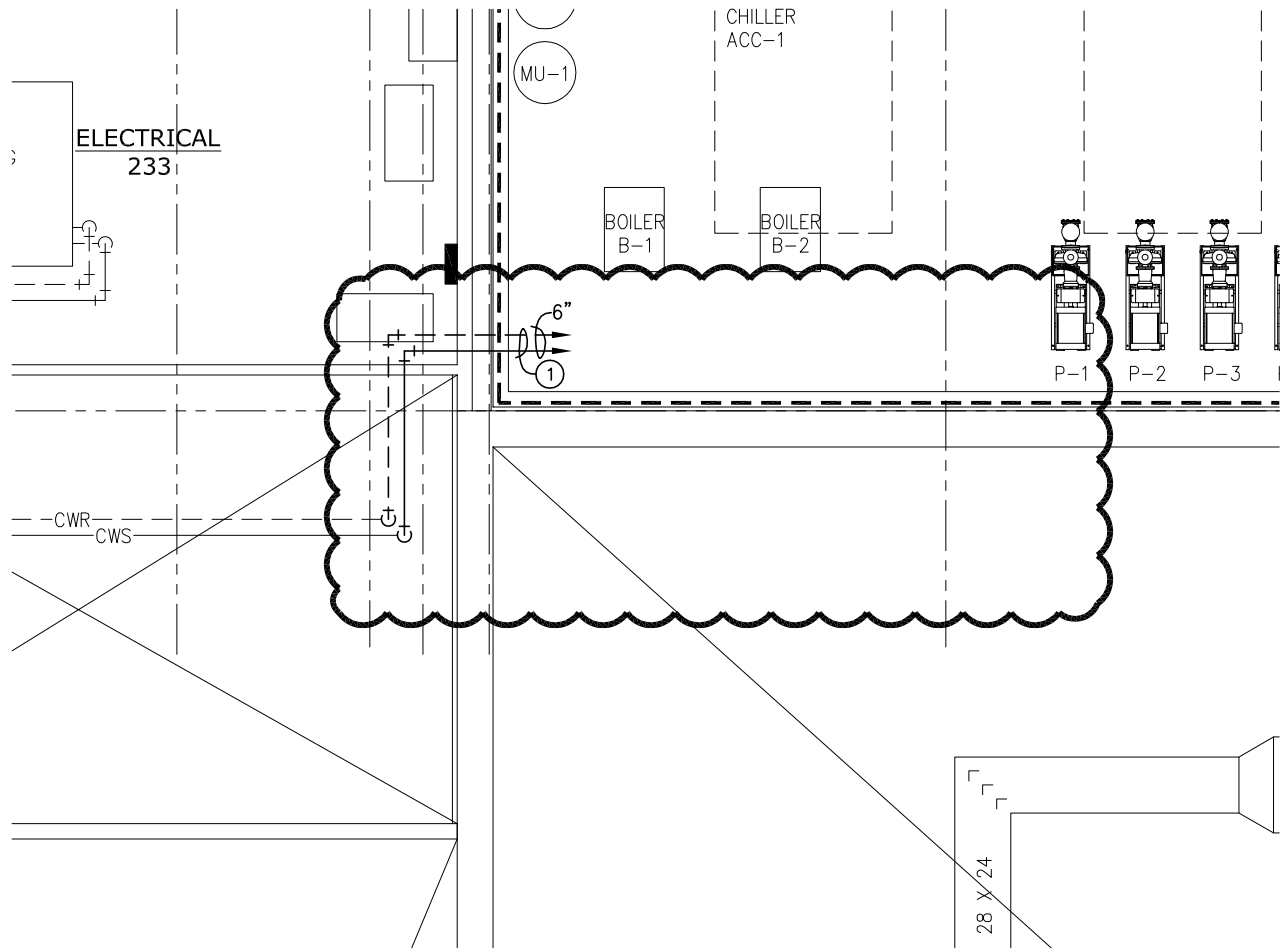
SHEET
M1.2C
ATTACHMENT NO.

2

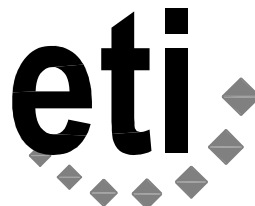
NJS

SHEET NOTES

- FOR CONTINUATION OF PIPING SEE SHEET M2.2C.



LEXINGTON MIDDLE
SCHOOL AND CRF
SECOND FLOOR 'A' MECHANICAL

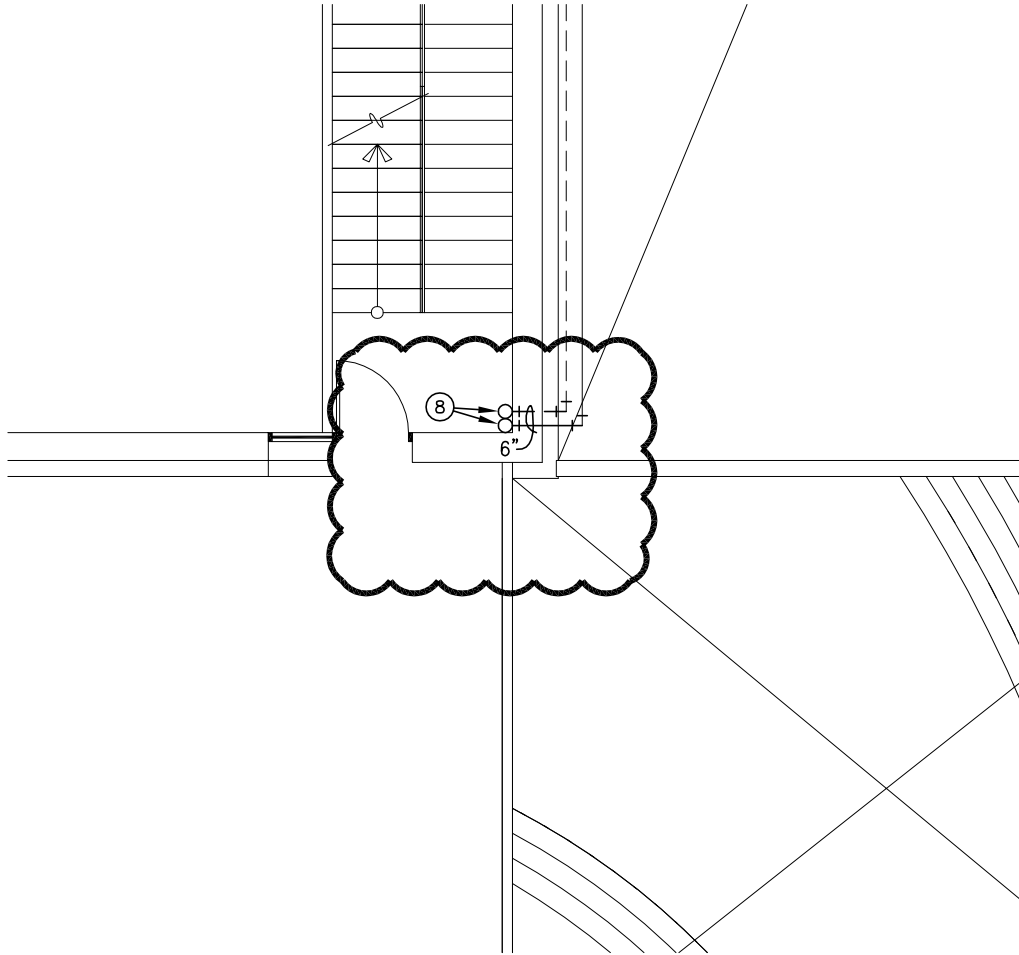


Engineering Technologies Inc.
Mechanical & Electrical Building Solutions
825 M Street, Suite 200 | Lincoln, NE 68508
P 402.476.1273 | F 402.476.1274
4559 South 133rd Street | Omaha, NE 68137
P 402.330.2772 | F 402.330.2630
ETI Project No: 2011-140

3/19/13
SHEET
M2.2A
ATTACHMENT NO.
1
NJS

SCALE: 1/8" = 1'-0"

ADDENDUM # 2

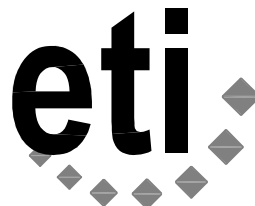


LEXINGTON MIDDLE
 SCHOOL AND CRF
 SECOND FLOOR 'A' MECHANICAL



SCALE: 1/8" = 1'-0"

ADDENDUM # 2



Engineering Technologies Inc.
 Mechanical & Electrical Building Solutions

825 M Street, Suite 200 | Lincoln, NE 68508
 P 402.476.1273 | F 402.476.1274

4559 South 133rd Street | Omaha, NE 68137
 P 402.330.2772 | F 402.330.2630

ETI Project No: 2011-140

3/19/13

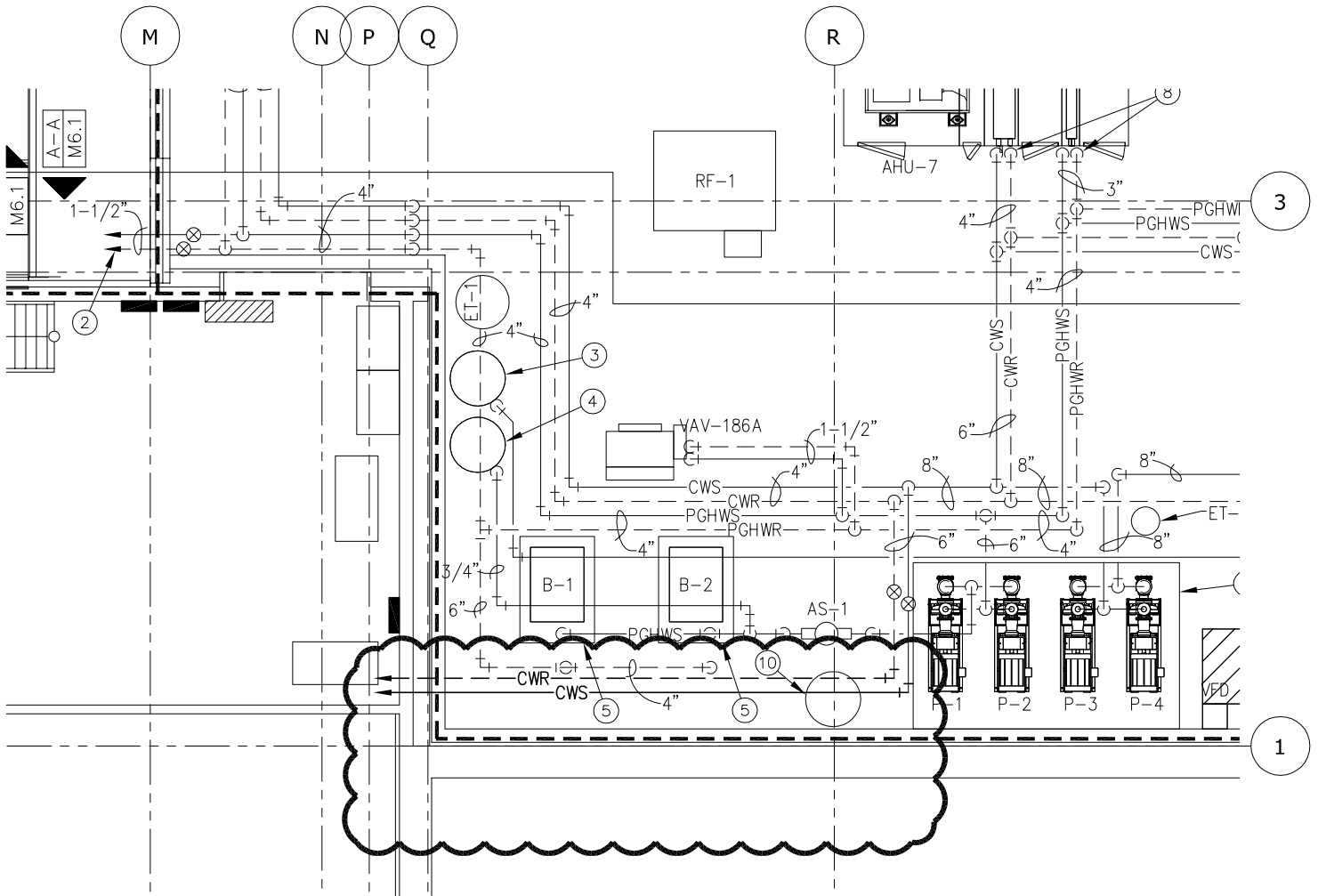
SHEET

M2.2A

ATTACHMENT NO.

2

NJS

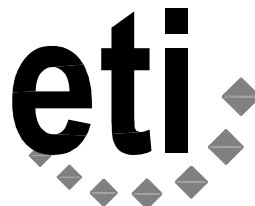


LEXINGTON MIDDLE
SCHOOL AND CRF
SECOND FLOOR 'C' MECHANICAL



SCALE: 1/8" = 1'-0"

ADDENDUM # 2



Engineering Technologies Inc.
Mechanical & Electrical Building Solutions

825 M Street, Suite 200 | Lincoln, NE 68508
P 402.476.1273 | F 402.476.1274

4559 South 133rd Street | Omaha, NE 68137
P 402.330.2772 | F 402.330.2630

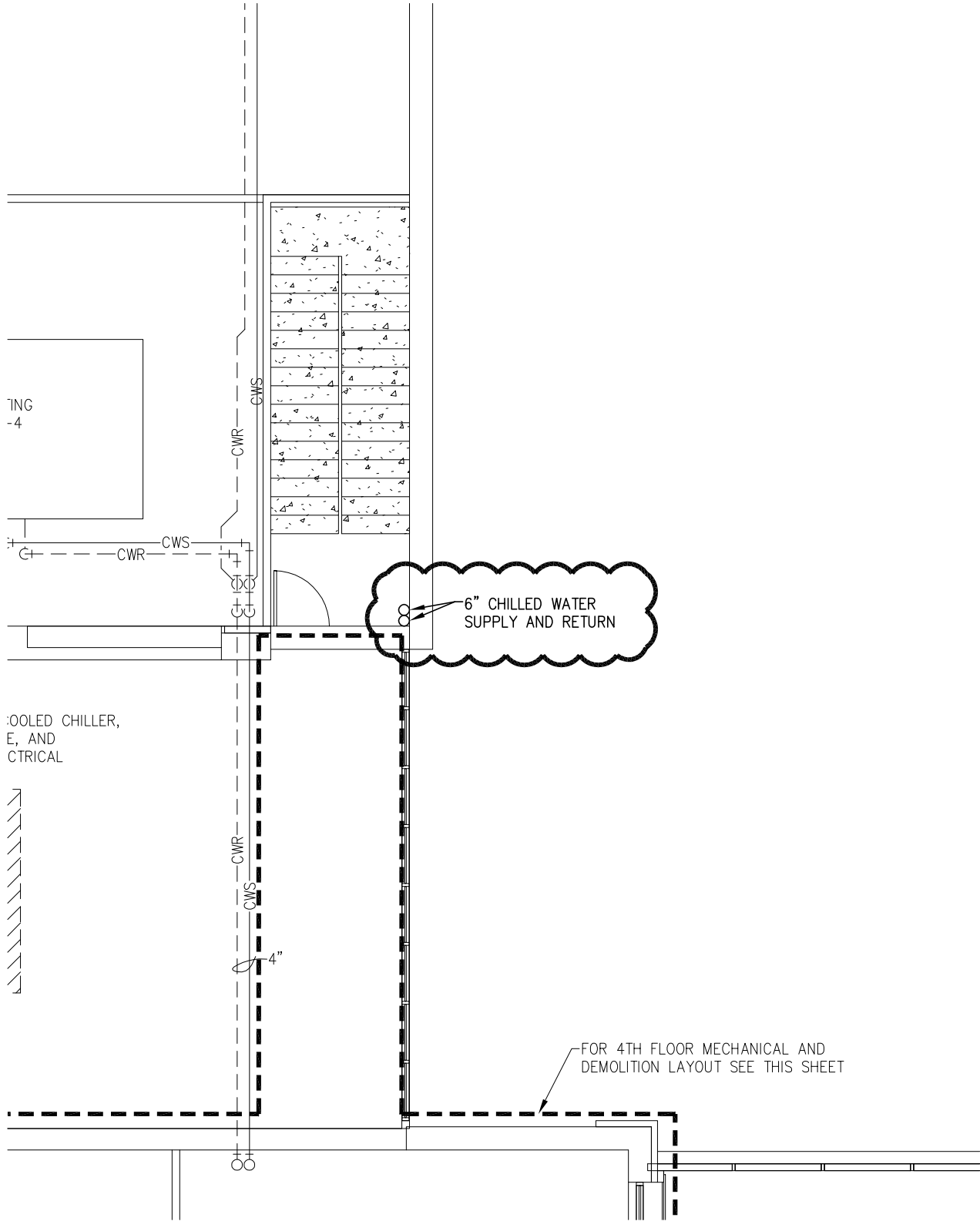
ETI Project No: 2011-140

3/19/13

SHEET
M2.2C
ATTACHMENT NO.

1

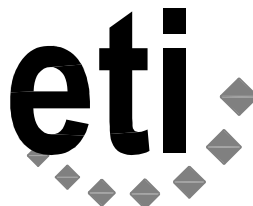
NJS



LEXINGTON MIDDLE SCHOOL AND CRF
 THIRD FLOOR 'A' MECHANICAL

SCALE: 1/8" = 1'-0"

ADDENDUM # 2



Engineering Technologies Inc.
 Mechanical & Electrical Building Solutions

825 M Street, Suite 200 | Lincoln, NE 68508
 P 402.476.1273 | F 402.476.1274

4559 South 133rd Street | Omaha, NE 68137
 P 402.330.2772 | F 402.330.2630

ETI Project No: 2011-140

3/19/13

SHEET

M2.3A

ATTACHMENT NO.

1

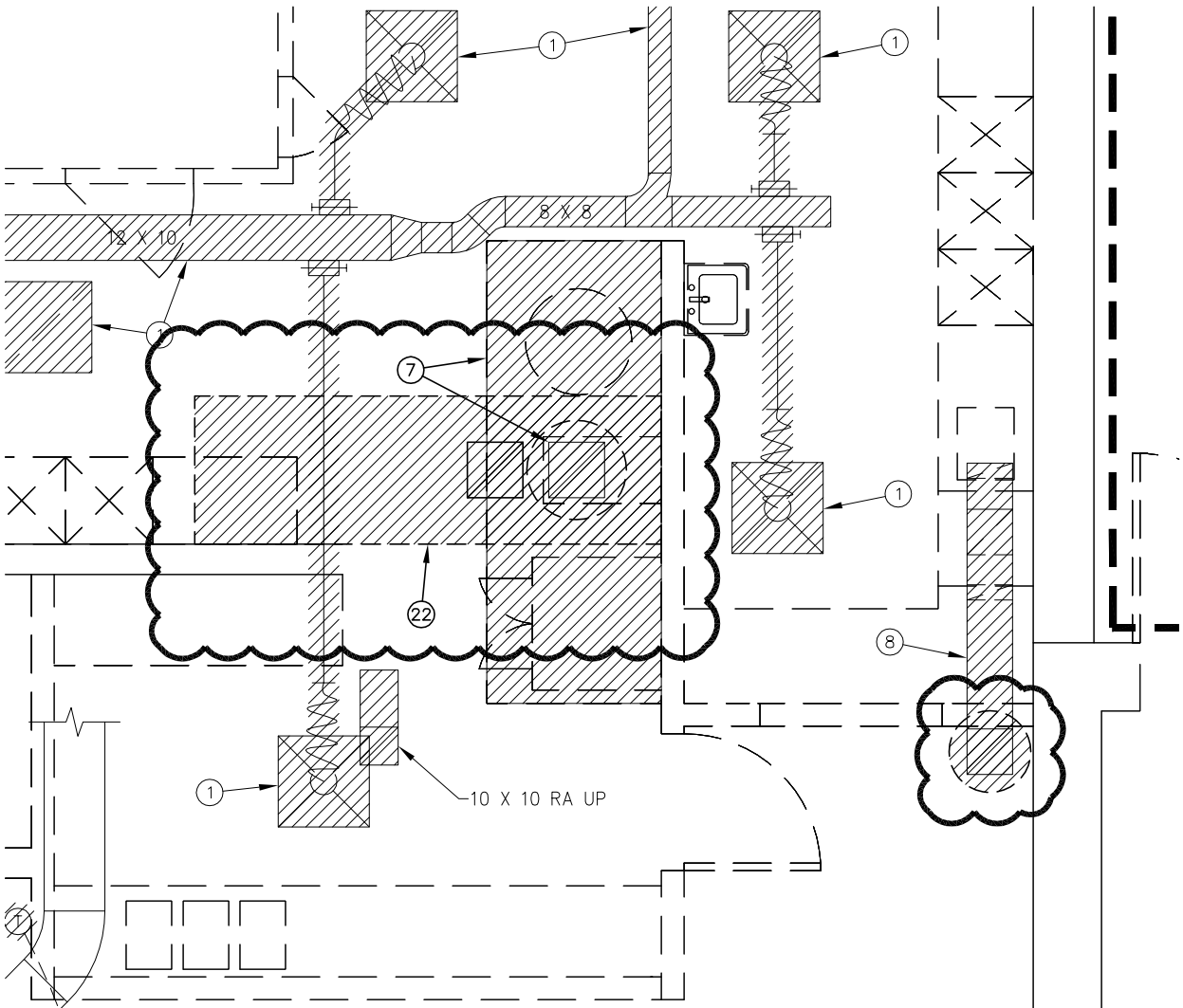
NJS

GENERAL NOTES

- A. RETURN KITCHEN HOOD, FIRE SUPPRESSION SYSTEM, EXHAUST FANS, MAKE-UP AIR UNIT AND CEILING UNIT HEATER BACK TO OWNER.

Ⓝ SHEET NOTES

- 22. REMOVE EXISTING MAKE UP AIR UNIT, FRESH AIR DUCT, GAS PIPING AND ALL ASSOCIATED HARDWARE.

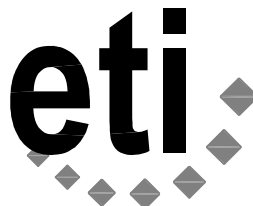


LEXINGTON MIDDLE
SCHOOL AND CRF
FIRST FLOOR 'A' KITCHEN DEMO



SCALE: 1/4" = 1'-0"

ADDENDUM # 2



Engineering Technologies Inc.
Mechanical & Electrical Building Solutions

825 M Street, Suite 200 | Lincoln, NE 68508
P 402.476.1273 | F 402.476.1274

4559 South 133rd Street | Omaha, NE 68137
P 402.330.2772 | F 402.330.2630

ETI Project No: 2011-140

3/19/13

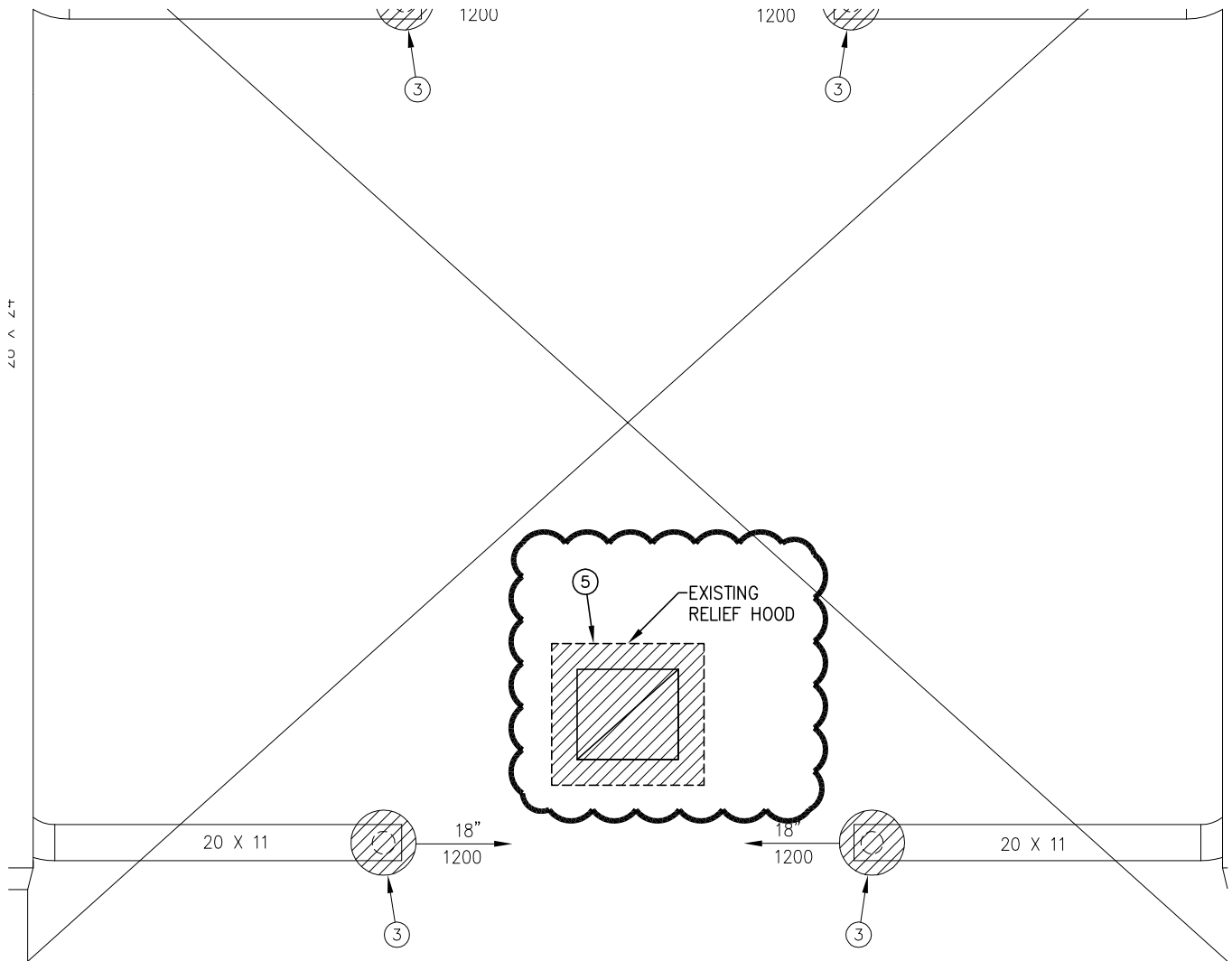
SHEET

M3.1A

ATTACHMENT NO.

1

NJS



GYMNASIUM
186A

SHEET NOTES

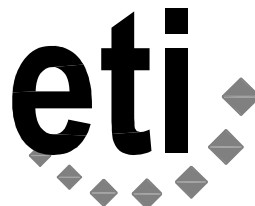
5. REMOVE EXISTING RELIEF HOOD, DAMPER, DRIP PAN, ASSOCIATED HARDWARE AND CONTROLS.

LEXINGTON MIDDLE
SCHOOL AND CRF
SECOND FLOOR 'A' HVAC DEMO



SCALE: 1/8" = 1'-0"

ADDENDUM # 2



Engineering Technologies Inc.
Mechanical & Electrical Building Solutions

825 M Street, Suite 200 | Lincoln, NE 68508
P 402.476.1273 | F 402.476.1274

4559 South 133rd Street | Omaha, NE 68137
P 402.330.2772 | F 402.330.2630

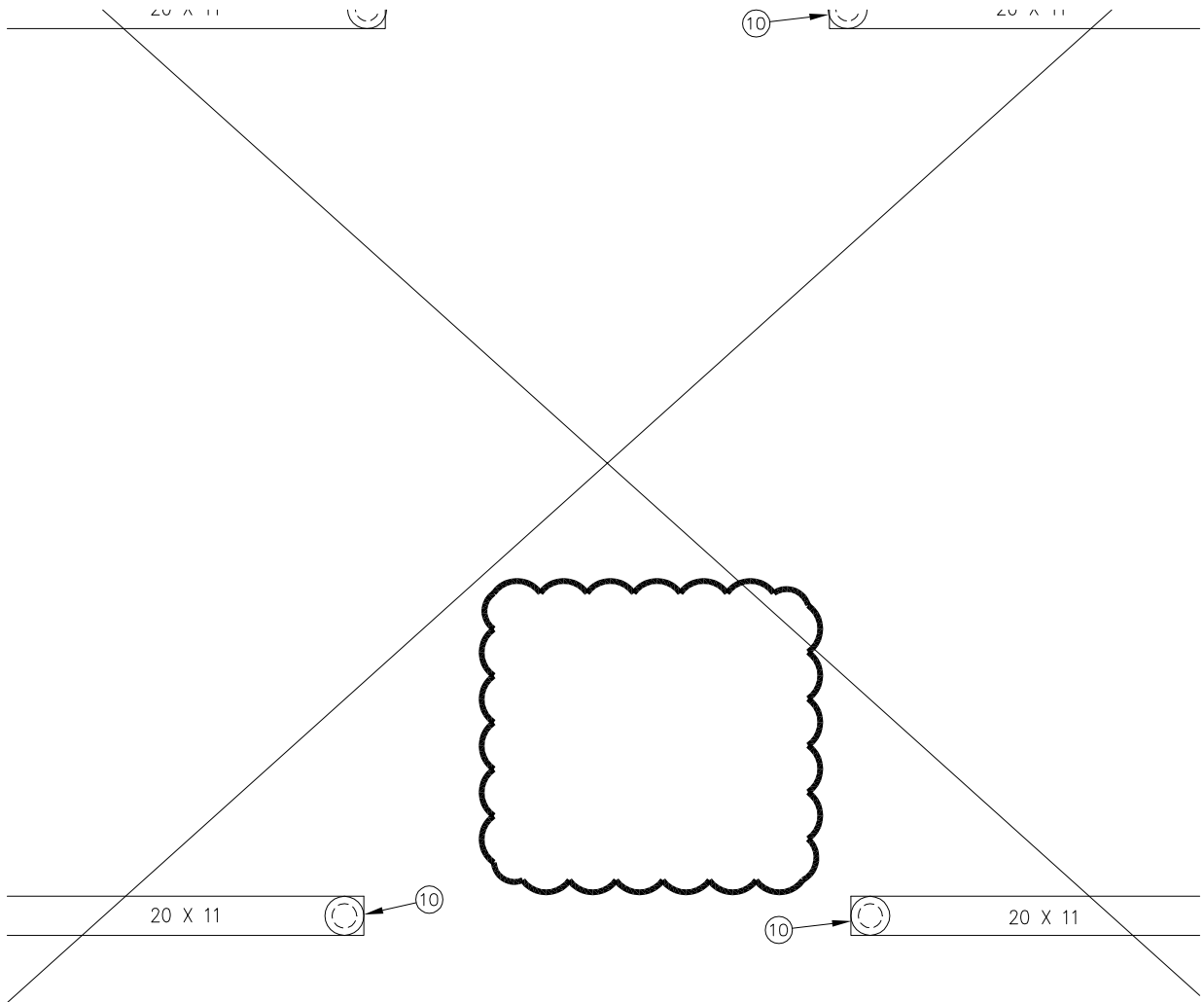
ETI Project No: 2011-140

3/19/13

SHEET
M3.2A
ATTACHMENT NO.

1

NJS



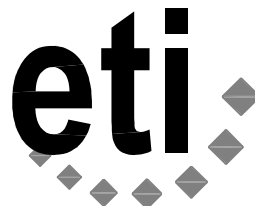
GYMNASIUM
186A

LEXINGTON MIDDLE
SCHOOL AND CRF
SECOND FLOOR 'A' HVAC



SCALE: 1/8" = 1'-0"

ADDENDUM # 2



Engineering Technologies Inc.
Mechanical & Electrical Building Solutions

825 M Street, Suite 200 | Lincoln, NE 68508
P 402.476.1273 | F 402.476.1274

4559 South 133rd Street | Omaha, NE 68137
P 402.330.2772 | F 402.330.2630

ETI Project No: 2011-140

3/19/13

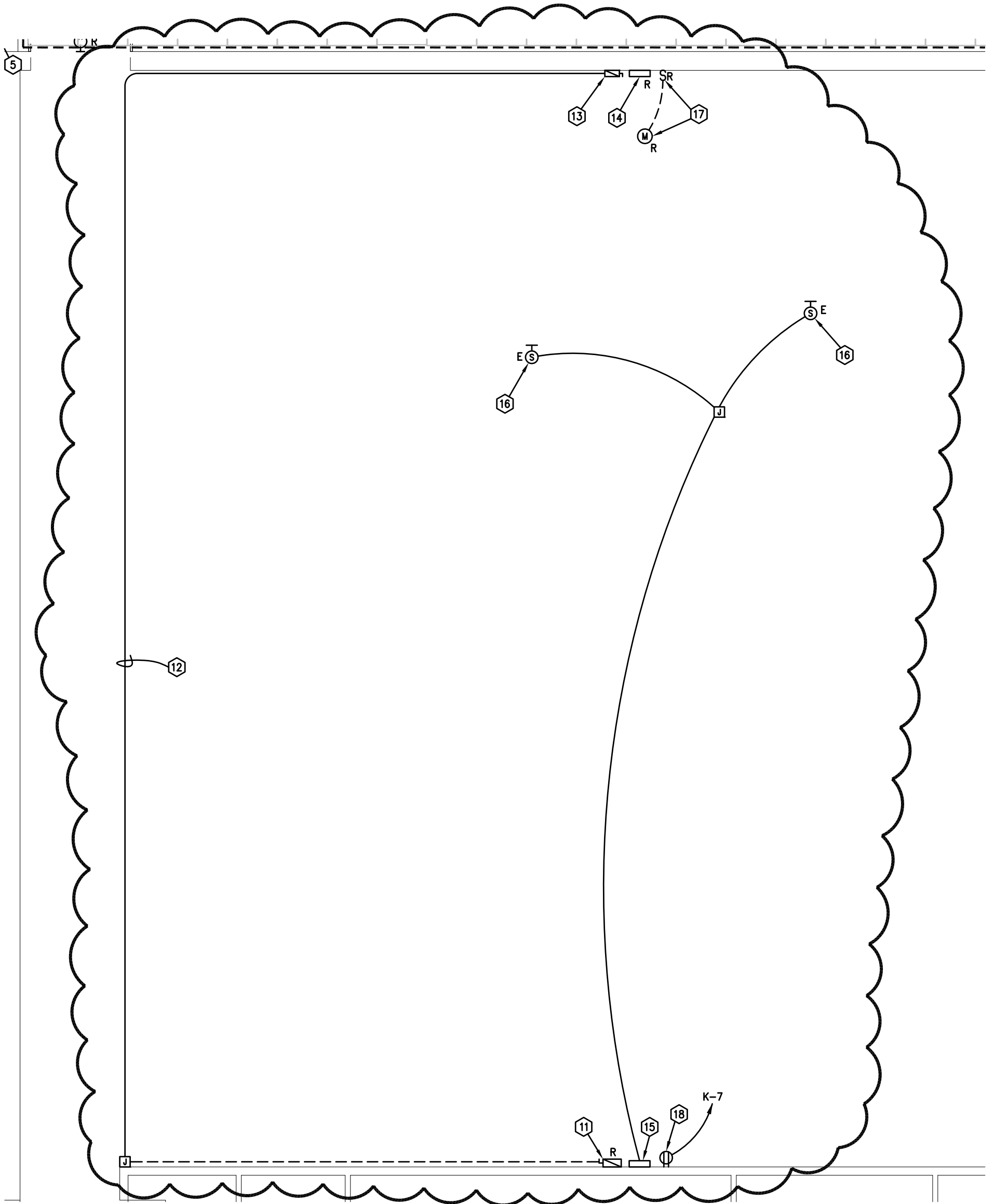
SHEET

M3.2A

ATTACHMENT NO.

2

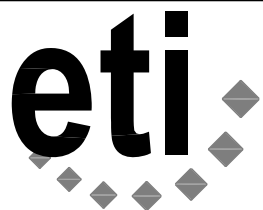
NJS



SHEET NOTES

11. MOTORIZED BLEACHERS TO BE RELOCATED TO NORTH WALL. REMOVE 30A DISCONNECT AND CONDUIT BACK TO ENTRY. EXTEND CIRCUIT TO NORTH WALL AND DOWN TO RELOCATED DISCONNECT SWITCH. RECONNECT BLEACHERS TO DISCONNECT.
12. RUN CONDUIT UP AT CEILING LEVEL THEN DOWN TO RELOCATED DISCONNECT. CONDUCTORS SHALL BE #8. PAINT CONDUIT TO MATCH EXISTING CEILING AND WALL FINISH.
13. RELOCATED BLEACHERS DISCONNECT.
14. RELOCATE TWO SPEAKER JACKS TO SOUTH WALL. EXTEND CONDUCTORS AS REQUIRED. FIELD VERIFY.
15. RELOCATED SPEAKER JACKS LOCATION.
16. EXISTING SPEAKER LOCATION (APPROX.).
17. REMOVE POWER CIRCUIT TO DIVIDER CURTAIN BACK TO SOURCE.
18. PROVIDE NEW RECEPTACLE AND EXTEND #10 TO NEW PANEL "K", SEE SHEET E3.1A FOR LOCATION. PAINT CONDUIT WHERE EXPOSED.

LEXINGTON MIDDLE SCHOOL
FIRST FLOOR PLAN - AREA A - DEMOLITION

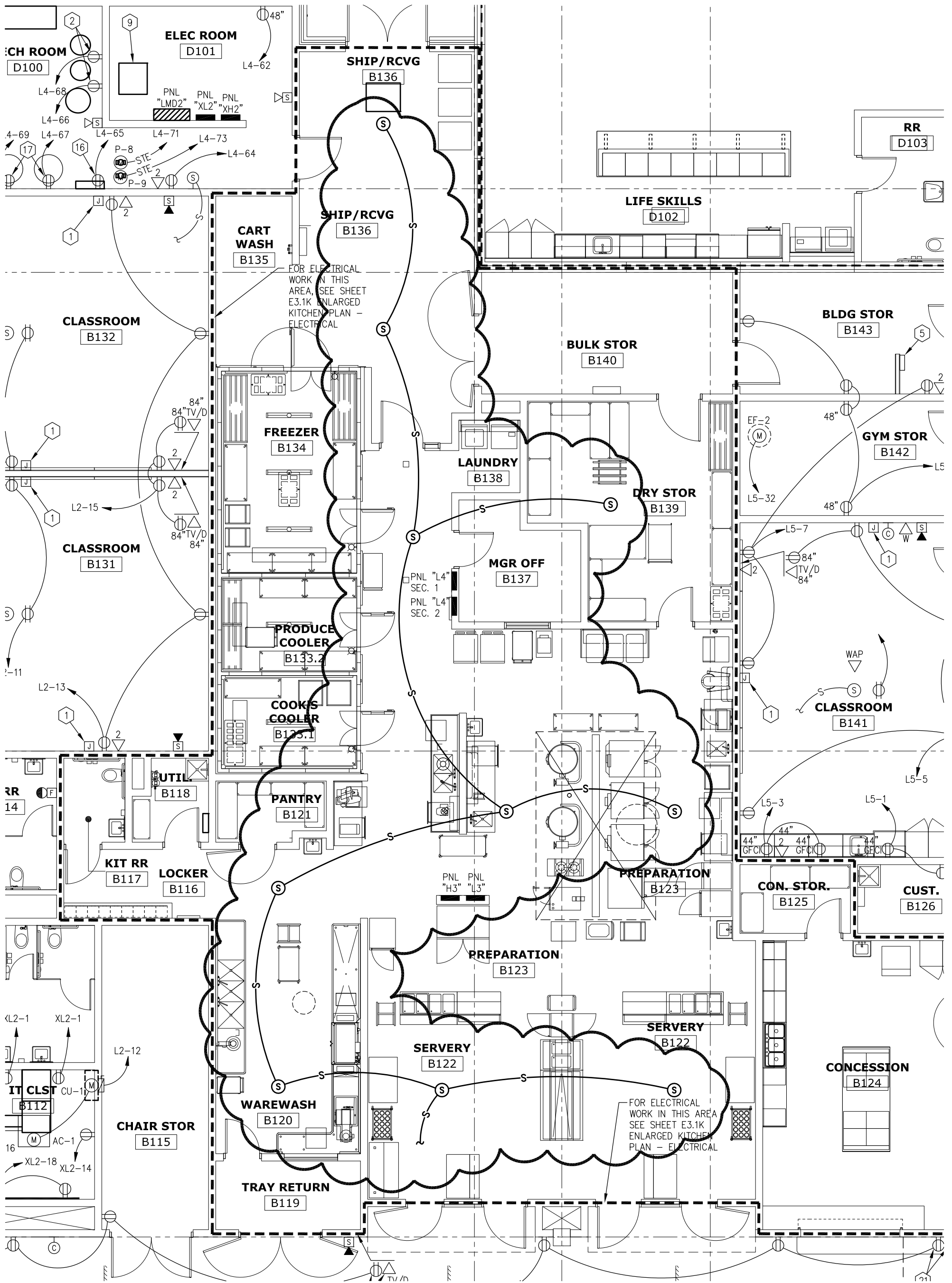


Engineering Technologies Inc.
Mechanical & Electrical Building Solutions
825 M Street, Suite 200 | Lincoln, NE 68508
P 402.476.1273 | F 402.476.1274
4559 South 133rd Street | Omaha, NE 68137
P 402.330.2772 | F 402.330.2630
ETI Project No: (2011-140)

03/19/13
SHEET E1.1A
ATTACHMENT NO. 1
BJF

SCALE: 1/8" = 1'-0"

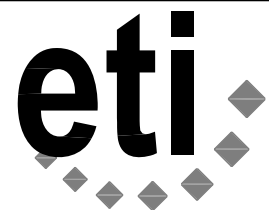
ADDENDUM #2



LEXINGTON MIDDLE SCHOOL AND YMCA
 ADDITION
 FIRST FLOOR PLAN - AREA B - ELECTRICAL

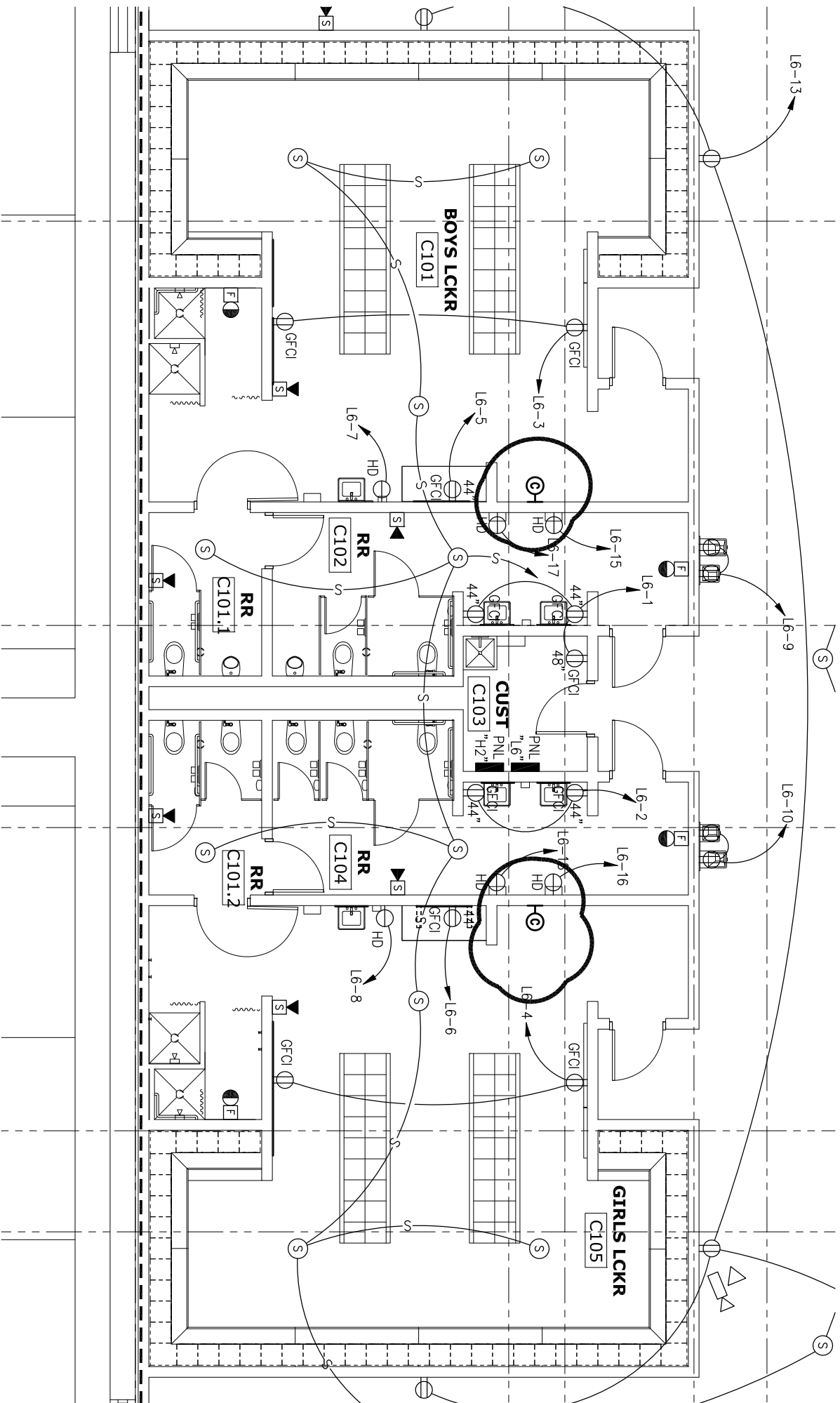
SCALE: 1/8" = 1'-0"

ADDENDUM #2



Engineering Technologies Inc.
 Mechanical & Electrical Building Solutions
 825 M Street, Suite 200 | Lincoln, NE 68508
 P 402.476.1273 | F 402.476.1274
 4559 South 133rd Street | Omaha, NE 68137
 P 402.330.2772 | F 402.330.2630
 ETI Project No: (2011-140)

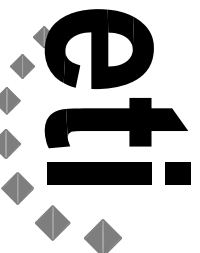
03/19/13
SHEET E3.1B
ATTACHMENT NO. 1
BJF



**LEXINGTON MIDDLE SCHOOL AND YMCA
ADDITION
FIRST FLOOR PLAN - AREA C - ELECTRICAL**

SCALE: 1/8" = 1'-0"

APPENDUM #2



Engineering Technologies Inc.
Mechanical & Electrical Building Solutions

825 M Street, Suite 200 | Lincoln, NE 68508
P 402.476.1273 | F 402.476.1274
4559 South 133rd Street | Omaha, NE 68137
P 402.330.2772 | F 402.330.2630
ETI Project No: (2011-140)

03/19/13

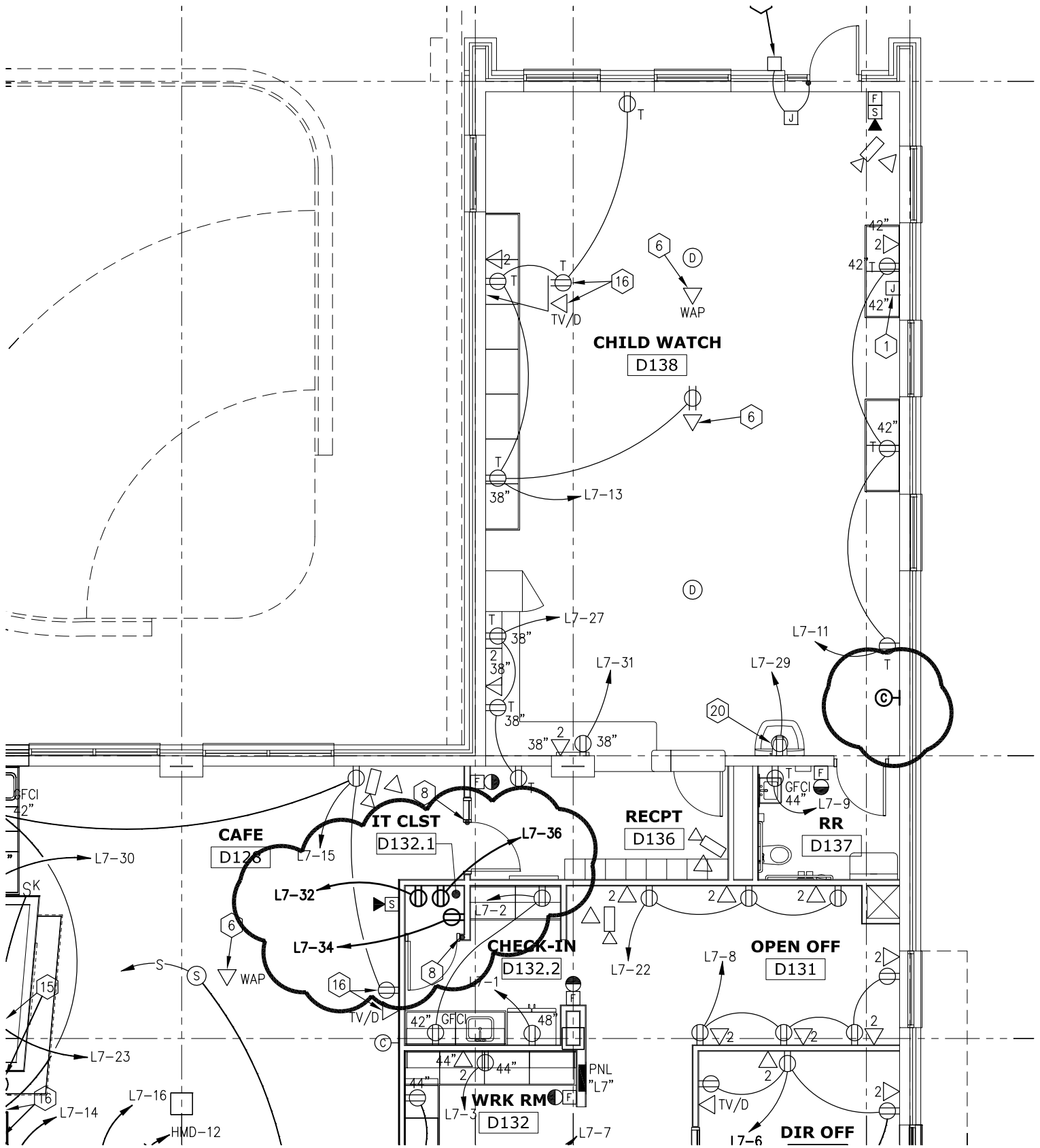
SHEET

E3.1C

ATTACHMENT NO.

1

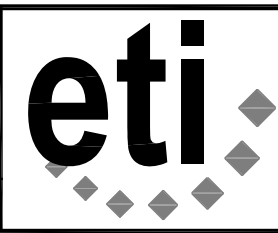
B.J.F.



LEXINGTON MIDDLE SCHOOL
 AND YMCA ADDITION
 FIRST FLOOR - AREA D - ELECT.

SCALE: 1/8" = 1'-0"

ADDENDUM #2



Engineering Technologies Inc.
 Mechanical & Electrical Building Solutions

825 M Street, Suite 200 | Lincoln, NE 68508
 P 402.476.1273 | F 402.476.1274

4559 South 133rd Street | Omaha, NE 68137
 P 402.330.2772 | F 402.330.2630

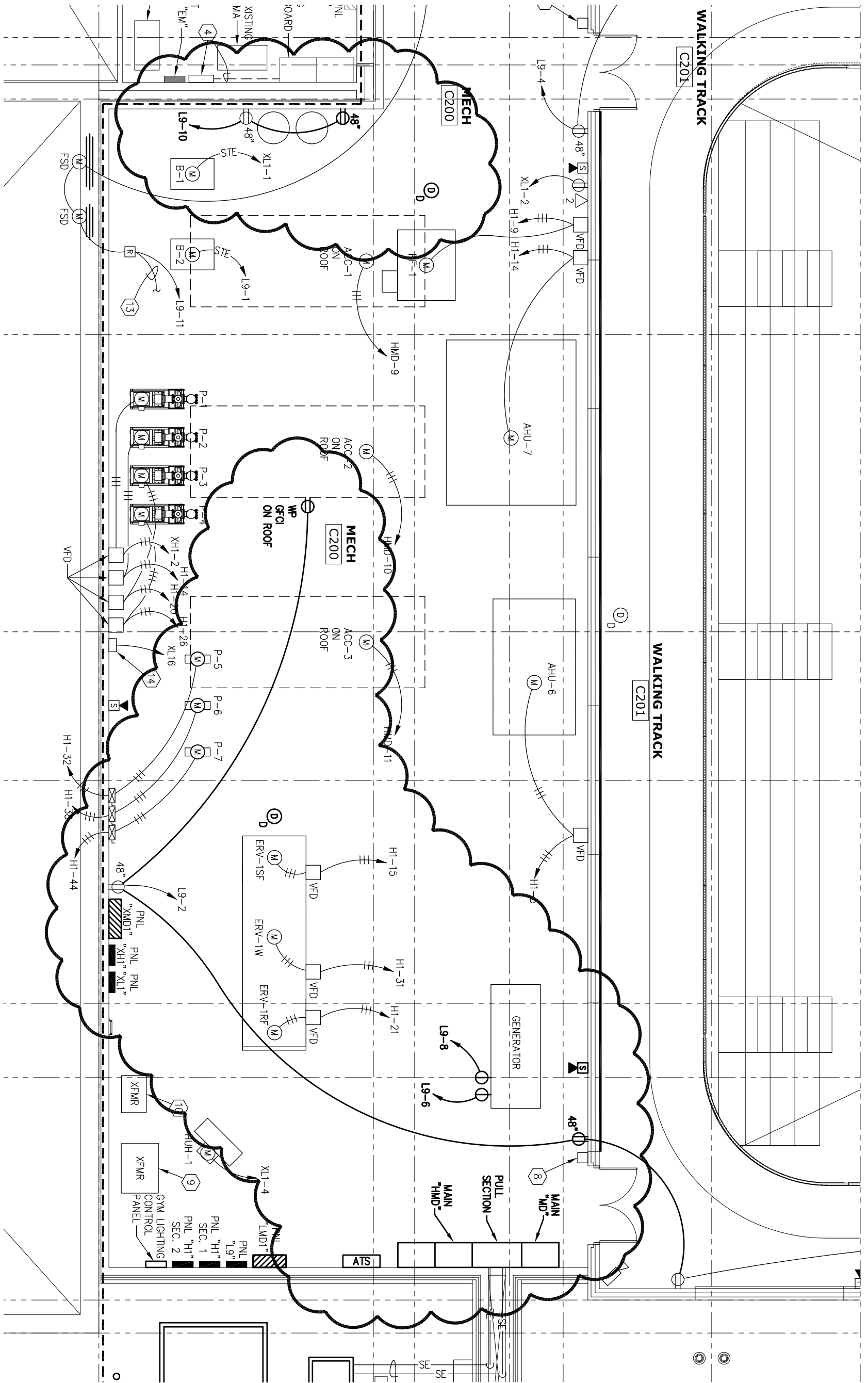
ETI Project No: (2011-140)

03/19/13

SHEET
E3.1D

ATTACHMENT NO.
 1

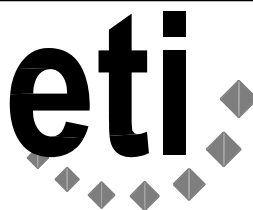
BJF



LEXINGTON MIDDLE SCHOOL AND YMCA
 ADDITION
 SECOND FLOOR PLAN - AREA C - ELECTRICAL

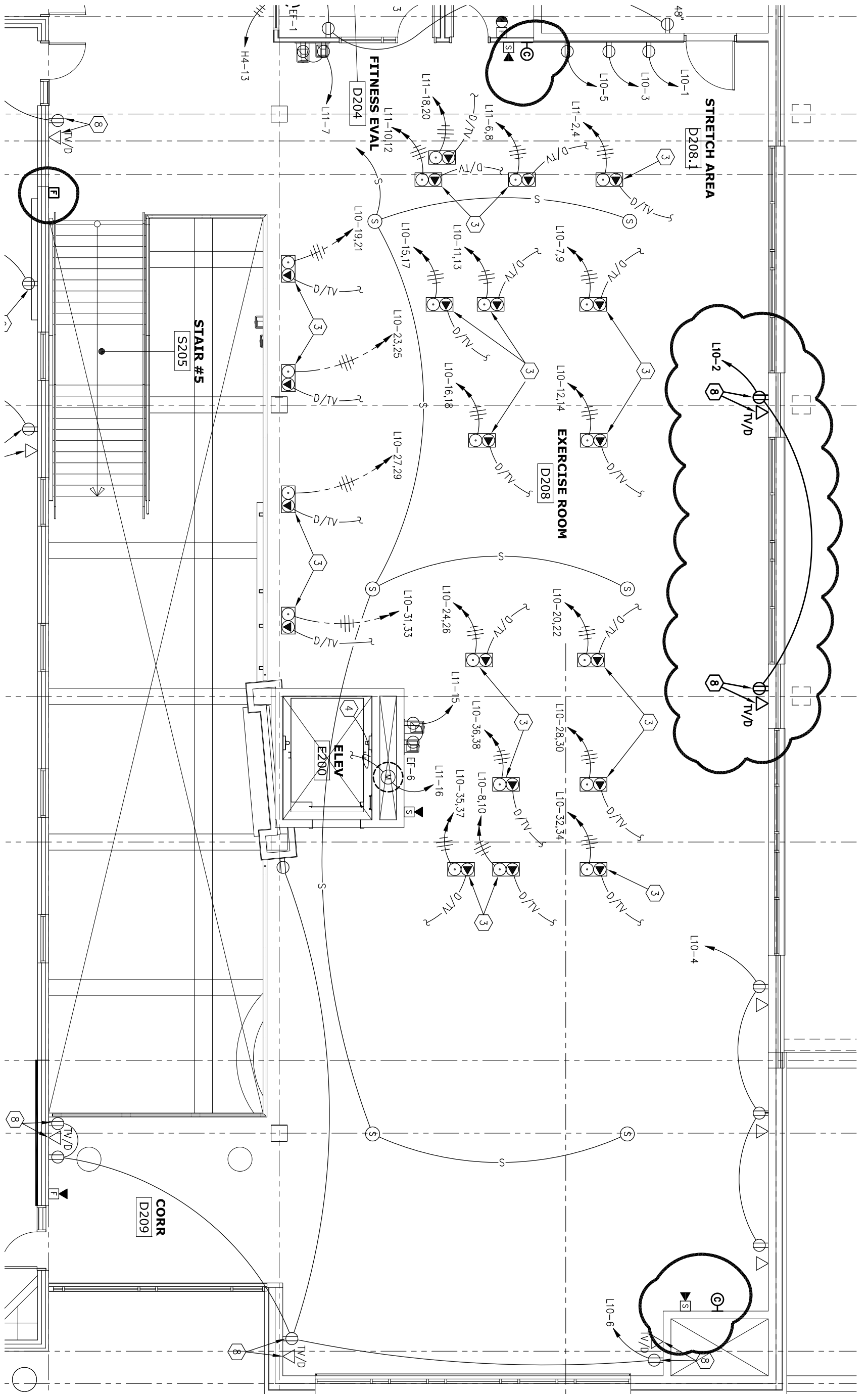
SCALE: 1/8" = 1'-0"

ADDENDUM #2



Engineering Technologies Inc.
 Mechanical & Electrical Building Solutions
 825 M Street, Suite 200 | Lincoln, NE 68508
 P 402.476.1273 | F 402.476.1274
 4559 South 133rd Street | Omaha, NE 68137
 P 402.330.2772 | F 402.330.2630
 ETI Project No: (2011-140)

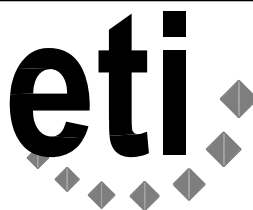
03/19/13
SHEET
E3.2C
ATTACHMENT NO.
1
BJF



LEXINGTON MIDDLE SCHOOL AND YMCA
 ADDITION
 SECOND FLOOR PLAN - AREA D - ELECTRICAL

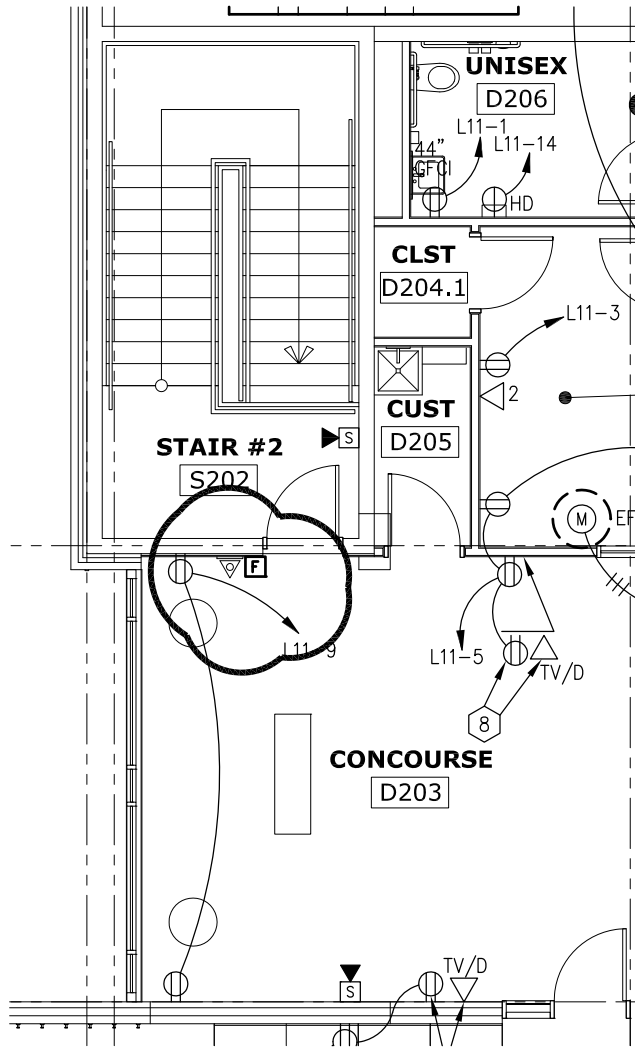
SCALE: 1/8" = 1'-0"

ADDENDUM #2



Engineering Technologies Inc.
 Mechanical & Electrical Building Solutions
 825 M Street, Suite 200 | Lincoln, NE 68508
 P 402.476.1273 | F 402.476.1274
 4559 South 133rd Street | Omaha, NE 68137
 P 402.330.2772 | F 402.330.2630
 ETI Project No: (2011-140)

03/19/13
SHEET E3.2D
ATTACHMENT NO. 1
BJF



LEXINGTON MIDDLE SCHOOL 
 AND YMCA ADDITION
 SECOND FLOOR AREA D ELECT.

SCALE: 1/8" = 1'-0"

ADDENDUM #2



Engineering Technologies Inc.
 Mechanical & Electrical Building Solutions

825 M Street, Suite 200 | Lincoln, NE 68508
 P 402.476.1273 | F 402.476.1274

4559 South 133rd Street | Omaha, NE 68137
 P 402.330.2772 | F 402.330.2630

ETI Project No: (2011-140)

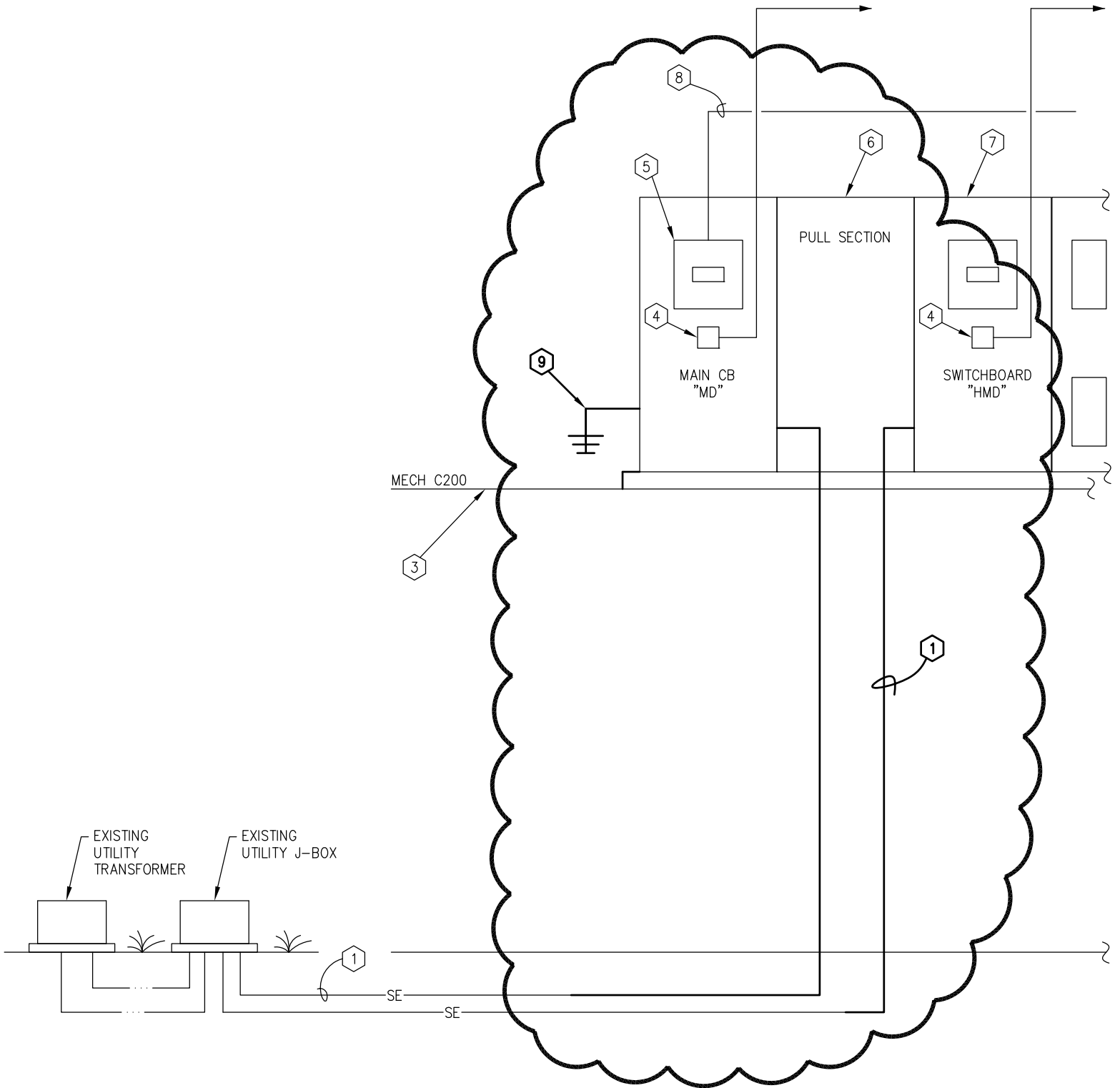
03/19/13

SHEET
E3.2D

ATTACHMENT NO.

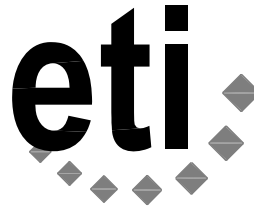
2

BJF



**LEXINGTON MIDDLE SCHOOL
AND YMCA ADDITION
NEW ELECTRICAL RISER**

NO SCALE ADDENDUM #2



Engineering Technologies Inc.
Mechanical & Electrical Building Solutions

825 M Street, Suite 200 | Lincoln, NE 68508
P 402.476.1273 | F 402.476.1274
4559 South 133rd Street | Omaha, NE 68137
P 402.330.2772 | F 402.330.2630
ETI Project No: (2011-140)

03/19/13
SHEET E6.1
ATTACHMENT NO. 1
BJF