

**Sampson Construction Co., Inc.**  
**3730 South 14<sup>th</sup> Street**  
**Lincoln, NE 68502**  
**Phone: (402) 434-5450**  
**FAX: (402) 434-5466**

**Bid Bulletin #02**

PROJECT: Ashland Community Resource Center  
Ashland, NE

DATE: February 8, 2013

This Bid Bulletin includes items 1-1 through 1-1. Each item shall be fully incorporated into the Bidding/Contract Documents and have the same force and effect as though originally included. Bidders shall acknowledge receipt of this Bid Bulletin on the bid form.

Item 1-1 Attached is Addendum #2 dated 2/8/13 from The Clark Enersen Partners.

END OF BID BULLETIN #02

663-003-10

## ADDENDUM NO. 2

The Architect/ Engineer issues this addendum, applicable to the above named project, to all known Contractors before receipt of proposal.

This addendum includes Item Number 2-1 thru 2-18. This addendum item shall be fully incorporated into the Bidding/Contract Documents and have the same force and effect as though originally included.

The Bidder shall acknowledge receipt of this Addendum No. 2 on the Bid Proposal Form in the place provided.

### LANDSCAPE

#### Specifications:

**Item 2-1: Section 329300 – FURNISHING AND PLANTING OF PLANT MATERIALS**

- Refer to Section 3.1 PREPARATION, Paragraph F which reads:  
F. Place new topsoil in all planting beds to a depth of 12 inches prior to planting.  
Shall be revised to read:  
F. Place new topsoil in all planting beds to a depth of 24 inches prior to planting.

#### Drawings

**Item 2-2: Refer to Sheet L2.01 – Site Layout Plan**

Concrete Paver Schedule and Site Layout Plans have been revised. See revised Sheet L2.01 for additional details.

**Item 2-3: Refer to Sheet L2.02 – Site Details**

Detail 8 has been revised. See SDL-002 for additional details.

**Item 2-4: Refer to Sheet L3.01 – Site Grading Plan**

Site Grading Plan has been revised. See revised Sheet L3.01 for additional details.

### ARCHITECTURAL

#### Specifications:

**Item 2-5: Section 071326 – SELF-ADHERING SHEET WATERPROOFING**

- Refer to Section 2.1 MANUFACTURERS, Paragraph A. Based on performance specs & subject to terms and conditions of the specifications, the following is an approved sheet waterproofing manufacturer:

Henry: Blueskin WP 200

663-003-10

**Item 2-6: Section 072726 – FLUID-APPLIED MEMBRANE AIR BARRIERS**

- Refer to Section 2.1 MANUFACTURERS, Paragraph A. Subject to terms and conditions of the specifications, the following is an approved manufacturer:

TK Products: TK-AIRMAX 2104 Vapor Permeable System

**Item 2-7: Section 072726 – FLUID-APPLIED MEMBRANE AIR BARRIERS**

- Refer to Section 2.1 MANUFACTURERS, Paragraph A. Subject to terms and conditions of the specifications, the following is an approved manufacturer:

BASF: Enershield – HP Vapor Permeable Air/Water-Resistive Barrier Membrane

**Item 2-8: Section 075300 – SINGLE PLY MEMBRANE ROOFING**

- Refer to Section 2.2 EPDM MEMBRANE, Paragraph B. Subject to terms and conditions of the specifications, the following is an approved EPDM Membrane Manufacturer:

Johns Manville Inc. JM EPDM NR 60 mil Milan, Ohio

**Item 2-9: Section 084113 – ALUMINUM ENTRANCES AND STOREFRONTS**

- Refer to Section 2.1 MANUFACTURERS, Paragraph A. Subject to terms and conditions of the specifications, the following is an approved aluminum storefront system:

Tubelite T14000 Series Storefront System

**Item 2-10: Section 084113 – ALUMINUM ENTRANCES AND STOREFRONTS**

- Refer to Section 2.1 MANUFACTURERS, Paragraph A. Subject to terms and conditions of the specifications, the following is an approved flush aluminum door manufacturer:

CDS A200 Flush Aluminum Door System

**Item 2-11: Section 102239 – FOLDING PANEL PARTITIONS**

- Refer to Section 2.1 ACCEPTABLE MANUFACTURERS, Paragraph B. Subject to terms and conditions of the specifications, the following is an approved folding panel partition system:

Panelfold: Moduflex Series 400 Paired Panels Model 420

663-003-10

**Drawings:**

**Item 2-12: Refer to Sheet A6.09 – Door Schedule, Door Types & Aluminum Frame Types**

Refer to Frames: AL-101, AL-102, AL-112, AL-113, AL-114, AL-115; revised as shown in SDA-001.

**MECHANICAL**

**Specifications:**

**Item 2-13: Section 211313 – Fire Protection System**

The static pressure and flow data at 13<sup>th</sup> & Silver is 67 PSI with 1,000 GPM recorded flow. The residual pressure is not known at this time and will need to be verified by the fire sprinkler contractor to complete the Hydronic Calculations.

**Item 2-14: Section 221000 – Plumbing Piping**

Para 2.6.A.3, Install cast iron hubless piping per the CISPI Handbook installation guidelines.

**Item 2-15: Section 230901 – Instruments and Control Elements**

The B&G Ultra Setter is pre-approved pressure independent control valve.

**Item 2-16: Section 230902 – Variable Frequency Drives**

Eaton Cutler-Hammer is a pre-approved VFD manufacturer.

**Drawings:**

**Item 2- 17 Refer to Sheet M6.01 – Diffuser, Register, and Grille Schedule**

D-2 shall be a Titus TMR steel circular diffuser or equivalent.

D-1 shall be a Titus Omni – NT steel grille.

663-003-10

## **ELECTRICAL**

### **Drawings**

#### **Item 2-18: E3.01 – Electrical One Line Diagram and Details**

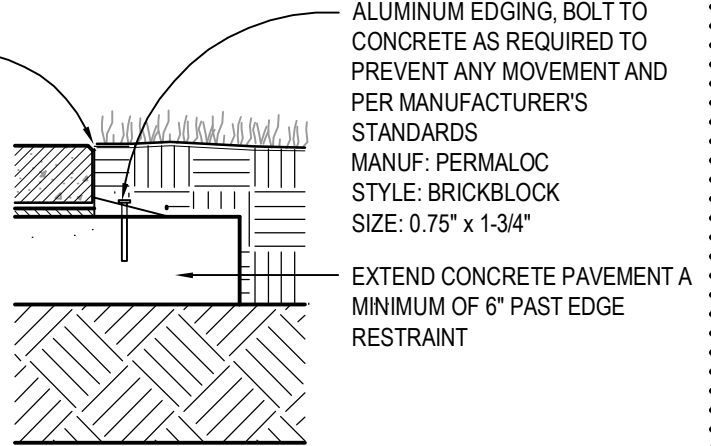
Refer to the Light Fixture Schedule. The following lighting fixtures have been reviewed in accordance with Project Specification, and are included in the Contract Documents for bidding purposes. All fixtures, lamps, and ballasts are required to meet the specification requirements regardless of prior approval. Prior approval does not waive any requirements indicated on the drawings or the specifications. Some fluorescent fixtures require dimming or multiple levels of switching. The required number and types of ballasts shall be provided to meet the switching requirements shown on the drawings.

<u>Type</u>	<u>Manufacturer and Catalog Number</u>
L	Prescolite LF6SQLED8-6SQLED835K-B24
M	Kenall AUCLED-I-MW-11L35K-24-120-SW-MOD-1.7"THICK-OCC
Q	Finelite S16WM-DCO-4'-2T8-SC-91W-120-FE-.88PS-DC-SILVER
U	Prescolite LF6SQLED8-6SQLED835K-B24

END OF ADDENDUM NO. 2

A  
002

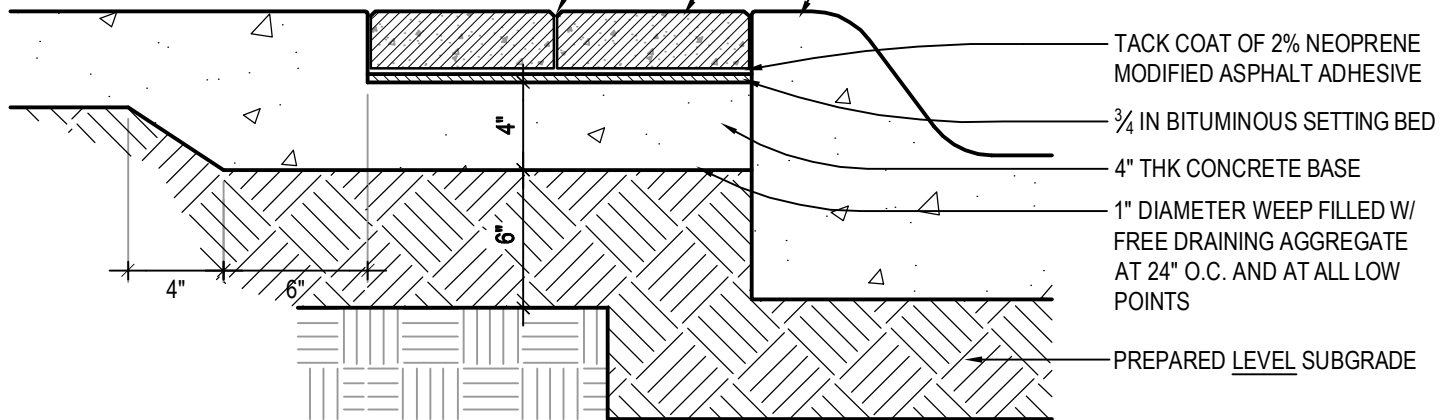
NOTE:  
IN AREAS WHERE BRICK  
PAVERS ABUT PLANTING OR  
SOD AREAS USE ALUMINUM  
EDGING AS SHOWN IN DETAIL



NOTE:  
CONSTRUCTION OF NEW BRICK PAVING TO MATCH  
CONSTRUCTION OF EXISTING BRICK PAVER  
CONSTRUCTION. BRICK UNIT DETAIL IS BASED ON  
VISUAL INSPECTION OF THE EXISTING BRICK  
PAVING AND INFORMATION PROVIDED BY BRICK  
MANUFACTURER. DURING DEMOLITION  
CONTRACTOR TO VERIFY THE EXACT  
CONSTRUCTION OF THE EXISTING BRICK PAVERS  
AND REPORT FINDINGS TO LANDSCAPE  
ARCHITECT FOR FURTHER DIRECTION.

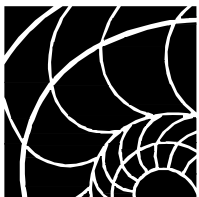
MATCH EXISTING JOINT MATERIAL

2<sup>3</sup>/<sub>8</sub>" BRICK PAVER, TYP  
CONCRETE CURB AND GUTTER,  
SEE LAYOUT PLANS FOR  
LOCATIONS



# 8 BRICK UNIT PAVEMENT

SCALE: 1 1/2"=1'-0"

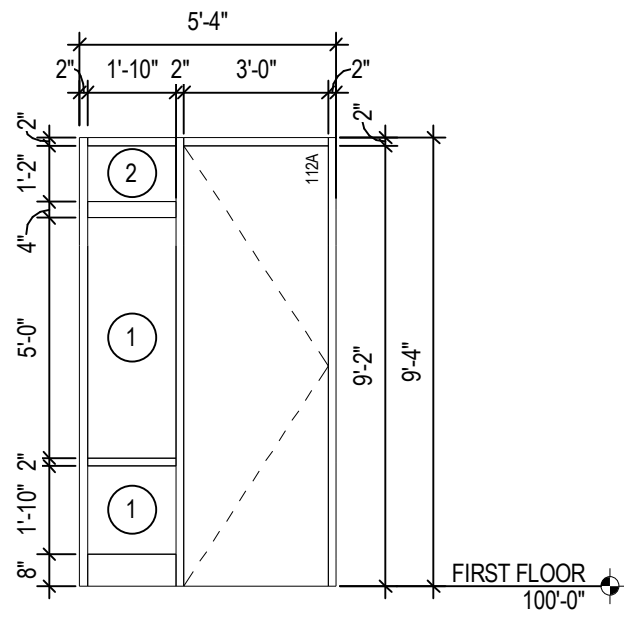


The  
Clark  
Enersen  
Partners

Architecture + Landscape Architecture + Engineering + Interiors  
1010 Lincoln Mall, Suite 200 Lincoln, NE 68508-2883  
402 477.9291 Fax 402 477.6542  
Kansas City, MO Fairway, KS www.clarkenersen.com

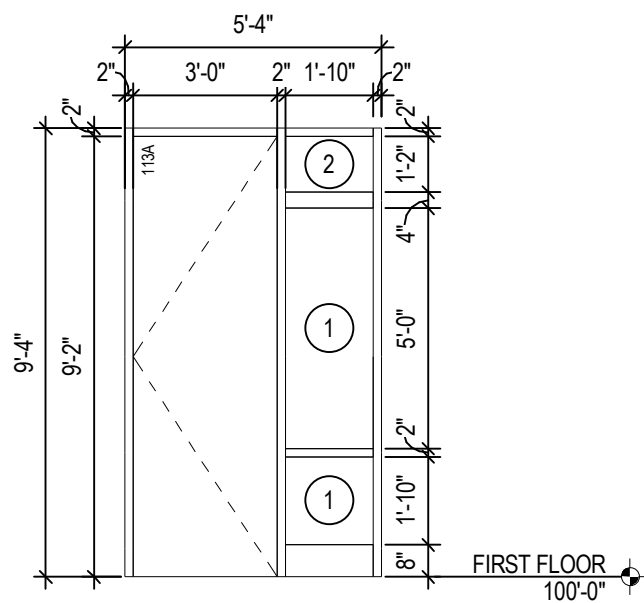
Ashland Community Resource Center  
Ashland, NE  
TCEP Project No.: 663-003-10

Addendum #02  
Supplemental Drawing: SDL-002  
Revision of Sheet: L2.02  
Date: February 8, 2013



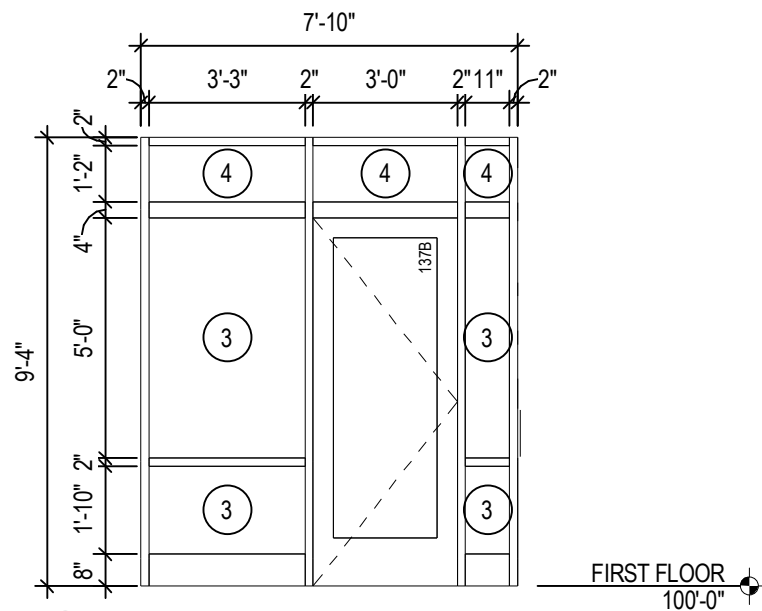
**AL-101**

SCALE: 1/4" = 1'-0"



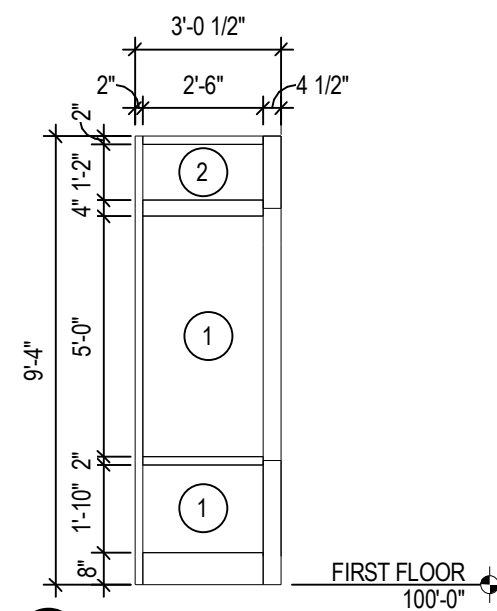
**AL-102**

SCALE: 1/4" = 1'-0"



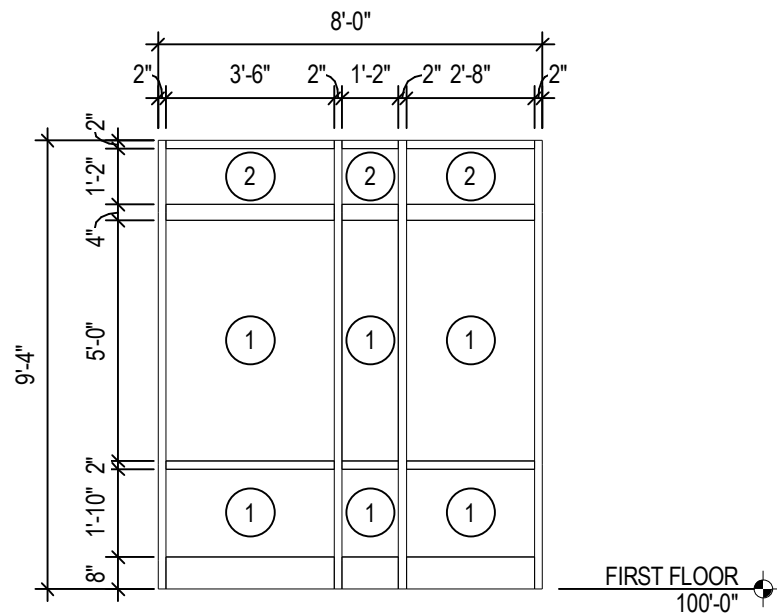
**AL-113**

SCALE: 1/4" = 1'-0"



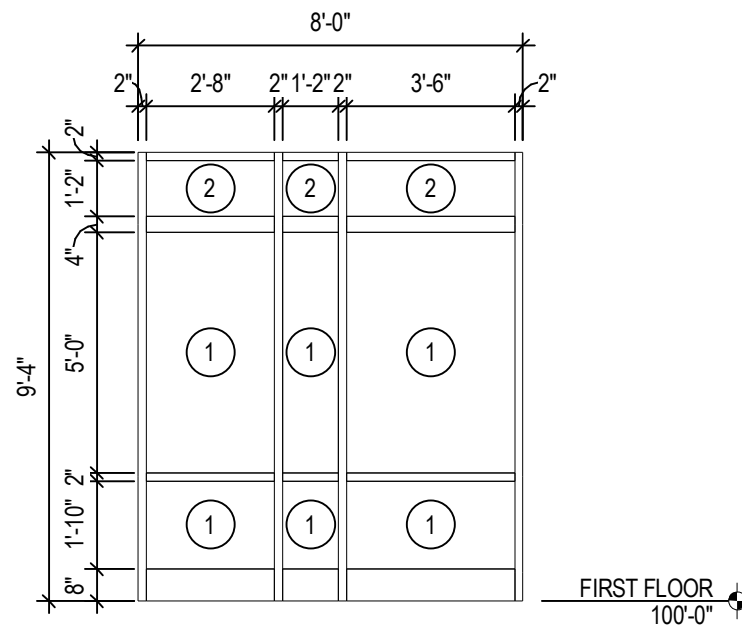
**AL-114**

SCALE: 1/4" = 1'-0"



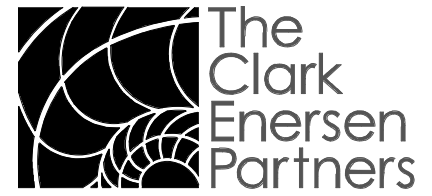
**AL-115**

SCALE: 1/4" = 1'-0"



**AL-116**

SCALE: 1/4" = 1'-0"



The Clark Enersen Partners  
 Architecture  
 Landscape Architecture  
 Engineering  
 Interiors

www.clarkenersen.com

Lincoln, Nebraska  
 1010 Lincoln Mall, Suite 200  
 Lincoln, NE 68508-2883  
 402.477.9291 Fax 402.477.6542

Kansas City, Missouri  
 Overland Park, Kansas

Ashland Community Resource Center  
 Project City and State  
 TCEP No.: 663-003-10

Addendum #02  
 Supplemental Drawing: SDA-001  
 Revision of Sheet: A.609  
 Date: 02/08/13



