

Sampson Construction Co., Inc.
3730 South 14th Street
Lincoln, NE 68502
Phone: (402) 434-5450
FAX: (402) 434-5466

Bid Bulletin #01

PROJECT: Ashland Community Resource Center
Ashland, NE

DATE: February 1, 2013

This Bid Bulletin includes items 1-1 through 1-2. Each item shall be fully incorporated into the Bidding/Contract Documents and have the same force and effect as though originally included. Bidders shall acknowledge receipt of this Bid Bulletin on the bid form.

Item 1-1 The bid date for this project is **Tuesday** February 19, 2013. The invitation to bid listed the bid date as Thursday February 19th.

Item 1-1 Attached is Addendum #1 dated 2/1/13 from The Clark Enersen Partners.

END OF BID BULLETIN #01

663-003-10

ADDENDUM NO. 1

The Architect/ Engineer issues this addendum, applicable to the above named project, to all known Contractors before receipt of proposal.

This addendum includes Item Number 1-1 thru 1-51. This addendum item shall be fully incorporated into the Bidding/Contract Documents and have the same force and effect as though originally included.

The Bidder shall acknowledge receipt of this Addendum No. 1 on the Bid Proposal Form in the place provided.

GENERAL / FRONT END / CLARIFICATION

Item 1-1: All parapet sheet metal cap flashing (CONT. PREFINISHED STEEL COPING TYP. AT PARAPET CAP) shall be pre-finished with color to match the ACM panel color.

Item 1-2: Section 075300 – SINGLE PLY MEMBRANE ROOFING

- Refer to Section 2.4 THERMAL BARRIER, Paragraphs A&B. Glass-mat, water resistant gypsum board & Perlite board are each listed and acceptable systemic thermal barrier options. Each product is listed as to provide a solution suitable to different single ply roof membrane “systems” and can be used at the contractor’s option so long as they are compatible with the other components of a particular manufacturer’s system.

LANDSCAPE

Specifications:

Item 1-3: Section 107500 - Flagpoles

- Refer to Section 2.1 MANUFACTURERS, Paragraph A. Subject to terms and conditions of the specifications, the following is an approved flagpole manufacturer:

Pole-Tech co., Inc.

Drawings

Item 1-4: Refer to Sheet L4.01 – Site Planting Plan

Refer to Plant List. Revise the “HKR” symbol “Botanical name”, “Common Name”, “Size & Method of Handling”, and “Design Spread & Height” to the following:

Botanical Name: Hosta ‘Krossa Regal’

Common Name: Krossa Regal Hosta

Size & Method of Handling: No. 1 Container, 30” Spacing

Design Spread & Height: 30” W x 28” H

663-003-10

Item 1-5: Refer to Sheet L4.01 – Site Planting Plan

Refer to Plant List. Revise the Carex Pennsylvanica “Size & Method of Handling” to the following:

Size & Method of Handling: No. 1 Container, 12” Spacing

Item 1-6: Refer to Sheet L4.01 – Site Planting Plan

The quantity of “HKR” plants has been revised. See SDL-001 for additional details.

ARCHITECTURAL

Specifications:

Item 1-7: Section 072119 – SPRAY APPLIED RIGID POLYURETHANE FOAM INSULATION SYSTEM

- Refer to Section 2.1 MANUFACTURERS, Paragraph A. Subject to terms and conditions of the specifications, the following is an approved SPF product:

BASF SPRAYTITE 178 Series Building Envelope Insulation – BASF Corporation, 1703 Crosspoint Avenue, Houston, TX 77054 Tel: (800) 706-0712 Fax: (763) 559-0945 web: www.spf.basf.com

Item 1-8: Section 072119 – SPRAY APPLIED RIGID POLYURETHANE FOAM INSULATION SYSTEM

- Refer to Section 2.2 SPRAY FOAM INSULATION, Paragraphs B-D. Subject to terms and conditions of the specifications, the following is an approved Thermal Barrier product:

FLAME SEAL-TB (SPF Thermal Barrier) – Specialty Products, Inc. Tel: (800) 627-0773 Fax: (763) 559-0945 web: www.specialty-products.com email: info@specialty-products.com

Item 1-9: Section 072726 – FLUID-APPLIED MEMBRANE AIR BARRIERS

- Refer to Section 2.1 MANUFACTURERS, Paragraph A. Subject to terms and conditions of the specifications, the following is an approved manufacturer:

Polywall Airlock Flex VP System

Item 1-10: Section 074243 – ALUMINUM COMPOSITE PANELS

- Refer to Section 2.1 SPECIFIED MANUFACTURERS, Paragraph A. Subject to terms and conditions of the specifications, the following is an approved aluminum composite panel:

Metal Design Systems, Inc. Series 20 Rear Ventilated Rainscreen

663-003-10

Item 1-11: Section 074243 – ALUMINUM COMPOSITE PANELS

- Refer to Section 2.1 SPECIFIED MANUFACTURERS, Paragraph C Sub-section 4. Color. Subject to terms and conditions of the specifications, the following is an approved aluminum composite material supplier:

larsen PE by Alucoil North America, Manning, SC

Item 1-12: Section 075300 – SINGLE PLY MEMBRANE ROOFING

- Refer to Section 1.7 SPECIAL PROJECT WARRANTY, Paragraph A. Section 1 which reads: 1. Warranty period is 15 years after date of Substantial Completion. Should be revised to read:
1. Warranty period is 20 years after date of Substantial Completion.

Item 1-13: Section 075300 – SINGLE PLY MEMBRANE ROOFING

- Refer to Section 2.2 EPDM MEMBRANE, Paragraph A. Omit Section 1: Thickness: 45 mils (1.1 mm), nominal. In its entirety, the desired membrane thickness is 60 mils.

Item 1-14: Section 075300 – SINGLE PLY MEMBRANE ROOFING

- Refer to Section 2.2 EPDM MEMBRANE, Paragraph B. Subject to terms and conditions of the specifications, the following is an approved EPDM Membrane Manufacturer:

Mule-Hide Products Co., Inc. Beloit, WI 608-365-3111

Item 1-15: Section 075300 – SINGLE PLY MEMBRANE ROOFING

- Add Paragraph 2.7 COVER BOARD

2.7 COVER BOARD

- A. Cover Board: ASTM C 1177/C 1177M, glass-mat, water-resistant gypsum substrate, 1/4 inch (6 mm) subject to compliance with EPDM Membrane system manufacturer's requirements.

Item 1-16: Section 077200 – ROOF ACCESSORIES

- Refer to Section 2.3 PREFABRICATED ROOF HATCHES, Paragraph A, Subject to terms and conditions of the specifications, the following is an approved roof hatch manufacturer:

Babcock-Davis, Model BRHPA36x36S1T-IRR

663-003-10

Item 1-17: Section 077200 – ROOF ACCESSORIES

- Refer to Section 2.4 SAFETY POST, Paragraph A, Subject to terms and conditions of the specifications, the following is an approved safety post manufacturer:

Babcock-Davis

Item 1-18: Section 078446 – FIRESTOPPING

- Refer to Section 2.2 FIRESTOPPING, Paragraph A. Subject to terms and conditions of the specifications, the following is an approved manufacturer:

Specified Technologies

Item 1-19: Section 079200 – Joint Sealants

- Refer to Section 2.1 Materials, General, Paragraph C. Subject to terms and conditions of the specifications, the following is an approved urethane sealant manufacturer:

Sika - Sikaflex

Item 1-20: Section 081416 – FLUSH WOOD DOORS

- Refer to Section 2.1 MANUFACTURERS, Paragraph A. Subject to terms and conditions of the specifications, the following is an approved flush wood door manufacturer:

Oshkosh Door Co.

Item 1-21: Section 083213 – ALUMINUM SLIDING GLASS DOORS

- Refer to Section 2.1 MANUFACTURERS, Paragraph A. Subject to terms and conditions of the specifications, the following is an approved aluminum sliding door manufacturer:

MANKO Window Systems, Manko 175 Mall Slider

Item 1-22: Section 083213 – ALUMINUM SLIDING GLASS DOORS

- Refer to Section 2.1 MANUFACTURERS, Paragraph A. Subject to terms and conditions of the specifications, the following is an approved aluminum sliding door manufacturer:

CRL US ALUMINUM, Series 2000 Sliding Doors

663-003-10

Item 1-23: Section 084113 – ALUMINUM ENTRANCES AND STOREFRONTS

- Refer to Section 1.2 SUMMARY, Paragraph B. Replace line 1. as follows::

See Section 087100 "Finish Hardware" for door hardware. Note that all door hardware for aluminum doors shall be provided by door hardware supplier and installed by aluminum door subcontractor. Coordinate hardware installation with General Contractor.

Item 1-24: Section 084113 – ALUMINUM ENTRANCES AND STOREFRONTS

- Refer to Section 2.1 MANUFACTURERS, Paragraph A. Subject to terms and conditions of the specifications, the following is an approved aluminum storefront system:

EFCO Series 433 Storefront System

Item 1-25: Section 084113 – ALUMINUM ENTRANCES AND STOREFRONTS

- Refer to Section 2.1 MANUFACTURERS, Paragraph A. Subject to terms and conditions of the specifications, the following is an approved aluminum storefront system:

MANKO Window Systems, Manko 450 Series

Item 1-26: Section 084113 – ALUMINUM ENTRANCES AND STOREFRONTS

- Refer to Section 2.1 MANUFACTURERS, Paragraph A. Subject to terms and conditions of the specifications, the following is an approved aluminum storefront system:

MANKO Window Systems, Manko 2450 Series

Item 1-27: Section 084113 – ALUMINUM ENTRANCES AND STOREFRONTS

- Refer to Section 2.1 MANUFACTURERS, Paragraph B. Subject to terms and conditions of the specifications, the following is an approved flush aluminum door manufacturer:

MANKO Window Systems, Manko 160 Series

663-003-10

Item 1-28: Section 084113 – ALUMINUM ENTRANCES AND STOREFRONTS

- Refer to Section 2.3 COMPONENTS, Paragraph A. Replace Paragraph A as follows:
 - A. Doors: Provide manufacturer's standard insulated/thermally broken 2-inch- (50.8-mm-) thick glazed doors (exterior aluminum doors only, vestibule doors need not be insulated or thermally broken) with minimum 0.125-inch- (3.2-mm-) thick, extruded tubular rail and stile members. Mechanically fasten corners with reinforcing brackets that are deep penetration and fillet welded or that incorporate concealed tie-rods.
 1. Glazing Stops and Gaskets: Provide manufacturer's standard snap-on extruded-aluminum glazing stops and preformed gaskets.
 2. Stile Design: As indicated above.
 3. Provide thermally broken frames at all exterior storefront entrance doors. Interior vestibule doors need not be thermally broken.

Item 1-29: Section 088000 – GLASS AND GLAZING

- Refer to Section 2.7 PRODUCT SCHEDULE, Paragraph A. Revise lines a. & e. as follows::
 - a. Exterior Glass Ply: 1/4", Heat Strengthened or Fully Tempered as required by code or to withstand thermal stresses
 - e. Interior Glass Ply: 1/4" Clear (Heat Strengthened or Fully Tempered as required by code or to withstand thermal stresses)

Item 1-30: Section 088000 – GLASS AND GLAZING

- Refer to Section 2.7 PRODUCT SCHEDULE, Paragraph B. Revise lines a. & e. as follows::
 - a. Exterior Glass Ply: 1/4", Heat Strengthened or Fully Tempered as required by code or to withstand thermal stresses
 - e. Interior Glass Ply: Vanceva Transparent Color: 0022 Laminate Glass (Heat Strengthened or Fully Tempered as required by code or to withstand thermal stresses)

Item 1-31: Section 088000 – GLASS AND GLAZING

- Refer to Section 2.7 PRODUCT SCHEDULE, Paragraph D. Revise line 1. as follows::
 1. Description: Type I, Class I, Quality q3, Kind LT (two lites of fully tempered Type I glass as required by code).

663-003-10

Item 1-32: Section 088000 – GLASS AND GLAZING

- Refer to Section 2.7 PRODUCT SCHEDULE, Paragraph E. Revise Paragraph E. as follows::
 - E. Ceramic-coated Insulating Spandrel Glass (with Vanceva Transparent Color: 0022 Laminate Interior Glass Ply) identified as TYPE 5 on frame types.
 - 1. 1” SunGuard SuperNeutral 68 on Clear as manufactured by Guardian Industries with spandrel coating.
 - a. Exterior Glass Ply: 1/4“, Heat Strengthened or Fully Tempered as required by code or to withstand thermal stresses
 - b. Coating: Guardian SuperNeutral #68 on #2 Surface
 - c. Airspace: ½” airspace finish – mill finish
 - d. Silicone: black
 - e. Interior Glass Ply: Vanceva Transparent Color: 0022 Laminate Glass (Heat Strengthened or Fully Tempered as required by code or to withstand thermal stresses) with Spandrel Coating on #4 surface. (Warm Gray)
 - f. Coating Location: Fourth surface.

Item 1-33: Section 088000 – GLASS AND GLAZING

- Refer to Section 2.7 PRODUCT SCHEDULE, Paragraph F. Revise lines a. & e. as follows::
 - a. Exterior Glass Ply: 1/4“, Heat Strengthened or Fully Tempered as required by code or to withstand thermal stresses
 - e. Interior Glass Ply: 1/4“ SatinDeco Acid-Etched Glass Heat Strengthened or Fully Tempered as required by code or to withstand thermal stresses

Item 1-34: Section 088000 – GLASS AND GLAZING

- Refer to Section 2.7 PRODUCT SCHEDULE, Paragraph G. Revise lines a. & e. as follows::
 - a. Exterior Glass Ply: 1/4“, Heat Strengthened or Fully Tempered as required by code or to withstand thermal stresses
 - e. Interior Glass Ply: Vanceva Translucent Color: 0029 Laminate Glass (Heat Strengthened or Fully Tempered as required by code or to withstand thermal stresses)

Item 1-35: Section 102113 – TOILET COMPARTMENTS

- Refer to Section 2.2 SOLID-POLYMER UNITS, Paragraphs A. Subject to terms and conditions of the specifications, the following is an approved Toilet Compartment Manufacturer:

Accurate Partitions Corp.

663-003-10

Drawings:

Item 1-36: Refer to Sheet A1.04

Replace ROOF PLAN GENERAL NOTES as listed below:

4. ROOF INSULATION SHALL BE INSTALLED IN AT LEAST TWO LAYERS WITH OFFSET JOINTS AND SHALL PROVIDE AN AVERAGE R-VALUE OF NOT LESS THAN R-24. A 1/4" THICK GLASS MAT FACED WATER RESISTANT GYPSUM SUBSTRATE COVERBOARD SHOULD BE PROVIDED IN ADDITION TO THE REQUIRED POLYISOCYANURATE INSULATION AND INSTALLED AS PER THE ROOFING SYSTEM PROVIDERS REQUIREMENTS.
9. INSTALL ROOF DRAINS IN ACCORDANCE WITH SPECIFICATION 221000, SECTION 3 EXECUTION. INSTALL NEW ACCESSORIES AS REQUIRED PER ORIGINAL MANUFACTURER.

Item 1-37: Refer to Sheet A2.01, A4.05, A5.01, A5.02 & A5.03

Relating to notes referring to exposed welds, all instances / notations of , "NOMMA FINISH LEVEL #2 OR BETTER" should read "NOMMA FINISH LEVEL #1". All welds exposed to view in project should be NOMMA finish level #1.

Item 1-38: Refer to Sheet A6.09

Refer to frames **AL-113 & AL-123** (all interior vestibule frames) All notes indicating glass type 1 (1" insulated) should be revised to type 3 (1/4" non-insulated), all notes indicating glass type 2 (1" insulated laminate) should be revised to type 4 (1/4" laminate).

Item 1-39: Refer to Sheet A6.09

Refer to door types, add the following note for door ALD-1:

Note: ALD-1: PROVIDE GLAZING PANEL 3 (1/4" NON-INSULATED) AT INTERIOR VESTIBULE DOORS TYP.

STRUCTURAL

Specifications:

Item 1-40: Section 042000 – UNIT MASONRY

- Refer to Paragraph 2.10 CAVITY INSULATION
Omit Paragraph 2.10 CAVITY INSULATION in its entirety.
Refer to Section 072100 BUILDING INSULATION for cavity wall insulation specification.

663-003-10

MECHANICAL

Specifications:

Item 1-41: Section 230901 – Instruments and Control Elements

Delta-P is a pre-approved pressure independent control valve manufacturer.

Item 1-42: Section 230902 – Variable Frequency Drives

Honeywell and Yaskawa are pre-approved VFD manufacturers.

Item 1-43: Section 232114 – Ground Loop Heat Pump Piping

Saathoff Inc. is a pre-approved geothermal contractor.

Drawings:

Item 1-44: Sheet M3.01 – Enlarged Mechanical Plans

The heat pump supply piping has been revised along with the location of the air separator (AS-1); see SDM-001 for additional details.

Item 1-45: Sheet M4.03 – Heat Pump Piping Schematic

The air separator (AS-1) and safety relief valve (SRV-1) have been relocated; see SDM-002 for additional details.

Item 1-46: Sheet M6.01 – Heat Pump Schedule

Carrier is a pre-approved manufacturer for the heat pumps.

Item 1-47: Sheet M6.01 – Split System Schedule

Carrier is a pre-approved manufacturer for the split systems.

Item 1-48: Sheet M6.01 – Packaged Energy Recovery Make-Up Air Root Top Unit Schedule

Reference Unit Type Line: the unit to be a, *WATER COOLED HEAT PUMP HEAT RECOVERY ROOFTOP UNIT.*

Reference Fan Section Type: the unit supply and exhaust fans to be *VFD / DIRECT DRIVE BACKWARD INCLINE PLENUM FANS.*

The heat pump coil shall continuously flow 24 gallons at a design pressure drop through the coil equal to 9.08 FT H₂O.

663-003-10

ELECTRICAL

Item 1-49: Sheet E1.01 – First Floor Lighting Plan

Refer to the Occupancy Sensor Schedule. Revise Type C3 Model number to read as follows: "LUXSTATLS" and the note to include: "CONNECT TO THE RELAY PANEL VIA 3 - #18 INSULATED CALSS 2 LOW VOLTAGE COPPER WIRES."

Refer to the Occupancy Sensor Schedule. Cooper Greengate has been approved as an equal manufacturer. The manufacturer's products have been reviewed in accordance with Project Specification, and are included in the Contract Documents for bidding purposes. All devices are required to meet the specification requirements regardless of prior approval. Prior approval does not waive any requirements indicated on the drawings or the specifications.

Item 1-50: Sheet E4.01 – Electrical Schedules

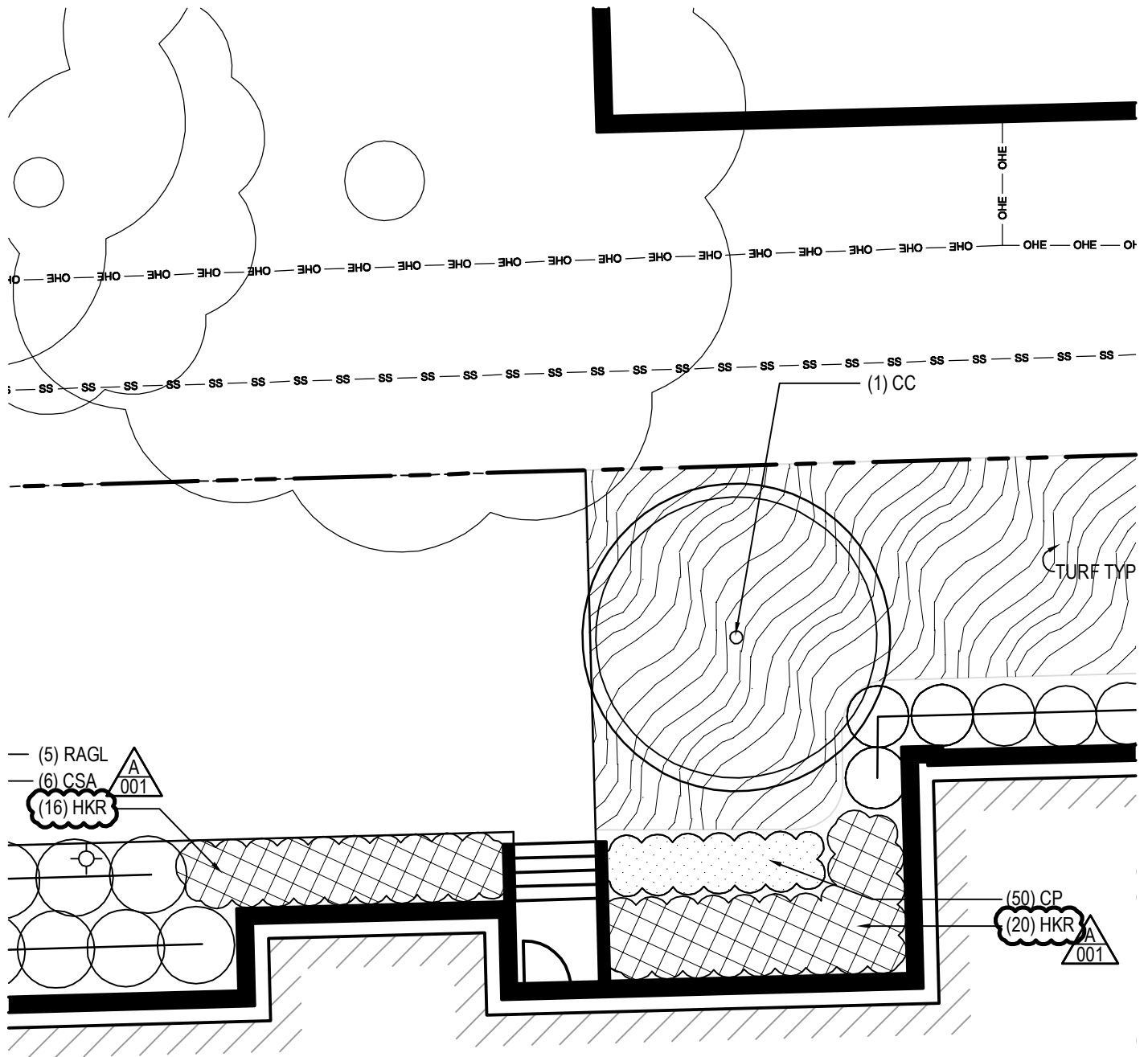
Refer to the Relay Panel 'RP1' Schedule. Cooper Greengate has been approved as an equal manufacturer. The manufacturer's product has been reviewed in accordance with Project Specification, and are included in the Contract Documents for bidding purposes. All devices are required to meet the specification requirements regardless of prior approval. Prior approval does not waive any requirements indicated on the drawings or the specifications.

TELECOMMUNICATIONS

Item 1-51: Section 270000 – TELECOMMUNICATIONS CABLE PLANT

- Refer to Section 1.5 MANUFACTURERS, Paragraph A. The following is an approved manufacturer: Commscope/Uniprise.

END OF ADDENDUM NO. 1



SITE PLANTING PLAN

SCALE: 1"=10'-0"

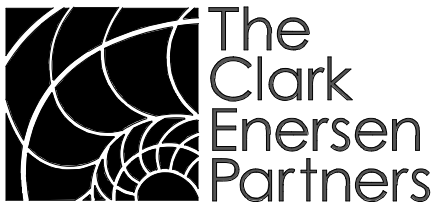
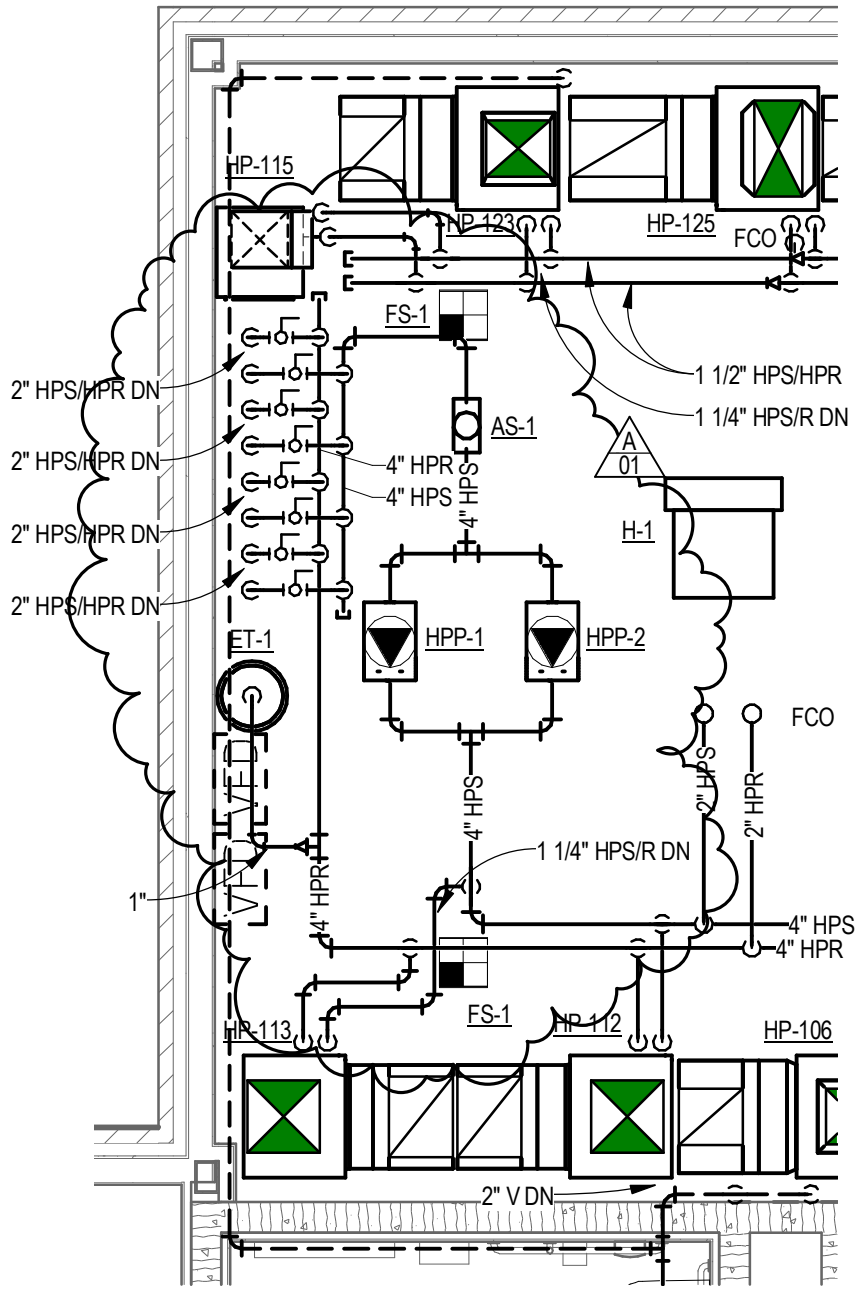


The
Clark
Enersen
Partners

Architecture + Landscape Architecture + Engineering + Interiors
1010 Lincoln Mall, Suite 200 Lincoln, NE 68508-2883
402 477.9291 Fax 402 477.6542
Kansas City, MO Fairway, KS www.clarkenersen.com

Ashland Community Resource Center
Ashland, NE
TCEP Project No.: 663-003-10

Addendum #01
Supplemental Drawing: SDL-001
Revision of Sheet: L4.01
Date: February 1, 2013



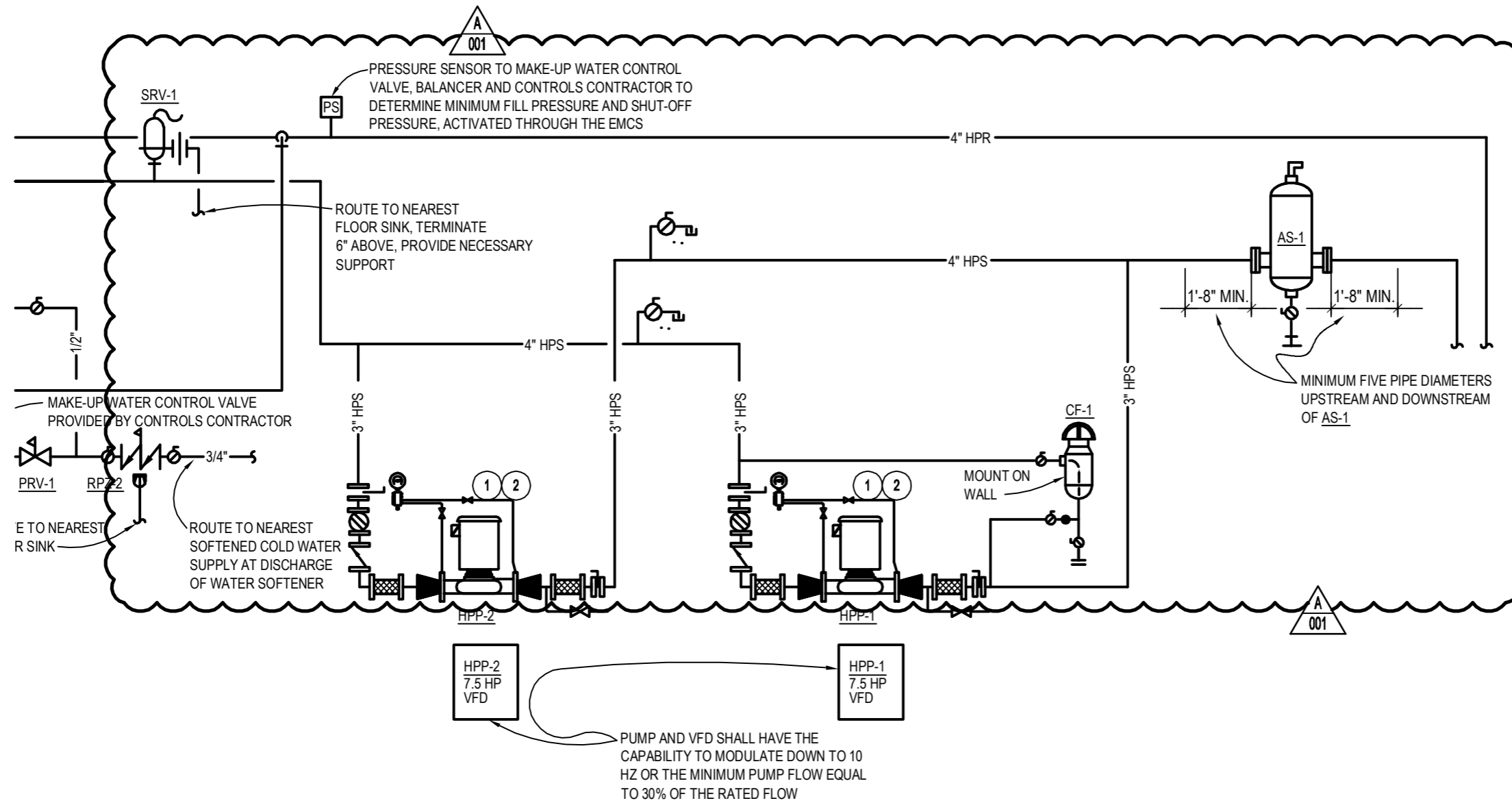
**The
 Clark
 Enersen
 Partners**

Architecture + Landscape Architecture + Engineering + Interiors
 1010 Lincoln Mall, Suite 200 Lincoln, NE 68508-2883 402 477.9291 Fax 402 477.6542
 1251 NW Briarcliff Parkway, Suite 400 Kansas City, MO 64116-1776 816 474.8237 Fax 816 474.8233
 2812 W. 53rd Street Fairway, KS 66205-1706 913 433.2110

www.clarkenersen.com

Ashland Community Resource Center
 Project City and State
 TCEP No.: 663-003-10

Heat Pump Supply Revision
 Supplemental Drawing: SDM-001
 Revision of Sheet: M3.01
 Date: 01/31/13



REVISED HEAP PUMP PIPING SCHEMATIC

NO SCALE

Ashland Community
Resource Center
Ashland, Nebraska
TCEP No.: 663-003-10

Addendum #01
Supplemental Drawing: SDM-002
Revision of Sheet: M4.03
Date: February 1, 2012